

# DROITWICH Standard

**TREE & LANDSCAPE**  
Specialists

Contact us today  
FREEPHONE: 0800 747 1704  
LANDLINE: 01905 886 566  
treeandlandscapespecialists@gmail.com  
www.treeandlandscapespecialists.co.uk

Friday, November 14th 2025 Week 46

f droitwichstandard

www.droitwichstandard.co.uk

@DroitStand

Your FREE edition - just pick one up and keep up with the news



**MOT**  
TEST CENTRE

THE HOME OF  
**£30 MOT'S**  
IN DROITWICH

**Berry Hill MOT Centre Ltd**

Unit 8 Northbank Berry Hill Ind Est  
Droitwich WR9 9AU Tel: 01905 771831

Professional  
**DPF**  
Reconditioning



Diesel Particulate  
Filter

## Jailed over sex crimes

**A DROITWICH Paedophile who raped and sexually abused a boy has been jailed for 25 years.**

Jason Lane, 44, of Old Coach Road, had previously been found guilty of 16 offences against his victim in June at Redditch Crown Court.

Lane was found guilty at a hearing at Worcester Crown Court where the judge described him as a 'very dangerous individual'.

He was convicted of three counts of rape of a boy under 13, two counts of rape of boy aged 13 to 15, four counts of assaulting a boy under 13 by touching and three counts of causing/inciting a boy under 13 to engage in sexual activity.

He was also convicted of causing/ inciting a boy under 13 to engage in sexual activity by penetration and two counts of attempting to cause/incite a boy aged 13 to 15 to engage in sexual activity without penetration.

And he was found guilty of causing a child under 13 to watch/look at an image of sexual activity.

His total sentence was 25 years - 21 years with four on licence, and he was given an indefinite Sexual Harm Prevention Order (SHPO).



DC Allie Thompson, from West Mercia Police's Protecting Vulnerable People team, said: "We are pleased to get this lengthy sentence for Lane whose predatory sexual behaviour had caused much harm to his victim and their family."

"I would like to commend the victim and their family for their bravery in coming forward and assisting with the process which has secured a conviction and ultimately taken a very dangerous individual off the streets.

"We hope the sentence will some way assist the victim in moving on with their lives with the correct support and assistance moving forward."

He also thanked the officers who, he said, worked tirelessly throughout the investigation to obtain the substantial sentence, adding their hard work over several years had helped secure the conviction.

And he said he hoped the sentencing showed the force would always pursue sexual predators and bring them before the courts to face justice and encourage other sexual offence victims to come forward.

"We will always listen to take your concerns seriously and protect you from the dangerous offenders like Lane."



The I-Sing Choir, Town Crier Edgar Harwood, Father Christmas and Mayor of Droitwich, Coun Christine Bowden are all looking forward to the town's big switch-on. Picture by Marcus Mingins 4625009MMR

## Festive fun at town switch-on

DROITWICH'S annual Christmas lights switch-on will take place in the town centre next Saturday, November 22.

The big countdown to the illumination at 6pm will be undertaken by the Mayor, Coun Chris Bowden, and Father Christmas.

Prior to that, there will be plenty of festive fun and live entertainment.

From 12pm to 5pm, Father Christmas will be in his grotto in the Heritage Centre, St Richard's House -

In Victoria Square there will be market stalls from 10am to 5pm and a funfair from 12pm to 6pm.

Entertainment in St Andrews Shopping

Centre will come from The Salvation Army Band (2.30pm to 3pm), The Star Project (3.15pm to 3.45pm), The Norbury Theatre's Jack and the Beanstalk panto cast (3.45pm to 4.15pm), Westacre Middle School Choir (4.15pm to 4.45pm), SB Danceworks (4.45pm to 5pm), ENTW9 (5pm to 5.15pm) and the I-Sing Choir (5.15pm to 6pm).

The Community Choir will be singing in St Andrew's Church from 4.30pm to 5.30pm.

Car parking will be free from midday in all of Wychavon District Council's town centre car parks.

Avery | Droitwich Mews  
CARE HOME

## Charity Quiz Night

Friday 21 November | From 6pm

Join us for a Charity Quiz Night in aid of The Worcester Warriors Foundation!  
Enjoy fun, laughter, and friendly competition with friends and family, plus refreshments and nibbles, all for a great cause.

**01905 934182** [averyhealthcare.co.uk](http://averyhealthcare.co.uk)  
Mulberry Tree Hill, Droitwich Spa, Worcestershire, WR9 7SS

SUPERVALUE FURNITURE & BED CENTRE

YOUR LOCAL DROITWICH INDEPENDENT TRADER

## STOCK CLEARANCE SALE



Cloud Zero  
Celebrity  
Sofa

**20% OFF**

MASSIVE 20% OFF ALL SILENTNIGHT BEDS, MATTRESSES & HEADBOARDS...LIMITED PERIOD



ADJUST-A-BED

SEE OUR MAIN ADVERT ON PAGES 10 & 11

# Housing's damp and mould to be tackled by team

**REDDITCH Borough Council has introduced a new dedicated Damp and Mould team to meet the requirements of the new nationwide Awaab's Law.**

Awaab Ishack, a two-year-old boy, was exposed to mould at home for prolonged periods of time, which tragically caused his death in December 2020.

Parliament then passed a law after this which included a requirement for landlords to investigate mould-related potential hazards within 14 days and, where health risks were identified. They must then begin repairs within a week.

This came into force at the end of last month - the borough council got ahead of this new law's introduc-

tion in January by designating a specialist Damp and Mould Team.

This team of ten consists of multi-trade builders, decorators, a senior supervisor and two administrators.

They have joined the council's already existing maintenance workforce to tackle damp and mould issues quickly and efficiently when they arise in the council's 5,500 properties.

This service costs nearly \$500,000 a year and means the new statutory response times can be met and that any Redditch tenants affected by mould will have their issues resolved.

Leader of Redditch Borough Council, Coun Sharon Harvey, said: "As a landlord, we have a duty to ensure our tenants live in

safe, clean homes and I am pleased to say we are well ahead of the national law coming into effect.

"This team is already taking major strides toward banishing damp and mould from our homes."

Coun Bill Hartnett, the council's portfolio holder for housing, said: "We've shown our tenants we take this issue seriously,

"Our local, in-house team is improving our service and cutting waiting times cost-effectively."

As winter approaches, the council is urging tenants to keep their homes properly ventilated and report any concerns as soon as possible.

Visit: [redditchbc.gov.uk/residents/my-home/repairs-and-maintenance/preventing-damp-and-black-mould/](http://redditchbc.gov.uk/residents/my-home/repairs-and-maintenance/preventing-damp-and-black-mould/) for more.



The flooded underpass in Rubery. Picture by Coun Esther Gray. s

**FLOOD HELL:** Councillors, campaigners and residents are calling on Worcestershire County Council to address the issue of flooding in a Rubery underpass.

The subway underneath the main dual carriageway through the village, linking Callowbrook Lane and New Road, has filled up with water.

Coun Peter McDonald is liaising with the Bromsgrove District Council depot and they are requesting Worcestershire Highways gets something done.

And with a Met Office yellow weather warning for heavy rain for Rubery and the rest of Worcestershire from this morning, there are fears the situation will only get worse.

Coun Esther Gray has been approached by residents forced to catch buses with wet feet after having to wade through the underpass' floodwater.

One parent, Esther Burgoyne, said her son came home soaked after getting off the bus from college.

"My dog was almost up to her belly and nearly had to swim through the subway."

The flooding has been caused by a soak-away, installed in the 1960s, which is not fit for purpose and becomes blocked.

We have contacted Worcestershire County Council and was awaiting comment yesterday at the time of going to press.

Visit this story on our website for the latest updates.

# Autumn

# SAVINGS

Buy now pay

## 2026

or 6 months after installation, spread the cost at

**19.9% APR REPRESENTATIVE\***

<b>LIVING SPACES</b> Orangeries, Conservatories & Glass Rooms	<b>WINDOWS</b> Exclusive UPVC & Aluminium Range	<b>FRONT &amp; BACK DOORS</b> Composite, UPVC, Solid Core & Aluminium	<b>FEATURE DOORS</b> French, Patio & Bi-Folding Doors

## MIDLANDS' LARGEST SHOWROOMS

### OPEN 7 DAYS A WEEK

**Kidderminster Showroom**  
Worcester Road  
Kidderminster DY10 1JR  
Tel: 01562 814868

**Worcester Showroom**  
36 Carden Street  
Worcester WR1 2AT  
Tel: 01905 886930

**5STARWINDOWS.CO.UK**

\*Credit is subject to application and affordability. Terms and conditions apply. £1000 minimum order value applies to all finance plans, with a maximum loan value of £50,000 and a minimum deposit of £99. E99 deposit option is only applicable to orders up to the value of £5,000 including VAT. Balance can be repaid within 6 months with a £29 exit charge. 5 Star Construction Services Limited, Worcester Road, Kidderminster DY10 1JR (FRN 730066) trading as 5 Star Windows & Conservatories is a credit broker and authorised and regulated by the Financial Conduct Authority. Credit provided by Novuna Personal Finance, a trading style of Mitsubishi HC Capital (UK) PLC, authorised and regulated by the Financial Conduct Authority (Register no. 704548).

PUBLIC NOTICES

For all your latest information on  
Planning Proposals, Traffic Notices,  
Goods Vehicle Operator Licences,  
Licences To Sell Alcohol and Probate Notices...

See page  
**38**

# Efforts to save listed building

**WORK carried out on the former Raven Hotel building will hopefully enable the Grade II listed parts to be preserved.**

Wychavon District Council has begun to install a buttress against the scaffold at the hotel.

And, while council leaders have admitted efforts to ensure 'urgent works' on the building are taking longer than expected, campaigners are hopeful recent developments are a step in the right direction.

The works, expected to be completed by the end of the week, will strengthen the structure, provide extra support, and allow regular monitoring.

Security remains in place, with repaired Heras fencing and a 12-hour daily presence provided by the owners, Live Urban Two Ltd.

Although the building is privately owned, the council is overseeing safety measures for reasons of public safety.

A spokesperson for the authority said it will follow normal debt recovery procedures to recover all costs incurred.

A fire broke out at the Raven Hotel in August and the building was made safe by the emergency services after the fire was extinguished.

Last month, Raven Heartbeat was set up to save the listed part of the former hotel building.

The group's members, who want the listed

parts of the building be used for the community, said the work was a step in the right direction and they hoped it was the beginning of what was to come for the Raven's preservation.

Wychavon District Council leader, Coun Richard Morris, said: "Work is taking place to install a buttress against the scaffold at the Raven Hotel to strengthen the structure, provide extra support, and allow regular monitoring.

"While the building remains the responsibility of the private owner, we are carrying out this work to ensure the safety of the public.

"We will be following our normal debt recovery procedures to recover all costs incurred from the owner.

"Work is ongoing, with partners, to bring pressure on the owner to deliver urgent works on this historic building, which is a vital part of Droitwich Spa and Wychavon's history.

"This is taking longer than we had hoped, but fellow councillors and I are working with officers to explore every angle to try and achieve the necessary outcome."

Coun Dan Birch added: "Personally, I hope we are nearing a turning point.

"For now, Wychavon will continue to use all its powers to ensure the building remains safe, and by taking these steps, we hope to avoid further damage occurring.

"I can promise you, I want to see this building saved and will continue to do all I can as a councillor to see that happen."



Work on the former Raven Hotel building which was devastated by fire in August. Picture by Paul Jones. 5

A HOST of Christmas events are taking place across Bromsgrove district.

As well as the lights switch-on in Bromsgrove next Saturday, November 22, and the Friends of St John Christmas Markets on November 21 and 22 in the town centre, the district centres will also be awash with Christmas cheer.

Catshill's lights switch-on will also be on November 22 - from 3pm at the village hall.

Wythall will be illuminated during an event from 4.45pm on November 28 at The War Memorial, Gorseley Lotts.

On November 29, there will be three switch-ons - Rubery's from 3pm on the Co-op car park, Barnt Green's will be from 3.30pm in Millennium Park and Hagley's will take place from 4pm on Worcester Road.

Alvechurch's Christmas lights switch-on takes place from 4pm on November 29 in The Square outside Co-op and the lights in

will be illuminated with a street party from 3pm on December 14 in the centre of the village.

And the countdown to illuminate Aston Fields will take place with a street party in the centre of the village from 3pm on December 14.

Bromsgrove District Council leader, Coun Karen May, said: "Once again there is an amazing line-up of festive fun across the district and what's more, they are all free."

Special postcards have been created to detail all the events - both in the town centre and the villages across the district.

These are being distributed through local libraries and at the Council House, Parkside.

People can also find out more about the various events at the Parkside customer service centre.

Alternatively, visit: [bromsgrove.gov.uk](http://bromsgrove.gov.uk) - the council's website - for more information.

**JC  
GLAZING  
& REPAIRS  
LTD**

***A FRIENDLY, HONEST &  
RELIABLE SERVICE...***

**Have your double glazed units misted up?**

**Don't despair help is here!**

**WE CAN REPLACE THEM**

Call us for a free quote



- Locks
- Hinges
- Mirrors
- Misted Glass
- Safety Glass
- Decorative Glass
- Cat Flaps in Glass
- Conservatory Repairs
- Fascias, Soffits & Guttering
- UPVC Windows, Doors & Conservatories
- Log Burner Glass Supplied

ANYTHING TO DO WITH GLASS & WINDOWS

A-RATED WINDOWS SUPPLIED & FITTED

ALL WORK GUARANTEED





**UPGRADE YOUR OLD U.P.V.C. WINDOWS**

We can replace your existing glass with Energy Saving Glass & refurbish your frames at half the cost of new.

Patio Doors French Doors  
Front Doors Back Doors  
Composite Doors

Card payments accepted  

**Call Jon on 01527 857 786  
or 07931 198 152**



**Longbridge  
Cladding & Roofing Ltd**  
A local team you can trust

## SPECIALISTS IN ALL ASPECTS OF ROOFING



New Roofs - Roof Repairs - Flat Roofing  
Fascia, Soffits & Guttering - Cladding  
Moss Removal Chimney / Ridge Tile Repointing  
Local References Available - Free Quotations

**For a FREE quote, contact the local company you can trust**

**Birmingham - 0121 667 8938**  
**Redditch - 01527 906 586**

Park House, Bristol Rd South, Rednal,  
Birmingham B45 9AH

[www.longbridgecladdingandroofingltd.co.uk](http://www.longbridgecladdingandroofingltd.co.uk)  
[sales@longbridgecladdingandroofingltd.co.uk](mailto:sales@longbridgecladdingandroofingltd.co.uk)

# Remembrance



LEFT: Mayor of Redditch, Deputy Lord Lieutenant, and the scouts at the service. Picture by Ashleigh Osborne. MIDDLE: The parade ready to march to the war memorial. s RIGHT: The service was led by Revd Canon Paul Lawlor . Picture by Roy Edwards.

## Turning out to pay silent tribute

HUNDREDS of people turned out for the annual Redditch Remembrance Sunday parade and service in another record-breaking year for attendances.  
By 10.30am Alcester Street was jammed with people as the parade made its way up to the war memorial by St Stephen's Church.  
Participants were met at the memorial outside St Stephen's Church by Rev Canon Paul Lawlor who conducted the service.  
Rev Lawlor spoke about the importance of the community coming together and paid tribute to those who lost their lives in the First and Second World Wars.  
The final Act of Remembrance

was the laying of wreaths at the foot of the monument and this year there were more than ever.  
The first person to lay a wreath was the King's representative, Deputy Lord Lieutenant Charles Moyle, who was followed by representatives of Redditch Royal British Legion, including chairman Gerry Marsden, the emergency services, former servicemen and women, Mayor of Redditch, Coun Joanna Kane, and various leaders of local organisations.  
Also present at the service were



members of the Royal Navy, Army, Royal Air Force, Cadets, Scouts, Girl Guides, Cubs and Beavers, and

veterans.  
Speaking on behalf of Redditch RBL, Mr Marsden said: "It is important to honour our fallen and to be part of something that remembers those who have given so much."  
"This includes not those who have given their lives but those who have come back suffering from terrible injuries and the mental scars of war that you cannot see."  
The parade on Sunday was followed by a further act of remembrance on Armistice Day on

Monday (November 11).  
As ever it was subtly different from the Remembrance Sunday parade with a quieter, more reflective air.  
The service was led once again by Rev Paul Lawlor as the gathering marked 107 years since the guns fell silent on the Western Front at 11am on November 11, 1918.  
Joining him were serving members of the armed forces, veterans and members of the Royal British Legion and leading dignitaries, including Redditch Borough Mayor Coun Joanna Kane and Council Leader Sharon Harvey.  
Picture by Roy Edwards.

# OFTEN IMITATED BUT NEVER EQUALLED

## While all costs are going up - OURS ARE STAYING DOWN

Due to our customer friendly services of No Door Salesmen, No Showroom and little overheads



**NEW FLUSH WINDOWS**

**BEAUTIFUL COMPOSITE DOORS**  
Fully fitted  
**Competitive Prices**



## UPTO 30% OFF ALL WINDOWS



**ALL PRODUCTS HAVE A 10 YEAR INSURANCE BACKED WARRANTY**

# BILL MOORE'S WINDOWS AND DOORS

A NAME YOU CAN TRUST

1 Brookside Close, Stratford-upon-Avon, Warwickshire CV37 9PL

01789 415171 • 07729 689239 • [www.billmooreswindowsanddoors.co.uk](http://www.billmooreswindowsanddoors.co.uk)

# Youngsters find a green way to pay tribute to all our heroes

A COLOURFUL display of poppies, using recycled plastic bottles, went on display in Romsley ahead of Remembrance Sunday and Armistice Day.  
The showing was created by Beavers, Cubs and Scouts - aged between six and 14 - from Romsley St Kenelm's Scout Group.  
The youngsters started collecting plastic pop bottles earlier in the year and amassed over 230.  
Then, in recent weeks all the youngsters were involved cutting, painting and gluing

the bottles to make the bright red flowers.  
The poppies were placed on display, with the help of leaders and parents, on both sides of the main road that passes through the village, creating an impressive show.  
Lucy Baker, an adult volunteer with the Scout group who helped with the project, said: "The Beavers, Cubs and Scouts worked hard and thoroughly enjoyed making all the poppies."  
"The response from community has been wonderful and we're very proud of what the



ABOVE: Members of Romsley St Kenelm's Scout Group, Jack Withers, George Withers, Harry Smith and Eli Baker, with the poignant poppy display created from recycled plastic bottles. LEFT: This post box topper made by Suzanne Little, the grandmother of two of the Beavers. s



A SMALL Remembrance Sunday ceremony took place in Wychbold. The service took place at the Lychgate of Mary De Wych Church. This photograph was sent in by Rob Davies.

He said: "The people of Wychbold always turn out to pay their respects."  
**Wychbold paid their respects on Remembrance Sunday at Mary De Wych Church.**

young people have achieved."  
The Display also includes a fabulous post box topper made by Suzanne Little, the grandmother of two of the Beavers.  
Romsley St Kenelm's Scout Group has more than 90 children and young people, girls and boys, in its ranks.

They enjoy a full programme of weekly meetings, camps and activities.  
The group is supported by over 20 volunteer adults and plans to open a Squirrel section - for four and five year-olds - in the next few weeks.

\*Terms apply



JOIN FOR £20.26 & PAY NOTHING UNTIL 2026\*

AVAILABLE FOR A LIMITED TIME ONLY

Where You Fit

SWIMMING POOL

CARDIO

RESISTANCE KIT

FEEL AT HOME

LIFESTYLE SUPPORT

GROUP EXERCISE

SPA POOL

SAUNA & STEAM ROOM

★  
ONLINE JOINING  
PROMO CODE:  
**YF2026**




[youfitclubs.co.uk](http://youfitclubs.co.uk)

Look and feel amazing this festive season with You Fit.  
Feel at home in our clubs, enjoying our great range of facilities including full gym suite, fitness classes, plus our pool for an invigorating swim or relaxing dip after your workout.

Why wait until the New Year to start your health kick, when you can join now and get the rest of the year for just £20.26. The earlier you join, the better the value!

01527 571 957  
[bromsgrove@youfitclubs.co.uk](mailto:bromsgrove@youfitclubs.co.uk)  
Holiday Inn Bromsgrove  
Kidderminster Rd, B61 9AB

# Remembrance 2025



ABOVE: The parade began at the top of the High Street. Picture by Harry Monahan. s

TOP, MIDDLE: Some of the veterans who attended. s

TOP, RIGHT: Ch Insp Dave King lays a wreath at the memorial. Picture by Harry Monahan. s

RIGHT: Commander James Mitchell (Royal Navy) with daughter Frances, nine. Picture by Tristan Harris. © Bullivant Media Group Ltd.



## Huge crowd attends parade

**ALMOST 3,000 people turned out for Bromsgrove's annual Remembrance Sunday Parade and Service.**

The parade journeyed from the top of the High Street, past the Oddfellows Memorial and to the monument in Crown Close.

After an introduction by Rev Ray Khan, there was The Exhortation, two-minute silence, The Kohima Epitaph and almost 40 wreaths were laid from various organisations. Among them were armed forces veterans, politicians representing different parties and community groups.

For the first time this year, Frances Mitchell, nine, who attends St John's Middle School, laid a wreath on behalf of children whose parents are serving in the Armed Forces.

Her dad, Royal Navy Commander

James Mitchell, was proudly by her side.

Afterwards he said: "It's good to come together and to remember the children of those serving who are also affected."

"Sometimes they are also among the ones left behind when servicemen and women make the ultimate sacrifice."

Frances added: "I was happy to do this - I know other children whose parents are in the armed services so I wanted to represent all of us."

In his sermon, Rev Khan spoke about the important of giving service, rather than taking.

"The question we face in our own lives is: are we taking back or giving?" he said. "Today, we remember those who gave. They gave their everything. We will remember them."

The service also featured the hymns 'I Vow to Thee, My Country' and 'Make me a Channel of Your Peace'.

And it concluded with the National Anthem before the parade was dismissed.

The Deputy Lord Lieutenant of Worcestershire, Fiona Charny, also attended. She said: "It really was a lovely parade and service and the turn-out was very impressive. I have been to the Bromsgrove Remembrance Sunday Parade before and it is always wonderful."

Bromsgrove MP Bradley Thomas said: "It's heartening to see so many people come out - not just to show how much they value and respect the armed forces but also those who made the ultimate sacrifice."

On Tuesday (November 11), Bromsgrove came together at the Odd Fellows Memorial on the High Street to commemorate Armistice Day.

Visit [bromsgrovestandard.co.uk](http://bromsgrovestandard.co.uk) for more pictures of Remembrance Sunday and Armistice Day.

### So much more than self storage

Wellesbourne, Shipston-on-Stour, Mickleton & Long Marston



We can help you move house, build an extension or start a new hobby

Call Lindsey 0800 772 0200  
[hello@beyondstorage.co.uk](mailto:hello@beyondstorage.co.uk)  
 Wimpstone Fields, Wimpstone  
 Stratford-upon-Avon CV37 8NN

**Beyond Storage**





### Why Replace When You Can Repair




- Bathroom repairs undertaken
- Kitchen repairs undertaken including worktops, units & doors
- Window and Door repairs
- Brickwork repairs.

**Mobile: 07359 673282 Office: 01905 886377**

Email: [worcester@snagdoctor.co.uk](mailto:worcester@snagdoctor.co.uk)  
 Web: [snagdoctor.com/worcester](http://snagdoctor.com/worcester)  
 Contact us on WhatsApp

# Remembrance



LEFT: A glorious sight- the remembrance parade. RIGHT: Crowds gather to watch the service.

## Gathering to remember the fallen

DROITWICH gathered to remember those who had served in a particularly poignant Remembrance Sunday service.

The annual service at the town's war memorial held extra significance with the 80th anniversary of the end of the Second World War.

It came just days after the names of five 'forgotten' Second World War heroes - RAF Flying Officer Bernard Belcher, RAF Captain HJ Jeffcoat, Sgt Robert Hall, Jack Haslam and Pte Douglas Patrick McDornell - were added to the memorial.

Crowds gathered to see the magnificent Remembrance parade march from Droitwich Police Station to the war memorial.

The service began shortly before 11am with Rev Laura Handy's opening words highlighting the importance of committing to work for reconciliation between nations and for all people to live in freedom, justice and peace.

Those gathered then sang: 'Praise My Soul, The King Of Heaven'.

After The Exhortation and The Last Post, there followed by an impeccably-observed two-minute

silence and then the Reveille and Kohima Epitaph.

Dozens of wreaths were laid by representatives from organisations, including the Royal British Legion, Droitwich Town Council, West Mercia Police, Hereford and Worcester Fire and Rescue Service, Droitwich Community Choir, the Friends of Droitwich Spa Lido and MP Nigel Huddleston.

One of the most emotional moments of the day was when Burma Veteran Eric Davis stepped up to the war memorial to commemorate his fallen comrades.

After the service, Eric, who turned 100 earlier this year, said he was determined to come to the service and lay a wreath in Remembrance.

The service also included prayers, bible readings, hymns, including I Vow To Thee, My Country, and the National Anthem.

The parade was dismissed after final thoughts and a blessing from Rev Handy.

Afterwards, she told the Standard: "The world is sadly very divided but today shows a remarkable amount of unity."

"It is always amazing to see how many people choose to turn up to remember those who have fallen."

"This year was extra special with Eric who despite turning 100 was so committed to coming and remembering his comrades, it was really beautiful to see him do that."

"The five names being added to the war memorial this year is really poignant, as it reminds you there's so many heroes in war whose stories we don't know."

"Privilege is too light a word to express how I feel being able to lead services like this."

## Whenever is best for you is best for us.

Whether you walk through our doors or see us online, our GPs are there to give you the time.

Get unlimited same or next day GP appointments and access to our Urgent Care Centres with HCA UK's GP subscription.

And appointments are available within 24 hours.

Get the  **HCA** Healthcare UK *treatment*



[hcahealthcare.co.uk/gp-subscriptions](https://hcahealthcare.co.uk/gp-subscriptions)



# Arrests follow police crackdown on crime

**FOUR** people have been arrested and more than **£250,000** worth of funds have been frozen as part of an organised crime crackdown in Worcestershire.

Barbershops, vape shops, mini marts, themed candy stores, and other cash-intensive businesses across Worcestershire were targeted in a month-long crackdown on high street crime.

As part of Operation Machinize, 30 searches were conducted in premises in Bromsgrove, Rubery, Droitwich, Stourport, Worcester and Evesham.

In total, £254,482.08 worth of funds were seized, while a further £11,785 was seized in cash.

In addition, Trading Standards confiscated approximately £47,404.25 in illegal goods.

Many of these illegal goods were concealed out of sight, in hidden compartments behind tills, inside walls, in basements, or even tucked away in microwaves.

Police also seized a range of dangerous and illegal items, including four knives, one knuckleduster, two firearms, and a quantity of cannabis.

West Mercia Police and Crime Commissioner John Campion said: "These latest results reflect our unwavering commitment to tackling serious and organised



Vape shops were part of the police crackdown. s

crime and ensuring it has no place on our high streets.

"While the vast majority of shops in West Mercia are operating legitimately and form the lifeblood of our communities – it's crucial that those who are not, feel the full weight of the law.

"Through strong partnership working and proactive policing, we are sending a clear message: criminal activity will be uncovered, disrupted, and removed."

Det Sgt Rachel O'Brien, from West Mercia Police's Economic

Crime team, added: "Operation Machinize was launched to disrupt cash-intensive businesses being used as fronts for a wide spectrum of criminal activity across our three counties.

"Investigations uncovered links to drug trafficking and distribution, organised immigration crime, modern slavery and human trafficking, firearms offences, and the sale of illicit tobacco and vapes.

"We know cash-heavy enterprises are frequently exploited for money laundering. Organised crime

groups often target legitimate businesses, such as barbershops, using their high cash turnover to conceal illegal financial flows.

"Operation Machinize sends a clear and uncompromising message: criminal activity will not be tolerated in our communities.

"This operation was made possible thanks to vital intelligence from the public. We continue to urge anyone with information about businesses involved in money laundering or related offences to come forward."

## Walking plan takes a big step forward

A NEW Redditch Local Cycling and Walking Infrastructure Plan (LCWIP) has been published by Worcestershire County Council.

The plan sets out a long-term vision to make walking, wheeling, and cycling in Redditch safer and more accessible for everyone.

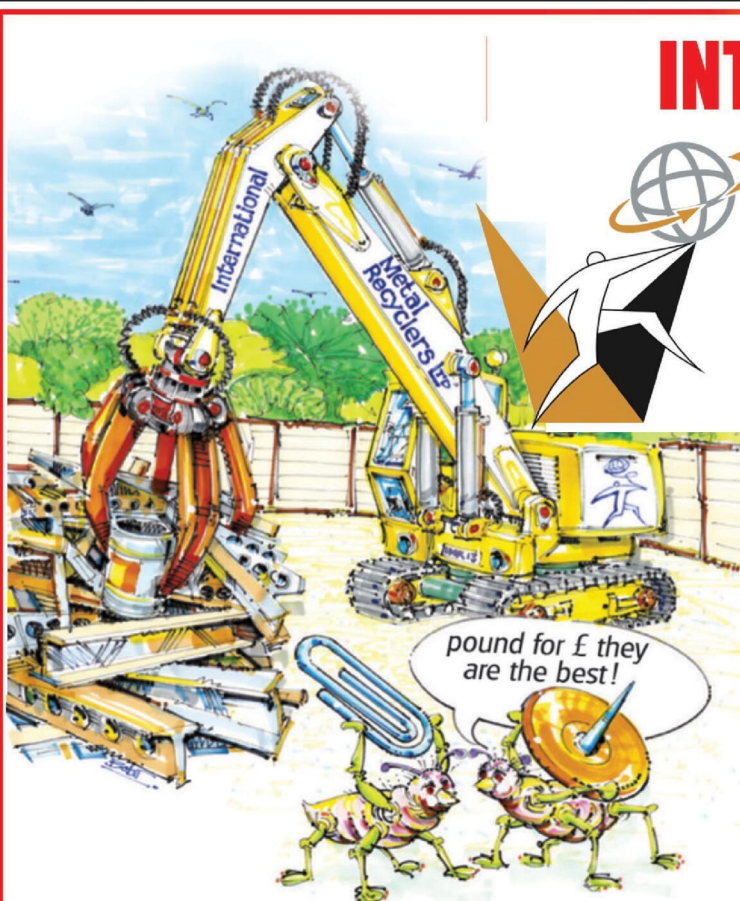
The LCWIP follows a public engagement exercise held in 2024, where residents, businesses, and community groups were invited to share their views on how to improve active travel routes and connections across the town.

Coun Karl Perks, Worcestershire County Council's cabinet member with responsibility for highways and transport, said: "The Redditch LCWIP sets out a clear framework for improving walking and cycling routes across the town, helping residents choose how they travel for everyday journeys.

"Redditch already has a strong network of paths and cycleways, and this plan will build on that foundation, focusing on safety, accessibility, and better connections between neighbourhoods, schools, and key destinations."

The Redditch LCWIP includes five priority routes and a walking and wheeling zone in Redditch town centre. While LCWIPs do not come with direct funding, having an adopted plan puts the county council and its partners in a strong position to secure investment as new funding for active travel becomes available.

Visit [worcestershire.gov.uk/redditchlcwip](http://worcestershire.gov.uk/redditchlcwip) for the full report.



## INTERNATIONAL METALS & CABLE RECYCLING LTD

**We purchase all Ferrous and Non Ferrous Metal Batteries and Cables**

**Collection Service Available**

**Long Marston Road, Long Marston, Stratford Upon Avon, Warwickshire, CV37 8AQ**

**01789 721 288**

**david@imrltd.co.uk**

**Open Mon/Fri - 8am - 5pm**



# ST AUGUSTINE'S SIXTH FORM OPEN EVENING

# THURSDAY 20TH NOVEMBER 2025 5PM-7PM



# SAVE THE DATE



# SUPERVALUE FURNITURE & BED CENTRE

## TOP QUALITY MOBILITY FURNITURE FOR YOU

### Who Are We?

**OVER 35 YEARS OF LOCAL SERVICE** - Caring for Droitwich homes with comfort, quality, and a personal touch

**COMMITTED TO "COMFORT FOR EVERY CUSTOMER"** - Supportive, stylish, and affordable mobility furniture from trusted British brands.

**FAMILY-RUN, FRIENDLY ADVICE** - Guiding you to the perfect Rise & Recline Chair or Adjustable Bed for your home.

**MORE THAN FURNITURE** - helping make life at home easier, more comfortable, and more enjoyable for you and your loved ones.



### Riser Recliner Chairs

Enjoy comfort, support, and style with our wide range of quality recliner chairs and matching sofas.

- Choose from a huge selection of fabrics, leathers, and colours
- Find sizes to suit your home and personal comfort
- Take advantage of excellent Pre- and After-Sales Service
- Enjoy discounted prices & VAT exemption available



### Adjustable Beds

Experience effortless comfort and independence with our range of adjustable beds - designed for quality sleep and everyday ease.

- Simple, one-touch control
- Available in Single, Double, and Dual models
- Fantastic fabric and headboard options
- Discounted prices & VAT exemption available



### Why Choose Us?

**FRIENDLY, PERSONAL SERVICE** - offering honest advice and personal attention you can trust.

**FAST, HASSLE-FREE DELIVERY** - Delivery often within 24 hours, with free setup and installation.

**QUALITY PRODUCTS FOR COMFORT & STYLE** - Furniture, beds, and mobility items chosen for quality and lasting comfort.

**PROUD BRITISH BRANDS** - Supplying trusted names like Celebrity, Sherborne, Highgrove, and Adjust-A-Bed.

**TRUSTED & RELIABLE** - Built on honesty, value, and a reputation you can rely on.

**WE COME TO YOU** - Home visits available by appointment - we bring our service to your door.

"Another Great Experience - Fantastic Service starting in the Showroom, right through to delivery and installation. Five Star Service! Fantastic Products!"  
(L.H. Sept 2025)



"Fabulous Products. Lovely and Helpful Staff and Good prices - what more could you ask for!"  
(CB August 2025)



"First Class Service again. Very reasonable prices for good quality furniture. Quick delivery. Very Helpful and Friendly Staff. Highly Recommend them!"  
(MQ July 2025)



**Free parking | Free local Delivery, Installation & Disposal Available | Family-run for over 35 years**  
Open 7 days! Monday to Saturday 9:00am – 5:30pm | Sundays 10:30am – 4:30pm



**01905 796507 | info@svfonline.co.uk**  
**21-29 HIGH STREET, DROITWICH SPA WR9 8EJ**

# SUPERVALUE FURNITURE & BED CENTRE STOCK CLEARANCE SALE

\*Selected Lines



CUSTOM SIZES AVAILABLE TO ORDER



BEDROOM RANGE AVAILABLE IN GREY MIST OR WHITE WITH SOLID OAK LIGHT TOPS



BESPOKE UK MADE SUITES, SOFAS & CHAIRS INSTORE

**LARGE RANGE OF SUITES, SOFAS & CHAIRS UP TO 50% OFF TO CLEAR**



LUXURY SOFA BEDS IN STORE



DUAL MOTOR / CLOUD ZERO RISER RECLINERS AVAILABLE IN 3 SIZES



LARGE RANGE OF MODELS IN STORE



HIGHGROVE 4'0" / 4'6" DIVAN SET PACKAGE DEALS FROM £399



NEW GPLAN MODELS INSTORE



**20% OFF**

Silentnight mattresses, beds and headboards

**MASSIVE 20% OFF ALL SILENTNIGHT BEDS, MATTRESSES & HEADBOARDS LIMITED PERIOD**



MORE LAZBOY MODELS IN STORE



MODELS IN STORE



UK MADE FULLY ASSEMBLED BEDROOM RANGES



OAK LIVING ROOM/DINING ROOM RANGE



SALE £3495 NOW £995 !! LIMITED STOCK UK MADE CORNER GROUP, MANAGERS SPECIAL



NEW RANGE NOW IN STORE



RISER RECLINERS

LARGE RANGE IN STORE



RANGES OF OAK BEDROOM FURNITURE IN STORE



OTTOMAN PACKAGE DEALS IN STORE ALL SIZES AVAILABLE

**EX SHOWROOM DISPLAY BED MODELS, SAVE UP TO 50% OFF TO CLEAR**



IN STOCK FOR IMMEDIATE DELIVERY



LARGE RANGE OF MODELS IN STORE



NEW MANGO LIVING ROOM RANGE IN STORE



Free parking | Free local Delivery, Installation & Disposal Available | Family-run for over 35 years

Open 7 days! Monday to Saturday 9:00am – 5:30pm | Sundays 10:30am – 4:30pm



01905 796507 | info@svfonline.co.uk

21-29 HIGH STREET, DROITWICH SPA WR9 8EJ

# Offering a chance to remember someone



Supporters at Primrose Hospice's 2024 Santa Fun Run - will you be lining up this year? s



RUNNERS are being urged to take part in a fantastically festive event and raise funds for the Primrose Hospice at the same time.

annual gathering of our local community heroes - Santa suits and jingle bells descends upon Arrow Valley Country Park for one day only in December.

The charity's annual Santa Fun Run takes place at Arrow Valley Country Park in Redditch on December 7.

"Our Santas remind us all of our shared humanity, running to raise funds that achieve one clear purpose - to support patients and families facing really difficult times.

Whether participants are seasoned runners or simply looking to soak up some Christmas cheer, the event is ideal for all ages and abilities.

"Every penny raised, goes towards our efforts as a hospice to make sure our services are here so that nobody within the Bromsgrove and Redditch areas faces this struggle alone.

People can choose between a 1km or a 5km route so it is perfect for families, friends, and even four-legged companions.

"Bring the cheer, the festive spirit and get those legs walking, jogging or dashing on Sunday, December 7 - and yes, you can be the Santa others need this Christmas."

Every participant will receive a free Santa suit so they can turn Arrow Valley into a sea of red and white.

The Primrose Hospice Santa Fun Run 2025 is being sponsored by John Truslove and supported by Redditch Round Table and Redditch Stars.

And at the finish line there will be eco-friendly medals and tasty mince pies for the finishers.

Visit [primrosehospice.org/events/santa-fun-run/](http://primrosehospice.org/events/santa-fun-run/) for more and to sign up for the run.

Jack Taft, Primrose Hospice fundraiser, said: "Santa Fun Run is an

THE PRIMROSE Hospice Lights of Love tree will be illuminated as part of the annual Christmas switch-on.

The annual fundraiser enables people to remember lost loved ones by dedicating a light on the tree outside Asda in Bromsgrove or on the tree in Redditch.

One person taking part is Megan who is remembering her dad Neil Turberfield, affectionately known as 'Turbo'.

She said: "He wasn't just my dad, he was my best friend."

"Dad worked extremely hard to provide for us and would spoil us rotten at Christmas."

"We had many family festive traditions, which no longer felt right without dad."

"During the run up to Christmas 2024, our first without dad, we were searching for a way to remember him."

"It was during this difficult time that the family discovered Primrose Hospice's Lights of Love campaign."

"Lights of Love has enabled us to start a new family tradition, so we still feel close to dad."



"As we stand at the tree in Redditch, we take a moment to remember all the mischief dad got up to at Christmas and it's a chance to stop and reflect on all our treasured memories."

The Primrose has been an invaluable part of the family's grief journey.

It has also helped Megan's son

Jaaxon to understand this extremely difficult time in his life.

And it has made their grief feel heard and helped normalise their emotions around losing the king of the family.

"Making a donation to Lights of Love to have dad's name displayed is a way for us as a family to give back and we were pleased to see our friends and family also support the cause by making their own tributes to dad."

The Bromsgrove Lights of Love will be illuminated at the switch-on outside Asda next Saturday, November 22.

The Redditch Lights of Love tree will be outside St Stephen's Church.

Call 01527 889796, visit: [primrosehospice.org/events/lightsoflove](http://primrosehospice.org/events/lightsoflove) or email: [fundraising@primrosehospice.org](mailto:fundraising@primrosehospice.org) for more on the Lights of Love and to take part.

To ensure names are listed in time for Christmas, people need to make their donations no later than December 19.

**Neil Tuberfield, who will be remembered on the Lights of Love tree, pictured here with his grandchildren. s**

**MEGA BLACK FRIDAY DEALS**

**BUY NOW PAY 2026**

or 6 months after installation, spread the cost at **19.9% APR REPRESENTATIVE\***



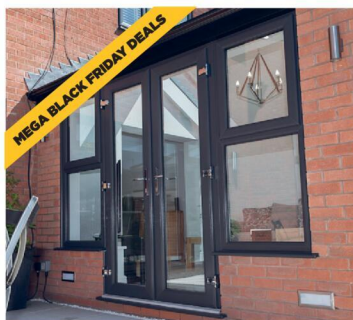
**LIVING SPACES**  
Orangeries, Conservatories & Glass Rooms



**WINDOWS**  
Exclusive UPVC & Aluminium Range



**FRONT & BACK DOORS**  
Composite, UPVC, Solid Core & Aluminium



**DOORS**  
French, Patio & Bi-Folding Doors

**MIDLANDS' LARGEST SHOWROOMS  
OPEN 7 DAYS A WEEK**

**Kidderminster Showroom**  
Worcester Road  
Kidderminster DY10 1JR  
Tel: **01562 814868**

**Worcester Showroom**  
36 Carden Street  
Worcester WR1 2AT  
Tel: **01905 886930**

**5STARWINDOWS.CO.UK**



\*Credit is subject to application and affordability. Terms and conditions apply. £1000 minimum order value applies to all finance plans, with a maximum loan value of £50,000 and a minimum deposit of £99. £99 deposit option is only applicable to orders up to the value of £5,000 including VAT. Balance can be repaid within 6 months with a £29 exit charge. 5 Star Construction Services Limited, Worcester Road, Kidderminster DY10 1JR (FRN 730066) trading as 5 Star Windows & Conservatories is a credit broker and is authorised and regulated by the Financial Conduct Authority. Credit provided by Novuna Personal Finance, a trading style of Mitsubishi HC Capital (UK) PLC, authorised and regulated by the Financial Conduct Authority (Register no. 704348).

# AUTUMN SALE

01789 299446  
www.carpetwise.net

**CLEARANCE SUITES AVAILABLE**  
For quick delivery



**RELAX IN COMFORT**

GREAT BRITISH FURNITURE

# PLUS SAVE up to an EXTRA £200

T&Cs apply\*

**Amtico First**

AMTICO 15 YEAR WARRANTY



**BIG SAVINGS** on corner and chaise sofas

**PLUS SAVE up to £200**



**FREE** estimating & quotations  
**EXPERIENCED** flooring fitters



**Stock Carpets more than 50% off**

10 YEAR FULL WARRANTY  
STAIN RESISTANT EASY CLEAN CARPET

**THERE'S MORE RANGES FOR LESS** across all our departments

**MADE TO MEASURE** Curtains, Blinds & Soft Furnishings  
**ORDER NOW** for pre Christmas installation

**SAVE up to £200** on designer fabrics



**HYPNOS**

Novuna  
Interest free finance now available  
Ask a member of the team for details

**FANTASTIC SAVINGS** Ask about our KING for the price of a DOUBLE

**EXTRA SAVINGS** on selected ranges

0% APR



**CARPETWISE**  
CURTAINWISE · FURNITUREWISE

2-4 Wharf Road  
Stratford upon Avon  
CV37 0AD

Visit our Showroom:  
Monday - Saturday 9.00 - 17.00

**FREE** Parking right outside

\*For Extra Discount Terms & Conditions, please visit:  
www.carpetwise.net/extra-discount-october-2025



**Beaton Barkers celebrate their success at the Pet Industry Federation Awards. Picture by Andy Doherty. s**

**ON THE MOVE:** A LONG-ESTABLISHED Bromsgrove picture framer, which has been based in The Strand for 32 years, is moving to a new premises.

Artyfacts will be set up in its new home at 56 Broad Street, Sidemore, ready for January 5 next year.

It will continue to operate from its current shop on The Strand until December 20. The new premises is much larger and has its own private customer car park.

Gavin and Sarah from Artyfacts thanked their loyal customers for all their business and support over the years and are looking forward to seeing them at their new home in the new year.

A BROMSGROVE dog walking business said it was 'truly humbled' after winning a top award.

Beaton Barkers scooped Dog Walking Business of the Year at the Pet Industry Federation Awards held last Thursday.

The firm also achieved finalist positions in the Dog Grooming Business of the Year and Kennels of the Year categories.

These achievements place Beaton Barkers in the top one per cent of pet businesses in the country, as recognised by the Pet Industry Federation.

Founded during the early days of the pandemic in 2020, Beaton Barkers launched its dog walking service to support key workers such as paramedics and nurses who

were working tirelessly on the front lines.

It now offers tailored walks for dogs of all breeds and sizes, as well as professional dog grooming, pet sitting at home, and comfortable kennel boarding for pets.

Darron Burness, owner of Beaton Barkers, said: "Winning Dog Walking Business of the Year is an incredible honour, and being finalists in two other categories is beyond what we imagined."

"To be recognised among the best 1 per cent of pet businesses in the UK is a testament to the hard work and dedication of our team."

"We started this journey to help key workers during a challenging time, and to see how far we've come is truly humbling."

# The flavour of a real success

STAFF at a Bangladeshi curry house in Droitwich are celebrating after winning West Midlands 'Restaurant of the Year'.

Entouraj Indian Kitchen in Kidderminster Road, Cutnall Green, was crowned a star-studded ceremony held at the Park Plaza Hotel in Westminster on Sunday.

Entouraj is one of 13 regional restaurants to have been honoured across the country at the glittering event, which marked the 65th anniversary of the Bangladesh Caterers Association (BCA).

Owner Shah Shahid said: "We are delighted to be recognised by the BCA and are so proud to have won this award against some of the region's greatest curry houses."

At the ceremony, industry professionals celebrated the impact of the Bangladesh Caterers Association since its formation in 1960.

The ceremony was presented by stand-up comedian Maisie Adam and Talk TV's Ian Collins and a message of good wishes was received from King Charles III and Prime Minister Sir Keir Starmer.

Atik Rahman, BCA Awards Convenor, said: "This year's awards have been a resounding success, showcasing the most outstanding talent in our industry and charting the progress of British curry culture over the past



65 years. "It has been incredibly rewarding to see the appreciation for Bangladeshi cuisine continue to grow in the UK."

"Our forefathers have created a legacy that we can all celebrate while shaping an exciting future for our sector."

Oli Khan, BCA President, added: "Bangladeshi curry is part and parcel of modern British life, and these awards are a celebration of the incredible talent that continues to shine across our industry. "Chefs and restaurants are always looking to innovate to make sure diners can enjoy the very best experience and we are working hard to make the next 65 years even more successful for Bangladeshi cuisine."

**All smiles for staff at Entouraj Indian Kitchen as it was named curry house of the year. s**

**Direct Floors**  
Home service

Carpets | Vinyls | Laminates | Wood

Shop at home for your new carpet and flooring and receive up to 30% off shop prices. We are COVID SAFE with 1,000's to choose from with our mobile showroom!

- ◆ Mobile showroom to your home
- ◆ 1000's Samples to your door
- ◆ Fully qualified insured fitters
- ◆ Family run business since 1999
- ◆ Furniture moved & carpets uplifted for OAP'S & disabled free of charge

Find us on **facebook**

Happy to help!

Call 7 days a week 8am-9pm  
**01527-894777**  
[www.direct-floors.co.uk](http://www.direct-floors.co.uk)

# Ready for some Christmas Cheer

★★ NOW AVAILABLE ★★

**BUY NOW  
PAY LATER**

SPREAD THE COST  
OF YOUR NEW KITCHEN

Transform today, pay later.

**CALL FOR DETAILS**

**...with nothing to pay  
until next year!**

At Joe's Doors, we can give your kitchen a brand new look – without the mess, stress or massive price tag.

**With no ripping out or emptying of cupboards**, we replace your existing **doors, panels and trims** to completely transform your kitchen – often in just **two days**.

Choose from a huge range of stylish designs and enjoy a stunning new space that feels like a Christmas miracle – because it kind of is.

- ★ **Transform today, pay later** – with **Buy Now Pay Later** finance
  - ★ **Free design, free quote, free survey**
  - ★ And absolutely **no pressure** – just **Joe's honest advice**
- Ready for some Christmas Cheer?

**Book your free visit today with Joe's Doors – and fall in love with your kitchen all over again.**



✓ NO NEED TO EMPTY CUPBOARDS ✓ NO MESS, NO FUSS ✓ FITTED IN A DAY OR TWO ✓ MADE TO MEASURE

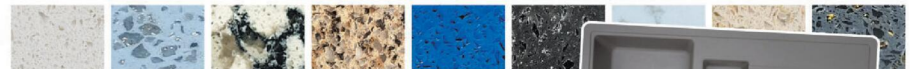


**QUARTZIZE**

**Complete the look with a natural stone overlay from Quartzize**

Why replace your worktops when this unique quartz overlay simply fits over your existing surface. Here are some of the amazing benefits:

- **Timeless** – Looks clean and modern.
- **Hygienic** – A perfectly smooth surface.
- **Easy care** – Wipe with a neutral cleaner.
- **Durable** – Tough and scratch resistant.
- **Easily Installed** – Fitted in less than a day.



**Three easy steps to transform your kitchen:**

- 1** We'll pop along and take some measurements...
- 2** Choose from our range of doors and worktops...
- 3** Our fitters will come back and transform your kitchen.

**JOE'S DOORS & OVERLAYS**



**01527 962146 • joesdoors.co.uk**

Lines Open: Mon - Fri: 8.30am - 8.00pm, Sat: 8.30am - 6.00pm, Sun: 9.00am - 5.00pm. Over 30 years experience.



**XMAS OFFER**  
**FREE SINK WORTH £229\***

Present this voucher to our Home Consultant on the day of your survey.



\*limited period promotional voucher. Terms and conditions apply.

# DISCOVER STRATFORD-UPON-AVON COLLEGE'S NEW CAMPUS AT OPEN EVENT



Stratford-upon-Avon College will be welcoming visitors to its next open event on **Saturday 15th November, 10am-2pm.**

School leaver courses will be of interest to those seeking a practical route towards either university or the workplace. Level 3 courses - which can be worth up to the equivalent of 3 A-Levels - allow students to progress to university directly on completion. Courses also provide students with the necessary skills, knowledge and practical experience to head directly into the world of work.

The event will give local people the opportunity to explore the College's newly redeveloped campus. Visitors can experience the College's brand-new TV & Radio Studios where Digital Media Production students will

be demonstrating use of the industry-standard equipment, explore the refurbished theatre spaces, discover the new library, gym, construction workshops and more. The College's freshly landscaped 'green heart' will also be on display.

College Principal, Dr Rebecca Gater, comments: "This is an exciting time to be joining Stratford-upon-Avon College with our £13 million investment project now complete. It's always a pleasure to welcome prospective students to our open events and we look forward to showing visitors our brand-new state-of-the-art facilities!"

**Open Event**  
 Saturday 15th November  
 10am-2pm  
 Pre-register now!

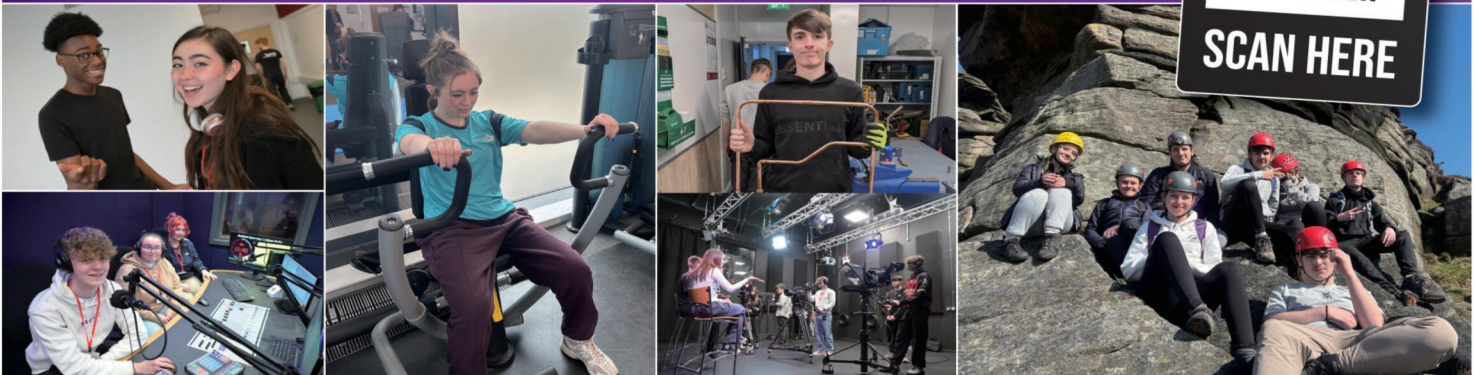
## SCHOOL LEAVER COURSES

**APPLY NOW!**

- Acting
- Art & Design
- Apprenticeships
- Backstage Production Arts
- Business
- Cabin Crew
- Computing & Digital Technologies
- Construction
- Dance
- Digital Media Production
- Early Years & Education
- Electrical Installation
- Fashion
- Foundation Learning
- Graphic Design
- Health & Social Care
- Make Up for Stage & Screen
- Motor Vehicle
- Musical Theatre
- Music Performance & Production
- Performing & Production Arts
- Photography
- Plumbing
- Sport
- Travel & Tourism
- Uniformed Protective Services



PRE-REGISTER FOR THE EVENT NOW AT [WWW.STRATFORD.AC.UK](http://WWW.STRATFORD.AC.UK)



**OPEN EVENT:**  
 Saturday 15th November  
 10am-2pm **PRE-REGISTER NOW!**



# Mayor's praise for dedicated Tanya

**A REFUGEE who has spent the last year collecting donated UK medical equipment to send to soldiers and civilians injured in the war in her Ukrainian homeland, has been recognised by the Mayor of Worcester.**

Tanya Kyiko, who has resettled with hosts in Bromsgrove, has sent a total of two tonnes of consignments to Ukraine, including hundreds of crutches, scores of support boots as well as syringes, medicines and much more.

And her dedication has now been recognised by Coun Dr Matt Lamb.

Tanya said she was surprised with the recognition.

"Of course, getting this certificate was pleasant and I appreciate the care and support of the mayor of Worcester. But my best award will be the fastest and fairest victory of Ukraine in this bloody war," she added.

by Philippa Mingins

Coun Dr Lamb offered his heartfelt congratulations to Tanya for her extraordinary compassion and dedication.

"Her appeal for medical equipment to support wounded soldiers in her home city of Kharkiv has inspired an amazing response, uniting people across our region in a shared act of kindness," he said.

"Tanya's determination to help others, despite the challenges she has faced as a refugee, is truly humbling.

"Her work reminds us of the strength of the human spirit and the power of community to reach beyond borders. I am proud to recognise her remarkable contribution and the hope and humanity she represents."

"Tanya is now determined to continue her work and has renewed her appeal for donated supplies to send to her 'heroes at the frontline'.

She added: "The situa-

tion in Kharkiv is terrible, especially now when it is getting colder.

"The city itself and the Kharkiv region are bombed every day and night with bombs, missiles, drones.

"A lot of people are being killed, injured, shell-shocked, frightened.

"A couple of days ago, the Russians launched a missile that hit the hospital. This strike caused a huge fire.

"Can you imagine this

hell on earth? And things like these are happening all the time throughout Ukraine."

Tanya is now appealing for any surplus medical equipment, medicines or dressings.

She has also recently sent sleeping bags and yoga mats, rucksacks, candles and folding chairs for drone operators to sit on.

Email [tanya.leg59@gmail.com](mailto:tanya.leg59@gmail.com) or visit [info@brwr.uk](http://info@brwr.uk) to help out.



Tanya Kyiko with just some of the hundreds of crutches which she sends to help injured soldiers in her homeland.



Raymond 'RED' Reddington is back where he belongs, thanks to Bromsgrove Police. s

## Police on RED alert for woolly wanderer

A 'RED SHEEP' who escaped from his home in Rock Hill, Bromsgrove, was recaptured by town police officers last Friday.

The four-legged fugitive - Raymond 'RED' Reddington - is a bold tup who decided to stroll on an unscheduled stroll through Rock Hill.

Bromsgrove Police could have been left looking a little sheepish, may have been lambasted by the public (or even for the chop) had they been fleeced by the runaway.

But officers rose to the challenge and,

posting pictures on Facebook, they said:

"Thanks to a quick-thinking member of the public and some very kind homeowners, our woolly wanderer was safely secured and has now been successfully reunited with his flock of friends.

"Case closed. RED is back behind baaaaars - well, behind a fence at least.

"Big thanks to everyone who helped bring this 'baa-d guy' in."

At least officers would have slept well in their beds - without even the need of counting sheep.

*All & Sundry Productions Presents*  
The 21<sup>st</sup> Anniversary pantomime

# Cinderella

DIRECTED BY  
ALISON BERRISFORD

DECEMBER  
13<sup>TH</sup> - 23<sup>RD</sup>

**COBHAM THEATRE**  
BROMSGROVE

**01527 579679**  
ext. 616

**TICKETS**  
**£16 - £18**

*Special Discount and Offers Available*

For full details of dates, times, all available discounts and to book see our website or scan the QR code below

Official Sponsors  
**Royal Motorways**  
COACH OPERATED DATEWAYS

[www.allandsundry.uk](http://www.allandsundry.uk)



avonroofing6@gmail.com • www.avon-roofing.co.uk

PROFESSIONAL • RELIABLE • TRUSTED

- ◆ New roofs
  - ◆ Re-roofs
  - ◆ Roof repairs
  - ◆ Tiles/slates replaced
  - ◆ UPVC ROOFLINE PRODUCTS
  - ◆ Fascias
  - ◆ Cladding
  - ◆ Soffits
  - ◆ Guttering
  - ◆ Down pipes
- ◆ Flat roof solutions
  - ◆ EPDM rubber roofs
  - ◆ Chimneys rebuilt
  - ◆ Re-pointing
  - ◆ Re-bedding
  - ◆ DRY VERGES
  - ◆ DRY RIDGES
  - ◆ EAVES PROTECTION SYSTEMS (EPS)

**15% OFF**  
when mentioning this advert

*Commercial roof projects undertaken*

*Free Quotations - All Work Guaranteed*

Call Jake on 07389 844 856 or 01789 507 131 for a free quotation

Find us on Google

# New team aiming for improvements

A NEW caretaker service has been launched to improve communal areas across all 276 Redditch Borough Council-managed housing blocks of flats.

The nine-member team now cleans fixtures, fittings, and hard-to-reach areas, maintains safety signage and noticeboards, and carries out weekly fire alarm and monthly emergency lighting checks. They also inspect for repairs and ensure fire exits are clear on every visit.

The service was introduced after a decision by councillors earlier this year to overhaul outdated caretaking and cleaning services. Previously, only 20 per cent of blocks had regular caretaking and cleaning undertaken, with more than 200 relying on ad-hoc services.

Just 42 per cent of residents had been satisfied with the upkeep of shared spaces and the idea of introducing a new universal service gained support during summer Tenant Roadshows.

As part of the roll-out the council has written directly to tenants and leaseholders living in these blocks to explain the service, outline what to expect and share contact details.

Drop-in sessions have been organised to enable tenants and leaseholders to ask questions or give feedback.

Portfolio holder for housing, Coun Bill Hartnett, said: "This is the latest reflection of our commitment to improvement and to listening to our residents. With almost three in five tenants previously dissatisfied with communal areas, we knew change was needed. "Now the new team is in place and equipped



to deliver that. By tailoring services to local needs and involving residents more, we aim to create cleaner, safer, and more welcoming shared spaces across all our blocks. Crucially, this also supports fire safety compliance."

The new service charge is £6.40 per week, less than most tenants paid under the previous limited service and is covered by Universal Credit or Housing Benefit for eligible tenants.

For those who may struggle to pay, councillors have established a local Financial Support Fund. Anyone needing help is urged to talk to their housing officer if they are going to have problems paying the service charge.

Coun Hartnett added: "It's all part of our ongoing drive to enhance our housing services in line with the Regulator of Social Housing's consumer standards, particularly around safety, quality, and tenant engagement."

Coun Bill Hartnett with new team members Scott Halward-Smith, Joshua Lewis, Kevin Moore, Gordon Rogers and Connor New. Picture by Marcus Mingsins 4225015MMR



*The Bell Inn*

**Lunchtime Specials and Under 60s Menu £10.25**

Tuesday to Saturday  
12 noon to 5pm

**Golden Oldies Only £9.75**

Golden Oldies also available  
Tuesday to Saturday  
12 noon - 5pm

**Mid Week Roast on a Thursday £12.25**

**3 course Sunday Lunch £19.25 - Sunday 12 noon - 4pm**

**Full Main Menu Tuesday - Saturday 12 noon - 9pm, Sunday 12 noon - 4pm**

Evesham Road, Astwood Bank, B96 6AX Tel: 01527 894213

REDDITCH BID PRESENTS

# REDDITCH CHRISTMAS LIGHTS *Switch On*

## *On Stage*



- 17:15 - Mitch Loveridge
- 17:45 - **Lights Switch On**
- 18:00 - Choir by the Big Sing
- 18:10 - Shaun Paul Smith Dance Academy
- 18:20 - Indigo Arts
- 18:35 - Top Box
- 19:50 - Palace Theatre Pantomime
- 19:00 - Taylor Swift Tribute
- 19:30 - Gareth Gates Performance
- 20:00 - Finish



CHART-TOPPING STAR AND HEADLINE ACT  
**GARETH GATES**

The magic of Christmas returns to Redditch town centre this November with an evening packed full of festive fun, live entertainment, and that all-important moment when our town lights up for the season!



**SATURDAY**

29th November



**FROM**

5.00pm - 8.00pm

[www.redditchbid.co.uk](http://www.redditchbid.co.uk)

# New refuse lorries out on the streets

**FIVE new bin lorries have arrived to keep household waste and recycling collections running smoothly in Redditch.**

by **Ashleigh Osborne**  
ashleigh.osborne@bullivantmedia.com

The modern refuse trucks replace older vehicles which had reached the end of their service life in Redditch Borough Council's bin collection fleet.

Coun Sharon Harvey, council leader and portfolio holder for environmental services, said: "We're committed to ensuring people in Redditch get efficient, reliable, and resilient waste collection services."

"Behind the familiar sight of our crews emptying bins is a vital system of planning and investment that ensures they have the right tools and vehicles to deliver a high-quality service."

Redditch's nine vehicle refuse

collection fleet empties more than 2million bins-a-year.

Owing to the heavy mechanical demands of the job, they typically need replacing about every seven years, to maintain service reliability.

To support that, the borough council allocated a capital budget of about £2.1million to a strategic replacement programme. This helps reduce reliance on costly hire vehicles and mitigates the impact on the council's busy vehicle maintenance workshop, where service vehicles need more repairs as they age.

The old trucks are sold, with the proceeds going back into the public purse to improve services.

Residents across Bromsgrove and

Redditch are being reminded that brown bin garden waste collections end in the next fortnight.

For those whose first collection was on the week commencing February 24, their final ones will be next Friday, November 21, and for those whose first brown bin collections were the week starting March 3, theirs will be on November 28.

No further garden waste collections will take place until the service resumes in spring.

Bromsgrove District Council's portfolio holder for environmental services, Coun Peter Whittaker, said: "We're grateful to residents for their continued support of the garden waste service."

"Please make sure your bin is out for this final round so we can collect it efficiently."

Leader of Redditch Borough



Coun Sharon Harvey alongside two of the new refuse trucks.

Council Coun Sharon Harvey, added: "We thank residents for using the garden waste service this year and urge everyone to make the

most of the final collection." Visit this story on our website and click the link at the bottom for more information.



## Police teamwork recovers stolen market equipment

**QUICK-ACTING** Bromsgrove Police officers recovered equipment for the town's market and a trailer which were stolen overnight between last Friday and Saturday.

The brazen thieves took £10,000 worth of property owned by Bromsgrove

Council and it meant the usual Saturday market in the High Street had to be scaled down.

Further costs were incurred as barriers in front of the trailer were destroyed during the theft and a car park was potentially put out of action.

The equipment and trailer was stolen at 8pm and recovered by a sergeant and PCSO from the Safer Neighbourhood Team (SNT).

The SNT said: "Thanks to sharp policing and rapid teamwork, the trailer is now safely back with the

council. Investigations into the suspected thieves are ongoing, and we remain hopeful that arrests will follow soon."

**Police recovered the trailer and market equipment - which was valued at £10,000 worth of property. s**



**THE FOX INN**  
CHADDESLEY CORBETT

**Bookings now being taken for Christmas**

**Christmas Fayre Menu** (excludes Sundays)  
Adults: £20 / Children: £15  
Single course festive carvery - Adults: £15 / Children: £12

**Christmas Dinner**  
**FULLY BOOKED**  
Adults: £30 / Children: £50

**Boxing Day Menu**  
Adults: 3 courses, £25 / Children: 3 courses, £25

**New Years Day Menu**  
Adults: 3 courses, £25 / Children: 3 courses, £25



The Fox Inn Lower Chaddesley, Kidderminster DY10 4QN  
Tel 01562 777247 | thefoxinnchaddesley.co.uk



**SPECIALISTS IN ALL ASPECTS OF ROOFING**



**New Roofs - Roof Repairs - Flat Roofing**  
Fascia, Soffits & Guttering - Cladding  
Moss Removal Chimney / Ridge Tile Repointing  
Local References Available - Free Quotations

**For a FREE quote, contact the local company you can trust**

**Birmingham - 0121 667 8938**  
**Redditch - 01527 906 586**

Park House, Bristol Rd South, Rednal,  
Birmingham B45 9AH  
www.longbridgecladdingandroofingltd.co.uk  
sales@longbridgecladdingandroofingltd.co.uk

Vintage Trains  
**THE POLAR EXPRESS™**  
*Train Ride*

**Birmingham Moor Street Station**  
 22nd November - 23rd December



**Book your Golden Tickets Today!**  
 Scan the QR Code or visit [vintagetrains.co.uk](http://vintagetrains.co.uk)



Train equipment and event elements vary by location. Inquire at your local venue for full details.  
 THE POLAR EXPRESS and all related characters and elements © & ™ Warner Bros. Entertainment Inc. WB SHIELD: TM & © WBEI (s25)



A CHARITY has set up its base at NewSong Community Church in Bromsgrove to support people with neurological motor disorders.

The Empower Your Journey sessions are with Megan Baker House which offers conductive education – a holistic approach – to help those with conditions, such as Parkinson’s, stroke, Cerebral Palsy, Multiple Sclerosis and other movement conditions.

The sessions – which take place at the church in Broad Street every Wednesday – foster independence through tailored movement and learning programmes.

Sessions are personalised, conveniently accessible and build skills for daily life. Virtual options are also available.

Anyone wanting to find out more can visit: [meganbakerhouse.org.uk](http://meganbakerhouse.org.uk) or call 01531 633840 and there is a free consultation with three no-obligatory sessions.

**Geoff Holland and Neil Cund - two of the participants who have benefited from the Bromsgrove sessions. s**

# Move set to help area’s small firms

MANUFACTURING small and medium-sized enterprises (SMEs) in Redditch and Bromsgrove are set to benefit from tailored support after the appointment of Warwick Manufacturing Group (WMG) to deliver the Innovation Lighthouse programme to the areas.

WMG, a research and education department at the University of Warwick, will deliver the Innovation Lighthouse programme which aims to drive growth, competitiveness, and resilience in the manufacturing sector.

The programme is designed to help small and medium-sized manufacturers improve their productivity, and develop new products and processes, guiding them from initial concept through to implementation.

Businesses will receive support tailored to their specific needs, covering all stages of development. In addition, match-funded grants will be available to participants to assist with the delivery of their project.

Dean Baker, WMG’s head of business development, said the group was delighted to have been chosen by Redditch Borough and Bromsgrove District Councils to deliver the Innovation and Productivity Business Support Programme.

“The programme will provide

best-in-class support for SMEs in Redditch and Bromsgrove, combining WMG’s deep manufacturing expertise, world-class facilities, academic and research excellence, and agile, impactful delivery.”

The Innovation Lighthouse programme has received £100,000 for Redditch and £100,000 for Bromsgrove businesses from the UK Government through the UK Shared Prosperity Fund and is available to businesses in both areas.

Redditch Borough Council leader, Coun Sharon Harvey, said: “This is a fantastic opportunity for Redditch’s manufacturing businesses to access tailored support and funding that can help them grow and flourish. WMG’s expertise will be invaluable in helping our local firms stay competitive and future ready.”

Bromsgrove District Council leader Coun Karen May, said: “We’re pleased to see WMG appointed to deliver this important programme in Bromsgrove.

“Supporting our manufacturing SMEs is key to driving local economic growth, and this initiative offers the practical tools and funding needed to help our businesses thrive.”

Email [info@worcestershiresgrowth-hub.co.uk](mailto:info@worcestershiresgrowth-hub.co.uk) or call 01905 677888 for more information.

PUNTERS at a Bromsgrove pub sang ‘Where’s ya scooter gone’ as police seized two illegal e-scooters.

Shortly after the Remembrance Day Service in Bromsgrove town centre, officers stopped and seized two e-scooters being ridden illegally through the pedestrianised area of the town.

Drinkers at The Golden Cross pub showed their appreciation for the police’s work by cheering them on, singing the football style chant.

Bromsgrove Police said: “Just a reminder that the educational phase is over and officer’s will take positive action if these illegal scooters are seen on the road/pavements, and particularly pedestrianised areas.”

It is illegal to ride privately-owned e-scooters or any electric powered scooter unless it is taxed, has an MoT and the rider is insured.

Tax, insurance and MoTs do not currently exist for private e-scooters which means riding them on any public roads, pathways, pavement or land is illegal.

**Where’s ya scooter gone’ sing punters as two illegal e-scooters were seized. s**



# S4F

## GIFT A SHOOTING EXPERIENCE THIS CHRISTMAS

ARCHERY | CLAY SHOOTING | RIFLE SHOOTING

### 01527 575141

[mark@shooting4fun.co.uk](mailto:mark@shooting4fun.co.uk)

Oaklands Outdoor Activity Centre, Ditchford Bank Rd, Hanbury B60 4HS

For more information, or to book, please call

## 03332 342 514

Quote **OSG**

VALUE PROMISE

★★★★★

Trustpilot

Reader Travel

### BOURNEMOUTH & WEYMOUTH

Departing Mon 23 Mar '26

Take a great-value trip to stunning Dorset, as we make our base in Bournemouth, soak up the nautical atmosphere of Poole and explore the traditional seaside resort of Weymouth, with the option of an excursion to Salisbury and a 2-for-1 bar offer at our hotel!

**Your break includes**

- ✓ Return coach travel from **Redditch, Bromsgrove**
- ✓ 4 nights at a selected hotel in Bournemouth (JG2 rating) with dinner & breakfast
- ✓ **2 for 1 bar** (6pm-9pm) on selected drinks
- ✓ Light entertainment every evening
- ✓ Excursions to Poole & Weymouth
- ✓ Optional excursion to Salisbury (£15pp)

### ISLE OF WIGHT WEEKEND

Departing Fri 6 Mar '26

A long weekend by the sea beckons on this lovely escape to the Isle of Wight. Beloved since Queen Victoria’s reign, follow in the footsteps of royalty and relax at our base in a popular seaside resort and discover other highlights during an optional trip!

**Your break includes**

- ✓ Return coach travel & ferry crossings from **Bromsgrove**
- ✓ 3 nights at the Shanklin Beach Hotel, Shanklin (JG2+ rating) with dinner & breakfast
- ✓ Entertainment some evenings
- ✓ Excursion to Newport

**Optional Island Highlights tour (£15pp)**

5 Days by Coach *only* £259

Single Supplement £75

\*These packages are subject to Just Go! Holidays terms & conditions. Coach bookings are protected by Bonded Coach Holidays & the Association of Bonded Travel Organisers Trust Ltd. A+ holidays are ATOL protected No.10399. Prices are per person, based on two people sharing a room & based on bookings made up to 7 days post publication, after which prices may fluctuate. Choices of date, hotel, airport or pick up location may incur a supplement. Please see website or call for full details.

4 Days by Coach *only* £239

Single Supplement £50

Visit us online at

[justgoholidays.com/OSG](http://justgoholidays.com/OSG)

033 numbers are free within inclusive minutes packages otherwise standard rates apply.

justgohols

### BYD ATTO 2 Boost

£325 DEPOSIT | £325 PER MONTH

0.5% APR



### BYD DOLPHIN SURF Active

£189 DEPOSIT | £189 PER MONTH

0% APR



#### BYD STOURBRIDGE

Enville Street, Stourbridge, DY8 1XW  
sales@bydstourbridge.co.uk | 01384 438022

Web: www.bydstourbridge.co.uk



#### BYD KIDDERMINSTER

114 Worcester Road, Kidderminster DY10 1HU  
sales@bydkidderminster.co.uk | 01562 312259

Web: www.bydkidderminster.co.uk



Retail Sales Only. Subject to availability at participating retailers only on vehicle orders from 08/10/2025 to 31/12/2025. 0% APR available on 49 month Personal Contract Purchase on all BYD Dolphin Surf Active. Retail Sales Only. Subject to availability at participating retailers only on vehicle orders from 08/10/2025 to 31/12/2025. 0.5% APR Representative available on 49 month Personal Contract Purchase on all BYD ATTO 2 Boost. Final Payment to own the vehicle, (i) Return the vehicle or (ii) Part exchange the vehicle where equity is available. Prices correct at the time of being published and are subject to change without notice. Further charges may be made subject to the condition or mileage of the vehicle. Finance subject to status. Terms and conditions apply. Applicants must be 18 or over. Guarantee may be required. Santander Consumer Finance RH1 1SR.

### BYD ATTO 2 Boost

£325 DEPOSIT | £325 PER MONTH

0.5% APR



### BYD DOLPHIN SURF Active

£189 DEPOSIT | £189 PER MONTH

0% APR



#### BYD STOURBRIDGE

Enville Street, Stourbridge, DY8 1XW  
sales@bydstourbridge.co.uk | 01384 438022

Web: www.bydstourbridge.co.uk



#### BYD KIDDERMINSTER

114 Worcester Road, Kidderminster DY10 1HU  
sales@bydkidderminster.co.uk | 01562 312259

Web: www.bydkidderminster.co.uk



Retail Sales Only. Subject to availability at participating retailers only on vehicle orders from 08/10/2025 to 31/12/2025. 0% APR available on 49 month Personal Contract Purchase on all BYD Dolphin Surf Active. Retail Sales Only. Subject to availability at participating retailers only on vehicle orders from 08/10/2025 to 31/12/2025. 0.5% APR Representative available on 49 month Personal Contract Purchase on all BYD ATTO 2 Boost. Final Payment to own the vehicle, (i) Return the vehicle or (ii) Part exchange the vehicle where equity is available. Prices correct at the time of being published and are subject to change without notice. Further charges may be made subject to the condition or mileage of the vehicle. Finance subject to status. Terms and conditions apply. Applicants must be 18 or over. Guarantee may be required. Santander Consumer Finance RH1 1SR.

# Archive discovery is music to the ears of historians

A TEAM of musicologists at Royal Holloway, University of London have unearthed the printed score of a previously lost Henry Purcell song after searching the online archives of Worcestershire County Council's Explore the Past website.

Henry Purcell was the leading English composer of the 17th century, known for masterpieces such as Dido and Aeneas and The Fairy Queen.

The song was listed on the website as 'Purcell song.'

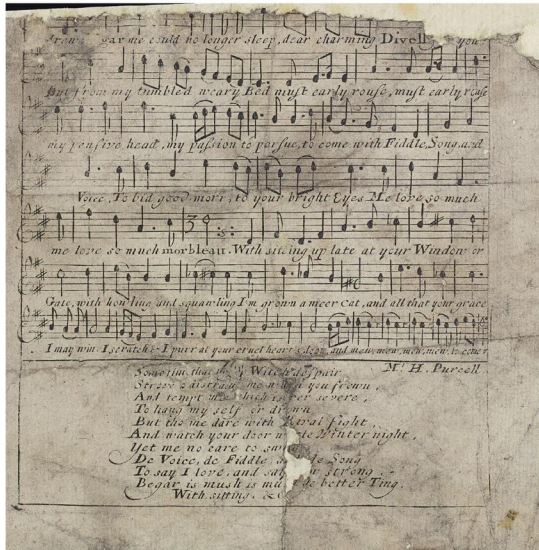
Through the expertise of the Royal Holloway team, they were able to identify the song's significance, further expanding our understanding of Purcell's work.

This find was made possible by Worcestershire County Council's ongoing Online Archive Catalogue project, which is making the county's extensive historical collections more easily searchable and accessible to a wider local, national and international audience online.

Original archive material can be requested and retrieved for research at the Council's Explore the Past service at The Hive.

Hannah Perrott, assistant director for communities at Worcestershire County Council said: "The Online Archive Catalogue project is an essential step in preserving our county's history while making it accessible to everyone."

"The discovery of the Purcell song is just one example of what's possible when archive cata-



logues are made available online.

"The work we're doing now has the potential to uncover countless more significant findings in the future, and we're excited to see what comes next."

Visit [www.explorethepast.co.uk](http://www.explorethepast.co.uk) for more information.

**Purcell Song' manuscript found in Worcestershire's Archives.**

# Turning the spotlight on male victims of violence

POLICE and Crime Commissioner John Campion has funded a number of initiatives across the West Mercia force area, including services that support victims of domestic abuse.

According to UK charity ManKind Initiative, one in every five men will become a victim of domestic abuse at some point in their lifetime, yet they make up only one in 20 victims accessing the support available from local specialist services.

Supporting Male Victims of Domestic Abuse Day, the PCC is highlighting the range of services he funds, that are available to men across Worcestershire.

West Mercia Women's Aid and Cranstoun are specialist Independent Domestic Violence Advisors (IDVAs) work with men and boys affected by domestic abuse throughout West Mercia.

IDVAs are specialist 'safety workers' who provide advice and support for those who are at high risk of harm from domestic abuse. IDVAs also work closely with local hospitals.

West Mercia Rape and Sexual Abuse Support Centre and Victim Support

Gateway (VSG) are also supported by the PCC. The support centre is an independent Sexual Violence Advisor (ISVA) works with male victims of sexual abuse.

Victim Support Gateway (VSG) is made up of trained professionals and provides support to any victim of crime.

It doesn't matter when the crime happened, or if it's been reported it to the police, they'll discuss with the individual how they've been affected by crime, provide immediate support and information, and help find the right service for longer-term specialist support.

PCC John Campion said: "Domestic abuse destroys the lives of victims and their families and it's happening across West Mercia."

"Today's message of 'Men You Are Not Alone' is designed to remove the stigma that men cannot be victims of domestic abuse too, and to encourage them to speak up and seek the support they need."

"I fund a number of services that support victims of domestic abuse, and I urge anyone who needs advice or support to reach out to them."



## STOKE PRIOR SPORTS & COUNTRY CLUB

# HO-HO-HO! DECEMBER FUN FOR EVERYONE



**MARKET OPEN 12PM - 6PM**

**STALLS**

**FOOD VANS**

**LIVE MUSIC: CLARE PORTMAN**

**CAROLS: GOT TO SING CHOIR**

**SANTA ARRIVAL**

**CHRISTMAS TREE LIGHTS SWITCH-ON**

**FREE ENTRY**

**CHRISTMAS MARKET SATURDAY 6TH DECEMBER**

**FRIDAY 5TH DECEMBER**  
FROM 7.30PM

HB9 HB9

**FREE ENTRY**

**CHARITY CHRISTMAS DISCO**

**FRIDAY 12TH DECEMBER**  
EYES DOWN 8PM

17 35 11 59 70

**CHRISTMAS BONKERS BINGO**

TICKETS £20

BOOGIE AFTER THE BINGO!

**SUNDAY 21ST DECEMBER**  
2PM - 4PM

**Magic Al's CHRISTMAS SHOW**

£6 PER CHILD

FUN | GAMES | WIN PRIZES | SINGING | DANCING

**WEDNESDAY 31ST DECEMBER**  
7.30PM - 1.30AM

**Cheers To 2025! NYE PARTY NIGHT**

DISCO & BUFFET

TICKETS £10

**FOR TICKETS SCAN QR CODE OR EMAIL [info@stokeprior.club](mailto:info@stokeprior.club)**

Stoke Prior Sports & Country Club, Westonhall Road, Stoke Prior, Bromsgrove B60 4AL | [stokeprior.club](http://stokeprior.club) | [facebook.com/StokePriorClub/](https://facebook.com/StokePriorClub/)

Spotlight on

# ALCESTER

## Alcester really does have it all

**Nestled in the rolling countryside of south Warwickshire, Alcester is one of the county's most picturesque and welcoming market towns, a place where history, community spirit, and independent shopping come together.**

Once a Roman settlement known as Alauna, Alcester's story stretches back nearly two thousand years. Today, its pretty Tudor and Georgian buildings line the streets, creating a townscape full of charm and character. The High Street and surrounding lanes are dotted with independent shops, cafés, pubs, and

restaurants, many of them family-run, making Alcester the perfect destination for a relaxed day out or a spot of leisurely retail therapy.

Throughout the year, the town buzzes with activity. Seasonal markets, music and food festivals, and community events draw visitors from across the region. Whether it's the Christmas lights switch-on, Alcester Food Festival, or one of the popular artisan markets, there's always something happening to bring people together.

With easy parking, welcoming locals, and plenty to see and do, Alcester makes for an ideal weekend outing, whether you're a history enthusiast, a browser of independent boutiques, or simply looking for a change of pace in a beautiful setting.



### CELEBRATE Christmas

AT

## THE FROG

RIVERSIDE BAR & RESTAURANT

Step into the festive season with us and enjoy a menu crafted To bring warmth, joy, and indulgence to your table. From Comforting classics to seasonal creations, every dish is designed To capture the spirit of christmas and make your celebrations Truly unforgettable

Share the Christmas cheer!

Tag us @frogbidford and spread the festive vibes

### Festive Menu

2 course for £25.99 | 3 course for £30.99

**Vegetarian Sharing Board £20.95**  
a seasonal celebration of flavour: halloumi bites, golden potato pops, grilled pineapple & cinnamon skewers, rich sicilian caponata, and delicate vegetable gyozas.

**Shrimp Ceviche Bao Bun (GF) £9.95**  
a pillowy bao bun filled with shrimp ceviche

**Chicken Liver, Red Currant & Brandy pâté £8.45**  
served with a hazelnut & chive broche bun

**Prosciutto & Emmental Stuffed Turkey Crown (GFO) £18.95**  
served with creamy Parmesan mash, honey-glazed carrots & parsnips, Brussels sprouts, gorgonzola broccoli gratin, gravy.

**Crab & Lobster Risotto (GF) £18.95**  
creamy risotto with white crab & marinated lobster meat and boiled fennel, confit tomato, and pickled fennel.

**Slow-Cooked Lamb Shank £19.45**  
six-hour braised lamb shank in a rich red wine, tomato, and herb sauce, paired with gnocchi in the same indulgent jus and crispy cavolo nero

**Sea Food Sharing Board £22.95**  
a luxurious catch of whitebait, crispy squid, king prawns, prawn lollipops, and prawn gyozas, perfectly paired with tartare sauce and pepper mayo.

**Gin-Cured Beetroot Salmon £9.95**  
served on toasted focaccia with silky prawn cream, saffron mayo, and basil oil.

**Pear, Blue Cheese & Candied Walnut Salad (GF, V) £8.45**  
mixed leaves, poached pears, candied walnuts, and blue cheese, dressed in honey mustard vinaigrette.

**Whiskey-Glazed Butternut Squash & Pearl Onion Tart (V) £16.95**  
with roasted carrot & parsnip, Brussels sprouts, and broccoli gratin.

**Grilled Rib-Eye Steak 8oz (GF) £23.95**  
succulent rib-eye, flame-grilled to perfection, served with wasabi mash, tender pak choy, and confit cherry tomato.

**Wagyu Festive Burger £15.95**  
juicy wagyu beef layered with caramelised onion, melted brie, crisp bacon, romaine lettuce, and gherkin in a brioche bun.

**Black Battered Cod & Chips £17.95**  
charcoal-black battered cod, golden chips, mushy peas, lemon wedge, and tartare sauce.

**Homemade Chocolate Cookie Dough (V) £7.45**  
Served warm with caramel ice cream.

**Cheesecake Of The Day (V) £7.45**  
Ask your server for today's festive flavour.

**Panettone Pudding with Custard Cream (V) £7.95**  
Infused with Disaronno, set on a white chocolate base, and topped with vanilla ice cream.

**Apple & Toffee Rice Pudding\* (GF) £7.45**  
Creamy rice pudding drizzled with apple & toffee sauce.

**Treacle Tart (V) £7.95**  
served with vanilla ice cream and hot custard cream

V - vegetarian, VE - vegan, GF - gluten free, GFO - gluten free option  
There is a optional 10% gratuity on all festive menus which is automatically added to your bill. Gratuities are appreciated and fully passed to the team.  
Please advise a team member when ordering your food of any allergies or intolerances, even if you are a regular guest, as our ingredients and recipes can change.  
We produce our food in kitchens with shared equipment where allergens are handled, therefore we cannot guarantee any item is allergen-free.

# Spotlight on **ALCESTER**

## The Lounge @ 26

Right in the heart of Alcester's High Street, The Lounge @ 26 has become a local favourite and a must-visit for anyone exploring the town. Housed in a quirky Grade II listed building, this café bar offers something for every time of day. Launched during lockdown, it quickly earned national recognition, winning Best Café in England in 2021, and it's easy to see why. By day, it's a cosy,

welcoming spot serving excellent coffee, homemade cakes, scones, and light lunches. By Friday and Saturday evenings, it transforms into a lively gin and cocktail bar, offering over 50 gins and a creative menu of more than 20 cocktails made with premium ingredients. It's also dog-friendly, complete with treats for your four-legged friend, and features a beautiful "secret garden" outdoor area, perfect for a peaceful



morning coffee, a light lunch with friends, or an evening cocktail under the lights.

## Camilla Jones Jewellers

For something truly special, Camilla Jones Jewellers on Alcester High Street is a standout. The business moved in 2023 into a beautifully refurbished 16th-century building, where traditional craftsmanship meets contemporary style. Inside, you'll find a carefully curated

mix of bespoke jewellery, antique and vintage pieces, and a working on-site workshop where skilled jewellers design, repair, and create. Visitors can even catch a glimpse of the creative process as they browse. Whether you're looking for a one-of-a-kind gift, a timeless keepsake, or simply appreciate fine craftsmanship, this independent jeweller is well worth a visit. Camilla Jones has also been recognised with several design and retail awards, reflecting both quality and innovation.



**THE LOUNGE**

Nestled on the outskirts of Redditch in Astwood Bank, **The Lounge** is a small, safe, friendly and very welcoming Gin & Cocktail Bar. Taken over three weeks before going into lockdown in 2020, the current owners Louise Hanks and Elizabeth French have managed to survive the pandemic by being the first bar to open for takeaway drinks, keeping the locals, and visitors from further afield, in cocktail heaven.

With over 28 cocktails to choose from the \*2 of the same cocktail for £12\* promotion between 5pm & 7pm every evening, but all evening on a Thursday, is very popular. Starting on 5th September, they will be opening every Tuesday for a Chess & boardgames night to keep the community entertained. With over 70 gins to choose from served with Fever Tree tonics, many rums, whiskeys, Lillies Ciders and draught beers, there is something for everyone, including soft drinks and milkshakes for the younger customers. Table service ensures you have a nice relaxed evening and with Karl Hanks (Manager) behind the bar, you'll receive excellent customer service.




Open Monday to Thursday 9.30am-4pm,  
 Friday & Saturday 9.30am-10.30pm, Sunday 10am-2.30pm.  
 Booking is definitely recommended to reserve a table  
 by messaging on the Facebook page (search for The Lounge)  
 calling 01527 893965  
 email [thelounge1244@outlook.com](mailto:thelounge1244@outlook.com)  
 or via a link on the website [www.theloungebars.co.uk](http://www.theloungebars.co.uk).  
 1244 Evesham Road, Astwood Bank, Redditch, B96 6A



**Camilla Jones**  
 JEWELLERY FOR THE KIND AND THE BRAVE, MADE SLOWLY WITH LOVE AND FIRE

Invite you to join us for  
**Late Night Shopping**  
 Alcester High Street  
 Tuesday 18<sup>th</sup> November  
 Until 7.30pm

Joined by:  
 Fable Heart  
 Ciao Bella Chic  
 JT Bookshop  
 Wild Bunch Florists  
 & more  
 Music, drinks and nibbles  
 Free Parking

[www.camillajones.co.uk](http://www.camillajones.co.uk)

# Spotlight on **ALCESTER**

## The Frog

Just a short drive from Alcester, in the riverside village of Bidford on Avon, The Frog is a gem for food lovers. Set right on the banks of the River Avon, this pub-restaurant combines beautiful views with a warm, welcoming atmosphere. Inside, the cosy interior features open fires and a relaxed country pub feel, while outside, the riverside terrace is perfect for sunny days. The menu focuses on fresh, locally sourced

ingredients, with hearty seasonal dishes and classic British favourites. Whether you stop in for a long lunch or a leisurely dinner after exploring Alcester, The Frog is an ideal place to unwind and soak up the best of Warwickshire's countryside hospitality.

## Jacksons Jewellers

For expert jewellery and watch care, Jacksons Jewellers Ltd in Alcester is a trusted local name. This established family business specialises in on-site



workshop services including repairs, polishing, restoration, and watch battery replacements, with many jobs completed within just a few days. Known for their quality craftsmanship and friendly service, Jacksons are as much a part of the local community as the High Street itself. Whether you're in need of a quick repair, want to restore a cherished heirloom, or simply enjoy browsing fine jewellery, this is a place where skill and service shine.

## Discover Alcester for Yourself

A visit to Alcester offers the best of

both worlds, fascinating history and modern vibrancy. With its heritage buildings, unique shops, friendly cafés, and traditional pubs, the town invites you to slow down and enjoy the simple pleasures of local life. Plan a day trip, explore the independent retailers, and treat yourself to good food and great hospitality. From coffee at The Lounge @ 26 to a riverside meal at The Frog, and from browsing Camilla Jones Jewellers to restoring a favourite piece at Jacksons, Alcester offers a truly charming day out right on Redditch's doorstep.

# JACKSONS JEWELLERY REPAIRS

High Class Jewellery Repairs Done On-Site

[www.jacksonsjewellery.co.uk](http://www.jacksonsjewellery.co.uk)



We are a family run jewellery repairers based in Alcester, Warwickshire who have been specialising in restoration repairs and rebuilds for generations. With our own work shop, industrial polishing shop and jobbing jeweller on site, we are able to cut out the 'middle man' and provide you with high quality repairs without the high prices!

Like us on Facebook

OPEN: Tuesday and Wednesday 9am-4pm Thursday, Friday and Saturday 9.30am-1pm

TEL: 01789 766611

1 PRIORY ROAD, ALCESTER B49 5DX

ALL REPAIRS ARE GUARANTEED FOR 12 MONTHS



# FIBRES SPORTS MASSAGE

At Fibres Sports Massage Therapy in Alcester, we're dedicated to helping you move better, recover faster, and perform at your best. With a background rooted in the demanding world of professional dance, our founder Stephen understands the importance of comprehensive body care—from prevention to recovery.



- Sports Massage
- Deep Tissue Massage
- Dry Cupping
- Dry Needling
- Taping
- Injury Rehabilitation
- Injury Management & Assessment



Tel: **07402885835**

E: [Info@fibressportsmassage.co.uk](mailto:Info@fibressportsmassage.co.uk)

[fibressportsmassage.co.uk](http://fibressportsmassage.co.uk)



## Being aware is first step

EARLY Diagnosis is key - that's the message from health leaders during Lung Cancer Awareness Month.

Lung cancer is one of the most common and serious types of cancer and more than 43,000 people are diagnosed with the condition every year in the UK.

The early it is diagnosed and treated, the better the changes of a full recovery.

Only one in four people in the two counties have their lung cancer diagnosed in the early stages of the disease.

There aren't always signs in the early stages of lung cancer, but many people with the condition can develop symptoms including a persistent cough of three weeks or more, coughing up blood, persistent breathlessness, unexplained tiredness and weight loss and an ache or pain when breathing or coughing.

NHS Hereford and Worcester chief medical officer, Dr. Will Taylor, said: "A cough is a common symptom for many things, but when you have one that doesn't go away after three weeks or more, it could be a sign of cancer."

"It's likely nothing to be too worried about, but - if it does turn out to be cancer - the earlier it is diagnosed, the easier it is to treat. It's vital that you take action by contacting your GP practice."

"Similarly, if you are experiencing breathlessness, wheezing, unexpected weight loss, tiredness or coughing up blood, then you should see medical help too."

Visit [www.nhs.uk/conditions/lung-cancer/](http://www.nhs.uk/conditions/lung-cancer/) for more information.

# New look should help young career seekers

WORCESTERSHIRE interactive careers platform, Simply Careers, has been given a fresh new look, aiming to make it easier for local students to explore the world of work.

Simply Careers is a digital platform from Early Careers Worcestershire that has been developed for secondary school students alongside the Careers Enterprise company (CEC) and Worcestershire County Council's Skills and Employability service.

The site helps secondary school students discover career possibilities, taking them on an interactive 'journey' across Worcestershire.

Along their 'journey' they can unlock six district zones packed with detailed insight into key local industries, and through short quizzes, videos, questionnaires and fact-packs, students get to explore real-world job profiles, labour market information, as well as career tips from some of Worcestershire's biggest employers.

The site has been refreshed, ready for a new academic term, with more interactive elements, and even more local content.

Worcestershire County Councillor Alan Amos, cabinet member with responsibility for skills and business said: "The Simply Careers platform is a great digital tool for supporting careers



The site helps secondary school students discover career possibilities, taking them on an interactive 'journey' across Worcestershire.

education in schools.

"It outlines to students the full scope of careers opportunities out there in our county, giving them the push they need to explore what waiting for them once they complete their school life."

"I want to see them go on to be employed locally, supporting and enhancing our economic future, and this is an excellent tool to help them make informed decisions."

Early Careers Worcestershire is the county's dedicated primary

and secondary school careers programme.

Working with the CEC they help schools deliver quality careers education and to develop and strengthen links with local employers.

Matt Tope, Early Careers Worcestershire Programme Manager added: "We're really proud of Simply Careers and the support, insight, and opportunities it offers Worcestershire schools and their students."

"As a digital tool it is easy for

schools to access and implement into their curriculum and helps them to achieve some of their legislative requirements.

"With an emphasis in the coming year on students having work experience across the whole of their secondary school life, Simply Careers gives them access to all the information they need to take their future steps."

To view the platform visit [www.simplycareers.co.uk](http://www.simplycareers.co.uk) or and email [cec@worcestershire.gov.uk](mailto:cec@worcestershire.gov.uk) for more information.



## The Will Partners

Over 30 years' experience in the Will writing business



SME UK Legal Awards 2025

10% discount with this advert

Wills, Trusts & Power of Attorney

OR

Free review of your existing Will

- Protect your home and everything that you have worked hard for...
- Friendly, experienced and genuine local people
- Free Home Visits

Call us Today

01527 877313

Email: [hello@thewillpartners.co.uk](mailto:hello@thewillpartners.co.uk)  
[www.thewillpartners.co.uk](http://www.thewillpartners.co.uk)

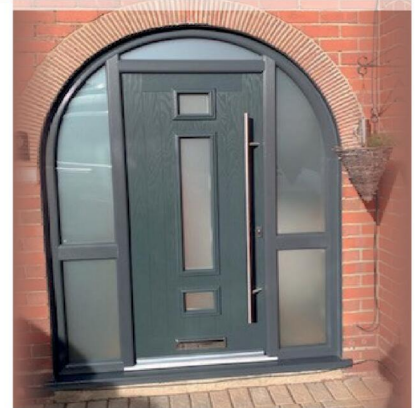


## BIRMINGHAM GLASS SERVICES LTD



**FAMILY  
RUN  
BUSINESS**

**EXPERTISE  
BUILT OVER  
DECADES**



### WE MANUFACTURE & INSTALL

- Flush Casement Windows **\*NEW\***
- Composite doors
- **Windows:** UPVC casement, bow, bay & shaped
- **Doors:** UPVC sliding, French, bi-fold, patio, aluminium
- Secondary and triple glazing
- Conservatories and bespoke orangeries
- Soffits, fascias and guttering
- Skypods and roof lanterns
- Aluminium windows and doors

### WE ALSO PROVIDE A FULL GLAZING SERVICE!

- ✓ Replacements of broken or misted units
- ✓ Window & door repairs
- ✓ Mirrors & glass cut to size
- ✓ In-house trade counter

**CALL TODAY FOR A FREE QUOTATION**  
**TEL: 0121 4779799**

[www.birminghamglass.co.uk](http://www.birminghamglass.co.uk) | [enquiries@birminghamglass.co.uk](mailto:enquiries@birminghamglass.co.uk)

# SUDOKU

Complete the grid so that every row, every column and every 3 x 3 box contains every digit from 1 to 9.

## EASY

		6			4			3
	7	8		1		6		
2	3						7	8
6				9	1	4		7
	1	2		3			6	
		5	4	8				1
8	4				7		3	6
	2	7		5			1	
			9			7		2

## HARD

	9		8	5	4			1
5								2
		1					5	
		5	1	8	7	3		
		2	9	6	5	4		
		6					7	
1								9
	2		7	4	8			6

# PATHFINDER

Beginning with the top highlighted letter, follow a continuous path of words associated with the given subject. The trail goes through each letter once, twisting up, down and sideways, but never diagonally.

### Madonna songs

**L** E A R A F L C A N E E G U E  
 I K P E Y O I I R P I V O V Y  
 Y A R F I H G M E R I E B O D  
 E R A N L T T A H L G R Y A M  
 M A C O R E H Y O L L R E T H  
 E R I F G W E A D I A I R I S  
 Y B D O O P E H A N T E H C  
 E B I N N G U V O N O T E L E  
 D E G R U H P B O K D Y K L M  
 T I R E S E M E R Y P A N D R  
 I V A E C U E A G E H T N A E  
 M E I K A E R U T I T O I Y H  
 T S L P C H P T N F U G E O T  
 O F R M U J A P O S L N R N A  
 R Y O Z E N P A D T R A D I E

Solutions opposite

# CROSSWORD

1		2		3	4		5		6		7
				8							
9							10				
11											
											12
13		14				15					
					16						
	17								18		
19											
20					21						
22									23		

## ACROSS

- Pass (2,2)
- Wasteful (8)
- Send away (7)
- Well up (5)
- After death (12)
- Make attractive (6)
- Get away (6)
- Despicable (12)
- The sea (5)
- Dryness (7)
- More stable (8)
- Remain (4)

## DOWN

- Good journey! (8)
- Foundation (5)
- Summary (6)
- Essay (12)
- Biggest ape (7)
- Sediment (4)
- Depressed (12)
- Of late (8)
- See (7)
- Smear (6)
- Wide bay (5)
- Fling (4)

Scribble pad

# LADDER

Using the clues provided, fill in each step of the ladder with a new word, changing one letter at a time.

- Scorch
- Delivered
- Dig a hole
- Uncovered
- Dog's noise



# NINER

Each number from 1 to 9 represents a different letter. Solve the clues and insert the letters in the appropriate squares to discover a word which uses all nine letters.

- 793257** gives a bad person;
- 341163** gives a second bad person;
- 798445** gives a business person.

1	2	3	4	5	6	7	8	9
---	---	---	---	---	---	---	---	---

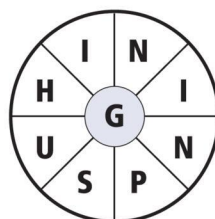
# CODEWORD

This puzzle has no clues. Instead, every number printed in the grid represents a letter, with the same number always representing the same letter. For example, if 8 turns out to be a V, you can write in V wherever a square contains 8. Using your knowledge of words, complete the puzzle.

	7	16	8	4		13	1	14	17	2	26	5	6	
A														
B	1		12			16		4			16		4	
C														
D	6		1	4	8	16	25	12	5		8		16	
E														
F	24	18	26				16			2	12	1	8	
G														
H	26		6			12	22	14	11			26	12	
I														
J		7	1	18	22		7		9	1	16	15	19	
K														
L						5		4		16				
M														
N	11	12	13	5	4		5		20	12	7	21		
O														
P	26		14				10	4	1	16		1	23	
Q														
R	1	16	11	4				11			12	A	L	5
S														
T	12		3			8	6	11	26	4	1	6		18
U														
V	19		18			12			1		16			19
W														
X	9	1	4	12	1	14	5	6			11	19	18	17
Y														
Z														

# WORDWHEEL

You have 10 mins to find as many words as possible using the letters in the wheel. Each must use the hub letter and at least 3 others. Letters may be used only once. You cannot use plurals, foreign words or proper nouns. There is at least one 9-letter word to be found.

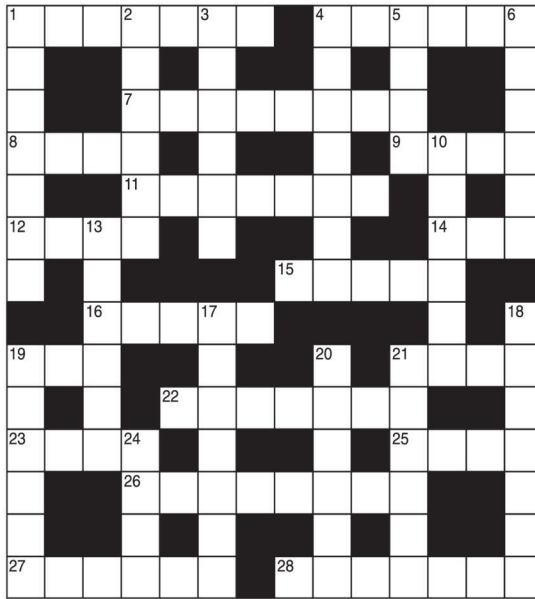


How you rate  
 8 words: average  
 12 words: good  
 16 words: very good  
 20 or more: excellent.

# GENERAL KNOWLEDGE CROSSWORD

## ACROSS

- 1 A coarse, weedy plant with heart-shaped leaves and tiny purple flowers surrounded by hooked bristles (7)
- 4 A member of the second order of angels (6)
- 7 Holiday resort on the north-west coast of the Isle of Wight (8)
- 8 and 6 Children's story writer who created Noddy (4,6)
- 9 A kiln for drying hops (4)
- 11 Town at the centre of a vale famous for market gardens and orchards (7)
- 12 King who succeeded his brother Richard I (4)
- 14 A person's relatives, collectively (3)
- 15 The fourth letter of the Greek alphabet (5)
- 16 A dessert of fruit and ice-cream (5)
- 19 A point replayed in tennis (3)
- 21 A group of islands in the Pacific, capital Suva (4)
- 22 Self-propelled weapon named from a fish whose electric discharges can cause numbness (7)
- 23 The Roman god of war (4)
- 25 A lump in yarn or fabric, often made intentionally to give a knobbly effect (4)
- 26 The official country residence of the Prime Minister (8)
- 27 A large kind of wasp with a severe sting (6)
- 28 French composer whose works include the Symphonie fantastique (7)



## DOWN

- 1 A small African breed of dog without the ability to bark (7)
- 2 English poet, dramatist and critic whose works include the tragedy All For Love (6)
- 3 Bizet opera in which the heroine works in a cigarette factory (6)
- 4 A vigorous campaign in favour of a cause (7)
- 5 A nymph who pined away until only her voice remained, in Greek mythology (4)
- 6 See 8
- 10 Any of a class of substances that neutralise acids (6)
- 13 A son of King Priam of Troy who was killed by Achilles (6)
- 17 "The lady doth --- too much, methinks" (Hamlet) (7)
- 18 A collective agricultural settlement in Israel, owned and administered communally (7)
- 19 The father of Noah (6)
- 20 The Greek goddess of the moon (6)
- 21 The remains or impression of a plant or animal hardened in rock (6)
- 24 Of a line of verse, to be metrically correct (4)

# SOLUTIONS

ACROSS: 1 Burdock; 4 Cherub; 7 Yarmouth; 8 Enid; 9 Oast; 11 Evesham; 12 John. 14 Km; 15 Delta; 16 Coupe; 19 Let; 21 Fiji; 22 Torpedo; 23 Mars; 25 Slub; 26 Chequers; 27 Homer; 28 Berioz. DOWN: 1 Basenji; 2 Dryden; 3 Carmen; 4 Crusade; 5 Echo; 6 Byron; 10 Alkali; 13 Hector; 17 Protest; 18 Kibbutz; 19 Lamech; 20 Selene; 21 Fossil; 24 Scan.

**General Knowledge Crossword**  
 ACROSS: 1 Go by; 3 Prodigal; 9 Dismiss; 10 Surge; 11 Posthously; 13 Ender; 15 Escape; 17 Contemporary; 20 Ocean; 21 Drought; 22 Steadier; 23 Stay. DOWN: 1 Godspeed; 2 Basti; 4 Resume; 5 Disquisition; 6 Gonilla; 7 Lees; 8 Dishhearted; 12 Recently; 14 Diocese; 16 Smudge; 18 Bight; 19 Toss.

**Crossword**  
 Like a Player, American Life, Day of Light, The Power of Goodbye, Bedtime Story, Frozen, Papa, Don't Preach, Jump, Like a Virgin, Rescue Me, Hung Up, Beautiful Stranger, Die Another Day, Into the Groove, Hanky Panky, Don't Tell Me, Chesh, Material Girl, BARONETCY

**Niner**  
 Holiday, American Pie, Everybody, Vogue.

**Wordwheel Pathfinder**  
 1=R, 2=H, 3=Q, 4=E, 5=L, 6=Y, 7=C, 8=M, 9=D, 10=W, 11=S, 12=A, 13=B, 14=L, 15=W, 16=O, 17=G, 18=U, 19=N, 20=A, 21=J, 22=X, 23=F, 24=P, 25=Y, 26=T

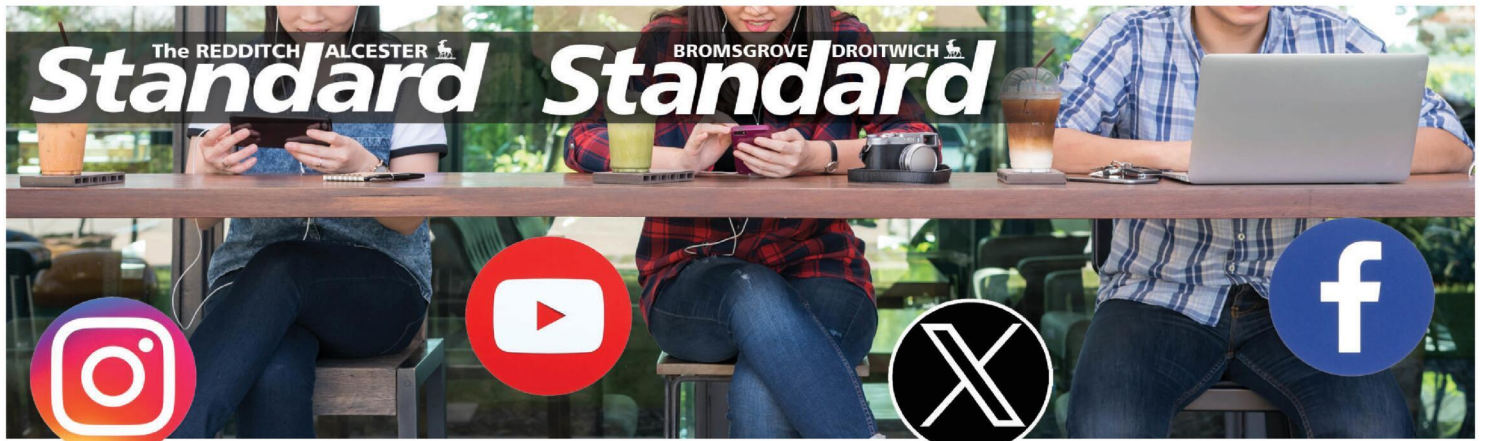
**Ladder**  
 Turn, Burn, Bore, Bare; Bark, Back.

**Codeword**

3	2	9	7	4	8	1	6	5	
1	7	8	5	3	6	2	4	9	
4	5	6	2	1	9	7	8	3	
8	3	2	9	6	5	4	7	1	
6	1	7	4	2	3	9	5	8	
9	4	5	1	8	7	3	2	6	
7	8	1	6	9	2	2	5	3	4
5	6	4	3	7	1	8	9	2	
2	9	3	8	5	4	6	1	7	

5	6	1	9	4	3	7	8	2
3	2	7	6	5	8	9	1	4
8	4	9	1	2	7	5	3	6
7	9	5	4	8	6	3	2	1
4	1	2	7	3	5	8	6	9
6	8	3	2	9	1	4	5	7
2	3	4	5	6	9	1	7	8
9	7	8	3	1	2	6	4	5
1	5	6	8	7	4	2	9	3

Hard  
 Easy  
**Sudoku**



**It's time to Like, Follow & Subscribe**

**Don't be LEFT BEHIND.....**

**BREAKING NEWS**

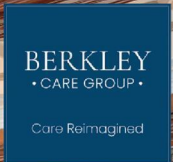
**WHAT'S ON**

**SPORT**

**INTERVIEWS**

- RedditchStandard
- TheRedditchStandard
- @RedStand
- TheRedditchStandard2
- bromsgrovestandard
- Bromsgrove Standard
- @BromStand
- TheBromsgroveStandard

# WELCOME TO *luxury living* at The Burcots



Set in five acres of landscaped gardens, Burcot offers exceptional care in a setting residents describe as “like a really, really good hotel.”

With two distinctive homes – historic Burcot Grange and the purpose-built Lodge, residents enjoy the little luxuries of life, from pampering salon visits to leisurely afternoon outings.



## ■ PLANNING FOR CARE WITH CONFIDENCE

Join us by the fireside for an evening of friendly advice and conversation.



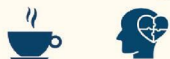
Peter Moore from JPA Financial will be sharing valuable insights on planning for the future. Enjoy coffee, tea, and delicious cake as we chat in a relaxed setting on Wednesday, 12<sup>th</sup> November, 6.30pm start at Burcot Grange. Take the first step toward a brighter future—your journey starts here!

## ■ FIRST THURSDAY of every month: *Singing for health*



An afternoon of singing which takes place in our beautiful conservatory. First Thursday of the month, arrival from 3pm at The Grange.

## ■ Meet & greet Mondays for those *living with dementia*



Join us on the last Monday for an afternoon of singing, dancing and drinks. Everyone is welcome, arrival from 2pm at The Lodge.

Find out more about our amazing care home and what luxury living really looks like.

Telephone Kiran on 0121 445 5552 or visit [www.burcotgrange.co.uk](http://www.burcotgrange.co.uk)



**BURCOT GRANGE & LODGE**  
• PART OF THE BERKLEY CARE GROUP •

# Motoring

www.carfinder247.co.uk

TELEPHONE 01527 588688 FACSIMILE 01527 584371

**THE Omoda 7, a mid-size, five-seat SUV, is confirmed as the latest addition to Omoda UK's line-up.**

Available in two trim levels and two engine specifications, the Omoda 7 will be on sale from January 2026 through Omoda&Jaecoo's nationwide dealer network.

Buyers can choose between two proven powertrains from parent company Chery International, each paired with generous specification grades, named Knight and Noble.

The base Knight trim offers premium technologies within a strong value proposition, including a heated eco leather steering wheel, dual-zone air-conditioning, a six-speaker Sony audio system, cooled 50W wireless smartphone connection and 19-inch

alloy wheels.

Inside, the cabin delivers exceptional quality and comfort, easily accommodating five adults.

The Noble trim takes luxury further, adding a 12-speaker Sony system, six-way electric adjustment for driver and front passenger, heated and ventilated gaming-inspired seats, power tailgate, a 1.45m panoramic sunroof and 20-inch alloy wheels. It also introduces an air-conditioning fragrance system and four-zone voice control – firsts for any UK-delivered Omoda.

The Omoda 7 will be offered as a fast-charging plug-in hybrid, featuring Omoda&Jaecoo's proprietary Super Hybrid System (SHS), which combines an 18.3 kWh battery with a 1.5-litre engine.

Self-charging ensures it never runs flat, offering a WLTP range of over 700 miles – including 56 miles in EV-only mode – and producing 204 PS and 275 Nm of torque, sprinting from 0-62 mph in just 8.4 seconds, with a top speed of 112 mph.

Omoda UK will also offer UK



Iced Moonstone – the Omoda 7 combines premium design with practicality, offering three ISOFIX points and a 639-litre boot.

The Omoda 7 will go on sale from January 2026 through Omoda&Jaecoo's UK-wide dealer network.

## USED CARS WANTED TOP PRICES PAID!

Older cars considered.

We can visit you and pay on the spot.

**ALAN REED CARS (1976) LTD**  
**07831 245 313**

## Latest edition

customers the option of a 1.6-litre TGD1 petrol engine that delivers 147 PS and 275 Nm of torque, sprinting from 0-62 mph in 10.4 seconds with a top speed of 118 mph.

The Omoda 7 embodies the brand's "Art in Motion" and new "O-Universe" design philosophy, uniting sculpted aerodynamic lines with a poised, road-ready presence. At the front, a borderless dia-

mond-pattern grille anchors the X-shaped design, flanked by slim follow-me-home LED Matrix headlights that create a piercing, high-tech look. At the rear, it features "O-Universe" lightning bolt-shaped rear lights, as seen on the recently launched Omoda 4.

Available in five exterior colours – Selenite White, Obsidian Black, Chromite Silver, Larimar Green and

## WANTED ALL USED CARS

*We pay more for low miles, low owner & full service history*

Please call Dominic

**07581 566064**

Hagley Cars

*Est. 40 years*

## ALAN REED CARS (Est 1976) Wheelchair Access Vehicles



**2020 Bronze Peugeot Rifter 1.5 Diesel Manual**, 18,000 Miles, 1 Owner From New, Full Service History .....£12,995



**2022 Blue. Peugeot Rifter Diesel 1.5 Manual**, 8,633 Miles Only .....£13,995



**2018 Blue. Ford Grand Tourneo 1.5 Diesel Manual**, 38,000 Miles, Full Service History .....£11,995



**2019 Black. Ford Grand Tourneo 1.5 Diesel Manual**, 29,000 Miles, Full Service History .....£11,995

**Wychbold Garage, Worcester Road, Wychbold, Droitwich, WR9 7PE**  
**07702 798 453**

9am-6pm Mon-Fri. 9am-4pm Sat  
Please Ring For Appointment To View

## Martin Floyd Motor Services

*45 years experience locally*

- All Aspects of Motor Servicing
- Repairs • Diagnostics
- MOTs @£50 (plus a free retest)
- Brakes • Clutches • Cam Belts

## SAFE DRIVING THIS AUTUMN

**Competitive Prices**

“...and a few comments from very satisfied customers:  
**Such Helpful and Friendly service...**  
Kate and Martin were really accommodating in working around my work commitments  
**Polite and fast service, and... good price**  
Will return and recommend to friends - Thanks”

## Martin Floyd Motor Services



**Units 4 & 5, Woodrow Farm, Woodrow Lane, Catshill, Bromsgrove, B61 0PL**



**TO BOOK CALL 0121 453 7667**



Learn from yesterday,  
live for today,  
hope for tomorrow.  
Anonymous

# Family Notices

Tel: 01527 588688 Email: reception@bullivantmedia.com

### BIRTHDAYS

## Mark Thomas



**15th November 2025**

Today we celebrate not just the years you've lived, but the love, wisdom, and laughter you've shared with everyone around you.

You've taught us what it means to work hard, care deeply, and live fully.

Sixty years of memories, milestones, and moments that make you the incredible person you are and we're so proud to call you Dad.

Here's to good health, endless happiness, and many more adventures ahead.

We love you more than words can say!

**Happy 60th Birthday**

To the best Husband, Dad & Grambo!  
With love from Jo, Laura, Alex, Harry, Ella, Archie, Lucy, Tom, Paul, Ben, Holly & Norman xxx

### BIRTHDAYS



## Mark Thomas

A loving Son, Brother and Uncle.

Wishing you a very

**Happy 60th Birthday**

Lots of Love

Mum, Si, Ben, Ceri  
and the rest of the Thomas Family

### BIRTHDAYS

## Mark Thomas

is

# 60!

Wishing you a wonderful Birthday Mark

Love from everyone at Thomas Brothers

If you have a message for a loved one  
Call our team on  
**01527 588688**



### IN MEMORIAM

## HALL Muriel

17.11.2007

Always in our thoughts.  
Deeply missed.

Love

Stephen and Family

### IN MEMORIAM

## In Memory of Squadron Leader John Merthyn Jones

In the RAF in the 2nd World War.  
Brother of my Step Grandad, the late Evan Jones.

Love Jennifer

### DEATHS

## Our Col

Passed away peacefully on Sunday 2nd November, 2025 surrounded by his loving family.

Col will be severely missed by all who knew him.

A celebration of Col's life will take place at Redditch Crematorium on Tuesday 2nd December 2025 at 11am.

No black attire, casual clothing preferred, but if you have a rock T-shirt even better! Family flowers only please.

You are all welcome to join the family for refreshments following the service at: Lodge Park Social Club, Lodge Pool Drive, Redditch, B98 7LH.

Donations may be made in Col's memory to Cancer Research UK and MIND; or alternatively via

Thomas Brothers  
The Funeral Directors  
494 Evesham Road  
Redditch  
B97 5JF  
01527 547777  
Thank you

### FUNERAL DIRECTORS

## Huntleys Funeral Services

Over 140 years of service to families in Redditch

Basic funeral £2,450\* (excl. third party fees).  
A funeral service for your loved one that's at an affordable price, but without any compromise on the care we provide.

**01527 906 553**

58 Ipsley Street, Smallwood B98 7AE

Call us 24 hours a day for support, help and advice, or to find out more about our prepaid funeral plans.

\* Limited choice of date and time for service and committal, excluding cremation fees. Terms and conditions apply - please ask us for details.

www.huntleysfunerals.co.uk

### MEMORIAL SERVICES

## As Time Goes By

YOUR LOCAL FAMILY RUN MEMORIAL SUPPLIER

Headstones, Cremation Tablets, Additional Inscriptions and Renovation Work

Web: [www.astimegoesby.org.uk](http://www.astimegoesby.org.uk)  
Email: [kfporter@blueyonder.co.uk](mailto:kfporter@blueyonder.co.uk)

**Please call 01527 550505**

To arrange a home visit or to find out our opening times

Unit 5, Dunlop Road, Hunt End Industrial Estate  
Redditch B97 5XP

"MEMORIALS THAT REFLECT A LIFETIME"

### FUNERAL DIRECTORS

**James Giles and Sons Ltd**  
Est. 1918

The Complete Funeral Directors

Allow our family to care for your family

[www.jamesgilesandsonsltd.co.uk](http://www.jamesgilesandsonsltd.co.uk)

<b>BROMSGROVE</b> 01527 872318	<b>DROITWICH</b> 01905 783188	<b>STUDLEY</b> 01527 852213	PRE-PAID FUNERAL PLANS AVAILABLE
-----------------------------------	----------------------------------	--------------------------------	----------------------------------

### FUNERAL DIRECTORS

*An Independent Family Owned Funeral Directors*

**THOMAS BROTHERS**

Family owned funeral homes in Redditch, Wythall, Alvechurch, Bromsgrove & Alcester.  
We provide a friendly, dignified service paying special attention to detail.

**REDDITCH • BROMSGROVE**  
01527 547777 01527 831700

**WYTHALL • ALVECHURCH • ALCESTER**  
01564 822001 0121 445 3422 01789 330939

"A family concern"

[www.thomasbrothers.co.uk](http://www.thomasbrothers.co.uk)  
email: [admin@thomasbrothers.co.uk](mailto:admin@thomasbrothers.co.uk)

### FLORAL TRIBUTES

**TNS**  
THE NURSERY SHOP

519 Evesham Road, Crabbs Cross, Redditch, B97 5JP

Bespoke funeral flowers personally designed for your loved one

[flowers@nurseryshopredditch.co.uk](mailto:flowers@nurseryshopredditch.co.uk)  
[www.nurseryshopredditch.co.uk](http://www.nurseryshopredditch.co.uk)

**Tel: 01527 550 700**



Learn from yesterday,  
live for today,  
hope for tomorrow.  
Anonymous



# Family Notices

Tel: 01527 588688 Email: reception@bullivantmedia.com

## FUNERAL DIRECTORS



### Say goodbye your way

Reassure your loved ones that your funeral is the one you wanted — not the one they hoped you wanted. Choose from a fully prepaid plan or simply record your wishes with no upfront payment.

Arrange an appointment today

**0121 459 9111**

Offices in Northfield, Cotteridge and Rubery



Professionally qualified independent funeral directors  
For more information, visit [mortonsfunerals.co.uk](http://mortonsfunerals.co.uk)



## FUNERAL DIRECTORS

### R.L. Rea Funeral Directors Ltd



Create the perfect Funeral for your loved one

R L Rea Funeral Directors Ltd  
Complete Funeral Directors and Memorial Masons



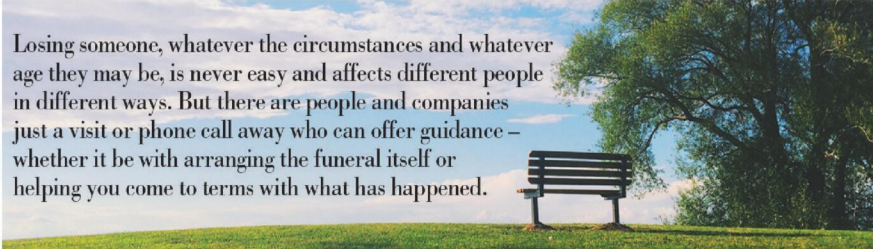
- \* Independent Funeral Directors in Bromsgrove, established in 1967
- \* 24 Hour Personal Service
- \* Private Chapel of Rest
- \* Pre-arranged Funeral Plan with Perfect Choice.
- \* We offer a Professional, Friendly and Caring Service.

[www.rlreafuneraldirectorsltd.co.uk](http://www.rlreafuneraldirectorsltd.co.uk)

**T: 01527 831723**

[info@rlreafuneraldirectorsltd.co.uk](mailto:info@rlreafuneraldirectorsltd.co.uk)

17 Rock Hill, Bromsgrove, Worcs B61 7LL

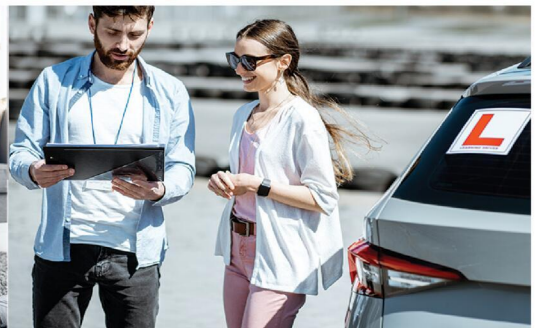


Losing someone, whatever the circumstances and whatever age they may be, is never easy and affects different people in different ways. But there are people and companies just a visit or phone call away who can offer guidance – whether it be with arranging the funeral itself or helping you come to terms with what has happened.



Whatever the occasion, why not send your loved ones a message....

Call our team on **01527 588688**



# Appointments

www.careerfinder247.co.uk

TELEPHONE 01527 588688 FACSIMILE 01527 584371



www.taurustaxis.co.uk

**Are you Looking To Top Up Your Salary or Pension?**

Then we could Help !!

## DRIVERS REQUIRED

With or without Taxi Badge / Vehicle  
Clean Licence Essential

**Holiday pay will be accrued and paid**

We also require  
**PSV DRIVERS**

with valid CPC card & training, part time hours,  
very good rates of pay.

**For Further Details Please Call  
07773 022 239**



## DRIVERS

Full and part time drivers required for home to school contracted transport. Competitive rates of pay and flexible working hours.

Company vehicle provided, and full assistance obtaining your private hire licence will be given.

For further details please call

**01527 60000**

or email [accounts@a2b60k.co.uk](mailto:accounts@a2b60k.co.uk)



**DROITWICH SPA HIGH SCHOOL AND SIXTH FORM CENTRE**

*Life. Changing. Learning.*

### Cover Supervisor

Required from: ASAP  
Scale: Band 7  
Salary: £23,025 (£29,975 FTE) per annum  
Contract: term time only usually worked at the rate of 32.5 per week during published plus inset days.

Closing Date: 1 December 2025 (9AM)

Interview Dates: TBC

This vacancy is a rolling vacancy and applications will be reviewed as they are received. Interviews and appointments may take place prior to the closing date shown.

#### About Our School

We are a happy and successful High School with a Sixth Form. We serve the whole community of Droitwich and its surrounding villages, making our intake socio-economically diverse, which our entire staff play up to and thrive upon.

You are strongly encouraged to read our 'Information for Prospective Colleagues.' We expect that it will give you an even deeper feel for the community we serve, our ethos, our culture and what our school is like day to day.

#### About the Vacancy

Are you someone who loves working with young people and wants to make a difference in their school experience? We are looking for a dedicated individual to join our Cover Team. Whilst experience is preferred, it is not essential as we want to find the right person and will offer training to support development in this role.

As a Cover Supervisor you will supervise the classes of teachers who are unavailable for reasons including meetings, training, trips and short term illness. This is a key role in our school and we seek to appoint someone who is able to communicate, inspire and support our students to achieve their goals. A commitment to working collaboratively with colleagues and to continuous professional development should not be underestimated.

#### How to Apply

You will find a link to the job description, a person specification, information for prospective colleagues, an application form and further information on how to apply here:

<https://website.droitwichspahigh.worcs.sch.uk/index.php/school/join-us/job-vacancies/>

If you have any queries please don't hesitate to get in touch via [jobs@droitwichspahigh.worcs.sch.uk](mailto:jobs@droitwichspahigh.worcs.sch.uk)

Droitwich Spa High School is committed to safeguarding and promoting the welfare of children and young people and expects all staff and volunteers to share this commitment.

## LOOKING FOR A NEW JOB?



**Check out our recruitment ads in print and online!**

**Standard**

CoventryObserver.co.uk

**Observer**

**Observer**

MalvernObserver.co.uk

**Standard**

**Observer**

**Observer**

**Observer**

WorcesterObserver.co.uk

*We've got you covered!*

**Bullivantmedia**  
GROUP LIMITED

## Gold Crest

Require the following in the Redditch, Bromsgrove, Droitwich and Kidderminster areas

## Part Time Drivers

Transporting children to school.  
Vehicle provided.

- ALSO -

## Passenger Assistants

Part time hours with or without experience.

**Contact 07483 171666**

# Appointments

www.careerfinder247.co.uk

TELEPHONE 01527 588688 FACSIMILE 01527 584371



RESIDENTIAL CARE HOME

**NIGHT CARER**

**JOBS CLOSE RESIDENTIAL HOME, KNOWLE, SOLIHULL**

We require a Night Carer with NVQ2 qualification (however training is available).

3 x 12 hour shifts per week.

Salary: £12.45 to £12.72 (NVQ2) per hour.

Please telephone **01564 773499** for an application form and further information or email [care@jobsclose.org.uk](mailto:care@jobsclose.org.uk).

PROVISION OF HIGH-QUALITY ELDERLY CARE IN KNOWLE, SOLIHULL

**VACANCY TO FILL?**



No problem, Caroline or Kelly can help!

Give them a call on

01527

**588625**

01527

**588749**

caroline.birkenhead@bullivantmedia.com  
kelly.taylor@bullivantmedia.com



**DOIDGE Fastenings Ltd**

Doidge Fastenings LTD are seeking a

**Cold Forging Setter**

to join our manufacturing team.

Experience in Semi Tubular & Solid Rivet manufacturing.

Some basic knowledge required

Job type: Full time Mon to Friday  
39 hour week

Pay: from £30,000 per yr

Please apply today at [accounts@doidge.com](mailto:accounts@doidge.com) with your CV

# LOOKING FOR STAFF?



With our expansive coverage both in print and online we can help you with that!  
Give **Caroline** or **Kelly** a call to find out how.

**01527 588625** caroline.birkenhead@bullivantmedia.com  
**01527 588749** kelly.taylor@bullivantmedia.com

**Bullivantmedia**  
GROUP LIMITED

# Classified

www.directory247.co.uk

TELEPHONE 01527 588688 FACSIMILE 01527 584371

## PUBLIC NOTICES

### PUBLIC NOTICES

**BROMSGROVE DISTRICT COUNCIL & REDDITCH BOROUGH COUNCIL**

Advertisement Key CA = Conservation Area, FPS = Footpath Setting, LB = Listed Building, LBS = Listed Building Setting.

**25/01163/LBC** LB  
 Site: Lea End Hall, Ash Lane, Alvechurch, Worcestershire B48 7BD.  
 Proposal: Upgrading works to include; new windows, air source heat pump, rewiring, refurbishment of kitchen and bathrooms, restoration of the staircase, new external doors and internal wall insulation.

**25/01160/LBC** LB  
 Site: Blue Bird Welfare, Needlers Way, Hunnington, Halesowen, Worcestershire.  
 Proposal: Conversion of existing welfare/canteen building into 13no private dwellings.

**25/01164/FUL** CA LBS  
 Site: 7 Church Road, Belbroughton, Worcestershire DY9 9TE.  
 Proposal: Single storey rear extension and works to the front entrance pathway including the rebuilding of garden walls and the fitting of handrails.

**25/01055/LBC** LB  
 Site: The Old Barn, Harvington Road, Bromsgrove, Worcestershire B60 2BA.  
 Proposal: Limited layout alterations to the first floor and the addition of two conservation rooflights to the existing roof to the garden elevation.

**25/01120/FUL** CA  
 Site: 1 Brookwood Drive, Barnet Green, Worcestershire B45 8GG.  
 Proposal: Proposed ground floor side infill extension and loft conversion with rear dormer.

**25/00816/FUL** FPS  
 Site: Land At Wood Lane, Fairfield, Worcestershire.  
 Proposal: Construction of Dwelling to replace existing barn approved for residential.

Application forms and plans may be inspected online <https://publicaccess.bromsgrovedredditch.gov.uk/> online-applications/

Comments can be submitted online, via email to [newplan@bromsgrovedredditch.gov.uk](mailto:newplan@bromsgrovedredditch.gov.uk) or in writing Planning Services, Redditch Town Hall, Walter Stranz Square, Redditch, B98 8AH.

Comments should be made within 17 days of the date of this publication. The Council does not acknowledge comments but will make these available for inspection online.

### PUBLIC NOTICES

**BROMSGROVE DISTRICT COUNCIL & REDDITCH BOROUGH COUNCIL**

Advertisement Key LB = Listed Building.

**25/00970/LBC** LB  
 Site: Oak Tree Barn, 1 Shurnock Barns, The Saltway, Feckenham, Worcestershire B96 6JT.  
 Proposal: Replace rear patio doors.

Application forms and plans may be inspected online <https://publicaccess.bromsgrovedredditch.gov.uk/> online-applications/

Comments can be submitted online, via email to [newplan@bromsgrovedredditch.gov.uk](mailto:newplan@bromsgrovedredditch.gov.uk) or in writing Planning Services, Redditch Town Hall, Walter Stranz Square, Redditch, B98 8AH.

Comments should be made within 17 days of the date of this publication. The Council does not acknowledge comments but will make these available for inspection online.

### PUBLIC NOTICES

**Warwickshire County Council**

**ROAD TRAFFIC REGULATION ACT 1984**  
 Warwickshire County Council proposes to make the following Temporary Traffic Orders:

**ALCESTER ROAD, STUDLEY**  
 Order Effect: Road closed to vehicular traffic between Needle Close and Castle Road.  
 Reason for Order: To enable works to repair/replace a defective manhole cover and frame, overnight 20.00hrs - 06.00hrs.  
 Order Commences: 14 November 2025 for up to 18 months.  
 Anticipated Completion: 15 November 2025.  
 Access & Diversion: Alcester Road, Priory Square, Birmingham Road, Warwick Highway, Alcester Highway, Rough Hill Drive, Evesham Road, The Slough, Node Hill, Bromsgrove Road and vice versa.  
 Contractor: CSP, Tel: 07918 298 599.

For all of the above temporary orders, pedestrian access to and egress from properties and land situated adjacent to the length of road to be closed will be maintained at all times. Vehicular access will be maintained where possible.

To report any problems with these works or for further details of our current & planned roadworks visit our website [www.warwickshire.gov.uk/roadworksmap](http://www.warwickshire.gov.uk/roadworksmap) or call us 01926 412515.

S Duxbury, Director of Strategy, Planning & Governance, Shire Hall, Warwick CV34 4RL Date 14 Nov 2025

### PUBLIC NOTICES

**LYNDA MARGARET BALNAVES Deceased**  
 Pursuant to the Trustee Act 1925 anyone with a claim against or an interest in the Estate of the deceased, late of Droivitch Mews Care Home, Mulberry Tree Hill, Droivitch, Worcestershire, WR9 7SS, who died on 20/06/2025, must send written details to the address below by 15/01/2026, after which the Estate will be distributed with regard only to claims and interests notified.

James Hadley c/o Kingsguard Legal, The Manse, 33 New Road, Stourbridge, DY8 1PA. Ref: 10438

### PUBLIC NOTICES

**JOHN DAVID POTTS Deceased**  
 Pursuant to the Trustee Act 1925 anyone with a claim against or an interest in the Estate of the deceased, late of 98 Crabtree Lane, Bromsgrove, Worcestershire, B61 8PA, who died on 07/05/2025, must send written details to the address below by 15/01/2026, after which the Estate will be distributed with regard only to claims and interests notified.

James Hadley c/o Kingsguard Legal, The Manse, 33 New Road, Stourbridge, DY8 1PA. Ref: 10251

### PUBLIC NOTICES

**PATRICIA LOUISA MILLWARD (Deceased)**  
 Pursuant to the Trustee Act 1925 any persons having a claim against or an interest in the Estate of the above named, late of Flat 405, Lupton Court, 2 The Crescent, Bromsgrove, B60 2DE, who died on 18/12/2024, are required to send written particulars thereof to the undersigned on or before 15/01/2026, after which date the Estate will be distributed having regard only to the claims and interests of which they have had notice.

Perry Lee Millward, The London Gazette (53999), PO Box 3584, Norwich NR7 7WD

**PUBLIC NOTICES**

Keeping you up to date with all the latest information on Planning Proposals, Traffic Notices, Goods Vehicle Operator Licences, Licences To Sell Alcohol, Probate Notices.....

**PUBLIC NOTICES**

All your latest information on Planning Proposals, Traffic Notices, Goods Vehicle Operator Licences, Licences To Sell Alcohol and Probate Notices



### MISCELLANEOUS

**'Desperately Seeker' 'LAURA'**  
 Number Plate XL17 URA (Laura) £2000  
 Great investment or personal use  
 079631 43727

**RECLINER CHAIR**  
 electric rise & recline £169 Manual recline chair £60 High seated chair £40 Can deliver 07703 925662

**LegXercise Unit**  
 Passive Exercise Hardly used £30  
 07732 176241

**BEDS NEW Doubles**  
 £95 Singles £59 King size £159. Second hand doubles £49 Singles £29 Fridges £49 Freezers £59 Can deliver 07703 925662

**Large Chest**  
 Professionally made from MDF 39" L 19 1/2" W 18 1/2" D Strengthened £65 ono  
 07821 009490

**SUNAGOR 10 x 50**  
 200m binoculars case caps tripod bracket perfect condition £40 07938706175

**DURESTA large 2**  
 seated sofa on casters. Cream beige gold stripe with scroll arms. Very comfortable. Good clean condition. No smokers or pets. Has slight fault hidden by cushion, hence £100 07812 756409

**33" Panasonic TV £30**  
 07780511800

**TWO fan heaters two**  
 for £8 07780511800

**BASS electric guitar**  
 as new with Amplifier £80 ono 07780511800

**HAMSTER cage large Habitat 3**  
 with accessories £20 07790748013

**WHITE bathroom ladder radiator**  
 with wall fixings 400 x 1220 unused £20 07790748013

**KIDNEY shaped dressing table**  
 with curtains and stool. Beautiful condition. £75 07743929558

**NESCAFE Dolce Gusto**  
 Coffee machine with pods (used) £20 07743929558

### MISCELLANEOUS

**Flymo Easiglide 360v Electric Mower**  
 Bought Sept 2024 Used occasionally £75 ono  
 07821 009490

**TANAKA HEDGETRIMMER TCG 22 EAD**  
 Long reach Good condition Blade length 20" £125 ono  
 07821 009490

**CRYSTAL drinks decanter and 2**  
 whisky glasses. Glasses have never been used, excellent condition £12. Tel 01527 500217

**NEW Clarks Cica C-SHX Combo**  
 Black / White Suede Trainers Size 5F £18 01527853345

**FRIDGE £50 07780800**

### MISCELLANEOUS

**NEW Clarks Cica C-SHX Combo**  
 Black / White Suede Trainers Size 5F £18 01527853345

**CHRISTMAS Card Making Rubber**  
 Stamps Bundle, Card Stock, Positioner, LightBox + More £20 01527853345

**READERS Digest Creative Cooking & Entertaining**  
 Hardback Book 432 Pages, Including Christmas Recipes VGC £6 01527853345

**100% Luxury Wool Light Green Bedside Carpet Runner**  
 (whipped Edge Remnant) 162 x 65cm (64 x 25") £15 01527853345

**DELIA Smith Winter Collection Hardback**  
 Cookery Book - 150 Recipes For Winter. Excellent Condition £6 01527853345

**5 New Boots Botanics All Bright Glow Day**  
 Cream Moisturiser SPF15 Each 50ml £18 01527853345

### MISCELLANEOUS

**3 Heavy Duty Handmade Bird Boxes**  
 For Robin, Great Tit Etc £20 01527853345

**6 Airtight Glass Storage Jars 190g**  
 Douwe Egbert Empty Coffee Jars £6 01527853345

**WOMEN'S Quality Oakley Software**  
 Beige Quilted Outdoor / Ski Jacket Medium Excellent Condition £18 01527853345

**3 x 100% Wool Luxury Carpet Small**  
 Offcuts 31" x 24", 35" x 14" & 14 x 18" Light Green £10 01527853345

**MAMAS & papas, large retro style**  
 rocking horse on wooden frame (collection only) £65.00. Tel: 07934132759

**FIVE minton bellemeade salad plates**  
 (8") white, blue, very good clean condition. £5.00 for all. Tel: 07934132759

### MISCELLANEOUS

**FIVE minton bellemeade salad plates**  
 (8") blue flowers, bone china, very good clean condition. £5.00 for all. Tel: 07934132759

**CARPET OFFCUT - brand new, berber,**  
 hard wearing, felt backed, mid brown / cream mixture, no matching pattern so could cut & piece together. size 6 foot 8 inches long x 2 foot 1 inch wide. £3.00. Tel: 07934132759

**ROYAL Albert Old Country Rose Coffee Pot**  
 £15 collect & cash only 01527 540236

**ROYAL Albert Old Country Rose Coffee Pot**  
 £15 collect & cash only 01527 540236

**SUGAR bowls Royal Albert Country Rose**  
 £5 each or 3 for £12 collect & cash only 01527 540236

### WANTED

**\*\*WANTED: Vinyl Records CDs Cassettes**  
 Vintage or New \*\* Seeking classic rock, jazz, indie and rare finds. Cash paid £5 each or 3 for £12 Or 01527 893992 Or email: [welston@live.com](mailto:welston@live.com) Paul (Albatross & Doomed Records)

**SOMETHING TO SELL**

Advertise them in **The Observer** or **The Standard**

Simply fill in the coupon below, tick the appropriate box, enclose your cheque or credit card details if required, and we'll do the rest - Or alternatively email your free ad to: [freeads@bullivantmedia.com](mailto:freeads@bullivantmedia.com)

Free Lineage (Items upto value £500)  Paid for Boxed Ad (Items of any value)

Details of Item For Sale for Publication (No Pets or Livestock or Firearms please): (MAX 15 WORDS)

..... Tel: .....

Details (Not for Publication):  
 Mr/Mrs/Ms ..... Initials..... Surname .....

Address .....

..... Postcode .....

Tel: ..... Mobile .....

Email: .....

I enclose cheque, payable to Bullivant Media Group Ltd, value £.....  
 or alternatively  
 Please debit my card for £..... Visa/Mastercard/Maestro/Delta  
 Credit Card Number .....

Exp: ..... Start: .....

Sec No: (Last 3 digits) ..... Issue No. (if applicable) .....

Send to Bullivant Media Group Ltd, Webb House, Church Green East, Redditch, Worcestershire. B98 8BP or email your advertisement to [freeads@bullivantmedia.com](mailto:freeads@bullivantmedia.com)

**3 PIECE SUITE**  
 brown leather, perfect condition as new  
**£550**  
 can deliver  
 telephone 10234 567890

(£5.75 incVat example boxed advertisement)

# Classified

www.directory247.co.uk

TELEPHONE 01527 588688 FACSIMILE 01527 584371

## SERVICES

### BUILDERS

#### BRICKWORK H.Boot

All Types  
Garages  
Garden Walls  
Extensions  
Fully Qualified Tradesman  
Call  
**07778 705570**  
**07789 064138**  
WhatsApp Email: hanstheboot@hotmail.com

### CARPENTRY/ JOINERY



#### AJB CARPENTRY

EXCEPTIONAL SERVICE  
AND QUALITY WORKMANSHIP  
Covering: kitchen fitting, roofs, doors,  
stairs and much more to help with  
your carpentry based home  
improvements.  
Call today for your free quote!  
Call Ant on  
**07827 324754**  
f AJB Carpentry

### DECORATING & PAINTING

#### C&M Decorators

Father and Son • Interior and Exterior  
32 years experience • Fully Insured  
Tel **01527 576136**  
Mob **07850 380162**

### DECORATING & PAINTING

#### DA SMITH DECORATORS

Interior & exterior  
painting & decorating  
Property Repairs  
40 years experience

**07941 689 655 • 01527 836227**

### FENCING

#### FENCING & FENCE REPAIRS

All types undertaken  
20yrs exp.  
No JOB TOO SMALL  
Contact Daryl  
**01527 526990 • 07847 898079**  
For a free quote

### GARDENING SERVICES

#### JFS Garden Services

Fencing, Turfing, Hedge Cutting, Tree Surgery,  
Stump Grinding, Jungles Cleared,  
Grass Cutting/Regular Mowing,  
Domestic, Commercial enquiries welcome.  
For a free Competitive Quote  
**07977 497 440 • 01527 458 104**  
www.jfslandscapes.co.uk

### HAIRDRESSERS

#### Hair by Sharon

in the comfort of your own home  
Care Home Visits Available  
Over 20 years  
experience  
310A Birchfield Road,  
Webbeath,  
Worcestershire  
**07772994654**  
sharon\_campion@yahoo.com

### KITCHENS

#### S.W INSTALLATIONS

**Kitchens &  
Bathrooms**  
FREE DESIGN &  
QUOTATION

QUALITY KITCHENS  
& BATHROOMS  
SUPPLIED & FITTED  
PLUMBING,  
CARPENTRY, TILING,  
WORKTOP & DOOR  
REPLACEMENT

(Supply & fit, supply only or fit only)  
LOCAL TRADESMAN  
20YRS EXPERIENCE  
NO JOB TOO SMALL  
**01926 773386 or**  
**07971 684 353**

### LANDSCAPING

#### D.A. TAYLOR

**LANDSCAPING**  
Fencing • Slabbing • Conifers  
Hedge Work  
**CLEARANCE**  
Gardens • Rubbish • Sheds • Large  
& Small Trees Felled, Lopped and  
Shaped • Turfing • Shed Base  
**FREE QUOTATIONS**  
**01527 870914 - 0771 768 2816**

### PLASTERING

#### LCJ PLASTERING SERVICES

General Property  
Maintenance  
All Aspects of Plastering  
30 Years Exp  
Call Craig Berrows  
**0777 1875865**

### PLUMBING

#### SB 4 Plumbing & Heating

- Gas Fires
- Gas Cookers
- Gas Central Heating and Maintenance.
- Gas Appliance Landlord/home
- Safety Checks.
- Plumbing faults/installation.

Email: [stuart4heating@gmail.com](mailto:stuart4heating@gmail.com)  
[www.sb4plumbing.co.uk](http://www.sb4plumbing.co.uk)  
Call me for domestic work  
MOBILE  
**07951 485 329**

#### BEST LEAVE IT TO THE EXPERTS



Check out our  
**Classified pages!**

### REMOVALS/ STORAGE

#### MAN WITH A VAN REMOVALS

House moves local & long distance  
Collection and delivery  
Single items to full van loads  
House Clearances  
Collection of unwanted household items  
Waste Carrier No: CBDU69835  
T:01527 514 666 M:07843 854 289  
ManWithaVanRemovalsRedditch.co.uk

### ROOFING

#### WEATHER GUARD ROOFING PROFESSIONALS

**10% OFF  
ALL ROOFING  
REPAIRS** No job too big or  
too small  
Fully guaranteed  
and insured  
Written quotes  
available

Specialists in all types of Roofing,  
Complete Roofs, Ridge Tiles,  
Lead Work, Chimneys, Fascias,  
Soffits, Guttering, Gutter Cleaning  
Mobile: **07467 159012**  
Office: **01527 962 972**  
[info@weatherguardservices.co.uk](mailto:info@weatherguardservices.co.uk)  
[weatherguardservices.co.uk](http://weatherguardservices.co.uk)

#### ANNA'S ROOFING

- Tile & Slate Roofs
- Flat Roofs
- Roof Repairs
- Fascias
- Soffits & Guttering
- Chimney Work
- Pressure washing roofs to look like new

Based in Bently Heath, Soilhull  
**07900 686 746**  
**01564 651 033**

### SKIP HIRE

#### A&S SKIPS

A Division of A&S Developments (Redditch) LTD  
• 2, 4 & 7 yard skips  
• Skips with drop front doors guaranteed  
• Prompt and reliable service  
• Competitive rates  
Tel **01527 459 238 • Mob 07788 112028**  
www.asskips.co.uk  
Waste carrier No. CBDU 169 207

#### Redditch Skip Hire Ltd

For all your domestic and  
commercial skip requirements  
4-40 yard skips available • Drop fronts -  
please ask when ordering  
Open or enclosed 90% of waste recycled

• No room for a skip.  
Book our man with a van  
service  
• Prompt, reliable service  
• 2 hour arrival slot  
• Next day service  
Call **01527 63644**  
Or visit us at:  
[www.redditchskiphire.com](http://www.redditchskiphire.com)  
Waste Carrier No. CBDU122354

### TREE SURGEONS

#### TREE & LANDSCAPE Specialists

Tree & Landscape Specialists is a trusted, professional company with  
a great reputation to uphold and have over 20 years experience in the trade.  
• Tree Work • Paving • Fencing • Artificial Grass • Astro Turf • Patios  
No job is too big or too small • Fully Insured  
Contact us today FREEPHONE: 0800 747 1704 • LANDLINE: 01527 906 577  
[treeandlandscapespecialists@gmail.com](mailto:treeandlandscapespecialists@gmail.com)  
[www.treeandlandscapespecialists.co.uk](http://www.treeandlandscapespecialists.co.uk)  
PHOTO BY Google

#### POWELLS ROOFERS & BUILDING SERVICES

- Roof Tiling • Garage Roofs • Flat Roofs
- Chimneys rebuilt and re-pointed
- Garage Conversions • Driveways
- Building Maintenance • Extensions

Powells Roofing & Building Services are a local  
Redditch based company  
C&G Qualified with over 15 years local roofing and  
building services experience

For more details, please call  
**07952 797 973 or 01527 454325**

**Dragonfly GARDENING**  
Specialists in plant care and pruning  
*Your local expert plantsman*  
CRB CHECKED • FULLY INSURED  
07814 510797 | 01527 878965  
Reliable Friendly Service  
Garden Clearance Undertaken

# Standard SPORT



9 772040 128006  
Published by Bullivant Media Group Ltd, Webb House, Church Green East, Redditch, Worcestershire B98 8BP  
Printed by Newsquest, Newspaper House, Osney Mead, Oxford, Oxfordshire OX2 0EJ

**LANDMARK**  
LANDSCAPING & DRIVEWAYS  
FREEPHONE 0800 191 0282  
www.landmarkdriveways.co.uk  
Honey Orchard, Doverdale, Droitwich, WR9 0QB  
• Block Paving • Patio's • Slabbing • Driveways  
• Tarmacadam • Brickwork • Turfing • Graveling  
• Resin Bond • Paths • Forecourts • Fencing  
All Work Guaranteed for 5 Years - No Deposit Required  
ebark Checkatrade.co Google

www.droitwichstandard.co.uk/sport BRINGING YOU ALL THE LATEST SPORTS NEWS AND VIEWS FROM THE AREA

# Spa crash out of Senior Cup following Wychavon derby win

by Aaron Sutcliffe  
aaron.sutcliffe@bullivantmedia.com

**FOOTBALL: DROITWICH** Spa thrashed rivals Pershore Town 4-1 to claim the Wychavon derby bragging rights in the club's latest league outing.

Goals from Ben Tilbury, Perry Moss, James Lemon and substitute Josh Hurdman earned Spa a seventh straight home win in all competitions at the King George Playing Fields.

And the result means Droitwich sit second in the Hellenic League Premier Division table behind leaders Roman Glass St George on goal difference.

The game kicked-off following a Remembrance ceremony as players and supporters observed a two-minute silence.

Spa broke the deadlock on 17 minutes when Jack Davies jinked his way into the box and drew a foul from a Pershore defender.

And Tilbury duly sent the Pershore goalkeeper the wrong way from the penalty spot as the Saltmen took an early lead.

The visitors spurned a golden chance to draw level soon after as Calum Harper failed to beat Spa goalkeeper Dom Rogerson in a one-on-one situation.

And Droitwich doubled their lead on 21 minutes when Moss saw his effort parried into the net by Pershore stopper Joe Cunneen.

However, Pershore halved the deficit just two minutes later as Reece Day calmly found the bottom corner from Nigel Hinkulow's pass.

Hinkulow then suffered a serious injury on 34 minutes which saw the defender receive close to 50 minutes of treatment before he left the field on a stretcher.

After play resumed, Spa restored their two-goal cushion in first-half injury time as Lemon raced clear and finished past Cunneen following a flowing team move.

The Saltmen sealed the points on 74 minutes when Lemon's clever dummy allowed Hurdman to turn home Haydn Morris's low cross into the box.

However, Droitwich suffered a 3-0 home defeat against Worcester Raiders in midweek to exit the Worcestershire Senior Cup at the second round stage.

Goals from Manny Olaloko, Jordan Murphy and Adam Taylor condemned Spa to defeat at the King George Playing Fields.

Droitwich are next in action against Thornbury Town on Saturday, November 15 with kick-off at 3pm at the King George Playing Fields.

Ben Tilbury scores from the penalty spot against Pershore. Pictures by Mathew Mason.



James Lemon celebrates after scoring Spa's third goal against Pershore.



**Yokohama Authorised Tyre Dealer**



**JEFFERIES TYRES**  
Est 1988



TRADE TYRE PRICES TO THE PUBLIC

**OVER 3,000 NEW & PART USED TYRES IN STOCK**  
Serving Trade & Public for over 35 Years  
Alloy Refurbishment & Alloy Repair Service  
Hunter Alignment & Wheel Balancing Available

**01527 831829**  
Unit 4 - 22 Sherwood Road - Bromsgrove - B60 3DR



**EDWARDS CAR REPAIRS**

- Engine tuning
- MOT preparation and submission for final MOT
- Cam belt replacement
- Clutch Replacement
- General repairs
- Welding
- Servicing
- Insurance work welcome
- Supply and fit all parts for all makes & models

*All types of work undertaken, why not give us a call or just drop in*



Rear of 8 Hewell Road, Barnt Green, Birmingham, B45 8NE  
0121 445 5414  
Email - enquiries@edwardsrepair.co.uk