

DROITWICH Standard

TREE & LANDSCAPE Specialists

Contact us today
FREephone: 0800 747 1704
LANDLINE: 01905 886 566
treeandlandscapespecialists@gmail.com
www.treeandlandscapespecialists.co.uk

Friday, December 12th 2025 Week 50

[f droitwichstandard](https://www.facebook.com/droitwichstandard)

www.droitwichstandard.co.uk

[@DroitStand](https://twitter.com/DroitStand)

Your **FREE** edition - just pick one up and keep up with the news

LFW WINDOWS

WINDOWS DOORS CONSERVATORIES



Call us on 01905-28493 or 07986958554 (Lee Freeman)
lee@lffwindows.co.uk
 FENSA Registered Company.
 10 Year Insurance Backed Guarantee.

A life less ordinary: Mentor tells his story

by **Tristan Harris**
tristan.harris@bullivantmedia.com

A SALVATION Army stalwart who has helped young people who fell victim to addiction, had criminal records and got involved in gang culture, has written his life story.

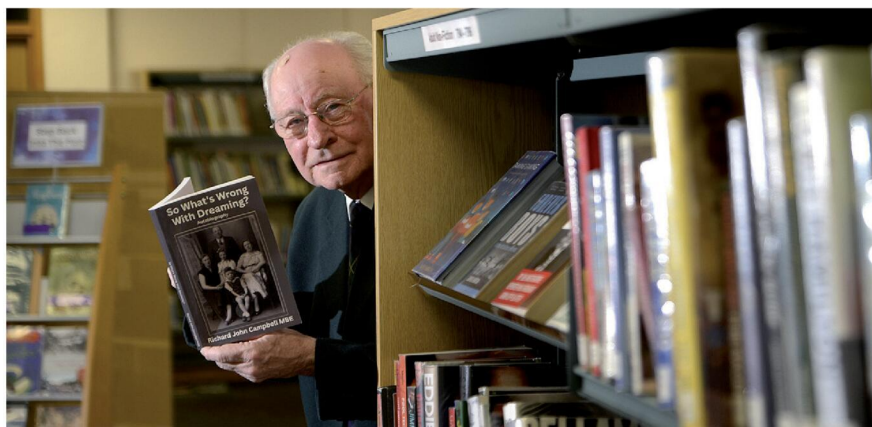
Richard John Campbell MBE will be launching *So What's Wrong With Dreaming?* at Droitwich Library from 10am to 2pm on Saturday, December 20.

Richard was born in Kidderminster on April 20, 1947, to a very poor, working class family in the Broad Street area. The neighbourhood was well known for poor housing and poverty.

Richard, 78, said: "I was ill prepared for school life, which I found harsh and difficult to cope with, although I can't remember missing many school days, so I did cope.

"My poor home life and the struggles with school made me determined I was going to break out of the traditional pattern of future expectations that existed in such circumstances."

Though he left school with no qualifications, Richard undertook an apprenticeship with a local building company and grasped all the advantages the opportunity offered.



Richard John Campbell MBE will launch his autobiography *So What's Wrong With Dreaming?* at Droitwich Library on Saturday, December 20. Picture by Marcus Mingins 4925009MMR

He made the most of the chances which came his way, kept the highest possible personal standards and learned as much as he could to build a life that would be worthwhile for him and those he would influence.

He added: "I discovered an ability to organise and persuade others to

join me in arranging many concerts and fundraising events for more than 50 years."

Those concerts benefited the Salvation Army and countless other charities.

Richard said: "Often, those I approached for support: brass bands,

choirs and many well-known TV personalities, were willing to help - most of them waved their fees."

Richard has been based in Kidderminster, Cradley Heath and now Droitwich Spa and has always found support and encouragement within those communities.

He changed career midway through his working life to start teaching. It was then he worked with young people to help them through issues.

"I had the amazing fulfillment of being able to turn many of these youngsters round, from the point of view of their lack of self-worth, and point them to a possible, more positive future. Many kept in touch long enough for me to see them successful in their own right."

Richard was asked to set up Midlands and national training centres by different contractors involved in major construction projects.

During this time, his charity work continued and, in the Queen's 2021 New Year's Honours list, was made an MBE for 50 years of service to the community in the West Midlands.

Several people, including an MP who was the deputy minister of education, at the time, encouraged him to write an account of his varied experiences.

Now it is complete, Richard hopes he can go on encouraging others through his book.

He added: "I am so grateful to so many who have given me their support over the years."

The book costs £10 per copy and can be pre-ordered for collection on the day of the book signing by calling Richard on 07387 308718.



Droitwich Mews
CARE HOME

Christmas Fair

Saturday 20 December | 2pm - 4.30pm

Celebrate the festive season with us at our Christmas Fair. Enjoy a wonderful selection of stalls, festive food and drinks, entertainment, games, and plenty of seasonal cheer. It's the perfect chance to come together, meet the team, and share in the holiday spirit with our residents and community.

01905 934182 averyhealthcare.co.uk

Mulberry Tree Hill | Droitwich Spa | Worcestershire | WR9 7SS

SUPERVALUE FURNITURE & BED CENTRE!
YOUR LOCAL DROITWICH INDEPENDENT TRADER

QUALITY BRANDS FOR LESS



FREE UPGRADE

Celebrity

DUAL MOTOR / CLOUD ZERO RISER RECLINERS AVAILABLE IN 3 SIZES



ADJUST-A-BED

20% EXEMPTION FOR THOSE WITH QUALIFYING CONDITIONS



HYPNOS

AUTUMN SALE
FREE DELIVERY FOR THE PRICE OF A DOUBLE

LARGE RANGE OF MODELS IN STORE

SEE OUR MAIN ADVERT ON PAGES 10 & 11

For all the latest news and features: bromsgrovestandard.co.uk and droitwichstandard.co.uk

The dancers raised more than £500 in their Tapathon at Inkberrow Village Hall.

Picture by Helena Jane Classes and Coaching ©.



Donation to back brigade trio's project

THE BOYS' and Girls' Brigade group in Redditch has received a cash boost to aid participation in a conservation project in South Africa.

The 1st Redditch Boys' and Girls' Brigade received a £5,000 donation from Persimmon Homes developer as part of its Community Champions scheme.

Founded in Redditch in September 1960, the group provides weekly activities for boys and girls between the ages of four to 18.

The brigade has three members taking part in the conservation project as part of their Duke of Edinburgh Award. As part of this project, the trio will be involved in tracking and monitoring wildlife, completing game counts and wildlife surveys, tree planting and erosion control, clearing non-native vegetation from the reserve and volunteering at local school community projects and feeding schemes.

Paul Gration, at 1st Redditch Boys' and Girls' Brigade, said: "We're absolutely delighted by this kind donation from Persimmon Homes."

"Our goal has always been to provide positive experiences for young people and these funds will ensure our three members are able to participate in this really important Conservation project in South Africa."

Clare Bright, Persimmon Homes South Midlands' sales director, added: "What we do is about much more than just building homes – it's about leaving a lasting positive legacy in the communities we build in."

"We're always delighted to lend a hand to local groups to boost their ongoing initiatives or contribute to causes that mean a lot to them."

"It's great to be able to provide 1st Redditch Boys and Girls Brigade with this donation which will help their members take part in a vital project and provide them with some fantastic life experiences."



Paul and Tracey Gration with members of 1st Redditch Boys' and Girls' Brigade and Clare Bright from Persimmon Homes. s

Dancers in step to join charity Tapathon

TAP dancers from across Worcestershire raised more than £500 for BBC Children in Need by taking part in a nationwide 'Tapathon' event.

The dancers, who all attend adults tap dance classes at Helena Jane Classes and Coaching, danced a routine to Tina Turner's Nutbush City

Limits at the same time as other tap dance groups across the UK.

The event was held at Inkberrow Village Hall and 25 dancers took part, ranging in age from 39 to 89. Across the UK, around 7,000 dancers participated in the Tapathon on the same day.

Dance teacher and organ-

iser Helena Mitchell said: "The Tapathon was a great opportunity for dancers from our classes to get together and wonderful to know we were dancing at the same time as groups all over the country, raising funds to help an important cause."

The group generated a total of £570.

Ey International
 Brass Band **WINTER** School
 Celebration Concert
 Friday, December 19th, 7pm
 Routh Hall
 Bromsgrove School B61 7HP
 Tickets £5
 Visit www.eibbws.org.uk for more info.

Countdown to **Christmas**

Get into the spirit by checking out **EVERYTHING CHRISTMASSY!!** on our Festive Pages!

Log on to:
redditchstandard.co.uk
bromsgrovestandard.co.uk
droitwichstandard.co.uk
 then click **Countdown to Christmas** and all will be revealed

Standard **Standard** **Standard**

PUBLIC NOTICES

For all your latest information on Planning Proposals, Traffic Notices, Goods Vehicle Operator Licences, Licences To Sell Alcohol and Probate Notices...

See page **28**



The Cotton Tails Nurseries have raised £2,000 for Birmingham Children's Hospital during this year's Fun Week. s

Tots lift hospital funds

A GROUP of nurseries in Rubery, Hagley, Northfield and Quinton have handed more than £2,000 to Birmingham Children's Hospital.

The cash was raised from the Cotton Tails Nursery Group's annual Fun Week where a host of activities take place for the children.

Special visitors and animals arrived to say hello and lots of 'toddler walks' were undertaken for the cause.

Nursery manager Lisa Daniels said: "A huge thank you to all our parents who helped contribute towards this special cause. This year the cheque presentation of £2,000 took place at Hagley setting with our very own Owl, which was part of the scheme arranged to provide extra funds (£5,008) for the hospital."

Over the years, the nurseries have raised well over £50,000 for the Birmingham Children's Hospital.

Sporting fun

PEOPLE in Bromsgrove in need of some company on Christmas Day can head down to the Victoria Ground for a special event.

From 12pm to 4pm, people can meet new friends and enjoy a drink and a mince pie at the Rousler's Bar at the home of Bromsgrove Sporting.

A club spokesperson said: "Everyone is welcome - Christmas Day is for sharing with all."

Woman arrested after passenger dies in crash

A WOMAN has been arrested on several motoring offences, following the death of another woman in a fatal crash in Belbroughton on Sunday afternoon.

Police said that around 4.50pm, at the junction of Quantry Lane and Heath End Road, a white Citroen C3 and red Honda Jazz collided.

Two ambulances, two paramedic officers, a MERIT trauma doctor with a critical care paramedic, the WMA's Critical Care Car, the Midlands Air Ambulance Critical Care Car from Strensham and a BASICS emergency doctor from Mercia Accident Rescue

by Tristan Harris
tristan.harris
@bullivantmedia.com

Service (MARS) attended the scene.

On arrival, ambulance crews found a woman in her 70s, a passenger in the one of the cars involved, in a critical condition and receiving care from an off-duty paramedic. They immediately began administering advanced life support.

But, despite best efforts, nothing could be done to save her and she was confirmed dead at the scene.

A man, the driver of the first car, was treated for seri-

ous injuries and was taken on blue lights to Queen Elizabeth Hospital in Birmingham.

A second woman, the driver from the second car, was assessed and discharged at the scene.

A 29-year-old woman was arrested on suspicion of causing death by dangerous driving, causing serious injury by dangerous driving, driving under the influence of drugs and driving whilst disqualified.

Police are investigating and have urged witnesses or anyone with information or dash cam footage to email sciu.south@westmercia.police.uk with what they know.

REDDITCH

TECH CENTRE

Repairs & Tuition in Your Home

Local, Friendly, Reliable - Right When You Need It!

Hi, I'm Carl - your local tech expert based right here in Redditch! Whether you're struggling with a sluggish PC, a misbehaving Mac, or just need a bit of help getting online - I come directly to your home to get things sorted - no stress, no jargon.

Repairs & Support for:

- PCs & Laptops • Apple Macs • Windows Issues
- Software Troubleshooting

1-to-1 Basic Tuition for Silver Surfers

But Everyone Welcome

- Email Setup & Use • Video Calling

- Home WiFi Setup & Security

- Smart TV Setup & Installation

Local, Independent Business

Fully Mobile - I come to you!

Friendly, No-Nonsense Support

**Call Carl on: 01527 509100
or 07887 877911**

info@rtechcentre.co.uk

www.rtechcentre.co.uk



SPECIALISTS IN ALL ASPECTS OF ROOFING

New Roofs - Roof Repairs - Flat Roofing
Fascia, Soffits & Guttering - Cladding
Moss Removal Chimney / Ridge Tile Repointing
Local References Available - Free Quotations

For a FREE quote, contact the local company you can trust

Birmingham - 0121 667 8938

Redditch - 01527 906 586

Park House, Bristol Rd South, Rednal,
Birmingham B45 9AH

www.longbridgecladdingandroofingltd.co.uk
sales@longbridgecladdingandroofingltd.co.uk



Maternity experience led entrepreneur to start her business

REDDITCH entrepreneur and mum of two Rebecca Berry, founder of Berrykin Marketing, has been shortlisted for Female Entrepreneur of the Year at the UK Small Business Awards, less than a year after launching her company.

Rebecca's entrepreneurial journey began after she experienced maternity discrimination in the workplace - a turning point which motivated her to take control of her career, redefine her future and build something of her own.

Determined to create a working life which respected both her skills and her role as a mother, she established

Berrykin Marketing from scratch while raising two young children.

Rebecca said: "In many ways, my business was born from a difficult experience. Facing pregnancy and maternity discrimination pushed me to back myself and build something on my own terms."

"To be recognised nationally less than a year later is incredibly meaningful."

"I'm proud to represent Worcestershire and show other women that they can rewrite their story too."

Drawing on her 15-year corporate background, Rebecca built Berrykin Marketing into a thriving business in under 12 months.

As a freelance PR and marketing specialist, she works with UK brands and business leaders to build recognition, elevate reputation and drive growth through strategic storytelling and integrated marketing.

Rebecca Berry, founder of Berrykin Marketing.



Rowers make a splash at GB nationals

by **Tristan Harris**
tristan.harris@bullivantmedia.com

MEMBERS of the Bromsgrove-based Mercian Fitness Indoor Rowing Club delivered an outstanding performance at this year's British Rowing Indoor Championships (BRIC).

Established as a national force after their latest results, the club has members aged between 52 and 80 from Bromsgrove, Droitwich, Redditch, Halesowen, Worcester and Stourport who train at the centre in Breme Park and online from the comfort of their own home.

Mercian's squad showcased depth, discipline, and the power of long-term, intelligent training.

They earned two gold medals at the BRIC, with Pat Taylor, from Halesowen; and Eileen Bicknell, from Droitwich; crowned British champions in their respective age categories.

Pat's gold was particular-

ly special - she defended the national title she won last year, achieving back-to-back BRIC victories and confirming her status as one of the strongest masters athletes in the country.

Eileen delivered a decisive, career-highlight performance to claim her own British title. Her win stood as a superb example of what committed, progressive masters training can achieve, especially in the older age categories.

Carol Goode, from Stourport, delivered a powerful, disciplined race to secure a BRIC medal, demonstrating superb tactical execution and consistency under race pressure.

Corinne White added another medal to Mercian's tally with a strong, competitive performance in her category.

Mercian Fitness has built a reputation for taking the over 40s - many of them new to competitive sport - and developing them into capable, confident masters athletes.

Coach Ian Northcott said this year's BRIC results underscored that ethos with multiple personal bests and athletes



Members of Mercian Fitness Indoor Rowing Club enjoyed some great results at the British Championships. s

competing across nearly every masters category and securing podiums at national level.

He said that all reflected a training environment where community, evidence-based coaching, and ambition coexisted.

"Our squad trains with purpose, intelligence, and heart.

Age isn't a barrier here: it's a strength.

"Pat, Eileen, Carol and Corinne have shown what's possible when masters athletes back themselves and each

other. I'm incredibly proud of them. The rest of the team secured personal bests too.

"With national titles secured and multiple podiums achieved, the club now turns its attention to the next competitive cycle - promoting healthy ageing, technical excellence and accessible high performance for adults of all ages."

Anyone interested in joining the free fitness community can visit: fitafter50.uk for more information and to sign up and try out the sport.

So much more than self storage

Wellesbourne, Shipston-on-Stour, Mickleton & Long Marston

We can help you move house, build an extension or start a new hobby

Call Lindsey 0800 772 0200
hello@beyondstorage.co.uk
Wimpstone Fields, Wimpstone
Stratford-upon-Avon CV37 8NN

Beyond Storage

ssa
self storage association
United Kingdom

SNAGDOCTOR
Specialists in Surface Repair & Restoration

Why Replace When You Can Repair

- Bathroom repairs undertaken • Kitchen repairs undertaken including worktops, units & doors
- Window and Door repairs • Brickwork repairs.

Mobile: 07359 673282 Office: 01905 886377
Email: worcester@snagdoctor.co.uk
Web: snagdoctor.com/worcester
Contact us on WhatsApp

Survivor Jo urges all of us to stand up to cancer



Jo Day, from Bromsgrove, survived cancer and is now backing a new screening checker. s

A BROMSGROVE woman who survived cancer after losing 15 members of her family to the disease has welcomed a new screening checker.

by **Tristan Harris**
tristan.harris@bullivantmedia.com

Jo Day is now being regularly monitored and is backing a new, simple-to-use, screening eligibility checker developed for Stand Up To Cancer – a joint campaign from Cancer Research UK and Channel 4.

The online checker features a host of famous faces including Meera Syal, Jessie J, Rosie Jones, Hugh Bonneville, Kelly Holmes, Davina McCall and Krishnan Guru-Murthy.

Statistics show around nine million are not up-to-date with their cancer screening. This new tool enables people to quickly check which

NHS cancer screenings apply to them and access helpful advice to decide if they want to take part. The celebrities will help break down barriers and explain why screening is important to them.

Screening can detect cancer early, when treatment is more likely to be successful and - in some cases - prevent the disease from developing altogether.

Jo, whose mum survived breast cancer thanks in part to screening, has shared her story to help raise awareness.

Jo said: "I'll never forget my dad thanking me for reaching my 49th birthday because his sister died of cancer aged 48.

"Little did we know at the

time of that conversation I actually had bowel cancer.

"It's so sad but I was lucky because I had symptoms and it was caught early.

"But even knowing what I did about my family, I didn't like the idea of bowel screening.

"Now I tell everyone not to ignore their screening invitation because it's better to be safe than sorry."

Jo was diagnosed with early-stage bowel cancer after having surgery to remove a polyp in November 2024.

She noticed blood in her poo over a period of two months and assumed she had piles. She reported it to the doctor and was seen within seven days and given a colonoscopy.

Jo added: "They found a polyp but lots of people have those, so I still didn't think it was anything serious – I

thought I'd have it removed and that would be it."

But tests results after the surgery in December revealed that Jo's polyp was actually cancerous.

"It was such a shock, but I felt really lucky that they'd caught it before it had spread any further," she added.

"We have a family history of relatives dying in December so breaking the news to my parents was one of the worst things I've ever had to do."

Jo's relatives have had cancers ranging from breast, prostate, blood, lung, bowel and ovarian so the family are now trying to get permission to test her cousin's archived tissue samples for Lynch syndrome – a genetic alteration that increases the risk of several cancers including bowel.

Despite their tragic fam-

ily history, Jo's parents are both cancer survivors. Her dad, Ron Larvin, was diagnosed with prostate cancer in 2016 after experiencing symptoms.

Six months later a routine mammogram revealed that her mum Mary had two completely different cancers in the same breast at the same time.

For Jo's sake, Mary is now being tested to find out if she has the faulty BRCA1 or BRCA2 gene which carries a 70 per cent risk of developing breast cancer by aged 80.

Stories like Jo's underline the urgent need to speed up life-saving progress in cancer research.

The screening checker is just one part of this year's Stand Up To Cancer campaign, which will culminate in an unmissable night of

television tonight (Friday, December 12) on Channel 4.

Fronted by Davina McCall and Adam Hills, alongside a host of celebrity guests, the live broadcast will feature special editions of much-loved shows like Celebrity Gogglebox and The Last Leg, moving patient stories and fundraising moments.

Jo added: "I'm really excited to support this Stand Up To Cancer initiative, knowing it could help save lives as well as support fundraising for research into cancer.

"I have a friend with three young children who survived cervical cancer because it was found early through screening so I hope people will take a few minutes to look at the screening checker."

Visit standuptocancer.org.uk/screening-checker for more on screening, to sign up and spread the word.



TAYLORS SOLICITORS

Your local friendly specialist lawyers

Everyone here at Taylors Solicitors would like to wish you all a very Happy Christmas and Best Wishes for the New Year



TAYLORS SOLICITORS

1 Mason Road, Headless Cross, Redditch, Worcestershire, B97 5DA
01527 544221 | stephanie@taylorssolicitors.com (wills and LPAs)



Residents can help borough tree ambition

by **Ashleigh Osborne**
ashleigh.osborne@bullivantmedia.com

REDDITCH Borough Council wants residents to help protect and enhance woodlands by growing trees at home.

Ash dieback disease has had a devastating impact on woodlands across Europe, including in Redditch.

While the borough is fortunate to have nearly 3 million trees, the council is replacing lost examples and planning for the future as a vital part of its woodland management plan.

When saplings are replanted, they have a greater survival rate the more mature they are.

Mature saplings are costly, however, and no external funding is available for this sort of future-proofing. That's where residents can help.

The council's portfolio holder for woodland management, Councillor Jen Snape, said: "We need residents who care passionately about protecting our woodlands for future generations, to get involved and volunteer to grow and care for saplings at home."

"This is a fantastic opportunity for residents and the council to work

together for the benefit of everyone. It will also help keep replanting costs as low as possible so our budget can be spent on other vital services."

The council is focusing on planting resilient native species to improve biodiversity and reduce the risks of having a monoculture.

The species the authority is most keen to cultivate locally is *Quercus Robur*: the English oak.

Autumn is the perfect time to collect acorns and the council can provide pots, soil, support canes, and expert advice to help people get started.

Coun Snape added: "It would be really useful if our volunteer growers could email us to let us know what they're growing and help us track progress until the saplings are ready to plant."

"When your tree is finally ready, you'll have naming rights and the chance to take part in the planting."

"You could name a tree in memory of a loved one or even after yourself."

"Either way, we'd love to hear from you."

Anyone wanting to get involved can email: growtrees@bromsgroveandredditch.gov.uk and the council will provide support and materials.

Helpers get VIP treatment



Community members who helped, supported and championed Chadsgrove Educational Trust Specialist College were invited to a celebratory afternoon. Picture by Marcus Mingins 4925008MMR

STAFF and students at Chadsgrove Educational Trust Specialist College held an afternoon to thank people from the community who have helped them in the past year.

The event was held as part of a campaign to promote specialist further education (FE) colleges and the good work they do, and coincided with the international day of persons with disabilities.

Those invited included science, technology, engineering and mathematics ambassador Nicola Knowles; Bromsgrove Town Crier Kevin Ward; Jules Evans, from the Royal British Legion; Bromsgrove District Council chairman Sam

Evans; councillors Shirley Webb (for Catshill) and Sam Ammar; and *Standard* editor Tristan Harris.

The visitors were presented with a certificate and a gift and treated to tea, coffee and cake.

Videos made by students Ellie and Dylan, to speak about the positive impact Chadsgrove College has had on their lives, were also played.

The specialist FE college campaign highlights establishments' key aims, including unlocking education, transforming lives and having a lasting impact on students who pass through their doors.

Chadsgrove College principal Deb Rattleley said: "I felt very strong-

ly about all young people having the freedom of choice when it came to further education.

"So we set up the college 10 years ago with just five students, to offer opportunities to those aged 19 and over.

"Since then we have grown and I want to say a huge thank you to everyone for all their help and support over the years."

She also thanked the dedicated staff who went 'above and beyond, day in, day out' and ensured young people could have a say in their futures.

"We need to maintain who we are and what we are - young people who can thrive," she added.

INTERNATIONAL METALS & CABLE RECYCLING LTD

We purchase all Ferrous and Non Ferrous Metal Batteries and Cables

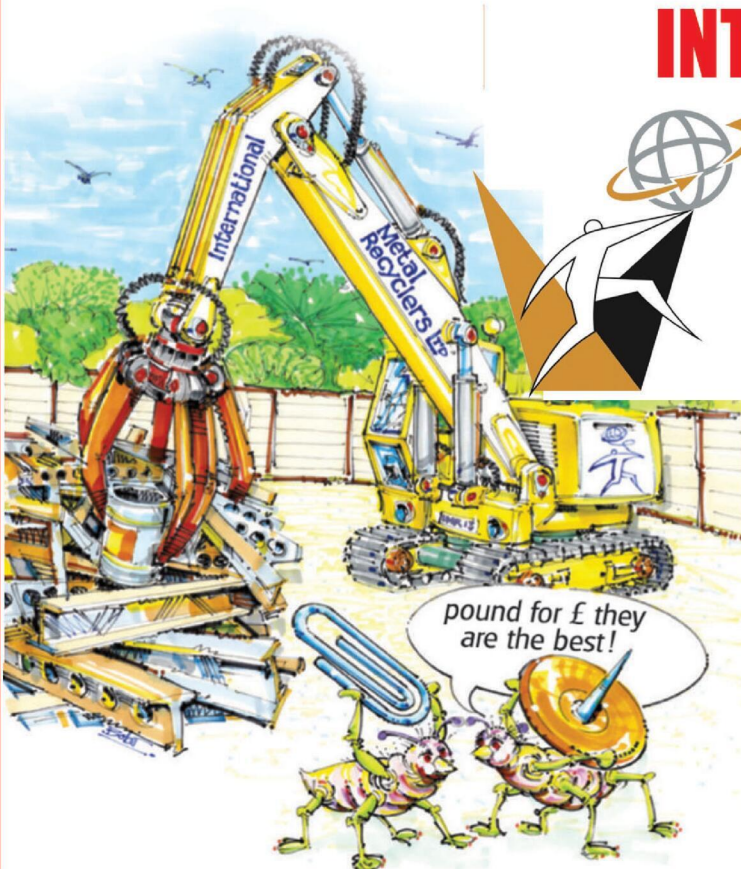
.....
Collection Service Available
.....

**Long Marston Road, Long Marston,
Stratford Upon Avon, Warwickshire, CV37 8AQ**

01789 721 288

david@imrltd.co.uk

Open Mon/Fri - 8am - 5pm



Mature tree set to be felled over safety fears

Horse chestnut is diseased

by **Tristan Harris**
tristan.harris@bullivantmedia.com

A DISTINCTIVE mature tree on a Droitwich Spa road is being removed after an assessment revealed safety concerns.

Work was due this week to fell the horse chestnut tree on College Green as it is infected with microscopic fungal-like organisms called *Phytophthora ramorum*.

The name translates as 'the plant destroyer' and *Phytophthora*-related species are behind some of the worst plant disease epidemics in history, including the Irish potato famine in the 1800s.

In trees, *Phytophthora ramorum* spores spread by wind-driven rain. When they land on a leaf, they grow into the tree by breaking down the leaf's cell walls. The parasite then grows in the tree, blocking its water transport system, leading to die-

back and eventual death. In the Droitwich tree, the disease has caused decay in 30 per cent of the lower trunk, meaning it is at risk of toppling. Given it is near a road and property, there is no option but to remove the tree.

Work was due to take about three days, with temporary traffic management in place to allow felling to take place safely.

A broadleaf Whitebeam (*Sorbus aria*) tree will be planted near the original location of the tree.

Councillor Beverley Hardman, Wychavon District Council's executive board member for environment, said: "It's always a disappointment when we have to remove any tree, especially one as mature as this.

"However, our first job is to protect the public and we're satisfied, based on expert assessment, the tree is unsafe and needs to be removed."

Coun Hardman apologised for disruption during the work and reiterated a new tree would be planted to replace it soon.

The horse chestnut tree on College Green, Droitwich Spa, is due to be removed but will be replaced with another tree. s

Looking back on an eventful year

IN MY LAST Westminster Diary of the year, I want to reflect on the past 12 months.

The biggest issue to affect Bromsgrove and the villages this year is the government's 85 per cent increase in our house-building target.

The thousands of us opposed to this increase aren't NIMBYs. We just want the government to build on brownfield first and, where houses are built, provide communities with the infrastructure they need.

Thank you to the more than 5,900 of you who signed my parliamentary petition calling on the government to reverse the increase.

Whatever the outcome, the fight for our green belt goes on and I will continue to hold the government to account. The A38 BREP works have caused frustration and I've been holding Worcestershire County Council to account.

BREP must deliver a noticeable improvement in reducing congestion and gridlock. Whilst the work continues, it makes no sense non-essential roadworks take place and I'm demanding the county council halts them.

I've consistently campaigned for business rate cuts and was proud to vote for that this year in the House of Commons. Labour, the Lib Dems and Reform UK all failed to back the Conservatives' (fully costed) plan to cut rates which would save businesses around £9,000 per year.

If we want to revitalise our high streets, the government needs to abolish business rates for retail, hospitality and leisure businesses, just like Conservatives will do when we're next in government.

Bradley Thomas
Bromsgrove MP



Westminster Diary

Bradley Thomas MP
writes for The Standard



OFTEN IMITATED BUT NEVER EQUALLED

While all costs are going up - **OURS ARE STAYING DOWN**

Due to our customer friendly services of No Door Salesmen, No Showroom and little overheads



NEW FLUSH WINDOWS

BEAUTIFUL COMPOSITE DOORS
Fully fitted
Competitive Prices



UPTO 30% OFF ALL WINDOWS



ALL PRODUCTS HAVE A 10 YEAR INSURANCE BACKED WARRANTY

BILL MOORE'S WINDOWS AND DOORS
A NAME YOU CAN TRUST

1 Brookside Close, Stratford-upon-Avon, Warwickshire CV37 9PL

01789 415171 • 07729 689239 • www.billmooreswindowsanddoors.co.uk



Every day in December, a single bus journey will cost no more than £1 on any route across Worcestershire.

Whether you're dashing into town for last minute gifts, visiting loved ones, or travelling to work, let the bus take you there for less this festive season.



www.worcestershire.gov.uk

 **worcestershire**
county council

SUPERVALUE FURNITURE & BED CENTRE QUALITY BRANDS FOR LESS

Who Are We?

- OVER 35 YEARS OF LOCAL SERVICE** - Caring for Droitwich homes with comfort, quality, and a personal touch
- COMMITTED TO "COMFORT FOR EVERY CUSTOMER"** - Supportive, stylish, and affordable mobility furniture from trusted British brands.
- FAMILY-RUN, FRIENDLY ADVICE** - Guiding you to the perfect Rise & Recline Chair or Adjustable Bed for your home.
- MORE THAN FURNITURE** - helping make life at home easier, more comfortable, and more enjoyable for you and your loved ones.



Riser Recliner Chairs

Enjoy comfort, support, and style with our wide range of quality recliner chairs and matching sofas.

- Choose from a huge selection of fabrics, leathers, and colours
- Find sizes to suit your home and personal comfort
- Take advantage of excellent Pre- and After-Sales Service
- Enjoy discounted prices & VAT exemption available

FREE UPGRADE



SHERBORNE
...the Home of Relaxation



Adjustable Beds

Experience effortless comfort and independence with our range of adjustable beds - designed for quality sleep and everyday ease.

- Simple, one-touch control
- Available in Single, Double, and Dual models
- Fantastic fabric and headboard options
- Discounted prices & VAT exemption available



Why Choose Us?

FRIENDLY, PERSONAL SERVICE - offering honest advice and personal attention you can trust.

FAST, HASSLE-FREE DELIVERY - Delivery often within 24 hours, with free setup and installation.

QUALITY PRODUCTS FOR COMFORT & STYLE - Furniture, beds, and mobility items chosen for quality and lasting comfort.

PROUD BRITISH BRANDS - Supplying trusted names like Celebrity, Sherborne, Highgrove, and Adjust-A-Bed.

TRUSTED & RELIABLE - Built on honesty, value, and a reputation you can rely on.

WE COME TO YOU - Home visits available by appointment - we bring our service to your door.

"Another Great Experience - Fantastic Service starting in the Showroom, right through to delivery and installation. Five Star Service! Fantastic Products!"
(L.H. Sept 2025)



"Fabulous Products. Lovely and Helpful Staff and Good prices - what more could you ask for!"
(CB August 2025)



"First Class Service again. Very reasonable prices for good quality furniture. Quick delivery. Very Helpful and Friendly Staff. Highly Recommend them!"
(MQ July 2025)



Free parking | Free local Delivery, Installation & Disposal Available | Family-run for over 35 years
Open 7 days! Monday to Saturday 9:00am – 5:30pm | Sundays 10:30am – 4:30pm



📞 01905 796507 | ✉ info@svfonline.co.uk

📍 21-29 HIGH STREET, DROITWICH SPA WR9 8EJ

SUPERVALUE FURNITURE & BED CENTRE QUALITY BRANDS FOR LESS

LARGE RANGE OF SUITES, SOFAS & CHAIRS UP TO 50% OFF TO CLEAR

Sleeppeeze Super King for the price of a King
King for the price of a Double
5% discount on a Double
Applies to mattress only purchase, mattress and divan purchases and mattress, divan and headboard purchases

HYPNOS **AUTUMN SALE**
KING SIZE MATTRESS FOR THE PRICE OF A DOUBLE

IN STOCK FOR IMMEDIATE DELIVERY!

LAZBOY
For life comfortably

RANGES OF OAK BEDROOM FURNITURE IN STORE

FREE UPGRADE
CELEBRITY
DUAL MOTOR / CLOUD ZERO RISER RECLINERS AVAILABLE IN 3 SIZES

ENCHANTED HOME BED
LUXURIOUS HANDCRAFTED BESPOKE BEDS & MATTRESSES

HIGHGROVE
4'0" / 4'6" DIVAN SET PACKAGE DEALS FROM £399

Silentnight

Buoyant
NEW CORNER GROUPS IN STOCK

SALE £4495 NOW £995
UK MADE CORNER GROUP, MANAGERS SPECIAL WAS £1495 NOW £995 !! LIMITED STOCK

FROM £495
FROM £399
RISER RECLINERS **LARGE RANGE IN STORE**

NEW GPLAN MODELS INSTORE

Harrison Spinks
The True Bedmakers
NEW RANGE NOW IN STORE

LAZBOY
For life comfortably
MORE LAZBOY MODELS IN STORE

NEW MANGO LIVING ROOM RANGE IN STORE

LUXURY SOFA BEDS IN STORE

BEDROOM RANGE AVAILABLE IN GREY MIST OR WHITE WITH SOLID OAK LIGHT TOPS

OAK LIVING ROOM/DINING ROOM RANGE

UK MADE FULLY ASSEMBLED BEDROOM RANGES

BESPOKE UK MADE SUITES, SOFAS & CHAIRS INSTORE

CUSTOM SIZES AVAILABLE TO ORDER

EX SHOWROOM DISPLAY BED MODELS, SAVE UP TO 50% OFF TO CLEAR



Free parking | Free local Delivery, Installation & Disposal Available | Family-run for over 35 years
Open 7 days! Monday to Saturday 9:00am – 5:30pm | Sundays 10:30am – 4:30pm



01905 796507 | info@svfonline.co.uk
21-29 HIGH STREET, DROITWICH SPA WR9 8EJ



Avoncroft offers up more festive activity

by **Tristan Harris**
tristan.harris@bullivantmedia.com

VISITORS to Bromsgrove's Avoncroft Museum experienced Christmases Through Time at the weekend and the popular event is back this week.

The festive extravaganza runs from 10am to 3pm tomorrow and on Sunday.

The attractions include a Christmas stocking trail where children pick up a handmade festive stocking and visit each of the museum's historic homes as part of a Through Time Trail. They are also tasked with finding elves hidden around the site.

There is a 'Christmas wish tree' where people can write messages for loved ones and the mini railway costs just £1 per ticket.

The Tudor and Toll houses, 1940s prefab and other buildings have been decorated in the traditional style of their eras.

On Saturday, Stourbridge-based a-capella choir Stream Through Time performed Christmas songs in Guesten Hall and there was a carol service in the Mission Church, featuring Bromsgrove Community Choir.

Children can write and decorate letters to Father Christmas and hand them to the man in the big red suit, as well as having selfies with him.

Seasonal food and drink is avail-

able from tea rooms and this weekend, historical re-enactors will set up a medieval Christmas at the Town House.

The group will make Christmas decorations, cook and hold religious celebrations, including Christmas prayers in the Mission Church. Other tasks will include preparing gifts, painting and decorative textile work, gaming and singing.

On Saturday, Bromsgrove Recorder Consort will perform music from throughout the ages.

On Sunday, Redditch Recorder Group which will be joined by Alcester Male Voice Choir.

Visit avoncroft.org.uk/whats-on, or call 01527 831363 for more information and to buy tickets.



Bren and Simon Henderson cooked pottage in the Tudor house. Pictures by Tristan Harris. © Bullivant Media Group Ltd.



Stream Through Sound performed their own Christmas songs, delighting those watching.

Autumn SAVINGS

Fit in time for

Christmas

T & C's Apply

Buy now pay

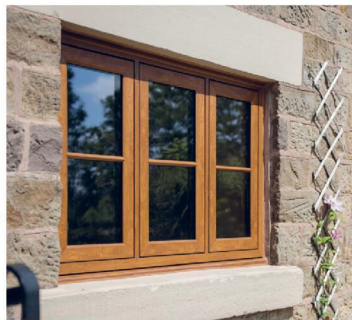
2026

or 6 months after installation, spread the cost at

19.9% APR REPRESENTATIVE*



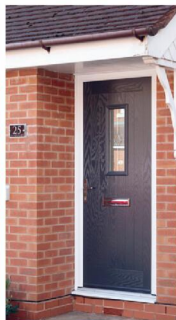
LIVING SPACES
Orangeries, Conservatories & Glass Rooms



WINDOWS
Exclusive UPVC & Aluminium Range



FRONT & BACK DOORS
Composite, UPVC, Solid Core & Aluminium



FEATURE DOORS
French, Patio & Bi-Folding Doors

MIDLANDS' LARGEST SHOWROOMS
OPEN 7 DAYS A WEEK

Kidderminster Showroom
Worcester Road
Kidderminster DY10 1JR
Tel: **01562 814868**

Worcester Showroom
36 Carden Street
Worcester WR1 2AT
Tel: **01905 886750**

5STARWINDOWS.CO.UK



*Credit is subject to application and affordability. Terms and conditions apply. £1000 minimum order value applies to all finance plans, with a maximum loan value of £50,000 and a minimum deposit of £99. £99 deposit option is only applicable to orders up to the value of £5,000 including VAT. Balance can be repaid within 6 months with a £29 exit charge. 5 Star Construction Services Limited, Worcester Road, Kidderminster DY10 1JR (FRN 730066) trading as 5 Star Windows & Conservatories is a credit broker and is authorised and regulated by the Financial Conduct Authority. Credit provided by Novuna Personal Finance, a trading style of Mitsubishi HC Capital (UK) PLC, authorised and regulated by the Financial Conduct Authority (Register no. 704348).

Join us at your local church this Christmas...

**St Leonards CofE, Church Hill, Frankley,
B32 4BL / 0121 4753484**

Christmas Eve

5pm - Christingle and Nativity Service

9pm - First Communion of Christmas

Christmas Day

10am - Christmas Day Eucharist

**Beacon Church Centre URC, Whetty Lane,
Rubery, B45 9DL / 07526 250645**

Christmas Eve

11.30pm - Midnight Communion

Christmas Day

10.30am - Christmas Day Worship

**Holy Trinity CofE, Rose Hill, Lickey, B45 8RR
with**

**St Catherine's CofE, St Catherine's Rd,
Blackwell B60 1BN / 0121 445 1425**

Christmas Eve

10am - Holy Communion at Holy Trinity

3pm - Christingle at Holy Trinity

4:30pm - Christingle service at St Catherine's

Christmas Day

10am - Christmas Communion at St Catherine's

10am - Christmas Celebration at Holy Trinity

**St Stephen's CofE, Edgewood Road, Rednal,
B45 8SG / 0121 243 4634**

Christmas Eve

3:30pm - Family friendly Crib Service

11.30pm - First Mass of Christmas

Christmas Day

10.30am - Christmas Day Service

**Longbridge Methodist Church, Bristol Rd
South, B45 9TY / 0121 257 2584**

Christmas Eve

11.15pm - Midnight Communion

Christmas Day

11am - Christmas Day Service

**St Chad's CofE, New Road, Rubery, B45 9JA /
07748 998227**

Christmas Eve

4.30pm - Family Crib Service

11pm - Midnight Eucharist

Christmas Day

10am - Fun-filled Family Eucharist

**St Andrew's CofE, Sandhills Road, Barnt
Green, B45 8NR with**

**St Michael's CofE, Cofton Church Lane, Cofton
Hackett, B45 8PT / 0121 447 7097**

Christmas Eve

3pm - Crib Service at St Andrew's

4:30pm - Family Carol Service at St Andrew's

6:30pm - Carols by candlelight at St Andrew's

11pm - Midnight Communion at St Michael's

Christmas Day

9:30am - Informal Christmas Communion at St

Andrew's

**Our Lady's RC, Leach Green Lane, Rubery,
B45 9BQ / 0121 453 3452**

Christmas Eve

9.00pm - 'Midnight' Mass with Carols

Christmas Day

11.15am - Christmas Day Mass

**We will also be gathering for 'Beer and Carols' (other drinks are available!) at the
Hawthorns Social Club at 7.30pm on Friday 19th December -
you buy a drink, we provide the carols!**

**The New Frankley Gathering is also offering an opportunity to seek light in the darkness on
Sunday 21st December from 10am - 12pm at 4 Arden Road, Frankley B45 0JA and are
hosting carols around the tree outside the Arden Road Shops in Frankley from 4pm on
Tuesday 23rd December.**

Making sure the town is heard

IN THIS second and final part of A Day in the Life of an MP feature, *Standard* editor **Tristan Harris** finds out more from Bromsgrove's Bradley Thomas about what the job entails on a daily basis.

Generally, MPs work in Westminster Monday to Thursday and in their constituencies from Friday to Sunday.

The Commons sits at 2.30pm on a Monday to give MPs time to return from all four corners of the kingdom.

Sessions are then held between 11.30am and 7.30pm on Tuesdays and Wednesdays (the latter including Prime Minister's Questions) and from 9.30am to 5pm on a Friday.

As well as the usual business of debating bills, time is also put aside for any urgent questions. On the Monday I was there, that centred on the Office of Budget Responsibility's statement about the leaking of the Budget.

The MP and his team meet each morning to discuss the House of Commons' upcoming business - scheduled debates usually alternate between the 18 different government departments, including health, defence, the Home Office, the Foreign Office, transport and others. This means each one gets topics aired in the house every six weeks.

Mr Thomas said he always tried to ask questions of every department and on all the issues because, despite what people may think, national government and the decisions made directly affect people living in Bromsgrove and other constituencies in their daily lives in some way.

This can vary, depending on constituency - for example, rural communities will be more affected by the Department for Environment, Food and Rural Affairs whereas the Department of Health's decisions, and the Home Office's, will impact on most people's lives.

Mr Thomas added: "You occupy this position of great privilege but you are also providing a voice on your constituents' interests."

"We have political party guidelines but I represent everyone's interests in Bromsgrove."

As previously mentioned, the bulk of the MP's work is for his or her constituencies.

Mr Thomas said: "I came here to Westminster to do an important job but it is important to get to Bromsgrove as much as I can."

From Friday to Sunday, MPs attend local events and hold surgeries to find out about issues affecting people in the area they cover.

Among the recent ones taken up by Mr Thomas are the shortage of places at Bromsgrove high schools and protecting Bromsgrove's green belt from over-, and unwanted, development.

Just last week, the constituency role and the Westminster world came together when Mr Thomas handed in a petition to parliament which was signed by more than 5,900 people in Bromsgrove.

The document demanded the government justify a 'flawed' formula used to calculate an increased housing target and to rebalance the number so 'Birmingham took its fair share'.

It also demanded an 85 per cent increase in the district's housing target be reversed, in addition to



Bradley Thomas, in the blue suit, handed in a petition to protect Bromsgrove's green belt. s

demanding a reversal of the reduction in Birmingham's target.

Mr Thomas has also highlighted the good work of local schools, organisations and charities, whilst speaking in the Commons.

Closer to home, constituents email, write in or attend surgeries to highlight issues to Mr Thomas, and he and his team will listen or read and see if they can help. The MP's caseworkers are busy working behind the scenes on these issues and, if they cannot help, they signpost people towards a person or organisation who can.

Mr Thomas has recently wel-

comed Shadow Farming Secretary Robbie Moore MP to Bromsgrove to speak about how government decisions are impacting on rural communities, including the Family Farm Tax. And he has visited the Feeding Trust in Alvechurch.

My day in Westminster concluded watching an e-petition debate on the Children's Wellbeing and Schools Bill. Mr Thomas was one of 14 MPs debating the issue, with a particular emphasis on the for and against of home-schooling and the importance of safeguarding measures.

Mr Thomas was able to speak on issues raised by his own constitu-

ents - again showing how national-government political debate can impact families in Bromsgrove.

Recently, the Bromsgrove MP has toured the district, including Hagley and Rubery, to make himself more accessible.

"I stood for election so I could represent everyone in Bromsgrove - no matter how they voted or their political allegiance," said the MP.

"I want them all, if they feel I can help, to know they can get in touch and I'll do what I can."

Email: bradley.thomas.mp@parliament.uk or call 01527 872135 to contact Mr Thomas' team.



The Bell Inn

Lunchtime Specials and Under 60s Menu £10.25

Tuesday to Saturday
12 noon to 5pm

Golden Oldies Only £9.75

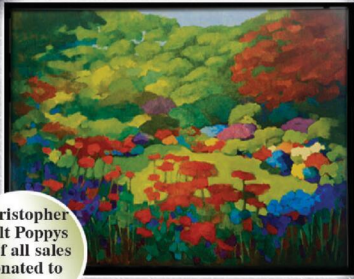
Golden Oldies also available
Tuesday to Saturday
12 noon - 5pm

Mid Week Roast on a Thursday £12.25

3 course Sunday Lunch £19.25 - Sunday 12 noon - 4pm

Full Main Menu Tuesday - Saturday 12 noon - 9pm, Sunday 12 noon - 4pm

Evesham Road, Astwood Bank, B96 6AX Tel: 01527 894213



Christopher Holt Poppys
% of all sales donated to Parkinson's UK



Chris Lewis
Photographs from around the world



Sally Balcombe
Charcoal of Jaguar original



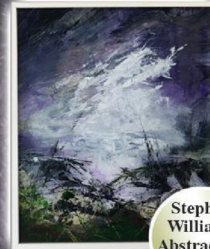
Ceramics By Bryonie Williams



SUPPORTING LOCAL ARTISTS AND VARIOUS CHARITIES
castlecontemporaryart.ho@gmail.com



Jean Davis
Original on Canvas prints Ltd Editions available. % given to UNICEF



Stephen Williams
Abstract on Canvas



Christine Skirrow, Mixed media originals framed and unframed available



Muntaz Shah



Mike Luck Copren crafts, wood turning



Handcrafted jewellery by Olivia J William



Handcrafted jewellery by Olivia J William

OPEN AFTERNOON

Sunday 21st December
12 noon - 4pm

Mince Pies, Mulled Wine,
Christmas Music & Songs

Everyone Welcome

Les Topham Garden Centre
Castle Nurseries B80 7DF

Adjacent to
Olivia J Hair & Beauty Salon

FREE GIFT

on presentation of this voucher with every appointment from
1st December 2025 to 28th February 2026

Hair Salon: **07859 012370**
Beauty Room: **07545 859613**



OLIVIA J
Hair Salon



Monica Smyth and Kay Bennett, of Better Together with clients Audrey Baillon, Emma Harris and Helga Mutton and Alex Doyle launch their 12 Days of Christmas project. s

HELPING HAND: A Redditch-based company dedicated to supporting people with companionship and connection is spreading some Christmas cheer this December.

Better Together, a discreet concierge service to older people across Worcestershire, has raised funds for The Healing Horse Sanctuary - a charity that provides rehabilitation and lifelong care for rescued horses.

During its 12 days of Christmas campaign, which started with a raffle on December 1, the team and their companions will commit various acts of kindness across the community, including delivering handmade Christmas cards to nursing homes and donating knitted hats to homeless shelters.

Susie Gessey from the

Bromsgrove-based Healing Horse Sanctuary, said: "Our horses and ponies need 24-hour access to food and hay during winter to keep warm and healthy so our food bills double this time of year."

"Better Together raising funds for us at Christmas is so very kind, much appreciated and much needed."

Better Together founder and director Alex Doyle was delighted to support a meaningful cause this Christmas, adding community spirit and kindness were at the heart of everything Better Together does.

She added: "Our clients and companions are amazing and are benefiting hugely from The Healing Horse Sanctuary and we cannot thank them enough. We are really looking forward to giving back just a little bit."

Colin's new album is an industry first

A JINGLE writer from Bromsgrove is claiming a world first with the release of his new album, Riker Up! today (Friday, December 12) on Charly Records.

The vinyl features 14 soulful tracks (plus an extra six on CD), in homage to the sounds of the 1960s. It was all created by Colin Day, however, with production and vocals courtesy of the latest AI software.

The 67-year-old Northern Soul fan was originally challenged by his wife to write her a love song which, ten years later, has turned into a brand-new career, with six sell-out singles and a deal with the heritage label which celebrates its 50th anniversary in 2025.

He said: "I'm buzzing for people to hear all the new tracks - there's some proper surprises on there."

"The support so far has been amazing and I'm genuinely grateful for everyone who's pre-ordered it."

"I'll admit, there's a tiny flutter of nerves too."

"These started as private love songs, so letting them loose into the world is exciting - and more than a bit surreal."

A Charly Records spokesperson said they thought it was the 'world's first AI-assisted physical album release', adding they were proud to be working with Colin on his breakthrough album and,



songs into it and it was coming back with these mid-60s soul sounds.

"They sounded authentically vintage Northern Soul records."

Colin said he totally understood the apprehension about AI and its impact on the creative industries.

"I'm not out to start a movement or create a new genre."

"I'm not an expert on AI and certainly no expert on the ethics of it, so I genuinely share those concerns."

"I've had a great career up to now which I thought was winding down and was happily calling myself semi-retired."

"But now I've got a brand new career in the music business as a record producer and I'm busier than ever."

Visit this story at: bromsgrove-standard.co.uk for more.

amidst 'overwhelming' success, congratulating everyone involved.

Colin added, after working with sound, writing and producing voice-overs and more than 200 jingles, the whole thing 'had all been one big happy accident'.

In his bedroom studio, Colin gradually built up an album's worth of melodies but had no real plan for them.

Last year became a turning point as Colin discovered the latest AI-powered studio software and became obsessed with the technology, spending thousands of hours experimenting late into the night.

He said: "It was like I'd stepped into a time machine, and was back in Detroit or Chicago in 1967 because I started programming my

Colin Day at home in his studio. Picture by Marcus Mingins 4225012MMR



Avon ROOFING

PROFESSIONAL RELIABLE TRUSTED

avonroofing6@gmail.com • www.avon-roofing.co.uk

PROFESSIONAL • RELIABLE • TRUSTED

- ◆ New roofs
- ◆ Re-roofs
- ◆ Roof repairs
- ◆ Tiles/slates replaced
- UPVC ROOFLINE PRODUCTS**
- ◆ Fascias
- ◆ Cladding
- ◆ Soffits
- ◆ Guttering
- ◆ Down pipes

15% OFF

when mentioning this advert

- ◆ Flat roof solutions
- ◆ EPDM rubber roofs
- ◆ Chimneys rebuilt
- ◆ Re-pointing
- ◆ Re-bedding
- DRY VERGES**
- DRY RIDGES**
- EAVES PROTECTION SYSTEMS (EPS)**

Commercial roof projects undertaken

Free Quotations - All Work Guaranteed

Call Jake on 07389 844 856 or 01789 507 131 for a free quotation

Find us on Google

JustGo!

Holidays

For more information, or to book, please call **03332 342 514** Quote **OSG**

★★★★★ Trustpilot

Reader Travel



WICKED THE MUSICAL EVENING SHOW & LONDON

Departing Thu 29 Jan '26

Wicked is the sensational musical that hits stages like a twister with its electrifying score, stunning sets and a story that turns Oz on its head. Full of memorable songs such as No Good Deed and Defying Gravity, this is guaranteed to leave you spellbound!

Your break includes

- ✓ Return coach travel from **Redditch, Bromsgrove**
- ✓ Overnight stay at a selected hotel outside London (JG3 or JG4 rating) with full English breakfast
- ✓ Stalls or Dress Circle ticket (evening performance)

2 Days by Coach **only £169**

Single Supplement £45



YORK & SCENIC YORKSHIRE

Departing Mon 23 Mar '26

Join us on this idyllic break to beautiful Yorkshire, where we combine the rolling hills and panoramic landscapes with charming Harworth and Skipton Market. With a visit to historic York too, this lovely break is the perfect contrast of city and country!

Your break includes

- ✓ Return coach travel from **Redditch**
- ✓ 4 nights at the Britannia Hotel, Leeds Bradford Airport (JG2 rating) with dinner & breakfast
- ✓ **2 for 1 bar** (6pm-9pm) on selected drinks
- ✓ Excursions to York, Skipton Market & Harworth

Optional excursion to Harrogate (£12pp)

5 Days by Coach **only £319**

Single Supplement £75

These packages are subject to Just Go! Holidays terms & conditions. Coach bookings are protected by Bonded Coach Holidays & the Association of Bonded Travel Organisers Ltd Ltd. All holidays are ATOL protected No. 0899. Prices are per person, based on two people sharing a room & based on bookings made up to 7 days post publication, after which prices may fluctuate. Choices of date, hotel, airport or pick up location may incur a supplement. Please see website or call for full details.

Visit us online at justgoholidays.com/OSG

033 numbers are free within inclusive minutes packages otherwise standard rates apply.







THE FOX INN

CHADDESLEY CORBETT

Bookings now being taken for *Christmas*

CHRISTMAS FAYRE MENU *(excludes Sundays)*

Adults: £20 | Children: £15

Single course festive carvery -

Adults: £15 | Children: £12

CHRISTMAS DAY MENU

FULLY BOOKED

Adults: £80 | Children: £50

BOXING DAY MENU

LAST FEW SPACES

3 courses

Adults: £25 | Children: £20

NEW YEARS DAY MENU

3 courses

Adults: £20 | Children: £15





Just for Pets

Pets, Bring Your Owners

Check out your local store today



Just for Pets, 20 Market St, Bromsgrove B61 8DA (opposite Asda)
Just for Pets, Saltway, Droitwich WR9 8LA (opposite Waitrose)
Just for Pets, New Road, Kidderminster DY10 1HG

www.justforpets.co.uk

DOG



10% OFF

Your first online order with code *DESIGNER10*

DOGONLINE.CO.UK



10 Reasons to support Local Shops and Businesses

It's now more and more important that we support local shops and businesses because of the threat they face from multi nationals and from on line sales - they offer so much not only to their Customers, but also to the local community as a whole.

- 1. LOCAL SHOPS AND BUSINESSES** create and sustain more jobs locally and together they are the largest employer nationally. They provide jobs to the residents of our communities and in many cases, they provide better working conditions and benefits than the big chains do.
- 2. LOCAL SHOPS AND BUSINESSES** are at the centre of our local economy, and shopping locally is better for the local communities as research has shown that money spent locally stays within the community and helps our local community to thrive - unlike spending with the multi nationals or online agencies based far from our community or even far from our shores.
- 3. A BETTER SHOPPING EXPERIENCE** - Local Shops and Businesses offer a Better Quality of Service. Local Business Owners and their Staff offer much better service because they really care about what they do. They are far more likely to offer better, honest and realistic advice about the choice of products and services they provide - they are often far more likely to go over and above the call of duty to ensure your satisfaction.
- 4. AFTER SALES SERVICE AND ATTENTION** - Local Businesses are always there to call upon if you do need them after you've made your purchase for advice and attention if required.
- 5. CREATIVE, AND DIVERSE** - Local Shops and Businesses provide so much more choice in terms of uniqueness - so you can in turn, develop your own style and even when you are searching for that personal gift with a difference, you are much more likely to find it in a local shop rather than the same as everyone else, in a multi-national.

Supporting the **LOCAL** Shops and Businesses in your area



Direct Floors

Home service

Carpets | Vinyls | Laminates | Wood



Shop at home for your new carpet and flooring and receive up to 30% off shop prices. We are COVID SAFE with 1,000's to choose from with our mobile showroom!

- ◆ Mobile showroom to your home
- ◆ 1000's Samples to your door
- ◆ Fully qualified insured fitters
- ◆ Family run business since 1999
- ◆ Furniture moved & carpets uplifted for OAP'S & disabled free of charge



Call 7 days a week 8am-9pm
01527-894777
www.direct-floors.co.uk

- 6. COMPETITION** – A local marketplace of hundreds of small businesses is the best place to ensure low prices and competition.
- 7. MORE ENVIRONMENTALLY FRIENDLY** – Small Independent Businesses usually source locally and they use less packaging than the bigger retailers. This in turn reduces the global footprint as they inevitably need less transportation thereby reducing ‘pollution’ for us all – and of course it means less waste and less goes into fill up landfills.
- 8. LOCAL SHOPS AND BUSINESSES** help build local communities and community identity. Communities are defined by their local distinctive shops and Businesses and the personalities of the Owners of these shops shines through – a Local Shopping Centre with vibrant shop fronts is a perfect place to meet and shop and interact with other members of your community – it’s informative as well as the displays and services on offer, keep us all up to date with not only the tried and tested products but all the new innovations too.
- 9. SUPPORTING LOCAL ENTERPRISING ENTREPRENEURS** – people like Sir Alan Sugar – love him or not, you have to admire the man who started selling car aerials from the back of a van, bought with his modest savings – he relied on the support of his local community to kick start his business during his early and difficult years – so why not support your local businesses too – who knows you may be giving other budding local entrepreneur the little nudge and help they need to succeed and create more jobs locally and even more choice within our own vibrant community.
- 10. IT’S FUN TO SHOP LOCALLY ON YOUR LOCAL HIGH STREET**, your local neighbourhood Shopping Centre or Town Centre – its much more fun that looking round a large superstore. You can interact with the helpful staff as well as having the opportunity of bumping into family and friends who are also ‘doing their bit’ in supporting their/our local community.



Supporting the LOCAL Shops and Businesses in your area



SPECIALISTS IN ALL ASPECTS OF ROOFING



New Roofs - Roof Repairs - Flat Roofing
Fascia, Soffits & Guttering - Cladding
Moss Removal Chimney / Ridge Tile Repointing
Local References Available - Free Quotations

For a FREE quote, contact the local company you can trust

Birmingham - 0121 667 8938
Redditch - 01527 906 586

*Park House, Bristol Rd South, Rednal,
Birmingham B45 9AH*
www.longbridgecladdingandroofingltd.co.uk
sales@longbridgecladdingandroofingltd.co.uk

JC GLAZING & REPAIRS LTD

A FRIENDLY, HONEST & RELIABLE SERVICE...

Have your double glazed units misted up?

Don't despair help is here!

WE CAN REPLACE THEM
Call us for a free quote



- Locks
- Hinges
- Mirrors
- Misted Glass
- Safety Glass
- Decorative Glass
- Cat Flaps in Glass
- Conservatory Repairs
- Fascias, Soffits & Guttering
- UPVC Windows, Doors & Conservatories
- Log Burner Glass Supplied

ALL WORK GUARANTEED



UPGRADE YOUR OLD U.P.V.C. WINDOWS

We can replace your existing glass with Energy Saving Glass & refurbish your frames at half the cost of new.



ANYTHING TO DO WITH GLASS & WINDOWS

A-RATED WINDOWS SUPPLIED & FITTED

Patio Doors French Doors
Front Doors Back Doors
Composite Doors

Card payments accepted 

Call Jon on 01527 857 786
or 07931 198 152



Can you give Pip and Posey their 'forever home' in time for Christmas?

Blue Cross driving homes for Christmas

A NUMBER of animals at Bromsgrove Blue Cross are hoping to find their forever home in time for Christmas.

The rehoming centre on Wildmoor Lane in Catshill, is appealing to people to come forward and take on some of its longer-standing residents.

Five-year-old Netherland Dwarf rabbits Pip and Posey have been in the care of the charity's team for more than 120 days and are looking for a home they can call their own this Christmas.

Claire Spiers, Bromsgrove Blue Cross' assistant manager, said the pair did not like being apart and often shared food and lay next to each other.

"Pip is a sweet boy who loves to play fetch with his toys, he's very smart and enjoys enrichment."

Ideally Pip will have a new home with a new family to continue encouraging his play.

Posey, currently in a foster home, can be a little shy initially but is growing in confidence - she enjoys playing and loves treats and her favourite is kale.

Claire added some flat-faced (brachycephalic) rabbit breeds may be more prone to associated health problems and dental issues that could impact quality of life.

The Blue Cross always recommends potential Netherland Dwarf adopters to thoroughly research the breed beforehand but said the charity's expert team can give advice on any support Pip and Posey may need.

Four gerbils - Rose, Daffodil, Tulip and Poppy - who arrived in August are also waiting for a new home. They have not received a single application.

Claire said: "Pets like Pip, Posey and our gerbils deserve to find the perfect family."

The Critical First Night Christmas appeal has been launched to ask for donations to help teams provide safety and comfort for vulnerable pets in its care.

Visit: bluecross.org.uk/christmasappeal for more on the Christmas appeal.

Fears over the finances

by Ashleigh Osborne
ashleigh.osborne@bullivantmedia.com

A REFORM UK councillor axed from his seat on Worcestershire County Council cabinet has said he was 'concerned' about the direction of his party locally.

Former deputy leader David Taylor, who represents Redditch East, was in charge of the reorganisation of the seven district and borough councils into a single local authority.

Coun Taylor said he was removed from the appointment panel shortly after advising the leader and deputy leader he could not support proposals to award additional payments to senior officers who already earned six-figure salaries.

In an email, seen by the Standard, he said: "While I respect the leader's authority to shape her cabinet as she sees fit, this is following six months of dedicated service and the almost continuous scrutiny I faced in the line of fire."

"Also, I must state, I remain increasingly concerned about the direction and leadership of Reform in Worcestershire."

"Over recent months, a number of fundamental policy disagreements have emerged between myself and the administration, particularly around governance, financial disci-

pline, and the transparency required at a time when the council is facing significant challenges."

He said he could not support the salary hike for officers at a time when Worcestershire County Council's financial position was so precarious.

He added: "I believe such decisions must be subject to the highest level of scrutiny and restraint."

"My position has always been consistent - our priority must be protecting essential services, maintaining public trust and ensuring that taxpayers' money is spent responsibly."

"I will continue to stand up for these principles and to speak out when I believe decisions are being taken that put them at risk."

Worcestershire County Council leader, Coun Joanne Monk, said: "As the council's proposal for One Worcestershire was submitted to government last month, it is now the right time for me, as leader of the council, to also take the lead on Local Government Reorganisation (LGR), in line with other Reform UK councils."

"The remaining elements of the LGR cabinet portfolio, which also covers corporate services, are insufficient to warrant a cabinet role."

"We have therefore made the decision to move these areas alongside the finance cabinet portfolio and remove the role of Cabinet Member with Responsibility for LGR from the structure."

Check out our E-Editions!



www.redditchstandard.co.uk/editions
www.bromsgrovestandard.co.uk/editions
www.droitwichstandard.co.uk/editions

The same paper you love on your **mobile, tablet and computer**



ROWBERRYS

The Growing Nursery, Farm Shop, Butchery, Deli and Restaurant

Christmas @ Rowberrys

OPEN 7 DAYS A WEEK

Mon-Wed: 8.30am-5.00pm

Thurs-Sat: 8.30am-5.30pm

Sunday: 8.30am-4.30pm

Lower Chaddesley Corbett,
Kidderminster DY10 4QN

Tel: **01562 777 003**

Home-Grown Poinsettia's
£5.99 each or 2 for £10



Home-Grown Cyclamen
XL £4.99 each,
mini £2.49 each or 5 for £10



**Premium low needle drop
Nordman Christmas
Trees.**



**Wide range of indoor plants and
planted baskets available**



**HOME GROWN
QUALITY
POTATOES**
PRICES FROM
£7.99 FOR 25KG



Rowberrys Farm Butchery,
Open 7 days a week
**Stocking English Lamb,
Beef & Pork. Fresh fish
available everyday.
Home-made sausages
galore.**
Turkey orders still being
taken.



Have you visited our new
Chocolate Counter?

Over 45 hand finished Belgian
chocolates including vegan,
vegetarian and reduced sugar.



**Only Cannoli available
@ Rowberry's**



Sweet smooth
fillings encased
in a toasted
waffle 6 flavours
available

**We have a wide choice of
Giftware available from
mugs to glasses, placemats,
coasters, cards and trinkets.**



**Don't forget to browse our
new Pet Foods section**

PCC hails funding to aid victims

THE MINISTRY of Justice has confirmed the Victims' Funding will continue over the next two financial years and increase by two per cent year-on-year for vital services commissioned by the police and crime commissioner (PCC).

Funding will continue to deliver the Victim Support Gateway – a free and confidential service for residents across West Mercia affected by crime – as well as specialist support for victims of domestic abuse and sexual violence.

PCC John Campion said: "Whilst two per cent is significantly below the current rate of inflation, this is a welcome uplift in funding as it will help make a real difference to victims and survivors of crime."

"I have long called for a multi-year agreement, so seeing those calls answered is a positive step."

"It provides providers with the certainty and stability they need to deliver the best possible service to help victims cope and recover."

WOW! What a fab way to get more women cycling

by Ashleigh Osborne
ashleigh.osborne@bullivantmedia.com

CYCLING club Women on Wheels (WOW) has been awarded a Public Health Community Grant to help expand its reach and impact.

With around 100 members, from 20 years old to 73, WOW is dedicated to encouraging even more women to enjoy cycling in a safe, supportive, and social environment.

The grant has enabled WOW to train additional volunteer ride leaders, ensuring safe and enjoyable rides across the county.

It will also support the expansion of the club's off-road cycling programme, offering 96 additional places for women of all abilities to build confidence, improve fitness, and enjoy the mental health benefits of cycling.

WOW group leader Sally Ellis said: "Cycling is one of the most effective ways to improve physical health, boost mental wellbeing, and reduce social isolation."

"WOW's ethos is to remove barriers to participation."

"Members frequently loan their own bikes, provide donated bicycles, or arrange hire options so that cost never prevents women from joining us."

"Free rides are offered throughout the week and weekends, catering to both working and non-working



Coun Satinder Bell with the Women on Wheel's group. s

women, with groups kept small to ensure safety and inclusivity.

"We have such fun on these rides and want to ensure more women can join in and feel the benefits."

Worcestershire County Council's cabinet member with responsibility for health and wellbeing, Councillor Satinder Bell, recently met up with

WOW before a ride in Snowshill, near Broadway.

Coun Bell said: "We are delighted to support Women on Wheels through our Public Health Community Grant programme."

"Cycling is a fantastic way to improve both physical and mental wellbeing, and WOW's commitment

to welcoming all types of riders and ensuring their safety means that no woman is excluded because of cost or confidence. Their work is helping women across Worcestershire feel healthier, happier, and more connected."

Visit women-on-wheels.co.uk/ for more information.



40 YEARS
of excellence!



For all your
FLOORING
NEEDS

Unit 4, Brockhill Works, Windsor Road, Redditch, B97 6DJ

Tel: 01527 61906 Email: info@windsorcarpets.com

Web: www.windsorcarpets.com

BYD ATTO 2

Boost

£325 DEPOSIT | £325 PER MONTH

0.5% APR



BYD DOLPHIN SURF

Active

£189 DEPOSIT | £189 PER MONTH

0% APR



BYD STOURBRIDGE

Envile Street, Stourbridge, DY8 1XW
sales@bydstourbridge.co.uk | 01384 438022

Web: www.bydstourbridge.co.uk



BYD KIDDERMINSTER

114 Worcester Road, Kidderminster DY10 1HU
sales@bydkidderminster.co.uk | 01562 312259

Web: www.bydkidderminster.co.uk



Retail Sales Only. Subject to availability at participating retailers only on vehicle orders from 08/10/2025 to 31/12/2025. 0% APR available on 49 month Personal Contract Purchase on all BYD Dolphin Surf Active. Retail Sales Only. Subject to availability at participating retailers only on vehicle orders from 08/10/2025 to 31/12/2025. 0.5% APR Representative available on 49 month Personal Contract Purchase on all BYD ATTO 2 Boost. Final Payment to own the vehicle, (i) Return the vehicle or (ii) Part exchange the vehicle where equity is available. Prices correct at the time of being published and are subject to change without notice. Further charges may be made subject to the condition or mileage of the vehicle. Finance subject to status. Terms and conditions apply. Applicants must be 18 or over. Guarantee may be required. Santander Consumer Finance RH1 1SR.

BYD ATTO 2

Boost

£325 DEPOSIT | £325 PER MONTH

0.5% APR



BYD DOLPHIN SURF

Active

£189 DEPOSIT | £189 PER MONTH

0% APR



BYD STOURBRIDGE

Envile Street, Stourbridge, DY8 1XW
sales@bydstourbridge.co.uk | 01384 438022

Web: www.bydstourbridge.co.uk



BYD KIDDERMINSTER

114 Worcester Road, Kidderminster DY10 1HU
sales@bydkidderminster.co.uk | 01562 312259

Web: www.bydkidderminster.co.uk



Retail Sales Only. Subject to availability at participating retailers only on vehicle orders from 08/10/2025 to 31/12/2025. 0% APR available on 49 month Personal Contract Purchase on all BYD Dolphin Surf Active. Retail Sales Only. Subject to availability at participating retailers only on vehicle orders from 08/10/2025 to 31/12/2025. 0.5% APR Representative available on 49 month Personal Contract Purchase on all BYD ATTO 2 Boost. Final Payment to own the vehicle, (i) Return the vehicle or (ii) Part exchange the vehicle where equity is available. Prices correct at the time of being published and are subject to change without notice. Further charges may be made subject to the condition or mileage of the vehicle. Finance subject to status. Terms and conditions apply. Applicants must be 18 or over. Guarantee may be required. Santander Consumer Finance RH1 1SR.



Learn from yesterday,
live for today,
hope for tomorrow.
Anonymous



Family Notices

Tel: 01527 588688 Email: reception@bullivantmedia.com

DEATHS

TURNER Barbara

Aged 90 Years
Passed away peacefully on
Sunday 30th November 2025
A much-loved Mum to Michael and Paul.
Barbara will be greatly missed by all her
family and friends.
A service to celebrate Barbara's life will take
place at Studley Parish Church On
Monday 22nd December at 10am
Family flowers only please donations if
desired to Alzheimer's &
Cancer Research UK to
Thomas Brothers, Birchfield House,
494 Evesham Road,
Redditch, B97 5JF
01527 547777
Thank you

If you have a message for a
loved one, give our team a call



01527 588688

FUNERAL DIRECTORS

Huntleys Funeral Services

Over 140 years of service to families in Redditch

Basic funeral £2,450* (excl. third party fees).
A funeral service for your loved one that's at an affordable
price, but without any compromise on the care we provide.

01527 906 553

58 Ipsley Street, Smallwood B98 7AE

Call us 24 hours a day for support, help and advice,
or to find out more about our prepaid funeral plans.

* Limited choice of date and time for service and commital,
excluding cremation fees. Terms and conditions apply
- please ask us for details.

www.huntleysfunerals.co.uk



If you have a
message for a
loved one, call our
team on
01527 588688



MEMORIAL SERVICES

As Time Goes By

YOUR LOCAL FAMILY RUN
MEMORIAL SUPPLIER

Headstones, Cremation Tablets,
Additional Inscriptions and
Renovation Work

Web: www.astimegoesby.org.uk
Email: kpporter@blueyonder.co.uk

Please call 01527 550505

To arrange a home visit or to find out our opening times

Unit 5, Dunlop Road, Hunt End Industrial Estate
Redditch B97 5XP

"MEMORIALS THAT REFLECT A LIFETIME"



FLORAL TRIBUTES

TNS

THE NURSERY SHOP

519 Evesham Road,
Crabbs Cross,
Redditch, B97 5JP

Bespoke funeral flowers personally
designed for your loved one

flowers@nurseryshopredditch.co.uk

www.nurseryshopredditch.co.uk

Tel: 01527 550 700



FUNERAL DIRECTORS



James Giles and Sons Ltd

Est. 1916

The Complete
Funeral Directors

Allow our family
to care for your family

www.jamesgilesandsonsltd.co.uk



BROMSGROVE
01527 872318

DROITWICH
01905 783188

STUDLEY
01527 852213

PRE-PAID
FUNERAL PLANS
AVAILABLE



An Independent Family Owned Funeral Directors



THOMAS BROTHERS

Family owned funeral homes in Redditch, Wythall, Alvechurch, Bromsgrove & Alcester.
We provide a friendly, dignified service paying special attention to detail.

REDDITCH • BROMSGROVE
01527 547777 01527 831700

WYTHALL • ALVECHURCH • ALCESTER
01564 822001 0121 445 3422 01789 330939

"A family concern"

www.thomasbrothers.co.uk
email: admin@thomasbrothers.co.uk





Learn from yesterday,
live for today,
hope for tomorrow.
Anonymous



Tel: 01527 588688 Email: reception@bullivantmedia.com

Family Notices

FUNERAL DIRECTORS



Say goodbye your way

Reassure your loved ones that your funeral is the one you wanted — not the one they hoped you wanted. Choose from a fully prepaid plan or simply record your wishes with no upfront payment.

Arrange an appointment today

0121 459 9111

Offices in Northfield, Cotteridge and Rubery



Professionally qualified independent funeral directors
For more information, visit mortonsfunerals.co.uk



FUNERAL DIRECTORS

R.L. Rea Funeral Directors Ltd



Create the perfect Funeral for your loved one

R L Rea Funeral Directors Ltd
Complete Funeral Directors and
Memorial Masons



- * Independent Funeral Directors in Bromsgrove, established in 1967
- * 24 Hour Personal Service
- * Private Chapel of Rest
- * Pre-arranged Funeral Plan with Perfect Choice.
- * We offer a Professional, Friendly and Caring Service.

www.rlreafuneraldirectorsltd.co.uk

T: 01527 831723

info@rlreafuneraldirectorsltd.co.uk

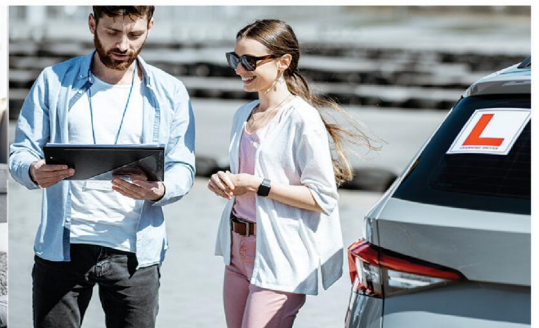
17 Rock Hill, Bromsgrove, Worcs B61 7LL

Losing someone, whatever the circumstances and whatever age they may be, is never easy and affects different people in different ways. But there are people and companies just a visit or phone call away who can offer guidance – whether it be with arranging the funeral itself or helping you come to terms with what has happened.



Whatever the occasion, why not send your loved ones a message....

Call our team on **01527 588688**



Classified

www.directory247.co.uk

TELEPHONE 01527 588688 FACSIMILE 01527 584371

PUBLIC NOTICES

PUBLIC NOTICES

BROMSGROVE DISTRICT COUNCIL & REDDITCH BOROUGH COUNCIL

Advertisement Key: FP = Affects Footpath, MAJ = Major Development.

25/01400/OUT MAJ FP
Site: Land At Houndsfield Lane, Houndsfield Lane, Hollywood, Worcestershire

Proposal: Outline planning application for residential development of up to 44 dwellings, together with public open space, landscaping, sustainable drainage, and other associated works (all matters reserved apart from access).

Application forms and plans may be inspected online <https://publicaccess.bromsgroveandredditch.gov.uk/online-applications>

Comments can be submitted online, via email to newplan@bromsgroveandredditch.gov.uk or in writing Planning Services, Redditch Town Hall, Walter Stranz Square, Redditch, B98 8AH

Comments should be made within 17 days of the date of this publication. The Council does not acknowledge comments but will make these available for inspection online.

PUBLIC NOTICES

Goods Vehicle Operator's Licence

Midland (TW MPF PSM) Group Limited of Transport Yard, Cold Comfort Lane, Ragley Hall Estate, Alcester B49 5PT is applying for a licence to use Transport Yard, Cold Comfort Lane, Ragley Hall Estate, Alcester B49 5PT as an operating centre for 10 goods vehicles and 10 trailers.

Owners or occupiers of land (including buildings) near the operating centres who believe that their use or enjoyment of that land would be affected, should make written representations to the Traffic Commissioner at Quarry House, Quarry Hill, Leeds, LS2 7UE stating their reasons, within 21 days of this notice. Representatives must at the same time send a copy of their representations to the applicant at the address given at the top of this notice. A Guide to Making Representations is available at: www.gov.uk/government/publications/a-guide-to-making-representations-objections-and-complaints-goods-vehicle-operator-licensing.

BROMSGROVE DISTRICT COUNCIL & REDDITCH BOROUGH COUNCIL

Advertisement Key: MAJ = Major Development.

25/01254/FUL MAJ
Site: Four Winds, Birmingham Road, Mappleborough Green, Redditch, B80 7DH

Proposal: Demolition of all existing buildings and erection of a two-storey, 66-bedroom care home for older people (Use Class C2), with associated access to Birmingham Road, parking, open space, landscaping and ancillary buildings (cross-boundary application with Stratford-on-Avon District Council).

Application forms and plans may be inspected online <https://publicaccess.bromsgroveandredditch.gov.uk/online-applications>

Comments can be submitted online, via email to newplan@bromsgroveandredditch.gov.uk or in writing Planning Services, Redditch Town Hall, Walter Stranz Square, Redditch, B98 8AH

Comments should be made within 17 days of the date of this publication. The Council does not acknowledge comments but will make these available for inspection online.

Goods Vehicle Operator's Licence

Vertex Displays Ltd of Unit 4a Springside, Howard Road, Redditch, Worcestershire, United Kingdom, B98 7SE is applying for a licence to use Unit 4a Springside, Howard Road, Redditch, Worcestershire, United Kingdom, B98 7SE as an operating centre for 2 goods vehicles and 0 trailers.

Owners or occupiers of land (including buildings) near the operating centres who believe that their use or enjoyment of that land would be affected, should make written representations to the Traffic Commissioner at Quarry House, Quarry Hill, Leeds, LS2 7UE stating their reasons, within 21 days of this notice. Representatives must at the same time send a copy of their representations to the applicant at the address given at the top of this notice. A Guide to Making Representations is available at: www.gov.uk/government/publications/a-guide-to-making-representations-objections-and-complaints-goods-vehicle-operator-licensing.

PUBLIC NOTICES

Warwickshire County Council

ROAD TRAFFIC REGULATION ACT 1984
Warwickshire County Council has made the following Temporary Traffic Orders:

D5436 CHURCH LANE, HASELOR
Order Effect: Road closed to vehicular traffic on the junction of Pelham Lane.

Reason for Order: Carriageway patching and associated works, 08.00hrs-16.00hrs.
Order Commences: 17 December 2025 for up to 18 months.
Anticipated Completion: 17 December 2025.
Access & Diversion: No diversion required.
Contractor: Balfour Beatty, Tel: 03452 415 302.

For all of the above temporary orders, pedestrian access to and egress from properties and land situated adjacent to the length of road to be closed will be maintained at all times. Vehicular access will be maintained where possible.

To report any problems with these works or for further details of our current & planned roadworks visit our website warwickshire.gov.uk/roadworksmap or call us 01926 412515.

S Duxbury, Director of Strategy, Planning & Governance, Shire Hall, Warwick CV34 4RL Date 12 Dec 2025

PUBLIC NOTICES

BETTY IRENE DAVIES

Deceased
Pursuant to the Trustee Act 1925 anyone with a claim against or an interest in the Estate of the deceased, late of 89 Crofters Close, Droitwich, Worcestershire, WR9 9HT, who died on 28/04/2025, must send written details to the address below by 13/02/2026, after which the Estate will be distributed with regard only to claims and interests notified.

Talbots Law, 25-27 Hagley Road, Stourbridge, D8 1QH. Ref:GGUE334623-0001

PUBLIC NOTICES

Keeping you up to date with all the latest information on Planning Proposals, Traffic Notices, Goods Vehicle Operator Licences, Licences To Sell Alcohol, Probate Notices....

MISCELLANEOUS

BEDS NEW Doubles £95 Singles £59 King size £159. Second hand doubles £49 Singles £29 Fridges £49 Freezers £59 Can deliver 07703 925662

FREE TO COLLECTOR JUMBLE
2 large bags of men's clothes and bedding
01527 526898

RECLINER CHAIR electric rise & recline £169 Manual recline chair £60 High seated chair £40 Can deliver 07703 925662

MISCELLANEOUS

REMOTE Control Boat £30 07780511800

MINI Scalextric £15 07780511800

CRYSTAL drinks decanter and 2 whisky glasses. Glasses have never been used. Excellent condition £12. Tel 01527 500217

FIVE Minton Bellemeade salad plates (8") blue flowers, bone china, very good clean condition. £3.00 for all. Tel: 07934132759

MISCELLANEOUS

ELEGANT classic 3 seater sofa, 2 arm chairs with large storage footstool. Raspberry / gold still has years of wear. Excellent condition. £350. Tel 01527 500217

THIS England magazine 1970s-1980s. 40 bound copies. Fascinating read. £25. 01527 873674

80 Matchbox Yesteryear models and 20 Lledo etc. Vgc. £250. 01527 873674

60 VHS video tapes. Films, trains, motorbikes etc. £20. 01527 873674

WEISE leather top quality motorcycle jacket, medium, vgc. £50. 01527 873674

6 Genuine Oral-B Precision Clean replacement Brush Heads (for Oral-B Rotating Toothbrushes) £8 01527853345

9 Square Ceramic Beige Daisy Tiles 4 x 4" Craftwork / Coasters Etc £6 01527853345

8.5METRES x 3mm White Blind / Curtain / Light Pull Cord £3 01527853345

MISCELLANEOUS

DELIA Winter Recipes Hardback Book As New Condition £5 01527853345

NEW Clarks Cica C-SHX Combo Suede Trainer Size 5F £15 01527853345

READERS Digest Creative Cooking & Entertaining Hardback Book £6 01527853345

100% Luxury Wool Green Carpet Runner 64" x 25" Whipped Edge Remnant £15 01527853345

XMAS Card Making Rubber Stamps, Positioner, Card Stock Etc Bundle £15 01527853345

HOBBYCRAFT Light Box For Crafting, Tracing, Drawing, Card Making 14 x 23cm £12 01527853345

11 Clear Glass Jars 200g With Gold Lids £5 01527853345

38 Empty Egg Boxes For 6 Eggs £3 01527853345

6 Airtight Clear Glass Storage Jars 190G Empty Coffee Jars £5 01527853345

CASIO full size light up keyboard. As new boxed. £50 07758716568

MISCELLANEOUS

2 x Brand new single 90cm child's mattress, rolled wrapped medium, £50 each 07758716568

SMART wonder core machine for workouts Nearly new £20 07811 002531

YORK fitness stepper £30 07811 002531

PETROL lawnmower VGVOW Briggs and Stratton engine £100 ONO Studley 07757325425

DOUBLE bed with extra double mattress fire safety labelled £40 ONO Studley 07757325425

SOLID Oak Bed Head £30 ONO Studley 07757325425

ANTIQUE American style rocker chair Pale green velvet seat pad Medium brown wood £90 ONO Studley 07757325425

SMOKED Glass Table, Chrome Television Unit (fits large TV) Coffee Table, Small Table All contents £40 07704695275

LEGO Notre-dam De Paris Set £75 Built once, very carefully deconstructed into correctly numbered bags No pieces missing 07837727454

MISCELLANEOUS

MOUNTAINS bike levers 1lbs and rhs£5 good quality brand new used 07977913225

CLEAR Glass splash back w895 x h705 new £35ono Tel 07966 195097

FLAT screen Samsung white 32" TV. good working order £ 40 07966 195097

FLAT screen Bush 32" TV. good working order £ 40 195097

FLAT screen Samsung 26" TV. good working order £ 40 07966 195097

LAPTOP Toshiba good working order £45ono 07966 195097

LAPTOP HP good working order £45 ono 07966 195097

ELECTRIC Storage Heater 24 inches high £160 ono 07927418770

MISCELLANEOUS

BROTHER MFC 9900CW cordless phone / fax / a-m / printer / copier Samsung £100 onvo 07966 195097

PHILLIP 525 phone / fax machine £30 07966 195097

LANEY LA65D guitar amplifier £50 ono 07966 195097

METAL 3draw filing cabinet w / key w81cm x h100 x d48 £20ono 07966 195097

RILEY 1.5 grill excellent condition £50 all offers welcome 0121 744 7579

BOXED as new lightning strike scooter aged 5+ £10 0121 744 7579

COFFEE Machine Nescafe Dulce Gusto With coffee pods £20 07743929558

WANTED

****WANTED: Vinyl Records CDs Cassettes**
Vintage or New**
Seeking classic rock, jazz, indie and rare finds. Cash paid
Call or text: 07765 142354 Or 01527 893992
Or email: welston@live.com
Paul (Albatross & Doomed Records)

3 PIECE SUITE brown leather, perfect condition as new
£550 can deliver
Telephone 10234 567890

(£5.75 incVAT example boxed advertisement)

SOMETHING to sell?

You Can Raise Some Extra Cash and make someone else's Day

By SELLING Your Wonderful but Unwanted Gifts or Private Items

Simply by advertising them in The **Observer** or **Standard**

And...if your item is valued at £500 or less - its FREE of charge in lineage (max 15 words)

But if you want your advertisement to really stand out or if your item is valued at over £500, you can place details in a boxed advertisement for just £5.75 (inc Vat)

Simply fill in the coupon below, tick the appropriate box, enclose your cheque or credit card details if required, and we'll do the rest - Or alternatively email your free ad to; freeads@bullivantmedia.com

Free Lineage (Items upto value £500) Paid for Boxed Ad (Items of any value)

Details of Item For Sale for Publication (No Pets or Livestock or Firearms please): (MAX 15 WORDS)

.....Telephone Number.....

Details (Not for Publication):
Mr/Ms/Ms..... Initials..... Surname.....
Address.....
Postcode..... Telephone..... Mobile.....
Email address.....
I enclose cheque, payable to Bullivant Media Ltd, value £.....
or alternatively
Please debit my card for £..... Visa/Mastercard/Maestro/Debit
Credit Card Number..... Start Date..... Security Number..... (Last 3 digits) Issue Number..... (if applicable)
Exp Date.....
Send to Bullivant Media, Webb House, Church Green East, Redditch, Worcestershire. B98 8BP
or email your advertisement to freeads@bullivantmedia.com

Classified

www.directory247.co.uk

TELEPHONE 01527 588688 FACSIMILE 01527 584371

SERVICES

BUILDERS

BRICKWORK H.BOOT

All Types
Garages
Garden Walls
Extensions
Fully Qualified Tradesman
Call

07778 705570
07789 064138

WhatsApp Email: hanstheboot@hotmail.com

CARPENTRY/ JOINERY



AJB CARPENTRY

EXCEPTIONAL SERVICE
AND QUALITY WORKMANSHIP
Covering: kitchen fitting, roofs, doors,
stairs and much more to help with
your carpentry based home
improvements.

Call today for your free quote!

Call Ant on
07827 324754

AJB Carpentry

DECORATING & PAINTING

C&M Decorators

Father and Son • Interior and Exterior
32 yrs experience • Fully Insured
Tel **01527 576136**
Mob **07850 380162**

FENCING

FENCING & FENCE REPAIRS

All types undertaken
20yrs exp.
No JOB TOO SMALL
Contact Daryl
01527 526990 • 07847 898079
For a free quote

GARDENING SERVICES

JFS Garden Services

Fencing, Turfing, Hedge Cutting, Tree Surgery,
Stump Grinding, Jungles Cleared,
Grass Cutting/Regular Mowing.
Domestic, Commercial enquiries welcome.
For a free Competitive Quote
07977 497 440 • 01527 458 104
www.jfslandscapes.co.uk

HAIRDRESSERS

Hair by Sharon

in the comfort of your own home
Care Home Visits Available



Over 20 years
experience

310A Birchfield Road,
Webheath,
Worcestershire

07772994654

sharon_campion@yahoo.com

KITCHENS

S.W INSTALLATIONS

Kitchens & Bathrooms

FREE DESIGN &
QUOTATION

QUALITY KITCHENS
& BATHROOMS
SUPPLIED & FITTED

PLUMBING,
CARPENTRY, TILING,
WORKTOP & DOOR
REPLACEMENT

(Supply & fit, supply only or fit only)

LOCAL TRADESMAN
20YRS EXPERIENCE

NO JOB TOO SMALL

07971 684 353

LANDSCAPING

D.A. TAYLOR

LANDSCAPING
Fencing • Slabbing • Conifers
Hedge Work

CLEARANCE
Gardens • Rubbish • Sheds • Large
& Small Trees Felled, Lopped and
Shaped • Turfing • Shed Base

FREE QUOTATIONS

01527 870914 - 0771 768 2816

PLASTERING

LCJ PLASTERING SERVICES

General Property
Maintenance

All Aspects of Plastering
30 Years Exp

Call Craig Berrows
0777 1875865

PLUMBING

SB 4 Plumbing & Heating

- Gas Fires
- Gas Cookers
- Gas Central Heating and Maintenance.
- Gas Appliance Landlord/home
- Safety Checks.
- Plumbing faults/installation.

Email: stuart4heating@gmail.com

www.sb4plumbing.co.uk

Call me for domestic work

MOBILE

07951 485 329



REMOVALS/ STORAGE

MAN WITH A VAN REMOVALS

House moves local & long distance
Collection and delivery
Single items to full van loads
House Clearances
Collection of unwanted household items
Waste Carrier No: CB0U69835

T:01527 514 666 M:07843 854 289
ManWithaVanRemovalsRedditch.co.uk



WANT A JOB WELL DONE?

Check out our
Classified pages!
KEEP IT LOCAL!

ROOFING

WEATHER GUARD ROOFING PROFESSIONALS

10% OFF
ALL ROOFING
REPAIRS

No job too big or
too small
Fully guaranteed
and insured
Written quotes
available

Specialists in all types of Roofing,
Complete Roofs, Ridge Tiles,
Lead Work, Chimneys, Fascias,
Soffits, Guttering, Gutter Cleaning



Mobile: **07467 159012**
Office: **01527 962 972**

info@weatherguardservices.co.uk
weatherguardservices.co.uk

ROOFING

POWELLS ROOFERS & BUILDING SERVICES

- Roof Tiling • Garage Roofs • Flat Roofs
- Chimneys rebuilt and re-pointed
- Garage Conversions • Driveways
- Building Maintenance • Extensions

Powells Roofing & Building Services are a local
Redditch based company

C&G Qualified with over 15 years local roofing and
building services experience

For more details, please call
07952 797 973 or 01527 454325

SKIP HIRE

A&S SKIPS

A Division of A&S Developments (Redditch) LTD

- 2, 4 & 7 yard skips
- Skips with drop front doors guaranteed
- Prompt and reliable service
- Competitive rates

Tel **01527 459 238** • Mob **07788 112028**

www.asskips.co.uk

Waste carrier No. CB0U 169 207

Redditch Skip Hire Ltd

For all your domestic and
commercial skip requirements



4-40 yard skips available • Drop fronts -
please ask when ordering
Open or enclosed 90% of waste recycled



- No room for a skip.
Book our man with a van
service
- Prompt, reliable service
- 2 hour arrival slot
- Next day service

Call **01527 63644**

Or visit us at:
www.redditchskiphire.com

Waste Carrier No. CB0U122354

TREE SURGEONS

Call today to book a 20% discount

TREE & LANDSCAPE Specialists

Tree & Landscape Specialists is a trusted, professional company with
a great reputation to uphold and have over 20 years experience in the trade.

- Tree Work • Paving • Fencing • Artificial Grass • Astro Turf • Patios

No job is too big or too small • Fully Insured



Contact us today FREEPHONE: 0800 747 1704 • LANDLINE: 01527 906 577
treeandlandscapespecialists@gmail.com
www.treeandlandscapespecialists.co.uk

PHOTO BY Google



Motoring

www.carfinder247.co.uk

TELEPHONE 01527 588688 FACSIMILE 01527 584371



THE all-new Mazda CX-5 has secured the maximum five-star rating in the latest Euro NCAP tests. This outstanding result includes a 90 per cent score for Adult Occupant protection, 89 per cent for Child Occupant protection, 93 per cent for Vulnerable Road Users, and 83 per cent for Safety Assist systems. By keeping kind eyes on the driver, Mazda's innovative technology ensures greater safety, peace of mind, and driving enjoyment for everyone.

For the 90 per cent Adult Occupancy score, the passenger compartment remained stable in the frontal offset test, with good knee and femur protection.

Protection across critical body areas was rated good or adequate, with strong results in the full-width rigid and side barrier tests.

In the demanding side pole impact, protection remained adequate.

Far-side performance benefited from strong occupant movement control and a well-performing far-side airbag. Whiplash protection was excellent front and rear, supported by advanced eCall, secondary collision mitigation, and proven door and window operability in case of submersion.

The CX-5 achieved an 89 per cent Child Occupant score, earning maximum points for both the 6- and 10-year-old dummies in frontal offset and side barrier tests. Automatic passenger airbag deactivation ensures safe compatibility with a wide range of child restraint systems (CRS).

An indirect child presence alert is included, and all approved CRS could be securely installed.

For Vulnerable Road Users, the all-new CX-5 showed good or adequate head-impact performance and maximum scores for lower-body protection. Its autonomous emergency

braking (AEB) system detects pedestrians and cyclists -including those approaching from behind- and performed exceptionally well in reversing and "dooring" scenarios.

The model also achieved full points for motorcyclist protection, all resulting in a 93 per cent rating in this category.

The CX-5's comprehensive suite of Advanced Driver Assistance Systems (ADAS) supported its 83 per cent Safety Assist rating.

The AEB reacted effectively to other vehicles, while standard seatbelt reminders and direct driver monitoring improve everyday safety.

The lane support system gently corrects unintentional lane departure. This makes it an ideal choice for families, city explorers, and outdoor enthusiasts alike.

Through these innovative advancements, Mazda empowers drivers of all ages to travel with confidence supporting greater freedom.

Martin Floyd Motor Services

45 years experience locally

- All Aspects of Motor Servicing
- Repairs • Diagnostics
- MOTs @£50 (plus a free retest)
- Brakes • Clutches • Cam Belts

SAFE DRIVING THIS WINTER

Competitive Prices

“...and a few comments from very satisfied customers:
*Such Helpful and Friendly service...
 Kate and Martin were really accommodating in working around my work commitments
 Polite and fast service, and... good price
 Will return and recommend to friends - Thanks*”

Martin Floyd Motor Services



Units 4 & 5, Woodrow Farm,
 Woodrow Lane, Catshill,
 Bromsgrove, B61 0PL



TO BOOK CALL 0121 453 7667

WANTED

THE VERY BEST CARS & VANS

WE PAY MORE FOR LOW MILES,
 LOW OWNER &
 FULL SERVICE HISTORY

PLEASE CALL DOMINIC
 07581 566064

HAGLEY CARS

EST. 40 YEARS

USED CARS WANTED TOP PRICES PAID!

Older cars considered.
 We can visit you and pay on the spot.

ALAN REED CARS (1976) LTD
 07831 245 313

Dragonfly
GARDENING
Specialists in plant care and pruning
Your local expert plantsman
CRB CHECKED • FULLY INSURED
07814 510797 | 01527 878965
Reliable Friendly Service
Garden Clearance Undertaken

Standard SPORT



9 772040 128006
Published by Bullivant Media Group Ltd, Webb House,
Church Green East, Redditch, Worcestershire B98 8BP
Printed by Newsquest, Newspaper House, Osney Mead,
Oxford, Oxfordshire OX2 0EJ

LANDMARK
LANDSCAPING & DRIVEWAYS
FREEPHONE 0800 191 0282
www.landmarkdriveways.co.uk
Honey Orchard, Doverdale, Droitwich, WR9 0QB
• Block Paving • Patio's • Slabbing • Driveways
• Tarmacadam • Brickwork • Turfing • Graveling
• Resin Bond • Paths • Forecourts • Fencing
All Work Guaranteed for 5 Years - No Deposit Required


www.droitwichstandard.co.uk/sport BRINGING YOU ALL THE LATEST SPORTS NEWS AND VIEWS FROM THE AREA

Spa stun Fairford at the death as Crowther reaches milestone

by **Aaron Sutcliffe**
aaron.sutcliffe@bullivantmedia.com

FOOTBALL: ANDY Crowther marked his 200th game in charge of Droitwich Spa with a dramatic 3-2 come-from-behind win at Fairford Town.

An injury-time goal from Nathan Binner completed the turnaround for Spa at Cinder Lane.

Goals from Luke Hitchman and Adam Corcoran put Fairford in command shortly after half time.

However, Alex Dugmore quickly halved the deficit and drew Spa level later in the second period before substitute Binner scored the winner for the visitors at the death.

And the result means Droitwich sit third in the Hellenic League Premier Division table, three points behind leaders Roman Glass St George with two games in hand.

The Saltmen made the worst possible start as Fairford took the lead after just six minutes when Hitchman provided the decisive touch to a frantic goalmouth scramble.

Spa looked to respond almost immediately when Josh Hurdman delivered a deep cross into the box as Leroy Odiero prevented a waiting Perry Moss from reaching the ball.

The home side almost doubled their lead as Droitwich goalkeeper Joe Stockton palmed Marcel Lewis's 20-yard effort to safety. Spa defender Jack Brighton went

close at the other end as Fairford goalkeeper Connor Johns tipped his 30-yard effort over the crossbar with the Droitwich full-back making his 200th appearance for the club.

The hosts spurned a golden chance to make it two when Odiero sent a close-range header wide of the target.

The visitors went close to an equaliser before the break as Brighton saw his effort from 20-yards out travel through a crowd of bodies and narrowly wide.

However, Fairford struck again three minutes into the second half when Corcoran prodded home from a corner from three-yards out.

Crowther's men responded less than a minute later as Dugmore turned home Brighton's low cross from close range.

And Dugmore came within inches of drawing Spa level later in the second half when he rounded the goalkeeper and saw his shot cleared off the line by Hitchman.

However, Dugmore found the net again for Spa on 65 minutes as he powered a header into the net from a corner to draw the visitors level.

Fairford almost reclaimed the lead moments later as a header hit the post and bounced to safety before Droitwich cleared their lines.

And Spa snatched the points in injury time when Binner produced a clinical finish from Cory Rudd's through ball.

Droitwich are next in action against Tuffley Rovers in the Marsh Challenge Cup on Saturday, December 13 with kick-off at 3pm at Glevum Park.



Nathan Binner celebrates after scoring an injury-time winner. Picture by Mathew Mason.

Yokohama
Authorised
Tyre
Dealer



JEFFERIES
TYRES
Est 1988



TRADE TYRE PRICES TO
THE PUBLIC

OVER 3,000 NEW & PART USED TYRES IN STOCK
Serving Trade & Public for over 35 Years
Alloy Refurbishment & Alloy Repair Service
Hunter Alignment & Wheel Balancing Available
01527 831829
Unit 4 - 22 Sherwood Road - Bromsgrove - B60 3DR



EDWARDS CAR REPAIRS

- Engine tuning
- MOT preparation and submission for final MOT
- Cam belt replacement
- Clutch Replacement
- General repairs
- Welding
- Servicing
- Insurance work welcome
- Supply and fit all parts for all makes & models

All types of work undertaken, why not give us a call or just drop in



Rear of 8 Hewell Road, Barnt Green, Birmingham, B45 8NE
0121 445 5414
Email - enquiries@edwardsrepair.co.uk