

# DROITWICH Standard

**TREE & LANDSCAPE Specialists**  
 Contact us today  
**FREEPHONE: 0800 747 1704**  
**LANDLINE: 01905 886 566**  
 treeandlandscapespecialists@gmail.com  
 www.treeandlandscapespecialists.co.uk

Friday, April 17th 2026 Week 16

[f droitwichstandard](https://www.facebook.com/droitwichstandard)

[www.droitwichstandard.co.uk](http://www.droitwichstandard.co.uk)

[@DroitStand](https://twitter.com/DroitStand)

Your **FREE** edition - just pick one up and keep up with the news



**MOT TEST CENTRE**

**THE HOME OF CLASS 4 MOT'S IN DROITWICH**

**Berry Hill MOT Centre Ltd**

Unit 8 Northbank Berry Hill Ind Est  
 Droitwich WR9 9AU Tel: 01905 771831

**Professional DPF Reconditioning**



Diesel Particulate Filter

# Council turns on the cash taps for leisure

by **Tristan Harris**  
 tristan.harris@bullivantmedia.com

**AN ADDITIONAL** budget of **£7.4million**, to complete a package of leisure projects for Droitwich Spa, has been agreed by Wychavon District Council.

At the full council meeting on Wednesday, members voted unanimously to approve the extra cash from the authority's reserves, providing a total capital budget of **£12.5million** for projects in the current financial year.

The funding will complete redevelopment of Droitwich Spa Lido plus work on the car park.

Improvements will include a spa and brine pool which has been long-awaited since Droitwich Brine Baths closed, in 2008.

Other work includes refurbished changing rooms; a new entrance to improve connectivity to the town; a cafe extension, to provide more food and drink space; and a fresh water play area in the curtilage of the Lido, to complement the new splash pad in the Lido Park.

The 'package of leisure projects' will also include a new Droitwich Spa BMX pump track



An additional £7.4million has been found, to fund improvements, including at Droitwich Spa Lido.

and skate park, on King George's Playing Field.

An additional **£177,000** for that, from the district's reserves, was also rubber-stamped at the meeting on Wednesday, providing a total capital budget of **£602,000** for the facility.

The council also agreed **£10,000** be added to the current revenue parks budget, to fund litter picking, utility bills, grass-cutting and repairs and maintenance.

Wychavon District Council leader, councillor Richard Morris, said: "Droitwich Spa Lido is considered one of the best in the country."

"When the public was consulted about the town prospectus, respondents rated the lido as the area they were most proud of, following the fight to get it reopened, in 2007."

"The Droitwich place board carried out terrific work taking

this forward, which has not been an easy journey."

Coun Morris said the brine pool would be a good addition, along with the changing room upgrades, which would help sustain the lido for years to come.

He added, amid plans for the unitary-authority local government reorganisation, the council needed to 'get going' and deliver on the vision and the plan it consulted on.

He thanked everyone involved, including the place board, Wychavon's economic team and deputy chief executive Jane Pickering and community development manager, Jem Teal.

The projects were welcomed by councillors, who highlighted the fact the lido is now open all year round and the growing popularity and importance of people spending more of their leisure time outside.



**Avery** | Droitwich Mews  
CARE HOME

## Memory Café

3<sup>rd</sup> Thursday of Every Month | 2pm - 4pm

Meet new people and join us for complimentary refreshments and pastries. All are welcome no booking required!

☎ 01905 958716 [averyhealthcare.co.uk](http://averyhealthcare.co.uk)

Mulberry Tree Hill | Droitwich Spa  
Worcestershire | WR9 7SS

## SUPERVALUE FURNITURE & BED CENTRE

YOUR LOCAL DROITWICH INDEPENDENT TRADER

# MASSIVE SAVINGS THROUGHOUT STORE



**HYPNOS**  
SPRING SALE  
KING SIZE FOR THE PRICE OF A DOUBLE



**MAMMOTH**  
RISER RECLINERS OFFERS IN STORE  
UP TO 30% OFF



**SHERBORNE**  
The Best of British  
RISER RECLINERS OFFERS IN STORE



**MAMMOTH**  
Recommened by the health professionals  
NHS award winners  
Medical grade foam  
Scientificallly tested and shown to improve sleep

**SEE OUR MAIN ADVERT ON PAGES 10 & 11**

Reimagine retirement living at Solihull Village ➔ See page 5 to find out more



Sonia Tudor is urging people to take part in the Wythall and Hollywood Fun Run. s

# Reap the rewards of running, says Sonia

A REDDITCH woman who undertook her first London Marathon in memory of her dad is urging everyone to take part in the Wythall and Hollywood Fun Run.

Sonia Tudor used to run 5K two or three times week with her dad Calvin and it became important time they spent together.

Then, in 2010, he was diagnosed with cancer and then lost his battle with the disease.

Sonia moved into her parents' house - her mum had passed away eight years before him - both very young at 50 and 58.

When her dad died, Sonia stopped running as it did not feel right going without him and then all that changed.

"Whilst sorting some cupboards out one day, I found a tiny black diary in which my dad had written a bucket list.

"On this list was to run a half-marathon and the London Marathon."

Sonia dug out her running shoes and became determined to run the London Marathon for him.

In a twist of fate, after getting a place from Macmillan Cancer Support - a charity she had volunteered with for 24 years - the race was on his birthday.

She said: "I cried for the whole 26.2

miles I was proud to wear my MacMillan shirt and carry the names on my back of all those I've loved and lost to cancer.

"I always ran by myself, music in my ears, depending on my mood.

"Sometimes motown classics, even musicals I'd watched with my mum."

Then a couple of friends nagged her to join a running club - she tried it and loved it.

Then, with a public health grant, Sonia qualified to be an England Athletics Leadership in Running Fitness (LIRF) coach. With some friends, she set up another running group with Run Together and became a mentor for new LIRFs.

Sonia leads the Couch to 5K programme for Redditch Borough Council. New sessions begin on Monday, April 20.

She said: "It's so rewarding to be a part of so many people's running stories - it's a huge honour.

"I am passionate about running it's so good for mind, body and soul.

"It's my time, my head space and the chats, the laughs and the friends we meet along the way - it is so heartwarming.

"Our running community is so supportive, so special. I'm so proud to be a part of it.

"I have many running stories and moments and many more to come."

She said the two which meant the world

to her included crossing the London Marathon finish line for the first time on her dad's birthday.

"It is one I'll never forget it. I cried to the poor lady giving my medal which had his birth date on.

"What a day what an emotional and incredible day that was."

Her other most memorable run was on her 50th birthday when she decided to run 50 miles.

"I felt like Madonna in the park, surrounded by runners that had come from all over the country to support me and run a few laps with me.

"Wow. I was so overwhelmed. What a day. What a birthday.

"I love running and if I can encourage others to run then it makes it all worth it - I promised my dying daddy I would do my best to try and make a difference.

"Dust your pumps off, put them on. I promise you, you'll not regret it."

The Hollywood and Wythall Fun Run takes place on June 7 - visit: wythall-hollywoodfunrun.org.uk for more and to sign up for either the 5K, 10K or the Families on Track relay.

For more on the Couch to 5K sessions in Bromsgrove and Redditch, email the Sports Development team at: sd@bromsgroveandredditch.gov.uk or call 01527 881404.

**OFTEN IMITATED BUT NEVER EQUALLED**  
 While all costs are going up - **OURS ARE STAYING DOWN**



Due to our customer friendly services of No Door Salesmen, No Showroom and little overheads

**NEW FLUSH WINDOWS**

**BEAUTIFUL COMPOSITE DOORS**  
 Fully fitted  
**Competitive Prices**



**UPTO 30% OFF ALL WINDOWS**



**ALL PRODUCTS HAVE A 10 YEAR INSURANCE BACKED WARRANTY**

**BILL MOORE'S WINDOWS AND DOORS**

A NAME YOU CAN TRUST

1 Brookside Close, Stratford-upon-Avon, Warwickshire CV37 9PL

**01789 415171 • 07729 689239 • www.billmooreswindowsanddoors.co.uk**

**PUBLIC NOTICES**

For all your latest information on Planning Proposals, Traffic Notices, Goods Vehicle Operator Licences, Licences To Sell Alcohol and Probate Notices...





Michael Povey has been jailed for life and must serve a minimum of 20 years. s

# Rednal killer is jailed for life

by **Tristan Harris**  
tristan.harris@bullivantmedia.com

**A MAN who killed a father by driving into him in Rednal, and then created a web of lies to cover his tracks, has been jailed.**

Lee Baker, aged 28, was killed on July 21 when a car was deliberately driven into him on Ormscliffe Road.

After an earlier argument with three men, Lee and his brother were walking along the road at 5.10pm.

Michael Povey, 29, who had heard about the disagreement, drove his BMW straight into the brothers.

Lee's brother managed to jump out of the way but Lee was tragically killed after suffering traumatic head injuries.

Povey, who had mounted the pavement before hitting the front wall of an address on the road, then ran off into the street to avoid being caught.

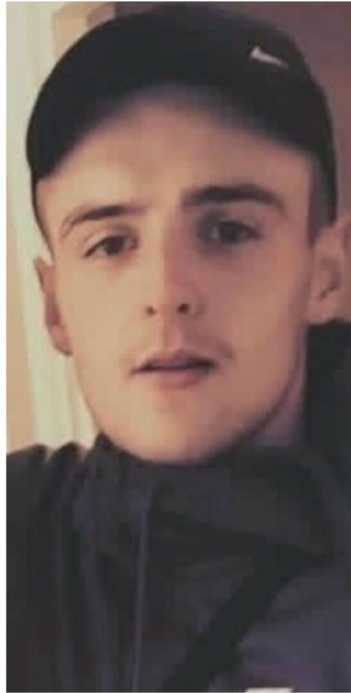
It was then his lies began, as he called 999 claiming that his car had been stolen by a 'yob' and that he was 'scared to go back around as someone had been hurt'.

Povey, of no fixed address, was found guilty of murder on February 6, and had pleaded guilty to perverting the course of public justice.

Appearing at Birmingham Crown Court last Friday, he was sentenced to life imprisonment with a minimum sentence of 20 years.

In tribute to Lee, his family said: "We know Lee has gone and we would love to see him or hold him just one more time, but we can't.

"He has been taken from us forever.  
"He will be missed and loved forever."



Lee Baker died after suffering traumatic head injuries. s

## Would you like a decision with that?

THE DECISION about whether McDonald's can build a 'drive-thru' restaurant in Bromsgrove has been deferred.

No decision was reached by Bromsgrove District Council's planning committee by 10.30pm on April 9.

The proposed outlet, on the Stourbridge Road car park opposite Parkside, is similar to an application submitted in 2018.

The restaurant would employ more than 65 staff, primarily locals. It could generate up to 120 jobs, including education, training and delivery roles, McDonald's said. The application includes the restaurant, car park and landscaping, on the junction of Stourbridge Road and Birmingham Road, and McDonald's has made changes

to site access to differentiate from the previous application.

The 2018 bid prompted fears of increased traffic on the two roads and criticism of its siting within walking distance of three schools and more than 1,600 pupils.

Eight years ago, campaigners said the headteachers of two of the schools had voiced their opposition to the proposed McDonald's.

Some concerns were also raised regarding the visual impact on the nearby historic buildings, including the grade II listed Parkside and Davenal House, the Norton Collection Museum and nearby Bromsgrove town centre conservation area.

**JC  
GLAZING  
& REPAIRS  
LTD**

*A FRIENDLY, HONEST &  
RELIABLE SERVICE...*

**Have your double glazed units misted up?**

**Don't despair help is here!**

**WE CAN REPLACE THEM**  
Call us for a free quote



- Locks
- Hinges
- Mirrors
- Misted Glass
- Safety Glass
- Decorative Glass
- Cat Flaps in Glass
- Conservatory Repairs
- Fascias, Soffits & Guttering
- UPVC Windows, Doors & Conservatories
- Log Burner Glass Supplied

ALL WORK GUARANTEED

**ANYTHING TO DO WITH GLASS & WINDOWS**

**A-RATED WINDOWS SUPPLIED & FITTED**



**UPGRADE YOUR OLD U.P.V.C. WINDOWS**

We can replace your existing glass with Energy Saving Glass & refurbish your frames at half the cost of new.

Patio Doors French Doors  
Front Doors Back Doors  
Composite Doors

Card payments accepted 

**Call Jon on 01527 857 786  
or 07931 198 152**



**Longbridge  
Cladding & Roofing Ltd**  
A local team you can trust

## SPECIALISTS IN ALL ASPECTS OF ROOFING

New Roofs - Roof Repairs - Flat Roofing  
Fascia, Soffits & Guttering - Cladding  
Moss Removal Chimney / Ridge Tile Repointing  
Local References Available - Free Quotations

**For a FREE quote, contact the local company you can trust**

**Birmingham - 0121 667 8938**  
**Redditch - 01527 906 586**

Park House, Bristol Rd South, Rednal,  
Birmingham B45 9AH

[www.longbridgecladdingandroofingltd.co.uk](http://www.longbridgecladdingandroofingltd.co.uk)  
[sales@longbridgecladdingandroofingltd.co.uk](mailto:sales@longbridgecladdingandroofingltd.co.uk)



# Roger has no plans to slow down as his 75th birthday comes in sight

by **Tristan Harris**  
tristan.harris@bullivantmedia.com

**A BROMSGROVE man is running more than 75km in the week before his 75th birthday, to raise funds for the Midlands Air Ambulance.**

Roger Ottley will celebrate his milestone on Friday, April 24.

The evergreen athlete runs with the Avoncroft Hurriers group, which meets at 10am every Saturday at the Ewe and Lamb; and with Run Sanders, which gets together at 6.30pm

every Wednesday at Sanders Park.

Roger is an instrumental member of both groups and plans the routes every week.

On the opening day of his effort, tomorrow (Saturday), Roger will start at the Ewe and Lamb car park at 10am and run to the Hanbury Turn and back – a total of 9.7km.

On the second day, on Sunday, Roger will start and finish at Harrow Close, from 10am, and take in roads including Timberhonger Lane, Whitford Road, Fox Lane and Rock Hill.

On Monday he will start at

6.30pm, running 9km from Sanders Park car park, and back, via Fockbury Mill Road, Timberhonger and Whitford Road.

On Tuesday, Roger's 9.1km run will start and finish at Harrow Close, from 10am and taking him past Morrisons and Bromsgrove Rugby Club.

On Wednesday – day five – Roger will start at Sanders Park at 6.30pm and finish there, having completed an impressive 11.8km.

Day six of Roger's running quest, at 10am on Thursday, will also start and finish at Harrow Close, taking in Rock

Hill, a lot of the town centre and leading him past All Saints Church.

He will notch up a total of 12.1km on that day.

And on his birthday – which will be day seven – Roger will be taking on his longest run. The 14km route will start and end at the Boat and Railway pub. It will begin at 6.30pm and take in canal towpaths, right up to Tardebigge reservoir. For more detailed versions of Roger's route, visit this story at [bromsgrovestandard.co.uk](http://bromsgrovestandard.co.uk), and visit: [justgiving.com/page/roger-ottley-1?](http://justgiving.com/page/roger-ottley-1?) to donate to his fundraising page.



**Roger Ottley is running more than 75km in the week leading up to his 75th birthday, to raise funds for the Midlands Air Ambulance. s**

**ANTIQUE & VINTAGE FAIR**  
**SUNDAY 26TH APRIL**  
**ENTRY 9AM - 2PM**  
**YOU INDOOR STALLS**  
Sky Blue Sports Connexion Ryton on Dunsmore CV8 3FL  
Free parking & café - Entry £3, under 10's FREE  
Dogs are welcome  
Contact 07939 445024 [www.gjfair.co.uk](http://www.gjfair.co.uk)

## Course offers help for those suffering with arthritis pain

PEOPLE in Redditch living with arthritic knee, hip or back pain can sign up for the latest Escape Pain programme.

The free six-week programme helps people with long-term pain via education, self-management, coping strategies and individually tailored exercises.

The course runs twice per week at the Abbey Stadium and is designed to help participants

understand their condition and how to cope with pain better.

Outcomes from the most recent course showed positive results from participants, including a 73 per cent reduction in pain during the day, a 95 per cent increase in social activity, a 36 per cent reduction in the need for help from others and a 52 per cent increase in confidence.

Hayley Gwilliam, the coun-

cil's sports development officer, said: "We always see outstanding results from the Escape Pain courses and the feedback we receive from residents speaks for itself. People tell us they feel more confident, less isolated and are able to manage their pain much more effectively."

"This programme can be genuinely life-changing and we would encourage anyone struggling

with arthritic pain to join the next course."

For more details, to register interest or confirm places, visit [redditchbc.gov.uk](http://redditchbc.gov.uk) and search for Escape Pain.

Residents can contact Hayley at: [hayley.gwilliam@bromsgroveandredditch.gov.uk](mailto:hayley.gwilliam@bromsgroveandredditch.gov.uk) or call her on 01527 881404. Sessions are on Wednesdays and Fridays, from 2.30pm to 3.30pm.



**Lunchtime Specials and Under 60s Menu £10.25**

Tuesday to Saturday  
12 noon to 5pm

**Golden Oldies Only £9.75**

Golden Oldies also available  
Tuesday to Saturday  
12 noon - 5pm

**Mid Week Roast on a Thursday £12.25**

**3 course Sunday Lunch £19.25 - Sunday 12 noon - 4pm**

**Full Main Menu Tuesday - Saturday 12 noon - 9pm, Sunday 12 noon - 4pm**

Evesham Road, Astwood Bank, B96 6AX Tel: 01527 894213



Coun Sam Ammar, right, was impressed with a similar development in Sutton Coldfield and said the new Sainsbury's would be beneficial to Bromsgrove. s

# Member backs application for new Sainsbury's

by **Tristan Harris**  
tristan.harris@bullivantmedia.com

**RESIDENTS** are being urged to have their say on Sainsbury's proposal for a new store in the former Homebase building on the Brook Retail Park, in Bromsgrove.

According to Sainsbury's, the proposed development would create up to 100 new jobs – around two-thirds of which would be part-time.

Sainsbury's pointed out Homebase had 25 employees and said anyone who worked at the Homebase would be guaranteed an interview for the new Sainsbury's store.

The retail park provides a total of 164 parking spaces, which were used by customers of Homebase and Pets at Home. That arrangement, Sainsbury's said, would continue, with 75 per cent of the spaces – 123 – being available for Sainsbury's customers.

Deliveries to the store – via the existing delivery service yard at the back, accessed off Sherwood Road – would comprise one to two Sainsbury's lorries per day, along with smaller vehicles for bread, dairy goods and newspapers, the supermarket said.

The proposed opening times are from 6am to midnight, from Monday to Saturday, and 10am to 5pm on Sundays and bank holidays.

In the planning documents, the supermarket stated: "Currently, Sainsbury's does not have a supermarket offer in Bromsgrove and

the opportunity to open a new store in the former Homebase unit will bring Sainsbury's quality and value food offering to the area, along with an in-store Argos."

Worcestershire county councillor for Bromsgrove South, councillor Sam Ammar, said she backed the proposal and highlighted economic and community benefits.

Coun Ammar visited a comparable Sainsbury's redevelopment in Sutton Coldfield, and described the transformation of the Homebase there as 'remarkable', adding, it showed what could be achieved.

"This is a fantastic opportunity to create local jobs for local people," said Coun Ammar

"At a time when employment opportunities are crucial, this investment will provide a meaningful boost to our local economy."

Coun Ammar said she had been given reassurances by Sainsbury's that Bromsgrove's Argos would remain on the high street.

She added deliveries – which would take place at around 5am or 10pm – would not cause disruption and, in her view 'were not obstructive'.

Coun Ammar urged residents to have their say on the application, adding: "We need to ensure that the voices of local residents are heard. I strongly support this project and encourage others to consider the positive impact it could have on our community."

People can read this story at [bromsgrove.standard.co.uk](http://bromsgrove.standard.co.uk) and can click through to the Bromsgrove District Council planning portal page, to convey their views.

## Supermarket sweep chance on offer

A NEW Iceland store will open in St Andrew's Square Shopping Centre in Droitwich at 8am on Tuesday, April 21, creating more than 20 jobs.

To celebrate the opening, Iceland will be giving away £1,500 worth of vouchers to the first 150 customers in the queue.

On the opening day, every customer in the queue before 7.30am will be given a raffle ticket, entering them into a prize draw to win the chance to take part in a supermarket-sweep style challenge, where they can fill their trolley for free for 90 seconds.

Kristian Barrett, chief operating officer

at Iceland Foods, said: "We're excited to be opening our new store in Droitwich, bringing even more fantastic deals and a brilliant range of frozen, grocery and fresh foods to local shoppers."

"We can't wait to open our doors and see our customers enjoy the unrivalled variety of products available across the store."

The new store will be open between 8am and 6pm, from Monday to Saturday, and 10am until 4pm on Sundays.

Poundland, which used to occupy the building, closed in December. Before that, the site hosted a Wilko.

the **fareys** FAREWELL TOUR

**THE PALACE THEATRE, REDDITCH**  
**Tuesday 28th April**  
**Tickets from BOX OFFICE 01527 65203**  
**or [www.redditchpalacetheatre.co.uk](http://www.redditchpalacetheatre.co.uk)**

**FOR THE FINAL TIME** hear them sing all their hits including **SWEET 16, I WILL LOVE YOU, THE GREEN FIELDS OF FRANCE, RED ROSE CAFE, THE OLD MAN, LEAVING NANCY, CLARE TO HERE etc.**

**Are you the retiring type?**

Whether you're after an action packed later life or looking to wind down and relax, Solihull Village could be the place for you

**Solihull Village**

To discover more about village life and our beautiful retirement apartments, call 0121 227 3670

# So much more than self storage

Wellesbourne, Shipston-on-Stour, Mickleton & Long Marston



We can help you move house, build an extension or start a new hobby

Call Lindsey 0800 772 0200  
hello@beyondstorage.co.uk  
Wimpstone Fields, Wimpstone  
Stratford-upon-Avon CV37 8NN





Tony Oldershaw, Jane Martin and Jane Oldershaw at last year's Primrose Memory Walk. Picture by Lee Moody. s

## Walking to remember

RESIDENTS from Bromsgrove, Droitwich and Redditch can remember a loved one when the Primrose Hospice's popular Memory Walk returns.

The event will take place in the beautiful grounds of Hanbury Hall on June 7 and will bring the community together in celebration, remembrance and hope.

The charity is warmly welcoming walkers of all ages to take part in this special event which was created to honour the memories of loved ones while raising vital funds to support local patients and families.

Participants do not need to have had any previous connection to Primrose Hospice to get involved.

Every person who takes part will receive their own bright yellow Primrose Memory Walk T-shirt, along with a dedication sign to personalise with the name or message of someone dear.

Long-standing volunteer Tony Oldershaw took part in the Primrose Memory Walk in 2025 with his wife Jane.

Tony said: "It was a wonderful day -

although we didn't know anybody else, it was really nice to talk others about their loss and to remember together."

Walkers can choose between two scenic routes - a gentle accessible stroll or a longer walk of around three miles.

Both routes are designed to be enjoyable and inclusive - perfect for individuals, families, friendship groups and supporters of all abilities.

Well-behaved dogs are very welcome to join the day too.

Registration is £15 per adult and £10 per child or £60 for a group ticket for up to six people.

Visit [primrosehospice.org/events/memory-walk/](http://primrosehospice.org/events/memory-walk/) or call the Primrose Hospice fundraising team on 01527 889796 for more information and to book.

The 2026 Primrose Memory Walk is proudly sponsored by Thomas Brothers Funeral Directors and is supported by the National Trust which has generously helped ensure this treasured community event continues to grow each year.



# THE COURTYARD CAFE

at Tardebigge

## Mini Afternoon Tea

### £10pp

Two Finger Sandwiches Choose from Ham, Cheese or Egg Mayo  
A Fruit or Plain Scone with Clotted Cream & Strawberry Jam  
An Individual Victoria Sponge cake  
A Mug of Tea or an American

*Eat in or takeaway available*



Advance booking is essential  
01527 543041

Mon-Sat 9am-2.30pm  
& Sun 9.30am-2pm

The Courtyard Cafe, Tardebigge Court, Hewell Lane, Redditch B97 6QJ  
Tel: 01527 543 041 Email: [contact@courtyardcafetardebigge.com](mailto:contact@courtyardcafetardebigge.com)  
**COURTYARDCAFETARDEBIGGE.COM**




# MP meets post chiefs for talks

TALKS have taken place between Royal Mail and Bromsgrove MP Bradley Thomas after residents claimed they had missed hospital appointments because letters had not been delivered on time.

Mr Thomas has met with Royal Mail bosses following a rise in complaints from residents about unreliable postal deliveries.

The town's MP has raised each case directly with the Royal Mail and, back in January, he launched a survey so residents could let him know.

Of the 258 residents who responded to the survey, 87 per cent said the postal delivery service they had been receiving was 'not very reliable.'

When asked if they had missed an important appointment because their post was not delivered on time, 35 per cent of respondents said they had.

And 96 per cent of residents who responded to the survey also said they believed Royal Mail's postal delivery service needs improving.

In Parliament, Mr Thomas has urged the Government to get together with the management of Royal Mail and Ofcom to deliver an action plan to ensure local residents received an improved service.

Mr Thomas said: "Whenever I raise individual cases with the Royal Mail, all I get from them is a 'we're very sorry' that letters haven't been received.

"The time for platitudes from Royal Mail is



over - residents deserve real action. "The results of my survey are not surprising. The issue of unreliable postal deliveries is widespread across Bromsgrove. "I'll be sharing the results of the survey with Royal Mail and Ofcom, and I'll be asking them how they intend to improve the service residents are currently receiving. "As I've said before, my issue is not with our hardworking postmen and women. "My issue is with how the Royal Mail is currently being run."

**Bradley Thomas has met with Royal Mail bosses after concerns were raised. s**

**10% OFF**  
Sunday to Thursday with this advert

## Mt EVEREST

### Authentic Nepalese Cuisine

**Opening Times:**  
Monday 6-11 pm Tuesday 6-11 pm  
Wednesday 6-11 pm Thursday 6-11 pm  
Friday 6-11 pm Saturday 6-11 pm  
Sunday 6-11 pm

**Tel: 01527 850717**  
**31 Alcester Road B80 7LL**

ADVERTISEMENT

## The French Property Exhibition is coming to BIRMINGHAM

- Browse through hundreds of properties from across France and speak to the agents
- Attend the free and informative seminar programme covering all aspects of buying in and moving to France
- Meet the experts - get free advice from the legal, financial, relocation, tax and visa specialists

**FRENCH PROPERTY EXHIBITION**  
SPONSORED BY  
**KENTINGTONS**  
TAX & INVESTMENT CONSULTANTS

**16-17 MAY 2026**  
NATIONAL CONFERENCE CENTRE, BIRMINGHAM  
(NEXT TO THE NATIONAL MOTORCYCLE MUSEUM)  
**10AM - 5PM**

**SCAN HERE TO REGISTER FOR FREE TICKETS**

HELPING YOU FIND YOUR DREAM HOME IN FRANCE FOR OVER 35 YEARS  
REGISTER FOR **FREE** TICKETS AT:  
**www.frenchpropertyexhibition.com**

## New French property event!

**16-17 MAY 2026**

**National Conference Centre, Birmingham**



**There's no better place to start a search for a French property than the French Property Exhibition.**

Visitors will have the chance to meet with all the property professionals they will need on their property journey, advising on everything needed for a successful purchase or move to France.

**FREE SEMINARS**

The daily programme of free seminars go into depth about buying and selling French property, deciding where to buy, understanding the French tax and legal systems, and choosing the right visa.

Visitors will receive a complimentary copy of the latest issue of French Property News magazine – packed full of expert advice, location guides and inspiring real-life Stories.

**CONVENIENT LOCATION**

The event takes place at the Britannia Suite, at the National Conference Centre, situated by J6 on the M42, with free on-site parking. The National Motorcycle Museum is just next door if visitors fancy making an extra stop.

**Here are just a few things visitors can expect to discover:**

- How the buying process works in France
- Information on the different locations and property prices
- What visa you will need to move to France
- Things to consider before buying, including inheritance planning
- Tax, mortgages, currency and insurance advice
- How to access French healthcare
- Planning for a smooth moving day
- Advice on renovation and building projects

**Register now for your free tickets to the French Property Exhibition at: [www.frenchpropertyexhibition.com](http://www.frenchpropertyexhibition.com)**

# Hospital's new kit

A NEW computed tomography (CT) scanner and upgraded x-ray facilities are helping patients at Northfield's Royal Orthopaedic Hospital.

The scanner creates high resolution layered images across body parts, giving doctors quick access to important information they need to make medical diagnoses, ensuring the new machine and renovated department facilities provide enhanced diagnostics.

The equipment is designed to be more comfortable for patients and improves communication between clinician and patient during use.

The CT scanner helps simplify complex, image-guided needle procedures.

Staff will also benefit from a comprehensive training programme, following installation, to make sure everyone is fully confident in using the new system.

The upgraded environment and modern equipment will support a more efficient and positive workplace for staff.

The installation took 12

weeks and saw the trust introduce a modular scanner to continue service provision.

Kirsty Walker, deputy head of imaging at the hospital, said: "As a specialist orthopaedic hospital with a large number of oncology patients, CT-guided biopsies are an integral part of our care service but they require patients to undergo anaesthesia.

"Through careful planning and collaboration across teams, we were able to continue to provide these critical interventional treatments while we replaced our CT scanner.

"The temporary solution involved a second, portable cabin, to act as an anaesthesia and recovery suite for patients to receive treatment comfortably and safely.

"Not only could we provide urgent CT-guided biopsies for our oncology patients, we were also able to continue providing CT-guided injections for our spinal patients without needing to refer them to other hospitals in the region while works were under way."



Oakland International's Sallie Attwell, left, with Westlands First School head Rachel Roberts, second from left, deputy head Sue Edwards, and representatives from PAL Fitness. s

# Pupils get pedalling with charity's help

by Ashleigh Osborne  
ashleigh.osborne@bullivantmedia.com

**REDDITCH children's charity the Oakland Foundation has funded cycling lessons for pupils at a Droitwich primary school, delivered by PAL Fitness at Velo Park, in Evesham.**

Foundation trustees Peter Vaughan and Mark Williams attended the session alongside Oakland International co-founder and key charity sponsor Sallie Attwell, meeting pupils and seeing first-hand the positive impact the programme is having on children's confidence, wellbeing and physical development.

Westlands First School deputy head and special educational needs co-ordinator, Sue Edwards, said: "We are incredibly grateful to the Oakland

Foundation for making this valuable opportunity possible for our pupils.

"The cycling sessions at Velo Park have had a noticeable impact, not only in developing physical skills but also in boosting confidence, independence, and overall wellbeing. It has been wonderful to see children challenge themselves, support one another, and take pride in their progress.

"We would also like to thank PAL Fitness for delivering such engaging and supportive sessions and for helping create a positive and encouraging environment for all involved."

PAL fitness' funding and development manager, Kieran Franks, said: "Thanks to vital support from the Oakland Foundation, our enhanced learning opportunity programme has enabled children from Westlands First School to thrive in a practical setting, using our specialist adapted bikes.

"It has been great to see the impact:

children growing in confidence session by session and learning key skills to support them to stay safe, become more independent and work in teams."

The Oakland Foundation focuses on schemes to create lasting change for children and young people, especially those who face barriers to access.

Through inclusive, early-intervention programmes, the charity aims to give children the confidence, resilience and skills they need to thrive at school and beyond.

Oakland trustee Mark said: "This project is a great example of what can be achieved when schools, specialist providers and charities work together. The cycling sessions delivered by PAL Fitness have a truly positive impact and we're delighted to support Westlands School in giving pupils experiences that can make a lasting difference."



The team with the new CT scanner at Northfield's Royal Orthopaedic Hospital. s

# WHAT'S ON AT ARTRIX

**LIVE MUSIC:**

- 2<sup>ND</sup> MAY: GIVE ME THE NIGHT (GEORGE BENSON TRIBUTE)
- 3<sup>RD</sup> MAY: THE SABRINA CARPENTER TRIBUTE
- 4<sup>TH</sup> MAY: CASSIDY JOHNSON SINGS CAROLE KING
- 8<sup>TH</sup> MAY: AND FINALLY PHIL COLLINS
- 9<sup>TH</sup> MAY: OASISH
- 14<sup>TH</sup> MAY: ELTON'S SONG - BEYOND THE YELLOW BRICK ROAD
- 15<sup>TH</sup> MAY: THIS IS MERSEYBEAT
- 16<sup>TH</sup> MAY: CLASSIC ROCK REVIVAL
- 17<sup>TH</sup> MAY: CELEBRATING CELINE - A NEW DAY
- 22<sup>ND</sup> MAY: FRANKIE - THE CONCERT (FT THE FALSETTOS)
- 29<sup>TH</sup> MAY: RHINESTONE COWBOY: THE GLEN CAMBELL STORY
- 30<sup>TH</sup> MAY: BURN DEEP PURPLE TRIBUTE
- 5<sup>TH</sup> JUNE: THE CARPENTERS EXPERIENCE
- 6<sup>TH</sup> JUNE: EVERLY BROTHERS BY CANDLELIGHT
- 19<sup>TH</sup> JUNE: BEEGEES YOU SHOULD BE DANCING
- 26<sup>TH</sup> JUNE: I'M EVERY WHITNEY
- 4<sup>TH</sup> JULY: SOUND & VISION (TRIBUTE TO BOWIE)
- 10<sup>TH</sup> JULY: BLONDISH (THE MUSIC OF BLONDE)
- 11<sup>TH</sup> JULY: G2 DEFINITIVE GENESIS
- 23<sup>RD</sup> JULY: ULTIMATE ELVIS EXPERIENCE
- 24<sup>TH</sup> JULY: DESPERADOS EAGLES
- 6<sup>TH</sup> AUGUST: 50 YEARS OF FENDER
- 8<sup>RD</sup> SEPTEMBER: THE JEFF BECK EXPERIENCE
- 4<sup>TH</sup> SEPTEMBER: LUKE COMBS EXPERIENCE
- 6<sup>TH</sup> SEPTEMBER: A NIGHT IN KILKENNY
- 10<sup>TH</sup> SEPTEMBER: SIXTIES EXPLOSION
- 12<sup>TH</sup> SEPTEMBER: CLASS OF 55 (HISTORY OF ROCK N ROLL)
- 13<sup>TH</sup> SEPTEMBER: THE STROY OF JOHNNY CASH & JUNE CARTER

**EVENT CINEMA:**

- 20<sup>TH</sup> APRIL: NATIONAL THEATRE LIVE: ALL MY SONS
- 21<sup>ST</sup> APRIL: ROYAL OPERA LIVE: THE MAGIC FLUTE
- 5<sup>TH</sup> MAY: ROYAL OPERA LIVE: EUGENE ONEGIN
- 28<sup>TH</sup> MAY: NT LIVE: LIVE PLAYBOY OF THE WESTERN WORLD
- 25<sup>TH</sup> JUNE: NT LIVE: LES LIAISONS DANGEROUS

**CHRISTMAS SHOWS:**

- 7<sup>TH</sup> DECEMBER: MICHAEL BUBLE TRIBUTE
- 14<sup>TH</sup> DECEMBER - MICHAEL BUBLE TRIBUTE
- 17<sup>TH</sup> DECEMBER - OLLY MURS AT CHRISTMAS (TRIBUTE) - ON SALE SOON!
- 21<sup>ST</sup> DECEMBER - DES COLEMAN & THE ALL STARS BIG BAND XMAS CELEBRATION

**BOX OFFICE: BUY ONLINE, IN PERSON OR CALL**  
01527 361 324 // ARTRIXBROMSGROVE.CO.UK  
**BOX OFFICE OPENING HOURS:**  
MONDAYS - 10:00-12:00 & 18:00-20:00  
TUESDAYS-THURSDAYS: 10:00-12:00  
FRIDAYS: 12:00-14:00  
SATURDAYS - 1000-1200  
(CLOSED BANK HOLIDAYS)

**DID YOU KNOW**  
ARTRIX HAS THE BIGGEST SCREEN IN BROMSGROVE

**ARTRIX IS RUN BY VOLUNTEERS FOR THE PEOPLE OF BROMSGROVE**

**GREAT NEWS!**  
AT THE END OF APRIL, ARTRIX IS UNDERGOING A REFIT OF THE SEATING

**ARTRIX HAS FREE PARKING FOR ALL PATRONS**  
YOU JUST NEED TO VALIDATE YOUR CAR REG.

## WEEKLY CLASSES

**WEEKLY CLASSES:**

**MONDAY:**  
ZUMBA WITH CHARLEY  
CONTACT: MARKETING@ARTRIXBROMSGROVE.CO.UK

HALFTAIL: ACTING LIKE ADULTS (EVE)  
CONTACT: HALFTAILPRODUCTIONSUK@GMAIL.COM

**TUESDAY:**  
LCTKD - TAI CHI  
CONTACT: MICHELLE@LCTKD.COM

INNOVATE DANCE (PM)  
CONTACT: INNOVATE.DA@OUTLOOK.COM

**WEDNESDAY:**  
LCTKD - TAI CHI  
CONTACT: MICHELLE@LCTKD.COM

INNOVATE DANCE  
CONTACT: INNOVATE.DA@OUTLOOK.COM

**THURSDAY:**  
ENCORE ARTS THEATRE SCHOOL  
CONTACT: CAROLINE@ENCOREARTS.ORG

**FRIDAY:**  
CREATIVE WRITING FOR ADULTS  
CONTACT: WORCSWRITING@GMAIL.COM

THE STAR PROJECT - YOUTH DRAMA  
CONTACT: INFO@THESTARPROJECT.INFO

**SATURDAY:**  
CREATIVE WRITING FOR CHILDREN  
CONTACT: WORCSWRITING@GMAIL.COM

ARTRIX YOUTH THEATRE - HIGH SCHOOL MUSICAL JR  
CONTACT: YOUTHTHEATRE@ARTRIXBROMSGROVE.CO.UK

PERFORMANCE HUB BABY BALLET  
CONTACT: INFO@PERFORMANCE-HUB.CO.UK

**SUNDAY:**  
ADULTS TAP DANCE (ONCE A MONTH)  
CONTACT: CASSIERIVETT@GMAIL.COM

**NEED TO HIRE A SPACE? IF YOU RUN A CLUB, SOCIETY OR JUST NEED A PLACE TO MEET WE HAVE LOTS OF SPACE AVAILABLE!**

CONTACT BOOKINGS@ARTRIXBROMSGROVE.CO.UK



# New food waste plans on the way

COUNCILS in Bromsgrove and Redditch are working on introducing household food waste collections in line with new legislation which comes into force this month.

Originally Bromsgrove District and Redditch Borough councils were working on a joint plan with Wyre Forest District Council to keep costs down but that did not materialise.

A spokesperson for Bromsgrove and Redditch Councils said: "Unfortunately, Wyre Forest withdrew from that process in January after raising concerns about Government funding.

"While we understand that decision, it meant Bromsgrove District and Redditch Borough Councils needed to go back to the drawing board and develop revised plans to deliver the service together in an affordable and sustainable way."

They added both authorities were committed to introducing food waste collections, adding it built on the commercial food waste collections the councils already provided.

"The collection vehicles were already ordered and more work will now be needed to put all the practical arrangements in place, including recruiting staff and expanding depot capacity.

"Because these are major decisions, this must be considered and approved by elected councillors later this year."

The councils added a further update was due in the summer with a view to starting a phased 'area-by-area' roll-out later this year, subject to those final decisions.

"Once the plans are finalised, including any



start dates, we'll update residents directly. "There will be lots of information before the service begins."

Research by Birmingham waste management experts at Divert has predicted how much food waste each authority in the West Midlands would collect.

It forecasts Bromsgrove would collect 7,106.82tonnes of food waste every year and Redditch's will be 6,157.34tonnes. This has the potential to power 790 homes each year in Bromsgrove district and 684 in Redditch borough each year.

The authority expected to collect the most food waste annually is Birmingham City Council with 82,956.58tonnes predicted by Divert - that would power 9,217 homes.

With regard to the original north Worcestershire food waste plan, a Wyre Forest District Council spokesperson said: "The current situation is that we will not be introducing until the Government provides additional funding to cover the cost of the new burden."



**BROMSGROVE SCHOOL WINTERFOLD**  
 PREP • PRE-PREP • NURSERY  
 Amazing opportunities for children aged 2 to 13  
 Individual visits welcome



**OPEN MORNING**  
**Friday 24th April - Come and see us in action**  
 contact admissions to arrange a time for your visit

**THE WINTERFOLD WAY**  
 nurturing curiosity and building confidence - naturally  
 01562 777234  
 admissions@winterfoldhouse.co.uk  
 www.winterfoldhouse.co.uk

## 5 REASONS TO REVIEW YOUR WILL

**£49 OFF NEW WILLS**

- ✔ Who are your Executors, family, or someone else?
- ✔ Are you up to date with legislation?
- ✔ Are your wishes up to date?
- ✔ Have you built in "What if" clauses?
- ✔ Where is the original Will?

5 STAR  
  
 Reviews ★★★★★



**Home Visits Available**

**Tel: 01527 877313**

**DON'T KEEP PUTTING THIS OFF:**

**Protect your loved ones and your Home. Writing Wills for over 30 years: we are genuine local people with £2.5 million of professional indemnity insurance. We also offer Trust, Power of attorney and Probate services.**



**The Will Partners**

11 Kidderminster Road,  
 Bromsgrove, B61 7JJ

**SME** UK Legal Awards 2026  
n e w s

[www.thewillpartners.co.uk](http://www.thewillpartners.co.uk)

# SUPERVALUE FURNITURE & BED CENTRE COMFORT YOU CAN TRUST

## Your Local Family-Run Retailer for Over 35 Years

### Who Are We?

- OVER 35 YEARS OF LOCAL SERVICE** - Caring for Droitwich homes with comfort, quality, and a personal touch
- COMMITTED TO "COMFORT FOR EVERY CUSTOMER"** - Supportive, stylish, and affordable mobility furniture from trusted British brands.
- FAMILY-RUN, FRIENDLY ADVICE** - Guiding you to the perfect Rise & Recline Chair or Adjustable Bed for your home.
- MORE THAN FURNITURE** - helping make life at home easier, more comfortable, and more enjoyable for you and your loved ones.

**HOME VISITS AVAILABLE, CALL STORE TO ARRANGE**



### Riser Recliner Chairs

- Enjoy comfort, support, and style with our wide range of quality recliner chairs and matching sofas.
- Choose from a huge selection of fabrics, leathers, and colours
  - Find sizes to suit your home and personal comfort
  - Take advantage of excellent Pre- and After-Sales Service
  - Enjoy discounted prices & VAT exemption available



### Adjustable Beds

- Experience effortless comfort and independence with our range of adjustable beds - designed for quality sleep and everyday ease.
- Simple, one-touch control
  - Available in Single, Double, and Dual models
  - Fantastic fabric and headboard options
  - Discounted prices & VAT exemption available



### Why Choose Us?

- ✓ FAMILY RUN FOR OVER 35 YEARS
- ✓ FRIENDLY, PERSONAL SERVICES
- ✓ TRUSTED & RELIABLE
- ✓ FAST LOCAL DELIVERY
- ✓ TRUSTED BRITISH BRANDS
- ✓ HOME VISITS AVAILABLE

*"Another Great Experience - Fantastic Service starting in the Showroom, right through to delivery and installation. Five Star Service! Fantastic Products!"*  
(L.H. Sept 2025)



*"Fabulous Products. Lovely and Helpful Staff and Good prices - what more could you ask for!"*  
(CB August 2025)



*"First Class Service again. Very reasonable prices for good quality furniture. Quick delivery. Very Helpful and Friendly Staff. Highly Recommend them!"*  
(MQ July 2025)



**VISIT OUR DROITWICH SHOWROOM – OPEN 7 DAYS A WEEK**

**21-29 HIGH STREET, DROITWICH, WR9 8EJ**

**01905 796 507    Info@svfonline.co.uk**



**Free parking    Free Local Delivery    Free Installation    Disposal Available**

# SUPERVALUE FURNITURE & BED CENTRE MASSIVE SAVINGS THROUGHOUT STORE

## Your Local Family-Run Retailer for Over 35 Years



**HYPNOS**  
THE MOST COMFORTABLE BED IN THE WORLD

**KINGSIZE FOR THE PRICE OF A DOUBLE**



**UK MADE FULLY ASSEMBLED BEDROOM RANGES**



**Sleepeezee**  
ESTABLISHED 1924

**MODELS IN STORE**



**NEW OAK LIVING & DINING ROOM RANGE IN STORE**



**HIGHGROVE**

**4'0" / 4'6" DIVAN SET PACKAGE DEALS FROM £399**



**NEW MANGO LIVING ROOM RANGE IN STORE**



**RECLINERS FROM £495**



**CUSTOM SIZES AVAILABLE TO ORDER**



**Luxurious Handcrafted Bespoke Beds & Mattresses**



**BESPOKE UK MADE SUITES, SOFAS & CHAIRS IN STORE**



**Silentnight**

**MODELS IN STORE**



**RANGES OF OAK BEDROOM FURNITURE IN STORE**

**LARGE RANGE OF SUITES, SOFAS AND CHAIRS IN STORE ON CLEARANCE FOR IMMEDIATE DELIVERY**



**Buoyant**  
UPHOLSTERY

**NEW CORNER GROUPS IN STOCK**



**LA Z BOY**  
Live Life Comfortably

**LARGE RANGE OF MODELS IN STORE**



**NEW GPLAN MODELS INSTORE**



**VISIT OUR DROITWICH SHOWROOM  
OPEN 7 DAYS A WEEK**

**21-29 HIGH STREET, DROITWICH, WR9 8EJ**  
**01905 796 507**   **Info@svfonline.co.uk**



### WHY CHOOSE US ?

-  **FREE LOCAL DELIVERY**
-  **FREE INSTALLATION**
-  **DISPOSAL AVAILABLE**

- FURNITURE DISPLAYED OVER SIX FLOORS**
- FRIENDLY STAFF WITH EXPERT KNOWLEDGE**
- Google 5 ★★★★★ GOOGLE REVIEWS**

# ITS OUR BIG SPRING CLEAN CLEARANCE SALE

**CARPETWISE**  
CURTAINWISE · FURNITUREWISE

2-4 Avon Retail Park  
Stratford upon Avon CV37 0AD

**01789 299446**  
[www.carpetwise.net](http://www.carpetwise.net)

**FANTASTIC  
SAVINGS  
ON QUICKSTEP  
END OF LINES**

**ROOM SIZE  
PACKS  
AVAILABLE** **£30**  
from  
MANY WITH MATCHING ACCESSORIES



Photograph by @sears.media

**Roll Stock Carpets**  
from **£8.99**  
view our fantastic range



**SAVE an EXTRA  
50% off marked  
price**  
on all carpet remnants

Photograph by @sears.media

**BIG SAVINGS** on Ex Display  
Luxury British Made Duresta Furniture

**SAVE up to 70%** across our  
clearance lamps, mirrors & pictures

**SAVE**  
up to **50%**  
on all clearance  
ready made curtains  
and bedding



SHOWROOM MODEL ONLY

**FREE LOCAL DELIVERY**  
on all Clearance Sofas & Suites



SHOWROOM MODELS ONLY

**HURRY GRAB THESE BARGAINS BEFORE THEY GO!**

# New strategy aims to tackle homelessness

RESIDENTS are being asked for their views on a plan to end homelessness and rough sleeping across Bromsgrove and Redditch.

The draft Homelessness and Rough Sleeping Strategy 2026 to 2031 sets out how Redditch Borough Council and Bromsgrove District Council - and its partner authorities in Malvern Hills, Wychavon, and Wyre Forest - will work together over the next five years to prevent homelessness and rough sleeping.

Where this cannot be prevented, the councils aim to ensure it is rare, brief and not repeated.

The strategy builds on work already carried out in recent years, which has seen thousands of people supported, new accommodation created for vulnerable residents and closer working between councils, health services and support organisations.

Homelessness affects people and families in many different ways and the causes are often complex, ranging from the lack of affordable housing to issues such as domestic abuse, mental health issues, family breakdown, financial pressures and challenges within the private rented sector.

To shape a strategy that responds effectively to these issues, it is essential we hear from people who have experienced homelessness, service users, partners and community organisations, as well as local residents.

Participants will have their say on the five

key priorities which will guide the councils' work.

These are preventing homelessness by tackling the root causes and helping people stay in their homes, providing targeted support for people most at risk, acting early to stop housing problems becoming a crisis, improving temporary accommodation and support for those who need it and helping people rebuild their lives and avoid repeat homelessness.

Redditch Borough Council's executive director for housing, Guy Revans, said: "Improving housing and supporting community wellbeing are among our priorities.

"We want to make sure we get this final strategy right and that we are working with partners to target the issues which will have an impact on our residents.

Bromsgrove District Council's cabinet member for strategic housing, Coun Kit Taylor, added: "We want the final strategy to reflect the needs and experiences of those who are threatened with homelessness or experiencing actual homelessness including rough sleeping."

The consultation will run for six weeks and will close at midnight on Sunday, May 24.

All responses are anonymous and views submitted will directly inform the final version of the strategy.

Visit this story on our website for the link to the survey.

# Evening offers chance to meet author Sarah

AN EVENING with Sarah Dunant will take place in The Studio at Bromsgrove's Artrix at 7.30pm on Wednesday, April 22.

Sarah, who has written 13 novels to date, will speak about her latest book 'The Marchesa'.

She studied history at Newnham College, Cambridge, and went on to be a writer, broadcaster, teacher and critic.

Four of her books have been shortlisted for awards and she was a founding vice-patron of 'The Women's Prize for Fiction' in the United Kingdom.

Having cut her teeth writing thrillers, in 2000 she returned to her first love - history and the Italian Renaissance.

Her latest book 'The Marchesa' brings alive the life and times of the First Lady of the Renaissance, the art collector and political manipulator, Isabella d'Este.

Tickets are £15 each with a \$1.25 booking fee per ticket. Parking at Artrix is free.

Visit [artrixbromsgrove.co.uk](http://artrixbromsgrove.co.uk) or visit the Artrix Box Office in person for more information and tickets.



Sarah Dunant will be at Artrix on Wednesday to talk about her latest book 'The Marchesa'. s

# Iceland

## YOUR NEW ST ANDREWS SQUARE SHOPPING CENTRE SUPERMARKET

**OPENS TUESDAY 21 APR 8AM**

THAT'S WHY WE GO TO

**Iceland**



SPONSORED BY



TO CELEBRATE OUR NEW STORE WE'VE GOT £1500 WORTH OF ICELAND VOUCHERS TO GIVE AWAY TO THE FIRST 150 CUSTOMERS\*

SPONSORED BY



\*The first 150 customers in the queue will receive an envelope with a voucher valued between £5 and £100 to spend in St Andrews Square Shopping Centre Iceland only. Voucher can be redeemed 21/04/26 to 03/05/26. Voucher not for resale, is non-exchangeable and non-refundable. One voucher per customer. Terms and conditions apply - see voucher and [iceland.co.uk/terms](http://iceland.co.uk/terms) for details. Over 18s only. © Iceland Foods Limited 2026. Registered Office Second Avenue, Deeside Industrial Park, Deeside, Flintshire, CH5 2NW. All rights reserved



Mr Malik with the theatre team at Droitwich Spa Hospital after completing the first-ever robotic-assisted knee replacement. s

# Joint enterprise

DROITWICH Spa Hospital has taken a step into the future after staff completed their first-ever robotic-assisted knee replacement.

The replacement procedure saw a new VELYS Robotic-Assisted Solution used.

The system looks to improve patient outcomes with shorter stays in the hospital and increased mobility post-surgery.

In the UK, more 70,000 knee replacement surgeries are performed each year, with most patients being over 65 years old.

Shahbaz Malik, consultant orthopaedic surgeon at The Droitwich Spa Hospital, carried out the first

VELYS procedure.

He said: "Introducing VELYS technology at Droitwich Spa Hospital is an important step forward for patients across Worcestershire needing treatment for knee arthritis and orthopaedic surgery."

"This advanced robotic-assisted system allows us to perform both total and partial knee replacements with enhanced precision, tailored to each patient's individual anatomy."

"For patients, this means a more personalised surgical experience, with the potential for less pain, faster recovery times, and improved long-term outcomes."

# Pressing the government to support our tourism

IT IS A pleasure to write again following a busy few weeks in Parliament.

Prior to the Easter recess, there were a number of significant debates and votes, in particular on the economy, rural affairs and the pressures facing key sectors such as tourism and hospitality.

In my role as Shadow Secretary of State for Culture, Media and Sport, I spoke in a Westminster Hall debate on proposals to introduce a new 'tourism tax' on overnight stays.

Tourism is a major contributor to the UK economy, supporting millions of jobs and generating significant revenue, yet it is already under considerable pressure.

Since the Chancellor's first budget, more than 200,000 jobs have been lost with more than half in the tourism and hospitality sector.

I raised concerns this additional tax would increase costs for families, deter visitors and place further strain on local businesses.

I will continue to press the Government to take a more supportive approach to this vital industry.

I also attended a debate on proposed changes to firearms legislation, following correspondence from a number of constituents.

While public safety must always come first, I remain concerned that further restrictions on shotguns would be unnecessary and could disproportionately impact farmers and those involved in legitimate rural activities. It is important rural communities are properly listened to as these proposals are developed.

There were also a number of important votes last month and I was proud to vote to protect the right to trial by jury, which remains a cornerstone of our justice system.

I also supported the Conservative Party's proposals to restrict access to social media for under-16s, reflecting concerns raised by many



## Westminster Diary

Nigel Huddleston MP writes for The Standard



parents, teachers and young people about the impact these platforms can have.

And I supported measures to back domestic energy production, including in the North Sea, to help strengthen energy security and keep costs down.

Also in my role as Shadow Secretary of State, I have continued to engage with stakeholders across the tourism, sport and heritage sectors.

I met with representatives from the Tourism Alliance to discuss the competitiveness of the UK as a destination and the challenges facing the visitor economy.

And I attended several events focused on sport and physical activity, including discussions on the protection of grassroots facilities and playing fields which play an important role in communities across the country.

I also met with rail operators to discuss local services and attended a reception hosted by Historic England, which highlighted the role heritage can play in supporting economic growth and regeneration. And I was pleased to welcome Badsey Society members to Parliament and to attend an event focused on learning disability and neurodiversity awareness.

I hope my constituents all enjoyed the Easter weekend, spending time with family, friends and loved ones.

If I can help with anything, please contact me.

Nigel Huddleston  
Droitwich and Evesham MP

**FLEXIBLE FINANCE OPTIONS AVAILABLE**  
to make life easier for you



**LIVING SPACES**  
Orangeries, Conservatories & Glass Rooms



**WINDOWS**  
Exclusive UPVC & Aluminium Range



**FRONT & BACK DOORS**  
Composite, UPVC, Solid Core & Aluminium



**DOORS**  
French, Patio & Bi-Folding Doors

**MIDLANDS' LARGEST SHOWROOMS**  
**OPEN 7 DAYS A WEEK**

**Kidderminster Showroom**  
Worcester Road  
Kidderminster DY10 1JR  
Tel: 01562 814677

**Worcester Showroom**  
36 Carden Street  
Worcester WR1 2AT  
Tel: 01905 888372

**5STARWINDOWS.CO.UK**



# Welcome to a life made easier.

Discover an easier life with McCarthy & Stone. Independent living in your own well-appointed, warm and cosy apartment. With friendly neighbours, there if you need them.

Enjoy a welcome that feels like coming home. You'll soon see why so many of our homeowners tell us they wish they'd moved sooner.



## SHIRLEY Wheatley Place, Stratford Road B90 4GZ

Located in sought-after Shirley, features include flexible care packages and an on-site bistro serving fresh meals daily<sup>^</sup>. There's an Estates team on-site 24/7 and the communal facilities include a roof terrace and wellness suite.

Prices from £279,995<sup>#</sup>



## STRATFORD-UPON-AVON Romeo Place, Alcester Road CV37 9WF

Set in a thriving medieval town, immerse yourself in an area steeped in history and charm. The beautifully finished, low maintenance retirement apartments, offer contemporary living in a secure community.

Prices from £287,500<sup>#</sup>



## STUDLEY Priory Place, Alcester Road B80 7AR

Located in the village of Studley, with a host of local amenities on your doorstep. Facilities include a communal lounge and landscaped gardens. You're also looked after by the friendly on-site manager.

Prices from £199,995<sup>#</sup>



## STOW-ON-THE-WOLD Hawkesbury Place, Fosseway GL54 1FF

In the heart of Stow-on-the-Wold, this development's staff are on site 24/7 and tailored support services<sup>^</sup> are available. Communal facilities include a lounge, bistro<sup>^</sup> and wellness suite.

Prices from £359,995<sup>#</sup>

Properties near you for the over 55s - to buy, rent or for Shared Ownership<sup>#</sup>



Scan or call for more information  
**0800 882 1750**  
mccarthyandstone.co.uk



Homes England Information correct at time of print. <sup>#</sup>Extra charge applies. <sup>^</sup>Subject to availability. See [mccarthyandstone.co.uk/shared-ownership](https://mccarthyandstone.co.uk/shared-ownership) for more details. SC023581

**McCarthy & Stone**  
Welcome Home.



LEFT: Sally Jobson, Mark Whitworth and Coun Brandon Clayton with residents from Brockhill involved into in the wildlife project. Pictures by Tristan Harris © Bullivant Media Group Ltd.

RIGHT: The vibrant information board was unveiled on Tuesday.



# Marking five years of success

RESIDENTS in Brockhill gathered on Tuesday for the official unveiling of an information board, citing five years of work on a wildlife project. Those living in Dairy Lane and Appletree Lane were inspired by the Pollinator Initiative which Redditch Borough and Worcestershire County Councils signed up to. The scheme aims to reverse the decline in pollinating insects, such as bees and butterflies, and improve habitat options for these insects, small mammals and birds. Redditch still has much green space and Brockhill now joins other similar small scale projects

in Headless Cross, Webheath and Barn Green in Bromsgrove. These highlight the importance of preserving and protecting even small spaces to maintain connectivity for wildlife as green areas become more fragmented. The Brockhill wildlife project began five years ago and since then, 30 trees have been planted, including five birch trees, six fruit trees and an oak tree for Queen Elizabeth II's Platinum Jubilee in 2022. More than 10,000 spring flowering bulbs and wild flowers, including daffodils and wild garlic, and eight metres of hedging have also been introduced and there have

been bird boxes installed in the area. The project was the brainchild of Mark Whitworth and Shirley Jobson. They then approached Coun Brandon Clayton to discuss the idea. Coun Clayton used £1,500 of his Worcestershire County Council divisional fund. Then he and fellow councillor Coun Salman Akbar donated another \$500, as did Coun Joe Baker. Further funds were raised through residents coming together for plant and produce sales. Shirley said: "We hope the trees and bulbs will flourish largely unaided in future years, enhancing

the area for wildlife and residents. "However, we also recognised from the start that year-round awareness of the needs of nature was critical and for this we wanted an information board to show the many passers-by what could be seen in the area. "We also want to show the area is cared for, encouraging respect for its many - sometimes unseen - inhabitants." Shirley and Mark thanked Redditch Borough Council and Worcestershire County Council for their generous funding, in particular Coun Clayton who, the pair said, had been incredibly supportive from the start. And they thanked

local residents and the Brockhill Residents Association. Shirley added: "It has been a real community effort which this spring has brought its rewards." The information board was unveiled by Coun Clayton. He said: "The area has changed so much since when Mark and the residents first approached me about it. "It has been turned into a habitat for wildlife and a place of beauty for everyone to enjoy for many years to come. "Everybody involved should all be proud of what has been achieved - I wish there were more areas like this across Redditch."

## INTERNATIONAL METALS & CABLE RECYCLING LTD

We purchase all Ferrous and Non Ferrous Metal Batteries and Cables

---

### Collection Service Available

---

Long Marston Road, Long Marston, Stratford Upon Avon, Warwickshire, CV37 8AQ

01789 721 288

info@imcr.co.uk

Open Mon/Fri - 8am - 5pm



- Food Stalls
- Children's Activities
- Model Boats Sat & Sun
- Now in its 15th year



- Dog Show on Monday
- Fun for all the family
- Arts & Crafts

# Vines Park Droitwich WR9 8LB

**Bank Holiday Weekend**  
**Friday 1<sup>st</sup> May 5pm - 11pm**  
**Saturday 2<sup>nd</sup> May, Sunday 3<sup>rd</sup> May 10am - 11pm**  
**Monday 4<sup>th</sup> May 10am - 5pm**

- **Real Ale & Cider Bar all weekend**
- **Around 50 different beers and ciders**
- **Live Entertainment every day**
- **Canal boat rides during the days on 'Pamela May 2'**
- **The 'Great Droitwich Duck Race' Bank Holiday Monday 4.30pm**



**Private/Hire Boats Welcome**



**Trading Boats Welcome**



**\* FREE ADMISSION \* LATE NIGHT BAR \* FAMILY EVENT**

**[strichardsfestival.co.uk](http://strichardsfestival.co.uk) | [wbdc.org.uk](http://wbdc.org.uk) | [Facebook](https://www.facebook.com/strichardsfestival)**

This event is run by The Worcester Birmingham & Droitwich Canals Society with support from Wychavon District Council and Droitwich Town Council

the **fareys**  
FAREWELL TOUR



**THE ALBANY THEATRE**

**Sunday 10th May**

**Tickets from BOX OFFICE 024 7699 8964**

**OR ONLINE [www.albanytheatre.co.uk](http://www.albanytheatre.co.uk)**

FOR THE FINAL TIME hear them sing all their hits including SWEET 16, I WILL LOVE YOU, THE GREEN FIELDS OF FRANCE, RED ROSE CAFE, THE OLD MAN, LEAVING NANCY, CLARE TO HERE etc.

# MP welcomes jobless strategy

REDDITCH MP Chris Bloore has welcomed a major new Government package to tackle youth unemployment and reduce the number of young people not in education, employment or training (NEETs), following his contribution in a debate on the issue.

Speaking in the House of Commons, Mr Bloore (pictured) said businesses and young people in Redditch strongly welcomed the measures announced, describing them as a 'long overdue' step change after years of inaction.

He highlighted the UK had fallen behind other OECD countries for more than a decade in reducing NEET levels, pointing to deep-rooted structural challenges in education and public health.

The MP said: "The businesses and young people in my constituency strongly welcome what the Secretary of State has announced today.

"For too long, Britain has fallen behind when it comes to helping young people into work, education or training.

"That is the result of structural failings in education and public health that were simply not addressed.

"Young people in Redditch deserve better and so do our local businesses, who are crying out for skills and talent."

During the debate, Mr Bloore also chal-

lenged opposition claims and underlined the scale of the issue, stressing that meaningful reform was long overdue.

He also pressed Ministers on how young people and employers in Redditch could access and benefit from the new support, ensuring the town was at the forefront of delivery.

The Government's package aims to reduce the number of NEETs by improving pathways into employment, strengthening skills provision and working more closely with employers to create real opportunities for young people.

Responding in the Chamber, the Secretary of State agreed youth unemployment was a long-term challenge and emphasised the new approach represented a decisive

break from the past - with a clear focus on delivering better outcomes and rebuilding opportunity.

He added: "This Government is sending a clear message - we believe in our young people and we are determined to give them a better future.

"Young people in Redditch have huge potential but for too long the system has let too many of them down.

"I'll be working closely with local schools, colleges, employers and youth organisations to make sure we seize this opportunity - creating real pathways into education, training and good jobs."



# JOHNSONS

Part of the Coach Travel Group

Treat yourself to a great-value overnight getaway

**From just £175 per person, enjoy:**

- ✓ Travel from our Henley-in-Arden departure point
- ✓ One-night stay with breakfast at 3 or 4★ hotels

**YORK**

Friday 23rd October 2026  
Hotel: 4\* Delta Hotels York

**LIVERPOOL**

Friday 14th August 2026  
Hotel: 4\* Hard Days Night Hotel

**LEEDS**

Friday 24th July 2026  
Hotel: 4\* Crowne Plaza Leeds

**MANCHESTER**

Friday 7th August and Friday 2nd October 2026  
Hotel: 4\* Copthorne Hotel Manchester Salford Quays

Also view our 2026 day trips by scanning the QR code below



**Express Breaks Now On Sale from £175!**

More Express Breaks to be announced

**SUMMER SAVINGS ARE HERE**

Make your next getaway even better with **£50 OFF all holidays this May & June.**

From scenic UK breaks to seaside escapes and city favourites, let us take care of the journey while you sit back, relax and enjoy the experience.

- Comfortable coach travel
- Carefully planned itineraries
- Friendly, experienced drivers
- Quality hotels in great locations

Use code: **SUMMER50** and enjoy **£50 OFF ALL holidays departing in May & June.\***

**Don't miss out your summer escape is waiting.**

View our 2026 Coach Holidays by scanning the QR code below



**Start planning now – Choose from a wide range of trips, including summer days out, with return coach travel and admissions included**

**Book today: 01564 510 046 [www.johnsonscaches.co.uk](http://www.johnsonscaches.co.uk)**



**REDDITCH PALACE THEATRE SAT 6 JUNE**  
**BOX OFFICE: 01527 65203**  
[redditchpalacetheatre.co.uk](http://redditchpalacetheatre.co.uk)



BARRY STEELE'S

# ROY ORBISON STORY



**THE CIVIC CENTRE – STOURPORT ON SEVERN SATURDAY JUNE 20**  
**BOX OFFICE: 01299 823339 [thecivicstourport.co.uk](http://thecivicstourport.co.uk) – [barrysteele.com](http://barrysteele.com)**

Join acclaimed performer Barry Steele for a powerful celebration of two music legends – Roy Orbison and the iconic supergroup Traveling Wilburys. Experience an unforgettable night of classic hits, world-class musicianship, and the timeless sound of some of the greatest songs ever written.



avonroofing6@gmail.com • www.avon-roofing.co.uk

PROFESSIONAL • RELIABLE • TRUSTED

- ◆ New roofs
  - ◆ Re-roofs
  - ◆ Roof repairs
  - ◆ Tiles/slates replaced
  - ◆ Fascias
  - ◆ Cladding
  - ◆ Soffits
  - ◆ Gutters
  - ◆ Down pipes
- ◆ Flat roof solutions
  - ◆ EPDM rubber roofs
  - ◆ Chimneys rebuilt
  - ◆ Re-pointing
  - ◆ Re-bedding
  - ◆ DRY VERGES
  - ◆ DRY RIDGES
  - ◆ EAVES PROTECTION SYSTEMS (EPS)

**15% OFF**  
when mentioning this advert

*Commercial roof projects undertaken*

*Free Quotations - All Work Guaranteed*

Call Jake on 07389 844 856 or 01789 507 131 for a free quotation

Find us on Google

# A powerful case for being winner

A BROMSGROVE home has been crowned the UK's energy saving champion after winning an eco-friendly challenge.

The contest was launched by UK housebuilder Pye Homes during Big Energy Saving Week.

Across the four-week challenge, residents who participated in the eco challenge, monitoring their normal energy usage for two weeks.

They were then provided with a guide to energy-saving tips and tricks, which they could then introduce for the subsequent fortnight.

Whichever household saw the biggest net percentage reduction in energy consumption would be crowned the winner.

The Martin family from Bromsgrove was crowned the challenge's winner, significantly reducing their energy by 58 per cent after implementing the expert tips and tricks.

As well as the kudos of being the UK's energy saving champion, the Martin family won a £400 eco-conscious prize bundle.

The pack featured Shark NeverChange5 Air Purifier Compact Pro, Ninja CRISPI 4-in-1 portable glass air fryer and a £100 online voucher for eco-conscious retailer Peace With The Wild. The challenge was launched to reflect Pye Homes' strong focus on energy efficiency and sustainability across its various housing developments.

Karis McMahon-Lane, Marketing, manager for Pye Homes and Blenheim Estate Homes, said: "We're thrilled to crown the winner of our 2026 Energy Saving Challenge."

"Their dedication shows how small, practical changes at home can make a real difference to



energy consumption, household bills, and the environment as a whole."

Competition winner, Hannah Martin, added: "Taking part in this competition has been a brilliant experience - it has definitely made me mindful of how much energy can be unnecessarily consumed. I've noticed a big reduction in my bills from making a few small changes - washing on a lower temperature and lowering the thermostat by a few degrees truly does make a difference."

Tom Lane and Hannah Martin won the energy saving competition. s



## SATURDAY 23RD MAY ONE DAY! ALL THE HITS!

# STOKE PRIOR Tribute FESTIVAL GATES OPEN MIDDAY

DOUBLE TAKE THAT



ULTIMATE DUA LIPA

oh-aces

MISS WINEHOUSE & Me

THE FILLERS  
THE FAKE KILLERS

### SCAN QR CODE FOR TICKETS

[www.tickettailor.com/events/stokepriorsportscountryclub](http://www.tickettailor.com/events/stokepriorsportscountryclub)



Westonhall Road, Stoke Prior, Bromsgrove B60 4AL | [www.stokeprior.club](http://www.stokeprior.club)

**BOOK NOW!**

The CQC rated us as Outstanding in Caring!



# BY YOUR SIDE, EVERY STEP OF THE WAY

This spring, discover the comfort of **Cofton Park Manor Luxury Care Home**, where independence is encouraged and reassurance is always close at hand. Our dedicated team is there every day - offering a helping hand, a friendly face, or simply someone to walk alongside you.

Book your private tour today, and find out more about our **all-inclusive\*** package:

**0121 826 3214 | [enquiries@hamberleycarehomes.co.uk](mailto:enquiries@hamberleycarehomes.co.uk)**

Cofton Park Manor, 466 Lickey Road, Cofton Hackett, B45 8UU



**HAMBERLEY**

CARE HOMES

\*Terms and conditions apply.

just go! holidays **03332 342 514** Quote **osg**  
 ★★★★★ Trustpilot **Reader Travel**



**Great Little Trains of North Wales & Portmeirion**

Departing **Mon 6 Jul '26**

Enjoy a visit to the unique, Italianate village of Portmeirion and discover the historic railways and meandering tramways of North Wales on this fantastic five-day break, based in Llandudno, the 'Queen of the Welsh Resorts'.

**SO MUCH INCLUDED...**

- ✓ Return coach travel from **Redditch, Bromsgrove**
- ✓ 4 nights at the Baytree Hotel, Llandudno (JG3 rating) with dinner & breakfast
- ✓ Entertainment some evenings
- ✓ Heritage journeys on the Welsh Highland Railway, Great Orme Tramway & Ffestiniog Railway
- ✓ Free time in Llandudno
- ✓ Excursions to Caernarfon & Portmeirion

**5 Days by Coach only £549**

Single Supplement £80

These packages are subject to Just Go! Holidays terms & conditions. Coach bookings are protected by Bonded Coach Holidays & the Association of Bonded Travel Organisers, Travel Ltd. All holidays are ATO, protected No.10689. Prices are per person, based on two people sharing a room & are based on bookings made up to 7 days post publication, after which prices may fluctuate. Choices of date, hotel, airport or pick up location may incur a supplement. Please see website or call for full details.

Visit us online at **justgoholidays.com/OSG**

033 numbers are free within inclusive minutes packages otherwise standard rates apply.



**Northumberland, Hadrian's Wall, Holy Island & Alnwick Castle**

Departing **Mon 27 Jul '26**

Explore the very best Northumberland has to offer on this captivating break! Enjoy excursions to the famous Roman site, Hadrian's Wall and the unique Holy Island of Lindisfarne, two of the most significant and unspoilt sights in the UK.

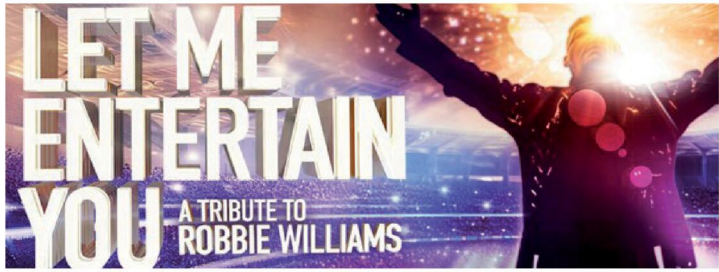
**SO MUCH INCLUDED...**

- ✓ Return coach travel from **Redditch**
- ✓ 4 nights at the Leonardo Hotel, Newcastle Quayside (JG3 rating) with dinner & breakfast
- ✓ Guided tour of Hadrian's Wall
- ✓ Excursions to the Holy Island of Lindisfarne, Alnwick Castle, Hadrian's Wall & Chesters Fort

**Optional excursion to Durham (£15pp)**

**5 Days by Coach only £499**

Single Supplement £120



Let Me Entertain You is coming to the Palace this June. s

**He's been expecting you...**

A BRAND new theatre production celebrating the music of Robbie Williams is heading to the Redditch Palace Theatre for one night only this June, as part of a major UK tour, writes *Ashleigh Osborne*.

Let Me Entertain You is an all-new live show packed with the songs that defined a generation, promising an unforgettable evening of music, nostalgia and high-energy entertainment.

Robbie Williams remains the UK's biggest-selling artist of the 1990s and the self-

proclaimed 'king of entertainment'.

This spectacular theatre show pays tribute to his remarkable career, featuring chart-topping hits including *Angels*, *Candy*, *Rock DJ*, *Feel* and many more favourites that audiences still know every word to.

The production revisits Robbie's roots with classic Take That anthems such as *Could It Be Magic* and *The Flood*, celebrating the era that launched him to stardom.

Fun and energetic, *Let Me*

*Entertain You* celebrates the music, spirit and showmanship of one of Britain's most iconic performers.

From stadium-filling anthems to heartfelt ballads, the show brings Robbie's greatest hits to life in a dynamic live concert experience.

It is billed as a feel-good night out for fans of all ages.

Visit [redditchpalacetheatre.co.uk](http://redditchpalacetheatre.co.uk) or call the box office, on 01527 65203, for tickets.

The show starts at 7.30pm on June 4.

**Green light for town padel centre**

A NEW indoor padel club has been granted planning permission to open in Redditch.

Padelheim, founded by local entrepreneurs Jack Stevens and Sam Lissaman, is set to be built at a unit

in the South Moons Moat Industrial Estate.

The new venue will be fully indoor, allowing year-round play and will offer court booking. The business plans to offer coaching, social events, corpo-

rate days, and inclusive sessions aimed at groups such as retirees, beginners and families.

With planning secured, work is expected to begin imminently and doors are set to open in the summer.

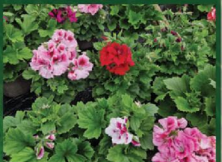
**OPEN 7 DAYS A WEEK**  
**Mon-Wed: 8.30 am-5.00pm**  
**Thurs-Sat: 8.30am-5.30pm**  
**Sunday: 8.30am-4.30pm**

**Lower Chaddesley Corbett, Kidderminster DY10 4QN**  
**Tel: 01562 777 003**

**SUMMER COLOUR AT ROWBERRYS**

Massive choice of **Fuchsias, Basket Plants, Geraniums, Begonias**

**Regal Pelargoniums**  
**Only £5.99 each or 2 for £10**



**DON'T FORGET TO VISIT OUR RESTAURANT**



**Great value home cooked meals**



**ROWBERRYS**

**The Growing Nursery, Farm Shop, Butchery, Deli and Restaurant**

*Spring into action @ Rowberrys*

**GET YOUR GARDEN SUMMER READY**

Thousands of Trees, Shrubs, Perennials, Alpines & Herbaceous plants



**Perennials from just £3.25 each or 10 for £30**

**2 ltr Perennials, Herbaceous and Shrubs from £6.99 or 3 for £20!**

**GROW YOUR OWN WITH ROWBERRYS**  
 Huge choice of Fruit, Vegetable & Herb Plants **AVAILABLE NOW**



**Don't forget our Farm Shop, Deli & Farm Butchery**

# SALE

BROMSGROVE'S

**OAKLANDS**  
FURNITURE

**MASSIVE CLEARANCE EVENT - EVERYTHING REDUCED!**

Top-quality furniture at a fraction of the price!

Trusted BRAND names with extra discounts on made to order items from -

**Sherborne Upholstery, Silentnight Beds,  
Harrison Spinks, Global Home,  
Cotswold Chairs and many more.**

Suites - Sofas - Accent Chairs - Rise Recliner Chairs - Beds - Mattresses -  
Bedroom Furniture - Adjustable Beds - Dining Sets - Oak Furniture - Lounge Furniture

**ONSITE CLEARANCE OUTLET!**

**BIG BRAND NAMES AT UNBEATABLE PRICES**

**DFS • Tetrad • La-Z-Boy • Parker Knoll • Sofology  
Furniture Village, Dunelm and much more!!**

(Cancelled Orders • Ex-Display • Clearance Stock)

**SAVE UP TO 60% OFF!**

Your Trusted Local Family Run Furniture Store with over 35 years' experience!  
Built on Experience, Grown on Trust.

**EARLY BIRD OFFER**

**COMPLETE SET**



Was £1,399

**NOW ONLY £999**

Limited Time Offer  
Available to view in store  
for Immediate Delivery

Was £699  
Now only  
**£499**



**Complete Double Bed + 2 FREE DRWS  
+ FREE HEADBOARD**

Was £999  
NOW ONLY  
**£549**



**OAK TABLE + 4 CHAIRS,  
ONE SET ONLY AVAILABLE**

Was £499  
Now only from  
**£249**



Large selection of adjustable chairs + stools  
in a variety of colours and fabrics

Was £899  
Now Only  
**£699**



**Dual action Rise Recliner Chair  
in stock for immediate delivery**

**XL 3str.**  
Was £919  
only **£499**



**AMAZING RETRO STYLE SOFA**

**2 corner 1**  
Was £1,499  
now **£1,199**



**EX-DISPLAY  
HIGH END CORNER GROUP**

**2str.**  
Was £599  
only **£399**



**SAVE UP TO 40% OFF  
CLEARANCE SOFAS**

**3str.**  
Was £799  
now **£499**



**LUXURY GREEN VELVET SOFA**



**WORCESTERSHIRE'S Biggest Furniture Warehouse**

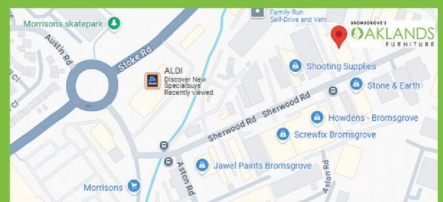
- ✓ **YOUR LOCAL INDEPENDENT FAMILY RUN FURNITURE RETAILER**
- ✓ **OVER 150 SUITES ALWAYS IN STOCK FOR IMMEDIATE DELIVERY**
- ✓ **WANT TO SAVE £££'S OFF STORES PRICES WITH NO WAITING?**

**Oaklands Furniture**  
Units 34-35, Aston Fields Trading Park  
Sherwood Road, Bromsgrove B60 3DW  
[www.oaklandsfurniture.co.uk](http://www.oaklandsfurniture.co.uk)  
**Tel: 01527 872202**

**Open 7 Days a Week:**

- Monday to Friday: 9am – 5pm
- Saturday: 10am – 5pm
- Sunday: 10am – 4pm

**Follow us on:**  
Facebook: @OaklandsFurniture  
Instagram: @oaklandsfurniture



Oaklands Furniture Limited is an Introducer Appointed Representative of Ideal Sales Solutions Ltd, t/a Ideal4Finance. Ideal Sales Solutions Ltd is a credit broker and not a lender (FRN 703401). Finance available subject to status. The rate offered is always provisional and will depend upon your personal circumstances, the loan amount and the term.



# LIVING HISTORY FESTIVAL

## Saturday 25 & 26 Sunday April 2026

### It's Time ...to Time Travel!



More info and to book advanced discounted daily tickets  
[www.avoncroft.org.uk](http://www.avoncroft.org.uk)

Avoncroft Museum, Stoke Heath, Bromsgrove Worcestershire,  
B60 4JR - 01527 8931363 - Reg. Charity no. 2411644

# Chapter and verse of a heaven-sent production



John Nightingale as Leo, Tristan Harris as St Francis and Marc Phillips as Elias. s

A BOURNVILLE church's spiritual and affectionate love letter to the story and teachings of St Francis of Assisi was so astounding the audience sat silent and spellbound for all 85 divine minutes.

'The 20:26 to Assisi' was quite simply the best community production I have ever seen as the cast and crew's passion for this story and its messaging of humility, serving the poor and love for all washed off of the stage and into the audience's souls.

The play, at St Francis Church, starred Tristan Harris as the Saint of Assisi and was put on stage to mark the 800th anniversary of his death.

Given the production's small scale with many actors playing numerous roles on one small stage, it was truly extraordinary how immersive and engrossing the experience really was, as the director Malcolm

McGivan made full use of the beautiful church setting he had to work with.

The opening sequences were a masterpiece in visual storytelling - no line was uttered by any actor for more than five minutes and yet the movements on stage and the visual expressions on the performers' faces painted the entire picture for you.

In just his second play, Harris perfectly reflected the spiritual positivity and compassion St Francis embodied throughout his life.

Everything, from his hopeful, declarative, preacher-like line delivery to his body language - his head always tilted slightly upwards, towards the heavens - was completely on point.

But he also showed himself to be a marvellous dramatic actor towards the end of the play, delivering a highly emotional and compelling monologue during the 'Stigmata' scene as his character goes through

an excruciatingly painful ordeal.

John Nightingale was a fantastic character actor, giving two separate roles such rich and layered personalities - you forgot you were watching the same man perform them both.

He is blessed with impeccable line delivery as both Francis's father and the Saint's follower, Leo - most of the lines that stuck with me most were his and his performance had much to do with that.

Huge credit to Mandy Nayak, who not only takes on three roles in one play - Francis' mother, the Mayor of Gubbio and Sultan al-Malik al-Kamil - she offered strong and unique performances as all three.

Her emotional early showing as Francis' heartbroken mother, despite not uttering a line in the role, was a real highlight in physical acting.

Sally Stevin honestly would not have looked out of place acting alongside legends of the calibre

of Alec Guinness in her impactful showing as Pope Innocent III.

Every grand declaration she uttered and expressive hand movement was dripping with the same marvellous theatrical projection and charisma that made 1950s Hollywood such a delight.

The greatest compliment I can give Marc Phillips - as both Bishop Guido and St Francis's follower Elias - is that he left the audience hanging on his every word and gives the lines and the importance of the story the reverence they deserve.

The story of St Francis and the lessons it teaches were hugely important to him and that is reflected in his showing on stage.

Kate Palmer, as Lady Clare, wonderfully displayed the desperation of her character to leave her previous life behind and her eagerness to follow St Francis on his spiritual journey of poverty and prayer. She also interacted wonderful-

ly well with Harris, Phillips and Nightingale in the play's funniest scene, when she gives up her luxurious possessions and changes into more basic attire.

And a word to Malcolm McGivan as the Saracen soldier, who gave a confident and memorable showing as the stern and suspicious man.

As fantastic as the cast was, this play would not have been as impactful without the quite heavenly original music by Rob Pinnock and a very clever decision to have actors record 'The Testament of Francis' and put it on the airwaves at points throughout the play.

Both were strokes of audio genius and gave the feeling that the heavens were raining down and blessing this production.

The original script was written by Malcolm Morse and he, the directors and all the backstage crew are from south Birmingham.

Ryan Smith

## Enjoy Exclusive, Evergreen Spring Edition of

# Seasons



Following on from the fantastic response to our debut 'Winter' edition of Seasons, we're delighted to announce that Seasons 'Spring' edition has now Sprung.

As the days grow longer and our towns, villages and the countryside emerge from the long dark days of winter, we are all enjoying the arrival of the 'Spring' of 2026.

Pick up a copy locally for free, or simply browse on line  
[www.seasons-magazine.com](http://www.seasons-magazine.com)

The 'Spring' edition of Seasons is a celebration of all things 'local'. It's uplifting, inspiring and quintessentially local across the three counties of Warwickshire, Worcestershire and the West Midlands.

The beautifully glossy A5 magazine is freely available in print, from a major supermarket near you - and, the 'Spring' edition of Seasons is also available 24/7 on line and...it's being showcased across all of our local Observer and Standard Newspapers, websites and social media platforms, and will continue to be so, for the next 12 months.

Enjoy the exclusive, evergreen, 'Spring' edition of Seasons by logging on to [www.seasons-magazine.com](http://www.seasons-magazine.com)

You can still browse the 'Winter' edition of Seasons 24/7 and now, you can enjoy the 'Spring' edition of Seasons too!

If you'd like your business to be featured in the next edition of Seasons, or if you'd like more details - just call **01527 588688** and speak to Kelly, Caroline, Roisin, Debra, Paul, Gareth or Sharon.

Seasons magazine is brought to you, by your local Observer and your local Standard Newspaper Team



Learn from yesterday,  
live for today,  
hope for tomorrow.  
Anonymous



# Family Notices

Tel: 01527 588688 Email: reception@bullivantmedia.com

**BIRTHDAYS**

**HAZEL DOWNES**



**Happy 90th Birthday**

20th April 2026  
Lots of Love  
from all your Family & Friends  
xxx

**DEATHS**

**COLLIER**  
William Morris  
'BILL'

Aged 82 years  
Our much loved Brother Bill sadly passed away on Thursday 9th April 2026.  
Bill will be dearly missed by all his Family. Frances, Irene, Jeanette and David, Brother in Law Jim and Nieces and Nephews.  
XXX

**MEMORIAL SERVICES**

**As Time Goes By**

YOUR LOCAL FAMILY RUN  
MEMORIAL SUPPLIER

Headstones, Cremation Tablets,  
Additional Inscriptions and  
Renovation Work

Web: [www.astimegoesby.org.uk](http://www.astimegoesby.org.uk)  
Email: [kfporter@blueyonder.co.uk](mailto:kfporter@blueyonder.co.uk)

**Please call 01527 550505**

To arrange a home visit or to find out our opening times

Unit 5, Dunlop Road, Hunt End Industrial Estate  
Redditch B97 5XP

"MEMORIALS THAT REFLECT A LIFETIME"

**FLORAL TRIBUTES**



519 Evesham Road,  
Crabbs Cross,  
Redditch, B97 5JP

Bespoke funeral flowers personally  
designed for your loved one

[flowers@nurseryshopredditch.co.uk](mailto:flowers@nurseryshopredditch.co.uk)  
[www.nurseryshopredditch.co.uk](http://www.nurseryshopredditch.co.uk)

**Tel: 01527 550 700**



**IN MEMORIAM**

Birthday Memories

**RAY DALBY**

Sunrise 21st April 1920  
Sunset 3rd April 1985

Heavenly birthday wishes to a special person.  
Always remembered in our hearts, never forgotten.

love and god bless  
Pat and families

Dad our day 21st April  
Wish I could turn the clock back

Love Jacky  
XXXX

**DEATHS**

**Fallon**

James  
'Jim'

Passed away peacefully on 3rd April 2026, aged 83 Years.  
Devoted Husband to Carol. Dad to Sarah and Father in Law to Rob. Dad to Janie and cherished by Carlo. Paps to Katie and Megan and friend to many.

A funeral mass will take place at Our Lady Of Mount Carmel Church on Monday 27th April 2026 at 12.30pm followed by burial at the Abbey Cemetery.  
Family flowers only please, donations if so desired to the Alexandra Hospital who cared for Jim so kindly in his final days.  
(cheques made payable to League of Friends) may be sent to :

Thomas Brothers, The Funeral Directors,  
Birchfield House, 494 Evesham Road,  
Redditch, B97 5JF

01527 547777  
Thank you

**FUNERAL DIRECTORS**

**James Giles and Sons Ltd**  
Est. 1916  
The Complete Funeral Directors

Allow our family to care for your family

[www.jamesgilesandsonsltd.co.uk](http://www.jamesgilesandsonsltd.co.uk)

**BROMSGROVE** 01527 872318  
**DROITWICH** 01905 783188  
**STUDLEY** 01527 852213

PRE-PAID FUNERAL PLANS AVAILABLE

**DEATHS**

**HILL**

Lionel James  
MBE

Sadly passed away on Friday 10th April, 2026 aged 88 years.

Beloved Husband to Helen. Much loved Dad to Edward and Kathy and Father-in-Law to Carole and Gary. Wonderful and loved Grandad to Louise, Alex, Katie and Harry.

A service to celebrate Lionel's life will take place at St. John the Baptist Church, Feckenham B96 6HR on Wednesday 13th May, 2026 at 11.00 a.m.

Please wear a splash of colour. Family flowers only please, donations if so desired to Birmingham Children's Hospital and Acorn's Hospice may be sent to:

Thomas Brothers,  
The Funeral Directors,  
494 Evesham Road,  
Redditch,  
B97 5JF  
01527 547777  
Thank you

If you have a message for a loved one, call our team on

**01527 588688**

If you have a message for a loved one, give our team a call

**01527 588688**

**FUNERAL DIRECTORS**

*An Independent Family Owned Funeral Directors*

**THOMAS BROTHERS**

Family owned funeral homes in Redditch, Wythall, Alvechurch, Bromsgrove & Alcester.  
We provide a friendly, dignified service paying special attention to detail.

**REDDITCH • BROMSGROVE**  
01527 547777 01527 831700

**WYTHALL • ALVECHURCH • ALCESTER**  
01564 822001 0121 445 3422 01789 330939

"A family concern"

[www.thomasbrothers.co.uk](http://www.thomasbrothers.co.uk)  
email: [admin@thomasbrothers.co.uk](mailto:admin@thomasbrothers.co.uk)



Learn from yesterday,  
live for today,  
hope for tomorrow.  
Anonymous



# Family Notices

Tel: 01527 588688 Email: reception@bullivantmedia.com

**FUNERAL DIRECTORS**

**FUNERAL DIRECTORS**

**MORTONS** FUNERAL DIRECTORS

**“Where saying goodbye means everything”**

Whatever style of funeral you're looking for, whether direct cremation, traditional, contemporary, or somewhere in between, you can put your trust in us.

Available 24 hours, seven days a week

**0121 459 9111**

Offices in Northfield, Cotteridge and Rubery





Professionally qualified independent funeral directors  
For more information, visit [mortonsfunerals.co.uk](http://mortonsfunerals.co.uk)






## R.L.Rea

Funeral Directors Ltd.

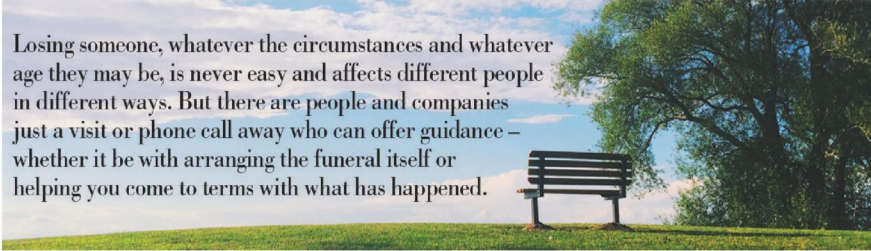
- A Family Firm Established in 1967
- Your Local, Independent Complete Funeral Directors and Memorial Masons
- Dedicated to Providing a Personal & Professional Service 24 hours a day, 365 days a year
- Private Chapel of Rest
- Pre-arranged Funeral Plans Available
- Direct Cremation Available

[www.rlreafuneraldirectorsltd.co.uk](http://www.rlreafuneraldirectorsltd.co.uk)  
[info@rlreafuneraldirectorsltd.co.uk](mailto:info@rlreafuneraldirectorsltd.co.uk)



**BROMSGROVE 01527 831723**

Losing someone, whatever the circumstances and whatever age they may be, is never easy and affects different people in different ways. But there are people and companies just a visit or phone call away who can offer guidance – whether it be with arranging the funeral itself or helping you come to terms with what has happened.




Whatever the occasion, why not send your loved ones a message.... *Call our team on* **01527 588688**



# Classified

www.directory247.co.uk

TELEPHONE 01527 588688 FACSIMILE 01527 584371

## PUBLIC NOTICES

### PUBLIC NOTICES

#### BROMSGROVE DISTRICT COUNCIL & REDDITCH BOROUGH COUNCIL

Advertisement Key: ADVSTD = Wider Publicity, CA = Conservation Area, DEP = Departure, FPS = Footpath Setting, LB = Listed Building.

**26/00349/FUL** FPS  
Site: 376 Alcester Road, Burcot, Worcestershire B60 1PP.  
Proposal: Proposed side extension and associated works.

**25/01224/FUL** CA LB ADVSTD  
Site: Quinton Cottage, Beoley Lane, Beoley, Worcestershire B98 9AN.

Proposal: Alterations to extend existing building to the rear to incorporate a Bedroom, Bathroom and Kitchen.

**26/00201/FUL** CA ADVSTD  
Site: 20A Filly Hill Road, Barnt Green, Worcestershire B45 8LG.  
Proposal: Proposed two storey front extension, single storey rear extension, ridge height increase with new pitched roof to main house and the garage with dormers to facilitate first and second floor extensions, with associated render/cladding and photovoltaic panels, and proposed new entrance/exit gates.

**26/00295/FUL** FPS DEP  
Site: Pool Farm, Cumpfields Lane, Redditch, Worcestershire B97 5PW.  
Proposal: Three bedroom self build home on garden land to Pool Farm. The proposed development does not accord with the provisions of the development plan in force in the area to which the application relates.

**26/00320/FUL** CA  
Site: 37A High Street, Belbroughton, Worcestershire DY9 9ST.  
Proposal: Rear two storey extension.

**26/00209/FUL** FPS  
Site: 12 Fox Lane, Bromsgrove, Worcestershire B61 7NL.  
Proposal: Proposed two storey and single storey front, side and rear extensions, front dormer, and rear patio.

**26/00301/FUL** ADVSTD FPS  
Site: 54 Dagtail Lane, Redditch, Worcestershire B97 5DT.  
Proposal: Proposed external and internal alterations to a dwelling and the conversion of an outbuilding as an Annex.

**25/01218/LBC** LB CA ADVSTD  
Site: Quinton Cottage, Beoley Lane, Beoley, Worcestershire B98 9AN.  
Proposal: Alterations to extend existing building to the rear to incorporate a Bedroom, Bathroom and Kitchen.

Application forms and plans may be inspected online <https://publicaccess.bromsgrovedredditch.gov.uk/online-applications>

Comments can be submitted online, via email to [newplan@bromsgrovedredditch.gov.uk](mailto:newplan@bromsgrovedredditch.gov.uk) or in writing Planning Services, Redditch Town Hall, Walter Stranz Square, Redditch, B98 8AH

Comments should be made within 17 days of the date of this publication. The Council does not acknowledge comments but will make these available for inspection online.

### PUBLIC NOTICES

#### Warwickshire County Council

##### ROAD TRAFFIC REGULATION ACT 1984

Warwickshire County Council has made the following Temporary Traffic Orders:

##### D5434 LOWER HASELOR LANE, HASELOR

**Order Effect:** Road closed to vehicular traffic between its junctions with Pelham Lane and Trench Lane. In addition, the Weight Restriction on C46 Pelham Lane, Haselor between Wood Lane and Walcote Road/Lower Haselor Lane will be temporarily suspended.

**Reason for Order:** Carriageway patching and associated works, 09.30hrs-15.00hrs.

**Order Commences:** 20 April 2026 for up to 18 months.

**Anticipated Completion:** 23 April 2026.

**Access & Diversion:** Trench Lane, A46, A435, B4089 (Arden Road, Tything Road West, Kinwarton Farm Road, Captains Hill, School Road, Village Road), Pelham Lane and vice versa.

**Contractor:** Balfour Beatty, Tel: 03452 415 302.

##### HOO MILL ROAD, KINWARTON

**Order Effect:** Road closed to vehicular traffic.

**Reason for Order:** To enable water network survey works.

**Order Commences:** 24 April 2026 for up to 18 months.

**Anticipated Completion:** 24 April 2026.

**Access & Diversion:** No diversion available.

**Contractor:** Chevron TM Ltd, Tel: 0330 008 0820.

Warwickshire County Council proposes to make the following Temporary Traffic Orders:

##### CHURCH LANE, HASELOR

**Order Effect:** Road closed to vehicular traffic.

**Reason for Order:** Works to repair or replace defective manhole cover and frame.

**Order Commences:** 7 May 2026 for up to 18 months.

**Anticipated Completion:** 7 May 2026.

**Access & Diversion:** No diversion available.

**Contractor:** Customer Solutions Plus, Tel: 07918 389363.

For all of the above temporary orders, pedestrian access to and egress from properties and land situated adjacent to the length of road to be closed will be maintained at all times. Vehicular access will be maintained where possible.

To report any problems with these works or for further details of our current & planned roadworks visit our website [warwickshire.gov.uk/roadworksmap](http://warwickshire.gov.uk/roadworksmap) or call us 01926 412515.

S Duxbury, Director of Strategy, Planning & Governance, Shire Hall, Warwick CV34 4RL Date 17 April 2026

### PUBLIC NOTICES

All your latest information on Planning Proposals, Traffic Notices, Goods Vehicle Operator Licences, Licences To Sell Alcohol and Probate Notices



## PUBLIC NOTICES



Keeping you up to date with all the latest information on Planning Proposals, Traffic Notices, Goods Vehicle Operator Licences, Licences To Sell Alcohol, Probate Notices.....

### MISCELLANEOUS

**RECLINER CHAIR**  
electric rise & recline £169 Manual recline chair £60 High seated chair £40 Can deliver 07703 925662

**BEDS NEW** Doubles £95 Singles £59 King size £159. Second hand doubles £49 Singles £29 Fridges £49 Freezers £59 Can deliver 07703 925662

### MOBILITY SCOOTER

**'Liteway Balance Plus'**  
Breaks into 3 pieces for car. Range 10 miles. Charger. New batteries. Could deliver. **£320** **01789 778174**

**SUFFOLK** colt 12inch lawnmower 4stroke working order £20 01527 876942

**DEMIJOHNS** brown glass £4 clear glass £3 all good condition 01527 528646

**JUWEL** Rio Aquarium 125 litre with cabinet lighting & heater excellent condition £150 01527 528646

**HORNBY** 00 gauge Britannia Class 7MT steam loco + tender driven in BR green and late crest "John Of Gaunt" running no 70012. In very good unmarked condition and smooth runner. Replacement box. £45 Tel 07415322794

**HORNBY** 00 gauge Class 9F steam loco + tender driven in BR black, with late crest, running no 92207. Very good unmarked condition and runner. Not in original box. £45 Tel 07415322794

**HORNBY** 00 gauge "bubble car" (Ref R2510) DCC ready Class 121 in BR blue, Driving Motor Brake, running no W55021. In excellent condition, test run only, otherwise unused, complete with original box and instructions. £55. Tel 07415322794

**STRAWBERRY** plants pack of 6 Elsanta plants £2.50 tray of 60 large plugs £20. 01905 778926

**2** Folding Electric Bikes. 20inch diameter wheels with chargers and manuals £185 each. Tel 07895176657

**CAST** iron fire basket W16" D10.5" H10" never been used £35 01527 872540

**TRAVEL** Cot £10 07902292926

### MISCELLANEOUS

16" wheels, in immaculate condition no marks only used twice £150 tel 01527 872540

**LAWNMOWER** Rotary Qualeast GWO £25 07743929558

**COFFEE** Machine Nescafé Dolce Gusto £20 07743929558

**CAST** Iron Singer sewing machine base £120 ono 01562 741727

**VARIOUS** 35mm cameras OFFERS 01562 741727

14 x 28 grm balls navy 4ply wool £5.50 01562 741727

**TWO** Lamb creep feeders 24 feeding slots £250 & £230 07813443675

**PAIR** Zenith 10 x 15 binoculars in leather case £30 all offers considered 0121 744 7579

**ILFORD** Sporti 4 camera excellent condition in leather case £10 0121 744 7579

### MISCELLANEOUS

AS new spray on pressure sprayer for fence painting etc 320 0121 744 7579

**OVER** 20 Hornby train / accessories which need renovating back to life hence price £20 lot 0121 744 7579

**FREE** freezer ideal as secondary freezer for garage etc, size 23.5 in wide x 22 in deep x 33.5 in high. Tel 0121 704 9252

**JOULES** ladies wellies, Navy with cerise flowers. £10.

**ZARA** black wellies with silver / black check top. £15.

Both new / Size 8 07840800965

**GOLF** Balls 100 balls for £22 VGC & clean 01564 784171

**ELECTRIC** Titan Polie Hedge Trimmer £35 07821939021

**JUWEL** Rio aquarium 125 litre with cabinet, lighting, heater and extras excellent condition £150 01527 528646

### WANTED

**\*\*WANTED: Vinyl Records CDs Cassettes**  
**Vintage or New \*\***  
Seeking classic rock, jazz, indie and rare finds. Cash paid  
Call or text: 07765 142354 Or 01527 893992  
Or email: [welston@live.com](mailto:welston@live.com)  
Paul (Albatross & Doomed Records)

### WANTED

**WANTED**  
**Motorcycles and Scooters**  
Any cc, condition or age, good prices paid  
**07944 781 933 | 01926 257 643**

## SOMETHING TO SELL?

Raise some extra cash and make someone else's day by selling your unwanted items

Advertise them in **The Observer** or **The Standard**

Simply fill in the coupon below, tick the appropriate box, enclose your cheque or credit card details if required, and we'll do the rest - Or alternatively email your free ad to: [freeads@bullivantmedia.com](mailto:freeads@bullivantmedia.com)

Free Lineage (Items upto value £500)  Paid for Boxed Ad (Items of any value)

Details of Item For Sale for Publication (No Pets or Livestock or Firearms please):  
(MAX 15 WORDS)  
.....  
Tel: .....

Details (Not for Publication):  
Mr/Mrs/Ms .....Initials.....Surname .....

Address.....  
.....  
Postcode .....

Tel: ..... Mobile .....

Email: .....

I enclose cheque, payable to Bullivant Media Group Ltd, value £.....  
or alternatively  
Please debit my card for £..... Visa/Mastercard/Maestro/Delta  
Credit Card Number.....  
Exp: .....Start.....  
Sec No: (Last 3 digits)..... Issue No. (if applicable).....

Send to Bullivant Media Group Ltd, Webb House, Church Green East, Redditch, Worcestershire. B98 8BP or email your advertisement to [freeads@bullivantmedia.com](mailto:freeads@bullivantmedia.com)

**3 PIECE SUITE**  
brown leather,  
perfect condition  
as new  
**£550**  
can deliver  
Telephone  
10234 567890

(£5.75 incVAT example boxed advertisement)

# Classified

www.directory247.co.uk

TELEPHONE 01527 588688 FACSIMILE 01527 584371

## SERVICES

### BUILDERS

#### BRICKWORK H. BOOT

All Types  
Garages  
Garden Walls  
Extensions  
Fully Qualified Tradesman  
Call

**07778 705570**  
**07789 064138**

WhatsApp Email: hanstheboot@hotmail.com

### CLADDING/ GUTTERING

#### My Clean Gutters



**100% SATISFACTION**

**GUTTERING FROM £39**

**100% BEST QUALITY**

Freephone: **0800 0463373**  
Birmingham: **0121 652 0374**  
Redditch: **01527 900 787**  
Mobile: **07376 915 527**

www.my-cleangutters.co.uk  
mycleangutters777@icloud.com

### DECORATING & PAINTING

#### DA SMITH DECORATORS

Interior & exterior  
painting & decorating  
Property Repairs

40 years experience

Email: Derekalansmith@live.co.uk

**07941 689 655 • 01527 836227**

### GARDENING SERVICES

#### JFS Garden Services

Fencing, Turfing, Hedge Cutting, Tree Surgery,  
Stump Grinding, Jungles Cleared,  
Grass Cutting/Regular Mowing,  
Domestic, Commercial enquiries welcome.

For a free Competitive Quote

**07977 497 440 • 01527 458 104**  
www.jfslandscapes.co.uk

### GARDENING SERVICES

#### GRASS CUTTING

COVERING REDDITCH,  
STUDLEY & BROMSGROVE

No job too small  
Locally based

Call **07512 852290**

### GARDENING SERVICES

#### Dragonfly GARDENING

Specialists in plant care and pruning

- Grass Cutting
- Hedge Trimming
- Regular Maintenance

Your local expert plantsman

33 Years Experience in Horticulture  
with a local major Garden Centre

Registered Waste Carrier

CRB CHECKED • FULLY INSURED

**07814 510797**

**01527 878965**

Reliable Friendly Service

### HANDYMAN

#### LOCAL HANDYMAN AVAILABLE

in Redditch

Good rates offered

Experienced builder by trade

Call Steve on

**01527 69309**

**07541 279957**

### LANDSCAPING

#### D.A. TAYLOR

LANDSCAPING

Fencing • Slabbing • Conifers  
Hedge Work

CLEARANCE

Gardens • Rubbish • Sheds • Large  
& Small Trees Felled, Lopped and  
Shaped • Turfing • Shed Base

FREE QUOTATIONS

**01527 870914 - 0771 768 2816**

### KITCHENS

#### S.W INSTALLATIONS

Kitchens &  
Bathrooms

FREE DESIGN &  
QUOTATION

QUALITY KITCHENS  
& BATHROOMS  
SUPPLIED & FITTED

PLUMBING,  
CARPENTRY, TILING,  
WORKTOP & DOOR  
REPLACEMENT

(Supply & fit, supply only or fit only)

LOCAL TRADESMAN

20YRS EXPERIENCE

NO JOB TOO SMALL

**07971 684 353**

### LOGS

#### LOGS FOR SALE

Mainly Ash

£120, £220, £390  
loads delivered

Builders bag of  
logs £120 delivered

Card, cash or  
cheque payments  
taken

Tel **07477 778536**  
or **07983 441818**

See load sizes at our  
website

www.rftimber.uk



**GIVE A LOCAL EXPERT A CALL!**

### PLUMBING

#### SB 4 Plumbing & Heating

- Gas Fires
- Gas Cookers
- Gas Central Heating and Maintenance.
- Gas Appliance Landlord/home
- Safety Checks.
- Plumbing faults/installation.

Email: [stuart4heating@gmail.com](mailto:stuart4heating@gmail.com)

[www.sb4plumbing.co.uk](http://www.sb4plumbing.co.uk)

Call me for domestic work

MOBILE

**07951 485 329**

### PERSONAL SERVICES

Hi Ladies, would you  
like some male  
company going for a  
meal, theatre etc.  
Genuine person.

Contact Ralph on  
**07770580748**

### REMOVALS/ STORAGE

#### MAN WITH A VAN REMOVALS

House moves local & long distance  
Collection and delivery  
Single items to full van loads  
House Clearances  
Collection of unwanted household items

Waste Carrier No: CBDU69835

T: **01527 514 666** M: **07843 854 289**  
ManWithaVanRemovalsRedditch.co.uk

### ROOFING

#### WEATHER GUARD ROOFING PROFESSIONALS

**10% OFF  
ALL ROOFING  
REPAIRS**

No job too big or  
too small

Fully guaranteed  
and insured

Written quotes  
available

Specialists in all types of Roofing,  
Complete Roofs, Ridge Tiles,  
Lead Work, Chimneys, Fascias,  
Soffits, Guttering, Gutter Cleaning



Mobile: **07467 159012**

Office: **01527 962 972**

[info@weatherguardservices.co.uk](mailto:info@weatherguardservices.co.uk)

[weatherguardservices.co.uk](http://weatherguardservices.co.uk)

### ROOFING

#### POWELLS ROOFERS & BUILDING SERVICES

- Roof Tiling • Garage Roofs • Flat Roofs
- Chimneys rebuilt and re-pointed
- Garage Conversions • Driveways
- Building Maintenance • Extensions

Powells Roofing & Building Services are a local  
Redditch based company

C&G Qualified with over 15 years local roofing and  
building services experience

For more details, please call  
**07952 797 973 or 01527 454325**

### SKIP HIRE

#### A&S SKIPS

A Division of A&S Developments (Redditch) LTD

• 2, 4 & 7 yard skips

• Skips with drop front doors guaranteed

• Prompt and reliable service

• Competitive rates

Tel **01527 459 238** • Mob **07788 112028**

[www.asskips.co.uk](http://www.asskips.co.uk)

Waste carrier No. CBDU 169 207

#### Redditch Skip Hire Ltd

For all your domestic and  
commercial skip requirements



4-40 yard skips available • Drop fronts -  
please ask when ordering

Open or enclosed 90% of waste recycled



• No room for a skip.  
Book our man with a van  
service

• Prompt, reliable service

• 2 hour arrival slot

• Next day service

Call **01527 63644**

Or visit us at:

[www.redditchskiphire.com](http://www.redditchskiphire.com)

Waste Carrier No. CBDU122354

### TREE SURGEONS



Call within 48  
hours to receive  
a 20% Discount

Tree & Landscape Specialists is a trusted, professional company with  
a great reputation to uphold and have over 20 years experience in the trade.

• Tree Work • Paving • Fencing • Artificial Grass • Astro Turf • Patios

No job is too big or too small • Fully Insured



Contact us today FREEPHONE: **0800 747 1704** • LANDLINE: **01527 906 577**

[treeandlandscapespecialists@gmail.com](mailto:treeandlandscapespecialists@gmail.com)

[www.treeandlandscapespecialists.co.uk](http://www.treeandlandscapespecialists.co.uk)

PHOTO BY Google

NEED AN EXPERT?  
THEY'RE HERE IN OUR CLASSIFIED PAGES  
- ALL WAITING TO HELP!  
GIVE THEM A CALL!



# Appointments

www.careerfinder247.co.uk

TELEPHONE 01527 588688 FACSIMILE 01527 584371



www.taurustaxis.co.uk

**Are you Looking To Top Up Your Salary or Pension?**

Then we could Help !!

## DRIVERS REQUIRED

With or without Taxi Badge / Vehicle  
Clean Licence Essential

**Holiday pay will be accrued and paid**

We also require

### PSV DRIVERS

with valid CPC card & training, part time hours,  
very good rates of pay.

**For Further Details Please Call**

**07773 022 239**



## DRIVERS

Full and part time drivers required for home to school contracted transport. Competitive rates of pay and flexible working hours.

Company vehicle provided, and full assistance obtaining your private hire licence will be given.

**For further details please call**

**01527 60000**

or email [accounts@a2b60k.co.uk](mailto:accounts@a2b60k.co.uk)

## Gold Crest

Require the following in the Redditch, Bromsgrove, Droitwich and Kidderminster areas

## Part Time Drivers

Transporting children to school.  
Vehicle provided.

– ALSO –

## Passenger Assistants

Part time hours with or  
without experience.

**Contact 07399 848 639**



**We can offer you....**

**GREAT LOCAL COVERAGE  
IN PRINT & ONLINE**

Contact Caroline or Kelly on

**01527 588625 • 01527 588749**

[caroline.birkenhead@bullivantmedia.com](mailto:caroline.birkenhead@bullivantmedia.com)  
[kelly.taylor@bullivantmedia.com](mailto:kelly.taylor@bullivantmedia.com)

**Bullivantmedia**  
GROUP LIMITED

# Motoring

www.carfinder247.co.uk

TELEPHONE 01527 588688 FACSIMILE 01527 584371



## Custom MINI hits market

**MINI has custom-crafted a special one-off John Cooper Works Convertible example for a longtime MINI enthusiast.**

Dubbed the 'MINI.01', this road-legal one-off showcases a striking two-tone colour scheme and over 50 exclusive details throughout its interior and exterior design.

Created especially for a devoted MINI enthusiast from the United States, the MINI.01 represents a special moment for MINI Plant Oxford - with a new depth of factory-led personalisation.

The exterior features a distinctive split, triple-layered two-tone paint finish in Midnight Black and a unique shade of metallic green personally chosen by the customer - a combination never seen before

on a MINI. The exclusive model is equipped with factory-fitted JCW accessories, including JCW front and side winglets - which are colour-matched and embellished with unique details - and 18-inch JCW Rallye Spoke alloy wheels.

The two-tone paint extends to the rear diffuser, while the wing mirrors are decorated in black and white stripes. Further additions such as 'MINI SUPER SPECIAL 001' wording above the front wheelarch, and a MINI.01 badge on the boot lid continue to set the vehicle apart.

A Union Jack soft-top roof features as a tribute to MINI Plant Oxford and the brand's British heritage.

Green colour-matched accents continue inside the cabin, with the unique colour decorating elements

such as the seat inserts, toggle bar trim, decorative dashboard strap and Harman Kardon speaker housing.

For a subtle yet effective contrast, the air vents, cupholder surrounds and door handles are finished in matte white.

'MINI.01' badging can be found throughout the interior, including on the six o'clock steering wheel element, the wireless charging unit and on the floor mats.

Upon entering and exiting the vehicle, passengers are greeted with backlit doorsill plates with the 'MINI SUPER SPECIAL .01' inscription as another reminder that this is a truly special MINI.

Markus Grüneis, CEO of Plants Oxford and Swindon said: "This custom-crafted John Cooper Works

Convertible represents a fantastic collaboration between the MINI product and design teams, the local market, and Plant Oxford production. We're delighted with the result and craftsmanship that showcases what our team in the UK can achieve."

With the creation of the MINI.01, the MINI brand further cements its commitment to vehicle personalisation, while showcasing manufacturing excellence at the home of MINI, Plant Oxford.

**JAPANESE  
CARS  
WANTED**

• HONDA • TOYOTA • SUZUKI  
• SUBARU • MAZDA  
1999 - 2014 MODELS

PLEASE CALL DOMINIC  
**07581 566064**

**HAGLEY CARS**  
EST. 40 YEARS

**SELLING YOUR CAR?  
WE PAY THE MOST**

We can visit you and pay immediately  
Same day service

**CAR BUYERS LTD**  
**07831 245 313**

**LANDMARK**  
LANDSCAPING & DRIVEWAYS  
FREEPHONE 0800 191 0282  
www.landmarkdriveways.co.uk  
Honey Orchard, Doverdale, Droitwich, WR9 0QB

- Block Paving • Patio's • Slabbing • Driveways
- Tarmacadam • Brickwork • Turfing • Graveling
- Resin Bond • Paths • Forecourts • Fencing

All Work Guaranteed for 3 Years - No Deposit Required

ebark Cheekatrade.co.uk Google Instagram

# Standard SPORT



9 772040 128006

Published by Bullivant Media Group Ltd, Webb House, Church Green East, Redditch, Worcestershire B98 8BP  
Printed by Newsquest, Newspaper House, Osney Mead, Oxford, Oxfordshire OX2 0EJ

**Dragonfly**  
GARDENING  
Specialists in plant care and pruning  
Your local expert plantsman

33 Years Experience in Horticulture with a local major Garden Centre

CRB CHECKED • FULLY INSURED  
07814 510797 | 01527 878965  
Reliable Friendly Service

www.droitwichstandard.co.uk/sport BRINGING YOU ALL THE LATEST SPORTS NEWS AND VIEWS FROM THE AREA

## Spa put five past Westfields to secure home play-off semi-final

by Aaron Sutcliffe  
aaron.sutcliffe@bullivantmedia.com

**FOOTBALL:** DROITWICH Spa secured a home semi-final in the play-offs following a comprehensive 5-1 victory at Westfields in midweek.

A brace from Alex Dugmore and further goals from James Baldwin, Ben Tilbury and Will Dallaway handed the Saltmen home advantage in the play-offs at Allpay Park.

The victory means Droitwich sit third in the Hellenic League Premier Division table with one game left to play this season.

Spa can finish no lower than third in the table but can still leapfrog second-placed Roman Glass St George in the table if they better the result of their play-off rivals on the final day.

Droitwich opened the scoring on 34 minutes when Dugmore teed up Baldwin for a close-range finish after Charlie Tilley delivered a free-kick into the box as a deflection took the ball out of goalkeeper Ryan Smallwood's reach.

And Spa doubled their lead less than a minute later as Josh Hurdman drew a foul in the box and Tilbury fired the resulting penalty into the bottom left corner from 12-yards out.

The Saltmen extended their lead five minutes into the second period when Baldwin drove



a low ball across the face of goal and Dugmore smashed home to score his 100th goal for the club.

Spa added a fourth goal

five minutes later as Dallaway tapped in Hurdman's low cross at the back post.

And Dugmore doubled his tally for the game on 72 minutes

when he placed a shot into the net from Jack Brighton's tantalising cross from the right.

Westfields scored a consolation goal eight minutes from

time as substitute Raiyan Ahmed found the bottom left corner from outside the penalty area.

Spa won a second penalty late on after Westfields brought down Perry Moss in the box only for Smallwood to deny Dugmore a hat-trick from the spot.

That came after Droitwich secured a 3-1 derby win at play-off rivals Worcester Raiders last weekend which sealed a top-five finish for the Saltmen.

Hurdman scored his 50th goal for Spa to put Droitwich ahead at the Diary of a Debt Collector Stadium only for a stunning goal from Jake Collins to draw the home side level after the break.

The Raiders had captain Jordan Murphy sent off on 73 minutes after he received a second yellow card for a foul on Dugmore.

And the Saltmen took full advantage of the extra man as Dugmore and Tilbury scored late goals to seal the club's place in the play-offs.

Droitwich finish the season with a home game against Mangotsfield United on Saturday, April 18 with kick-off at 3pm at the King George Playing Fields.

Alex Dugmore's header put Spa ahead against Worcester. Picture by Mathew Mason.

**Yokohama**  
Authorised  
Tyre  
Dealer



**JEFFERIES TYRES**  
Est 1988



TRADE TYRE PRICES TO THE PUBLIC

**OVER 3,000 NEW & PART USED TYRES IN STOCK**  
Serving Trade & Public for over 35 Years  
Alloy Refurbishment & Alloy Repair Service  
Hunter Alignment & Wheel Balancing Available

**01527 831829**  
Unit 4 - 22 Sherwood Road - Bromsgrove - B60 3DR



**EDWARDS CAR REPAIRS**

- Engine tuning
- MOT preparation and submission for final MOT
- Cam belt replacement
- Clutch Replacement
- General repairs
- Welding
- Servicing
- Insurance work welcome
- Supply and fit all parts for all makes & models

All types of work undertaken, why not give us a call or just drop in



Rear of 8 Hewell Road, Barnt Green, Birmingham, B45 8NE  
0121 445 5414  
Email - enquiries@edwardscarrepairs.co.uk