

DROITWICH Standard

TREE & LANDSCAPE Specialists

Contact us today
FREEPHONE: 0800 747 1704
LANDLINE: 01905 886 566
treeandlandscapespecialists@gmail.com
www.treeandlandscapespecialists.co.uk

Friday, May 8th 2026 Week 19

[f droitwichstandard](https://www.facebook.com/droitwichstandard)

www.droitwichstandard.co.uk

[@DroitStand](https://twitter.com/DroitStand)

Your **FREE** edition - just pick one up and keep up with the news



MOT TEST CENTRE

THE HOME OF CLASS 4 MOT'S IN DROITWICH

Berry Hill MOT Centre Ltd

Unit 8 Northbank Berry Hill Ind Est
 Droitwich WR9 9AU Tel: 01905 771831

Professional DPF Reconditioning



Diesel Particulate Filter

Changes to lido plan prompt resignations

by **Ryan Smith**
ryan.smith@bullivantmedia.com

A ROW has broken out over the \$12.5million plan to transform Droitwich Spa Lido.

Matt Nicol has resigned as chair of the Droitwich Spa Place Board, claiming although the organisation had supported the initial proposal to invest in the lido, it had been shut out of discussions and only saw a revamped plan in November.

Councillors agreed in 2024 to redevelop the site and, since then, detailed work has been undertaken to finalise the design for the pool.

In a resignation letter addressed to Wychavon Council leader councillor Richard Morris, Mr Nicol said: "The place board has never opposed investing in the lido. It is the jewel in the crown of this town.

"What we cannot support is spending \$12.5million of taxpayers' money on a scheme that does not deliver what the town was promised - [that is] \$4.5million more than the scheme the public voted for in December 2024.

"When the cost goes up by that much, the quality and ambition of what is delivered should go up with it. In this case, it has gone down."

Mr Nicol claimed the scheme now

Now that's what I call an eye-catching new kit



Specsavers has sponsored Droitwich FC under-11s, providing kits for the team. s

A DROITWICH junior football team has been boosted by the town's Specsavers, which is providing sponsorship until the end of next season, writes Zaynab Hamdy.

The locally owned and run Droitwich Specsavers, in St Andrew's Square, has partnered with the junior side to help support the next generation of the town's footballers.

The opticians has provided full kit for Droitwich Football Club under-11s, enabling the team to focus on the footie.

Specsavers Droitwich store director Emma Singh said everyone is delighted to support grassroots sport, which brings communities together and helps young people build confidence, stay active and develop life skills."

Visit specsavers.co.uk/stores/droitwich or call 01905 790660 for more about Specsavers Droitwich.

being proposed does not have the right layout, 'flow', changing facilities or a food and beverage offering that reflects either the investment or the vision the public endorsed.

Five other members of the Droitwich Spa Place Board have also quit over the same concerns.

Before a final decision, Mr Nicol requested the design be shared publicly so the people of Droitwich Spa can see what has changed since

December 2024 and what was being proposed in its place.

Coun Morris said he was saddened Mr Nicol had chosen to resign as chair of the place board.

He added, the council has a responsibility to deliver the investment as, with local government reorganisation taking place in April 2028, any significant delay risks losing the opportunity altogether.

Wychavon Council says the overall

vision for the lido remains unchanged from the one presented to the public during a consultation exercise.

The size of the cafe has increased but will stay in its current position rather than relocating to the south end of the site, as originally proposed. The council said moving the cafe would cost considerably more and could have a greater impact on Lido Park.

Instead, a snack kiosk will be added

to the south end of the site, to serve lido customers as well as users of the park, including the new splash pad.

A new bistro, overlooking the pool, will also be created on the upper floor of the art deco building.

A planning application is expected to be submitted this summer and it is hoped the new-look Lido will be ready to use by summer 2028.

A final design will be released to the public in the near future.

Avery | Droitwich Mews CARE HOME

Spring Fair

Friday 29 May | 2pm - 4pm

Welcome the season at our Spring Fair, with stalls, games, refreshments and entertainment. A perfect chance for residents, families and the local community to come together and enjoy the celebrations.

01905 934182 averyhealthcare.co.uk

Mulberry Tree Hill, Droitwich Spa, Worcestershire, WR9 75S

SUPERVALUE FURNITURE & BED CENTRE

YOUR LOCAL DROITWICH INDEPENDENT TRADER

SAVINGS THROUGHOUT STORE



FREE ACCESSORY PACK



Medical grade foam



UPTO 30% OFF

SEE OUR MAIN ADVERT ON PAGES 10 & 11

New-look medal for hospice fun-runners

A NEW medal has been revealed for this year's Wythall and Hollywood Fun Run.

Ahead of the event, taking place at Wythall Park on June 7, the race's ambassadors Sonia Tudor and Mat Wright were the first to see the new design when they officially unveiled it last week.

Every runner taking part will still receive a medal to act as a memorable keepsake for their

achievement of running either five or 10 kilometres.

The run is for everyone – whether regular runners or people wanting a jog in the sun.

The Wythall and Hollywood run will raise funds for the charity Acorns and brings people together.

It is important money is raised for the hospice due to its exceptional work helping children have a good life while in a hospice.

Lisa McNally, director of public health at Worcestershire County Council, said: "The team behind the Wythall and Hollywood Fun Run put so much care into making the event even better every year.

"This new, metal medal will really take pride of place in people's medal collection.

"I also want to say a heartfelt thank you to our run ambassadors.

"They give their time, energy and enthusiasm so generously and what they do is vital to the success of community events like this."

The Wythall and Hollywood Fun Run is organised by Wythall Community Association and Events of the North and supported by the county's public health team.

Go to wythallhollywoodfunrun.org.uk to sign up for the event.



Sonia Tudor and Mat Wright with the new medals. s

Electricity inspections planned across the B98 postcode area

by Ashleigh Osborne
ashleigh.osborne@bullivantmedia.com

NATIONAL Grid Electricity Distribution (NGED) representatives will visit properties in Redditch this month as part of a safety inspection programme.

Domestic and small-business customers in the B98 postcode will receive visits from NGED-approved contractors to check service ter-

mination points in properties are working as they should.

The service termination point, or 'cut-out', is the point where the main incoming electricity service cable and fuse are situated – in most cases, near the meter.

The cut-out is usually situated in a meter cabinet on the outside of most properties built since the 1980s, though it could be located within a property, next to the electricity meter or a customer's consumer unit.

Inspectors will visually inspect NGED and other energy suppliers' equipment and record details.

No disassembly work will be carried out and customers' power supplies will not be interrupted while inspections occur.

NGED is aiming to complete 400,000 inspections of cut-outs in homes and small businesses across the Midlands, South West and South Wales every year, in a rolling programme over the next 20 years.

The organisation has an Office

of Gas and Electricity Markets (Ofgem) licence obligation to carry out inspections to ensure cut-outs at low-voltage-metered properties are operating safely.

Richard Brady, NGED's policy engineer who is heading the inspection programme, said: "The UK is recognised internationally as having one of the most resilient and safe energy systems and this inspection programme underlines our commitment to the highest safety standards. Inspectors will visually

examine cut-outs to check they are working as they should, taking photos and notes for our records.

"In the unlikely event of a defective cut-out being found, NGED engineers will be sent to carry out repairs, at no cost to the customer."

Inspectors will be from a company called A Coole Electrical and will be clearly identifiable as working for NGED. They will be able to present ID and authorisation to enter properties.

SHOWCOACH tours

27 years of coach tours to top shows

June

6 THE ROYAL MINT & CARDIFF	£47
11 LES MISERABLES Arena Spectacular Birmingham	£98
18 ROYAL ASCOT LADIES DAY	£79/£135
20 BLENHEIM PALACE FLOWER SHOW	£57
26 WESTON SUPER MARE	£29

July

11 RHS BADMINTON FLOWER SHOW	£65
14 MATILDA The Musical Birmingham	£79
18 BARMOUTH	£33

August

1 THAMES RIVER CRUISE & WINDSOR	£49
9 EMMERDALE VILLAGE TOUR	£67

Holidays with SHOWCOACH

NORFOLK DISCOVERY 5 DAY TOUR - Departing 17 August.
George Hotel Norwich, Excursions Included **£595**

ENGLISH RIVIERA BREAK 5 DAYS - Departing 5 October.
Palace Hotel Paignton, Excursions Included **£585**

Pick ups @ Redditch, Bromsgrove and Hopwood (subject to route)

**For details and to book phone 01527 542389
or email enquiries@showcoachtours.co.uk**

Visit www.showcoachtours.co.uk for the full programme



Studley Glass

GLASS • MIRRORS • WINDOWS

We are your local glass and mirror suppliers.

We manufacture glass units of all types in our factory.



-  All types of safety glass.
-  Energy rated glass units.
-  Leaded glass designs.
-  Greenhouse glass.
-  Woodburner glass.
-  Stair glass.
-  Misted units.
-  Supply and replace.
-  Table top glass.

Visit our salescounter or give us a call.

01527 857786

Local Service • Expert Advice • Quality You Can Trust

Sales@studleyglass.com

Www.Studleyglass.com

PUBLIC NOTICES



For all your latest information on
Planning Proposals, Traffic Notices,
Goods Vehicle Operator Licences,
Licences To Sell Alcohol and Probate Notices...

See
page
30





N-ice job: Gill Punt has raised £2million for Cancer Research by running marathons dressed as a polar bear. s

by **Ryan Smith**
ryan.smith@bullivantmedia.com

A BROMSGROVE PE teacher has brought the total she has raised for cancer charities – while dressed as a polar bear – to £2million, after running the London Marathon.

Gill Punt began running for Cancer Research UK after her dad Mike died of bile-duct cancer in 1999, aged 56.

After almost 29 years of fundraising, Gill passed the £2million mark in London.

Teacher Gill, who also got the chance to meet three-time London Marathon winner Paula Radcliffe, said: "The run was horrendous and magnificent all at once.

"The crowds were unbelievable and, with no time pressure, I could 'high-paw', bear-hug and squeeze in interviews all the way round – whilst melting in my furry furnace of a costume!

"Thank you so, so much for all your support; £2million means more research, more early detection and more hope for all those touched by cancer."

In 2016, Gill ran the London Marathon in the same costume, breaking the world record for the fastest marathon run in a full-bodied animal costume.

She also ran the polar night marathon in Norway in the same costume, again earning herself a Guinness World Record – that time for the fastest ice marathon dressed as a mammal.

The indefatigable runner has completed the world's six major marathons, having run 26.2-mile courses in London, Chicago, New York, Tokyo, Boston and Berlin.

Gill's exploits have garnered attention and she has appeared on programmes such as *Lorraine*.

Gill holds a BEM and won the BBC Hereford and Worcester Make a Difference award for fundraising, after being nominated by her daughter.

Cancer Research UK has been very grateful of Gill's efforts over the years, describing her feats as "nothing short of incredible".

Undaunted, Gill is now targeting the £3million milestone.

Visit [fundraise.cancerresearchuk.org/page/multi-million-marathoning-mission? to donate](http://fundraise.cancerresearchuk.org/page/multi-million-marathoning-mission?to donate).

Machete taken from 13-year-old

A TEENAGE boy was arrested and a machete seized in Taysfield Road, in Northfield, on Sunday.

Officers from West Midlands Police's guardian taskforce detained a 13-year-old boy and recovered the weapon.

The teen has been referred to the youth offending team where work will begin,

with the aim of preventing him from re-offending.

Project guardian tackles knife crime and youth violence, with a particular emphasis on reducing knife crime through plain-clothed operations, high visibility patrols and positive engagement with young people.

Dead puppy is found in stream

A DEAD puppy was found in a stream in Droitwich and the RSPCA is appealing for help in finding out what happened.

The dark grey and black, short-haired bull breed male was found in water-located behind Wye Close on Sunday.

The puppy is estimated to have been between eight and 10 weeks old and is possibly a Cane Corso or Staffordshire Bull Terrier. RSPCA animal rescue

officer (ARO) Meg Cross, who is making enquiries following the incident, said the RSPCA was grateful to the person who found the poor dog and contacted the animal charity.

"It must have been very distressing to find," said Meg. "A member of the public who walks their dog in the area most days said they didn't see the puppy last Friday but found the pup on their next walk, on Sunday."

Meg added, the dog may have been dead for longer, due to the condition he was found in. The puppy was collected by ARO Cross and examined by a vet.

The dog was not micro-chipped and there were no external injuries.

Due to the suspicious circumstances the dog was discovered in, the charity has urged anyone who can help establish what happened to call it on 0300 123 8018.

JC GLAZING & REPAIRS LTD

A FRIENDLY, HONEST & RELIABLE SERVICE...

Have your double glazed units misted up?

Don't despair help is here!

WE CAN REPLACE THEM

Call us for a free quote

ALL WORK GUARANTEED

- Locks
- Hinges
- Mirrors
- Misted Glass
- Safety Glass
- Decorative Glass
- Cat Flaps in Glass
- Conservatory Repairs
- Fascias, Soffits & Guttering
- UPVC Windows, Doors & Conservatories
- Log Burner Glass Supplied



ANYTHING TO DO WITH GLASS & WINDOWS

A-RATED WINDOWS SUPPLIED & FITTED



UPGRADE YOUR OLD U.P.V.C. WINDOWS

We can replace your existing glass with Energy Saving Glass & refurbish your frames at half the cost of new.

Patio Doors French Doors
Front Doors Back Doors
Composite Doors

Card payments accepted 

Call Jon on 01527 857 786 or 07931 198 152



SPECIALISTS IN ALL ASPECTS OF ROOFING

New Roofs - Roof Repairs - Flat Roofing
Fascia, Soffits & Guttering - Cladding
Moss Removal Chimney / Ridge Tile Repointing
Local References Available - Free Quotations

For a FREE quote, contact the local company you can trust

Birmingham - 0121 667 8938
Redditch - 01527 906 586

Park House, Bristol Rd South, Rednal,
Birmingham B45 9AH

www.longbridgecladdingandroofingltd.co.uk
sales@longbridgecladdingandroofingltd.co.uk





On track for some classic rock

A NIGHT of nostalgic rock will take place at Bromsgrove's Artrix next Saturday, May 16.

Classic Rock Revival, which starts at 7.30pm at the venue, is a celebration of the greatest rock hits ever written.

Songs made famous by legends Queen, AC/DC, Fleetwood Mac The Eagles, Led Zeppelin and more, will be performed with the passion they were sung with years ago.

The show will recreate the spirit of classic guitars and unforgettable choruses, providing a fantastic atmosphere and high-energy live music.

With tickets selling quickly, people are being urged to book tickets sooner rather than later.

A spokesperson for the event said: "Whether you grew up with these songs or just love great live music, this is a night that hits all the right notes."

Visit: artrixbromsgrove.co.uk or call 01527 361324 for more information and tickets, which are £25.25.

The Classic Rock Revival comes to Artrix next Saturday. s

Taking the learning into the open

A NEW outdoor learning area has been installed at a Redditch school.

Volunteers from David Wilson Homes Mercia went to Abbeywood First School to create a nature reserve to the school's specifications.

The transformation included the installation of new fencing, raised garden beds, a pond, picnic benches, bird feeders, a hedgehog house and a mud kitchen, creating a stimulating, accessible space which will be used daily by pupils across the school.

Zoe Gilmour, Abbeywood First School principal, said everyone was incredibly grateful to David Wilson Homes and all the partners involved in the project.

"The dedication, generosity and teamwork shown by the volunteers have transformed our outdoor space into something truly special.

"This garden and pond area will have a lasting impact on our pupils, supporting learning, wellbeing and a love of the natural world.

"It stands as a wonderful example of how community partnerships can make a real difference to children's lives."

The project was delivered through partner-

ship working - Shannonside completed the groundwork and e3p donated a mud kitchen and provided additional on-site support.

Further contributions were made by Carpenter Landscapes, SJ Richards Ltd, and Alliance - all helped bring the vision to life.

Ms Gilmour added: "The new space provides opportunities for curriculum-linked outdoor learning, environmental awareness, sensory play and social development, supporting both academic outcomes and pupil wellbeing.

"The collective kindness and thoughtfulness of everyone involved has created not only a beautiful outdoor space, but also a legacy that will benefit our children for years to come."

Helen Lewis, David Wilson Homes Mercia managing director, said the firm was incredibly proud to be part of the fantastic project.

"The results are so wonderful to see and we also want to thank our fantastic team of volunteers for truly getting stuck in, as well as all the supporting businesses who lent a hand."

The team celebrated the revamped learning area. s





Direct Floors
Home service

Carpets | Vinyls | Laminates | Wood

Shop at home for your new carpet and flooring and receive up to 30% off shop prices. We are COVID SAFE with 1,000's to choose from with our mobile showroom!

- ◆ Mobile showroom to your home
- ◆ 1000's Samples to your door
- ◆ Fully qualified insured fitters
- ◆ Family run business since 1999
- ◆ Furniture moved & carpets uplifted for OAP'S & disabled free of charge





Find us on facebook

Call 7 days a week 8am-9pm
01527-894777
www.direct-floors.co.uk




Happy to help!

Council vote on gypsy site is set for Monday

by Ryan Smith
ryan.smith@bullivantmedia.com

A DECISION looms on a controversial bid for land in Hagley to be converted for use as a caravan site for five traveller pitches.

Bromsgrove District Council's planning committee will meet at 6pm on Monday to decide whether to give permission for the traveller pitches on land at Wassell Grove Lane.

The application, if accepted, would include the laying of hardstanding and a 1.8m timber fence but planning officers have recommended full planning permission be refused.

The five pitches on the application site are currently occupied by touring caravans.

Permission is now being

sought for both mobile homes and touring caravans, as well as small utility rooms on each pitch.

Car parking and amenity spaces are also proposed, to serve each pitch.

Councillor Ruth Lambert has requested the application be considered by the planning committee rather than being determined under delegated power, due to the public interest and a large number of responses from residents.

In total, 83 comments have been received by the council, with all of them objecting to the proposal.

Worries expressed include the narrowness of the road; potential additional traffic; the impact on pedestrians, including children, using the road; a lack of footpaths or street lighting; and claims the site access is dangerous.

Those against the development also feel the green belt site should be protected and say the large area of hardstanding that has been proposed is unnecessary. They also highlight a lack of local amenities near the site.

The council's conservation officer says the development would detract from the setting of the nearby, grade II-listed Wassell Grove farmhouse.

Need

A Bromsgrove district gypsy and traveller and travelling showperson accommodation assessment showed that between 2024/25 and 2041/42, there will be a need for 37 additional gypsy and traveller pitches across the district.

Of that number, 17 pitches will be needed by 2030 and the proposed development, if

approved, would contribute five of them.

Planning documents add, it is evident there is an identified need for additional pitches in the following five-year period and state the council cannot demonstrate a five-year supply of deliverable sites.

Documents also consider the site to be 'grey belt' - land in the green belt which has been previously developed or a plot that does not strongly contribute to any purpose.

The planning applicants say the site is suitable because of its proximity to services and facilities and should be accepted, in part, due to the lack of suitable alternative sites for the proposed occupants and a lack of any real, long-lasting landscape harm.

Visit youtube.com/live/LqW-9Fwd5tc to watch the meeting.

The demise of coaching firm stirs memories

STANDARD readers have been sharing their memories of Harris Coaches, following the company's closure last week, after 104 years in the town.

We featured the family firm on our front page and the story has become our best-read piece of the year, on our website.

There were hundreds of reactions on our Bromsgrove Standard Facebook page, along with almost 100 comments, including messages of thanks, goodwill and luck for the future.

Catherine Seddon, who emailed in, recalled being picked up by the Silver Queen coaches to take her to Riggby Hall and back.

"I will never forget how how lovely the coaches were to go to school, and also how lovely and pleasant the drivers were every morning and every afternoon," she said.

"The owners, Stephen and John, were also pleasant."

Martyn Rollason, on Facebook, also reminisced about going to school on the "ancient Silver Queen coach".

Sharon Dauncey said:

"I have fond memories of Harris Coaches as a youngster - I travelled to France, Italy and Austria, plus a few UK trips when my dad was a driver there."

Sheryl Cartlidge said: "So sad to hear this. I did my work experience there in 1995 and also worked as hostess on a few France and Isle of Wight trips, with Mark Harper driving the coach."

"I also went on some trips as a teen to Blackpool ... fantastic memories."

Tony Young said: "I remember many great days out with Graham ('Whack') Harris driving us to places like Blackpool, Rhyl and to other coastal days out."

"One of my colleagues, Dereck ('Sonny') Hill, left Bryant's to maintain Graham's vehicles."

"Graham was a legend in the coaching fraternity."

"Not only with his holiday trips but he was very involved in transporting children with special needs round Bromsgrove."

Visit this story at: bromsgrovestandard.co.uk for more memories of Harris Coaches.

Roger rattles off 75k before big birthday



Roger, in blue, with family and friends at the Boat and Railway pub, after completing 75km before his 75th birthday. s

THE BROMSGROVE man who set himself a challenge of running 75km in the week leading up to his 75th birthday, to raise funds for the Midlands Air Ambulance, completed his quest.

Roger Ottley notched up 10km on day one, followed by 11.11km on day two and 9km on each of days three and four. He then ran 11.79km on day five, 12.1km on day six and 13.5km on the final day.

Roger had the support of more than 20 of his fellow runners, who each accompanied him for one or more of his daily routes.

He completed his seven-day challenge at the Boat and Railway pub, in Bromsgrove, where his friends and family greeted him at the finishing line.

Roger's grandchildren, daughter and son-in-law ran the last 4km with him, for a really special finish.

Celebrations then followed with drinks, cake and presents in evidence.

Roger, who is a member of two running clubs - Avoncroft Hurriers and Run Sanders - set himself a fundraising target of £500.

At the time of going to press, Roger's total was up to £925.

His supporters are hoping he will get to the £1,000 mark.

Roger has also been invited to the Midlands Air Ambulance HQ, where he will be able to meet crew members and have a photograph with them and the helicopter.


One of Roger's friends, Kirsty Underhill, said: "We are all in awe of him and what he has achieved, especially at 75."

Anyone wanting to boost Roger's coffers further can visit justgiving.com/page/roger-ottley-1, to donate.




Having a change round? Then give us a ring before you fling

We collect re-usable good quality furniture to either be given FREE to households who are in need or to be sold at our showrooms at
1 Sherwood Road, Bromsgrove B60 3DR
01527 882410
www.newstarts.org.uk



Solihull Village

Whether you're after an action packed later life or looking to wind down and relax, Solihull Village could be the place for you



To discover more about village life and our beautiful retirement apartments, call 0121 227 3670

War-artist discussion

THE LATEST talk in Redditch History Society's annual programme will take place on Monday and will focus on artists during the Second World War.

Art historian Henrietta Lockhart – curator of museum collections at Winterbourne House and Garden – will interpret many works of art and talk about how war artists built upon historical artistic precedents to put across a variety of messages through their work.

The subject of the presentation is the body of work produced during the Second World War, between 1939 and 1945 – both by official war artists and artists surrounded by, and clearly shaped by their lived wartime experience.

The Redditch History Society meets from 2pm to 4pm on the second Monday of every month at the Oasis Christian Centre, on Plymouth Road.

Non-members are always welcome, for a £4 admission fee, and refreshments will be available after the talk for just 50p per person.

Further details of the 2026 season can be found at redditchhistorysociety.org.uk or on the leaflet available from Redditch Library and The Palace Theatre.

Henry Smith has organised the HB9 Fundraising T10 Tournament, on May 24. s



by Tristan Harris
tristan.harris@bullivantmedia.com

A FRIEND of Harry Bennett is organising a charity cricket tournament to raise funds in his memory.

The event – staged by Henry Smith – aims to bring together family, friends, former teachers and local cricketers for an afternoon of sport, food, music and community support.

The HB9 Fundraising T10 Cricket Tournament will take place at Avoncroft Cricket Club on Sunday, May 24, with gates opening at 1pm and the cricket starting at 1.30pm.

Harry Bennett died from sepsis in 2020, aged just 16. He was a much-loved local sportsman and The Harry Bennett Foundation (HB9) was cre-

ated in his memory, to help more people access the life-changing benefits of sport.

The tournament will feature four teams: Family and Friends; Harry's Mates; Teachers from Aston Fields Middle School and South Bromsgrove High School, where Harry was a pupil; and a Cricket Invitational Team.

The sides will compete in a fast-paced T10 format, with two opening matches followed by a final.

T10 cricket is a short, exciting version of the game with each team batting for a maximum of 10 overs, making it ideal for a family-friendly community event.

Visitors will also be able to enjoy food from Manny's Eats and an ice cream van, HB9 merchandise and a disco after the cricket, which is expected to finish in early evening.

Organiser Henry said: "Harry loved sport and he brought people together, so this tournament feels like a really fitting way to raise money in his memory. We wanted to create a fun day for families, friends and the local community while supporting the amazing work HB9 continues to do for young people and others who need help accessing sport."

Funds raised will go towards HB9's work providing financial help for sporting equipment and training, helping kick-start new clubs and teams, offering one-off payments and ongoing scholarship-style funding and covering the cost of sporting experiences for people who may otherwise be unable to access them.

The charity has recently helped a number of young local athletes including 12-year-old Scarlet Lloyd,

whom HB9 helped achieve her dream of travelling to Sweden this summer for the Gothia Cup, the world's largest international youth football tournament.

HB9 has also supported young athletes from the Kazoku-Kan Judo Club, in Bromsgrove, so they could compete at the Ben van der Eng Memorial 2026, in Holland, and it has part-funded 11-year-old Billy from Redditch, so he could take part in the Barcelona Experience Grassroots Cup 2026, in Spain.

Visit hb9.co.uk for more information on the Harry Bennett Foundation.

Entry to the event will cost £5 on the day or £3 ahead. To pre-book entry at £3 per person, visit justgiving.com/charity/hb9 and reference your name and 'Cricket'.

windsor
CARPETS
1985 - 2025

40 YEARS
of excellence!



For all your
FLOORING
NEEDS

Unit 4, Brockhill Works, Windsor Road, Redditch, B97 6DJ

Tel: 01527 61906 Email: info@windsorcarpets.com

Web: www.windsorcarpets.com

Cannabis grower faces deportation

Man breached order to enter UK

by Ryan Smith
ryan.smith@bullivantmedia.com

A MAN who breached a deportation order and cultivated cannabis has been jailed and faces being thrown out of the UK.

Festim Ahmetaj, of Victoria Square, Droitwich, was sentenced to 34 months for the offences, after being convicted at Worcester Crown Court.

As well as the cannabis growing offence, the 35-year-old was also found to have knowingly entered the UK in breach of a deportation order.

Ahmetaj was sentenced to 24 months in prison, the cannabis plants and growing equipment were ordered to be destroyed and he was ordered to forfeit £300 cash and to pay a victim surcharge of £228 for the first offence. He was given 10 months, to run consecutively, for the second offence.

Notice was also given to the Border and Immigration Agency that Ahmetaj may be liable for deportation.

Ahmetaj's arrest, charges and sentencing followed a drugs warrant carried out by West Mercia Police's task force and the Droitwich safer neighbourhood team, on April 1.

Safer neighbourhood inspector for Droitwich, Lisa Hornberger, said everyone was pleased with the swift custodial sentence for Ahmetaj, following last month's warrant.

"Cannabis grows like this are often linked to organised criminal gangs and this is another one shut down and the 'farmer' behind bars," said Insp Hornberger.

"Ahmetaj also breached a deportation order so he ultimately faces being thrown out of the UK, pending a decision by the Border and Immigration Agency."



Jailed: Festim Ahmetaj. s

Bonnie and Clyde in town

A 'HIGH octane' production of *Bonnie and Clyde: The Musical* is coming to Droitwich's Norbury Theatre.

Performances of the production, which tells the true story of America's most infamous outlaw couple, take place at 7.30pm each evening from June 17 to 20 and between June 25 and 27.

There will be a Saturday matinee at 2.30pm.

The musical, staged by the Norbury Players, charts the rise of Bonnie Parker and Clyde Barrow during the Great Depression.

Driven by dreams of fame and

a better life, the pair embark on a crime spree which captures the imagination of the nation while leaving a trail of danger, drama and heartbreak in their wake.

With a powerful score and gripping story, *Bonnie and Clyde* combines romance, ambition and tragedy.

The show, delivered by a talented cast and a dynamic production team, will be packed with energy, drama and unforgettable music.

Tickets, costing £17 (£15 for concessions), are available at norburytheatre.co.uk or by calling the box office on 01905 770154.

Climate group raises publicity

REPRESENTATIVES of Bromsgrove Climate Action (BCA) had a stall on a recent High Street market to raise awareness of environmental issues.

The group, which writes *The Standard's* monthly Eco Action column, launched its Pledge No Pesticides campaign and distribut-

ed fliers for its *People's Emergency Briefing* film.

Judith Tipper, from the BCA, said: "There was lots of interest."

Turn to page 12 for more on the *People's Emergency Briefing* film being screened in Parkside Hall, in Market Street, Bromsgrove, at 6.30pm on Tuesday, June 9.



Members of Bromsgrove Climate Action had a stall on the town's weekly market, to launch its Pledge No Pesticides Campaign. s

OFTEN IMITATED BUT NEVER EQUALLED

While all costs are going up - OURS ARE STAYING DOWN

Due to our customer friendly services of No Door Salesmen, No Showroom and little overheads



NEW FLUSH WINDOWS

BEAUTIFUL COMPOSITE DOORS
Fully fitted
Competitive Prices

UPTO 30% OFF ALL WINDOWS



ALL PRODUCTS HAVE A 10 YEAR INSURANCE BACKED WARRANTY

BILL MOORE'S WINDOWS AND DOORS
A NAME YOU CAN TRUST

1 Brookside Close, Stratford-upon-Avon, Warwickshire CV37 9PL

01789 415171 • 07729 689239 • www.billmooreswindowsanddoors.co.uk

A fine harvest at Orchardfest

DETAILS of this year's Orchardfest have been released and the festival is set to be bigger and better than ever.

The event - on August 21 and 22 - will take place at Pools Farm, Moorgate Road, and will again be raising funds for the Primrose Hospice and Family Support Centre.

Two nights camping and a full festival ticket is £52 and the event is perfect for camping lovers and music festival fans, is family and dog friendly and boasts local food traders on site and a fully licensed bar serving alcoholic and non-alcoholic drinks throughout the day.

People are welcome to take their own food and drink so they can relax and enjoy a laid-back festival weekend with friends and family whilst raising funds for the charity.

Gabrielle Grubb, Primrose Hospice's fundraising manager, said: "We're so pleased to see the return of Orchardfest in 2026."

"It's a local, affordable festival that really does have something for everyone - whether you're there for the rock 'n' roll or disco, our fabulous local live bands will keep you entertained all day.

"Bring the whole family, stay for the weekend with camping and enjoy everything this fantastic event has to offer.

"You'll also be helping us raise vital funds for Primrose Hospice."

In 2024, Orchardfest raised an incredible \$36,325, and the organisers and charity are



hoping to raise even more in 2026. "We can't wait to see you there."

Orchardfest was first launched in 2016 by local hospice supporter Dave Morgan, in memory of his wife, Trish.

Dave will once again be supporting the Primrose Hospice in 2026, along with the bands which generously give their time to perform for free.

The Primrose Hospice said it was incredibly grateful for their continued support.

Orchardfest is proudly sponsored by Kelly Plant Hire, Redditch.

Tickets are selling fast, so people are being urged to sign up sooner rather than later.

Visit primrosehospice.org/events/orchardfest/ for more information.

Orchardfest is set to return bigger and better than ever, raising funds for the Primrose Hospice. Picture by S Birch. s



Chris Bloore MP Michelle Dowse and HoW College students celebrate the funding. s

College gets a funding boost

HEART of Worcestershire College has been awarded a \$1.17million funding boost to revitalise further education and equip young people with the skills they need for the future.

The investment, awarded through the FE College Condition Allocation (FECCA), will see a significant portion directed to the Redditch campus.

Funds will upgrade digital connectivity and accelerate the college's transition to net-zero infrastructure, ensuring students learn in modern, sustainable environments.

This funding is part of a \$307million national package to repair and modernise college buildings, addressing years of neglect and supporting the Prime Minister's ambition for two-thirds of young people to access high-quality apprenticeships or university education by age 25.

Redditch MP Chris Bloore has welcomed the funding.

He said: "This investment is about more than bricks and mortar - it's about investing in the future of Redditch.

"For too long, our further education system has been overlooked, leaving students and staff to make do with outdated facilities.

"This funding will support targeted improvements at the Redditch campus, helping to ensure young people have the tools and environment they need to thrive in a modern economy.

"I want every student in the town to walk into a college they can be proud of.

"One that reflects their potential and prepares them for the careers of tomorrow."

Michelle Dowse, Heart of Worcestershire College's principal and chief executive, added: "We are delighted to receive this funding.

"Our Redditch campus is already a place that students value and this investment allows us to build on that strong foundation.

"By strengthening our digital systems and accelerating progress on sustainability, we will continue to create an environment where every learner feels supported, motivated and well prepared for the future."

WHAT'S ON AT ARTRIX

LIVE MUSIC:

- 8TH MAY: AND FINALLY PHIL COLLINS
- 9TH MAY: OASISH
- 14TH MAY: ELTON'S SONG - BEYOND THE YELLOW BRICK ROAD
- 15TH MAY: THIS IS MERSEYBEAT
- 16TH MAY: CLASSIC ROCK REWIVAL
- 17TH MAY: CELEBRATING CELINE - A NEW DAY
- 22ND MAY: FRANKIE - THE CONCERT (FT THE FALSETTOS)
- 29TH MAY: RHINESTONE COWBOY: THE GLEN CABELL STORY
- 30TH MAY: BURN DEEP PURPLE TRIBUTE
- 5TH JUNE: THE CARPENTERS EXPERIENCE
- 6TH JUNE: EVERLY BROTHERS BY CANDLELIGHT
- 19TH JUNE: BEEGEES YOU SHOULD BE DANCING
- 26TH JUNE: I'M EVERY WHITNEY
- 4TH JULY: SOUND & VISION (TRIBUTE TO BOWIE)
- 10TH JULY: BLONDISH (THE MUSIC OF BLONDE)
- 11TH JULY: G2 DEFINITIVE GENESIS
- 23RD JULY: ULTIMATE ELVIS EXPERIENCE
- 24TH JULY: DESPERADOS EAGLES
- 6TH AUGUST: 50 YEARS OF FENDER
- 3RD SEPTEMBER: THE JEFF BECK EXPERIENCE
- 4TH SEPTEMBER: LUKE COMBS EXPERIENCE
- 6TH SEPTEMBER: A NIGHT IN KILKENNY
- 10TH SEPTEMBER: SIXTIES EXPLOSION
- 12TH SEPTEMBER: CLASS OF 55 (HISTORY OF ROCK N ROLL)
- 13TH SEPTEMBER: THE STROY OF JOHNNY CASH & JUNE CARTER

EVENT CINEMA:

- 28TH MAY: NT LIVE: LIVE PLAYBOY OF THE WESTERN WORLD
- 25TH JUNE: NT LIVE: LES LIAISONS DANGEROUS

CHRISTMAS SHOWS:

- 7TH DECEMBER: MICHAEL BUBLE TRIBUTE
- 14TH DECEMBER - MICHAEL BUBLE TRIBUTE
- 17TH DECEMBER - OLLY MURS AT CHRISTMAS (TRIBUTE) - ON SALE SOON!
- 21ST DECEMBER - DES COLEMAN & THE ALL STARS BIG BAND XMAS CELEBRATION

BOX OFFICE: BUY ONLINE, IN PERSON OR CALL 01527 361 324 // ARTRIXBROMSGROVE.CO.UK

BOX OFFICE OPENING HOURS:
 MONDAYS - 10:00-12:00 & 18:00-20:00
 TUESDAYS-THURSDAYS: 10:00-12:00
 FRIDAYS: 12:00-14:00
 SATURDAYS - 1000-1200
 (CLOSED BANK HOLIDAYS)

DID YOU KNOW

ARTRIX HAS THE BIGGEST SCREEN IN BROMSGROVE

ARTRIX IS RUN BY VOLUNTEERS FOR THE PEOPLE OF BROMSGROVE

ARTRIX HAS FREE PARKING FOR ALL PATRONS

YOU JUST NEED TO VALIDATE YOUR CAR REG.

AT THE END OF MAY WE WILL BE OPENING THE SPONSOR A SEAT SCHEME AT ARTRIX

£250 - 10 YEARS

FOR MORE INFO SPEAK TO A MEMBER OF THE ARTRIX STAFF ON THE LAUNCH EVENT (31ST MAY 5PM-7PM)

OR EMAIL MEMBERSHIP@ARTRIXBROMSGROVE.CO.UK

WEEKLY CLASSES

WEEKLY CLASSES:

MONDAY:
 ZUMBA WITH CHARLEY
 CONTACT: MARKETING@ARTRIXBROMSGROVE.CO.UK

HALFTAIL: ACTING LIKE ADULTS (EVE)
 CONTACT: HALFTAILPRODUCTIONSUK@GMAIL.COM

TUESDAY:
 LCTKD - TAI CHI
 CONTACT: MICHELLE@LCTKD.COM

INNOVATE DANCE (PM)
 CONTACT: INNOVATE.DA@OUTLOOK.COM

WEDNESDAY:
 LCTKD - TAI CHI
 CONTACT: MICHELLE@LCTKD.COM

INNOVATE DANCE
 CONTACT: INNOVATE.DA@OUTLOOK.COM

THURSDAY:
 ENCORE ARTS THEATRE SCHOOL
 CONTACT: CAROLINE@ENCOREARTS.ORG

FRIDAY:
 CREATIVE WRITING FOR ADULTS
 CONTACT: WORCSWRITING@GMAIL.COM

THE STAR PROJECT - YOUTH DRAMA
 CONTACT: INFO@THESTARPROJECT.INFO

SATURDAY:
 CREATIVE WRITING FOR CHILDREN
 CONTACT: WORCSWRITING@GMAIL.COM

ARTRIX YOUTH THEATRE - HIGH SCHOOL MUSICAL JR
 CONTACT: YOUTHTHEATRE@ARTRIXBROMSGROVE.CO.UK

PERFORMANCE HUB BABY BALLET
 CONTACT: INFO@PERFORMANCE-HUB.CO.UK

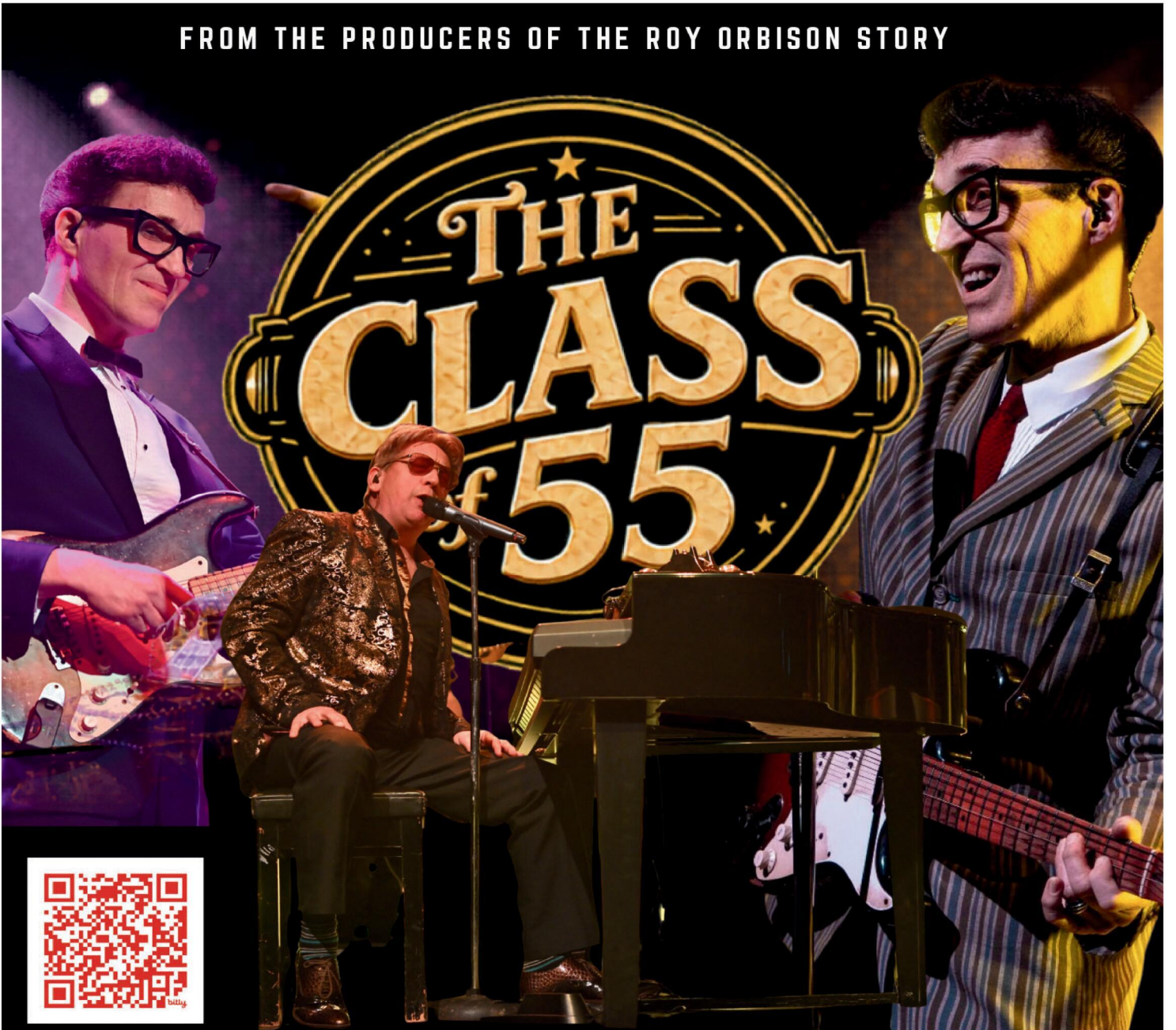
SUNDAY:
 ADULTS TAP DANCE (ONCE A MONTH)
 CONTACT: CASSIERIVETT@GMAIL.COM

NEED TO HIRE A SPACE? IF YOU RUN A CLUB, SOCIETY OR JUST NEED A PLACE TO MEET WE HAVE LOTS OF SPACE AVAILABLE!

CONTACT BOOKINGS@ARTRIXBROMSGROVE.CO.UK



FROM THE PRODUCERS OF THE ROY ORBISON STORY



REDDITCH PALACE THEATRE SATURDAY 6 JUNE

Step back in time and enjoy an electrifying live show celebrating
the biggest hits and the legends of the 1950s!

BOX OFFICE 01527 65203

★ AUTHENTIC VINTAGE VIBES ★ LIVE BAND ★ CLASSIC HITS YOU KNOW AND LOVE

FEATURING HITS BY:

ELVIS PRESLEY
BUDDY HOLLY
BILL HALEY & HIS COMETS

JERRY LEE LEWIS
CHUCK BERRY
AND MANY MORE!

SUPERVALUE FURNITURE & BED CENTRE COMFORT YOU CAN TRUST

Your Local Family-Run Retailer for Over 35 Years

Who Are We?

- OVER 35 YEARS OF LOCAL SERVICE** - Caring for Droitwich homes with comfort, quality, and a personal touch
- COMMITTED TO "COMFORT FOR EVERY CUSTOMER"** - Supportive, stylish, and affordable mobility furniture from trusted British brands.
- FAMILY-RUN, FRIENDLY ADVICE** - Guiding you to the perfect Rise & Recline Chair or Adjustable Bed for your home.
- MORE THAN FURNITURE** - helping make life at home easier, more comfortable, and more enjoyable for you and your loved ones.

HOME VISITS AVAILABLE, CALL STORE TO ARRANGE



Riser Recliner Chairs

- Enjoy comfort, support, and style with our wide range of quality recliner chairs and matching sofas.
- Choose from a huge selection of fabrics, leathers, and colours
 - Find sizes to suit your home and personal comfort
 - Take advantage of excellent Pre- and After-Sales Service
 - Enjoy discounted prices & VAT exemption available

FREE ARMCAPS



Adjustable Beds

- Experience effortless comfort and independence with our range of adjustable beds - designed for quality sleep and everyday ease.
- Simple, one-touch control
 - Available in Single, Double, and Dual models
 - Fantastic fabric and headboard options
 - Discounted prices & VAT exemption available



Why Choose Us?

- ✓ FAMILY RUN FOR OVER 35 YEARS
- ✓ FRIENDLY, PERSONAL SERVICES
- ✓ TRUSTED & RELIABLE
- ✓ FAST LOCAL DELIVERY
- ✓ TRUSTED BRITISH BRANDS
- ✓ HOME VISITS AVAILABLE

"Another Great Experience - Fantastic Service starting in the Showroom, right through to delivery and installation. Five Star Service! Fantastic Products!"
(L.H. Sept 2025)



"Fabulous Products. Lovely and Helpful Staff and Good prices - what more could you ask for!"
(CB August 2025)



"First Class Service again. Very reasonable prices for good quality furniture. Quick delivery. Very Helpful and Friendly Staff. Highly Recommend them!"
(MQ July 2025)



VISIT OUR DROITWICH SHOWROOM – OPEN 7 DAYS A WEEK

21-29 HIGH STREET, DROITWICH, WR9 8EJ

01905 796 507 Info@svfonline.co.uk



Free parking Free Local Delivery Free Installation Disposal Available

SUPERVALUE FURNITURE & BED CENTRE SAVINGS THROUGHOUT STORE

Your Local Family-Run Retailer for Over 35 Years



NEW MANGO LIVING ROOM RANGE IN STORE



HIGHGROVE
4'0" / 4'6" DIVAN SET PACKAGE DEALS FROM £399



CUSTOM SIZES AVAILABLE TO ORDER



POWER MEDIA SOFA
£1495, MANAGERS SPECIAL £995



L A Z BOY
Live Life Comfortably

LARGE RANGE OF MODELS IN STORE



LIMITED STOCK

POWER SOFA WITH CHAISE STORAGE
RRP £1499 - OUR PRICE £599 !



FROM £495

POWER SOFAS & RISER RECLINERS IN STOCK FOR IMMEDIATE DELIVERY



NEW GPLAN MODELS INSTORE



GARDEN FURNITURE NOW IN STORE



HYPNOS
THE MOST COMFORTABLE BEDS IN THE WORLD

KINGSIZE FOR THE PRICE OF A DOUBLE



FULLY ASSEMBLED BEDROOM RANGES



NEW OAK LIVING & DINING ROOM RANGE IN STORE



20% OFF LIMITED PERIOD

LUXURIOUS HANDCRAFTED BESPOKE BEDS & MATTRESSES



Silentnight

20% OFF

Silentnight mattresses, beds and headboards

MODELS IN STORE



BESPOKE UK MADE SUITES, SOFAS & CHAIRS IN STORE



RANGES OF OAK BEDROOM FURNITURE IN STORE



VISIT OUR DROITWICH SHOWROOM OPEN 7 DAYS A WEEK

📍 21-29 HIGH STREET, DROITWICH, WR9 8EJ
☎ 01905 796 507 ✉ Info@svfonline.co.uk



WHY CHOOSE US ?

-  **FREE LOCAL DELIVERY**
-  **FREE INSTALLATION**
-  **DISPOSAL AVAILABLE**

- FURNITURE DISPLAYED OVER SIX FLOORS**
- FRIENDLY STAFF WITH EXPERT KNOWLEDGE**
-  **5 ★★★★★ GOOGLE REVIEWS**

Bikers drop in for residents

RESIDENTS at a Redditch care home were treated to a special Easter Monday as a local biker group roared in for a memorable visit, to celebrate a shared love of motorcycling.

The biker group, made up of riders of all experience levels on a wide range of bike types, was formed to support one another – pairing more experienced riders with those newer to the road.

Residents embraced the occasion by dressing up.

Pauline Vernon, home manager at Bowood Court Care Home, said: "This visit meant so much to our residents.

"For those who have spent years riding, it wasn't just about seeing the bikes – it was about reconnecting with a huge part of their lives.

"The conversations, the memories and the smiles we saw throughout the day made it incredibly special for everyone involved."



The biker group was formed to support one another, pairing more experienced riders with those newer to the road. s

Climate film screening aims to inform public about the issue

by **Tristan Harris**
tristan.harris@bullivantmedia.com

A FREE public screening of *The People's Emergency Briefing* will take place at Parkside Hall, in Market Street, Bromsgrove, at 6.30pm on June 9.

The screening will be followed, at around 8.30pm by a discussion.

The event is part of a UK-wide programme designed to ensure the public and decision-makers are informed about the climate and nature crisis and what it may mean for communities nationwide.

In November, more than 1,200 MPs; peers; leaders from business,

culture, faith, sport and the media gathered at Westminster Central Hall for the National Emergency Briefing – a landmark event bringing together leading experts to assess the UK's exposure to climate and nature risks.

The briefing, introduced by Chris Packham CBE, set out the implications of climate and nature breakdown for food security, public health, infrastructure, the economy and national security, alongside evidence-based actions that could reduce the risks. That national event has been adapted into a 50-minute public film, *The People's Emergency Briefing*, which launched on April 7.

The film unites leading scientists



Eco Action



we can do nationally to address them."

The screening comes after recent flooding in Worcester and Tenbury Wells, small wild fires on the Lickey Hills, farming pressures caused by waterlogged fields, illegal air pollution and alarming water quality in Sanders Park.

Organisers emphasise the event is intended to bring together residents, community leaders and decision-makers.

MP Bradley Thomas and Redditch MP Chris Bloore, councillors and other influential people have been invited to attend the event.

A spokesperson for lead event organiser Bromsgrove Climate Action said: "This is about creating

space for people to come together, look at the evidence and begin a more informed conversation about what it means for our community and how we can support the bolder action now called for by the science. How well-prepared are we for emergencies in Bromsgrove and Redditch?"

Thousands of screenings will take place nationwide throughout the year.

Tickets for the Bromsgrove screening are free but advance registration is required.

Email pebfilm@ourclimateconversation.uk or visit Bromsgrove Climate Action on Facebook and message at B.C.Action@createvedge.uk for more details and to book places.

INTERNATIONAL METALS & CABLE RECYCLING LTD

We purchase all Ferrous and Non Ferrous Metal Batteries and Cables

Collection Service Available

Long Marston Road, Long Marston, Stratford Upon Avon, Warwickshire, CV37 8AQ

01789 721 288

info@imcr.co.uk

Open Mon/Fri - 8am - 5pm



REDDITCH BID & SHAKESPEARE RALLY PROMOTIONS PRESENTS



FREE EVENT



SATURDAY Post - 1990 Vehicles

SUNDAY Pre - 1990 Vehicles

EXPLORE CLASSIC, VINTAGE AND MODERN CARS | MOTORBIKES, TRUCKS AND STEAM ENGINES | KIDS FUN FAIR | FOOD & CRAFT STALLS | THE DINO BUS EXPERIENCE

SAT 16 & SUN 17 MAY 11:00 TO 16:00

REDDITCH TOWN CENTRE



www.redditchmotorshow.co.uk

Messing about on the... canal

by **Ryan Smith**
ryan.smith@bullivantmedia.com

VISITORS and organisers have praised this year's "exceptional" St Richard's Canal Festival.

The annual event, organised by the Worcester to Birmingham and Droitwich Canals Society, took place at Vines Park over the May Day bank holiday weekend, attracting huge crowds. Saturday morning saw the annual Blessing the Upwich Brine Pit ceremony and procession take place.

Highlights of the festival throughout the weekend included the *Pamela May 2* narrowboat operating trips from Vines Park and along the canal.

There were also model boats on display and demonstrations held on the waterway.

Live entertainment on offer included local choirs, groups and soloists on the stage in the marquee.

There was also a real ale and cider bar offering a wide selection of beers and ciders.

Adults and children were able to

enjoy a range of activities throughout the festival, including a fun dog show on bank holiday Monday.

Avid shoppers were able to enjoy looking around a selection of community stalls and the annual Great Droitwich Duck Race once again proved to be one of the highlights of the weekend.

A campaign to restore the canals was initiated by the late Max Sinclair in the late 1960s and the Droitwich Canal Trust was formed soon after.

In 2001, as part of a trust fundraising campaign, annual summer water festivals in Vines Park were arranged on the already-restored canal in Vines Park.

That event was later extended to become the St Richard's festival.

A spokesperson for the trust said: "We do hope everyone enjoyed the festival this year. The weather did stay kind to us.

"Thank you to all our visitors for coming along.

"It's always a special annual event.

"We might even be persuaded to do it all again in 2027!"



The *Pamela May 2* sets sail. s



Volunteers gather for the festival. s

The Orchards School and Nursery

Nursery and Reception Places Available



We have Nursery and Reception places available now and for September.

From September, Little Gems, our Wrap Around Provider, is delighted to extend their before and after care to Nursery from 8am until 6pm.

Please do get in touch and come along for a tour.



Contact us:

01527 872271

office@theorchardsschool.org

just go.holidays
For more information, or to book, please call **03332 342 514** Quote **osg**

★★★★★ ★ Trustpilot
Reader Travel



Scarborough, York, Whitby & the North Yorkshire Moors
Departing Mon 22 Jun '26
 Discover Yorkshire's stunning coast and moorland on this five-day escape based in Scarborough. Highlights include historic Whitby with its dramatic cliffs and abbey, the scenic village of Goathland and the sweeping landscapes of the North York Moors.

SO MUCH INCLUDED...

- Return coach travel **from Redditch**
- 4 nights at the Royal Hotel, Scarborough (JG2 rating) with dinner & breakfast
- Entertainment some evenings
- Excursions to Whitby, North Yorkshire Moors (Goathland & Pickering) & York

Optional excursion to Beverley & Filey (£12pp)
▶ SAVE £30 - Quote OSG
- Book by 22 May 2026

5 Days by Coach only £459
 Single Supplement £100

These packages are subject to Just Go Holidays terms & conditions. Coach bookings are protected by Bonded Coach Holidays & the Association of Bonded Travel Organisers Trust Ltd. Air holidays are ATOL protected No.10689. Prices are per person, based on two people sharing a room & honoured on bookings made up to 7 days post publication, after which prices may fluctuate. Choices of date, hotel, airport or pick up location may incur a supplement. Please see website or call for full details.



Isle of Wight Weekend
Departing Fri 17 Jul '26
 A long weekend by the sea beckons on this lovely escape to the Isle of Wight. Beloved since Queen Victoria's reign, follow in the footsteps of royalty and relax at our base in a popular seaside resort and discover other highlights during an optional trip!

SO MUCH INCLUDED...

- Return coach travel & ferry crossings **from Redditch, Bromsgrove**
- 3 nights at the Medehamstede Hotel, Shanklin (JG2+ rating) with dinner & breakfast
- Entertainment some evenings
- Excursion to Newport

Optional Island Highlights tour (£15pp)

4 Days by Coach only £309
 Single Supplement £60

Visit us online at [justgo.holidays.com/OSG](https://www.justgo.holidays.com/OSG) 

033 numbers are free within inclusive minutes packages otherwise standard rates apply.










**TRANSFORM YOUR EXISTING
CONSERVATORY INTO A LIVING SPACE
YOU CAN USE ALL YEAR ROUND**



**CONSERVATORY
ROOF REPLACEMENT**

Every Ensign conservatory roof is bespoke. Accurately surveyed & precision built in our own factory.

- Large range of lightweight tile colours
- U-value up to 0.12, this is better than current building regulations
- Keylite roof windows
- Electrics & plaster finish

**CONSERVATORY AND
ORANGERY EXTENSIONS**

- Cost effective extensions
- Large range of designs
- LABC approval undertaken
- Average build time 4 weeks

**REPLACEMENT WINDOWS
AND DOORS**

- Aluminium bi-fold doors
- Composite doors
- Linar window and door systems
- Planitherm Technology sealed units for maximum efficiency
- High security PAS 24 locking systems



CALL TODAY TO BOOK YOUR FREE
NO OBLIGATION SITE SURVEY

01527 69296

www.ensignroof.co.uk

Scan to read our reviews



**Trade enquiries welcome
Supply only options
Installers always required**



THE FOX INN

CHADDESLEY CORBETT



IT'S BACK!

2 COURSE CARVERY £10

£11 if paying by card (£1 Discount when paying cash)

Choose any STARTER or DESSERT

Available Mon- Sat 12pm-2pm and 5pm-8pm • INCLUDES BANK HOLIDAY MONDAY!

New Spring Menu

3 COURSE MAIN MENU £15.95

Available Mon-Sat 12pm-8pm

£1 Discount if paying by cash

We like simply rather give it back to our customers rather than the banks.

Don't forget our famous sunday carvery from **£12.95!**

£12.95 AND **£16.95**
CHILD AND **ADULT**

The Fox Inn, Lower Chaddesley, Kidderminster, DY10 4QN

01562 777247 | thefoxinnchaddesley.co.uk

Town ready to welcome Motor Show

REDDITCH is gearing up for the return of one of its most popular events - the Motor Show - which rolls back into town next weekend.

Taking place on Saturday and Sunday, May 16 and 17, the event will once again transform the town centre into a vibrant showcase of automotive excellence, attracting enthusiasts and families from across the region.

Organised by Redditch BID, in partnership with Shakespeare Rally Promotions, the 2026 event is set to be the biggest yet, with an expanded two-day format.

Visitors can enjoy a wide range of vehicles - from modern performance cars to timeless classics - with each day offering something different.

Saturday will feature vehicles from 1990 onwards, including modern, modified and high performance cars and pre-1990 vehicles - from vintage classics to early 20th century motoring icons - will be there on Sunday.

A major highlight this year will be the Dino Bus experience, bringing dinosaurs to life through interactive exhibits, educational activities and fantastic photo opportunities for families.

Adding even more excitement, visitors will also be able to see the iconic

Back to the Future DeLorean, which will be on display inside the Kingfisher Shopping Centre.

Muj Rahman, Redditch BID manager, said: "We are thrilled to bring the Redditch Motor Show back for 2026 and this year it's bigger and better than ever with a full two-day programme."

"The event continues to grow each year and, by splitting it across two themed days, we're able to showcase an even wider range of vehicles and attractions."

"From classic cars and modern vehicles to family entertainment like the Dino Bus and the DeLorean display inside the Kingfisher Centre, there really is something for everyone."

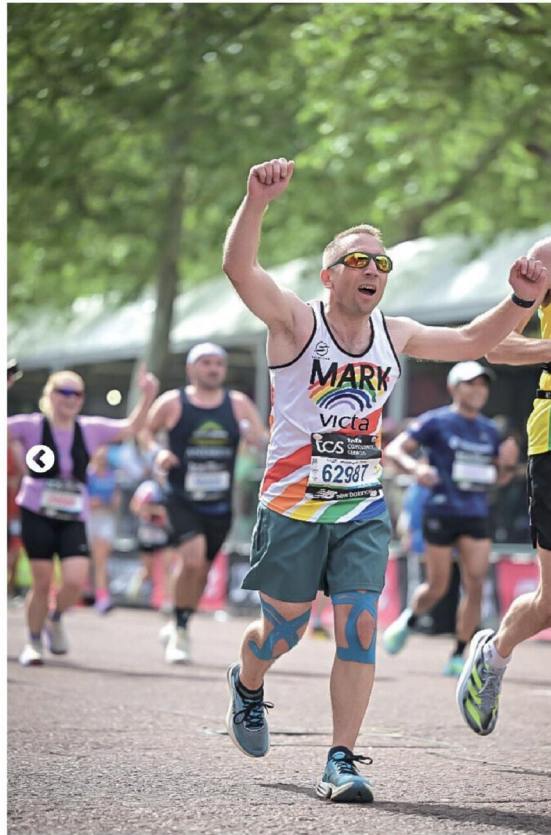
"We're proud to deliver a free event that brings the community together and supports our town centre businesses."

Liz Eden, from Shakespeare Rally Promotions, added: "This year's motor show is set to be a fantastic event as we celebrate our fifth year of running."

"Following the success of last year's show, we've expanded it into a two-day event."

The show runs from 11am until 4pm and is free to enter.

Visit redditchmotorshow.co.uk for more information.



Mark Gibson has raised £3,000 for VICTA after successfully completing the London Marathon. s

THE STORE director of Bromsgrove's Specsavers has raised £3,000 for charity after completing the London Marathon.

Mark Gibson ran the 26.2-mile race for VICTA, a charity supporting children and young adults living with sight loss.

He had initially set himself a fundraising target of £2,250 and surpassed it.

The team at Specsavers on Bromsgrove High Street hosted a series of community events, including book sales, cake sales, raffles, and a sale of knit goods.

In a final show of solidarity, colleagues also set up an in-store treadmill and walked 26.2 miles, the same distance Mark ran, to provide a final boost to the fundraising campaign and celebrate Mark's achievement.

Mark said: "Completing the London Marathon is one of my proudest achievements."

"While it was a gruelling challenge, the atmosphere on the day was incredible and I am so grateful to everyone who donated to help me smash my target."

"I also owe a huge thank you to my wonderful colleagues for their unwavering support throughout my training and right up to the finish line."

VICTA works with children and young adults up to the age of 29 who are blind or partially sighted, and their families.

Through advice, grants, activities and tailored support, the charity helps young people build confidence, gain essential skills and lead independent lives.

Visit victa.org.uk for more on the charity.



Avon ROOFING

PROFESSIONAL RELIABLE TRUSTED

avonroofing6@gmail.com • www.avon-roofing.co.uk

PROFESSIONAL • RELIABLE • TRUSTED

- ◆ New roofs
- ◆ Re-roofs
- ◆ Roof repairs
- ◆ Tiles/slates replaced
- ◆ Fascias
- ◆ Cladding
- ◆ Soffits
- ◆ Guttering
- ◆ Down pipes

15% OFF

when mentioning this advert

- ◆ Flat roof solutions
- ◆ EPDM rubber roofs
- ◆ Chimneys rebuilt
- ◆ Re-pointing
- ◆ Re-bedding
- ◆ DRY VERGES
- ◆ DRY RIDGES
- ◆ EAVES PROTECTION SYSTEMS (EPS)

Commercial roof projects undertaken

Free Quotations - All Work Guaranteed

Call Jake on 07389 844 856 or 01789 507 131 for a free quotation

Find us on Google

So much more than self storage

Wellesbourne, Shipston-on-Stour, Mickleton & Long Marston



We can help you move house, build an extension or start a new hobby

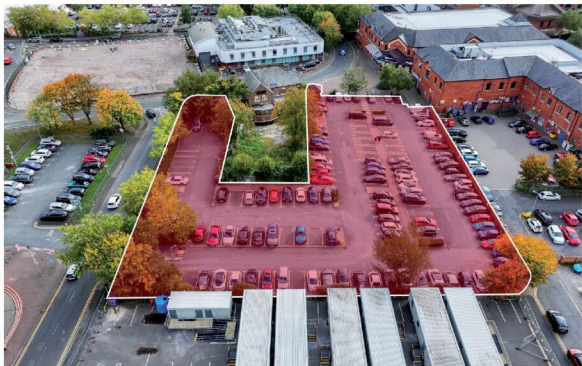
Call Lindsey 0800 772 0200
hello@beyondstorage.co.uk
 Wimpstone Fields, Wimpstone
 Stratford-upon-Avon CV37 8NN



Beyond Storage



ssa
self storage
association
United Kingdom



Quadrant car park is set to go under the hammer.

Car park up for sale

THE CAR park at The Quadrant in Redditch is set to go under the auctioneer's hammer.

The Alcester Street car park is on the market for offers based on £2,450,000 on a freehold basis and is currently let to Bank Parking Ltd until March 2020, and Swarco Smart Charging Ltd until February 2039.

The projected rental income for 2026 is £266,598, which equates to an initial yield of eight per cent, after service charges and purchaser costs.

James Mattin, managing director of Bond Wolfe, said: "Following recent property investment sales in the area, we are delighted to be offering this car park investment opportunity for sale.

"This is a fantastic, strong income

producing asset with underlying future development potential in Redditch town centre.

"With consistently increasing car park revenue, this is an excellent portfolio addition or standalone passive income asset."

The 0.9acre site has 140 car parking spaces and is close to all amenities including the Kingfisher Shopping Centre, the Palace Theatre and the town's other shopping hub at the Trafford Retail Park.

Mr Mattin said there were a number of asset management opportunities, including increased parking fees or potentially securing alternative use planning consent for future residential development.

For more visit Bond Wolfe's website or call James on 0121 525 0600.

Sheila's dream is one for the books

A FORMER librarian was granted one of her final wishes after she was given a guided tour of Bromsgrove Library to reconnect with her past career and lifelong love of books.

When the team at Bromsgrove's Chandler Court learned former librarian Sheila Oliver, 91, was keen to revisit a library, they were determined to make her wish come true.

Sheila left school at 16 and began her career at Birmingham Central Library, before leaving to raise her first child.

Although she no longer worked in libraries, her passion for reading never faded.

The team at Chandler Court arranged a guided tour of Bromsgrove Library for Sheila, giving her the chance to see how libraries had evolved over the years.

She also browsed historical books, used the traditional date stamper and learned how library systems have become fully computerised and barcoded.

A highlight for Sheila was joining a baby sing-along and play group.

Sheila said: "I enjoyed my day talking to the staff, looking around the library, seeing how different it is today and learning about the services now on offer.

"I loved the baby group activity as, back in my day, no children were allowed in the library and everywhere was very quiet."

Joleen Rayner, Chandler Court



Sheila Oliver, 91, had her dream come true at Bromsgrove Library. s

home manager, said: "Sheila regularly talks about her time working at Birmingham Library.

"She recalls how her then-boyfriend John, now husband, would pick her up after work at 8.15pm when the library closed for the night.

"Sheila had so much fun walking around Bromsgrove Library.

"She was delighted to see how libraries have become thriving, chaty community hubs.

"A big thank you to the team and everyone at Bromsgrove Library for arranging the visit."



Reddistores Self Storage Redditch

We have a wide range of units in our heated facility ranging from 25sq ft -380sq ft, with the majority on the ground floor.

The facility is accessed via key code entry with 24 hour CCTV, plus all indoor units have their own alarm linked to ADT. The facility and grounds are well maintained and lit, and offer a safe environment for customers 7 days a week.

We also offer a man and van service free of charge for two hours, to help bring your items into storage. Our prices are competitive but we will price match any other facility quote within 5 miles should you find it cheaper, plus we offer discounts for long term customers.

UNITS AVAILABLE WITH NO CONTACT



SELF STORAGE SOLUTIONS FOR HOME & BUSINESS

For further Information Call

01527 62308

Weights Farm Business Park, Weights Lane, Redditch B97 6RG

www.reddistores.co.uk



A Seasonal Guide to Revitalising Your Space

SPRING is a time of renewal and rejuvenation, making it the perfect season to tackle various tasks around the home and garden.

As warmer temperatures set in and nature reawakens, homeowners can take advantage of this opportunity to enhance their living environments. In this guide, we'll explore a multitude of jobs that can be undertaken to ensure your home and garden are ready for the warmer months, focusing on maintenance, organisation, and cultivation.

Spring Cleaning: Refreshing Your Home

One of the first and most important tasks in the spring season is to conduct a thorough spring cleaning. This involves more than just your regular cleaning routine; it's about

deep cleaning every nook and cranny of your home.

- **Decluttering:** Begin by sorting through your belongings. Gather items that you no longer need or use and consider donating them or organising a garage sale. This will not only declutter your space but also make your home more inviting.
- **Dust and Clean:** Focus on areas that are often overlooked during routine cleaning, such as ceiling fans, light fixtures, baseboards, and behind appliances. Dust accumulated over the winter can trigger allergies, so a good spring clean can greatly improve your home environment.
- **Windows and Curtains:** Take the time to clean windows inside and out, allowing natural light to stream in. Wash or replace curtains and blinds, as this can instantly refresh a room.





ROWBERRYS

The Growing Nursery, Farm Shop, Butchery, Deli and Restaurant

Get Your Garden Summer Ready

OPEN 7 DAYS A WEEK

Mon-Wed: 8.30 am-5.00pm

Thurs-Sat: 8.30am-5.30pm

Sunday: 8.30am-4.30pm

PREMIUM HOME-GROWN HANGING BASKETS



From Only **£9.99**

Massive choice of Fuchsias, Basket Plants, Geraniums & Begonias

£1.95 EACH OR 10 PLANTS FOR £18

Regal Pelargoniums

Only £5.99 each or 2 for £10



DON'T FORGET TO VISIT OUR FARM SHOP, DELI & FARM BUTCHERY

Wide selection of local British produce

Sweet treats, cake, pastries and pies galore

BBQ items available on our Butchery Counter

Home cooked meals and afternoon tea's available in our Restaurant



SUMMER TRAY BEDDING

12 Plants For **£5.25** or 5 Trays For **£25** (60 plants)



Grow your own herbs, veggies and fruit plants

Huge selection available now



Lower Chaddesley Corbett, Kidderminster DY10 4QN

Tel: **01562 777 003**

Spring Home and Garden

Garden Preparation: Embracing Nature's Growth

As the days become longer and warmer, the garden requires attention to prepare for a flourishing summer. Spring is a pivotal time for planting and nurturing your outdoor space.

- **Soil Preparation:** Start by inspecting your garden beds. Clear away any debris, weeds, or dead plants from the winter months. Consider testing your soil's pH and nutrient levels, as this will help you determine what amendments may be necessary to promote healthy

plant growth.

- **Planting:** Spring is ideal for planting a variety of flowers, vegetables, and herbs. Depending on your local climate, consider sowing seeds for vegetables such as peas, lettuce, and spinach. In terms of flowers, hardy annuals and perennials can be planted to bring a burst of colour to your garden.
- **Mulching:** Once your plants are in place, apply a layer of mulch to help retain soil moisture and suppress weeds. This will also give your garden beds a tidy appearance.



Lawn Care: Reviving Your Green Space

The lawn often requires extra care in the spring to ensure it remains lush and green throughout the growing season.

- **Mowing and Edging:** As the grass begins to grow, a regular mowing schedule will help keep it at an appropriate height. Additionally, edging the lawn can create a polished look and define borders

between lawn and garden beds.

- **Overseeding:** Consider overseeding your lawn with a good quality grass seed to fill in thin or bare patches. This promotes a thicker, healthier lawn that is more resistant to pests and disease.
- **Fertilising:** Spring is the perfect time to fertilise your lawn, as it will stimulate growth. Choose a slow-release fertiliser suitable for your specific type of grass.

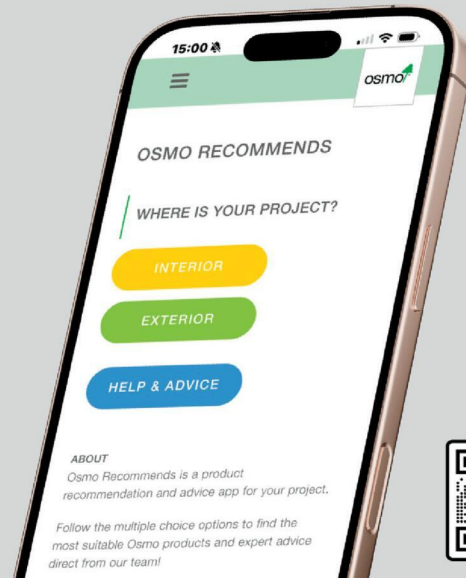
LOOKING FOR PROFESSIONAL WOODCARE ADVICE?



The Osmo Recommends App is a quick and easy tool designed to help you identify the ideal Osmo product for any project.

By answering a few simple questions about the wood type, location, desired finish, and level of protection required, the app instantly provides tailored product recommendations along with the correct application guidance.

Whether you're working on interior or exterior projects, the app streamlines decision-making and ensures you get the best results with the right Osmo solution.



www.osmouk.com



Spring Home and Garden



Home Maintenance: Proactive Upkeep

Spring is an ideal time to inspect and maintain your home's systems and structures, ensuring everything operates smoothly.

- **Roof Inspection:** After harsh winter weather, check your roof for any damage, such as missing tiles or leaks. Be proactive; fix any issues now to avoid more extensive repairs later.
- **Gutter Cleaning:** Clear any debris from gutters and downspouts to prevent blockages. This is essential to ensure proper drainage and prevent water damage to your home.
- **Heating and Cooling Systems:** Have your heating system serviced to prepare for the transition into the warmer months. If you have air conditioning, ensure it is cleaned and serviced to be ready for the summer heat.

Outdoor Spaces: Enhancing Your Experience

Spring is not only about upkeep; it's also an opportunity to improve and enhance your outdoor living areas.

- **Patio and Deck Maintenance:** Inspect your patio and deck for any signs of wear and tear. Clean the surfaces and check for loose boards or railings. A fresh coat of paint or sealant can improve longevity and aesthetics.
- **Garden Furniture:** Wash outdoor



furniture and inspect for any damage. Consider reupholstering or simply rearranging your furniture to maximise space and enjoy your garden more thoroughly.

- **Creating Zones:** If your garden space

allows, consider creating different zones for various activities—like a relaxation area, a vegetable patch, and a play area for children. This creates a multifunctional space that can cater to all family needs.

DRIVES4U

Tel: 0800 3032559 Mob: 07773 911552

www.drives4u.co.uk

Are you looking to improve or enlarge your driveway or patio?

We can provide you with a beautiful new patio or driveway in Coventry, Bromsgrove, Redditch, Solihull or Birmingham

5 Year guarantee

- We've designed and built just about every shape and size of driveway and patio you can imagine, so we will not be phased by your project.
- We strive to achieve 100% satisfaction and unlike other driveway companies, with us you pay absolutely nothing upfront.
- Give us a call and you could save upto £1000






Tel: 0800 3032559 | Mob: 07773 911552
www.drives4u.co.uk



LOCAL PLUMBING YOU CAN RELY ON!

PROUD TO SERVE OUR LOCAL COMMUNITY

-  **EMERGENCY PLUMBING**
-  **PLUMBING & HEATING**
-  **CCTV & DRAIN JETTING**
-  **REPAIRS & MAINTENANCE**
-  **HOME CARE PLANS**



 **WE'RE JUST A CALL AWAY!**

 **MOBILE**
07415 066 381

 **LANDLINE**
01527 332 488

 **RELIABLE SERVICE**

 **FRIENDLY EXPERTS**

 **LOCAL PLUMBERS**

 Info@PlumbFixSolutions.co.uk |
  www.PlumbFixSolutions.co.uk

SUDOKU

Complete the grid so that every row, every column and every 3 x 3 box contains every digit from 1 to 9.

EASY

6	4			3				8
			5		6	1		
	3				2			4
3				5	7			1
	8	9	6	1		4	5	
			2					6
4			7				9	8
	6	8	3		5			1
	7			8		6	3	5

HARD

				6	8		7	
			2		8			
				5			6	
	2	7		9	4	6		
4								8
		9	8	1		7	2	
	9			4				
			1		5			
3	2	7						

PATHFINDER

Beginning with the top highlighted letter, follow a continuous path of words associated with the given subject. The trail goes through each letter once, twisting up, down and sideways, but never diagonally.

Landmarks

E L T R C G L L A S S C A T H
 I E O A P U E A B I L G A S E
 F F W E R I L C T U E R A L D
 P F O E L S O R S M S A D A R
 I S R A N I P O L O S F I T T
 S A E W O N N C O I M A L E L
 A E C O T G I A T L I I M E
 C R U E E V O U N P A E A M R
 H L R T R I F A H O M P I T E
 A A S N E K E P C E I S D N V
 M B I P B R N E L N S N P O E
 A R K O I A N A M I T O N C C
 R O C F G L T T E P A H E H I
 P E H S A P A A R U R T N A O
 S T S I N S R G G B N E D R B

Solutions opposite

CROSSWORD

	1	2		3		4		5		6			8
7													
9								10					
11						12							
13		14					15	16					
18				19				20		21			
22						23							
	24												

ACROSS

- Stage make-up (11)
- Set apart (7)
- Hurl (5)
- Doomed (5)
- Refuse (7)
- Mourn (6)
- Dormant (6)
- Public transport (7)
- A fish (5)
- Additional (5)
- Unyielding (7)
- Shakespeare play (2,3,4,2)

DOWN

- Perch (5)
- Desert (7)
- Vigour (6)
- Change (5)
- Relate (7)
- Paris landmark (6,5)
- Yam (5,6)
- Summary of business (7)
- A reverse (7)
- Attack (6)
- A spree (5)
- Giraffe-like animal (5)

Scribble pad

LADDER

Using the clues provided, fill in each step of the ladder with a new word, changing one letter at a time.

- Generous
- Skin
- Monetary unit
- Attack
- Settled a bill



NINER

Each number from 1 to 9 represents a different letter. Solve the clues and insert the letters in the appropriate squares to discover a word which uses all nine letters.

- 549 gives a fish;
- 7126 gives a second fish;
- 883 gives a third fish.

1	2	3	4	5	6	7	8	9
---	---	---	---	---	---	---	---	---

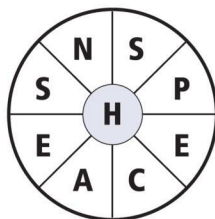
CODEWORD

This puzzle has no clues. Instead, every number printed in the grid represents a letter, with the same number always representing the same letter. For example, if 8 turns out to be a V, you can write in V wherever a square contains 8. Using your knowledge of words, complete the puzzle.

		11		18			18		14	6	13	22	13
A	10	24	13	6	3	7	22		13			9	
B													
C		20			22			14		26	22	18	22
D													
E	9	25	3	12	22	13	15	4	18				18
F													
G		13				25			22		2		10
H	14	7	6	1	14	1	22		1	13	4	11	22
I													
J													
K													
L													
M	11	14	11	1	6		22	21	22	11	1	25	13
N													
O	16		16		26			4				3	
P													
Q	14				20	6	13	1	16	26	14	13	23
R													
S	13	14	17	25	13		6		25		4		
T		19			4		10	1	24	18	6	10	1
U													
V	1	22	5	22	22		23			18		16	
W													
X													
Y													
Z													

WORDWHEEL

You have 10 mins to find as many words as possible using the letters in the wheel. Each must use the hub letter and at least 3 others. Letters may be used only once. You cannot use plurals, foreign words or proper nouns. There is at least one 9-letter word to be found.

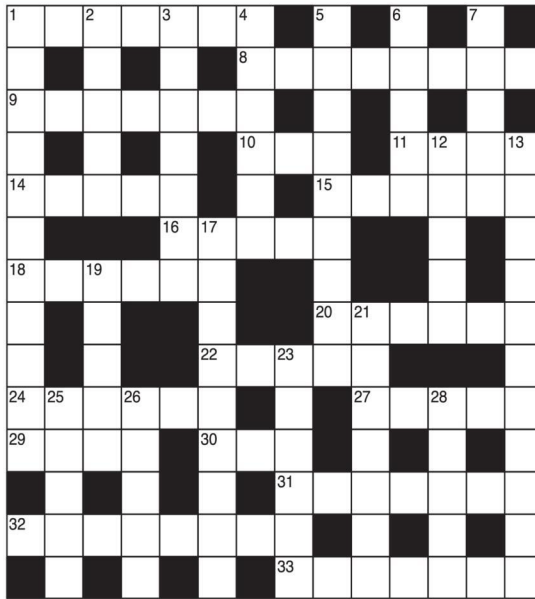


How you rate
 15 words: average 25 words: very good
 20 words: good 30 or more: excellent.

GENERAL KNOWLEDGE CROSSWORD

ACROSS

- The capital of Ontario, Canada (7)
- See 27 Across
- Racecourse where the Grand National is run (7)
- 26 Down. Bartolomé de ----, Spanish-born, Dominican historian and missionary called the "apostle of the Indians" (3,5)
- A member of the language of a Siouan people of Montana (4)
- Newspapers generally (5)
- Colourless, odourless gas, a hydrocarbon of the alkane series (6)
- Clare ---- became the UK's Secretary of State for International development in 1997 (5)
- Caterpillars, for example (6)
- Explosive mixture of 80 percent ammonium nitrate and 20 percent TNT (6)
- In the US, a hanging or curtain (5)
- Orders issued by a monarch or lawgiver (6)
- 27 & 8. The decathlon gold medal winner at the 1984 Olympics (5,8)
- Sodium carbonate or bicarbonate (4)
- 30 & 5 Down. Famous, long-running play by Agatha Christie (3,6)
- Deep South "cotton state" of the US (7)
- "After a momentary silence spake Some Vessel of a more --- Make..." (Omar Khayyam) (8)
- An extract obtained by distillation (7)



DOWN

- Canvases attached to bed-like frames by springs, used by acrobats, gymnasts, etc (11)
- The maximum effective distance of a projectile fired from a weapon (5)
- The clever waiting-woman and confidante of Portia in The Merchant of Venice (7)
- Opera by Rossini, based on a play by Shakespeare (6)
- See 30 Across
- An era in history, science, life, etc with a defining characteristic (5)
- Principal monetary unit of Costa Rica (5)
- The capital of the kingdom of Morocco (5)
- Variety of cheese named after a district of North Yorkshire (11)
- A grave marker (9)
- Stiff, unyielding, not flexible (5)
- Fruit similar to small, brown apples, eaten when decayed (7)
- Nocturnal lemur of Madagascar (3-3)
- Surname of the poet whose works include The Ecstasy, Death Be Not Proud, etc (5)
- See 10 Across
- "For mine own part, I shall be glad to --- of noble men," Julius Caesar (Act 4, Scene 3) (5)

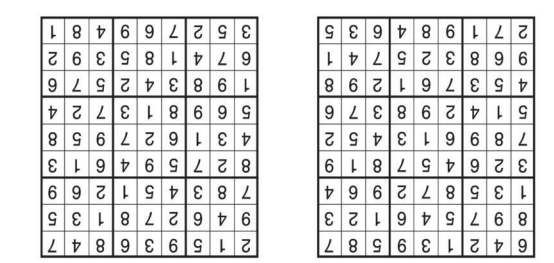
SOLUTIONS

ACROSS: 1 Toronto; 8 Thompson; 9 Hintze; 10 Las; 11 Crow; 14 Press; 15 Ethane; 16 Short; 18 Larvae; 20 Amato; 22 Drape; 24 Edicts; 27 Dally; 29 Soda; 30 The; 31 Alabama; 32 Ungainly; 33 Essence. DOWN: 1 Trampolines; 2 Range; 3 Nerissa; 4 Orléans; 5 Mousetraps; 6 Epoch; 7 Colon; 12 Rabat; 13 Wensleydale; 17 Headstone; 19 Rigid; 21 Medias; 23 Aye-aye; 25 Dome; 26 Casas; 28 Learn.

General Knowledge Crossword
 ACROSS: 1 Greasepaint; 9 Isolate; 10 Thow; 11 Fated; 12 Garbage; 13 Lament; 14 Minutes; 16 Setback; 17 Assault; 19 Beans; 21 Okapi.
 DOWN: 2 Roost; 3 Abandon; 4 Energy; 5 Alter; 6 Narrate; 7 Eiffel Tower; 8 Sweet Potato; 15 Asleep; 18 Omnibus; 20 Trout; 22 Extra; 23 Admire; 24 As You Like It.

Crossword
 UNLOCATED
 Gibraltar, Spanish Steps.
Niner
 Familia, Pompeii, Little Mermaid, Ponte Vecchio, Brandenburg.
Wordwheel Pathfinder
 Eiffel tower, Parc Güell, Acropolis, Leaning Tower of Pisa, Sacré

Codeword
 1=T-2-Q-3=N-4=U-5=P-6=L-7-G-8=V-9=W-10=S-11=C-12=D-13=R-14=A-15=F-16=H-17=L-18=L-19=X-20=B-21=A-22=E-23=K-24=Y-25=O-26=M



King, Kind, Rind, Raid, Paid, Pair.
Ladder
Wordwheel
CHEAPNESS
Niner
 UNLOCATED
 Gibraltar, Spanish Steps.

Enjoy Exclusive, Evergreen Spring Edition of Seasons



Following on from the fantastic response to our debut 'Winter' edition of Seasons, we're delighted to announce that Seasons 'Spring' edition has now Sprung.

As the days grow longer and our towns, villages and the countryside emerge from the long dark days of winter, we are all enjoying the arrival of the 'Spring' of 2026.

Pick up a copy locally for free, or simply browse on line
www.seasons-magazine.com

If you'd like your business to be featured in the next edition of Seasons, or if you'd like more details - just call **01527 588688** and speak to Kelly, Caroline, Roisin, Debra, Paul, Gareth or Sharon.
 Seasons magazine is brought to you, by your local Observer and your local Standard Newspaper Team

The 'Spring' edition of Seasons is a celebration of all things 'local'. It's uplifting, inspiring and quintessentially local across the three counties of Warwickshire, Worcestershire and the West Midlands.
 The beautifully glossy A5 magazine is freely available in print, from a major supermarket near you - and, the 'Spring' edition of Seasons is also available 24/7 on line and...it's being showcased across all of our local Observer and Standard Newspapers, websites and social media platforms, and will continue to be so, for the next 12 months.
 Enjoy the exclusive, evergreen, 'Spring' edition of Seasons by logging on to www.seasons-magazine.com
 You can still browse the 'Winter' edition of Seasons 24/7 and now, you can enjoy the 'Spring' edition of Seasons too!

Not concentrating could leave you on track for disaster, says campaign

PEOPLE in the West Midlands have a dangerous overconfidence surrounding the risks when using railway level crossings.

Network rail said a survey revealed over eight in ten say they are confident they know the dangers – but only three per cent actually understand how long it takes an approaching 80mph train to stop.

And 14 per cent don't consider removing headphones when at a level crossing.

The findings come as Network Rail, British Transport Police (BTP) and the wider rail community came together to launch the first industry-wide level crossing campaign to raise awareness of the dangers around level crossings – called No Second Chances.

No Second Chances – primarily aimed at 18-34-year-olds through a series of three uncompromising 20-second films – raises awareness of the dangers of not using a level crossing properly and the consequences of being distracted.

Distraction is a common risk at level crossings, particularly among adults aged 18 to 34, who are more likely to admit to behaviours that reduce awareness of their surroundings.

The No Second Chances campaign marks a new joined-up way of working for the rail sector on safety communications, ahead of the establishment of Great British Railways (GBR).



The survey revealed 63 per cent of residents feel confident they could move out of the way in time if a train appeared while they were crossing.

But 96 per cent don't realise that it takes approximately one mile for a train travelling at 80mph to come to a complete emergency stop – and that's not the fastest a train can travel on the network.

Anthony Bonell, level crossing

manager for Network Rail Central route, said: "Across the West Midlands and beyond, level crossings are part of everyday journeys – to work, to school, and out with friends. But it only takes one missed warning or one moment of distraction for things to go wrong, because trains can be on you far quicker than you think and they need a long distance to come to a stop.

"We're hoping the newly launched

No Second Chances campaign helps those messages cut through. When you reach a crossing, slow down, give it your full attention, and make sure you've clearly checked it's safe before you step or drive onto the crossing.

"Waiting a few extra seconds is always better than taking a risk."

Chief Inspector Joseph Gorman, British Transport Police, said: "Everyone, pedestrians and driv-

ers alike, should pay extra care and attention to level crossings as the consequences for any misuse can be catastrophic.

"You might think you're simply saving some time, but if you miss or deliberately ignore the warning signs then you could be placing yourself or others in incredibly serious danger, and that is never worth it.

"We respond to incidents at level crossings every month, and through patrols, CCTV, and close work with our Network Rail partners, we will always seek to prosecute serious offences to deter misuse. Please think wisely as you approach level crossings, be patient, and don't take any risks."

There are around 6,000 level crossings in operation across the country, and each is different depending on its surroundings and usage.

These include crossings which range from footpaths requiring users to stop, look and listen for approaching trains before deciding if it safe to cross, through to those with full barriers, audible alarms, and road traffic light signals on public roads.

Across the West Midlands and surrounding areas, there were 217 level crossing incidents recorded in the last 12 months, including 13 classed as 'near misses'.

For more visit www.networkrail.co.uk/communities/safety-in-the-community/safety-campaigns/no-second-chances/

Artrix Bromsgrove
Book Now
01527 361324



www.artrixbromsgrove.co.uk

FRIDAY 15 MAY
AT 7.30PM



DIRECT FROM
THE CAVERN



FEATURING HITS FROM ALL YOUR FAVOURITE CAVERN CLUB ARTISTS

Motoring

www.carfinder247.co.uk

TELEPHONE 01527 588688 FACSIMILE 01527 584371



New RS 5 launch

WITH their characteristic flared wheel arches, striking detailing and sizeable wheels the latest Audi RS 5 models make no secret of their tremendous performance potential.

At the front, the hallmark RS honeycomb Singleframe grille is linked by a dark mask to pronounced Air Curtains that streamline air flow, while vents in the wings add drama to the profile in conjunction with

blisters in the shoulder line that pay homage to the iconic Audi Ur quattro.

Below the tailgate with its neatly integrated spoiler, the trademark big-bore RS oval tailpipes are centrally positioned within a diffuser featuring aerodynamically optimised vertical fins and a motorsport-inspired red reflector.

"As the first high-performance plug-in hybrid, the RS 5 marks the beginning of a new era for the Audi Sport brand," said Audi UK Director, José Miguel Aparicio.

In the UK, the RS 5 Saloon and Avant models will be available with a choice of three specification options: RS 5, RS 5 Carbon Black and RS 5 performance Vorsprung.

At the entry point to the range, the RS 5 models ride on 20-inch 6-twin-spoke alloy wheels finished in dark Galvano silver and feature a black styling package taking in elements including the spoiler, window trim, door mirror surrounds, door handle inserts, RS badges and Audi rings. The blades in the front bumper, inserts in the side skirts and rear diffuser are also finished in gloss black, as is the Saloon's split-lip frontal spoiler. Darkened Matrix LED headlights incorporating driver-selectable active light signatures continue the theme, while at the rear the LED taillights are linked by a striking illuminated light strip.

As part of the upgrade to Carbon Black specification, the RS 5 gains larger 21-inch alloy wheels in the 6-twin-spoke design in Neodymium grey matte, along with a high gloss carbon finish for the rear spoiler, mirror housings, front air intake blades and side skirts.

In the RS 5 Saloon Carbon Black the lipped rear diffuser surround is also trimmed in high gloss carbon.

At the very top of the range, the RS 5 performance Vorsprung models make even greater impact thanks to exclusive RS performance bumpers incorporating further enlarged air intakes at the front and an even more distinctively styled rear diffuser, which houses matte black

tailpipes. Drivers can view real-time information about the interplay between the petrol engine and electric motor under acceleration and regenerative braking on the central MMI touch screen.

The Audi virtual cockpit also features RS-specific dials providing detailed data such as engine revolutions, speed, G forces, lap times, temperatures and individual tyre pressures.

It also houses a shift light for the eight-speed Tiptronic transmission.

The Audi driving experience function is configured to include track profiles for some of the world's most famous race circuits, but it is just as effective on private racetracks, automatically creating new track profiles based on a recorded lap.

Whether on road or track, the breathtaking power and torque output of 639PS and 825Nm delivered jointly by the 2.9-litre V6 TFSI and 130kW motor enables the RS 5 Saloon and Avant models to rocket from 0-62mph in just 3.6 seconds. The driver can activate a boost function to enjoy maximum acceleration in ten-second phases, optimising overtaking capability.

Where conditions allow, a top speed of 155mph is achievable in RS 5 and RS 5 Carbon Black versions, while RS 5 performance Vorsprung models feature an elevated 177mph top speed.



**Mechanical Repairs
M.O.T. Work Diagnostics
Servicing etc...**

01527 875565 • 07791 149235
Unit 5, Station Street, Bromsgrove B60 2BS



**CHARLES KENWARD
MOTORS LTD**

FOR
PRIVATE CAR, COMMERCIAL & FLEET
SERVICING,
MECHANICAL REPAIRS
MOT TESTING INCLUDING
CLASS 7 AND THE NEW CLASS 5
LIGHT (MINI BUSES)

VEHICLE RECOVERY SERVICE
VEHICLE DIAGNOSTICS
14 SHERWOOD ROAD,
ASTON FIELDS INDUSTRIAL ESTATE,
BROMSGROVE B60 3DR
TEL:
01527 875432/837070

**SELLING YOUR CAR?
WE PAY THE MOST**

We can visit you and pay immediately
Same day service

CAR BUYERS LTD
07831 245 313

Mount Pleasant Garage
A PLEASANT WAY OF MOTORING
Specialising in all MoT classes

Service and repairs to all makes and models

Book your MoT now to avoid disappointment

Tel: 01527 63000
213 Mount Pleasant, Redditch B97 4JG
Open Monday - Friday 8.00am - 6.00pm

Martin Floyd Motor Services
45 years experience locally

- All Aspects of Motor Servicing
- Repairs • Diagnostics
- MOTs @£50 (plus a free retest)
- Brakes • Clutches • Cam Belts

SAFE DRIVING THIS SPRING
Competitive Prices

...and a few comments from very satisfied customers:

*Such Helpful and Friendly service...
Kate and Martin were really accommodating in working around my work commitments
Polite and fast service, and... good price
Will return and recommend to friends - Thanks*

Martin Floyd Motor Services
Units 4 & 5, Woodrow Farm,
Woodrow Lane, Catshill,
Bromsgrove, B61 0PL

TO BOOK CALL 0121 453 7667



Learn from yesterday,
live for today,
hope for tomorrow.
Anonymous



Family Notices

Tel: 01527 588688 Email: reception@bullivantmedia.com

BIRTHDAYS

STACEY JOHNSON



Happy **40th** Birthday

on 7th May 2026

Lots of Love
Mom, Andy, Kirsty,
Jamie, Matt, Tom,
Dan & Max
xxx

DEATHS



HORACE EDWARD WOODWARD

Known as H to his many friends.
Sadly passed away peacefully
on 15th April 2026, aged 88 years.
Reunited with the Love of his Life,
his late wife Pam.

Much loved dad to his four children.
Dad had six grandchildren and two great grandchildren.

A service to celebrate Horace's life will be held at Redditch Crematorium on Friday 22nd May at 11.45 am, followed at The Abbeydale Community Club, Gibb's Road, Redditch B98 8JP where everyone is welcome to come and raise a glass for H. Please wear a Splash of colour.

Family flowers only please.

Donations if desired, to Cancer Research and Dogs's Trust.

c/o Thomas Brothers, Birchfield House,
494 Evesham Road Redditch B97 5JF
Tel: 01527 547777

DEATHS

Iris Dyer

(nee Coles)

Very sadly passed away 13th April 2026

Funeral to be held 21st May 2026 at 1.30pm at Vale Crematorium, Fladbury

Family flowers only

Donations preferred to Wythall Animal Sanctuary

DEATHS

EVANS Alan Charles

Sadly passed on 11th April 2026, aged 82.

Much beloved member of the family and kind to all who knew him.

The funeral will take place at Stourbridge Crematorium on 13th May 2026, at 11.00am. Family flowers only, and donations, if desired, to the British Heart Foundation.

Care of Marcus Adam's Funeral Directors, Halesowen.

If you have a message for a loved one, give our team a call



MEMORIAL SERVICES

As Time Goes By

YOUR LOCAL FAMILY RUN MEMORIAL SUPPLIER

Headstones, Cremation Tablets, Additional Inscriptions and Renovation Work

Web: www.astimegoesby.org.uk
Email: kfporter@blueyonder.co.uk

Please call 01527 550505

To arrange a home visit or to find out our opening times

Unit 5, Dunlop Road, Hunt End Industrial Estate
Redditch B97 5XP

"MEMORIALS THAT REFLECT A LIFETIME"

If you have a message for a loved one, call our team on **01527 588688**

FUNERAL DIRECTORS

James Giles and Sons Ltd
Est. 1918
The Complete Funeral Directors

Allow our family to care for your family

www.jamesgilesandsonsltd.co.uk

BROMSGROVE 01527 872318 **DROITWICH** 01905 783188 **STUDLEY** 01527 852213

PRE-PAID FUNERAL PLANS AVAILABLE

FUNERAL DIRECTORS

An Independent Family Owned Funeral Directors

THOMAS BROTHERS

Family owned funeral homes in Redditch, Wythall, Alvechurch, Bromsgrove & Alcester. We provide a friendly, dignified service paying special attention to detail.

REDDITCH • BROMSGROVE
01527 547777 01527 831700

WYTHALL • ALVECHURCH • ALCESTER
01564 822001 0121 445 3422 01789 330939

"A family concern"

www.thomasbrothers.co.uk
email: admin@thomasbrothers.co.uk

FLORAL TRIBUTES

TNS
THE NURSERY SHOP

519 Evesham Road,
Crabbs Cross,
Redditch, B97 5JP

Bespoke funeral flowers personally designed for your loved one

flowers@nurseryshopredditch.co.uk
www.nurseryshopredditch.co.uk

Tel: 01527 550 700



Learn from yesterday,
live for today,
hope for tomorrow.
Anonymous



Tel: 01527 588688 Email: reception@bullivantmedia.com

Family Notices

FUNERAL DIRECTORS



MORTONS
FUNERAL DIRECTORS

Say goodbye your way

Reassure your loved ones that your funeral is the one you wanted — not the one they hoped you wanted. Choose from a fully prepaid plan or simply record your wishes with no upfront payment.

Arrange an appointment today

0121 459 9111

Offices in Northfield, Cotteridge and Rubery



Professionally qualified independent funeral directors
For more information, visit mortonsfunerals.co.uk



FUNERAL DIRECTORS



R.L.Rea
Funeral Directors Ltd.

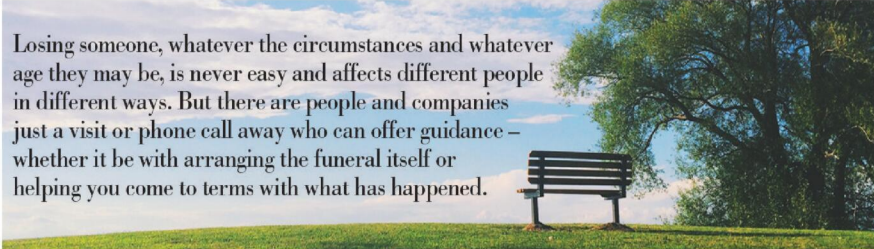
- A Family Firm Established in 1967
- Your Local, Independent Complete Funeral Directors and Memorial Masons
- Dedicated to Providing a Personal & Professional Service 24 hours a day, 365 days a year
- Private Chapel of Rest
- Pre-arranged Funeral Plans Available
- Direct Cremation Available

www.rlreafuneraldirectorsltd.co.uk

info@rlreafuneraldirectorsltd.co.uk



BROMSGROVE 01527 831723

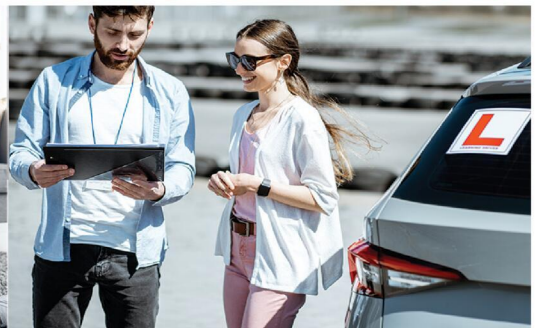


Losing someone, whatever the circumstances and whatever age they may be, is never easy and affects different people in different ways. But there are people and companies just a visit or phone call away who can offer guidance – whether it be with arranging the funeral itself or helping you come to terms with what has happened.



Whatever the occasion, why not send your loved ones a message....

Call our team on **01527 588688**



Appointments

www.careerfinder247.co.uk

TELEPHONE 01527 588688 FACSIMILE 01527 584371



BROMSGROVE SCHOOL

We currently have an opportunity at WINTERFOLD HOUSE SCHOOL for a **TEACHING ASSISTANT**

To commence September 2026, we seek a qualified Teaching Assistant (Level 3) to join our team here at Winterfold House School

Monday to Friday 7.45 a.m.- 6.00 p.m. term time only.

Full details and application forms are available on the school website: www.winterfoldhouse.co.uk

Closing date for all applications is Monday 11 May 2026.

The School is committed to safeguarding and promoting the welfare of children and young people.

Applicants must be willing to undergo child protection screening including checks with past employers and the Disclosure Barring Service.



BROMSGROVE SCHOOL

We currently have an opportunity at WINTERFOLD HOUSE SCHOOL for a **TEACHING ASSISTANT - EARLY YEARS**

To commence September 2026, we seek a qualified Teaching Assistant (Level 3) to join our team here at Winterfold House School

Monday to Friday 8.30 a.m.- 3.30 p.m. term time only, plus four weeks of holiday club work during school holiday periods.

Full details and application forms are available on the school website: www.winterfoldhouse.co.uk

Closing date for all applications is Monday 11 May 2026.

The School is committed to safeguarding and promoting the welfare of children and young people.

Applicants must be willing to undergo child protection screening including checks with past employers and the Disclosure Barring Service.

FLAIR • DISCIPLINE • ACADEMIC RIGOUR

BROMSGROVE SCHOOL

FOUNDED 1553

A leading co-educational Boarding and Day School with excellent facilities set in 100 acres of attractive grounds.

Required for our Pre-Prep School a

LUNCHTIME SUPERVISOR

We currently have an opportunity for a Lunchtime Supervisor to join our team working Monday to Friday 11.15 a.m.-1.45 p.m., term time only.

Full details and the online application form is available through the School website www.bromsgrove-school.co.uk

Closing date for all applications is Monday 11 May 2026

The School is committed to safeguarding and promoting the welfare of children and young people. Applicants must be willing to undergo child protection screening, including checks with past employers and DBS

FLAIR • DISCIPLINE • ACADEMIC RIGOUR

BROMSGROVE SCHOOL

FOUNDED 1553

We currently have the following opportunities at our Pre-Preparatory School

NURSERY KEYWORKERS

Monday to Friday 8.00 a.m.-5.00 p.m. (52 weeks of the year) or Monday to Friday 8.00 a.m.-5.00 p.m., term time only plus 8 weeks of work during school holiday periods.

We seek qualified, professional and personable individuals to carry out these roles, working with Nursery aged children in school.

Closing date Monday 11 May 2026

Full details and application forms are available on the school website: www.bromsgrove-school.co.uk

The School is committed to safeguarding and promoting the welfare of children and young people. Applicants must be willing to undergo child protection screening including checks with past employers and the DBS.



www.taurustaxis.co.uk

Are you Looking To Top Up Your Salary or Pension?

Then we could Help !!

DRIVERS REQUIRED

With or without Taxi Badge / Vehicle
Clean Licence Essential

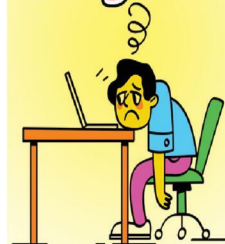
Holiday pay will be accrued and paid

We also require **PSV DRIVERS**

with valid CPC card & training, part time hours, very good rates of pay.

**For Further Details Please Call
07773 022 239**

Current job not really doing it for you?



Don't worry, we have plenty of recruitment ads throughout our titles, both in print and online.

Check them out!

- Standard CoventryObserver
- Standard Rugby & Leamington Observer
- Standard Preston Observer
- Standard South & West Observer
- Standard East Observer
- Standard MalvernObserver
- Standard WorcesterObserver

Bullivantmedia GROUP LIMITED

GOT A VACANCY TO FILL?

Contact Caroline or Kelly on
01527 588625 • 01527 588749

caroline.birkenhead@bullivantmedia.com | kelly.taylor@bullivantmedia.com

Appointments

www.careerfinder247.co.uk

TELEPHONE 01527 588688 FACSIMILE 01527 584371



DRIVERS

Full and part time drivers required for home to school contracted transport. Competitive rates of pay and flexible working hours.

Company vehicle provided, and full assistance obtaining your private hire licence will be given.

For further details please call

01527 60000

or email accounts@a2b60k.co.uk

Gold Crest

Require the following in the Redditch, Bromsgrove, Droitwich and Kidderminster areas

Part Time Drivers

Transporting children to school. Vehicle provided.

– ALSO –

Passenger Assistants

Part time hours with or without experience.

Contact **07399 848 639**

JUST CAN'T GET THE STAFF?

Bullivantmedia
GROUP LIMITED

We can offer you
GREAT LOCAL COVERAGE
IN PRINT & ONLINE

Contact
Caroline or Kelly

01527 **588625**

01527 **588749**

caroline.birkenhead@bullivantmedia.com
kelly.taylor@bullivantmedia.com

Classified

www.directory247.co.uk

TELEPHONE 01527 588688 FACSIMILE 01527 584371

PUBLIC NOTICES

NOTICE UNDER SECTION 27 OF THE TRUSTEE ACT 1925

Consort Equipment Products Pension Plan
 This notice is addressed to former and current employees of Consort Equipment Products Limited and their next-of-kin/dependants.
 Notice is hereby given, pursuant to Section 27 of the Trustee Act 1925, that the Trustees are winding up the Consort Equipment Products Pension Plan ("the Scheme").
 If you are a creditor or if you were or are an employee of "Consort Equipment Products Limited" and a member of the Scheme and think you are entitled to benefits under the Scheme, but have not been contacted in respect of these benefits, or you are a spouse, civil partner, child or dependent of a deceased member, please contact the Trustees of the Scheme in writing at Consort Equipment Products Pension Plan, Hughes Price Walker Ltd, Pembroke House, 15 Pembroke Road, Clifton, Bristol, BS8 3BA, or by the e-mail address consort@highespricewalker.co.uk. Any claim must be registered with the Trustees by 8 July 2026.
 You should include your full name, date of birth, current address, National Insurance number, a note of any benefits that you think you are entitled to, any relevant documentation supporting your claim and, if applicable, when you worked for the company.
 The Trustees have insured the benefits for the members of this Scheme by means of a bulk annuity purchase with an insurer. The Trustees transferred the assets to the insurer who is liable for members' benefits.
 The Trustees of the Scheme shall not be liable to any person in respect of any claim, interest or entitlement they may have in relation to the Scheme but of which the Trustees have not been notified by 8 July 2026.
 If you already receive a pension from the Scheme, or you have received announcements from the Trustees regarding the winding-up and transfer of the Scheme's liabilities, you do not need to write to the Trustees as they already hold full details about your entitlement.
 Issued on behalf of the Trustees of the Consort Equipment Products Pension Plan.

PUBLIC NOTICE - LICENSING ACT 2003 APPLICATION FOR A PREMISES LICENCE OR CLUB PREMISES CERTIFICATE TO BE GRANTED UNDER THE LICENSING ACT 2003

Name of applicant/club: **Papa Johns Droitwich**
 Postal address of premises/club premises or description: **Papa Johns, 1 Victoria Square, Droitwich Spa, Worcestershire, WR9 8DE**
 The applicant proposes to carry out the following licensable activities or qualifying club activities on or from the above premises/club premises: **Late Night Refreshment License everyday 2300 to 0400**
 Representations by interested parties or responsible authorities should be made in writing to Worcestershire Regulatory Services, Wyre Forest House, Finepoint Way, Kidderminster, DY11 7WF or enquiries@worscsregservices.gov.uk by: **27 May 2026**
 The record of the application is available for inspection by appointment.
 Please call us on 01905 822799 for an appointment.
 IT IS AN OFFENCE, LIABLE ON CONVICTION TO AN UNLIMITED FINE, UNDER SECTION 158 OF THE LICENSING ACT 2003 TO KNOWINGLY OR RECKLESSLY MAKE A FALSE STATEMENT IN, OR IN CONNECTION WITH, AN APPLICATION

Goods Vehicle Operator's Licence

Mr John Paul Finnegan trading as Mr John Paul Finnegan of Harborough Farm Barn, Birmingham Rd, Blakedown, Kidderminster, DY10 3LH is applying for a licence to use Wildmoor Grabaway, Sandy Lane, Wildmoor, Bromsgrove, B61 0QR, as an operating centre for 2 x HGV Class 2 goods vehicles and 0 trailers.
 Owners or occupiers of land (including buildings) near the operating centre(s) who believe that their use or enjoyment of that land would be affected, should make written representations to the Traffic Commissioner at Quarry House, Quarry Hill, Leeds, LS2 7UE, stating their reasons, within 21 days of this notice. Representors must at the same time send a copy of their representations to the applicant at the address given at the top of this notice. A Guide to Making Representations is available at www.gov.uk/object-hgv-operator-licence.

PUBLIC NOTICE - LICENSING ACT 2003 APPLICATION FOR A PREMISES LICENCE OR CLUB PREMISES CERTIFICATE TO BE GRANTED UNDER THE LICENSING ACT 2003

Name of applicant/club: **The AfterCourt Ltd**
 Postal address of premises: **The AfterCourt Ltd, OMNI Padel, Astwood Business Park, Astwood Bank, Redditch B96 6HH.**
 The applicant proposes to carry out the following licensable activities or qualifying club activities on or from the above premises/club premises: **The premises comprise a bar located within an indoor padel centre. The bar will serve alcohol and light refreshments to customers using the wider sports facility, as well as general visitors.**
 The premises include a designated indoor bar area with seating and a small number of recreational features such as darts, operating as a social space ancillary to the padel centre.
 There is also an external area associated with the premises which may be used for the consumption of alcohol served from the bar. This area is not freely accessible to the general public and will be managed and controlled by staff at all times.
 Representations by interested parties or responsible authorities should be made in writing to Worcestershire Regulatory Services, Wyre Forest House, Finepoint Way, Kidderminster, DY11 7WF or enquiries@worscsregservices.gov.uk by 2nd June, 2026.
 The record of the application is available for inspection by appointment.
 Please call us on 01905 822799 for an appointment.
 IT IS AN OFFENCE, LIABLE ON CONVICTION TO AN UNLIMITED FINE, UNDER SECTION 158 OF THE LICENSING ACT 2003 TO KNOWINGLY OR RECKLESSLY MAKE A FALSE STATEMENT IN, OR IN CONNECTION WITH, AN APPLICATION

CONNIE ELIZABETH MARY BROWN
 Deceased
 Pursuant to the Trustee Act 1925 anyone with a claim against or an interest in the Estate of the deceased, late of 14 Petersfield Drive, Droitwich, WR9 7AR, who died on 02/03/2026, must send written details to the address below by 09/07/2026, after which the Estate will be distributed with regard only to claims and interests notified.
MFG Solicitors LLP,
 3rd Floor Waterloo House,
 20 Waterloo Street,
 Birmingham, B2 5TB.
 Ref: BR003571.0004

SIMON ARTHUR FORD DAVIES
 Deceased
 Pursuant to the Trustee Act 1925 anyone with a claim against or an interest in the Estate of the deceased, late of East Barrow, Wild Road, Medstead, Alton, Hampshire, GU34 5NJ; Mulberry Tree Hill, Droitwich, Worcestershire, WR9 7SS, who died on 08/03/2026, must send written details to the address below by 09/07/2026, after which the Estate will be distributed with regard only to claims and interests notified.
Russell-Cooke LLP,
 2 Putney Hill, Putney,
 London, SW15 6AB.
 Ref: 11/SZM/817272

CAR FOR SALE

SUZUKI CELERIO
2018, 5 Door Hatchback
 Excellent condition throughout.
 Only 18,000 miles.
 FSH & MOT.
 1 lady owner from new.
 Any inspection.
£5,250
07980573628

MISCELLANEOUS

BEDS NEW Doubles £95 Singles £59 King size £159. Second hand doubles £49 Singles £29 Fridges £49 Freezers £59 Can deliver 07703 925662

MOBILITY SCOOTER
'Litemap Balance Plus'
 Breaks into 3 pieces for car. Range 10 miles. Very safe balance. Charger. New batteries. Could deliver.
£280
01789 778174

MISCELLANEOUS

RECLINER CHAIR electric rise & recline £169 Manual recline chair £60 High seated chair £40 Can deliver 07703 925662

AS new pressure for fence painting etc £20 0121 744 7579

OVER 20 Hornby train & accessories which need renovating hence price £20 the lot 0121 744 7579

3 draw fridge freezer £55 07355688601

2 draw fridge freezer £50 07355688601

2 built in CD freeview built in TV's £30 each 07355688601

LEATHER swing desk chair £20 07355688601

TV & DVD stand £50 one 01527 833604

S H O P A B I K E, serviced £50 one 01527 833604

GOLF set 2 woods 9 irons putter, bag, trolley £75 one 01527 460742

KIMBARA classical guitar with case foot rest & music stand £80 one 01527 851187

RUNNER BEAN Plants, £2 a tray of 12 plants 8 foot canes 75p. 01905 778926

QUALCAST Rotary Lawnmower - good working order £20 07743929558

MISCELLANEOUS

MASTERLOCK fire and water proof safe box with two keys 10lbs unused £45 07837727454

6 Skovby dining chairs tubular metal 'H' frame beige upholstery. £150 one 01527 540006

ROLAND Cartier leather shoes with mesh inserts, peep toe, stiletto heel, colour pewter size 8. Still in box. Worn once indoors. Excellent condition. Original cost was £65.00 Will accept £15.00 Tel: 07934132759

WILLOW tree demdaco "Thank You" Plaque by Susan Lordi. In original box £3.00 Tel: 07934132759

DURABLE travel suit / garment bag with shoulder strap, multiple zip closure pockets, two hangers £3.00 Tel: 07934132759

NESCAFE Dolce Gusto Coffee machine with pods (used) £20 07743929558

S T O W A M A T I C electric golf trolley brand new battery fitted excellent condition £150 01562 825253

TABLE & 4 chairs 112cm x 72 cm height 74cm 07713769333

MISCELLANEOUS

S T O W A M A T I C electric golf trolley brand new battery fitted excellent condition £150 01562 825253

COSATTO yellow brown pram, carry cot, rain cover, bag & more=like new! £300 For details & photos call 07936568004

AMELIA by toT's white crib cot 180x80cm sturdy solid wood - excellent condition! Complete with mattress, quilt & pink covers. £185 For details & photos call 07936568004

TWO corded hedge trimmers for sale one 51cm cutter one 46cm cutter, in fair condition. Both with extension leads £15 each. 07518902804 Kidderminster

2 x lamb creep feeders 24 feeding slots £250 and £230 07813 443674

HOBBYCRAFT New clear glass jam jars in original cellophane & cardboard wrapper. £8.00 Buyer Collects. Tel 07523 431568

7 bags of mixed clothing suitable for cat boot sale £10 each 0121 474 6174

TV & DVD stand £50 one 01527 833604

MISCELLANEOUS

SPEAR & Jackson Cordless Lawnmower with 2 battery + charger £95 Cordless Grass Trimmer with battery + charger £55 07767847271 Stratford on Avon

GOLF Set 2 woods, 10 irons, putter, bag, trolley £75 one 01527 460742

LIGHT oak dining table & chairs £50 one 07799851517

TWO Fish Aquariums 1 small, 1 medium good condition & extras, boxed £30 01527 878187

WANTED

****WANTED: Vinyl Records CDs Cassettes Vintage or New****
 Seeking classic rock, jazz, indie and rare finds. Cash paid
 Call or text: 07765 142354 Or 01527 893992
 Or email: welston@live.com
 Paul (Albatross & Doomed Records)

WANTED

WANTED
Motorcycles and Scooters
 Any cc, condition or age, good prices paid
07944 781 933 | 01926 257 643

Check out our E-Editions!



www.redditchstandard.co.uk/editions
 www.bromsgrovestandard.co.uk/editions
 www.droitwichstandard.co.uk/editions

The same paper you love on your **mobile, tablet and computer**

Classified

www.directory247.co.uk

TELEPHONE 01527 588688 FACSIMILE 01527 584371

SERVICES

BUILDERS

BRICKWORK H.Boot

All Types
Garages
Garden Walls
Extensions
Fully Qualified Tradesman
Call
07778 705570
07789 064138
WhatsApp Email: hanstheboot@hotmail.com

CARPETS

Clift Carpets of Redditch

Choose at home service.
All qualities of Carpet, Vinyl & LVT
supplied
& fitted.



Old flooring
taken up!
Furniture
moved!



Call Barry for a FREE quotation
07753 800737

www.cliftcarpets.com

CLADDING/ GUTTERING

My Clean Gutters

100% SATISFACTION

CUTTERING FROM
£39

100% BEST QUALITY

Freephone **0800 0463373**
Birmingham **0121 652 0374**
Redditch **01527 900 787**
Mobile **07376 915 527**

www.my-cleangutters.co.uk
mycleangutters777@icloud.com

GARDENING SERVICES



JT's Trees & Gardens

Fully Insured Professional
Tree & Garden Services
Free In-Person Quotes

Call/WhatsApp@
07376721401

Instagram: jts_trees

Email:
jamietailor@jstreeandgardens.com

GARDENING SERVICES

JFS Garden Services

Fencing, Turfing, Hedge Cutting, Tree Surgery,
Stump Grinding, Jungles Cleared,
Grass Cutting/Regular Mowing,
Domestic, Commercial enquiries welcome.
For a free Competitive Quote
07977 497 440 • 01527 458 104
www.jfslandscapes.co.uk



GARDENING SERVICES

GRASS CUTTING

COVERING REDDITCH,
STUDLEY & BROMSGROVE

No job too small
Locally based

Call **07599 270652**



DECORATING & PAINTING

DA SMITH DECORATORS

Interior & exterior
painting & decorating
Property Repairs

40 years experience

Email: Derekalansmith@live.co.uk

07941 689 655 • 01527 836227

GARDENING SERVICES

Dragonfly GARDENING

Specialists in plant care and pruning

- Grass Cutting
- Hedge Trimming
- Regular Maintenance

Your local expert plantsman

33 Years Experience in Horticulture
with a local major Garden Centre
Registered Waste Carrier

CRB CHECKED • FULLY INSURED

07814 510797

01527 878965

Reliable Friendly Service

HANDYMAN

LOCAL HANDYMAN AVAILABLE

in Redditch
Good rates offered
Experienced builder by trade

Call Steve on
01527 69309
07541 279957

KITCHENS

S.W INSTALLATIONS

Kitchens &
Bathrooms
FREE DESIGN &
QUOTATION

QUALITY KITCHENS
& BATHROOMS
SUPPLIED & FITTED

PLUMBING,
CARPENTRY, TILING,
WORKTOP & DOOR
REPLACEMENT

(Supply & fit, supply only or fit only)
LOCAL TRADESMAN
20YRS EXPERIENCE
NO JOB TOO SMALL
07971 684 353

LANDSCAPING

D.A. TAYLOR

LANDSCAPING
Fencing • Slabbing • Conifers
Hedge Work

CLEARANCE
Gardens • Rubbish • Sheds • Large
& Small Trees Felled, Lopped and
Shaped • Turfing • Shed Base

FREE QUOTATIONS

01527 870914 • 0771 768 2816

ROOFING

POWELLS ROOFERS & BUILDING SERVICES

- Roof Tiling • Garage Roofs • Flat Roofs
- Chimneys rebuilt and re-pointed
- Garage Conversions • Driveways
- Building Maintenance • Extensions

Powells Roofing & Building Services are a local
Redditch based company

C&G Qualified with over 15 years local roofing and
building services experience

For more details, please call
07952 797 973 or 01527 454325

SKIP HIRE

A&S SKIPS

A Division of A&S Developments (Redditch) LTD

- 2, 4 & 7 yard skips
- Skips with drop front doors guaranteed
- Prompt and reliable service
- Competitive rates

Tel **01527 459 238** • Mob **07788 112028**

VISA www.asskips.co.uk MASTERCARD

Waste carrier No. CB0U 169 207

Redditch Skip Hire Ltd

For all your domestic and
commercial skip requirements



4-40 yard skips available • Drop fronts -
please ask when ordering
Open or enclosed 90% of waste recycled



- No room for a skip. Book our man with a van service
- Prompt, reliable service
- 2 hour arrival slot
- Next day service

Call **01527 63644**

Or visit us at:

www.redditchskiphire.com

Waste Carrier No. CB0U122354

TREE SURGEONS

Call within 48
hours to receive
a 20% Discount

TREE & LANDSCAPE
Specialists

Tree & Landscape Specialists is a trusted, professional company with
a great reputation to uphold and have over 20 years experience in the trade.

- Tree Work • Paving • Fencing • Artificial Grass • Astro Turf • Patios

No job is too big or too small • Fully Insured

Contact us today FREEPHONE: 0800 747 1704 • LANDLINE: 01527 906 577
treeandlandscapespecialists@gmail.com
www.treeandlandscapespecialists.co.uk
PHOTO BY Google

WANTED
Motorcycles and Scooters
 Any cc, condition or age,
 good prices paid
07944 781 933 | 01926 257 643

Standard 
SPORT



9 772040 128006
 Published by Bullivant Media Group Ltd, Webb House,
 Church Green East, Redditch, Worcestershire B98 8BP
 Printed by Newsquest, Newspaper House, Osney Mead,
 Oxford, Oxfordshire OX2 0EJ

LANDMARK
 LANDSCAPING & DRIVEWAYS
 FREEPHONE 0800 191 0282
 www.landmarkdriveways.co.uk
 Honey Orchard, Doverdale, Droitwich, WR9 0QB

- Block Paving • Patios • Slabbing • Driveways
- Tarmacadam • Brickwork • Turfing • Graveling
- Resin Bond • Paths • Forecourts • Fencing

All Work Guaranteed for 5 Years - No Deposit Required

www.droitwichstandard.co.uk/sport **BRINGING YOU ALL THE LATEST SPORTS NEWS AND VIEWS FROM THE AREA**

More play-off final agony for Spa after defeat against rivals Raiders

by **Aaron Sutcliffe**
 aaron.sutcliffe@bullivantmedia.com

FOOTBALL: DROITWICH Spa suffered a third play-off final defeat in the space of four seasons after losing 4-1 at home against Worcester Raiders.

Spa produced an uncharacteristic display in the final to suffer a heavy defeat against their local rivals at the King George Playing Fields.

A consolation goal from substitute Reiss Taylor-Randle proved in vain for Andy Crowther's side in front of more than 1,000 spectators.

Worcester stunned the home side as Jordan Murphy scored a hat-trick before Cameron Monteith added a fourth goal for the visitors.

Spa's season ultimately ended in disappointment following an impressive first campaign in the Hellenic League Premier Division.

Droitwich finished two places and six points ahead of Raiders in the league table while the game marked the fifth meeting between the two clubs this season.

Spa made a fast start as Charlie Tilley saw his effort fly past the top corner inside the opening couple of minutes.

And Perry Moss then saw his shot on the turn saved by Worcester goalkeeper Charlie Emery.

Raiders responded with a chance of their own as Spa goalkeeper Joe Stockton kept out Bailey Fuller's free-kick.

However, the visitors silenced the home crowd on 21 minutes when Murphy latched onto a weak backpass and rounded Stockton before firing into an empty net.

The Saltmen almost drew level just past the half-hour mark as Moss saw his effort deflect onto the post after James Lemon saw his penalty appeal turned down.

However, Raiders stunned Spa on 37 minutes when Murphy fired a shot across goal and into the bottom corner from 25-yards out to leave Droitwich with a mountain to climb at the break.

Spa continued to probe as Alex Dugmore saw two efforts blocked after powering a shot over the crossbar from the edge of the penalty area.

Lemon then shot straight at Emery before Murphy completed his hat-trick on 61 minutes with a deflected effort which looped over Stockton.

And Raiders scored a fourth goal five minutes later as Monteith tapped home from close range after Fuller broke clear of the Spa defence.

Spa scored a consolation goal on 75 minutes when Taylor-Randle ghosted in and chipped a shot beyond Emery.

However, Droitwich could not reduce the deficit further as the club's season ended in the cruellest possible fashion.



Joe Stockton palms a shot to safety in the play-off final. Picture by Mathew Mason.

 **LANDMARK**
 LANDSCAPING & DRIVEWAYS

- DRIVEWAYS
- PATIOS
- BLOCK PAVING
- TARMACADAM
- FENCING

No Deposits Required
 All Work Guaranteed

www.landmarkdriveways.co.uk

Call Free **0800 191 0282** for a free no obligation quotation. Alternatively, call us on Tel: **01905 886549**



EDWARDS CAR REPAIRS

- Engine tuning
- MOT preparation and submission for final MOT
- Cam belt replacement
- Clutch Replacement
- General repairs
- Welding
- Servicing
- Insurance work welcome
- Supply and fit all parts for all makes & models

All types of work undertaken, why not give us a call or just drop in

Rear of 8 Hewell Road, Barnt Green, Birmingham, B45 8NE
0121 445 5414
 Email - enquiries@edwardscarrepairs.co.uk

