

DROITWICH Standard

D.A. TAYLOR
LANDSCAPING
 Fencing • Slabbing • Conifers
 Hedge Work
CLEARANCE
 Gardens • Rubbish • Sheds • Large
 & Small Trees Felled, Lopped and
 Shaped • Turfing • Shed Base
FREE QUOTATIONS
 01527 870914 - 0771 768 2816

Friday, June 12th 2026 Week 24

[f droitwichstandard](https://www.facebook.com/droitwichstandard)

www.droitwichstandard.co.uk

[@DroitStand](https://twitter.com/DroitStand)

Your **FREE** edition - just pick one up and keep up with the news

ARTYFACTS  **Art & Craft Classes**

A wide range of art & craft classes and workshops now available. Learn oil or watercolour painting, papercraft, glass fusion, resin art and much more! Check our website or facebook page for details. More classes being added regularly!

www.artifactsbromsgrove.co.uk 56 Broad Street, Sidemoor, Bromsgrove, B61 8LL. 01527 577449

Picture Framing
Art Materials
Art Classes
Gallery

Community prize for 15-year-old's feats

by **Ryan Smith**
ryan.smith@bullivantmedia.com

AN 'EXCEPTIONAL' Droitwich teenager who has already been serving his local area for a decade, has been named Wychavon's youngest ever community star.

Matty Kenny, aged 15, began serving his community aged just five, supporting Remembrance events and the Royal British Legion's Poppy Appeal.

Matty later joined the Army Cadets, developing leadership, teamwork, and practical life skills that continue to shape his contributions to his community.

Last year, the teen helped launch the Droitwich Cycling, Walking and Wheeling Group and Matty also played a major role in establishing the town's 'bike bus'.

The teenager became one of the bike repair managers at the free repair hub on the Westlands estate, where he helped residents with safety checks and repairs.

Matty's research into the benefits of active travel has helped strengthen local understanding of how cycling and walking support mental health and physical wellbeing.

Alongside all that, Matty is an



Coun Richard Morris, left, and Coun Mark Goodge present exceptional teen Matty Kenny with his award. s

active member of Droitwich Spa Youth Council and the Worcestershire Youth Cabinet, representing young people and speaking up on issues that matter to them.

The Wychavon community stars programme celebrates people who give their time, skills and energy to make life better for others.

The awards highlight residents

who create real, lasting change in their communities.

Coun Richard Morris, Wychavon District Council leader, said: "For someone to achieve this at just 15 is extraordinary.

"Matty is an exceptional young man. His drive, kindness and determination have already made a real impact on Droitwich Spa.

"To achieve this level of community leadership at 15 is remarkable.

"He embodies everything our community stars celebrate and he is a fantastic role model for young people across Wychavon."

Visit droitwich-cycling-walking-wheeling.co.uk/ for more details about the Droitwich Cycling, Walking and Wheeling Group.

More cops on the beat

DROITWICH Police Station will be among those getting extra neighbourhood officers as part of a shared commitment from West Mercia Police's chief constable and the police and crime commissioner (PCC).

Two neighbourhood policing roles will be added.

The overall number of officers in the force will remain the same with the additional Droitwich officers created through a reprioritisation of other roles.

The move aims to better meeting community needs and improve the force's ability to respond to neighbourhood issues.

The changes are part of the PCC's safer communities plan, which aims to ensure officers are rooted in the heart of communities, focused on the issues that matter most to residents.

The officers are being posted now and will begin joining their new communities over the coming months.

Avery | **Droitwich Mews** 
 CARE HOME

Future Proofing Your Wishes
 Third Thursday of Every Month | From 2pm

Join Droitwich Mews for monthly advice sessions with Parkinson Wright, offering a welcoming space to discuss legal enquiries, future planning and important life decisions with experienced professionals.

01905 958716 averyhealthcare.co.uk
 Mulberry Tree Hill, Droitwich Spa, Worcestershire, WR9 75S



SUPERVALUE FURNITURE & BED CENTRE
YOUR LOCAL DROITWICH INDEPENDENT TRADER

QUALITY BRANDS FOR LESS

RANGE OF RISER RECLINERS IN STORE

FREE ACCESSORY PACK

UP TO 30% OFF

RISER RECLINERS OFFERS IN STORE

SEE OUR MAIN ADVERT ON PAGES 10 & 11

Film event outlines the challenges lying ahead

MORE than 150 people from across Bromsgrove and Redditch turned out to watch a powerful film about the climate and nature emergency facing the whole of the UK.

The screening of The People's Emergency Briefing was organised by Bromsgrove Climate Action and took place at Parkside on Tuesday evening.

Among those watching were residents, campaigners, councillors and climate change experts.

The evening was hosted by Kate Van Der Plank, a former district councillor and parish councillor, and the guest speaker on the evening was Elena Langthorn, the chair of the University of Worcester's sustainability forum.

The People's Emergency Briefing

started out with scientists delivering authoritative briefings on climate and nature breakdown to more than 1,200 politicians in Westminster.

For the 51-minute film, those speeches were then compiled to convey the complex climate and ecological science in an accessible, easy-to-understand way. These were interspersed - in a Gogglebox-style format - with reactions from people, including Jennifer Saunders, Deborah Meaden and others.

The film was hosted and led by naturalist, TV presenter and environment campaigner Chris Packham OBE.

Step-by-step, it looked at a 'cascade of crises' affecting all aspects of our everyday lives, including weather extremes, climate, the 'tipping point', food security, health,



The four co-chairs of Bromsgrove Climate Action - Judy Tipper, Ros Cooke, Susan Porter and Janet King with Kate Van Der Plank, Elena Langthorn from the University of Worcester and Elizabeth Margetts, the council's climate change officer. Picture by Tristan Harris. Copyright Bullivant Media Group Ltd. s

national security, nature, economics and energy transition.

It laid out the facts simply, along with some myth-busting 'home truths' about what the future could look like if important 'emergency' action - along the lines of a response similar to that of the Second World War - was not taken.

It also outlined what could happen if positive action was taken to address the climate emergency.

After the screening in Bromsgrove on Tuesday, those gathered took part in short discussions about the issues raised in the film.

These included the importance of teachers, schools and educators

getting the message across, bike buses for schoolchildren, cutting vehicle usage and more compulsory green additions to new homes, such as solar panels.

People, community groups and organisations are being urged to organise their own screenings of The People's Emergency and post-film discussions and lobby their MPs to get the film a 'prime time' showing on British television.

Afterwards, Coun Van Der Plank said: "It was a tough watch but there was also a lot of positives and some good discussions afterwards."

"I would urge people to organise their own screenings so we can

spread the word about what is happening here in the UK and what can be done to address it."

Ros Cooke, one of the co-chairs of Bromsgrove Climate Action, said: "It was a fantastic turn-out and a lot of people had their say on what had affected them and what they think should be done."

"Future action is being planned, along with more screenings."

Visit nebriefing.org/peb for more on the People's Emergency Briefing and how to organise group screenings and discussions.

Search for 'Bromsgrove Climate Action' at facebook.com for more on what is going on locally.

So much more than self storage

Wellesbourne, Shipston-on-Stour, Mickleton & Long Marston

We can help you move house, build an extension or start a new hobby

Call Lindsey 0800 772 0200
hello@beyondstorage.co.uk
Wimpstone Fields, Wimpstone
Stratford-upon-Avon CV37 8NN

Beyond Storage

Studley Glass

GLASS • MIRRORS • WINDOWS

We are your local glass and mirror suppliers.

We manufacture glass units of all types in our factory.

- All types of safety glass.
- Energy rated glass units.
- Leaded glass designs.
- Greenhouse glass.
- Woodburner glass.
- Stair glass.
- Misted units.
- Supply and replace.
- Table top glass.

Visit our salescounter or give us a call.
01527 857786

Sales@studleyglass.com
www.Studleyglass.com

Local Service • Expert Advice • Quality You Can Trust

PUBLIC NOTICES

For all your latest information on Planning Proposals, Traffic Notices, Goods Vehicle Operator Licences, Licences To Sell Alcohol and Probate Notices...

See page **30**

Pupils at Millfields First School can enjoy a good book in the new Reading Cabin. Picture by Marcus Mings 2426005MMR



Offering a place to go when it's time to read

YOUNGSTERS from Millfields First School celebrated the opening of a new Reading Cabin last Friday.

The addition in one of the playgrounds was made possible through generous fundraising donations from the school community and support from the Howdens Mental Health Grant.

The Reading Cabin, which is stocked with books, provides a place for children to go during break time and lunch if they want to

read. It was officially opened by author B Ware who led a whole school assembly and then ran a series of class workshops.

Headteacher Lisa Montandon said: "We'd like to thank everyone who supported the project and made the Reading Cabin possible."

"It will be wonderful for children's wellbeing and provides them with a place to go if they want to read for pleasure."

Fighting back is club's goal

A FUNDRAISING appeal has been launched to replace thousands of pounds worth of equipment stolen from Catshill Football Club.

The thieves struck overnight between Saturday and Sunday taking two ride-on lawnmowers and a large amount of football equipment used by players and volunteers.

Catshill FC has 22 teams, providing a grassroots platform for more than 400 players - from the mini-kickers, aged four, right through to 17 and open age groups.

Dean Mitchell, chairman of Catshill FC, said: "Like so many grassroots football clubs, we are run by hardworking volunteers and supported by local families who give their time, energy, and money simply for the love of the game."

"Every penny that comes into the club goes back into providing a safe, welcoming environment for children and adults to play football, build friendships, stay active, and be part of something positive in the community. "This theft has hit us hard."

The stolen equipment is essential for the club to maintain its pitches and support training and matchdays.

He added, without it, the impact on the club, teams and hundreds of local people who used the ground and equipment could be significant.

Appealing for help, he said: "We are asking for the support of our community to help us recover from this setback."

"Any donation, no matter how big or small, will go directly towards replacing the stolen



equipment and helping get Catshill Football Club back on its feet."

And they urged anyone unable to donate to consider sharing the page.

"Grassroots football is about more than just sport - it's about community, opportunity, friendships and giving young people a place to belong."

"Thank you for supporting Catshill Football Club. Together, we can rebuild and come back stronger."

A fundraising page has been set up with a target of \$4,500. As the Standard went to press, more than \$640 had been pledged.

Anyone wanting to donate should visit: gofundme.com/t/replace-ride-on-mowers-that-were-stolen-from-catshill-fc to pledge cash there.

Catshill FC Chairman Dean Mitchell has appealed for the community's help following the break-in. Picture by Marcus Mings 2426009MMR

JC GLAZING & REPAIRS LTD

A FRIENDLY, HONEST & RELIABLE SERVICE...

Have your double glazed units misted up?
Don't despair help is here!
WE CAN REPLACE THEM
 Call us for a free quote

ALL WORK GUARANTEED

- Locks
- Hinges
- Mirrors
- Misted Glass
- Safety Glass
- Decorative Glass
- Cat Flaps in Glass
- Conservatory Repairs
- Fascias, Soffits & Guttering
- UPVC Windows, Doors & Conservatories
- Log Burner Glass Supplied

ANYTHING TO DO WITH GLASS & WINDOWS

A-RATED WINDOWS SUPPLIED & FITTED

UPGRADE YOUR OLD U.P.V.C. WINDOWS

We can replace your existing glass with Energy Saving Glass & refurbish your frames at half the cost of new.

Patio Doors French Doors
 Front Doors Back Doors
 Composite Doors

Card payments accepted

Call Jon on 01527 857 786 or 07931 198 152

Longbridge Cladding & Roofing Ltd
A local team you can trust

SPECIALISTS IN ALL ASPECTS OF ROOFING

New Roofs - Roof Repairs - Flat Roofing
 Fascia, Soffits & Guttering - Cladding
 Moss Removal Chimney / Ridge Tile Repointing
 Local References Available - Free Quotations

For a FREE quote, contact the local company you can trust

Birmingham - 0121 667 8938
Redditch - 01527 906 586

Park House, Bristol Rd South, Rednal,
 Birmingham B45 9AH

www.longbridgecladdingandroofingltd.co.uk
sales@longbridgecladdingandroofingltd.co.uk

Branch landmark

THE REDDITCH branch of the Royal British Legion (RBL) celebrated its 105th anniversary with a 'right Royal knees-up' at Bridley Moor Social Club.

People gathered to pay tribute to the work the RBL has done across the town and the support given to soldiers and veterans.

Branch president Philip Jarvis, whose father Kenneth was a founding member of the local organisation, and sat on the original committee, spoke at the event.

Philip said: "My father would have been delighted we have celebrated the 105th anniversary of the opening of the Redditch Branch.

"It's wonderful we are still here after a century and it is a measure of how much the people of Redditch care about our veterans and servicemen and women."

Branch chairman Gerry Marsden added: "On behalf of all the committee, it is an honour and a privilege to continue in the footsteps of our forefathers.

"Fundraising is an important part of our work and we do invite all residents to join us to support our veterans at our 105th anniversary celebration."



Gerry Marsden, left, and Philip Jarvis at the event. s

Town remembers the D-Day heroes

by Ashleigh Osborne
ashleigh.osborne@bullivantmedia.com

THE 82nd anniversary of D-Day was marked in Redditch with a ceremony at the war memorial on Plymouth Road.

The town's Royal British Legion (RBL) president, Philip Jarvis, and chairman Gerry Marsden joined MP Chris Bloore; deputy lieutenant of Worcestershire major general Mark Armstrong; and armed forces and veteran representatives for a wreath-laying ceremony.

An RBL spokesperson said tens of thousands of courageous British and Allied soldiers, sailors and aircrew took part in the D-Day Landings – the largest seaborne invasion in history.

"We remember the service and sacrifice of all those involved," said the spokesperson, "commencing the liberation of France and Western Europe and turning the tide in the Second World War.

"Together with personnel from the United States, Canada, Australia, Belgium, Czechoslovakia, France, Greece, the Netherlands, New Zealand, Norway, Denmark and Poland, British forces showed immense courage, and a blood great sacrifice"

honour to lay a wreath and give a reading at the commemorations in Redditch, remembering those who served and those who never returned home. My sincere thanks to Redditch Royal British Legion for organising the service and for their continued work preserving the memory of those who served.

"As we reflect on D-Day, we remember all those who played their part in this extraordinary chapter of our history and pay tribute to their service and sacrifice.

"We will remember them."



MP Chris Bloore, left, gave a reading at the service. Right: Chairman Gerry Marsden led the parade. Pictures by Martin Attewell. s



ABBEY STADIUM

Swimming is a life skill for everyone. At Abbey Stadium, our qualified team helps swimmers of all ages gain confidence, stay active, and enjoy a lifetime of opportunities in the water.



LEARN 2 SWIM AT THE ABBEY STADIUM



RUBICON LEISURE

LEARN 2 SWIM TODAY SCAN THE QR CODE FOR MORE INFORMATION

Two men are due in court to face robbery and CEX charges

Raiders targeted the CeX shop in Bromsgrove. Picture by Marcus Mingins 2426006MMR



TWO Birmingham men have been arrested and charged after a robbery at the CEX shop on Bromsgrove High Street on Thursday, June 4.

John Nevan, 29, of Victoria Road in Handsworth; and Aaron Bacchus, 46, of Bracken Way in Sutton Coldfield, have both been charged with robbery. Nevan is due to appear at Worcester Crown Court on July 6.

Bacchus will appear at Kidderminster Magistrates' Court on the same day.

Shoplifting

A WOMAN has been charged with theft from a shop after an incident in Droitwich's Iceland supermarket.

Rachel Jones, of Sandles Close in Droitwich, has been charged with theft from a shop after the incident on Sunday.

The 40-year-old is set to appear at Worcester Magistrates' Court on June 23.

AN EVENING of short workshops will be held by Bromsgrove Astronomical Society at 8pm on Monday.

The session, at Bromsgrove RFC, in Finstall, will enable attendees to learn about solar telescopes, setting up and getting the most from a telescope, imaging with modern 'go-to' equipment and finding a way around the night sky.

Visitors can 'ask the scientist' any questions they have and there will be plenty of astronomy topics to enjoy.

Visit broms-astro.org.uk for more about the society.

THERE will be plenty of fun for all the family when the annual summer fayre takes place at St Godwalds Church in Aston Fields tomorrow (Saturday).

The event, from 2pm to 4pm in the church hall and garden, will feature a tombola and stalls selling home-made cakes, bedding plants, gifts, 'nearly-new' items and more.

Strawberry cream teas will be served during the afternoon, there will be a display of Enfield motorcycles in the church hall car park and everyone can join in with performances from a ukulele group and singers.

Supermarket gets green light for Homebase site

by Tristan Harris
tristan.harris@bullivantmedia.com

PLANNING permission has been granted for Sainsbury's to convert Bromsgrove's former Homebase store into a new supermarket.

Sainsbury's said it was excited the proposals, for the Brook Retail Park, had taken another step forward.

The retailer's multi-million-pound

investment, to regenerate the vacant unit, can now proceed, reportedly creating around 100 jobs.

Sainsbury's has plans to expand the number of its supermarkets, especially in towns such as Bromsgrove, which lacks one.

The new supermarket will build on the retailer's Bromsgrove Sainsbury's Local store, on Stourbridge Road, and its Argos store, on High Street.

Sainsbury's' proposals followed community consultation events

which included an online consultation hub and discussions with councillors and other interested parties.

More than 800 people engaged with the process and more than 80 per cent of respondents expressed their support for the new store.

Christian Wakelin, Sainsbury's' head of supermarket property development, said the business is delighted Bromsgrove District Council has approved the plans.

"This store will represent a significant investment in Bromsgrove,

delivering new jobs and a range of other benefits including the addition of a fantastic new place for customers to shop locally," said Christian. "We're proud to be regenerating this former Homebase site and we look forward to serving the local community for many years to come."

Sainsbury's said it is passionate about providing good food for everyone and added, it is looking forward to having a bigger presence in Bromsgrove.

DORSET HOUSE NURSING HOME

Enriching the Lives of the Older Generation

Set in the heart of Droitwich Spa with beautiful landscaped gardens and traditional homely interiors, Dorset House offers award-winning Residential, Nursing and Dementia Care.



Contact our wonderful team & arrange a tour of our beautiful home:

T: 01905 772 710 A: Blackfriars Avenue, Droitwich Spa, WR9 8DR

WWW.DORSETHOUSE.CARE

Studley Christadelphians

Meet on Sundays at:
STUDLEY INFANT SCHOOL, (OFF) HIGH STREET, STUDLEY, B80 7HJ.

And give you a warm invitation to our Bible Talks,
held at 1.30pm every Sunday Afternoon, God willing.

Future topics include:

Date	Subject
7th June	Is the Bible true?
28th June	Peace for our time.
5th July	Have Faith in God.
26th July	The World of the future.
2nd August	The Importance of Baptism.
9th August	Do we need the Old Testament?
16th August	What the Bible says about you.

Christadelphians (Brethren in Christ), are a body of individuals united by their belief in the Kingdom of God and the name of Jesus Christ. They do not claim to have received any new revelation, but rather hold that the Old and New Testament scriptures are sufficient to make a person 'wise unto salvation.' Affirming the divine authorship of the Bible, they reject any interpretation that fails to reconcile with all the testimonies contained in the Holy Scriptures. They believe in the personal, visible return of Jesus Christ to the earth, where He will establish His Father's Kingdom and reign in power and glory as King, throughout the entire world.

For further information, please visit: www.studleychristadelphians.org

Worth celebrating

BROMSGROVE and Redditch Re-Engage groups are celebrating a remarkable milestone this year, marking their 10th anniversary of bringing companionship, friendship and joy to older people across the local community.

Founded by Gill Talbot and Alan Wodzynski in June 2016, the groups were established to tackle loneliness and social isolation among people aged 75 and over.

Over the past decade, the groups have welcomed more than 50 guests, providing a warm and welcoming environment where older people can enjoy companionship, conversation and regular social activities.

Alan said: "Over the last ten years, we've had the privilege of watching friendships blossom and confidence grow.

"Seeing guests arrive feeling nervous and leave with smiles on their faces, new friends and something to look forward to each month has been incredibly rewarding.

"That's what Re-Engage is all about - bringing people together and ensuring no one feels alone."

To celebrate the group's 10th birthday, guests were transported back to the swinging 60s with a special themed tea party at Bentley Village Hall.

The day was filled with music, singing, dancing and plenty of smiles as guests reminisced and celebrated together.

Today, the groups are supported by volunteers Vicky Hadley and Gail Stone, who continue the work started by Gill and Alan.



Vicky said: "These monthly tea parties mean so much to our guests and, for many, they are the highlight of their month.

"Seeing the friendships and connections that have developed over the years is incredibly rewarding."

However, the future of the groups relies on the support of local volunteers and businesses.

Vicky added: "We urgently need more volunteer hosts and drivers to help us continue providing these gatherings.

"Without volunteers, we simply can't reach as many older people who could benefit from the companionship and support Re-Engage offers."

Anyone interested in volunteering can email bromsgroveandredditchreengage@gmail.com for more information.

Some of the volunteers celebrate the 10th anniversary.

THE BOATHOUSE AT ARROW VALLEY VISITOR CENTRE



PADDLEBOARDS



SPORTS PEDALOS



KAYAKS



ROWING BOATS



SWAN PEDALOS



PLUS

DOGS WELCOME ON OUR SWAN PEDALOS & ROWING BOATS

WATER ACTIVITIES
PEAK SEASON (SCHOOL HOLIDAYS)
MON - SAT 11:30PM TO 7:30PM
SUNDAYS 11PM TO 7:30PM
OFF PEAK SEASON (TERM-TIME)
FRI - SAT 11:30PM TO 7:30PM
SUNDAYS 11PM TO 7:30PM

FREE
WETSUIT HIRE FOR KAYAK & PADDLEBOARD SESSIONS THROUGHOUT JUNE!

SCAN HERE AND MAKE A DAY OF IT!



ARROWVALLEY.CO.UK

arrowvalley.co.uk
BATTENS DRIVE, REDDITCH, B98 0LJ



RUBICON LEISURE



ARROW VALLEY VISITOR CENTRE

Kevin Oakes is hoping people will flock to the new parkrun at Cofton Park. 2426007MMR



Get in the running...

A NEW parkrun is set to be launched in Cofton Park in the coming weeks.

The weekly meets, which will take place at 9am every Saturday, are being introduced by running enthusiast Kevin Oakes.

He began running at the age of 17 when he was diagnosed with Type 1 diabetes.

Running helped him control his blood sugar levels and with his mental health crisis at that point.

In 2016, Kevin started the Great Birmingham Saturday morning runs at Ley Hill Park in Northfield and chip timing was introduced.

He also started the South Birmingham Striders running club in 2023 which has also gone from strength-to-strength and grown in numbers.

The Striders meet on Thursday nights at 6.30pm in Herbert's Yard and on the Ryland Centre Running Track in Bromsgrove at the same time on Monday nights.

Kevin told the Standard: "I wanted to help get people running and stay fit and healthy."

"And running can help people with addictions, general health and mental health."

"I also wanted to do something to help

with the regeneration of Longbridge at the same time.

"When MG Rover went, the area lost a lot and has been recovering ever since."

"I thought getting a parkrun would be a great way of doing it."

With £4,000 needed to fund a parkrun, a GoFundMe page was set up to generate the cash needed and Kevin applied to the organisers and obtained the landowner's permission.

Now the event needs support and volunteers to make it a success.

Kevin hopes, provided everything is finalised in time by the parkrun organisers, the first Cofton Park event will be on July 4.

In the coming weeks there will be social media pages and a web page launched for the new Cofton Park parkrun.

But in the meantime, people can visit the South Birmingham Striders Facebook page for more information and further updates.

Worldwide, almost 450,000 people undertake parkruns each week and NHS GPs have even prescribed them to help with people's varying medical conditions.

HAMPTON FERRY CAR & BIKE SHOWS

Saturday 13th June 2026 and
Saturday 12th September 2026

Hampton Ferry, Boat Lane, Evesham,
Worcestershire, WR11 4BP

11am-4pm

Admission to the show is free for
exhibitors and spectators.

Spectators car parking £3 all day

www.hamptonferry.com

Direct Floors
Home service

Carpets | Vinyls | Laminates | Wood

Shop at home for your new carpet and flooring and receive up to 30% off shop prices. We are COVID SAFE with 1,000's to choose from with our mobile showroom!

- ◆ Mobile showroom to your home
- ◆ 1000's Samples to your door
- ◆ Fully qualified insured fitters
- ◆ Family run business since 1999
- ◆ Furniture moved & carpets uplifted for OAP'S & disabled free of charge

Find us on
facebook

Happy to help!

Call 7 days a week 8am-9pm
01527-894777
www.direct-floors.co.uk

Image: Worcestershire County Council. s



Record numbers for Wythall family event



From left: Lucy Hellingsworth, Katy McGonigal and Malinowska Dominika were the top three in the women's 5k. Picture by: Tristan Harris. Copyright Bullivant Media Group Ltd.



Joseph Hook won the men's 5k, with Lee Neal and Stephen Pearson in second and third, respectively. Picture by Tristan Harris. Copyright Bullivant Media Group Ltd.

by **Tristan Harris**
tristan.harris@bullivantmedia.com

MORE THAN 500 runners completed this year's Wythall and Hollywood Fun Run.

The 5k and 10k runs started and finished in Wythall Park, where the 'families on track' event is also held.

The latter event had a record year with more families than ever taking part.

The Wythall and Hollywood Fun Run is organised by Wythall Community Association with Worcestershire County Council and Events of the North.

The run is backed by Olympic medalist Steve Cram CBE.

The men's 5k was won by Joseph Hook from, Knowle and Dorridge Running Club. He finished in a time of 17mins, 1.45secs. Second was Lee Neal, from Bromsgrove and Redditch Athletics Club; and third was Stephen Pearson, from the South Birmingham Striders.

In the women's events, Lucy Hellingsworth, from Belbroughton, won the 5k for the second time in a row, completing the course in 18mins, 44.43secs. The 17-year-old is a member of Halesowen Athletics Club.

Second was Katy McGonigal, from Bournville Harriers; and in third was Malinowska Dominika,

from Birmingham Running, Athletics and Triathlon Club (BRAT).

Lucy, who started running in 2020 during the Covid lockdowns, said she was delighted to win the race again.

"I like 5k as a distance to run and I really like this course," said the victor, "there's a few gradients which makes it challenging."

In the men's 10k, Steve Dunsby, from BRAT, came first with 34mins, 37.87secs. In second was Matthew Herbett, from Bournville Harriers; and Dan Dalmedo, also from BRAT, was third.

In the women's 10k, Nicola Sykes, from Bournville Harriers, won the race in a time of 39mins,

15.37secs. The runner-up was Lauren Sykes, from Bromsgrove and Redditch Athletics Club; and Sarah Horton, also from Bournville Harriers, finished third.

The event had plenty of entertainment for runners and supporters to enjoy including a barbecue, bouncy castles, food stalls, ice cream and a licensed bar.

People could also try a range of sports including tennis, bowls and archery.

Mark Stinton, chair of the Wythall Community Association, thanked everyone who gave their time to make the event possible adding, the association is proud of what the event has become.

"This fun run shows our commu-

nity at its best, bringing together people of all ages and abilities," said Mark. "It's a great celebration of what makes Wythall and Hollywood so special."

Lisa McNally, director of public health in Worcestershire, said: "Each year, this event just gets better and better."

"Whether runners ran for time or just for fun, the achievement was simply taking part and everyone involved did fantastic."

Visit wythallhollywoodfunrun.org.uk for more pictures of the day and information about next year's run, which will take place on June 13.

■ Turn to pages 16, 17 and 18 for the full results.

BOX OFFICE: BUY ONLINE, IN PERSON OR CALL 01527 361 324 // ARTRIXBROMSGROVE.CO.UK

BOX OFFICE OPENING HOURS:
MONDAYS - 10:00-12:00 & 18:00-20:00
TUESDAYS-THURSDAYS: 10:00-12:00
FRIDAYS: 12:00-14:00
SATURDAYS - 1000-1200
(CLOSED BANK HOLIDAYS)

FOR MORE INFO ON SHOWS AND CLASSES PLEASE VISIT ARTRIXBROMSGROVE.CO.UK

SELLOUT SHOWS HEADING TO ARTRIX



A HAIR-RAISING PANTOMIME FOR THE WHOLE FAMILY

Rapunzel

THE TANGLED PANTOMIME

TICKETS ON-SALE NOW
4TH -30TH DECEMBER 2026

ARTRIX

SPONSORED BY PERONI NASTRO AZZURRO LWC

PRODUCED BY HALFTAIL PRODUCTIONS



**TRANSFORM YOUR EXISTING
CONSERVATORY INTO A LIVING SPACE
YOU CAN USE ALL YEAR ROUND**



CONSERVATORY ROOF REPLACEMENT

Every Ensign conservatory roof is bespoke. Accurately surveyed & precision built in our own factory.

- Large range of lightweight tile colours
- U-value up to 0.12, this is better than current building regulations
- Keylite roof windows
- Electrics & plaster finish

CONSERVATORY AND ORANGERY EXTENSIONS

- Cost effective extensions
- Large range of designs
- LABC approval undertaken
- Average build time 4 weeks

REPLACEMENT WINDOWS AND DOORS

- Aluminium bi-fold doors
- Composite doors
- Linar window and door systems
- Planitherm Technology sealed units for maximum efficiency
- High security PAS 24 locking systems



CALL TODAY TO BOOK YOUR FREE
NO OBLIGATION SITE SURVEY

01527 69296

www.ensignroof.co.uk

Scan to read our reviews



**Trade enquiries welcome
Supply only options
Installers always required**

SUPERVALUE FURNITURE & BED CENTRE COMFORT YOU CAN TRUST

Your Local Family-Run Retailer for Over 35 Years

Who Are We?

- OVER 35 YEARS OF LOCAL SERVICE** - Caring for Droitwich homes with comfort, quality, and a personal touch
- COMMITTED TO "COMFORT FOR EVERY CUSTOMER"** - Supportive, stylish, and affordable mobility furniture from trusted British brands.
- FAMILY-RUN, FRIENDLY ADVICE** - Guiding you to the perfect Rise & Recline Chair or Adjustable Bed for your home.
- MORE THAN FURNITURE** - helping make life at home easier, more comfortable, and more enjoyable for you and your loved ones.

HOME VISITS AVAILABLE, CALL STORE TO ARRANGE



Riser Recliner Chairs

- Enjoy comfort, support, and style with our wide range of quality recliner chairs and matching sofas.
- Choose from a huge selection of fabrics, leathers, and colours
 - Find sizes to suit your home and personal comfort
 - Take advantage of excellent Pre- and After-Sales Service
 - Enjoy discounted prices & VAT exemption available

FREE ARMCAPS



Adjustable Beds

- Experience effortless comfort and independence with our range of adjustable beds - designed for quality sleep and everyday ease.
- Simple, one-touch control
 - Available in Single, Double, and Dual models
 - Fantastic fabric and headboard options
 - Discounted prices & VAT exemption available



Why Choose Us?

- ✓ FAMILY RUN FOR OVER 35 YEARS
- ✓ FRIENDLY, PERSONAL SERVICES
- ✓ TRUSTED & RELIABLE
- ✓ FAST LOCAL DELIVERY
- ✓ TRUSTED BRITISH BRANDS
- ✓ HOME VISITS AVAILABLE

"Another Great Experience - Fantastic Service starting in the Showroom, right through to delivery and installation. Five Star Service! Fantastic Products!"
(L.H. Sept 2025)



"Fabulous Products. Lovely and Helpful Staff and Good prices - what more could you ask for!"
(CB August 2025)



"First Class Service again. Very reasonable prices for good quality furniture. Quick delivery. Very Helpful and Friendly Staff. Highly Recommend them!"
(MQ July 2025)



VISIT OUR DROITWICH SHOWROOM – OPEN 7 DAYS A WEEK

21-29 HIGH STREET, DROITWICH, WR9 8EJ

01905 796 507 Info@svfonline.co.uk



Free parking Free Local Delivery Free Installation Disposal Available

SUPERVALUE FURNITURE & BED CENTRE QUALITY BRANDS FOR LESS

Your Local Family-Run Retailer for Over 35 Years



VISIT OUR DROITWICH SHOWROOM OPEN 7 DAYS A WEEK

📍 21-29 HIGH STREET, DROITWICH, WR9 8EJ
☎ 01905 796 507 ✉ Info@svfonline.co.uk



WHY CHOOSE US ?



FREE LOCAL DELIVERY
FREE INSTALLATION
DISPOSAL AVAILABLE

FURNITURE DISPLAYED OVER SIX FLOORS
FRIENDLY STAFF WITH EXPERT KNOWLEDGE
Google 5 ★★★★★ GOOGLE REVIEWS

Dalishbakes & Gallery

At the Barnyard Café



Special offer 1
Afternoon tea for 2
£35
(usual price - £39.00)

Special offer 2
Try any one of our new
'summer salads'
for £8.50

Special offer 3
Buy one & get one 1/2 price
on any of our sweet treats

Opening Times:
Monday: CLOSED
Tuesday to Saturday: 8am - 4pm
Sunday (breakfast only) 9am - 1pm

**If you happen to be over 65
then Tuesdays are our 10% off
the entire menu, VIP days!**

Find us on Facebook & Insta @dalishbakes - The Barns Village, Hewell Lane, Tardebigge
01527 336998 - booking is advisable



Breakfast
Served until 10pm Tuesday to Saturday
The Barnyard - £11.50
A sausage & bacon, free range egg, 2 slices of toast, baked beans, mushrooms & a slice of toast (total)
The Baby Barnyard - £8.50
A slice of sausage, free range egg, mushrooms, lettuce & tomato (total)
Brische stack - £10.00
A sausage, 2 slices of brisched toast, 2 soft brewed & an egg - served and to taste with ketchup and American mustard
Beconor sausage sandwich (gf) - £6.50
Soft bread, 2 slices of sausage, soft brewed, lettuce & tomato
On toast (GF) - £6.50
Soft bread, 2 slices of sausage, soft brewed, lettuce & tomato
The big Vegi breakfast - £10.00
A veg sausage, free range free egg, 2 hash browns, lettuce, mushrooms & 2 slices of toast (total)
Toasted teacake with butter - £2.95
Toasted teacake with butter - £2.95 add jam £3.45
Vegan sausage sandwich - £6.50
A hash brown, mushrooms, 2 veggie sausages, 2 slices of vegetable cake, ketchup & ketchup mustard
Fluffy pancakes
with blueberries & maple syrup (1, 2, 3, 4, 5, 6, 7, 8, 9, 10, 11, 12, 13, 14, 15, 16, 17, 18, 19, 20, 21, 22, 23, 24, 25, 26, 27, 28, 29, 30, 31, 32, 33, 34, 35, 36, 37, 38, 39, 40, 41, 42, 43, 44, 45, 46, 47, 48, 49, 50, 51, 52, 53, 54, 55, 56, 57, 58, 59, 60, 61, 62, 63, 64, 65, 66, 67, 68, 69, 70, 71, 72, 73, 74, 75, 76, 77, 78, 79, 80, 81, 82, 83, 84, 85, 86, 87, 88, 89, 90, 91, 92, 93, 94, 95, 96, 97, 98, 99, 100)

Dalishbakes
Lunch served from 12pm-3pm - Tuesday to Saturday
Summery sourdough...
Gömmen roast Ham, egg & chps (GF) - £12.50
Quiche, chips & dressed salad - £13.50
Homemade Sausage roll with salad - £7.50
The summer salads - £10.50
CRISP salad dressings...
Spicy chicken salad...
SOUP 3 ways...
Simply sandwiches...
Tasty toasties...
Fancy a sweet treat...
Affogato - £5.50
Banana biscoff boat - £8.50
Chocolate fudge brownie - £6.50
Summer sandwiches - £7.50



Mastering conditions to land the top spot

A COMMANDING performance by top helm Josh Beardshaw saw him clinch top spot at the inaugural Paul Fuller Memorial Regatta at Redditch Sailing Club.

The event, held over two days at Arrow Valley Lake, saw both juniors and grizzled old sea dogs - and all ages in between - compete against each other over five demanding races with four to count.

The expected high winds of Saturday failed to materialise and instead all competitors were put to the test sailing in the lightest of conditions.

However the breeze returned on Sunday morning - Force 4 gusting up to Force 6 - sparking lots of thrills, spills and capsizes to keep the rescue boat teams busy.

Club commodore Karen Beston said: "What a terrific weekend of sailing we have had."

"We saw 17 boats battling it out on the Saturday and 20 on Sunday with juniors from as young as nine competing against adults as old as 80!"

"They are the future of our club and I think everyone thoroughly enjoyed themselves."

Paul Fuller was a much-loved member of the Redditch and Studley communities and a key figure at Redditch Sailing Club who tragically died last year.

The event was sponsored by Chris Martin of Birmingham-based Dinghy Tech and the courses were set by race officers Martin Smith and Andy Beardshaw.

Meanwhile the galley crew, marshalled by Pat Lloyd, ensured everyone was well fed and watered.



Results: 1st Josh Beardshaw, 2nd Greg Croydon, 3rd James Dawes, first junior: Ollie, first junior crew Arlo.

Redditch Sailing Club holds regularly training programmes through the Royal Yachting Association teaching people how to sail.

For more information visit: www.redditchsc.co.uk/

Last year's commodore Roger Harrison at the helm of his Comet dinghy.

just go.holidays

Reader travel



André Rieu Live in Liverpool

Departing Sat 12 Sep '26

The classical-music phenomenon André Rieu returns to the UK with a sensational new show, including a date at Liverpool's M&S Bank Arena! Accompanied by his 60-piece Johann Strauss Orchestra, this evening promises to be filled with thrilling music.

So much included...

- Return coach travel from Bromsgrove
- Overnight stay at a selected hotel (JG3 or JG4 rating) with breakfast
- Ticket to André Rieu concert at the M&S Bank Arena, Liverpool (Rank 4)
- Return coach transfers from the hotel to the M&S Bank Arena
- En-route visit to a place of interest



Beetlejuice The Musical

Matinee Show & London

Departing Sat 19 Sep '26

Let's turn on the juice and see what shakes loose! Beetlejuice The Musical hits London's West End with wicked humour, wild effects and the ghost with the most, babe! Fresh from Broadway, this spooky smash is the must-see bio-exorcism of 2026!

So much included...

- Return coach travel from Redditch, Bromsgrove
- Overnight stay at a selected hotel (JG3 or JG4 rating) outside London with full English breakfast
- Grand Circle ticket (matinee performance)
- Free time in London for shopping & sightseeing of 2026!

Ticket upgrades available

Call 03332 342 514

Quote OSG

Visit justgoholidays.com/OSG



Subject to T&Cs. Coach holidays BCh/ABTOT protected, air holidays ATOL protected 10889. Prices per person (2 sharing), subject to availability. Pick up locations, airport selection and room supplements may apply. Prices correct at print, valid 7 days. See website for details.



ArcelorMittal Building Solutions UK

Your metal cladding partner

Over production panels can be cut to your exact required lengths.

We offer full **custom production** for requirements not covered by stock range.

Share your project's needs today and we'll respond with a **fast, competitive quotation.**

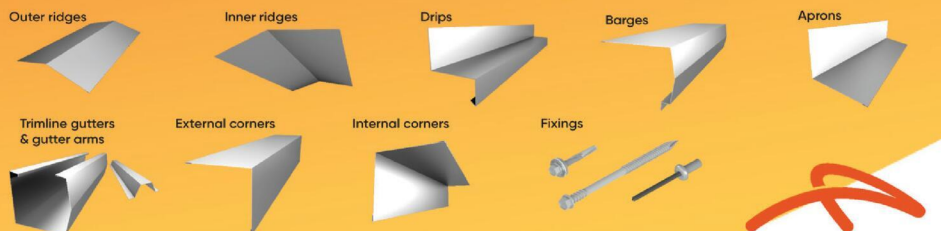
Upgrade your project

Composite fire-proof panels from just **£20/m² + VAT**

Available ex-works Birmingham



Complete your project with bespoke **flashings and accessories**



03330 527 725

info.uk@arcelormittal.com

Manufactured in the UK

ArcelorMittal

Events for all as Festival starts



THIS YEAR'S Bromsgrove Festival gets under way next Friday, June 19, with almost 70 events across the district in just over four weeks.

Friday, June 19

The first event at 6.30pm will be **Zimbe!** at Routh Hall, Bromsgrove School. Barnt Green Choral will be joined by two school choirs - 130 singers in total. The performance of **Zimbe!** by Alexander L'Estrange will give attendees the chance to 'sing the song of Africa'. Tickets, available from bromsgrove-school.co.uk/boxoffice or by calling 01527 579679 ext 616 for tickets, are £12.50. Visit: barntgeenchoral.org for more.

At 8pm, **You Should Be Dancing** - The Bee Gees Songbook will take centre stage at Bromsgrove's Artrix. The show will take viewers through the band's impressive back catalogue. Tickets, at £22.50 plus booking fee, are available at artrix-bromsgrove.co.uk or by calling the box office on 01527 361324.

Saturday, June 20

The official Bromsgrove Festival

Launch on Bromsgrove High Street from 12.30pm to 4.30pm offers a free fun-filled afternoon of entertainment and creativity for everyone to enjoy. Included will be singers, dancers and musicians performing near the Housman Statue, along with 'Fancy a Tinkle'. There, people can have a go on the electric keyboard in the High Street (outside Verraco Lounge) to entertain shoppers. Visit the Bromsgrove Festival website for more.

Also on Saturday is the annual Bromsgrove Court Leet Fair Day and Street Market. The colourful traditional procession will journey to the Housman Statue where, at 11am, Bailiff Robert Spittle will proclaim the charter. It marks the day in 1199 when King John granted Bromsgrove permission to hold a fair and market. As well as the assizes, local crafters, schools and charities will have market stalls whilst dressed in traditional costume. The event is free. Visit: bromsgrove-courtleet.co.uk or facebook.com/CourtLeetBromsgrove for more.

A Summer Family Fun Day takes place from 1pm to 4pm at Bromsgrove Youth and Community Hub, Market Street, featuring fun activities including music, games, food, arts and crafts, face painting and more. Tickets are £3 per person, available from thehubbromsgrove.org or via Eventbrite. Alternatively, email: info@thehubbromsgrove.org for more.

The annual Guild of Silk Painters' display gets under way at Rubery



The Bromsgrove Festival is set to get under way and there will be plenty on offer, including loads at the launch next Saturday. s

Library on Saturday and runs until July 18. The collection of work undertaken by members of the local branch of the guild is free to view from 8am to 8pm everyday (excluding Sundays). Email: Kay Morris at kaymo@talktalk.net for more.

An Art Show and Exhibition

runs at the Avoncroft Arts Centre, Redditch Road, from 10am to 4pm, showcasing arts, crafts and ceramics. All the work has been created by Avoncroft Arts Society artists. There will be free workshops on offer and the enamelling studio will be open for visitors to see the variety of techniques and styles

Christine uses to make jewellery. Visit: avoncroftarts.org.uk for more on the event and: enamelledjewellery.co.uk for further details on the enamelling studio.

St Chad's Craft Fair takes place from 10am to 2pm at St Chad's Church in Rubery, boasting stalls full of handmade items made by local crafters and home-made cakes. The event is free. Visit: stchadsrubery.org for more.

An free Open Day Party takes place at Aston Fields Social Club, Stoke Road, from 2pm to 8pm. There will be six hours of live music with Skabucks headlining, plenty of dancing and a bouncy castle. Visit: astonfieldssc.co.uk for more.

A charity concert performed by the Beauchamp Chamber Orchestra will be held from 7pm to 8.30pm at Avoncroft Museum. The programme of the much-loved Fantasia on a theme of Thomas Tallis and works by Vaughan Williams, Ireland Britten and others will be on the programme. Go to: avoncroft.org.uk for further details and tickets which are £25 (£15 for under 18s).

Sunday, June 21

Stourport Brass Band will take centre stage at the Sanders Park Jubilee Bandstand. It is part of Bromsgrove District Council's free 'Bands in the Park' series at 2.30pm every Sunday until September.

Visit bromsgrovefestival.co.uk for more on these and forthcoming events.



Lunchtime Specials and Under 60s Menu £10.25

Tuesday to Saturday
12 noon to 5pm

Golden Oldies Only £9.75

Golden Oldies also available
Tuesday to Saturday
12 noon - 5pm

Mid Week Roast on a Thursday £12.25

3 course Sunday Lunch £19.25 - Sunday 12 noon - 4pm

Full Main Menu Tuesday - Saturday 12 noon - 9pm, Sunday 12 noon - 4pm

Evesham Road, Astwood Bank, B96 6AX Tel: 01527 894213

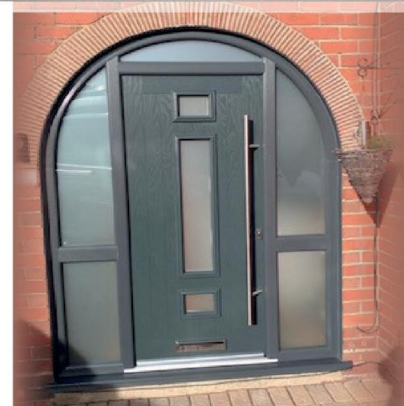
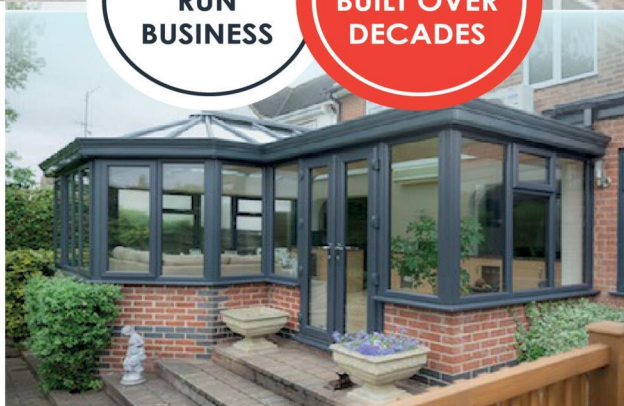


BIRMINGHAM GLASS SERVICES LTD



**FAMILY
RUN
BUSINESS**

**EXPERTISE
BUILT OVER
DECADES**



WE MANUFACTURE & INSTALL

- Flush Casement Windows ***NEW***
- Composite doors
- **Windows:** UPVC casement, bow, bay & shaped
- **Doors:** UPVC sliding, French, bi-fold, patio, aluminium
- Secondary and triple glazing
- Conservatories and bespoke orangeries
- Soffits, fascias and guttering
- Skypods and roof lanterns
- Aluminium windows and doors

WE ALSO PROVIDE A FULL GLAZING SERVICE!

- ✓ Replacements of broken or misted units
- ✓ Window & door repairs
- ✓ Mirrors & glass cut to size
- ✓ In-house trade counter

CALL TODAY FOR A FREE QUOTATION

TEL: 0121 4779799

www.birminghamglass.co.uk | enquiries@birminghamglass.co.uk

5k results



Female results

- 1 Lucy Hellingsworth 18:44.443
- 2 Katy Mcgonigal 19:52.123
- 3 Dominika Malinowska 21:12.760
- 4 Isabelle Grace Mccann 21:24.523
- 5 Imogen Faith Mccann 22:02.473
- 6 Charlotte Baker 22:53.323
- 7 Elle Cottle 23:38.533
- 8 Nicky Beasley 24:02.683
- 9 Jo Halling 25:08.593
- 10 Annabelle Waters 25:59.383
- 11 Sukhy Hogwood 25:56.953
- 12 Emma Mcleod 26:57.733
- 13 Anna Mcmanus 26:11.503
- 14 Ellie Dunn 27:15.793
- 15 Joanne Cottle 27:06.163
- 16 Linda Linda 27:23.113
- 17 Grace Griffin 27:52.573
- 18 Liz Bird 28:23.833
- 19 Elizabeth Clay 28:20.953
- 20 Ellie Wyles 29:14.100
- 21 Lucy Moseley 28:12.523
- 22 Sharon Newman 28:56.173
- 23 Emily Astle 30:06.403
- 24 Wendy-Jane Darling 29:23.503
- 25 Carina Kelly 29:56.533
- 26 Esmee Grant 29:58.123
- 27 Isla Healy 29:13.753
- 28 Annie Lees 30:42.853
- 29 Miriam Blyth 30:04.373
- 30 Clare Pybus 30:33.193
- 31 Paula Pitcher 30:19.633
- 32 Chloe Ridewood 31:00.167
- 33 Sam Walsh 30:14.893
- 34 Lisa Lester 31:19.363
- 35 Alexandra Caldicott 31:31.783
- 36 Deb Knight 32:09.343
- 37 Lynsey Lacey 32:16.543
- 38 Candice Nolan 31:19.483
- 39 Charlotte Brotherhood 31:58.033
- 40 Natalie Priest 32:48.073
- 41 Suz West 32:17.503
- 42Ash Osborne 32:51.913
- 43Madie Osborne 32:51.733

- 44Bethany Bradford 32:35.323
- 45 Beckie Grant 32:57.193
- 46 Tina Lupoli 33:23.357
- 47 Georgina Butler 33:00.253
- 48 Jessica Notley 33:42.133
- 49 Rebecca Haddon 32:45.493
- 50 Danielle Rodgers 33:27.973
- 51 Piper Ococonnor 32:39.703
- 52 Kathryn Healy 32:58.003
- 53 Laura Mulcahy 33:44.953
- 54 Jenny Such 33:46.513
- 55 Katie Meredith 34:07.307
- 56 Anne-Louise Henderson 33:52.723
- 57 Nadene Bryan 34:31.993
- 58 Donna Wright 34:22.180
- 59 Diana Bridgman 34:49.170
- 60 Rachel Whitehouse 34:51.913
- 61 Donna Osullivan 34:21.493
- 62 Bethan Rees 34:21.823
- 63 Deborah Downey 34:29.233
- 64 Jo Godman 34:28.933
- 65 Hayley Woolaway 34:52.483
- 66 Joanne Martin 35:40.093
- 67 Jessica Harvey 35:52.693
- 68 Tasha Looney 35:43.573
- 69 Charlie Wainwright 35:44.473
- 70 Zoe Oliver 35:58.963
- 71 Erin Brotherhood 36:19.873
- 72 Hannah Walters 36:47.893
- 73 Nicola Dudek 37:12.823
- 74 Sophie Galea 37:36.583
- 75 Rosalyn Chalk 37:08.083
- 76 Nikki Pham 37:19.963
- 77 Astrid Horton 37:28.843
- 78 Lotti Willan 37:29.353
- 79 Mila O'connor 37:08.803
- 80 Neve Woolaway 37:09.433
- 81 Amy Galea 38:18.523
- 82 OliviaYoung 38:13.633
- 83 Melissa Pendry 39:31.813
- 84 SarahWhitehead 40:21.403
- 85 AlanaWells 39:40.153
- 86 Nancy Mcglynn 39:18.553
- 87 Kay Norris 40:35.143

- 88 Amelie Armstrong 39:45.133
- 89 SarahPowers 40:13.573
- 90 Lisa McNally 41:21.253
- 91 Isla McMahon 41:55.363
- 92 Sophie Doyle 40:57.720
- 93 Jessie Doyle 41:00.433
- 94 Roxy Almond 42:26.113
- 95 DianePalmer 41:43.993
- 96 Phillipa Stokes 41:45.673
- 97 Megan Green 42:56.563
- 98 Ruby Walker 42:56.713
- 99 Lindsey Tyler 42:22.233
- 100 Clare Pickersgill 42:22.423
- 101 Mandy Jones 43:32.893
- 102 Amy Beard 45:32.803
- 103 Jennifer Hallett 45:29.113
- 104 Chloe Johnston 45:32.443
- 105 EllieMartin 46:02.053

Male results

- 1 Joseph Hook 17:01.453
- 2 Lee Neal 17:09.643
- 3 Steve Pearson 17:09.913
- 4 Cian Whelan 17:28.933
- 5 Michael Link 17:28.710
- 6 Charlie Costello 18:08.443
- 7 Jonathan Mould 19:05.383
- 8 Nathan Watkins 19:31.123
- 9 Akif Malik 19:48.493
- 10 Chris Hartley 19:50.443
- 11 Shay Foyle 19:53.563
- 12 Evan Carvill 20:10.183
- 13 Adrian Fowler 20:21.733
- 14 Ian Price 20:50.503
- 15 Richard Blyth 20:41.923
- 16 Ron Cattle 21:35.203
- 17 Steve Morton 21:41.443
- 18 Steve Rynne 22:04.603
- 19 Dafydd Lampard 22:09.070
- 20 Joshua Cooper 23:01.873
- 21 Anthony Ho 23:17.563
- 22 Jasper Blyth 23:12.463
- 23 Arthur Blanch 23:50.130
- 24 Sam Ferran 24:25.200

- 25 Matt Knight 24:34.963
- 26 Fred Bird 24:49.663
- 27 Freddie Lambert 25:05.323
- 28 Tom Owens 24:11.323
- 29 Rohan Kimball 24:51.283
- 30 Alex Blyth 25:04.320
- 31 Michael McDermott 25:29.143
- 32 Charlie Galea 26:23.653
- 33 Matt Galea 26:23.713
- 34 James Westwood 27:00.343
- 35 Ben Skelton 27:07.243
- 36 Robert Saunders 27:14.113
- 37 John Pitcher 26:29.653
- 38 Zerir Cooper 27:05.477
- 39 Ethan Stanley 27:21.313
- 40 Charlie Bridge 27:24.673
- 41 Lee Thompson 27:24.643
- 42 Will Cund 26:38.083
- 43 Joseph Brotherhood 26:41.623
- 44 Callum Cornfield 27:35.023
- 45 Greg Hogg 27:48.160
- 46 Jacob Blyth 27:29.430
- 47 Luke Griffin 27:52.183
- 48 Steven Morgan 28:01.870
- 49 JasonHogg 28:12.073
- 50 Tristan Harris 28:17.083
- 51 Curtis Pettet 27:28.663
- 52 Ted Westwood 28:53.053
- 53 Richard Harris 28:38.713
- 54 George Newlands 28:49.020
- 55 Craig Kavanagh 27:53.593
- 56 Ethan Davis 29:25.063
- 57 Bowie Blyth 28:43.780
- 58 Jon Blyth 28:46.243
- 59 Nathan Mills 28:46.933
- 60 Gareth Bownes 29:11.473
- 61 AdamBownes 29:11.323
- 62 Daniel Parkinson 29:31.183
- 63 Tim Hunt 29:24.677
- 64 Steve Devlin 29:53.653
- 65 Richard Cottle 29:42.793
- 66 Laurence Healy 29:13.843
- 67 PhilipPearce 30:19.783
- 68 Luke Whitehouse 30:17.813
- 69 John Cheel 30:36.913

- 70 Adrian Smart 31:32.653
- 71 Nick Pettet 30:31.213
- 72 Arturo Lupoli 31:54.073
- 73 Mike Bird 31:23.323
- 74 James Bradford 32:35.683
- 75 Simon Parker 33:28.037
- 76 Gavin Jackson 32:50.893
- 77 Ted Newlands 33:53.533
- 78 James Ococonnor 32:45.373
- 79 George Archer 35:13.993
- 80 LewisPendry 35:06.343
- 81 Finley McMahon 35:28.543
- 82 Mark Sinclair 34:08.473
- 83 Mark Weston 35:04.753
- 84 Noah Woolaway 34:49.147
- 85 Simon Parkinson 35:13.723
- 86 Lee Brotherhood 36:20.987
- 87 James Rose 37:54.823
- 88 James Lawley 37:04.453
- 89 Barrie Roberts 38:18.703
- 90 Simon Chalk 37:07.333
- 91 Thomas Rose 38:21.103
- 92 Craig Woolaway 37:16.423
- 93 Andrew Young 38:12.313
- 94 Richard Bell 38:58.093
- 95 Paul Meglynn 39:19.903
- 96 Pescaru Daniel 43:07.783
- 97 Joseph Ambrose 50:19.663



OFTEN IMITATED BUT NEVER EQUALLED

While all costs are going up - OURS ARE STAYING DOWN

Due to our customer friendly services of No Door Salesmen, No Showroom and little overheads



NEW FLUSH WINDOWS

BEAUTIFUL COMPOSITE DOORS
Fully fitted
Competitive Prices



UPTO 30% OFF ALL WINDOWS



ALL PRODUCTS HAVE A 10 YEAR INSURANCE BACKED WARRANTY

BILL MOORE'S WINDOWS AND DOORS
A NAME YOU CAN TRUST

1 Brookside Close, Stratford-upon-Avon, Warwickshire CV37 9PL

01789 415171 • 07729 689239 • www.billmooreswindowsanddoors.co.uk

10k results



Female results

- 1 Nicola Sykes 39:15.373
- 2 Lauren Sykes 41:12.043
- 3 Sophie Groom 42:14.850
- 4 Sarah Horton 42:48.463
- 5 Sophie Doran 45:35.023
- 6 Caroline Park 45:47.833
- 7 Millie Flynn 47:23.113
- 8 Sam Yair 47:36.673
- 9 Tammy Price 48:19.980
- 10 Georgia Bough 48:47.023
- 11 Joanna Cousins 49:04.963
- 12 Samantha Kelly 49:29.833
- 13 Mia Browne 50:13.770
- 14 Elise Orbell 49:39.810
- 15 Kirstie Parker 50:46.903
- 16 Steph Hosier 51:51.703
- 17 Dawn Leedham 52:36.373
- 18 Nicola Barratt 52:40.620
- 19 Tina Millward 53:06.793
- 20 Vicki Hulme 53:43.933
- 21 Judy Appleby 53:26.790
- 22 Claire Johnson 54:07.903

- 23 Philippa Bligh 53:52.933
- 24 Medb Kilbey 54:30.253
- 25 Sally Pritchard 54:28.513
- 26 Ella Strutt 54:57.943
- 27 Rhiannon Eling 54:14.023
- 28 Maria Maleady Butcher 54:26.623
- 29 Pauline Wright 54:54.763
- 30 Laura Ben Kahla 55:08.143
- 31 Carol Sykes 55:10.753
- 32 Lydia Robertson 55:20.833
- 33 Katie Homer 54:58.633
- 34 Janine Cherry 56:24.613
- 35 Rosie Hatton-Mills 55:26.413
- 36 Amelie Barnes 56:42.763
- 37 Lindsey Barnes 56:42.943
- 38 Vicki Parsons 56:19.393
- 39 Ella Bird 57:00.133
- 40 Jessica Mansell 57:05.803
- 41 Jaime Hobday 56:54.973
- 42 Juliette Green 57:18.433
- 43 Shelly Forrester-West 58:19.933
- 44 Caroline Garbutt 57:49.663

- 45 Natalie D'abreu 58:46.993
- 46 Hannah Kitson 58:42.523
- 47 Jill Higgs 58:27.433
- 48 Jacqui Taylor 58:07.153
- 49 Kath Newton 58:35.023
- 50 Eve Faulter 59:31.153
- 51 Marcia Thompson 59:11.803
- 52 Sophie Mcloughlin 59:30.930
- 53 Donna Burns 59:15.943
- 54 Debbie Cooper 59:49.513
- 55 Abbie Duckmanton 59:54.673
- 56 Julie Cooper 01:01:05.773
- 57 Alice Walker 01:00:30.553
- 58 Darcy Burnham 01:01:25.033
- 59 Kate Thompson 01:01:40.843
- 60 Joanne Thomas 01:02:08.713
- 61 Ruth Hickinbotham 01:02:36.373
- 62 Eleanor Avery 01:03:20.113
- 63 Bernie Mcglynn 01:02:46.393
- 64 Stef Cope 01:03:39.613
- 65 Jade Cross 01:03:14.953
- 66 Kerry Scott 01:03:08.233
- 67 Hope Ford 01:04:00.943
- 68 Philomena Williamson 01:03:47.683
- 69 Paige Hunt 01:04:26.353
- 70 Jessica Pinhorn 01:03:56.413
- 71 Holly Hudson 01:03:31.783
- 72 Jo Poyner 01:03:39.223
- 73 Victoria Geddes 01:04:26.143
- 74 Jane Astle 01:04:57.073
- 75 Samantha Heath 01:04:33.403
- 76 Joanne Lane 01:04:58.153
- 77 Louise Watkins 01:05:32.143
- 78 Laura Durose 01:05:45.403
- 79 Hollie Heffernan 01:05:58.363
- 80 Zoe Haste 01:06:57.073
- 81 Rebekah Haste 01:06:57.163
- 82 Jayne Franklin 01:06:20.413
- 83 Hayley Giles 01:06:46.603
- 84 Grace Brayne 01:06:52.033
- 85 Annika Jones 01:06:51.613
- 86 Lyndsey Broxton 01:07:01.363
- 87 Hannah Cox 01:06:36.703
- 88 Wendy Gordon 01:06:54.283

- 89 Caroline Slater 01:07:50.233
- 90 Sophie Lakner 01:07:36.250
- 91 May Davis 01:08:55.993
- 92 Chloe Couture 01:08:42.343
- 93 Layla Rogers 01:07:48.553
- 94 Joanne Boden 01:08:42.793
- 95 Abigail Entwistle 01:08:30.103
- 96 Rebecca Thompson 01:09:11.833
- 97 Julie Price 01:09:29.113
- 98 Clare Hinds 01:08:52.153
- 99 Charlotte Wilde 01:09:16.693
- 100 Katrina Mccrory 01:10:05.503
- 101 Emilia Felton 01:09:56.293
- 102 Hannah Luker 01:09:20.173
- 103 Laura Dingley 01:09:20.323
- 104 Fay Robinson 01:10:08.323
- 105 Penny Leach 01:10:30.313
- 106 Lucy Smallwood 01:11:13.770
- 107 Sarah Tullett 01:10:54.163
- 108 Joanne Aucott 01:10:26.353
- 109 Ceri Armstrong 01:10:35.863
- 110 Erin Rose-Andrews 01:10:46.993
- 111 Vickie Francis 01:11:40.183
- 112 Isabelle Stevenson 01:12:36.283
- 113 Nat Leddy 01:12:49.993
- 114 Lauren Bayliss 01:13:00.793
- 115 Bianca Thomas 01:13:14.563
- 116 Kelly Chambers 01:13:35.983
- 117 Lizzy Coughlan 01:14:35.293
- 118 Marie-Claire Whittaker 01:15:13.483
- 119 Emma Henning 01:15:21.283
- 120 Ellie Rose 01:15:41.293
- 121 Janet Bright 01:18:31.813
- 122 Marie Tyrrell 01:18:54.913
- 123 Alison Maycroft 01:18:54.613
- 124 Imogen Charles 01:21:37.093
- 125 Clare Falkner 01:22:11.053
- 126 Natalie Yardley 01:22:11.623
- 127 Emma Wharton 01:24:02.983
- 128 Claire Lane 01:25:03.463
- 129 Debbie Hasan 01:28:06.943
- 130 Demi Greenhouse

Male results

- 1 Steve Dunsby 34:37.873
- 2 Matthew Herbert 34:52.097
- 3 Dan Dalmedo 35:01.990
- 4 Richard Lloyd-Frith 36:39.990
- 5 Chris Burrows 37:06.223
- 6 Elliot Maynard 39:36.583
- 7 Matt Williams 39:47.533
- 8 Ellis Kavanagh 38:47.623
- 9 Duncan Campbell-Cave 40:07.307
- 10 Louis Quaintance 40:09.660
- 11 Robert Wilson 39:58.873
- 12 Jasdir Bissell 40:22.890
- 13 Christopher Penzer 40:47.353
- 14 Joshua Bough 41:06.433
- 15 Fred Eburah 41:21.600
- 16 Christopher Hardy 41:32.220
- 17 Martin Cobb 42:44.173
- 18 Josh Titley 43:46.393
- 19 Daryl Wheelodon 44:29.293
- 20 Peter Kilbey 44:18.060
- 21 Chris Kavanagh 43:31.153
- 22 Paul Deeming 44:39.253
- 23 Ryan Murphy 44:34.483
- 24 Ethan Astle 45:21.643
- 25 Dominic Hardy 45:46.183
- 26 Brogan Mcculloch 45:45.913
- 27 Ben Andrews 45:54.103
- 28 Jack Cullen 45:59.323
- 29 Patrick Purcell 45:48.613
- 30 Andrew Mitcham 45:22.423
- 31 Andrew Smith 45:24.193
- 32 Ian Edgington 46:19.363
- 33 Frank Astle 46:28.573
- 34 Taaha Al-Shamma 46:05.250
- 35 Liam Dwyer 46:42.103
- 36 Alexander Boyd 46:50.893



Summer Savings

JOHNSONS
Part of the Coach Travel Group

Discover effortless, elegant escapes with Johnsons Coaches. Travel in Comfort. Stay in hand-picked hotels. Enjoy every moment.

Arundel Castle Chichester
4* The Langstone Hotel
From £899pp



Picturebook North Devon
4* Imperial Hotel
From £875pp



Torquay & Dartmoor
3* The Headland Hotel
From £999pp

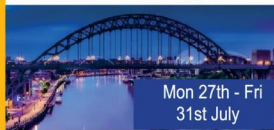


Hassle-Free Travel | Handpicked Hotels | Exceptional Value

Skye & Bute Voyager
Multiple Hotels
From £1099pp



Northern delights
4* Millennium Copthorne
From £799pp



Minehead & Somerset
3* The Northfield Hotel
From £879pp



Book Through
our website by
Scanning the
QR Code



Book Now. Save £50pp!
Lock in your perfect summer
getaway today!
CODE: SUMMER50



10k results



37 Col Hughes 47:01.243
 38 Teshler Hart-Edmonds 46:36.793
 39 Martyn Williams 46:43.993
 40 Daniel Bates 46:46.813
 41 Ian Morgan 47:12.343
 42 Jeremy Spires 47:00.493
 43 Andrew Kimball 47:07.423
 44 Austen Bamford 47:23.113
 45 Paul Burton 47:31.633
 46 Jude Pails 47:38.863
 47 Sean Read 47:18.123
 48 Alex Rich 47:38.417
 49 Jeff Farnes 48:32.113
 50 Wayne Farrington 48:00.103
 51 James Astle 48:54.433
 52 Peter Gallimore 49:10.633
 53 Mathew Froggatt 48:22.243
 54 Kevin Pryce 48:51.433
 55 Steve Hurley 48:57.523
 56 Trevor McGill 49:25.453
 57 Mark Smith 49:37.830
 58 James Elvins 49:13.843
 59 Josh Sharp 48:32.353
 60 Jamie Denham 48:32.413
 61 Kevin Wheeler 49:41.053
 62 Dan Jones 49:51.433
 63 Steve Chapman 50:05.323
 64 Richard Wainman 50:17.923
 65 Paul Inley 50:28.453
 66 Alex Riley 49:54.013
 67 Matthew Lewis 50:12.733
 68 Bradley Temple 50:41.413
 69 Gary Wickett 50:45.043
 70 Emmett Smith 50:30.373
 71 Geoff Henning 50:31.247
 72 John Taylor 51:13.120
 73 Daniel Johnson 51:17.623
 74 Paul Daymond 50:41.263
 75 James Gittins 50:51.253
 76 Lee Clarke 51:53.623
 77 Kevin Haste 51:50.233
 78 Joseph Sherman 51:29.263
 79 Neil Foster 52:13.483
 80 Alex Brockie 52:07.663

81 Rob Styles 52:28.063
 82 Peter Hawcroft 52:08.320
 83 Rob Titley 52:39.223
 84 Paul Gozra 52:31.603
 85 Owen Barnsley 51:35.983
 86 Rick Cund 52:20.263
 87 Steven Maycroft 52:20.443
 88 Sean Quinn 52:03.313
 89 Patrick Norris 53:44.383
 90 Andrew Edwards 53:13.423
 91 Thomas Edwards 53:14.413
 92 Peter Travis 53:58.243
 93 James Knight 53:59.623
 94 Lee Warburton 53:25.603
 95 Andy Hewitt 54:15.553
 96 Graham Croft 53:27.343
 97 Thomas Clinton 53:40.543
 98 Habib Khan 54:43.873
 99 Stuart Evans 54:28.063
 100 Paul Britton 54:44.923
 101 Daniel Hunt 55:03.733
 102 Saif Seid 54:31.393
 103 Adam Kent 55:23.250
 104 Ryan Butler 54:34.650
 105 Jordan Harvey-Gill 56:04.577
 106 Sebastian Mitchell 55:17.353
 107 Michael Powell 54:57.613
 108 Kevin Ell 55:22.753
 109 Ian Stokes 56:46.123
 110 David Stevenson 56:32.383
 111 Daniel Szczygielski 56:33.703
 112 Nigel Szczygielski 56:32.593
 113 Cris Marriott 56:28.453
 114 Tony Jones 57:09.600
 115 Leigh Ganderton 57:23.653
 116 Neil Jongman 57:31.033
 117 Andrew Foster 56:47.803
 118 Tommy Fojut 57:29.023
 119 Ron Ridewood 58:03.613
 120 Stuart Matthews 57:38.983
 121 David Gould 58:17.893
 122 John Paul Shanahan 57:57.613
 123 Keith Davies 58:19.140
 124 Michael Ambrose 58:16.153
 125 Kevin Burns 58:16.570
 126 Matthew Hunter 57:57.523

127 Archie Tong 57:57.793
 128 David Moseley 58:34.483
 129 Simon Stadnyk 57:57.283
 130 Oliver Lambon 59:22.723
 131 Josh Talliss 58:33.703
 132 Stephen Burton 59:16.933
 133 Edward Dixon 59:49.993
 134 Alan Dodds 59:37.063
 135 Cameron Atkinson 59:11.923
 136 Mark Witheridge 01:00:25.080
 137 Gavin Woods 01:00:27.240
 138 Buster Yarranton 01:01:05.383
 139 Paul Price 01:00:35.593
 140 Keith Evans 01:00:54.523
 141 Dean Earl 01:01:23.443
 142 Mark Cond 01:01:59.383
 143 Stuart Durose 01:01:57.523
 144 Ed Shovelton 01:03:01.903
 145 Joseph Cummins 01:03:16.513

146 Andy Amor 01:03:37.033
 147 James Andrews 01:03:26.897
 148 Andy Price 01:03:38.443
 149 Stuart Brindley 01:03:55.693
 150 Rob Poyner 01:03:38.983
 151 Steve Cox 01:04:02.683
 152 Paul Heath 01:04:34.093
 153 Nick Mealey 01:05:27.613
 154 Andy Armstrong 01:04:57.913
 155 Stephen Franklin 01:06:21.253
 156 Dom Hayes 01:06:40.860
 157 Andrew Field 01:07:34.333
 158 James Field 01:07:34.603
 159 Stuart Westwood 01:07:33.673
 160 Jordan Mcmutrie 01:07:36.253
 161 Sivakumar Rajendran 01:07:46.003
 162 Stephan Couture 01:08:42.193
 163 Josh Robinson 01:08:46.963

164 Martin Baker 01:09:28.543
 165 Dug Cope 01:09:54.060
 166 Ed Jones 01:11:15.763
 167 Matthew Richards 01:10:54.223
 168 Mat Wright 01:11:20.263
 169 Richard Hartigan 01:11:11.443
 170 Ian Bowdler 01:12:15.433
 171 Nathan Ridout 01:13:24.373
 172 Matt Clarke 01:15:37.603
 173 Harish Krishnan 01:16:41.023
 174 Jamie Marchesano 01:28:06.253
 175 Roger Beacham 01:29:23.533
 176 David Andrewartha 01:30:07.933



MONEYWATCH FINANCE | 1 Hagley Street | Halesowen | West Midlands | B63 3AS

Mortgage & Insurance advice you can trust

Peter Hunt Cert CI(MP) Cert PFS CeMap

Peter is a partner at Moneywatch Finance with over 30 years experience in the mortgage/property market, he will be able to advise & guide you through the various mortgage options available to you.*

He has appeared on BBC radio providing listener's with the benefit of his financial knowledge & expertise.

*Moneywatch Finance is an appointed representative of HL Partnership Limited which is authorised & regulated by the Financial Conduct Authority.

Advice on all types of mortgages* such as:

- 🏠 First time buyers
- 🏠 Home movers
- 🏠 Remortgages
- 🏠 Buy to let mortgages
- 🏠 Self build & custom build mortgages
- 🏠 Bridging finance

Also advice regarding:

- 🏠 Life assurance
- 🏠 Critical illness
- 🏠 Serious illness cover
- 🏠 Long term income protection
- 🏠 Property insurance

*There may be a fee for mortgage advice. The precise amount will depend upon your circumstances but will be agreed with you before proceeding.

Peter has been recognised in the Times Vouched For guide to the UK's top rated financial advisers since 2017.

He is also one of the experts on the panel of the Grand Designs Live TV show & will be seen appearing on the theatre stage providing his financial knowledge for any budding self build or custom builder.

For more information, please call Peter Hunt on

0121 503 0961
or
07880 900841

e peter@moneywatchfinance.com
w www.moneywatchfinance.com

“Voted Best Mortgage Advisers 2016 - West Midlands”
Wealth & Money Management Awards, by Wealth & Finance International, Voted Best Mortgage & Insurance Advisers West Midlands in the 2020 & 2022 SME Finance News awards.

One of the panel experts for the Grand Design Live TV Show & in the Times Vouched for guide to the UK's top rated financial advisers every year since 2017.



Vouched for TOP RATED ADVISER 2025

MONEYWATCH FINANCE
Advice You Can Trust

Mortgages | Buy to let mortgages | Life insurance | House insurance | Income protection | Remortgages | First-time buyer mortgages



Proud members of
Checkatrade.com
Where reputation matters

ROOFINGREGISTER

**YOUR TRUSTED
ROOFING SPECIALISTS**

VANGUARD ROOFCARE LTD

We specialise in

- Finding and repairing leaks
- Flat roof repairs and installations
- Valleys and gable end repointing
- Chimney repointing and lead-work
- Spray foam removal
- Roof replacements
- Roof 'MOTs'



SUMMER OFFERS

Roof 'MOT' inspection from **£50**
 Find and repair leaks from **£199**
 Moss removal from **£299** Full
 roof renovation from **£599** Spray
 foam removal from **£995**

Prevent
rather than
replace!



SCAN ME

10% OFF WITH THIS ADVERT



Call us on 01562 315496 or 07307 048343
vanguardroofcareltd@mail.co.uk • www.vanguardroofcareltd.co.uk



PROFESSIONAL RELIABLE TRUSTED

avonroofing6@gmail.com • www.avon-roofing.co.uk

PROFESSIONAL • RELIABLE • TRUSTED

- ◆ New roofs
- ◆ Re-roofs
- ◆ Roof repairs
- ◆ Tiles/slates replaced
- ◆ Fascias
- ◆ Cladding
- ◆ Soffits
- ◆ Gutters
- ◆ Down pipes
- ◆ Flat roof solutions
- ◆ EPDM rubber roofs
- ◆ Chimneys rebuilt
- ◆ Re-pointing
- ◆ Re-bedding

15% OFF
when mentioning this advert

- ◆ DRY VERGES
- ◆ DRY RIDGES
- ◆ EAVES PROTECTION SYSTEMS (EPS)

Commercial roof projects undertaken

Free Quotations - All Work Guaranteed

Call Jake on 07389 844 856 or 01789 507 131 for a free quotation

Find us on Google

Sagar Dattatraya Meghe from Meghe Group with Dr Murugan Venkatachalam IFS consul general of India, Birmingham and Michael Punt, Bromsgrove School Headmaster are lookign forward to the new partnership. Picture by Simon Hadley. simonhadley.co.uk



Partnership to bring schools

BROMSGROVE School has launched a new partnership with the Meghe Group in India to open two innovative schools. It will begin with a flagship campus in Pune which is scheduled to welcome its first students in September 2027. This collaboration brings together two highly respected educational institutions to offer families a choice of both the Indian curriculum and an international curriculum. That has been delivered with the shared values of academic ambition, global outlook and holistic development. The agreement was assisted by Vipul Bhargava and the team from Novistra Capital who provided a key partnership advisory service.

Bromsgrove School headmaster Michael Pung said: "We are incredibly excited to take Bromsgrove School's heritage, ethos and values to India. "The shared vision of Meghe and Bromsgrove is to provide a world-class education that fosters academic excellence, character development, creativity and cultural awareness in today's interconnected world. "Megrove Pune will uphold the same high standards and holistic approach to education that our schools worldwide are known for." The school added it marked an exciting new chapter for both organisations, and we look forward to sharing further details about the schools, their leadership, and admissions timelines in the months ahead.

INTERNATIONAL METALS & CABLE RECYCLING LTD

We purchase all Ferrous and Non Ferrous Metal Batteries and Cables

Collection Service Available

Long Marston Road, Long Marston, Stratford Upon Avon, Warwickshire, CV37 8AQ

01789 721 288

info@imcr.co.uk

Open Mon/Fri - 8am - 5pm





Silver-grey wood in harmony with nature

The OrganoWood greyed wood finishing system

A simple 2-step treatment for decking, cladding, and garden timber. It creates a beautiful silver-grey patina, leaves a smooth surface and helps to reduce maintenance.



01 Wood Protection Base Coat



02 Surface Protection Top Coat



Beautiful



Easy to use



Natural



Durable



High Quality

www.OrganoWood.co.uk

Laugh on the lake at comedy night

RUBICON Leisure and Arts Council England-funded Reimagine Redditch will bring a new live comedy show to The Boathouse Cafe at the Arrow Valley Visitor Centre this summer.

The Boathouse Comedy Show is due to transform the picturesque lakeside venue into a vibrant hub of laughter on Friday, June 19, offering audiences a lively evening of stand-up comedy in a scenic setting.

The collaborative event will bring together one of Rubicon Leisure's vibrant community venues with Reimagine Redditch's expertise in curating high-quality live performances.

The partners want to create an engaging, memorable night out in one of Redditch's most popular locations.

Audiences can look forward to a dynamic mix of established comedians and rising stars from the UK comedy circuit, the organisers said.

Headliners

Headlining are Andy White and Hannah Weetman atop an impressive line-up.

Set against the scenic backdrop of Arrow Valley Country Park, the event will offer a fresh take on live entertainment, appealing to both dedicated comedy fans and those looking for something different for a night out.

Running from 8pm until 11pm, the show promises a relaxed, welcoming atmosphere.

A Rubicon Leisure spokesperson said: "We're delighted to be working in partnership with Reimagine Redditch to bring this event to life."

"By combining our expertise, we're able to offer something exciting and different for Redditch."

A Reimagine Redditch spokesperson said: "We're passionate about creating new creative activities in the town that people want to see so we're thrilled to be working with Rubicon Leisure and local comedian Jackie Kain to add something different to Redditch."

Visit arrowvalley.co.uk/comedy-show/ to book tickets.

Fight club marks a quarter of a century in town



Members of Hopwood MMA will be celebrating the club's 25th anniversary. s

by **Tristan Harris**
tristan.harris@bullivantmedia.com

A MARTIAL arts club is celebrating 25 years of developing athletes, building champions and strengthening the community.

Hopwood MMA Fight Centre was founded in Bromsgrove by Andy Hopwood and, in the past quarter of a century, has helped hundreds of people build confidence, discipline and resilience through combat sports training.

The club's athletes have achieved success at every level of competition, including two youth world champions, two adult world silver medallists, three youth national champions, one British champion, six English champions and eight

regional champions, across a range of combat sports.

Those achievements reflect not only sporting success but the club's commitment to helping people develop confidence, character and life skills through martial arts.

Founder and chief instructor Andy said: "Winning titles is something we're incredibly proud of but the real success stories are the people who walk through our doors and discover confidence, self-belief and resilience they didn't know they had."

"Over the last 25 years, we've helped hundreds of people challenge themselves, overcome obstacles and become part of something bigger than themselves. That's what makes this anniversary so special."

The club's landmark celebrations come as Hopwood MMA

continues to expand its community impact through its fight sports scholarship programme community interest company.

The programme was created to help remove the financial barriers that can prevent talented young athletes from accessing training and competitive opportunities. Through fundraising, sponsorship and community partnerships, the programme aims to ensure young people are not held back by financial circumstances.

As part of its next phase of development, Hopwood MMA is now seeking local businesses to support both its fight team and future fight night events.

The next fight night is on July 18, at Stourport Manor Hotel, where 12 members of the team will be competing.

Businesses can become involved, through sponsorship

packages, to help support athlete development, competition costs, equipment, coaching and community projects. In return, they will receive exposure through fight-night branding, social media and event marketing.

Andy also praised the club's strong community support over the past 25 years, adding he would love to hear from local companies wanting to be part of the next chapter. The founder said he hopes past and present members will share their memories and join in celebrating the club's opportunities, community spirit and achievement.

Interested businesses can call Andy on 07801 237980 or can email andy@hopwooduk.com for more details about sponsorship and partnership opportunities and the fight sports scholarship programme.

SUMMER SALE

A Better Home Starts *Here*

BUY NOW PAY LATER

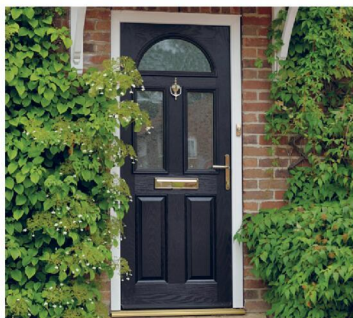
or 6 months after installation,
spread the cost at **19.9% APR**
REPRESENTATIVE*



LIVING SPACES
Orangeries, Conservatories & Glass Rooms



WINDOWS
Exclusive UPVC & Aluminium Range



FRONT & BACK DOORS
Composite, UPVC, Solid Core & Aluminium



DOORS
French, Patio & Bi-Folding Doors

MIDLANDS' LARGEST SHOWROOMS

OPEN 7 DAYS A WEEK

Kidderminster Showroom
Worcester Road
Kidderminster DY10 1JR
Tel: **01562 814868**

Worcester Showroom
36 Carden Street
Worcester WR1 2AT
Tel: **01905 886954**

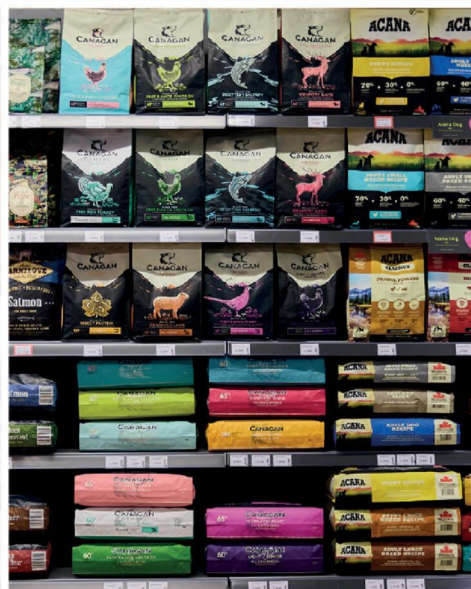
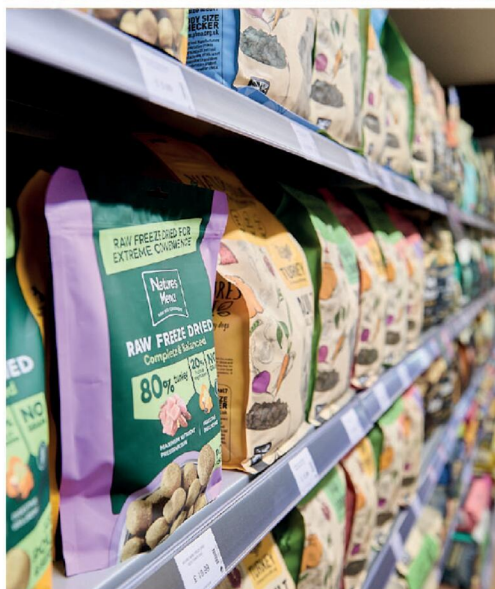
5STARWINDOWS.CO.UK



*Credit is subject to application and affordability. Terms and conditions apply. £1000 minimum order value applies to all finance plans, with a maximum loan value of £50,000 and a minimum deposit of £99. E99 deposit option is only applicable to orders up to the value of £5,000 including VAT. Balance can be repaid within 6 months with a £29 exit charge. 5 Star Construction Services Limited, Worcester Road, Kidderminster DY10 1JR (FRN 730066) trading as 5 Star Windows & Conservatories is a credit broker and is authorised and regulated by the Financial Conduct Authority. Credit provided by Novuna Personal Finance, a trading style of Mitsubishi HC Capital (UK) PLC, authorised and regulated by the Financial Conduct Authority (Register no. 704348).

Just for Pets

The UK's Best Rated Dog Foods In Store Now!



Visit your local store today:

Just for Pets Bromsgrove 20 Market St, Bromsgrove B61 8DA (opposite Asda)

Just for Pets Droitwich Saltway, Droitwich WR9 8LA (opposite Waitrose)

Just for Pets Kidderminster, New Road, Kidderminster DY10 1HG

www.justforpets.co.uk

Strong showing for county in tourism awards

WORCESTERSHIRE has taken centre stage at the VisitEngland Awards for Excellence, held on Wednesday June 3, with its tourism sector recognised as one of the strongest in the country.

The finalists progressed to the national awards following success at the Visit Worcestershire Tourism Awards, placing the county among England's strongest-performing destinations.

Four businesses went on to secure top accolades, firmly putting the county in the national spotlight.

Leading the celebrations, family attraction Attwell Farm Park won two awards on the evening, securing the Bronze Award in the Large Visitor Attraction of the Year category and another Bronze Award in the Accessible and Inclusive Tourism Award.

The double win reflects the attraction's continued focus on creating memorable and welcoming experiences for all visitors.

Further success followed in the accommodation categories, with two rural businesses recognised for their outstanding accommodation.

Bredon View Glamping Retreats received the Silver Award in the Camping, Glamping and Holiday Park of the Year category, while Rowley Farm Holidays, based in Holt Heath, secured the Bronze Award for Self Catering Accommodation of the Year.

This marks another milestone for Rowley Farm Holidays, building on their previous Bronze Award at the 2022 VisitEngland Awards.

Worcestershire's Morgan Motor Company experience was also honoured, securing the

Gold Award in the Small Visitor Attraction of the Year category.

As the highest accolade, this places the experience among the very best small visitor attractions in England and highlights the county's strength in delivering distinctive, heritage led experiences.

Celebrating individual achievement, Worcestershire's Mick Hurst, founder of the Battle of Evesham Festival, was crowned VisitEngland Tourism Superstar 2026.

After securing a landslide public vote earlier this year, the award recognises his passion and dedication in growing the Battle of Evesham into one of Europe's leading historical re-enactment events.

Coun Adam Kent, Cabinet Member for Responsibility for Finance, Corporate Services and Business at Worcestershire County Council, said: "These awards are a tremendous achievement and a proud moment for the whole county."

"To see Worcestershire businesses recognised on the national stage, and in such numbers, speaks volumes about the talent, dedication and creativity of our tourism sector."

"Tourism is vital to our local economy, supporting jobs, livelihoods and communities across the county."

The Visit Worcestershire Tourism Awards, which act as the gateway to the national stage, are now open for applications and will close on Wednesday June 17.

Businesses can apply via: visitworcestershire.org/tourism-awards.



The Morgan Experience won a gold award.



Attwell Farm Park won the bronze award.



MONSOON
20 YEARS
2003-2023

73-75 MAY LANE, HOLLYWOOD
BIRMINGHAM, B47 5PA
T: 01564 829 200
WWW.MONSOON.RESTAURANT

National Award Winning Restaurant



MONSOON
EAT . DRINK . RELAX



T: 01564 829 200 WWW.MONSOON.RESTAURANT

OFFER: MONDAY & TUESDAY | £18.00PP

ANY STARTER ANY MAIN DISH* ANY NAN OR RICE & TEA OR COFFEE**

*(Fish, & King Prawns £3.00 extra per dish) | ** (Plain Coffee)







ARTA AWARDS
RESTAURANT
OF THE YEAR 2024
WEST MIDLANDS

Motoring

www.carfinder247.co.uk

TELEPHONE 01527 588688 FACSIMILE 01527 584371



First hybrid supercar from Audi

AUDI is unveiling its first supercar with a high-performance hybrid powertrain - further accelerating technological progress. With and a top speed of more than 217mph, the Nuvoletti is set to become the most powerful vehicle and the fastest production vehicle in the history of the four rings.

The Audi Nuvoletti accelerates from 0-62mph in 2.6 secs and reaches 124mph in 6.8 secs.

These figures are enabled by a range of innovations inspired by Formula 1, including the high-per-

formance hybrid powertrain, quattro predictive ride, active aerodynamics, and the new Audi Space Frame (ASF) with carbon exterior.

"With the Audi Nuvoletti, we are accelerating technological progress," says Gernot Döllner, Chairman of the Board of Management of AUDI AG.

"It shows what is possible when the focus is on technology, performance, and execution through teamwork — and when we achieve progress together."

The mid-engine layout defines the proportions, resulting in a mono-

lithic volume, a powerful stance, and a strong presence.

The exterior is characterised by Audi's new signature colour Titanium, a paint also used on the Audi Concept C and the Audi Formula 1 race car. In combination with carbon elements, it

highlights the precise lines of the Nuvoletti.

The Nuvoletti is powered by a hybrid high-performance powertrain with a maximum system output of 736 kW.

It combines a 4.0-litre V8 biturbo engine delivering 588 kW with three axial flux electric motors, each producing 110 kW.

The lithium-ion battery has a gross capacity of 7.3 kWh.

The combustion engine delivers a maximum torque of 730 Nm and reaches up to 10,000 rpm — a range previously reserved for motorsports.

Two oil-cooled axial flux electric motors at the front axle deliver up to 2,150 Nm of torque.

As an integral part of the quattro system, they support variable torque distribution.

A third electric motor between the V8 mid-engine and the transmission completes the drive concept.

The quattro drive is one of Audi's defining innovations and stands for traction, control, and driving dynamics in all conditions.

In the Nuvoletti, Audi further develops this principle and defines

the next generation of all-wheel drive with the quattro predictive ride.

The drive units distribute torque precisely in both longitudinal and lateral directions.

The brakes stabilise the vehicle through targeted interventions and reduce slip.

The aerodynamics adjust downforce according to the situation.

The electric motors at the front axle are a key element of the predictive dynamics system, enabling variable torque vectoring for agile cornering and stability at high speeds.

The intelligent and predictive tuning of vehicle dynamics ensures maximum traction and control - even during severe lateral and tire slip, on wet or snowy roads, and in changing grip conditions.

The Audi Nuvoletti stands for uncompromising performance and absolute focus.

The pre-production prototype presented today was developed in a remarkably short time through close international collaboration.

It is named after Tazio Nuvoletti, one of the most prominent figures in motorsport history.

Born in Italy, he was known for his fearlessness, ingenuity, dedication, and a single-minded will to succeed.

**SELLING YOUR CAR?
WE PAY THE MOST**

We can visit you and pay immediately
Same day service

**CAR BUYERS LTD
07831 245 313**

**JAPANESE
CARS
WANTED**

• HONDA • TOYOTA • SUZUKI
• SUBARU • MAZDA
1999 - 2014 MODELS

PLEASE CALL DOMINIC
07581 566064

HAGLEY CARS
EST. 40 YEARS



Learn from yesterday,
live for today,
hope for tomorrow.
Anonymous



Family Notices

Tel: 01527 588688 Email: reception@bullivantmedia.com

IN MEMORIAM

Stephen John Adams

Passed away 14/6/2016
10 years have gone by
Never from our thoughts and still missed
Love from
Mom & Dad, Simon, Beau,
Courtney,
family and friends
XXX



If you have a message for a loved one, give our team a call



01527 588688

If you have a message for a loved one, call our team on

01527 588688

MEMORIAL SERVICES

As Time Goes By

YOUR LOCAL FAMILY RUN MEMORIAL SUPPLIER

Headstones, Cremation Tablets, Additional Inscriptions and Renovation Work

Web: www.astimegoesby.org.uk
Email: kfporter@blueyonder.co.uk

Please call 01527 550505

To arrange a home visit or to find out our opening times

Unit 5, Dunlop Road, Hunt End Industrial Estate
Redditch B97 5XP

"MEMORIALS THAT REFLECT A LIFETIME"



FUNERAL DIRECTORS

James Giles and Sons Ltd
Est. 1918
The Complete Funeral Directors

Allow our family to care for your family

www.jamesgilesandsonsltd.co.uk

BROMSGROVE
01527 872318

DROITWICH
01905 783188

STUDLEY
01527 852213

PRE-PAID FUNERAL PLANS AVAILABLE



FUNERAL DIRECTORS

An Independent Family Owned Funeral Directors

THOMAS BROTHERS

Family owned funeral homes in Redditch, Wythall, Alvechurch, Bromsgrove & Alcester.
We provide a friendly, dignified service paying special attention to detail.

REDDITCH • BROMSGROVE
01527 547777 01527 831700

WYTHALL • ALVECHURCH • ALCESTER
01564 822001 0121 445 3422 01789 330939

"A family concern"

www.thomasbrothers.co.uk
email: admin@thomasbrothers.co.uk

Special Family Announcements



Births, Engagements, Weddings, Anniversaries, Happy Birthdays, Congratulations or sadly Deaths and In Memory Announcements can all be placed in your **Standard** to appear in printed newspaper weekly, and online247

You can call us on **01527 588688** or email details to us (including photograph if desired) with your telephone contact details and we will call you back to confirm cost

reception@bullivantmedia.com

Prices start from just

£15
(inc Vat)



Learn from yesterday,
live for today,
hope for tomorrow.
Anonymous



Family Notices

Tel: 01527 588688 Email: reception@bullivantmedia.com

FUNERAL DIRECTORS

FUNERAL DIRECTORS

MORTONS FUNERAL DIRECTORS

“Where saying goodbye means everything”

Whatever style of funeral you're looking for, whether direct cremation, traditional, contemporary, or somewhere in between, you can put your trust in us.

Available 24 hours, seven days a week

0121 459 9111

Offices in Northfield, Cotteridge and Rubery





Professionally qualified independent funeral directors
For more information, visit mortonsfunerals.co.uk






R.L.Rea

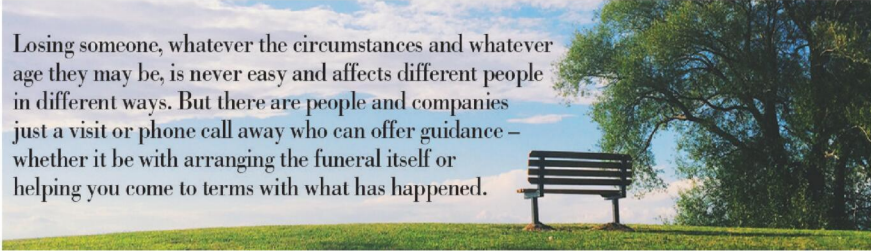
Funeral Directors Ltd.

- A Family Firm Established in 1967
- Your Local, Independent Complete Funeral Directors and Memorial Masons
- Dedicated to Providing a Personal & Professional Service 24 hours a day, 365 days a year
- Private Chapel of Rest
- Pre-arranged Funeral Plans Available
- Direct Cremation Available

www.rlreafuneraldirectorsltd.co.uk
info@rlreafuneraldirectorsltd.co.uk



BROMSGROVE 01527 831723



Whatever the occasion, why not send your loved ones a message.... *Call our team on* **01527 588688**



Appointments

www.careerfinder247.co.uk

TELEPHONE 01527 588688 FACSIMILE 01527 584371



**DROITWICH SPA
HIGH SCHOOL
AND SIXTH FORM CENTRE**

Life. Changing. Learning.

School Receptionist

(Part Time, Term Time Only plus banked hours)

877.5 per annum usually worked at the rate of 22.5 hours per week (3 full days Monday to Wednesday each week) during published term times with the balance being worked during peak periods or non-term time

Salary £12,754 per annum (£24,522 FTE)

This vacancy is a rolling vacancy and applications will be reviewed as they are received.

Interviews and appointments may take place prior to the closing date shown.

We are seeking a highly organised, professional and personable individual to join our team from September 26 as a School Receptionist in our busy and vibrant secondary school.

This is a key frontline role and an excellent opportunity for someone who thrives in a fast-paced environment and takes pride in delivering a warm, efficient and responsive service.

About the Role

As the first point of contact for visitors, parents and students, you will play a vital role in creating a positive and welcoming impression of the school. The role requires a calm, confident and resilient approach, as well as the ability to manage competing priorities in a demanding and high-visibility position.

Key responsibilities include:

- Providing a friendly and professional reception service to all visitors and callers
- Managing enquiries, phone calls and communications efficiently and courteously
- Supporting administrative functions across the school
- Maintaining accurate records and handling sensitive information with discretion
- Assisting with student queries and day-to-day operational matters
- Providing first aid to students and staff as required (training will be provided if necessary), ensuring appropriate care and accurate record-keeping

About You

We are looking for someone who:

- Has excellent interpersonal and communication skills
- Is highly organised, with the ability to multi-task and prioritise effectively
- Remains calm under pressure in a busy school environment
- Demonstrates professionalism, discretion and attention to detail
- Has strong administrative and IT skills
- Is willing to undertake first aid responsibilities as part of the role
- Enjoys working as part of a team and contributing to the wider life of the school

What We Offer

- A supportive and welcoming school community
- A varied and engaging role at the heart of school life
- Opportunities to develop your skills in a professional environment
- A term-time only working pattern, supporting work-life balance

This is a rewarding but demanding role, ideally suited to someone who embraces responsibility and takes pride in being the "face" of the school.

For more information or to obtain an application form please visit our website at:

<https://website.droitwichspahigh.worcs.sch.uk/index.php/school/join-us/job-vacancies/>

'Droitwich Spa High School & Sixth Form Centre is committed to safeguarding and promoting the welfare of children and young people and expects all staff and volunteers to share this commitment'.

- Closing Date: 9.00 am on Friday 26 June 2026, interview date TBC.

Droitwich Spa High School and Sixth Form Centre, a charitable company limited by guarantee registered in England & Wales, company number 07666185. Registered office: Briar Mill, Droitwich Spa, Worcestershire, WR9 0AA.



www.taurustaxis.co.uk

Are you Looking To Top Up Your Salary or Pension?

Then we could Help !!

DRIVERS REQUIRED

With or without Taxi Badge / Vehicle
Clean Licence Essential

Holiday pay will be accrued and paid

We also require
PSV DRIVERS

with valid CPC card & training, part time hours,
very good rates of pay.

**For Further Details Please Call
07773 022 239**



DRIVERS

Full and part time drivers required for home to school contracted transport. Competitive rates of pay and flexible working hours.

Company vehicle provided, and full assistance obtaining your private hire licence will be given.

For further details please call

01527 60000

or email accounts@a2b60k.co.uk

GOT A VACANCY TO FILL?

Contact Caroline or Kelly on
01527 588625 • 01527 588749

caroline.birkenhead@bullivantmedia.com | kelly.taylor@bullivantmedia.com

Appointments

www.careerfinder247.co.uk

TELEPHONE 01527 588688 FACSIMILE 01527 584371

Gold Crest

Require the following in the Redditch, Bromsgrove, Droitwich and Kidderminster areas

Part Time Drivers

Transporting children to school. Vehicle provided.

– ALSO –

Passenger Assistants

Part time hours with or without experience.

Contact 07399 848 639

FLAIR • DISCIPLINE • ACADEMIC RIGOUR

BROMSGROVE SCHOOL

FOUNDED 1553

Bromsgrove is a co-educational Boarding and Day School well situated in the South Midlands with excellent facilities set in 100 acres of attractive grounds.

GATEKEEPER

(FULL-TIME 40 HOURS PER WEEK TO INCLUDE WEEKENDS)

We seek a personable individual to provide a professional welcome to school visitors, assist with deliveries and provide security assistance.

Full details and application forms are available on the School website: www.bromsgrove-school.co.uk

Closing date for all applications 15th June 2026

The School is committed to safeguarding and promoting the welfare of children and young people. Applicants must be willing to undergo child protection screening including checks with past employers and the DBS.

Position to fill?



We can offer you....

**GREAT LOCAL COVERAGE
IN PRINT & ONLINE**

Contact Caroline or Kelly on

01527 588625 • 01527 588749

caroline.birkenhead@bullivantmedia.com

kelly.taylor@bullivantmedia.com

Bullivantmedia
GROUP LIMITED

JUST
CAN'T
GET
THE
STAFF?

Bullivantmedia
GROUP LIMITED

We can offer you
**GREAT LOCAL COVERAGE
IN PRINT & ONLINE**

Contact
Caroline or Kelly

01527 588625

01527 588749

caroline.birkenhead@bullivantmedia.com

kelly.taylor@bullivantmedia.com

Classified

www.directory247.co.uk

TELEPHONE 01527 588688 FACSIMILE 01527 584371

PUBLIC NOTICES

PUBLIC NOTICES

BROMSGROVE DISTRICT COUNCIL & REDDITCH BOROUGH COUNCIL

Advertisement Key: EIA = Environmental Impact Assessment, DEP = Departure, FPS = Footpath Setting, MAJ = Major Development.

NOTICE UNDER ARTICLE 15(3) OF THE DMP0 2015 (AS AMENDED) OF APPLICATION FOR PLANNING PERMISSION ACCOMPANIED BY AN ENVIRONMENTAL STATEMENT

26/00396/HYB EIA, DEP, FPS, MAJ
Site: Land At, Houndsfield Lane, Hollywood, Worcestershire

Applicant: Bellway Strategic Land Part of Bellway Homes Limited

Proposal: Hybrid Planning permission for the demolition of existing buildings and the erection of up to 680 residential dwellings (use class C3), land safeguarded for the provision of a local centre (use classes F1, F2 and F3), land safeguarded for a 1FE primary school (use class F1), land safeguarded for the provision of a car park and mobility hub and associated infrastructure, public open space and landscaping with all matters reserved except for access.

The application is accompanied by an Environmental Statement (ES). Members of the public may obtain copies of the Environmental Statement by contacting Savills via the following email address: SouthamptonPlanning@savills.com. A copy of the Environmental Statement on USB flash drive is available at a charge of £25.00. Enquiries in respect of this or printed copies of the ES and Appendices should be made to Savills.

Application forms, plans and the ES may be inspected online <https://publicaccess.bromsgroveandredditch.gov.uk/online-applications>

Comments can be submitted online, via email to newplan@bromsgroveandredditch.gov.uk or in writing Planning Services, Redditch Town Hall, Walter Stranz Square, Redditch, B98 8AH. Comments should be made within 30 days of the date of this publication. The Council does not acknowledge comments but will make these available for inspection online.

PUBLIC NOTICES

BROMSGROVE DISTRICT COUNCIL & REDDITCH BOROUGH COUNCIL

Advertisement Key: CA = Conservation Area, ADVSTD = Wider Publicity, FP = Affects Footpath, FPS = Footpath Setting, MAJ = Major Development.

26/00586/S73 CA

Site: Sydenham, Victoria Road, Dodford, Worcestershire B61 9BU.

Proposal: Application Reference Number: 24/01274/FUL Date of Decision: 09/04/2024. Replacement Plans: (to add 2 small dormer windows at the rear);

Proposed floor plans: Drawing reference 05H
Proposed elevations: Drawing reference 06H
Proposed sections: Drawing reference 07D

26/00508/FUL ADVSTD FP FPS

Site: 39 Parish Hill, Bournheath, Worcestershire B61 9JH.

Proposal: Full Planning Application for the erection of 4 detached dwelling houses and associated access.

26/00657/REM MAJ

Site: Land On The North Side Of Brockhill Lane, Tardibridge, Worcestershire.

Proposal: Application for approval of reserved matters (layout, scale, appearance and landscaping) for the construction of 250 dwellings and associated works and infrastructure, pursuant to outline planning permissions 19/00976/HYB and 19/00977/HYB as amended by 24/00753/S73 and 24/00740/S73 (Cross boundary application with Redditch BC 26/00511/REM).

Application forms and plans may be inspected online <https://publicaccess.bromsgroveandredditch.gov.uk/online-applications>

Comments can be submitted online, via email to newplan@bromsgroveandredditch.gov.uk or in writing Planning Services, Redditch Town Hall, Walter Stranz Square, Redditch, B98 8AH. Comments should be made within 30 days of the date of this publication. The Council does not acknowledge comments but will make these available for inspection online.

PUBLIC NOTICES

Warwickshire County Council

ROAD TRAFFIC REGULATION ACT 1984

Warwickshire County Council has made the following Temporary Traffic Orders:

MOAT LANE, ULLENHALL

Order Effect: Road closed to vehicular traffic.

Reason for Order: New water connection works.

Order Commences: 16 June 2026 for up to 18 months.

Anticipated Completion: 18 June 2026.

Access & Diversion: Mill Lane, Tanworth Lane, Birmingham Road, High Street, New Road, Henley Road, Hunger Hill, Green Lane, Grimshaw Hill and vice versa.

Contractor: Network Plus, Tel: 01332 820920.

For all of the above temporary orders, pedestrian access to and egress from properties and land situated adjacent to the length of road to be closed will be maintained at all times. Vehicular access will be maintained where possible.

To report any problems with these works or for further details of our current & planned roadworks visit our website warwickshire.gov.uk/roadworksmap or call us 01926 412515.

S Duxbury, Director of Strategy, Planning & Governance, Shire Hall, Warwick CV34 4RL Date 11 June 2026

PUBLIC NOTICES

PUBLIC NOTICE LICENSING ACT 2003

APPLICATION FOR A PREMISES LICENCE OR CLUB PREMISES CERTIFICATE TO BE GRANTED UNDER THE LICENSING ACT 2003

Riva Omar of 109 New Road, Rubery, Birmingham, B45 9JR.

The applicant proposes to carry out the following licensable activities or qualifying club activities on or from the above premises/club premises: Sale of Alcohol for consumption on the premises.

Representations by interested parties or responsible authorities should be made in writing to Worcestershire Regulatory Services, Wyre Forest House, Finepoint Way, Kidderminster, DY11 7WF or enquiries@worcestersregservices.gov.uk

By 01/07/2026

The record of the application is available for inspection by appointment. Please call us on 01905 822799 for an appointment.

IT IS AN OFFENCE, LIABLE ON CONVICTION TO AN UNLIMITED FINE, UNDER SECTION 158 OF THE LICENSING ACT 2003 TO KNOWINGLY OR RECKLESSLY MAKE A FALSE STATEMENT IN, OR IN CONNECTION WITH, AN APPLICATION

PUBLIC NOTICES

MOLLY PRATTY Deceased

Pursuant to the Trustee Act 1925 anyone with a claim against or an interest in the Estate of the deceased, late of 18 Belmont Close, Redditch, B97 5AV, who died on 31/01/2026, must send written details to the address below by 13/08/2026, after which the Estate will be distributed with regard only to claims and interests notified.

Right Legal Group, 16 Stanier Way, Wyvern Business Park, Derby, DE21 6BF. Ref: 46206

PUBLIC NOTICES

Keeping you up to date with all the latest information on Planning Proposals, Traffic Notices, Goods Vehicle Operator Licences, Licences To Sell Alcohol, Probate Notices.....

SALES & WANTS

CAR ACCESSORIES

METRO FOR SALE & PARTS

Good Runner

Offers welcome

Ring Steve on 01527 69309 or 07541 279 957

MISCELLANEOUS

ELECTRIC RECLINING ARMCHAIR

Brand New Armchair, very comfortable and with many adjustments. Helps you get in and out with lift and tilt controls.

£300 - Ring or text 07460 943678

Delivery available Located in Bromsgrove

MOBILITY SCOOTER

'Litleway 4'

Balanced Safety Scooter

Breaks into 4 parts for Car Boot

Basket, Charger

New batteries

Could deliver

£280

01789 778174

MISCELLANEOUS

RECLINER CHAIR

electric rise & recline £169 Manual recline chair £60 High seated chair £40 Can deliver 07703 925662

BEDS NEW Doubles £95 Singles £59 King size £159, Second hand doubles £49 Singles £29 Fridges £49 Freezers £59 Can deliver 07703 925662

MISCELLANEOUS

2 stroke Petrol Strimmer excellent condition £80 07810472885

LEATHER textile settee sold as seen arm-high 21" width 34" length 7" £50 ono 01527 64333

CAMPING trolley with cover almost brand new £25 01527 524491

LARGE BBQ on wheels with gas bottle good condition £60 01527 465036

MISCELLANEOUS

ROCKING horse (Mamas & Papas) with reins, saddle & stirrups. Height from floor to saddle 28". Very good clean condition. Collection only. £45.00. Tel: 07934132759

VINTAGE 70's Taunton Vale - herb design (green & white) oblong melamine serving tray 60 x 90cm very good clean condition £7.00. Tel: 07934132759

MISCELLANEOUS

PASHLEY ladies bike usual extras shed stored 6 years ride or restore £50 07974822880

STOWAMATIC GTX electric golf trolley brand new battery excellent condition, manual golf trolley in good condition £145 ono for both 01562 825253

WHEELCHAIR in vgc less than 12 months old, hand breaks on push handles 0 7 5 1 8 9 0 2 8 0 4 Kidderminster £55

MISCELLANEOUS

TWO corded hedge trimmers with extension leads in fair condition £10 each 07518902804 Kidderminster

6 x 500 piece jigsaws £10 01562 918917

CHICKEN wire 1 roll as new £10 01562 752278

PLASTIC storage crates large stacking 8 total professional crates £45 01905 428627 evenings

ANTIQUE glass showcase / cupboard 74"H x 48"W Solid pine £175 01905 428627 evenings

MISCELLANEOUS

RALEIGH Trent Tourist gents bicycle 3 speed dynamo, new tyres £120 Bromsgrove. 01527 876942

RUNNER BEAN Plants, £2. for 12 plants 8 ft canes 85p Charentais melon plants £1 each - 01905 778926

FOOTSTOOL from Oak Furniture Land's Malvern range. Light grey colour. Opens up for storage and is a big size. Located in Bromsgrove. £160 07460943678

MISCELLANEOUS

ANTIQUE chest drawer 30"H x 36"W x 16"D wooden knobs £110 01905 428627 evenings

WANTED

RECORDS WANTED

Cash paid

Call Paul or text: 07765 142354 / 01527 893992

Or email: welston@live.com

Paul (Albatross & Doomed Records)

WANTED

WANTED

Motorcycles and Scooters

Any cc, condition or age, good prices paid

07944 781 933 | 01926 257 643

Check out our E-Editions!

Standard
Arts | a spla

Bromsgrove Standard
The Will
Hope the b

Droitwich Standard
P.U.P.
Veter new j

www.redditchstandard.co.uk/editions
www.bromsgrovestandard.co.uk/editions
www.droitwichstandard.co.uk/editions

The same paper you love on your mobile, tablet and computer

Classified

www.directory247.co.uk

TELEPHONE 01527 588688 FACSIMILE 01527 584371

SERVICES

CLADDING/ GUTTERING

My Clean Gutters

100% SATISFACTION

CUTTING FROM **£39**

100% BEST QUALITY

Freephone: 0800 0463373
Birmingham: 0121 652 0374
Redditch: 01527 900 787
Mobile: 07376 915 527

www.my-cleangutters.co.uk
mycleangutters777@icloud.com

DECORATING & PAINTING

DA SMITH DECORATORS

Interior & exterior painting & decorating
Property Repairs

40 years experience

Email: Derekalansmith@live.co.uk

07941 689 655 • 01527 836227

GARDENING SERVICES

GARDENING SERVICES

JFS Garden Services

Fencing, Turfing, Hedge Cutting, Tree Surgery, Stump Grinding, Jungles Cleared, Grass Cutting/Regular Mowing, Domestic, Commercial enquiries welcome.

For a free Competitive Quote

07977 497 440 • 01527 458 104
www.jfslandscapes.co.uk

GARDENING SERVICES

GRASS CUTTING

COVERING REDDITCH, STUDLEY & BROMSGROVE

No job too small
Locally based

Call 07599 270652

GARDENING SERVICES

Dragonfly GARDENING

Specialists in plant care and pruning

- Grass Cutting
- Hedge Trimming
- Regular Maintenance

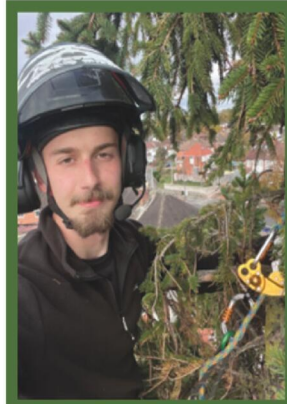
Your local expert plantsman

33 Years Experience in Horticulture with a local major Garden Centre

Registered Waste Carrier
CRB CHECKED • FULLY INSURED

07814 510797
01527 878965

Reliable Friendly Service



JT's Trees & Gardens

Fully Insured Professional Tree & Garden Services
Free In-Person Quotes

Call/WhatsApp@ 07376721401
Instagram: jts_trees

Email: jamietaylor@jstreeandgardens.com

HANDYMAN

LOCAL HANDYMAN AVAILABLE

in Redditch

Good rates offered
Experienced builder by trade

Call Steve on

01527 69309
07541 279957

KITCHENS

S.W INSTALLATIONS

Kitchens & Bathrooms

FREE DESIGN & QUOTATION

QUALITY KITCHENS & BATHROOMS SUPPLIED & FITTED

PLUMBING, CARPENTRY, TILING, WORKTOP & DOOR REPLACEMENT (Supply & fit, supply only or fit only)

LOCAL TRADESMAN 20YRS EXPERIENCE
NO JOB TOO SMALL

07971 684 353

PROBLEM?

NEED HELP FROM A LOCAL EXPERT?

Our Classified pages are full of LOCAL BUSINESSES waiting to help!

Give them a call!

LANDSCAPING

D.A. TAYLOR

LANDSCAPING

Fencing • Slabbing • Conifers
Hedge Work

CLEARANCE

Gardens • Rubbish • Sheds • Large & Small Trees Felled, Lopped and Shaped • Turfing • Shed Base

FREE QUOTATIONS

01527 870914 • 0771 768 2816

PLUMBING

SB 4

Plumbing & Heating

- Gas Fires
- Gas Cookers
- Gas Central Heating and Maintenance.
- Gas Appliance Landlord/home
- Safety Checks.
- Plumbing faults/installation.

Email: stuart4heating@gmail.com
www.sb4plumbing.co.uk
Call me for domestic work

MOBILE 07951 485 329

REMOVALS/ STORAGE

MAN WITH A VAN REMOVALS

House moves local & long distance
Collection and delivery
Single items to full van loads
House Clearances
Collection of unwanted household items

Waste Carrier No: CB0U69835

T:01527 514 666 M:07843 854 289
ManWithaVanRemovalsRedditch.co.uk

BEST LEAVE IT TO THE EXPERTS

Check out our **Classified pages!**

ROOFING

WEATHER GUARD ROOFING PROFESSIONALS

10% OFF ALL ROOFING REPAIRS

No job too big or too small
Fully guaranteed and insured
Written quotes available

Specialists in all types of Roofing, Complete Roofs, Ridge Tiles, Lead Work, Chimneys, Fascias, Soffits, Guttering, Gutter Cleaning

Mobile: 07467 159012
Office: 01527 962 972

info@weatherguardservices.co.uk
weatherguardservices.co.uk

ROOFING

POWELLS ROOFERS & BUILDING SERVICES

- Roof Tiling • Garage Roofs • Flat Roofs
- Chimneys rebuilt and re-pointed
- Garage Conversions • Driveways
- Building Maintenance • Extensions

Powells Roofing & Building Services are a local Redditch based company

C&G Qualified with over 15 years local roofing and building services experience

For more details, please call 07952 797 973 or 01527 454325

SKIP HIRE

A&S SKIPS

A Division of A&S Developments (Redditch) LTD

- 2, 4 & 7 yard skips
- Skips with drop front doors guaranteed
- Prompt and reliable service
- Competitive rates

Tel 01527 459 238 • Mob 07788 112028

www.asskips.co.uk

Waste carrier No. CB0U 169 207

Redditch Skip Hire Ltd

For all your domestic and commercial skip requirements

4-40 yard skips available • Drop fronts - please ask when ordering
Open or enclosed 90% of waste recycled

- No room for a skip. Book our man with a van service
- Prompt, reliable service
- 2 hour arrival slot
- Next day service

Call 01527 63644
Or visit us at: www.redditchskiphire.com
Waste Carrier No. CB0U122354

TREE SURGEONS

TREE & LANDSCAPE Specialists

Tree & Landscape Specialists is a trusted, professional company with a great reputation to uphold and have over 20 years experience in the trade.

- Tree Work • Paving • Fencing • Artificial Grass • Astro Turf • Patios

No job is too big or too small • Fully Insured

Contact us today FREEPHONE: 0800 747 1704 • LANDLINE: 01527 906 577
treeandlandscapespecialists@gmail.com
www.treeandlandscapespecialists.co.uk

WANTED
Motorcycles and Scooters
 Any cc, condition or age,
 good prices paid
 07944 781 933 | 01926 257 643

Standard SPORT



9 772040 128006
 Published by Bullivant Media Group Ltd, Webb House,
 Church Green East, Redditch, Worcestershire B98 8BP
 Printed by Newsquest, Newspaper House, Osney Mead,
 Oxford, Oxfordshire OX2 0EJ

LANDMARK
 LANDSCAPING & DRIVEWAYS
 FREEPHONE 0800 191 0282
 www.landmarkdriveways.co.uk
 Honey Orchard, Doverdale, Droitwich, WR9 0QB
 • Block Paving • Patios • Slabbing • Driveways
 • Tarmacadam • Brickwork • Turfing • Graveling
 • Resin Bond • Paths • Forecourts • Fencing
 All Work Guaranteed for 5 Years - No Deposit Required


www.droitwichstandard.co.uk/sport **BRINGING YOU ALL THE LATEST SPORTS NEWS AND VIEWS FROM THE AREA**

Crowther steps down as Saltmen boss with Townsend to take job

by Aaron Sutcliffe
 aaron.sutcliffe@bullivantmedia.com

FOOTBALL: DROITWICH Spa have appointed Quentin Townsend as the club's new first team manager to replace former boss Andy Crowther.

Townsend returns to the dugout following a six-year stint in charge of Stourport Swifts from 2018 to 2024.

The 49-year-old previously managed Pershore Town from 2015 to 2018 after beginning his managerial career at Southam United.

Townsend guided Stourport to the Worcestershire Senior Cup trophy in 2022/23 for the first time in the club's history.

He also oversaw Stourport's joint best run in the FA Vase after Swifts reached the fifth round of the competition in 2023/24.

The newly-appointed Droitwich boss also led the Walshes Meadow club to a league-high finish of fourth in the Midland Football League Premier Division.

Former Droitwich boss Crowther has stepped down from the role after five years in charge at the King George Playing Fields.

Crowther guided Spa to two promotions and three play-off final appearances during his time at the helm.

He took charge of Spa in more than 200 games and guided the club to the Hellenic League Premier Division play-off final last season.



Andy Crowther departs Spa after five seasons in charge. Picture by Mathew Mason.

A club statement said: "Andy has a fantastic record as a player, assistant manager and in particular as manager.

"He is quite rightly regarded by supporters as a club legend, and will always be part of the Spa family.

"We would like to put on record our gratitude to Andy for his commitment, determination and loyalty to Droitwich Spa and wish him and his family all the best for the future."

MIDFIELDER DEPARTS

Droitwich midfielder Charlie Tilley has also departed the club to join fellow Step Five side Rugby Town.

The 23-year-old helped the Saltmen to promotion in 2024/25 and scored 13 goals last term as Spa suffered defeat in the Hellenic League Premier Division play-off final.

Tilley came through Worcester City's youth system and moved to Droitwich in 2022 where he went on to make more than 200 appearances.

He won Droitwich's managers' player, players' player and supporters' player of the season awards across the last two campaigns.

And Tilley will now make the switch to Bulin Road after Rugby suffered relegation from the Northern Premier League Midlands last term.

Rain denies Spa win against Hagley

CRICKET: DROITWICH Spa CC saw their weekend game against Hagley abandoned due to rain with the home side well on course for victory.

Spa bowled Hagley out for just 111 in 40.4 overs at St Peter's Playing Fields.

And Droitwich reached 56-1 by the end of the 15th over of their reply only for the heavens to open which led to the abandonment of the fixture.

Spa took 12 points from the match and sit third in the Worcestershire County League Division One table.

Droitwich won the toss and elected to field as only Jack Yendall (33), Archie Grimsey (13) and Jacob Ward (13) managed double figures aided by 17 extras.

The pair of Max Young (4-32) and Martyn Davies (4-54) starred with the ball while Flynn Taylor (1-10) and Sam Smith (1-11) also chipped in with wickets.

Spa had Hagley in trouble on 54-6 as wickets fell at regular intervals throughout the innings.

The visitors passed the 100-run mark as

Yendall led a recovery effort in vain with Hagley all out for 111.

Droitwich produced a 53-run first-wicket partnership in reply as captain Davies (37) and Harry Butler (18 not out) put the home side in command.

Davies fell to the bowling of Pray Sangha (1-2) while Jonathan Miles (0 not out) failed to score a run from 15 deliveries.

However, with Spa 56 runs from victory, and with nine wickets and several overs to spare, the rain began to fall with no further play possible.

Droitwich are next in action against Coombs Wood on Saturday, June 13 with play to begin at 12pm (midday) at Stewarts Road.

Elsewhere, the club's second XI beat Hagley 2nds by six wickets at Hagley Park.

Spa bowled Hagley out for 141 in 38.3 overs as four bowlers took two wickets apiece.

Rain meant Droitwich chased a revised target of 123 from 38 overs as opener Kaz Singh (56) scored a half-century to guide Spa to victory in 27.1 overs with six wickets in hand.

LANDMARK
 LANDSCAPING & DRIVEWAYS

- DRIVEWAYS
- PATIOS
- BLOCK PAVING
- TARMACADAM
- FENCING

No Deposits Required
 All Work Guaranteed

www.landmarkdriveways.co.uk

Call Free **0800 191 0282** for a free no obligation quotation. Alternatively, call us on Tel: **01905 886549**



EDWARDS CAR REPAIRS

- Engine tuning
- MOT preparation and submission for final MOT
- Cam belt replacement
- Clutch Replacement
- General repairs
- Welding
- Servicing
- Insurance work welcome
- Supply and fit all parts for all makes & models

All types of work undertaken, why not give us a call or just drop in

Rear of 8 Hewell Road, Barnt Green, Birmingham, B45 8NE
0121 445 5414
 Email - enquiries@edwardscarrepairs.co.uk

