

WANTED
Motorcycles and Scooters
 Any cc, condition or age,
 good prices paid
 07944 781 933 | 01926 257 643

Charity support doubled as more seek debt help

by **Andy Morris**
 andy.morris@bullivantmedia.com

A FREE debt advice charity in Rugby has expanded to double the number of people it can help out of financial trouble, in response to increasing demand.

Rugby Christians Against Poverty (CAP) Debt Centre has appointed Sue Keffler and Mark Richmond as additional Debt Coaches, doubling the number of appointments available.

CAP Debt Coaches meet clients in their homes to help them access services such as those related to transport, physical mobility, health issues, childcare needs, or mental health struggles.

Since opening in 2009, the centre has been contacted by over 400 households seeking debt help and has seen steady growth in the number of people seeking help with their financial issues.

Rugby CAP Debt Centre Manager Karen Swaffield said: "It has been wonderful to be able to help so many families and individuals go debt free.

"Over the years, we've seen the need for free debt help grow in Rugby and we want to be able to help as many people as we possibly can.



"Now, with the addition of Sue and Mark to the team, it's great to be able to offer more support for local people."

Sue said: "I just love this area, I love Rugby and I love its people. I want to give something back and the CAP Debt Centre gives me a

chance to do that. I can work with people and walk with them as they see real change and a way out of debt.

"I know how difficult managing finances can be for us all, particularly at the minute with high prices, and especially if someone

is also struggling with other challenges like ill-health, bereavement or unemployment."

The charity is highlighting the devastating impact of debt as new Opinium polling reveals nearly 10million UK adults are struggling to repay their debts.

Rugby CAP Debt Centre Manager Karen Swaffield (left) with new Debt Coaches Sue Keffler and Mark Richmond.

Karen spoke about the heart-breaking circumstances that can lead people to seek help.

She said: "Some may think people just get into debt because of overspending on luxuries, but that isn't the reality for the people we're helping at CAP Rugby.

"Most people who come to us are overwhelmed by problem debt because of a change in circumstances that has caused a drop in their income.

"They may have lost their job or be unable to work because of their health, or they have to care for a loved one. They may have experienced a relationship breakdown, or their partner may have passed away and now they're relying on a significantly reduced income.

"It takes tremendous courage for someone struggling with debt to reach out. Some are ashamed to admit they are in debt, others are afraid of the unknown and may be wary of seeking debt help.

"But we want to assure people that we are here to help and can offer them free practical debt advice, and provide holistic support."

Visit www.capuk.org/help or call 0800 328 0006 free of charge to find out more CAP's services.

Contact Karen Swaffield at rugby@capuk.org to directly support Rugby CAP Debt Centre.



Tel: 0800 3032559
Mob: 07773 911552
www.drives4u.co.uk

Are you looking to improve or enlarge your driveway or patio?

We can provide you with a beautiful new patio or driveway in Coventry, Bromsgrove, Redditch, Solihull or Birmingham

5 Year guarantee

- We've designed and built just about every shape and size of driveway and patio you can imagine, so we will not be phased by your project.
- We strive to achieve 100% satisfaction and unlike other driveway companies, with us you pay absolutely nothing upfront.
- Give us a call and you could save upto £1000

Tel: 0800 3032559 | Mob: 07773 911552 | www.drives4u.co.uk

Event gives its support to Safeline

RUNNERS are being called to line up for Leamington half marathon, in aid of Safeline.

The run returns for its eighth year on June 15 and participants can choose to enter the race for free by committing to raising £100 for the charity dedicated to preventing sexual abuse and supporting those affected.

A portion of the race profits will also be donated directly to Safeline to fund ongoing support for individuals and families.

And on race day, there will be a Kids Mile, a free event where children can participate in a fun run and receive a medal at the finish line.

Jamie Connolly, managing director of race sponsors Thomas Flavell & Sons, said: "We are extremely pleased to be sponsoring the run for the second time.

"Last year's event was fantastic, with a great atmosphere and many spectators cheering on the runners.

"I hope to participate in the half marathon myself this year, but we'll see how the training goes. Otherwise, I'll definitely be taking part in the Kids Mile with my daughter."

Event manager David Poole added: "We have an amazing team of volunteers who ensure race day runs smoothly, but we are always looking for more people to help. If you'd like to get involved, simply email office@raceways.org.uk."

For more details and to book a place visit www.leamingtonspahalfmarathon.co.uk

Mum aiming to set new world record

A MUM-OF-TWO from Warwick hopes to set a new world record when she runs the London Marathon in a very special costume.

Stephanie Taylor, who was diagnosed with asthma as a child, aims to be the first female to run the marathon on April 27 dressed as medical equipment – in her case, an inhaler.

Stephanie admits she didn't take her condition seriously until she got Covid in May 2023 and had her first asthma attack.

The 30-year-old was finding it hard to breathe so decided to go to the hospital walk-in centre to get checked out.

Stephanie was diagnosed with pneumonia and admitted to hospital. A series of scans revealed her right lung was 70 per cent full of fluid,

by Philippa Mingins

due to infection which was causing her breathing difficulties and chest pain. She was given intravenous antibiotics and after ten days in hospital Stephanie was finally sent home.

She said: "Afterwards my asthma was a lot worse. I started to experience asthma attacks for the first time, which I had never had before, and it was frightening.

"During the first month after coming out of hospital, I had to go to A&E twice because I was struggling so much to breathe. I'd get a tight chest and start wheezing and coughing and finding I couldn't catch my breath. It was so scary."

To get her asthma under control, Stephanie went to see a nurse at her GP practice for a review. She

was given a preventer and reliever inhaler with advice on how to use them.

Stephanie continued: "It was a real wake-up call. I hadn't taken my asthma seriously before, but now realised I should have. Ever since then I have used my inhalers properly which help."

In fact, Stephanie wanted to raise awareness of the importance of using inhalers properly so much, she decided to run the London Marathon dressed as one. She will also be raising cash for Asthma + Lung UK.

Stephanie will be running in a costume which her two daughters Hanna, aged eight, and Eleri, aged six, helped her to make.

She added: "We got a big box that was left over from Christmas and shaped it, then put some support on the inside using my kids' dress-up scarves. Finally, we wrapped it in



Stephanie tries out her inhaler costume.

plastic backing to make it slightly waterproof and attached the roof of the inhaler to put my head into. I have already been for a few practice runs wearing it to get used to it. It is quite light so comfortable to wear."

To donate visit join.aluk.org.uk/fundraisers/StephanieTaylor

Two Castles ready to run at full capacity as 4,000 sign up

THE TWO Castles Run is fully booked for a second year running.

A total of 4,000 runners have signed up for the 10km run between Warwick and Kenilworth castles on Sunday, June 8.

All this year's places were snapped up within a month, and runners who missed out on a place are being invited to join the waiting list.

The event is organised by the Kenilworth Runners in conjunction with Kenilworth Rotary and Leamington Cycling and Athletics

Club, and is being sponsored once again by Leamington Spa solicitors Blythe Liggins.

Richard Clarke, race director from the Kenilworth Runners, said: "Last year's Two Castles Run had a fantastic atmosphere, being our first to be fully booked since the pandemic, so it's wonderful news that this year the event will once again be at full capacity.

"Over the next couple of months, we will be working on all of the planning and organi-

sation that makes the event possible, and we look forward to welcoming our 4,000 runners on the day."

Donna Bothamley, partner at Blythe Liggins Solicitors, said: "There was a great community spirit at last year's run, and we're delighted that this year's event will be fully booked once again.

"We look forward to cheering on the runners as they take on the route between Warwick and Kenilworth castles, raising funds for a range of worthy charities in the process."

Visit www.two.castlesrun.org.uk for further details.



A Blythe Liggins team will be lacing up their running shoes again for this year's run.

AFFORDABLE EXTERIOR CLEANING



FREE MOSS TREATMENT

- Commercial Buildings
- Home, Driveways, Decks & Patios
- Soft Wash & Chemical Application
- Wall & Render
- Repointing / Grouting
- Roof Cleaning
- Free Quotes
- 10% Off for New Customers

Professional Pressure Washing Service



CONTACT US
07474 139014

© bark 2021

Bible Talk

Resurrection and judgment to come

Hear what the Bible has to say (God Willing)

Sunday 13th April at 3pm

Barnacle Village Hall, Lower Road, Barnacle, Warwickshire, CV7 9LD

Or view live online Zoom ID : 852 9390 2690
us02web.zoom.us/j/85293902690

W: www.christadelphians.co.uk
E: info@christadelphians.co.uk P: 0800 144 5556



PUBLIC NOTICES

For all your latest information on Planning Proposals, Traffic Notices, Goods Vehicle Operator Licences, Licences To Sell Alcohol and Probate Notices...

See page **31**

Feel the love in new arts festival

A NEW cultural festival celebrating the arts, heritage and sport in Rugby will make its debut this summer.

The Love Rugby Festival – a spiritual successor to the Rugby Festival of Culture – aims to create the borough's very own summer of love with a programme of live music, theatre, art, heritage and sport.

Rugby Borough Council has unveiled a Love Rugby logo to launch the new festival which, the council says, aims to create a sense of pride, boost footfall in the town centre and celebrate the borough's diverse communities.

The Love Rugby Festival is set to be held from Sunday June 16 to Friday July 6, coinciding with Rugby School's Festival on The Close and Warwickshire Open Studios' annual Summer Art Weeks

by **Andy Morris**
andy.morris@bullivantmedia.com

festival. In addition to the programme of cultural and sporting events and activities, the festival includes a 'couch to 5k' fun run through the town centre, finishing at Whitehall Recreation Ground.

Coun Maggie O'Rourke, the council's spokesperson for partnerships and wellbeing, said: "Rugby has a proud tradition of support for the arts, culture and sport, and Love Rugby celebrates the very best of the borough and what makes us who we are."

"The Love Rugby Festival picks up the baton from the Festival of Culture which ran successfully in the town for many years, and by expanding its remit to include sport and wellbeing, we can also support improved mental and physical health.



Spreading the love - Coun Neil Sandison and Coun Maggie O'Rourke unveil the logos to launch the Love Rugby Festival.

"I look forward to seeing how the festival develops over the next few years.

"Rugby's residents reflect many different traditions and cultures, with a host of different backgrounds, but our love of Rugby unites us all."

Her Liberal Democrat counterpart Coun Neil Sandison added: "Let us know what you

most love about Rugby's arts, heritage, sports and culture. We'd love to know which local events or business best reflect your love of Rugby and its communities."

To encourage participation, the council plans to offer grants of up to £250 for community groups to organise festival events and activi-

ties, while community sports clubs are set to be offered up to £500 each to host taster sessions or open days.

The council plans to announce the full festival line-up and more information about the grants online at www.rugby.gov.uk/loverugby once details have been finalised.

Biker is killed in A45 crash

A MOTORCYCLIST died in a crash near Rugby on Monday (March 31).

The motorcyclist, a man in his 40s, sustained serious injuries after the crash on the A45 Daventry Road near Dunchurch just after 5.15pm and was pronounced deceased at the scene. His next of kin has been informed.

A West Midlands Ambulance Service spokeswoman said: "When ambulance staff arrived at the scene, they found bystanders caring for a motorcyclist, a man, who had reportedly left the carriageway and collided with a tree.

"The team of medics worked to administer advanced life support to the man. Tragically, despite their best efforts, nothing could be done to save the man, and he was confirmed deceased on scene a short time later."

Anyone who witnessed the collision or has any dashcam footage from the area is asked to call Warwickshire Police on 101, quoting incident number 263 of March 31.



Smoke billows from Hunters Lane Recycling Centre.

Advice after recycling centre fire

A FIRE at Rugby's recycling centre sent a plume of black smoke into the sky last week.

Firefighters were called to Hunters Lane Recycling Centre at around 2pm on Thursday March 27 after a skip containing small electricals caught fire.

Warwickshire's Fire and Rescue Service (WFRS) arrived swiftly and the fire was extinguished by 3pm.

Warwickshire County Council's (WCC) Waste Recycling Team paid tribute to WFRS's quick response.

The fire is believed to have been caused by incorrectly disposed items.

Andrew Pau, Warwickshire County Council's head of waste and country parks, said: "This incident at Hunters Lane serves as a stark reminder of the dangers of incorrectly disposed batteries and other hazardous items. It's crucial that

residents understand the correct way to dispose of items like batteries, vapes, and electricals to prevent future fires and ensure the safety of our recycling centre staff and the wider community.

"We urge everyone to utilise the dedicated facilities provided at our Household Waste Recycling Centres (HWRCs) or through other designated collection points."

The council advised residents to call the fire service on 999, keep their distance, stay indoors and shut their windows if they see smoke from a recycling centre.

The council said fires at recycling centres and in kerbside bins were most often caused by the following items, and advised how to dispose of them correctly.

* **Vapes** - Do not put in any kerbside bin. Every HWRC in Warwickshire has a dedi-

cated container for vapes, or return to the vendor

* **Batteries** - Do not put in a kerbside bin. Some local councils do take at the kerbside when presented in a separate bag on bin day. Every HWRC in Warwickshire has a dedicated container for batteries. They can also be disposed of in dedicated containers at many larger supermarkets and electrical retailers

* **Electrical and electronic items** - Do not put in a kerbside bin. Some local councils do take at the kerbside when presented in a separate bag on bin day. Every HWRC in Warwickshire has a dedicated container for waste electricals. They can also be returned to electrical retailers

* **Hot ash, cinders, coals or disposable BBQs** - Do not move or put in any bin until cold. Speed up cooling by using cold water.

Trustpilot

Reader travel

EDINBURGH, STIRLING FALKIRK WHEEL & THE KELPIES
Departing Mon 19 May '25

From our base in Edinburgh, we enjoy a boat trip on the nearby Falkirk Wheel, a unique feat of modern engineering and visit the breathtaking equine sculptures known as The Kelpies. We also discover Stirling and have the opportunity to visit Perth.

Your break includes

- ✓ Return coach travel from Rugby, Coventry
- ✓ 4 nights at the Britannia Hotel, Edinburgh (JG2 rating) with dinner & breakfast
- ✓ Falkirk Wheel boat trip
- ✓ Excursions to Stirling, The Falkirk Wheel & The Kelpies

Optional excursion to Perth (£14pp)

ABBA VOYAGE LIVE IN LONDON
Departing Fri 22 Aug '25, Sun 26 Oct '25

Have you always wanted to experience the magic of an ABBA concert? Well now is your chance to say Thank You for the Music! Join us at the ABBA Arena for the incredible ABBA Voyage; where the global pop icons appear on stage as digital avatars brought to life.

Your break includes

- ✓ Return coach travel from Rugby, Coventry
- ✓ Overnight stay at a selected hotel (JG3 or JG4 rating) with breakfast
- ✓ Ticket to ABBA Voyage at the ABBA Arena with coach transfers (dancefloor, standing)
- ✓ Free time in London for shopping & sightseeing

Upgrade to a seated ticket for £30pp

5 Days by Coach only £349 Single Supplement: £100

2 Days by Coach only £249 Single Supplement: £60

Coach package holidays are operated by & bookings made subject to JustGo! Holidays terms & conditions which can be found on our website. Your booking is protected by Bonded Coach Holidays (BCH) and the Association of Bonded Travel Organisers (ABTO). Buses offered subject to availability. Fees and commissions recognised. Prices per person, based on two people sharing a room, a small number of children under 16 require a supplement. Calls to 0333 numbers are free within inclusive minutes packages otherwise standard rates apply. Prices are correct at the time of printing and will be honoured for bookings made on or before 7 days after publication. Prices after this date are subject to fluctuation.

For more information, or to book, please call

03332 342 514 Quote **OSG**

or visit us online at justgoholidays.com/OSG

0333 numbers are free within inclusive minutes packages otherwise standard rates apply.

Firms call for Gibbet Hill upgrade

by **Andy Morris**
andy.morris@bullivantmedia.com

DELAYS caused by a major bottleneck between Rugby and Lutterworth are costing businesses time and money, a new report says.

Firms and major employment hubs in the area have outlined ongoing frustration regarding daily congestion at the A5/A426 Gibbet Hill junction.

The roundabout, which connects the A5, M1 and M6, is used by the area's many logistics and freight businesses.

In a new report published by Midlands Connect, local businesses and major employment hubs including DIRFT and Magna Park have given overwhelming support for government investment in improvements to the junction, saying it is critical to the future of the 'Golden



Logistics Triangle'. Companies said regular delays are hampering the efficient movement of goods, while others have suggested it could be damaging the area's appeal as a hub for business.

The 'Golden Logistics Triangle' is one of the UK's premier logis-

tics hubs, but the report outlines that firms feel its economic growth potential could be stifled without government investment.

The Department for Transport's spending portfolio is currently under review, and local firms are urging the government to prioritise

Delays at the Gibbet Hill junction between Rugby and Lutterworth are costing businesses time and money.

upgrades to Gibbet Hill.

Rugby MP John Slinger said: "The area around Rugby is home to a wide range of major national and international firms, employing tens of thousands of local people, and playing a major role in our local economy."

"We must not lose sight that transport accessibility is a critical reason for why these firms choose to locate here."

"This report by Midlands Connect highlights that these firms are facing severe challenges at the Gibbet Hill junction."

He said investing in the junction would help firms to operate more efficiently, while also easing frustrations for communities.

He added: "The logistics sector has become a vital part of the local

economy, helping to coin the area as the 'Golden Logistics Triangle'. But to maintain this status, it is critical we remain an attractive location by providing an efficient and reliable local transport network.

"For our region to continue to attract investment and benefit from the economic growth potential of the sector, our infrastructure must grow alongside it, starting with Gibbet Hill."

Swati Mittal, the Integrated Transport Programme Lead for Midlands Connect, added: "We are working to highlight the need for critical upgrades to this important junction in our strategic road network."

"These first-hand experiences of the congestion really demonstrate the need for improvements at Gibbet Hill. We will be submitting this fresh evidence to government in the coming days."

Bearing fruit—A new orchard has been planted in New Bilton.



Orchard scheme keeps on growing

A PROJECT to plant community orchards is bearing fruit in Rugby.

The latest community orchard at Freemantle Play Park in New Bilton brings the total planted by Warwickshire County Council (WCC) under its Fruitful Pursuits initiative to 23.

The scheme is designed to create sustainable green spaces while also com-

memorating the Coronation of King Charles III.

The planting has been a collaborative effort involving community group volunteers and partner organisations, with expert guidance from WCC's assistant ecologist Tara Higgs.

WCC's communities spokesperson Mark Ryder said: "This is a fantastic opportunity for communities to come together and

create a lasting legacy for future generations.

"The orchard will provide a beautiful space for residents to enjoy while contributing to a more sustainable Warwickshire."

"It reflects our commitment to enhancing biodiversity, improving air quality, and creating a county that is not only beautiful but also resilient and sustainable."



For success in business and peace of mind in life – our legal experts are there to guide and support you at every step.

We can help you with:

- Notary Services
- Property disputes
- Employment Issues
- Buying & Selling Property
- Tax Planning & Trusts
- Planning
- Court of Protection
- Wills & Estates Administration
- Real Estate
- Family Law
- Corporate & Commercial
- Dispute Resolution
- Personal Injury & Clinical Negligence
- Business Turnaround
- Debt Recovery
- Contentious Probate

Your legal partner
for life and business

Visit www.wilkes.co.uk or call **0121 733 8000**
for more information

Skydome installs life-saving kit

NEW DEFIBRILLATOR and bleed control kit cabinets have been installed at Coventry Skydome with support from a Warwickshire charity.

The cabinets have been installed after support from the OurJay Foundation, Coventry Business Improvement District (BID) and Coventry Skydome. It means potentially life-saving equipment will be available for use on the external concourse at the Skydome.

The OurJay Foundation was formed in memory of 18-year-old Jamie Rees, who passed away after a cardiac arrest in 2022.

Naomi Rees-Issitt, Jamie's mum and chair of the foun-

ation, said "We have had a great response to the campaign in Warwickshire but now we are looking to expand the number of defibrillators in Coventry.

"The defibrillator installed at the HMV Empire has been triggered eight times since it was installed and the bleed kit there has saved a life."

Jamie was a regular visitor to Coventry city centre and enjoyed ice skating at Planet Ice in the Skydome.

The OurJay Foundation has now installed more than 240 accessible defibrillators around the UK in Jamie's memory with hopes to continue expanding.

Coventry BID manager

Joanne Glover said: "It's absolutely vital that we have life-saving equipment available at key locations in Coventry.

"The equipment will be on standby 24/7 and ready to save lives, allowing people to act quickly if required in an emergency. We are pleased to have been able to work in partnership with the Skydome and OurJay Foundation to make this possible."

Liz Middleton, operations manager at Coventry Skydome, said: "We hope that we will never have to use the equipment, but it gives us and our communities peace of mind to have the lifesaving equipment on site, should we ever be in that situation."



The new defibrillator and bleed cabinets have been installed at the Coventry Skydome. s

Headliners will hit the right note for Godiva Festival

by Andy Morris
andy.morris
@bullivantmedia.com

MARC Almond, Clean Bandit and Ocean Colour Scene are set to headline this year's Godiva Festival.

Across the weekend of Friday July 4 to Sunday July 6, War Memorial Park will play host to Coventry's flagship event with a line-up covering genres from pop to rock and two-tone to hip hop.

Headlining the Main Stage on the Friday will be Marc Almond, best known as the vocalist of Soft



Richard Ashcroft performing at last year's Godiva Festival.

Cell, who rose to prominence with the worldwide hit Tainted Love. Selling more than 30 million records worldwide, Marc cemented his solo career with number one

hit Something's Gotten a Hold of My Heart.

Joining the Main Stage for the 80s and 90s night will be synth-pop band Heaven 17, plus soul singer and M People vocalist Heather Small.

Multi award-winning band Clean Bandit will headline the Main Stage on the Saturday.

The chart-topping band, known for their songs Rockabye, Symphony and Rather Be, will close the Saturday night of the festival with a live music set. The band have had four number one singles, as well as a Grammy and an Ivor Novello award.

Getting the crowd ready for the headliner on Saturday will be popular DJ Nathan Dawe, hip hop duo Young T & Bugsey, as well as the Panjabi Hit Squad who will bring hip hop, Bollywood and bhangra anthems.

Coventry musical legend Neville Staple, one of the founders of The Specials, will also take to the Main Stage on the Saturday.

Completing the headline acts is Ocean Colour Scene, who will bring the festival to a close on the Sunday evening. The rock band, formed in Birmingham in 1989, are known for their hits The Day We Caught the Train and The Riverboat Song.

Joining the band on the Main Stage will be Rick Parfitt Jr & The RPJ Band and Yolanda Brown: Bob Marley Songbook. Dance group Diversity will be making a return to the Main Stage after they last performed at the event in 2023.

Coun Abdul Salam Khan, Coventry City Council's Deputy Leader and Cabinet Member for events, said: "This year's line-up sees international superstars taking to our stages at the War Memorial Park in Coventry alongside some of the city's up-and-coming finest musical talent.

"As always, our line-up is diverse and covers a broad range of genres. We have something for everyone - there's music, performers, activities and outdoor entertainment.

"Events such as Godiva Festival rely on the incredible support of those who purchase tickets and attend. By coming along and enjoying what's on offer, you're playing a vital role in securing its future at a time when festivals across the UK are facing challenges.

"The festival is incredible value for money with ticket prices frozen for 2025. Godiva Festival gives residents the opportunity to see top acts at just a fraction of the price when compared to similar events."

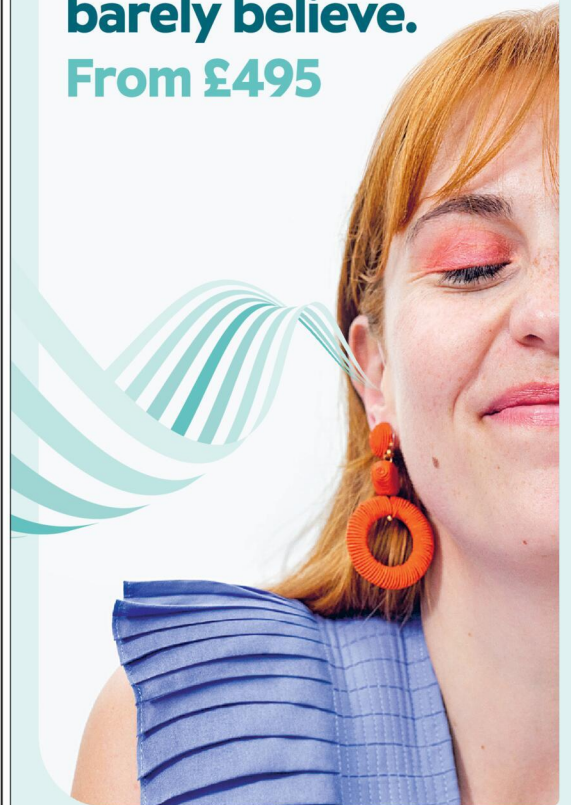
The Cov Stage will serve as the secondary stage in the music field at this year's event. The stage will host local Coventry talent plus other acts.

The Godiva Festival Family Field will feature live entertainment and interactive activities.

For more information and tickets visit www.godivafestival.com.

Hearing devices you can barely see at prices you can barely believe.

From £495



OK hearing is not OK

Book a free hearing check at specsaunders.co.uk/hearing

Conditions apply.

Specsaunders

[bargains_from_yesteryear](https://www.instagram.com/bargains_from_yesteryear)

BENN Hall, Rugby
Newbold Rd CV21 2LN

Rugby Antiques, Collectors & Vintage Fair
Sunday 6th April
Open 9:30 – 4pm
FREE Sunday Parking
£1.50 Adult Adm.
Refreshments Available

Enquiries 01827 895 899
bargainsfromyesteryear.com
Followed by Sunday 4th May '25

Legion hosts VE Day event

A COMMUNITY event in Hillmorton will mark the 80th anniversary of VE Day.

The Hillmorton branch of the Royal British Legion (RBL) decided to hold an evening event on the anniversary as it falls on a working day - Thursday May 8.

The event, 'An Evening With Hillmorton's Vera Lynn and Friends' - which will follow a short service of remembrance at the Hillmorton War Memorial - will have a 1940s theme. It takes place at the Hillmorton Ex-Servicemen's Club at 8pm.

Branch chairman Kathryn Lawrence said: "It is a real community event with the involvement of RBL branch members, the Rotary Club of Rugby Dunsmore, The Ukrainian Choir, the Phoenix Ukulele Band and Hillmorton Ex-Servicemen's Club."

Free trees offer

HUNDREDS of residents from the Lutterworth area have claimed a free fruit tree to mark the 80th anniversary of VE Day.

Harborough District Council gave away around 1,700 apple, cherry, pear and plum maiden trees to help promote environmental sustainability and improve community engagement across the district.

The council will be giving away more free fruit trees on Friday (April 4) at Welland Park in Market Harborough, subject to availability. The trees are bare-rooted and need to be planted within 24 hours of collection.

Lottery cash will help to save history

A PRICELESS 100-year trove of material charting the development of adult education in Rugby has attracted a grant from The National Lottery Heritage Fund.

The grant of more than £20,000 will enable Rugby's Percival Guildhouse to collate, catalogue, digitise and display its records - which reveal how it has developed and reflected changes in society locally and nationally since it opened in 1925.

Until now, material including course programmes, play scripts, diaries and minutes of meetings has lain undocumented in boxes in the basement of the St Matthew's Street Centre.

Guildhouse trustee Liz Pichon, who is leading the archive project, said: "It was only when we started to look through some of the boxes that we realised what treasures we possessed.

"We consulted the National Archive at an early stage and they confirmed that we had material of national significance. But we had neither the means nor the finances to transform our treasure into something useful.

"Working closely with various

by **Andy Morris**
andy.morris@bullivantmedia.com

expert advisers, we put together our successful bid to The National Lottery Heritage Fund.

"National Lottery players' support means that we can now not only preserve all we have for posterity but create a searchable historic resource which can be used by schools, local historians and people who are simply curious about the past."

Liz and fellow Guildhouse volunteers Steve Becker and Peter Harris began sifting through the material.

With confirmation of the grant, work has now begun to scan and catalogue all material so the oldest and most fragile items can be digitised professionally to protect the archive for future generations.

A website is also being created to give the public easy access to the archives.

Liz added: "The archives tell many different stories about the Percival Guildhouse and its wider contributions to the heritage of Rugby and surrounding districts

"We are planning a series of Heritage Forums for the general



Liz Pichon, the Guildhouse Trustee leading the archive project, with fellow project volunteer Steve Becker.

public at Rugby Art Gallery and Museum (RAGM) to give wider access to this heritage and help people to engage with six main themes relating to the history of the Guildhouse: the Foundation, Courses, Activities, Significant People, Debates and the Guildhouse Players."

Chair of trustees Rob Close added: "The Percival Guildhouse Archive reveals the rich contribution the Guildhouse has made to

local adult education - as well as its wider contribution to adult education in this country, to the visual and dramatic arts, and to enhancing the lives of many through its forums, clubs, debates and other activities since its inception in 1925."

The public can see what the archive has to offer by visiting the Percival Guildhouse Arts and Archive Exhibition at RAGM from June 4 to 16.

PRESTIGE DENTAL CARE
THE GENTLE DENTAL CENTRE

**ACCEPTING NEW NHS PATIENTS
EMERGENCIES THE SAME DAY**

- Open till late and weekends
- Multi lingual teams (polish, romanian, arabic, mandarin)
- Male and female clinicians
- Nervous patients welcome
- 0% finance available
- Invisalign clear aligners from £2,300 per arch
- Dental implants from £1,800 per tooth
- Modern equipment and techniques

Prestige Dental Care
1-5 Church Way,
Bedworth, CV12 8NA



NHS

**Invisalign
clear aligners
from £2,300
per arch**

**Modern
Equipment
and
Techniques**



**Dental
implants
from £2,800
per tooth
inc Crown**

Telephone: 02476 314912 | 02476 319008
Website: <https://gentledentalcentre.co.uk>

3 taxis removed from streets in safety campaign

by Philippa Mingins

THREE taxis have been taken off the road following vehicle safety checks.

Warwick District Council (WDC), along with the Driver and Vehicle Standards Agency (DVSA) and Warwickshire Police, recently carried out inspections of the district's private hire vehicles.

A total of 48 licensed vehicles were inspected to ensure they were safe and legal. In addition, vehicles that are approved to carry passengers in wheelchairs were inspected to ensure that not only were they safe, but that the driver was confident in supporting wheelchair users to access the vehicle.

The inspections found three vehicles to be at fault, with the vehicles immediately removed from the road.

Faults included tyre tread below the minimum and defective break lights. One driver was breathalysed after alcohol was found in their vehicle but they were not



The inspections led to three taxis being taken off the road.

found to have any alcohol in their system.

Three further vehicles were also issued delayed prohibition notices by DVSA meaning they had ten days to rectify issues and present for another MOT.

Of the remaining 42 vehicles, ten had minor licensing infringements which will be followed up by licensing officers.

WDC's safer communities spokesperson Coun Jim Sinnott said: "I would like to express my thanks to the council's licensing team, the DVSA and Warwickshire

Police for carrying out this essential activity.

"Taxi drivers play an important role in providing transport to those that need it, so it's vital that they keep their vehicles safe and legal, protecting both their passengers and the wider community."

"The council takes its licensing responsibilities seriously and will not hesitate to take action to guarantee the public's safety."

Barford-based healthcare company Wenmans provided a wheelchair as part of the operation.

Appeal to find men after crash

POLICE have released CCTV images of a group of men they would like to speak to about a non-stop crash near Long Itchington which left a young moped rider seriously injured.

It happened on the A423 Southam Road at the junction with Stockton Road at around 10.45pm on February 1, and involved a moped and a car.

The moped rider, a 17-year-old boy, suffered serious injuries which required hospital treatment.

The car, reported to be a blue Ford Fiesta, left the scene in the direction of Coventry. It was later found abandoned with considerable damage.

Warwickshire Police want



Police would like to speak with these men.

to speak to the men in the CCTV images as it's believed they may have helpful information.

Anyone who recognises

them or has any information on the collision should visit warwickshire.police.uk/ro or call 101 to report it.

'Proud moment' for new recruits

THE NEWEST recruits have been welcomed to Warwickshire Police.

Seventeen new police constables had their attestation ceremony at the force's headquarters in Leek Wootton.

The ceremony is when new police officers take an oath, which is set within legislation, to serve the monarch in the office of constable. New officers promise to uphold the key

values and principles that are expected from all working within Warwickshire Police including fairness, integrity, diligence and impartiality.

Now they have sworn the oath, the new recruits have been granted their policing powers, including the power to arrest.

Ch Con Alex Franklin-Smith said: "I am proud to officially welcome our new officers to the

Warwickshire Police family. They have been through a rigorous selection and training programme and are now ready to work hard preventing and fighting crime to keep our communities safe, while always putting victims first.

"This ceremony is a proud moment in their lives and I look forward to seeing them in their new endeavours across the county."

Step Into Spring

at the garden lovers' garden centre

Farnborough Garden Centre
Harefurlong Nurseries

www.farnboroughgardencentre.co.uk

A traditional garden centre that focuses on providing quality plants, garden products, homeware and gifts

national
Garden Gift
voucher

STARTER PLANTS

HERBACEOUS PLANTS

SPRING BEDDING

SUMMER BULBS

Treasured Teddies

AT
FARNBOROUGH GARDEN CENTRE

Come & visit our Treasured Teddies shop & see our massive selection of cuddly collectables & furry friends including especially loveable limited editions and everyday huggables

A world of *Choice*

OPEN 6 DAYS A WEEK
Tues-Sat 9-5.30pm
Sun 10.30-4.30pm
Open Bank Holiday Mondays

On A423 Southam Road,
Nr Farnborough, Banbury, OX17 1EL
Tel 01295 690479
customersales@farnboroughgardencentre.co.uk

WHERE THINGS FOR YOUR GARDEN WON'T COST YOU THE EARTH

'Exemplary' Nicola takes award

A DEDICATED woman who followed her dream to become a Nursing Associate by studying at Coventry University while her mum was being treated for cancer has won an award for her 'unwavering commitment' to her apprenticeship.

Nicola Peach has received the university's Endeavour Award – given to students who exhibit exceptional dedication and go above and beyond in their studies – having qualified with flying colours.

Nicola had worked in the NHS for around eight years before deciding to pursue the Nursing Associate programme at the university in 2023.

The next two years of study came at the same time her mum was battling cancer, meaning a fine balance

by **Andy Morris**
andy.morris@bullivantmedia.com

ing act between work, study and home life.

Nicola, who works at George Eliot Hospital NHS Trust in Nuneaton, said: "I was truly shocked but proud to receive this award. I have loved every minute of my studies and the team I worked with were brilliant and so supportive."

"I left school 30 years ago so to even get through the first year was an achievement."

"I sent my mum a piece I had written and she asked which article I was referencing, and I explained that I had written it – she couldn't believe it! She can't wait to come to my graduation."

"I also want to thank the Acute Medical Unit (AMU) team and the



Nicola Peach received Coventry University's Endeavour Award for her 'unwavering commitment'.

cess began a decade ago when she started a job in a doctor's surgery before becoming a ward clerk across various departments at George Eliot. It was during her time in the AMU that Nicola found her calling in patient care.

Driven by a desire to do more, she moved into a Healthcare Support Worker role, overcoming challenges with the help of the hospital's education team. Nicola successfully completed the necessary courses, including her Care Certificate, to qualify for the position.

Karen Heywood, course director for Nursing Associates Apprentices at Coventry University, said: "Nicola is receiving this recognition due to her unwavering commitment to

her course, her career and her support to others. Despite having some challenging times, Nicola has continued to dedicate herself to her apprenticeship for two years.

"Her attendance at university has been exemplary and her professional approach to her learning is a personal triumph but she has also represented George Eliot Hospital and the values they expect from their employees."

"Nicola was a pleasure to teach and her learning and personal journey is something I am proud to have been part of. As a course team we wish her every success in her future career."

Katie Wood, Senior Sister on the AMU at George Eliot, said: "We are so proud of Nicola. She is a wonderful colleague who always goes the extra mile for both her colleagues and patients."



Staff and students celebrate Coventry College's new Ofsted rating.

Ofsted praise for college's good progress

'THRILLED' staff at Coventry College have welcomed a 'good' rating following its latest Ofsted inspection.

Following a previous 'requires improvement' grading by the schools' watchdog in 2023, the college implemented a strategy centred on maintaining strong finances to invest in the curriculum, as well as 'fostering a culture that delivers excellence'.

Inspectors highlighted 'significant progress', commending the college's commitment to high-quality education, student well-being and a positive learn-

ing environment. They singled out the college's quality of education, curriculum, teaching and learning environment for praise.

Principal Carol Thomas said: "We were thrilled to receive a 'good' rating across all areas in this long-awaited and highly anticipated Ofsted inspection. It marks a huge step forward in our transformational journey."

"Inspectors recognised a significant culture shift, particularly in learner behaviour and engagement. In just four years, our staff have driven remarkable change, and you can feel the difference

the moment you walk into the college.

"This success is a collective achievement, and I want to thank everyone who made it possible."

"Moving forward, we will continue to improve and provide high-quality education. As the Ofsted report states, 'Coventry College enhances the life chances and career opportunities of Coventry residents,' and that is something we are really proud of."

Visit <https://reports.ofsted.gov.uk/provider/31/130472> to read the full Ofsted report.



School Holiday Swimming Lessons NOW Available

@ Bilton Grange School,
Rugby Road, Dunchurch CV22 6QU

JKM

Swim School



3 Years to Pre competition standard



Private Lessons on a 1:1 or 2:1 basis



Teachers with considerable experience



National Teaching plan stages 1-10



3 day crash courses available

Book NOW to avoid disappointment

EASTER AND MAY HALF TERM SESSIONS AVAILABLE

For more information please contact Debbie



07824 813156

e: admin@jkmwarwickshire.co.uk



Find us on Facebook:
JKM Swimschool

www.jkmwarwickshire.co.uk

MP highlights issues of fake fire certificates

FALSE fire safety certificates issued in the wake of the Grenfell Tower tragedy are leaving residents unable to sell or insure their flats.

by Philippa Mingins

MP Matt Western said a number of people in his Warwick and Leamington constituency had raised issues they were having, including being unable to sell or insure their homes due to their safety certificates turning out to be false.

Mr Western has since raised what he has called the 'scandal' of false fire safety certificates in Parliament and called for an official register of these certificates.

Fire safety certificates are also known as ESW1 certificates and were first introduced in 2019 after the Grenfell Tower fire in London which killed 72 people in June 2017.

An ESW1 form is required

by most banks and building societies when determining whether to lend money on flats in apartment blocks. The form evaluates the fire risk of a building by considering its overall construction and assessing any cladding.

Last month, it was reported nationally that an engineer had been accused of signing off ESW1 certificates using the credentials and signature of another engineer without permission.

The Institution of Fire Engineers (IFE) has been investigating Adam Kiziak, whose company is called Tri Fire, for potential malpractice. He was suspended by the IFE last August.

Various lenders have withdrawn mortgage offers to people who were attempting to purchase flats with ESW1s issued by Tri Fire.

In the Commons, Mr

Western said "tens of thousands of homeowners are affected" by false ESW1s and that their homes are now "uninsurable and unsaleable".

The leader of the house, Lucy Powell MP, responded that the "government is taking these issues incredibly seriously" and said she "will ensure there is ample time for the house to debate these matters."

Mr Western added: "I have heard firsthand from residents how false ESW1s have left them feeling completely and utterly stuck, unable to sell their home and unable to insure it. Some have already lost thousands of pounds from property sales which have fallen through."

"Shockingly, over seven years on from the Grenfell Tower tragedy, the systems in place to try and prevent such a horror happening again are being manipulated, leaving thousands in an awful situation."

Handler's praise for much-loved PD Kuga

TRIBUTE has been paid to a Warwickshire Police dog who passed away from an injury received while saving someone's life.

Last December, Kuga helped the force find a vulnerable missing person who was severely injured and losing blood.

Though he found the missing person in time, he injured his paw, and that led to the discovery of a condition that caused him chronic pain.

After months of trying every treatment possible, on veterinary advice, the decision was taken to let Kuga rest. He went to sleep peacefully with his handler Lucy and previous handler Mark at his side.

Lucy said: "Kuga was a force to be reckoned with and you usually heard him before you saw him."

"Formidable and headstrong, he knew what he liked and if he didn't like it he wasn't doing it."



Tribute has been paid to "brave, strong and loyal" Kuga.

"He was brave, strong and loyal and with him by your side you knew everything was going to be OK."

"I'd like to thank him for looking after me

and Mark. Even when he was in pain, he never faltered. It was never meant to end like this, he was so loved, and we are going to miss him so much."

News and sport online: coventryobserver.co.uk

SPRING SALE

Lots of other Spring Sale Offers in Store - Amazing selection to choose from

REGAIN YOUR INDEPENDENCE AND FREEDOM



MOBILITY SCOOTER

- 4mph boot scooter
- Easily transportable
- Up to 10 mile range
- Up to 20st user weight
- Airline friendly batteries

SAVE
£300
WAS £799.99

NOW
£499.99

Only 1 Scooter per Customer and this offer is only valid till 30th April 2025



02476 630444

7 Sherbourne Arcade, Lower Precinct, Coventry CV1 1 DN (opposite 'Home Bargains')

Pictures for illustration

www.maxmobility.co.uk

Prices with VAT Exemption

The Bilton Grange pupils who achieved music scholarships this year.



MUSICAL SUCCESS: A RECORD number of music scholarships have been awarded to pupils at a preparatory school near Rugby. Nine pupils at Bilton Grange Preparatory School in Dunchurch have been awarded scholarships to four of the UK's top independent schools - Downe House, Stowe, Repton and Rugby. It is the highest number of music scholarships ever achieved in one year at Bilton Grange - where more than 230 music lessons are scheduled at each week, and more

than 60 per cent of the pupils learn to play at least one instrument. Head teacher Gareth Jones said: "This is a huge achievement and I am very proud of the children and our dedicated team of music staff. "But it's not only been a record year for music scholarships. Our sixth formers have achieved a total of 34 scholarships this year, spread across the curriculum to include academic, music, drama, sport and swimming awards."

Revealing the past is object of exhibition

A NEW exhibition at Rugby Art Gallery and Museum will offer a window into the town's past and reveal the origins of the borough's social history collection. Collecting Rugby, part of Rugby Art Gallery and Museum's 25th anniversary programme, traces the collection from its humble beginnings at Rugby Library in the 1890s to the present day, where it now houses thousands of items with links to the borough's past. Originally an ad hoc collection of artefacts started by staff at the town's library, the social history collection started in earnest when Rugby Art Gallery and Museum first opened its doors in 2000, with residents and borough businesses donating the vast majority of items. Collecting Rugby features a selection of artefacts collected in the late 19th century, including a brass firefighter helmet, a farmer's smock and a children's doll manufactured in 1850. Historic objects donated to the collection over the past 25 years also feature in the exhibition, exploring the themes of personal, working, domestic and community life. A railway whistle and a sign from the British Thomson-Houston works represent Rugby's industrial growth in the 19th century, while a Foxley pocket watch manufactured in the town and a bracelet worn at the borough's celebrations for Queen Elizabeth II's coronation in 1953 capture a snapshot of everyday life.

A needlework basket from 1880 and a tea box made by Rugby company Lavender and Harrison give a glimpse of life behind closed doors, while a cup and saucer from the Long Lawford Women's Institute and a Rugby Cycling Club badge celebrate the borough's thriving community of clubs and organisations. Collecting Rugby also celebrates Rugby Art Gallery and Museum's 25th anniversary, with the drawings for the venue's original archaeology gallery, featuring the collection of artefacts from Tripontium, and social history space when it first opened in 2000 included in the exhibition. Catherine Shanahan, Rugby Art Gallery and Museum's senior collections officer, said: "The social history collection includes thousands of fascinating objects, some symbolic of significant chapters in the borough's history while others reflect on the everyday lives of residents through the decades. "Each item has a story to tell and Collecting Rugby celebrates the story of the collection itself as we celebrate the Art Gallery and Museum's 25th anniversary." Collecting Rugby opens at Rugby Art Gallery and Museum's local history gallery on Wednesday April 9 and runs until Saturday October 4. Visit www.ragm.co.uk for more information about Rugby Art Gallery and Museum's 25th anniversary programme of exhibitions and events,



SIMPSON
FINANCIAL SERVICES

Get ready for retirement

Whether it's one year away or ten, retirement is a big (and often daunting) new chapter in your life. How much money do you need to reach your retirement goals?

We can help you answer that question.

Get expert advice from an award-winning local independent financial adviser now.

0800 6342 111
office@simpsonfs.co.uk
www.simpsonfs.co.uk

Follow us    

Find out more 

THE BED FACTORY

SPECIALISTS IN BEDS AND MATTRESSES FOR PEOPLE WITH BACK, SHOULDER OR HIP PAIN.

SALE NOW ON

The Harrison Handmade Beds

KING FOR DOUBLE
on all complete beds from Harrison.



Complete Range of Harrison FR **Chemical Free** Beds on Show

Special Price Ottoman

FREE HEADBOARD



Single £449 • Double £499
King £599 • Super King £699

Sutton Wooden Frame Hand Made Frame



Single £339 • Double £419
King £469 • Super King £589

1 WEEK DELIVERY ON ELECTRIC BEDS

FREE AT HOME SELECTION AVAILABLE



5 POINT MASSAGE MATTRESS NOW AVAILABLE TO TRY IN STORE.

We are specialists in electric adjustable beds and have A Large Selection Available Starting From £999

Avon Fire Side Chair



£669.00

Special Edition 2 Drawer Bed Set

FREE HEADBOARD



3'0 was £449 now £389
4'6 Was £599 now £499
5'0 was £699 now £599

Bedroom Furniture

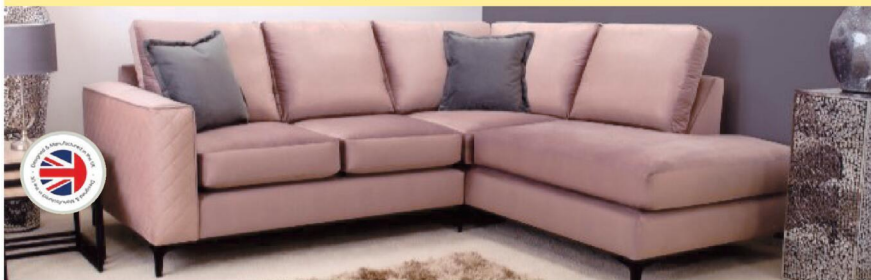


Full Range of Bedroom Furniture Available

Celebrity studio in store



Corner Group
WAS £1,499 NOW £1,299



Top Floor full of Sofas & Sofa Beds

| | | | |
|-----------------|--------------------------|--------------|------------------|
| Mattresses | Support Chairs | Beds | Sofas |
| Riser Recliners | Electric Adjustable Beds | Corner Sofas | Headboards |
| Chests | Wardrobes | Pictures | Mattress Toppers |
| Lamps | Pillows | Duvets | Z Beds |

Leamington's Largest Independent Bed Retailer

We can supply a large range of beds in 1 to 2 weeks - 3' Single Beds also available - WE SUPPLY WHEN OTHERS FAIL

139 Regent Street, Royal Leamington Spa, CV32 4NX

01926 422404

sales@thebedfactory.co.uk
and www.thebedfactory.co.uk

Trustpilot ★★★★★

Appealing for more volunteers

A CHARITY which helps families with young children in the Lutterworth area is looking for new recruits.

Home-Start South Leicestershire is looking for new volunteers to take part in its annual eight-session preparation course, which takes place within school hours starting on Wednesday April 30.

The charity supports families facing difficulties as new parents, or with complex situations in their lives ranging from financial crises, isolation and loneliness, managing mental or physical ill health, and living with disabilities and long-term conditions.

Charity Manager Stella Renwick said: "Warm, non-judgemental emotional and practical help is central to the services given.

"Families are under increased strain currently, with the cost-of-living crisis and welfare reform, which further compounds the stresses involved in raising children, especially in those crucial early years.

"The help given by volunteers is bespoke to each family based on their individual circumstances. So, you could be going for a play in the park with the children, helping the family get out to the library or be a listening ear to a parent feeling stressed.

"We need volunteers from a range of backgrounds because we have lots of different families, and a suitable match of family to volunteer is crucial. We're hoping to attract more male volunteers this year, as they are currently under-represented in our charity and an absent positive role-model in many families."

The charity encourages applications from anyone with a couple of hours a week to spare, personal experience of parenting, and who is interested in making a new connection to help a local family.

Full training is provided, as well as ongoing support and occasional social events to meet other volunteers. Visit www.home-startsouthleics.org.uk, email info@home-startsouthleics.org.uk or call 01858 467982 for more information.

New kit promotes sense of hope for young team

A 'BOOST of pride' has been given to a Rugby boys' football team who are hoping to defy expectations in search of promotion.

Bilton Ajax Under-14s Whites, who play in the Northampton and District Youth Alliance League, have been able to ditch the bibs they had to wear for away matches thanks to a new sponsorship deal.

They have teamed up with diamond drilling specialists D-Drill, the side's new away kit sponsor for the remainder of the 2024-25 season.

Head coach Duncan Manley said the team, which is in its first season and in the midst of an unlikely playoff push, had been playing their away matches in bibs before the new away kits - which feature the D-Drill logo on a Coventry City-inspired shirt - arrived.

He said: "We were at a point where we were feeling quite well established after a great start to the season, but we were having to play our away matches with bibs on, which isn't ideal.

"Having this support from D-Drill has given the players an enormous boost of pride - and even better that we are in the sky blue so many of our followers have an affinity with.

"We owe a huge debt of thanks to D-Drill, and we are hoping the



Bilton Ajax Under-14s in their smart new away kit.

new kit will spur us on to give it our best for the remainder of the season."

Duncan's son Max, 13, was on the lookout for a new club after his old side folded, when the opportunity for Duncan to take over a team training at Bilton School came up.

Duncan said: "We started with a draw and were soon on a five-game unbeaten run. We were initially hoping to be competitive but soon found ourselves

fourth out of 11, and looking up the table rather than down, which is really exciting for the players.

"It's been amazing to how the group has grown week by week. It's such a fantastic team and we have a brilliant set-up with great support from parents.

"There is a really strong community behind the club, and this additional support plays a huge part in making matchdays and training high quality, positive

experiences for our players - and it feels like we are in a great position as a result of it."

Julie White, managing director of D-Drill & Sawing, said: "We are extremely excited to be supporting Bilton Ajax.

"It's a fantastic community club which is giving lots of local youngsters a great footballing experience, and we wish them the best of luck for the final weeks and months of the season."

10 YEARS WARRANTY ON SHUTTER BLINDS



**BRIXHAM
BLINDS**

Residential and Commercial
www.brixham-blinds.co.uk

Quality made to measure blinds by an established blind company you can trust



Available in beautiful and stylish Hard Wood and Faux Wood

Contact us today for a
FREE no-obligation quotation

Tel: 02476 666686

Visit us at: 21 Brixham Drive, Coventry, CV2 3LA

Email: info@brixham-blinds.co.uk

Website: www.brixham-blinds.co.uk

WE WILL BEAT ANY LIKE FOR LIKE QUOTE

Classic tale of enlightenment comes to town

ONE of the most celebrated comedies of the 20th century opens at Rugby Theatre this weekend.

Willy Russell's iconic play *Educating Rita* runs at the Henry Street venue from April 5-12.

The story introduces us to Rita, a brash, working-class, Liverpudlian hairdresser who dreams of breaking free from her mundane life. Rita signs up to attend an Open University course and meets Frank, a disillusioned poet and borderline alcoholic. Although initially sceptical, Frank agrees to tutor Rita, leading to a life-changing journey for both characters.

The show's director Nigel Nicholson said: "Audiences will identify with Rita because she has a dream. Her dream is to gain knowledge, and to become what she sees as a more informed and intelligent person.

"She's also struggling with societal expectations placed on women, in particular the constant pressure to have children. I don't think those expectations have gone. They might be better hidden these days, but they are still there. Rita wants to break that mould."

With local actors Suzanne Swan and Malcolm

Stewart taking on the roles of Rita and Frank, the story emphasises the deep connection between these complex characters, exploring themes of class and gender stereotypes, personal growth, and the power of education, all wrapped in a witty and poignant narrative.

Nigel added: "What I love about Willy Russell is his wit. He knows how to write a one-liner.

"Even though I know the jokes are coming they still make me laugh, and that's how you know you've got good writing - because the jokes are equally funny on the second hearing.

"Educating Rita remains one of the most celebrated plays of the 20th century. It's a brilliant exploration of the transformative

power of education and how one person's ambition can reshape the lives of everyone around them.

"We are thrilled to bring this iconic play to life at Rugby Theatre this April."

Visit www.rugbytheatre.co.uk or call 01788 541234 for tickets.

Malcolm Stewart as Frank and Suzanne Swan as Rita. Picture by Martin Pulley.



Harris students performed for residents of Overslade House on World Theatre Day.

CURTAIN UP: THE STAGE was set at a Rugby care home when students from Harris Church of England School helped residents celebrate World Theatre Day.

The pupils visited Overslade House to perform poetry including Shakespeare's famous Sonnet 18, songs by the Beatles, and self-composed songs performed on piano.

The home's Activities Co-ordinator Julie Bateman said: "Our residents all love the theatre and are so knowledgeable about different plays and musicals.

"We all enjoyed sharing our favourite passages from plays and reminiscing about our trips to the theatre. We have also been lucky to watch live theatre shows in the home from

The Barn Theatre and also A Christmas Carol live from the Old Vic on our large screen.

"We look forward to seeing Harris students in July who will perform songs from the Bugsy Malone musical."

Violetta Baesu, General Manager at the home, added: "It was a brilliant day and our residents all enjoyed listening to the students and swapping stories about their favourite trips to the theatre and the wonderful productions they have seen over the years in different theatres all over the world.

"Some of our residents acted in their younger days, so it was lovely to hear all about the various parts they had played."



OUR BIG SALE IS STILL ON

OPEN 7 DAYS CV6 5EY

INFLATION EVERYWHERE - BUT NOT AT CARPET MILL!

Everything is going up in price, the same for Carpets and this is why it pays to go to Carpet Mill. Manufacturers of yarn and other materials for making carpets have all had price rises and some manufacturers are busy changing their specifications to many ranges to compensate. They also get surplus rolls that they cannot sell to the big stores as they don't have enough stock left to service them.

Therefore, we are buying those rolls at a **FAT DISCOUNT** and passing it on to **YOU**.







BRAND NAME CARPETS AT LOW LOW PRICES

CARPET MILL

CROMWELL STREET (OFF RED LANE) COVENTRY CV6 5EY TEL: (024) 7666 1985

SOME CUSTOMERS TRAVEL MILES - YOU DON'T HAVE TO - WE ARE HERE

www.salecarpet.uk





Thomas, Lord Leigh of Stoneleigh, (1594–1671). Picture by Lampport Hall.

LOOKING BACK: WARWICKSHIRE Local History Society's next evening talk will be on the Leigh Family.

"Caring for the Community: The Leigh Family's Legacy" will be delivered by chair of Stoneleigh History Society Sheila Woolf at Aylesford Primary School in Warwick on Tuesday April 15.

Her talk will explore the Leigh family's care for the people of Stoneleigh and how the Leighs' benevolence shaped the village, from the church and almshouses to the school, club, inn, and even a workhouse.

Attendees will also be able to learn about the enduring relationship between Abbey and village, from Sir Thomas Leigh's arrival in the 16th century to the Second World War.

The talk will start at 7.30pm with tea and coffee served from 7pm. It will be preceded by a short AGM at 7.15pm. There is no need to book. Non members are welcome and attendance is free. For more information visit www.warwickshirehistory.org.uk

Chance to explore the history of pre-history

A PIONEERING fossil hunter is in Warwick.

The Market Hall Museum is hosting the Mary Anning Maquette, the original clay model of a new sculpture honouring Mary Anning, a palaeontologist whose discoveries of ichthyosaurs, plesiosaurs, and other fossils on the Jurassic Coast revolutionised the field.

The unique exhibit, on loan from the Charity and Trustees of Mary Anning Rocks!, will live in Mary's home town of Lyme Regis in Dorset following its country-wide tour, but for a limited time visitors to the Market Hall Museum will have the chance to see it up close and to celebrate Anning's remarkable contributions to science.

At the same time, visitors can explore the fossils found in Warwickshire, which would have been just like those discovered by Anning.

Warwickshire was once under the Jurassic Sea and currently on display at the museum is a display of ichthyosaur skulls discovered in local quarries in the Victorian era.

Warwickshire County Council's environment spokeswoman Heather Timms, said: "It's fascinating to learn about the connections between



LEFT: A portrait of Mary Anning by an unknown artist, before 1842. RIGHT: The Mary Anning Maquette.

Warwickshire, the museum collections, and Mary Anning, the world's most famous fossil hunter. Her maquette will be at the Market Hall until July and

will be in good company among a display of some of the museum's most treasured Jurassic fossils'.

To celebrate the Mary Anning statue coming to

Warwickshire, a series of fossil themed events are also planned to take place at Market Hall Museum. Visit heritage.warwickshire.gov.uk for full details.



It's time to feel good about care

With award-winning not-for-profit care homes, longer trial stays and Home for Life funding assurance.

Finally, care that feels good to Mum. And to you.

Arden House
18-20 Clarendon Square
Leamington Spa
01926 353 649

greensleeves
care



**Practice Plus
Group Hospital,
Birmingham**



Regulated by CQC



Hospital Group of the Year '23



Service provider for NHS

No NHS waiting lists, get your surgery sooner

At Practice Plus Group Birmingham, we offer NHS funded surgery with no waiting lists. If you are facing long delays, ask your GP for a referral to us and get the care you need, faster.*



**Your NHS, your choice where you are seen.
Speak to your GP today.**

- NHS-funded treatment
- No waiting lists
- High-quality care



For more information or guidance, call us on **0121 756 5058**
or visit practiceplusgroup.com/birmingham

*Please note, appointments for NHS patients are subject to availability.





The PCC is calling for at least 150 more police officers on the beat in the West Midlands.

Call for extra officers

THE WEST Midlands Police and Crime Commissioner (PCC) is calling for at least 150 more police officers in the region.

Simon Foster has written to the Home Office to apply for more officers to be allocated to West Midlands Police.

The application is part of the government's Neighbourhood Policing Guarantee, a £100-million pledge that will aim to deliver 13,000 extra officers out on the streets to deal with local issues.

Mr Foster said: "I have applied for 150 additional police officers, as part of the government's Neighbourhood Policing Guarantee, so that I can continue to rebuild neighbourhood policing in the West Midlands.

"This is particularly important for the West Midlands, because our Force still has about 700 fewer police officers and about 500 fewer PCSOs than we had in 2010, despite the deep and inexcusable unfairness of many other police force areas having more police officers than they have ever had in their force histories.

"These 150 additional police officers are essential, to fulfil my commitment to continue rebuilding neighbourhood policing.

"We need an accessible, reassuring and visible presence out on the streets to prevent and tackle crime, promote community safety and keep the people, families, businesses and communities of the West Midlands safe and secure."

Justice, safety and security on list

THE POLICE and Crime Commissioner (PCC) for the West Midlands has set out his vision for the next four years.

Simon Foster launch his Police and Crime Plan which outlines a vision to deliver justice, safety and security across the region.

The Plan, developed after consultation with residents of the West Midlands, prioritises rebuilding community policing, preventing and tackling serious youth violence, including knife crime and violence against women and girls and improving road safety.

The PCC says the Plan reflects his commitment to confronting and addressing the most pressing challenges faced by the West Midlands.

The key priorities includes working with partners to prevent and

tackle youth violence and knife crime in the region, rebuilding community policing and working with partners to prevent and tackle Violence Against Women and Girls.

Mr Foster says he will also dedicate significant time and resources, to ensure the rights and welfare of victims are always at the forefront of policing and the wider criminal justice system, with partners complying with the requirements of the Victims Code.

The Police and Crime Commissioner prepares and issues the West Midlands Police and Crime Plan, sets the police budget and police precept and holds the



Chief Constable and West Midlands Police to account on behalf of the people.

He also invests more than £22-million on delivering services that prevent crime, promote community safety and support victims and sur-

vivors of crime.

That includes \$6.7million, supporting victims and survivors of crime, immediately following their becoming victims and throughout their recovery journey.

This might be victims of domestic abuse, violence, modern slavery, stalking, burglary, roads crime, any crime reported to the police or bereaved families of victims of crime.

The PCC also oversees the \$5.8m investment for the Violence Reduction Partnership, a body which aims to prevent and reduce violence, by early intervention, diversion and addressing the underlying causes of violence.

Mr Foster said: "This comprehensive Plan represents my vision for justice, safety and security in the West Midlands.

"It includes my commitments to continue to re-build community policing, to prevent and tackle violence against women and girls, youth violence and knife crime and to reduce the number of people killed and seriously injured on our roads.

"I am committed to constant and unremitting action to prevent and tackle crime, promote community safety and keep the people, families, businesses and local communities of the West Midlands safe and secure."

To view the plan visit the PCC's website.



Truth Recovery Independent Panel
Seeking the Truth

The Truth Recovery Independent Panel, appointed by the Executive Office, is carrying out an independent investigation into **Mother and Baby Institutions, Magdalene Laundries and Workhouses in Northern Ireland from 1922 - 1995**, and their related pathways and practices, including the adoption and care systems.

If you would like to share your experience, please get in touch by Thursday 1st May 2025.

We wish to hear from:

- ✓ Any person who has been directly impacted
- ✓ Relatives of those directly impacted
- ✓ Any person who has worked or volunteered in, or lived in close proximity to one of these institutions
- ✓ Any person who experienced forced family separation in a private nursing home or private home

Contact us:

- 📞 **Phone us on:** 028 9052 0263
- ✉ **Email us at:** testimony@independentpanel.org.uk
- 📍 **Write to us at:** Truth Recovery Independent Panel, 4th Floor, Equality House, 7-9 Shaftesbury Square, Belfast, BT2 7DB



KINGHAMS
AUCTIONEERS • VALUERS

Designer Goods & Antiques Valuation Day

Thursday 10th April 11am to 2pm in Dorridge



A Hermes Birkin 30 Handbag.
SOLD for £15,000

Handbags & Other Designer Goods, Antiques, Paintings, Watches & Silver

at The Meeting Room, Dorridge Village Hall
Grange Road, Dorridge, Solihull, B93 8QA

Home Visits. Estate Clearance. Downsizing Advice. Probate & Insurance Valuations.

Contact: **Adrian Rathbone 01608 695695**
adrian@kinghamsauctioneers.com

Head Office: 10-12 Cotswold Business Village, Moreton-in-Marsh, GL56 0JQ
www.kinghamsauctioneers.com

SPRING HAS SPRUNG GODIVA CARPETS SPRING SALE IS NOW ON

To view the finest 'FLOOR SHOW IN TOWN'

with LUXURY at every day prices to put a SPRING in your step

Pop in to see their extensive range of Carpets, Wooden Flooring, Vinyls, Laminates and Rugs all at

DISCOUNTED PRICES

that will suit every pocket and every budget

Top Brands to order, and over 200 rolls in stock, that are ready to go now. Remnants from only £5

No 'APRIL' fooling around..

Our Customers love our Service, Prices, Free Planning and Measuring Service and you will too!

You can order now for delivery and fitting before Easter



Because Godiva Carpets have been fitting carpets and flooring in homes and businesses across Coventry and Beyond for over 70 years, they have tremendous buying power, which means they can offer you

LOW, LOW Prices, allied to GREAT, GREAT Service

Whether you are looking to make your rooms beautiful with a touch of class, or if you are looking for something cheap and cheerful at Godiva Carpets & Flooring

'We've got you covered'

Top Quality Wilton Royal to Branded Room size remnants to clear and ready to go
(No reasonable offer refused)

Landlord deals from only £24!



OUR NORMAL OPENING HOURS ARE
9AM TO 5.30PM MONDAY TO SATURDAY
(CLOSED ON SUNDAYS)

02476 551200

GODIVA CARPETS LTD, ARGYLE HOUSE, COLLINGWOOD ROAD,
EARLSDON, COVENTRY CV5 6HW

VISIT OUR ONLINE STORE WWW.GODIVACARPETS.CO.UK



Brintons

CAVALIER
FLOORING SYSTEMS

Lano
Carpet Solutions

Penthouse
Carpets

ABINGDON

INVICTUS
www.ulstercarpets.com

ulster
The original and the most popular easy-clean carpet

WILTON ROYAL

AND MANY MORE LEADING BRANDS

GODIVA CARPETS

A family business trading since 1953



DISCOUNT CARPETS

OPEN 6 DAYS A WEEK



With over 3000 samples to choose from and prices from only **£8.99sqm**. Choose from stunning colours or patterns

- * Top Brands
- * Easy Cleaning
- * Durability
- * Luxury Piles/Twists
- * Landlord Deals
- * Full House Discounts



WHY PAY MORE

- * EXPERT ADVICE
- * FREE ESTIMATES
- * PROFESSIONAL FITTING

FAST TURN AROUND

RCN
BEDS & FURNITURE
 Henley Rd,
 Coventry CV2 1AB
02476 603254

ADJUSTABLE BEDS

Available in all sizes in a choice of **comfort levels and styles**



RECLINERS

Ease your joint pains. Find the **perfect position** for you! With prices from **Only £699**

FAST DELIVERY

~ ~ comfortmatters.co.uk ~ ~

Your Comfort is Our Priority



Hollie-mae is calling on Silhillians to put their best foot forward in the fight against MND. Picture by Marcus Mingins 1924003MMR www.buyphotos247.com

Step forward to join Matt's Run

KIND-HEARTED residents are being urged to put their best foot forward on Saturday (April 5) in honour of a former Coventry Rugby Club player.

Matt's Run 2025 will feature a 3km walk/run at the Old Silhillians Rugby Club on Warwick Road in Knowle, with participants raising funds for the Matt Gallagher Foundation.

The foundation was set up in honour of the Solihull resident who was diagnosed with motor neurone disease (MND) in 2023.

Despite the devastating diagnosis, Matt has confronted the challenge with positivity and determination.

Along with his family, Matt is focused on raising awareness about MND and providing immediate support to those affected, particularly in the West Midlands.

Since its establishment, the foundation has raised more than £600,000 and has supported 35 West Midlands families living with MND

by Sarah Mason
 sarah.mason
 @bullivantmedia.com

through funding home adaptations and helping create cherished memories.

The foundation collaborates with other MND charities, including the MNDA and My Name5 Doddie, to further its mission.

Matt, a former professional rugby player with Coventry, has used his connections and current role in the land and planning industry to rally support for the cause.

His commitment to fighting MND extends beyond fundraising; he is dedicated to fostering hope through research and providing vital support to those living with the disease.

Matt's Run 2025 is part of a series of events aimed at engaging the community and raising awareness about MND.

The foundation also hosts an annual ball, which raised an impressive £330,000 in 2024. This year's ball will

take place on May 3, continuing the foundation's work to support MND families and advance research efforts.

Hollie-mae Gallagher, the charity's manager, said: "All proceeds are dedicated to supporting those living with MND in our community."

"It's about more than just fundraising; it's about instilling hope and making a real difference in the lives of MND warriors."

"Matt's courage in the face of a terminal diagnosis has inspired many, and the event is a reflection of the growing support for the foundation."

"The 3km walk/run will unite people in the fight against MND, and participants will join Matt in his mission to improve the lives of those affected by the disease."

Registration for Matt's Run 2025 opens at noon and the event begins at 1pm.

For more or to sign up visit www.donate.giveasyoulive.com/charity/the-matt-gallagher-foundation-limited/event/matts-run.

Minister salutes school's eco efforts

by Aidan Kilcullen

ECO-FRIENDLY students at St Gregory's Catholic Primary School have been praised for their efforts by Mary Creagh, MP for Coventry East, during a visit.

Ms Creagh spoke to the children about her role as the Labour Minister for Nature.

She answered questions from the school council and spoke with year six pupils who had written to her last November with questions about environmental problems such as littering.

She also talked about the importance of younger voices being heard on environmental issues, having herself grown up and gone to school in Coventry.

Ms Creagh said: "It was inspiring to see how pupils at St Gregory's are already



Coventry East MP Mary Creagh visited St Gregory's School

thinking about ways they can improve their communities - whether that's through encouraging people to walk to school, supporting local charities, or having a say over the healthy choices in the school canteen.

"I was particularly impressed with the role the

school council plays in making the community a better place for all pupils."

St Gregory's School principal Megan Scullion said: "We were delighted to host Mary Creagh to hear insights from her role in Parliament and how she has been supporting our community."

Russell Lane

The Jewellers of Warwick

Sell your gold in any condition

IMMEDIATE CASH OFFER

No appointment necessary



REPAIRS AND JEWELLERY VALUATIONS

From ring sizing and rhodiuming to replacing missing stones, all work undertaken.

Website: www.russell-lane.co.uk

Tel: 01926 494 494 | Email: sales@russell-lane.co.uk

2 High Street, Warwick CV34 4AP

Couple celebrating 61 years of marriage

A DOTING Rugby couple have celebrated going one better than their diamond wedding anniversary.

Les and Elly Williamson, who live at Overslade House care home, have celebrated 61 years of marriage with family and friends.

The pair, who were born in Scotland, met when Les was a patient at the hospital where Elly worked as a nurse, and love blossomed.

Elly was brought up on a farm in Scotland. She loves animals, and the couple often helped their daughter Fiona with her horses at the stables.

Les worked in agriculture and in later years was an engineer at

by **Andy Morris**
andy.morris@bullivantmedia.com

Chrysler and Cummings, the job which brought them to Rugby.

Elly worked at St Luke's hospital as a nurse, and also as a manager at The Mini Fryer and Elizabeth The Chef's bakery.

Les enjoyed fly fishing on the lochs with his Uncle Bob and also enjoyed canal trips. He was also a steward at the Coventry Bees speedway racing stadium.

When asked the secret of a happy marriage, Elly said: "We just rub along well together – always have and always will."

Family and friends came to

Overslade House to celebrate the couple's special anniversary with staff and residents. Their daughter Fiona arranged a party at the home, complete with a cake and buffet made by the home's chef.

Overslade House senior general manager Violetta Baesu said: "It is so lovely to be celebrating with two of our lovely residents, who are able to celebrate their 61 years of marriage in our home with friends and family, and we hope that we helped to make this a very special occasion for them."

"Congratulations to Les and Elly on their anniversary. It's so wonderful to see two people still very much in love after all these years."



Elly and Les celebrated their 61st anniversary at Overslade House.



The Bloxam Room is open to the public on Sunday (April 6).

Town's Registration Office to host open day

PROSPECTIVE couples are invited to an open day at Rugby's Registration Office this weekend.

Registrars will be on hand to answer questions and provide more information during the open day at The Bloxam Room on Sunday (April 6) from 11am-2pm.

The Bloxam Room can provide seating for up to 50 guests for different types of legal ceremonies, including

marriages, civil partnerships, the renewal of vows, and naming ceremonies.

The recently updated ceremony room offers disabled access, features original furniture from when it served as the town council meeting chamber, and has adjacent gardens for photo opportunities.

Registration service manager Charlotte Matty said: "The next open day at The Bloxam

Room in Rugby is a wonderful opportunity for couples to meet our Registration Services team and to discover the possibilities of what this lovely bright ceremony venue has to offer.

"Warwickshire Registration Services really understands the importance of delivering the best service for your special day, and we look forward to meeting with current and prospective couples to discuss

your ceremony plans." Visit <https://ceremonies.warwickshire.gov.uk/bloxam> room for more information on The Bloxam Room. Visit <https://ceremonies.warwickshire.gov.uk> for more on Warwickshire Registration Services. Email registration@warwickshire.gov.uk to contact Registration Services to discuss a new or existing wedding ceremony in Warwickshire.

Questions about care? We can help

We know moving into residential care is an emotional and difficult decision with lots to think about.

With over 30 years' experience, we can help you navigate the process of finding the right care home, so that you feel confident about the decision you make – whether that's choosing a WCS Care home, or one outside our group that's more suited to your needs.

If you've got questions about care, or one of our care homes, our Trusted Advisors can help.



Philip Rainsford



Drovers House, Rugby
☎ 07802 728447
✉ p.rainsford@wcs-care.co.uk



Westlands, Rugby
Dewar Close, Rugby
☎ 07802 728443
✉ j.rugg@wcs-care.co.uk



Josephine Rugg

Awards night celebrates outstanding achievements

'OUTSTANDING achievements' of businesses, community groups and individuals in Coventry and Warwickshire have been celebrated at a major new event.

The inaugural Coventry and Warwickshire Business and Community Awards, developed by Coventry and Warwickshire Chamber of Commerce, took place at Coventry's Belgrade Theatre.

Coventry-based NP Aerospace took home The Global Player award in recognition of its overseas success, while Nuneaton Signs picked up The Equality Trailblazer prize.

The Workforce Developer award went to Nuneaton-based Independent Freight Solutions, and Warwick Conferences was handed The Planet Saver award.

Coventry IT firm SolaaS won The Rapid Riser prize, while Coventry BID landed The Problem Solver award.

Creative agency Blunt & Brave won the award for The Creative and Culture Activator. The Community Champion prize went to the Sri Lankan Street Food & Cafe.

The Not For Profit Champion went to mental health and wellbeing service Guardian Ballers, before Rachel Ollerenshaw took home the only individual award of the night - The Inspirational Individual.

Corin Crane, chief executive of the Coventry and Warwickshire Chamber of Commerce, said: "I



The winners of the inaugural Coventry and Warwickshire Business and Community Awards.

am so proud of everyone involved because this event started with an idea only a few months ago to put on an awards show that captured everything that is great about our region.

"We wanted it to be a proper celebration of Coventry and Warwickshire - its businesses, community groups and people - and for everyone to come and have

a great night.

"Thankfully, it delivered everything we hoped for and more - and we're already thinking about next year's event.

"Huge congratulations to all of our amazing winners, as well as to everyone who was shortlisted for an award, for helping to make it such a night to remember.

"Also, a big thank you to our

sponsors and everyone at the Chamber, the Belgrade and elsewhere who helped to pull such an amazing event together.

"If we needed any reminding about what a special place Coventry and Warwickshire is to live, work and do business, this event did that in abundance and showed us all what an incredible place this is."

Parents set to hear place results

NATIONAL Offer Day is approaching for parents in Warwickshire who have applied for a primary school place for their child this September.

They will get news of their child's place for either reception or year 2 of junior school on April 16.

And as with the Secondary National Offer Day earlier in March, Warwickshire County Council will automatically accept school places on behalf of each family on this day. This means that parents and carers don't need to take any additional action but wait to hear from their new school.

Johnny Kyriacou, Director of Education at Warwickshire County Council, said: "Starting school for the first time is always a big milestone for every child and their family, as is moving from an infant to a junior school. We always try to make this process as easy as possible, so parents and carers can log onto our Parent Portal on Wednesday April 16 to see where their child will be going in September.

"As usual, we will automatically accept the place on their behalf and this way, parents and carers have less work to do, and it allows us to focus more of our time on placing children in schools."

On receipt of their school place, only those families who have alternative plans for their child need to contact the admissions team. Details on how to do this will be included in their letter.

Visit www.warwickshire.gov.uk/primaryplace for more information.



Nature Trails
Day Nursery and Preschool

Nursery Places Available

Availability may be limited in certain age groups or booking patterns

FOR CHILDREN AGED 6 WEEKS TO 5 YEARS
OPEN 8.00AM TO 6.00PM

Please call
01788 815445 or email
naturetrails
@childbase.com

Nature Trails Day Nursery, Cawston Farm House, Coventry Road,
Cawston, Rugby, Warwickshire, CV22 7RY

We look forward to
hearing from you

www.childbasepartnership.com

"This is the second time round we have used Nature Trails with our children. All of the staff and team are lovely and very caring. They support the children so well and genuinely care for them. My son has come on leaps and bounds since starting there and would like to go every day if he could."

Parent, www.daynurseries.co.uk



Fun is an essential ingredient at Nature Trails Day Nursery and Preschool where the care and education opportunities for each and every child are as extraordinary as our colleagues who provide them.



Financial challenges will mean some change is on the cards

CHALLENGES will be faced and change for residents is on the cards according to the West Midlands Mayor, Richard Parker.

This comes after the West Midlands Combined Authority (WMCA) Board agreed a £1.2billion budget for 2025/26 during a meeting at the City of Wolverhampton Council chamber.

Mr Parker said the financial plan would help drive economic growth, build more social and affordable homes, improve public transport and give people the skills they need to land good quality jobs.

This year's Budget is historic in that it includes, for the first time, an Integrated Settlement marking an unprecedented shift in power, funding and responsibility from Westminster to the West Midlands.

The £389million Settlement will cut bureaucracy and give Mr Parker and local leaders, greater control, choice and power to focus the money on regional priorities.

Together with additional funds secured from Government and other sources, the WMCA's indicative Capital Budget for 2025/26 will be £684.4m.

This will be used to invest in projects that support the Mayor's four key priorities – Growth for Everyone, Homes for Everyone, Jobs for Everyone and Journeys for Everyone. It will be accompanied by



West Midlands Mayor, Richard Parker.

a revenue budget of nearly \$559m.

The Mayor said: "Since being elected I have taken action to tackle youth unemployment, secured a \$5.5bn Investment Zone to drive economic growth, funded hundreds of new social and affordable homes and made swift progress to bring our buses under public control.

"It is these things - good jobs, affordable homes, efficient public transport and thriving businesses – that matter most to people and that's why they are my priorities.

"We have just approved a £1.2billion budget to deliver on these priorities and make a differ-

ence to the West Midlands.

"This is the same amount as last year despite a difficult economic backdrop. It will help tackle some of the biggest challenges we face as a region so we can begin to change thousands of lives for the better and look forward with renewed optimism."

At the meeting it was said the Budget had taken into account the financial and cost of living pressures faced by the region's local authorities and residents.

This includes committing to delivering operational efficiency savings of \$5m to ensure that WMCA con-

tinues to deliver value for money.

There will also be no Mayoral precept for the tax payer during 2025/26 or any increase in the WMCA membership fees for local councils

The scale of the investment set out in the Budget to improve the quality of life across all of the region's communities includes:

*\$204m investment in jobs, skills, training and apprenticeships to help reduce youth unemployment and give everyone the opportunity of a job that pays well.

*\$67.7m for housing delivery, especially the construction of more

social and affordable housing so that everyone will have a place to call home and \$37.8m for retrofitting homes across the region to make them more energy efficient and reduce home owner energy bills.

*\$55.7m to drive economic growth and support the region's investment zone with help for smaller businesses to make sure all communities benefit and the environment is protected.

*The Budget also includes \$554.9m for transport including major infrastructure projects to expand and decarbonise the network including the ongoing construction of new rail lines and stations, Metro tram lines, zero emission buses and safe walking and cycling routes to better connect people to jobs, education and training opportunities.

Provision is included to support the region's bus network and protect the existing level of services.

In addition to this, the transport revenue budget includes \$61.1m for concessionary travel for older people, children and people with disabilities as well as \$6.9m for Accessible Transport.

There is also funding for the continued subsidy of the operation of the West Midlands Metro and support for the West Midlands Cycle Hire scheme.

THE JONES FAMILY JEWELLERS

CASH YOUR GOLD & SILVER TODAY! PRICES ARE THE HIGHEST THEY HAVE EVER BEEN! GET A QUOTE TODAY!



LEAMINGTON SPA

01926 882552 - 3 Satchwell Walk, CV32 4QE

KENILWORTH

01926 954271 - 16 Talisman Square, CV8 1JB



Kenilworth Textile, Silver & Jewellery Valuation Day

Thursday 10th April

10am to 2pm

Valuations of Textiles, Clothing, Accessories, Silver, Gold, Jewellery, Watches, Antiques, and Collectables

Items may be left to be consigned into Auction
**St Francis of Assisi Church Hall,
 110 Warwick Road,
 Kenilworth, CV8 1HL**



Refreshments in aid of WCS Care



Free Home Visits | Estate Clearances & Downsizing

If you have a lot of items you want valuing, we offer a **FREE** home visit service where we can come to your home. Contact us for more info

T: Hansons Warwickshire 07470 459309

E: clivejones@hansonsauctioneers.co.uk

www.hansonsauctioneers.co.uk



Hansons Auctioneers, Etwall, Derbyshire, DE65 6LS

BEDS

PRICE PROMISE
GALORE

Choose from

- * Open Coil Mattresses
- * Memory Mattresses
- * Pocket Sprung Mattresses
- * Gel Mattresses
- * Hybrid Mattresses

FROM ONLY
£89



MATTRESSES

- * Choose your preferred firmness
- * Choose your size
- * Choose your budget
- * Bespoke mattresses and beds made to order



£399

DOUBLE COMPLETE BED

- * We have budget friendly to luxury
- * All types of mattresses for comfort and support
- * Fast delivery service

Great Prices on Quality Beds. Don't miss out!

RCN
BEDS & FURNITURE
Henley Rd,
Coventry CV2 1AB
02476 603254

SOFAS 4 ALL

- * Leather Suites
- * Modern Sofas
- * Traditional Sofas
- * Corner Sofas
- * Sofa Beds



CORNER SOFAS

- * Comfort
- * Style
- * Quality
- * Low Prices

RECLINER SUITES



QUALITY SOFAS

VISIT US TODAY! TRY BEFORE YOU BUY!

~~comfortmatters.co.uk~~

Great Deals on Quality Sofas!



Spring is a great time to work at clearing debt. s

Taking the first steps to a more secure future

SPRING is a great time to clean, clear and refresh more than just the home and, at the start of the financial year, is a good time to look at tackling debt.

Olle Pettersson, personal loan expert at Finanzas Justas - finanzasjustas.com/es - shares seven tips to help reduce debt for good.

Olle said: "Taking the first step to tackle your debt is a brave one - but it's well worth it."

"Debt is a numbers problem and not a character flaw, and simple things like writing down how much debt you owe and creating a focused plan to tackle it, gives you your power back."

"Debt is rooted in emotions, habit and mindset - once we break the habit of overspending as a way to cope with negative emotion, financial freedom begins."

Step 1 - Take ownership of your debt by accepting it and seeing it for what it is - a numbers game, not a character flaw. The more debt people pay off, the closer you are to financial control and freedom. Think about debt in a very clinical way - cut the negative thoughts and assumptions and get cracking on paying it off as quickly as possible with the least amount of interest.

Step 2 - Clarify exactly how much is owed - Write it all down, how much is owed, the APR (annual percentage rate - otherwise known as interest rate) on each debt, and minimum payments for each. Facing it helps fix it and debt is a numbers game - no number is too large to be reduced.

Step 3 - Decide the best method to pay off the debt - There are two tried and true methods - the debt snowball method and the debt avalanche method. Both work and it's important to assess each one and decide which method is best for the individual.

The debt snowball taps into basic human psychology, encouraging people to build motivation by paying off the smallest debt first. The sense of reward from paying this off propels the person to keep going.

The debt avalanche method focuses on paying off your highest interest (and the most expensive) debt. Just like an avalanche increases in speed and power as it rolls down a hill, paying off the most costly debts first

is the fastest and most powerful way to free up cash.

Step 4 - Slash interest payments to clear debt faster - Talk to your lenders about lowering interest rates. Lenders can be surprisingly understanding about negotiating a lower interest rate - especially when previous payments have been made on time. Be open about the situation and demonstrate a willingness to work with them on a solution. Banks or loan providers may agree to lower the interest rate or introduce a temporary payment plan.

Transferring debt to a 0 per cent balance transfer or money transfer credit card is a great way to reduce interest on it. The interest-free period is usually 12 to 18 months and allows people to pay off their old card with the new 0 per cent rate. The same amount will be owed initially but on a far lower rate. It is better for people to transfer some if they are unable to move all.

Step 5 - Create a rock solid repayment plan - Put together a timeline with a realistic end date to have the debt paid off. Then, set up key check-in dates along the way - for example, if the timeline is two years for debt repayment, set check-in reminders every three months. These then help monitor progress and ensure the plan stays on track. Adjustments can then be made to the timeline if needed.

Step 6 - Cut back on unnecessary expenses - The more cash a person has, the faster debt can be paid off and the more money can be saved for the future. Finding extra revenue does not have to be something as dramatic as taking on an extra job (although this can be done if the person has time). People are urged to cancel any unused subscriptions and sell items they do not need - for example, old clothes in good condition, furniture and old but usable tech.

Step 7 - Commit to rewriting the financial future - To break patterns that got a person into debt in the first place, they must first understand how they got there. This is not about shaming over the past but safeguarding a future full of financial freedom. People need to recognise triggers for overspending and write down what they want from a debt-free future, to remind themselves every day of the importance of a debt-free life.

#ALSLetsMe

www.arnoldlodge.com



ARNOLD LODGE

4-18 yrs Co-educational Independent Day School



ALS Lets ME
ACHIEVE
 What will your child be?

**JOIN US AT OUR OPEN DAY
 ON SATURDAY 10TH MAY 10:00AM - 1:00PM**



01926 778050



admissions@arnoldlodge.com



15-17 Kenilworth Rd, Leamington Spa, Warwickshire CV32 5TW



RSC

STRATFORD-UPON-AVON
12 APRIL - 24 MAY

MUCH ADO ABOUT NOTHING

BY WILLIAM SHAKESPEARE

SHAKESPEARE'S
ORIGINAL
ROM-COM

BOOK NOW
[rsc.org.uk](https://www.rsc.org.uk)

RSC E10 Tickets Sponsor 

 Supported using public funding by
ARTS COUNCIL
ENGLAND

King explains why communities need strong local media

by **Tristan Harris**
tristan.harris@bullivantmedia.com

HIS MAJESTY The King has delivered a message to everyone who works in the media industry at a special reception at Buckingham Palace last Wednesday at an event attended by two of our journalists.

Journalists, editors, news editors and other staff attended the prestigious reception for regional media.

Among them were Bullivant Media Group Ltd's very own Ashleigh Osborne, the news editor on the Redditch Standard and reporter on the Solihull Observer, and Sonny Rackham, news editor on our Evesham and Pershore Observer, and writer for the Bromsgrove and Droitwich Standards and Malvern Observer, and finance director Ian McGahan.

Ash said: "It was an absolutely amazing day.

"As well as getting to meet The King and Queen and see the inside of Buckingham Palace, it was great for the local media and our papers



and websites to be recognised by His Majesty."

Sonny added: "Rubbing shoulders with royalty, would you believe it?"

"It was a night to remember and a good chance to celebrate local media."

In the address, King Charles said: "I have long believed that regional media, in all its forms, has a unique and vital role to play in society, perhaps even more so in these uncertain times.

"As I said in a speech to mark the tercentenary of Britain's first daily national newspaper, back in 2002, the Press, alongside other

long-standing institutions, is at the forefront of 'defining, describing and celebrating the more profound values of our nation'.

"Two decades on, when too much focus is given to that which divides us, that role for your whole industry is more important than ever – and it starts from the ground-up, at local level, in your hands.

"Your reporting, and the work of all those who support you, helps amplify and reaffirm the rights and responsibilities we all share.

"It shines a light in dark corners, exposing injustice and wrongdoing. Above all, it helps strengthen



Bullivant Media journalists Ashleigh Osborne and Sonny Rackham at the Buckingham Palace gates which were crafted by the Bromsgrove Guild. s

our communities, in times of joy and at moments of sorrow.

"You won't always get it right. A free media is one that will and does make mistakes. But at its best, it is a cornerstone of our democracy."

He spoke about the commercial pressures and changing technologies which has had a significant impact on the media industry.

"But as the media landscape has changed, so too many of you have adapted and innovated, finding ways of sharing your journalism and engaging audiences in new and creative ways. It is in everyone's interests that you should succeed.

"For without a thriving and financially robust regional media, we would all be the poorer."

OFTEN IMITATED BUT NEVER EQUALLED

While all costs are going up - OURS ARE STAYING DOWN

Due to our customer friendly services of No Door Salesmen, No Showroom and little overheads



NEW FLUSH WINDOWS

BEAUTIFUL COMPOSITE DOORS
Fully fitted
Competitive Prices

UPTO 30% OFF ALL WINDOWS



ALL PRODUCTS HAVE A 10 YEAR INSURANCE BACKED WARRANTY

BILL MOORE'S WINDOWS AND DOORS
A NAME YOU CAN TRUST

1 Brookside Close, Stratford-upon-Avon, Warwickshire CV37 9PL

01789 415171 • 07729 689239 • www.billmooreswindowsanddoors.co.uk

A great time to start planning

GREEN-FINGERED expert Sara Milne from The Gardening PR and Member of the Garden Media Guild gives her advice about what should be done on plots throughout April.

APRIL is a great time for people to reacquaint themselves with their gardens, take some time out and sit for a few minutes with a cuppa, having a think about their plans for the upcoming growing season whilst listening to the birds.

And, if the sun is shining, there is even more to smile about.

In addition to it being the month when colourful tulips are in full bloom, it is also a time of heady action in the garden - summer bulbs can be planted, herbaceous plants will need to be supported and seedlings pricked out.

Planting generally is in full swing, particularly plants bought in containers. The soil is now relatively warm and rain is normally fairly frequent. Trees, shrubs, roses and perennials planted in the ground now will have plenty of time to establish their roots before summer.

In the vegetable garden it's time to plant hardy herbs, grow pumpkins, asparagus, tomatoes and beans.

If sweet peas were sewn in the autumn or have been bought in pots from the local garden centre, then now is the time to plant the seedlings out.

Sweet peas can be planted straight in the ground or in deep pots filled with compost. Good light is essential to stop young plants becoming weak and lanky. Pinching out the growing tips when the seedlings reach 10cm tall will encourage stronger and multi-flowered plants.



Sweet peas can be planted out this month and provide a beautiful scent. s

Sweet peas are perfect for picking and are easy to grow in pots or in the ground, training them up a frame for a beautiful display. Planting sweet peas near a seating area gives you the benefit of their scent as you sit and relax in the garden - one of the best smells of the summer.

They come in a variety of colours and sizes, for example: *Lathyrus vernus* 'Alboreus' is a hardy perenn

ial bush-forming sweet pea that has tiny pink and white flowers in April, reaching 35cm in height and spread, *Lathyrus odoratus* 'Matucana' is a hardy annual that is a hugely popular old-fashioned sweet pea with scented two-tone purple flowers in summer, ideal for picking and *Lathyrus odoratus* 'Lord Nelson' is a hardy annual grown for picking with blue flowers and a highly rated scent in summer

with a reach of 2m.

Another summer smell - and taste - is mint which will be showing new growth from its winter die back this month.

It's one of the best herbs for attracting pollinators such as hoverflies, lacewings, bees and butterflies into the garden.

Keeping it controlled is essential as mint tends to take over pots and

beds with its robust root system, so now would be a good time to thin out any existing mint plants to let new shoots flourish. Apart from being a useful culinary herb mint also makes a great herbal tea.

Peppermint leaves contain several essential oils that are released when steeped in hot water, including menthol, menthone and limonene.

Collectively, these give peppermint tea its 'refreshing, cooling, minty taste. Peppermint tea can aid digestion and may also relieve an upset stomach.

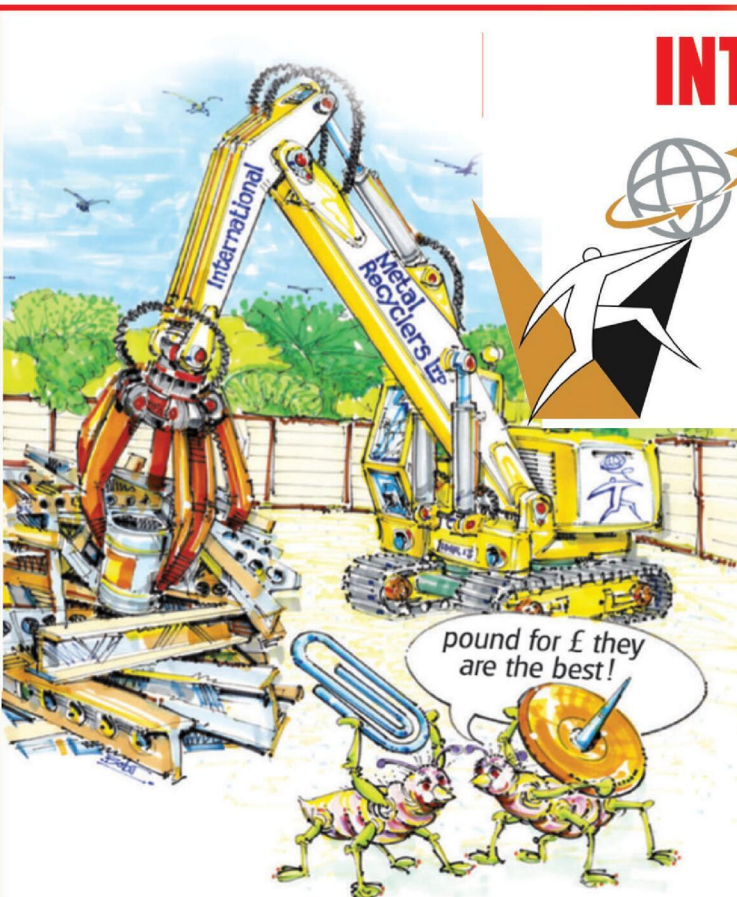
In some cases, it has been seen to relieve symptoms of irritable bowel syndrome (IBS). If growing mint, make sure it's planted in moist but well-drained soil in full sun to partial shade.

It's an exciting month to get back into the garden and start to sow outdoors, but look out for frosts and keep any tender plants indoors for now.

Top tips from the RHS for this month include keeping weeds under control, start sowing seeds outdoors, plant or sow sweet peas outside, plant out main crop potatoes, plant new pond plants, divide waterlilies and sow new lawns or repair bare patches.

Also, lightly cut back lavender to stop it getting too leggy or woody, divide bamboos, protect fruit blossom from late frost and this is the last chance to prune climbing or rambling roses.

And finally, as Thomas Tusser said in 1557: "Sweet April showers, do spring May flowers."



INTERNATIONAL METALS & CABLE RECYCLING LTD

We purchase all Ferrous and Non Ferrous Metal Batteries and Cables

Collection Service Available

Long Marston Road, Long Marston, Stratford Upon Avon, Warwickshire, CV37 8AQ

01789 721 288

david@imrltd.co.uk

Open Mon/Fri - 8am - 5pm

Motoring

www.carfinder247.co.uk

TELEPHONE 01926 451900 FACSIMILE 01527 584371



New features to launch at SEAT

DRIVERS in the UK have the chance to get their hands on the SEAT Black Editions - the latest model updates from SEAT, which add new interior and exterior design features for those wanting a more distinctive look.

The Black Editions will be available on the FR variants of the Ibiza, Arona, Leon, and Ateca.

First revealed in November 2024, SEAT announced a new look to its line-up with the introduction of the FR Black Editions across its whole SEAT range.

The Black Edition represents a strengthening of the exterior and interior designs, delivering an even

more streamlined and sophisticated look to the models.

Additions include alloy wheels, a black roof spoiler, side skirts and keyless entry.

The SEAT Arona FR Black Edition comes with black side skirts and roof rails to complement the tone, as well as exclusive 18-inch alloy wheels painted in black. Subtle additions such as the Black Edition identification embossed into the B-pillar references the urban-SUV's status.

Inside, the FR Black Edition model gain standard textile bucket seats, keyless entry and go, adaptive cruise control, park assist, and a rear-view camera. The vehicle's

exterior character is brought into the cabin with dark aluminium matt colouring used in the dashboard, console, and door mouldings. The Arona is available for on-the-road (OTR) prices starting from £28,805.

SEAT's bestselling Ibiza is also opening for order with FR Black Edition treatment, adding a range of exterior and interior tweaks to emphasise its character.

The 18-inch black alloy wheels work with the black roof spoiler and side skirts to highlight its sporty character.

Inside, drivers gain keyless entry, panoramic sunroof, Dinamica sports bucket seats and for the first

time ever on SEAT Ibiza, heated seats. The Ibiza is available from £24,935 OTR.

The SEAT Leon FR joins the Black Edition family with black alloys, roof spoiler, and side skirts, complementing the distinctive design.

It also includes black mirror housings, a panoramic roof, and keyless entry. The Leon is available from £33,150 OTR.

The SEAT Ateca FR Black Edition is the largest Black Edition model to be introduced.

With its new sporty 19-inch black alloys, electric tailgate, and top-view camera, the Ateca FR Black Edition is an excellent addition to the new range and is available from

£36,890 OTR.

Marcus Gossen, SEAT and CUPRA UK's managing director, said: "The new FR Black Edition across the SEAT range is a fantastic addition to our current line-up and we're thrilled to open order books in the UK."

"We're focused on continuously improving our offerings to customers nationwide, and we believe the FR Black Editions provide a compelling upgrade to the existing FR models."

"We're committed to driving the growth of the SEAT brand, and the introduction of the FR Black Editions is a significant step in that direction."

Appointments

www.careerfinder247.co.uk

TELEPHONE 01527 588688 FACSIMILE 01527 584371



AVON SUPPORT
SUPPORT ENABLE EMPOWERED

HIRING IN YOUR AREA!

Are you kind, compassionate, creative and proactive?

We are looking for Support Workers with these qualities to join our growing friendly team in Stratford-Upon-Avon.

About the role

Providing care and support to adults with a range of additional needs, you will be...

- assisting the people we support to engage in hobbies and activities in the community, including trips to the cinema, bowling, shopping, going to the gym, out for meals, theatre trips, and so much more!
- This role will also include supporting the people we support at home with a variety of daily tasks

APPLY NOW

- Day and night shifts available on full time and part time basis
- Competitive Rates of Pay and company funded DBS
- Employee Appreciation and Employee Wellbeing schemes, offering 24/7 GP access, discounts and much more!



01484 629935
recruitment@avonsupport.co.uk



www.taurustaxis.co.uk

Are you Looking To Top Up Your Salary or Pension?

Then we could Help !!

DRIVERS REQUIRED

With or without Taxi Badge / Vehicle Clean Licence Essential

Holiday pay will be accrued and paid

We also require **PSV DRIVERS**

with valid CPC card & training, part time hours, very good rates of pay.

For Further Details Please Call

07773 022 239

Position to fill?

Bullivantmedia
GROUP LIMITED

We can offer you....

GREAT LOCAL COVERAGE

IN PRINT & ONLINE



Contact **Caroline** or **Kelly** on

01527 588625 • 01527 588749

caroline.birkenhead@bullivantmedia.com

kelly.taylor@bullivantmedia.com

Classified

TELEPHONE 01527 588688 FACSIMILE 01527 584371

PUBLIC NOTICES

ANNIE ROBINSON (Deceased)

Pursuant to the Trustee Act 1925 any persons having a claim against or an interest in the Estate of the above named, late of 57 Holborn Avenue Coventry, CV6 4GA, who died on 27/02/2025, are required to send written particulars thereof to the undersigned on or before 05/06/2025, after which date the Estate will be distributed having regard only to the claims and interests of which they have had notice.

ANGELS SOLICITORS LLP,
117-119 New Union Street Coventry,
CV1 2NY

ELAINE JOYCE LENTON (DECEASED)

Pursuant to the Trustee Act 1925 any persons having a claim against or an interest in the Estate of the above named, late of 105 Birmingham Road, Coventry, CV6 3ST, who died on 11/12/2024, are required to send written particulars thereof to the undersigned on or before 05/06/2025, after which date the Estate will be distributed having regard only to the claims and interests of which they have had notice.

ANGELS SOLICITORS LLP,
117-119 New Union Street Coventry,
CV1 2NY

PUBLIC NOTICES

Warwickshire County Council

ROAD TRAFFIC REGULATION ACT 1984
Warwickshire County Council has made the following Temporary Traffic Orders:

B4113 STONELEIGH HILL, STONELEIGH
Order Effect: All traffic will be prohibited from making a right turn from B4113 Stoneleigh Hill, Stoneleigh onto C32 Bubbenthal Road.
Reason for Order: For public safety while HS2 works are in progress on A46.
Order Commences: 11 April 2025 for up to 18 months.
Anticipated Completion: 17 June 2025.
Contractor: Balfour Beatty Vinci. HS2 Helpdesk, Tel: 08081 434 434.

For all of the above temporary orders, pedestrian access to and egress from properties and land situated adjacent to the length of road to be closed will be maintained at all times. Vehicular access will be maintained where possible.
To report any problems with these works or for further details of our current & planned roadworks visit our website warwickshire.gov.uk/roadworksmap or call us 01926 412515.
S Duxbury, Director of Strategy, Planning & Governance,
Shire Hall, Warwick CV34 4RL Date 4 April 2025

PUBLIC NOTICES

Warwickshire County Council

ROAD TRAFFIC REGULATION ACT 1984
Warwickshire County Council has made the following Temporary Traffic Orders:

SCHOOL HILL, NAPTON-ON-THE-HILL
Order Effect: Road closed to vehicular traffic.
Reason for Order: To safely enable remedial works of overbanding.
Order Commences: 7 April 2025 for up to 18 months.
Anticipated Completion: 7 April 2025.
Access & Diversion: Hackwell Street, School Hill, Chapel Lane and vice versa.
Contractor: Sunbelt Traffic Management, Tel: 01543 375 121.

Warwickshire County Council proposes to make the following Temporary Traffic Orders:
HAMBRIDGE ROAD, BISHOPS ITCHINGTON
Order Effect: Road closed to vehicular traffic.
Reason for Order: Structural examination works of railway bridge, closed 21.00hrs-04.00hrs.
Order Commences: 22 April 2025 for up to 18 months.
Anticipated Completion: 23 April 2025.
Access & Diversion: Hambridge Road, Poplar Road, Chapel Street, Gaydon Road, Knightcote Road and vice versa.
Contractor: Centurion Traffic Management, Tel: 01132 375 360.

For all of the above temporary orders, pedestrian access to and egress from properties and land situated adjacent to the length of road to be closed will be maintained at all times. Vehicular access will be maintained where possible.
To report any problems with these works or for further details of our current & planned roadworks visit our website warwickshire.gov.uk/roadworksmap or call us 01926 412515.
S Duxbury, Director of Strategy, Planning & Governance,
Shire Hall, Warwick CV34 4RL Date 4 April 2025

PUBLIC NOTICES

Rugby Borough Council Town and Country Planning Act 1990 (as amended)

Application Number R25/0067
33, BROWNSOVER LANE, RUGBY, CV21 1HY
Application for reserved matters approval of access, appearance and landscaping within 33 Brownsolver Lane to outline planning permission R24/0154: outline planning permission for a 3 bedroom bungalow.
This development may affect a Conservation Area

Application Number R25/0191
THE OLD STABLES, HILL FARM, HALLAMS CLOSE, BRANDON, COVENTRY, CV9 3NZ
Proposed single storey rear extension and first floor extension.
This development may affect a Conservation Area

Application Number R25/0211
43 REGENT STREET, RUGBY, CV21 2PE
Internal alterations and rear single storey extension with alterations to roof and addition of a dormer.
This development may affect a Conservation Area

Members of the public may inspect copies of the application, the plans and documents submitted with it online at:
www.planningportal.rugby.gov.uk or in an electronic form at: Town Hall, Evreux Way, Rugby CV21 2RR between the hours of 9.00 am and 5.00 pm Monday to Friday until 25 April 2025. Please note a planning officer would not be present.

If you wish to make an appointment to discuss the application, please contact the case officer.
Any person who wishes to make representation to the above mentioned Council about the applications should make them online - www.planningportal.rugby.co.uk (search for application number and select comment) - or in writing by that date to The Chief Officer Growth and Investment, Town Hall, Rugby, CV21 2RR.

If an application is determined by the Planning Committee, members of the public may have the opportunity to speak at the meeting. More details about public speaking are available from the Council or on-line at:
www.rugby.gov.uk/speakingatplanning

For householder or minor commercial applications, in the event of an appeal against a refusal of planning permission, dealt with on the basis of representations in writing, any representations made will be sent to the Secretary of State, and there will be no further opportunity to comment at the appeal stage.

Nicola Smith
Chief Officer - Growth and Investment
MRTP1

PUBLIC NOTICES

LICENSING ACT 2003 - Public Notice
Bid Leamington is applying for the new grant of a Premises Licence for Leamington Food Festival, Royal Pump Room Gardens, Dorrner Place, Leamington Spa, CV32 4AA

If granted the application will allow the following licensable activities to take place: Sale of Alcohol for consumption on and off the premises (one weekend per year)
Any person wishing to make representations in relation to this application may do so by writing to the Licensing Authority:
Warwick District Council
Town Hall, Parade
Royal Leamington Spa
Warwickshire
CV32 4AT
licensing@warwickdc.gov.uk
Representations may only be made for 28 consecutive days from the date of this Notice.
A copy of the application for the grant of the above licence is kept by the Licensing Authority at the above address. The application can be viewed Monday to Thursday 9.00 am to 5.00 pm, and 9.00 am to 4.30 pm on Fridays, except Bank Holidays.
It is an offence knowingly or recklessly to make a false statement in connection with an application. The maximum fine for which a person is liable on summary conviction for making a false statement is a Level 5 fine on the Standard Scale. 3rd April 2025

PUBLIC NOTICES

DOREEN MARGARET MARS DEN (Deceased)
Pursuant to the Trustee Act 1925 any persons having a claim against or an interest in the Estate of the above named, late of 532 Broad Lane, Coventry, CV5 7BT, who died on 10/01/2025, are required to send written particulars thereof to the undersigned on or before 05/06/2025, after which date the Estate will be distributed having regard only to the claims and interests of which they have had notice.
Pennams Solicitors LLP,
17A Queens Road,
Coventry CV1 3DH
(Ref:CNMARS DEN)

ANNOUNCEMENTS

FUNERAL DIRECTORS

Henry Ison & Sons Funeral Directors

A Funeral Plan to suit you



Plan ahead with a Choice Funeral Plan
Visit henryison.co.uk/choice

02476 997 811
Branches in Coventry (Binley Rd, Allesley Old Rd and Daventry Rd), Kenilworth and Leamington Spa



For terms, conditions, exclusions and limitations, visit choiceplan.co.uk/terms

PERSONAL

Susan Lucas
is looking for
Mr Paul Carroll
Please call
01472 354142
or 07775790245



SALES & WANTS

MISCELLANEOUS

BEDS NEW Doubles £95 Singles £59 King size £159. Second hand doubles £49 Singles £29 Fridges £49 Freezers £59 Can deliver 07703 925662
RECLINER CHAIR electric rise & recline £169 Manual recline chair £60 High seated chair £40 Can deliver 07703 925662
CARPET off cut 13 feet x 5 feet 3 inches Thick yellow / gold pile £20 telephone 0121 704 9245
DAEWOOD silver microwave - Good condition £15 telephone 0121 704 9245
KNOWLE 07933 245921

MISCELLANEOUS

BRASS free standing two bar electric fire with coal effect. Good condition £20 telephone 0121 704 9245
PINE headboard 1970s good quality and condition £15 telephone 0121 704 9245
BATHROOM Suite - a complete white bathroom suite with PUD Bath, complete with pedestal abut toilet system and 4 new chrome taps - Offers invited Tel: 07719 695685
INDIAN Chair £80 Tel: 07719 695 685
NURSING Chair £30 Tel: 07719 695685
WHEELCHAIR / Breezy/ excellent condition very little used £75 ono 0121 744 1066

WANTED

****WANTED: Vinyl Records CDs Cassettes**
Vintage or New **
Seeking classic rock, jazz, indie and rare finds. Cash paid
Call or text: 07765 142354 Or 01527 893992
Or email: welston@live.com
Paul (Albatross & Doomed Records)

Warwickshire County Council

ROAD TRAFFIC REGULATION ACT 1984
Warwickshire County Council has made the following Temporary Traffic Orders:

BIART PLACE, EASTLANDS, RUGBY
Order Effect: Road closed to vehicular traffic from its junction with South Street.
Reason for Order: To allow works for realigning kerbs, re-surfacing and landscaping.
Order Commences: 8 April 2025 for up to 18 months.
Anticipated Completion: 20 May 2025.
Access & Diversion: No diversion available.
Contractor: Stave-Con Ltd, Tel: 01902 493 749.

NORTHAMPTON LANE, DUNCHURCH
Order Effect: Road closed to vehicular traffic.
Reason for Order: Works to repair/replace defective frame and cover.
Order Commences: 9 April 2025 for up to 18 months.
Anticipated Completion: 9 April 2025.

Access & Diversion: Northampton Lane, Rugby Road, Cavston Lane and vice versa.
Contractor: Customer Solutions Plus, Tel: 07918 298 599.

TEESWATER CLOSE, LONG LAWFORD
Order Effect: Road closed to vehicular traffic.
Reason for Order: Works to repair/replace defective frame and cover.
Order Commences: 8 April 2025 for up to 18 months.
Anticipated Completion: 8 April 2025.
Access & Diversion: No diversion available.
Contractor: Customer Solutions Plus, Tel: 07918 298 599.

Warwickshire County Council proposes to make the following Temporary Traffic Orders:

LITTLE CHURCH STREET, CALDECOTT, RUGBY
Order Effect: Road closed to vehicular traffic.
Reason for Order: To safely enable works to reconnect supply.

Order Commences: 21 April 2025 for up to 18 months.
Anticipated Completion: 23 April 2025.
Access & Diversion: No diversion available.
Contractor: Network Plus, Tel: 08006 783 105.

LILAC DRIVE, BILTON, RUGBY
Order Effect: Road closed to vehicular traffic.
Reason for Order: To enable duct laying works.
Order Commences: 22 April 2025 for up to 18 months.
Anticipated Completion: 23 April 2025.
Access & Diversion: No alternative route available.
Contractor: Core Highways, Tel: 07979 296 733.

PYTCHELY ROAD, RUGBY
Order Effect: Road closed to vehicular traffic from a point outside property number 4.
Reason for Order: For works to repair/replace a defective manhole frame and covers.
Order Commences: 22 April 2025 for up to 18 months.
Anticipated Completion: 22 April 2025.
Access & Diversion: Pytchley Road, Faraday Road, Naseby Road, Cromwell Road and vice versa.
Contractor: Customer Solutions Plus, Tel: 07918 298 599.

ORCHID WAY, RUGBY
Order Effect: Road closed to vehicular traffic.
Reason for Order: To enable works on sluice valve chamber.
Order Commences: 22 April 2025 for up to 18 months.
Anticipated Completion: 24 April 2025.
Access & Diversion: No diversion available.
Contractor: For STW, Chevron TM Ltd, Tel: 03300 080 820.

For all of the above temporary orders, pedestrian access to and egress from properties and land situated adjacent to the length of road to be closed will be maintained at all times. Vehicular access will be maintained where possible.

To report any problems with these works or for further details of our current & planned roadworks visit our website warwickshire.gov.uk/roadworksmap or call us 01926 412515.

S Duxbury, Director of Strategy, Planning & Governance,
Shire Hall, Warwick CV34 4RL Date 4 April 2025

SERVICES

DRIVEWAYS

COVENTRY DRIVEWAYS
• Block paving • Slabs • Fencing • Gravel
• Turf & Artificial Grass • Decking, Steps and more
7 Years Warranty on all projects
Payment only after completion
02476 274439 07740 101227
www.spanglefish.com/coventrydriveways

GARDENING SERVICES

STUART'S GARDENING SERVICES
Landscaping & Tree Surgery
Fencing, Slabbing, Turfing, Block Paving, Bases, Mowing, Decking, Roofing and Guttering, Mini-digger/Dumper
Fully Insured. Registered carrier of waste.
FREE ESTIMATES
02476 305992 • 07813 790889
01788 211064
www.stuarts-gardening-services.yolasite.com

CONSERVATORIES & GLAZING

DOUBLE GLAZING REPAIRS
Locks, Hinges, Handles, Glass, Windows or Doors
New Doors/Windows
Also Supplied/Fitted
07973 200 623

HOME IMPROVEMENTS

HANDY MAN
If you're looking for a fast and reliable service
Then call Lenny
• Plastering • Plumbing • Fencing
• Gardening • Flooring • Kitchens
• Bathrooms • Carpentry • Flat pack furniture
• Tiling • Painting
02476 443 996
07794 784 266
NO VAT CHARGE

KITCHENS

S.W INSTALLATIONS
Kitchens & Bathrooms
FREE DESIGN & QUOTATION
QUALITY KITCHENS & BATHROOMS SUPPLIED & FITTED
PLUMBING, CARPENTRY, TILING, WORKTOP & DOOR REPLACEMENT
(Supply & fit, supply only or fit only)
LOCAL TRADESMAN
20YRS EXPERIENCE
NO JOB TOO SMALL
01926 773386 or **07971 684 353**

OOPS!

BETTER TO GET AN EXPERT!
Give one of the LOCAL EXPERTS on these pages a call!

PLUMBING

PS HEATING & PLUMBING
Boiler change from £1,300
Special offer for full Heating System
Specialist in
Worcester Baxi Biasi Ferroli & many more
Fully insured up to £2M.
Call for a Free Quotation: **07961 140 885**

CRS LTD
 Spring Lane South, Malvern WR14 1AT
 ATF's are the **ONLY** legal way to scrap your vehicles
BUYERS
 of all SCRAP Metals and SCRAP Vehicles
 The **ONLY** authorised treatment facility in Malvern!
 Best Prices Paid • Collection & Skip Drops Farm
 Equipment, Copper, Brass etc. • 50 Ton Weigh Bridge
LD REQUIRED - 01684 578081
 www.crs-malvern.co.uk

Observer SPORT



9 772040 128006
 Published by Bullivant Media Group Ltd, Webb House,
 Church Green East, Redditch, Worcestershire, B96 8BP
 Printed by Newsquest, Newspaper House, Osney
 Mead, Oxford, Oxfordshire, OX2 0EJ

VINYL RECORDS WANTED
 Buying since 1978
 Get your cash TODAY!
 I will come to you
 Phone PAUL
 01527 893992 | 07765 142354

www.rugbyobserver.co.uk

BRINGING YOU ALL THE LATEST SPORTS NEWS AND VIEWS FROM THE AREA

Valley ship five at home in heavy loss

by Aaron Sutcliffe
 aaron.sutcliffe@bullivantmedia.com

FOOTBALL: RUGBY Town conceded five goals at home in a heavy 5-2 defeat against promotion-chasing Long Eaton United.

The visitors raced into a three-goal lead as Evan Garnett, Owen Betts and James Shaw all struck inside the first half-hour at Butlin Road.

Rugby responded with two quickfire goals of their own as teenage debutant Lucas Stanley and Trey Charles cut the deficit to a single goal at the break.

However, Long Eaton struck twice after the break to seal the points.

The result means Rugby sit 19th in the Northern Premier League Midlands table, four points from safety with five matches left to play.



Long Eaton broke the deadlock on seven minutes as Garnett poked the ball home from close range.

And the visitors doubled their lead on 22 minutes when Gianluca Bucci's powerful cross hit Betts and went into the net.

The away side all but sealed the points on the half-hour mark as Shaw fired a low shot under Valley goalkeeper Paul Hathaway.

However, Rugby kept themselves in

the contest four minutes later when 17-year-old Stanley flicked in Charles' cross at the near post.

And Valley struck again on 37 minutes as Charles kept his cool from the penalty spot after Lewis King fouled Harrison Nee in the box.

Long Eaton regained control of the game after the interval before Andrew Wright restored the away side's two-goal cushion on 56 minutes with a strike from the edge of the penalty area.

And the visitors made sure of the points five minutes from time as Betts sent a dipping volley into the net from 25-yards out.

Rugby are next in action against champions Quorn on Saturday, April 5 with kick-off at 3pm at Farley Way.

Harrison Nee is tripped by the Long Eaton goalkeeper to win a penalty. Picture by Martin Pulley.

Blow for Bears ahead of Sussex season opener

CRICKET: WARWICKSHIRE CCC have suffered a huge blow ahead of the start of the County Championship season after overseas signing Tom Latham sustained a broken hand.

The Bears signed New Zealand Test captain Latham on a one-year-deal to play in all three formats in November.

However, Latham will miss the next four to six weeks of action after breaking his right hand in training.

The injury occurred while Latham was training with his domestic club side Canterbury.

The club hope Latham will be fit to return for Warwickshire's trip to Yorkshire at the start of May.

Warwickshire first team coach, Ian Westwood said: "Tom's due to arrive with us on April 8 so he was always missing the first game of the season.

"If the injury heals well, he'll only sit out two games for us,

that's what we're hoping for.

"Clearly it's disappointing but he's with us for the duration of the season so will have plenty of time to make his mark."

Warwickshire begin their County Championship Division One campaign against Sussex on Friday, April 4.

Sussex are returning to Division One for the first time in a decade.

The fixture also sees former Bears first team coach Mark Robinson make a swift return to Edgbaston.

Warwickshire and Robinson parted ways by mutual consent less than two months before the start of the new season.

The Bears acted swiftly to replace Robinson with assistant coach Westwood.

And Robinson has since joined the Sussex coaching team on a short-term deal.

Warwickshire host Sussex on Friday, April 4 with the game to begin at 11am at Edgbaston.

CASHBROKERS

LEAMINGTON SPA

PAWNBROKING LOANS
 SCRAP GOLD & SILVER
 BUY BACK
 JEWELLERY & WATCHES
 COINS & BULLION

CASH PAID
**FOR GOLD, SILVER,
 COINS & BULLION**



01926 258252

144 Parade, Leamington Spa, CV32 4AG

www.cashbrokersleamingtonspa.co.uk

