


Observer

Rugby & Lutterworth 

Friday, May 16th 2025 Week 20

 facebook.com/rugby.observer

rugbyobserver.co.uk

 @rugbyobserver t: 01926 451900

Your **FREE** edition - just pick one up and keep up with the news



50% OFF
EVERY WEEKEND
when you spend £15



**THE TAKEAWAYS
YOU LOVE, IN A TAP**

*Offer available Friday-Sunday between 9am and 11.59pm. Offer ends 11.59pm on 25th May. Min spend £15, maximum discount £15. Subject to availability. Selected restaurants only. Certain products excluded. Geographical restrictions, service and delivery fees apply. For full T&Cs see deliveroo.co.uk/terms.

Is getting in a  the only thing the family will agree on? Does a late Saturday night call for a big Sunday ? Setting the mood with a date night burger &  (because who needs fancy when you've found the perfect match)? In too much of a hurry to cook up that Friday night ? Or maybe it's a post-footie  you're looking to score?

Whatever's on the table this weekend, you can count on us to deliver.

**THE TAKEAWAYS
YOU LOVE, IN A TAP**



*Offer available Friday-Sunday between 9am and 11.59pm. Offer ends 11.59pm on 25th May. Min spend £15, maximum discount £15. Subject to availability. Selected restaurants only. Certain products excluded. Geographical restrictions, service and delivery fees apply. For full T&Cs see deliveroo.co.uk/terms.

WANTED
Motorcycles and Scooters
 Any cc, condition or age,
 good prices paid
 07944 781 933 | 01926 257 643

Cash injection aims to increase appointments

Surgeries set for funding

by **Philippa Mingsins**
 philippa.mingsins@bullivantmedia.com

PLANS to modernise doctors' surgeries and increase appointments each year as over a thousand doctors' surgeries receive a bricks and mortar upgrade to modernise practices, including several in Rugby.

The government has announced patients across the UK will benefit from millions more GP appointments each year as over a thousand doctors' surgeries receive a bricks and mortar upgrade to modernise practices, including several in Rugby.

Bilton Green Surgery, Clifton Road Surgery, and Whitehall Medical Practice have been named in the scheme to receive funding to improve facilities and enhance patient care.

Rugby MP John Slinger welcomed the news saying it would be 'music to the ears' of patients in his constituency who were too often stuck in the '8am scramble for a GP appointment'.

He added currently, many GP surgeries could see more patients, but do not have enough room or

the right facilities to accommodate them.

A £102 million cash injection will create new consultation and treatment rooms to make better use of existing space to help patients be seen faster.

Mr Slinger said: "Residents in Rugby tell me their frustration after enduring the dreaded '8am scramble' and the difficulty that they have in getting a GP appointment. I promised Labour would help bring back the family doctor - with 1,500 new GPs recruited already, I'm delighted that our Labour government is starting to deliver on that promise.

"But that was just the start. We said we would fix the front door of the NHS - today we're fixing the front, the sides, the back and all the rooms in between with the biggest investment GP facilities have seen for years. A Labour government delivering on our promises for Rugby.

"I am pleased to say that several surgeries in Rugby have been named in the scheme to receive funding."



Johnny and Gemma of Oddle Entertainment helped Rugby get into the spirit on VE day. Picture by Marcus Mingsins 2025012MMR3

GETTING INTO THE WARTIME SPIRIT: A RED, white and blue jamboree marked VE day in rugby town centre last week.

The town got into the spirit at a vintage market at Old Market Place, where vintage and nostalgic goodies were on sale.

The event included vintage garden games and

face-painting, with World War Two re-enactors also on hand to help visitors step back in time to the 1940s.

See pages 12-13 for more on how Rugby and Lutterworth commemorated the 80th anniversary of the Second World War in Europe coming to an end.



Tel: 0800 3032559
 Mob: 07773 911552
www.drives4u.co.uk

Are you looking to improve or enlarge your driveway or patio?

We can provide you with a beautiful new patio or driveway in Coventry, Bromsgrove, Redditch, Solihull, Leamington, Kidderminster and Birmingham

5 Year guarantee

- We've designed and built just about every shape and size of driveway and patio you can imagine, so we will not be phased by your project.
- We strive to achieve 100% satisfaction and unlike other driveway companies, with us you pay absolutely nothing upfront.
- Give us a call and you could save upto £1000



Tel: 0800 3032559 | Mob: 07773 911552 | www.drives4u.co.uk

Championing the needs of Rugby residents since 1991 and delivering the news to you every week

Mountain high for Deepak as fundraiser hits whopping £30k

A DETERMINED pharmacy manager from Coventry has tackled North Africa's highest peak to raise a mountainous £30,000 for a hospital charity.

Deepak Lodhia, clinical services manager for pharmacy at The Meriden Hospital, and his colleagues climbed the 4,167ft-tall Mount Toubkal in Morocco in just three days, battling temperatures ranging from 20°C to -15°C.

The money raised will fund life changing medical equipment at Nuneaton's George Eliot Hospital.

Deepak and his colleagues were part of a

by **Andy Morris**
andy.morris
@bullivantmedia.com

17-person team which set out from Marrakesh to conquer Mount Toubkal, which is the highest peak in the Atlas Mountain range and requires immense skill to navigate.

Deepak said: "I've always believed in challenging myself. Climbing Mount Toubkal wasn't just about reaching the top. It was about stepping outside my comfort zone to raise as much as possible for a cause that helps thousands of people each year."

From day two of the

expedition, the conditions became much harder, firstly climbing down the equivalent of the previous day's climb and then an ascent of 3,500m - the equivalent of scaling Mount Snowdon three times.

"It was one of the hardest things I've ever done," Deepak said. "We were told the weather was turning and that this would be our only window to summit."

"It was tough - physically, mentally and emotionally. But the cause was so important to all of us, so we had to continue."

Battling against temperatures of -15°C, strong winds, snow and ice, they



began the final climb. Out of the 17 climbers, nine - including Deepak - suffered with altitude sickness. Just 500m from the summit, they had to turn back. The eight remaining members of the team reached the summit in six hours, proudly holding The Meriden Hospital T-shirt Deepak had brought with him to display on the summit.

He said: "It wasn't easily to stop so close to the summit, but safety had to come first. I am so proud of what we achieved as a team."

More snow, the effects of altitude sickness and exhaustion pushed the team as they made their way back down the valley to their final overnight stop.

Deepak said: "When you work in a hospital, you see first-hand the importance of teamwork. On that final descent we kept each other going. It really was a test of resilience. The whole experience gave me a new appreciation for nature, teamwork and the inner strength we all have inside us."

Now safely back in the UK, Deepak and his fellow climbers are delighted with their £30,000 total - money which will go directly to the George Eliot Hospital Charity to fund new medical equipment and well-being initiatives for staff



working in the Breast Care Cancer Unit.

Deepak added: "If you asked me now whether I'd do it again - my answer would be yes!

"The charity does such incredible work in our community and to be able to support them to do that

work is a special feeling. My colleagues at The Meriden Hospital have been incredibly supportive and without them this wouldn't have been possible. I'm incredibly proud of the team for what we achieved in support of such a great cause."



M MALLORY COURT
COUNTRY HOUSE HOTEL & SPA



*Acoustic Afternoons
with Barton Hollow*

Immerse yourself in the magic of live music as these talented musicians bring warmth and harmony to the afternoon...

2:45pm - 5:00pm

May - September (Selected Sundays)

*Bee
Experience*

Join us for a unique bee experience with Beekeeper Lottie Buckland, with honey tasting, a visit to our hives, a honey-inspired cocktail and a two-course honey-themed lunch.

Saturday, 7th June | £75.00pp



T: 01926 330214 | INFO@MALLORY.CO.UK

Harbury Lane, Leamington Spa, CV33 9QB

PUBLIC NOTICES



For all your latest information on
Planning Proposals, Traffic Notices,
Goods Vehicle Operator Licences,
Licences To Sell Alcohol and Probate Notices...

See
page
36





Campaigners hope to restore the derelict Coventry Stadium to its former glories.

Consortium is named in bid to reopen stadium

DETAILS of the consortium seeking to take over Coventry Stadium and restore motorsports to the Brandon venue have been revealed.

The Save Coventry Speedway and Stox Campaign Group (SCS) said the consortium – which includes two established motor racing promoters – was established in January and had already met with the group several times.

The consortium includes Graeme Robson, the owner of G&T Robson Agricultural Buildings, and Russell Andrew, owner of freight transport company RR Andrew Ltd, concrete manufacturing company Kwik Mix UK Ltd, and three coach transport companies.

Both are promoters of stock car racing under the Yorstox name, and are currently operational at Odsal Stadium, Bradford.

Other consortium members include Lyndon Rushby, owner of Rushby Developments, John Whalley, managing director of Rugby-based Nationwide Windows and Doors, and Huntapac Ltd managing director Warren Hunter, who made a formal offer to buy Coventry Stadium in 2020.

Matt Ford, speedway's most successful promoter over a period of two decades,

by **Andy Morris**
andy.morris
@bullivantmedia.com

has also declared his wish to promote Coventry Bees.

Stadium owners Brandon Estates first presented a proposal to build homes on the site – the former home of the Coventry Bees speedway racing team – in 2014, with the venue closing in 2016. Rugby Borough Council's planning committee unanimously refused the plan in 2022, with a subsequent appeal rejected by the Planning Inspectorate in 2024.

An SCS spokesperson said it was vital to secure speedway and stock car promoters to make the site sustainable.

They added: "We hope that, by providing the names and credentials of these individuals, this will give supporters confidence that the dream of restoring Coventry Stadium for motorsport is underpinned by serious businesspeople who possess not only the financial capability but also the organisational and technical expertise to turn our dream into a reality.

"With a business plan in place, all are firmly committed to the vision, and the over-riding reason for their involvement is their passion for motorsport and their desire to see the stadium

return to its established use. "Gaining control of the stadium and restoring it for motorsports is the best outcome for local residents who have suffered for nearly a decade while the stadium has been left to deteriorate, and the overwhelming majority of the local community, who have also made it clear they do not support housing development.

"The Campaign Group and the consortium recognise the inconvenience and trauma that the closure of the stadium has caused and undertake that on taking control, the first priority would be to secure and tidy up the site."

SCS is encouraging supporters to back a policy in Rugby Borough Council's new Local Plan – which is currently under public consultation – supporting the restoration of Coventry Stadium for motor sports and blocking future development proposals.

The Local Plan consultation period ends on May 19. Responses can be sent by email to localplan@rugby.gov.uk with 'Preferred Option Consultation' in the subject line, or by post to Preferred Option Consultation, Development Strategy Team, Town Hall, Evreux Way, Rugby, CV21 2RR. Names and addresses must be included.

Railway bridges to be checked

PREPARATIONS for routine safety inspections of railway bridges over the Great Central Walk in Rugby start next week.

Inspections have been scheduled for the Newton Lane Bridge, near the Newton Five Arches picnic space, the Newton Farm Track Bridge, and the bridge abutment on Staveley Way in Brownsover.

Ecological assessments have been carried out at

all three sites to ensure the work has no impact on nesting birds and other wildlife, ahead of vegetation clearance scheduled to start on Monday (May 19).

The inspections of all three bridges are set to take place during June and July, with security fencing erected to ensure pedestrian access to the Great Central Walk can be maintained during the work.

A spokesperson for

Rugby Borough Council said: "We operate a cyclical inspection and maintenance programme for the railway bridges over the Great Central Way in the borough, which were built around 125 years ago.

"While we aim to keep disruption at a minimum during the safety inspections, we ask for the public's patience and understanding while this important work takes place."

Spring Arrives

at the garden lover's garden centre

Harefurlong Nurseries
www.farnboroughgardencentre.co.uk

A traditional garden centre that focuses on providing quality plants, garden products, homeware and gifts

national Garden Gift voucher

AQUATIC PLANTS

TUB & BASKET PLANTS

VEGETABLE PLANTS

SUMMER BEDDING

Treasured Teddies
AT
FARNBOROUGH GARDEN CENTRE

Come & visit our Treasured Teddies shop & see our massive selection of cuddly collectables & furry friends including especially loveable limited editions and everyday huggables

A world of Choice

OPEN 6 DAYS A WEEK
Tues-Sat 9-5.30pm
Sun 10.30-4.30pm
Open Bank Holiday Mondays

On A423 Southam Road,
Nr Farnborough, Banbury, OX17 1EL
Tel 01295 690479
customersales@farnboroughgardencentre.co.uk

WHERE THINGS FOR YOUR GARDEN WON'T COST YOU THE EARTH

A 'musical force' who inspired so many to sing

TRIBUTE has been paid to man who brought music to Coventry and Warwickshire after he died following a cycling accident on his 32nd birthday.

Sebastian Farrall, who lived in Coventry with his wife Fran and their 21-month-old daughter Maisy, was a dynamic and much-loved conductor, composer, arranger, and musical director.

A fierce advocate for community music and inclusion, his loss is being felt deeply by his family, friends and the countless musicians and singers whose lives he touched.

Originally from Bristol, Seb came to study at Coventry University, graduating in 2014 with a first-class honours degree in music composition, and received the Robert Ramskill Composition Award for his significant contribution to the department.

Seb co-founded the MenCho Men's Chorus as part of his final university project, a move described by some as "foolhardy" at the time,

but one that ultimately launched a career defined by vision, risk-taking and success.

He co-founded Sing It Loud, an award-winning choir based in Leamington that has performed over 20 concerts in the past 11 years, including a tenth anniversary performance at Warwick Arts Centre featuring over 300 musicians and singers.

Rosie Sayers, chair and co-founder of Sing It Loud, said: "Seb was a musical force, brilliant, bold, and endlessly generous with his talents. He brought extraordinary energy and passion to every rehearsal and performance. But more than that, he believed in people. He believed in our abilities, even when we didn't. He saw potential everywhere and had the courage to bring his vision to life.

"His warmth, humour and inclusivity created spaces where everyone felt they belonged. He didn't just make music, he made magic. We've lost a truly irreplaceable friend and leader."



Seb was a musical force to be reckoned with.

In 2021, he was appointed as one of the Artists in Residence through the Methodist Central Hall's initiative to celebrate the City of Culture. His vision was to form a brand new full symphony orchestra that welcomed, not just polished musicians, but also those who hadn't played for years, and those who played instruments not usually found in an orchestra.

His work also extended across

many other choirs including Stoneleigh Ladies, Burton Green Village, Bad Vibrations, the Coventry Salvation Army Songsters, the school choir at Westwood Academy and the staff choir at Warwick University.

Seb was also a passionate performer, particularly as a percussionist. His playing took him to prestigious venues including the Royal Albert Hall and the O2 Arena.

His thanksgiving service, held on April 30 at the Methodist Central Hall in Coventry, was attended by nearly 1,000 people and viewed online by 3,400 more.

■ A GoFundMe page was set up shortly after Seb's death on March 30, in the hope of easing the burden for Fran and Maisy.

Visit gofund.me/a5f1e9 to donate.

Did you know that City Bathrooms has been installing quality kitchens for over 30 years?

Why not come and see for yourself with displays over three floors.

Bring in your measurements to our showroom or let us come out to your home at a time that suits you!

**SALE
NOW ON**

- 20% off kitchen
- Free dishwasher and free appliance pack with all supplied and installed kitchens
- 50% off bespoke glass splash back



Call us today to book a design appointment on **024 7636 5877**

£500 off with this advert on all fully fitted kitchens

City Bathrooms & Kitchens
024 7636 5877 | citybaths@gmail.com
www.city-bathrooms.com
158 Longford Road, Coventry, CV6 6DR

Barbers among sites targeted in crime raids

BARBER shops and convenience stores across Warwickshire were raided as part of a nationwide crackdown on high street crime.

One hundred and seventy counterfeit vapes, a large quantity of illegal tobacco and two kitchen knives were seized as part of the three-week operation. Three people were also questioned about their immigration status.

Warwickshire Police targeted 13 premises in Leamington, Warwick, Rugby and Nuneaton as part of Operation Machinize. A total of 265 "cash-intensive" businesses were visited across England.

Police secured freezing orders over bank accounts totalling more than £1million, executed 84 warrants and made 35 arrests. Fifty five people were questioned about their immigration status and a further 97 protected in relation to potential modern slavery.

Officers also seized more than £40,000 in cash, some

by Philippa Mingins

200,000 cigarettes, 7,000 packs of tobacco, over 8,000 illegal vapes and two vehicles.

Two cannabis farms were also found, containing a total of 150 plants. Ten shops have been shut, with further closures expected as a result of on-going investigations.

The National Crime Agency (NCA) estimates that £12billion of criminal cash is generated in the UK each year, which is typically smuggled out of the country or laundered in this country.

Police said cash-intensive businesses such as barber shops, vape shops, nail bars, American-themed sweet shops and car washes are often used by criminals to conceal the origins of illicit cash. Crime gangs mix legitimate funds with criminal profits to hinder subsequent law enforcement investigations.

The crackdown, which is part of the NCA's continued disruption of cash being laundered in the UK, involved 19 differ-

ent police forces and Regional Organised Crime Units, as well as national agencies including HMRC, Trading Standards and Home Office Immigration Enforcement. It was supported by the National Police Chiefs' Council and coordinated by the NCA's National Economic Crime Centre, which provided intelligence to assist local forces, as well as funding for operational activity.

Security Minister Dan Jarvis said: "High street crime undermines our security, our borders, and the confidence of our communities, and I am determined to take the decisive action necessary to bring those responsible to justice."

"This successful NCA-led operation highlights the scale and complexity of the criminality our towns and cities face and demonstrates our collective determination to make our streets safer, a key pillar of this government's Plan for Change. We will continue to support the NCA, and other law enforcement partners, as we make the UK an even more hostile environment for organised crime."



Tercentenary tours are under way at the Court House in Warwick.

Step back in time at Court House

THE DOORS of the Court House in Warwick are being opened to the public for tercentenary tours.

Unlocking Warwick, made up of town council volunteers, has resumed free monthly Court House tours for visitors and residents.

And this year the historic Court House will be celebrating its 300th year.

Visitors can look around the Grade 1 listed building in July

Street – the Old Court House, Town Hall and Visitor Centre - while guides tell its long history from being built in 1725 after the Great Fire of Warwick.

Unlocking Warwick's Rick Thompson said: "This will be our ninth year of conducting summer tours round the Court House. During the tours, as well as talking about the Court House, the guides will relate stories of some of

the big personalities that shaped Warwick after its founding in the tenth century by Aethelflaed, the Anglo-Saxon Lady of the Mercians."

Forthcoming tours take place on May 31, July 5 and July 26, August 30, and during Heritage Open Days on September 13 and September 20.

Reserve a place on the tour by calling the visitor centre on 01926 492212.

Retirement Villages is part of AXA IM Alts

New homes to buy and rent

Say 'hello' to retiring differently at **Lime Tree**

📍 Dunchurch, Warwickshire

RETIREMENT VILLAGES

Enjoy catch-ups in the clubhouse, morning walks through the grounds, and trying new hobbies. Join us for coffee and cake, explore the fantastic facilities, meet the team and find out more about what life could be like for you. Say 'hello' to retiring differently, at Lime Tree.

Reserve your spot at our **Discovery Day** Wednesday 4th June, 10am-12pm

Reserve your place here

Places are allocated by appointment only, so book yours to join in!

01788 462 214
limetreevillage.co.uk



Last year's winning photo, *Sleeping Ladybird*, taken by Steve Blake.

Well-known face joins celebrations

THE SO-CALLED 'bad boy of celebrity photography,' Rankin, was the focus of attention when he visited Leamington.

Rankin, who has photographed everyone from rock stars and sports stars to the late Queen Elizabeth, spoke at the Spa Centre as the guest of Leamington Spa Photographic Society.

It was part of celebrations to mark the 170th anniversary of photographic pioneer Henry Peach Robinson, one of the country's first portrait photographers, opening his photographic studio in Leamington in 1855.

Moving up to date, Rankin is a world-renowned photographer who has taken iconic off-the-wall portraits of celebrities including David Bowie, the Rolling Stones, Lewis Hamilton, Madonna, Vivienne Westwood and top models including Kate Moss.

He has produced campaigns for brands such as Rolls Royce, presented TV programmes including *The Great British Photography Challenge*, the documentaries *America in Pictures*, *Africa in Pictures* and *Seven Photographs that Changed Fashion* for the BBC.

His work has appeared in magazines and galleries around the world, but he also dedicates his time to supporting a variety of charities – Oxfam, PETA and McMillan Cancer Support among others.

Peter Chappell, chairman of Leamington Spa Photographic Society, said: "We have had some



notable speakers in recent years, but none so well-known outside photographic circles as Rankin, who is recognised as the most famous portrait photographer in the world.

"I believe it is a reflection of the high reputation of LSPS that we have been able to attract such an iconic speaker. We are delighted to have partnered with Warwick District Council's Arts Section to bring this once-in-a-lifetime opportunity to local schools and our wider community."

Rankin also brought his 'Rankin Live' event to Leamington in the

afternoon, which was held at All Saints Church, where he produced some creative portraits of several LSPS members.

Rankin added: "It was a pleasure to visit and meet so many passionate creatives. The vibrant creative scene is evident, and I look forward to returning."

Peter Chappell and Mark Godfrey of Leamington Spa Photographic Society with Rankin. Picture by Claire Hutchinson.

Take steps to enter

BUDDING snappers can enter Leamington in Bloom's annual photography competition.

Photographers of all ages are invited to submit a photo on the theme of 'Where I Walk'.

It could be anything from a beautiful garden on the way to work to nesting swans on a Sunday walk, as long as the location is within the town's boundaries.

Pictures taken using AI technology are not permitted.

The photographer whose image is chosen as the overall winner will receive £50. The second and third

place runners-up will win £35 and £20 respectively and all three winning shots will feature in the 2026 Leamington in Bloom calendar.

The winners will be invited to a Leamington in Bloom celebration event, hosted by the mayor later this year. A further 11 highly commended shots will also get a place in next year's calendar.

The closing date for entries is Friday August 29.

Entry forms can be obtained by emailing Kay Sheriston, deputy town clerk, at admin@leamingtontowncouncil.gov.uk or by calling 01926 450906.

INTERNATIONAL METALS & CABLE RECYCLING LTD

We purchase all Ferrous and Non Ferrous Metal Batteries and Cables

Collection Service Available

Long Marston Road, Long Marston, Stratford Upon Avon, Warwickshire, CV37 8AQ

01789 721 288

david@imrltd.co.uk

Open Mon/Fri - 8am - 5pm



**50% OFF
EVERY
WEEKEND**
when you spend £15

**SAVE
UP TO
£15**

**THE TAKEAWAYS
YOU LOVE, IN A TAP**

*Offer available Friday-Sunday between 9am and 11.59pm. Offer ends 11.59pm on 25th May. Min spend £15, maximum discount £15. Subject to availability. Selected restaurants only. Certain products excluded. Geographical restrictions, service and delivery fees apply. For full T&Cs see deliveroo.co.uk/terms.



Beyond the Canvas - A Celebration of British Sculpture from The Ingram Collection has received rave reviews since opening at Rugby Art Gallery and Museum.

Gallery exhibition turning heads

AN 'EXTRAORDINARILY good' exhibition at Rugby Art Gallery and Museum has been attracting rave reviews from visitors since opening its doors.

Beyond the Canvas - A Celebration of British Sculpture from The Ingram Collection brings together works from one of the UK's most celebrated collections of modern British art with pieces from the borough's own renowned Rugby Collection of 20th century and contemporary art.

Since opening on March 1, the exhibition has received a flood of positive feedback from visitors,

including 'what a gem,' 'extraordinarily good,' 'fabulous,' 'best experience at the gallery,' and 'I've been three times now and I keep coming back and seeing more.'

Beyond the Canvas, which runs until June 6, explores the rich and varied history of British sculpture throughout the 20th century.

Artists featured in the exhibition include leading luminaries such as Barbara Hepworth, Elisabeth Frink and Eduardo Paolozzi, together with young and emerging talent such as Yibei Liu and Lucy Gregory, both recent winners of The Ingram Prize.

Each sculpture on loan from The Ingram Collection has been displayed with complementary paintings and drawings from The Rugby Collection, encouraging visitors to look 'beyond the canvas' and explore the connections between the 2D and 3D pieces.

Katie Boyce, Rugby Art Gallery and Museum's senior exhibitions and programming officer, said: "Beyond the Canvas brings together works from the celebrated Ingram Collection with pieces from our very own Rugby Collection of contemporary art, exploring the connections

between the collections and giving audiences a new perspective on the pieces on display.

"We're delighted to have partnered with The Ingram Collection for this special exhibition, part of Rugby Art Gallery and Museum's 25th anniversary programme, and we're looking forward to welcoming visitors to Beyond the Canvas during the Easter holiday."

The Ingram Collection was founded by entrepreneur and philanthropist Chris Ingram in 2002 and in 2016 the majority of the collection was donated to The Ingram Art

Foundation, established and funded by Ingram to fulfil his ambition of making modern British art widely available for public display.

The Rugby Collection was established by the council in 1946 and now comprises more than 200 pieces.

Visit www.ragm.co.uk for more information about exhibitions and events at Rugby Art Gallery and Museum, and its Easter holiday programme of creative activities for children.

Visit www.ingramcollection.com for more on The Ingram Collection.



PRESTIGE DENTAL CARE
THE GENTLE DENTAL CENTRE

ACCEPTING NEW NHS PATIENTS EMERGENCIES THE SAME DAY

- Open till late and weekends
- Multi lingual teams (polish, romanian, arabic, mandarin)
- Male and female clinicians
- Nervous patients welcome
- 0% finance available
- Invisalign clear aligners from £2,300 per arch
- Dental implants from £1,800 per tooth
- Modern equipment and techniques



**Invisalign
clear aligners
from £2,300
per arch**

**Modern
Equipment
and
Techniques**



**Dental
implants
from £2,800
per tooth
inc Crown**

Prestige Dental Care
1-5 Church Way,
Bedworth, CV12 8NA

Telephone: 02476 314912 | 02476 319008
Website: <https://gentledentalcentre.co.uk>

THE BED FACTORY

SPECIALISTS IN BEDS AND MATTRESSES FOR PEOPLE WITH BACK, SHOULDER OR HIP PAIN.

SALE NOW ON

The Harrison Handmade Beds

KING FOR DOUBLE
on all complete beds from Harrison.



Complete Range of Harrison FR **Chemical Free** Beds on Show

Special Price Ottoman

FREE HEADBOARD



Single £449 • Double £499
King £599 • Super King £699

Sutton Wooden Frame Hand Made Frame



Single £339 • Double £419
King £469 • Super King £589

1 WEEK DELIVERY ON ELECTRIC BEDS

FREE AT HOME SELECTION AVAILABLE



5 POINT MASSAGE MATTRESS NOW AVAILABLE TO TRY IN STORE.

We are specialists in electric adjustable beds and have A Large Selection Available Starting From £999

Avon Fire Side Chair



£669.00

Special Edition 2 Drawer Bed Set

FREE HEADBOARD



3'0 was £449 now £389
4'6 Was £599 now £499
5'0 was £699 now £599

Bedroom Furniture



Full Range of Bedroom Furniture Available

Celebrity studio in store



Mammoth Ultimate Health Mattress
5'0 Pure Mattress or 2000 Limited Stocks
Reduced from **£2139**
TO JUST **£1599**

Helps reduce back, shoulder and hip pain

Mattresses	Support Chairs	Beds	Sofas
Riser Recliners	Electric Adjustable Beds	Corner Sofas	Headboards
Chests	Wardrobes	Pictures	Mattress Toppers
Lamps	Pillows	Duvets	Z Beds

Leamington's Largest Independent Bed Retailer

We can supply a large range of beds in 1 to 2 weeks - 3' Single Beds also available - WE SUPPLY WHEN OTHERS FAIL

139 Regent Street, Royal Leamington Spa, CV32 4NX

01926 422404

sales@thebedfactory.co.uk
and www.thebedfactory.co.uk

Trustpilot ★★★★★



General manager and curator Chris Kirby and volunteer Graham Roberts prepare the exhibition. Picture by Marcus Mingins 2025002MMR

Focus on the last days

THE FINAL days of the Second World War are explored in a new exhibition at The Fusilier Museum Warwick to mark VE Day.

Victory 80: The Royal Warwickshire Regiment and the End of World War Two, running until July 22, commemorates the 80th anniversary highlighting the role of Royal Warwickshire Regiment in the last crucial stages of the war, and focusing on key figures and the roles they played.

On display are rare objects linked to the surrender of Germany, including pieces of tile from Hitler's cloakroom in the Chancellery in Berlin.

The exhibition at the Pageant House museum in Jury Street also reveals the true story of how the regiment acquired a live antelope, its iconic mascot Bobby, from a Hamburg Zoo.

Visit fusiliermuseumwarwick.com for further details.

Brewing up a few memories

A TEA party was held at Rugby Art Gallery and Museum to celebrate the 80th anniversary of VE Day.

The party was attended by care home residents in the borough who took part in VE Day-inspired art workshops run by Rugby Art Gallery and Museum's Good Times project.

The project's team held workshops at Overslade House, Drovers House, Willow Tree and Granville House, where residents, relatives and carers explored Second World War objects from the museum's social history handling collection before creating bunting, collages of Union Jack flags, a decoupage tea service and crafty cakes made from sponges and felt.

A selection of the street party-inspired artworks has now gone on display at Rugby Art Gallery and Museum's community space in the venue's foyer.

And the following day, participants in the VE Day art workshops and care home staff were invited to a tea party to enjoy a brew and view the display - and were joined by Rugby mayor Simon Ward.

He said: "The Good Times project has been a real success story for Rugby Art Gallery and Museum, and I was delighted to chat to so many of the participants in the VE Day art workshops over a cup of tea and a biscuit.

"VE Day was a moment of spontaneous celebration across the nation, with people taking to the streets for hastily arranged parties and parades, and the display captures the spirit of that historic day 80 years' on."

Rugby Art Gallery and Museum launched



the Good Times project nearly a decade ago, offering free sessions specifically designed for adults living with dementia.

The craft sessions, tailored to tackle loneliness and increase social interaction, focus on a 'reminiscence box' containing objects from the museum's social history handling collection.

Each free session has a different theme, such as music, toys or clothes, helping to stir memories and start conversations.

The VE Day-inspired artworks remain on display at the museum's community space until May 25.

Visit www.ragm.co.uk/good-times for more information about the Good Times project.

Care home residents joined Mayor Simon Ward at a tea party at Rugby Art Gallery and Museum to celebrate the Good Times' VE Day-inspired art workshops.

VERTICAL **ROLLER** **VENETIAN**

ROMAN **SHUTTER** **INTU**

10 YEARS WARRANTY ON SHUTTER BLINDS

Available in beautiful and stylish Hard Wood and Faux Wood

WE WILL BEAT ANY LIKE-FOR-LIKE QUOTE

Visit us at: 21 Brixham Drive, Coventry, CV2 3LA
 Email: info@brixham-blinds.co.uk

Contact us today for a **FREE** no-obligation quotation

T: 02476 666686 brixham-blinds.co.uk

BRIXHAM

BLINDS

Residential and Commercial

Brixham blinds are a well-established blinds company offering to trade and consumer. With a great range of quality bespoke and made to measure blinds by an established blind company you can trust.

Whether you're thinking of vertical blinds, roller blinds, venetian blinds or roman blinds, shutter blinds, all of our blinds come with child safety regulations and fittings to make sure your home is safe.



FAR LEFT: A spot of face painting for Event Assistant Lillian Burridge and Chrissy Calvert. Picture by Marcus Mingins 2025012MMR4

LEFT: A traditional game of Hook-a-Duck. Picture by Marcus Mingins 2025012MMR1

RIGHT: Steve Davies printing 'pigeon of peace' cards. Picture by Marcus Mingins 2025012MMR2

BELOW: Maxine O'Brien and Sharon Batten selling vintage goodies. Picture by Marcus Mingins 2025012MMR5



Marking VE Day

RUGBY and Lutterworth celebrated the anniversary of Victory in Europe (VE) Day on Thursday (May 8).

The town got into the spirit at a vintage market at Old Market Place, to mark the 80th anniversary of the Second World War in Europe coming to an end when German forces surrendered.

The event included vintage garden games and face-painting, with World War Two re-enactors also on hand to help visitors step back in time to the 1940s.

Rugby Borough Council marked VE Day by flying a special 80th anniversary flag at the Town Hall, and lighting a Lamp Light of Peace – part of a nationwide campaign to mark the anniversary and remember those who fought for our freedom during the Second World War.

The council also plans to install VE Day and Victory in Japan (VJ) Day 80th anniversary memorial benches at the war memorials at Whitehall Recreation Ground and Hillmorton's High Street, together with a memorial bench near the silhouette statues of soldiers at Bilton's Assheton Recreation Ground.

The Hillmorton branch of the Royal British Legion (RBL) decided to hold evening events on the anniversary as it fell on a working day.

A short service of remembrance was held at Hillmorton War Memorial, beginning with lighting the Lamp of Peace.

The Hillmorton Ex-Servicemen's Club then hosted An Evening with Vera Lynn and friends, headlined by singer Amie Boyd with music from the Phoenix Ukelele Band and the Ukrainian Choir.





OUR BIG SALE IS STILL ON

INFLATION EVERYWHERE - BUT NOT AT CARPET MILL!

Everything is going up in price, the same for Carpets and this is why it pays to go to Carpet Mill. Manufacturers of yarn and other materials for making carpets have all had price rises and some manufacturers are busy changing their specifications to many ranges to compensate. They also get surplus rolls that they cannot sell to the big stores as they don't have enough stock left to service them.

Therefore, we are buying those rolls at a FAT DISCOUNT and passing it on to YOU.





BRAND NAME CARPETS AT LOW LOW PRICES

From quality Axminster to budget cord

We are recommended for our low prices, quality service and extensive range throughout the Midlands. There are no R.R. prices on carpets, so if others give 50% offers or sales discounts, is it 50% off their normal high prices. ALWAYS compare with Carpet Mills normal prices!!!!!!

Everything Reduced BE QUICK

CARPET MILL

CROMWELL STREET (OFF RED LANE) COVENTRY CV6 5EY TEL: (024) 7666 1985

SOME CUSTOMERS TRAVEL MILES - YOU DON'T HAVE TO - WE ARE HERE

www.salecarpet.uk

Zooming off into the sunset - Jeff Coope is retiring from the British Motor Museum.



Motoring into retirement

A LONG-SERVING British Motor Museum boss has zoomed off into the sunset.

Jeff Coope, a third generation automotive engineer, has retired after a notable career in the industry.

Jeff started in 1976 as an engineering apprentice with automotive supplier Lockheed and went on to work for British Aerospace, Honda, BMW and Ford.

In 1997 he moved from engine development to estate management, managing Jaguar Land Rover's 900-acre Gaydon research site, before joining the neighbouring British Motor Museum in 2002 as director of operations.

In this role, Jeff planned and implemented many projects that are now part of the DNA of the museum - from the creation of the collections centre and redesign of the museum in 2016, to the design and construction of a

driver training track in the museum grounds.

Appointed managing director in 2020, Jeff had a very clear vision - for the museum to become the global focal point of Britain's automotive history and culture.

Jeff said: "I have enjoyed taking the trust and the museum to a new level. We looked to new horizons and are well on the way to becoming a museum truly representative of all British manufacturers. During my time, we have increased our appeal to visitors, enthusiasts and institutions with new products, events and facilities and I am pleased to leave the museum with a very bright future ahead of it."

The recruitment of a new CEO is already under way and, in the interim, the museum is in the hands of finance director Adrian Managhan.

Classic cars are headed this way

CLASSIC cars from across the Midlands will be parking up in Leamington next month.

The annual Cars at the Spa (CATS) festival, a major fundraiser for Leamington Rotary Club, takes place at the Pump Room Gardens on June 1.

Rotarian Simon Evans, who chairs the show's organising committee, said: "CATS has become a regular event in the town and last year we raised £5,000. People's generosity can be amazing at times and we hope this year's event will be even bigger and better, especially as our Rotary club is celebrating its 100th anniversary."

"I would like to thank Startin Kia Warwick and Motor Hub Warwick for agreeing to be our generous headline sponsors again, and also Leamington BID for helping finance the event."

Visitors will be able to see some 300 cars and to enjoy live entertainment throughout the day, plenty of food and drink stalls and a dedicated picnic area. The event is free and runs from 10.30am to 4pm.

Rotary president Linda John added: "We had a big increase in visitors last year as people came from far and wide to enjoy one of the town's loveliest parks, listen to the entertainment, picnic on the grass by the river, buy snacks and drinks and, of course, admire the stars of the show - hundreds of classic cars."

"I would also like to thank all those who



have advertised in this year's programme, our army of Rotary volunteers and those members of the public who generously donate money on the day."

Richard Roberts, dealer principal of Startin Kia Warwick, said they were pleased to sponsor the event again.

He added: "Leamington Spa Rotary Club does tremendous work in raising money for charity and we are looking forward to supporting the show again this year."

Visit www.carsatthespa.co.uk for details.

Revving up for this year's Cars at the Spa festival.



SPRING SALE



Riser Recliner Chairs from £399.99

4 mph Boot Scooter

Up to 8 miles range
Easily transportable



£599.99 Save £200 was £799.99

4 Wheel Walker

Folding Rollator
Padded Seat



£79.99 Save £60 was £139.99

12" GRAB BAR VOUCHER
JUST £9.99

HANDY GRABBER VOUCHER
JUST £9.99

FOLDING WALKING STICK 1/2 PRICE
£9.99
WAS £19.99

3 WHEEL WALKERS FROM
£69.99

COMMODOES FROM
£49.99

CALL TO BOOK YOUR SCOOTER SERVICE

02476 630444

Max Mobility Ltd, 7 Sherbourne Arcade, Coventry, CV1 1DN (opposite Home Bargains)
www.maxmobilityltd.co.uk

Pictures for illustration • Prices with VAT Exemption

SPRING HAS SPRUNG GODIVA CARPETS MAY MADNESS SALE IS STILL ON

To view the finest 'FLOOR SHOW IN TOWN'

with LUXURY at every day prices to put a SPRING in your step

Pop in to see their extensive range of Carpets,
Wooden Flooring, Vinyls, Laminates and Rugs all at

DISCOUNTED PRICES

that will suit every pocket and every budget

Top Brands to order, and over 200 rolls in stock,
that are ready to go now - Remnants from only £5

No 'APRIL' fooling around...

Our Customers love our Service, Prices, Free Planning
and Measuring Service and you will too!



Because Godiva Carpets have been fitting carpets and flooring in homes and businesses across Coventry and Beyond for over 70 years, they have tremendous buying power, which means they can offer you

LOW, LOW Prices, allied to GREAT, GREAT Service

Whether you are looking to make your rooms beautiful with a touch of class, or if you are looking for something cheap and cheerful at Godiva Carpets & Flooring

'We've got you covered'

Top Quality Wilton Royal to Branded Room size remnants to clear and ready to go
(No reasonable offer refused)

Landlord deals from only £24!



OUR NORMAL OPENING HOURS ARE
9AM TO 5.30PM MONDAY TO SATURDAY
(CLOSED ON SUNDAYS)

02476 551200

GODIVA CARPETS LTD, ARGYLE HOUSE, COLLINGWOOD ROAD,
EARLSDON, COVENTRY CV5 6HW

VISIT OUR ONLINE STORE WWW.GODIVACARPETS.CO.UK



Brintons

CAVALIER
FLOORING SYSTEMS

Lano
Carpet Solutions

Penthouse
Carpets

ABINGDON

INVICTUS
www.ulstercarpets.com

ulster
The original and the most popular easy clean carpet

WILTON ROYAL

AND MANY MORE LEADING BRANDS

GODIVA CARPETS

A family business trading since 1953





Rugby Antiques & Jewellery Valuation Day

Tuesday 20th May 12pm to 2pm

Valuations of Silver, Jewellery, Watches, Gold, Ceramics, Antiques and General Collectables.

Items may be left to be consigned into Auction

**The Black Horse
43 The Green, Bilton,
Rugby, CV22 7LZ**

Donations in aid of WCS Care



Free Home Visits | Estate Clearances & Downsizing

If you have a lot of items you want valuing, we offer a **FREE** home visit service where we can come to your home. Contact us for more info

T: Hansons Warwickshire 07470 459309

E: clivejones@hansonsauctioneers.co.uk

www.hansonsauctioneers.co.uk



Hansons Auctioneers, Etwall, Derbyshire, DE65 6LS

Revamped Charterhouse to open

by Ian Hughes
ian.hughes@bullivantmedia.com

COVENTRY Charterhouse, the National Trust's first visitor attraction in the city, will re-open to the public next week.

Earlier this year, Historic Coventry Trust, which owns the Charterhouse and oversaw its £11.9million lottery aided renovation, entered into a partnership with the National Trust, which will now take care of the day-to-day operations of the site.

The Grade I listed former Carthusian monastery – one of only nine ever built in England – is home to 15th and 16th century wall paintings, widely regarded as some of the finest surviving examples of medieval and Renaissance art in England. It will re-open on May 21.

Gurminder Kenth, general manager at National Trust, said: "As one of Coventry's oldest surviving medieval buildings, the Charterhouse



A new era will begin at Coventry Charterhouse when its re-opens to visitors on May 21. Picture by Historic Coventry Trust

is an extraordinary place with a rich story to tell, and we're excited to open our doors for visitors to explore its layered history.

"Together with the highly experienced individuals we've welcomed into the fold as we prepare to

reopen, we've been overwhelmed by the huge level of support and enthusiasm from locals coming forward to volunteer as we enter this next chapter together with the Charterhouse.

"Volunteers are at the heart of

everything we do at the National Trust and as we've already seen from our constantly growing team at the Charterhouse, the passion to support this new chapter for the Charterhouse has been remarkable.

Jennie Rutte, manager at Historic Coventry Trust, said the re-opening on May 21 marked an important step forward for the Charterhouse and for Coventry's heritage.

"By working in partnership, National Trust and Historic Coventry Trust are creating a sustainable future for one of the city's most treasured historic buildings – not just as a visitor attraction, but as a welcoming space for the whole community," she added.

Visitors are invited to join the Festival of Blossom during May half-term, and have a go at family-friendly blossom crafts.

Visitors can also enjoy guided tours of Charterhouse interiors.

They can also explore a landscaped walled garden, a wildlife pond, community orchard, children's play area, and park.

A 60-seat cafe will also open. Visit www.nationaltrust.org.uk/visit/warwickshire/coventry-charterhouse for opening times and further information.



Bikefest revved up for day of high-octane fun

ENGINES are revving up for Rugby Bikefest on Sunday (May 18).

The high-octane, free, family event, running from 10.30am to 4pm, will feature a ride-in, bike displays, stalls, live music, children's activities, arena displays, Extreme Wheelie show, funfair and food.

One of the highlights of the

day is the 'Ride-in', around 10.30am, when hundreds of bikes will roar into the town centre.

This year's music line-up – on two stages in Market Place and Church Street – includes performances from Blues Extra, The Mutineers, The Soul Revival, Bright Black, The Rooters, Rugby Electric Guitar Orchestra, Big Family,

Trust Club, The Jellyheads and White Men Can't Funk.

The event is organised by Rugby First, in collaboration with local motorcycling groups, musicians and Rugby Borough Council.

Visit rugbyfirstevents.org.uk/rugby-bikefest for full details.

Bikers are revving up to roar into Rugby on Saturday.



PHOENIX COACHES

	Adult	Child		Adult	Child
May			June		
17th National Memorial			16th Bakewell	£25.00	£20.00
Arboretum & Litchfield	£25.00	£20.00	24th Pub Lunch	£30.00	£24.00
27th Shrewsbury	£25.00	£20.00	28th Hampton Court.....	£58.00	£50.00
28th Fantasy Island			July		
Ingoldmells	£27.50	£22.00	5th Skegness.....	£27.50	£22.00
29th Lunch & Entertainment	£36.00		8th Melton Mowbray.....	£25.00	£20.00
June			12th Wellesbourne Market ...	£15.00	£12.00
7th Bath.....	£29.00	£24.00	19th Southend-on-Sea	£29.50	£24.50
14th Liverpool & Afternoon			29th Bury Market.....	£27.00	£22.00
Tea Cruise	£49.00	£37.00	31st Weston-super-mare	£27.00	£22.00

Scarborough - The Boston Hotel 28th July-1st August 2025

5 Days/4 Nights £375 Per Person

Price Includes All coach travel, 4 Nights accommodation, evening meal & Breakfast, Day excursions, Steam train & Cream Tea

Paignton - Queens Hotel 8th-11th August 2025

4 Days/3 Nights £325 Per Person

Price Includes All coach travel, 4 Nights accommodation, evening meal & Breakfast, Day excursions, Boat trip around Dartmouth & Visit to Brixham, Bicton park Botanical Gardens & Cream Tea

Normandy- Ibis Styles Oustreham 15th-19th August 2025

5 Days/4 Nights £496 Per Person

Price Includes All coach travel, 4 Nights accommodation, breakfast, entrance to Normandy Museums, English & American Cemeteries, 1 evening meal in a Restaurant

www.phoenixcoaches.org.uk

Tel No 02476 350 811. 50 Southfield Close, Nuneaton. CV10 OBE

ARBURY HALL NUNEATON SPRING BANK HOLIDAY OPENING



The Hall, Gardens and Stable Tearooms will be open on Sunday 25 May & Monday 26 May 2025 from 1pm until 6pm (last tour 4.30pm)

Dogs on leads are welcome in the gardens.

For further details - 01676 540529

www.arburyestate.co.uk



KENILWORTH

Crackley Lane,
Kenilworth CV8 2JS

☎ 01926 852673

Kenilworth Tennis Squash & Croquet Club



Open 7 days a week

Beginners courses – Coaching
Social play – Mix ins
Competitions – Juniors
Club nights – Social events

Affordable plans !

- Pay monthly
- Pay annually
- Pay and play!

JOIN US !

- Tennis
- Padel
- Squash
- Croquet
- Cafe/Bar

Family Oriented
All Welcome
Ample free parking

Make lasting friendships
and memories !



🌐 www.ktscc.co.uk

✉ membership@ktscc.co.uk

Leftovers a perfect recipe for quilt



ONE lucky visitor to Chedham's Yard this weekend will be taking home a 'strippy' quilt.

The quilt has been specially made by Philip Anderson to be given away at the historic Wellesbourne wheelwright's yard tomorrow (Saturday).

Any visitor who would like to own the quilt can have a go at guessing how many pieces of fabric were used to make it. There is no charge to enter the competition and the nearest guess wins the 'strippy quilt' – which is a recognised patchwork term.

Philip said: "It's a way of using up a random selection of left-over pieces.

"The pieces are cut into strips, thrown into a bag and then drawn out as they come to hand. No planning or deliberate design is involved."

But the result has been the creation of a unique and washable quilt. Visitors can also see and find out about

All wrapped up – Philip Anderson with volunteer Eleanor Apps. Picture by Janet Hall

traditional 'charm quilts', another variation on the re-cycling theme.

Re-using old stuff is nothing new at Chedham's Yard. The yard's surviving

Victorian accounts book contains frequent references to the wheelwrights fitting 'second hand' items such as wheels, axles, hoop 'tires' and strakes.



COVENTRY YOUTH OPERETTA GROUP
presents


ME AND MY GIRL



This amateur production of ME AND MY GIRL is presented by arrangement with Concord Theatricals Ltd. www.concordtheatricals.co.uk

12TH – 15TH NOVEMBER 2025

The Albany Theatre, Coventry





AUDITIONS

THURSDAY 22ND MAY 2025

A youth group aged between 8-21 with a love of musical theatre.

Do you like performing – ACTING, SINGING AND/OR DANCING and would like to join a fun group then audition for ME AND MY GIRL – YOG's November Production!

We have New Members Auditions on Thursday 22nd May 2025 from 6.30 pm.

For more information or an audition slot please
EMAIL: yog.coventry@btinternet.com

Russell Lane

The Jewellers of Warwick

ARE HOLDING A FREE VALUATION EVENT FOR THE MONTH OF MAY

Russell Lane Jewellers have been established for over 50 years with expert knowledge of jewellery; antique and modern.

With the jewellery prices rising and the current uncertainties in the financial world, the value of jewellery has increased dramatically, and a significant percentage of jewellery is potentially undervalued, meaning it could threaten your ability to replace cherished items. Have your precious items that you wish to find more information on regarding age or value or simply unsure on what things are.

Russell Lanes are running a **FREE** verbal appraisal event during **THE MONTH OF MAY**

Come along for your **FREE** appraisal where you can satisfy your peace of mind.



JEWELLERY VALUATION EVENT

Tel: 01926 494 494 | Email: sales@russell-lane.co.uk
2 High Street, Warwick CV34 4AP

THE OLDEST JEWELLERS IN WARWICK
Website: www.russell-lane.co.uk



Is your child's car seat fitted correctly?

Living Well site offers a healthy approach for all

RESIDENTS are being offered a helping hand to stay healthy.

Warwickshire County Council's (WCC) Living Well website features information and services that encourages people to take preventative measures to keep themselves safe and well.

WCC health chiefs say that by having the knowledge and confidence to make healthier choices, residents can bring about positive changes such as adopting a healthier diet, engaging in regular physical activity, and quitting smoking.

These positive changes can significantly improve an individual's overall well-being by reducing the risk of chronic diseases, enhancing mental health, increasing lifespan, and leading to a more fulfilling and energetic life.

For residents who feel their mental health could do with a lift or want to get out of the house for fresh air and exercise, consider reaching out to friends or family, joining a group, or volunteering to make new connections. Building a support network with family, friends, and the healthcare community can be incredibly beneficial. Warwickshire Community and Voluntary Action (CAVA) offers a local volunteering programme across the county.

Volunteering is a fantastic way to meet new friends and connect with like-minded individuals. Those involved can choose how much time to dedicate, helping them on a

journey to better health.

As people age, immune systems become weaker and can make people more susceptible to viruses and bacterial infections. Stay alert for signs of infection, as some may be less obvious than others. To recover more quickly, ensure to get plenty of rest, sleep well, keep warm, and drink plenty of fluids to avoid dehydration.

Pete Sidgwick, WCC director of social care and support, said: "The Living Well website is an excellent resource for anyone who is health aware and looking to maintain their wellbeing as they age."

"It offers a wealth of tips and advice on enhancing mental health, physical health, and overall wellbeing."

"The healthy aging section provides valuable information and practical support on eating well, staying active, keeping your brain healthy and stimulated, and maintaining independence - all crucial for feeling your best."

"We want all residents to be healthy, happy, and independent, regardless of age. Living Well provides the support needed to continue enjoying life and directs individuals to the appropriate health and social care services in Warwickshire. I encourage all residents to explore the website and discover how it can benefit them."

Visit www.warwickshire.gov.uk/livingwell to find out more about the resources available and how to access them.

CHILD car seat checks are available in Warwickshire later this month.

People can receive free seat checks and vehicle maintenance advice at events hosted by Warwickshire Road Safety Partnership during the half-term holiday.

The aim is to raise awareness about the importance of correctly fitted child seats to reduce avoidable casualties, as well as provide information and advice on choosing, buying and installing car seats.

The event is also being supported by Warwickshire Fire and Rescue who will be in available to offer maintenance advice, including checking tyres, oil, and screen wash levels and supporting drivers with completing these checks themselves.

Events are taking place at Asda in

Chapel Street, Rugby, on May 27, Tesco in Birmingham Road, Stratford, on May 29 and Asda in Chesterton Drive, Sydenham, Leamington, on May 30.

Mark Ryder, Warwickshire County Council's communities spokesperson, said: "Child car seat safety is very important, and we want to ensure that Warwickshire parents know how to fit their child's car seat correctly in their cars. Having correctly fitted car seats can help to keep children safe during car journeys."

"To ensure you are following the law, the government has set out a guideline such as making sure to check the child car seats are suitable for your child based on their height and weight."

Questions about care? We can help

We know moving into residential care is an emotional and difficult decision with lots to think about.

With over 30 years' experience, we can help you navigate the process of finding the right care home, so that you feel confident about the decision you make – whether that's choosing a WCS Care home, or one outside our group that's more suited to your needs.

If you've got questions about care, or one of our care homes, our Trusted Advisors can help.



Philip Rainsford



Drovers House, Rugby
 ☎ 07802 728447
 ✉ p.rainsford@wcs-care.co.uk

Westlands, Rugby
Dewar Close, Rugby
 ☎ 07802 728443
 ✉ j.rugg@wcs-care.co.uk



Josephine Rugg

US trade deal will 'help counter uncertainty'

A NEW trade deal with the USA will alleviate some uncertainty for businesses in Coventry and Warwickshire.

This is according to the Coventry and Warwickshire Chamber of Commerce after the UK became the first nation to sign a historic trade deal with the USA in Donald Trump's second term as President.

Chamber chief executive Corin Crane said: "There has been a lot of uncertainty, not only for businesses who trade in the US but also for those who trade in the UK and other parts of the world, so securing this deal is positive and will hopefully alleviate some of this.

"It is encouraging to see that the tariffs on UK steel and aluminium have been removed, and tariffs faced by the automotive industry have also been revised to 10 per cent for the first 100,000 cars exported to the US - something which will have a particularly positive impact for us in the Midlands and give the sector some much-needed clarity.

"But there is still work to be done to enhance the deal and free up trade conditions further.

"We have a strong, resilient economy, and as a Chamber, we will be doing everything we can to support businesses across Coventry and Warwickshire to

Coventry and Warwickshire Chamber of Commerce chief executive Corin Crane welcomed the trade deal with the USA.



navigate the new deal.

"Most importantly, this may give us some of the stability our local business community have been craving, as long as nothing changes, they can start to plan. Fingers crossed nothing changes!"

Shevaun Haviland, director general of the British Chambers of Commerce, was equally positive.

He said: "This deal will be

met with a huge sigh of relief by many British businesses.

"The reduction in the 25 per cent tariffs on most of our automotive exports and the removal of levies on steel and aluminium are the biggest wins.

"The news on aerospace, including jet engines is also good news, as is additional protection from tariffs on our pharmaceutical sector.

"But this must not be the end

of the process; we must continue to push the argument for free and fair trade across all economic sectors and that tariffs are a lose-lose position.

"There is a high-level of co-dependency in our economic relationship, and it is in both our interests to continue building upon those strong foundations which have developed over decades."

Spotlight is on future of gaming world

THE TALENT and creativity of Warwickshire's gaming industry will once again be in the spotlight in Leamington this summer.

The Interactive Futures free networking and careers event will return for the sixth year to the Royal Spa Centre in Newbold Terrace on June 13 and 14.

Warwickshire County Council is teaming up with The Game Dev Group and Warwick District Council to showcase the Warwickshire Games Collective and highlight the wide range of skills and services of game developers to businesses and enthusiasts from across the UK.

The Friday will be devoted to business and professional development and aims to connect developers with business opportunities, industry insights and offer advice for innovative creatives looking to connect with the vast array of studios within the region or work in the gaming industry.

Alongside the popular expo, between 10am to 4pm, there will be a speaker programme covering everything from gameplay to obtaining investment.

The Saturday focus will turn to students, their parents and those looking for prospective career changes to find out what the games industry has to offer and to attract the next generation of talent to the sector.

Visit www.interactive-futures.com for more information.

OFTEN IMITATED BUT NEVER EQUALLED

While all costs are going up - OURS ARE STAYING DOWN

Due to our customer friendly services of No Door Salesmen, No Showroom and little overheads



NEW FLUSH WINDOWS

BEAUTIFUL COMPOSITE DOORS
Fully fitted
Competitive Prices

UPTO 30% OFF ALL WINDOWS



ALL PRODUCTS HAVE A 10 YEAR INSURANCE BACKED WARRANTY



BILL MOORE'S WINDOWS AND DOORS

A NAME YOU CAN TRUST

1 Brookside Close, Stratford-upon-Avon, Warwickshire CV37 9PL

01789 415171 • 07729 689239 • www.billmooreswindowsanddoors.co.uk



Two minds, one creation - Elysia Sully as Mary Shelley and Jack Ives as the Monster. Picture by Robert Warner.

Taking a look beneath the monster's skin...

MARY Shelley tells a monster tale at Kenilworth's Talisman Theatre this month.

A new production of Mary Shelley's Frankenstein, puts the author herself at the heart of the action.

As Shelley, played by Elysia Sully, wrestles with the terrifying ideas taking shape in her imagination, audiences see a young woman defy the expectations of her era – and conjure one of the most enduring horror stories of all time.

Joining Shelley on stage are Adam Turner, as the tormented

scientist Victor Frankenstein, and Jack Ives, as the Monster.

Director Kathy Buckingham-Underhill said: "This is a Frankenstein for anyone who has ever wrestled with their own voice – or been told they shouldn't have one.

"Rona Munro's script lets us see Shelley not just as a writer of genius, but as a woman full of conflict, urgency, and courage. It's exhilarating."

The production runs from May 19 to 24.

Visit www.talismantheatre.co.uk for further details.

Theatre opens the curtains to young

Young people tread the boards in a past production of Oliver! at the Loft Theatre.



THE CURTAIN is going up on a brand new youth theatre ensemble in Leamington.

For 50 years the Loft Theatre Company has hosted external youth theatre practitioners, but now, for the first time, it is launching its own youth ensemble for young people aged seven to 17 to explore making theatre in all its forms.

The Loft Youth Theatre Ensemble aims to provide an opportunity for young people with an interest in theatre arts to explore performance techniques and theatre skills with industry professionals.

Founded by movement director Dan Walsh and actor and performance artist Laura Hayward-Smith, young people will be able to attend a series of weekly workshops.

Sue Moore, artistic director of The Loft Theatre, said: "Theatre is potent and has the power to shape development in the young in profound and lasting ways."

The Loft Youth Theatre Ensemble will be officially launched in September.

Workshops will be every Saturday morning during term time at The Loft Theatre.

Free taster sessions are available

in May and June, and there will be a summer holiday camp in August.

Visit www.lofttheatrecompany.com for more details.

■ The Talisman Theatre in Kenilworth is looking for volunteers to join its ushering team.

Ushers are the friendly face greeting theatre-goers, scanning tickets, showing ice creams, and ensuring everyone has a fabulous night out.

No previous experience is needed.

Email Sue Ison-Jacques at fohmanager@talismantheatre.net for further details.



Thinking about retirement?

Get your finances in order with award-winning independent financial advice in Leamington Spa.

Book a free retirement planning consultation with one of our experts today!

☎ 0800 6342 111

✉ office@simpsonfs.co.uk

🌐 www.simpsonfs.co.uk

Find out more



Follow us    

RCN BEDS FURNITURE

Ottoman Beds



Corner Sofas



Huge selection of BEDS in Stock



Electric Beds



Mattresses from £89



WE HAVE COVENTRY'S BEST FURNITURE AND BED SHOWROOMS. COME AND SEE US TODAY!

Oak Furniture



Bedroom Furniture



Riser Recliners



Carpets



OPEN 6 DAYS A WEEK

Henley Road, Coventry, CV2 1AB

02476 603254



Recession buster furniture deals





Discovering the Electric Evenings of Coventry, Rugby and Leamington Spa

When the sun dips below the skyline and the lights flicker on, something special happens across Coventry and Warwickshire.

As daylight fades, a vibrant after-hours world awakens, a celebration of culture, connection, creativity, and community. Whether you're a curious visitor, a city dweller seeking something new, or a student making memories, the nighttime pulse of Coventry, Rugby, and Leamington Spa has a rhythm all its own.

Each of these towns carries its own unique character, but what they share is a buzzing, evolving

nightlife that reflects the energy and diversity of their communities. From modern bars with eclectic atmospheres to historic pubs steeped in storytelling, late-night cafés where ideas flow as freely as the coffee, and intimate theatres where creativity comes alive, there's an unmistakable magic to evenings spent here.

Coventry: Culture Reimagined

Coventry's after-dark revival has been a key part of the city's reinvention. Once known mainly for its industrial legacy, today it thrives with cultural depth and youthful dynamism. As a university city with a growing student population,

there's a constant energy in the air. This has led to a thriving scene of student-friendly venues, creative spaces, and late-night hangouts that cater to a wide range of tastes and styles.

As evening falls, independent cinemas and fringe theatres spring into life, offering everything from arthouse films and documentaries to spoken word and experimental performance. The city's arts quarter offers a mixture of late-night galleries and performance venues that often blur the boundaries between bar, stage and studio. For the night owls, many venues host live music, poetry nights and open mics, spaces where students, locals, and visiting artists come together to celebrate creativity in all its forms.

Food and drink are also at the heart of Coventry's nightlife. The city boasts a selection of late-night eateries where diners can enjoy

anything from world cuisine to local favourites — all served in a mix of sleek modern settings and repurposed historic buildings. The pub scene offers everything from traditional settings with cosy firesides to lively taprooms pouring local craft beers and ales. It's a city where the past and present fuse beautifully, and that tension is at its most compelling after dark.

Rugby: Proudly Independent, Genuinely Welcoming

Rugby might be world-famous for its sporting heritage, but it's also a town that knows how to unwind in style. Compact, characterful and proudly independent, Rugby's evening atmosphere offers a refreshing change of pace — where personal service and local knowledge make a night out feel more like an invitation into the community.

Its pubs, many of which have centuries of history etched into their beams, are more than watering holes, they're social hubs. There's a sense of authenticity here, where conversation matters as much as the drinks list. Whether you're watching live folk music in a timber-framed snug or enjoying a quiz night with the locals, the town offers a warmth that larger cities often lack.

Cafés stay open late for post-show chats, casual dates or long-overdue catchups, offering something more relaxed than a bustling bar. With Rugby's growing interest in the arts, its independent cinema and theatre scene is blossoming. Visitors can find everything from classic films and modern reimaginings to local drama and immersive storytelling — often paired with drinks and a bite to eat under the same roof.

Students from nearby institutions often find Rugby a quiet gem for socialising, a place that balances energy with authenticity. Whether it's late-night comedy, acoustic sets, or simply a long walk through the lit streets after dinner, Rugby has a knack for making even a simple evening feel special.

Leamington Spa: Stylish, Social, and Full of Surprise

Leamington Spa has long been known for its refined Georgian architecture and leafy boulevards, but don't be fooled — when the sun goes down, it reveals a different kind of charm.



WOW! EVENTS

ABBAOKE!

THE SING-ALONG ABBA EXPERIENCE!

VOULEZ-VOUS



Scan & Book

SAT 31 MAY
DOORS 7PM

hmv Empire, Coventry
BOOK NOW AT hmvempire.com

hmv
EMPIRE
COVENTRY

Promoter reserves the right to alter the programme. This is a tribute show and is no way affiliated with any original artists/estates/management companies or similar shows.

[woweventsuk](https://www.woweventsuk.com) [wowevents.uk](https://www.wowevents.uk)

AFTER HOURS in Coventry, Rugby and Leamington Spa

Stylish and social, the town comes alive after hours with a distinctly cosmopolitan flair. The town's nightlife reflects its diverse population. Student culture is strong here, thanks to its proximity to major universities, and it fuels a creative scene that includes everything from underground club nights to intimate improv performances. Expect rooftops with DJs, basement cocktail lounges with themed evenings, and bar takeovers that turn each weekend into a fresh experience.

Late-night cafés and dessert parlours are a signature feature in Leamington's evening landscape, perfect for a sweet treat or an espresso-fueled conversation after dinner. And for those who prefer a quieter vibe, there are wine bars and hidden speakeasies that offer refinement without pretension. Leamington's love for live entertainment is palpable. From cosy theatre productions to open-air performances in warmer months, it's easy to stumble across something memorable. Independent cinemas show cult classics and global cinema, often accompanied by Q&A sessions or curated menus, turning a movie night into an event in itself.

The town also offers a healthy selection of boutique hotels and stylish stays, making it easy to turn an evening out into a full overnight experience. Whether you're here for a romantic weekend or just need a relaxing place to crash after exploring the town's after-dark offerings, you'll find options that blend comfort with charm.

Across the Region: Why "After Hours" Matters

What links Coventry, Rugby, and Leamington Spa together isn't just proximity — it's a shared sense of pride in local culture, a



commitment to community, and a flair for making every night feel different. These towns have embraced a modern approach to nightlife that is inclusive, creative, and constantly evolving. It's no longer just about the traditional night out — though there's plenty of that, but about variety, vibrancy, and a celebration of everything that makes these places unique.

In a time when supporting local has never been more important, enjoying the region's nightlife means more than just entertainment. It's a vote of confidence in small businesses, creative professionals, and a thriving hospitality sector. Every theatre ticket, cocktail, late-night coffee, or live gig attended keeps the local scene alive, and there's never been a better time to dive in. So next time you find yourself looking for something to do after the sun sets, think local. Whether you're drawn to the energy of Coventry, the charm of Rugby, or the sophistication of Leamington Spa, there's a night out waiting that could surprise you, delight you, or even inspire you. All you have to do is step outside.

entertainers present

RADIO GaGa

THE ULTIMATE TRIBUTE TO QUEEN

SCAN & BOOK

Royal Spa Centre & Town Hall

FRI 6 JUN 7.30PM
LEAMINGTON SPA 01926 334418
BOOK: royalspacentreandtownhall.co.uk

EAT · DRINK · RELAX
EVERY MONDAY & TUESDAY
BOOKING RECOMMENDED

ANY **STARTER** · ANY **MAIN DISH***
 ANY **NAAN OR RICE** · & **COFFEE OR TEA**

£14.90 pp

*TISH & HONG PRAWNS £3.00 EXTRA PER DISH **PLAIN COFFEE



376 Kenilworth Road, Balsall Common, Coventry, CV7 7ER • Tel: 01676 533 308 • Email: admin@cafetamarinds.co.uk

www.cafetamarinds.co.uk

OPEN 7 DAYS A WEEK: Sunday - Thursday: 5:00pm - 11:00pm Friday & Saturday: 5:00pm - 11:30pm



Mental Health Awareness Week will place focus on 'community'

CHILDREN and young people across the Midlands have been receiving targeted mental health support.

The move came ahead of Mental Health Awareness Week which began on Monday and runs until Sunday (May 12 to 18).

Mental Health Support Teams (MHST), which operate in schools and colleges across the region, are specially trained NHS staff that offer help and treatment for children and young people with their mental health, anxiety and depression.

The theme of Mental Health Awareness Week this year – as set by the Mental Health Foundation – is 'community'.

The Midlands now has 121 Mental Health Support Teams in schools and colleges.

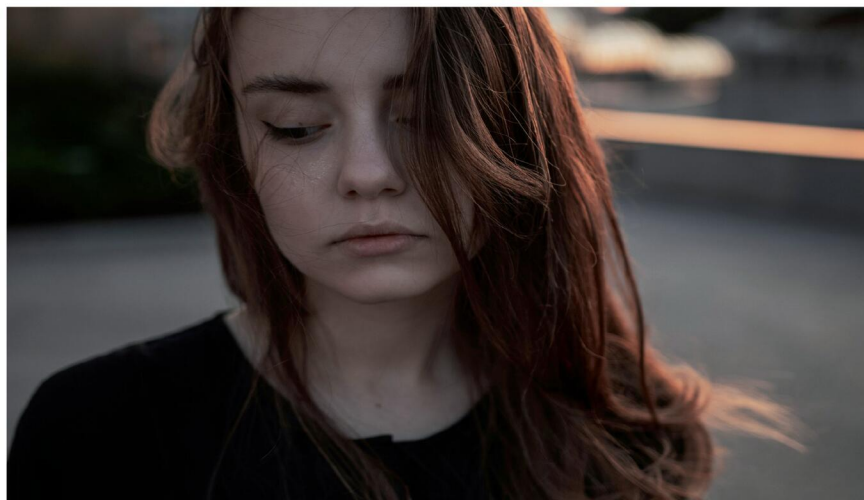
The Midlands has an average number of 216 children and young people who have contacted a MHST (with at least one attended appointment) for support from December 2023 to November last year.

This is above the national average of 214 contacts per team.

'Support is vital'

Giles Tinsley, programme director for Mental Health at NHS England in the Midlands, said: "During Mental Health Awareness Week and beyond, it is vital children and young people in the Midlands receive the help and support they need at school and college.

"By having support, students will gain confidence which so important for their education, relationships



and home life. "As well as helping them to thrive in the next steps of their education."

Parents and carers can help to look after a child or young person's mental health.

Tips for mental wellbeing

On the theme of the awareness week, the Mental Health Foundation is calling on people, groups, and organisations across the UK to celebrate the communities which support good mental health and

wellbeing. And it has issued a series of tips for people to help them improve their mental health.

Among them are for people to undertake activities they enjoy and maybe join a club or group focusing on their interests, such as sport, music, reading or gaming. Residents can meet others with similar interests to themselves.

It is suggested people spend more time outdoors – nature is well documented as a mental health improver and it can also lead to social interactions. People are advised to go

for walks, runs or bike rides – all proven to boost mental wellbeing.

People can meet other like-minded individuals who share the same interests, beliefs, faith or values and showing kindness to others – this gives a sense of belonging, as well as boosting the recipient of the kind act. It could be as simple as starting a conversation or forging a friendship.

People often think about others' kind acts but never say – expressing appreciation can boost the mental wellbeing of both people in these situations.

Caring for the local community and environment, such as participating in litter-picks, community gardening or organising local events can make people happier.

And welcoming new members to communities can also help. It could be as simple as people saying hello to a new neighbour, introducing themselves to a new colleague, inviting someone to a community event or recommending positive activities in the local area.

Other tips include becoming part of an online community – for those who cannot get out or have mobility issues and volunteering or giving to charity. Helping others improves the sense of community and assisting at charity shops, foodbanks or rescue centres can lower stress and make people feel happier.

And for people who do find themselves struggling, there are support groups out there – help from peers can help when going through a difficult time.

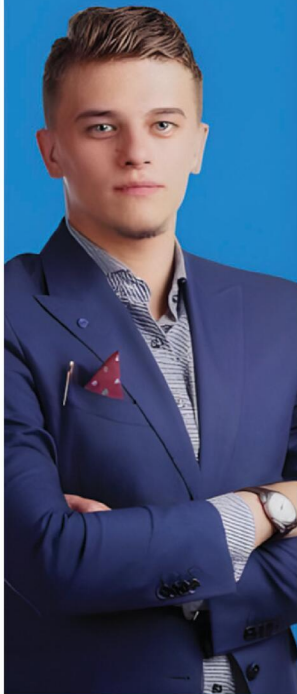
Go to: mentalhealth.org.uk/mhaw for more on Mental Health Awareness Week.

People can visit the 'Every Mind Matters' website at: nhs.uk/every-mind-matters/supporting-others/childrens-mental-health/ for more information.

Further plans for the development of children and young people's mental health care have been outlined in the NHS Long Term Plan. Visit: longtermplan.nhs.uk for more details.

Advice has been offered ahead of Mental Health Awareness Week. s

WE'RE HIRING: MULTI MEDIA ADVERTISING SALES ACCOUNT MANAGERS (OFFICE BASED AND / OR FIELD BASED)



Observer Standard

NEWSPAPERS | MAGAZINES | DIGITAL



We are looking to expand our Sales team across Warwickshire, Worcestershire and the West Midlands.

The ideal candidate will have a proven track record of success in Sales Account Management; and a strong understanding of the local media landscape - print and digital would be useful, but its not essential.

In this role, the successful candidates will be responsible for:

- Developing and maintaining current relationships with existing clients
- Identifying and making contact with new clients
- Identifying and closing new business opportunities

Skills required:

- A professional and friendly manner
- Excellent communication skills with ability to communicate on all levels
- Experience of sourcing and generating sales leads, over the telephone and face to face
- Ability to work independently and as part of a team
- Attention to detail

In return we offer a basic salary and on target earning in excess of £40k per annum, as well as a car allowance for Field Sales Account Managers

If you are interested in learning more about this really interesting role, please send your cv to: pat.bullivant@bullivantmedia.com

Bullivant Media Group publishes local Newspapers, Magazines and Websites across Warwickshire, Worcestershire and the West Midlands.



****FREE BAR EVERY NIGHT****

The New Ocean Hotel

WESTON-SUPER-MARE

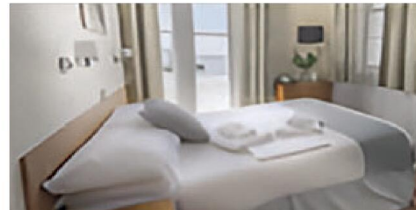


Amazing Offers
Up To 25% Off

FANTASTIC WEEKEND HOLIDAYS

Live Entertainment Every Night

Friday 23rd May - Monday 26th May	Was £345 NOW £255pp
Friday 6th June - Monday 9th June	Was £299 NOW £249pp
Friday 13th June - Monday 16th June	Was £305 NOW £254pp
Friday 20th June - Monday 23rd June	Was £309 NOW £259pp
Friday 27th June - Monday 30th June	Was £309 NOW £259pp
Friday 4th July - Monday 7th Jul	Was £315 NOW £265pp
Friday 18th July - Monday 21st July	Was £319 NOW £269pp
Friday 1st Aug - Monday 4th August	Was £319 NOW £269pp
Friday 8th Aug - Monday 11th August	Was £319 NOW £269pp
Friday 22nd Aug - Monday 25th August	Was £329 NOW £279pp
Friday 29th Aug - Monday 1st Sept	Was £329 NOW £269pp
Friday 5th Sept - Monday 8th Sept	Was £329 NOW £269pp
Friday 19th Sept - Monday 22nd Sept	Was £325 NOW £265pp
Friday 26th Sept - Monday 29th Sept	Was £325 NOW £259pp



ALL HOLIDAYS INCLUDE

- Three Nights En Suite Accommodation
- Full English Breakfast
- Four Course Evening Meal
- Live Nightly Entertainment
- FREE BAR 6pm-10pm Every Night
- Optional Coach Travel at Local Pick Up Point

To book or for further information please call us on 01934 621 839
www.newoceanhotel.co.uk

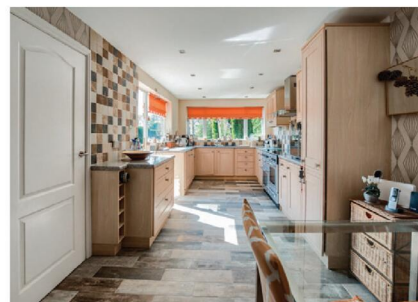




Cymarna, Coventry, CV7



Offers Over £775,000



Superb 4-bed detached on ¼ acre in Coventry's sought-after Tamworth Rd. Grand Spanish-style hall, 25ft lounge, snug, extended kitchen, 2 baths, WC, large driveway & SW-facing private garden.

(REF DM01) Elegant 4-Bedroom Detached Home on ¼ Acre | Tamworth Road, Coventry

Discover refined living in one of Coventry's most prestigious addresses. Nestled on a generous ¼ acre plot along the highly sought-after Tamworth Road, this superb four-bedroom detached residence offers an exceptional blend of space, character, and potential.

From the moment you step through the striking Spanish-style entrance hall, the charm and individuality of this mid-60s home are unmistakable. Inside, you'll find light-filled rooms of impressive proportions, including a 25ft lounge, a cozy snug, and a beautifully extended kitchen designed for both family living and entertaining.

Double patio doors with glass side panels fold seamlessly to frame the southwest-facing garden, inviting nature indoors and filling the home with natural light, birdsong, and sunshine throughout the day.

Whether you're hosting summer gatherings on the raised patio, relaxing among the mature trees and vibrant flower borders, or enjoying the peaceful privacy this garden offers, the outdoor space is nothing short of a sanctuary.

The property also features: Two bathrooms plus a downstairs WC, Double garage with electric door and direct access—simply drive in and stay dry, Extensive driveway parking for up to 10 cars, Room to grow: Potential to reconfigure or extend (STPP), including the possibility of an additional bedroom and en-suite, Lovingly maintained by the current owners for over 40 years and previously cherished by four other families, this is a rare opportunity to make your mark on a truly special home.

Links

YouTube tour



Web

https://www.iad.uk.com/listings/residential_sale-RX570927-coventry

Key Details

Property ID	570927
Build Area	2474 sq ft

Agent Details



Denise May
Midlands - Coventry

07723 914580

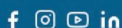
denise.may@iad.uk.com



Scan the QR code

- Highly Desirable Address - Tamworth Road
- Front Driveway Parking for several cars and double garage with electric door
- Grand Entrance Hallway, Internal french doors to 25" x 14" Lounge with French door to the patio and beyond
- Beautifully appointed fitted kitchen / dining room with dual aspect garden views
- Family bathroom and En-suite to the master bedroom

- Semi Rural location
- Stunning well manicured South West Facing gardens and patio
- Snug with French doors to garden
- Four Large Bedrooms with fitted furniture
- Explore the opportunity for a ground floor bedroom, with ensuite





Southam Road, Radford Semele Leamington Spa, CV31

Offers Over £245,000



Nestled in the picturesque village of Radford Semele, just 2 miles from Leamington Spa town centre, this stunning Grade II listed, semi-detached thatched cottage offers a rare blend of historic charm and modern comfort. Believed to date back to the 1600s and thoughtfully restored in the 1980s, the property exudes character while providing the conveniences of contemporary living.

Stepping inside, you are greeted by a wealth of period features, including original wood flooring, exposed ceiling and wall timber, and a striking arched brick fireplace with a gas burner, creating a warm and inviting atmosphere. The stylish country kitchen is equipped with modern appliances, and the shower room is well presented.

The spacious double bedroom boasts wardrobe storage, vanity wash unit, and stunning garden views. Door leading to what is currently an occasional bedroom, offering the potential for a walk-in wardrobe or a study.

Outside, the charm continues with a large private south facing garden—a private and tranquil space that includes a shed and space for a garden room alongside. Ideal for use as a home office, gym, or creative retreat. Full of mature plants, shrubs and trees and well manicured spaces throughout, a patio, decked sun terrace and secret rear patio and garden.

Located in the heart of Radford Semele, this home offers the best of both worlds: the peace and charm of village life with the convenience of being just minutes from Leamington Spa's array of boutique shops, cafes, and excellent transport links.

This unique and character-filled property is perfect for first-time buyers, downsizers, or those seeking a distinctive and enchanting retreat.

- Thatched Cottage, Grade II Listed having once undergone considerable renovation over a period of 3 year
- Renovation included rebuilding of the end wall, replacement of many timbers and rethatching, exposed beams, original timber front door, woodblock flooring.
- Cosy lounge, exposed ceiling and wall timbers and cosy gas log burner for convenience
- Fitted cottage style kitchen, with garden views

- Shower room to the ground floor
- Double bedroom with fitted wardrobe, and vanity wash unit, super garden views
- Occasional bedroom / dressing room / office
- Cottage rear garden with patio, decked sun terrace, secluded secret area at the top to escape and take it the last of the sun
- Unique, Full of Character, Highly Desirable
- Gas safety Certificate and Electrical Certificate

Links

YouTube tour



Web

www.iad.uk.com/listings/residential_sale-RX545015-radford-semele-leamington-spa

Key Details

Property ID	545015
Build Area	534 sq ft

Agent Details



Denise May

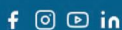
Midlands - Coventry

07723 914580

denise.may@iad.uk.com



Scan the QR code



Gardening

Flowers not mowers this month will help encourage the wildlife

THIS MONTH, botanical charity Plantlife is championing 'No Mow May'.

The simple but powerful campaign encourages gardeners to pause their lawnmowers and let wildflowers flourish.

With nearly 7.5million acres of meadows lost since the 1930s, the UK's pollinators and insect-eating birds are in decline as their habitats are lost.

British Garden Centres has put together some hints on how people can participate in No Mow May and transform their gardens into vital refuges for bees, butterflies, and other wildlife.

Five simple tips

Leave the lawn – A perfectly mown, striped lawn is like a green desert for bees. Leave the lawnmower in the shed, and the garden becomes more wildlife-friendly. Flowers and plants can grow through the grass, such as daisies, dandelions, creeping buttercups, and common mouse-ear flowers. The sweet flower heads will attract beneficial insects. These are great for pollinating insects, whilst taller grass and wild plants will also provide food and shelter for animals



Longer grass and the blooms which come with them attract a variety of wildlife, including bees and other pollinators. s



Gardeners are being urged to refrain from mowing their lawns in May to let the flowers flourish. s

like mice, hedgehogs, frogs, toads, and newts.

Plant wildflowers – Mixes and seed bombs can be sown with results visible in less than eight weeks. These concoctions contain nectar-rich species such as paper daisies, cornflowers, poppies, camomile, corn marigold, and forget-me-nots. Once grown, they create an environment for garden wildlife, providing habitats and food sources.

Small steps – Rewilding does not mean leaving the whole lawn overgrown all month long. People

can participate in No Mow May by mowing a path to the shed and a patio to make everything in the outdoor space accessible. Those not wanting to dedicate the whole garden to No Mow May can leave just a small patch – it all makes a positive difference.

Go organic – Avoid using chemical weedkillers which can harm both wildflowers and plants in the lawn. They can also damage the soil. Instead of spraying weeds to get rid of them, pull them out by hand – this natural approach promotes a healthier garden ecosystem.

Change the mowing routine – No Mow May is not just for this month, it can be done all-year-round and will benefit wildlife more if undertaken in this way. A Plantlife survey revealed the people with the most flowers in their lawns were those who mowed once every four weeks. Keep lawns to 2ins to 3ins – this encourages low-growing flowering plants, such as clovers and daisies. Allowing the grass to grow longer also leads to deeper roots, meaning your lawn needs less water and will be healthier.

Amy Stubbs, project and develop-

ment manager at British Garden Centres, said: "By simply pausing our mowers this May, we can transform our gardens into thriving havens for wildflowers and wildlife, making a powerful difference for pollinators, biodiversity, and our planet. No Mow May is a small act with a mighty impact. Letting your lawn go wild is the first step to restoring the balance we've lost and attracting beneficial insects back to our gardens."

Visit plantlife.org.uk/campaigns/nomowmay/ for more on No Mow May.

BBC Gardeners' World Live & goodFOOD SHOW SUMMER
Sponsored by **LEXUS**

12-15 June 2025 | NEC Birmingham

COMPETITION TIME...

We have **24 PAIRS OF TICKETS TO GIVE AWAY**
Simply answer the following question...
If you would like to be in with a chance to win a pair!

Nick Bailey appeared in which BBC show?

A BBC Gardeners' World
B The Great British Bake off
C Great British Garden Retreat

Please send your answers to competitions@bullivantmedia.com

Book now | bbcgardenersworldlive.com | goodfoodshow.com

*Competition closing date will be Sat 31st May 2025. Valid on general admission tickets only, excluding Saturday entry. Details correct at time of print. Transaction fee applies. The Gardeners' World logo is a trademark of the BBC. © BBC. The Good Food trade mark is used under licence from Immediate Media Company London Limited. Organised by Immediate Live (trading name of River Street Events Ltd).




Come and see our **HOUSEPLANT SELECTION**

Garden Centre
Mon-Sat: 9.00am to 5.00pm
Sunday: 10.00am to 4.00pm

Restaurant
Mon-Sat: 9.30am to 3.00pm
Sunday: 10.00am to 3.00pm
(Hot food last orders 3.00pm)

Drinks, Cake and Ice Cream
Mon-Sat: 9.30am to 3.30pm
Sunday: 10.00am to 3.30pm

**Ambleside Solihull,
Norton Lane,
Earlwood,
Solihull B94 5LR**

Call 01564 702800

We are currently updating our website to give it a brand new look. You can sign up to become an Ambleside Garden Centre Member to receive

- Exclusive Discounts
- Exclusive Events
- Chance to win prizes including Trips away

www.amblesidesolihull.co.uk



Relax in our Restaurant



See you in store soon!




Did you know that we grow almost all our own bedding and summer flowering perennials ourselves?

We have our own nursery, just a few miles from the garden centre, so all our plants arrive looking fresh and ready to grow in your gardens!

Large selection of BEDDING and HANGING BASKET PLANTS – NOW IN STOCK –

Calor Gas Bottles NOW IN STOCK



HANGING BASKETS Now In Stock




GROW YOUR OWN We have vegetable plants in stock



AMBLESIDE SOLIHULL Ice Cream PARLOUR

DELICIOUS TASTE COOL & REFRESHING



Best flavour collection

AMBLESIDE SOLIHULL

Start your day with a delicious breakfast!

Monday to Saturday 9.45am - 11.30am
Sunday 10.00am - 11.30am

Melcourt 

SylvaGrow

MULTI-PURPOSE
100% Peat-free

Premium-quality compost ideal for potting on, containers and planting out in your garden.


FlowerGro

Multi-Purpose Compost

22 Litre

Bloom n' Magic

FlowerGro




Join us for lunch.
Served daily from 12pm - 3.30pm



Check out our E-Editions!

Coventry Observer .co.uk

Thu, April 20, 2017 11:32 AM

Upgraded route set to improve

Gain Much Needed Extra Space With Our New Offer For Your Family And Friends

Windows Plus

Windows | Doors | Conservatories | Porches | Fascias & Soffits

CALL TODAY FOR A QUOTE ON OUR BEST PRICE 02476 230222

WWW.WINDOWS-PLUS.CO.UK

The Coventry Observer brings you the news free of charge every week

Rugby & Lutterworth Observer

Thu, April 20, 2017 11:32 AM

Izzy did her top

DRIVES4U

Are you looking to improve your driveway?

We can provide you with a free quote for your driveway in Coventry, Birmingham, Leeds

5 Year Guarantee

Tel: 0800 3032559 | Mob: 07773 911552 | www.drives4u.co.uk

Championing the needs of Rugby residents since 1991 and delivering the news to you every week

Leamington Observer Incorporating Warwick, Whitnash and Kenilworth

Thu, April 20, 2017 11:32 AM

Homes to a re

DRIVES4U

Are you looking to improve your driveway?

We can provide you with a free quote for your driveway in Coventry, Birmingham, Leeds

5 Year Guarantee

Tel: 0800 3032559 | Mob: 07773 911552 | www.drives4u.co.uk

Keep up with all the latest news, sport and entertainment from around the area at www.leamingtonobserver.co.uk

www.coventryobserver.co.uk/editions
www.rugbyobserver.co.uk/editions
www.leamingtonobserver.co.uk/editions

The same paper you love on your **mobile, tablet** and **computer**

Severn Trent reveals surprising items cluttering up the sewers

WATER provider Severn Trent has revealed some of the more bizarre items which have been found in the Midlands' sewers.

The world famous Mickey Mouse - in toy form - topped the list.

Other items included handlebars, the piece of a tree, safety signs, a child's ride along toy, dog poo bags and bricks.

And, whilst the list will provide a few chuckles, bosses at Severn Trent say it acts as an important reminder to customers what not to flush down the toilet.

It added blockages and flooding in homes and gardens were 'unfunny consequences' of the deposits.

Regular culprits

But it is not always plush toys the water company sees as the biggest problems - it is everyday items, such as wet wipes, sanitary products and cotton buds which find their way into the system that are the biggest issues.

Other offenders which can cause big issues are kitchen roll, cotton buds, nappies and sanitary products.

When all these are congealed together with fats, oils and greases, which also should not be put down the sink - they create fatbergs and blockages, which in turn can lead to flooding in homes and gardens.



A Mickey Mouse toy was one of the more unusual items found in the sewers. s

This is something being promoted in Severn Trent's latest 'Sewer Stories' campaign which asks everyone to 'be a binner, not a blocker', by showcasing the gross consequences of flushing the wrong things down the loo and pouring fats, oils and grease down the sink.

Grant Mitchell, Severn Trent's blockages lead, said: "Poor old

Mickey, he looks like he had quite the journey, but at least he made it out, there other items that get stuck and cause really nasty blockages.

"That is why we need all our customers to really think about what is being flushed down the toilet or poured down the sink, 'be a binner, not a blocker' and protect their homes from blockages and poten-

tial flooding in the home, which is not nice for anyone.

"We would urge everyone to keep in mind that only the 3P's should be put down the toilet - pee, poo and paper and make sure you are binning those fats, oils and greases rather than pouring them down the sink.

"And when it comes to a Mickey Mouse toy or a Ken doll, I'm not sure they really fancy a swim through the sewers, so try keep them safe."

Helpful tips

The water company has provided helpful tips for people so they do not contribute to blockages - these include using kitchen roll to soak up grease from plates and pans before washing up or using the dishwasher and collecting used cooking oil, fat and grease into a container, jar or tin and put it in the bin once cool.

Gravy and sauces should be binned rather than watch down the sink and the 3Ps - pee, poo and paper - should be the only things going down the toilet.

And, always make sure to keep a bin in the bathroom for all unflushable items such as wet wipes, sanitary products and cotton buds

Wet wipes continue to cause the biggest problems for the sewers and customers are asked not to flush them, even if they say 'flushable' or 'biodegradable' on the packag-

ing as they do not break down like toilet paper.

When they are flushed, they can cause the system to back-up and cause sewage to flood into homes, which is extremely unpleasant and can hit customers in the pocket.

Visit: stwater.co.uk/my-supply/ sewer-stories for more on preventing blockages and flooding and people with 'slow drainage' can go to: stwater.co.uk/in-my-area/check-my-area for details of any issues in their area.

A large log and a child's ride along toy were also found by Severn Trent engineers. s



THE JONES FAMILY JEWELLERS

CASH YOUR GOLD & SILVER TODAY! PRICES ARE THE HIGHEST THEY HAVE EVER BEEN! GET A QUOTE TODAY!



LEAMINGTON SPA

01926 882552 - 3 Satchwell Walk, CV32 4QE

KENILWORTH

01926 954271 - 16 Talisman Square, CV8 1JB

SUDOKU

Complete the grid so that every row, every column and every 3 x 3 box contains every digit from 1 to 9.

EASY

5		7			6	3		
6	8		9			5	4	2
	4			5			1	6
			2		5			
1		6				8		3
		5	3		8			
2	9				4		8	7
3	6	4			7		2	
		8	6			1		

HARD

		1		4		8		
	4						7	
2								3
	7	9	4		5	3	2	
	6	5	9		7	4	8	
9								5
	8							1
		6		9		2		

PATHFINDER

Beginning with the top highlighted letter, follow a continuous path of words associated with the given subject. The trail goes through each letter once, twisting up, down and sideways, but never diagonally.

Footwear

C B O O O A L A K E H I R D S
 O W Y F T B L E N R S G O F X
 E E P S L U M S S N O H P S O
 P T S O L L E P F S T T O W S
 E O M A E S S O L I G L L E R
 P L I M O L C L F P N I I N E
 I S A C A S H G U E L E A R T
 N S D A S H I O R S L T P U S
 S E N L O T K I B R A B G M P
 P S A S S T E N S I D I N S G
 A S R E T I L G L E E E T K O
 D R C K W S M D E C H N T I L
 L I I P I N R O F K L M A S C
 L S L E L K S P T A O S R E N
 E S I P P E R L A F E R Y J A

Solutions opposite

CROSSWORD

1		2		3		4	5	6		7
					8					
9										
10							11			
	12		13			14				
15					16					17
18					19		20			
21										
22						23				

ACROSS

- Mend (6)
- Mission (6)
- In order of time (13)
- Ruler (7)
- Extremity (5)
- Range (5)
- Brush (5)
- Suffer (5)
- Glowing (7)
- Articulation (13)
- Hark! (6)
- Drive home (6)

DOWN

- Affluence (6)
- Clear-sighted (13)
- Interior (5)
- Normal (7)
- Lodgings (13)
- Water down (6)
- Kudos (5)
- Scent (7)
- Scatter (6)
- Pamphlet (5)
- Offensive odour (6)
- Slow speech (5)

Scribble pad

LADDER

Using the clues provided, fill in each step of the ladder with a new word, changing one letter at a time.

- Unit of length
- Nourishment
- Tree material
- Term
- Well-used



NINER

Each number from 1 to 9 represents a different letter. Solve the clues and insert the letters in the appropriate squares to discover a word which uses all nine letters.

- 74765423 gives an element;
- 2165423 gives a second element;
- 84597845423 gives a third element.

1	2	3	4	5	6	7	8	9
---	---	---	---	---	---	---	---	---

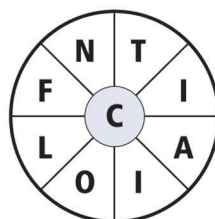
CODEWORD

This puzzle has no clues. Instead, every number printed in the grid represents a letter, with the same number always representing the same letter. For example, if 8 turns out to be a V, you can write in V wherever a square contains 8. Using your knowledge of words, complete the puzzle.

	21	1	4	16		23		23	14	1	22		
A		6			2	3	5	16	20		16		
B													
C	20	6	6	19	3		16		24	4	14	25	1
D													
E		2			7		2		20		14		4
F													
G		16	2	13	19	2	9	2	16		1	9	17
H													
I	19				23		17				5		21
J													
K	14	1	17	15	2	10		2	4	7	11	16	2
L													
M	26		19				16		17				16
N													
O	12	4	22		7	11	20	16	19	23	14	20	
P													
Q	1		11		20		17		18				13
R													
S	21	20	5	4	14		21		4	17	8	19	26
T													
U	2		12		26	16	1	13	2				20
V													
W	23	1	10	20			14			25	4	17	15
X													
Y													
Z													

WORDWHEEL

You have 10 mins to find as many words as possible using the letters in the wheel. Each must use the hub letter and at least 3 others. Letters may be used only once. You cannot use plurals, foreign words or proper nouns. There is at least one 9-letter word to be found.

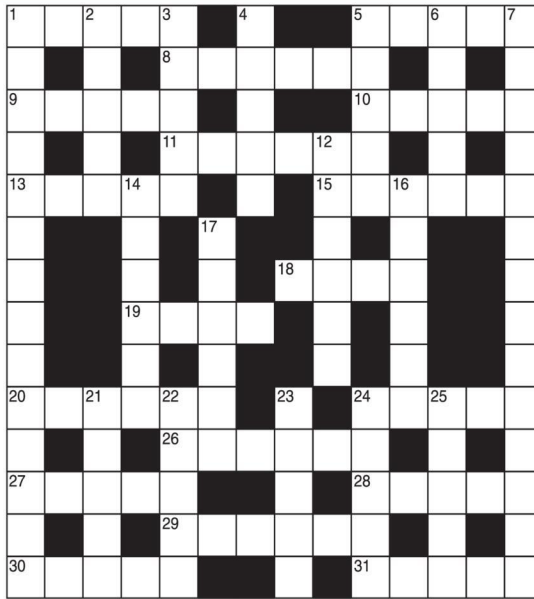


How you rate
 15 words: average 25 words: very good
 20 words: good 30 or more: excellent.

GENERAL KNOWLEDGE CROSSWORD

ACROSS

- 1 Historical town in Rhineland-Palatinate, 13 miles north of Ludwigshafen (5)
- 5 Small surface, as of a crystal (5)
- 8 Surname of the knighted playwright whose works include The Second Mrs Tanqueray and Trelawny of the Wells (6)
- 9 In botany, a fruit that splits into dehiscent parts (5)
- 10 & 7 Down Fairy play by Clifford Mills and John Ramsey, with music by Roger Quilter (5,3,7,4)
- 11 Any time when a great part of the earth's surface has been covered with frozen water (3,3)
- 13 See 25 Down
- 15 The Greek goddess of health (6)
- 18 Discrete, self-luminous, celestial body (4)
- 19 A small mountain lake (4)
- 20 See 23 Down
- 24 Joint between the forearm and the upper arm (5)
- 26 Birds of the crow family capable of imitating human speech, and often considered of ill omen (6)
- 27 The dried kernel of the coconut (5)
- 28 Surname of the American golfer who won the Open Golf Championship in 1922, 1924, 1928 and 1929 (5)
- 29 Nullify, imply non-existence of (6)
- 30 62-mile-long river of north-western France, flowing into the Channel between Dinard and St Malo (5)
- 31 Frills, usually starched, worn round the neck, particularly during the reigns of Elizabeth I and James I (5)



DOWN

- 1 The highest non-commissioned rank in the RAF (7,7)
- 2 A first-magnitude star in the foot of Orion (5)
- 3 Country of south-western Europe occupying most of the Iberian peninsula (5)
- 4 Another name for the barracouta (5)
- 5 Small seaport in Cornwall, about 22 miles west of Plymouth (5)
- 6 Rubber rolled in thin crinkly sheets (5)
- 7 See 10 Across
- 12 A quarter, especially poor, inhabited by any racial group (6)
- 14 A terminus of the old LMS railway (6)
- 16 Small desert-dwelling rodent which can be kept as a pet (6)
- 17 Archimede's cry when he had thought of a method of detecting the adulteration of the gold for Hiero's crown (6)
- 21 The trembling poplar tree (5)
- 22 Large wading bird with long legs, neck and bill (5)
- 23 & 20 Across Composer best known for his Symphonic Variations for piano and orchestra (5,6)
- 24 District in north-eastern Surrey which includes Sandown Park racecourse (5)
- 25 & 13 Across Morasses east of the Shannon, comprising about 370 square miles of Offaly, Meath, Laois and Kildare (3,2,5)

SOLUTIONS

ACROSS: 1 Worms; 5 Facet; 8 Finero; 9 Regma; 10 Where; 11 Ice Age; 13 Allen; 15 Hyla; 18 Star; 19 Tarn; 20 Frank; 24 Elbow; 26 Ravens; 27 Copra; 28 Hagen; 29 Negate; 30 Rance; 31 Ruffs. DOWN: 1 Warrant officer; 2 Rigel; 3 Spain; 4 Snock; 5 Fowey; 6 Crepe; 7 The Rainbow Ends; 12 Ghetto; 14 Euston; 16 Gerbil; 17 Eureka; 21 Aspen; 22 Crane; 23 Cesar; 24 Escher; 25 Bog of

General Knowledge Crossword

ACROSS: 1 Repair; 4 Errand; 9 Chronological; 10 Emperor; 11 Limit; 12 Scope; 14 Broom; 18 Incur; 19 Radiant; 21 Pronunciation; 22 Listen; 23 Clinch. DOWN: 1 Riches; 2 Perspicacious; 3 Inner; 5 Regular; 6 Accommodation; 7 Dilute; 8 Glory; 13 Perfume; 15 Dispel; 16 Tract; 17 Stench; 20 Drawl.

Crossword

ACROSS: 1 Worn; 2 Horn; 3 Foot; 4 Food; 5 Word; 6 Word; 7 Ladder; 8 Codeword; 9 Worn; 10 Horn; 11 Worn; 12 Horn; 13 Foot; 14 Food; 15 Word; 16 Word; 17 Ladder; 18 Codeword; 19 Worn; 20 Horn; 21 Worn; 22 Horn; 23 Foot; 24 Food; 25 Word; 26 Word; 27 Ladder; 28 Codeword; 29 Worn; 30 Horn; 31 Worn; 32 Horn; 33 Foot; 34 Food; 35 Word; 36 Word; 37 Ladder; 38 Codeword; 39 Worn; 40 Horn; 41 Worn; 42 Horn; 43 Foot; 44 Food; 45 Word; 46 Word; 47 Ladder; 48 Codeword; 49 Worn; 50 Horn; 51 Worn; 52 Horn; 53 Foot; 54 Food; 55 Word; 56 Word; 57 Ladder; 58 Codeword; 59 Worn; 60 Horn; 61 Worn; 62 Horn; 63 Foot; 64 Food; 65 Word; 66 Word; 67 Ladder; 68 Codeword; 69 Worn; 70 Horn; 71 Worn; 72 Horn; 73 Foot; 74 Food; 75 Word; 76 Word; 77 Ladder; 78 Codeword; 79 Worn; 80 Horn; 81 Worn; 82 Horn; 83 Foot; 84 Food; 85 Word; 86 Word; 87 Ladder; 88 Codeword; 89 Worn; 90 Horn; 91 Worn; 92 Horn; 93 Foot; 94 Food; 95 Word; 96 Word; 97 Ladder; 98 Codeword; 99 Worn; 100 Horn; 101 Worn; 102 Horn; 103 Foot; 104 Food; 105 Word; 106 Word; 107 Ladder; 108 Codeword; 109 Worn; 110 Horn; 111 Worn; 112 Horn; 113 Foot; 114 Food; 115 Word; 116 Word; 117 Ladder; 118 Codeword; 119 Worn; 120 Horn; 121 Worn; 122 Horn; 123 Foot; 124 Food; 125 Word; 126 Word; 127 Ladder; 128 Codeword; 129 Worn; 130 Horn; 131 Worn; 132 Horn; 133 Foot; 134 Food; 135 Word; 136 Word; 137 Ladder; 138 Codeword; 139 Worn; 140 Horn; 141 Worn; 142 Horn; 143 Foot; 144 Food; 145 Word; 146 Word; 147 Ladder; 148 Codeword; 149 Worn; 150 Horn; 151 Worn; 152 Horn; 153 Foot; 154 Food; 155 Word; 156 Word; 157 Ladder; 158 Codeword; 159 Worn; 160 Horn; 161 Worn; 162 Horn; 163 Foot; 164 Food; 165 Word; 166 Word; 167 Ladder; 168 Codeword; 169 Worn; 170 Horn; 171 Worn; 172 Horn; 173 Foot; 174 Food; 175 Word; 176 Word; 177 Ladder; 178 Codeword; 179 Worn; 180 Horn; 181 Worn; 182 Horn; 183 Foot; 184 Food; 185 Word; 186 Word; 187 Ladder; 188 Codeword; 189 Worn; 190 Horn; 191 Worn; 192 Horn; 193 Foot; 194 Food; 195 Word; 196 Word; 197 Ladder; 198 Codeword; 199 Worn; 200 Horn; 201 Worn; 202 Horn; 203 Foot; 204 Food; 205 Word; 206 Word; 207 Ladder; 208 Codeword; 209 Worn; 210 Horn; 211 Worn; 212 Horn; 213 Foot; 214 Food; 215 Word; 216 Word; 217 Ladder; 218 Codeword; 219 Worn; 220 Horn; 221 Worn; 222 Horn; 223 Foot; 224 Food; 225 Word; 226 Word; 227 Ladder; 228 Codeword; 229 Worn; 230 Horn; 231 Worn; 232 Horn; 233 Foot; 234 Food; 235 Word; 236 Word; 237 Ladder; 238 Codeword; 239 Worn; 240 Horn; 241 Worn; 242 Horn; 243 Foot; 244 Food; 245 Word; 246 Word; 247 Ladder; 248 Codeword; 249 Worn; 250 Horn; 251 Worn; 252 Horn; 253 Foot; 254 Food; 255 Word; 256 Word; 257 Ladder; 258 Codeword; 259 Worn; 260 Horn; 261 Worn; 262 Horn; 263 Foot; 264 Food; 265 Word; 266 Word; 267 Ladder; 268 Codeword; 269 Worn; 270 Horn; 271 Worn; 272 Horn; 273 Foot; 274 Food; 275 Word; 276 Word; 277 Ladder; 278 Codeword; 279 Worn; 280 Horn; 281 Worn; 282 Horn; 283 Foot; 284 Food; 285 Word; 286 Word; 287 Ladder; 288 Codeword; 289 Worn; 290 Horn; 291 Worn; 292 Horn; 293 Foot; 294 Food; 295 Word; 296 Word; 297 Ladder; 298 Codeword; 299 Worn; 300 Horn; 301 Worn; 302 Horn; 303 Foot; 304 Food; 305 Word; 306 Word; 307 Ladder; 308 Codeword; 309 Worn; 310 Horn; 311 Worn; 312 Horn; 313 Foot; 314 Food; 315 Word; 316 Word; 317 Ladder; 318 Codeword; 319 Worn; 320 Horn; 321 Worn; 322 Horn; 323 Foot; 324 Food; 325 Word; 326 Word; 327 Ladder; 328 Codeword; 329 Worn; 330 Horn; 331 Worn; 332 Horn; 333 Foot; 334 Food; 335 Word; 336 Word; 337 Ladder; 338 Codeword; 339 Worn; 340 Horn; 341 Worn; 342 Horn; 343 Foot; 344 Food; 345 Word; 346 Word; 347 Ladder; 348 Codeword; 349 Worn; 350 Horn; 351 Worn; 352 Horn; 353 Foot; 354 Food; 355 Word; 356 Word; 357 Ladder; 358 Codeword; 359 Worn; 360 Horn; 361 Worn; 362 Horn; 363 Foot; 364 Food; 365 Word; 366 Word; 367 Ladder; 368 Codeword; 369 Worn; 370 Horn; 371 Worn; 372 Horn; 373 Foot; 374 Food; 375 Word; 376 Word; 377 Ladder; 378 Codeword; 379 Worn; 380 Horn; 381 Worn; 382 Horn; 383 Foot; 384 Food; 385 Word; 386 Word; 387 Ladder; 388 Codeword; 389 Worn; 390 Horn; 391 Worn; 392 Horn; 393 Foot; 394 Food; 395 Word; 396 Word; 397 Ladder; 398 Codeword; 399 Worn; 400 Horn; 401 Worn; 402 Horn; 403 Foot; 404 Food; 405 Word; 406 Word; 407 Ladder; 408 Codeword; 409 Worn; 410 Horn; 411 Worn; 412 Horn; 413 Foot; 414 Food; 415 Word; 416 Word; 417 Ladder; 418 Codeword; 419 Worn; 420 Horn; 421 Worn; 422 Horn; 423 Foot; 424 Food; 425 Word; 426 Word; 427 Ladder; 428 Codeword; 429 Worn; 430 Horn; 431 Worn; 432 Horn; 433 Foot; 434 Food; 435 Word; 436 Word; 437 Ladder; 438 Codeword; 439 Worn; 440 Horn; 441 Worn; 442 Horn; 443 Foot; 444 Food; 445 Word; 446 Word; 447 Ladder; 448 Codeword; 449 Worn; 450 Horn; 451 Worn; 452 Horn; 453 Foot; 454 Food; 455 Word; 456 Word; 457 Ladder; 458 Codeword; 459 Worn; 460 Horn; 461 Worn; 462 Horn; 463 Foot; 464 Food; 465 Word; 466 Word; 467 Ladder; 468 Codeword; 469 Worn; 470 Horn; 471 Worn; 472 Horn; 473 Foot; 474 Food; 475 Word; 476 Word; 477 Ladder; 478 Codeword; 479 Worn; 480 Horn; 481 Worn; 482 Horn; 483 Foot; 484 Food; 485 Word; 486 Word; 487 Ladder; 488 Codeword; 489 Worn; 490 Horn; 491 Worn; 492 Horn; 493 Foot; 494 Food; 495 Word; 496 Word; 497 Ladder; 498 Codeword; 499 Worn; 500 Horn; 501 Worn; 502 Horn; 503 Foot; 504 Food; 505 Word; 506 Word; 507 Ladder; 508 Codeword; 509 Worn; 510 Horn; 511 Worn; 512 Horn; 513 Foot; 514 Food; 515 Word; 516 Word; 517 Ladder; 518 Codeword; 519 Worn; 520 Horn; 521 Worn; 522 Horn; 523 Foot; 524 Food; 525 Word; 526 Word; 527 Ladder; 528 Codeword; 529 Worn; 530 Horn; 531 Worn; 532 Horn; 533 Foot; 534 Food; 535 Word; 536 Word; 537 Ladder; 538 Codeword; 539 Worn; 540 Horn; 541 Worn; 542 Horn; 543 Foot; 544 Food; 545 Word; 546 Word; 547 Ladder; 548 Codeword; 549 Worn; 550 Horn; 551 Worn; 552 Horn; 553 Foot; 554 Food; 555 Word; 556 Word; 557 Ladder; 558 Codeword; 559 Worn; 560 Horn; 561 Worn; 562 Horn; 563 Foot; 564 Food; 565 Word; 566 Word; 567 Ladder; 568 Codeword; 569 Worn; 570 Horn; 571 Worn; 572 Horn; 573 Foot; 574 Food; 575 Word; 576 Word; 577 Ladder; 578 Codeword; 579 Worn; 580 Horn; 581 Worn; 582 Horn; 583 Foot; 584 Food; 585 Word; 586 Word; 587 Ladder; 588 Codeword; 589 Worn; 590 Horn; 591 Worn; 592 Horn; 593 Foot; 594 Food; 595 Word; 596 Word; 597 Ladder; 598 Codeword; 599 Worn; 600 Horn; 601 Worn; 602 Horn; 603 Foot; 604 Food; 605 Word; 606 Word; 607 Ladder; 608 Codeword; 609 Worn; 610 Horn; 611 Worn; 612 Horn; 613 Foot; 614 Food; 615 Word; 616 Word; 617 Ladder; 618 Codeword; 619 Worn; 620 Horn; 621 Worn; 622 Horn; 623 Foot; 624 Food; 625 Word; 626 Word; 627 Ladder; 628 Codeword; 629 Worn; 630 Horn; 631 Worn; 632 Horn; 633 Foot; 634 Food; 635 Word; 636 Word; 637 Ladder; 638 Codeword; 639 Worn; 640 Horn; 641 Worn; 642 Horn; 643 Foot; 644 Food; 645 Word; 646 Word; 647 Ladder; 648 Codeword; 649 Worn; 650 Horn; 651 Worn; 652 Horn; 653 Foot; 654 Food; 655 Word; 656 Word; 657 Ladder; 658 Codeword; 659 Worn; 660 Horn; 661 Worn; 662 Horn; 663 Foot; 664 Food; 665 Word; 666 Word; 667 Ladder; 668 Codeword; 669 Worn; 670 Horn; 671 Worn; 672 Horn; 673 Foot; 674 Food; 675 Word; 676 Word; 677 Ladder; 678 Codeword; 679 Worn; 680 Horn; 681 Worn; 682 Horn; 683 Foot; 684 Food; 685 Word; 686 Word; 687 Ladder; 688 Codeword; 689 Worn; 690 Horn; 691 Worn; 692 Horn; 693 Foot; 694 Food; 695 Word; 696 Word; 697 Ladder; 698 Codeword; 699 Worn; 700 Horn; 701 Worn; 702 Horn; 703 Foot; 704 Food; 705 Word; 706 Word; 707 Ladder; 708 Codeword; 709 Worn; 710 Horn; 711 Worn; 712 Horn; 713 Foot; 714 Food; 715 Word; 716 Word; 717 Ladder; 718 Codeword; 719 Worn; 720 Horn; 721 Worn; 722 Horn; 723 Foot; 724 Food; 725 Word; 726 Word; 727 Ladder; 728 Codeword; 729 Worn; 730 Horn; 731 Worn; 732 Horn; 733 Foot; 734 Food; 735 Word; 736 Word; 737 Ladder; 738 Codeword; 739 Worn; 740 Horn; 741 Worn; 742 Horn; 743 Foot; 744 Food; 745 Word; 746 Word; 747 Ladder; 748 Codeword; 749 Worn; 750 Horn; 751 Worn; 752 Horn; 753 Foot; 754 Food; 755 Word; 756 Word; 757 Ladder; 758 Codeword; 759 Worn; 760 Horn; 761 Worn; 762 Horn; 763 Foot; 764 Food; 765 Word; 766 Word; 767 Ladder; 768 Codeword; 769 Worn; 770 Horn; 771 Worn; 772 Horn; 773 Foot; 774 Food; 775 Word; 776 Word; 777 Ladder; 778 Codeword; 779 Worn; 780 Horn; 781 Worn; 782 Horn; 783 Foot; 784 Food; 785 Word; 786 Word; 787 Ladder; 788 Codeword; 789 Worn; 790 Horn; 791 Worn; 792 Horn; 793 Foot; 794 Food; 795 Word; 796 Word; 797 Ladder; 798 Codeword; 799 Worn; 800 Horn; 801 Worn; 802 Horn; 803 Foot; 804 Food; 805 Word; 806 Word; 807 Ladder; 808 Codeword; 809 Worn; 810 Horn; 811 Worn; 812 Horn; 813 Foot; 814 Food; 815 Word; 816 Word; 817 Ladder; 818 Codeword; 819 Worn; 820 Horn; 821 Worn; 822 Horn; 823 Foot; 824 Food; 825 Word; 826 Word; 827 Ladder; 828 Codeword; 829 Worn; 830 Horn; 831 Worn; 832 Horn; 833 Foot; 834 Food; 835 Word; 836 Word; 837 Ladder; 838 Codeword; 839 Worn; 840 Horn; 841 Worn; 842 Horn; 843 Foot; 844 Food; 845 Word; 846 Word; 847 Ladder; 848 Codeword; 849 Worn; 850 Horn; 851 Worn; 852 Horn; 853 Foot; 854 Food; 855 Word; 856 Word; 857 Ladder; 858 Codeword; 859 Worn; 860 Horn; 861 Worn; 862 Horn; 863 Foot; 864 Food; 865 Word; 866 Word; 867 Ladder; 868 Codeword; 869 Worn; 870 Horn; 871 Worn; 872 Horn; 873 Foot; 874 Food; 875 Word; 876 Word; 877 Ladder; 878 Codeword; 879 Worn; 880 Horn; 881 Worn; 882 Horn; 883 Foot; 884 Food; 885 Word; 886 Word; 887 Ladder; 888 Codeword; 889 Worn; 890 Horn; 891 Worn; 892 Horn; 893 Foot; 894 Food; 895 Word; 896 Word; 897 Ladder; 898 Codeword; 899 Worn; 900 Horn; 901 Worn; 902 Horn; 903 Foot; 904 Food; 905 Word; 906 Word; 907 Ladder; 908 Codeword; 909 Worn; 910 Horn; 911 Worn; 912 Horn; 913 Foot; 914 Food; 915 Word; 916 Word; 917 Ladder; 918 Codeword; 919 Worn; 920 Horn; 921 Worn; 922 Horn; 923 Foot; 924 Food; 925 Word; 926 Word; 927 Ladder; 928 Codeword; 929 Worn; 930 Horn; 931 Worn; 932 Horn; 933 Foot; 934 Food; 935 Word; 936 Word; 937 Ladder; 938 Codeword; 939 Worn; 940 Horn; 941 Worn; 942 Horn; 943 Foot; 944 Food; 945 Word; 946 Word; 947 Ladder; 948 Codeword; 949 Worn; 950 Horn; 951 Worn; 952 Horn; 953 Foot; 954 Food; 955 Word; 956 Word; 957 Ladder; 958 Codeword; 959 Worn; 960 Horn; 961 Worn; 962 Horn; 963 Foot; 964 Food; 965 Word; 966 Word; 967 Ladder; 968 Codeword; 969 Worn; 970 Horn; 971 Worn; 972 Horn; 973 Foot; 974 Food; 975 Word; 976 Word; 977 Ladder; 978 Codeword; 979 Worn; 980 Horn; 981 Worn; 982 Horn; 983 Foot; 984 Food; 985 Word; 986 Word; 987 Ladder; 988 Codeword; 989 Worn; 990 Horn; 991 Worn; 992 Horn; 993 Foot; 994 Food; 995 Word; 996 Word; 997 Ladder; 998 Codeword; 999 Worn; 1000 Horn; 1001 Worn; 1002 Horn; 1003 Foot; 1004 Food; 1005 Word; 1006 Word; 1007 Ladder; 1008 Codeword; 1009 Worn; 1010 Horn; 1011 Worn; 1012 Horn; 1013 Foot; 1014 Food; 1015 Word; 1016 Word; 1017 Ladder; 1018 Codeword; 1019 Worn; 1020 Horn; 1021 Worn; 1022 Horn; 1023 Foot; 1024 Food; 1025 Word; 1026 Word; 1027 Ladder; 1028 Codeword; 1029 Worn; 1030 Horn; 1031 Worn; 1032 Horn; 1033 Foot; 1034 Food; 1035 Word; 1036 Word; 1037 Ladder; 1038 Codeword; 1039 Worn; 1040 Horn; 1041 Worn; 1042 Horn; 1043 Foot; 1044 Food; 1045 Word; 1046 Word; 1047 Ladder; 1048 Codeword; 1049 Worn; 1050 Horn; 1051 Worn; 1052 Horn; 1053 Foot; 1054 Food; 1055 Word; 1056 Word; 1057 Ladder; 1058 Codeword; 1059 Worn; 1060 Horn; 1061 Worn; 1062 Horn; 1063 Foot; 1064 Food; 1065 Word; 1066 Word; 1067 Ladder; 1068 Codeword; 1069 Worn; 1070 Horn; 1071 Worn; 1072 Horn; 1073 Foot; 1074 Food; 1075 Word; 1076 Word; 1077 Ladder; 1078 Codeword; 1079 Worn; 1080 Horn; 1081 Worn; 1082 Horn; 1083 Foot; 1084 Food; 1085 Word; 1086 Word; 1087 Ladder; 1088 Codeword; 1089 Worn; 1090 Horn; 1091 Worn; 1092 Horn; 1093 Foot; 1094 Food; 1095 Word; 1096 Word; 1097 Ladder; 1098 Codeword; 1099 Worn; 1100 Horn; 1101 Worn; 1102 Horn; 1103 Foot; 1104 Food; 1105 Word; 1106 Word; 1107 Ladder; 1108 Codeword; 1109 Worn; 1110 Horn; 1111 Worn; 1112 Horn; 1113 Foot; 1114 Food; 1115 Word; 1116 Word; 1117 Ladder; 1118 Codeword; 1119 Worn; 1120 Horn; 1121 Worn; 1122 Horn; 1123 Foot; 1124 Food; 1125 Word; 1126 Word; 1127 Ladder; 1128 Codeword; 1129 Worn; 1130 Horn; 1131 Worn; 1132 Horn; 1133 Foot; 1134 Food; 1135 Word; 1136 Word; 1137 Ladder; 1138 Codeword; 1139 Worn; 1140 Horn; 1141 Worn; 1142 Horn; 1143 Foot; 1144 Food; 1145 Word; 1146 Word; 1147 Ladder; 1148 Codeword; 1149 Worn; 1150 Horn; 1151 Worn; 1152 Horn; 1153 Foot; 1154 Food; 1155 Word; 1156 Word; 1157 Ladder; 1158 Codeword; 1159 Worn; 1160 Horn; 1161 Worn; 1162 Horn; 1163 Foot; 1164 Food; 1165 Word; 1166 Word; 1167 Ladder; 1168 Codeword; 1169 Worn; 1170 Horn; 1171 Worn; 1172 Horn; 1173 Foot; 1174 Food; 1175 Word; 1176 Word; 1177 Ladder; 1178 Codeword; 1179 Worn; 1180 Horn; 1181 Worn; 1182 Horn; 1183 Foot; 1184 Food; 1185 Word; 1186 Word; 1187 Ladder; 1188 Codeword; 1189 Worn; 1190 Horn; 1191 Worn; 1192 Horn; 1193 Foot; 1194 Food; 1195 Word; 1196 Word; 1197 Ladder; 1198 Codeword; 1199 Worn; 1200 Horn; 1201 Worn; 1202 Horn; 1203 Foot; 1204 Food; 1205 Word; 1206 Word; 1207 Ladder; 1208 Codeword; 1209 Worn; 1210 Horn; 1211 Worn; 1212 Horn; 1213 Foot; 1214 Food; 1215 Word; 1216 Word; 1217 Ladder; 1218 Codeword; 1219 Worn; 1220 Horn; 1221 Worn; 1222 Horn; 1223 Foot; 1224 Food; 1225 Word; 1226 Word; 1227 Ladder; 1228 Codeword; 1229 Worn; 1230 Horn; 1231 Worn; 1232 Horn; 1233 Foot; 1234 Food; 1235 Word; 1236 Word; 1237 Ladder; 1238 Codeword; 1239 Worn; 1240 Horn; 1241 Worn; 1242 Horn; 1243 Foot; 1244 Food; 1245 Word; 1246 Word; 1247 Ladder; 1248 Codeword; 1249 Worn; 1250 Horn; 1251 Worn; 1252 Horn; 1253 Foot; 1254 Food; 1255 Word; 1256 Word; 1257 Ladder; 1258 Codeword; 1259 Worn; 1260 Horn; 1261 Worn; 1262 Horn; 1263 Foot; 1264 Food; 1265 Word; 1266 Word; 1267 Ladder; 1268 Codeword; 1269 Worn; 1270 Horn; 1271 Worn; 1272 Horn; 1273 Foot; 1274 Food; 1275 Word; 1276 Word; 1277 Ladder; 1278 Codeword; 1279 Worn; 1280 Horn; 1281 Worn; 1282 Horn; 1283 Foot; 1284 Food; 1285 Word; 1286 Word; 1287 Ladder; 1288 Codeword; 1289 Worn; 1290 Horn; 1291 Worn; 1292 Horn; 1293 Foot; 1294 Food; 1295 Word; 1296 Word; 1297 Ladder; 1298 Codeword; 1299 Worn; 1300 Horn; 1301 Worn; 1302 Horn; 1303 Foot; 1304 Food; 1305 Word; 1306 Word; 1307 Ladder; 1308 Codeword; 1309 Worn; 1310 Horn; 1311 Worn; 1312 Horn; 1313 Foot; 1314 Food; 1315 Word; 1316 Word; 1317 Ladder; 1318 Codeword; 1319 Worn; 1320 Horn; 1321 Worn; 1322 Horn; 1323 Foot; 1324 Food; 1325 Word; 1326 Word; 1327 Ladder; 1328 Codeword; 1329 Worn; 1330 Horn; 1331 Worn; 1332 Horn; 1333 Foot; 1334 Food; 1335 Word; 1336 Word; 1337 Ladder; 1338 Codeword; 1339 Worn; 1340 Horn; 1341 Worn; 1342 Horn; 1343 Foot; 1344 Food; 1345 Word; 1346 Word; 1347 Ladder; 1348 Codeword; 1349 Worn; 1350 Horn; 1351 Worn; 1352 Horn; 1353 Foot; 1354 Food; 1355 Word; 1356 Word; 1357 Ladder; 1358 Codeword; 1359 Worn; 1360 Horn; 1361 Worn; 1362 Horn; 1363 Foot; 1364 Food; 1365 Word; 1366 Word; 1367 Ladder; 1368 Codeword; 1369 Worn; 1370 Horn; 1371 Worn; 1372 Horn; 1373 Foot; 1374 Food; 1375 Word; 1376 Word; 1377 Ladder; 1378 Codeword; 1379 Worn; 1380 Horn; 1381 Worn; 1382 Horn; 1383 Foot; 1384 Food; 1385 Word; 1386 Word; 1387 Ladder; 1388 Codeword; 1389 Worn; 1390 Horn; 1391 Worn; 1392 Horn; 1393 Foot; 1394 Food; 1395 Word; 1396 Word; 1397 Ladder; 1398 Codeword; 1399 Worn; 1400 Horn; 1401 Worn; 1402 Horn; 1403 Foot; 1404 Food; 1405 Word; 1406 Word; 1407 Ladder; 1408 Codeword; 1409 Worn; 1410 Horn; 1411 Worn; 1412 Horn; 1413 Foot; 1414 Food; 1415 Word; 1416 Word; 1417 Ladder; 1418 Codeword; 1419 Worn; 1420 Horn; 1421 Worn; 1422 Horn; 1423 Foot; 1424 Food; 1425 Word; 1426 Word; 1427 Ladder; 1428 Codeword; 1429 Worn; 1430 Horn; 1431 Worn; 1432 Horn; 1433 Foot; 1434 Food; 1435 Word; 1436 Word; 1437 Ladder; 1438 Codeword; 1439 Worn; 1440 Horn; 1441 Worn; 1442 Horn; 1443 Foot; 1444 Food; 1445 Word; 1446 Word; 1447 Ladder; 1448 Codeword; 1449 Worn; 1450 Horn; 1451 Worn; 1452 Horn; 1453 Foot; 1454 Food; 1455 Word; 1456 Word; 1457 Ladder; 1458 Codeword; 1459 Worn; 1460 Horn; 1461 Worn; 1462 Horn; 1463 Foot; 1464 Food; 1465 Word; 1466 Word; 1467 Ladder; 1468 Codeword; 1469 Worn; 1470 Horn; 1471 Worn; 1472 Horn; 1473 Foot; 1474 Food; 1475 Word; 1476 Word; 1477 Ladder; 1478 Codeword; 1479 Worn; 1480 Horn; 1481 Worn; 1482 Horn; 1483 Foot; 1484 Food; 1485 Word; 1486 Word; 1487 Ladder; 1488 Codeword; 1489 Worn; 1490 Horn; 1491 Worn; 1492 Horn; 1493 Foot; 1494 Food; 1495 Word; 1496 Word; 1497 Ladder; 1498 Codeword; 1499 Worn; 1500 Horn; 1501 Worn; 1502 Horn; 1503 Foot; 1504 Food; 1505 Word; 1506 Word; 1507 Ladder; 1508 Codeword; 1509 Worn; 1510 Horn; 1511 Worn; 1512 Horn; 1513 Foot; 1514 Food; 1515 Word; 1516 Word; 1517 Ladder; 1518 Codeword; 1519 Worn; 1520 Horn; 1521 Worn; 1522 Horn; 1523 Foot; 1524 Food; 1525 Word; 1526 Word; 1527 Ladder; 1528 Codeword; 1529 Worn; 1530 Horn; 1531 Worn; 1532 Horn; 1533 Foot; 1534 Food; 1535 Word; 1536 Word; 1537 Ladder; 1538 Codeword; 1539 Worn; 1540 Horn; 1541 Worn; 1542 Horn; 1543 Foot; 1544 Food; 1545 Word; 1546 Word; 1547 Ladder; 1548 Codeword; 1549 Worn; 1550 Horn; 1551 Worn; 1552 Horn; 1553 Foot; 1554 Food; 1555 Word; 1556 Word; 1557 Ladder; 1558 Codeword; 1559 Worn; 1560 Horn; 1561 Worn; 1562 Horn; 1563 Foot; 1564 Food; 1565 Word; 1566

Classified

TELEPHONE 01527 588688 FACSIMILE 01527 584371

PUBLIC NOTICES

PUBLIC NOTICES

Warwickshire County Council

ROAD TRAFFIC REGULATION ACT 1984
Warwickshire County Council has made the following Temporary Traffic Orders:

SILVER EAGLE WAY, BAGINTOEN
Order Effect: A 30mph speed restriction will be imposed on Silver Eagle Way, Baginton from a point 38 metres south of the new junction with Stoneleigh Road and continuing south for 320 metres.
Reason for Order: For the safety of all road users.
Order Commences: 19 May 2025 for up to 18 months.
Anticipated Completion: 20 September 2025.
Contractor: Winvic Construction Ltd, Tel: 01604 678 960.

SANDY LANE, FILLONGLEY
Order Effect: Road closed to vehicular traffic from Rosemary Cottage to the rear of Allotment Gardens.
Reason for Order: To enable duct laying works.
Order Commences: 22 May 2025 for up to 18 months.
Anticipated Completion: 29 May 2025.
Access & Diversion: Wood End Lane, Nuneaton Road and vice versa.
Contractor: Callan Connect, Tel: 01213 275 167.

SQUARE LANE, CORLEY
Order Effect: Road closed to vehicular traffic from its junction with Tamworth Road.
Reason for Order: To enable works for laying duct.
Order Commences: 22 May 2025 for up to 18 months.
Anticipated Completion: 29 May 2025.
Access & Diversion: Square Lane, Astley Lane, Wood End Lane, Tamworth Road and vice versa.
Contractor: Callan Connect, Tel: 01213 275 167.

PACKINGTON LANE, LITTLE PACKINGTON
Order Effect: Road closed to vehicular traffic.
Reason for Order: Road works for boundary box repair.
Order Commences: 20 May 2025 for up to 18 months.
Anticipated Completion: 21 May 2025.
Access & Diversion: Packington Lane, Coventry Road, Stonebridge Road, Chester Road, A446 and vice versa.
Contractor: Chevron Traffic Management Ltd, Tel: 03300 080 820.

Warwickshire County Council proposes to make the following Temporary Traffic Orders:

CHURCH LANE, CORLEY
Order Effect: Road closed to vehicular traffic from a point outside White Cottage.
Reason for Order: To enable works for domestic service connection to mains.
Order Commences: 2 June 2025 for up to 18 months.
Anticipated Completion: 6 June 2025.
Access & Diversion: Church Lane, Tamworth Road, Coventry Road, Meriden Road, Oustreine Lane, Wall Hill Road, Common Lane and vice versa.
Contractor: Fulcrum, Tel: 03302 211 202.

BERRYFIELDS, FILLONGLEY
Order Effect: Road closed to vehicular traffic from its junction with Nuneaton Road.
Reason for Order: To enable works for laying duct.
Order Commences: 4 June 2025 for up to 18 months.
Anticipated Completion: 11 June 2025.
Access & Diversion: There is no diversion available.
Contractor: Callan Connect, Tel: 01213 275 167.

SHAWBURY LANE, FILLONGLEY
Order Effect: Road closed to vehicular traffic between Newtown Lane and Broad Lane.
Reason for Order: To enable water network installation works.
Order Commences: 2 June 2025 for up to 18 months.
Anticipated Completion: 4 June 2025.
Access & Diversion: Shawbury Lane, Tower Lane, Newtown Lane, Daw Mill Lane, Tamworth Road, Station Hill, Mill Lane and vice versa.
Contractor: Chevron Tm Ltd, Tel: 03300 080 820.

For all of the above temporary orders, pedestrian access to and egress from properties and land situated adjacent to the length of road to be closed will be maintained at all times. Vehicular access will be maintained where possible.

To report any problems with these works or for further details of our current & planned roadworks visit our website warwickshire.gov.uk/roadworksmap or call us 01926 412515.

S Duxbury, Director of Strategy, Planning & Governance, Shire Hall, Warwick CV34 4RL Date 16 May 2025

PUBLIC NOTICES

LICENSING ACT 2003 - Public Notice
Kenilworth Rugby Football Club Limited is applying for the new grant of a Premises Licence for Cowpacth Playing Fields, Kenilworth Rugby Football Club, Glasshouse Lane, Kenilworth, CV8 2AL.
If granted the application will allow the following licensable activities to take place: Sale of Alcohol On the Premises and the Provision of Regulated Entertainment.
Any person wishing to make representations in relation to this application may do so by writing to the Licensing Authority: Warwick District Council, Town Hall, Parade, Royal Leamington Spa, Warwickshire CV32 4AT
licensing@warwickdc.gov.uk
Representations may only be made for 28 consecutive days from the date of this Notice.
A copy of the application for the grant of the above licence is kept by the Licensing Authority at the above address. The application can be viewed Monday to Thursday 9.00 am to 5.00 pm, and 9.00 am to 4.30 pm on Fridays, except Bank Holidays.
It is an offence knowingly or recklessly to make a false statement in connection with an application. The maximum fine for which a person is liable on summary conviction for making a false statement is a Level 5 fine on the Standard Scale. 3rd May 2025

PUBLIC NOTICES

Warwickshire County Council

ROAD TRAFFIC REGULATION ACT 1984
Warwickshire County Council has made the following Temporary Traffic Orders:

COVENTRY ROAD, THURLASTON
Order Effect: Road closed to vehicular traffic from Main Street to A45/M45 Interchange.
Reason for Order: To enable Section 278 works, weeknights only 19.00hrs-06.00hrs.
Order Commences: 20 May 2025 for up to 18 months.
Anticipated Completion: 1 September 2025.
Access & Diversion: Coventry Road, Rugby Road, Dunchurch Road, Russelsheim Way, Union Street, Bilton Road, The Green, Main Street, Magnet Lane, Lawford Lane, Rugby Western Relief Road and vice versa.
Contractor: Winvic, Tel: 07519 325 572.

CORONATION ROAD, CHURCH LAWFOED
Order Effect: Road closed to vehicular traffic between points 20 metres either side of the railway bridge.
Reason for Order: To enable essential structural maintenance works.
Order Commences: 19 May 2025 for up to 18 months.
Anticipated Completion: 20 June 2025.
Access & Diversion: Coronation Road, Coventry Road, Limestone Hall Lane, Ling Lane and vice versa.
Contractor: Centurion TM, Tel: 01320 775 360.

GIBRALTAR LANE, LEAMINGTON HASTINGS
Order Effect: Road closed to vehicular traffic.
Reason for Order: To enable engineer for pole testing and tree cutting works.
Order Commences: 20 May 2025 for up to 18 months.
Anticipated Completion: 20 May 2025.
Access & Diversion: Station Road, Napton Road, High Street, Rugby Road, Southern Road, Hospital Lane, Gibraltar Lane and vice versa.
Contractor: Sunbelt Rentals Ltd, Tel: 03700 500 792.

Warwickshire County Council proposes to make the following Temporary Traffic Orders:

KIRKSTONE, BROWNSOVER, RUGBY
Order Effect: Road closed to vehicular traffic.
Reason for Order: To enable works to lay duct.
Order Commences: 6 June 2025 for up to 18 months.
Anticipated Completion: 6 June 2025.
Access & Diversion: There is no available diversion route.
Contractor: Core Highways, Tel: 03300 169 688.

FOXONS BARN ROAD, BROWNSOVER, RUGBY
Order Effect: Road closed to vehicular traffic.
Reason for Order: To enable works to lay duct.
Order Commences: 5 June 2025 for up to 18 months.
Anticipated Completion: 5 June 2025.
Access & Diversion: Foxons Barn Road, Hawlands and vice versa.
Contractor: Core Highways, Tel: 03300 169 688.

For all of the above temporary orders, pedestrian access to and egress from properties and land situated adjacent to the length of road to be closed will be maintained at all times. Vehicular access will be maintained where possible.

To report any problems with these works or for further details of our current & planned roadworks visit our website warwickshire.gov.uk/roadworksmap or call us 01926 412515.

S Duxbury, Director of Strategy, Planning & Governance, Shire Hall, Warwick CV34 4RL Date 16 May 2025

PUBLIC NOTICES

RUGBY RUGBY BOROUGH COUNCIL

Notification by the Local Planning Authority under Regulation 30 of The Town & Country Planning (Environmental Impact Assessment) Regulations 2017 relating to the determination of an application for planning permission accompanied by an Environmental Statement

Application ref: R23/1027

Development description: Creation of an employment-led headquarters campus development, composed of head office and distribution/warehouse facilities, concept research and development retail and leisure (including gym, swimming pool, fitness studio/sports hall, sport pitches and associated facilities), ancillary food and beverage and convenience retail, onsite accommodation including a hotel and group accommodation, learning and development academy (including auditorium and training rooms), supplier offices, nursery, helipad, landscaping and ecological enhancements, site contouring, earth bunds, drainage, surface and multi-storey car parking, cycle parking, access roads, cycleways and footways, permanent ingress/egress points, utility diversions, ancillary buildings and structures, temporary construction ingress/egress, associated infrastructure and works, and demolition of existing buildings/structures.

Site address: Crowner Fields Farm and Home Farm, Hinckley Road (B4065), Ansty, Warwickshire, CV7 9JA

Planning permission has been granted, on 07-May-2025, for the above development which was accompanied by an Environmental Statement.

Members of the public may inspect a copy of the decision together with associated conditions attached to it, along with the main reasons and considerations on which the decision was based, including measures to avoid, reduce and, if possible, offset the major adverse effects of the development, as detailed in the officer's report and within the Environmental Statement accompanying the application, online at www.planningportal.rugby.gov.uk

Anyone wishing to challenge the validity of the decision would need to contact the Administrative Court of the High Court on 0207 947 6655 in order to obtain the necessary forms for lodging a challenge.

Nicola Smith MRTPI
Chief Officer - Growth & Investment

Goods Vehicle Operator's Licence

Available Transport (Leicester) LTD of 29 Maris Lane, Leicester, LE2 7NZ is applying to change an existing licence to keep an extra 1 goods vehicles and 1 trailer at Sealdon Group, Oban Road, Longford, Coventry, CV6 6HH.

Owners or occupiers of land (including buildings) near the operating centre(s) who believe that their use or enjoyment of that land would be affected, should make written representations to the Traffic Commissioner at Quarry House, Quarry Hill, Leeds, LS2 7UE, stating their reasons, within 21 days of this notice. Representatives must at the same time send a copy of their representations to the applicant at the address given at the top of this notice. A Guide to Making Representations is available at: www.gov.uk/government/publications/a-guide-to-making-representations-objections-and-complaints-goods-vehicle-operator-licensing

Goods Vehicle Operator's Licence

Vitalie Hretu Ltd, of 51 Priors Way, Birmingham, B23 5XJ, is applying for a licence to use Mitchell Potatoes, Rugby, CV23 9QQ as an operating centre for 2 goods vehicles and 1 trailer.

Owners or occupiers of land (including buildings) near the operating centre(s) who believe that their use or enjoyment of that land would be affected, should make written representations to the Traffic Commissioner at Quarry House, Quarry Hill, Leeds, LS2 7UE, stating their reasons, within 21 days of this notice. Representatives must at the same time send a copy of their representations to the applicant at the address given at the top of this notice.

A Guide to Making Representations is available from the Traffic Commissioner's office.

Goods Vehicle Operator's Licence

Available Transport (Leicester) LTD of 29 Maris Lane, Leicester, LE2 7NZ is applying to change an existing licence to keep an extra 1 goods vehicles and 1 trailer at Sealdon Group, Oban Road, Longford, Coventry, CV6 6HH.

Owners or occupiers of land (including buildings) near the operating centre(s) who believe that their use or enjoyment of that land would be affected, should make written representations to the Traffic Commissioner at Quarry House, Quarry Hill, Leeds, LS2 7UE, stating their reasons, within 21 days of this notice. Representatives must at the same time send a copy of their representations to the applicant at the address given at the top of this notice.

A Guide to Making Representations is available from the Traffic Commissioner's office.

PUBLIC NOTICES

Warwickshire County Council

ROAD TRAFFIC REGULATION ACT 1984
Warwickshire County Council proposes to make the following Temporary Traffic Orders:

VICARAGE ROAD, NAPTON ON THE HILL
Order Effect: Road closed to vehicular traffic from Fells Lane and Godsons Lane.
Reason for Order: To enable works to install in-line washout.
Order Commences: 3 June 2025 for up to 18 months.
Anticipated Completion: 5 June 2025.
Access & Diversion: Vicarage Road, Butt Hill, Southam Road, Daventry Road, Welsh Road East, Holt Road, Napton Holt Road, Thomtons Lane, Chapel Green Road, New Street, High Street, Hackwell Street and vice versa.
Contractor: Chevron TM Ltd, Tel: 03300 080 820.

For all of the above temporary orders, pedestrian access to and egress from properties and land situated adjacent to the length of road to be closed will be maintained at all times. Vehicular access will be maintained where possible.

To report any problems with these works or for further details of our current & planned roadworks visit our website warwickshire.gov.uk/roadworksmap or call us 01926 412515.

S Duxbury, Director of Strategy, Planning & Governance, Shire Hall, Warwick CV34 4RL Date 16 May 2025

PUBLIC NOTICES

LICENSING ACT 2003 - Public Notice
Morning Sunshine Coffee Ltd is applying for the new grant of a Premises Licence for 48 The Square, Kenilworth, CV8 1EB If granted the application will allow the following licensable activities to take place: sale of alcohol on the premises and provision of late night refreshment. Any person wishing to make representations in relation to this application may do so by writing to the Licensing Authority: Warwick District Council Town Hall Parade Royal Leamington Spa Warwickshire CV32 4AT licensing@warwickdc.gov.uk. Representations may only be made for 28 consecutive days from the date of this Notice. A copy of the application for the grant of the above licence is kept by the Licensing Authority at the above address. The application can be viewed Monday to Thursday 9.00 am to 5.00 pm, and 9.00 am to 4.30 pm on Fridays, except Bank Holidays. It is an offence knowingly or recklessly to make a false statement in connection with an application. The maximum fine for which a person is liable on summary conviction for making a false statement is a Level 5 fine on the Standard Scale. 7th May 2025

PUBLIC NOTICES

JAGDEESH SINGH (Previous name: Jagdeesh Singh Dhillon) (Deceased)

Pursuant to the Trustee Act 1925 any persons having a claim against or an interest in the Estate of the above named, late of 196 Sullivan Road, Coventry, CV6 7JT, who died on 21/07/2022, are required to send written particulars thereof to the undersigned on or before 17/07/2025, after which date the Estate will be distributed having regard only to the claims and interests of which they have had notice.

Didar Singh Dhillon, The London Gazette (49962), PO Box 3584, Norwich NR7 7WD

PUBLIC NOTICES

BARRIE JOHNS (Deceased)

Pursuant to the Trustee Act 1925 any persons having a claim against or an interest in the Estate of the above named, late of 7 Woodcote Road Leamington Spa Warwickshire, CV32 6PZ, who died on 26/01/2025, are required to send written particulars thereof to the undersigned on or before 17/07/2025, after which date the Estate will be distributed having regard only to the claims and interests of which they have had notice.


Field Overall LLP, 42 Warwick Street Leamington Spa Warwickshire CV32 5JS

To advertise call 02476 011 777

ANNOUNCEMENTS

DEATHS

BENNETT
Pearl "Grandma"



Passed away peacefully on 22nd April 2025, aged 88 years. Beloved wife to Martin, much loved mum to Stephen, Richard, Jane and Ann. Grandma to the whole family. Pearl will have a funeral service at Rainsbrook Crematorium on 22nd May at 11am for friends and family. The family would like to thank the staff at Dewar Close Care Home for all their care and support of Pearl. She will be sadly missed by all.

DEATHS

BENCH
Peter Desmond "Benchy"



Late of Sir Thomas Knight Care Home, Blyth, formerly of Kirton Close, Whitnash. Beloved husband of Sheila and father to Sharon and the late Simon. Brother to Robert

"Dementia stole him from us, long before his last breath. We miss the man he was and we mourn the years that were stolen from him and us"

A man who lived and breathed the Golf Course

Funeral Service / Celebration of life to be held at St Margarets Church, Whitnash on Saturday 24/05/25 at 1pm, with wake to follow at Leamington & County Golf Club at 2pm Dress Code - Smart

If you have a message for a loved one, call our team on 01527 588688

PUBLIC NOTICES

Keeping you up to date with all the latest information on Planning Proposals, Traffic Notices, Goods Vehicle Operator Licences, Probate Notices.....

Classified

TELEPHONE 01527 588688 FACSIMILE 01527 584371

FUNERAL DIRECTORS

Henry Ison & Sons Funeral Directors
A Funeral Plan to suit you



Plan ahead with a Choice Funeral Plan
Visit henryison.co.uk/choice
02476 997 811
Branches in Coventry (Binley Rd, Allesley Old Rd and Daventry Rd), Kenilworth and Leamington Spa

choice funeral directors

For terms, conditions, exclusions and limitations, visit choiceplan.co.uk/terms

If you have a message for a loved one, call our team on **01527 588688**



SALES & WANTS

MISCELLANEOUS

BEDS NEW Doubles £95 Singles £59 King size £159. Second hand doubles £49 Singles £29 Fridges £49 Freezers £59 Can deliver 07703 925662

RECLINER CHAIR electric rise & recline £169 Manual recline chair £60 High seated chair £40 Can deliver 07703 925662

3 section aluminum extending ladder £65 01788 571164

LADDER stand off bracket £10 01788 571164

3 Tier digital steamer as new £10 07761593447

LAWN bowls complete with bag (2 sets) good condition £50 01926 651906

SUN lounge VGC £25 07761593447

BALL Gown Dress ideal for prom or cruise colour mauve with belt size 10 £10 07761593447

FREE leather chair, electrics not working 01564 826586

MISCELLANEOUS

MOTORCYCLE carrier fits to car towbar £100 ono 07933245121

TWO Fishing rods & 1 fly fishing reel quality make £15 07933245121

GOLF Balls all good names & condition 60 balls £16 01564 784171

5 Cliff Richard wall plates with hangers £40 ono 0121 624 3694

BRASS coal or log bucket £20 0121 624 3694

CLEAR dome stand with 60thimbles collectable £35 0121 624 3694

DOMESTIC overlocker Toyota 4 thread for sewing £40 0121 624 3694

FLATBED sewing machine Super Geans £40 0121 624 3694

DPER neck massage pillow £30 0121 624 3694

2 seater settee & armchair cane (flame resistant labels on) £75 0121 624 3694

WANTED

****WANTED: Vinyl Records CDs Cassettes Vintage or New****
Seeking classic rock, jazz, indie and rare finds. Cash paid
Call or text: 07765 142354 Or 01527 893992
Or email: welston@live.com
Paul (Albatross & Doomed Records)

SERVICES

CONSERVATORIES & GLAZING

DOUBLE GLAZING REPAIRS

Locks, Hinges, Handles, Glass, Windows or Doors
New Doors/Windows
Also Supplied/Fitted
07973 200 623

DRIVEWAYS

COVENTRY DRIVEWAYS

- Block paving • Slabs • Fencing • Gravel
- Turf & Artificial Grass • Decking, Steps and more

7 Years Warranty on all projects
Payment only after completion

02476 274439 07740 101227
www.spanglefish.com/coventrydriveways

GARDENING SERVICES

STUART'S GARDENING SERVICES

Landscaping & Tree Surgery
Fencing, Slabbing, Turfing, Block Paving, Bases, Mowing, Decking, Roofing and Guttering.
Mini-digger/Dumper
Fully Insured. Registered carrier of waste.
FREE ESTIMATES
02476 305992 • 07813 790889
01788 211064
www.stuarts-gardening-services.yolasite.com

HOME IMPROVEMENTS

HANDY MAN

If you're looking for a fast and reliable service
Then call Lenny

- Plastering • Plumbing • Fencing
- Gardening • Flooring • Kitchens
- Bathrooms • Carpentry • Flat pack furniture
- Tiling • Painting

02476 443 996
07794 784 266
NO VAT CHARGE

KITCHENS

S.W INSTALLATIONS

Kitchens & Bathrooms

FREE DESIGN & QUOTATION
QUALITY KITCHENS & BATHROOMS SUPPLIED & FITTED
PLUMBING, CARPENTRY, TILING, WORKTOP & DOOR REPLACEMENT
(Supply & fit, supply only or fit only)
LOCAL TRADESMAN
20YRS EXPERIENCE
NO JOB TOO SMALL
01926 773386 or 07971 684 353



To advertise call **02476 011 777**



NEED AN EXPERT?
THEY'RE HERE IN OUR CLASSIFIED PAGES
- ALL WAITING TO HELP!
GIVE THEM A CALL!



GENTLE TOUCH

We love hearing from you!

TO SUBMIT A FREE ADVERT PLEASE EMAIL freeads@bullivantmedia.com

<p>CoventryObserver.co.uk</p> <p>Website: www.CoventryObserver.co.uk</p> <p>Twitter: www.twitter.com/coobservernews</p> <p>NEWSDESK 01527 588657 Editor: tristan.harris@coventryobserver.co.uk</p> <p>ADVERTISING 01926 317111 National & Agency: mediat@coventryobserver.co.uk 0207 832 1649 Email: adverts@coventryobserver.co.uk</p> <p>SPORTSDESK 01527 588659 Sport: sport@coventryobserver.co.uk</p>	<p>Online Newspaper: www.CoventryObserver.co.uk/editions</p> <p>Facebook: www.facebook.com/CovObserver</p>
<p>LeamingtonObserver.co.uk</p> <p>Website: www.LeamingtonObserver.co.uk</p> <p>Twitter: www.twitter.com/leamobs</p> <p>NEWSDESK 01527 453737 Editor: editor@leamingtonobserver.co.uk</p> <p>ADVERTISING 01926 317140 National & Agency: mediat@leamingtonobserver.co.uk 0207 832 1649 Email: adverts@leamingtonobserver.co.uk</p> <p>SPORTSDESK 01527 588659 Sport: sport@leamingtonobserver.co.uk</p>	<p>Online Newspaper: www.LeamingtonObserver.co.uk/editions</p> <p>Facebook: www.facebook.com/leamington.observer/</p>
<p>Rugby & Lutterworth Observer.co.uk</p> <p>Website: www.RugbyObserver.co.uk</p> <p>Twitter: www.twitter.com/RugbyObserver</p> <p>NEWSDESK 01527 453737 Editor: editor@rugbyobserver.co.uk</p> <p>ADVERTISING 01527 453743 National & Agency: mediat@rugbyobserver.co.uk 0207 832 1649 Email: adverts@rugbyobserver.co.uk</p> <p>SPORTSDESK 01527 588659 Sport: sport@rugbyobserver.co.uk</p>	<p>Online Newspaper: www.RugbyObserver.co.uk/editions</p> <p>Facebook: www.facebook.com/rugby.observer</p>

CRS LTD
 Spring Lane South, Malvern WR14 1AT
 ATFs are the **ONLY** legal way to scrap your vehicles
BUYERS
 of all SCRAP Metals and SCRAP Vehicles
 The **ONLY** authorised treatment facility in Malvern!
 Best Prices Paid • Collection & Skip Drops Farm
 Equipment, Copper, Brass etc. • 50 Ton Weigh Bridge
ID REQUIRED - 01684 578081
 www.crs-malvern.co.uk

Observer SPORT



9 772040 128006
 Published by Bullivant Media Group Ltd, Webb House,
 Church Green East, Redditch, Worcestershire, B98 8BP
 Printed by Newsquest, Newspaper House, Osney
 Mead, Oxford, Oxfordshire, OX2 0EJ

VINYL RECORDS WANTED
 Buying since 1978
 Get your cash TODAY!
 I will come to you
Phone PAUL
01527 893992 | 07765 142354

www.rugbyobserver.co.uk BRINGING YOU ALL THE LATEST SPORTS NEWS AND VIEWS FROM THE AREA

Swimmers star on national stage

by Aaron Sutcliffe
 aaron.sutcliffe@bullivantmedia.com

SWIMMING: RUGBY Swimming Club's artistic swimmers won five medals competing at the prestigious Swim England National Championships.

The National Championships mark the highest-level competition for artistic swimmers in the country.

And the event took place at the Harvey Hadden Sports Village in Nottingham.

Rugby took an impressive squad of 18 swimmers to the National Championships, competing against the best junior and senior swimmers in England.

And Rugby began the competition with a medal in the technical solo event as Eve Young's outstanding performance to Queen's 'Love of My Life' secured her silver in both the junior and senior age groups.



In the technical duet, Rugby's Imogen Ravenhall and Matilda John place fifth in the junior category. And Young also swam in the event alongside her Great Britain partner

Robyn Swatman from Walsall as the duo won gold in the senior category.

In the acro routine event, Rugby's Rebecca Harper, Natalia Rodrigues, Emilia Owen, Amy Buckley, Alexa Holland, Beatrice Banks, Saranne Black, Poppy Williams and Chloe Barrett-Leaf performed their Chicago routine and finished seventh in a hotly contested category.

Rugby medalled again in the free team event as the squad of Tyra Watson, Eve Nelson, Olivia Barry, Olivia Eaves, Chloe Bartholomew, Williams, Owen, Buckley, Ravenhall and John took silver with their 'Pink Ladies' themed routine.

And Young claimed a fourth medal in the free duet with Swatman, winning gold in the senior category with the pair to compete on the international stage in the coming months.

Rugby's technical team of Barry, Eaves, Nelson, Ravenhall, Bartholomew, Young, Watson and Molly Doolin took part in the final

event of the competition.

The squad swam a high-energy routine set to the dance anthem 'Everybody Dance Now' and finished fourth to just miss out on a medal by two points.

Rugby's head coach Hannah Secher said: "I'm so proud of the swimmers and their performance."

"I think it's important to share that this competition is the highest level our young swimmers can compete at."

"National Championships is a prestigious event and to qualify is an achievement in itself."

"With our young swimmers studying for both GCSE's and A Levels, battling injuries and increased training - to place second in the free team event, fourth in tech team and with significant improvements and achievements in solo, duet and acro events, is a testament to everyone's hard work and determination."

Rugby Swimming Club's artistic swimmers at the National Championships. s

CASHBROKERS

LEAMINGTON SPA

CASH PAID
**FOR GOLD, SILVER,
 COINS & BULLION**

- PAWNBROKING LOANS
- SCRAP GOLD & SILVER
- BUY BACK
- JEWELLERY & WATCHES
- COINS & BULLION



01926 258252

144 Parade, Leamington Spa, CV32 4AG
 www.cashbrokersleamingtonspa.co.uk






50% OFF EVERY WEEKEND

when you spend £15



SAVE
UP TO
£15

THE TAKEAWAYS YOU LOVE, IN A TAP



*Offer available Friday-Sunday between 9am and 11.59pm. Offer ends 11.59pm on 25th May. Min spend £15, maximum discount £15. Subject to availability. Selected restaurants only. Certain products excluded. Geographical restrictions, service and delivery fees apply. For full T&Cs see deliveroo.co.uk/terms.



FAMILY TIME

CHIPPY TEA



POST-FOOTIE FEAST

DATE NIGHT IN



THE 2AM TREAT

SUNDAY RECOVERY



SLICE OF THE PARTY

**THE TAKEAWAYS
YOU LOVE, IN A TAP**



*Subject to availability, geographical restrictions, service times, service fees and delivery fees apply.