



# Observer

Rugby & Lutterworth 

Friday, May 23rd 2025 Week 21

 facebook.com/rugby.observer

rugbyobserver.co.uk

 @rugbyobserver t: 01926 451900

Your **FREE** edition - just pick one up and keep up with the news

Get 50% OFF this  
long weeeeeee  
eeeeekend



**SAVE  
UP TO  
£15**

**THE TAKEAWAYS  
YOU LOVE, IN A TAP**

\*Offer available Friday-Sunday between 9am and 11.59pm. Offer ends 11.59pm on 25th May. Min spend £15, maximum discount £15. Subject to availability. Selected restaurants only. Certain products excluded. Geographical restrictions, service and delivery fees apply. For full T&Cs see deliveroo.co.uk/terms.



deliveroo



# Get 50% OFF this weeeeeee weekend



**SAVE  
UP TO  
£15**

\*Offer available Friday-Sunday between 9am and 11.59pm. Offer ends 11.59pm on 25th May. Min spend £15, maximum discount £15. Subject to availability. Selected restaurants only. Certain products excluded. Geographical restrictions, service and delivery fees apply. For full T&Cs see [deliveroo.co.uk/terms](https://deliveroo.co.uk/terms).

# Hitting the road to help support two key charities

by **Andy Morris**  
andy.morris@bullivantmedia.com

AN 'EXCITED but nervous' cycling enthusiast is gearing up to ride over 780 miles from his Rugby workplace to Leipzig in Germany to support two charities close to his heart.

Richard Kelly is taking on the challenge next month to raise money for suicide prevention charity Papyrus in memory of his teenage son's friend who died by suicide earlier this year.

He is also raising funds for Overgate Hospice in Yorkshire, which looked after his friend who died of a brain tumour.

Richard will set off on his six-day adventure from the Rugby HQ of Deponti, where he works as an account manager, and ride through the UK, France, Belgium and The Netherlands before ending his epic journey at the company's showroom in

Artern, Germany.

Richard said: "I'm excited but also a little nervous about the journey ahead - but knowing that every mile I pedal will contribute to Papyrus and Overgate Hospice makes it all worthwhile."

He said he was taking on 'Le Tour Deponti' not just as a test of endurance, but also as a mission to make a difference to the lives of those in need.

He said: "I'm cycling to support Papyrus as a friend of my 15-year-old son died by suicide in January. He was a good friend to my son as they walked to school most days. He is sadly missed by everyone."

"Suicide is the biggest killer of people aged 35 and under in the UK. Donations raised from my ride will go directly towards their suicide prevention helpline."

Richard is also cycling in memory of his good friend Joe Kitcher.

He said: "I met Joe when I was 17. No one would ever forget Joe if they met him. He taught me all about sales, and we played Sunday league football together for several years."

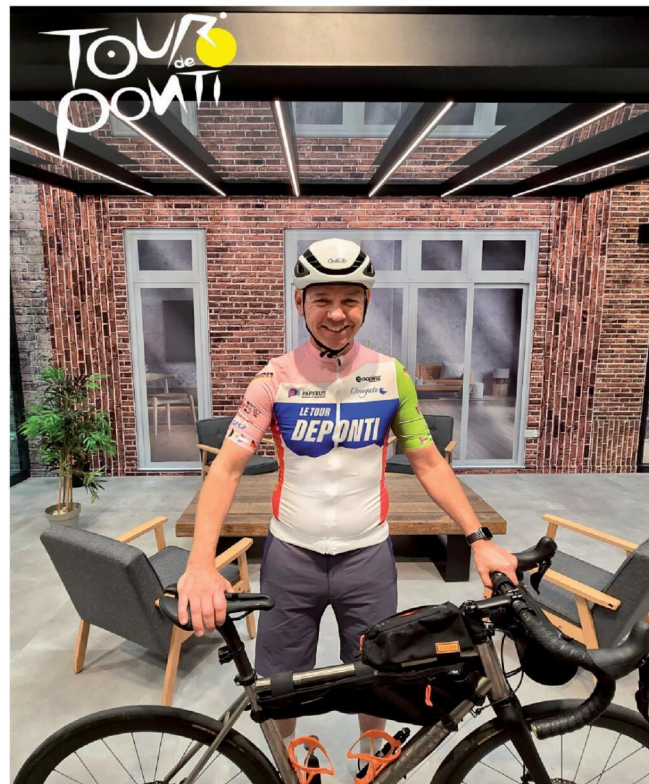
"Sadly, Joe died of a brain tumour in 2018, he was only 58."

"His palliative care was given by Overgate Hospice. They are currently in need of extending their facilities and need as many donations as possible to support their 'Big Build Project'."

Richard sets off on 'Le Tour Deponti' on June 14.

Visit [www.justgiving.com/page/richard-kelly-2](http://www.justgiving.com/page/richard-kelly-2) to donate to his Papyrus fund-raiser, or [www.justgiving.com/page/letourdeponiti](http://www.justgiving.com/page/letourdeponiti) to contribute to his Overgate Hospice campaign.

**Richard Kelly is 'excited but nervous' to be taking on 'Le Tour Deponti' in June.**



Tel: 0800 3032559  
Mob: 07773 911552  
[www.drives4u.co.uk](http://www.drives4u.co.uk)

**Are you looking to improve or enlarge your driveway or patio?**

We can provide you with a beautiful new patio or driveway in Coventry, Bromsgrove, Redditch, Solihull, Leamington, Kidderminster and Birmingham

**5 Year guarantee**

- We've designed and built just about every shape and size of driveway and patio you can imagine, so we will not be phased by your project.
- We strive to achieve 100% satisfaction and unlike other driveway companies, with us you pay absolutely nothing upfront.
- Give us a call and you could save upto £1000



**Tel: 0800 3032559 | Mob: 07773 911552 | [www.drives4u.co.uk](http://www.drives4u.co.uk)**

**Championing the needs of Rugby residents since 1991 and delivering the news to you every week**

# The cars will be the stars

THE BRITISH Motor Museum will be parking up some vintage motors at a classic car show in Leamington raising money for local charities.

More than 300 classic cars from across the Midlands are expected to line up in the Pump Room Gardens on Sunday June 1 for the annual Cars at the Spa (CATS) show, organised by Leamington Rotary Club in this, its centenary year.

Rotary president Linda John said: "I am very pleased that the British Motor Museum will again be taking a stand and displaying some classic cars from its collection, and also providing a prize for a

competition promoting the event.

"The event gets bigger each year with thousands of people enjoying one of the town's loveliest parks, live entertainment, picnics on the grass by the river, snacks, drinks and, of course, the stars of the show - hundreds of classic cars."

"Last year we had a big increase in visitors from far and wide and we raised £8,500 for local charities and this year we are supporting Blood Bikes and Support Dogs."

Mark Treadwell, marketing officer at the Gaydon-based museum, was looking forward to the day.

He added: "We

were at the first Cars at the Spa event six years ago and we are delighted to be coming back.

"It's important to support the local classic car community and this is a great chance to showcase the amazing work we do as well as inspire the next generation of classic car owners."

Startin Kia Warwick and Motor Hub Warwick are the show's headline sponsors, and Leamington BID is also helping finance the event.

The free to attend show runs from 10.30am to 4pm. Anyone wishing to enter a car should visit the website at [www.carsatthespa.co.uk](http://www.carsatthespa.co.uk)



Rotarians Linda John and Simon Evans (left) with Mark Treadwell at the British Motor Museum.

Latest news and sport online  
[www.coventryobserver.co.uk](http://www.coventryobserver.co.uk)

# New ways to help stop accidents on Fosse Way

by Ian Hughes  
[ian.hughes@bullivantmedia.com](mailto:ian.hughes@bullivantmedia.com)

**A HIGH-TECH scheme is aiming to reduce accidents on the Fosse Way.**

The busy road has been an accident hotspot for many years which prompted Warwickshire County Council (WCC) to team up with Arcadis and Michelin to pioneer an innovative, data-driven approach to road safety.

Using advanced digital tools and near-miss data, the approach shifted the focus from reactive collision analysis to proactive risk identification.

An online tool was developed, integrating driver behaviour data and machine learning to identify high-risk locations.

This enabled WCC to target particular hotspots along the road in a bid to prevent potential accidents.

Scalable and adaptable, it has set a benchmark for how technology can transform road safety and transportation planning.

The team recognised the limitations of collision data to tackle increasing road casualties along the Fosse Way. With collisions distributed throughout the length of the road, which runs through the heart of Warwickshire, with a variety of causes, it was a challenge to identify what countermeasures to invest in and where – and to do so proactively, rather than only investing after people



An innovative, data-driven approach to road safety is being taken on the Fosse Way.

had been injured and lives lost.

The team integrated big data, engineering expertise and machine learning to create a solution, specifically using near-miss data as a predictive indicator of future road safety risks.

This was delivered through a cross-industry partnership with Arcadis' engineering expertise, Michelin's advanced information technology used for vehicle tracking and monitoring, and leadership from WCC.

And the scheme was highly commended in the Innovation and Research category at the recent Chartered Institution of Highways and Transportation (CIHT) West Midlands AGM Awards.

Mark Ryder, WCC's executive director for communities, said: "Our interventions to make our roads safer have always been driven by evidence and data but this scheme takes that a step further and addresses risks before incidents occur, not after. By partnering with Arcadis and Michelin, we've been able to pioneer a proactive

method using advanced digital tools and near-miss data. It's truly innovative and will be invaluable in making our roads safer."

\* A PROJECT to improve the safety of an accident spot in Leamington was also acclaimed as being among the best examples of civil engineering at the awards.

The Harbury Lane/Fosse Way junction scheme, was among those put forward for consideration by the judges in the highway projects under £5million category.

It tackled safety problems potentially posed by the increased housing developments in the area and the increased pressure on surrounding roads. Improvements included the construction of retaining walls to allow widening of the roads, traffic signals and street lighting.

**ANTIQUE & VINTAGE FAIR**  
**SUNDAY 25TH MAY**  
 UP TO 100 STALLS **ENTRY 9AM - 2PM**  
 Sky Blue Sports Connection Ryton on Dunsmore CV8 3FL  
 Free parking & café - Entry £3, under 18's FREE  
 Dogs are welcome  
 Contact 07939 445024 [www.gjfair.co.uk](http://www.gjfair.co.uk)

entertainers present

**RADIO GaGa**

THE ULTIMATE TRIBUTE TO **QUEEN**

SCAN & BOOK

Royal Spa Centre & Town Hall

**FRI 6 JUN 7.30PM**  
**LEAMINGTON SPA 01926 334418**  
**BOOK: [royalspacentreatndtownhall.co.uk](http://royalspacentreatndtownhall.co.uk)**

**PUBLIC NOTICES**

For all your latest information on Planning Proposals, Traffic Notices, Goods Vehicle Operator Licences, Licences To Sell Alcohol and Probate Notices...

See page **36**

# Tributes paid to 'force of nature' Hannah

by Ian Hughes  
ian.hughes  
@bullivantmedia.com

**COLLEAGUES** have paid tribute to Hannah Deacon whose campaign for the use of medical cannabis to treat epilepsy helped change the lives of thousands of patients and families, including that of her own son Alfie.

The Kenilworth mum of two, who died from cancer earlier this month aged just 45, was described as a "force of nature" for the pivotal role she played in changing the law in Britain on the use of the drug for medical purposes.

Hannah and fellow campaigners celebrated in 2018 when the government legalised the use of medical cannabis.

Alfie, then aged seven, had been suffering 30 seizures a day, but – after becoming the first patient in the UK to receive a permanent cannabis licence, which meant his doctors could prescribe what was then a schedule one drug on the NHS – they reduced dramatically.

Hannah continued campaigning for others families



Hannah Deacon and son Alfie. Picture by www.hannahdeacon.co.uk

who were still being denied NHS access to the treatment.

She was also an active member of the Cannabis Industry Council, which paid tribute in a joint statement issued by the charity's co-chairs.

They said: "Hannah was an absolute force of nature, concerned with protecting the life chances of not just her own children, but many others in similar situations. It was clear to those of us who knew Hannah that she would stop at nothing to achieve this."

"It is no exaggeration to say that without Hannah, medical cannabis would likely not be legal today."

Tribute was also paid by Tonia Antoniazzi MP,

who chairs the All-Party Parliamentary Group on Medical Cannabis on or under Prescription, and who worked closely with Hannah.

She said: "The work she has done has changed the life of so many young children living with epilepsy. This woman was incredible."

Hannah's death on May 6, following "a short and brutal illness", was announced on her website.

It said: "This devastating loss to Hannah's beloved partner Drew, and children Alfie and Annie, is impossible to put into words."

"Hannah was remarkable – determined, tenacious, and fiercely compassionate. Her fight to find treatment for her son Alfie's rare and severe epilepsy led to a breakthrough that changed his life and ultimately changed the law. She went on to transform the lives of thousands of patients and families, never stopping in her work to push for better access, better care, and a better understanding of medical cannabis."

## 'Hearts and minds' to be focus for new Mayor's year

**COUNCILLOR** Barbara Brown has become the new Mayor of Rugby.

Coun Brown was appointed Mayor at Rugby Borough Council's annual meeting. She has represented the New Bilton Ward since 2019.

Coun Brown grew up in St Andrew's Crescent in Rokeby, living in one of the first council homes built after the Second World War before moving to Hillmorton.

She worked as a secondary school teacher before taking on an advisory education role, working at schools across Warwickshire.

Coun Brown and her late husband, Richard, have a son, Kieren, and



daughter, Elspeth, who takes on the role of Mayor's Consort during her mother's mayoral term.

Coun Brown has chosen 'hearts and minds' as her mayoral theme, with

plans to promote mental and physical wellbeing throughout her year in office.

She chose to support two charities close to her heart - Papyrus Prevention of Young Suicide

**Coun Barbara Brown** is the new Mayor of Rugby.

and the Myton Hospices – with her late husband Richard having received palliative care at Myton, and one of her students having died by suicide.

She said: "As Mayor, I'll do my very best to promote this town, its residents and the council."

The appointment of a Deputy Mayor was deferred until next month's meeting of full council.

Anyone interested in supporting the Mayor's charities can email the.mayor@rugby.gov.uk or call (01788) 533523.

Visit www.rugbyobserver.co.uk for more.

## Spring Arrives

at the garden lover's garden centre

**Harefurlong Nurseries**

www.farnboroughgardencentre.co.uk

A traditional garden centre that focuses on providing quality plants, garden products, homeware and gifts

**national Garden Gift voucher**

**AQUATIC PLANTS**

**TUB & BASKET PLANTS**

**VEGETABLE PLANTS**

**SUMMER BEDDING**

**Treasured Teddies**

AT FARNBOROUGH GARDEN CENTRE

Come & visit our Treasured Teddies shop & see our massive selection of cuddly collectables & furry friends including especially loveable limited editions and everyday huggables

**A world of Choice**

**OPEN 6 DAYS A WEEK**

**Tues-Sat 9-5.30pm**  
**Sun 10.30-4.30pm**  
**Open Bank Holiday Mondays**

On A423 Southam Road, Nr Farnborough, Banbury, OX17 1EL  
Tel 01295 690479

customersales@farnboroughgardencentre.co.uk

**WHERE THINGS FOR YOUR GARDEN WON'T COST YOU THE EARTH**

# Reform councillor named new leader

**NEWLY-ELECTED Reform UK councillor Rob Howard is the new leader of Warwickshire County Council (WCC) following the historic local election result.**

Reform UK became the largest party on Warwickshire County Council after securing 23 of the 57 seats – just six short of a majority – having started with none when the polls opened.

Coun Howard, who won the Attleborough ward in Nuneaton, has had an extensive career in sales and marketing, rising from representative to managing director. He ran his own consultancy business from 2004 to 2022 and lives with his partner of 20 years.

Coun Howard said: "What we have achieved here is incredible. From a standing start we are now the largest party on the council.

by Ian Hughes  
ian.hughes@bullivantmedia.com

The people of Warwickshire have given this council a mandate for serious change, and we look forward to delivering for them."

There is work to do over the coming weeks as WCC has been left in no overall control after the Conservatives, who had ruled since 2017, were left with just nine seats, having previously held 41 before voters went to the polls. Long-time Tory council leader Izzi Seccombe was among those who lost her seat.

Reform has alluded to the possibility of working with other parties to run WCC, which remains under major financial pressure, having committed to £21.8million in budget reductions for 2025/26, increasing to £79.6 million by 2030.

The Liberal Democrats are now the second largest party at Shire Hall with 14 seats, having gained a further nine, while The Green Party has seven seats, after winning a further four.

Labour lost three seats, leaving them with just three councillors, with one independent seat held by The Whitnash Residents' Association.

Reform's success in Warwickshire reflected the surge in support for the party which took control of ten local councils up and down the country, won two mayoral races and added a fifth MP to its ranks in the Runcorn and Helsby by-election.

Nationally, Reform UK secured 677 seats with 31 per cent of the vote share – the first time a party other than the Conservatives or Labour have won these elections in modern British political history.

\* Coun Edward Harris (Baddesley



New Warwickshire County Council leader Rob Howard celebrates Reform UK's success with party leader Nigel Farage.

and Dordon) has been elected the new chair of WCC, taking the reins from outgoing chair Coun Chris Mills. Coun Dale Keeling (Dunsmore and Leam Valley) will serve as vice-chair.

The role of chairman is to chair

the meetings of full county council, which take place every six weeks and bring together all members of the council from all political groups. It is also a civic role in which the chair formally represents WCC at public events.

## Stores warned as sales of disposable vapes to be banned from June 1

A BAN on the sale of disposable vapes comes into force next month.

Warwickshire County Council's (WCC) Trading Standards Service is advising retailers to stop purchasing new stocks of single use vapes and ensure they sell any existing stocks before June 1.

Retailers must then stop selling or offering for sale single use vapes, whether or not they contain nicotine, remove them from their store, including online stores, and arrange for them to be collected by a registered vape recycling service.

Retailers who fail to follow the law and continue to sell dispos-

able vapes after the ban face having these products seized by trading standards and could face a fixed £200 fine. Repeat offenders could also be prosecuted.

Retailers can continue to sell reusable vapes. These must have a battery you can recharge and be refillable with vape liquid, either by filling up the tank or

cartridge with e-liquid or inserting new pre-filled pods.

WCC communities spokesperson Mark Ryder said: "We're urging all retailers to take immediate action in preparation for the forthcoming ban on the sale of disposable vapes.

"Retailers found in breach of the law risk having products

seized and receiving a fixed penalty of £200, with repeat offences potentially leading to prosecution, so compliance is essential to avoid enforcement action."

Retailers can visit [www.citizensadvice.org.uk/consumer/get-more-help/if-you-need-more-help-about-a-consumer-issue/](http://www.citizensadvice.org.uk/consumer/get-more-help/if-you-need-more-help-about-a-consumer-issue/) for more information.



# SPRING SALE

## ECONOMY CLASS PRICE, FIRST CLASS FEATURES



The scooter features 8" alloy style wheels, a detachable frame design, and a comfortable folding seat, aiding a smoother, more enjoyable journey. The Apex is the perfect travel partner, helping you get where you need to go. Easily breaks down for transportation giving you freedom and independence.

# £699.99

or  
\*£32.64  
per month

# Save £200

was £899.99



\*APR 29.9% deposit £50.00 24 payments of £32.64 total payable £833.36 Please note finance it through Snap Finance. They are the credit broker Max Mobility Ltd is the introducer. Snap Finance will provide you with all their terms and conditions. APR may be higher or lower depending on personal circumstances. Call for details

CALL TO  
BOOK YOUR  
SCOOTER  
SERVICE

# 02476 630444

Max Mobility Ltd, 7 Sherbourne Arcade,  
Coventry, CV1 1DN (opposite Home Bargains)  
[www.maxmobilityltd.co.uk](http://www.maxmobilityltd.co.uk)

Pictures for illustration • Prices with VAT Exemption

# Suspect arrested after operation by loan sharks team

by **Tristan Harris**  
tristan.harris@bullivantmedia.com

**AN ILLEGAL money lending suspect was arrested in Coventry on Wednesday (May 14) as part of an operation.**

The 46-year-old was held following the swoop by the England Illegal Money Lending Team (IMLT).

The IMLT worked in partnership with officers from West Midlands Police to execute the warrant at an address in the Upper Stoke area.

Officers seized cash and electronic devices and the suspect was taken into custody to be questioned by IMLT investigators.

The IMLT works in partnership with Coventry Trading Standards Service to investigate and prosecute illegal money lenders.

Dave Benbow, head of the IMLT, said: "Illegal money lending has a devastating impact on vulnerable people and whole communities and we are committed to working together to fight this criminal behaviour."

The IMLT urged anyone who has information on illegal money lending or has borrowed cash from an illegal lender to get in touch.



The IMLT arrested a suspect in Coventry this week. s

They are unregulated and give loans with no paperwork, adding extra charges and high interest rates.

They can resort to threats, intimidation and even violence if repayments are not made.

Unauthorised lenders do not complete affordability checks on borrowers – often meaning they are lending to people who cannot pay them back.

These borrowers do not have the protection of consumer law such as cancellation periods and the ability to apply for help if they cannot

pay. This causes huge amounts of stress and can impact their other finances, leaving them unable to pay rent or other priority bills.

Anyone affected by illegal money lending should call the Stop Loan Sharks 24/7 helpline on 0300 555 2222.

Alternatively, access support online at stoploansharks.co.uk via Live Chat is available on the website from 9am to 5pm, Monday to Friday.



Some of the illegal vapes, counterfeit tobacco and prescription drugs found at a shop in Foleshill Road.

## Raid on shop finds illegal vapes and fake medicines

**THOUSANDS of pounds worth of illegal vapes and counterfeit tobacco have been seized in Coventry.**

Officers from Coventry Police's North East neighbourhood team and Trading Standards officers found the goods at a shop in Foleshill Road last Monday (May 12).

During their visit, a man

ran away from officers but was stopped and searched.

The team then searched a nearby van which was full of illegal vapes, counterfeit tobacco and prescription drugs worth around £10,000.

Police enquiries are continuing alongside investigations by Trading Standards officials.

Retirement Villages is part of AXA IM Aits

New homes to buy and rent

Say 'hello' to retiring differently at **Lime Tree**

Dunchurch, Warwickshire

RETIREMENT VILLAGES

Enjoy catch-ups in the clubhouse, morning walks through the grounds, and trying new hobbies. Join us for coffee and cake, explore the fantastic facilities, meet the team and find out more about what life could be like for you. Say 'hello' to retiring differently, at Lime Tree.

Reserve your spot at our **Discovery Day** Wednesday 4th June, 10am-12pm

Reserve your place here

Places are allocated by appointment only, so book yours to join in!

01788 462 214  
limetreevillage.co.uk



LEFT: Anthony Lane, right, with parents Paul and Penny and siblings Richard and Kat.



RIGHT: Paul and Penny Lane with Sutton Coldfield MP Andrew Mitchell (left) at last year's screening event. Picture by Gerry and Carolyn McLaughlin.

# Screening day aims to save lives

**A PIONEERING screening programme to identify heart conditions in the young – set up in memory of a talented Rugby man who died suddenly due to an undiagnosed condition – is being rolled out again.**

by **Andy Morris**  
andy.morris@bullivantmedia.com

Anthony Lane died in 2022 at the age of just 26 when he suffered a cardiac arrest while exercising.

Now his dad Paul is putting on the second cardiac screening day in his son's memory, after last year's event potentially saved three lives by identifying potential heart conditions.

Paul, the president of Wylde Green Rotary Club in Sutton Coldfield, has secured Rotary grants and headed up money-raising campaigns to fund the initiative which is so close to his heart.

He said: "One Saturday morning, Anthony was on his turbo trainer bike at home, exercising alone. His partner returned home after shopping to find him unresponsive on the floor. West Midlands Ambulance Service and the Air Ambulance attended but unfortunately Anthony had already passed away."

"It is believed Anthony had an undiagnosed heart condition from which he had no symptoms. It is likely that Anthony's heart 'short-circuited' and went into a lethal arrhythmia called ventricular fibrillation that causes sudden cardiac death if not treated immediately with CPR and defibrillation."

Anthony was a talented mechanical engineer who landed his

dream job at Mercedes F1 in Northamptonshire.

His death led his family to the Cardiac Risk in the Young (CRY) charity, which works to prevent young sudden cardiac deaths through awareness, screening and research, and which supports affected families.

Paul added: "They say events happen for a reason, and Anthony's passing away and our work with CRY has given us the ability to organise the screening session, which we're hoping we can do long term, and at the end of that we may have saved a young person's life."

The screening day at Sutton Coldfield Town FC – which will be attended by Anthony's friends and family – takes place on June 29, with plans afoot for a possible extra screening day in Rugby. CRY CEO Dr Steven Cox said:

"It's great news that our screening team will be returning to Sutton Coldfield to test the hearts of at least 100 more young people from the local area, in memory of Anthony Lane."

"I know that through this ongoing collaboration we will be able to identify more young people who may be at risk of 'hidden' heart conditions and ensure they are referred for appropriate investigations and treatment pathways."

Paul, who now lives in Lichfield, said: "Anthony was a perfectly healthy young person who, like all young people, didn't go to the doctor and who thought he was invincible. One minute he was perfectly fit on his turbo trainer, the next minute he's gone."

"It is so tragic that this happened but we like to think of this project as a lasting memorial to him."



Anthony's friend Charlie Hodgson gets screened at last year's event.

## INTERNATIONAL METALS & CABLE RECYCLING LTD

We purchase all Ferrous and Non Ferrous Metal Batteries and Cables

Collection Service Available

Long Marston Road, Long Marston, Stratford Upon Avon, Warwickshire, CV37 8AQ

01789 721 288

david@imrltd.co.uk

Open Mon/Fri - 8am - 5pm



**SAVE  
UP TO  
£15**

# 50% OFF EVERY WEEKEND

**when you spend £15**

**THE TAKEAWAYS  
YOU LOVE, IN A TAP**

\*Offer available Friday-Sunday between 9am and 11.59pm. Offer ends 11.59pm on 25th May. Min spend £15, maximum discount £15. Subject to availability. Selected restaurants only. Certain products excluded. Geographical restrictions, service and delivery fees apply. For full T&Cs see [deliveroo.co.uk/terms](https://deliveroo.co.uk/terms).

# New mayor puts his focus on community

**COMMUNITY is key to the new mayor of Leamington.**

Coun Ruggy Singh received the mayoral chain at a ceremony at Leamington Town Council's annual meeting.

Coun Sarah Boad was confirmed as deputy mayor

Coun Singh was born in Leamington and currently lives in Sydenham. He previously worked as a warehouse manager and is now a full-time carer for disabled family members.

It was through his community involvement that Coun Singh was approached by a local councillor and asked to stand as a representative for his area in the town council elections of 2021.

Although hesitant to begin with, it was pointed out that he was already

by **Philippa Mingins**

involved in his local community and he was delighted when his community elected him to serve.

Coun Singh enjoys being an active member of his community, which was particularly important to him during the Covid pandemic.

He said: "I've been involved in running various WhatsApp groups, particularly during Covid, as it helped keep the community strong with people sharing tips, advice, the occasional joke, and even cries for help at times.

"This turned out to be a way of bringing the community together, and some people have formed lasting friendships from these groups as they brought together individuals from all walks of life who may not

have otherwise got to know each other."

Coun Singh describes Leamington as a "culturally diverse and vibrant town, with a strong sense of community".

He continued: "It is my privilege to represent the town. A highlight will be meeting the various voluntary groups and the many people who give their time freely to help others.

"As a carer myself, for loved ones with disabilities, I am particularly interested in meeting others who are overcoming challenges and working together for a better future.

"I hope to offer my support to the diverse community that is Royal Leamington Spa."

Coun Singh has chosen Flourish



New Leamington mayor Coun Ruggy Singh with new deputy mayor Coun Sarah Boad.

as his mayoral charity, which helps girls aged ten to 18 with their mental health, empowering and boosting their confidence, emotional resilience, and building a stronger

sense of belonging and self-worth. Based at the Sydni Centre, it began mentoring at Campion School in 2015 and now supports 24 schools in and around Leamington.



Best foot forward for The Myton Hospices.

## Step forward to show your support for Myton

**FUNDRAISERS** are being called to lace up their walking boots and notch up the miles for The Myton Hospices.

Walk for Myton, on Sunday September 14, will start and end at Warwick Myton Hospice.

Participants can choose between three different routes – a casual three-mile

stroll, a more challenging six-mile walk or a half marathon distance of 13.1 miles.

After the walk entertainment will be laid on in the hospice grounds including performances, ice cream, a barbecue and drinks.

Walk for Myton costs £8 for adults and £4 for children and everyone who

takes part will receive a medal.

The Myton Hospices is hoping to raise £45,000 in sponsorship from the event, which could fund a Hospice Inpatient Bed for three months.

Hospice spokesperson Natalie Walker said: "We're so excited to welcome everyone to Warwick Myton

Hospice for this special event. It's a wonderful opportunity to come together, remember loved ones and make a real difference. We can't wait to spend the day with you all, walking together in support of Myton's vital work."

Visit the website at [www.mytonhospice.org/Walk](http://www.mytonhospice.org/Walk) to find out more.

Did you know that **City Bathrooms** has been installing quality kitchens for over 30 years?

Why not come and see for yourself with displays over three floors.

Bring in your measurements to our showroom or let us come out to your home at a time that suits you!

**SALE NOW ON**

- 20% off kitchen
- Free dishwasher and free appliance pack with all supplied and installed kitchens
- 50% off bespoke glass splash back



Call us today to book a design appointment on **024 7636 5877**

**£500 off** with this advert on all fully fitted kitchens

City Bathrooms & Kitchens  
 024 7636 5877 | [citybaths@gmail.com](mailto:citybaths@gmail.com)  
[www.city-bathrooms.com](http://www.city-bathrooms.com)  
 158 Longford Road, Coventry, CV6 6DR

# THE BED FACTORY

**SPECIALISTS IN BEDS AND MATTRESSES FOR PEOPLE WITH BACK, SHOULDER OR HIP PAIN.**

# SALE NOW ON

### The Harrison Handmade Beds

**KING FOR DOUBLE**  
on all complete beds from Harrison.



Complete Range of Harrison FR **Chemical Free** Beds on Show

### Special Price Ottoman

**FREE HEADBOARD**



Single £449 • Double £499  
King £599 • Super King £699

### Sutton Wooden Frame Hand Made Frame



Single £339 • Double £419  
King £469 • Super King £589

### 1 WEEK DELIVERY ON ELECTRIC BEDS

**FREE AT HOME SELECTION AVAILABLE**



**5 POINT MASSAGE MATTRESS NOW AVAILABLE TO TRY IN STORE.**

We are specialists in electric adjustable beds and have A Large Selection Available Starting From £999

### Avon Fire Side Chair



£669.00

### Special Edition 2 Drawer Bed Set

**FREE HEADBOARD**



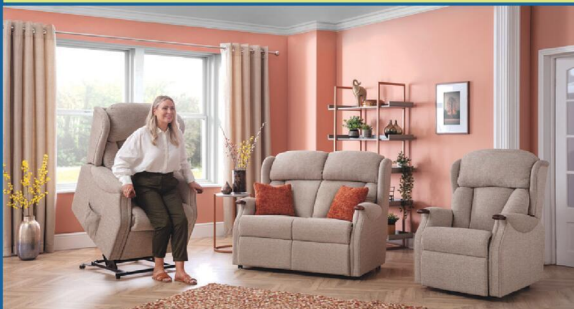
3'0 was £449 now £389  
4'6 Was £599 now £499  
5'0 was £699 now £599

### Bedroom Furniture



Full Range of Bedroom Furniture Available

## Celebrity studio in store



**Mammoth Ultimate Health Mattress**  
5'0 Pure Mattress or 2000 Limited Stocks  
Reduced from **£2139**  
TO JUST **£1599**

Helps reduce back, shoulder and hip pain

Mattresses	Support Chairs	Beds	Sofas
Riser Recliners	Electric Adjustable Beds	Corner Sofas	Headboards
Chests	Wardrobes	Pictures	Mattress Toppers
Lamps	Pillows	Duvets	Z Beds

## Leamington's Largest Independent Bed Retailer

**We can supply a large range of beds in 1 to 2 weeks - 3' Single Beds also available - WE SUPPLY WHEN OTHERS FAIL**

139 Regent Street, Royal Leamington Spa, CV32 4NX

**01926 422404**

sales@thebedfactory.co.uk  
and www.thebedfactory.co.uk

**Trustpilot** ★★★★★

# Bikefest 2025



LEFT: Road hog! RIGHT: The Extreme Bike Battle stunt show wowed onlookers.



LEFT: Let's rock! RIGHT: Charlotte Norcliffe and her children.




**PRESTIGE DENTAL CARE**  
THE GENTLE DENTAL CENTRE

## ACCEPTING NEW NHS PATIENTS EMERGENCIES THE SAME DAY

- Open till late and weekends
- Multi lingual teams (polish, romanian, arabic, mandarin)
- Male and female clinicians
- Nervous patients welcome
- 0% finance available
- Invisalign clear aligners from £2,300 per arch
- Dental implants from £1,800 per tooth
- Modern equipment and techniques

**Prestige Dental Care**  
1-5 Church Way,  
Bedworth, CV12 8NA



**NHS**  
**Invisalign**  
clear aligners  
from **£2,300**  
per arch

**Modern**  
**Equipment**  
and  
**Techniques**



**Dental**  
**implants**  
from **£2,800**  
per tooth  
inc Crown

**Telephone: 02476 314912 | 02476 319008**  
**Website: <https://gentledentalcentre.co.uk>**

# Bikefest 2025

## In the saddle for family fun and action

THE RUGBY Bikefest was another roaring success on Sunday (May 18).

Thousands flocked to the ever-popular town centre event - now in its 11th year - to check out bike displays, visit stalls, watch live music,

go on funfair rides, witness high-octane stunt shows, and unofficially welcome summertime.

As ever, the event began with the now-traditional ride-in, with hundreds of bikes entering the town centre in convoy.

Music acts Blues Extra, The Mutineers, The Soul Revival, Bright Black, The Rooters, Rugby Electric Guitar Orchestra, Big Family, Trust Club, The Jellyheads, and White Men Can't Funk entertained crowds from open-air stages in Market Place and Church Street.



The town centre was as rammed as usual for the Bikefest.



A spectacular machine.



BELOW LEFT: Revving up the crowd. BELOW RIGHT: White Men Can't Funk in action.



**OPEN 7 DAYS**  
**CV6 5EY**

**OUR BIG SALE IS STILL ON**

**INFLATION EVERYWHERE - BUT NOT AT CARPET MILL!**

Everything is going up in price, the same for Carpets and this is why it pays to go to Carpet Mill. Manufacturers of yarn and other materials for making carpets have all had price rises and some manufacturers are busy changing their specifications to many ranges to compensate. They also get surplus rolls that they cannot sell to the big stores as they don't have enough stock left to service them.

Therefore, we are buying those rolls at a **FAT DISCOUNT** and passing it on to **YOU**.



**Everything Reduced BE QUICK**

**BRAND NAME CARPETS AT LOW LOW PRICES**

**From quality Axminster to budget cord**  
We are recommended for our low prices, quality service and extensive range throughout the Midlands. There are no R.R. prices on carpets, so if others give 50% offers or sales discounts, is it 50% off their normal high prices. ALWAYS compare with Carpet Mills normal prices!!!!!!!

**CARPET MILL**

**CROMWELL STREET (OFF RED LANE) COVENTRY CV6 5EY TEL: (024) 7666 1985**

SOME CUSTOMERS TRAVEL MILES - YOU DON'T HAVE TO - WE ARE HERE

[www.salecarpet.uk](http://www.salecarpet.uk)



# PFA award for Sky Blues hero Busst

**FORMER Coventry City defender and now head of Sky Blues in the Community, David Busst, has received a prestigious award from the PFA.**

by **Aaron Sutcliffe**  
aaron.sutcliffe@bullivantmedia.com

Busst received the Professional Footballers' Association's (PFA) lifetime achievement award.

The PFA recognised Busst's work at Coventry and Sky Blues in the Community and presented him with the prize before the club's final home game of the regular season against Middlesbrough.

Busst made 60 appearances for the Sky Blues before he suffered a career-ending leg injury in a game against Manchester United in April

1996. The defender broke both the tibia and fibula in his right leg and required 26 operations which could have led to the loss of his leg.

Coventry appointed Busst as the club's community coach in 1997 before taking over the community scheme in 2003.

He has now run the club's community programme for 22 years and still makes weekly food deliveries to vulnerable residents in the city as part of his role.

Busst said: "It was an honour and a privilege to be recognised by the PFA who I've been part of since

1992, both playing professionally and working in the community.

"They've always supported me both on and off the pitch, particularly following my injury in 1996, and to receive this award from them for my community contribution and long-standing service will be held in the highest esteem."

The PFA's head of community, Dave Palmer, said: "No one is more deserving than Dave to be recognised by our PFA Memento Award."

"He represents and embodies what the PFA strived to achieve in those early days, community transition and career opportunities for our members and Dave's story is a hugely inspiring one."

"Dave has been a wonderful PFA



David Busst has run the club's community programme for the last 22 years. Picture courtesy of Coventry City FC/YouTube.

advocate and is greatly respected by his peers within the network.

"What he has accomplished during a period of over 30 years with Coventry City, firstly as a player and then with great leadership and

longevity as head of Sky Blues in the Community has been incredible and truly impactful both for the football club and the Coventry community that Dave and his team serve and support so well."



Coventry City have unveiled a new matchday activity area. Picture courtesy of Coventry City FC.

## City hit the gold standard for matchday experiences

COVENTRY City have earned a Family Excellence Gold Award for the 2024/25 season.

The EFL's family excellence scheme awards clubs with gold, silver or bronze status based on the matchday experience they provide to families.

Coventry are one of 18 clubs to receive gold status with a record number of teams achieving family excellence recognition.

Clubs receive two visits from family assessors who evaluate the matchday experience for

families. The family assessors consider the quality of matchday activations and experience, stadium accessibility and facilities, retail and refreshments, and how the club communicates with families.

Coventry received praise for their new matchday activity area along with the information and service provided to supporters.

This includes the club's family zone and Sky Blues in the Community.

The Sky Blues received a

bronze award last year and the newly-awarded gold status recognises the club's focus on improving the matchday experience for supporters.

Coventry also won an award for the club's engagement on social media. This includes the club's responsiveness to fan queries and information provided to fans building up to matchdays.

Coventry owner and executive chairman, Doug King said: "Enhancing the experience for supporters on our matchdays has

been very important to us and it is great for this to be recognised for this, with aspects like the new matchday activity area and also the focus provided by staff being vital to the assessors rating of us."

"It is important that we attract families alongside the diverse range of ages and ethnicities that come to the arena to support Coventry City, and we will use this award as a platform to continue these improvements and our engagement with fans."



### Thinking about retirement?

Get your finances in order with award-winning independent financial advice in Leamington Spa.

Book a free retirement planning consultation with one of our experts today!

☎ 0800 6342 111

✉ office@simpsonfs.co.uk

🌐 www.simpsonfs.co.uk

Follow us    

Find out more



# Refresh your kitchen with a simple but stunning makeover

★★ NOW AVAILABLE ★★

# 24 MONTHS INTEREST FREE CREDIT

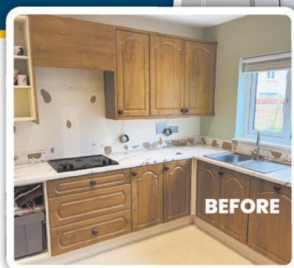
ENJOY YOUR LUXURY KITCHEN NOW - PAY LATER

**ASK FOR DETAILS**

Subject to status, terms and conditions apply.

**Joe's Doors** can transform your kitchen by replacing doors, panels and trims. Choose from a wide range of kitchen styles for a cost-effective, fuss-free service that can be completed in under two days... and best of all you don't even need to empty the cupboards!

Enjoy your stunning kitchen makeover now and pay later with our **24 months interest-free credit**. Book today for a quick, beautiful kitchen makeover.



BEFORE AFTER

- ✓ No need to empty cupboards
- ✓ No mess, no fuss
- ✓ Most fitted in a day
- ✓ Made to measure



AS SEEN ON TV • PROUDLY MADE IN THE UK • FAMILY RUN BUSINESS

## Transform your worktops with Quartzize stone overlays

Why replace your worktops when this unique quartz overlay simply fits over your existing surface. Here are some of the amazing benefits:

- **Timeless** - Looks clean and modern.
- **Hygienic** - A perfectly smooth surface.
- **Easy care** - Wipe with a neutral cleaner.
- **Durable** - Tough and scratch resistant.
- **Easily Installed** - Fitted in less than a day.



**FREE SURVEY  
FREE DESIGN  
FREE QUOTE  
FULLY FITTED  
NATIONWIDE**



## Just three simple steps to transform your existing kitchen:

- 1** We take some measurements...
- 2** You choose from our range of doors and worktops...
- 3** We'll book a date to transform your kitchen.

# JOE'S DOORS & OVERLAYS



**02476 101914 • 01926 800726 • 01788 422326**  
**joesdoors.co.uk**

Lines Open: Mon - Fri: 8.30am - 8.00pm, Sat: 8.30am - 6.00pm, Sun: 9.00am - 5.00pm. Over 30 years experience.

★★★★★★★★★★★★★★★★★★★★

**MAY BONUS**

**FREE SINK WORTH OVER £229\***

Present this voucher to our Home Consultant on the day of your Quartzize survey.

\*Unlimited period promotional voucher. T and C's apply.

# School set to stage UK riding event

**A SCHOOL near Rugby will be saddling up to host a national equestrian event this weekend.**

Princethorpe College will host the National Schools and Riding Clubs Two-Day Event from Saturday May 24 to Sunday May 25.

Organised by Stoneleigh Riding Club, the event brings together hundreds of school and riding club competitors from across the UK.

College headmaster Grove du Toit welcomed Stoneleigh Riding Club's chair of organisers Bud Jackson to finalise arrangements for this year's event and to confirm the college would take on the role of principal sponsor.

Bud said: "We are looking forward

by **Andy Morris**  
andy.morris@bullivantmedia.com

to working with the Princethorpe team. This is a key date in the equine calendar for so many school and riding clubs across the country and this year's event is already shaping up to be the best one yet."

The 'long format' event comprises dressage and show-jumping on day one, with roads and tracks, steeplechase and cross-country disciplines running on day two. It offers classes at 70cm, 80cm, 90cm and 100cm, providing opportunities for a wide range of competitors.

The 70cm event has a short-enuded roads and tracks course which excludes the steeplechase, before

moving onto the unique cross-country course designed and built by Lloyd Hunt from LandS Eventing.

Mr du Toit added: "We have been involved with this event for 21 years and are delighted to confirm our commitment to it."

"This will be the tenth year that we have hosted this event on the Princethorpe estate and we are always delighted to welcome Stoneleigh Riding Club and all the competitors, many of whom have Princethorpe connections through past pupils."

"We are especially pleased to be building again on the success of last year's 70cm class which broadened the entry, especially to schools' competitors."



Princethorpe College headmaster Grove du Toit (centre), event co-ordinator Rebecca Moreton from Princethorpe College (left), and Bud Jackson, chair of organisers at Stoneleigh Riding Club (right).

Admission to the event for spectators is free, with the event running from 8.30am to 6.30pm on both days. Visit <https://www.stoneleighridingclub.com/schedules> for more information.

# Housebuilder's donation helping community garden keep growing

GREEN-FINGERED residents in Rugby are blooming happy after receiving a donation of planting materials to help their garden grow.

Housebuilder Mulberry Homes has donated a range of planting materials – including top soil, compost, farmyard manure, bark chippings and Russian sage called Perovskia Blue Spire – to

Houlton Community Gardens Society.

The society was created for members of the community to meet, form friendships and grow flowers and fruits in a community garden at the Houlton development being delivered by Urban&Civic.

Elly Hemus, com-



munity development lead at Urban&Civic, said: "The Houlton Community Gardens is a much-loved space at the heart of our community. It continues to thrive thanks to the dedication of the Community Gardens Society and the generous support of partners like Mulberry Homes."

"This support doesn't just benefit the society; it enhances the wellbeing and shared experience of everyone in Houlton."

Sophie Leathley, senior brand and marketing manager at Mulberry Homes, said: "This group is a wonderful way for those in the community to get to know each other and develop a shared passion for gardening, and we hope our

donation is a great help.

"We're looking forward to seeing the garden continue to thrive, and to further support the Houlton community."

The donation is part of Mulberry Homes' Community Chest initiative in Houlton, in which charities and community organisations are invited to apply for a one-off donation of up to £1,000.

- Conveniently situated opposite Dovehouse Parade shops, with excellent transport links
- Manager on duty Monday to Friday
- Delightful owners lounge
- Spacious one and two bedroom apartments
- Gated car parking
- Lovely private gardens and patio
- Social calendar
- Viewing essential

# Kingsdale



## GRANGE COURT

LUXURY RETIREMENT PROPERTIES



298 Warwick Road, Solihull,  
West Midlands, B92 7GL



grange@kingsdale.co.uk



0121 706 8975



www.kingsdale.co.uk

# SPRING HAS SPRUNG GODIVA CARPETS MAY MADNESS SALE IS STILL ON

## To view the finest 'FLOOR SHOW IN TOWN'

with LUXURY at every day prices to put a SPRING in your step

Pop in to see their extensive range of Carpets,  
Wooden Flooring, Vinyls, Laminates and Rugs all at

**DISCOUNTED PRICES**

that will suit every pocket and every budget

Top Brands to order, and over 200 rolls in stock,  
that are ready to go now - Remnants from only £5

No 'APRIL' fooling around...

Our Customers love our Service, Prices, Free Planning  
and Measuring Service and you will too!



Because Godiva Carpets have been fitting carpets and flooring in homes and businesses across Coventry and Beyond for over 70 years, they have tremendous buying power, which means they can offer you

**LOW, LOW Prices, allied to GREAT, GREAT Service**

Whether you are looking to make your rooms beautiful with a touch of class, or if you are looking for something cheap and cheerful at Godiva Carpets & Flooring

*'We've got you covered'*

Top Quality Wilton Royal to Branded Room size remnants to clear and ready to go  
(No reasonable offer refused)

**Landlord deals from only £24!**



OUR NORMAL OPENING HOURS ARE  
9AM TO 5.30PM MONDAY TO SATURDAY  
(CLOSED ON SUNDAYS)

# 02476 551200

GODIVA CARPETS LTD, ARGYLE HOUSE, COLLINGWOOD ROAD,  
EARLSDON, COVENTRY CV5 6HW

VISIT OUR ONLINE STORE [WWW.GODIVACARPETS.CO.UK](http://WWW.GODIVACARPETS.CO.UK)



Brintons

CAVALIER  
FLOORING SYSTEMS

Lano  
Carpet Solutions

Penthouse  
Carpets

ABINGDON

INVICTUS  
www.ulstercarpets.com

ulster  
The original and the most popular easy-clean carpet

WILTON  
ROYAL

AND MANY MORE LEADING BRANDS

# GODIVA CARPETS

*A family business trading since 1953*

OPEN BANK HOLIDAY MONDAY 10am-4pm

**CLOSED  
SUNDAYS**

# JEWEL of SOUTHAM has officially opened its doors

Nestled in the picturesque town of Southam, just 6 miles from Leamington Spa, the JEWEL of SOUTHAM has officially opened its doors.

Step inside to discover an exquisite selection of jewellery, ranging from fashionable silver to elegant gold pieces. Owners Dean and Sue Metcalfe have meticulously curated a collection that caters to every occasion, whether you're searching for a thoughtful gift or a special treat for yourself. In addition to jewellery, the store also offers unique gift items like handbags and pens.

With over 20 years of experience in the jewellery industry, Dean and Sue



## Jewel of Southam

OPEN WEDNESDAY TO SATURDAY 9.30AM – 5.00PM.  
LATE NIGHT THURSDAYS UNTIL 7PM.

TEL: 01926 717172

WWW.JEWELOFSOUTHAM.CO.UK



previously owned a jewellers in Northamptonshire before relocating to Dorset. However, they longed for the warmth of a close-knit community, which is why they chose Southam as their new home.

JEWEL is also renowned for its jewellery repair services, with skilled professionals dedicated to restoring your cherished pieces working for us in the Jewellery Quarter in the renowned Jewellery Quarter. Dean emphasizes the joy they feel when customers see their beloved jewellery brought back to life. If you have any broken or unwanted jewellery, feel free to visit JEWEL for a quick and friendly quote in a welcoming atmosphere. We'd love to chat with you!

After two months of dedicated renovations, they are excited to invite you in for a celebratory glass of bubbly for their new opening of their business.



## Jewel of Southam BRAND NEW STORE NOW OPEN

JEWEL is a new business now open in Southam offering an array of stunning Fashion, Silver, Gold and Diamond Jewellery.

Jewellery Repairs  
Watches Serviced  
Batteries Fitted  
Gold bought for cash



11 Market Hill, Southam, CV47 0HF  
www.jewelofsoutham.co.uk | 01926 717172




Come and see our **HOUSEPLANT SELECTION**

**Garden Centre**  
Mon-Sat: 9.00am to 5.00pm  
Sunday: 10.00am to 4.00pm

**Restaurant**  
Mon-Sat: 9.30am to 3.00pm  
Sunday: 10.00am to 3.00pm  
(Hot food last orders 3.00pm)

**Drinks, Cake and Ice Cream**  
Mon-Sat: 9.30am to 3.30pm  
Sunday: 10.00am to 3.30pm

Ambleside Solihull,  
Norton Lane,  
Earlwood,  
Solihull B94 5LR  
Call 01564 702800

We are currently updating our website to give it a brand new look. You can sign up to become an Ambleside Garden Centre Member to receive

- Exclusive Discounts
- Exclusive Events
- Chance to win prizes including Trips away

[www.amblesidesolihull.co.uk](http://www.amblesidesolihull.co.uk)



**Relax in our Restaurant**



# See you in store soon!




**Did you know that we grow almost all our own bedding and summer flowering perennials ourselves?**

**We have our own nursery, just a few miles from the garden centre, so all our plants arrive looking fresh and ready to grow in your gardens!**

**Large selection of BEDDING and HANGING BASKET PLANTS – NOW IN STOCK –**

**Calor Gas Bottles NOW IN STOCK**



**GROW YOUR OWN**

We have vegetable plants in stock



**AMBLESIDE SOLIHULL Ice Cream PARLOUR**

DELICIOUS TASTE COOL & REFRESHING



Best flavour collection



Start your day with a delicious breakfast!

Monday to Saturday 9.45am - 11.30am  
Sunday 10.00am - 11.30am



**Melcourt SylvaGrow MULTI-PURPOSE 100% Peat-free**

**FlowerGro Multi-Purpose Compost**

**Bloom n' Magic**



Join us for lunch.  
Served daily from 12pm - 3.30pm

**In concert**

WARWICKSHIRE Symphony Orchestra is tuning up for an evening of orchestral masterpieces.

The concert, featuring Modest Mussorgsky's Night on a Bald Mountain, Camille Saint-Saens' Danse Macabre, and Gustav Mahler's Symphony No 5, takes place at All Saints Church in Leamington on Saturday June 14 from 7.30pm.

WSO chair Chris Voss said: "These powerful works showcase the full range and capability of our orchestra. All Saints Church provides the perfect setting for this dramatic programme that will appeal to both seasoned classical music enthusiasts and newcomers alike."

Visit [www.wso.org.uk](http://www.wso.org.uk) for tickets and further details.

**Making it up**

IMPROVESARIOS bring a little spontaneity to Leamington's Loft Theatre next week.

The improvised opera company return on Saturday May 31 following their sell-out appearance in 2024, for an evening of fun and mayhem as they put down their scores and put their creative prowess to the test.

Using audience suggestions, the group of classically trained musicians improvise a brand new opera completely on the spot.

With previous adventures including prison breaks, lost love in the hotel business and even the sacking of Rome, no scenario is too outlandish or too mundane for this group to turn into an opera.

Visit [www.loftheatrecompany.com](http://www.loftheatrecompany.com) for full details.

# Enjoyable adventures in world of literary monsters

**Theatre review**

**Mary Shelley's Frankenstein**  
Talisman Theatre, Kenilworth

MARY Shelley's marvellous creation has, and not without obvious irony, taken on a life of its own over the years.

Frequently used solely as a shorthand for raging zombies and black-eyed shadow lurkers, it's always useful to be reminded of how pioneering it was and how much depth it contains.

And we get more than just a reminder here - not least because Mary Shelley is on hand to guide us through the book's nascent, development and considerable intellectual message.

Speeding us through from Switzerland to the Arctic via forest cottages and Scottish hideaways a young cast bring the now familiar tale and its less well-known backstory to life.

In Jack Ives's hands the monster is no bolt-necked, stumbling giant. Instead we're given a character as rounded and emotion-filled as any other. It's a fine performance balancing the gentle and the explosive with excellent physicality and nothing cliched.

As the science student turned creator, Adam Turner's Dr Frankenstein blends an unstoppable drive for discovery with a

Elysia Sully provides an insight into writer's thoughts in Mary Shelley's Frankenstein at the Talisman. Picture by Robert Warner.



realisation of the consequences such discoveries can bring.

Holding the whole production together Elysia Sully as the writer herself is a revelation. Confident and assured she encounters the story's twists and turns almost as we do and the moments of grave humour and creative impatience are little gems.

The staging of this show is one of its main successes. Under Kathy Buckingham-Underhill's direction the action is swift and smooth

and there are no delays. All scene and furniture changes are handled by the company and usually performed within the action.

Simple furniture, some mobile painted flats and a series of back projections augmented by a bold use of colour in the lighting design is all we get but it's enough and its versatility means new configurations are constantly served up.

Rona Munro's script keeps pace with the events of the novel but, thanks to the clever placement of

the author in her own story, allows a strong sense of its moral stance to come through. Those who create are, we gather, responsible for their creations and abandon their obligations entirely at their peril, and our own.

The depth and scope of a novel in a very sharp, very slick stage show is an achievement in itself.

Visit [talismantheatre.co.uk](http://talismantheatre.co.uk) for performance and ticket details.

**Matthew Salisbury**

## Questions about care? We can help

We know moving into residential care is an emotional and difficult decision with lots to think about.

With over 30 years' experience, we can help you navigate the process of finding the right care home, so that you feel confident about the decision you make – whether that's choosing a WCS Care home, or one outside our group that's more suited to your needs.

If you've got questions about care, or one of our care homes, our Trusted Advisors can help.



**Philip Rainsford**



**Woodside Care Village, Warwick Castle Brook, Kenilworth**

☎ 07802 728447

✉ [p.rainsford@wcs-care.co.uk](mailto:p.rainsford@wcs-care.co.uk)



**Josephine Rugg**

**Four Ways, Leamington Spa Sycamores, Leamington Spa**

☎ 07802 728443

✉ [j.rugg@wcs-care.co.uk](mailto:j.rugg@wcs-care.co.uk)





LEFT: Richard Thompson will open proceedings on the Thursday night. MIDDLE: Le Vent Du Nord are one of the most dynamic bands in the roots music world. RIGHT: Yorkshire songstress Kate Rusby will be headlining on Saturday night.

# Legendary performers and the stars of tomorrow at festival

THE LEGENDARY Richard Thompson will be taking to the stage at this year's Warwick Folk Festival.

He will be joined by fellow headliners Le Vent du Nord, Kate Rusby and Martin Simpson at the four day celebration of roots music at Castle Park from July 24 to 27.

Thompson, who will headline on the Thursday evening, was named by 'Rolling Stone' Magazine as one of the 'Top 20 Guitarists of All Time' and is one of the most influential voices in folk and rock,

from his early days with Fairport Convention to his groundbreaking solo work.

Le Vent Du Nord, one of the most dynamic bands in the folk world, will headline the Friday night. Known for their passionate performances and electrifying blend of traditional Quebecois music.

On Saturday night, the festival will welcome Kate Rusby, one of the most beloved voices in contemporary folk music. The Yorkshire songstress has won

many fans during a career spanning 25 years.

Martin Simpson will be closing the festival on Sunday evening. Known for his storytelling and guitar skills, he has long been a major figure in the folk music scene.

His music style incorporates elements of English, Appalachian, and Celtic folk, with a touch of blues and Americana that has earned him acclaim both in the UK and internationally.

Festival director Dick Dixon

said "We've lined up unforgettable headliners, as well as a treasure trove of talent across the whole festival weekend.

"From jaw-dropping performances to unforgettable memories, Warwick Folk Festival is where the magic happens and where the best folk music meets the charm of this beautiful historic town. From stunning performances to lively workshops and jam sessions, it's going to be a weekend of pure magic. Warwick Folk Festival is renowned for being a

very friendly, relaxed, and chilled out event in a stunning location."

Visitors can enjoy a full programme of concerts, sing-arounds, dance, intimate acoustic performances and full-on gigs.

The festival village will feature everything from real ales to international cuisines and craft and clothing stalls.

And the town centre will also be alive with dance displays, music sessions and open-air concerts

Visit [www.warwickfolkfestival.co.uk](http://www.warwickfolkfestival.co.uk) for more details.

## OFTEN IMITATED BUT NEVER EQUALLED

### While all costs are going up - OURS ARE STAYING DOWN

Due to our customer friendly services of No Door Salesmen, No Showroom and little overheads



**NEW FLUSH WINDOWS**

**BEAUTIFUL COMPOSITE DOORS**  
Fully fitted  
**Competitive Prices**



## UPTO 30% OFF ALL WINDOWS



**ALL PRODUCTS HAVE A 10 YEAR INSURANCE BACKED WARRANTY**

# BILL MOORE'S WINDOWS AND DOORS

A NAME YOU CAN TRUST

1 Brookside Close, Stratford-upon-Avon, Warwickshire CV37 9PL

01789 415171 • 07729 689239 • [www.billmooreswindowsanddoors.co.uk](http://www.billmooreswindowsanddoors.co.uk)

# RCN BEDS FURNITURE

## Ottoman Beds



## Corner Sofas



Huge selection of BEDS in Stock



## Electric Beds



## Mattresses from £89



WE HAVE COVENTRY'S BEST FURNITURE AND BED SHOWROOMS. COME AND SEE US TODAY!

## Oak Furniture



## Bedroom Furniture



## Riser Recliners



## Carpets



# OPEN 6 DAYS A WEEK

Henley Road, Coventry, CV2 1AB

# 02476 603254



## Recession buster furniture deals



# New High Sheriff keen to use online thriftiness

**THE NEW High Sheriff of Warwickshire has a passion for thriftiness.**

by Philippa Mingins

Karen Lynch was inaugurated at The Old Shire Hall in Warwick and will serve as the 691st high sheriff in the county.

Born in Jarrow, Tyne and Wear, Karen moved to Warwickshire in 2003 with her husband Scott, and daughters Alicja and Georgina.

Following a stint at Barclays head office at Warwick Business Park, Karen transitioned to the world of social enterprise in 2009 when she was CEO of Belu Water until 2020. Under Karen's leadership the brand became one of the UK's best-known and most awarded social enterprises.

In addition to the core responsibilities of a high sheriff sup-

porting the pillars of the justice system, the

The Flecknoe resident will be taking a collaborative approach to the year inspired by her passion for social enterprises and community organisations, which she believes are the backbone for good in the county's communities.

"I truly believe that when we extend the hand of friendship and work together across sectors and across communities, we solve problems and realise opportunities we could not reach alone," she said.

Karen is also committed to showing that the role is one that

can be accessible to people of all backgrounds. With the role being voluntary and without expenses, Karen is keen to be thrifty.

She continued: "I can't know for sure, but I'm yet to meet or hear of another high sheriff who put together their outfit purely using Vinted and Ebay and I'll be collaborating with a lot of friends and family to support me with driving, cake-making and admin to help make the impact I want to make."

In her year as high sheriff, Karen will continue to champion The Young High Sheriff initiative and support Crimebeat Warwickshire.

She is keen to visit and acknowledge as many social enterprises and voluntary

organisations as possible in her year.

Karen's nomination to office was made by Joe Greenwell, former chair of Ford Motor Company and Jaguar Land Rover.

Joe said: "She will challenge the status quo but always with the aim of improving matters for the individuals, communities and organisations she is associated with."

"All of which to my mind qualifies her well for the duties of the high sheriff in the coming year. I know that she intends to be very visible throughout the county in the next 12 months and I am sure she will have a very positive impact within our community and on the office itself."



**Thrifty – New High Sheriff of Warwickshire Karen Lynch put together her outfit purely using Ebay and Vinted.**

## Motocross team revved up for show highlight



**Motocross stunt riders will provide thrills and spills at this year's Kenilworth Show.**

VISITORS will be head over heels for one of the high-octane attractions lined up for next weekend's Kenilworth Show.

Norfolk-based Bolddog Action Sports are sending a Freestyle Motocross Team to the agricultural show as part of the event's action-packed main ring schedule.

The riders will, however, struggle to hit the same heights as a Chinook heli-

copter that is expected to fly over and land at the site.

The main ring at this year's show, which will take place on the Stoneleigh Park estate on Saturday May 31, will feature a cavalcade of classic cars as well as modern and vintage machinery.

Birds of prey will be taking to the skies, ponies will be trotting through their paces, and there will also be a dog show and a host of

livestock parades and competitions.

Show director Charlie Weetman said: "We will obviously have a lot of events and activities that spotlight and celebrate farming life, but we also plan to have plenty for people to do that isn't necessarily related to agriculture."

Beyond the main ring, more than 120 trade stands will be set up displaying a

range of arts, crafts, jewellery, homeware, food and drink.

Bouncy castles, traditional fair stalls and other attractions will ensure kids of all ages are entertained.

Kenilworth Show is organised by the Kenilworth and District Agricultural Society (KADAS) and has been running since 1947. Visit [kenilworthshow.ticketsrv.co.uk](http://kenilworthshow.ticketsrv.co.uk) for further details.

**M MALLORY COURT**  
COUNTRY HOUSE HOTEL & SPA



*Acoustic Afternoons  
with Barton Hollow*

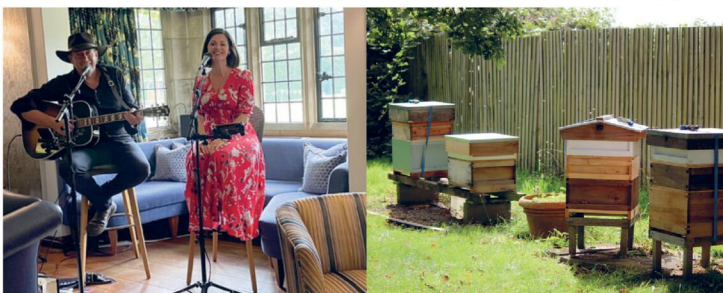
Immerse yourself in the magic of live music as these talented musicians bring warmth and harmony to the afternoon...

2:45pm - 5:00pm  
May - September (Selected Sundays)

*Bee  
Experience*

Join us for a unique bee experience with Beekeeper Lottie Buckland, with honey tasting, a visit to our hives, a honey-inspired cocktail and a two-course honey-themed lunch.

Saturday, 7th June | £75.00pp

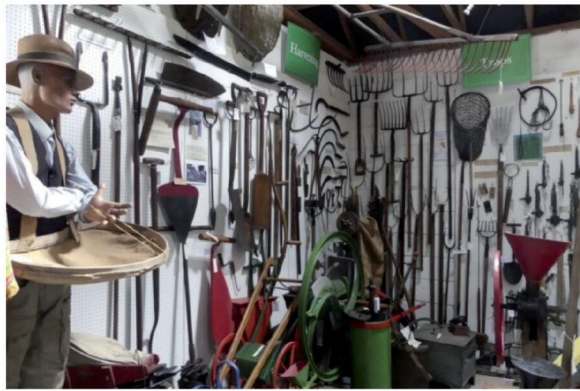


T: 01926 330214 | [INFO@MALLORY.CO.UK](mailto:INFO@MALLORY.CO.UK)  
Harbury Lane, Leamington Spa, CV33 9QB

## ARBURY HALL NUNEATON SPRING BANK HOLIDAY OPENING



**The Hall, Gardens and Stable Tearooms will be open on Sunday 25 May & Monday 26 May 2025 from 1pm until 6pm (last tour 4.30pm)**  
Dogs on leads are welcome in the gardens.  
For further details - 01676 540529  
[www.arburyestate.co.uk](http://www.arburyestate.co.uk)



Marton Museum of County Bygones features displays about farming and traditional rural skills.

## Museum open again

A MUSEUM which offers a glimpse of life in Warwickshire a century ago is reopening this weekend.

Marton Museum of County Bygones features displays about farming and traditional rural skills such as thatching, needlework, dairy, sheep-shearing and making wheels.

The museum also features timeless blacksmith's tools and domestic artefacts which are very different from those used today.

A spokesperson said: "The volunteers have been working hard over the last few weeks to get ready for visitors.

"Our village museum was started 60 years ago by George Tims - and with this refresh, we are keeping the collection alive.

"We renovated the Sowing and Harvest wall completely so that the selection of cleaned farming tools are remounted, clearly displayed and explained on new labels.

"We have a hands-on approach and there are activity trails for children.

"One visitor said they'd had a 'lovely trip down memory lane at this local gem'."

Marton Museum of County Bygones - in Louisa Ward Close, Marton - is free to visit and open every Sunday afternoon from 2-4pm from Sunday (May 25) until the end of September. Parking is available by the playing fields near the children's playground.

Visit [www.martonmuseum.co.uk](http://www.martonmuseum.co.uk) for more information.

# Manufacturing firm picks up an award

A MANUFACTURING business in Rugby has scooped a top accolade for inclusivity at an annual awards ceremony.

Lisi Aerospace, which manufactures advanced titanium components for the aerospace sector, was presented with the social value award at the British Association for Supported Employment (BASE) presentation evening after being nominated by Charlotte Smith, Team Manager of Warwickshire Supported Employment Service (WSES).

WSES customer Rhiannon, now employed at Lisi Aerospace in Butlers Leap, and HR Manager Kirstie Kennedy attended the ceremony in Manchester.

Warwickshire County Council's Lead Commissioner of Strategy and Commissioning Service Manager in Employability and Skills, Fay Winterburn, was also shortlisted for the Disability Confident Ambassador category for demonstrating leadership and advocacy, pushing for policies that go beyond mere compliance.

Kirstie has been engaging with WSES to create more inclusive job opportunities and fostering a supportive working environment by organising industry tours and holding informal sessions for people to explore job opportunities and experience the workplace firsthand.

One of Lisi Aerospace's most notable achievements is restructuring a 12-hour shift pattern into two six-hour shifts, enabling people with learning disabilities or autism to share full-time roles.

This approach has led to paid employment opportunities, with three former WSES customers now permanent staff members and two others on paid work trials.



Left to right: Charlotte Smith (WSES Team Manager at WCC), Steven Convery (Business Skills Advisor at WCC), Kirstie Kennedy (HR Manager at Lisi Aerospace), Rhiannon (HR Administrator at Lisi Aerospace) and Claire Dougan (WSES Employment Support Advisor at WCC).

they have brought so much joy to our teams."

Charlotte Smith, Team Manager of WSES, said inclusive employers don't just provide jobs - they create opportunities for everyone to thrive by unlocking the potential of each individual and building a stronger, more diverse workforce.

She added: "Every individual has unique strengths. We connect them with employers who understand the value of diversity and inclusion, creating workplaces where everyone can contribute, grow, and succeed."

"Lisi Aerospace has put their social value policy into action by amending their processes and I wanted them to be recognised for that - to encourage other employers to do the same."

"It's hugely rewarding to see the WSES customers flourish and thrive in a manufacturing environment;

# Check out our E-Editions!

**Coventry Observer** .co.uk

Upgraded route set to improve

Gain Much Needed Extra Space With Our New Offer For Your Family And Friends

**Windows Plus**

Windows | Doors | Conservatories | Fences | Paving & Soffits

02476 230222

[www.windows-plus.co.uk](http://www.windows-plus.co.uk)

**Rugby & Lutterworth Observer**

**Obs**

Izzy di her to

**DRIVES**

Are you looking for a new driveway?

0800 303259 | 07773 911552 | [www.drives4u.co.uk](http://www.drives4u.co.uk)

**Leamington Observer**

Homes to a re

**DRIVES**

Are you looking for a new driveway?

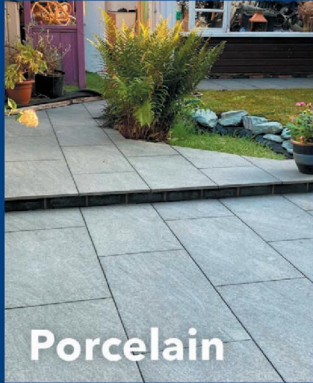
0800 303259 | 07773 911552 | [www.drives4u.co.uk](http://www.drives4u.co.uk)

[www.coventryobserver.co.uk/editions](http://www.coventryobserver.co.uk/editions)  
[www.rugbyobserver.co.uk/editions](http://www.rugbyobserver.co.uk/editions)  
[www.leamingtonobserver.co.uk/editions](http://www.leamingtonobserver.co.uk/editions)

The same paper you love on your **mobile**, **tablet** and **computer**

# Outdoors, upgraded!

Huge range of sizes and colours available



Porcelain



Sandstone



Decking

## Get a... **FREE GARDEN EGG CHAIR SET**

when you spend £2000 on landscaping products in our new brochure\*



Choose from grey or blue



**EH Smith**  
Builders Merchants

View our brochure



Find your local branch  
[ehsmith.co.uk](http://ehsmith.co.uk)

\*T&Cs apply. Valid for landscaping brochure orders of £2000 inclusive of VAT in one transaction. One free product per customer. Offer ends 31/10/25.

**BBC Gardeners' World Live & goodFOOD SHOW SUMMER**  
Sponsored by **LEXUS**

12-15 June 2025 | NEC Birmingham

**COMPETITION TIME...**  
Sponsored by **EH Smith Builders Merchants**

We have **24 PAIRS OF TICKETS TO GIVE AWAY**  
Simply answer the following question...  
If you would like to be in with a chance to win a pair!

**Nick Bailey appeared in which BBC show?**

**A** BBC Gardeners' World  
**B** The Great British Bake off  
**C** Great British Garden Retreat

Please send your answers to [competitions@bullivantmedia.com](mailto:competitions@bullivantmedia.com)

Book now | [bbcgardenersworldlive.com](http://bbcgardenersworldlive.com) | [goodfoodshow.com](http://goodfoodshow.com)

\*Competition closing date will be Sat 31st May 2025. Valid on general admission tickets only, excluding Saturday entry. Details correct at time of print. Transaction fee applies. The Gardeners' World logo is a trademark of the BBC. © BBC. The Good Food trade mark is used under licence from Immediate Media Company London Limited. Organised by Immediate Live (trading name of River Street Events Ltd).

# Landmark move to bring buses under public control gets go-ahead

by Sarah Mason  
sarah.mason@bullivantmedia.com

**PLANS to revolutionise the region's buses to bring the network under public control for the first time in 40 years have been given the green light.**

The landmark decision was signed by the West Midlands Mayor, Richard Parker, after the West Midlands Combined Authority (WMCA) Board meeting.

The transition process towards franchised bus services – replacing the current private operator-led network – is now set to get under way.

The first public controlled services, which are likely to include a non-stop Sprint service from Walsall to Solihull via Birmingham city centre, are expected to start rolling out in late 2027, with the whole process finished during 2029.

The Mayor said: "For too long, our buses have been run for private profits, not public good. Today, that changes.

"The public have been clear - they want a better bus service under public control, and I've heard them loud and clear. I promised to take back control of our buses and this decision shows we're delivering on that promise.

"The work is now under way, and over the next two years we'll create a bus network that puts passengers



Richard Parker, Mayor of the West Midlands (centre) with Anne Shaw executive director of TfWM and Pete Bond, TfWM director of integrated transport services.

first – reliable, affordable and run in the interests of the people that use them."

With 236million journeys last year, buses account for eight in ten public transport trips. A well-used and low emission network is seen as a crucial part of the region's plans to cut traffic congestion and improve air quality and the environment.

Under franchising, Transport for West Midlands (TfWM), which is part of the WMCA, will set the fares, timetables and routes of bus services and award a series of contracts to private bus operators to run

them. This means that the politically accountable Mayor and regional leaders, through TfWM, will be able to design a network which best serves residents and businesses.

There are expected to be nine local area franchises with three rolled out each year from 2027-2029, plus a number of smaller single route contracts to encourage smaller bus operators to bid.

Antony Goozee, bus strategy and commercial director at National Express West Midlands, said: "As a leading bus operator in the West Midlands, we take great pride in

running bus services in the region, carrying more than 4.5 million passengers every week.

"We recognise the ambitions of the Mayor and the West Midlands Combined Authority to significantly invest in the bus network and develop a new operating model that maximises value for public investment, enhances mobility, and supports economic growth across the region. Our long-standing and successful partnership with Transport for West Midlands is something we greatly value. Drawing on decades of experience, we remain fully committed

to working collaboratively to deliver high-quality bus services, supporting a smooth and effective transition to the new franchising model as well as continuing to improve our service excellence well into the future."

An extensive consultation earlier this year found 75 per cent of residents and organisations who expressed a preference were in support of franchising. This included a majority of bus operators and local councils.

The one-off costs of setting up the new franchised operation and designing the new network is expected to be £22.5 million over three years.

Bus depots – the WMCA already owns one in Walsall – and a fleet of more than 1,000 buses will also be needed, either bought outright or leased using either the authority's transport grants or borrowing through fare income. This will increase competition by opening up the new franchises to a wider range of operators.

The WMCA say the private operator-led bus network has struggled with rising costs in recent years and is currently being propped up with £50million a year of taxpayers' money to prevent more services from being cut.

Last year an independent audit found that through increased competition among operators franchising would offer better value for money – whatever the level of public funding.

**WOW! EVENTS**

# ABBAOKE!

**THE SING-ALONG ABBA EXPERIENCE!**

**VOULEZ-VOUS**

**SAT 31 MAY**

**DOORS 7PM**

**hmv Empire, Coventry**

**BOOK NOW AT [hmvempire.com](http://hmvempire.com)**

**hmv**

**EMPIRE**

COVENTRY

Scan & Book

Promoter reserves the right to alter the programme. This is a tribute show and is no way affiliated with any original artists/estates/management companies or similar shows.

[woweventsuk](https://www.facebook.com/woweventsuk)
[woweventsuk](https://twitter.com/woweventsuk)



**HOLLOWAYS**  
AUCTIONEERS  
EST. 1972



# Leamington Silver & Jewellery Valuation Day

## Wednesday 28th May

### 12pm to 2pm

Valuations of Silver, Jewellery, Watches, Gold, Antiques and General Collectables.

**Items may be left to be consigned into Auction**

**The Leopard,  
10 Oakley Wood Road, Bishop's Tachbrook,  
Leamington, CV33 9RN**

**Donations in aid of WCS Care**



**Free Home Visits | Estate Clearances & Downsizing**

If you have a lot of items you want valuing, we offer a **FREE** home visit service where we can come to your home. Contact us for more info

**T: Hansons Warwickshire 07470 459309**

**E: [clivejones@hansonsauctioneers.co.uk](mailto:clivejones@hansonsauctioneers.co.uk)**

**[www.hansonsauctioneers.co.uk](http://www.hansonsauctioneers.co.uk)**



**Hansons Holloway's, Banbury, Oxfordshire, OX16 5NB**

# Top ten hit for hospital radio station

**COVENTRY Hospital Radio has been ranked among the top ten in the country at a national awards ceremony.**

by **Andy Morris**  
andy.morris@bullivantmedia.com

At the Hospital Broadcasting Association 2025 Awards, the station – which serves University Hospital Coventry – finished in the top ten of the categories in which it was shortlisted, including Station Of The Year.

It was also in the top ten in the categories for Best Specialist Music Programme for Lee Baker's CHR Country show, Best Special Event for the FA Cup Semi-final Special,

Best Programme with Multiple Presenters for Moz Baker and Clive Brookes, and Best Female Presenter for Laura Dunn.

The station's PR Officer Simon Tidmarsh said: "We are delighted with the results of the Hospital Broadcasting Association 2025 Awards – from specialist shows through to capturing the spirit of the city on the amazing FA Cup journey last season with the Sky Blues.

"We are also delighted that our



Making airwaves – left to right, Clive Brookes, Simon Tidmarsh, Laura Dunn, Ellis Ainslie-Huffer, Jules Hughes-Rowlands and Moz Baker at the Hospital Broadcasting Association 2025 Awards.

listeners are listening to a radio station that is in the top ten out of all the hospital radios in the UK.

"This year was tougher than ever due to a higher number of radio stations entering in each category.

"I would also like to add a big

thank you to all our volunteers who give up their free time every week to keep the radio station going by presenting on the radio or being on the wards collecting requests. I know those daily tasks are what keeps us going as a radio station."

Coventry Hospital Radio broadcasts for free, 24 hours a day, seven days a week on bedside units at University Hospital Coventry and online at [www.coventryhospitalradio.org](http://www.coventryhospitalradio.org), on the Coventry Hospital Radio App, and on smart speakers.



West Midlands PCC Simon Foster said 'every knife surrendered was a life saved'. s

## Every knife dumped could be a life saved – PCC

A TOTAL of 95 knives have been surrendered at a weapons bin in Coventry in the space of three months.

Figures released by West Midlands Police and Crime Commissioner (PCC) Simon Foster show which knife bins have had the most blades and weapons deposited in them from January to March this year.

The bin at Coventry

Central Police Station had the third highest number of weapons surrendered in it. The highest number was surrendered at Erdington in Birmingham, where 415 were deposited.

In total, across the region, 1,705 weapons were surrendered in bins – prompting Mr Foster to double the number of containers from 32 to 64 as part of his campaign to

combat knife crime.

The knives surrendered will now be destroyed.

The PCC's figures equate to 142 weapon deposits a week, or more than 20 per day. The recent haul included hundreds of flick knives, zombie knives, kitchen knives, knuckle dusters, machetes and even firearms.

The metal containers provide a safe location for the

public to dispose of knives and weapons and Mr Foster said every knife, blade or weapon deposited in one of the bins was potentially a life saved.

Around 8,000 deadly weapons have now been destroyed since the PCC surrender scheme began.

To apply for a new knife surrender bin email [wmpcc@westmidlands.police.uk](mailto:wmpcc@westmidlands.police.uk).

**VERTICAL**      **ROLLER**      **VENETIAN**

**ROMAN**      **SHUTTER**      **INTU**

**10 YEARS WARRANTY ON SHUTTER BLINDS**

Available in beautiful and stylish Hard Wood and Faux Wood

**WE WILL BEAT ANY LIKE-FOR-LIKE QUOTE**

Visit us at: 21 Brixham Drive, Coventry, CV2 3LA

Email: [info@brixham-blinds.co.uk](mailto:info@brixham-blinds.co.uk)

Contact us today for a **FREE** no-obligation quotation

**T: 02476 666686** [brixham-blinds.co.uk](http://brixham-blinds.co.uk)

# BRIXHAM BLINDS Residential and Commercial

Brixham blinds are a well-established blinds company offering to trade and consumer. With a great range of quality bespoke and made to measure blinds by an established blind company you can trust.

Whether you're thinking of vertical blinds, roller blinds, venetian blinds or roman blinds, shutter blinds, all of our blinds come with child safety regulations and fittings to make sure your home is safe.

# Just for Pets



Just for Pets, Leamington Shopping Park, Tachbrook Park Dr, Leamington Spa CV34 6RH  
(next to M&S)

Just for Pets, Arena Shopping Park, Rowley's Green, Coventry CV6 6AS (next to M&S)

Just for Pets, Horeston Grange Shopping Centre, Nuneaton CV11 6GU (next to Farmfoods)

[www.justforpets.co.uk](http://www.justforpets.co.uk)

# Driver training rule change is move to bring in younger staff

WEST Midlands Railway has welcomed the government's decision to reduce the starting age for people to undertake driver training from 20 to 18.

And last week, the government announced 18 to 20-year-olds could benefit from thousands of jobs and apprenticeships which will become available on the railways across the country as early as December.

As part of the 'Plan for Change', it is hoped getting young people into roles will bolster the workforce and improve rail services by preventing delays and cancellations and boosting the economy at the same time.

Young people will be able to take up new careers as train drivers three years earlier to boost the number of drivers needed for reliable services and put more school and college leavers on track to step straight into work.

The decision to lower the age will reduce the over reliance on rest day working by getting more people into the driving seat and ensuring a steady stream of drivers entering the industry.

### Driver shortage

The current average age for a train driver

is 48 years old and rising - 30 per cent are due to reach retirement age by 2029.

Bringing young talent into these skilled roles is aimed at bridging this gap, preventing any future shortages and ensuring consistent, reliable services for passengers.

Of the current driver list, less than nine per cent are women and less than 12 per cent are represented by ethnic minorities.

Another aim of this latest move is to open professional opportunities to a much wider group of people.

Richard Morrow, head of drivers for West Midlands Railway, said: "We're pleased with the decision to allow those between the ages of 18 and 20 to apply for driver roles.

"By unlocking these opportunities for school leavers, young people can step straight from education into a career or apprenticeship, offering them a skilled, life-long career.

"At West Midlands Railway, we are continuously recruiting for new drivers, with 26 new starters since the start of the year.

"We hope that this change will inspire a wide range of people to join the industry, and we look forward to welcoming them into the fold, helping us to deliver a more diverse, future-proofed railway."



West Midlands Railway has welcomed the lowering of the age for people to start driver training from 20 to 18. Picture by Tristan Harris. Bullivant Media Group Ltd.

### Bold action

Transport Secretary Heidi Alexander said: "We're taking bold action to improve train services and unlock thousands of jobs.

"We're future-proofing our railways against delays and cancellations caused by a shortage of drivers, ensuring that we can provide reliable, passenger focused train journeys under Great British Railways for decades to come."

Mick Whelan, general secretary of ASLEF, the train drivers' union, said it had campaigned for many years to lower the age drivers could start training.

"This decision - to allow people to leave school, or college, and join the railway in the driving grade at 18 rather than wait until they're 20 - will increase diversity in the driver's cab by encouraging more BAME people, more LGBT+ people, and more women - as well as more young people - to drive trains on

### Britain's railways.

"Because, at the moment, young people who want to become train drivers leave school or college at 18, get other jobs, and we miss out as an industry as they don't wait around until they turn 20 to find a career."

Several other countries have already successfully and safely adopted a lower age limit, including the Netherlands, France, Germany and Switzerland. Other nations, including Japan, are currently considering a change in law.

Transport for London also successfully opened up its train driver apprenticeships to 18-year-olds to drive trains on the underground network in 2007.

Everyone who takes on a train driver role must undergo rigorous training to ensure they are competent, qualified and fit to do so, ensuring the safe use of our railways for everyone.



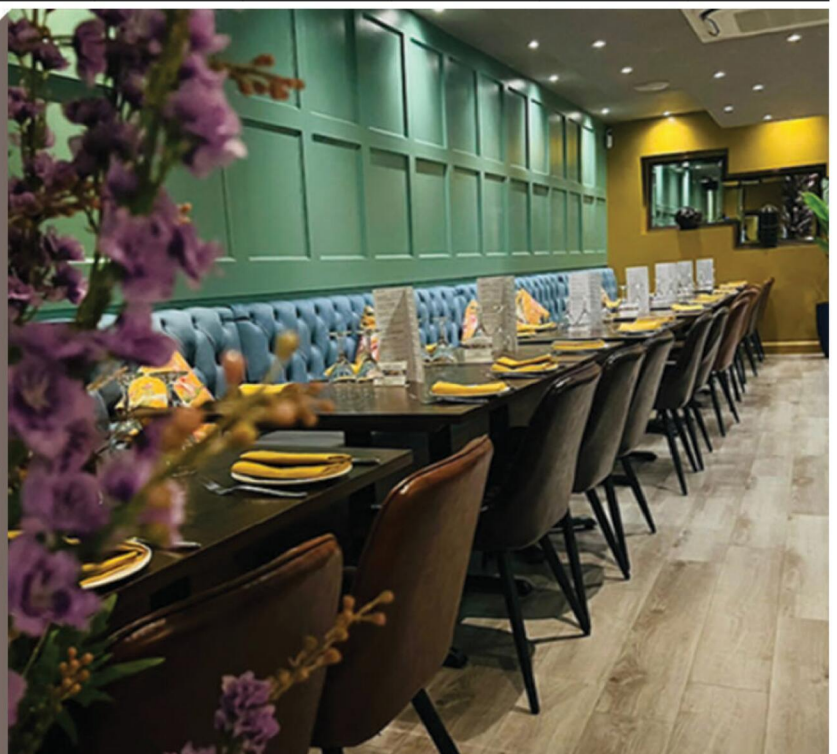
**TAMARIND**  
EAT. DRINK. RELAX

---

EAT · DRINK · RELAX  
**EVERY MONDAY & TUESDAY**  
BOOKING RECOMMENDED



ANY **STARTER** · ANY **MAIN DISH\***  
ANY **NAAN OR RICE** · & **COFFEE OR TEA**  
**£14.90** pp  
\*FISH & KING PRAWNS £3.00 EXTRA PER DISH \*\*PLAIN COFFEE



376 Kenilworth Road, Balsall Common, Coventry, CV7 7ER • Tel: 01676 533 308 • Email: admin@cafetamarinds.co.uk

# www.cafetamarinds.co.uk

OPEN 7 DAYS A WEEK: Sunday - Thursday: 5:00pm - 11:00pm Friday & Saturday: 5:00pm - 11:30pm



# Russell Lane

## The Jewellers of Warwick

### ARE HOLDING A

# FREE VALUATION EVENT

# FOR THE MONTH OF MAY

Russell Lane Jewellers have been established for over 50 years with expert knowledge of jewellery; antique and modern.

With the jewellery prices rising and the current uncertainties in the financial world, the value of jewellery has increased dramatically, and a significant percentage of jewellery is potentially undervalued, meaning it could threaten your ability to replace cherished items. Have your precious items that you wish to find more information on regarding age or value or simply unsure on what things are.

Russell Lanes are running a **FREE** verbal appraisal event during **THE MONTH OF MAY**

Come along for your **FREE** appraisal where you can satisfy your peace of mind.



# JEWELLERY

# VALUATION

# EVENT

Tel: 01926 494 494 | Email: [sales@russell-lane.co.uk](mailto:sales@russell-lane.co.uk)  
2 High Street, Warwick CV34 4AP

**THE OLDEST JEWELLERS IN WARWICK**  
Website: [www.russell-lane.co.uk](http://www.russell-lane.co.uk)

# Help protect our liquid assets with these ideas

AS THE hot May weather continues, Severn Trent has shared seven water-saving tips for households to help people save on their water usage and bills.

Last year, Water Saving Week received support from 4.7million people and this year Severn Trent is taking part by encouraging people to become real-life water-saving heroes by getting involved in daily challenges.

These range from making the most out of a laundry load to trimming a minute from shower times.

With the Met Office announcing the country has had the driest March in 60 years, the sunniest April on record, followed by more extremely warm and dry weather in May, there is of course less water in rivers and reservoirs - and so people are being encouraged to be water-wise.

Howard Perry, Severn Trent's network operations lead, said: "There are simple things you can do to be mindful of the water you use, like putting a jug of water in the fridge

so you're not waiting for the tap to run cold, switching the hose for a watering can and quickly fixing any leaks or broken taps.

"Not only are these wins for the environment, but they help save money too.

"As water is a precious resource, we're encouraging people to be mindful of water use, especially as the drier and warmer weather continues."

So, to make sure you manage your water carefully, and for a positive bounce in your finances this summer, follow some of the tips below.

**Turn off taps when not in use -**

Running taps uses over six litres of water every minute. Turning them off while teeth brushing can save over 12 litres of water. Similarly, when washing the dishes, fill the bowl with water, rather than having a running tap will help to save water.

**Collect rainwater -** Water butts



are a great way to store rainwater in the garden for use on plants and grass. The average roof collects enough rainwater to fill a water butt 450 times-a-year, allowing people to ditch the hose and save hundreds of litres of water.

**Fix leaks promptly -** People tend

to put off getting leaks fixed, yet even small ones can waste significant amounts of water. So regularly check taps, showerheads and toilets for leaks and repair them as soon as possible. For more information on leak-detecting, visit the Severn Trent website.

**Use water-efficient fixtures -**

Everyone loves a power shower but they use a lot more water than a normal one, so consider installing water-saving devices such as low-flow showerheads or dual-flush toilets which do the same job while using less water.

**Try a shower timer -** Showers are

one of the largest users of water in a household. And while people might love singing through their suds out of their hair, a shower timer might just keep people on track to spend less time in there. Not only will that help lower water bills, it could also cut energy bills too.

**Run full loads -** Dishwashers are

becoming much more energy and water efficient and, if used correctly, by only using them when it is full, can be more efficient than washing dishes by hand. Similarly, only using a washing machine on a full load will mean less cycles and less water used.

**Get a water meter -** Once

installed, most customers make a conscious effort to use less water, once they switch to a water meter. The meters mean people will only ever pay for what they use, putting people in charge of your bills.

People can visit: [stwater.co.uk](http://stwater.co.uk) to see if they are eligible to apply and for more water-saving tips.

# THE JONES FAMILY JEWELLERS

CASH YOUR GOLD & SILVER TODAY! PRICES ARE THE HIGHEST THEY HAVE EVER BEEN! GET A QUOTE TODAY!



LEAMINGTON SPA

01926 882552 - 3 Satchwell Walk, CV32 4QE

KENILWORTH

01926 954271 - 16 Talisman Square, CV8 1JB



# Hatton Garden Centre & Shopping Village

**Inspired by the Chelsea Flower Show?  
Step into Royal-Approved Gardening at Hatton!**



As the Chelsea Flower Show blooms into life, there's no better time to let your green fingers flourish. If the stunning displays have sparked your gardening creativity, why not continue the inspiration with a visit to Hatton Garden Centre and Shopping Village?

Here, you'll find everything you need to give your outdoor space the stamp of royal approval – from exquisite plants and stylish pots to expert advice and seasonal inspiration. It's your own slice of Chelsea, closer to home.

## While You're Here... Explore Our Charming Shopping Village

Make a day of it and wander through our delightful shopping village – brimming with unique charm, independent boutiques, and hidden treasures. Whether you're looking for the perfect gift, a treat for yourself, or simply want to soak up the friendly atmosphere, there's something special waiting around every corner.



## Great Eateries Too!

Breakfast, Lunch and Teas served at the Gardeners Retreat: burgers, beers and ice cream from The Hatch, both at Hatton Country World.

And just down the road, Hatton Estate's iconic pub, the Hatton Arms, overlooking the longest flight of locks on the Grand Union Canal.



## Much More Than Just a Garden Centre!

Hatton Country World, Hatton, CV35 8XA  
Hattonworld.com

# Businesses must be vigilant as threat of cyber attacks mounts

THREE major retailers in the UK have been victims to cyber attacks in recent weeks. Harrods, the Co-op and M&S have been forced to restrict or partially shut down business operations as a result.

A cyber attack can cause significant issues for businesses, with M&S already experiencing a lower share price and the loss of millions as a result of the disruption.

Consequently, many business owners will be wondering how to identify the potential signs of hackers and avoid being severely impacted.

Business and tech experts QR Code Generator PRO SL - qrly.com - have compiled four major signs to help spot hackers and deal with them before they have the chance to cause damage to businesses.

Unusual account activity - Strange login activity could be a sign of hackers. Receiving emails or notifications of failed login attempts could be a sign of someone trying to access a system. Repeated failed attempts and unusual login locations are telltale signs, especially if no employee has a login issue. Similarly, if employees are unable to log into their accounts, this could be a sign hackers have gained control and have locked users out.

To prevent this, ensure all

employees have strong passwords on their accounts. These should include a combination of capital and lowercase letters, numbers, and special characters. The more random and longer the combination, the more difficult it will be for hackers. Also make sure multi-factor authentication (MFA) is turned on for all users. This provides another barrier for hackers to overcome when they are trying to gain access.

Anyone who believes a hacker has successfully gained access to a business should log out all users and reset passwords. Identifying a hacking attempt early will prevent further damage.

Malware and ransomware indicators - These include unexpected file changes, unauthorised software installations, suspicious outgoing communications or ransomware messages. These can suggest malware infections or active cyber attacks generated by hackers.

To combat this issue, ensure the business' data is regularly backed up. This will prevent large quantities of data from being lost in the event of an attack. Implement File Integrity Monitoring (FIM) to track file activity, verify authenticity and

threats to go unnoticed. Always investigate these promptly and seek professional response services if necessary.

Sluggish system performance and network irregularities - If a system is suddenly performing poorly or is slow to navigate, this could be a sign something is wrong. Malware can cause this issue, as well as Distributed Denial of Service (DDoS) attacks, which flood the system with traffic, making it unusable to employees. Unexpected network activity, such as peaks in traffic outside of business hours, can also be a cyber attack red flag.

To tackle this, consider implementing managed cybersecurity services and regular penetration testing to identify potential vulnerabilities in a system.

Deploy intrusion detection systems and firewalls, checking they are up-to-date periodically to prevent a system being put at risk.

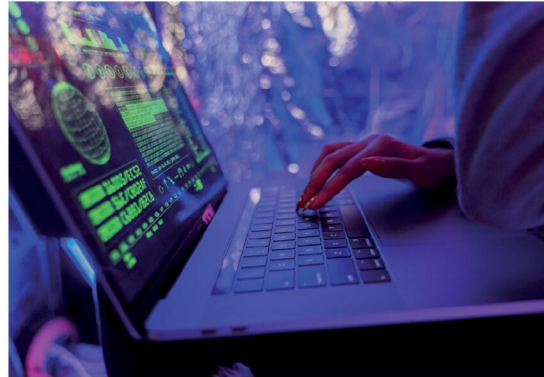
Phishing attempts - A surge in phishing or spam emails targeting employees could mean that hackers are probing defences in an attempt to gain access. They may appear legitimate or trustworthy and will ask for a link to be clicked. This often downloads a virus or tricks recipients into sharing sensitive or personal information or data.

This problem can be largely avoided by providing proper phishing awareness for employees. Employees should be as informed as possible and know how to identify illegitimate emails. Implementing strong email filtering will also prevent phishing attempts from reaching employees, placing them in the spam folder.

Marc Porcar, CEO of QR Code Generator PRO S.L, said: "Being aware of these four warning signs and responding accordingly should help dispel hackers in most cases."

"Business owners and employees should remain vigilant and alert of potential cyber threats at all times, and all cyber protection software should remain updated."

He added it was concerning to witness huge companies, such as M&S and Co-op, experience significant cyber attacks but, he said, there are ways for businesses to protect themselves and minimise the risk.



## It's time to Like, Follow & Subscribe

Don't be LEFT BEHIND.....

## BREAKING NEWS WHAT'S ON SPORT INTERVIEWS

 CoventryObserver

 LeamingtonObserver

 RugbyObserver

 @CovObserverNews

 @LeamObs

 @RugbyObserver

 CovObserver

 Leamington.Observer

 Rugby.Observer

# Coventry Memory Singers

*New singing group helps connect people living with dementia and their carers*

**A** new Memory Singers group in Coventry is helping people living with dementia connect with loved ones and enjoy the therapeutic, social and cognitive benefits of music.

Coventry Memory Singers takes place at Bond's Hospital, Coventry, and is open to anyone with dementia or other neurological condition, and their carers, with



remaining sessions this term on 12 & 19 June, 3 & 17 July.

Run by the renowned choir and music charity Armonico Consort, based in Warwick, this is the third Memory Singers group to be established, with others in Solihull and Warwick.

Armonico's specially-trained professional musicians lead a fun and friendly session that includes warm-ups, activity songs and a wide variety of familiar tunes, with live musical accompaniment. There's also a chance to socialise over refreshments.

Significant scientific research and inspirational TV documentaries such as Line of Duty actress Vicky McClure's 'Our Dementia Choir', have highlighted the positive effects of music as 'medicine'. These extend to unlocking memories, re-establishing cognitive pathways, improving confidence and positively affecting mood. Sarah Riddell, Operations Manager, Armonico Consort, said: "Singing for people living with dementia is such a joyous and liberating experience, and a much-needed chance for loved ones to connect. Participants at our existing Memory Singers tell us it's the highlight of their week, and we're delighted to have launched our third



group at Bond's Hospital, Coventry."

As well as being keen to hear from potential participants, Armonico are also on the lookout for volunteers to lend a hand during the sessions. Coventry Memory Singers takes place at Bond's Hospital, Hill Road, Coventry CV1 4AX. Remaining sessions this term are on 12 & 19 June, 3 & 17 July. Details about joining or volunteering from Sarah Riddell [sriddell@armonico.org.uk](mailto:sriddell@armonico.org.uk) or visit [www.armonico.org.uk/communities](http://www.armonico.org.uk/communities)

## MEMORY SINGERS

*Singing sessions for people living with dementia and their carers*

## ARMONICO CONSORT



### SOLIHULL

Thursdays Bi-weekly 1-2.30pm  
The Onward Club, 107 Helmswood Drive, Chelmsley Wood, B37 7NS

£5\* per session (\*Suggested donation per session or whatever you can afford, carers go free)  
Supported by the Solihull Fairer Futures Fund

Upcoming Sessions:

12th June, 19th June, 3rd July and 17th July

### COVENTRY

Thursdays | Bi-weekly | 10.30 -12pm  
Bond's Hospital, Hill Street, Coventry, CV1 4AX

£5\* per session (\*Suggested donation per session or whatever you can afford, carers go free)

Supported by THE GENERAL CHARITIES OF THE CITY OF COVENTRY, The Cecil Pilkington Charitable Trust, Kathleen Beryl Sleigh Charitable Trust and THE BATCHWORTH TRUST

Upcoming Sessions:

12th June, 19th June, 3rd July and 17th July

## SUPPORT OUR MEMORY SINGERS: VOLUNTEER WITH ARMONICO!

Come and join our friendly and supportive team of volunteers who help make this joyful programme happen.

To book a place or for further information about sessions or volunteering please contact Sarah Riddell: Email [sriddell@armonico.org.uk](mailto:sriddell@armonico.org.uk) or call **07722 632242**

[www.armonico.org.uk](http://www.armonico.org.uk)

Registered charity no. 1103159

# Classified

TELEPHONE 01527 588688 FACSIMILE 01527 584371

## PUBLIC NOTICES

### PUBLIC NOTICES

**Warwickshire County Council**

**ROAD TRAFFIC REGULATION ACT 1984**  
Warwickshire County Council has made the following Temporary Traffic Orders:

**BECKFOOT CLOSE, BROWNSOVER, RUGBY**  
Order Effect: Road closed to vehicular traffic.  
Reason for Order: To enable work for laying duct.  
Order Commences: 27 May 2025 for up to 18 months.  
Anticipated Completion: 28 May 2025.  
Access & Diversion: No diversion available.  
Contractor: M J Quinn, Tel: 01543 547 118.

**LINDALE, BROWNSOVER, RUGBY**  
Order Effect: Road closed to vehicular traffic.  
Reason for Order: To enable duct laying works.  
Order Commences: 28 May 2025 for up to 18 months.  
Anticipated Completion: 29 May 2025.  
Access & Diversion: No diversion route available.  
Contractor: M J Quinn, Tel: 01543 547 118.

Warwickshire County Council proposes to make the following Temporary Traffic Orders:

**BANK STREET, RUGBY**  
Order Effect: Road closed to vehicular traffic.  
Reason for Order: To enable pipe works.  
Order Commences: 9 June 2025 for up to 18 months.  
Anticipated Completion: 11 June 2025.  
Access & Diversion: Albert Street, Church Street, Regent Street  
Contractor: Chevron TM Ltd, Tel: 03300 080 820.

**D3241 LOWER HILLMORTON ROAD & C30 THE KENT, RUGBY**  
Order Effect: Road Closed to vehicular from Kingsley Avenue to Featherbed Lane.  
Reason for Order: Footway reconstruction and associated works. Work will be progressed in phases weekdays only 09.30hrs-15.30hrs.  
Order Commences: 12 June 2025 for up to 18 months.  
Anticipated Completion: 5 August 2025.  
Access & Diversion: The Kent, School Street, Deerings Road, A428 (Ashlawn Road, Hillmorton Road), B5414 Whitehall Road, Lower Hillmorton Road and vice versa. Access/egress to/from adjoining roads will be restricted whilst works are in progress.  
Contractor: Balfour Beatty, Tel: 03452 415 302.

**MONKS KIRBY LANE, MONKS KIRBY**  
Order Effect: Road closed to vehicular traffic.  
Reason for Order: To safely enable works for replacement of a pole.  
Order Commences: 10 June 2025 for up to 18 months.  
Anticipated Completion: 10 June 2025.  
Access & Diversion: Monks Kirby Lane, Coal Pit Lane, Brockhurst Lane, Sandy Lane and vice versa.  
Contractor: M J Quinn, Tel: 01515 478 800.

**FOSSE WAY, PRINCETHORPE**  
Order Effect: Road closed to vehicular traffic.  
Reason for Order: Works to lay ducting in carriageway.  
Order Commences: 10 June 2025 for up to 18 months.  
Anticipated Completion: 16 June 2025.  
Access & Diversion: Fosse Way, London Road, A45, Leamington Road, Oxford Road and vice versa.  
Contractor: Callan Connect, Tel: 01213 275 167.

**SANDFORD WAY, DUNCHURCH, RUGBY**  
Order Effect: Road closed to vehicular traffic at the turning point/entrance to private drive.  
Reason for Order: To enable duct laying works, 08.00hrs-17.00hrs.  
Order Commences: 11 June 2025 for up to 18 months.  
Anticipated Completion: 11 June 2025.  
Access & Diversion: Vehicular travel along Sandford Way will not be affected.  
Contractor: M J Quinn, Tel: 01543 547 118.

For all of the above temporary orders, pedestrian access to and egress from properties and land situated adjacent to the length of road to be closed will be maintained at all times. Vehicular access will be maintained where possible.

To report any problems with these works or for further details of our current & planned roadworks visit our website [warwickshire.gov.uk/roadworksmap](http://warwickshire.gov.uk/roadworksmap) or call us 01926 412515.

S Duxbury, Director of Strategy, Planning & Governance, Shire Hall, Warwick CV34 4RL Date 23 May 2025

### PUBLIC NOTICES

**Warwickshire County Council**

**ROAD TRAFFIC REGULATION ACT 1984**  
Warwickshire County Council proposes to make the following Temporary Traffic Orders:

**OLD HOUSE LANE, CORLEY**  
Order Effect: Road closed to vehicular traffic.  
Reason for Order: Works to lay ducting in carriageway and verge.  
Order Commences: 11 June 2025 for up to 18 months.  
Anticipated Completion: 17 June 2025.  
Access & Diversion: Tamworth Road, Church Lane and vice versa.  
Contractor: Callan Connect, Tel: 01213 275 167.

For all of the above temporary orders, pedestrian access to and egress from properties and land situated adjacent to the length of road to be closed will be maintained at all times. Vehicular access will be maintained where possible.

To report any problems with these works or for further details of our current & planned roadworks visit our website [warwickshire.gov.uk/roadworksmap](http://warwickshire.gov.uk/roadworksmap) or call us 01926 412515.

S Duxbury, Director of Strategy, Planning & Governance, Shire Hall, Warwick CV34 4RL Date 23 May 2025

### PUBLIC NOTICES

**Rugby Borough Council**  
Town and Country Planning Act 1990 (as amended)

**Application Number R24/0714**  
3-9, BANK STREET, RUGBY, CV21 2QB  
Replace existing first floor timber windows which are beyond repair with 'Like for Like' white woodgrain uPVC double glazed windows. This development may affect a Conservation Area

**Application Number R25/0307**  
96, GROVE ROAD, ANSTY, COVENTRY, CV7 9JE  
Second storey rear extension with dormers and garage conversion.  
This development may affect a Public Right of Way

**Application Number R25/0408**  
MILFORD HOUSE LONG ITCHINGTON ROAD, RUGBY CV23 8EG  
Single Storey Extension, Alterations, Repairs and Maintenance  
This development may affect a Listed Building

**Application Number R25/0409**  
MILFORD HOUSE, LONG ITCHINGTON ROAD, BIRDINGBURY, RUGBY, CV23 8EG  
Listed Building Consent for a Single Storey Extension, Alterations, Repairs and Maintenance  
This development may affect a Listed Building

Members of the public may inspect copies of the application, the plans and documents submitted with it online at:  
[www.planningportal.rugby.gov.uk](http://www.planningportal.rugby.gov.uk) or in an electronic form at: Town Hall, Evreux Way, Rugby CV21 2RR between the hours of 9.00 am and 5.00 pm Monday to Friday until 13 June 2025. Please note a planning officer would not be present.

If you wish to make an appointment to discuss the application, please contact the case officer. Any person who wishes to make representation to the above mentioned Council about the applications should make them online - [www.planningportal.rugby.gov.uk](http://www.planningportal.rugby.gov.uk) (search for application number and select comment) - or in writing by that date to The Chief Officer Growth and Investment, Town Hall, Rugby, CV21 2RR.

If an application is determined by the Planning Committee, members of the public may have the opportunity to speak at the meeting. More details about public speaking are available from the Council or on-line at: [www.rugby.gov.uk/speakingatplanning](http://www.rugby.gov.uk/speakingatplanning)

For householder or minor commercial applications, in the event of an appeal against a refusal of planning permission, dealt with on the basis of representations in writing, any representations made will be sent to the Secretary of State, and there will be no further opportunity to comment at the appeal stage.

Nicola Smith  
Chief Officer - Growth and Investment  
MRPTI

### PUBLIC NOTICES

**Warwickshire County Council**

**ROAD TRAFFIC REGULATION ACT 1984**  
Warwickshire County Council has made the following Temporary Traffic Orders:

**D60620 FARM STREET, HARBURY**  
Order Effect: Road closed to vehicular traffic from Mill Street to Sutcliffe Drive.  
Reason for Order: Drainage works, 08.00hrs -17.00hrs.  
Order Commences: 27 May 2025 for up to 18 months.  
Anticipated Completion: 30 May 2025.  
Access & Diversion: Farm Street, Temple End, Park Lane, Chapel Street, Mill Street and vice versa.  
Contractor: Balfour Beatty, Tel: 03452 415 302.

Warwickshire County Council proposes to make the following Temporary Traffic Orders:

**STOCKTON ROAD, LONG ITCHINGTON**  
Order Effect: Road closed to vehicular traffic.  
Reason for Order: To safely enable works to reset air valve lid.  
Order Commences: 9 June 2025 for up to 18 months.  
Anticipated Completion: 10 June 2025.  
Access & Diversion: Stockton Road, Southam Road, Coventry Road, The Green and vice versa.  
Contractor: Chevron Traffic Management Ltd, Tel: 03300 080 820.

For all of the above temporary orders, pedestrian access to and egress from properties and land situated adjacent to the length of road to be closed will be maintained at all times. Vehicular access will be maintained where possible.

To report any problems with these works or for further details of our current & planned roadworks visit our website [warwickshire.gov.uk/roadworksmap](http://warwickshire.gov.uk/roadworksmap) or call us 01926 412515.

S Duxbury, Director of Strategy, Planning & Governance, Shire Hall, Warwick CV34 4RL Date 23 May 2025

### PUBLIC NOTICES

**TREVOR LLOYD COCKER**  
(Deceased)  
Pursuant to the Trustee Act 1925 any persons having a claim against or an interest in the Estate of the above named, late of 1 Woodway Avenue Hampton Magna Warwick, CV35 6SB, who died on 20/01/2023, are required to send written particulars thereof to the undersigned on or before 24/07/2025, after which date the Estate will be distributed having regard only to the claims and interests of which they have had notice.

**Foster Harrington**, Brook House High Street Bracknell Berkshire, RG12 1LL

**EILEEN MARGARET ROSE BADGER**  
(Deceased)  
Pursuant to the Trustee Act 1925 any persons having a claim against or an interest in the Estate of the above named, late of 2 Bridge Street Hampton Lucy Warwick, CV35 8BA, who died on 30/03/2025, are required to send written particulars thereof to the undersigned on or before 24/07/2025, after which date the Estate will be distributed having regard only to the claims and interests of which they have had notice.

**Pennans Solicitors LLP**, The Princt Wellbourne Warwick CV35 5NL

### PUBLIC NOTICES

**NOTICE OF APPLICATION FOR A NEW PREMISES LICENCE UNDER THE LICENSING ACT 2003**

Name of applicant: **Tredon Management Ltd**  
Notice is hereby given that **The Jacobean Hotel** has applied to Coventry City Council for a variation of premises licence for **The Jacobean Hotel, Holyhead Road, Coventry, CV5 8HX**  
The applicant proposes to carry out the following licensable activities: **To provide the sale/supply of Alcohol, Live Music and Recorded Entertainment. For onsales Monday to Sunday 1100 - 0000**  
Any person wishing to lodge a representation concerning this application may write to: Licensing Authority, The Council House, Earl Street Coventry CV1 5RR  
Or send an email to: [licensing@coventry.gov.uk](mailto:licensing@coventry.gov.uk)  
The application may be viewed during normal office hours at the above address and further information may be available at [www.coventry.gov.uk](http://www.coventry.gov.uk) on the public register.  
Any Representation relating to this application must be made in writing to the Licensing Authority by **16th June 2025**  
Please note it is an offence to knowingly or recklessly to make a false statement in connection with an application. The maximum fine on summary conviction for this offence is Unlimited

### PUBLIC NOTICES

**I, Rajani Mekala**, wife of Rajesh Kumar Chenna, aged 37 years, residing at: 10 Poitiers Road, Chelyesmore, Coventry, West Midlands, CV3 5JX.  
Hereby declare that I have changed my surname from **Mekala to Chenna** and shall hereafter be known as **Rajani Chenna** for all purposes.

**GERALD ALLEN PHILLIPS**  
(Deceased)  
Pursuant to the Trustee Act 1925 any persons having a claim against or an interest in the Estate of the above named, late of 11 Highwaysmans Croft, Coventry CV4 7EA who died on 16/03/2025, are required to send written particulars thereof to the undersigned on or before 24/07/2025, after which date the Estate will be distributed having regard only to the claims and interests of which they have had notice.

**Angels Solicitors LLP**, 117-119 New Union Street, Coventry, CV1 2NY

**GOODS VEHICLE OPERATOR'S LICENCE**  
Top Del Ltd of 23 Uppington Street Northampton NN1 2PG, is applying for a licence to use 1 Olean Road Longford Coventry CV6 6HH as an operating centre for 1 goods vehicle and 1 trailer.  
Owners or occupiers of land (including buildings) near the operating centre(s) who believe that their use or enjoyment of that land would be affected, should make written representations to the office of the Traffic Commissioner, Quarry House, Quarry Hill, Leeds, LS2 7UE stating their reasons, within 21 days of this notice. Representatives must at the same time send a copy of their representations to the applicant at the address given at the top of this notice. A Guide to Making Representations is available at <https://www.gov.uk/government/publications/a-guide-to-making-representations-objections-and-complaints-goods-vehicle-operator-licensing>.

## PUBLIC NOTICES

Keeping you up to date with all the latest information on

**Planning Proposals, Traffic Notices, Goods Vehicle Operator Licences, Licences To Sell Alcohol, Probate Notices....**

## SALES & WANTS

### MISCELLANEOUS

**R E C L I N E R**  
CHAIR Electric rise & recline £169  
Manual recline chair £60 High seated chair £40 Can deliver 07703 925662

**BEDS** NEW  
£95 Singles £59 King size £159. Second hand doubles £49  
Singles £29 Fridges £49 Freezers £59 Can deliver 07703 925662

**BREAD** tv series 1 & 2 (watched once) and 3 & 4 (brand new) £20 the lot 07813 706 158

**CUTE** children's Ducklings 4 piece garden set with yellow handles; spade, fork, rake, shovel £10 07813 706 158

**GORGEOUS** New Look dress, size 14; pink, purple, green flowery pattern. New with tag £10 07813 706 158

**GET** professional PHR colour 2.4GHz wireless CCTV system. Brand new in box £25 07813 706 158

**SET** of 14 LH Golf Clubs. Bag & Accessories Good Condition Taylor Made, Galloway, King Cobra. £180 ono 07819015716

**SMALL TV** Wooden Corner Unit As New £50 ono 07879015716

**M A H O G A N Y**  
Sideboard 3 drawers, 3 cupboards 940H x 1270L x 480D Good Condition £100 ono 07879015716

**GOOD** Condition £150 ono 07879015716

**SAMSUNG** Surround Sound Speaker Set (6 in total) - £60 ono 07879015716

**E L E C T R I C**  
lawnmower VGC £35 0121 605 7853

**ONE** Tyre Continental 195/55 R 16 H £5, 110 45 Vinyl Records £25, 30 L P Records £25 01789 507415

**PING** Karsten 1970's 1, 3, 5 woods VGC Offers 07751 972736

**GOLF** trolley Electric with charger Excellent condition Includes bag £45 ono 07751 972736

**BOYS** mountain bike good all round condition £15 ono 07541576100

**DOG** Cage folds down new £10 ono 07541576100

**MODEL** Railway baseboard frame & ply & cork 5ft x 3ft free to collector 01905 345537

**COFFEE** Machine 'Nescafe Dilce Gusto' with coffee pods £30 07743929558

**E L E C T R I C**  
confidence fitness treadmill £40 01527 546431

**L / H** Golf Putter brand new name Ozulif club £7 01527 546431

**HALFORDS** car cover only used for one day, £20 (cost £60) 01527 526098

**HOSTESS** Tray (table top) perfect condition hardly used with 3 glass dishes and keep warm shelf £35 (cost £75) 01527 526098

**MOTO** Caddy Electric Golf Trolley. Very Good Condition £150. Tel: 07884 434566

**RUNNER** BEAN, £1.75 a tray of 12 plants 01905 778926

**HEAVY** duty pipe bendr 15mm x 22mm £5 ono. Tel 07528485727

**TYRES** 3x 175 / 65x14 good condition 5mm tread on Clio 2 rims £15 each 0794046691

### WANTED

**\*\*WANTED: Vinyl Records CDs Cassettes**  
Vintage or New !!  
Seeking classic rock, jazz, indie and rare finds. Cash paid  
Call or text: 07765 142354 Or 01527 893992  
Or email: [welston@live.com](mailto:welston@live.com)  
Paul (Albatross & Doomed Records)

### WANTED

**WANTED**  
Motorcycles and Scooters  
Any cc, condition or age, good prices paid  
07944 781 933 | 01926 257 643

# Classified

TELEPHONE 01527 588688 FACSIMILE 01527 584371

## SOMETHING TO SELL?

Advertise them in  
**The Observer**  
or **The Standard**

Simply fill in the coupon below, tick the appropriate box, enclose your cheque or credit card details if required, and we'll do the rest - Or alternatively email your free ad to: [freeads@bullivantmedia.com](mailto:freeads@bullivantmedia.com)

Free Lineage (Items upto value £500)  Paid for Boxed Ad (Items of any value)

Details of Item For Sale for Publication (No Pets or Livestock or Firearms please):  
(MAX 15 WORDS)

..... Tel: .....

Details (Not for Publication):  
Mr/Mrs/Ms ..... Initials ..... Surname .....

Address .....

..... Postcode .....

Tel: ..... Mobile .....

Email: .....

I enclose cheque, payable to Bullivant Media Group Ltd, value £.....  
or alternatively

Please debit my card for £..... Visa/Mastercard/Maestro/Delta

Credit Card Number .....

Exp: ..... Start: .....

Sec No: (Last 3 digits) ..... Issue No: (if applicable) .....

Send to Bullivant Media Group Ltd, Webb House, Church Green East,  
Redditch, Worcestershire. B98 8BP or email your advertisement to  
[freeads@bullivantmedia.com](mailto:freeads@bullivantmedia.com)

**Raise some extra cash and make someone else's day by selling your unwanted items**

If your item is valued at £500 or less - its **FREE OF CHARGE** in lineage (max 15 words)  
But if you want your advertisement to really stand out or if your item is valued at over £500, you can place details in a boxed advertisement for just

**£5.75 (inc Vat)**

**3 PIECE SUITE**  
brown leather, perfect condition as new  
**£550**  
can deliver  
**Telephone 10234 567890**

(£5.75 incVat example boxed advertisement)

### SERVICES

#### CONSERVATORIES & GLAZING

#### DOUBLE GLAZING REPAIRS

Locks, Hinges, Handles, Glass, Windows or Doors  
New Doors/Windows  
Also Supplied/Fitted  
**07973 200 623**

#### GARDENING SERVICES

**STUART'S GARDENING SERVICES**  
Landscaping & Tree Surgery  
Fencing, Slabbing, Turfing, Block Paving, Bases, Mowing, Decking, Roofing and Guttering.  
Mini-digger/Dumper  
Fully Insured. Registered carrier of waste.  
**FREE ESTIMATES**  
**02476 305992 • 07813 790889**  
**01788 211064**  
[www.stuarts-gardening-services.yolasite.com](http://www.stuarts-gardening-services.yolasite.com)

#### HOME IMPROVEMENTS

#### HANDY MAN

If you're looking for a fast and reliable service  
Then call Lenny  
• Plastering • Plumbing • Fencing  
• Gardening • Flooring • Kitchens  
• Bathrooms • Carpentry • Flat pack furniture  
• Tiling • Painting  
**02476 443 996**  
**07794 784 266**  
**NO VAT CHARGE**

#### BEST LEAVE IT TO THE EXPERTS



Check out our **Classified pages!**

#### KITCHENS

#### S.W INSTALLATIONS

**Kitchens & Bathrooms**  
**FREE DESIGN & QUOTATION**  
**QUALITY KITCHENS & BATHROOMS SUPPLIED & FITTED**  
**PLUMBING, CARPENTRY, TILING, WORKTOP & DOOR REPLACEMENT**  
(Supply & fit, supply only or fit only)  
**LOCAL TRADESMAN**  
**20YRS EXPERIENCE**  
**NO JOB TOO SMALL**  
**01926 773386 or 07971 684 353**

### RECRUITMENT

## WE'RE HIRING: MULTI MEDIA ADVERTISING SALES ACCOUNT MANAGERS

(OFFICE BASED AND / OR FIELD BASED)

### Observer Standard

NEWSPAPERS | MAGAZINES | DIGITAL



We are looking to expand our Sales team across Warwickshire, Worcestershire and the West Midlands.

The ideal candidate will have a proven track record of success in Sales Account Management; and a strong understanding of the local media landscape - print and digital would be useful, but its not essential.

*In this role, the successful candidates will be responsible for:*

- Developing and maintaining current relationships with existing clients
- Identifying and making contact with new clients
- Identifying and closing new business opportunities

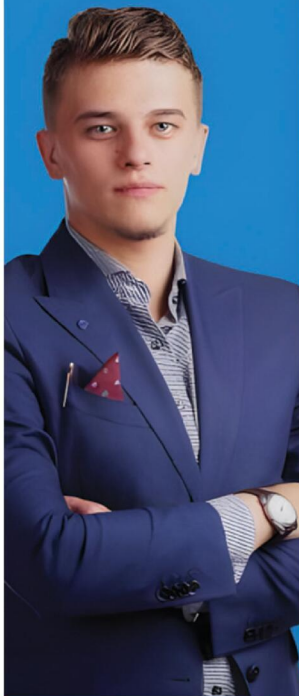
*Skills required:*

- A professional and friendly manner
- Excellent communication skills with ability to communicate on all levels
- Experience of sourcing and generating sales leads, over the telephone and face to face
- Ability to work independently and as part of a team
- Attention to detail

In return we offer a basic salary and on target earning in excess of £40k per annum, as well as a car allowance for Field Sales Account Managers

**If you are interested in learning more about this really interesting role, please send your cv to: [pat.bullivant@bullivantmedia.com](mailto:pat.bullivant@bullivantmedia.com)**

*Bullivant Media Group publishes local Newspapers, Magazines and Websites across Warwickshire, Worcestershire and the West Midlands.*



**CRS LTD**  
 Spring Lane South, Malvern WR14 1AT  
 ATF's are the **ONLY** legal way to scrap your vehicles  
**BUYERS**  
 of all SCRAP Metals and SCRAP Vehicles  
 The **ONLY** authorised treatment facility in Malvern!  
 Best Prices Paid • Collection & Skip Drops Farm  
 Equipment, Copper, Brass etc. • 50 Ton Weigh Bridge  
**ID REQUIRED - 01684 578081**  
 www.crs-malvern.co.uk

# Observer SPORT



9 772040 128006  
 Published by Bullivant Media Group Ltd, Webb House,  
 Church Green East, Redditch, Worcestershire, B98 8BP  
 Printed by Newsquest, Newspaper House, Osney  
 Mead, Oxford, Oxfordshire, OX2 0EJ

**VINYL RECORDS WANTED**  
 Buying since 1978  
 Get your cash TODAY!  
 I will come to you  
**Phone PAUL**  
**01527 893992 | 07765 142354**

www.rugbyobserver.co.uk BRINGING YOU ALL THE LATEST SPORTS NEWS AND VIEWS FROM THE AREA

## Joshua to lead Valley revival at Step Five

by Aaron Sutcliffe  
 aaron.sutcliffe@bullivantmedia.com

**FOOTBALL:** NEW Rugby Town boss Grant Joshua remains in a bullish mood despite confirmation Valley would not receive a reprieve from relegation to Step Five.

The provisional league allocations released by the FA see Town returning to the United Counties League Premier Division South for the 2025/26 campaign.

However, newly-appointed Valley boss Joshua insists he and his coaching staff are already on full systems go preparing for the new season.

Joshua said: "The work's well underway on getting a new squad together."

"We've always said regardless of where we end up in the pyramid that it



Grant Joshua has replaced Ian King in the Butlin Road dugout. Picture by Martin Pulley.

wouldn't affect the plan at all, as we're building a team strong enough to challenge at Step Four even if we ultimately have to start a level below that next season.

"We've got loads of meetings with current and prospective players before the end of May, and I'm confident that we can field an exciting line-up for the fans and

bring success back to the club again.

"Hopefully it will be chalk and cheese from what the supporters saw last season, and we can put together something for them to be really impressed by and proud to come and watch.

"With no disrespect to where I have been previously, the potential here at Rugby is immense and we firmly believe that there's a genuine opportunity to go through the leagues over the coming few years."

Joshua guided former club Coleshill Town to the Walsall Senior Cup final this season which they went on to win against Darlaston Town.

The 37-year-old previously guided Lye Town to Step Four in 2023 and helped Coleshill to a ninth-place finish at the same level last season.

His regular backroom staff of Chris Rabone and Ross Harris have joined him at Butlin Road.

## Borough assigned to NPL Midlands

RUGBY Borough have discovered which league they will play in next season after the FA released the National League System (NLS) club allocations for steps two to six.

Borough will play in the Northern Premier League Midlands in 2025/26 after winning promotion from the United Counties League Premier Division South via the play-offs.

Rugby beat Aylestone Park in the play-off final to seal a historic promotion to Step Four.

Borough can look forward to derby matches against the likes of Bedworth United, Coventry Sphinx and Racing Club Warwick.

A total of four teams achieved promotion into the division - Bourne

Town, Lichfield City, Rugby and St Neots Town.

And two teams have dropped into the division from the step above - Basford United and Mickleover.

Another couple of sides have moved across Step Four laterally as Belper Town and Carlton Town join the NPL Midlands.

The other teams Borough will come up against next season are: AFC Rushden and Diamonds, Anstey Nomads, Boldmere St Michaels, Coleshill Town, Corby Town, Hinckley LR, Long Eaton United, Loughborough Students, Shepshed Dynamo, Sutton Coldfield Town and Wellingborough Town.

The league comprises 22 teams.

**CASHBROKERS**  
LEAMINGTON SPA

PAWNBROKING LOANS  
 SCRAP GOLD & SILVER  
 BUY BACK  
 JEWELLERY & WATCHES  
 COINS & BULLION

**01926 258252**  
 144 Parade, Leamington Spa, CV32 4AG  
 www.cashbrokersleamingtonspa.co.uk

**CASH PAID**  
**FOR GOLD, SILVER,  
 COINS & BULLION**



Switzerland



The National Association of Jewellers

Is getting in a  the only thing the family will agree on? Does a late Saturday night call for a big Sunday  ? Setting the mood with a date night burger &  (because who needs fancy when you've found the perfect match)? In too much of a hurry to cook up that Friday night  ? Or maybe it's a post-footie  you're looking to score? Whatever's on the table this weekend, you can count on us to deliver.

**THE TAKEAWAYS  
YOU LOVE, IN A TAP**



\*Offer available Friday-Sunday between 9am and 11.59pm. Offer ends 11.59pm on 25th May. Min spend £15, maximum discount £15. Subject to availability. Selected restaurants only. Certain products excluded. Geographical restrictions, service and delivery fees apply. For full T&Cs see [deliveroo.co.uk/terms](https://deliveroo.co.uk/terms).



## **POST-FOOTIE FEAST**



## **SLICE OF THE PARTY**



## **SUNDAY RECOVERY**



## **TAKEAWAYS YOU LOVE, IN A TAP**

\*Subject to availability, geographical restrictions, service times, service fees and delivery fees apply.