

WANTED
Motorcycles and Scooters
Any cc, condition or age,
good prices paid
07944 781 933 | 01926 257 643

Family lead tributes to much-loved dad lost in reservoir

by **Andy Morris**
andy.morris@bullivantmedia.com

A HEARTFELT tribute has been paid by the wife of a much-loved father who died after falling into Draycote Water.

The wife of Christopher Packer, 54, said he 'brought happiness to everyone he met'.

Christopher was reported missing on Thursday afternoon (May 29) after he and his teenage son fell into the water when their boat capsized.

His son was rescued by two fishermen and was uninjured.

Following an extensive police search operation, Chris's body was discovered on Friday evening (May 30).

Chris's wife said: "Although I cannot believe you are not with us anymore, I know that you were doing what you loved the most - fishing and being with our beautiful son.

"You lived your life in such a good way and brought happiness, joy, and laughter to all you met; you will for-

ever be missed by everyone.

"You departed this world far too early and left behind your family and friends who miss you more than words can say. You will live in our hearts forever and can now rest in peace."

She thanked everyone involved for their efforts and support 'at the worst moment I have ever had to face'.

Precious

"Firstly, the amazing fishermen who were there that day and able to rescue my son. Words cannot ever be enough and 'thank you' doesn't even come close. Please know that your actions on that day saved a most precious young life.

"To Warwickshire Police, Fire, Ambulance, Search and Rescue teams, who worked incredibly hard in difficult conditions and provided the support, compassion and determination to complete the search operation. Your professional and reassuring manner brought comfort at the darkest of times.

"I also appreciate the impact this will have had on the local community and businesses affected, and want to say thank you for respecting our privacy and allowing the emergency services to perform their work as efficiently as possible."

Ch Insp Angus Eagles, the Local Area Commander for Rugby, thanked the public for their patience and understanding while officers worked to find Christopher.

He said: "I don't underestimate the impact this tragic incident, and the large-scale search operation, will have had on local people and businesses.

"Special thanks also goes to Warwickshire Fire and Rescue, Warwickshire Search and Rescue, West Mercia Search and Rescue, Avon Fire and Rescue Service, West Mercia Police, and Severn Trent - all of whom have played an integral role in supporting our extensive search efforts."

Christopher Packer 'brought happiness to everyone he met'.



Tel: 0800 3032559
Mob: 07773 911552
www.drives4u.co.uk

Are you looking to improve or enlarge your driveway or patio?

We can provide you with a beautiful new patio or driveway in Coventry, Bromsgrove, Redditch, Solihull, Leamington, Kidderminster and Birmingham

5 Year guarantee

- We've designed and built just about every shape and size of driveway and patio you can imagine, so we will not be phased by your project.
- We strive to achieve 100% satisfaction and unlike other driveway companies, with us you pay absolutely nothing upfront.
- Give us a call and you could save upto £1000



Tel: 0800 3032559 | Mob: 07773 911552 | www.drives4u.co.uk

Jon's wildlife legacy will keep growing

THE "DAVID Attenborough" of Warwick district has downed tools for the final time.

by **Philippa Mingins**

After 50 years dedicated service to local parks and gardens, Warwick District Council's (WDC) green spaces development officer Jon Holmes has retired.

Starting as an apprentice at the council's tree nursery, Jon quickly became a passionate advocate for wildlife and conservation, becoming the driving force behind numerous projects including rain gardens, sensory and butterfly gardens, bug hotels, and introducing hundreds of bird boxes.

He also worked on woodland and meadow creation and helped

shift WDC's planting schemes to more sustainable, wildlife-friendly approaches.

Jon has been instrumental in the designation of local nature reserves and wildlife sites, ensuring they meet the necessary standards and are properly managed for wildlife. He's also worked closely with Warwickshire Wildlife Trust and other partners to protect these sites long-term.

A key contributor to the council's Biodiversity Action Programme, Jon's efforts have significantly shaped local nature conservation. He has worked alongside community groups, schools, and other part-

ners to connect people with nature and provide more opportunities for residents to enjoy green spaces.

Simon Richardson, who has worked alongside Jon in WDC's green spaces team for 22 years, said: "Jon has devoted his life to improving the district for the benefit of the public and wildlife. He cares passionately that any work is done correctly and for the right reasons."

"His passion has always been improvements for nature and biodiversity, and he was instigating schemes long before other authorities had even thought about them. In some respects, he is our David Attenborough, and he will be leaving a legacy for many years to come."

WDC's neighbourhood spokes-



Jon receiving his Freedom of the District award from WDC chairman Coun Naveen Tangri.

person Coun Will Roberts added: "Jon's passion for protecting wildlife and promoting sustainability has inspired all of us. His work has left a lasting impact, and we will continue to build on the legacy he's helped create."

"I would like to thank Jon for his dedication and commitment over the past 50 years, and wish him a happy

and well-earned retirement."

In addition to the many Green Flag awards that Jon has been instrumental in achieving over the years, he was recently acknowledged with two personal awards – an Outstanding Achievement Award from the Heart of England, and the recently-awarded Freedom of the District status from WDC.



School's design set to wow Gardeners World visitors

BUDDING gardeners from a Leamington school are set to inspire visitors to BBC Gardeners' World Live with their very own garden of remembrance.

Trinity Catholic School's history research group is

taking part in the major gardening show to be held at NEC Birmingham next week.

Their 'Bud and Blossom Reflection Garden' is a tribute designed by the school's history research group to

commemorate 80 years since the liberation of Auschwitz and the end of the Second World War. This space aims to bring together students, staff, and the wider community through a shared experience rooted in faith,

remembrance, and healing.

The garden's symmetrical layout, defined by pebble pathways, symbolises unity and reflection, while a tranquil central pool invites quiet contemplation.

Triangular planting beds

pay homage to both the Holy Trinity and the theme of unity.

At the centre stands a Silver Birch Memorial Tree, where visitors are encouraged to hang the names of loved ones.

M MALLORY COURT
COUNTRY HOUSE HOTEL & SPA

Acoustic Afternoons with Barton Hollow

Immerse yourself in the magic of live music as these talented musicians bring warmth and harmony to the afternoon...

2:45pm - 5:00pm
May - September (Selected Sundays)

Bee Experience

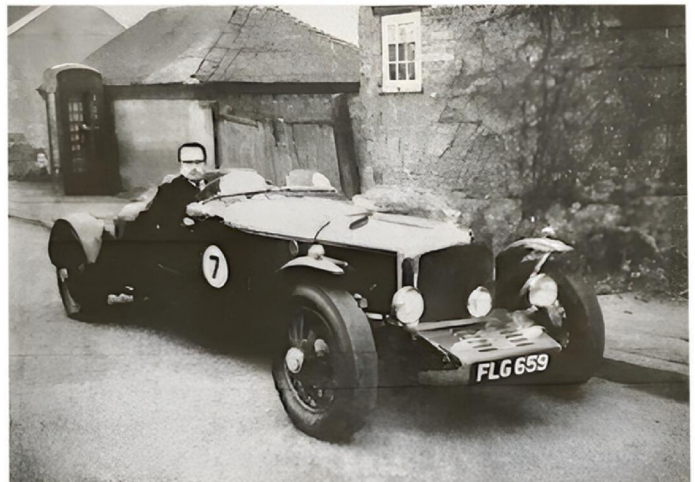
Join us for a unique bee experience with Beekeeper Lottie Buckland, with honey tasting, a visit to our hives, a honey-inspired cocktail and a two-course honey-themed lunch.

Saturday, 7th June | £75.00pp



T: 01926 330214 | INFO@MALLORY.CO.UK
Harbury Lane, Leamington Spa, CV33 9QB

CAN ANYONE HELP?



I am trying to find out where this photo of me was taken about 55/56 years ago in 1968/69. It would probably be within a 5 to 8 mile radius of Bulkington, Warwickshire. I thought the red telephone box and the buildings in the background would help to trace the location by jogging someone's memory.

Many thanks Indeed.

PLEASE CONTACT LEON GIBBS ON 07702 447998

PUBLIC NOTICES For all your latest information on Planning Proposals, Traffic Notices, Goods Vehicle Operator Licences, Licences To Sell Alcohol and Probate Notices...

Golden times for rower Lauren



Lauren Henry with her gold medal from the 2025 European Rowing Championships. Picture by Benedict Tufnell/British Rowing.



Lauren crosses the finish line in Plovdiv. Picture by Benedict Tufnell/British Rowing.

THE GOLD standard - Rugby-born Olympic rower Lauren Henry has struck gold once more in the women's single sculls at the European Rowing Championships.

Henry dominated the event from start to finish and claimed gold in a time of seven minutes and 17.8 seconds in Plovdiv, Bulgaria.

The Team GB athlete previously won Olympic gold in the quadruple sculls at the Paris 2024 games last summer.

And after making the switch to the single sculls event, the 23-year-old wants to become the most successful British sculler ever.

She said: "I've done three championships in the single, one at juniors

and one at under-23s, and both times I made the A final but came fourth twice.

"So to make the podium and get a gold medal is really, really special. "I wanted to come here and make a mark and make a name for myself, and I feel like I've done that."

"I want to be world champion, I want to be Olympic champion, I want to break the world best time, I want to be the most successful British single sculler ever."

"That's my aim. I've still got many years to go but watch this space."

Henry set a new British record on the opening day of the championships with a time of seven minutes and 9.76 seconds in the heats.

Lauren, who lives in Lutterworth, also set a new European best time in

a stunning start to the event.

She then comfortably won her semi-final in a time of seven minutes and 12.1 seconds to qualify fastest for the final.

She finished more than three seconds ahead of Ireland who took silver, while Denmark claimed bronze.

She is now a two-time European gold medalist after previously topping the quadruple sculls podium in Szeged, Hungary last year.

Lauren took up rowing at the age of 13 at Leicester Rowing Club. At 22, she became the youngest rower on Team GB in Paris.

She was presented with Rugby's Freedom of the Borough in March, and was given the same honour by Harborough District Council in May.

Offering support over gambling problems

HELP with gambling problems will be on offer at Rugby's Library next week.

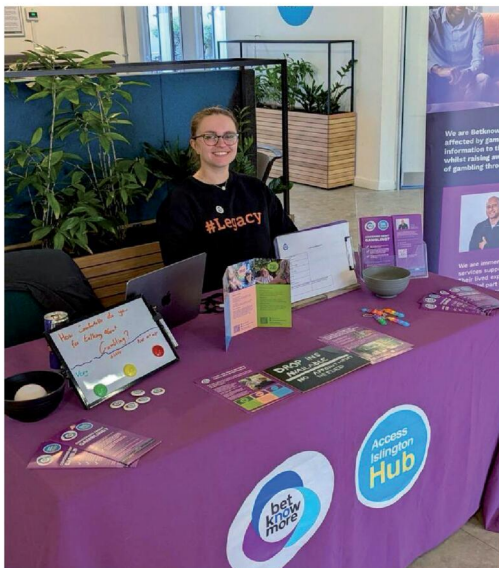
The charity Betknowmore UK will hold two community events at the Little Elborow Street venue to help people facing financial hardship, relationship breakdowns, poor mental and physical health, or involvement in crime due to gambling.

Coun Claire Edwards, Rugby Borough Council's spokesperson for Communities and Homes, Regulation and Safety, said: "For too many people, gambling can become an addiction that can break up families and ruin lives."

"These two engagement days are an opportunity for anyone to come along and see what help is available. It's never too late to get support."

Her Liberal Democrat counterpart Coun Noreen New added: "It has become very easy for people to let gambling become a habit that is hard to break. It usually starts small but then gets out of control. These community events will give people a chance to stop gambling ruining their lives."

Betknowmore works to address and prevent gambling harms using the knowledge of people who have experienced them, as well as evidence-led health and therapeutic



approaches.

The charity will be at Rugby Library from 9am to 1pm on Tuesday (June 10) and Wednesday (June 11). Visit www.betknowmoreuk.org for more information.

Betknowmore will bring its information stall to Rugby Library next week.



KING EDWARD VI SCHOOL
SHAKESPEARE'S SCHOOL

OPEN MORNING
SATURDAY 28TH JUNE 9.00AM - 12 NOON

The Sunday Times
State Secondary
School of the Decade



Current Year 5 students and their parents are invited to attend this Open Morning for Year 7 Entry in September 2026. You will be given an opportunity to look around the School and meet staff and students and gain a flavour of what a K.E.S. education has to offer. Please also visit our website at www.kes.net/admissions for our Virtual School Experience.

The Headmaster will speak at 9.15am and 10.15am in the Levi Fox Hall.

"King Edward VI school is a rich and vibrant community. Pupils thrive at this school" OFSTED



Ofsted
Outstanding
Provider
In all areas.

Chapel Lane, Stratford-upon-Avon, Warwickshire, CV37 6BE
assure.wished@kes.net
t: 01789 293351 e: office@kes.net
w: www.kes.net

Regrettably there will be no parking available on the School site.



THE SUNDAY TIMES
SCHOOLS
GUIDE
2024
TOP 10 STATE
SECONDARY
SCHOOLS FOR
ACADEMIC
PERFORMANCE

Charity trekkers scale the heights

INTREPID staff from Rugby Borough Council spearheaded a charity trek up Snowdon to support research into prostate cancer.

Members of the council's On Track team and young people who have worked with the project conquered the highest peak in Wales – known locally as Yr Wyddfa – on Thursday (April 17) during a two-day residential trip to Snowdonia.

The charity trekkers chose to raise cash for Prostate Cancer Research in memory of On Track co-ordinator Kevin Brookes' late father, Jimmy Brookes, who died from the disease.

The team of 14 trekkers set off from the Snowdon Llanberis youth hostel and took six hours to climb

by **Andy Morris**
andy.morris@bullivantmedia.com

the 1,085-metre peak.

And the team have so far raised more than £2,500 – beating their fund-raising target of £500.

Kevin said: "This was the first time we have been able to return to Snowdonia since the pandemic and we're delighted to have brought together so many young people who have worked with On Track for the trip.

"Prostate cancer is the most common cancer in men, with one in eight men getting the disease. The risk for black men doubles to one in four, so it's vital to raise awareness of the disease and support research into diagnosing prostate

cancer earlier and improving the treatments currently on offer.

"Not a day goes by where I don't think about my dad and the love and support he showed us, and I'm so grateful to the whole team for choosing to support Prostate Cancer Research and the generous donations from all of our family and friends."

On Track was launched in 2013 and works in schools, youth clubs and communities across Rugby, running structured sport and recreational sessions, mentoring programmes and workshops dealing with issues which affect young people.

The team hosts weekly sessions at youth clubs in Brownsover, Long Lawford and Overslade, and designs and delivers education programmes



The charity trekkers at the top of Snowdon, the highest peak in Wales.

for school pupils who face barriers to learning, with the aim of keeping pupils in mainstream education.

On Track's trained sports coaches, youth workers and mentors have also developed strategies to help pupils deal with complex issues such as bullying, low self-esteem,

aggression and concerns over mental health.

Visit www.rugby.gov.uk/ontrack for more information about On Track.

Visit www.justgiving.com/search and search for 'Kevin Brookes' to donate to the team's fund-raiser.



Steve Heighton with three new Year 11 and 12 players at the first Project Forge session.

Project on the ball to inspire young footballers

A PROJECT to help 16 and 17-year-olds progress from junior to adult football is underway in Rugby.

Project Forge, a collaboration between Rugby Irons FC and Rugby Borough Council, held its first session on Sunday (June 1).

Steve Heighton, who runs the scheme alongside other FA qualified coaches, said: "We have a record of bring-

ing junior players into adult football and felt there were still more lads who wanted to try it but weren't sure how.

"The two local academies pick up a large number of players but there needs to be more done for the remaining young lads.

"There is a real need for a pathway as many children are stopping playing at the

end of their junior football, and then not confident to step up to adult football.

"We are providing free training sessions and a pathway into senior football to show these youths that the step up, with qualified coaches and proper management, can be easily achieved.

"The sessions are also open to any adults wishing to return to the game, and

especially to any players that have moved into the Rugby area and want to carry on playing."

Sessions take place at Harris School from 11am on the next four Sundays. Sessions are free. Participants only need to bring their kit and drinks.

Email Steve.Heighton@btinternet.com for more information.

entertainers presents

BRAND NEW SHOW FOR 2025

SCAN & BOOK

THE MAKINGS OF A MURDERER 2

THE REAL MANHUNTER

WITH SENIOR INVESTIGATIONS OFFICER COLIN SUTTON
WHO CAUGHT SERIAL KILLER, LEVI BELLFIELD

THE ALBANY theatre

FRI 20 JUN 7.30PM

02476 99 89 64 - ALBANYTHEATRE.CO.UK
ALBANY ROAD | COVENTRY | CV5 6JQ

KENILWORTH

Kenilworth Tennis Squash & Croquet Club

Crackley Lane,
Kenilworth CV8 2JS

01926 852673

Open 7 days a week

Beginners courses – Coaching
Social play – Mix ins
Competitions – Juniors
Club nights – Social events

Affordable plans!

- Pay monthly
- Pay annually
- Pay and play!

JOIN US!

- Tennis
- Padel
- Squash
- Croquet
- Cafe/Bar

Family Oriented
All Welcome
Ample free parking

Make lasting friendships and memories!

www.ktscc.co.uk membership@ktscc.co.uk



Bruiser's ribs, spine and pelvis were clearly visible when he was rescued by the RSPCA.

Woman is banned from keeping pets

A NEGLIGENT dog owner from Coventry has been banned from keeping a pet for ten years after her dog was found emaciated and in ill health.

Michaela Lorraine Turnbull, 29, of Sandythorpe, admitted an animal welfare offence following an investigation and prosecution by the RSPCA.

Her dog Bruiser was underweight with an untreated eye condition after Turnbull repeatedly failed to get him much-needed vet treatment.

RSPCA Inspector Ben Jones persuaded Turnbull to let him take Bruiser to a vet after repeatedly and unsuccessfully encouraging her to do so.

When Bruiser was rescued his ribs, spine and pelvis

by **Andy Morris**
andy.morris@bullivantmedia.com

were clearly visible, his ears appeared swollen, his eyes had mucus around them, and his front paws had open sores.

The fur on his legs was stained a yellow colour and his pelvis area had scars on both sides.

In the RSPCA report, the vet who examined Bruiser said: "In my professional opinion on a veterinary basis, Bruiser did not have his needs met due to the failure to provide a suitable diet, as noted through his severely poor body conditioning score."

"Due to the loss of body condition, he was therefore not protected from pain and disease as this led to entropion, the rolling of the eye-

lid margin. Similarly Bruiser was not protected from pain through ear inflammation and infection."

With an appropriate diet, Bruiser gained 1.8kg in six days but was later euthanised due to ongoing health issues.

Mr Jones said: "Animals deserve to live healthy lives and are reliant on owners to be given everything they need to survive, including an appropriate diet and vet care if they need medical treatment."

Alongside the ten-year animal ban, which she cannot appeal for five years, Turnbull was sentenced to a 12-month Community Order with 15 Rehabilitation Activity Requirement days and 150 unpaid hours work. She must also pay £350 and a £114 victim surcharge.

Shoplifter jailed for 14 weeks

A PROLIFIC Coventry shoplifter is the latest to fall foul of a police crackdown.

Mark Devine, 49, was convicted at Coventry Magistrates' Court of theft from a shop, handling stolen goods and possession of a blade and was sentenced to 14 weeks in prison.

He was also given a two-year Criminal Behaviour Order (CBO) which bans him from entering any Christian place of worship in Coventry, following a theft he committed at a church last year.

Officers identified Devine as being responsible for a series of thefts from shops in the south of the city and published an appeal to find



him. Security at one of the stores recognised him and called police, who arrived and arrested him on May 26.

A West Midlands Police spokesperson said: "We know how disruptive per-

Prolific shoplifter Mark Devine is behind bars.

sistent shop thefts can be for businesses and we are taking action against known offenders. Over the last few months, we have jailed dozens of offenders as well as issued CBOs against them.

"These orders, granted by the court, allow us to impose restrictions on where a person is allowed to go. By banning them from areas where they are known to offend, we can arrest and prosecute known prolific offenders more easily.

"This is part of our ongoing effort in Coventry against retail crime and anti-social behaviour."

Police arrest teenager after gun found

POLICE have recovered a firearm from an address in Coventry.

Officers were called to a property in the Potter's Green area shortly after 9am on Tuesday May 13.

They found a gun and ammunition, and arrested a 17-year-old boy.

The boy was taken into custody on suspicion of possessing a firearm. He

has since been bailed with strict conditions as police carry out further enquiries.

A West Midlands Police spokesperson said: "We're currently running Operation Target which sees us take a defiant stand against a range of serious and organised crime offences."

"Officers use local intelligence, seize goods, carry out warrants and target

offenders as part of Op Target's ongoing crackdown."

Anyone with information about serious and organised crime in their neighbourhood, should report it via 101 or Live Chat. In case of an emergency, dial 999. Alternatively, reports can be made anonymously via Crimestoppers on 0800 555 111.

Spring Arrives

at the garden lover's garden centre

Harefurlong Nurseries
www.farnboroughgardencentre.co.uk

A traditional garden centre that focuses on providing quality plants, garden products, homeware and gifts

national Garden Gift voucher

AQUATIC PLANTS

TUB & BASKET PLANTS

VEGETABLE PLANTS

SUMMER BEDDING

Treasured Teddies
AT
FARNBOROUGH GARDEN CENTRE

Come & visit our Treasured Teddies shop & see our massive selection of cuddly collectables & furry friends including especially loveable limited editions and everyday huggables

A world of Choice

OPEN 6 DAYS A WEEK
Tues-Sat 9-5.30pm
Sun 10.30-4.30pm
Open Bank Holiday Mondays

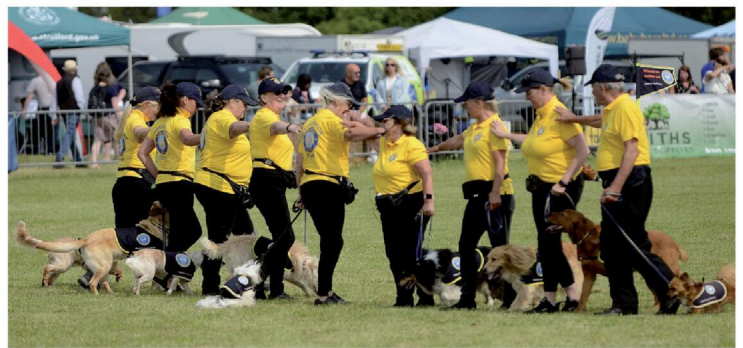
On A423 Southam Road, Nr Farnborough, Banbury, OX17 1EL
Tel 01295 690479
customersales@farnboroughgardencentre.co.uk

WHERE THINGS FOR YOUR GARDEN WON'T COST YOU THE EARTH

Kenilworth Show



LEFT: Sid Shaw (11) and his Hereford cattle. 2325012MMR



RIGHT: Nuneaton Dog Training Club put their best paws forward. 2325012MMR



Mary and Aria meet Spike the bearded dragon and Matthew Harvey from Wildlife Displays. 2325012MMR

Highlight of rural year

THOUSANDS of people flocked to Kenilworth Show at the weekend.

The highlight of the region's rural calendar was back with a bumper crop of family attractions and activities.

Taking place on the Stoneleigh Park Estate for the first time in two years, there were livestock and equine competitions, sheep shearing, modern and vintage machinery, classic cars, dog shows and a Warwickshire Young Farmers hub.

In a show first, The Trailer Stage showcased some of the

by Philippa Mingins

region's finest musicians and performers, while more than 120 trade stands featured a wide range of arts and crafts together with artisan breads, pies and preserves.

A freestyle motocross team provided high octane entertainment with some exhilarating stunts, while a Chinook helicopter reached even greater heights, doing a fly-over before landing to allow show-goers a closer look.

There was plenty to occupy

youngsters in the shape of bouncy castles, traditional fair stalls and even a mini hobby horsing race track.

And creative types could enter a homecraft competition designed to celebrate artistic talent from across the region.

The Kenilworth Show, which is Coventry and Warwickshire's largest one-day agricultural show, has been running since 1947 and is organised by the Kenilworth and District Agricultural Society (KADAS), a charity that promotes farming and offers

education around agricultural issues. Show director Charlie Weetman was bowled over by the turnout and said the show's future had never been brighter.

"It was great to see so many people, from all walks of life, come out to celebrate all things agriculture at what is a difficult time for so many farmers," he added.

"The level of support shown by the general public will help to energise the farming community and inspire those within the industry to move forward with genuine optimism."

INTERNATIONAL METALS & CABLE RECYCLING LTD

We purchase all Ferrous and Non Ferrous Metal Batteries and Cables

Collection Service Available

Long Marston Road, Long Marston, Stratford Upon Avon, Warwickshire, CV37 8AQ

01789 721 288

david@imrltd.co.uk

Open Mon/Fri - 8am - 5pm

Kenilworth Show



Cliff Griffin and Lauren Bennett with their Ford Pop. 2325012MMR



A clip of the action at the sheep shearing. 2325012MMR



Professor Crump and friends. 2325012MMR



ivie Nibloe Derry (four) shows her sheep. 2325012MMR



Vintage tractors on display. 2325012MMR



Crowds bask in the sunny weather. 2325012MMR

Pictures by Marcus Mingins

Florida, just how you like it.

Fly to Melbourne Orlando International Airport with TUI from six UK airports. Choose from a theme-park-filled break, throw in some beach time on a Multi-Centre escape, or explore on your own on a Fly Drive holiday.



World peace to be theme of parade

WORLD peace will be the theme of this year's annual Canley Parade and Big Lunch, which takes place on Saturday (June 7).

The University of Warwick, in collaboration with Warwick Arts Centre and the Canley community, is inviting local residents, schools, and community groups to explore ideas of identity, culture, diversity, place, climate, feelings, beliefs, unity and friendship – and creatively bring them to life.

The parade will run from 11am to 12.30pm, starting on Glebe Close and winding its way through Canley before arriving at Prior Deram Park, where the Big Lunch will take place from noon until 4pm. The event is free and open to all.

The route will be lined with colourful banners, handmade cos-

by **Andy Morris**
andy.morris@bullivantmedia.com

tumes, music and dance – including a special performance by the Canley Samba Band, who meet every Monday during term time at Canley Community Centre.

Organised by Playing Out Canley, the parade and Big Lunch are part of a wider community-led programme to celebrate children's right to play and encourage connection across the neighbourhood. The project is supported by The University of Warwick as part of its ongoing commitment to working in partnership with its local communities.

Gemma Wright, head of creative learning at Warwick Arts Centre said: "We're really looking forward to this year's Canley Parade and Big Lunch, it's always a special day that

brings people together. It's been a joy supporting local residents, schools and community groups in the lead-up to the event, and we can't wait to see how the theme of World Peace is brought to life on the streets of Canley."

Canley creative and resident Dotti Sallis added: "The Big Lunch and parade are a wonderful way to bring Canley's diverse community together. With support from Go Canley, Warwick Arts Centre and Warwick Volunteers, the event remains free and open to all.

"The Playing Out in Canley Steering Group made up of residents and community leaders have worked closely to make this celebration inclusive and memorable."

Several roads along the route will be temporarily closed for around 15 minutes each as the parade passes through. They include Glebe



The Canley Parade - 'a special day that brings people together'.

Close, Thomas Sharp Street, the bottom part of Mitchell Avenue by Charter Primary, Wendiburgh Street, Walsall Street, a short section of John Rous Avenue, Mayors Croft, Henry Boteler Road, and Sheriff Avenue, before the parade ends in Prior Deram Park around 12.30pm.

Residents living on these roads

will receive a letter in advance with details about the closures. A team of stewards will be on hand throughout the day to manage the road closures and keep everyone informed.

Visit @playingoutcanley on Facebook or email playingoutcanley@gmail.com for more information.

Godiva Festival photographer to focus on helping keen amateurs

THREE Coventry and Warwickshire-based photographers will have the chance to receive one-on-one mentoring with official Godiva Festival photographer David Archer on Saturday July 5.

Winners will gain valuable experience in photographing live events and

by **Aine McLean**

work with industry professionals, while also being gifted a pair of weekend tickets to enjoy the full festival.

The amateur photographers will see how the festival functions backstage, and be individually men-

tored by Mr Archer on how to capture professional shots.

He said: "This is a fantastic opportunity to enhance your real-life skills of creating images in the moment. It's really important to make the most of opportunities and time to get the best images."

Coun Abdul Salam Khan, Deputy Leader of Coventry City Council and cabinet member for events, added: "I'm delighted this competition is returning and giving budding photographers the chance to work with one of our professionals. "We love giving back to the city of Coventry and

this is just one of the many ways we are."

Entrants should complete the short online form and submit their best photo into one of three categories – portraits, action or music.

Participants must be 18 or over, live in Coventry or Warwickshire and be

equipped with their own professional camera and transportation.

An overall winner of the three chosen will be picked by David and receive an additional prize that is to be revealed soon.

Visit www.godivafestival.com for more. Entries close at 10am on June 13.



Helping You Resolve *Inheritance* Disputes.

Straight forward and compassionate
legal support for Will & Estate Disputes

Need *legal* guidance?
Contact us for expert advice today.

0121 233 4333
wilkes.co.uk

Your legal partner
for all things in *life*.



Museum aims to have something for everyone at Birthday Bash

A 'BIG Birthday Bash' takes place at Rugby Art Gallery and Museum next month to celebrate its 25th anniversary.

The free party on Saturday June 21 plans a host of fun and games for all the family, from parkour to face-painting and street art to scientists on stilts.

And at noon, Rugby Mayor Barbara Brown will unveil the latest star attraction added to the town's iconic collection of contemporary British art.

While the identity of the artist behind the new acquisition remains under wraps until the birthday bash, it can be revealed the artist has been nominated for the Turner Prize, received an MBE for services to British art and was recently elected to the Royal Academy of Arts.

Before the bash begins, a 'creative creatures' children's parade will take place in the

by **Andy Morris**
andy.morris
@bullivantmedia.com

town centre, starting from St Andrew's Church at 10.30am before making its way to the art gallery and museum.

Children and families from schools and community organisations have worked with artist Kate Morris to create costumes and crafty creatures for the parade.

The birthday bash will start at the Little Elborow Street venue at 11am, with Ascension Dance delivering pop-up parkour workshops for youngsters who want to experience the freedom and flow of free running.

Four, half-hour-long parkour workshops will take place during the day, with places bookable in advance, together with drop-in sessions starting at 11.45am and 2.30pm.

The Irregular Art Hub will host a street art workshop throughout the Big Birthday Bash, while Far Out Faces will offer free, animal-themed face-painting inspired by the forthcoming Great and Small Crafted Creatures exhibition, which opens on the day of the bash.

Science on Stilts will tour the venue during the party, with professional scientists – and accomplished stilt walkers – entertaining with simple experiments and answering visitors' scientific questions.

Event illustrator Esther Sketches will capture the creative spirit of Rugby Art Gallery and Museum with live illustrations inspired by the venue and visitors.

Visitors can enter the birthday spirit by creating a pom-pom party hat and helping to decorate a giant cardboard birthday cake, while Do Touch will bring a sculptural world of squishy, monster



Rugby Art Gallery and Museum will throw a Big Birthday Bash on Saturday June 21 to celebrate the venue's 25th anniversary.

creatures perfect for children under six to get to grips with and explore.

And the council's Play Rangers team promises to bring Absolute Playhem to the Big Birthday Bash with a range of fun activities for children.

Artist Mark Curtis Hughes will reveal the secrets of papercut art during a mask-making workshop until noon, when he hosts a special preview of his Ocean of Noise exhibition, which runs at the venue's Floor One Gallery from June 17 to 28.

Director's Cut will bring a photobooth to the bash so

visitors can take home a free birthday snap, and visitors can keep a unique memento from the birthday bash courtesy of Hello Sunshine illustrator Jo, who creates fun, ten-minute live portraits.

Coun Maggie O'Rourke, Rugby Borough Council's spokesperson for partnerships and wellbeing, said: "The Big Birthday Bash encapsulates everything Rugby Art Gallery and Museum has stood for during the past 25 years – encouraging visitors to learn, enjoy, create and discover.

"The birthday bash provides opportunities aplenty to get

involved and have fun, so come along, join the celebrations and have a great day out exploring everything Rugby Art Gallery and Museum has to offer."

Liberal Democrat counterpart Neil Sandison added: "The Big Birthday Bash promises to provide great fun for all the family, the young and the not-so-young, and you will have a great time with lots to see and do throughout the celebrations."

Visit www.ragm.co.uk/birthday-bash for more information, and to pre-book places at the parkour workshops.



 **SIMPSON**
FINANCIAL SERVICES

Thinking about
retirement?

Get your finances in order with award-winning independent financial advice in Leamington Spa.

Book a free retirement planning consultation with one of our experts today!

☎ 0800 6342 111

✉ office@simpsonfs.co.uk

🌐 www.simpsonfs.co.uk

Find out more



Follow us    

BARRY STEELE'S ROY ORBISON STORY



"True, Identikit Brilliance"

The Stage



SCAN ME

SATURDAY OCT 4

THE ALBANY COVENTRY

02476 998964 - ALBANYTHEATRE.CO.UK

*Featuring iconic hits from Roy Orbison, The Traveling Wilburys, Chris Isaak,
Johnny Cash and so much more - Touring Nationwide
Visit barrysteel.com for further information*



Representatives of The Bradby Club and Bilton Grange with then Rugby Mayor Simon Ward at last year's event.

Fun day set to bring in funds

A FAMILY Fun Day takes place at a Rugby infant school this weekend.

Bawnmore Community Infant School is hosting its first-ever Family Fun Day on Saturday (June 7).

Running from 1pm to 4pm, the event will feature live performances by Bawnmore pupils, Paddox School Choirs, Spellbound Dance, ATMA Karate and ROAR Cheerleaders.

Kids can let off steam on the bouncy castle, slide, climbing frame, tyre park and trim trail, or by taking part in egg and spoon races or the tug-of-war.

Food and drink includes On the Deck Horsebox Pizzeria, a barbecue, Ignazio Ice Creams and a Prosecco Bar.

The school's Executive Headteacher Mr Newton will also take on the Ice Bucket Challenge.

Organisers aim to raise over £1,000 for the Friends of Bawnmore's appeal to install new large playground equipment, and for mental health charity Place2Be.

The idea was sparked by Charlotte Pearson, a parent

of a Pre-School pupil and a local primary school teacher.

She said: "I wanted to create something fun and exciting for families. What started

Head of School Pam Davey added: "At Bawnmore, we work hard to involve all our families in school life. For working parents, weekday events can be tricky, so we hope a Saturday afternoon will be perfect for everyone to come together and enjoy the sunshine.

"We're also thrilled to support Place2Be, whose work is vital for our children's wellbeing. Our partner school, Bilton Junior School, has worked with them for years, and it's great to give something back.

"Bring your picnic blankets, camp chairs, and snacks, and settle in for a joyful afternoon of community, connection, and cause.

"Let's come together to support children's mental health and celebrate our amazing school community. We can't wait to see you there."

Entry costs £1 per person or £5 for a family ticket (up to 8 people).



as a small idea has grown into a full-blown extravaganza with entertainment, food, and games."

Charlotte's husband Jack is also helping the school's fundraising drive for Place2Be by taking part in this year's Berlin Marathon, aiming to beat his personal best time of 2 hours and 52 minutes which he clocked up in the London Marathon in 2022.

Jack Pearson is helping the school's fund-raising drive by training for the Berlin Marathon.

Join us in the garden

A SUMMER garden party is being held this weekend to raise vital funds for a century-old Rugby youth charity.

The Bradby Club Summer Garden Party takes place in the grounds of Bilton Grange Preparatory School on Saturday (June 7) from 2-5pm.

It will feature cream teas, live music, a bouncy castle, face painting and a magician. Plants, raffle tickets, prosecco, pimmis and ice-cream will be on sale.

The event will raise money for The Bradby Club, which has been working with young people in Rugby for 106 years. Its open-access evenings provide a safe centre for young people, with sport, cookery, residential courses and more. Professional

youth workers offer informal education in safe relationships and substance misuse in schools and other clubs. Last year's event raised around £3,000 for the club.

Alison Ross, a Bradby Trustee and Chair of the Fundraising Committee, said: "The Garden Party is our major fundraiser for the year and the club needs every penny it can get. We are incredibly busy with young and older members, young carers and a large number of boxers who train at the club most days of the week."

Tickets cost £15 for those aged 17 and over, and £5 for six-to-16-year-olds. Entry is free to children aged five and under.

Email hmadministrators@rugbyschool.net for tickets.

Exclusive Offer With All Fully Fitted Kitchens!

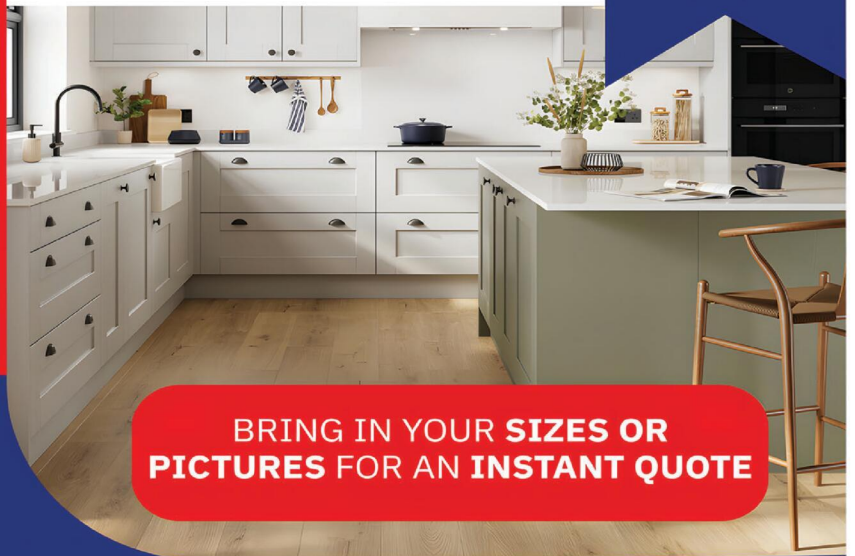
Free Upgrade from Tiling to Bespoke Glass Splashbacks with all Fully Fitted Kitchens - Save £1,800!

Bring This Advert With You



City Bathrooms & Kitchens
 024 7636 5877 | citybaths@gmail.com
www.city-bathrooms.com
 158 Longford Road, Coventry, CV6 6DR

Proud members of
Checkatrade.com Where reputation matters
Google 4.9 STAR CUSTOMER RATING



BRING IN YOUR SIZES OR PICTURES FOR AN INSTANT QUOTE

Open 7 days a Week

Opening Hours
 Monday to Friday: 8am – 5pm
 Saturday: 9am – 5pm
 Sunday: 10am – 4pm

Largest Kitchen & Bathroom Showroom in Coventry & Warwickshire

Brochure turns the pages on centenary

A COLOURFUL canter through the last 100 years has been published by Rugby's independent adult learning centre to mark its centenary.

The Percival Guildhouse - 1925-2025 is a glossy brochure documenting the St Matthew's Street centre's distinguished past in words and pictures, and looking to its future.

The Guildhouse was established by former pupils of Rugby School to honour the memory of Head Master, Dr John Percival, a great advocate of adult education. They acquired the home of noted antiquarian Matthew Holbeche Bloxam when it came up for sale and, on September 29, 1925

formerly opened the Guildhouse.

Sheila Winterton, a former centre manager at the Guildhouse who has written the historical narrative in the brochure, said: "You gain a fascinating insight into attitudes to continuing education and changes in society when you explore this history."

"The Guildhouse stayed open throughout the Second World War, serving as a social hub with students supporting one another through difficult times, enjoying topical debates and all the time adding to their knowledge through a wide variety of classes and activities."

"It was dubbed 'The Thinking Shop of Rugby' when it opened and so it has remained. It survived the

withdrawal of all external municipal funding in the 1970s and continues today thanks to the determination and loyalty of volunteers, staff and expert tutors."

Mrs Winterton paid tribute to the late Neil Aspinall, a former Guildhouse chairman and stalwart, for his 1988 book *Next To The Public Library*, which documented the history up to that point.

David Dove, Chairman of the Guildhouse Centenary Committee, said: "We are grateful to Rugby Group Benevolent Fund without whose support we would not have been able to produce this engaging brochure."

"Its launch is the perfect taster for our Art and Archive exhibition at Rugby Art Gallery and Museum, when we are staging the first major display of the abundant archive material we possess. Thanks to a grant from the National Lottery Heritage Fund, which recognises the national significance of the material, our team led by trustee Liz Pichon has been able to embark on the cataloguing and digitisation of our archives."

The Art and Archive show at Rugby Art Gallery and Museum runs until June 15. The commemorative centenary brochure is available from the Guildhouse and other outlets price \$4.99. All current students receive a free copy.

Sheila Winterton and David Dove take stock of 100 years of The Percival Guildhouse's history in words and pictures.



Anneka Hurst (centre) with Rhythm Time directors Dave and Lesley Pearce.

Success for a second time

'OVER the moon' - the owner of a business which runs early years music classes for little ones in Coventry and Rugby has celebrated winning a national award for the second year running.

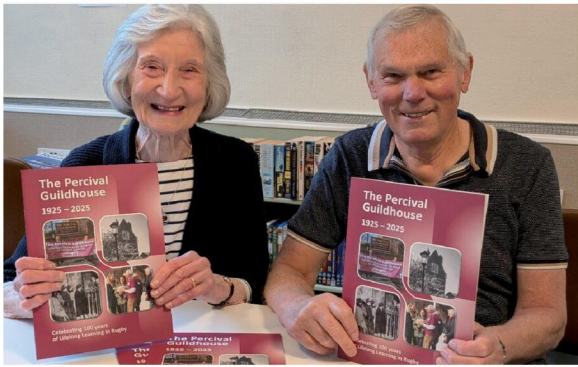
Rhythm Time Coventry, Rugby and West Northants has been named Franchise of the Year for Outstanding Achievement at the 2025 Rhythm Time National Conference.

Anneka Hurst took over the franchise in 2023 and has grown the business to welcome over 260 families every week to her multi-sensory music classes for babies,

toddlers and preschoolers. She said: "I'm over the moon to receive this award again."

"It means so much to be recognised for our achievements, but even more rewarding is seeing the joy, confidence and development that music brings to the children and families in our classes."

Rhythm Time, which is celebrating its 30th birthday this year, provides early years music classes to support children's physical, emotional and social development in line with the Early Years Foundation Stage (EYFS).





OUR BIG SALE IS STILL ON

INFLATION EVERYWHERE - BUT NOT AT CARPET MILL!

Everything is going up in price, the same for Carpets and this is why it pays to go to Carpet Mill. Manufacturers of yarn and other materials for making carpets have all had price rises and some manufacturers are busy changing their specifications to many ranges to compensate. They also get surplus rolls that they cannot sell to the big stores as they don't have enough stock left to service them.

Therefore, we are buying those rolls at a **FAT DISCOUNT** and passing it on to **YOU**.





Everything Reduced BE QUICK

BRAND NAME CARPETS AT LOW LOW PRICES

From quality Axminster to budget cord

We are recommended for our low prices, quality service and extensive range throughout the Midlands. There are no R.R. prices on carpets, so if others give 50% offers or sales discounts, is it 50% off their normal high prices. ALWAYS compare with Carpet Mills normal prices!!!!!!

CARPET MILL

CROMWELL STREET (OFF RED LANE) COVENTRY CV6 5EY TEL: (024) 7666 1985

SOME CUSTOMERS TRAVEL MILES - YOU DON'T HAVE TO - WE ARE HERE

www.salecarpet.uk



Flower power to honour Friends

by Andy Morris
andy.morris@bullivantmedia.com

FLOWER beds in Rugby's Caldecott Park have been planted with blue and white blooms to celebrate the 70th anniversary of the Friends of the Hospital of St Cross.

Rugby Borough Council came up with the idea to mark the charity's milestone and invited members of the Friends to attend the planting this week at the beds near the park's iconic Echo sculpture.

A range of plants was selected for the Friends' floral display, focusing on blue and white – the colours featured in the charity's branding.

Varieties of flowers and grasses planted in the beds include Magic Fountains Sky Blue delphinium, Blue Spire perovskia, Morning Light miscanthus sinensis and Alba echinacea purpurea.

The Friends began in 1955 when a group of Rugbeians formed the League of Friends to support the Hospital of St Cross.

From small beginnings – the charity's first financial report recorded a balance of just £90 in today's money – the Friends now boasts more than 170 volunteers and has donated equipment and supported projects at St Cross to the tune of more than \$4million.

The charity's volunteers also provide a range of support services at the hospital, from hosting bingo sessions for patients and a 'meet and greet' service for visitors to running the hospital's tea



bar and ward trolley service. Coun Maggie O'Rourke, Rugby Borough Council's spokesperson for partnerships and wellbeing, has a long history with the hospital.

Her father worked as an operating department practitioner and her mother in the dining room for consultants, before Coun O'Rourke spent 22 years working in the pharmacy department.

She said: "The Friends have made such a massive difference to St Cross over the past 70 years and, as a council, we're delighted to pay tribute to the charity's work on behalf of the residents of Rugby."

"From supporting patients and staff while raising money to purchase vital medical equipment, the charity's trustees and team of volunteers work tirelessly to support

our local hospital and the services it provides."

A Platinum Anniversary Appeal has been launched by the Friends to mark the charity's 70th anniversary, with the first fund-raising target of £70,000 being set to purchase a second ultrasound machine for maternity services at St Cross.

The appeal has raised more than £21,000 so far.

Left to right: Council gardener Benjamin Slater, green spaces chargehand Leah Anderson-Howe, council green space and biodiversity manager John Howes, Coun Neil Sandison, Coun Maggie O'Rourke, Friends of the Hospital of St Cross president Willy Goldschmidt, charity volunteer Garth Murphy, chair Doug Jones, and Coun Ish Mistry, deputy leader of Rugby Borough Council.

Doug Jones, chair of the Friends, said: "2025 is the platinum anniversary of the Friends and the planting in Caldecott Park is an amazing tribute and recognition of the efforts of all those volunteers and supporters, both past and present."

"It is only through the continued and unwavering generosity and support that we receive from the Rugby community that we are able to achieve as much as we do."

"As always, every penny raised supports the work of the charity in our continued efforts to improve the patient experience and to bring new services to the Hospital of St Cross and Rugby."

Coun Neil Sandison, the council's Liberal Democrat spokesperson for partnerships and wellbeing, said: "As someone who has previously worked at St Cross and currently a regular user of services at the hospital for health reasons, I really appreciate how the Friends have enhanced service provision at St Cross for Rugby residents."

Visit www.fsx.org.uk for more information on the Friends of the Hospital St Cross, and to support the Platinum Anniversary Appeal.

THE JONES FAMILY JEWELLERS

CASH YOUR GOLD & SILVER TODAY! PRICES ARE THE HIGHEST THEY HAVE EVER BEEN! GET A QUOTE TODAY!



LEAMINGTON SPA

01926 882552 - 3 Satchwell Walk, CV32 4QE

KENILWORTH

01926 954271 - 16 Talisman Square, CV8 1JB



Kenilworth Jewellery & Antique Valuation Day

Thursday 12th June

10am to 2pm

Valuations of Silver, Gold, Jewellery, Watches, Antiques, and Collectables

Items may be left to be consigned into Auction
**St Francis of Assisi Church Hall,
 110 Warwick Road,
 Kenilworth, CV8 1HL**



Refreshments in aid of WCS Care



Free Home Visits | Estate Clearances & Downsizing

If you have a lot of items you want valuing, we offer a **FREE** home visit service where we can come to your home. Contact us for more info

T: Hansons Warwickshire 07470 459309

E: clivejones@hansonsauctioneers.co.uk

www.hansonsauctioneers.co.uk



Hansons Auctioneers, Etwall, Derbyshire, DE65 6LS

RCN BEDS FURNITURE

Ottoman Beds



Corner Sofas



Huge selection of BEDS in Stock



Electric Beds



Mattresses from £89



WE HAVE COVENTRY'S BEST FURNITURE AND BED SHOWROOMS. COME AND SEE US TODAY!

Oak Furniture



Bedroom Furniture



Riser Recliners



Carpets



OPEN 6 DAYS A WEEK

Henley Road, Coventry, CV2 1AB

02476 603254



Recession buster furniture deals





LEFT: Talking classic cars. The sun shone as some 300 classic vehicles parked up in the Pump Rooms. **RIGHT:** Alex Haynes tries out a Blood Bike. Warwickshire and Solihull Blood Bikes provides a rapid response medical transport service to the NHS, free of charge. It is one of charities being supported by Leamington Rotary Club this year.

Thousands take a look at cars

CLASSIC motors lined up at Leamington's Pump Rooms for the annual Cars at the Spa festival on Sunday.

The event, organised by Leamington Rotary Club which is celebrating its centenary this year, attracted thousands of visitors to see the vehicles and to enjoy live entertainment on the bandstand.

Proceeds from charity fundraiser, sponsored by the Startin Kia Warwick car dealership and Motor Hub Warwick, will be split between Support Dogs and Warwickshire and Solihull Blood Bikes, which provide a voluntary rapid response medical transport service to the NHS.

Show organiser Rotarian Simon Evans said: "We are grateful to all those who helped us in the prepara-

tions for this event and, of course, all the classic car owners who have generously supported us.

"I would like to express our thanks for the wonderful sponsorship we have received from a number of local companies, including our two headline sponsors - Startin Kia Warwick and Motor Hub Warwick - and from Leamington BID

"I would also like to thank all those who advertised in this year's programme, our army of Rotary volunteers and those members of the public who generously donated money on the day."

Mark Treadwell, marketing officer for the British Motor Museum, with a vintage Mini from the Gaydon museum's collection.



Your views

RESIDENTS, visitors, and businesses are invited to have their say on car parking across Warwick district.

Warwick District Council is carrying out a review in a bid to ensure off-street car parks meet the needs of those who use them.

There are two online surveys, one for residents and visitors and one for businesses and employers. Information collected from the surveys will be used to inform the parking review taking place over the summer and be reported on in the autumn.

The survey does not cover on-street parking, which is managed by Warwickshire County Council.

Coun Will Roberts, WDC neighbourhood spokesman, said: "This survey will provide the opportunity to share your thoughts on the council's off-street car parks and help us to focus on what is working well, and any areas for improvement."

Residents, visitors and commuters should visit - forms.gle/ZN5j7Sd9kmA31PPw8, and businesses, employers and associations - forms.gle/jgqV7AZBugfu2CF8

Paper versions of the survey can be found at the Customer Service Hub at Leamington's Pump Rooms, Leamington Town Hall reception, from libraries in Kenilworth, Leamington and Warwick, Warwick Visitor Centre, and Whitnash Civic Centre

The closing date is July 14.

You are invited to a series of

Bible Talks at the Christadelphian Hall

Grosvenor Road CV1 3FZ near to the Central Six Retail Park
& free parking available on site



Saturday June 14th at 11am
"Peace in Our Time: Only
When Christ Returns"

Saturday July 12th at 11am
"Why Does God Allow
Suffering?"



A brief synopsis of each talk
is available on the website
www.CoventryGrosvenorRdChristadelphians.com

THE BLINDING BEST: How one Coventry business is raising the bar (and the blinds!)

In a world of quick fixes and throwaway trends, it's refreshing to find a company where craftsmanship, care and community still matter.

Step into the world of Brixham Blinds, and you'll soon see it's not just about dressing windows – it's about transforming homes. Based in the heart of Coventry and proudly serving the West Midlands, Brixham Blinds is a shining example of what happens when passion meets precision. With a service as

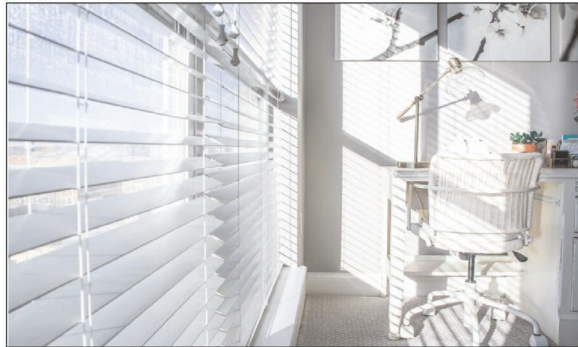
seamless as their sleek roller blinds, owner Zak Mangeria has spent the past ten years building something truly special: a local business that combines top-tier products with good old-fashioned service. "At Brixham Blinds, we pride ourselves on being more than just a supplier," Zak says. "We provide a made-to-measure service, tailored exactly to each customer's needs, no matter the size, style or shape of their space." And it shows. With 100% five-star reviews and an ever-growing number of loyal customers, Zak and his team have become the go-to for

both homeowners and tradespeople across the region. Whether you're styling a single window or outfitting a whole development, Brixham Blinds offers free consultations, expert advice, and solutions for every question you can think of. From minimalist vertical blinds for a contemporary living room to dramatic Roman blinds that give your kitchen a five-star feel, there's truly something for everyone. Their extensive collection includes roller, venetian, pleated, woodweave, blackout blinds and classic shutters – each one carefully crafted using high-quality materials, and all compliant with the latest child safety regulations. And if you're in the trade? You're in good hands too. "We work closely with builders, interior designers, and property developers to deliver bespoke blinds at competitive trade prices," Zak explains. "Everything is made to measure, and everything is backed by our five-year guarantee." Speed, too, is part of the Brixham promise. "We know timing is everything," Zak smiles. "That's why we offer a seven-day fitting promise and aim to get your blinds measured within 48 hours of consultation." It's that kind of commitment that keeps the rave



reviews rolling in: "Absolutely delighted with all of my blinds. Professional, lovely to deal with and the quality is superb." "They look fantastic. Lovely staff and very quick turnaround. Highly recommended." "Excellent service from start to finish. My blinds were fitted within a week of ordering them." And let's not forget the fitting. Brixham Blinds offers a no-obligation measuring service, a seven-day fitting promise, and a generous five-year guarantee. That's not just service - it's peace of mind. As someone who's wrestled with wonky DIY blinds in the past (hello, lopsided Ikea disaster), I can't tell you what a relief it is to meet

someone who gets it right the first time. Zak and his team don't just fit blinds - they make your house feel like a happy and well functioning home. Whether you're chasing that dreamy, show-home look or just want a better night's sleep in total blackout bliss, Brixham Blinds is ready to help you reimagine your space – beautifully, affordably, and reliably. With Zak at the helm, it's clear this Coventry gem isn't just good... They're the blinding best. Ready to find your perfect fit? Browse their collection online or book a free, no-obligation quote. The blind of your dreams is just a consultation away.



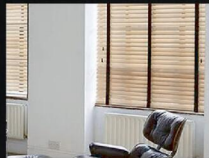
Call Zak and the Brixham Blinds team on 024 7666 6686
 Visit www.brixham-blinds.co.uk
 Serving Coventry and the West Midlands – trade and consumer welcome



VERTICAL



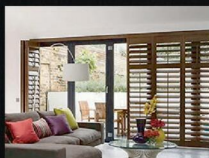
ROLLER



VENETIAN



ROMAN



SHUTTER



INTU

10 YEARS WARRANTY ON SHUTTER BLINDS



Available in beautiful and stylish Hard Wood and Faux Wood

WE WILL BEAT ANY LIKE-FOR-LIKE QUOTE

Visit us at: 21 Brixham Drive, Coventry, CV2 3LA
 Email: info@brixham-blinds.co.uk

Contact us today for a **FREE** no-obligation quotation

T: 02476 666686 brixham-blinds.co.uk

BRIXHAM

BLINDS

Residential and Commercial

Brixham blinds are a well-established blinds company offering to trade and consumer. With a great range of quality bespoke and made to measure blinds by an established blind company you can trust.

Whether you're thinking of vertical blinds, roller blinds, venetian blinds or roman blinds, shutter blinds, all of our blinds come with child safety regulations and fittings to make sure your home is safe.



Leamington Spa Half Marathon Returns for Its 8th Year on 15th June 2025!

The eagerly anticipated Leamington Spa Half Marathon is back for its eighth year on Sunday 15th June 2025, promising another unforgettable day of running, community spirit, and family fun.

Organised by **Raceways Events CIC**, a respected community interest company with a long-standing history of delivering high-quality events for both adults and children, this race has sold out for the past seven years – and 2025 is expected to be no different.

Starting and finishing at the iconic **Pump Room Gardens**, the event showcases the beauty and vibrancy of Leamington Spa, while providing a platform for both seasoned runners and first-timers to come together for a great cause.

Returning as headline sponsor for the second year, **Thomas Flavell & Sons Solicitors** – proudly based in Leamington Spa – will once again be fielding a team of staff and clients, showing their commitment to both fitness and community engagement.

This year, the race is raising funds for **Safeline**, a specialist Warwickshire charity dedicated to preventing sexual abuse and supporting those affected.

Safeline offers a wide range of vital services, including free counselling, helplines, Independent Sexual Violence Advocates (ISVAs), and national support services such as the Male Survivor Helpline and Online Counselling for survivors.

Participants can opt to **enter the race for free** by pledging to raise **£100 for Safeline**. Additionally, a portion of all race profits will be donated to the charity, helping to fund its ongoing work supporting individuals and families in need.

The event also includes a **FREE Kids Mile Fun Run**, starting and finishing beside the adult race line, allowing young runners to get involved in the excitement. All children will receive a **free medal**, making this a day the entire family can enjoy.

All adult finishers will receive a **medal**, with **optional t-shirts** available to reduce waste and support Raceways Events CIC's ongoing commitment to sustainability. Runners will benefit from **chip timing, post-race snacks**, and the option to purchase **race photography** to capture their achievement.

Traffic management for the event will

be professionally handled by **Traffix**, ensuring a safe and smooth experience for participants and minimal disruption to the local community.

The **#LeamHalf Event Village** at the Pump Room Gardens will be buzzing with activities, family entertainment, food, and drink – all just steps away from the finish line and kids' zone. It's more than just a race – it's a celebration of community, fitness, and local pride.

This year's event is proudly supported by a range of local sponsors whose passion and community spirit help make the race possible:

- **Thomas Flavell & Sons Solicitors** – Local legal experts with a strong community ethos, supporting families and businesses across Leamington Spa and beyond.
- **Fire & Earth** – A respected sports therapy and massage provider helping athletes stay strong, recover well, and perform at their best.
- **Bravissimo** – A national brand with Leamington Spa roots, empowering women to feel confident and comfortable with expert lingerie fitting services.
- **Hotpod Yoga** – Offering accessible hot yoga classes in a unique, immersive studio experience that supports flexibility,

mindfulness, and recovery.

- **CJS Events** – Trusted event professionals specialising in event logistics and support, ensuring smooth operations behind the scenes.
 - **HiQ Tyres & Autocare** – Your go-to for reliable vehicle maintenance and servicing, keeping the community safe on the road.
 - **Coventry Runner** – An independent specialist running shop providing expert advice, gait analysis, and the best kit for all runners.
 - **Winkworth Estate Agents** – Local property experts helping families find their perfect homes in and around Leamington Spa.
- Whether you're running for a personal best, supporting a loved one, or cheering from the sidelines, **make sure to mark Sunday 15th June 2025 in your diary** for one of the most exciting events in the local calendar.
- There are a number of road closures as specified on the map below to make it safe for the runners- for further details of this please visit our website.
- Entries are open now – don't miss your chance to be part of it!**
For more information and to register, visit: www.leamingtonspahalfmarathon.co.uk

LEAMINGTON SPA HALF MARATHON

Advance Notice of Road Closures Sunday 15th June 2025



For full road closure details in your area, please visit www.leamingtonspahalfmarathon.co.uk. If you have any questions, please email David on David@raceways.org.uk



Care leavers are being given cookery lessons thanks to a £1,000 donation.

A taste of the life to come

COOKERY lessons are being served up to care leavers in Warwickshire. Pertemps Network Group is donating £1,000 to help care-experienced young people, aged 18 to 25, buy household essentials, as well as supporting cooking lessons in Warwick. It comes as part of Warwickshire County Council's ongoing partnership with Pertemps, managing the council's own recruitment needs and supporting people into work. Pertemps spokesperson Laura Barnes said: "Pertemps is known for helping people into employment, and young people leaving care are among the most vulnerable groups needing this support. "Working in partnership with Warwickshire County Council, we have been introduced to

some of the regional initiatives and support programmes that care-experienced young people can access as they set up for independent living." WCC's children and families spokesperson John Coleman added: "We are grateful to Pertemps for this donation which will provide a real boost for our care leavers to help them as they prepare to live independently. "Pertemps is a friend of the county's Child Friendly Warwickshire initiative which brings local services, businesses and individuals together in a collective effort to ensure children and young people are happy, healthy, heard, skilled and safe. This is a great example of the support the growing network of friends provides."

Thousands to learn news of primary places

THOUSANDS of children across Warwickshire have been allocated their primary school places. Over 6,200 youngsters who are due to start school in September were offered their places on National Offer Day on Wednesday April 16. And nearly 98 per cent were allocated one of their top three school choices. Ninety per cent were allocated their first choice school. There were also 1,333 Warwickshire children who applied for a year 3 place at a Junior school. Of these, 98 per cent were given their first choice school and over 99 per cent were given one of their top three preferred schools. Most parents and carers now choose to apply for their school place online. They will receive an email, or can check WCC's online parent portal on National Offer Day to get details of their school place and instructions on what to do next. Letters to the remaining applicants have been posted. Johnny Kyriacou, director of education at Warwickshire County Council said: "I'm delighted to see so many children who are either starting or continuing their education journey in Warwickshire being given one of their top three choices of schools. "We're proud to have excellent schools in Warwickshire, providing our children with the best start to their education and I know they are looking forward to welcoming new

pupils from September." For the second year running, the council will automatically accept school places on behalf of each family. This means that parents and carers don't need to take any additional action beyond waiting to hear about transition arrangements from schools. Visit www.warwickshire.gov.uk/admissions for more information. ■ PARENTS and carers who would like their child considered for a Year 7 place at a Warwickshire grammar school next year must register their child for the 11+ test by the end of June. The 11+ test is used to assess whether a child is eligible for a place at one of the county's grammar schools. The test is open to all children who will be starting secondary school in September 2026 (those currently in Year 5), and registration is now open. The deadline to register is 4pm on Monday June 30. Any registrations submitted after will not be classed as being 'on time'. The test itself will take place this September, and parents will receive their child's results in October, before the deadline to apply for a secondary school place. To register your child for the 11+ test and for further information about the process, including key dates and what to expect on the day of the test, visit www.warwickshire.gov.uk/grammar-schools-11-test



SPRING SALE

ECONOMY CLASS PRICE, FIRST CLASS FEATURES



The scooter features 8" alloy style wheels, a detachable frame design, and a comfortable folding seat, aiding a smoother, more enjoyable journey. The Apex is the perfect travel partner, helping you get where you need to go. Easily breaks down for transportation giving you freedom and independence.

£699.99

or
***£32.64**
per month

Save
£200

was **£899.99**



***APR 29.9%**

deposit £50.00 24 payments of £32.64 total payable £833.36 Please note finance it through Snap Finance. They are the credit broker Max Mobility Ltd is the introducer. Snap Finance will provide you with all their terms and conditions. APR may be higher or lower depending on personal circumstances. Call for details

CALL TO BOOK YOUR SCOOTER SERVICE

02476 630444

Max Mobility Ltd, 7 Sherbourne Arcade, Coventry, CV1 1DN (opposite Home Bargains) www.maxmobilityltd.co.uk

Pictures for illustration • Prices with VAT Exemption

New police vans help trap drivers

NEW speed camera vans helped Warwickshire Police catch over 17,400 speeding drivers during a month-long operation.

The three new state-of-the-art vans were deployed alongside other fixed, mobile and average speed cameras during a road safety operation in April.

The vans, which were added to the force's fleet last October, feature high specification cameras that provide clearer images, better facial identification, and night vision.

During the operation, the force also took the National Highways Op Tramline HGV supercab out on the M40, M42, M6 and M69 to film dangerous and careless driving offences from an elevated position.

Officers in the cab caught 62 drivers using a phone behind the wheel, 21 drink-drivers, 25 drug-drivers, 24 people not wearing a seatbelt, and nine speeding drivers.

Insp Dave Valente said: "We know that some people don't think that speeding is wrong or indeed an offence, but it's a fact that even small increases in speed result in sig-

nificant increases in risk to you and other road users. Your speed determines the severity of any crashes and injuries."

"That's why we have grown our speed enforcement team. We've got three new speed detection vans, new technology and processes to encourage drivers to take responsibility for road safety by driving safely within the speed limit at an appropriate speed for the conditions.

"Many of the speeding drivers we've caught have been offered a speed awareness course if they have not already attended one in the last three years.

"Driver retraining courses have a direct effect on road safety because we know that those who go on a training course are less likely to reoffend in the next six months after the course.

"While most drivers play their part in reducing collisions by always driving safely within the law, we are asking the few who choose to ignore the law to change their dangerous driving behaviour."



Romanian officers to get more training in human trafficking

EVERY trainee police officer in Romania is to receive special training in human trafficking from Warwickshire Police.

The Romanian police force and border authorities approached DCI Dave Andrews (pictured), Warwickshire Police's trafficking and exploitation lead, after he presented a conference on human trafficking in Romania.

They wanted him to help them become more victim focused when tackling the exploitation and trafficking of vulnerable people, many of whom may end up trafficked into the

sex trade across Europe.

He gave training to 25 border officials based at the Romanian capital's Bucharest Airport.

DCI Andrews is an expert on modern slavery and human trafficking. He has given evidence to House of Lords and House of Commons committees reviewing the Modern Slavery Act and helped negotiate an agreement between the UK and Romanian governments to tackle the exploitation of vulnerable people.

DCI Andrews said: "It's great to have been a part of something that

has made such a difference to the lives of people who are being exploited across the continent.

"Sadly though, the trafficking and sexual exploitation of people continues, and we know that many people trafficked out of Romania can end up as victims of sexual exploitation here in the UK.

"It's happening in this country - it's happening in Warwickshire. Some of these women will be from overseas, others will be British. We all need to be on the lookout for the signs and report concerns."

VICTIM'S BRAVERY PRAISED: A BRAVE woman from Warwickshire who spoke out after being the victim of controlling behaviour has seen her abuser put behind bars.

Luke Jones, of Alveston in Derbyshire, has been jailed for two years after his victim revealed the abuse she was being subjected to.

In interview, 28 year-old Jones told lie after lie - but Warwickshire Police were able to gather enough evidence to secure a

charge for controlling and coercive behaviour. And at Warwick Crown Court he was jailed for two years, with a ten-year restraining order also put in place to protect the victim.

Det Sgt Ramsay said: "As is typical of abusers, Jones (pictured) thought he could control the situation - even when he found himself across the table from detectives.

"His lies didn't protect him from being charged, convicted and sentenced. I'd like to thank the victim for her bravery."



LOVE RUGBY FESTIVAL

20 June - 6 July 2025



The Love Rugby Festival is a celebration of arts, music, sports, and family entertainment, bringing the community together for an unforgettable experience.

From live performances showcasing local musicians to theatre shows, the festival offers something for everyone. Families can enjoy fun activities, and hands-on arts and crafts.

Sports lovers can take part in exciting taster sessions and the 'Couch to 5K' fun run, which winds through the town centre.

See the festival guide and register for the fun run at: rugby.gov.uk/loverugby

Ambulance service staff to share inspiring tales in Pride Month

WEST Midlands Ambulance Service (WMAS) is celebrating Pride Month 2025 with the launch of its 'Proud to Be Here' campaign.

Throughout June, WMAS will share powerful stories that explore what it means to be proud – be that as part of an inclusive workplace, to allow staff to express who they are, proud to stand together as a diverse team and deliver excellent patient care.

It is a celebration of identity, community and belonging, shining a spotlight on LGBTQ+ colleagues from across the Trust.

PROUD Network Chair, Ash Deakins, said: "Pride Month is about celebrating our community and acknowledging the contributions LGBTQ+ people make to the world around us.

"At a time when for many in our community, simply being able to show up as their authentic selves takes a lot of courage, Pride Month couldn't be more important and serves to remind us how far society has come, but how important it is for us to keep moving forward.

"I am incredibly proud to work for an organisation that not only recognises who I am, but welcomes and embraces diversity within it - and to be able to support our people to be their authentic selves, be vis-



WMAS staff are coming together to mark PRIDE month. s

FOCUS ON VOLUNTEERS: PEOPLE who work and volunteer at West Midlands Ambulance Service (WMAS) are stepping into the spotlight during Volunteers Week.

The Trust has over 500 patient-facing volunteers and more than 500 staff who give up their time to support the service and their colleagues in voluntary positions across the Region.

From Community First Responders who are often first on the scene of a 999 call, to BASICS emergency medics who provide advanced clinical care at the roadside, the front-line volunteers are a vital part of the emergency response team.

As well as emergency patients, there's a dedicated team of Patient Transport Service (PTS) volunteer

car drivers who ensure patients get to vital appointments safely and comfortably.

Throughout the week, WMAS will be showcasing the variety of volunteers across their Social Media channels, highlighting the diverse ways they contribute and the impact they have.

Professor Ian Cumming, the Trust's Chairman, said: "We have a tremendous number of people who go above and beyond every single day, often quietly and without recognition, to volunteer to help make this the organisation that it is.

"Volunteers' Week is our chance to say thank you – not just for what they do, but for who they are. They are an essential part of our ambulance family. To each and every one of you, thank you."

ible and make their contribution to making our organisations and communities a more inclusive space is a privilege."

The Trust's commitment to inclusion is reflected through its active staff networks, regular training, and a clear stance against any form of discrimination or hate.

Valued

Director of People, Carla Beechey, added: "WMAS is committed to creating a work environment where everyone feels safe, respected and valued.

"Be it through who they are, who they love, a disability, their sex or the colour of their skin, we see the challenges our staff face both in their professional and personal lives.

"We feel as an organisation that we want to be open and honest with them and show that we will support them to deliver excellent patient care.

"Many staff still face challenges due to their background and that is why it is so important that we demonstrate visible support as their employer."

Questions about care? We can help

We know moving into residential care is an emotional and difficult decision with lots to think about.

With over 30 years' experience, we can help you navigate the process of finding the right care home, so that you feel confident about the decision you make – whether that's choosing a WCS Care home, or one outside our group that's more suited to your needs.

If you've got questions about care, or one of our care homes, our Trusted Advisors can help.



Philip Rainsford



Woodside Care Village, Warwick Castle Brook, Kenilworth

07802 728447

p.rainsford@wcs-care.co.uk



Four Ways, Leamington Spa Sycamores, Leamington Spa

07802 728443

j.rugg@wcs-care.co.uk



Josephine Rugg

Russell Lane

The Jewellers of Warwick

TIME TO HAVE A SORT OUT?



Been meaning to do something with all those pieces you are no longer wearing?

NOW IS THE TIME

Gold and silver jewellery purchased.

Any amount, any condition.



Website: www.russell-lane.co.uk

Tel: 01926 494 494 | Email: sales@russell-lane.co.uk

2 High Street, Warwick CV34 4AP

Keeping your garden growing and helping wildlife in the 'gap'

IN JUNE, many gardeners across the UK experience a lull in their outdoor space, also known as the 'June gap'. This time of the year can leave garden beds and containers looking a little bare.

British Garden Centres is recommending certain plants to help bridge the June gap, keep your garden vibrant and colourful, and provide pollinator insects with a source of nectar and pollen when wildflowers and spring blooms have faded.

Julian Palphramand, Head of Plants at British Garden Centres, said: "We know that the June gap can be a tricky time for both new gardeners and our precious bees. That's why we've picked out lots of easy-to-grow plants that flower just when you - and the bees - need them most."

Antirrhinum: Commonly known as snapdragons, these are cheerful, easy-to-grow annuals that provide great colour and attract pollinators to your garden, especially during the June gap after other spring blooms have faded. They thrive in well-drained, fertile soil and full sun, making them ideal for borders, containers, or as cut flowers.

Campanula: commonly known as bellflower, Campanula is a

beautiful plant for the June gap with its bell-shaped, tubular, or star-shaped flowers in shades of blue, purple, and pink. They also provide nectar for pollinators and will bloom throughout June and beyond.

Foxgloves: Foxgloves are easy-to-grow plants that thrive in moist, well-drained soil and prefer dappled shade, though some types do well in full sun or even full shade. They flower in early summer, producing tall spires of bell-shaped blooms that attract bees and other pollinators, making them a great choice for filling the June gap in your garden.

Geraniums: Geraniums are easy to grow in borders, containers or window boxes and are long-flowering plants that attract pollinators to your garden, making them excellent for the June gap. They thrive in full sun to partial shade and require minimal care, all you need to do is deadhead spent blooms to encourage more flowers.

Geum: Perfect for borders, geum is an excellent choice for bridging the June gap because they reliably flower from late spring through summer, providing both colour and nectar when many other spring plants have



Roses are valuable garden plants that can play an important role in supporting pollinators during the 'June gap'.

finished and before summer perennials reach their peak. Its bright, cup-shaped flowers in shades of orange, red, yellow, and occasionally peach or pink are great for supporting garden wildlife during this seasonal lull.

Hebe: Hebe is an excellent plant for bridging the June gap because it begins blooming in early to midsummer, providing nectar-rich flowers before the main flush of summer flowers is in full swing. Its spikes of small, colourful flowers come in pink, purple, blue, or white and are highly attractive to bees and other pollinators. Hebe is also evergreen and offers year-

round structure and visual interest in the garden borders.

Lupins: These beauties are easy-to-grow plants that add height and pops of colour to your garden, with statuesque spikes of flowers in shades of blue, pink, purple, yellow, and white. They bloom from late spring through early summer, perfectly bridging the June gap when many other flowers have finished. Plant them in a sunny spot with well-drained soil, water them regularly, and enjoy their seasonal blooms as a focal point in your plant displays while supporting bees and other pollinators in your garden.

Nemesia: Nemesia is a fragrant, easy-to-grow annual with dainty flowers that are perfect for brightening up garden borders, containers, or hanging baskets. These compact plants thrive in full sun or light shade and prefer moist, well-drained soil, making them ideal for most gardens. Nemesia blooms from late spring through summer and sometimes into autumn, so it is a great plant to invest in for your outdoor space.

Nepeta: Nepeta is a hardy perennial with aromatic, grey and green leaves and small, lavender-blue, white, or purple flowers that bloom from late spring through summer. Its attractive foliage and long flowering period make it an excellent choice for filling the June gap, and it just needs a trim after the first flowers have faded to encourage a second bloom.

Roses: Roses are valuable garden plants that can play an important role in supporting pollinators during the June gap. Look for varieties with open, single or semi-double flowers as these will bloom from late spring into summer. By selecting the right roses and combining them with other nectar-rich plants, you can help bridge the June gap and support a thriving pollinator community in your garden.



By Coach from Coventry, Leamington Spa

Reader Travel CoventryObserver.co.uk



ROYAL INTERNATIONAL AIR TATTOO, FAIRFORD

Departing Fri 18 Jul '25

Join us for the world's greatest air show, the Royal International Air Tattoo at RAF Fairford in Gloucestershire! Marvel at the special flypasts and spectacular performances by the world's leading aerobatic teams and enjoy the static displays too.

SO MUCH INCLUDED...

- ✓ Return coach travel from Coventry, Leamington Spa
- ✓ 2 nights at a selected hotel (JG3 or JG4 rating) with dinner & breakfast
- ✓ Admission to the Royal International Air Tattoo on Saturday, with coach transfer

▶ SAVE £10 - Quote **OSG**
- Book by 20 Jun 2025

3 Days by Coach **only £299**

Single Supplement £90



BOURNEMOUTH, WEYMOUTH & THE NEW FOREST

Departing Mon 25 Aug '25

On this trip to Dorset, we make our base in the vibrant town of Bournemouth, famous for its two piers, sandy beach and magnificent endless countryside. With an included trip to Weymouth and the New Forest, this break is set to be a fabulous five days away.

SO MUCH INCLUDED...

- ✓ Return coach travel from Coventry
- ✓ 4 nights at a selected hotel in Bournemouth (JG2 rating) with dinner & breakfast
- ✓ Excursions to Weymouth & the New Forest (Lyndhurst & Lymington)

Optional excursion to Salisbury (£14pp)

5 Days by Coach **only £349**

Single Supplement £75



BLACKPOOL ILLUMINATIONS WEEKEND

Departing Fri 10 Oct '25

This great-value break includes an evening drive to see the dazzling Blackpool Illuminations, as well as a visit to bustling Fleetwood Market to grab some bargains. From strolls along the beach to lovely views of an iconic landmark, Blackpool has it all!

SO MUCH INCLUDED...

- ✓ Return coach travel from Coventry
- ✓ 3 nights at the Bluewaters Hotel, Blackpool (JG2 rating) with dinner & breakfast

- ✓ Entertainment some evenings
- ✓ Blackpool Illuminations Evening Drive
- ✓ Free time in Blackpool
- ✓ Excursion to Fleetwood Market

Optional excursion to Southport (£10pp)

4 Days by Coach **only £229**

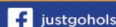
Single Supplement £75

For more information, or to book, please call

03332 342 514 Quote **osg** justgoholidays.com/OSG

033 numbers are free within inclusive minutes packages otherwise standard rates apply.

or visit us online at



These packages are subject to JustGo! Holidays terms & conditions. Coach bookings are protected by Bonded Coach Holidays & the Association of Bonded Travel Organisers Trust Ltd. Air holidays are ATOL protected No.30883. Prices are per person, based on two people sharing a room & are based on bookings made up to 7 days post-publication, after which prices may fluctuate. Calls to OSO numbers are free with inclusive minutes packages, else standard rates apply. Other fees of date, hotel, airport or pick-up location may incur a supplement. Please see website or call for full details.



We can help with life after a stroke.

Call the Stroke Support Helpline today.

0303 3033 100

stroke.org.uk

Stroke Association

Finding strength through support

© Stroke Association 2025
Stroke Association is registered as a charity in England and Wales (No 21015) and in Scotland (SC037789).
Also registered in the Isle of Man (No. 945) and Jersey (No. 221), and operating as a charity in Northern Ireland.



COMMUNITY SUPPORT COFFEE MORNINGS

Bright Dawn Home Care are here to support our local community every last Tuesday of the month.

These sessions are dedicated to individuals and families living with conditions such as:
Alzheimer's / Dementia, Multiple Sclerosis, Parkinson's, Stroke Recovery, Motor Neurone Disease, Muscular Dystrophy

We believe in the power of connection and support. Each session offers invaluable advice and guidance from specialists, as well as a chance to ask questions and share experiences.

It's completely free – and includes tea, coffee, and cake!

Please join us for a friendly, welcoming conversation and the chance to connect with others who understand.

St Philips Church in Dorridge
- from 11:15 AM to 12:45 PM.

Next Coffee Morning: Tuesday 24th June –
Guest Speaker: Stroke Association & Speech Therapist

If you have any questions, feel free to reach out to our friendly team at Bright Dawn Home - 01564784598

St Philips Church, Manor Road, Dorridge, B93 8DX
Limited parking is available at the church, with additional free parking (2hours) behind St Philips Church Centre. A ticket must be displayed.



Bright Dawn Home Care
'Because We Care'

SUDOKU

Complete the grid so that every row, every column and every 3 x 3 box contains every digit from 1 to 9.

EASY

	6			8		4		
	1		5	9			8	2
	5	8			2		6	
	3				4		1	5
4				7	1			
1	8		9	5		2		
	4		1				7	8
		1		3	8		2	
8	6	4					3	

HARD

			3			6	4	
	8			6			9	
			7	8		2		
		5	2	9				
	1						6	
				7	8	5		
		6		4	5			
	5			3			8	
	7	9			2			

PATHFINDER

Beginning with the top highlighted letter, follow a continuous path of words associated with the given subject. The trail goes through each letter once, twisting up, down and sideways, but never diagonally.

Sheep breeds

C E D L E N C S W D A M O E A
 H C A E E D O T O E R T O D N
 A R F I C N E D L C A H R I S
 L O E U E S V W T E F E B R O
 L A I L E T L H I R E G B Y A
 E L S B R C E X E F A D A N T
 B A E L S H E E T E C M O U A
 E D Y E N I V U L W S H D N I
 U H S W T O W N B E L R E E X
 L A P E D D O O K I H B Y N M
 A W S C R O F X C R S Y E O O
 L E E K L R D W I E G L L R H
 A D C A E E H D T I R N D T O
 L A C F D E T N S N E W O E R
 E J O B S H L A T O D O R S N

Solutions opposite

CROSSWORD

1		2		3		4		5		6	
7						8					
9								10			11
				12	13						
			14								
15						16					
										17	
18						19		20			
21								22			

ACROSS

- 7. Sullen (5)
- 8. Bowers (7)
- 9. Rich (7)
- 10. Entice (5)
- 12. Loud-voiced (10)
- 15. Arsonist (10)
- 18. Artless (5)
- 19. Suffer (7)
- 21. Spin (7)
- 22. Short (5)

DOWN

- 1. Burden (10)
- 2. Sham (5)
- 3. Kind (4)
- 4. Hurry (6)
- 5. Slaughterhouse (8)
- 6. Tumult (7)
- 11. System of musical notation (5,3-2)
- 13. Fondly (8)
- 14. Attain (7)
- 16. Hardened (6)
- 17. Coach (5)
- 20. Liability (4)

Scribble pad

LADDER

Using the clues provided, fill in each step of the ladder with a new word, changing one letter at a time.

- Sack employee
- Cable
- Sported
- Integral
- Arrive



NINER

Each number from 1 to 9 represents a different letter. Solve the clues and insert the letters in the appropriate squares to discover a word which uses all nine letters.

- 3755478 gives a bad person;
- 48925 gives a good person;
- 7817371645 gives a person.

1	2	3	4	5	6	7	8	9
---	---	---	---	---	---	---	---	---

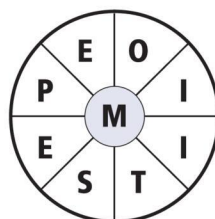
CODEWORD

This puzzle has no clues. Instead, every number printed in the grid represents a letter, with the same number always representing the same letter. For example, if 8 turns out to be a V, you can write in V wherever a square contains 8. Using your knowledge of words, complete the puzzle.

		22		4			2		5	12	9	13	6		
A															
B	25	15	1	3	5	16	5		12			6			
C															
D		1			10			9		13	12	3	7	5	
E															
F	22	3	7	5	2	13	25	11	7				7		
G															
H						4				26		17	18		
I															
J	3	21	19	13	26	10	7			22	9	13	24	5	
K															
L															
M															
N	14	26	25	8	8			19	20	23	25	21	25	22	
O															
P	26		9			13				13				16	
Q															
R	3						22	5	14	26	5	22	9	5	11
S															
T	19	25	10	9	22				26			19		10	
U															
V		22				3			3	10	7	26	6	18	5
W															
X	22	24	26	6	6			7							5
Y															
Z															

WORDWHEEL

You have 10 mins to find as many words as possible using the letters in the wheel. Each must use the hub letter and at least 3 others. Letters may be used only once. You cannot use plurals, foreign words or proper nouns. There is at least one 9-letter word to be found.

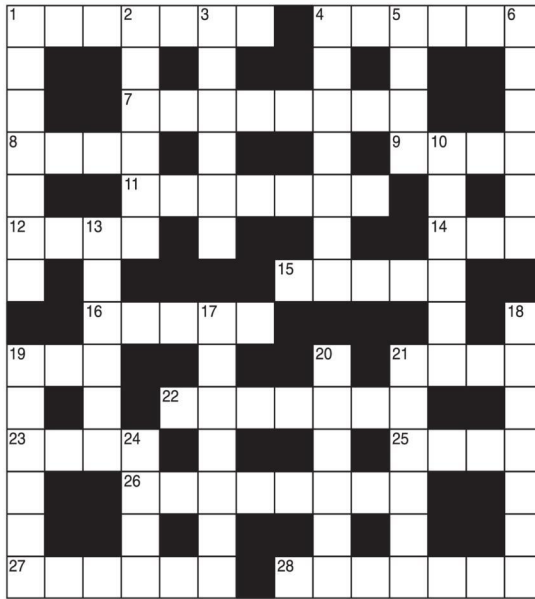


How you rate
 15 words: average 25 words: very good
 20 words: good 30 or more: excellent.

GENERAL KNOWLEDGE CROSSWORD

ACROSS

- 1 A reed mace (7)
- 4 & 21 Across Structure situated at the NE corner of Hyde Park (6,4)
- 7 A clear meat soup (8)
- 8 Reflection of sound (4)
- 9 Cinque port on the east Kent coast (4)
- 11 Plane figure of eight angles and sides (7)
- 12 & 6 Down Famous diarist and author (4,6)
- 14 Atom with a positive or negative electric charge (3)
- 15 Popular perennial or half-hardy annual (5)
- 16 A seabird, part of the Sulidae family (5)
- 19 & 22 Across A knight of immaculate purity in Arthurian legend (3,7)
- 21 See 4 Across
- 22 See 19 Across
- 23 US state, capital Des Moines (4)
- 25 Late-medieval stringed musical instrument (4)
- 26 In history, a well-known prison-fortress in Paris (8)
- 27 Inflorescence opening successively from base to apex (6)
- 28 The first artificial satellite (7)



DOWN

- 1 Erect-eared curly tailed African hunting dog (7)
- 2 Bushy-tailed N American nocturnal carnivore (6)
- 3 Composition for solo piano (6)
- 4 Large extinct elephant (7)
- 5 Slip of cane, etc. producing sound by vibration in a clarinet, etc. (4)
- 6 See 12 Across
- 10 Drug of syrupy consistency intended to lubricate the throat in cases of cough and irritation (6)
- 13 One of a Semitic people traditionally descended from Abraham (6)
- 17 Kind of golf club (7)
- 18 Jewish usurer in The Merchant of Venice (7)
- 19 An arachnid (6)
- 20 One of the twelve Apostles (6)
- 21 The four weeks immediately preceding Christmas (6)
- 24 Courtesy title for a priest (4)

SOLUTIONS

ACROSS: 1 Bulrush; 4 Marble; 7 Consomme; 8 Echo; 9 Deal; 11 Octagon; 12 John; 14 Ion; 15 Phlox; 16 Booby; 19 Sir; 21 Arch; 22 Galahad; 23 Iow; 25 Viol; 26 Bastille; 27 Raceme; 28 Spunk. DOWN: 1 Basenji; 2 Racoon; 3 Sonata; 4 Marmoth; 5 Reed; 6 Evely; 10 Elixir; 13 Hebrw; 17 Brassie; 18 Shylck; 19 Spider; 20 Phillip; 21 Advent; 24 Abbe.

General Knowledge Crossword

ACROSS: 7 Moody; 8 Arbour; 9 Opulent; 10 Temp; 12 Stentorian; 15 Incendary; 18 Nave; 19 Undergo; 21 Revolve; 22 Brief; Down: 1 Imposition; 2 Bogus; 3 Type; 4 Hasten; 5 Abattoir; 6 Turnoil; 11 Tonic so-fa; 13 Tenderly; 14 Achieve; 16 Inured; 17 Train; 20 Debt.

Crossword

DEVALUING Gristone, Dorset Down, Leyn, Exmoor Horn
 Niner Hebrdean, Soay, Badger Face Welsh Mountain, Derbyshire
 Down, Blue Texel, Vendean, Cotswold, White Face Dartmoor, Speckled Face, Swaledale, Jacob, Shetland, Herdwick, Oxford
 EPTOMISE Charollais, Blue-faced Leicester, Cheviot, Wensleydale, Bulaia
 Wordwheel Pathfinder

24=K, 25=A, 26=U
 17=Z, 18=G, 19=P, 20=Y, 21=M, 22=S, 23=J,
 10=N, 11=R, 12=X, 13=O, 14=Q, 15=C, 16=V,
 1=H, 2=B, 3=L, 4=W, 5=E, 6=L, 7=D, 8=F, 9=T,
 Fine, Fire, Wire, Core, Come, Comb.
 Codeword
 Ladder
 Sudoku

3	7	9	8	1	2	4	5	6
4	5	1	6	3	7	9	8	2
8	2	6	9	4	5	1	7	3
9	6	3	1	7	8	5	2	4
2	1	8	4	5	3	7	6	9
7	4	5	2	9	6	8	3	1
6	3	4	7	8	9	2	1	5
1	8	2	5	6	4	3	9	7
5	9	7	3	2	1	6	4	8

Hard

8	7	6	2	4	5	1	3	9
5	9	1	7	3	8	6	2	4
2	4	3	1	6	9	5	7	8
1	8	7	9	5	3	2	4	6
4	2	5	6	7	1	8	9	3
6	3	9	8	2	4	7	1	5
3	5	8	4	1	2	9	6	7
7	1	4	5	9	6	3	8	2
9	6	2	3	8	7	4	5	1

Easy
 Sudoku



CoventryObserver.co.uk

Leamington Observer

Rugby Observer

It's time to Like, Follow & Subscribe

Don't be LEFT BEHIND.....

CoventryObserver

LeamingtonObserver

RugbyObserver

@CovObserverNews

@LeamObs

@RugbyObserver

CovObserver

Leamington.Observer

Rugby.Observer

BREAKING NEWS WHAT'S ON SPORT INTERVIEWS

Check out our E-Editions!

Coventry Observer .co.uk

Thu, April 20, 2017 12:00

Upgraded route set to improve

Gain Much Needed Extra Space With Our New Offer For Your Family And Friends

Windows Plus

Windows | Doors | Conservatories | Porches | Fascias & Soffits

CALL TODAY FOR A QUOTE ON OUR BEST PRICE 02476 230222

WWW.WINDOWS-PLUS.CO.UK

The Coventry Observer brings you the news free of charge every week

Rugby & Lutterworth Observer

Thu, April 20, 2017 12:00

Izzy did her top

DRIVES4U

Are you looking to improve your driveway?

We can provide you with a free quote for your driveway in Coventry, Birmingham, Leeds

5 Year Guarantee

Tel: 0800 3032559 | Mob: 07773 911552 | www.drives4u.co.uk

Championing the needs of Rugby residents since 1991 and delivering the news to you every week

Leamington Observer Incorporating Warwick, Whitnash and Kenilworth

Thu, April 20, 2017 12:00

Homes to a re

DRIVES4U

Are you looking to improve your driveway?

We can provide you with a free quote for your driveway in Coventry, Birmingham, Leeds

5 Year Guarantee

Tel: 0800 3032559 | Mob: 07773 911552 | www.drives4u.co.uk

Keep up with all the latest news, sport and entertainment from around the area at www.leamingtonobserver.co.uk

www.coventryobserver.co.uk/editions
www.rugbyobserver.co.uk/editions
www.leamingtonobserver.co.uk/editions

The same paper you love on your **mobile, tablet** and **computer**

Motoring

www.carfinder247.co.uk

TELEPHONE 01926 451900 FACSIMILE 01527 584371



Aygo named one of UK best

THE TOYOTA Aygo and Suzuki Swift have been ranked as the most reliable used superminis by UK used car warranty provider Warrantywise.

In its latest Reliability Index, which uses data from 2022-25, Warrantywise has named the Toyota Aygo and the Suzuki Swift as the most reliable used superminis, each earning a score of 88.6 out of 100.

In a used car market shaped by rising costs and ageing vehicles, the supermini class is proving to be a haven for sensible buyers. These small cars offer low running costs, accessible pricing, and, in many cases, impressive longevity. From first-time buyers to city dwellers and downsizers, superminis are a go-to option for drivers who want dependable transport without the hefty bills – and this new data proves they're right to feel confident in their choice.

Warrantywise's rankings are based on the frequency of faults, average age and mileage at the time of repair, and how long those repairs typically take to complete. For consistency, Warrantywise has also categorised the super-

minis in line with Euro NCAP classifications (The European New Car Assessment Programme) – a widely recognised standard across Europe that helps ensure comparisons are made between like-for-like vehicles.

The Kia Picanto took third place, followed closely by the Citroën C1 and Peugeot 108. The Renault Clio also secures joint sixth place with the Ford KA. In eighth is the Hyundai i10, followed by the Dacia Sandero in ninth, and in joint tenth are the Hyundai i20 and MINI Cooper.

Antony Diggins, Managing Director of Warrantywise, said: "Our latest data backs up what many drivers already know – superminis are one of the safest bets you can make in the used car market. They're affordable, efficient, and, as our research shows, can be remarkably reliable. At a time when people are being more careful with their money, it's reassuring to know that you don't have to spend big to get a dependable car."

"With a number of these superminis not requiring major repairs until they're nearly a decade old, and many models showing excellent

cost-per-mile performance, they are an especially wise buy in today's market. That said, no vehicle is perfect, and issues can happen, so we always encourage drivers to protect themselves with a comprehensive warranty – especially as labour and parts costs continue to rise."

Over 60 per cent of the vehicles in the top ten don't show any faults until they're at least eight years old. Standouts include the Suzuki Swift and the Ford KA, averaging 8.7 years and nine years, respectively, before their first repair. It's proof that superminis – often seen as entry-level or short-term cars – are more than capable of delivering long-term value.

Of course, no car is immune to problems, and even high performers can hit drivers with an unexpected bill. Warrantywise's data shows that electrical issues account for over half of supermini repairs, with engine faults making up just over 30 per cent. Repair costs can vary widely, with average bills ranging from £420 up to £1,118, and as high as £1,297 to £9,224, depending on the model and nature of the fault.



DAVE'S ENGINE CENTRE
PRECISION ENGINE RE-MANUFACTURERS

PROBLEMS WITH YOUR ENGINE?
FREE Advice and Quotes

All Car, Agricultural and Commercial Engine Work

Full Machine Shop Facilities
Cylinder Head Re-facing
Crankshaft Regrinding
Pressure Testing
Reboring and Liner Fitting

Engine Parts at LOW PRICES

Does your **VINTAGE VEHICLE** need work?

Tel 01527 854968 / 07730 874527
Email : sales@engine-centre.co.uk
www.engine-centre.co.uk
Studley, B80 7AP

FREE LOCAL COLLECTION
for trade customers

Classified

TELEPHONE 01527 588688 FACSIMILE 01527 584371

PUBLIC NOTICES

PUBLIC NOTICES

Department for Transport

TOWN AND COUNTRY PLANNING ACT 1990

The Secretary of State gives notice of an Order made under Section 247 of the above Act entitled "The Stopping up of Highway (West Midlands) (No. 9) Order 2025" authorising the stopping up a southern and western part width of Palmer Lane at Hillfields in the City of Coventry. This is to enable development as permitted by Coventry City Council, under reference FUL/2021/1994.

Copies of the Order may be obtained, free of charge, from the Secretary of State, National Transport Casework Team, Tyneside House, Skinnerburn Road, Newcastle Business Park, Newcastle upon Tyne NE4 7AR or nationalcasework@dft.gov.uk (quoting NATTRAN/WMS/247/4891). They may also be inspected during normal opening hours at Coventry City Council, Transport & Infrastructure, Place Directorate, Friargate, Station Square, Coventry, CV1 2FL.

Any person who wishes to challenge the validity of the decision to make the Order may apply to the High Court within 6 weeks from 6 June 2025.

N Crass, Casework Manager

PUBLIC NOTICES

Warwickshire County Council

ROAD TRAFFIC REGULATION ACT 1984

Warwickshire County Council has made the following Temporary Traffic Orders:

BANK STREET, RUGBY

Order Effect: Road closed to vehicular traffic. Reason for Order: To enable pipe works.

Order Commences: 9 June 2025 for up to 18 months.

Anticipated Completion: 11 June 2025.

Access & Diversion: Albert Street, Church Street, Regent Street.

Contractor: Chevron TM Ltd, Tel: 03300 080 820.

D3241 LOWER HILLMORTON ROAD & C30 THE KENT, RUGBY

Order Effect: Road closed to vehicular from Kingsley Avenue to Featherbed Lane.

Reason for Order: Footway reconstruction and associated works. Work will be progressed in phases weekdays only 09.30hrs-15.30hrs.

Order Commences: 12 June 2025 for up to 18 months.

Anticipated Completion: 5 August 2025.

Access & Diversion: The Kent, School Street, Deans Road, A428 (Ashlawn Road, Hillmorton Road), B5414 Whitehall Road, Lower Hillmorton Road and vice versa. Access/egress to/from adjoining roads will be restricted whilst works are in progress.

Contractor: Balfour Beatty, Tel: 03452 415 302.

FOSSIE WAY, PRINCETHORPE

Order Effect: Road closed to vehicular traffic. Reason for Order: Works to lay ducting in carriageway.

Order Commences: 10 June 2025 for up to 18 months.

Anticipated Completion: 16 June 2025.

Access & Diversion: Fosse Way, London Road, A45, Leamington Road, Oxford Road and vice versa.

Contractor: Callan Connect, Tel: 01213 275 167.

MONKS KIRBY LANE, MONKS KIRBY

Order Effect: Road closed to vehicular traffic. Reason for Order: To safely enable works for replacement of a pole.

Order Commences: 10 June 2025 for up to 18 months.

Anticipated Completion: 10 June 2025.

Access & Diversion: Monks Kirby Lane, Coal Pit Lane, Brookhurst Lane, Sandy Lane and vice versa.

Contractor: M J Quinn, Tel: 01515 478 800.

SANDFORD WAY, DUNCHURCH, RUGBY

Order Effect: Road closed to vehicular traffic at the turning point/entrance to private drive.

Reason for Order: To enable duct laying works, 08.00hrs-17.00hrs.

Order Commences: 11 June 2025 for up to 18 months.

Anticipated Completion: 11 June 2025.

Access & Diversion: Vehicular travel along Sandford Way will not be affected.

Contractor: M J Quinn, Tel: 01543 547 118.

Warwickshire County Council proposes to make the following Temporary Traffic Orders:

PUBLIC FOOTPATH R105 IN THE PARISHES OF CHURCHOVER & NEWTON BIGGIN

Order Effect: Footpath closed to all traffic between Grid References X452277 Y279014 and X452413 Y278739.

Reason for Order: To avoid the likelihood of danger to the public while development works are in progress on or near to the footpath.

Order Commences: 23 June 2025 for up to 6 months.

Access & Diversion: Will be appropriately signed.

Contractor: Winvic Construction, Tel: 07541 688 149.

For all of the above temporary orders, pedestrian access to and egress from properties and land situated adjacent to the length of road to be closed will be maintained at all times. Vehicular access will be maintained where possible.

To report any problems with these works or for further details of our current & planned roadworks visit our website warwickshire.gov.uk/roadworksmap or call us 01926 412515.

S Duxbury, Director of Strategy, Planning & Governance, Shire Hall, Warwick CV34 4RL Date 6 Jun 2025

PUBLIC NOTICES

Warwickshire County Council

ROAD TRAFFIC REGULATION ACT 1984

Warwickshire County Council has made the following Temporary Traffic Orders:

STOCKTON ROAD, LONG ITCHINGTON

Order Effect: Road closed to vehicular traffic. Reason for Order: To safely enable works to reset air valve lid.

Order Commences: 9 June 2025 for up to 18 months.

Anticipated Completion: 10 June 2025.

Access & Diversion: Stockton Road, Southam Road, Coventry Road, The Green and vice versa.

Contractor: Chevron Traffic Management Ltd, Tel: 03300 080 820.

Warwickshire County Council proposes to make the following Temporary Traffic Orders:

CHURCH END, PRIORS HARDWICK

Order Effect: Road closed to vehicular traffic. Reason for Order: To safely enable works to install new boundary box and stop tap.

Order Commences: 26 June 2025 for up to 18 months.

Anticipated Completion: 27 June 2025.

Access & Diversion: Church End, Welsh Road, Wormleighton Road and vice versa.

Contractor: Chevron Traffic Management Ltd, Tel: 03300 080 820.

For all of the above temporary orders, pedestrian access to and egress from properties and land situated adjacent to the length of road to be closed will be maintained at all times. Vehicular access will be maintained where possible.

To report any problems with these works or for further details of our current & planned roadworks visit our website warwickshire.gov.uk/roadworksmap or call us 01926 412515.

S Duxbury, Director of Strategy, Planning & Governance, Shire Hall, Warwick CV34 4RL Date 6 Jun 2025

PUBLIC NOTICES

Warwickshire County Council

ROAD TRAFFIC REGULATION ACT 1984

Warwickshire County Council has made the following Temporary Traffic Orders:

OLD HOUSE LANE, CORLEY

Order Effect: Road closed to vehicular traffic. Reason for Order: Works to lay ducting in carriageway and verge.

Order Commences: 11 June 2025 for up to 18 months.

Anticipated Completion: 17 June 2025.

Access & Diversion: Tamworth Road, Church Lane and vice versa.

Contractor: Callan Connect, Tel: 01213 275 167.

For all of the above temporary orders, pedestrian access to and egress from properties and land situated adjacent to the length of road to be closed will be maintained at all times. Vehicular access will be maintained where possible.

To report any problems with these works or for further details of our current & planned roadworks visit our website warwickshire.gov.uk/roadworksmap or call us 01926 412515.

S Duxbury, Director of Strategy, Planning & Governance, Shire Hall, Warwick CV34 4RL Date 6 Jun 2025

PUBLIC NOTICES



PUBLIC NOTICE

The following notice is given for the closure of Whinfield (Rugby) Recreation Ground on Saturday 1 November 2025

For the purpose of the Rugby Round Table annual Fireworks Display Event.

Notice is hereby given that pursuant to the powers contained in Section 44 of the Public Health Acts Amendment Act 1890, as amended by Section 53 of the Public Health Act 1961, the Borough Council has resolved that Whinfield (Rugby) Recreation Ground will be closed to the general public on Saturday 1 November 2025 all day for the purpose of the Rugby Round Table annual Firework Display Event.

Dan Green
Acting Chief Executive
Rugby Borough Council

PUBLIC NOTICES

All your latest information on
Planning Proposals, Traffic
Notices, Goods Vehicle Operator
Licences, Licences To Sell
Alcohol and Probate Notices

PUBLIC NOTICES

Goods Vehicle Operator's Licence

GXO Logistics Drinks Ltd of Lancaster House, Nunn Mills Rd, Northampton, NN1 5GE is applying to change an existing licence as follows to keep an extra 10 goods vehicles and 20 trailers at the operating centre at 100 Scimitar Way, Coventry, CV3 4GB. Owners or occupiers of land (including buildings) near the operating centre who believe that their use or enjoyment of that land would be affected, should make written representations to the Traffic Commissioner at Quarry House, Quarry Hill, Leeds LS2 7JL stating their reasons, within 21 days of this notice. Representatives must at the same time send a copy of their representations to the applicant at the address given at the top of this notice. A Guide to Making Representations is available from the Traffic Commissioner's Office.

PUBLIC NOTICES

JEAN MARGARET SMITH (Deceased)

Pursuant to the Trustee Act 1925 any persons having a claim against or an interest in the Estate of the above named, late of 40 Groswood Avenue Coventry, CV5 9HL, who died on 27/04/2025, are required to send written particulars thereof to the undersigned on or before 07/08/2025, after which date the Estate will be distributed having regard only to the claims and interests of which they have had notice.

PUBLIC NOTICES

ANGIE PERBERTON (Deceased)

Pursuant to the Trustee Act 1925 any persons having a claim against or an interest in the Estate of the above named, late of 158 Verdale Crescent, Coventry, CV2 2FT, who died on 03/08/2017, are required to send written particulars thereof to the undersigned on or before 07/08/2025, after which date the Estate will be distributed having regard only to the claims and interests of which they have had notice.

PUBLIC NOTICES

ANGIE PERBERTON (Deceased)

Pursuant to the Trustee Act 1925 any persons having a claim against or an interest in the Estate of the above named, late of 117-119 New Union Street, Coventry, CV1 2NY, who died on 27/04/2025, are required to send written particulars thereof to the undersigned on or before 07/08/2025, after which date the Estate will be distributed having regard only to the claims and interests of which they have had notice.

PUBLIC NOTICES

ANGIE PERBERTON (Deceased)

Pursuant to the Trustee Act 1925 any persons having a claim against or an interest in the Estate of the above named, late of 117-119 New Union Street, Coventry, CV1 2NY, who died on 27/04/2025, are required to send written particulars thereof to the undersigned on or before 07/08/2025, after which date the Estate will be distributed having regard only to the claims and interests of which they have had notice.

PUBLIC NOTICES

EILEEN PERBERTON (Deceased)

Pursuant to the Trustee Act 1925 any persons having a claim against or an interest in the Estate of the above named, late of 158 Verdale Crescent, Coventry, CV2 2FT, who died on 03/08/2017, are required to send written particulars thereof to the undersigned on or before 07/08/2025, after which date the Estate will be distributed having regard only to the claims and interests of which they have had notice.

PUBLIC NOTICES

ANGIE PERBERTON (Deceased)

Pursuant to the Trustee Act 1925 any persons having a claim against or an interest in the Estate of the above named, late of 117-119 New Union Street, Coventry, CV1 2NY, who died on 27/04/2025, are required to send written particulars thereof to the undersigned on or before 07/08/2025, after which date the Estate will be distributed having regard only to the claims and interests of which they have had notice.

PUBLIC NOTICES

ANGIE PERBERTON (Deceased)

Pursuant to the Trustee Act 1925 any persons having a claim against or an interest in the Estate of the above named, late of 117-119 New Union Street, Coventry, CV1 2NY, who died on 27/04/2025, are required to send written particulars thereof to the undersigned on or before 07/08/2025, after which date the Estate will be distributed having regard only to the claims and interests of which they have had notice.

PUBLIC NOTICES

ANGIE PERBERTON (Deceased)

Pursuant to the Trustee Act 1925 any persons having a claim against or an interest in the Estate of the above named, late of 117-119 New Union Street, Coventry, CV1 2NY, who died on 27/04/2025, are required to send written particulars thereof to the undersigned on or before 07/08/2025, after which date the Estate will be distributed having regard only to the claims and interests of which they have had notice.

PUBLIC NOTICES

ANGIE PERBERTON (Deceased)

Pursuant to the Trustee Act 1925 any persons having a claim against or an interest in the Estate of the above named, late of 117-119 New Union Street, Coventry, CV1 2NY, who died on 27/04/2025, are required to send written particulars thereof to the undersigned on or before 07/08/2025, after which date the Estate will be distributed having regard only to the claims and interests of which they have had notice.

ANNOUNCEMENTS

FUNERAL DIRECTORS

Henry Ison & Sons Funeral Directors

A Funeral Plan to suit you



Plan ahead with a Choice Funeral Plan
Visit henryison.co.uk/choice

02476 997 811

Branches in Coventry (Binley Rd, Allesley Old Rd and Daventry Rd), Kenilworth and Leamington Spa



For terms, conditions, exclusions and limitations, visit choiceplan.co.uk/terms

SALES & WANTS

MISCELLANEOUS

RECLINER CHAIR

electric rise & recline £169 Manual recline chair £60 High seated chair £40 Can deliver 07703 925662

BEDS NEW Doubles

£95 Singles £59 King size £159. Second hand doubles £49 Singles £29 Fridges £49 Freezers £59 Can deliver 07703 925662

FOUR Victorian

balloon back chairs, VG condition. Plain dark green upholstery. £150. Telephone 01926 842623

ROTA VATOR

Qualcast 2HP, 4 Stroke Engine, Working order £60 Tel: 01527 876942

AWNING Isabella

Capri Lux 975 lightweight frame good condition groundsheet photos available £400 Tel: 07530531016

NIKE Air MX-720-818

Trainers, 'White Indigo Fog', UK Size 4, Hardly worn, £30. Tel: 0121 242 2513

YOUNG MAN

domestic 3m extending to 5.25m lader. £40. Tel: 02476 413633

WOODEN step

ladder. £20. Tel: 02476413633

WANTED

**WANTED: Vinyl Records CDs Cassettes

Vintage or New **

Seeking classic rock, jazz, indie and rare finds. Cash paid

Call or text: 07765 142354 Or 01527 893992

Or email: welston@live.com

Paul (Albatross & Doomed Records)

SERVICES

CONSERVATORIES & GLAZING

DOUBLE GLAZING REPAIRS

Locks, Hinges, Handles, Glass, Windows or Doors New Doors/Windows Also Supplied/Fitted
07973 200 623

GARDENING SERVICES

STUART'S GARDENING SERVICES

Landscaping & Tree Surgery Fencing, Slabbing, Turfing, Block Paving, Bases, Mowing, Decking, Roofing and Guttering. Mini-digger/Dumper Fully Insured, Registered carrier of waste. FREE ESTIMATES
02476 305992 • 07813 790889
01788 211064
www.stuarts-gardening-services.yolasite.com

HOME IMPROVEMENTS

HANDY MAN

If you're looking for a fast and reliable service

Then call Lenny

- Plastering • Plumbing • Fencing
- Gardening • Flooring • Kitchens
- Bathrooms • Carpentry • Flat pack furniture

• Tiling • Painting

02476 443 996

07794 784 266

NO VAT CHARGE

KITCHENS

S.W INSTALLATIONS

Kitchens & Bathrooms

FREE DESIGN & QUOTATION

QUALITY KITCHENS & BATHROOMS SUPPLIED & FITTED

PLUMBING, CARPENTRY, TILING, WORKTOP & DOOR REPLACEMENT

(Supply & fit, supply only or fit only)

LOCAL TRADESMAN 20YRS EXPERIENCE

NO JOB TOO SMALL

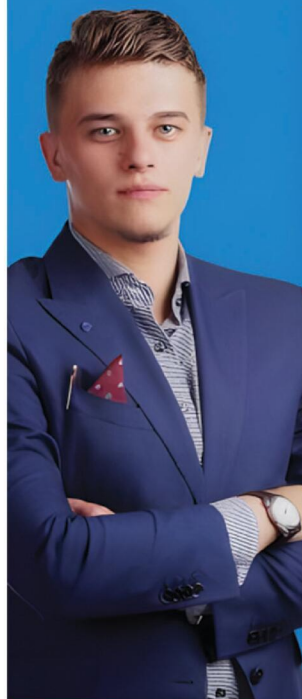
01926 773386 or 07971 684 353

Appointments

www.careerfinder247.co.uk

TELEPHONE 01527 588688 FACSIMILE 01527 584371

WE'RE HIRING: MULTI MEDIA ADVERTISING SALES ACCOUNT MANAGERS (OFFICE BASED AND / OR FIELD BASED)



Observer Standard

NEWSPAPERS | MAGAZINES | DIGITAL



We are looking to expand our Sales team across Warwickshire, Worcestershire and the West Midlands.

The ideal candidate will have a proven track record of success in Sales Account Management; and a strong understanding of the local media landscape - print and digital would be useful, but its not essential.

In this role, the successful candidates will be responsible for:

- Developing and maintaining current relationships with existing clients
- Identifying and making contact with new clients
- Identifying and closing new business opportunities

Skills required:

- A professional and friendly manner
- Excellent communication skills with ability to communicate on all levels
- Experience of sourcing and generating sales leads, over the telephone and face to face
- Ability to work independently and as part of a team
- Attention to detail

In return we offer a basic salary and on target earning in excess of £40k per annum, as well as a car allowance for Field Sales Account Managers

If you are interested in learning more about this really interesting role, please send your cv to: pat.bullivant@bullivantmedia.com

Bullivant Media Group publishes local Newspapers, Magazines and Websites across Warwickshire, Worcestershire and the West Midlands.

JUST CAN'T GET THE STAFF?

Bullivantmedia
GROUP LIMITED

We can offer you
**GREAT LOCAL COVERAGE
IN PRINT & ONLINE**

Contact
Caroline or Kelly

01527 **588625**
01527 **588749**

caroline.birkenhead@bullivantmedia.com
kelly.taylor@bullivantmedia.com

CRS LTD
Spring Lane South, Malvern WR14 1AT
ATF's are the **ONLY** legal way to scrap your vehicles
BUYERS
of all SCRAP Metals and SCRAP Vehicles
The **ONLY** authorised treatment facility in Malvern!
Best Prices Paid • Collection & Skip Drops Farm
Equipment, Copper, Brass etc. • 50 Ton Weigh Bridge
ID REQUIRED - 01684 578081
www.crs-malvern.co.uk

Observer SPORT



9 772040 128006
Published by Bullivant Media Group Ltd, Webb House,
Church Green East, Redditch, Worcestershire, B96 8BP
Printed by Newsquest, Newspaper House, Osney
Mead, Oxford, Oxfordshire, OX2 0EJ

VINYL RECORDS WANTED
Buying since 1978
Get your cash TODAY!
I will come to you
Phone PAUL
01527 893992 | 07765 142354

www.rugbyobserver.co.uk

BRINGING YOU ALL THE LATEST SPORTS NEWS AND VIEWS FROM THE AREA

Valley retain four and sign nine

FOOTBALL: GRANT Joshua insists he and his coaching staff are 'raising the standards' at the club after making a raft of new signings.

The club retained just four players from the side which suffered relegation from the Northern Premier League Midlands last term.

Only Liam Francis, Harrison Nee, Ryan Sahota and Dan Summerfield agreed to remain at Butlin Road next season.

The club remain locked in negotiations with last season's top scorer Trey Charles regarding a new deal.

Valley failed to agree terms with veteran midfielder Chris Clements.

A total of six players also departed Rugby following the expiry of their contracts - Hilton Arthur, Caine Elliott, Paul Hathaway, Ethan O'Toole, Josh Thomas and MJ Semahimbo.

Rugby offered fresh terms to Elliott and Thomas only for both players to search for a move higher up the pyramid.

And nine non-contract players have also left Butlin Road - Tyreece Brown, Jahvan Davidson-Miller, Kartell Dawkins, Micah Edwards, Ayo Lekuti, Jiah Medrano, Daniele Reka, Austin Sparkes and Lucas Stanley.

However, Joshua has acted swiftly to bolster his squad in time for the start of pre-season.

Joshua made 27-year-old midfielder Harry Cunningham his first signing as Valley boss.

Cunningham has previously played for Shifnal Town, Sporting Khalsa and Chasetown.

Full-back Bleu McNeil has joined Valley following a spell with AFC Rushden and Diamonds.

The 29-year-old previously signed for the club back in 2020 but never played a game due to the Covid-19 pandemic.

Young centre-back Ethan Hanson has also made the switch to Butlin Road.

The 23-year-old joins from Stourport Swifts where he won the club's player of the season award last term.

Joshua has also swooped to sign

Caine Elliott has left Rugby Town in search of a move higher up the pyramid. Picture by Martin Pulley.



20-year-old midfielder Paul Ibadon who he worked with previously at Lye Town.

And Joshua has again linked up with 20-year-old right back Nathan Kabeya.

Kabeya played under Joshua at both Lye and Coleshill Town.

Versatile midfielder Sam Tye has also agreed to join the club.

The 28-year-old scored 11 goals in

47 appearances for Joshua's Coleshill side last season.

And 22-year-old forward Sam Ellis has joined Rugby following spells with Coventry Copsewood, Coventry Sphinx and Sutton Coldfield Town.

Another of Joshua's former players, 25-year-old defensive midfielder Oliver West, has joined the club following a stint with Lye.

And 26-year-old winger Dilano Reid arrives from Sporting Khalsa.

Joshua said: "The recruitment drive shows no sign of letting up anytime soon and the level of player coming into the club is something that doesn't surprise me.

"The club itself attracts a certain level of player and if you add a proven group of staff to that, it's something that we won't get wrong.

"We're still three or four weeks away from pre-season so there's no panic and we won't be rushed into deals.

"Whoever we bring in will be a top fit for the club, not only on the pitch but off it - we're raising the standards of what it means to play for this football club."

CASHBROKERS

LEAMINGTON SPA

PAWNBROKING LOANS
SCRAP GOLD & SILVER
BUY BACK
JEWELLERY & WATCHES
COINS & BULLION

CASH PAID
FOR GOLD, SILVER,
COINS & BULLION



01926 258252

144 Parade, Leamington Spa, CV32 4AG

www.cashbrokersleamingtonspa.co.uk

