

**WANTED**  
**Motorcycles and Scooters**  
Any cc, condition or age,  
good prices paid  
07944 781 933 | 01926 257 643

# Not enough police to get the job done - Commissioner

## Calls for 'fairer funding' after report's criticisms

by **Ian Hughes**  
ian.hughes@bullivantmedia.com

WARWICKSHIRE Police simply does not have enough people to meet current demands on the force.

That was the conclusion of Warwickshire Police and Crime Commissioner Philip Secombe after the force was graded 'inadequate' for its response to 999 and 101 calls in its latest inspection report.

The main reason for the lowest grade was the time officers took to respond to calls received.

But the force was also graded 'good' - the second highest grading - in two areas, which included tackling antisocial behaviour, supporting victims and also recording crime data.

It was graded 'adequate' in three other areas and 'requires improvement' in a further three.

Mr Secombe, while acknowledg-

ing the report gave a rounded view of where Warwickshire Police was doing well and where it needed to improve, called for an overhaul of police funding nationally to provide a level playing field.

He said: "The force has been working to change the way it responds and investigates crime, with additional officers brought into teams. This is starting to show improvement, but clearly there is still some way to go before we can be fully sure of lasting improvement.

"Nevertheless, the report needs to be seen in its full context; many of the issues it has highlighted come down to an overall lack of people to meet the increased demand or process investigations more quickly and effectively.

"While the report makes clear that the force manages its finances well, the level of resource needed to fully meet this challenge is simply not available.

"Warwickshire Police receives

among the lowest amount of central government funding per head of population of any force and similarly ranks among the forces with the lowest numbers of officers compared to the population it serves.

"The report makes it clear that the force's reliance on overtime to try and deliver some of its services is unsustainable, both financially and in terms of the welfare of the workforce.

"There needs to be a fundamental review of the funding landscape for policing. The current reliance on local taxpayers to fund an ever-larger share of budget through Council Tax is increasingly unfair, particularly when there is a major disparity in what people pay in Warwickshire compared to other parts of the country.

"The formula on which central funding is allocated is massively out of date and leaves Warwickshire with a baked-in disadvantage that is only growing year on year."



Warwickshire Police and Crime Commissioner Philip Secombe, welcoming previous new recruits to the county's force, is calling for fairer police funding.



Tel: 0800 3032559  
Mob: 07773 911552  
www.drives4u.co.uk

Are you looking to improve or enlarge your driveway or patio?

We can provide you with a beautiful new patio or driveway in Coventry, Bromsgrove, Redditch, Solihull, Leamington, Kidderminster and Birmingham

5 Year guarantee

- We've designed and built just about every shape and size of driveway and patio you can imagine, so we will not be phased by your project.
- We strive to achieve 100% satisfaction and unlike other driveway companies, with us you pay absolutely nothing upfront.
- Give us a call and you could save upto £1000



Tel: 0800 3032559 | Mob: 07773 911552 | www.drives4u.co.uk

Championing the needs of Rugby residents since 1991 and delivering the news to you every week

# Theatre to open doors to beginners and experts

**AN AMBITIOUS project to involve more than 2,000 residents in creative arts activities and performances – culminating in a community festival later this month – has been launched by Coventry's Albany Theatre.**

by **Andy Morris**  
andy.morris@bullivantmedia.com

ence different art forms – including theatre, dance, music, puppetry, film and playwriting – and share their creations with hundreds more at the theatre's First Draft Festival on June 21 and 22.

Coventry residents of all ages have been invited to use the Albany's new performance and rehearsal facilities, designed to serve community groups, artists, and audiences across Coventry and the wider region.

Kevin Shaw, from the Albany Theatre, urged people to get involved in adult dance classes, intergenerational theatre and artist development workshops.

He said: "The response from the



Members of Arawak Community Trust, who will be taking part in Engage Inspire Create at The Albany Theatre.

community has been fantastic but there are still plenty of opportunities to get involved on the day and the buildup through some incredible workshops.

"This is about making the Albany a place where everyone can feel welcome and creative – whether they're stepping into a theatre for the first time or developing the next stage of their artistic career.

"The new and improved spaces give us a huge opportunity to open the doors wider than ever before,

and the festival in June will be a joyful celebration of everything created along the way by the talented people in and around Coventry.

"We can't wait to share the results of these sessions at our festival weekend and want to thank our incredible community partners for their hard work and enthusiasm in bringing Engage Inspire Create to life."

The Albany's professional workshop strand will include masterclasses hosted by professionals in

the field for emerging artists, a special playwriting workshop with Coventry-born playwright Alan Pollock (One Night in November), and affordable artist development opportunities such as Studio Hire for a Fiver.

The theatre is also inviting freelance workshop leaders and facilitators to apply to help deliver the programme.

Visit [www.albanytheatre.co.uk](http://www.albanytheatre.co.uk) for more information, and to book festival tickets or workshops.

**The British Normandy Monument.**

PHOENIX COACHES

**Superb Value**  
**£469.00**  
Per person  
Single Supplement  
£150

**The D Day Landings in Normandy**  
**Ibis Styles Ouistreham**  
**5 Days / 4 Nights**  
**15th August—19th August 2025**

**Price Includes :-**

- All Coach Travel
- Day Excursions
- 4 Nights Accommodation
- Breakfast
- Entrances To Normandy Museums
- English & American Cemeteries
- 1 Evening Meal In Restaurant

Pegasus Bridge Museum

The Merville Batterie

British Cemetery at Ranville

Normandy American Cemetery

Museum Debarquement

**FOR MORE INFORMATION AND BOOKINGS CONTACT**  
**Jason Or Gemma On 024 76 350 811**



Winning smiles – Kenilworth deputy mayor Alison Insley, Blythe Liggins senior partner David Lester, women's race winner Frankie Gibbs, men's race winner Callum Hanlon, Kenilworth Rotary Club president Maurice Holden and Kenilworth MP Sir Jeremy Wright.

## Callum runs to fourth title in a row

CALLUM Hanlon was the man to beat in the Two Castles Run at the weekend.

But no one was able to as the Leamington Cycling and Athletics Club member made it four wins on the trot.

Around 4,000 runners took part in the ever-popular 10km run between Warwick and Kenilworth castles on Sunday.

In the men's race Hanlon was followed across the finishing line by Andy Lawrence in second place and Rhys Doherty in third.

Frankie Gibbs secured first place among the female runners, with Kelly Edwards in second and Natasha White in third.

The annual run is organised by the Kenilworth Runners in conjunction with Kenilworth Rotary and Leamington Cycling and Athletics Club.

Richard Clarke, race director for the Kenilworth Runners, said: "We'd like to thank our 4,000 runners for being part of the big day and also thank everyone who came out to cheer them

along. The runners gave it their all and the support from people along the route spurred them all on to keep going."

The run was sponsored for the 20th year by Leamington law firm Blythe Liggins.

Donna Bothamley, partner at Blythe Liggins, said: "There's always a great atmosphere along the route and at the finish line at Kenilworth Castle, and our team were giving out water to runners as they crossed the finish line."

PUBLIC NOTICES

For all your latest information on  
**Planning Proposals, Traffic Notices,  
Goods Vehicle Operator Licences,  
Licences To Sell Alcohol and Probate Notices...**

See  
page  
**30**

# MP urges county council to improve bus services

by **Andy Morris**  
andy.morris@bullivantmedia.com

## RUGBY'S MP has called on Warwickshire County Council to improve bus services in the town.

John Slinger has written a public letter to Warwickshire County Council urging improved services to and from the Hospital of St Cross, a shuttle service linking Rugby train station to the town centre, and increased frequency.

Mr Slinger has asked the council how it will use powers proposed under the government's Buses Bill to deliver better bus services.

In his letter, he said: "I have many messages from constituents telling me that they are at the end of their tether regarding the state of the bus services they rely on in Rugby.

"I urge you [the county council] to work closely with district authorities, charities, NGOs, community groups, and local councillors to make full use of the new powers now available to improve local transport.

"I ask that you focus on delivering routes and services that meet the needs of vulnerable residents, including young people – especially those who cannot afford a car – and older people, who often tell me that inadequate bus infrastructure limits



John Slinger MP has called on Warwickshire County Council to improve bus services in Rugby.

their independence and ability to live fully."

The Buses Bill, introduced to Parliament this month, will expand the power to 'franchise' bus services to all local authorities, giving them greater control over routes, fares and service levels and reversing the ban on publicly-owned bus companies.

Mr Slinger said the legislation would 'end the postcode lottery of Britain's broken buses'.

He added: "I know what mat-

ters to residents; I too want to see Warwickshire County Council take these powers being given to them by the government and use them to improve services locally.

"I am campaigning for improved hospital connections, a shuttle linking Rugby station to the town centre, and increased frequency.

"Rugby deserves better than the current appalling postcode lottery of bus quality. I'm concerned that the Reform-led county council is only now appointing a cabinet member

for transport – an issue that affects everyone in our borough. It shows exactly where their priorities lie.

"People across Rugby are tired of unreliable, overcrowded and infrequent bus services holding them back from opportunity."

Mr Slinger is continuing to run a survey for residents to suggest ways of improving local bus services. Visit <https://survey.labour.org.uk/betterbuses> to take part.

Warwickshire County Council has been contacted for comment.



Tyler Kempton is wanted for failing to appear in court.

## Warning over wanted man

POLICE have warned the public not to approach a wanted man from Rugby.

Tyler Kempton, 27, is wanted for failing to appear in court.

Kempton is around 5ft 8in tall and has ginger hair. Police advised anyone who sees Kempton to call 999 immediately and not to approach him.

Anyone who knows where he is or can help to locate him is asked to report information via [www.warwickshire.police.uk/ro/report](http://www.warwickshire.police.uk/ro/report) or call 101, or Crimestoppers anonymously on 0800 555 111.

## Appeal to find missing Piotr

POLICE are asking for the public's help to locate a Rugby man who has been missing for nearly two weeks.

Piotr, 41 has been missing from his home since 1pm on Saturday May 31.

Piotr is a 5ft 7in tall white man with blonde hair. He is believed to be wearing a black T-shirt. He has tattoos over his arms and chest.

Anyone who sees Piotr is asked to call police on 999, citing incident 375 of June 6.

Anyone who knows where Piotr is or can help to find him is asked to report information online via [www.warwickshire.police.uk/report](http://www.warwickshire.police.uk/report) or by calling 101.



Piotr has been missing from his Rugby home since 1pm on Saturday May 31.

## Eight suspects in reported attack

POLICE are appealing for witnesses after a man was allegedly assaulted in Rugby town centre.

Police said around eight men reportedly attacked a man in Market Place between

5.30pm and 6pm on Friday May 30, causing injuries to his neck and back.

One of the suspects, who are described as being in their late 30s, reportedly hit the victim with a belt.

Anyone with information is asked to report it via the website at [www.warwickshire.police.uk/ro/report/ocr/af/how-to-report-a-crime](http://www.warwickshire.police.uk/ro/report/ocr/af/how-to-report-a-crime) or call 101, quoting incident number 284 and the reference date of June 2.

MALLORY COURT

COUNTRY HOUSE HOTEL & SPA

*Acoustic Afternoons with Barton Hollow*

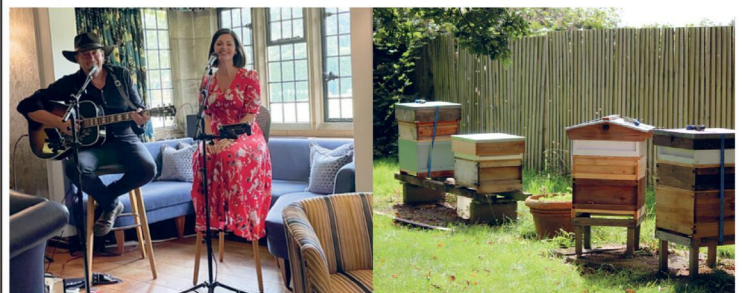
*Bee Experience*

Immerse yourself in the magic of live music as these talented musicians bring warmth and harmony to the afternoon...

Join us for a unique bee experience with Beekeeper Lottie Buckland, with honey tasting, a visit to our hives, a honey-inspired cocktail and a two-course honey-themed lunch.

2:45pm - 5:00pm  
May - September (Selected Sundays)

Saturday, 7th June | £75.00pp



T: 01926 330214 | [INFO@MALLORY.CO.UK](mailto:INFO@MALLORY.CO.UK)  
Harbury Lane, Leamington Spa, CV33 9QB

**Tell us your news.**  
**Email [editor@rugbyobserver.co.uk](mailto:editor@rugbyobserver.co.uk)**

# Davy leads MND team on 330-mile challenge

**AN ADVENTUROUS man from a village near Lutterworth who was diagnosed with motor neurone disease (MND) last year is leading a team of his friends on a gruelling fund-raising bike ride across the breadth of the UK.**

David Scott, from Broughton Astley, and a team of 56 friends from the Lutterworth area set off from Barmouth in Wales on Thursday (June 12) on a 330-mile two-day cycle to Great Yarmouth.

They will spend two days on the road to raise money for the MND Association.

Since his diagnosis, David has dedicated much of his life to raising vital funds and awareness of the devastat-

by **Andy Morris**  
andy.morris@bullivantmedia.com

ing disease. Last October, he and a team of 56 friends, family members and supporters climbed the three Yorkshire peaks – Pen-y-ghent, Wharfedale and Ingleborough – in just one day to raise money for the MND Association, the Matt Hampson Foundation and the Leicester Organisation for the Relief Of Suffering Hospice (Loros).

David also helps to raise awareness of MND by writing a blog about his personal experiences.

The fund-raising adventures have been organised by David's close friend, Justin Middleton.

Justin said: "To offer my support during these difficult times, a team of great friends and I have been putting together challenges and events to help raise much-needed funds for the charities which have been supporting Davy during his MND journey."

"Davy is a lovable character, and this can be seen by how many people have joined us on the challenges."

"Some of the more experienced riders will be doing the whole challenge on their own, and other less experienced riders are doing it as a relay team."

"This event has been put together to help raise awareness and much-needed funds for the MND Association."

Alistair Laing, the MND Association's Relationship

Fundraiser for the East Midlands, said David was an extraordinary person.

He added: "He has done so much to raise money and awareness of motor neurone disease – a condition which affects more than 5,000 people in the UK at any one time."

"This incredible challenge will do even more to help people living with MND and their families and we couldn't be more grateful for the team's support. We wish everyone involved the very best of luck."

Visit [www.mndassociation.org](http://www.mndassociation.org) for more information about MND and the MND Association.

Visit <https://tinyurl.com/mrxrkac8> to donate to David's fund-raiser.



David Scott, who is living with MND, and his close friend Justin Middleton, who has organised the challenge.



Orchard Road car park in Broughton Astley.

## Council wants your views on future of its car parks

RESIDENTS in the Lutterworth area are being asked for feedback to ensure car parks meet the needs of residents, visitors, and people who work in the district.

Harborough District Council (HDC) is inviting views on its car parks to help shape future developments.

The council wants to know if the right car parks are in the right places, if parking should be self-financing, if rural car parks should be offered to parish councils, and more.

Coun Darren Woodiwiss, HDC Cabinet lead for Environmental and Climate Change, said: "Effective management of park-

ing can contribute to a vibrant and sustainable local economy and car parks are often the first impression that visitors have of a town. We'd like to hear how people feel about our car parks, including the current tariff structure and whether we have the right approach to environmental opportunities.

"We will be installing new payment machines later this year and we hope that feedback via this consultation will help us to manage other future improvements to our car parks."

Visit [www.harborough.gov.uk/consultation/info/162](http://www.harborough.gov.uk/consultation/info/162) to take part in the consultation, which runs until 9am on Monday July 28.

entertainers presents

**BRAND NEW SHOW FOR 2025**

SCAN & BOOK

**THE MAKINGS OF A MURDERER 2**

THE REAL MANHUNTER

WITH SENIOR INVESTIGATIONS OFFICER COLIN SUTTON  
WHO CAUGHT SERIAL KILLER, LEVI BELLFIELD

**THE ALBANY theatre**

**FRI 20 JUN 7.30PM**

02476 99 89 64 - [ALBANYTHEATRE.CO.UK](http://ALBANYTHEATRE.CO.UK)  
ALBANY ROAD | COVENTRY | CV5 6JQ

**KENILWORTH**

**Kenilworth Tennis Squash & Croquet Club**

Crackley Lane,  
Kenilworth CV8 2JS

01926 852673

**Open 7 days a week**

- Beginners courses – Coaching
- Social play – Mix ins
- Competitions – Juniors
- Club nights – Social events

**Affordable plans!**

- Pay monthly
- Pay annually
- Pay and play!

**JOIN US!**

- Tennis
- Padel
- Squash
- Croquet
- Cafe/Bar

Family Oriented  
All Welcome  
Ample free parking

Make lasting friendships and memories!

[www.ktscc.co.uk](http://www.ktscc.co.uk)    [membership@ktscc.co.uk](mailto:membership@ktscc.co.uk)

# Ben's fundraising legacy is set to live on after 16-year battle

A WIDOW has vowed to continue her late former husband's fundraising legacy following his death after a long and tireless battle with an aggressive brain tumour.

Former Observer journalist, Ben Lindon died 16 years after being diagnosed with an aggressive oligodendroglioma when just 29 years old.

Ben's former wife Kate Lindon is continuing his work with the charity Brain Tumour Research to raise awareness of the disease that has left their children without a father.

The couple have two children - 13 year-old Martha and a ten year-old Sid - both born after doctors had told Ben it would be unlikely he would be able to have children, owing to his condition.

Kate said: "Ben fought a brave battle, raising awareness and support by raising more than £10,000 for Brain Tumour Research.

"Ben wanted others to have a fighting chance, and he knew fundraising was his way of trying to ensure other families don't have to experience what he went through."

Ben, who worked for the Leamington, Coventry and Rugby Observers, was first rushed to Warwick Hospital after suffering seizures and a stroke while jogging in March 2008. Further deterioration resulted in a number of falls leaving Ben reliant on a wheelchair



Former Observer journalist, Ben Lindon has died after a 16 year battle with an aggressive brain tumour. He's pictured here at Land's End, on one of his many fundraising challenges which helped raise over £10,000 for Brain Tumour Research.

and mobility scooter to get around. He committed himself to a series of increasingly demanding challenges to raise awareness and funds for Brain Tumour Research.

He undertook everything from the Three Peaks Challenge to the London Marathon, and even a 1,000-mile bike ride from John O'Groats to Land's End.

Kate said: "Despite the fatigue

and toll of ongoing chemotherapy, he kept pushing forward."

Ben's tumour was too risky to surgically remove due to being close to his cerebral cortex, which controls motor functions such as movement and speech.

Surgery would have put Ben at risk of dying in the operating room or suffering a severe stroke and paralysis. Instead, Ben underwent

120 cycles of radiotherapy, and chemotherapy - thought to be the most given to any patient in the UK.

In 2017, during Ben's 100th chemo cycle, he kayaked 100 miles along the River Wye, supported by mementos from his children.

Ben, originally from Shipston, not only became a tireless fundraiser, but also a passionate advo-

cate, helping present a landmark report to Parliament on the cost of brain tumours, both personal and financial.

Kate added: "He made a powerful and immediate decision, to fight not just for his own health, but for the wider cause.

"Instead of allowing the diagnosis to define or defeat him, Ben chose to lead a healthier life, physically and mentally, and to focus on others who were also suffering."

Katrina Jones, head of community and digital fundraising at Brain Tumour Research, said: "Ben was an extraordinary individual whose courage, determination, and tireless fundraising inspired everyone who knew him.

"His legacy will live on in the lives he touched and the progress he helped make towards finding a cure. We are deeply saddened by his passing and profoundly grateful for everything he did for our community."

Visit [braintumourresearch.org](http://braintumourresearch.org) donate to honour Ben's legacy.

## OFTEN IMITATED BUT NEVER EQUALLED

While all costs are going up - OURS ARE STAYING DOWN

Due to our customer friendly services of No Door Salesmen, No Showroom and little overheads



NEW FLUSH WINDOWS

BEAUTIFUL COMPOSITE DOORS Fully fitted Competitive Prices



UPTO 30% OFF ALL WINDOWS



ALL PRODUCTS HAVE A 10 YEAR INSURANCE BACKED WARRANTY

BILL MOORE'S WINDOWS AND DOORS A NAME YOU CAN TRUST

1 Brookside Close, Stratford-upon-Avon, Warwickshire CV37 9PL

01789 415171 • 07729 689239 • [www.billmooreswindowsanddoors.co.uk](http://www.billmooreswindowsanddoors.co.uk)



	Adult	Child		Adult	Child
<b>June</b>			<b>August</b>		
16th Bakewell.....	£25.00	£20.00	2nd Blackpool.....	£29.50	£24.50
24th Pub Lunch.....	£30.00	£24.00	5th Chester.....	£27.00	£22.00
<b>July</b>			14th Carden Market.....	£29.00	£24.00
5th Skegness.....	£27.50	£22.00	16th Great Yarmouth.....	£29.50	£24.50
8th Melton Mowbray.....	£25.00	£20.00	19th Cotswolds Market & Broadway		
12th Wellesbourne Market ...	£15.00	£12.00		£27.00	£22.00
19th Southend-on-Sea.....	£29.50	£24.50	21st Blist Hill.....	£41.00	£29.00
<b>July</b>			27th Sandringham House.....	£50.00	£45.00
29th Bury Market.....	£27.00	£22.00	30th Skegness.....	£27.50	£22.00
31st Weston-super-mare.....	£27.00	£22.00			

**Scarborough - The Boston Hotel 28th July-1st August 2025**  
**5 Days/4 Nights £375 Per Person**

Price Includes All coach travel, 4 Nights accommodation, evening meal & Breakfast, Day excursions, Steam train & Cream Tea

**Paignton - Queens Hotel 8th-11th August 2025**  
**4 Days/3 Nights £325 Per Person**

Price Includes All coach travel, 4 Nights accommodation, evening meal & Breakfast, Day excursions, Boat trip around Dartmouth & Visit to Brixham, Bicton park Botanical Gardens & Cream Tea

**Normandy- Ibis Styles Ouistreham 15th-19th August 2025**  
**5 Days/4 Nights £496 Per Person**

Price Includes All coach travel, 4 Nights accommodation, breakfast, entrance to Normandy Museums, English & American Cemeteries, 1 evening meal in a Restaurant

[www.phoenixcoaches.org.uk](http://www.phoenixcoaches.org.uk)

Tel No 02476 350 811. 50 Southfield Close, Nuneaton. CV10 OBE

# Hotel collects top UK award for hospitality

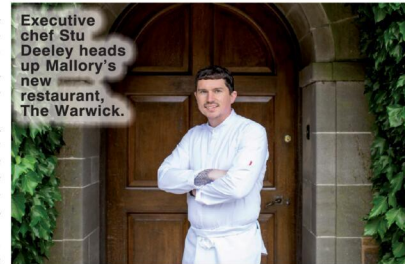
**A HOTEL in Leamington has been named the best in England by the country's tourist board.**

Mallory Court Hotel and Spa clinched the gold award in the Large Hotel of the Year category at the VisitEngland Awards for Excellence.

The four AA red-star venue made it through to the national awards after being named Best Large Hotel in the West Midlands Tourism Awards earlier this year.

The VisitEngland Awards for Excellence have been championing the best in England's tourism industry for more than three decades and celebrate quality, innovation, best practice and exceptional customer service.

It comes as the hotel continues to excel across the board after landing a gold certification from Green Tourism for its sustainabil-



ity credentials – including recycling 100 per cent of its waste, alongside the hotel's 90-day staff retention rate reaching 97 per cent thanks to a scientific-inspired staff welfare 'Happy Hub' initiative.

The hotel's efforts to incorporate its ten-acre gardens into each customer's stay has also proved a hit – from suggested sensory walks around the rose and herb gardens, to sampling home-grown produce in menus and drinks.

Mallory Court's owners, Eden Hotel Collection, were

also recently named the AA's Small Hotel Group of the Year.

Josefine Blomqvist, general manager at Mallory Court, said: "The VisitEngland Awards for Excellence are the cream of the crop when it comes to hospitality awards – so

I am extremely proud of this recognition for my team. "It is a really exciting time for our property, underlined by this award win.

"Not only is our recent hotel refurbishment proving popular with our guests, but the arrival of our executive chef Stu Deeley – who is a former MasterChef winner – is also set to elevate our fine dining experience to a new level with our new restaurant, The Warwick."

Visit [www.mallory.co.uk](http://www.mallory.co.uk) for further details.

## INTERNATIONAL METALS & CABLE RECYCLING LTD

**We purchase all Ferrous and Non Ferrous Metal Batteries and Cables**

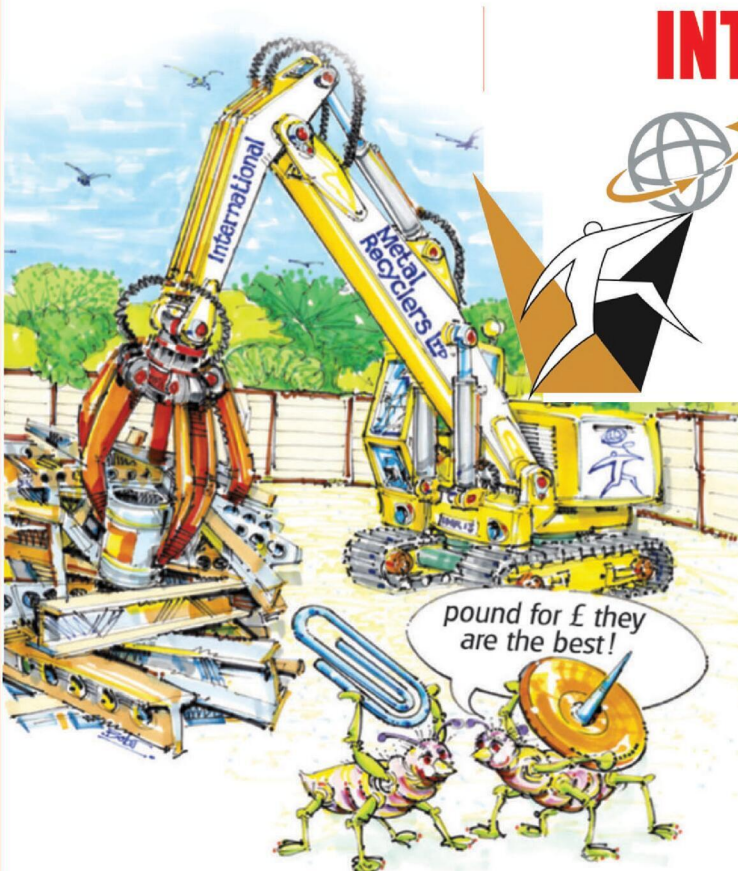
**Collection Service Available**

**Long Marston Road, Long Marston, Stratford Upon Avon, Warwickshire, CV37 8AQ**

**01789 721 288**

**david@imrltd.co.uk**

**Open Mon/Fri - 8am - 5pm**



# Drug farm used former city club

THE MASTERMIND of an organised crime group which ran a cannabis farm at a disused nightclub in Coventry has been found guilty.

Roman Le, 37, from Birmingham, headed a gang which operated at least eight farms in residential and commercial properties across the Midlands, North West and north Lincolnshire.

Le bought or rented the properties by posing as a property developer, working with co-defendants Yihao Feng, 29, from Manchester, and David Qayumi, 36, from Birmingham, to source and operate the drug farms which together were capable of making millions of pounds worth of cannabis.

They included the former Big Bamboo nightclub in Trinity Street, Coventry, (pictured) which police raided in 2020 after National Crime Agency (NCA) investigators watched Le visit the building.

They had to smash through several reinforced doors to get inside, where they found around 1,500 cannabis plants worth more than £1million.

Officers also recovered sophisticated plantings, growing and irrigation equipment, valued at around £150,000.

The electricity supply at the property had been bypassed, with the equipment inside directly and illegally connected to the commercial supply from the street outside.

The trio were also linked to cannabis farms in the Midlands, North West and north Lincolnshire, many of which were staffed by Vietnamese or Albanian illegal migrants, some of whom police believe were likely being



exploited because of their immigration status.

Feng and Qayumi pleaded guilty to conspiring to produce cannabis, but Le denied the charge, claiming he had no knowledge that the properties were being used for cannabis grows.

Following an eight-day trial at Birmingham Crown Court, he was found guilty. Le was remanded in custody, and all three men will be sentenced on July 4.

NCA Branch Commander Kevin Broadhead said: "Roman Le claimed he was a legitimate property developer, but in actual fact he fronted an organised crime gang capable of producing millions of pounds worth of cannabis."

"While he and his co-conspirators oversaw these operations, the actual people put to work in them were often exploited migrants who had been smuggled into the UK."

"Working with policing partners, we were able to prove these men were involved a sophisticated criminal enterprise."

## Spring Arrives

at the garden lover's garden centre

**Harefurlong Nurseries**  
www.farnboroughgardencentre.co.uk

A traditional garden centre that focuses on providing quality plants, garden products, homeware and gifts

national  
*Garden Gift*  
voucher

AQUATIC  
PLANTS

TUB & BASKET  
PLANTS

VEGETABLE  
PLANTS

SUMMER  
BEDDING

Treasured  
*Teddies*  
AT  
FARNBOROUGH GARDEN CENTRE

Come & visit our Treasured  
Teddies shop & see our  
massive selection of cuddly  
collectables & furry friends  
including especially  
loveable limited editions and  
everyday huggables

### A world of Choice

**OPEN 6 DAYS  
A WEEK**  
**Tues-Sat 9-5.30pm**  
**Sun 10.30-4.30pm**  
**Open Bank Holiday  
Mondays**

**On A423 Southam Road,  
Nr Farnborough, Banbury, OX17 1EL**  
**Tel 01295 690479**

[customersales@farnboroughgardencentre.co.uk](mailto:customersales@farnboroughgardencentre.co.uk)

**WHERE THINGS FOR YOUR GARDEN  
WON'T COST YOU THE EARTH**

**James Hirons**  
*Makes every day worth living...*

**Trustee Opportunity – can you enrich our existing board of trustee volunteers in a rewarding role?**

James Hirons is a registered dynamic charity focusing on providing exceptional care to our residents and their families to "Make everyday a day worth living". We are currently rated "good" following assessment by the Care Quality Commission.

We are looking for at least two trustees; ideally one with a legal background and one with a marketing background. Other interested parties with different skills and knowledge are most welcome.

James Hirons is a small but well-funded independent care home based in a pleasant area of Leamington Spa. We have been providing quality care since 1953. The Trustee team provide essential support to the Management and staff of the Home and this opportunity offers a rewarding and enjoyable experience.

All applications must meet the requirements of trustees in line with the Charity Commission requirements, and a full and detailed induction and training will be provided. (**Website: www.jameshirons.org.uk**)

**Key responsibilities**

- To play a key role in the strategic vision and direction of our charity.
- To understand legal and financial responsibilities of board members.
- To act as an enthusiastic and positive ambassador for the Home, advocating on our behalf and representing us within the local community.
- To proactively support our commitment to equality.
- To attend board meetings (normally 6 per year, held on a weekday morning) and take part in sub-committees as appropriate.
- To support, and in some cases lead, relationships with key stakeholders and partners and build network on behalf on the charity.

**Person specification**

- Be an effective communicator and able to work constructively in a small team.
- Have a commitment to caring, quality of care and services.
- A knowledge and/or an understanding of what it means to be a trustee (training will be given to those who have not been on a board of trustees before)
- Experience on, or working closely with, boards or committees, is useful but not essential.

If you would like to be considered; please send your CV to:  
The Chair of the Trustees, James Hirons, 53 Lillington Road, Leamington Spa, CV32 6LD  
Or email [barbara.beal@jameshirons.org.uk](mailto:barbara.beal@jameshirons.org.uk)

For an informal chat about the role, do call our Chair; Barbara Beal on – 01926 422425  
**Closing Date end June 2025**

# Museum rated 'outstanding' by VisitEngland

by Philippa Mingins

**MARKET Hall Museum in Warwick has been given the official thumbs up.**

The town centre museum achieved a standout rating following a recent visit from VisitEngland.

The museum, run by Warwickshire County Council's (WCC) Heritage and Culture Warwickshire service, received a mystery visit during a busy event during the Easter holidays.

The assessment by the 'mystery shopper' was part of the VisitEngland Quality Attraction Scheme, a national scheme that assesses museums, heritage sites and visitor attractions across England.

The assessor was impressed by the standards of service they experienced during their visit with the museum achieving an overall score of 86 per cent.

There were also standout individual scores for specific areas of the museum experi-



Market Hall Museum was given the thumbs up from VisitEngland.

ence including staff – 86 per cent, attraction – 90 per cent, cleanliness – 96 per cent and retail – 95 per cent.

A score of 60 per cent is a pass, more than 80 per cent is excellent with 90 per cent plus very rare.

WCC's heritage spokesperson Ayub Khan said: "We are delighted that the Visit England mystery shopper was so complimentary of their recent visit to Market Hall museum.

"Their visit coincided with a very busy Fossil Hunter event so the museum was really buzzing. This meant a really busy day for the Market Hall team, but they took it in their stride and continued to deliver an excellent customer experience which was evidenced in our final overall rating of 86 per cent."

For more details about Market Hall Museum visit [heritage.warwickshire.gov.uk/markethallmuseum](http://heritage.warwickshire.gov.uk/markethallmuseum).



Visitor services assistant Aimee Stanley takes a look around the Unlocking Collections exhibition. Picture by Marcus Mingins 2125006MMR © Bullivant Media

## New exhibition unlocks the past

THE STORIES behind the collections at Market Hall Museum in Warwick are told in a new exhibition.

Unlocking Collections focuses on the museum's 'Founding Collection' - the name for the items acquired by the Warwickshire Natural History and Archaeological Society (WNHAS) during the 19th century.

Much is known of the scientific value of the collections but the new exhibition aims to uncover the social-historical context of the objects amassed by the society, as well as shed light on the committee members themselves

- their interests and their reasons for collecting.

Themes of the exhibition include the beginnings of the society, collecting contexts, the role of women within the society, the society's hidden voices, and collecting today.

The WNHAS was established in 1836, a time of rising interest in the natural sciences for the professional and middle classes of England. The new sciences were underpinned by classification schemes, revealing a true order and proper scientific understanding of nature.

Archaeological investigations and antiquarian col-

lecting created a growing collection of material from across the world, including Greece, Egypt, and India, mainly reflecting Britain's growing influence and Empire.

Claudia Davies, collections assistant for the Unlocking Collections project, said: "This is the first time we have co-curated an exhibition at Heritage and Culture Warwickshire. It has been a massive learning curve but a very rewarding experience. This exhibition would not have been possible without the support and contributions of our volunteers."



## Helping You Support Someone *Vulnerable*

Expert legal advice

when it matters most

Talk to our trusted legal advisers *today*

0121 733 8000  
wilkes.co.uk

Your legal partner for all things in *life*.

# FREENOW taxi app launches in Coventry *getting around just got easier!*

**To celebrate the launch, FREENOW is offering a 50% discount on the first two trips**

FREENOW, a leading taxi app, is now available in Coventry through a partnership with Lewis Taxis, a local favourite for over half a century. The FREENOW app offers a convenient, reliable and cost-effective way to book a taxi in just a few clicks.

Millions of passengers across Europe already use FREENOW. The app is available in over 150 major cities, including capitals like London, Edinburgh, Berlin, Madrid, and Athens, offering efficient and reliable taxi services to both residents and visitors.

The company plans to continue expanding across the UK and Europe, making it even easier to book a taxi wherever you are travelling for work or leisure.

### Exclusive discount

To celebrate its arrival in Coventry, FREENOW is offering an exclusive

discount for new users in the city. New users can receive 50% off the first two trips by inputting the promo code 'COVENTRY' into the FREENOW app. Experience FREENOW for yourself and discover its popularity!

### Get there faster

Taxis can travel in bus lanes and they will take the shortest route from A to B possible, keeping time travelling to a minimum, getting you to your destination as quickly as possible.

### Prebook your taxi up to 90 days in advance

FREENOW has a 'Prebook' feature that allows you to schedule a ride from 20 minutes up to 90 days in advance, so you can check that off your to do list and focus on what really matters.

### Your safety comes first

When it comes to travel, FREENOW puts safety front and centre.

When booking a cab, passengers receive information about their driver and vehicle and can utilise safety features such as



# FREENOW

'share your trip', which allows them to share their journey with friends or family, so they know where the passenger is and when they arrive at their destination.

So, whether you are coming back from a night out, commuting to work or taking a trip with your family, you can rest assured you're well cared for.

### **Danny O'Gorman, UK General Manager at FREENOW, says:**

"We're excited to make getting around Coventry easier and more convenient for everyone. FREENOW is always looking to boost connectivity within and between regions - we are pleased to be able to expand into Coventry. As a city, its growing population and increasing economic growth drives greater demand for transport and we are well positioned to meet those increasing needs."

### **Mohammed Wasim, Greater Coventry Area Manager at Lewis taxis, said:**

"We are delighted to partner with FREENOW. We believe this partnership will help drivers in Coventry increase their earnings while giving passengers a convenient and efficient way to book their taxis, ultimately providing better transport services in the city."



For more information visit **FREENOW** at [free-now.com/uk/](https://free-now.com/uk/) or download the **FREENOW** app for iOS or Android.



# A slice of appreciation

# Emotional dream is next offering

GRATEFUL residents and staff at a Rugby care home have heaped praise - and cake - on local firefighters and nurses.

On International Firefighters' Day, Overslade House's Head Chef Corey Leake, visited Rugby Fire Station's Red Watch with cakes, to thank them for their hard work on behalf of the home's residents.

Resident Joyce said: "They do an amazing job and we couldn't be without them. Tell them to come for a cup of tea - we will look after them."

And on International Nurses Day, residents and relatives gave cards and flowers to nurses at the care home, and Corey baked another special cake.

General Manager Violetta Baesu said: "Our nurses are hard-working, dedicated, and passionate about caring for others, and that compassion and commitment has shone through even more over the past year."

"They continue to work tirelessly, and I'm proud of the professionalism and duty of care



they uphold. It's nice to take this time to show our appreciation in return.

"It is also lovely to celebrate our residents who were themselves nurses or firefighters, and thank them for all the hard work they did during their careers."

Elly, who lives at Overslade House, said: "I used to be a nurse and I know how tiring the job is, even more so these days - there is so much more to think about now than back in my day."

"The staff here spend so much time and energy looking after us, so it's been lovely to show just how much we appreciate them. They do a smashing job."

**ABOVE: Overslade House's Head Chef Corey Leake took cake to Rugby Fire Station to say thank you on International Firefighters' Day.**

**LEFT: General Manager Violetta Baesu with nursing staff at Overslade House.**



AN EMPOWERING musical about following your dreams is the next production to take to the stage at Rugby Theatre.

Everybody's Talking About Jamie follows the story of the titular 16-year-old, who lives on a council estate in Sheffield. Jamie harbours a dream to be a drag queen - but first he must find the confidence to be his true self beyond the walls of his home.

Director Kevin Bright said: "The first time I saw 'Jamie' I fell in love with the show. It takes you on an emotional rollercoaster."

"Jamie has big dreams and faces so many challenges. Alongside him are a cast of incredible characters, who are funny, sad, brave and sometimes nasty. But the feeling of following your hopes and dreams is the essence of this story."

Supported by his loving mother Margaret and his best friend Pritti, Jamie strives to embrace his true self despite facing bullying and prejudice. The musical explores themes of identity, acceptance and resilience, with heartfelt storytelling, catchy songs and energetic dances.

Kevin added: "Jamie is played by 16-year-old Louis Dutton, who has taken the role and flown with it."

"And there are many talented youngsters throughout the show. In fact we were so blown away by the talent and 'street' attitude at the auditions that we could have cast it



twice over.

"We decided to go with as many as our stage could take, and they are incredible. The adult cast is made up of a mix of new talent and a few familiar faces, all putting their hearts and souls into the show."

"The songs are so catchy you feel like you know them right from the start. The script is hilarious, with so many fabulous characters. The singing and dancing are amazing, and I think audiences will love every minute."

Everybody's Talking About Jamie runs from June 14-21, with a matinee performance on Saturday June 21. Tickets are available via [www.rugbytheatre.co.uk](http://www.rugbytheatre.co.uk) or by calling 01788 541234.

**Left to right: Danielle Burrows as Ray, Louis Dutton as Jamie, Suriyah Mawee as Pritti, and Kim Arnold as Margaret.**



## Thinking about retirement?

Get your finances in order with award-winning independent financial advice in Leamington Spa.

Book a free retirement planning consultation with one of our experts today!

☎ 0800 6342 111

✉ [office@simpsonfs.co.uk](mailto:office@simpsonfs.co.uk)

🌐 [www.simpsonfs.co.uk](http://www.simpsonfs.co.uk)

Find out more



Follow us    

# Refresh your kitchen with a simple but stunning makeover

★★ NOW AVAILABLE ★★  
**24 MONTHS**  
**INTEREST FREE CREDIT**

ENJOY YOUR LUXURY KITCHEN NOW - PAY LATER

**ASK FOR DETAILS**

Subject to status, terms and conditions apply.

**Joe's Doors** can transform your kitchen by replacing doors, panels and trims. Choose from a wide range of kitchen styles for a cost-effective, fuss-free service that can be completed in under two days... and best of all you don't even need to empty the cupboards!

Enjoy your stunning kitchen makeover now and pay later with our **24 months interest-free credit**. Book today for a quick, beautiful kitchen makeover.



BEFORE AFTER

- ✓ No need to empty cupboards
- ✓ No mess, no fuss
- ✓ Most fitted in a day
- ✓ Made to measure



AS SEEN ON TV • PROUDLY MADE IN THE UK • FAMILY RUN BUSINESS

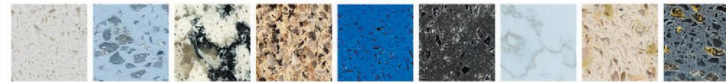


**QUARTZIZE**  
FITS OVER YOUR EXISTING WORKTOP

### Transform your worktops with Quartzize stone overlays

Why replace your worktops when this unique quartz overlay simply fits over your existing surface. Here are some of the amazing benefits:

- **Timeless** - Looks clean and modern.
- **Hygienic** - A perfectly smooth surface.
- **Easy care** - Wipe with a neutral cleaner.
- **Durable** - Tough and scratch resistant.
- **Easily Installed** - Fitted in less than a day.



**FREE SURVEY**  
**FREE DESIGN**  
**FREE QUOTE**  
**FULLY FITTED**  
**NATIONWIDE**

\*Limited period promotional voucher. T and C's apply.

### Just three simple steps to transform your existing kitchen:

- 1** We take some measurements...
- 2** You choose from our range of doors and worktops...
- 3** We'll book a date to transform your kitchen.

## JOE'S DOORS & OVERLAYS



**02476 101914 • 01926 800726 • 01788 422326**  
**joesdoors.co.uk**

Lines Open: Mon - Fri: 8.30am - 8.00pm, Sat: 8.30am - 6.00pm, Sun: 9.00am - 5.00pm. Over 30 years experience.

★★★★★★★★★★★★★★

**JUNE BONUS**

**FREE SINK**  
**WORTH OVER £229\***

Present this voucher to our Home Consultant on the day of your Quartzize survey.



LEFT: Guildhouse Trustee Liz Pichon said preparing the archive display was a 'labour of love'.

RIGHT: Art student Stephen Baker with his piece depicting his son's school sports day.



LEFT: Colourful work from the Guildhouse's upholstery students.

RIGHT: Volunteer Sheila Winterton, a former centre manager at the Guildhouse, with handwork by sewing and dressmaking students.



# Exclusive Offer With All Fully Fitted Kitchens!

Free Upgrade from Tiling to Bespoke Glass Splashbacks with all Fully Fitted Kitchens - Save £1,800!

*Bring This Advert With You*

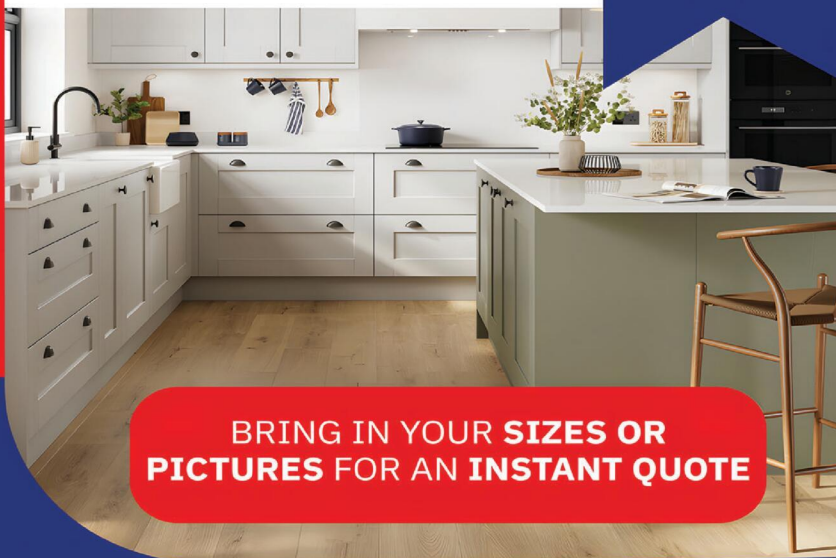


**City Bathrooms**  
Kitchens & Bedrooms  
Est over 35 years

City Bathrooms & Kitchens  
024 7636 5877 | [citybaths@gmail.com](mailto:citybaths@gmail.com)  
[www.city-bathrooms.com](http://www.city-bathrooms.com)  
158 Longford Road, Coventry, CV6 6DR

Proud members of  
**Checkatrade.com** Where reputation matters  
**Google** ★★★★★  
4.9 STAR CUSTOMER RATING

Open 7 days a Week



**BRING IN YOUR SIZES OR PICTURES FOR AN INSTANT QUOTE**

🕒 **Opening Hours**  
Monday to Friday: 8am – 5pm  
Saturday: 9am – 5pm  
Sunday: 10am – 4pm

**Largest Kitchen & Bathroom Showroom in Coventry & Warwickshire**

# New exhibition proudly shows the fruits of town's adult learning courses



Rugby Mayor Barbara Brown admires a piece by her Rugby Borough Council colleague Veronika Beckova.

ART and archives from Rugby's independent adult learning centre have gone on display to mark its 100th anniversary.

The Percival Guildhouse's Centenary Art and Archive Exhibition is now open at Rugby Art Gallery and Museum.

The exhibition, at the Little Elborow Street venue's Floor One Gallery, features paintings by students from the Guildhouse's many art classes, alongside exhibits from the sewing and dressmaking class and the upholstery group.

The balcony leading to the gallery also features the first major display of archive material from The Guildhouse, charting 100 years of adult learning, debates and theatre.

The archive was a labour of love

for Guildhouse Trustee Liz Pichon, who stumbled upon a priceless trove of material - including course programmes, play scripts, diaries and minutes of meetings - which had lain undocumented in the St Matthews Street learning centre's basement.

A £20,000 National Lottery Grant allowed Liz and fellow volunteers to collate, catalogue, digitise and display the records, which reveal how the Guildhouse has developed and reflect changes in society locally and nationally since it opened in 1925.

Liz said: "It was only when we started to look through some of the boxes that we realised what treasures we possessed. The National Archive confirmed that we had material of national significance. "The archives tell many dif-

ferent stories about the Percival Guildhouse and its wider contributions to the heritage of Rugby and surrounding districts."

The Guildhouse, located around

the corner from the gallery, is Warwickshire's only standalone, independent centre offering classes in arts and crafts, wellbeing, languages, history and many other

subjects.

The exhibition is free and open to the public during usual gallery opening times until Saturday June 14.



## OUR BIG SALE IS STILL ON

## OPEN 7 DAYS CV6 5EY

**INFLATION EVERYWHERE - BUT NOT AT CARPET MILL!**

Everything is going up in price, the same for Carpets and this is why it pays to go to Carpet Mill. Manufacturers of yarn and other materials for making carpets have all had price rises and some manufacturers are busy changing their specifications to many ranges to compensate. They also get surplus rolls that they cannot sell to the big stores as they don't have enough stock left to service them.

**Therefore, we are buying those rolls at a FAT DISCOUNT and passing it on to YOU.**





Everything Reduced  
BE QUICK

**BRAND NAME CARPETS AT LOW LOW PRICES**

*From quality Axminster to budget cord*

We are recommended for our low prices, quality service and extensive range throughout the Midlands. There are no R.R. prices on carpets, so if others give 50% offers or sales discounts, is it 50% off their normal high prices. ALWAYS compare with Carpet Mills normal prices!!!!!!!

# CARPET MILL

**CROMWELL STREET (OFF RED LANE) COVENTRY CV6 5EY TEL: (024) 7666 1985**

SOME CUSTOMERS TRAVEL MILES - YOU DON'T HAVE TO - WE ARE HERE

[www.salecarpet.uk](http://www.salecarpet.uk)



## Special art auction for Nepal kids

ARTWORK is going under the hammer in Warwick to raise vital cash for New Futures Nepal.

The charity art auction is taking place in the grounds of Guy's Cliffe House tomorrow (Saturday).

And dozens of pieces of art can be viewed online before then.

New Futures Nepal, based in Leamington, supports children who have been orphaned or have disabilities and would otherwise have struggled to survive and thrive.

Drawings from the Midlands rich motor history are part of the auction. French artist Alan Reullier works with original drawings from British Motor Heritage Ltd ranging from the early 1900s to the 1970s. They were in danger of being destroyed after being digitised. His work reimagines the blueprints.

James Ort works in ceramics from a studio in Oxfordshire. He has created two works of art especially for the auction, both native to Nepal – a red panda and snow leopard.

James added: "Wherever I go I find that art is a good way of getting to know a country. It's also a way of getting people more connected. If we could get Donald Trump behind a potter's wheel the world might look a better place."

Visit [www.32auctions.com/NewFuturesNepal2025](http://www.32auctions.com/NewFuturesNepal2025) to view the artworks.

# Variety of projects to help celebrate Refugee Week

by Philippa Mingsins

**COMMUNITY as a superpower is the theme of this year's Refugee Week in Warwickshire.**

Running from June 16 to 22, the week is a chance for people across the county to come together in recognition of the power of connection, support, and shared belonging.

From art exhibitions and storytelling projects to school activities and community meals, residents will be joining in to show that community is about people looking out for one another, no matter where they're from.

The artwork for 'My superpower for a kinder community' art competition will be on display at Leamington library throughout the week.

This year's competition invited children and young people to explore how their everyday superpowers – like kindness, empathy, and sharing can help build a more welcoming community.

Through art, they reflected on the importance of inclusion and how small actions can make a big difference.

A photography, play and simple acts workshop is taking place at Rugby Art Gallery with artist Sam Ivin at 11am on June 17.

An evening of music, storytelling



Valentine Latysh taking a look at the Ukrainian artwork on display at All Saints Church last year. Picture by Marcus Mingsins 2524006MMR [www.buyphotos247.com](http://www.buyphotos247.com) © Bullivant Media

and shared conversation is being held at Christ Church in Rugby from 7pm on June 17

There will also be a Community as a Superpower celebration event at the Old Shire Hall in Warwick on World Refugee Day on June 20.

Everyone is welcome to join in and celebrate the work of volunteers who have welcomed refugees into their homes and show solidarity with those who have sought sanctuary in Warwickshire.

Drop in to explore cultural reci-

pes, enjoy traditional Ukrainian music, or join Playbox Theatre's storytelling session in the Moomins corner between 10am and 4pm.

For more details, visit the website at [www.warwickshire.gov.uk/refugeeweek](http://www.warwickshire.gov.uk/refugeeweek)

# THE JONES FAMILY JEWELLERS

CASH YOUR GOLD & SILVER TODAY! PRICES ARE THE HIGHEST THEY HAVE EVER BEEN! GET A QUOTE TODAY!



LEAMINGTON SPA

01926 882552 - 3 Satchwell Walk, CV32 4QE

KENILWORTH

01926 954271 - 16 Talisman Square, CV8 1JB

# SUPER STUNNING SUMMER SALE

IS NOW ON AT

# GODIVA CARPETS



**GODIVA**  
CARPETS & FLOORING

presenting

**The Finest Midland's Flooring Show**

Your Wishes Granted - Your Hopes Realised  
Your Dreams Can Come true

at **GODIVA CARPETS**

Where you can afford a new carpet without breaking the Bank

**LOW, LOW PRICES - GREAT, GREAT SERVICE**

Flooring options from Sumptuous Top Quality, to Cheap and Cheerful

**DISCOUNTED PRICES** to suit every pocket and every budget

**Buying quality and affordable Carpets couldn't be easier - and Don't Worry, the Team at Godiva Carpets will make it even easier for you, to find your perfect carpet or flooring options**

- **Top Quality Wilton Royal to Branded Room Sized Remnants to clear and ready to go (No reasonable offer refused)**
- **Landlord Deals from only £24**

Check out our website to see all the lovely comments from our very satisfied customers



**OUR NORMAL OPENING HOURS ARE 9AM TO 5.30PM MONDAY TO SATURDAY (CLOSED ON SUNDAYS)**

## 02476 551200

**GODIVA CARPETS LTD, ARGYLE HOUSE, COLLINGWOOD ROAD, EARLSDON, COVENTRY CV5 6HW**

VISIT OUR ONLINE STORE [WWW.GODIVACARPETS.CO.UK](http://WWW.GODIVACARPETS.CO.UK)



**Brintons**

**CAVALIER**  
FLOORING SYSTEMS

**Lano**  
Carpet Solutions

**Penthouse**  
Carpets

**ABINGDON**

**ulster**  
www.ulstercarpets.com

**STAINFREE**  
The original and the most popular easy-clean carpet

**WILTON ROYAL**

AND MANY MORE LEADING BRANDS

# GODIVA CARPETS

*A family business trading since 1953*

**CLOSED SUNDAYS**



Coombe Abbey Hotel has been crowned as the best hotel in Warwickshire and the West Midlands for the fourth year running.

## Staying at the top

A PUBLIC vote has helped the Coombe Abbey Hotel to be crowned as the best hotel in Warwickshire and the West Midlands for the fourth year running.

The Hotel has retained its title in the Muddy Stiletto Awards for Warwickshire and the West Midlands, topping the category in the popular lifestyle awards once again.

The former 12th-century Cistercian abbey is deemed one of the region's most-loved destinations regarding short stays, weddings and memorable experiences.

The hotel now advances to the national finals of the competition-

and eager staff hope to be among the winners announced on June 25.

Ron Terry, group operations director for No Ordinary Hospitality, which operates Coombe Abbey Hotel, said: "To be voted by the public makes this recognition extra special, and we're honoured to represent the region in the national finals."

"We'd love to cap our 30th year as a hotel by claiming the national title."

Visit [www.warks.muddystiletto.co.uk](http://www.warks.muddystiletto.co.uk) for the regional winners of the Muddy Stiletto Awards.

# Bronze for Guildhall in tourism awards

ST MARY'S Guildhall in Coventry has cemented its place as one of the country's leading visitor tourist attractions.

The 700-year-old venue won Bronze in the International Tourism category at the VisitEngland Awards for Excellence 2025.

The venue fought off strong competition from the country's most prestigious attractions to reach the final, where it was joined by The Beatles Story in Liverpool and World of Wedgwood in Staffordshire.

Judges praised the Guildhall for its passion for accessibility and history, its tailored approach to welcoming visitors from around the world, and the outstanding customer service delivered by its staff and volunteers.

The award comes less than three years after the venue reopened under the management of No Ordinary Hospitality, following a renovation.

Abi Moore, Heritage and Venue Manager at St Mary's Guildhall, said: "To be named among the top three attractions for International Tourism in England is a testament to the amazing work of our entire team - we are absolutely delighted to have achieved a Bronze award."

"Our staff and volunteers go above and beyond to create welcoming, high-quality and accessible experiences for every visitor, whether they're from Coventry or



Jubilant Guildhall staff members Abi Moore, Jayne Pyatt and Hannah Hewlett brought home bronze from the VisitEngland Awards ceremony in Brighton. Picture by VisitBritain/Christopher Orange

visiting from the other side of the world.

"This award helps put both the Guildhall and Coventry firmly on the map as a must-visit destination."

Coun Jim O'Boyle, Coventry City Council's cabinet member for jobs, regeneration and climate change, said: "This top industry award is great news for our wonderful Guildhall. We have always known

how fantastic and unique it is and now that has been recognised and celebrated on a global stage.

"This award will help spread the word spread nationally and internationally and in turn help to attract even more people to visit the Guildhall and city."

Visit [www.stmarysguildhall.co.uk](http://www.stmarysguildhall.co.uk) for more information.



## ASK THE EXPERT

Hand, wrist and elbow information evening

INCLUDES A FREE 1:1 CONSULTATION



Mr Shyamalan  
Consultant Hand Surgeon

### Event details



Wednesday 2<sup>nd</sup> July 2025



6pm - 8pm



West Warwickshire Sports Complex  
78 Grange Road, Solihull, B91 1DA

BOOK NOW



or give us a call  
07973 696 606

Website

[www.midlandhandclinic.com](http://www.midlandhandclinic.com)

## Is Hand Pain Holding You Back?

Whether it's the frustration of struggling with buttons, the difficulty of opening jars, or the sadness of not being able to plant bulbs in your garden, it can be truly upsetting when pain and discomfort affect your hands.

Many common hand conditions share similar symptoms, but understanding the signs can help you identify what might be going on. Can you spot the symptoms of these common hand conditions?

### Common Hand Conditions and Their Symptoms

#### Carpal Tunnel Syndrome

Carpal tunnel occurs when a nerve in your wrist is put under pressure. You might be at higher risk if you have diabetes, are pregnant, or if your job or hobbies involve repetitive hand movements.

#### Symptoms to look out for:

Pins and needles in the fingers, especially the thumb, index, middle, and half of the ring finger.

Numbness in the hand.

Muscle wasting in the thumb area (in more severe cases).

Waking from sleep due to hand discomfort or numbness.

#### Dupuytren's Disease

Dupuytren's disease involves a thickening of the tissue in the palm, fingers, or thumbs, often causing fingers to bend inwards towards the palm. Risk factors include smoking, heavy alcohol consumption, manual work, diabetes, and a family history of the condition.

#### Symptoms to look out for:

A finger that has started to contract (bend downwards) or a noticeable lump in the palm.

It most commonly affects the ring and little finger, but can appear in any finger or even the thumb.

#### Common Cause of a Palm Lump: Thumb Arthritis

Thumb arthritis frequently affects the basal joint at the base of the thumb. This can make everyday small tasks, like doing up buttons, quite challenging.

### Symptoms to look out for:

Pain and stiffness at the base of the thumb.

A reduction in grip strength.

Clicking and cracking sounds in the joint with movement.

### Trigger Finger

Trigger finger happens when a tendon in the front of your hand thickens and gets "caught," causing your finger to lock in a bent position.

### Symptoms to look out for:

A finger that locks down in a bent position.

A clicking sound or sensation when trying to straighten the finger.

It can affect any finger, and sometimes the thumb.

Pain that radiates up the arm from the affected finger.

### Why Choose Us? What Our Patients Say:

"An extremely nice man. Professional but very pleasant and caring. He listened to me and took the time to explain things and advise me. I felt confident in the treatment offered and would have no hesitation in consulting him again and would recommend him to others".

"I have been treated by Mr Shyamalan before and find him excellent. That is the main reason for using the clinic".

"Genuinely caring surgeon, very happy with how I was treated".

"I can only say 5 stars for Mr Shyamalan. Friendly, kind and very easy to talk to. Very happy after keyhole surgery to help my wrist problems. Highly recommended".

### Get In Touch - We Can Help

If you're experiencing any of the symptoms listed above, and if hand pain is getting in the way of your day-to-day life, please don't hesitate to get in touch with us. We're here to help you understand your condition and find the right solution to get you back to doing the things you love.

[www.midlandhandclinic.com](http://www.midlandhandclinic.com)



# Rugby Antiques & Jewellery Valuation Day

## Tuesday 17th June 12pm to 2pm

Valuations of Silver, Jewellery, Watches, Gold, Ceramics, Antiques and General Collectables.

Items may be left to be consigned into Auction

**The Black Horse**  
**43 The Green, Bilton,**  
**Rugby, CV22 7LZ**

Donations in aid of WCS Care



**Free Home Visits | Estate Clearances & Downsizing**

If you have a lot of items you want valuing, we offer a **FREE** home visit service where we can come to your home. Contact us for more info

**T: Hansons Warwickshire 07470 459309**

**E: [clivejones@hansonsauctioneers.co.uk](mailto:clivejones@hansonsauctioneers.co.uk)**

**[www.hansonsauctioneers.co.uk](http://www.hansonsauctioneers.co.uk)**



**Hansons Auctioneers, Etwall, Derbyshire, DE65 6LS**

# THE BLINDING BEST: How one Coventry business is raising the bar (and the blinds!)

**In a world of quick fixes and throwaway trends, it's refreshing to find a company where craftsmanship, care and community still matter.**

Step into the world of Brixham Blinds, and you'll soon see it's not just about dressing windows – it's about transforming homes. Based in the heart of Coventry and proudly serving the West Midlands, Brixham Blinds is a shining example of what happens when passion meets precision. With a service as

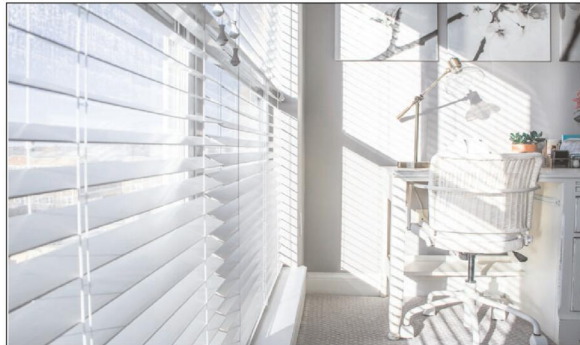
seamless as their sleek roller blinds, owner Zak Mangeri has spent the past ten years building something truly special: a local business that combines top-tier products with good old-fashioned service. "At Brixham Blinds, we pride ourselves on being more than just a supplier," Zak says. "We provide a made-to-measure service, tailored exactly to each customer's needs, no matter the size, style or shape of their space." And it shows. With 100% five-star reviews and an ever-growing number of loyal customers, Zak and his team have become the go-to for

both homeowners and tradespeople across the region. Whether you're styling a single window or outfitting a whole development, Brixham Blinds offers free consultations, expert advice, and solutions for every question you can think of. From minimalist vertical blinds for a contemporary living room to dramatic Roman blinds that give your kitchen a five-star feel, there's truly something for everyone. Their extensive collection includes roller, venetian, pleated, woodweave, blackout blinds and classic shutters – each one carefully crafted using high-quality materials, and all compliant with the latest child safety regulations. And if you're in the trade? You're in good hands too. "We work closely with builders, interior designers, and property developers to deliver bespoke blinds at competitive trade prices," Zak explains. "Everything is made to measure, and everything is backed by our five-year guarantee." Speed, too, is part of the Brixham promise. "We know timing is everything," Zak smiles. "That's why we offer a seven-day fitting promise and aim to get your blinds measured within 48 hours of consultation." It's that kind of commitment that keeps the rave



reviews rolling in: "Absolutely delighted with all of my blinds. Professional, lovely to deal with and the quality is superb." "They look fantastic. Lovely staff and very quick turnaround. Highly recommended." "Excellent service from start to finish. My blinds were fitted within a week of ordering them." And let's not forget the fitting. Brixham Blinds offers a no-obligation measuring service, a seven-day fitting promise, and a generous five-year guarantee. That's not just service - it's peace of mind. As someone who's wrestled with wonky DIY blinds in the past (hello, lopsided Ikea disaster), I can't tell you what a relief it is to meet

someone who gets it right the first time. Zak and his team don't just fit blinds - they make your house feel like a happy and well functioning home. Whether you're chasing that dreamy, show-home look or just want a better night's sleep in total blackout bliss, Brixham Blinds is ready to help you reimagine your space – beautifully, affordably, and reliably. With Zak at the helm, it's clear this Coventry gem isn't just good... They're the blinding best. Ready to find your perfect fit? Browse their collection online or book a free, no-obligation quote. The blind of your dreams is just a consultation away.



**Call Zak and the Brixham Blinds team on 024 7666 6686**  
 Visit [www.brixham-blinds.co.uk](http://www.brixham-blinds.co.uk)  
 Serving Coventry and the West Midlands – trade and consumer welcome



**10 YEARS WARRANTY ON SHUTTER BLINDS**

Available in beautiful and stylish Hard Wood and Faux Wood

## BRIXHAM BLINDS Residential and Commercial

Brixham blinds are a well-established blinds company offering to trade and consumer. With a great range of quality bespoke and made to measure blinds by an established blind company you can trust.

Whether you're thinking of vertical blinds, roller blinds, venetian blinds or roman blinds, shutter blinds, all of our blinds come with child safety regulations and fittings to make sure your home is safe.

**WE WILL BEAT ANY LIKE-FOR-LIKE QUOTE**

Visit us at: 21 Brixham Drive, Coventry, CV2 3LA  
 Email: [info@brixham-blinds.co.uk](mailto:info@brixham-blinds.co.uk)

Contact us today for a **FREE** no-obligation quotation

**T: 02476 666686** [brixham-blinds.co.uk](http://brixham-blinds.co.uk)

# Kitchen revamp means things are really cooking

MINI masterchefs at a primary school near Rugby can get cooking thanks to a new kitchen area.

Kilsby CE Primary School has recently renovated a kitchen area so children can begin special Food Technology lessons.

The lessons will have a focus on practical cooking skills to ensure the children develop a thorough understanding of nutrition and the working characteristics of food materials.

The renovation was supported by Rugby kitchen supplier Eat Soak Sleep, and by tiling companies BAL and Topps Tiles, which donated tiles, grout, sealant and other products to give the kitchen a modern look.

Michael Potter from the Innovate Multi Academy Trust which runs the school said: "As school budgets continue to tighten and funds for essential projects become increasingly scarce, the much-needed kitchen refurbishment at Kilsby CE Primary School faced significant

challenges.

"However, thanks to the dedication of the school's passionate head, Georgina Sensecall, a grant from Cummins was successfully secured to help kick-start the project.

"Georgina, who had long advocated for this refurbishment, then partnered with a local kitchen supplier, Eat Soak Sleep in Rugby, who generously provided the kitchen and a lot of time to help get everything correct.

"With the support of the premises site team, the installation was carried out, resulting in the creation of a remarkable space that will benefit both the children and the wider community.

"We would like to thank BAL for their kind donation, which has allowed us to complete our kitchen renovation. This new space will provide an inspiring environment for our students to develop vital cooking and nutrition skills.

"The support from BAL, along with contributions from Topps Tiles, has made a real difference, and we look forward to seeing the children thrive in their Food Technology lessons."

Alex Underwood, Head of Marketing at BAL said: "We were delighted to be able to donate products to finish off this wonderful kitchen area and support all of their hard work.

"The completed kitchen area looks fantastic and will provide a great facility for the children to learn all about cooking and nutrition providing crucial life skills and supporting healthy living."



Lutterworth County Park.

## Opening up the debate

THE FUTURE of public open spaces in the Lutterworth area is the subject of a new public consultation.

Harborough District Council (HDC) is working to propose minimum standards for open spaces across the district, and is inviting residents to have their say.

Work is also being carried out to understand current open space provision, barriers to access and threats to open space, as well as reviewing opportunities for the long-term stewardship of open spaces.

The review will provide evidence to support the council's new local plan to 2041 and will support the council in securing funding through the planning system.

The Harborough District spans 238 square miles across south and east Leicestershire, and features open spaces of varying size and type which form a network of green space, providing recreation and essential habitats for wildlife.

Coun Simon Galton, HCD's Cabinet Lead for Planning, said: "The council recognises the vital contribution that open space provides for biodiversity, recreation, play and health and wellbeing. After this thorough review the Open Spaces Strategy for the Harborough District will provide a robust evidence base for the use and demand of open space.

"The revised strategy will allow the council to prioritise the development of, and investment into, open space against updated quality, quantity and accessibility standards.

"We'd like to hear the views on public open spaces from the public to ensure that we provide high quality and accessible spaces that meet the needs of residents in the future."

Visit [www.harborough.gov.uk/consultation/info/161](http://www.harborough.gov.uk/consultation/info/161) to take part in the consultation, which runs until July 15 at 1pm.



Join us for our next event

care UK

Blossomfield Grange care home, Solihull

Race against dementia

Friday 4th July  
10am - 4pm

Join us and help us raise money for **Race Against Dementia** by walking laps of our scenic grounds. Refreshments will be provided by our wonderful head chef team whilst also having the opportunity to meet the team and view the home and its beautiful refurbishment.

Trusted to care.

To book please call **0121 667 7835** or email [jo.hopkins@careuk.com](mailto:jo.hopkins@careuk.com)

Newly refurbished

## Vespers by candlelight

ARMONICO Consort will perform a summer evening candlelit performance of Rachmaninov's Vespers at the Collegiate Church of St Mary in Warwick on Saturday June 21.

The Russian composer's great choral work was written in 1915, while Rachmaninov was on a concert tour of his homeland to support the war effort. It was music that brought consolation as well as a yearning for peace in the depths of war.

Hugely popular from the outset, Rachmaninov said: "Even in my wildest dreams I could not have imagined that I could write such a work", and hoped its fifth movement would be played at his funeral.

The rich and sonorous tones of the Vespers are steeped in the long tradition of the Russian Orthodox Church and Rachmaninov found a way of turning the unaccompanied voices into an orchestra, with singers frequently dividing into multiple parts.

Led by founder-director Christopher Monks, Armonico Consort is especially known for its innovative concerts of choral masterpieces, and its critically-acclaimed performances and recordings.

Christopher said: "Rachmaninov Vespers is simply the most gorgeous choral music ever to have been written, and for a moment in time, simply nothing else will matter."

Visit [www.armonico.org.uk](http://www.armonico.org.uk) for full details.

# Classics of the stage and beyond in new season

STORIES from across the centuries and from across the globe feature in the RSC new season in Stratford.

Joining previously announced productions of *The Winter's Tale*, *Measure for Measure* and *The BFG* in the Royal Shakespeare Theatre, is a new production of *Henry V*, reuniting RSC co-artistic director Tamara Harvey with Alfred Enoch following their collaboration on *Pericles* in 2024.

In the neighbouring Swan Theatre, Olivier Award-winning Adrian Lester takes the title role of *Cyrano de Bergerac* in a new version by Simon and Debris Stevenson.

The Swan will also see Josh Roche revive his acclaimed two-part production of *The Forsyte Saga* with original cast members Fiona Hampton, Joseph Millson and Flora Spencer-Longhurst reprising their roles as Irene, Soames and Fleur.

In *The Other Place*, Daniel Raggett returns to direct Sam Heughan and Olivier and Tony award-nominated Lia Williams in *Macbeth*.

Tony award-nominated director, writer, composer and actor Whitney White brings her take on Shakespeare's iconic characters to *The Other Place* in *All Is But Fantasy* - four stories staged across two gig-theatre performances set against a live sound-



track of rock, pop, indie and gospel.

Lynette Linton directs the world stage premiere of *The Boy Who Harnessed the Wind* - a new musical based on the memoir by William Kamkwamba with book

and lyrics by Richy Hughes and music and lyrics by Tim Sutton.

Next Generation present a collaborative new version of Shakespeare and Middleton's morality fable, *Timon of Athens*, part of the RSC's Next Generation

talent development programme for young theatre makers from across England.

RSC co-artistic directors Tamara Harvey and Daniel Evans said: "Since embarking on this journey together, our guiding principle as co-artistic directors of the RSC has been to seek out bold and exciting works which deepen our understanding of ourselves, each other and the world around us.

"From illuminating and daring classical productions to inventive and socially resonant new writing, this season is a celebration of globally inspired stories, thrillingly told by the most exciting theatre artists of today.

"From Malawi or Manhattan, through French fields, Scottish heaths, mythical lands and Giant country, our 2025/26 programme celebrates what we believe a 21st Century RSC can and should be - global in ambition and outlook, open and collaborative in nature and continuously redefining how Shakespeare and great storytelling can bring joy, connection and improve our understanding of one-another."

Visit [rsc.org.uk](http://rsc.org.uk) for further information.

**Sam Heughan and Lia Williams star in *Macbeth* at *The Other Place*. Picture Sebastian Nevols.**

### BOOK YOUR MOBILITY SCOOTER SERVICE WITH FREE BATTERY CHECK NOW - CALL FOR DETAILS

<div style="text-align: center; font-weight: bold; color: red; font-size: 1.2em;">★ STAR DEAL ★</div> <div style="text-align: center;"> </div> <div style="text-align: center; font-weight: bold; color: blue;">COMPACT SCOOTER</div> <ul style="list-style-type: none"> <li>• Easy To Transport</li> <li>• Breaks into 4 Parts</li> <li>• 4 MPH</li> <li>• Free Insurance*</li> </ul> <div style="display: flex; justify-content: space-between; align-items: center; font-weight: bold; color: blue;"> <span>BRAND NEW</span> <span style="background-color: white; padding: 2px 5px;">SAVE</span> </div> <div style="display: flex; justify-content: space-between; align-items: center; font-weight: bold; color: blue;"> <span>WAS £999.99</span> <span style="background-color: white; padding: 2px 5px;">£699.99</span> <span style="background-color: white; padding: 2px 5px;">£300</span> </div>	<div style="text-align: center; font-weight: bold; color: red; font-size: 1.2em;">★ STAR DEAL ★</div> <div style="text-align: center;"> </div> <div style="text-align: center; font-weight: bold; color: blue;">RISER RECLINER CHAIR</div> <p style="text-align: center; font-size: 0.8em;">Relax in total comfort, helps to stand you up from sitting and raises your legs to help with circulation</p> <div style="display: flex; justify-content: space-between; align-items: center; font-weight: bold; color: blue;"> <span>BRAND NEW</span> <span style="background-color: white; padding: 2px 5px;">SAVE</span> </div> <div style="display: flex; justify-content: space-between; align-items: center; font-weight: bold; color: blue;"> <span>WAS £799.99</span> <span style="background-color: white; padding: 2px 5px;">£499.99</span> <span style="background-color: white; padding: 2px 5px;">£300</span> </div>	<div style="text-align: center; font-weight: bold; color: red; font-size: 1.2em;">STAIR LIFTS</div> <p style="text-align: center; font-size: 0.8em;">Give your life a lift Enjoy your home</p> <ul style="list-style-type: none"> <li>• Safe and reliable</li> <li>• Easy to use</li> <li>• Remote control</li> <li>• Swivel Seat</li> <li>• Safety sensors</li> </ul> <div style="text-align: center; font-weight: bold; color: red; font-size: 1.2em;">FULLY FITTED From £1,699</div> <div style="text-align: center; font-weight: bold; color: red;">CALL FOR A FREE QUOTE</div>	<div style="text-align: center; font-weight: bold; color: red; font-size: 1.2em;">NEW MOBILITY SCOOTER</div> <div style="text-align: center;"> </div> <div style="text-align: center; font-weight: bold; color: red; font-size: 1.2em;">FROM £15 PER WEEK</div> <p style="text-align: center; font-size: 0.8em;">Do You Receive The Higher Rate Mobility Allowance?</p> <p style="text-align: center; font-size: 0.8em;">If so you can use part of this allowance to get A New Scooter or Powered Wheel Chair From as Little as £15 a week</p> <div style="text-align: center; font-weight: bold; color: red;">CALL FOR A FREE QUOTE</div>
--	--	---	--

Wheelchairs from **£129.99** • Motorised Bath Lifts from **£279.99** • Commodes from **£59.99** • 3 Wheel Walkers from **£69.99**

CALL TO BOOK YOUR SCOOTER SERVICE

02476 630444

Max Mobility Ltd, 7 Sherbourne Arcade, Coventry, CV1 1DN (opposite Home Bargains)  
[www.maxmobilityltd.co.uk](http://www.maxmobilityltd.co.uk)  
Pictures for illustration • Prices with VAT Exemption

# Fresh bid to tackle young motorbike crash rates

# Covering miles to remember

MILES were walked, run and cycled in Warwickshire in memory of those killed on the roads.

The families of victims of road traffic collisions and police officers joined forces to notch up 1,195 miles in support of the RoadPeace Challenge in May.

During the week, 166 people took part with each mile achieved representing someone who has been killed nationally on the roads. A total of 1,624 people were killed on UK roads in 2024, including 25 people in Warwickshire.

Three special guided walks also took place across the week at Shire Hall in Warwick, Warwickshire Police HQ in Leek Wootton and Hartshill Hayes Country Park.

Philip Seccombe, police and crime commissioner for Warwickshire and chair of Warwickshire Road Safety Partnership, said: "We are really grateful to everyone who took part in the RoadPeace Challenge in Warwickshire to make a difference by remembering lives lost and showing their support for safer roads."

"In Warwickshire in 2024, 25 people lost their lives on our roads and a further 299 people were seriously injured. Every year hundreds of families suffer unimaginable grief and loss as a result of these collisions. I don't think there are many of us whose lives haven't been affected in some way by a collision and this annual event helps to raise awareness of road harm and how we can all play a part in



making our roads safer."

**Walkers taking part in the RoadPeace Challenge outside the church in Leek Wootton.**

MOVES are under way to reduce the number of accidents involving young motorcyclists on Warwickshire's roads.

Motorcyclists are one of the most vulnerable groups on Warwickshire's roads, with a significant proportion of those killed or seriously injured involving riders.

Between 2019 and 2023, 73 motorcyclists aged 16 to 20, riding 50cc to 125cc bikes, were injured in crashes in Warwickshire.

Warwickshire County Council Road Safety Education, in collaboration with Warwickshire Road Safety Partnership, is aiming to halve the number of people killed and seriously injured on the county's roads by 2030.

And the new Warwickshire Riders Education Portal - an online initiative designed to support the next generation of motorcyclists - is one of the projects being developed.

It offers a range of information, advice and resources tailored to young people aged 16 to 24 years who are thinking about learning to ride and to those who have recent-

ly passed their Compulsory Basic Training test.

Digital resources available on the portal focus on essential motorcycle protective equipment. Short videos offer practical guidance on critical safety gear - including helmets, jackets, trousers, gloves, and boots - highlighting the vital role each item plays in protecting riders.

Mark Ryder, WCC communities spokesman, said: "This new Warwickshire Riders Education Portal is a vital step forward in our commitment to road safety."

"By providing accessible, high-quality educational resources and training opportunities, particularly for young riders, we are empowering the next generation of motorcyclists to make safer choices. This collaborative initiative is a testament to our dedication to reducing casualties on our roads and ensuring that Warwickshire's riders have the knowledge and skills they need for a lifetime of safe journeys."

Email [roadsafetyeducation@warwickshire.gov.uk](mailto:roadsafetyeducation@warwickshire.gov.uk) for more information about the rider education portal.

# LOVE RUGBY FESTIVAL

20 June - 6 July 2025



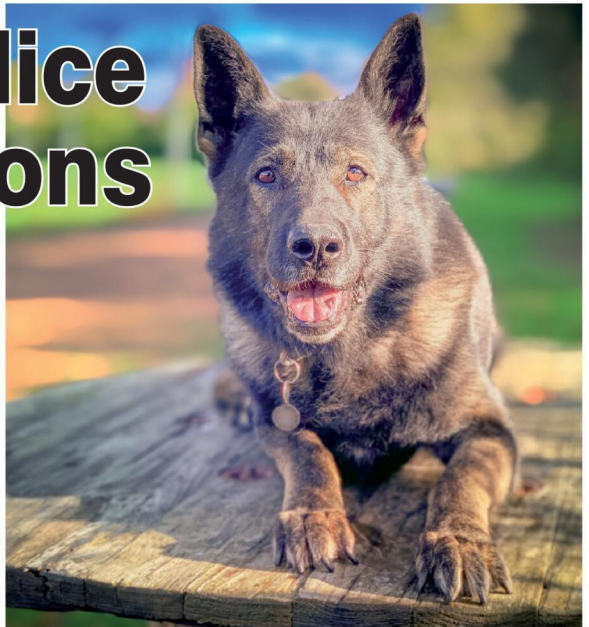
The Love Rugby Festival is a celebration of arts, music, sports, and family entertainment, bringing the community together for an unforgettable experience.

From live performances showcasing local musicians to theatre shows, the festival offers something for everyone. Families can enjoy fun activities, and hands-on arts and crafts.

Sports lovers can take part in exciting taster sessions and the 'Couch to 5K' fun run, which winds through the town centre.

See the festival guide and register for the fun run at: [rugby.gov.uk/loverugby](https://rugby.gov.uk/loverugby)

# Charity calls for police dogs to have pensions



A CHARITY which supports police dogs when they retire has launched a campaign calling for pensions for all police service animals when they hang up their badges.

The Thin Blue Paw Foundation has launched a petition calling for the Government to introduce mandatory financial assistance for police dogs once they retire – or police dog pensions.

This will mean new owners are not left to face hefty vet bills for dogs who often come with health and medical conditions due to their strenuous working lives.

The Foundation supports retired police dogs across the UK and has, since launching in August 2020, provided grants totaling more than £380,000 for life-saving surgeries, vital medication, and regular therapy to ensure these canine heroes live long, happy and healthy retirements and receive the treatment they need for any medical conditions they suffer. There are around 1,700 serving police dogs operating across the UK's 45 police forces, and an estimated 100, on average, retire every year.

## Future planning

While the Thin Blue Paw

Foundation will continue to support retired police dogs across the UK – the charity's trustees want to see policy change to secure the futures of these dogs and guarantee they can access the best in veterinary treatment, therapy and medication once they retire.

The charity has launched a petition and is urging the public to get behind the campaign, which would see the Government ring-fencing a budget to ensure a basic level of support to the retired dogs' new owners to ensure they are not left with the significant financial pressures themselves.

Around £5,000 of those funds have been paid for Captain, who served with West Midlands Police as a general purpose dog for three years before retiring, in 2022, when he ruptured his cruciate ligament and being declared unfit for service.

The strenuous working life had taken its toll on the seven-year-old's spine and the German Shepherd now needs major spinal surgery to repair the damage his physical career had on his body.

The Thin Blue Paw has already paid for diagnostic tests, scans and treatment to find the extent of the damage to his spine and veterinary experts have suggested he needs rehabilitative therapy to strengthen him before they can operate.

And the charity is paying for him

to have regular hydrotherapy, physiotherapy and medication, and the surgery is expected to cost a further £5,000.

The charity's chairman, Kieran Stanbridge, said: "Unfortunately, the wear and tear from Captain's working life has left its mark on his body, and he's been struggling on his rear legs for some time. Tests have shown that he's got severe damage to his spine which needs surgery so he can continue to have a quality of life."

"Captain gave years of his life to working as a police dog and now he deserves to have a long and happy, comfortable retirement, so we want to give him the very best chance at that."

Captain, who was partnered with PC Marcus Cottrell, during his career was a 'fearsome' police dog who was excellent at his job and won the Police Chief's Certificate of Achievement.

## 'Physical demands'

Mr Stanbridge added: "Police dogs lead physically demanding lives and, when they retire – whether due to injury or age – they often have health problems as a result of their career, which can require expensive medication, therapy and management throughout their retirement."

"Although we've worked with insur-

The Thin Blue Paw wants police dogs, like Captain, to have a pension to help cover medical costs when they retire.

ance companies over the last few years to help them launch special policies open to retired police dogs making it easier for owners to get insurance cover, it's the Government's responsibility to offer some ongoing support to these canine heroes once they hang up their harness."

The Foundation says arthritis is the most common condition it helps

owners treat and, based on an average of £200-a-month for pain-relief medication, estimates it costs around £2,400 a year more to care for a retired police dog than a normal pet dog of a similar age and breed.

Visit: [thinbluepaw.org.uk/pensions-for-police-dogs](http://thinbluepaw.org.uk/pensions-for-police-dogs) for more or to sign the petition.



HAMBERLEY  
CARE HOMES

## LIVE WELL THIS SUMMER AT COFTON PARK MANOR LUXURY CARE HOME

Enjoy garden strolls, afternoon teas, and a summer of comfort with new friends. Schedule a private tour today, and learn more about our all-inclusive\* package:

0121 826 3214 | [enquiries@hamberleycarehomes.co.uk](mailto:enquiries@hamberleycarehomes.co.uk)

COFTON PARK MANOR  
466 Lickey Road, Cofton Hackett B45 8UU

[www.hamberleycarehomes.co.uk](http://www.hamberleycarehomes.co.uk)

\*Terms and conditions apply.



# HOLLOWAYS

A U C T I O N E E R S

EST. 1972



## Leamington Silver & Jewellery Valuation Day

### Wednesday 18th June

### 12pm to 2pm

Valuations of Silver, Jewellery, Watches, Gold,  
Antiques and General Collectables.

**Items may be left to be consigned into Auction**

**The Leopard,  
10 Oakley Wood Road, Bishop's Tachbrook,  
Leamington, CV33 9RN**

**Donations in aid of WCS Care**



### Free Home Visits | Estate Clearances & Downsizing

If you have a lot of items you want valuing, we offer a **FREE** home visit service where we can come to your home. Contact us for more info

**T: Hansons Warwickshire 07470 459309**

**E: [clivejones@hansonsauctioneers.co.uk](mailto:clivejones@hansonsauctioneers.co.uk)**

**[www.hansonsauctioneers.co.uk](http://www.hansonsauctioneers.co.uk)**



**Hansons Holloway's, Banbury, Oxfordshire, OX16 5NB**

# Protecting your skin when the heat is on



AS the weather starts to heat up, now is the time to switch up the daily skincare routine. Skin tends to become more sensitive in warmer conditions, which is why it's important to adjust skincare routines.

In light of summer's near-arrival, experts at beauty and wellness booking app Fresha - Fresha.com - have delved into some of the most essential skincare routine switches which are needed.

## Which skincare products should I avoid this summer?

Ditch the heavy moisturisers - Too much moisturiser can clog the pores, resulting in an oily breakout. It is better to apply a lighter layer of moisturiser throughout summer to help keep skin hydrated while reducing the risk of blemishes.

Switch to a moisturiser containing SPF to guarantee greater sun protection. Incorporating SPF products into a skincare routine is a fantastic way to stay feeling refreshed while also protecting skin.

If switching to SPF-based products, it is crucial to apply these as the last skincare routine step to allow the skin to receive maximum protection. Wait at least 20 minutes after application before going outside to thoroughly reduce the risk of sun damage.

Only apply retinol at night - Instead of using retinol in a morning skincare routine, which runs the risk of making skin more susceptible to sun damage, swap the product into your evening routine.

Continuing to use retinol safely over the summer months can have its benefits. The product can help boost collagen production, often broken down by UV rays, and also counteract pigmentation associated with sun exposure.

If applying retinol over the summer, it is crucial not to forget SPF. Retinol speeds up the shedding of dead skin cells, leaving skin more vulnerable to sun damage.

To reduce the risk of skin irritation, only apply a small amount of the product during evenings and ditch the retinol entirely if you are holidaying somewhere hot. If retinol is not already part of a skincare routine, it is best to wait until the cooler months before testing the product.

Avoid exfoliating acids - Products containing exfoliating acids may be risky during the summer.

When over-used, exfoliating acids can reduce the skin's natural protection against the sun and can dehydrate the skin further, making it more susceptible to skin damage.

Exfoliating acids should be used in moderation and applied around once-a-week at most to avoid sun-

burn. SPF should always be the last step in the morning routine, so make sure exfoliation takes place first before applying SPF products.

Keep an eye out for products that contain hyaluronic acids, which can help to boost the skin's hydration, leaving a bright and healthy complexion.

## Which skincare products should I be using this summer?

Vitamin C serums - These enhance the performance of SPF products by giving skin thorough protection against UV rays. The serum can also boost hydration and brightness, giv-

ing skin that sought-after glow.

Vitamin C serums can also help to soothe painful sunburn and protect against the risk of long-term sun damage. It is recommended to avoid mixing vitamin C serums and retinol to reduce the risk of skin irritation.

Niacinamide serums - After winter, many people find themselves struggling with dry skin, which is why adding a niacinamide serum into skincare routines can be hugely rewarding over summer. Niacinamide boosts the skin's hydration and enhances moisture.

Niacinamide serums also help to regulate the skin's oil production, reducing the appearance of oily skin.

Use niacinamide in both your morning and evening skincare routine and to apply the product after cleansing and toning. Niacinamide should also be applied before using more acidic serums, such as vitamin C.

Hydration is key when it comes to summer skincare, which is why it is essential to keep an eye out for hydrating serums.

Gel cleansers - Thick cleansing creams can potentially clog up the pores during warmer weather, which is why switching to mild gel cleansers is a more trustworthy alternative. Gel cleansers reduce the risk of breakouts and skin dehydration.



By Coach from Coventry, Leamington Spa

Reader Travel CoventryObserver.co.uk



## VE DAY 80: POPPIES AT THE TOWER OF LONDON

Departing Sat 9 Aug '25, Sat 23 Aug '25, Sat 20 Sep '25

Join us at the Tower of London to commemorate the 80<sup>th</sup> anniversary of the end of the Second World War with a spectacular poppy installation. This new display represents the sacrifice made by so many and a symbol of resilience against overwhelming odds.

### SO MUCH INCLUDED...

- ✓ Return coach travel from Coventry, Leamington Spa
- ✓ Overnight stay at a selected hotel outside London (JG3 or JG4 rating) with breakfast
- ✓ Admission to the Tower of London & the Poppies at the Tower installation
- ✓ Free time in London for shopping & sightseeing

2 Days by Coach only £159

Single Supplement £50



## LITTLE TRAINS OF NORFOLK & THE MISSISSIPPI PADDLE STEAMER

Departing Mon 18 Aug '25

The beautiful county of Norfolk is characterised by charming seaside towns, and unspoilt coastline. We discover the beauty of its waterways by paddle steamer as well as enjoy nostalgic journeys on Norfolk's heritage railways, taking us back to a bygone era.

### SO MUCH INCLUDED...

- ✓ Return coach travel from Coventry
  - ✓ 4 nights at the Nelson Hotel, Great Yarmouth (JG2+ rating) with dinner & breakfast
  - ✓ 99p bar on selected drinks for 3 hours every evening (April only)
  - ✓ Entertainment some evenings (at the Nelson & Waverley Hotels only)
  - ✓ Heritage train journeys on the North Norfolk Railway & Bure Valley Railway
  - ✓ Mississippi Paddle Steamer cruise on the Norfolk Broads
  - ✓ Excursion to Cromer & Sheringham
- Optional excursion to Norwich (£15pp)

5 Days by Coach only £479

Single Supplement £50



## ROYAL SANDRINGHAM, REGAL STAMFORD & HISTORIC KING'S LYNN

Departing Mon 22 Sep '25

Have you always wanted to take a peek behind the historic walls of Norfolk's Sandringham? Well now is your chance! Follow in the footsteps of royalty, discover the stone tower of Stamford and wander through the ancient seaport of King's Lynn on this break.

### SO MUCH INCLUDED...

- ✓ Return coach travel from Coventry
- ✓ 4 nights at the Milestone Hotel, near Peterborough (JG3 rating) with dinner & breakfast
- ✓ Excursions to Sandringham, Oakham, Stamford, Boston Market & King's Lynn

5 Days by Coach only £399

Single Supplement £125

For more information, or to book, please call **03332 342 514** or visit us online at [justgoholidays.com/OSG](http://justgoholidays.com/OSG)



These packages are subject to Just Go! Holidays terms & conditions. Coach bookings are protected by Bonded Coach Holidays & the Association of Bonded Travel Organisers Trust Ltd. Air holidays are ATC protected (No. 0289). Prices are per person based on two people sharing a room & holdered on bookings made up to 10 days prior to publication, after which prices may fluctuate. Calls to 033 numbers are free within inclusive minutes packages, else standard rates apply. Choices of date, hotel, airport or pick up location may incur a supplement. Please see webs for full details.





# PLAY OUR SUMMER RAFFLE

**1st Prize**  
**£3,000**

**2nd Prize £500**

**3rd Prize 5 x £50**

**4th Prize 10 x £25**

Every raffle ticket bought helps  
save lives in your community



**Tickets £1**



Scan the QR code  
to play online 



For ticket books call our  
Summer Raffle Hotline on **01628 200 685**

[midlandsairambulance.com/summerraffle](https://midlandsairambulance.com/summerraffle)

Postal closing date: 11th July 2025  
Online closing date: 16th July 2025  
Draw date: 18th July 2025



**GambleAware**

Players must be 18 or over.  
Terms and conditions apply



**Midlands  
Air Ambulance  
Charity®**

Registered Charity Number 1143118

# SUDOKU

Complete the grid so that every row, every column and every 3 x 3 box contains every digit from 1 to 9.

## EASY

4		3	6					2
	8		3	7	4			6
					5		3	7
	6			8	7			9
8				9		6		3
1		9	5					8
2	3					9	4	
			9	4	1	3		
	1	4			6			8

## HARD

7		2			6			
				7		5		8
			1					3
8		9	2					
	3			1	7			4
					9	1		3
	2				8			
9		1		4				
			7			6		4

# PATHFINDER

Beginning with the top highlighted letter, follow a continuous path of words associated with the given subject. The trail goes through each letter once, twisting up, down and sideways, but never diagonally.

## Glastonbury headliners

**T** X E R A T Z R I M S C I C A  
 R E L K V I T P S A L R L L A  
 S I V Y N E H E R R T E M E T  
 C O L E N W H H E E S A M E N  
 T S O P I R I C T P C A M Y T  
 E L L E S T T A E R I N C A R  
 S I S A O S E T E E O H C M L  
 A R I N S A B S E G N I E A D U  
 T C K G A K I A N A D A R P A  
 I I E S O N O N I D E L E N O  
 C W O B F L E F R P S U R C Y  
 M O I D R R O L O R E C B E E  
 K N V A I S M N A E N H E E B  
 E J A D N O C U V E C T M N I  
 Y S Y Z T H E R E A N D A C H

Solutions opposite

# CROSSWORD

1	2	3	4	5	6						
7											
8							9				
10				11	12					13	
14			15		16		17				
18	19			20	21						
22											

## ACROSS

- 7. Great Britain and Northern Ireland (6,7)
- 8. Taciturn (8)
- 9. Competent (4)
- 10. Mild (6)
- 12. Deed (6)
- 14. Roadway (6)
- 16. Tried (6)
- 18. Urge forward (4)
- 20. Way in (8)
- 22. Religious organisation (9,4)

## DOWN

- 1. Concern (8)
- 2. Severe (6)
- 3. Lazy (4)
- 4. Divert (8)
- 5. Horrified (6)
- 6. Labour (4)
- 11. Petition (8)
- 13. Conquer (8)
- 15. Salad plant (6)
- 17. Sailor (6)
- 19. Spoken (4)
- 21. Jog (4)

Scribble pad

# LADDER

Using the clues provided, fill in each step of the ladder with a new word, changing one letter at a time.

- Ale
- Wild animal
- Droplet
- Take charge
- Burden



# NINER

Each number from 1 to 9 represents a different letter. Solve the clues and insert the letters in the appropriate squares to discover a word which uses all nine letters.

- 83412 gives a Swedish actress;
- 5249 gives a British actress;
- 42167927 gives a Romanian-born American actor.

1	2	3	4	5	6	7	8	9
---	---	---	---	---	---	---	---	---

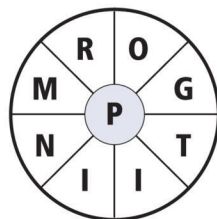
# CODEWORD

This puzzle has no clues. Instead, every number printed in the grid represents a letter, with the same number always representing the same letter. For example, if 8 turns out to be a V, you can write in V wherever a square contains 8. Using your knowledge of words, complete the puzzle.

		12		21		5	14	3	8	16	14	23	26	
A											I			
B	16	19	9	19			1		2			N	17	
C		16		20	25	14	1	11	24			16	2	
D														
E	21	18	10	7					24		17		1	
F														
G				19		22	2	16	16	23	10	17	15	
H														
I	18	13	19	16	11		1		18		3		14	
J														
K	13		4			19	20	11			18		5	
L														
M	8		2			12		16		6	14	12	11	25
N														
O	2	1	18	19	10	1	18	12		22				
P														
Q	1		12			19				14	1	20	25	
R														
S	15	1	2			8	10	19	13	14	5		2	
T	18					18		23			18	19	5	18
U														
V	5	19	11	2	10	19	11	18		5			8	
W														
X	1	2	3	4	5	6	7	8	9	10	11	12	13	
Y	N													
Z	I													

# WORDWHEEL

You have 10 mins to find as many words as possible using the letters in the wheel. Each must use the hub letter and at least 3 others. Letters may be used only once. You cannot use plurals, foreign words or proper nouns. There is at least one 9-letter word to be found.

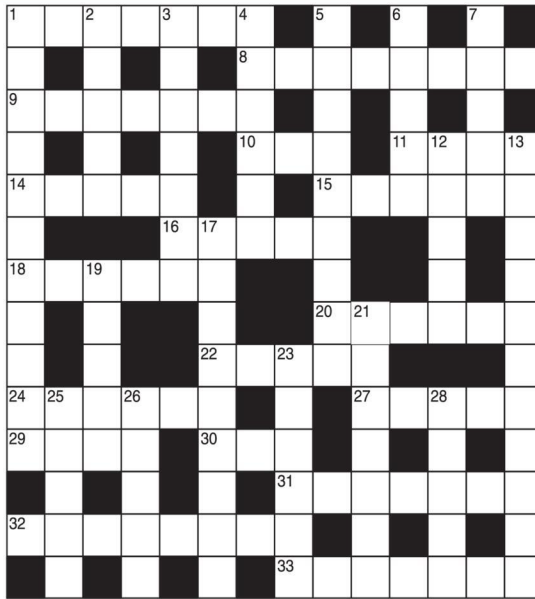


How you rate  
 8 words: average  
 12 words: good  
 16 words: very good  
 20 or more: excellent.

# GENERAL KNOWLEDGE CROSSWORD

## ACROSS

- 1 Cattle-breeding establishments (7)
- 8 An amulet or charm (8)
- 9 Buddhist beatitude (7)
- 10 Surname of an American general born in 1807 (3)
- 11 City famous for the Taj Mahal (4)
- 14 A geological or historical age (5)
- 15 See 18 Across
- 16 Large bird of prey (5)
- 18 & 15 Across Songwriter famous for White Christmas (6,9)
- 20 Kind of four-wheeled carriage (6)
- 22 Snooker or billiards stroke (5)
- 24 Salad plant (6)
- 27 Stocking thread (5)
- 29 Bird such as the corncrake (4)
- 30 & 13 Down Play by GB Shaw (3,3,8)
- 31 Former spelling of the South American republic of which the capital is Paramaribo (7)
- 32 HMS ---, comic opera by Gilbert and Sullivan (8)
- 33 Subdivision of a company, platoon, etc. (7)



## DOWN

- 1 Instrument for estimating the distance of an object (11)
- 2 --- and Knox, 'Crazy Gang' comedians (5)
- 3 Pagan (7)
- 4 German POW camp for NCOs and men (6)
- 5 In southern England, wood hyacinths (9)
- 6 Annual cinema award in various fields (5)
- 7 A people of New Zealand (5)
- 12 Organ of the body (5)
- 13 See 30 Across
- 17 Leader of the Greeks at the siege of Troy (9)
- 19 Composer of operas including Don Carlos and Aida (5)
- 21 Old-English prose writer called Grammaticus (7)
- 23 Sight, hearing, smell, taste and touch are the five --- (6)
- 25 Lowest point of anything (5)
- 26 Work attributed to Homer (5)
- 28 Mount where Moses received the tables of the Law (5)

# SOLUTIONS

19 Verdi; 21 Aeffric; 23 Senses; 25 Nadir; 26 Iliad; 28 Sinal.  
 4 Stalag; 5 Bluebells; 6 Oscar; 7 Maori; 12 Gland; 13 And Superman; 17 Agamemnon;  
 31 Surinam; 32 Pinatone; 33 Section; DOWN: 1 Rangefinder; 2 Nervo; 3 Heathen;  
 16 Eagle; 18 Irving; 20 Landau; 22 Masse; 24 Endive; 27 Lisle; 29 Rail; 30 Man;  
 ACROSS: 1 Ranches; 8 Talisman; 9 Nirvana; 10 Lee; 11 Agra; 14 Epoch; 15 Berlin;

## General Knowledge Crossword

ACROSS: 7 United Kingdom; 8 Retiree; 9 Able; 10 Gentle; 12 Action; 14 Street;  
 4 Distract; 5 Aghast; 6 Toll; 11 Entreaty; 13 Overcome; 15 Endive; 17 Seaman; 19 Oral;  
 21 Tot;

## Crossword

BOARDINGS  
 Niner  
 IMPORTING  
 Wordwheel Pathfinder

1=N, 2=U, 3=M, 4=Q, 5=S, 6=W, 7=K, 8=P, 9=V,  
 10=R, 11=L, 12=D, 13=X, 14=L, 15=G, 16=L,  
 17=O, 18=E, 19=A, 20=C, 21=L, 22=B, 23=F,  
 24=Z, 25=H, 26=Y

3	8	5	7	2	1	6	9	4
9	7	1	6	4	3	8	2	5
6	2	4	9	5	8	3	7	1
2	4	7	5	6	9	1	8	3
5	3	6	8	1	7	9	4	2
8	1	9	2	3	4	7	5	6
4	6	8	1	9	5	2	3	7
1	9	3	4	7	2	5	6	8
7	5	2	3	8	6	4	1	9

Hard

9	1	4	2	3	6	5	7	8
7	5	8	9	4	1	3	6	2
2	3	6	7	5	8	9	4	1
1	2	9	5	6	3	7	8	4
8	4	7	1	9	2	6	5	3
3	6	5	4	8	7	2	1	9
6	9	1	8	2	5	4	3	7
5	8	2	3	7	4	1	9	6
4	7	3	6	1	9	8	2	5

Easy  
 Sudoku



CoventryObserver.co.uk

Leamington Observer

Rugby Observer

# It's time to Like, Follow & Subscribe

Don't be LEFT BEHIND.....

# BREAKING NEWS WHAT'S ON SPORT INTERVIEWS

-  CoventryObserver
-  LeamingtonObserver
-  RugbyObserver

-  @CovObserverNews
-  @LeamObs
-  @RugbyObserver

-  CovObserver
-  Leamington.Observer
-  Rugby.Observer

# Check out our E-Editions!

**Coventry Observer** .co.uk

Thu, April 20, 2017 11:32 AM

## Upgraded route set to improve

**By Pauline**

A new and upgraded route for the Coventry Observer's Coventry edition will be available from Friday, June 13, 2025. The new route will be available on the Coventry Observer's website and on the Coventry Observer's mobile app. The new route will be available on the Coventry Observer's website and on the Coventry Observer's mobile app. The new route will be available on the Coventry Observer's website and on the Coventry Observer's mobile app.

**Gain Much Needed Extra Space With Our New Offer For Your Family And Friends**

**Windows Plus**

Windows | Doors | Conservatories | Porches | Fascias & Soffits

CALL US TODAY FOR A QUOTE ON OUR BEST PRICE 02476 230222

WWW.WINDOWS-PLUS.CO.UK

The Coventry Observer brings you the news free of charge every week

**Rugby & Lutterworth Observer**

Thu, April 20, 2017 11:32 AM

## Izzy did her to

**By Pauline**

Izzy did her to... (The rest of the article text is obscured by a grey box)

**DRIVES4U**

Are you looking to improve your driveway?

We can provide you with a free quote for your driveway in Coventry, Bromsgrove, Redditch, Leamington, Warwick, Stratford, Rugby, Nuneaton, and Leamington.

5 Year Guarantee

- We've designed and built just about every shape and size of driveway and patio you can imagine, so we will not be phased by your project.
- We offer a lifetime 100% satisfaction and unlike other driveway companies, we do not provide any aftercare.
- Give us a call and you could save up to 1500!

Tel: 0800 3032559 | Mob: 07773 911552 | www.drives4u.co.uk

Championing the needs of Rugby residents since 1991 and delivering the news to you every week

**Leamington Observer** Incorporating Warwick, Whitnash and Kenilworth

Thu, April 20, 2017 11:32 AM

## Homes to a re

**By Pauline**

Homes to a re... (The rest of the article text is obscured by a grey box)

**DRIVES4U**

Are you looking to improve your driveway?

We can provide you with a free quote for your driveway in Coventry, Bromsgrove, Redditch, Leamington, Warwick, Stratford, Rugby, Nuneaton, and Leamington.

5 Year Guarantee

- We've designed and built just about every shape and size of driveway and patio you can imagine, so we will not be phased by your project.
- We offer a lifetime 100% satisfaction and unlike other driveway companies, we do not provide any aftercare.
- Give us a call and you could save up to 1500!

Tel: 0800 3032559 | Mob: 07773 911552 | www.drives4u.co.uk

Keep up with all the latest news, sport and entertainment from around the area at www.leamingtonobserver.co.uk

[www.coventryobserver.co.uk/editions](http://www.coventryobserver.co.uk/editions)  
[www.rugbyobserver.co.uk/editions](http://www.rugbyobserver.co.uk/editions)  
[www.leamingtonobserver.co.uk/editions](http://www.leamingtonobserver.co.uk/editions)

The same paper you love on your **mobile, tablet and computer**

# Motoring

[www.carfinder247.co.uk](http://www.carfinder247.co.uk)

TELEPHONE 01926 451900 FACSIMILE 01527 584371



## Kia set to launch new Sportage

**THE NEW Kia Sportage has been revealed in Europe in its latest iteration.**

The new model features extensive enhancements in design, innovation, technology and convenience, and sets new standards in the competitive compact SUV segment.

The new Sportage offers both petrol and hybrid (HEV) powertrains from launch. The shortened wheelbase has been developed to meet the preferences of European SUV customers without compromising on interior space.

Sjoerd Knipping, COO at Kia Europe, said: "With a fully upgraded package, ready for every adventure, the most refined Sportage ever appeals to a wide variety of consumers, including our legacy customers, as it offers new levels of versatility, convenience and comfort."

Kia's 'Opposites United' design philosophy gives the Sportage a striking new look. Smooth, soft surfaces are combined with rugged forms and a powerful stance. The new front and rear bumpers

create a strong silhouette, with eye-catching LED Star Map lighting and Kia's distinctive tiger nose grille. The new wheel design is available as 17-inch, 18-inch, and 19-inch, with exclusive 18-inch and 19-inch versions for 'GT-Line' and 'GT-Line S' models.

The interior offers ample room for everyone on board. The steering wheel features a new two-spoke design, while the updated crash pad and hidden air vents create a sleek, minimalist finish. New seat covers add further comfort, with 'GT-Line' and 'GT-Line S' variants offering a stylish black and white interior in artificial leather and suede.

Together with Dinamica®, Kia has integrated a responsible fabric in the interior of the Sportage. Dinamica's premium non-woven microfibre suede is featured in the door and seat insert in the 'GT-Line' as standard and in the door inserts and seat boosters as an option.

The Sportage continues to offer a spacious interior and flexible cargo room, with more than one metre of rear legroom for passengers in the second row. Rear cargo capacity up to 587 litres, and up to 1,776 litres

with the second-row seats folded, enable customers to take everything they need for day trips and longer journeys. The dual-level cargo floor available on the HEV provides flexible cargo carrying capabilities.

Central to the enhanced driving experience in the Sportage is the Connected Car Navigation Cockpit (CCnC), featuring dual 12.3-inch curved panoramic displays and a new 10-inch head-up display (HUD). All functions and information are placed within easy access and viewing for the driver, including driver assistance systems, infotainment and turn-by-turn directions.

Connectivity and in-car options are further enhanced with wireless Apple CarPlay™ and Android Auto™. Kia Connect and OTA updates can access specific features and services, check the vehicle lock status, plan routes and more. The Sportage's Feature-on-Demand (FOD) platform allows drivers to add arcade games, YouTube, other video streaming services via the WebOS, as well as new display themes to the infotainment system.

Through Kia In-Car Payment, drivers can conveniently pay for

on-street parking directly from their car, while the available Wi-Fi Hotspot connects up to five devices to 4G LTE-based internet. Connected Routing calculates the optimal route using live and predicted traffic based on historical information to learn the preferred routes of customers. The available Digital Key 2.0 offers the ability to access the vehicle using smart devices without needing to carry a physical key, while it's also possible to share the digital key with family and friends. In addition, the vehicle features a Harman Kardon premium audio system.

The enhanced Sportage offers a choice of petrol and hybrid (HEV) powertrains from launch, giving customers a choice of hybrid powertrains that best suits their needs. Sportage offers more dynamic driving thanks to a powerful turbo hybrid powertrain, a new generation transmission, the vehicle's aerodynamic design and a low centre of gravity.

The new Sportage is expected to arrive in Kia showrooms in the third quarter of 2025. Full UK pricing and specifications will be announced

closer to its on-sale date.



**DAVE'S ENGINE CENTRE**  
PRECISION ENGINE RE-MANUFACTURERS

**PROBLEMS WITH YOUR ENGINE?**  
FREE Advice and Quotes

All Car, Agricultural and Commercial Engine Work

Full Machine Shop Facilities  
Cylinder Head Re-facing  
Crankshaft Regrinding  
Pressure Testing  
Reboring and Liner Fitting

**Engine Parts at LOW PRICES**

Does your **VINTAGE VEHICLE** need work?

Tel 01527 854968 / 07730 874527  
Email : sales@engine-centre.co.uk  
[www.engine-centre.co.uk](http://www.engine-centre.co.uk)  
Studley, B80 7AP

**FREE LOCAL COLLECTION**  
for trade customers

# Classified

TELEPHONE 01527 588688 FACSIMILE 01527 584371

## PUBLIC NOTICES

### PUBLIC NOTICES

**Warwickshire County Council**

**ROAD TRAFFIC REGULATION ACT 1984**  
Warwickshire County Council has made the following Temporary Traffic Orders:

**BIRDINGBURY ROAD, HILL**  
Order Effect: Road closed to vehicular traffic.  
Reason for Order: To enable installation of a marker post.  
Order Commences: 17 June 2025 for up to 18 months.  
Anticipated Completion: 18 June 2025.  
Access & Diversion: Southam Road, Stockton Road, Birdingbury Road and vice versa.  
Contractor: Chevron TM Ltd, Tel: 03300 080 820.

**CHURCH STREET, MARTON**  
Order Effect: Road closed to vehicular traffic.  
Reason for Order: Works to install a new water connection.  
Order Commences: 19 June 2025 for up to 18 months.  
Anticipated Completion: 20 June 2025.  
Access & Diversion: Church Street, North Street, Shepherd Street and vice versa.  
Contractor: Go Traffic Management, Tel: 01158 965 832.

**THE LOCKS, HILLMORTON, RUGBY**  
Order Effect: Road closed to vehicular traffic.  
Reason for Order: To enable works for new utility supply.  
Order Commences: 16 June 2025 for up to 18 months.  
Anticipated Completion: 18 June 2025.  
Access & Diversion: No diversion available.  
Contractor: For National Grid, Network Plus, Tel: 08006 783 105.

Warwickshire County Council proposes to make the following Temporary Traffic Orders:

**CRICK ROAD, HILLMORTON, RUGBY**  
Order Effect: Road closed to vehicular traffic.  
Reason for Order: To enable detailed bridge examination, overnight 23.00hrs-06.00hrs.  
Order Commences: 28 June 2025 for up to 18 months.  
Anticipated Completion: 29 June 2025.  
Access & Diversion: Crick Road, A5 Watling Street, Central Park Drive, Newbold Road, Evreux Way, Corporation Street, Warwick Street, Lawrence Sheriff Street, Hillmorton Road, Ashlawn Road, High Street and vice versa.  
Contractor: Centurion TM, Tel: 01132 775 360.

**KNOB HILL, STRETTON-ON-DUNSMORE**  
Order Effect: Road closed to vehicular traffic.  
Reason for Order: To enable works to install a hydrant.  
Order Commences: 30 June 2025 for up to 18 months.  
Anticipated Completion: 2 July 2025.  
Access & Diversion: Fosse Way, Brookside, Knob Hill and vice versa.  
Contractor: Chevron TM Ltd, Tel: 03300 080 820.

For all of the above temporary orders, pedestrian access to and egress from properties and land situated adjacent to the length of road to be closed will be maintained at all times. Vehicular access will be maintained where possible.

To report any problems with these works or for further details of our current & planned roadworks visit our website [warwickshire.gov.uk/roadworksmap](http://warwickshire.gov.uk/roadworksmap) or call us 01926 412515.

S Duxbury, Director of Strategy, Planning & Governance,  
Shire Hall, Warwick CV34 4RL Date 13 June 2025

### PUBLIC NOTICES

**Warwickshire County Council**

**ROAD TRAFFIC REGULATION ACT 1984**  
Warwickshire County Council has made the following Temporary Traffic Orders:

**GREEN END, LONG ICHINGTON**  
Order Effect: Road closed to vehicular traffic.  
Reason for Order: To enable works for boundary box and meter installation.  
Order Commences: 16 June 2025 for up to 18 months.  
Anticipated Completion: 17 June 2025.  
Access & Diversion: No diversion available.  
Contractor: Chevron TM Ltd, Tel: 03300 800 820.

Warwickshire County Council proposes to make the following Temporary Traffic Orders:

**HARBURY LANE, BISHOPS ITCHINGTON**  
Order Effect: Road closed to vehicular traffic from its junction with Oakley Wood Road.  
Reason for Order: To enable safe access the underground structure for new cabling.  
Order Commences: 30 June 2025 for up to 18 months.  
Anticipated Completion: 9 July 2025.  
Access & Diversion: Tachbrook Road, High Street, Radford Road, Southam Road, Fosse Way, Harbury Lane and vice versa.  
Contractor: Sunbelt Rentals Ltd, Tel: 03700 500 792.

**HARBURY ROAD, LADBROKE**  
Order Effect: Road closed to vehicular traffic from outside Barry Chin Associates Ltd.  
Reason for Order: To enable safe access for overhead cabling works.  
Order Commences: 1 July 2025 for up to 18 months.  
Anticipated Completion: 1 July 2025.  
Access & Diversion: Harbury Road, Church Road, School Lane, Banbury Road, Southam Road, Leamington Road, Kineton Road, Station Road and vice versa.  
Contractor: Sunbelt Rentals Ltd, Tel: 03700 500 792.

**POPLAR ROAD, BISHOPS ITCHINGTON**  
Order Effect: Road closed to vehicular traffic from a point outside property number 19.  
Reason for Order: To enable works to install a new gas connection.  
Order Commences: 28 June 2025 for up to 18 months.  
Anticipated Completion: 29 June 2025.  
Access & Diversion: Chapel Street, Fisher Road, Poplar Road and vice versa.  
Contractor: Cadent Gas, Tel: 0800 111 999.

**THORN WAY, LONG ICHINGTON**  
Order Effect: Road closed to vehicular traffic.  
Reason for Order: To enable works for installation of a boundary box and meter.  
Order Commences: 3 July 2025 for up to 18 months.  
Anticipated Completion: 4 July 2025.  
Access & Diversion: There is no available diversion.  
Contractor: Chevron TM Ltd, Tel: 03300 080 820.

For all of the above temporary orders, pedestrian access to and egress from properties and land situated adjacent to the length of road to be closed will be maintained where possible.

To report any problems with these works or for further details of our current & planned roadworks visit our website [warwickshire.gov.uk/roadworksmap](http://warwickshire.gov.uk/roadworksmap) or call us 01926 412515.

S Duxbury, Director of Strategy, Planning & Governance,  
Shire Hall, Warwick CV34 4RL Date 13 June 2025

### PUBLIC NOTICES

**Warwickshire County Council**

**ROAD TRAFFIC REGULATION ACT 1984**  
Warwickshire County Council has made the following Temporary Traffic Orders:

**MAIN ROAD, ANSTY**  
Order Effect: Road closed to vehicular traffic.  
Reason for Order: To enable relay valve box works.  
Order Commences: 16 June 2025 for up to 18 months.  
Anticipated Completion: 18 June 2025.  
Access & Diversion: Hinckley Road, A46, Coventry Eastern Bypass, Woodway Lane, Henley Road, Old Church Road, Hall Green Road, Aldermans Green Road, Parrotts Grove, Mile Tree Lane, Coventry Road, School Road, New Street, Rugby Road, Shilton Lane, Bulkington Road, Church Road, Main Road and vice versa.  
Contractor: Headway TM, Tel: 01564 820 118.

Warwickshire County Council proposes to make the following Temporary Traffic Orders:

**BURROW HILL LANE, CORLEY**  
Order Effect: Road closed to vehicular traffic from its junction with Rock Lane.  
Reason for Order: To enable duct laying works.  
Order Commences: 1 July 2025 for up to 18 months.  
Anticipated Completion: 14 July 2025.  
Access & Diversion: Bennetts Road North, Rock Lane and vice versa.  
Contractor: Callan Connect, Tel: 01213 275 167.

**ROCK LANE, CORLEY**  
Order Effect: Road closed to vehicular traffic.  
Reason for Order: Works to lay duct in the carriageway and verge.  
Order Commences: 1 July 2025 for up to 18 months.  
Anticipated Completion: 14 July 2025.  
Access & Diversion: Bennetts Road North, Highfield Lane, Tamworth Road and vice versa.  
Contractor: Callan Connect, Tel: 01213 275 167.

For all of the above temporary orders, pedestrian access to and egress from properties and land situated adjacent to the length of road to be closed will be maintained at all times. Vehicular access will be maintained where possible.

To report any problems with these works or for further details of our current & planned roadworks visit our website [warwickshire.gov.uk/roadworksmap](http://warwickshire.gov.uk/roadworksmap) or call us 01926 412515.

S Duxbury, Director of Strategy, Planning & Governance,  
Shire Hall, Warwick CV34 4RL Date 13 June 2025

### PUBLIC NOTICES

**PEGGY MARGARET COLE (Deceased)**  
Pursuant to the Trustee Act 1925 any persons having a claim against or an interest in the Estate of the above named, late of 1 Hassall Close, Bishop's Tachbrook, Leamington Spa, CV33 9PU, who died on 22/12/2021, are required to send written particulars thereof to the undersigned on or before 14/08/2025, after which date the Estate will be distributed having regard only to the claims and interests of which they have had notice.

Angels Solicitors LLP, 117-119 New Union Street, Coventry, CV1 2NY

### PUBLIC NOTICES

**LINDA ANN TRIBE (Deceased)**  
Pursuant to the Trustee Act 1925 any persons having a claim against or an interest in the Estate of the above named, late of 14 Golden Close Kineton Warwick, CV35 0FD, who died on 31/03/2025, are required to send written particulars thereof to the undersigned on or before 14/08/2025, after which date the Estate will be distributed having regard only to the claims and interests of which they have had notice.

PENMANS SOLICITORS LLP, The Precinct, School Road, Wellesbourne Warwickshire, CV35 9NL

### PUBLIC NOTICES

**Rugby Borough Council**  
Town and Country Planning Act 1990 (as amended)

**Application Number R25/0394**  
2 CHURCH STREET, RUGBY, CV21 3PH  
Change Of Use of First Floor Offices to 1 Bed Flat & Second Floor Offices to Bedsit Including Rear Extension.  
This development may affect a Conservation Area

**Application Number R25/0417**  
DERMOMEDIX LIMITED STABLE COTTAGE, WREN COURT, FRANKTON ROAD, BIRDINGBURY, RUGBY, CV23 8EW  
Listed Building consent for replacement double glazed wooden framed windows.  
This development may affect a Listed Building

Members of the public may inspect copies of the application, the plans and documents submitted with it online at: [www.planningportal.rugby.gov.uk](http://www.planningportal.rugby.gov.uk) or in an electronic form at: Town Hall, Evreux Way, Rugby, CV21 2RR between the hours of 9.00 am and 5.00 pm Monday to Friday until 04 July 2025. Please note a planning officer would not be present. If you wish to make an appointment to discuss the application, please contact the case officer.

Any person who wishes to make representation to the above mentioned Council about the applications should make them online – [www.planningportal.rugby.gov.uk](http://www.planningportal.rugby.gov.uk) (search for application number and select comment) – or in writing by that date to Chief Officer – Growth and Investment, Town Hall, Rugby, CV21 2RR.

If an application is determined by the Planning Committee, members of the public may have the opportunity to speak at the meeting. More details about public speaking are available from the Council or on-line at: [www.rugby.gov.uk/speakingatplanning](http://www.rugby.gov.uk/speakingatplanning)

For household or minor commercial applications, in the event of an appeal against a refusal of planning permission, dealt with on the basis of representations in writing, any representations made will be sent to the Secretary of State, and there will be no further opportunity to comment at the appeal stage.

Nicola Smith  
Chief Officer – Growth and Investment  
MRTPI

### PUBLIC NOTICES

**JEAN ROBERTA BROWN HALL (Deceased)**  
Pursuant to the Trustee Act 1925 any persons having a claim against or an interest in the Estate of the above named, late of 33 Courtest Road, Coventry, CV3 5GS, who died on 14/01/2025, are required to send written particulars thereof to the undersigned on or before 14/08/2025, after which date the Estate will be distributed having regard only to the claims and interests of which they have had notice.

Penmans Solicitors LLP, 17A Queens Road, Coventry, CV1 3DH

### PUBLIC NOTICES

**BEVERLY ANNE OSBORNE (Deceased)**  
Pursuant to the Trustee Act 1925 any persons having a claim against or an interest in the Estate of the above named, late of 27 Carver Close Coventry, CV2 5NJ, who died on 08/07/2024, are required to send written particulars thereof to the undersigned on or before 14/08/2025, after which date the Estate will be distributed having regard only to the claims and interests of which they have had notice.

WARD & RIDER, 2 Manor Yard New Union Street Coventry CV1 2PF

### PUBLIC NOTICES

**NOTICE OF MAKING A PUBLIC PATH ORDER TOWN AND COUNTRY PLANNING ACT 1990 SECTION 257 RUGBY BOROUGH COUNCIL THE BOROUGH OF RUGBY (PART OF FOOTPATH R235 DIPBAR FIELD, DUNCHURCH) PUBLIC PATH ORDER 2025**

The above Order made on the 12 June 2025 under Section 257 of the Town and Country Planning Act 1990 will:

Stop up part of footpath from Point A (Grid reference 450243 271173) north for approximately 3.2 metres to Point B (Grid reference 450241 271171), south easterly for approximately 188 metres to Point H (Grid reference 450371 271013), south for approximately 22 metres to Point G (Grid reference 450302 271023) and create a new footpath from Point A (Grid reference 450243 271173) south westerly for approximately 49 metres to Point C (Grid reference 450210 271139), curving slightly easterly for approximately 8.8 metres to Point D (Grid reference 450216 271134), easterly for approximately 132 metres to Point E (Grid reference 450253 271099), turning southerly for approximately 46 metres to Point F (Grid reference 450317 271065), finally turning easterly for approximately 71 metres to Point G (Grid reference 450302 271023)

A copy of the Order and the order map can be viewed free of charge at the Town Hall, Evreux Way, Rugby, CV21 2RR, during office opening hours (9am to 5pm, Monday to Friday). It can also be viewed on the Council's website: [www.rugby.gov.uk/R235](http://www.rugby.gov.uk/R235)

Copies of the Order Map can be purchased, priced £5.

Any representations about, or objections to, the Order may be sent in writing to the Chief Officer for Legal and Governance, Rugby Borough Council, Town Hall, Evreux Way, Rugby, CV21 2RR no later than 11 July 2025 and should state the grounds on which they are made.

If no such representations or objections are duly made, or if any so made are withdrawn, Rugby Borough Council may confirm the order as an unopposed order. If the order is sent to the Secretary of State for the Environment, Food and Rural Affairs for confirmation, any representations and objections which have not been withdrawn will be sent with the Order.

Dated 13 June 2025

Authorised officer on behalf of the Council  
The Officer appointed for this purpose

### PUBLIC NOTICES

**Notice of Cancellation of Registration (Friendly Societies Act 1974 s.91)**

Notice is hereby given that the Financial Conduct Authority has this day cancelled the registration of Green Lane Ex Services Club (Register no. 1439 W) the registered office of which is at Club Premises, Leasowes Avenue, COVENTRY, CV3 6BH. The grounds of the cancellation are that the society has wilfully violated section 43 of the Friendly Societies Act 1974 by not submitting to the Authority any annual returns acceptable for filing since that submitted for the society's financial year ending 2017-2023.

The society ceases to be entitled to the privileges of a registered society, but without prejudice to any liability incurred by the society, which may be enforced against it as if such cancellation had not taken place.

Date: 29 May 2025

## PUBLIC NOTICES

Keeping you up to date with all the latest information on Planning Proposals, Traffic Notices, Goods Vehicle Operator Licences, Licences To Sell Alcohol, Probate Notices....

### PUBLIC NOTICES

**PETER HUGH PHIZACKERLEY (Deceased)**  
Pursuant to the Trustee Act 1925 any persons having a claim against or an interest in the Estate of the above named, late of Homewood Care Home, 40 Kenilworth Road, Leamington Spa, CV32 6JF Formerly of 42 Wilton Court, Southbank Road, Kenilworth, Warwickshire, CV8 1RX, who died on 14/09/2024, are required to send written particulars thereof to the undersigned on or before 14/08/2025, after which date the Estate will be distributed having regard only to the claims and interests of which they have had notice.

PENMANS SOLICITORS LLP, The Precinct Wellesbourne Warwick CV35 9NL

**PUBLIC NOTICES**

All your latest information on  
Planning Proposals, Traffic  
Notices, Goods Vehicle Operator  
Licences To Sell  
Alcohol and Probate Notices

# Classified

TELEPHONE 01527 588688 FACSIMILE 01527 584371

**ANNOUNCEMENTS**      **SALES & WANTS**      **SERVICES**

**DEATHS**

**Sally Lee**  
(nee Gilpin)  
Aged 85  
Died 29th May 2025 of Alzheimers  
Funeral on 25th June at 1pm  
at Banbury Crematorium, OX16 1ST  
Family Flowers only,  
charitable donations to  
Great Ormond street Childrens hospital  
or  
Coeliac UK

If you have a message for a loved one, call our team on  
**01527 588688**



**MISCELLANEOUS**

**RECLINER CHAIR** electric rise & recline £169 Manual recline chair £60 High seated chair £40 Can deliver 07703 925662  
**BEDS NEW** Doubles £95 Singles £59 King size £159. Second hand doubles £49 Singles £29 Fridges £49 Freezers £59 Can deliver 07703 925662  
**STARSKY & Hutch** complete 1st and 2nd series, mint condition. Ten discs / 47 episodes. £18 Tel: 07813 706 158 (Shirley area)  
**PEACOCKS** black skirt, size 10, new! £10 Tel: 07813 706 158 (Shirley area)  
**WAREHOUSE** long blue skirt, size 18, new! £10 Tel: 07813 706 158 (Shirley area)  
**KEEPING up Appearances** Series 3 and 4 plus Christmas Special dvd box set £10 Tel: 07813 706 158 (Shirley area)  
**STAIRGATE** £5 Tel 07503 156699

**WANTED**

**\*\*WANTED: Vinyl Records CDs Cassettes Vintage or New\*\***  
Seeking classic rock, jazz, indie and rare finds. Cash paid  
Call or text: 07765 142354 Or 01527 893992  
Or email: welston@live.com  
Paul (Albatross & Doomed Records)

**CONSERVATORIES & GLAZING**

**DOUBLE GLAZING REPAIRS**  
Locks, Hinges, Handles, Glass, Windows or Doors  
New Doors/Windows  
Also Supplied/Fitted  
**07973 200 623**

**DRIVEWAYS**

**COVENTRY DRIVEWAYS**  
• Block paving • Slabs • Fencing • Gravel  
• Turf & Artificial Grass • Decking, Steps and more  
7 Years Warranty on all projects  
Payment only after completion  
**02476 274439 07740 101227**  
www.spanglefish.com/coventrydriveways

**PROBLEM? LOOK NO FURTHER!**  
Our Classified pages are full of Experts waiting to help!  
Give them a call!

**GARDENING SERVICES**

**STUART'S GARDENING SERVICES**  
Landscaping & Tree Surgery  
Fencing, Slabbing, Turfing, Block Paving, Bases, Mowing, Decking, Roofing and Guttering.  
Mini-digger/Dumper  
Fully Insured. Registered carrier of waste.  
**FREE ESTIMATES**  
**02476 305992 • 07813 790889**  
**01788 211064**  
www.stuarts-gardening-services.yolaite.com

**HOME IMPROVEMENTS**

**HANDY MAN**  
If you're looking for a fast and reliable service  
Then call Lenny  
• Plastering • Plumbing • Fencing  
• Gardening • Flooring • Kitchens  
• Bathrooms • Carpentry • Flat pack furniture  
• Tiling • Painting  
**02476 443 996**  
**07794 784 266**  
NO VAT CHARGE

**KITCHENS**

**S.W INSTALLATIONS**  
**Kitchens & Bathrooms**  
**FREE DESIGN & QUOTATION**  
**QUALITY KITCHENS & BATHROOMS SUPPLIED & FITTED**  
**PLUMBING, CARPENTRY, TILING, WORKTOP & DOOR REPLACEMENT**  
(Supply & fit, supply only or fit only)  
**LOCAL TRADESMAN 20YRS EXPERIENCE**  
**NO JOB TOO SMALL**  
**01926 773386 or 07971 684 353**



**CLEAN in TOUCH**

**We love hearing from you!**  
TO SUBMIT A FREE ADVERT PLEASE EMAIL  
**freeads@bullivantmedia.com**

**Coventry Observer**.co.uk  
**Website:** www.CoventryObserver.co.uk  
**Online Newspaper:** www.CoventryObserver.co.uk/editions  
**Facebook:** www.facebook.com/CovObserver  
**Twitter:** www.twitter.com/coobservernews  
**Instagram:** www.instagram.com/coventryobserver  
**NEWSDESK:** **01527 588657**  
 Editor: Tristan Harris - editor@coventryobserver.co.uk  
**ADVERTISING:** **01926 317111**  
 National & Agency: Medialforce - 0207 832 1649  
 Email: adverts@coventryobserver.co.uk  
**SPORTSDESK:** **01527 588659**  
 Sport: sport@coventryobserver.co.uk

**Leamington Observer**  
**Website:** www.LeamingtonObserver.co.uk  
**Online Newspaper:** www.LeamingtonObserver.co.uk/editions  
**Facebook:** www.facebook.com/leamington.observer/  
**Twitter:** www.twitter.com/leamobs  
**NEWSDESK:** **01527 453737**  
 Editor: editor@leamingtonobserver.co.uk  
**ADVERTISING:** **01926 317140**  
 National & Agency: Medialforce - 0207 832 1649  
 Email: adverts@leamingtonobserver.co.uk  
**SPORTSDESK:** **01527 588659**  
 Sport: sport@leamingtonobserver.co.uk

**Rugby & Lutterworth Observer**  
**Website:** www.RugbyObserver.co.uk  
**Online Newspaper:** www.RugbyObserver.co.uk/editions  
**Facebook:** www.facebook.com/rugby.observer  
**Twitter:** www.twitter.com/RugbyObserver  
**NEWSDESK:** **01527 453737**  
 Editor: editor@rugbyobserver.co.uk  
**ADVERTISING:** **01527 453743**  
 National & Agency: Medialforce - 0207 832 1649  
 Email: adverts@rugbyobserver.co.uk  
**SPORTSDESK:** **01527 588659**  
 Sport: sport@rugbyobserver.co.uk

**CRS LTD**  
 Spring Lane South, Malvern WR14 1AT  
 ATF's are the **ONLY** legal way to scrap your vehicles  
**BUYERS**  
 of all SCRAP Metals and SCRAP Vehicles  
 The **ONLY** authorised treatment facility in Malvern!  
 Best Prices Paid • Collection & Skip Drops Farm  
 Equipment, Copper, Brass etc. • 50 Ton Weigh Bridge  
**ID REQUIRED - 01684 578081**  
 www.crs-malvern.co.uk

# Observer SPORT



9 772040 128006  
 Published by Bullivant Media Group Ltd, Webb House,  
 Church Green East, Redditch, Worcestershire, B96 8BP  
 Printed by Newsquest, Newspaper House, Osney  
 Mead, Oxford, Oxfordshire, OX2 0EJ

**VINYL RECORDS WANTED**  
 Buying since 1978  
 Get your cash TODAY!  
 I will come to you  
**Phone PAUL**  
**01527 893992 | 07765 142354**

www.rugbyobserver.co.uk

BRINGING YOU ALL THE LATEST SPORTS NEWS AND VIEWS FROM THE AREA

## Relegation reprieve as Valley avoid drop

by Aaron Sutcliffe  
 aaron.sutcliffe@bullivantmedia.com

**FOOTBALL:** RUGBY Town have accepted a reprieve from relegation and will remain in the Northern Premier League Midlands next season.

The FA handed Valley a reprieve after NPL Midlands club Hinckley Leicester Road withdrew from the division after entering voluntary liquidation.

This created a vacancy at Step Four which Rugby will fill despite suffering relegation last term.

After assessing the options available, the FA's Step One to Four operational committee offered the vacant spot to Valley, as the highest-placed

relegated side from the division.

Rugby director, Neil Melvin said: "We're delighted to have been given the chance to remain at this level and thank the NPL and the FA Committee for their swift and pragmatic approach."

"The situation has developed quickly but we're confident we have the people in place to adapt and build a competitive squad for the NPL Midlands."

"It's a surprise and a welcome lift after the disappointment of last season and we now move forward with real focus and ambition."

The FA initially allocated Rugby a place in the United Counties League Premier Division South for the 2025/26 season.

Former boss Ian King resigned from his role following the club's relegation with Grant Joshua replacing him

in the Butlin Road dugout.

The club have already made a number of signings ahead of the new campaign.

And despite planning for life back in the UCL Premier Division South, Valley want to embrace the opportunity of remaining at Step Four.

A club statement said: "While planning had already begun for life in the United Counties League again, the management team and board are united in embracing this opportunity and preparations are now underway for a fresh challenge in the NPL Midlands."

"We recognise that Hinckley Leicester Road's withdrawal has brought a difficult and sudden end to the club in its current form and we extend our thoughts to the players, volunteers, supporters, suppliers and others affected by the club's demise."



Lauren Henry in action at the 2025 European Rowing Championships. Picture by Benedict Tufnell/British Rowing.

## Henry to race for GB in World Cup

**ROWING:** RUGBY'S Lauren Henry has earned a place in the Great Britain squad for the upcoming World Rowing Cup in Varese, Italy.

Henry recently won European Championship gold in the women's single sculls event in Plovdiv, Bulgaria.

The 23-year-old set a European best time and British record in the heats before storming to victory in the semi-final and final to take gold.

Britain have selected 48 athletes for the World Rowing Cup which takes place from June 13 to 15.

British Rowing director, Louise Kingsley said: "With this back-to-back block of racing, we are looking forward to seeing how these nations have moved on over the winter and how the European nations build on from Plovdiv."

Henry will again compete in the single sculls event.

# CASHBROKERS

LEAMINGTON SPA

PAWNBROKING LOANS  
 SCRAP GOLD & SILVER  
 BUY BACK  
 JEWELLERY & WATCHES  
 COINS & BULLION

**CASH PAID**  
**FOR GOLD, SILVER,**  
**COINS & BULLION**



**01926 258252**

144 Parade, Leamington Spa, CV32 4AG

www.cashbrokersleamingtonspa.co.uk

