

**WANTED**  
**Motorcycles and Scooters**  
 Any cc, condition or age,  
 good prices paid  
 07944 781 933 | 01926 257 643

# County's teenage leader fails to ditch Pride flag

## MPs voice 'priority' concerns

by **Philippa Mingins**  
 philippa.mingins@bullivantmedia.com

THE TEENAGE interim leader of Warwickshire County Council is flagging up his first concern.

Coun George Finch, 18, appointed to the top job following the resignation of former Reform leader Coun Rob Howard due to 'health challenges' last week, ordered a Pride flag flying outside the council's headquarters in Warwick to be taken down in line with Reform UK's policy of only flying British flags.



But the demand was rejected by WCC chief executive Monica Fogarty who said that throughout and before her tenure in the job, the flags had always been flown at Shire Hall during Pride month.

She claimed she had already made an agreement with Coun Howard that both the St George's flag and the Pride flag would be flown, before he resigned.

Coun Finch (pictured), who only recently switched allegiance from the Conservatives to Reform UK, has become the youngest council

leader in the UK. He took over from Mr Howard, who quit his post with immediate effect just five weeks after the party's success in the May local elections which saw it form a minority administration in Warwickshire for the first time.

In a brief statement, Mr Howard said the decision was made "with much regret".

He continued: "The role of leader is an extremely demanding role and regrettably my health challenges now prevent me from carrying out the role to the level and standard that I would wish."

On the New Reformer website, Coun Finch, who represents Bedworth Central, outlines his views under three core themes - 'Brexit, sovereignty and a strong and united family unit'.

He will continue as acting leader until a permanent replacement is chosen.

Coun Finch said: "As interim leader I will ensure that this council is in steady hands until a new leader is elected by the group so that we can deliver meaningful results for Warwickshire. Our mission to deliver for residents remains unchanged."

Both Stratford Lib Dem MP Manuela Perteghella and Warwick and Leamington Labour MP Matt Western have voiced concerns about the future governance of WCC.

Mr Western added: "The public want good services which deliver for them. I can guarantee that one hundred times more residents wake up every day concerned about adult social care provision than they do concerned about what flag is outside Shire Hall."



Mayor Barbara Brown joins Philip Corbould (Community Connector), Kirsten Lord (Services Manager), Chris Saunders (Partnership Manager) and MP John Slinger at the launch of Change Grow Live's new Recovery Hub. Picture by Marcus Mingins 2625009MMR

**HUB TO OFFER SUPPORT:** A NEW hub to help people recover from substance abuse has opened in Rugby.

Change Grow Live (CGL) has refurbished the space above its current venue in Albert Street into a Recovery Hub to support local service users' ongoing rehabilitation by providing a range of activities.

The hub was officially opened at a launch event last week, giving stakeholders a chance to meet the teams and find out what services they offer, attend presentations and educational sessions, experience a sound bath and mindfulness sessions, and learn more about CGL's new partner-

ship with Intuitive Thinking Skills (ITS) and their Ambassador Programme.

Warwickshire Partnership Manager for CGL, Chris Saunders, said: "It was a hugely successful and enjoyable day attended by service users, volunteers, partnership agencies as well as local dignitaries including Rugby MP John Slinger and the Mayor of Rugby, Coun Barbara Brown."

CGL has recently been recommissioned by Warwickshire County Council (WCC) to continue to provide the Adult Substance Misuse Service in the county from its hubs in Rugby, Leamington, Stratford and Nuneaton.

**DRIVES4U** **Tel: 0800 3032559**  
**Mob: 07773 911552**  
**www.drives4u.co.uk**

**Are you looking to improve or enlarge your driveway or patio?**

We can provide you with a beautiful new patio or driveway in Coventry, Bromsgrove, Redditch, Solihull, Leamington, Kidderminster and Birmingham

**5 Year guarantee**

- We've designed and built just about every shape and size of driveway and patio you can imagine, so we will not be phased by your project.
- We strive to achieve 100% satisfaction and unlike other driveway companies, with us you pay absolutely nothing upfront.
- Give us a call and you could save upto £1000

**Tel: 0800 3032559 | Mob: 07773 911552 | www.drives4u.co.uk**



# Teaming up to spread the message

by **Andy Morris**  
andy.morris@bullivantmedia.com

'LUCKY to be alive' - a Rugby mum who survived skin cancer after her husband noticed changes to a mole on her neck has teamed up with her teenage daughter to help launch a sun safety campaign.

Teaching assistant Kim Teasdale, 44, was diagnosed with a malignant melanoma in 2017 and needed life-saving surgery to prevent it spreading.

The experience was so scary that her 17-year-old daughter Hermione was inspired to create a sun safety presentation and video for her school.

Now the pair have teamed up with Cancer Research UK and Nivea Sun to encourage people to follow three simple steps this summer: seek shade, cover up and apply sunscreen regularly and generously.

Kim, a teaching assistant at Bilton CofE Junior School, said: "Finding out I had melanoma was the worst day of my life.

"Hearing the word cancer was devastating - I actually don't have the words to explain how I felt, all I know is that millions of thoughts and feelings came rushing to me all at once. After the initial shock and rollercoaster of emotions I got in the mindset of 'damn you cancer, I will beat you!'

"I do feel strongly that there needs



**Hermione and Kim are encouraging people to seek shade, cover up and apply sunscreen this summer.**

to be more awareness that melanoma is actually cancer growing in the largest organ of your body. Awareness was very limited when I was growing up.

"Now, I make sure I'm covered up and take some time out of the sun in the middle of the day, as well as always being prepared with hat, sunglasses and sunscreen. It's natural to want to make the most of warmer days, but sun safety doesn't mean missing out, just being careful."

Kim says she's lucky to be alive and thanks her husband for encouraging her to talk to a GP.

She said: "I never thought anything of it until it started to change shape and colour. Then my husband noticed it weeping and insisted I get it checked out.

"I was told it was an aggressive form of cancer, so I was lucky to catch it as early as I did. If I hadn't gone to the doctors at that point, I might not be here today."

Kim had a biopsy which showed she had stage 1 melanoma. Although it had been caught early, she was told the cancer was fast growing.

Kim had two further surgeries to remove the wider area around the cancer and lymph nodes to limit the chance of recurrence.

"If you were to look at me you wouldn't know I had cancer," added Kim. "To the outside world I didn't look like a cancer patient as I didn't have chemo or lose my hair.

"Nevertheless, it was cancer, and I still had to have treatment. A huge operation, recovery time, check-ups and the constant fear in the pit of my stomach that it would come back. So just because something isn't visible, doesn't mean it isn't there."

Hermione remembers her mum sleeping on the couch for two weeks after surgery due to the pain.

In an animated video created to raise awareness of skin cancer, Hermione said: "The day my mum was diagnosed with cancer was the day me and my family's world fell apart.

"After surgery, mum was in constant pain I remember how hard we all took it. She laid on the couch for two weeks before she could make it upstairs to bed."

Hermione, a student at Rugby Free Secondary School, now wants to do all she can to spread awareness.

"Please, if you notice anything peculiar on your skin, call your GP and get it checked out," she said. "Remember to seek shade, cover up and apply sunscreen. Finally, if you see something, say something."

Kim, who joined a national melanoma research study after her diagnosis, added: "Thanks to advances in research and treatment, I'm still here and looking forward to enjoying more precious moments with my loved ones this summer."

Visit [www.cruk.org/sunsafety](http://www.cruk.org/sunsafety) for more advice, or to donate to skin cancer research.

## THE JONES FAMILY JEWELLERS

WE BUY & SELL GOLD  
WATCH BATTERIES & STRAPS  
IN HOUSE JEWELLERY REPAIRS



TJFJEWELLERS.CO.UK

   @TJFJEWELLERS



SATCHWELL WALK, ROYAL LEAMINGTON SPA | SATCHWELL COURT, ROYAL PRIORS, ROYAL LEAMINGTON SPA | TALISMAN SQUARE, KENILWORTH  
CV32 4QE CV32 4QE CV8 1JB

01926 882552

01926 893393

01926 954271

**PUBLIC NOTICES**



For all your latest information on  
Planning Proposals, Traffic Notices,  
Goods Vehicle Operator Licences,  
Licences To Sell Alcohol and Probate Notices...

See page **30**

# Trust backing for town's first all-through school

'EXCITING' plans to reimagine the futures of two Rugby schools have been confirmed.

A proposal to enable Houlton School to become Rugby's first and only 'all-through' school – educating children from Reception through to Sixth Form – have been approved by the Transforming Lives Educational Trust (TLET) which runs the school.

Henry Hinde Infant and Junior Schools will also be joining together on one site.

The trust's CEO James Higham said: "The fact that we are announcing these two exciting pieces of news at the same time does make it feel like a milestone moment."

"It is right that we look at every opportunity to enhance what we do in our schools, and two things have come together that can really enhance what we are able to offer."

At Houlton, a purpose-built primary building will be developed next to the existing secondary school by Urban&Civic, the mas-

ter developers of the wider Houlton community.

Planning permission has been granted, meaning that building works can proceed – with the opening of the primary provision planned for September 2026.

Mr Higham said: "The prospect of an all-through school at Houlton is an exciting one."

"The children and young people will still have their own distinct areas to play, learn and socialise – but they will also be able to benefit from shared resources, facilities and opportunities."

"Primary aged children, for example, will be able to experience science labs and have access to specialist teachers for subjects like languages, and older children will have some amazing leadership and mentoring experiences. It is a win-win situation for everyone."

Staff and children at Henry Hinde Infant and Junior Schools – also part of TLET – will spend the next 12 months working on plans to move to one site at

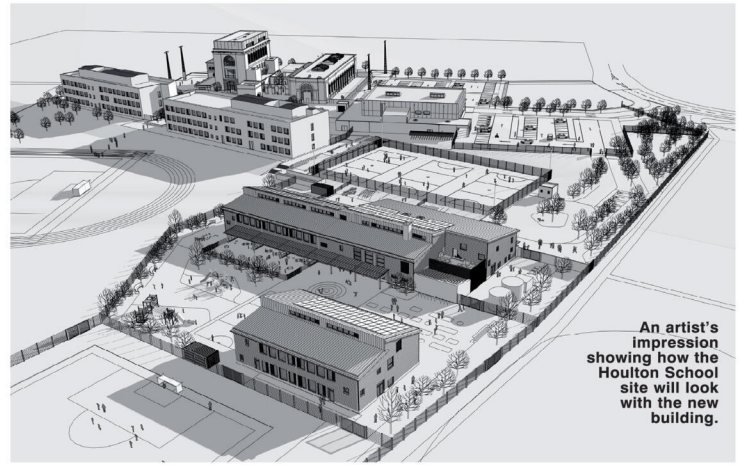
the start of the 2026 academic year.

Currently the two schools are 300 yards apart, and already share leaders, curriculums and approaches, and many parents have to go to both schools at the start and end of the school day.

Mr Higham added: "The site of the junior school has so much space for our children to play and learn, and there are lots of possibilities to develop the existing building to ensure that there is an amazing environment for slightly younger children."

"In fact, bringing the two schools together on one site feels like a natural conclusion to years of work – and the fact that there is a decreasing birthrate in the immediate community meant that now felt like a good time to take that next step."

"By joining together, we can focus more of our finances, resources and investment on what happens in the classroom – and less on the buildings and infrastructure."



An artist's impression showing how the Houlton School site will look with the new building.

# Council appeals for 'brownfield' sites to develop

**THE CALL has gone out for 'brownfield' sites in Rugby which could be used for future housing, and reduce the need to build on 'greenfield' sites.**

Rugby Borough Council has issued a second Call for Urban Sites, requesting any developers and interested parties to put forward sites in the town with potential for housing development.

The call follows a previous call for sites – held from November 2023 to February 2024 – and further work carried out by the council to identify urban sites for development before the Local Plan Preferred Options consultation held earlier this year.

A council spokesperson said: "In a changing property market, the call aims to ensure that the council has a 'belt and braces approach' with the most up-to-date information available to determine the capacity of the urban area to accommodate housing development, by reusing previously developed land and making better use of existing land and buildings."

Sites submitted to Troy Planning and Design – the organisation the council has commissioned to prepare an Urban Capacity Study on its behalf – will be assessed for



their potential to be redeveloped successfully within the emerging local plan period, alongside other sites that have previously been considered.

The council also hopes the company will be able to identify more developable brownfield sites which could offset the need for greenfield development.

Coun Louise Robinson, Rugby Borough Council's spokesperson for Growth, Investment, Digital and Communications, said: "The recent emerging local plan consultation highlighted that the scale of development needed over the next 20 years will require some housing outside of the urban area."

"However, we want to limit the amount of new housing in rural or village areas as much as we can, and that's why

we're taking this exceptional step of doing a second sweep of brownfield sites to do everything we can to identify and include potentially developable sites in Rugby town."

"This new Urban Capacity Study will give us robust and up-to-date evidence on the potential for housing on brownfield and previously used sites in the Rugby town area. Key within this is engagement with land and building owners."

"Landowners' or agents' circumstances may have changed since the last Call for Sites, so I would urge any landowner or agent with a potential site that could be developed for housing to submit the relevant details."

Visit [www.rugby.gov.uk/w/call-for-urban-sites](http://www.rugby.gov.uk/w/call-for-urban-sites) to suggest a potential urban development site before the deadline of Friday July 18.

BIRMINGHAM • DUDLEY • NEWCASTLE-UNDER-LYME • SHREWSBURY

## COUSINS

FURNITURE

Interest  
Free Credit  
Available

Summer  
Sale

NOW ON!

### Extra Discounts Off All Sale Prices

### NOW IN THEIR FINAL WEEK

Deferred Interest-Free Credit - available on all orders over £500. Credit is subject to status. All balances must be paid in full by the date specified at the time of purchase. Written details on request. Offer not available on clearance items, or in-store concessions. This offer is subject to availability and may change without notice.

# Third stage puts young artists in Godiva spotlight

by Andy Morris  
andy.morris@bullivanmedia.com

A **THIRD** stage has been announced for this weekend's Godiva Festival, giving young local musicians the chance to perform in their home city.

The Cov ConneX Kingston Stage – first introduced at last year's festival – will return for this year's event, which gets under way at 6pm today (Friday July 4).

The stage will celebrate local talent and Coventry's twin city of Kingston in Jamaica, with around 40 city-based artists taking to the stage over the Saturday and Sunday in styles ranging from rap, grime, afrobeat and reggae to DJs and MCs.

Coun Abdul Salam Khan, Deputy Leader of Coventry City Council and Cabinet Member for Events, said: "Godiva was already going to be an amazing festival, but the announcement of a third stage dedicated to young local musicians has added some-



The Godiva Festival begins this evening (Friday July 4).

thing extra special and I know it will be a big attraction for all music lovers.

"Thank you to Arts Council England for helping us to give artists from Coventry the incredible chance of performing on stage at a top festival in their home city – and to celebrate the incredible musical culture of our twin city of Kingston.

"With prices frozen from last year, the Godiva Festival is a great value-for-money event for everyone in Coventry, and I can't wait to enjoy the atmosphere when it all starts."

Coun Naeem Akhtar,

Cabinet Member for Housing and Communities, added: "Coventry is a great musical city that has produced some famous names, and what better place than Godiva to give our stars of the future a helping hand as they start their careers in the creative sector.

"We are delighted to welcome back the Cov ConneX Kingston Stage and to be working with city organisations such as Fyah Camp, ODE and Positive Youth Foundation to give performance opportunities to some of our talented young people. It's going to be another memorable weekend for the city."

This year's Main Stage line-up includes Marc Almond, Clean Bandit, Ocean Colour Scene, Neville Staple, Heaven 17, Heather Small, DJ Nathan Dawe and dance group Diversity.

The Cov Stage will host local talent and other acts, and the Family Field will be filled with live entertainment and interactive activities.

Visit [www.godivafestival.com](http://www.godivafestival.com) for more information.



Raj Bansal and Joanne Glover are encouraging residents to back Coventry's independent businesses on Independents' Day.

## Firms set for Independents' Day

INDEPENDENTS' Day takes place in Coventry city centre today (Friday July 4).

Coventry Business Improvement District (BID) is taking part in the UK-wide initiative to encourage support for independent businesses, of which there are around 200 in the city centre.

Visitors to the city centre will be able to identify independent businesses with artwork placed in windows across a range of sectors including retail, hospitality and professional services.

Coventry city centre's social media pages are also being taken over with

content all about independent businesses and their contributions to the city's economy.

Raj Bansal is director of Bansal Estates, an independent family business specialising in residential sales, letting, and commercial property in Coventry since 1985.

Raj said: "We've always been committed and proud to be an independent business, offering more flexibility to our clients."

Tammy Johnson, the manager of independent travel agents Millington Travel, added: "It is very important to support local independent companies as we are the heart of

Coventry city centre and we need to keep the high street alive."

Joanne Glover, chief executive of Coventry BID, said: "Independent businesses are a key part of the national economy and that is the case here in Coventry too.

"Unfortunately, they have been some of the hardest hit over the last year.

"They bring a vibrancy and diversity to the city, but they are also more susceptible to external economic pressures."

Visit [www.coventrycitycentre.co.uk](http://www.coventrycitycentre.co.uk) to find out more about Coventry's independent businesses.



*Bank Holiday Afternoon Tea*

Celebrate the Bank Holiday in true English style with a delectable afternoon tea served in our elegant spaces or picturesque gardens.

1.30pm – 4.00pm

Monday, 25th August | £39.50 per person

*Acoustic Afternoons with Barton Hollow*

Immerse yourself in the magic of live music as these talented musicians bring warmth and harmony to the afternoon...

2:45pm – 5:00pm

July – September (Selected Sundays)

*A Taste of the Season*

**AN EXCLUSIVE DINING EXPERIENCE**

An elegant evening of Champagne, canapés, and a four-course tasting menu by Executive Head Chef Stu Deeley, paired with fine wines, celebrating the best of late summer's produce.

Starting at 6.00pm

Thursday, 11th September | £159.00 per person



Harbury Lane, Leamington Spa, CV33 9QB | [INFO@MALLORY.CO.UK](mailto:INFO@MALLORY.CO.UK) | T: 01926 330214

# Death sparks a call for change

A CAMPAIGNING south Warwickshire couple are calling for a change in the law after their cat was killed by a dog.

Mike Burtenshaw and Carole Kirby told the Observer there has been a long-standing problem of uncontrollable dogs running off the lead at the car park of Bishop's Hill Nature Reserve near their home in Bishop's Itchington.

Dogs have often found their way into neighbouring gardens or onto the nearby children's play area after escaping their owners.

But matters took a distressing turn when the couple's cat Spanner was attacked by an off the lead gun dog. Their neighbour saved Spanner from the dog's jaws but the cat was severely mauled and died in Mike's arms on the way to the vet.

Mike explained there was a small sign in the car park of the Warwickshire Wildlife Trust reserve which instructed dog owners to keep dogs on a lead, but too often people were letting their dogs out of the car and they were getting away.

He said there had been no owner in sight when his cat was attacked and when they did manage to trace the owner they responded that "gun dogs were trained to do that".

Mike continued they wanted to take action to prevent further such attacks, but after speaking to police were surprised there was actually no law covering the killing of a cat by a dog.

Their research led them to Emilie's Law, a proposed UK law aimed at holding dog owners accountable for fatal dog-on-dog attacks. The bill is named after a Bichon



Frise called Emilie who was killed in a dog attack.

The current law does not criminalize such attacks unless a human is injured or at risk. They believe that cats should also be included.

They are now looking to start a petition to push for a change in the law change.

Mike added: "People do not seem to care if their dogs are off the lead and out of control, or even about the consequences of that, so something needs to be done to make them sit up and be more accountable."

A WWT spokesperson said they were taking further steps to promote responsible dog ownership in the area.

**Carole Kirby and Mike Burtenshaw are calling for a law change after the death of Spanner. Picture by Marcus Mingins 2325011MMR**

## Summer Gardening at the garden lovers' garden centre



[www.farnboroughgardencentre.co.uk](http://www.farnboroughgardencentre.co.uk)

A traditional garden centre that focuses on providing quality plants, garden products, homeware and gifts



AT FARNBOROUGH GARDEN CENTRE  
Come & visit our Treasured Teddies shop & see our massive selection of cuddly collectables & furry friends including especially loveable limited editions and everyday huggables

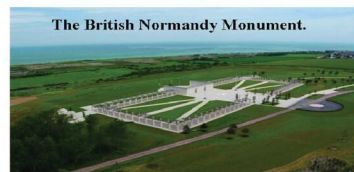
A world of Choice

OPEN 6 DAYS A WEEK  
Tues-Sat 9-5:30pm  
Sun 10:30-4:30pm  
Open Bank Holiday Mondays

On A423 Southam Road, Nr Farnborough Banbury, OX17 1EL  
Tel 01295 690479  
[customersales@farnboroughgardencentre.co.uk](mailto:customersales@farnboroughgardencentre.co.uk)



WHERE THINGS FOR YOUR GARDEN WON'T COST YOU THE EARTH



**The D Day Landings in Normandy**  
Ibis Styles Ouistreham  
5 Days / 4 Nights  
15th August—19th August 2025

Superb Value  
**£469.00**  
Per person  
Single Supplement  
£150



**Price Includes :-**

- All Coach Travel
- Day Excursions
- 4 Nights Accommodation
- Breakfast
- Entrances To Normandy Museums
- English & American Cemeteries
- 1 Evening Meal In Restaurant



Pegasus Bridge Museum



Normandy American Cemetery



The Merville Battery



Museum Debarquement



British Cemetery at Ranville

FOR MORE INFORMATION AND BOOKINGS CONTACT  
Jason Or Gemma On 024 76 350 811

## Highly creative creatures

THE ANIMAL kingdom in art can be seen at Rugby Art Gallery and Museum.

New exhibition Great and Small: Crafted Creatures invites children and families to explore animals and creatures, with more than 30 objects selected from the Crafts Council Collection.

The exhibition features creatures crafted from clay, wood, metal, glass and textiles, revealing the techniques and materials which bring craftmakers' imaginations to life.

It features works from craftmakers including Richard Slee, Kate Malone, Susanna Heron, Howard Raybould, Sam Smith and Katherine Morling.

The exhibition also includes interpretation panels co-written by six to 11-year-olds, a children's Haiku poetry section, and a height chart where youngsters can compare heights with different animals.

Rugby Borough Council spokeswoman Coun Maggie O'Rourke said: "Great and Small: Crafted Creatures has been specifically designed with children and families in mind, with interactive elements encouraging visitors to explore and engage with the exhibition, so it's a perfect destination for a school summer holiday outing."

Great and Small: Crafted Creatures runs until September 6.



Jim Edmiston's Zebra, Anteater and Tiger feature in the Great and Small: Crafted Creatures exhibition at Rugby Art Gallery and Museum. Picture by Crafts Council Collection / Todd-White Art Photography.



## Helping young into films brings reward

A INSPIRING filmmaker from Rugby is being thrust into the limelight.

Film education charity, Into Film, has named Dale Forder as one of three recipients of its 'Filmmaking Champion' award, which celebrates those who help young people find an outlet through filmmaking.

Dale will walk the red carpet at a glitzy ceremony which has previously been attended by some of the biggest stars in the industry - the likes of Daniel Craig, Charles Dance, Eddie Redmayne, Lily James, Ruth Wilson, Bill Nighy, Simon Pegg and Martin Freeman.

Dale has been supporting young people's filmmaking since 2021 when he started using it to engage with youth theatre groups who could no longer col-

laborate in large in-person groups during Covid.

He now runs an extra-curricular film club at St Luke's CE Primary School in Northampton, which encourages the older pupils to mentor the younger ones.

He gives the young people as much creative freedom as possible and only creates films that tackle topical issues for the club.

Previous films include 'You Are Enough', a film about exam stress and secondary school anxiety and 'Dyslexia & Me', a documentary/drama exploring children's understanding of Dyslexia. The latter won Best Film in the 11 and under category at last year's Into Film Awards.

And their current project is titled 'Navigating the Net', a film about internet and computer safety.

Dale said: "I'm thrilled to win this award! It's a pleasure and an honour to be recognised for the work I do with young people, helping them create films, tackle topics that are relevant to them, gain confidence and learn storytelling, co-operation, problem solving and other skills."

"Supporting young people's filmmaking is important to me as it's a medium that can shape their educational and creative lives from a young age."

The Awards, sponsored by the UK film industry, also celebrates young people's creativity in film, showcasing and highlighting tomorrow's creative talent.

Dale Forder has won a prestigious national film award in recognition of his work with young people.



# INTERNATIONAL METALS & CABLE RECYCLING LTD

We purchase all Ferrous and Non Ferrous Metal Batteries and Cables

Collection Service Available

Long Marston Road, Long Marston,  
Stratford Upon Avon, Warwickshire, CV37 8AQ

01789 721 288

david@imrltd.co.uk

Open Mon/Fri - 8am - 5pm

# New engineering hub set to bring city jobs

A NEW submarine engineering base is set to bring 150 jobs to Coventry.

BAE Systems has cut the ribbon on its new digital engineering hub, which will develop talent to support UK submarine building.

The site will recruit and train engineering expertise from the area to support active vessels and help deliver the Astute, Dreadnought and SSN-AUKUS-Class submarines.

The hub was opened by Steve Timms, Managing Director of BAE Systems Submarines, and Rear Admiral Paul Carroll, Director of Submarine Acquisition at the Submarine Delivery Agency (SDA).

Mr Timms said: "The opening of our new Coventry office marks the beginning of an exciting new chapter in BAE Systems' engineering journey and the work that will take place here, now and in the future will be important as we deliver next-generation submarines to the Royal Navy.

"The wealth of expertise, experience and talent in the Midlands will directly contribute to a truly national endeavour on work that the region can be proud of."



Engineers in Coventry will help develop the systems which sit at the heart of all Royal Navy nuclear submarines being built at the company's shipyard in Barrow-in-Furness, Cumbria.

Rear Admiral Carroll said: "Delivering the Dreadnought programme, whilst also increasing the capacity and capability of the UK's submarine industrial base, means that we need to continue investing in talent and expertise across the entire country."

"The Midlands hub is an example of this ambition and is making our national endeavour even further

reaching. As someone who grew up and completed their engineering training in this part of the country, I'm delighted to see this initiative come to life - melding naval and industrial expertise and innovation such that our sailors have the best possible support 24 hours-a-day."

The workforce is being recruited from a wide range of sectors including finance, automotive and sales, as well as defence veterans.

The new facility is based at Ansty Park business complex, neighbouring the advanced manufacturing and innovation organisation MTC.

Sir Rick Thompson,

Managing Director of Defence at MTC, said: "The Midlands is one of the country's top innovation regions and BAE Systems' new office in Coventry is testament to the area's strength in developing industrial technology and defence collaborations that attract investment and jobs.

"The colocation of BAE Systems and MTC's manufacturing experts offers huge benefits and strengthens our partnership as they expand their operations in the country, and we work together to further enhance the region's credentials as an R&D hub."

The UK Government's recent Strategic Defence Review reaffirmed the delivery of four Dreadnought Class boats, scheduled to enter into service in the early 2030s. In Barrow, the final two Astute Class boats are moving closer to completion.

**Steve Timms, Managing Director of BAE Systems Submarines, and Rear Admiral Paul Carroll, Director of Submarine Acquisition at the Submarine Delivery Agency (SDA), cut the ribbon at the new facility.**



Officers would like to speak to these men as they may have information which can help with enquiries into a robbery.

## Keen to trace

POLICE are appealing for information on the men pictured in connection with a robbery in Coventry.

Shortly before 1pm on May 26, two men entered a shop in Woodway Lane and stole money from the till.

A member of staff was assaulted and threatened with a weapon during the robbery.

Officers investigating the robbery have released an image of two men they would like to speak to as they may have information which can help with enquiries.

Anyone who saw anything at the time, or who recognises the two men pictured, is asked to call police on 101 quoting crime number 20/253234/25.



## Questions about care? We can help

We know moving into residential care is an emotional and difficult decision with lots to think about.

With over 30 years' experience, we can help you navigate the process of finding the right care home, so that you feel confident about the decision you make – whether that's choosing a WCS Care home, or one outside our group that's more suited to your needs.

If you've got questions about care, or one of our care homes, our Trusted Advisors can help.



Philip Rainsford



Drovers House, Rugby

07802 728447

p.rainsford@wcs-care.co.uk



Westlands, Rugby Dewar Close, Rugby

07802 728443

j.rugg@wcs-care.co.uk



Josephine Rugg

# Doctor gets on his bike for fundraiser

**A NOSTALGIC doctor is taking a trip down memory lane for The Myton Hospices.**

Richard Kitchen, a consultant in palliative medicine with a long-standing connection to the charity, is saddling up for a 184-Mile Hospice Cycle Challenge on July 11.

His route will take him to all the hospices he worked at during his training including Myton Hospices centres in Warwick and Coventry.

Rich is hoping to raise £2,500 through his bike ride, but for him, the challenge goes beyond fundraising. His primary goal is to shine a light on the funding crisis many hospices and palliative care teams are facing.

by Philippa Mingins

He said: "Of course, raising money is part of it, but my main aim is to raise awareness. Hospice funding just isn't where it needs to be. Many hospices are facing deficits and being forced to make difficult decisions, including cutting services – all while demand for palliative care is increasing due to an aging population and more complex conditions.

"Death is something you can't do twice – you don't get a second chance to get it right. We need to offer people the best quality of life at the end of their life, and that means having comprehensive, well-funded palliative care services.

More funding is needed to allow this."

During his training in 2011, Rich spent a year working at Coventry Myton Hospice, and later returned in 2015 to work at Warwick Myton Hospice.

After a period away from the area, he re-joined the team at Coventry Myton Hospice from 2018 to 2021.

Rich continued: "I loved working at Myton. The team was excellent, from the staff to the patients and carers. I really enjoyed my time there."

Myton's challenge events lead Marc Dwyer said they were "incredibly grateful" to Rich for taking on such a physical challenge and for also using it as a platform to shine



a light on the importance of hospice care and the serious funding challenges hospices across the country were facing.

He added: "We are a charity, not the NHS; just 17 per cent of our funding comes from the NHS. This year, we need to raise £12.7 million

of the £15.3 million it costs to continue providing our services free of charge to our patients and their loved ones."

Visit [www.givewheel.com/fundraising/7572/multi-hospice-195-mile-cycle-ride-to-support-palli/](http://www.givewheel.com/fundraising/7572/multi-hospice-195-mile-cycle-ride-to-support-palli/) to donate.



This year's Make A Will Week raised the most in the campaign's history.

## Make a Will Week raises record £25,000 for Myton

IT HAS been a record-breaking year for The Myton Hospices' Make a Will Week.

It collected £24,469 – the most raised in the campaign's history.

This was made possible through 129 will-writing appointments, donations and Gift Aid contributions.

Eleven people have also pledged to leave a gift in their will to Myton, which has hospices in Warwick, Coventry and Rugby.

Hospice spokesperson Danni Mooney said: "We are deeply grateful to everyone who participated in Make a Will Week and to the local solicitors who generously gave their time to support this campaign. The funds raised will make a significant impact in enabling us to continue providing free care to those living with life-limiting illnesses and their families across Coventry and Warwickshire."

\* FUNDRAISERS are being

called to hit the fairway for The Myton Hospices.

The charity's annual Golf Day tees off at Welcombe Golf Course in Stratford on Friday September 19.

There will be 18 holes of golf and refreshments and a prize of £400 for the winning team of four.

Visit [www.mytonhospice.org/Golf](http://www.mytonhospice.org/Golf) for more details and to sign up.

\* THE MYTON Hospices' new

Summer Jackpot Raffle has won Campaign of the Year at The Lotteries Council Awards.

Launched to help raise an additional £250,000 to fund their vital services, the raffle gives players the chance to win £25,000 – all while supporting their patients living with life-limiting illnesses, and their families across Coventry and Warwickshire.

Visit [www.mytonhospice.org/jackpot](http://www.mytonhospice.org/jackpot) for more details.



Wilkes

Here for Life's  
*Harder* Moments.

Practical and Compassionate Legal Support

When Relationships Break Down

Need *family* law advice?  
Speak to our experts today.

0121 733 8000  
[wilkes.co.uk](http://wilkes.co.uk)

Your legal partner  
for all things in *life*.





# It's better to belong

Saving with us isn't just good for you, it's good for others too.



**Leeds Building Society**

Leeds Building Society is authorised by the Prudential Regulation Authority and regulated by the Financial Conduct Authority (FCA) and the Prudential Regulation Authority. Leeds Building Society is registered on the Financial Services Register under number 164992 (you can check this on the FCA website <https://register.fca.org.uk/s/>) Head office: 26 Sovereign Street, Leeds, West Yorkshire, LS1 4BJ.



LEFT: Lauren Henry's mum and auntie receiving her Freedom of the District honorary scroll from Coun Peter Elliott, Chairman of Harborough District Council. Picture by Andrew Carpenter @ Carps23

RIGHT: Lauren brought a gold medal back from the Paris Olympics last year.



# Golden girl honoured by award

**AN OLYMPIC hero from Lutterworth has been granted the Freedom of Harborough District for achieving the gold standard.**

by **Andy Morris**  
andy.morris@bullivantmedia.com

Lauren Henry received the honour for winning a gold medal for Team GB in the women's quadruple sculls rowing event at the Paris 2024 Olympic Games.

She has since won gold for Great Britain in the women's single sculls at the European Rowing Championships.

Her mum Nicola Henry and auntie Mandy Jesson accepted the honorary scroll on Lauren's behalf at Harborough District Council's

annual meeting. The Freedom of the District is the highest honour the council can bestow and is given to individuals who have demonstrated outstanding achievement and have a strong association with the district.

Lauren, 23, said: "I just want to say a massive thank you. It is both an honour and privilege to receive the Freedom of the District and I am truly humbled."

"I would like to say thank you to my family, especially my parents, for being so unbelievably supportive and allowing me to pursue my

dreams. They didn't know that I would end up winning an Olympic gold when I started rowing, but nonetheless they supported me wholeheartedly to do what I loved.

"I would also like to thank my coaches for their encouragement, enthusiasm and support through all the hard training, the good and the bad.

"I feel very proud that I get to represent the area and that I am still able to race for Leicester Rowing Club where possible.

"I am very excited to be taking on a new chapter in my rowing career and racing in the single scull. It has been a dream of mine for many years."

Council leader Coun Phil Knowles said it was very rare for the award to be made – evidence of the high esteem in which the council holds Lauren.

He added: "Lauren is a wonderful ambassador for Harborough district, much-loved and highly respected."

"She is a role model for everyone and we are so proud of everything Lauren has done and will continue to do."

Rugby-born rower Lauren starred in one of the most dramatic moments of the Paris games when her crew edged out the Netherlands in the final stroke of the race to win gold by just 0.15 seconds, putting

the former Rugby High School pupil on the top of the podium at her first Olympics.

Lauren took up rowing at the age of 13 at Leicester Rowing Club. At 22, she became the youngest rower on Team GB in Paris – and now she plans to conquer her chosen sport.

Following her Olympic triumph last year, Lauren told the Observer: "My goal is to be the most successful female rower ever from Great Britain."

"The real greats don't just stick with one gold, they get multiple, so that's my aim."

She was presented with Rugby's Freedom of the Borough certificate in March.

# HOLIDAY SPORTS CAMPS!

"Sports Camp of the Year 2024 - Central England"



**ALL SCHOOL HOLIDAYS**  
MONDAY TO FRIDAY

**SUPERSPORTS TEAM**

📍 King Henry VIII School, CV3 6AQ

🕒 8am - 5pm

👥 Ages 4-16 - children who LOVE sport!

📍 Improving skills & FUN with friends!

**FREE DAY**  
FOR ALL OBSERVER READERS



SCAN ME



Now add Swimming!



WWW.TEAMSUPERSPORTS.CO.UK/COVENTRY



**DISCOUNTS AVAILABLE**  
10% Early Bird  
10% Siblings  
20% Full-week

**Tax-Free Childcare & Childcare Vouchers Accepted** ✓

Call Us Today - 01675 488494

# THE BED FACTORY

**SPECIALISTS IN BEDS AND MATTRESSES FOR PEOPLE WITH BACK, SHOULDER OR HIP PAIN.**

# SALE NOW ON

### The Harrison Handmade Beds



Complete Range of Harrison FR **Chemical Free** Beds on Show

### Special Price Ottoman



Single £449 • Double £499  
King £599 • Super King £699

### Sutton Wooden Frame Hand Made Frame



Single £339 • Double £419  
King £469 • Super King £589

### 1 WEEK DELIVERY ON ELECTRIC BEDS



We are specialists in electric adjustable beds and have A Large Selection Available Starting From £999

**5 POINT MASSAGE MATTRESS NOW AVAILABLE TO TRY IN STORE.**

### Avon Fire Side Chair



£669.00

### Special Edition 2 Drawer Bed Set



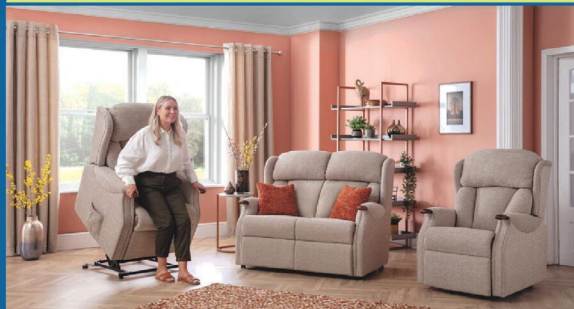
3'0 was £449 now £389  
4'6 Was £599 now £499  
5'0 was £699 now £599

### Bedroom Furniture



Full Range of Bedroom Furniture Available

## Celebrity studio in store



**Mammoth Ultimate Health Mattress**  
5'0 Pure Mattress or 2000 Limited Stocks  
Reduced from **£2139**  
TO JUST **£1599**

Helps reduce back, shoulder and hip pain

Mattresses	Support Chairs	Beds	Sofas
Riser Recliners	Electric Adjustable Beds	Corner Sofas	Headboards
Chests	Wardrobes	Pictures	Mattress Toppers
Lamps	Pillows	Duvets	Z Beds

## Leamington's Largest Independent Bed Retailer

**We can supply a large range of beds in 1 to 2 weeks - 3' Single Beds also available - WE SUPPLY WHEN OTHERS FAIL**

139 Regent Street, Royal Leamington Spa, CV32 4NX

01926 422404

sales@thebedfactory.co.uk  
and www.thebedfactory.co.uk



# Picture Feature



LEFT: Visitors were welcomed with a live music performance.



RIGHT: Warwickshire's Young Poet Laureate Ananditha Venkatraman performed a piece.



Families took part in arts and crafts activities.



Hello Sunshine illustrator Jo created fun, ten-minute live portraits of visitors.



## BATH OUT, SHOWER IN OFFER

# NOW ONLY £3,999



## Say Goodbye To Your Old Bath & Hello To A Brand New Walk-in Shower



- ✓ Removal of your existing bath
- ✓ Installation of a stylish walk-in shower
- ✓ Brand new shower supplied and installed
- ✓ Supply and installation of high-quality PVC wet wall

*Plus!*  
**NOW INCLUDING  
 FREE CEILING  
 CLADDING AND  
 2 x GRAB RAILS FOR  
 EXTRA SAFETY  
 Free!**

- ✓ Quick Turnaround
- ✓ Expert Installation
- ✓ Hassle-Free, Complete Transformation



**A Full, Professional Job - With No Hidden Extras**



**City Bathrooms**  
Kitchens & Bedrooms

158 Longford Road, Coventry, CV6 6DY (Off M6)

**Tel: 02476 365877**

**www.city-bathrooms.com**

Mon-Sat: 9am-5pm. Sun: 10am-4pm

**Ready To Upgrade Your Bathroom?**  
 Call us today or visit our showroom to find out more.  
**CITY BATHROOMS & KITCHENS**  
 Great Product, Great Service, First Class Installation  
**All At A Price You Can Afford!**

# Picture Feature

# Parade and events help mark a major landmark for the gallery

A 'BIG Birthday Bash' has marked the 25th anniversary of Rugby Art Gallery and Museum

It began with a 'creative creatures' children's parade through the town centre, featuring children and families from schools and community organisations who had worked with artist Kate Morris to create costumes for the parade.

At the Little Elborow Street venue, Ascension Dance delivered pop-up parkour workshops for youngsters, the Irregular Art Hub hosted a street art workshop, and Far Out Faces offered animal-themed face-painting inspired by the new Great and Small Crafted Creatures exhibition.

Science on Stilts toured the venue during the party, with professional scientists – and accomplished stilt walkers – entertaining with simple experiments and answering visitors' scientific questions.

Event illustrator Esther Sketches captured the creative spirit with live illustrations inspired by the venue and visitors.

Visitors were invited to enter the birthday spirit by creating a pom-pom party hat and helping to decorate a giant cardboard birthday cake, while Do Touch brought a sculptural world of squishy monster creatures for young children.

Rugby Borough Council's Play Rangers team brought Absolute Playhem to the Big Birthday Bash with a range of fun activities for children.

Artist Mark Curtis Hughes revealed the secrets of paper-cut art during a mask-making workshop, Director's Cut brought a photobooth so visitors could take home a free birthday snap, and Hello Sunshine illustrator Jo created fun, ten-minute live portraits.

During the celebrations, Mayor Barbara Brown unveiled the latest star attraction to The Rugby Collection of contemporary British art - Construct 2, an oil painting by acclaimed artist Barbara Walker.



Celebrations began with a 'creative creatures' children's parade through the town centre.

**OUR BIG SALE IS STILL ON**

**OPEN 7 DAYS CV6 5EY**

**INFLATION EVERYWHERE - BUT NOT AT CARPET MILL!**

Everything is going up in price, the same for Carpets and this is why it pays to go to Carpet Mill. Manufacturers of yarn and other materials for making carpets have all had price rises and some manufacturers are busy changing their specifications to many ranges to compensate. They also get surplus rolls that they cannot sell to the big stores as they don't have enough stock left to service them.

**Therefore, we are buying those rolls at a FAT DISCOUNT and passing it on to YOU.**

**BRAND NAME CARPETS AT LOW LOW PRICES**

*From quality Axminster to budget cord*  
 We are recommended for our low prices, quality service and extensive range throughout the Midlands. There are no R.R. prices on carpets, so if others give 50% offers or sales discounts, is it 50% off their normal high prices. ALWAYS compare with Carpet Mills normal prices!!!!!!!

# CARPET MILL

**CROMWELL STREET (OFF RED LANE) COVENTRY CV6 5EY TEL: (024) 7666 1985**  
 SOME CUSTOMERS TRAVEL MILES - YOU DON'T HAVE TO - WE ARE HERE

[www.salecarpet.uk](http://www.salecarpet.uk)



# Kenilworth Antique & Textile Valuation Day

## Thursday 10th July

10am to 2pm



# With TV's Notty Hornblower

Valuations of Textiles, Handbags, Vintage Clothing, Silver, Gold, Jewellery, Watches, Antiques, and Collectables

**Items may be left to be consigned into Auction**

**Refreshments in aid of WCS Care**



**St Francis of Assisi Church Hall,  
110 Warwick Road,  
Kenilworth, CV8 1HL**

**T: Hansons Warwickshire 07470 459309**

**E: [clivejones@hansonsauctioneers.co.uk](mailto:clivejones@hansonsauctioneers.co.uk)**

**[www.hansonsauctioneers.co.uk](http://www.hansonsauctioneers.co.uk)**



**Hansons Auctioneers, Etwall, Derbyshire, DE65 6LS**



Reg and David Clayton (front, second and third from left) and Professor Stuart Croft (back, centre) with University staff representatives and close friends of the Clayton family. Picture by Hollisphotography.co.uk

# Plaque recalls family's legacy at university

A PLAQUE commemorating a local family's legacy has been unveiled at the University of Warwick.

As part of its 60th-anniversary celebrations, the university has honoured the Clayton family, the original custodians of the land upon which the University now stands, with a permanent plaque at its campus in Tocil.

David and Reg Clayton, who grew up and worked on Tocil House Farm before it became part of the University in 1967, returned to campus to mark the occasion.

The plaque was unveiled beneath a historic tree which the Claytons planted decades ago and once stood in front of the original farmhouse, recognising their family's longstanding connection to the area.

The Clayton family moved to Tocil House Farm in the late 1950s, making their home in a 16-room farmhouse. Parents William and Minnie Clayton raised their four children there - Peter, Marion, David, and Reg.

David and Reg still live locally in Meriden and have regularly returned to campus over the years, witnessing its transformation first-hand. Their dedication to agriculture and the land left a lasting mark on the area's history.

David said: "It means a lot to be remembered. This land was our home, and it's nice to know it's still looked after. We are especially pleased to see the tree that we planted all those years ago is still thriving and is enjoyed by the University staff and students."

David began his agricultural career at sixteen and dedicated 49 years to farming, earning recognition from HRH Princess Anne at the Royal Show in 2005 for his long service. Reg, alongside his brother, contributed significantly to the local farming community.

Their late elder brother, Peter Clayton, was a prolific poet who penned over 1,300 poems inspired by the local countryside, reflecting the family's deep-rooted connection to the land.

Professor Stuart Croft, Vice-Chancellor and President of The

University of Warwick, said: "As we celebrate 60 years of academic excellence and innovation, it is essential to acknowledge the roots from which we've grown. The Clayton family's stewardship of this land laid the groundwork for the University's establishment.

"We are deeply grateful for their legacy, which we have honoured and will continue to uphold

for generations to come through our commitment to transformative education and research that makes a difference in the world."

The commemoration forms part of a series of events marking the University's 60th anniversary, which continue throughout the year. Visit [www.warwick.ac.uk/about/60](http://www.warwick.ac.uk/about/60) for more information.



## SPECIALISTS IN ALL ASPECTS OF ROOFING

New Roofs - Roof Repairs - Flat Roofing  
Fascia, Soffits & Guttering - Cladding  
Moss Removal

Chimney / Ridge Tile Repointing

Local References Available - Free Quotations

**For a FREE Quote, contact the local company you can trust**

**Solihull: 0121 392 3102**

Radcliffe House, Blenheim Court, Warwick Road, Solihull, B91 2AA

[www.solihullcladdingandroofingltd.co.uk](http://www.solihullcladdingandroofingltd.co.uk)  
[sales@solihullcladdingandroofingltd.co.uk](mailto:sales@solihullcladdingandroofingltd.co.uk)

You are invited to a series of

## Bible Talks at the Christadelphian Hall

Grosvenor Road CV1 3FZ near to the Central Six Retail Park  
& free parking available on site



Saturday July 12th  
at 11am

**"Why Does God Allow Suffering?"**



A brief synopsis of each talk is available on the website

[www.CoventryGrosvenorRdChristadelphians.com](http://www.CoventryGrosvenorRdChristadelphians.com)

# Appeal to give more Ukraine families a home

**A WELCOMING Warwickshire couple have opened their home to four Ukrainian families – and are encouraging others to do the same.**

Over the past three years, more than 1,000 Ukrainian nationals have begun a new chapter in Warwickshire, thanks to the generosity of residents who have provided them with a home.

John and Dora Stoddard, from Leamington, have hosted four Ukrainian families through the Homes for Ukraine Sponsorship Scheme.

John, whose own family has roots in Ukraine, said: "Dora and I have really enjoyed providing a home to all these people and helping them settle into life in our town, safe from the war in their country."

"The first family we hosted were a married couple with three daughters who have since found their own home. The second family were a couple with a one-year-old

by Philippa Mingins

boy who lived with us for three months before relocating to Spain.

"The third family was a mother and her 10-year-old son – her husband had to remain in Ukraine. They stayed with us for 11 months before moving into a council flat.

"Our current guests are Oleksandr and Faina, and their daughters, Angelina, ten, and Evelina, four, who arrived in March.

"Each family brought their own story and resilience, and it's been a privilege to support them. We would highly recommend hosting Ukrainians to anyone in Warwickshire – whether you have space for a whole family or just one adult."

John and Dora have also witnessed the growth of a thriving Ukrainian community across Warwickshire, with regular social activities taking place in Leamington, Rugby and Stratford.

They say this growing network fosters a strong sense

of inclusion and mutual support.

John Coleman, Warwickshire County Council's director for children and families, added: "We are incredibly grateful to residents like John and Dora who have welcomed Ukrainian families into their homes with such compassion and generosity."

"Their commitment reflects the spirit of our community. As the conflict continues, we are calling on more Warwickshire residents to come forward and offer the safety and stability that so many still urgently need."

The Homes for Ukraine Sponsorship Scheme supports both newly-arrived Ukrainians and those already in the UK. All hosts receive a monthly £350 'thank you' payment and may request a reasonable contribution towards household bills (but not rent).

Call 0800 408 1447 or email [ukraine@warwickshire.gov.uk](mailto:ukraine@warwickshire.gov.uk) for more details.



Superpower art – Dominika Stockham from Warwickshire County Council (WCC) scans the QR code with Junaid Hussain from Equip, Nikki Bailey and Dave Jones, also from WCC. Picture by Marcus Mingins 2625003MMR © Bullivant Media

## Community has its own superpowers

**FORGET Spiderman or Superman, community has its own superpowers.**

Refugee Week in Warwickshire brought together people across the county in recognition of the power of connection, support and shared belonging.

From art exhibitions and storytelling projects to school activities and community meals, residents joined together

to show community was about people looking out for one another, no matter where they're from.

A highlight of the week was a Community as a Superpower celebration event at the Old Shire Hall in Warwick on World Refugee Day.

It was a chance to celebrate the work of volunteers who have welcomed refugees into their homes and show

solidarity with those who have sought sanctuary in Warwickshire.

There was the chance to try foods from many parts of the world, enjoy traditional Ukrainian music, or take in Playbox Theatre's storytelling session.

Artwork created for 'My superpower for a kinder community' art competition was also on display.



By Coach from Coventry, Leamington Spa

Reader Travel

CoventryObserver.co.uk



### LANCASHIRE & THE PENDE WITCH TRIALS

Departing Thu 14 Aug '25

The Pendle Witch Trials of the 17<sup>th</sup> century was one of the darkest chapters in English history. On this five-day getaway, we discover the key locations and atmospheric landscapes of Lancashire that provide the backdrop for this landmark event.

**SO MUCH INCLUDED...**

- ✓ Return coach travel from Coventry
- ✓ 4 nights at the Legacy Preston International Hotel, Preston (JG3+ rating) with dinner & breakfast
- ✓ Guided coach tour of Pendle Witch Country
- ✓ Lancaster Canal Cruise
- ✓ Excursions to Lancaster, Samesbury Hall, Bury Market & Oswaldtwistle Mills

▶ **SAVE £30 - Quote OSG**  
- Book by 18 Jul 2025

**5 Days by Coach only £399**

Single Supplement £100



### THE WORLD OF JAMES HERRIOT, YORK & HARROGATE

Departing Mon 25 Aug '25

Step inside 23 Kirkgate in Thirsk and into the 1940s residence of James Herriot, author of the beloved All Creatures Great and Small books. We also visit the cathedral city of Ripon and the elegant spa town of Harrogate as well as historic York.

**SO MUCH INCLUDED...**

- ✓ Return coach travel from Coventry
- ✓ 4 nights at the Corn Mill Lodge Hotel, near Leeds with dinner & breakfast
- ✓ Excursions to the World of James Herriot Museum, Thirsk, Ripon, York & Harrogate

Optional excursion to Skipton & Haworth (£12pp)

**5 Days by Coach only £439**

Single Supplement £100



### ROYAL MINT, BRECON MOUNTAIN RAIL & BRISTOL HARBOUR CRUISE

Departing Mon 8 Sep '25

We enjoy the Royal Mint Experience and go behind the scenes to follow the journey of a coin, from blank to bank, and travel through spectacular landscapes on one of the most popular railway routes in Wales. We also visit the Welsh capital of Cardiff.

**SO MUCH INCLUDED...**

- ✓ Return coach travel from Coventry, Leamington Spa
- ✓ 4 nights at the Holiday Inn, Newport (JG3 rating) with dinner & breakfast
- ✓ Heritage train journey on the Brecon Mountain Railway
- ✓ Scenic drive through the Brecon Beacons National Park
- ✓ Cruise around Bristol Harbour
- ✓ Excursions to the Royal Mint Experience & Cardiff

**5 Days by Coach only £539**

Single Supplement £125

For more information, or to book, please call

**03332 342 514** Quote **osg** [justgoholidays.com/OSG](http://justgoholidays.com/OSG)

033 numbers are free within inclusive minutes packages otherwise standard rates apply.

or visit us online at



These packages are subject to JustGo! Holidays terms & conditions. Coach bookings are protected by Bonded Coach Holidays & the Association of Bonded Travel Organisers Trust Ltd. Air holidays are ATOL protected No.30883. Prices are per person, based on two people sharing a room & no tourist on bookings made up to 7 days post-publication, after which prices may fluctuate. Calls to OSG numbers are free with inclusive minutes packages, else standard rates apply. Other res of date, hotel, airport or pick-up location may incur a supplement. Please see website or call for full details.



# SUPER STUNNING SUMMER SALE

IS NOW ON AT

# GODIVA CARPETS



**GODIVA**  
CARPETS & FLOORING

presenting

**The Finest Midland's Flooring Show**

Your Wishes Granted - Your Hopes Realised  
Your Dreams Can Come true

at **GODIVA CARPETS**

Where you can afford a new carpet without breaking the Bank

**LOW, LOW PRICES - GREAT, GREAT SERVICE**

Flooring options from Sumptuous Top Quality, to Cheap and Cheerful

**DISCOUNTED PRICES** to suit every pocket and every budget

**Buying quality and affordable Carpets couldn't be easier - and Don't Worry, the Team at Godiva Carpets will make it even easier for you, to find your perfect carpet or flooring options**

- **Top Quality Wilton Royal to Branded Room Sized Remnants to clear and ready to go (No reasonable offer refused)**
- **Landlord Deals from only £24**

Check out our website to see all the lovely comments from our very satisfied customers



**OUR NORMAL OPENING HOURS ARE 9AM TO 5.30PM MONDAY TO SATURDAY (CLOSED ON SUNDAYS)**

## 02476 551200

**GODIVA CARPETS LTD, ARGYLE HOUSE, COLLINGWOOD ROAD, EARLSDON, COVENTRY CV5 6HW**

VISIT OUR ONLINE STORE [WWW.GODIVACARPETS.CO.UK](http://WWW.GODIVACARPETS.CO.UK)



**Brintons**

**CAVALIER**  
FLOORING SYSTEMS

**Lano**  
Carpet Solutions

**Penthouse**  
Carpets

**ABINGDON**

**ulster**  
www.ulstercarpets.com

**STAINFREE**  
The original and the most popular easy-clean carpet

**WILTON ROYAL**

AND MANY MORE LEADING BRANDS

# GODIVA CARPETS

*A family business trading since 1953*



# THE BLINDING BEST: How one Coventry business is raising the bar (and the blinds!)

**In a world of quick fixes and throwaway trends, it's refreshing to find a company where craftsmanship, care and community still matter.**

Step into the world of Brixham Blinds, and you'll soon see it's not just about dressing windows – it's about transforming homes. Based in the heart of Coventry and proudly serving the West Midlands, Brixham Blinds is a shining example of what happens when passion meets precision. With a service as

seamless as their sleek roller blinds, owner Zak Mangeria has spent the past ten years building something truly special: a local business that combines top-tier products with good old-fashioned service. "At Brixham Blinds, we pride ourselves on being more than just a supplier," Zak says. "We provide a made-to-measure service, tailored exactly to each customer's needs, no matter the size, style or shape of their space." And it shows. With 100% five-star reviews and an ever-growing number of loyal customers, Zak and his team have become the go-to for

both homeowners and tradespeople across the region. Whether you're styling a single window or outfitting a whole development, Brixham Blinds offers free consultations, expert advice, and solutions for every question you can think of. From minimalist vertical blinds for a contemporary living room to dramatic Roman blinds that give your kitchen a five-star feel, there's truly something for everyone. Their extensive collection includes roller, venetian, pleated, woodweave, blackout blinds and classic shutters – each one carefully crafted using high-quality materials, and all compliant with the latest child safety regulations. And if you're in the trade? You're in good hands too. "We work closely with builders, interior designers, and property developers to deliver bespoke blinds at competitive trade prices," Zak explains. "Everything is made to measure, and everything is backed by our five-year guarantee." Speed, too, is part of the Brixham promise. "We know timing is everything," Zak smiles. "That's why we offer a seven-day fitting promise and aim to get your blinds measured within 48 hours of consultation." It's that kind of commitment that keeps the rave



reviews rolling in: "Absolutely delighted with all of my blinds. Professional, lovely to deal with and the quality is superb." "They look fantastic. Lovely staff and very quick turnaround. Highly recommended." "Excellent service from start to finish. My blinds were fitted within a week of ordering them." And let's not forget the fitting. Brixham Blinds offers a no-obligation measuring service, a seven-day fitting promise, and a generous five-year guarantee. That's not just service - it's peace of mind. As someone who's wrestled with wonky DIY blinds in the past (hello, lopsided Ikea disaster), I can't tell you what a relief it is to meet

someone who gets it right the first time. Zak and his team don't just fit blinds - they make your house feel like a happy and well functioning home. Whether you're chasing that dreamy, show-home look or just want a better night's sleep in total blackout bliss, Brixham Blinds is ready to help you reimagine your space – beautifully, affordably, and reliably. With Zak at the helm, it's clear this Coventry gem isn't just good... They're the blinding best. Ready to find your perfect fit? Browse their collection online or book a free, no-obligation quote. The blind of your dreams is just a consultation away.



**Call Zak and the Brixham Blinds team on 024 7666 6686**  
 Visit [www.brixham-blinds.co.uk](http://www.brixham-blinds.co.uk)  
 Serving Coventry and the West Midlands – trade and consumer welcome



**10 YEARS WARRANTY ON SHUTTER BLINDS**

Available in beautiful and stylish Hard Wood and Faux Wood

## BRIXHAM BLINDS Residential and Commercial

Brixham blinds are a well-established blinds company offering to trade and consumer. With a great range of quality bespoke and made to measure blinds by an established blind company you can trust.

Whether you're thinking of vertical blinds, roller blinds, venetian blinds or roman blinds, shutter blinds, all of our blinds come with child safety regulations and fittings to make sure your home is safe.

**WE WILL BEAT ANY LIKE-FOR-LIKE QUOTE**

Visit us at: 21 Brixham Drive, Coventry, CV2 3LA  
 Email: [info@brixham-blinds.co.uk](mailto:info@brixham-blinds.co.uk)

Contact us today for a **FREE** no-obligation quotation

**T: 02476 666686** [brixham-blinds.co.uk](http://brixham-blinds.co.uk)



# Natural selection

A SELECTION of limited edition stamps have been released by the Royal Mail to celebrate the ecological importance of the UK's native mushrooms.

Ten stamps have been issued, showcasing the diversity of mushroom species throughout the UK.

The Royal Mail worked on the project with well-known mycologist, Geoffrey Kibby, one of Britain's foremost experts on mushroom identification. He has written and illustrated numerous books and field guides on fungi species found across Europe and North America.

Mr Kibby said: "Fungi are finally getting the attention they deserve in literature, education and on TV, and now their amazing diversity and importance to our ecology is being celebrated in this excellent set of Royal Mail stamps."

"The species illustrated show the wide variety of fungi to be found in the British countryside, emphasising their importance as a vital part of the fascinating biodiversity to be found in our islands."

## An array of fungi

The mushrooms range from edible varieties, such as the Penny Bun, to the toxic Fly Agaric which has a distinctive white-spotted red cap.

They are also a variety of colours on offer within the fungi collection chosen, from the intense violet of the Amethyst Deceiver, a common species in autumn woodlands everywhere.

Many form simple cups, of which arguably the most beautiful is the Scarlet Elf Cup, while others are tough and bracket-shaped, such as the colourful Turkey Tails or the often large and striking Chicken of the Woods.

And there are common species found on oak logs - the Clustered Bonnet, known for its unusual but difficult-to-define smell which resembles paint, flour or cucumber.

The variety of fungi is extensive and their importance in the world's ecology cannot be underestimated. The mushroom species pictured

on the stamps in full are: Chicken of the Wood, Clustered Bonnet, Scarlet Waxcap, Morel, Scarlet Elf Cup, Penny Bun, Amethyst Deceiver, Collared Earthstar, Fly Agaric and Turkey Tail. These are only a handful of the 4,000 varieties of mushroom in the UK today.

## Essential role

David Gold, director of external affairs and policy for Royal Mail, said: "Few people will be familiar with the breadth, variety and beauty of the fungi that are of such biological importance to our natural environment."

"Mushrooms play an essential role in the delicate balance of life around us, yet largely go unnoticed."

"In these stamps their contribution to the natural environment is duly recognised."

Stamps went on general sale on July 3 and the collection costs £13.75 for each set of ten.

Visit: [royalmail.com/mushrooms](http://royalmail.com/mushrooms) or dial 03457 641 641 for more.



## Questions about care? We can help

We know moving into residential care is an emotional and difficult decision with lots to think about.

With over 30 years' experience, we can help you navigate the process of finding the right care home, so that you feel confident about the decision you make – whether that's choosing a WCS Care home, or one outside our group that's more suited to your needs.

If you've got questions about care, or one of our care homes, our Trusted Advisors can help.



Philip Rainsford



Woodside Care Village, Warwick  
Castle Brook, Kenilworth

☎ 07802 728447  
✉ [p.rainsford@wcs-care.co.uk](mailto:p.rainsford@wcs-care.co.uk)



Four Ways,  
Leamington Spa  
Sycamores,  
Leamington Spa

☎ 07802 728443  
✉ [j.rugg@wcs-care.co.uk](mailto:j.rugg@wcs-care.co.uk)



Josephine Rugg

## Clocking up the miles

RESIDENTS across Warwickshire notched up more than 4,000 miles in this year's Ride, Walk, Wheel Week.

The campaign, held at the end of March, aimed to encourage people across the county to travel actively more often.

People were asked to pledge to ride, walk or wheel at least one journey that they would otherwise usually have made by car.

By logging their trips using the Love to Ride app, participants earned entries into prize draws. The more transport trips they logged, the more entries into the prize draws they received.

By promoting active travel, Ride, Walk, Wheel Week aimed to take steps towards achieving long-term behaviour change to establish and embed new social norms around riding, walking, and wheeling, increase the perceived desirability of active travel and make people more likely to continue with their active habits after the campaign.

Over the course of the week, 350 active travellers across the county made 931 trips - 267 of these walking - and logged 4,026 miles with the Love to Ride mobile app.

Stephen Rumble, Warwickshire County Council's transport spokesperson, said: "It was fantastic to see so many residents downloading the Love to Ride App and making their pledges for the week.

"We hope that our considerable ongoing investments in active travel infrastructure across Warwickshire will create opportunities for more of our residents to reap the environmental and health benefits of this form of travel all year round."

# Innovative work helps win road safety award

ROAD safety chiefs in Warwickshire are the best.

Warwickshire Road Safety Partnership has been named Road Safety Partnership of the Year by TyreSafe, the UK's charity dedicated to promoting tyre safety, in recognition of its efforts to improve vehicle safety and tackle the causes of preventable road collisions.

Warwickshire was praised for its collaborative and innovative work, including increased community engagement, targeted vehicle checks and a pioneering campaign to support young drivers and riders.

Judges in particular praised the partnership for its 'garage anxiety' initiative which tackles young drivers' reluctance to maintain their vehicles through after-hours garage evenings.

WRSP chair Philip Seccombe said: "This is a fantastic honour and testament to the dedication of all the partners working together through Warwickshire Road Safety Partnership. Whether it's running monthly vehicle checks, delivering practical education in schools or breaking down the barriers faced by young people, each activity has a direct impact on making our roads safer.

"I particularly want to thank those behind our young driver garage anxiety campaign, which has shown the real difference



WRSP chair Philip Seccombe celebrates the TyreSafe award with Carl Jay, owner of Just Nice Clean Cars based in Warwick, which was one of the garages to take part in the 'garage anxiety' initiative.

we can make when we listen to concerns and act on them. Every safer vehicle on the road brings us a step closer to our goal of halving the number of people killed or seriously injured on Warwickshire's roads by 2030."

Among the partnership's recent achievements:

- Warwickshire Fire and Rescue Service, working with Warwickshire County Council's road safety education team, has delivered monthly vehicle safety checks across the coun-

ty, supporting initiatives such as the car seat event weeks.

- A county-wide communications push on tyre safety has reached thousands of residents through social media, school programmes, and interactive online sessions aimed at young drivers and riders.

- A first-of-its-kind campaign tackling 'garage anxiety' was launched following a survey of 15-24 year olds. The results showed that 50 per cent of respondents had delayed or

avoided a service over concerns about cost or being taken advantage of.

- With the backing of Protyre Autocare, Just Nice Clean Cars and Whitmoore Auto Centre, four garage open evenings were held as part of the National Police Chiefs' Council's Young Drivers Campaign, allowing young motorists to meet mechanics, gain confidence, and learn simple vehicle checks. Plans are already in place to repeat the campaign in July.

## BOOK YOUR MOBILITY SCOOTER SERVICE WITH FREE BATTERY CHECK NOW - CALL FOR DETAILS

<div style="text-align: center; font-weight: bold; color: red;">★ STAR DEAL ★</div> <p style="font-weight: bold; color: blue;">COMPACT SCOOTER</p> <ul style="list-style-type: none"> <li>• Easy To Transport</li> <li>• Breaks into 4 Parts</li> <li>• 4 MPH</li> <li>• Free Insurance*</li> </ul> <div style="display: flex; justify-content: space-between; align-items: center; font-weight: bold;"> <span>BRAND NEW WAS £999.99</span> <span style="background-color: #003366; color: white; padding: 2px 5px;">SAVE £300</span> </div> <p style="font-weight: bold; color: red;">£699.99</p>	<div style="text-align: center; font-weight: bold; color: red;">★ STAR DEAL ★</div> <p style="font-weight: bold; color: blue;">RISER RECLINER CHAIR</p> <p style="font-size: small;">Relax in total comfort, helps to stand you up from sitting and raises your legs to help with circulation</p> <div style="display: flex; justify-content: space-between; align-items: center; font-weight: bold;"> <span>BRAND NEW WAS £799.99</span> <span style="background-color: #003366; color: white; padding: 2px 5px;">SAVE £300</span> </div> <p style="font-weight: bold; color: red;">£499.99</p>	<div style="text-align: center; font-weight: bold; color: red;">STAIR LIFTS</div> <p style="text-align: center;">Give your life a lift Enjoy your home</p> <ul style="list-style-type: none"> <li>• Safe and reliable</li> <li>• Easy to use</li> <li>• Remote control</li> <li>• Swivel Seat</li> <li>• Safety sensors</li> </ul> <p style="text-align: center; font-weight: bold; color: red;">FULLY FITTED From £1,699</p> <p style="text-align: center; font-weight: bold; color: red;">CALL FOR A FREE QUOTE</p>	<div style="text-align: center; font-weight: bold; color: red;">NEW MOBILITY SCOOTER</div> <p style="text-align: right; font-weight: bold; color: red;">FROM £15 PER WEEK</p> <p style="text-align: right; font-size: small;">Do You Receive The Higher Rate Mobility Allowance?</p> <p style="font-size: small;">If so you can use part of this allowance to get A New Scooter or Powered Wheel Chair From as Little as £15 a week</p> <p style="text-align: center; font-weight: bold; color: red;">CALL FOR A FREE QUOTE</p>
--	--	---	---

Wheelchairs from £129.99 • Motorised Bath Lifts from £279.99 • Commodes from £59.99 • 3 Wheel Walkers from £69.99

CALL TO BOOK YOUR SCOOTER SERVICE

02476 630444

Max Mobility Ltd, 7 Sherbourne Arcade, Coventry, CV1 1DN (opposite Home Bargains)

www.maxmobilityltd.co.uk

Pictures for illustration • Prices with VAT Exemption

## Building work on police HQ complete

A YEAR-long project to repair Warwickshire Police's historic headquarters in Leek Wootton is now complete.

The works on Woodcote House saw scaffolding erected around the entire building, over 450 stones replaced, repairs undertaken to the roof, skylights and windows and a partial rebuild of the prominent chimneys.

The main part of Woodcote House was built in 1861 and extended eight years later. The house was designed by John Gibson in the Elizabethan style for Henry Christopher Wise and built using locally quarried stone.

During the Second World War the grade II listed building, which sits in a 61-acre estate, was used as a convalescent home for injured US servicemen, before it became Warwickshire Police's HQ in 1949.

A police spokesperson thanked all those involved in the project to repair the building, adding it would "continue to stand for hundreds more years" thanks to the conservation work.

# Review 'will not deal with funding issues' says PCC

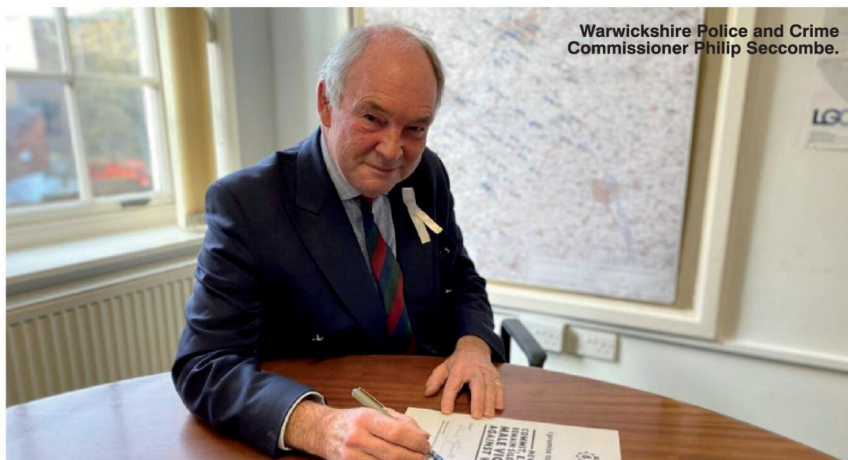
A MISSED opportunity for policing is how Warwickshire's police chief has described the government's spending review.

Warwickshire Police and Crime Commissioner Philip Seccombe also warns it will inevitably leave local taxpayers responsible for meeting the majority of the county's police funding.

He described the announcement by chancellor Rachel Reeves of an average 2.3 per cent increase in police funding as "misleading", given that it included funding increases already announced in the first two years of Parliament. He added the true figure over the remainder of Parliament was 1.7 per cent on average, but the reality was local forces would receive even less central funding.

Mr Seccombe said: "The chancellor gave the impression that government funding for policing is to increase year-on-year in real terms. This is misleading as the actual amount that we will receive in Warwickshire will be considerably less. This is because the figures announced yesterday included estimated funding from the police portion of council tax, known as the police precept.

"This presumably has been calculated by the treasury at the highest rate to deliver a more positive headline. Add in the fact



Warwickshire Police and Crime Commissioner Philip Seccombe.

that central funding is also top-sliced to pay for counter-terrorism policing and you can quickly see the amount individual forces will receive is much less generous.

"What is supposedly central funding will in large part be raised locally, which makes a nonsense of the chancellor's subsequent claims that council tax will not increase. At best, what funding there is may only cover annual inflationary pay

increases for officers and staff. At worst, it will leave a widening funding shortfall which will hamper forces in equipping the front line to service the rising demand for policing.

"With the police precept already contributing almost half of the revenue funding for Warwickshire Police, the chancellor's announcement will only result in that burden shifting ever more towards local

taxpayers. All police and crime commissioners will be effectively required to increase the police precept by the maximum amount to achieve what in return may not even be a standstill position.

"While any increase in government funding is clearly better than none, this CSR represents a missed opportunity and will not fundamentally change what is a challenging picture for policing."



## Thinking about retirement?

Get your finances in order with award-winning independent financial advice in Leamington Spa.

Book a free retirement planning consultation with one of our experts today!

0800 6342 111

office@simpsonfs.co.uk

www.simpsonfs.co.uk

Find out more



Follow us    

# Gardening

## Now is the time to get out and enjoy the garden in summer

JULY is the month for you to get out and enjoy your garden, whether it is an open area in the country or a more compact urban space.

The lazy, hazy days of summer are best spent enjoying the plants that you have lovingly nurtured and cared for over the past months that are now in full flower.

You do need to keep an eye on watering this month to make sure your garden does not suffer from dehydration, but make sure you are 'water-wise'.

You can conserve water and help plants in the summer by moving pots out of full sun into the shade where possible.

Some tips for good watering include using water-retaining gel in containers, water the area directly above the roots of plants, use grey water from washing up and a good watering less frequently is better than watering little and often.

Another way to conserve water and moisture is to ensure there is good ground cover planting in beds and borders – it acts like a mulch helping to suppress weeds and lock in soil moisture and nutrients.

Hardy geraniums, campanula and creeping herbs such as thyme are easy growing ground cover plants,

as are strawberries.

Using strawberries offers a variety of benefits to both plants and gardeners. In addition to providing delicious fruit, their shallow root system helps prevent soil compaction and also improves soil structure whilst their white and pink flowers attract beneficial pollinators.

Strawberries like well-draining and fertile soil and thrive in full sun but can also do well in partial shade. They require consistent moisture, especially during flowering and fruiting so need to be watered regularly.

There are several different types of strawberry plants – early, mid and late summer varieties, perpetual strawberries and alpiners – with popular varieties including 'Cambridge Favourite' - best known and most reliable, producing medium-sized, orange-red berries with a good flavour, 'Finesse' – a perpetual with good resistance to disease that produces lots of tasty, heart-shaped fruits, and 'Alexandria' - a vigorous heavy cropping alpine.

Some ground cover plants can also be grown as an alternative to a lawn – such as Chamomile, which also makes an excellent herbal tea.

It belongs to the Asteraceae



Using strawberries offers a variety of benefits to both plants and gardeners.

(daisy or sunflower) plant family and has been used as a traditional medicine for thousands of years to calm anxiety and settle stomachs. People in ancient Rome, Greece

and Egypt used dried chamomile flowers and their essential oils as a medicinal herb. There is some evidence that Chamomile can ease anxiety and

maybe even help you sleep better.

### Top tips

Other top tips from the RHS for July jobs in the garden include deadheading, feeding and watering for a long-lasting show of flowers, clearing algae, blanket weed and debris from ponds and keep them topped up in hot spells.

Do not worry if the lawn goes brown, it will bounce back once it rains but do water tubs and new plants if dry - although make sure to be water-wise.

Care for houseplants while on holiday, check for pests – especially aphids, pick courgettes before they become marrows, start picking tomatoes as they ripen and continue to feed and water, plant out leeks and brassicas for a winter harvest and give regular liquid feed to fruit or veg growing in containers.

### And finally...

As Roald Dahl says: "If I had my way, I'd remove January from the calendar altogether and have an extra July instead."



## ASK THE EXPERT

Hand, wrist and elbow information evening

INCLUDES A FREE 1:1 CONSULTATION



Mr Shyamalan  
Consultant Hand Surgeon

### Event details

Wednesday 2<sup>nd</sup> July 2025

6pm - 8pm

West Warwickshire Sports Complex  
78 Grange Road, Solihull, B91 1DA

BOOK NOW



or give us a call  
07973 696 606

Website  
www.midlandhandclinic.com

## Is Hand Pain Holding You Back?

Whether it's the frustration of struggling with buttons, the difficulty of opening jars, or the sadness of not being able to plant bulbs in your garden, it can be truly upsetting when pain and discomfort affect your hands.

Many common hand conditions share similar symptoms, but understanding the signs can help you identify what might be going on. Can you spot the symptoms of these common hand conditions?

### Common Hand Conditions and Their Symptoms

#### Carpal Tunnel Syndrome

Carpal tunnel occurs when a nerve in your wrist is put under pressure. You might be at higher risk if you have diabetes, are pregnant, or if your job or hobbies involve repetitive hand movements.

#### Symptoms to look out for:

Pins and needles in the fingers, especially the thumb, index, middle, and half of the ring finger.

Numbness in the hand.

Muscle wasting in the thumb area (in more severe cases).

Waking from sleep due to hand discomfort or numbness.

#### Dupuytren's Disease

Dupuytren's disease involves a thickening of the tissue in the palm, fingers, or thumbs, often causing fingers to bend inwards towards the palm. Risk factors include smoking, heavy alcohol consumption, manual work, diabetes, and a family history of the condition.

#### Symptoms to look out for:

A finger that has started to contract (bend downwards) or a noticeable lump in the palm.

It most commonly affects the ring and little finger, but can appear in any finger or even the thumb.

#### Common Cause of a Palm Lump: Thumb Arthritis

Thumb arthritis frequently affects the basal joint at the base of the thumb. This can make everyday small tasks, like doing up buttons, quite challenging.

### Symptoms to look out for:

Pain and stiffness at the base of the thumb.

A reduction in grip strength.

Clicking and cracking sounds in the joint with movement.

### Trigger Finger

Trigger finger happens when a tendon in the front of your hand thickens and gets "caught," causing your finger to lock in a bent position.

### Symptoms to look out for:

A finger that locks down in a bent position.

A clicking sound or sensation when trying to straighten the finger.

It can affect any finger, and sometimes the thumb.

Pain that radiates up the arm from the affected finger.

### Why Choose Us? What Our Patients Say:

"An extremely nice man. Professional but very pleasant and caring. He listened to me and took the time to explain things and advise me. I felt confident in the treatment offered and would have no hesitation in consulting him again and would recommend him to others".

"I have been treated by Mr Shyamalan before and find him excellent. That is the main reason for using the clinic".

"Genuinely caring surgeon, very happy with how I was treated".

"I can only say 5 stars for Mr Shyamalan. Friendly, kind and very easy to talk to. Very happy after keyhole surgery to help my wrist problems. Highly recommended".

### Get In Touch – We Can Help

If you're experiencing any of the symptoms listed above, and if hand pain is getting in the way of your day-to-day life, please don't hesitate to get in touch with us. We're here to help you understand your condition and find the right solution to get you back to doing the things you love.

www.midlandhandclinic.com

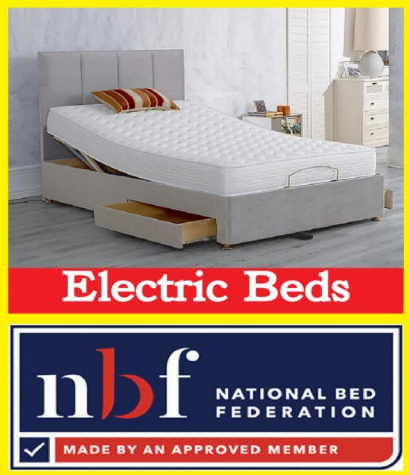
# RCN BEDS FURNITURE



**SAVE**



**HUGE SELECTION - GREAT PRICES**



**OPEN 6 DAYS – 9AM - 5PM**



**rcn**  
Beds & Furniture

**HENLEY ROAD,  
COVENTRY  
CV2 1AB**

**02476  
603254**

# Keeping the costs down over the longer journeys



AS FAMILIES plan long car journeys for their summer getaways, a car parts expert has revealed ten simple ways drivers can improve their vehicle's fuel efficiency and save money on its running costs.

Kazimieras Urbonas, Supplier Excellence Manager at Ovoko - ovoko.fr - shared his advice for motorists looking to reduce fuel consumption amidst ongoing concerns about transport emissions and running costs.

He said: "Many drivers are unaware that small changes to their driving habits and regular maintenance can make a substantial difference to fuel economy.

"The techniques below could help motorists reduce fuel consumption by between five to 10 per cent long-term, potentially saving individual drivers over £96 annually."

**Check tyre pressure regularly** - Tyres underinflated by just 15psi can increase fuel consumption by around six per cent. Checking tyre pressure once a month takes minutes. An easy way to check is for drivers to press

down on the tyre with their fingers, if it deforms, it needs inflating. Drivers should follow the manufacturer's recommended pressure settings, usually found in the vehicle handbook or on a sticker inside the driver's door frame.

**Maintain vehicles properly** - Regular servicing ensures engines run efficiently. A well-maintained engine can use up to 30 per cent less fuel than a poorly maintained one and something as simple as replacing a clogged air filter can improve fuel consumption by up to 10 per cent.

**Remove unnecessary weight** - Mr Urbonas explained that every extra 45kg carried reduces fuel efficiency by approximately one to two per cent. Many drivers use their cars as mobile storage, keeping golf clubs, tools or unnecessary items in the boot permanently, essentially paying to transport items they do not need at that time.

**Reduce aerodynamic drag** - Empty roof racks and boxes can

increase fuel consumption by up to 10 per cent due to additional drag. It is advised to remove roof accessories when not in use to maintain better fuel economy.

**Drive smoothly** - Accelerating gently, maintaining steady speeds and anticipating traffic flow makes a significant difference. Mr Urbonas added: "Aggressive driving with rapid acceleration and braking can increase fuel consumption by 15 to 30 per cent at motorway speeds and 10 to 40 per cent in stop-and-go traffic."

**Use the correct gear** - Driving at lower RPMs in the highest suitable gear reduces fuel consumption. Modern cars typically perform most

efficiently when changing up at around 2,000 RPM for diesel and 2,500 RPM for petrol engines. Additionally, many modern cars have indicators for changing gears at the ideal time.

**Minimise engine idling** - A stationary car with the engine running gets zero miles per gallon. If you're likely to be stationary for more than 10 seconds, turn your engine off. Many newer vehicles have automatic start-stop technology, which can reduce fuel consumption by five to 10 per cent in urban driving.

**Plan journeys efficiently** - Combining multiple errands into one trip saves fuel as cold engines use more fuel than warm ones.

Mr Urbonas said: "Planning routes to avoid congestion and using satnav systems to find the quickest path can reduce fuel use significantly."

**Use air conditioning wisely** - Air conditioning can increase fuel consumption by up to 10 per cent. At lower speeds, opening windows is more efficient than using air conditioning, but at higher speeds, the aerodynamic drag from open windows uses more fuel than air conditioning.

**Use the correct engine oil** - Using the manufacturer's recommended grade of motor oil can improve fuel economy by one to two per cent. Modern synthetic oils can also help engines operate more efficiently.

## Check out our E-Editions!

**Coventry Observer** .co.uk

**Upgraded route set to improve**

Gain Much Needed Extra Space With Our New Offer For Your Family And Friends

**Windows Plus**

Windows | Doors | Conservatories | Fences | Patios & Soffits

02476 230222

www.windows-plus.co.uk

**Rugby & Lutterworth Observer**

**Izzy di her to**

**DRIVES**

Are you looking to... your driveway

0800 303259 | 07773 911552 | www.drives4u.co.uk

**Leamington Observer**

**Homes to a re**

**DRIVES**

Are you looking to... your driveway

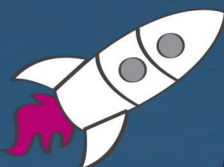
0800 303259 | 07773 911552 | www.drives4u.co.uk

[www.coventryobserver.co.uk/editions](http://www.coventryobserver.co.uk/editions)  
[www.rugbyobserver.co.uk/editions](http://www.rugbyobserver.co.uk/editions)  
[www.leamingtonobserver.co.uk/editions](http://www.leamingtonobserver.co.uk/editions)

The same paper you love  on your **mobile, tablet and computer**

# Exceptional Early Years Education in Warwickshire

At Little Lodge and Little Prep, we offer a warm, nurturing and inspiring environment for children aged 6 months to 4 years. With a shared commitment to high-quality care and early education, our nurseries are located in the heart of Leamington Spa and Stratford-upon-Avon, providing a 'home-from-home' setting where each child is supported to thrive.



## Little LODGE

 Leamington Spa

Located within the grounds of **Arnold Lodge School**, Little Lodge offers a calm and caring nursery setting in the heart of Leamington Spa.

[www.thelittlelodgenursery.com](http://www.thelittlelodgenursery.com)

 01926 886003

 [admissions@thelittlelodgenursery.com](mailto:admissions@thelittlelodgenursery.com)

31-33 Binswood Avenue, Leamington Spa CV32 5SE



## Little PREP

 Stratford-upon-Avon

Situated at **Stratford Preparatory School**, Little Prep is a welcoming and enriching nursery space for young learners.

[www.littleprep.co.uk](http://www.littleprep.co.uk)

 01789 297993

 [admissions@stratfordprep.co.uk](mailto:admissions@stratfordprep.co.uk)

Church House, Old Town, Stratford-Upon-Avon CV37 6BG

Book a visit 



Book a visit 

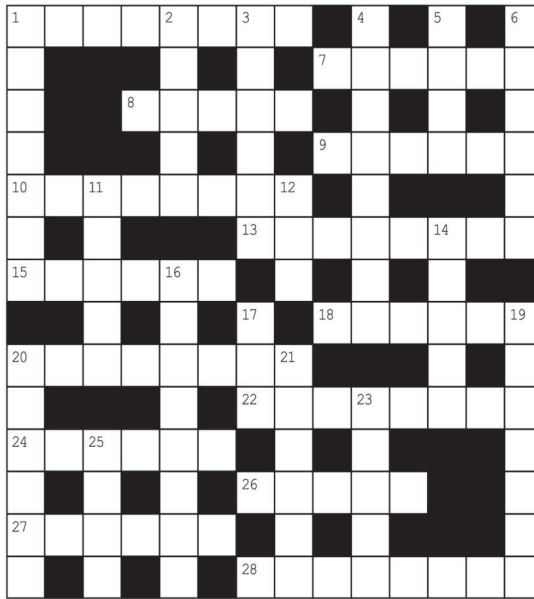




# GENERAL KNOWLEDGE CROSSWORD

## ACROSS

- 1 See 12 Down
- 7 The coupy or its fur (6)
- 8 Score of one over par for a hole in golf (5)
- 9 Zodiac sign 'The Fishes' (6)
- 10 French Protestant (8)
- 13 Country of south-east Asia, capital Bangkok (8)
- 15 Large prawns (6)
- 18 See 5 Down
- 20 Orchestral composition illustrating a poetic idea (4,4)
- 22 Richmond is the capital of this state of the USA (8)
- 24 One who governs during the illness, etc., of a sovereign (6)
- 26 & 14 Down Morasses east of the Shannon, Republic of Ireland (3,2,5)
- 27 Fibrous pod used as a sponge (6)
- 28 A former British coin (8)



## DOWN

- 1 God of wine (7)
- 2 Electrode at which positive current enters a device (5)
- 3 The dwarf leopard (6)
- 4 Art of boxing (8)
- 5 & 18 Across Novelist famous for The Mask of Dimitrios, Journey Into Fear, etc (4,6)

- 6 Small active plant pest (6)
- 11 Corn in general (5)
- 12, 1 Across, 19 Down & 25 Down Poem by Oscar Wilde (3,6,2,7,4)
- 14 See 26 Across
- 16 A fop or coxcomb (8)
- 17 Monetary unit of Bulgaria (3)

- 19 See 12 Down
- 20 Marine reptile (6)
- 21 Shrubby plant or tree with 'flowers' of small, fluffy, yellow balls (6)
- 23 Thin, fluid mortar for filling joints (5)
- 25 See 12 Down

# SOLUTIONS

**General Knowledge Crossword**  
 ACROSS: 1 Ballad of; 7 Nutria; 8 Bogey; 9 Pices; 10 Huguenot; 13 Thailand; 15 Scampi; 18 Ambler; 20 Tone Poem; 22 Virginia; 24 Regent; 26 Bog of; 27 Looftah; 28 Farthing.  
 DOWN: 1 Bacchus; 2 Anode; 3 Ocelot; 4 Pugilist; 5 Eric; 6 Capsid; 11 Gram; 12 The; 14 Allen; 16 Popinjay; 17 Lev; 19 Reading; 20 Turtle; 21 Mimosa; 23 Grot; 25 Gaol.

**Crossword**  
 ACROSS: 6 Decorum; 7 Sally; 9 Claim; 10 Elegant; 12 Intermingle; 14 Information; 18 Blatant; 19 Ideal; 21 Agree; 22 Capable; Down: 1 Reply; 2 Notion; 3 Buy; 4 Jargon; 5 Blankly; 8 Climate; 11 Teeming; 13 Analogy; 15 Outlet; 16 Ordeal; 17 Tally; 20 Van.

**Wordwheel Pathfinder**  
 Oklahoma; Paint Your Wagon; Buggy Malone; Moulins Rouge; La Land; Les Misérables; Cabaret; Singin' in the Rain; Doctor Dolittle; Mamma Mia!; Calamity Jane; An American in Paris; Mary Poppins; Hairspray; Sweet Charity.

**Ladder**  
 Time; Tire; Fire; Fare; Farm; Warm; Warp.  
**Codeword**  
 1=Y, 2=R, 3=M, 4=W, 5=B, 6=Q, 7=A, 8=K, 9=X, 10=U, 11=D, 12=V, 13=L, 14=F, 15=S, 16=H, 17=E, 18=J, 19=L, 20=P, 21=G, 22=Z, 23=T, 24=O, 25=N, 26=C.

4	6	3	8	7	2	9	1	5
2	8	1	5	9	6	7	3	4
7	9	5	4	3	1	6	8	2
9	7	8	2	6	3	4	5	1
1	4	7	8	5	2	9	3	
5	3	2	9	1	4	8	7	6
6	5	7	1	4	8	3	2	9
8	1	4	3	2	9	5	6	7
3	2	9	6	5	7	1	4	8

3	2	5	1	7	4	9	8	6
6	1	8	3	5	9	2	4	7
4	9	7	2	8	6	5	3	1
8	7	3	6	9	1	4	2	5
5	6	2	7	4	3	1	9	8
9	4	1	5	2	8	7	6	3
2	5	6	4	3	7	8	1	9
1	8	4	9	6	5	3	7	2
7	3	9	8	1	2	6	5	4

Hard

Easy  
Sudoku



CoventryObserver.co.uk LeamingtonObserver RugbyObserver

**It's time to Like, Follow & Subscribe**

Don't be LEFT BEHIND.....

**BREAKING NEWS  
WHAT'S ON  
SPORT  
INTERVIEWS**

- CoventryObserver
- LeamingtonObserver
- RugbyObserver

- @CovObserverNews
- @LeamObs
- @RugbyObserver

- CovObserver
- Leamington.Observer
- Rugby.Observer

# Russell Lane

The Jewellers of Warwick

---

Sell your gold in any condition

**IMMEDIATE CASH OFFER**

No appointment necessary

---



## **REPAIRS AND JEWELLERY VALUATIONS**

From ring sizing and rhodiuming to replacing missing stones, all work undertaken.

---

Website: [www.russell-lane.co.uk](http://www.russell-lane.co.uk)

Tel: 01926 494 494 | Email: [sales@russell-lane.co.uk](mailto:sales@russell-lane.co.uk)

2 High Street, Warwick CV34 4AP

# Motoring

[www.carfinder247.co.uk](http://www.carfinder247.co.uk)

TELEPHONE 01926 451900 FACSIMILE 01527 584371



## Skoda takes home top award

**SKODA has dominated the 2025 Auto Express New Car Awards by claiming four category wins along with the coveted Car of the Year award.**

The new Elroq took top honours by winning both its sector and the overall title.

The brand's latest all-electric SUV was joined on the winner's podium by the Octavia, Superb and Kodiaq.

The Elroq's win marks the fifth time that a Skoda model has been named Auto Express Car of the Year.

Leading the charge was the new Elroq, which was named Best Mid-size SUV of the Year. The second

Skoda to be built on the Volkswagen Group MEB platform, the Elroq impressed the judges with its broad skill set and intelligent design.

The Auto Express test team said: "It offers impressive performance and all of the practical touches that Skoda is now famous for to make it a front-runner in the family electric car class.

"An SUV-sized car for hatchback money, the Elroq is impressively spacious compared with similarly priced alternatives."

The Octavia took top honours in the competitive Family Car category.

Summarising the Octavia's appeal, Auto Express's road test team said: "In some ways, the Skoda Octavia

has transformed significantly over the years, but in the key areas where it excels – comfort, practicality and value for money – it hasn't.

"Few family cars offer this much space, let alone combined with such a comfortable driving experience."

The Octavia's latest win makes it one of the most successful models in Auto Express awards history.

It was crowned Auto Express Car of the Year and Family Car of the Year in 2021, while the estate model took the honours in the Estate Car of the Year category in 2021 and 2022.

Another Skoda adding to its already sizeable award collection was the new Superb, which again proved unbeatable in the Best

Estate Car category. Repeating its victory from 2024, the Superb wowed the judges with its practicality and unbeatable value.

The Auto Express road test panel said: "The Superb Estate delivers on space, quality and cleverness just as strongly as the previous model. There have been thoughtful improvements to the interior design and to the hybrid powertrains to boost efficiency and lower running costs.

"It roundly covers all the bases a family car buyer looking for something with additional practicality could want. For those not taken with an SUV, the Superb Estate makes for a brilliant package."

The new Kodiaq took a comforta-

ble victory in the Large SUV sector. The SUV impressed the judges with its practicality, driving experience and attention to detail.

The judging team said: "We're fans of the second-generation Skoda Kodiaq because it builds on the proven formula of the original model. It's spacious, efficient and features plenty of clever touches, while the cabin has taken a step upmarket when compared with the original. A cargo volume of 2,035 litres is among the best of any seven-seat SUV on sale."

Auto Express Editor Paul Barker said: "It was another fabulous year for Skoda."

PUBLIC NOTICES

PUBLIC NOTICES

Warwickshire County Council

ROAD TRAFFIC REGULATION ACT 1984

Warwickshire County Council has made the following Temporary Traffic Orders:

BAWMORE ROAD, RUGBY

Order Effect: Road closed to vehicular traffic. Reason for Order: To enable valve reset works. Order Commences: 9 July 2025 for up to 18 months. Anticipated Completion: 11 July 2025. Access & Diversion: The Green and vice versa. Contractor: Chevron TM Ltd, Tel: 03300 080 820.

BELL LANE, MONKS KIRBY

Order Effect: Road closed to vehicular traffic. Reason for Order: To enable utility works. Order Commences: 7 July 2025 for up to 18 months. Anticipated Completion: 8 July 2025. Access & Diversion: Main Street, Millers Lane and vice versa. Contractor: Chevron TM Ltd, Tel: 03300 800 820.

CRONATION ROAD, CHURCH LAWFORD

Order Effect: Road closed to vehicular traffic. Reason for Order: To enable works for replacement and provision of new telegraph poles. Order Commences: 10 July 2025 for up to 18 months. Anticipated Completion: 10 July 2025. Access & Diversion: Coronation Road, Ling Lane, Lawford Heath Lane, Coventry Road, Rugby Road and vice versa. Contractor: Core Highways, Tel: 03300 169 688.

RYDAL CLOSE, BROWNISOVER, RUGBY

Order Effect: Road closed to vehicular traffic. Reason for Order: Works to lay duct in the carriageway and footway. Order Commences: 7 July 2025 for up to 18 months. Anticipated Completion: 8 July 2025. Access & Diversion: No diversion available. Contractor: M J Quinn, Tel: 01543 547 118.

LEICESTER ROAD, CHURCHOVER

Order Effect: Road closed to vehicular traffic as follows: West bound from Overview Way/Central Park Drive roundabout up to the M6 southbound exit slip including the westbound side of the roundabout at J1. 11/07/2025 20:00 to 14/07/2025 06:00 01/08/2025 20:00 to 04/08/2025 06:00 18/07/2025 20:00 to 21/07/2025 06:00 08/08/2025 20:00 to 09/08/2025 06:00 25/07/2025 20:00 to 28/07/2025 06:00 East Bound - A426 from the A5 Gibbet roundabout to the M6 northbound exit slip including the eastbound side of J1 roundabout. 15/08/2025 20:00 to 16/08/2025 06:00 Reason for Order: To enable weekend works in conjunction with the M6 carriageway improvement works. Order Commences: 11 July 2025 for up to 18 months. Access & Diversion: Leicester Road, Central Park Drive, Newbold Road, Main Street, Harborough Road, Rugby Road, Paliton Road, Lutterworth Road, A5, Watling Street, Coventry Road and vice versa. Contractor: Kier Transportation, Tel: 07751 733 753.

Warwickshire County Council proposes to make the following Temporary Traffic Orders:

CHESTER STREET, RUGBY

Order Effect: Road closed to vehicular traffic between Corbett Street and Abbey Street. Reason for Order: To enable pipe renewal works. Order Commences: 22 July 2025 for up to 18 months. Anticipated Completion: 24 July 2025. Access & Diversion: Abbey Street, Cambridge Street, Hunter Street, Corbett Street and vice versa. Contractor: Chevron TM Ltd, Tel: 03300 800 820.

LITTLE CHURCH STREET, CALDECOTT, RUGBY

Order Effect: Road closed to vehicular traffic. Reason for Order: Joint hole works in footway for new supply, closed 18.00hrs-07.00 hrs. Order Commences: 21 July 2025 for up to 18 months. Anticipated Completion: 21 July 2025. Access & Diversion: Little Church Street, Market Place, Church Street, Clifton Road, Whitehall Road, Hillmorton Road and vice versa. Contractor: Network Plus, Tel: 08006 783 105.

For all of the above temporary orders, pedestrian access to and egress from properties and land situated adjacent to the length of road to be closed will be maintained at all times. Vehicular access will be maintained where possible. To report any problems with these works or for further details of our current & planned roadworks visit our website warwickshire.gov.uk/roadworksmap or call us 01926 412515.

THE WARWICKSHIRE COUNTY COUNCIL (MAIN STREET C206, WILLEY, RUGBY) (20 MPH SPEED LIMIT) ORDER 2025

Warwickshire County Council proposes to revoke the existing 30mph speed limit and introduce a 20mph speed limit within the village of Willey, Rugby, on the lengths of roads described in the Schedule below. A copy of this notice, the proposed Order, the plans showing the lengths of roads affected and a statement of the Council's reasons for proposing to make the Order, can be inspected at Shire Hall, Market Place, Warwick during usual opening hours and are available to view on the website at https://www.warwickshire.gov.uk/news/20208/rugby-borough. Any enquiries relating to these proposals may be made to Chris Round (Tel: 01926 413789) or emailed to pmc@warwickshire.gov.uk. Any objections to or representations in support of the proposals, which must be in writing and specify the grounds on which they are made, should be addressed to Chris Round, County Highways Forestry & Minor Works Team, Communities Directorate, Warwickshire County Council (telephone number 01926 413789) or send by email to pmc@warwickshire.gov.uk using subject header "The Village of Willey - 20mph Speed Limit Order". Objections, representations, and the name of the objector or person making a representation, will normally be treated as public information and may be published. For further information on how Warwickshire County Council processes personal data please refer to the Customer Privacy Notice which is available at https://www.warwickshire.gov.uk/privacy. Objections and representations must be sent so as to be received by 28th July 2025.

SCHEDULE (20 MPH SPEED LIMIT)

1) Main Street, Willey.

From a point 138 metres North of its junction with Coal Pit Lane for a distance of 600 metres in a northerly direction through the Village. S Duxbury, Director of Strategy, Planning & Governance, Shire Hall, Warwick CV34 4RL Date 4 July 2025

Classified

TELEPHONE 01527 588688 FACSIMILE 01527 584371

PUBLIC NOTICES

Warwickshire County Council

ROAD TRAFFIC REGULATION ACT 1984

Warwickshire County Council has made the following Temporary Traffic Orders: A423 COVENTRY ROAD, STATION ROAD, OXFORD ROAD, MARTON ROAD, MARTON/LONG ITCINGTON

Order Effect: Road closed between junctions with Birdingbury Road and Cox Crescent. Reason for Order: Carriageway resurfacing works, closed 20.00hrs - 06.00hrs, every night. Order Commences: 7 July 2025 for up to 18 months. Anticipated Completion: 23 July 2025.

Access & Diversion: A423, A425, B4455, A423 and vice versa. Access/Egress to be maintained where possible to businesses and residents only. Access/Egress to/from adjoining roads may also be restricted whilst works are in progress. Contractor: Balfour Beatty, Tel: 03452 415 302.

BACK LANE, BIRDINGBURY

Order Effect: Road closed between Leamington Hastings Road. Reason for Order: To safely enable works to lay approx 300 metres of duct in the verge. Order Commences: 9 July 2025 for up to 18 months. Anticipated Completion: 18 July 2025.

Access & Diversion: Leamington Hastings Road, Main Street, Back Lane and vice versa. Contractor: Callan Connect, Tel: 01213 275 167.

Warwickshire County Council proposes to make the following Temporary Traffic Orders:

PUBLIC FOOTPATH F0889 MILL CRESCENT TO WELSH ROAD WEST, SOUTHAM

Order Effect: Footpath closed from its junction with Welsh Road West to Mill Crescent. Reason for Order: Footpath reconstruction and associated works. Order Commences: 21 July 2025 for up to 6 months. Anticipated Completion: 25 July 2025.

Access & Diversion: Welsh Road West, Mill Road, Mill Crescent and vice versa. No access/egress for all users. Contractor: Balfour Beatty, Tel: 03452 415 302.

D2360 MILL CRESCENT, SOUTHAM

Order Effect: Road closed from opposite No. 59 to outside No.79. Reason for Order: Footpath reconstruction works, closed 08.00hrs - 17.00 hrs. Order Commences: 21 July 2025 for up to 18 months. Anticipated Completion: 25 July 2025.

Access & Diversion: No suitable diversion. Access/Egress to be maintained where possible to businesses and residents only. Contractor: Balfour Beatty, Tel: 03452 415 302.

For all of the above temporary orders, pedestrian access to and egress from properties and land situated adjacent to the length of road to be closed will be maintained at all times. Vehicular access will be maintained where possible.

To report any problems with these works or for further details of our current & planned roadworks visit our website warwickshire.gov.uk/roadworksmap or call us 01926 412515. S Duxbury, Director of Strategy, Planning & Governance, Shire Hall, Warwick CV34 4RL Date 4 July 2025

LICENSING ACT 2003 - Public Notice

Simran Dharwal is applying for the new grant of a Premises Licence for The Truth (Basement Bar) 2 Victoria Terrace, Leamington Spa, CV31 1AB. If granted the application will allow the following licensable activities to take place: Sale of Alcohol On the Premises, Provision of Regulated Entertainment, Provision of Late Night Refreshment

Any person wishing to make representations in relation to this application may do so by writing to the Licensing Authority: Warwick District Council Town Hall, Parade Royal Leamington Spa Warwickshire, CV32 4AT licensing@warwickdc.gov.uk Representations may only be made for 28 consecutive days from the date of this Notice.

A copy of the application for the grant of the above licence is kept by the Licensing Authority at the above address. The application can be viewed Monday to Thursday 9.00 am to 5.00 pm, and 9.00 am to 4.30 pm on Fridays, except Bank Holidays. It is an offence knowingly or recklessly to make a false statement in connection with an application. The maximum fine for which a person is liable on summary conviction for making a false statement is a Level 5 fine on the Standard Scale. 27th June 2025

PUBLIC NOTICES

Warwickshire County Council

ROAD TRAFFIC REGULATION ACT 1984

Warwickshire County Council has made the following Temporary Traffic Orders: STRETTON ROAD, WOLSTON

Order Effect: Road closed to vehicular traffic. Reason for Order: Works to renew defective pole in verge. Order Commences: 9 July 2025 for up to 18 months. Anticipated Completion: 9 July 2025.

Access & Diversion: A45, London Road, Wolston Lane, Warwick Road, Warwick Road Service Road and vice versa. Contractor: M J Quinn, Tel: 01543 547 118.

Warwickshire County Council proposes to make the following Temporary Traffic Orders:

CRACKLEY LANE AND BOCKENDON ROAD, STONELEIGH

Order Effect: Roads closed to vehicular traffic. Reason for Order: Engineers to access overhead structures for cabling work. Order Commences: 21 July 2025 for up to 18 months. Anticipated Completion: 25 July 2025.

Access & Diversion: Crackley Lane, Cryfield Grange Road, Kenilworth Road, Gibbet Hill Road, Kirby Corner Road, Westwood Heath Road and vice versa. Contractor: Sunbelt Rentals Ltd, Tel: 03700 500 792.

For all of the above temporary orders, pedestrian access to and egress from properties and land situated adjacent to the length of road to be closed will be maintained at all times. Vehicular access will be maintained where possible.

To report any problems with these works or for further details of our current & planned roadworks visit our website warwickshire.gov.uk/roadworksmap or call us 01926 412515. S Duxbury, Director of Strategy, Planning & Governance, Shire Hall, Warwick CV34 4RL Date 4 July 2025

PUBLIC NOTICES

Rugby Borough Council Town and Country Planning Act 1990 (as amended)

Application Number R25/0527 2, OAKWOOD HOUSE, THE HEATHLANDS, SOUTH ROAD, CLIFTON UPON DUNSMORE, RUGBY, CV23 0GZ

Proposed material changes to windows and alterations to doors. This development may affect a Conservation Area

Members of the public may inspect copies of the application, the plans and documents submitted with it online at: www.planningportal.rugby.gov.uk or in an electronic form at: Town Hall, Evreux Way, Rugby CV21 2RR between the hours of 9.00 am and 5.00 pm Monday to Friday until 25 July 2025. Please note a planning officer would not be present.

If you wish to make an appointment to discuss the application, please contact the case officer. Any person who wishes to make representation to the above mentioned Council about the applications should make them online - www.planningportal.rugby.gov.uk (search for application number and select comment) - or in writing by that date to The Chief Officer Growth and Investment, Town Hall, Rugby, CV21 2RR.

If an application is determined by the Planning Committee, members of the public may have the opportunity to speak at the meeting. More details about public speaking are available from the Council or on-line at: www.rugby.gov.uk/speakingatplanning For household or minor commercial applications, in the event of an appeal against a refusal of planning permission, dealt with on the basis of representations in writing, any representations made will be sent to the Secretary of State, and there will be no further opportunity to comment at the appeal stage. Nicola Smith Chief Officer - Growth and Investment MRTPI

PUBLIC NOTICES

ENVIRONMENT AGENCY Water Resources Act 1991 (as amended by the Water Act 2003) Notice of application for a transfer licence to abstract (take) water

MWH Treatment Limited has applied to the Environment Agency for a licence. The Environment Agency is giving notice of this application, in accordance with Section 37 of the Water Resources Act 1991 and Regulation 6 of the Water Resources (Abstraction and Impounding) Regulations 2006.

The application is for a licence to abstract water from Warwickshire Avon - Secondary Mudrocks underground strata within an area defined by National Grid References SP 53130 82967, SP 53213 83003, SP 53252 82929 and SP 53163 82889 to transfer it to surface watercourse River Swift at National Grid Reference SP 53025 82766 without intervening use.

The application is to abstract water as follows: • 50 cubic metres an hour • 400 cubic metres a day • 73,000 cubic metres a year • between 01 January and 31 December inclusive in each year. Abstraction will take place each day as appropriate. Further details are: the proposed abstraction lies within the Warwickshire Avon Catchment Abstraction Licensing Strategy reporting area.

Please contact us via email or use the number against or an interest in the Estate of the above named, late of Clifton Court Nursing Home (Lbourne Road Clifton upon Dunsmore Rugby, who died on 04/11/2021, and required to send writing particulars thereof to the undersigned on or before 05/09/2025, after which date the Estate will be distributed having regard only to the claims and interests of which they have had notice.

ANGELS SOLICITORS LLP, 117-119 Union Street Coventry CV1 2NY

PUBLIC NOTICES

NOTICE OF MAKING A PUBLIC PATH ORDER

TOWN AND COUNTRY PLANNING ACT 1990 SECTION 257 RUGBY BOROUGH COUNCIL THE BOROUGH OF RUGBY (PART OF FOOTPATH R235 DIFBAR ROAD, DUNCHURCH) PUBLIC PATH ORDER 2025

The above Order made on the 2 July 2025 under Section 257 of the Town and Country Planning Act 1990 will:

Stop up part of footpath from Point A (Grid reference 448863 270993) north for approximately 3.2 metres to Point B (Grid reference 448863 270990), south easterly for approximately 188 metres to Point H (Grid reference 448992 270855), south for approximately 22 metres to Point G (Grid reference 448992 270832) and create a new footpath from Point A (Grid reference 448863 270993) south westerly for approximately 49 metres to Point C (Grid reference 448830 270958), curving slightly easterly for approximately 8.8 metres to Point D (Grid reference 448836 270954), easterly for approximately 132 metres to Point E (Grid reference 448938 270884), turning southerly for approximately 46 metres to Point F (Grid reference 448923 270843), finally turning easterly for approximately 71 metres to Point G (Grid reference 448991 270833).

A copy of the Order and the order map can be viewed at the Town Hall, Evreux Way, Rugby, CV21 2RR during office opening hours (9am to 5pm, Monday to Friday). The order and order map can also be viewed on the council's website: www.rugby.gov.uk/R235 Copies of the Order and map can be purchased at the price of £5. Email legal.services@rugby.gov.uk

Any representations about, or objections to, the Order may be sent in writing to the Chief Officer for Legal and Governance, Rugby Borough Council, Town Hall, Evreux Way, Rugby, CV21 2RR no later than 1 August 2025 and should state the grounds on which they are made.

If no such representations or objections are duly made, or if any so made are withdrawn, the Rugby Borough Council may confirm the order as an unopposed order. If the order is sent to the Secretary of State for the Environment, Food and Rural Affairs for confirmation, any representations and objections which have not been withdrawn will be sent with the Order. Dated: 3 July 2025 Authorised officer on behalf of the Council The Officer appointed for this purpose

PUBLIC NOTICES

GOODS VEHICLE OPERATOR'S LICENCE

ELIS UK LIMITED of First Floor, Chinnham Gate, Crookford Lane, Basingstoke, RG24 0NA, is applying to change an existing licence as follows: To add an operating centre to keep 3 goods vehicles and 0 trailers at Unit 1, Enterprise Park, Luttworth, LE17 4WZ.

Owners or occupiers of land (including buildings) near the operating centre(s) who believe that their use or enjoyment of that land would be affected, should make written representations to the officer of the Traffic Commissioner, Quarry House, Quarry Hill, Leeds, LS2 7UE stating their reasons, within 21 days of this notice.

Representors must at the same time send a copy of their representations to the applicant at the address given at the top of this notice. A Guide to Making Representations is available at https://www.gov.uk/government/publications/a-guide-to-making-representations-to-objections-and-complaints-goods-vehicle-operator-licensing.

Representors must at the same time send a copy of their representations to the applicant at the address given at the top of this notice. A Guide to Making Representations is available at https://www.gov.uk/government/publications/a-guide-to-making-representations-to-objections-and-complaints-goods-vehicle-operator-licensing.

PUBLIC NOTICES

GEORFFREY JOHN NUTLEY MARTIN (Deceased)

Pursuant to the Trustee Act 1925 any persons having a claim against or an interest in the Estate of the above named, late of Clifton Court Nursing Home (Lbourne Road Clifton upon Dunsmore Rugby, who died on 04/11/2021, and required to send writing particulars thereof to the undersigned on or before 05/09/2025, after which date the Estate will be distributed having regard only to the claims and interests of which they have had notice.

ANGELS SOLICITORS LLP, 117-119 Union Street Coventry CV1 2NY

PUBLIC NOTICES

THOMAS LYTLE (Deceased)

Pursuant to the Trustee Act 1925 any persons having a claim against or an interest in the Estate of the above named, late of 44 Long Furze Rugby, CV22 5QT, who died on 26/12/2024, are required to send writing particulars thereof to the undersigned on or before 05/09/2025, after which date the Estate will be distributed having regard only to the claims and interests of which they have had notice.

KUNDERT SOLICITORS LLP, 26 Regent Street, Rugby, CV21 2PS

PUBLIC NOTICES

Keeping you up to date with all the latest information on Planning Proposals, Traffic Notices, Goods Vehicle Operator Licences, Licences To Sell Alcohol, Probate Notices....

# Classified

TELEPHONE 01527 588688 FACSIMILE 01527 584371

## PUBLIC NOTICES

### PUBLIC NOTICES



**Notice of Byelaw Revocation**

A Byelaw made by the Council on 28th January 1947 prohibits the use by persons riding bicycles, tricycles or other similar vehicles on the following footpaths:

- Church Walks
- Park Walk
- Footpath from Park Road to Kew Road
- Footpath from Plowman Street to West Leys
- Footpath from Lawford Road to Pinfold Pit
- Footpath from Avenue Road to Newbold
- Footpaths on Bilton Green and Footpath leading from Bilton Green to Magnet Lane
- Footpaths by Rounds Gardens
- Castle Walk
- Footpath from Rainsbrook Avenue to Ashlawn Road
- Footpath from Pendred Road to New Street
- Footpath from High Street to School Street, Hillmorton
- Footpath from York Street to Hill Street
- Footpath from Glebe Crescent to New Street
- Footpath from Kingsley Avenue to Deerings Road
- Footpath from Chamberlain Road to Bucknill Crescent
- Footpath from Cromwell Road to Rugby Recreation Ground
- Footpath from Magnet Lane to Bilton Allotments
- Footpath from Parkfield Road to L.M.S. Railway Bridge, near Pinfolds Pit
- Footpath from Craven Road to Graham Road
- Footpath from Pytchley Road to Percival Road
- Footpath from Hart Close to Lower Hillmorton Road
- Footpath - L.M.S. Railway Bridge near Park Road to Bridge over River Avon

Any person offending against the byelaw shall be liable on summary conviction to a fine not exceeding five pounds.

The Byelaw was made in 1947 and therefore there has been various changes to the built environment but also transportation modes. The Council are therefore seeking to revoke this byelaw under The Byelaws (alternative Procedure) (England) Regulations 2016 and put in place other measures to control cycling and wheeling on the footpaths listed above, where it is deemed necessary.

If you have any representations on the above please make them within 30 days of this notice either in writing to **Regeneration, Town Hall, Evreux Way, Rugby, CV21 2RR** or via email to **regeneration@rugby.gov.uk**

**Goods Vehicle Operator's Licence**

Springfarm Architectural Mouldings Group LTD of Newport Industrial Estate, Greystone Road, Antrim, Northern Ireland BT41 2RU is applying for a licence to use **Torrington Avenue, Coventry, CV4 9HP** as an operating centre for **10 goods vehicles and 20 trailers.**

Owners or occupiers of land (including buildings) near the operating centre(s) who believe that their use or enjoyment of that land would be affected, should make written representations to the Traffic Commissioner at Quarry House, Quarry Hill, Leeds, LS2 7UE, stating their reasons, within 21 days of this notice. Representors must at the same time send a copy of their representations to the applicant at the address given at the top of this notice. A Guide to Making Representations is available from the Traffic Commissioner's office.

**Goods Vehicle Operator's Licence**

TS Powerlines Ltd of 1 Eaglesfield, Leers, Lutterworth LE17 5PG, is applying for a licence to use **Hans Farm Industrial Estate, Bileborough Road, Bilesworth, Leicestershire LE17 4LR** as an operating centre for **3 goods vehicles and 2 trailers.**

Owners or occupiers of land (including buildings) near the operating centre(s) who believe that their use or enjoyment of that land would be affected, should make written representations to the Traffic Commissioner at Quarry House, Quarry Hill, Leeds LS2 7UE stating their reasons, within 21 days of this notice. Representors must at the same time send a copy of their representations to the applicant at the address given at the top of this notice. A Guide to making representations is available from the Traffic Commissioner's Office.

## ANNOUNCEMENTS

### FUNERAL DIRECTORS



**Henry Ison & Sons Funeral Directors**

**A Funeral Plan to suit you**



Plan ahead with a Choice Funeral Plan Visit [henryison.co.uk/choice](http://henryison.co.uk/choice)

**02476 997 811**

Branches in Coventry (Binley Rd, Allesley Old Rd and Deventry Rd), Kenilworth and Leamington Spa




For terms, conditions, exclusions and limitations, visit [choiceplan.co.uk/terms](http://choiceplan.co.uk/terms)

If you have a message for a loved one, give our team a call



**01527 588688**

## SALES & WANTS

### MISCELLANEOUS

**BEDS NEW** Doubles £95 Singles £59 King size £159. Second hand doubles £49 Singles £29 Fridges £49 Freezers £59 Can deliver 07703 925662

**RECLINER CHAIR** electric rise & recline £169 Manual recline chair £60 High seated chair £40 Can deliver 07703 925662

**TITAN** 40cm electric chain saw 2000W, chain just sharpened, anti kick back, £20.00 phone 07780900015

**LADIES** Phase Eight navy / white shorts, size 12 £3. Tel: 07813 706 158 (Shirley area)

**SJP** Born Lovely 50ml EDP and 10ml EDP for handbag £12 Tel: 07813 706 158 (Shirley area)

### MISCELLANEOUS

**LADIES** pink / white Adidas cloudfoam comfort trainers, size 8.5, brand new! £25 Tel: 07813 706 158 (Shirley area)

**JANE** Norman dress, size 10, brand new! £20 Tel: 07813 706 158 (Shirley area)

**LADIES** black lace up espadrilles, flat heel, size 8 / 41, brand new! £10 Tel: 07813 706 158 (Shirley area)

**WILLIAM** and Mary complete dvd box set £10 Tel: 07813 706 158 (Shirley area)

**19** CDs - sealed for sale. Tel 0788 2124182

**SKIN** Care Gift set (4) £2. Tel: 01527 521363

**RAFFIA** for craft. Unused. 600g. £4. Tel: 01217441003

**MIAMI** Patio Set, 6 piece, brand new £40 Tel: 07769 078798

### WANTED

**\*\*WANTED: Vinyl Records CDs Cassettes**

**Vintage or New \*\***

Seeking classic rock, jazz, indie and rare finds. Cash paid

Call or text: 07765 142354 Or 01527 893992

Or email: [welston@live.com](mailto:welston@live.com)

Paul (Albatross & Doomed Records)

## SERVICES

### CONSERVATORIES & GLAZING

**DOUBLE GLAZING REPAIRS**

Locks, Hinges, Handles, Glass, Windows or Doors

New Doors/Windows Also Supplied/Fitted

**07973 200 623**

### GARDENING SERVICES

**STUART'S GARDENING SERVICES**

Landscaping & Tree Surgery  
Fencing, Slabbing, Turfing, Block Paving, Bases, Mowing, Decking, Roofing and Guttering.  
Mini-digger/Dumper  
Fully Insured. Registered carrier of waste.

**FREE ESTIMATES**

**02476 305992 • 07813 790889**  
**01788 211064**

[www.stuarts-gardening-services.yolasite.com](http://www.stuarts-gardening-services.yolasite.com)

### HOME IMPROVEMENTS

**HANDY MAN**

If you're looking for a fast and reliable service

Then call Lenny

- Plastering • Plumbing • Fencing
- Gardening • Flooring • Kitchens
- Bathrooms • Carpentry • Flat pack furniture
- Tiling • Painting

**02476 443 996**  
**07794 784 266**

**NO VAT CHARGE**

### KITCHENS

**S.W INSTALLATIONS**

**Kitchens & Bathrooms**

**FREE DESIGN & QUOTATION**

**QUALITY KITCHENS & BATHROOMS SUPPLIED & FITTED**

**PLUMBING, CARPENTRY, TILING, WORKTOP & DOOR REPLACEMENT**

(Supply & fit, supply only or fit only)

**LOCAL TRADESMAN**

**20YRS EXPERIENCE**

**NO JOB TOO SMALL**

**01926 773386 or 07971 684 353**

**SOMETHING to sell?**

You Can Raise Some Extra Cash and make someone else's Day

By SELLING Your Wonderful but Unwanted Gifts or Private Items

Simply by advertising them in **The Observer** or **The Standard**

And...if your item is valued at £500 or less - its FREE of charge in lineage (max 15 words)

But if you want your advertisement to really stand out or if your item is valued at over £500, you can place details in a boxed advertisement for just £5.75 (inc Vat)

Simply fill in the coupon below, tick the appropriate box, enclose your cheque or credit card details if required, and we'll do the rest - Or alternatively email your free ad to: [freeads@bullivantmedia.com](mailto:freeads@bullivantmedia.com)

Free Lineage (Items upto value £500)  Paid for Boxed Ad (Items of any value)

Details of Item For Sale for Publication (No Pets or Livestock or Firearms please): (MAX 15 WORDS)

.....

.....Telephone Number.....

.....

Details (Not for Publication):

Mr/Ms/Ms..... Initials..... Surname.....

Address.....

Postcode..... Telephone:..... Mobile.....

Email address.....

I enclose cheque, payable to Bullivant Media Ltd, value £.....

or alternatively

Please debit my card for £..... Visa/Mastercard/Maestro/Debit

Credit Card Number.....

Exp Date..... Start Date..... Security Number.....(Last 3 digits) Issue Number.....(if applicable)

Send to Bullivant Media, Webb House, Church Green East, Redditch, Worcestershire. B98 8BP

or email your advertisement to: [freeads@bullivantmedia.com](mailto:freeads@bullivantmedia.com)

**3 PIECE SUITE**

brown leather, perfect condition

as new

**£550**

can deliver

Telephone

**10234 567890**

(£5.75 incVAT example boxed advertisement)



**CRS LTD**  
 Spring Lane South, Malvern WR14 1AT  
 ATF's are the **ONLY** legal way to scrap your vehicles  
**BUYERS**  
 of all SCRAP Metals and SCRAP Vehicles  
 The **ONLY** authorised treatment facility in Malvern!  
 Best Prices Paid • Collection & Skip Drops Farm  
 Equipment, Copper, Brass etc. • 50 Ton Weigh Bridge  
**LD REQUIRED - 01684 578081**  
 www.crs-malvern.co.uk

# Observer SPORT

9 772040 128006  
 Published by Bullivant Media Group Ltd, Webb House,  
 Church Green East, Redditch, Worcestershire, B96 8BP  
 Printed by Newsquest, Newspaper House, Osney  
 Mead, Oxford, Oxfordshire, OX2 0EJ

**VINYL RECORDS WANTED**  
 Buying since 1978  
 Get your cash TODAY!  
 I will come to you  
**Phone PAUL**  
**01527 893992 | 07765 142354**

www.rugbyobserver.co.uk BRINGING YOU ALL THE LATEST SPORTS NEWS AND VIEWS FROM THE AREA

## Henry helps Team GB to World Cup triumph

by Aaron Sutcliffe  
 aaron.sutcliffe@bullivantmedia.com

**ROWING:** LAUREN Henry won gold again as Great Britain claimed the overall World Rowing Cup title in Lucerne, Switzerland.

Rugby-born Henry helped Team GB to a second victory in three years after triumphing in the women's single sculls event.

Henry overcame the challenge of Ireland's Fiona Murtagh to take gold while Denmark took the final place on the podium.

Henry said: "It's special because the world is here.  
 "I think in this event in Lucerne, everyone that I've raced so far this season has been here, so it's good to see where I'm at.



"The World Championships are still quite a long way away, so a lot can change, but I'm going to take what I've

learned in this racing block and put in some more work to find where I can improve.

"I'm so pleased. It has been a team effort with so many of our boats contributing to the win.

"It's so special for us to win the World Cup.

"I was told it was quite close earlier, so I'm really, really pleased that I managed to get the points we needed to win the trophy."

The 23-year-old posted the fastest time in the heats and semi-finals.

And Henry pulled clear of closest rival Murtagh in the final 500m to claim another gold medal in a time of 7 minutes 15.21 seconds with her Irish challenger more than three seconds further back.

**Lauren Henry celebrates after winning gold in Lucerne. Picture by Benedict Tufnell for British Rowing.**

## County women win Rose Bowl Trophy

**BOWLS:** WARWICKSHIRE Women overcame the county men's team to claim the annual Rose Bowl Trophy with a thrilling 91-87 success.

A pulsating encounter went down to the last wood.

Pat Gagg's side scored six shots on the last end while Jenny Corn overcame a five-shot deficit to draw shot with the last wood.

This ensured the trophy went home with the county women who denied the county men back-to-back titles.

Highest winning rink went to Maureen Edwards with Christine Harding (both Rugby Thornfield), Diane Harvey (Warwick Boat Club) and Pat Moore (Three Spires) who picked up three shots on the 13th end in a comfortable 18-8 success.

Gagg (Lillington) with Alison Boyd (Nuneaton), Joy Cooke (Sherwood Park) and Linda Linney (Stratford)

picked up six shots on the last end, having trailed through 16 ends, to win 22-13 in what proved a crucial victory.

And Sue Hornsby (Lillington) with Brenda Batt (Snitterfield), Pam Jowers (Stratford) and Liz Crispin (Wolvey) claimed a 14-12 success after taking an early six-nil advantage.

Corn with Pippa Mace, Jayne Henfrey (all Lillington) and Lynn Stringer (Ambleside) surrendered a nine-shot advantage after six ends in a 17-14 defeat.

Liz Crowther (Lillington) with Velisa Brown (Southam), Margaret Boldy (Wellesbourne) and Vanessa Taylor (Rugby Railway) lost 16-12.

And Debbie Bloxham (Stratford) with Caroline Edwards (RLS), Elaine Taylor (Stoke) and Pat Lowe (Rugby Thornfield) lost 21-11.

## CASHBROKERS

LEAMINGTON SPA

PAWNBROKING LOANS  
 SCRAP GOLD & SILVER  
 BUY BACK  
 JEWELLERY & WATCHES  
 COINS & BULLION

**01926 258252**  
 144 Parade, Leamington Spa, CV32 4AG  
 www.cashbrokersleamingtonspa.co.uk

## CASH PAID

FOR GOLD, SILVER,  
 COINS & BULLION