



**WANTED**  
**Motorcycles and Scooters**  
Any cc, condition or age,  
good prices paid  
07944 781 933 | 01926 257 643

Friday, July 11th 2025 Week 28

facebook.com/rugbyobserver

rugbyobserver.co.uk

@rugbyobserver t: 01926 451900

Your FREE edition - just pick one up and keep up with the news

# Man pulled free by PCs seconds before explosion

by **Andy Morris**  
andy.morris@bullivantmedia.com

'AN ACT of bravery without equal' - two heroic Rugby police officers who risked their lives to save the driver of a burning car have been awarded a Chief Constable's Commendation.

In July 2023, PCs Mateusz Dabrowski and Dominic Strange were conducting a routine vehicle stop that turned into a high-speed pursuit.

The pursuit took a tragic turn when the suspect's vehicle collided with another car.

The suspect's car was left trapped in a hedgerow, its front doors both wedged shut, trapping the unconscious driver.

Flames began to consume the car - but both PCs made a decision to enter the car to try to save the man.

PC Strange was in first, managing to get in through the back doors. As smoke filled the cabin, he made desperate attempts to drag the trapped man out.

Meanwhile, PC Dabrowski was spraying a fire extinguisher, frantically trying to keep his colleague and the casualty safe.

Smoke continued to fill the cabin, and it became clear the car could explode at any moment - but the



PC Dominic Strange (left) and PC Mateusz Dabrowski with their commendations.

officers continued.

Then PC Dabrowski sent a chilling radio transmission: "We're really struggling. At the moment he's not conscious, he's not breathing, he's not responding to us, boss. The vehicle with the fire, it's too

big. I can't get through, the fire's massive."

At this point, both officers redoubled their efforts. They got into the car again and managed to drag the casualty to safety. As they performed CPR on him, the car exploded.

The entire incident was investigated by the Independent Office for Police Conduct (IOPC), which concluded that both PCs had acted with nothing but professionalism, and thanked both officers for their bravery.

Chief Constable Alex Franklin-Smith requested a personal meeting with both officers so he could present them with a Chief's Commendation.

He said: "This was an act of bravery of the highest degree.

"Less than a minute after PC Dabrowski and PC Strange dragged the casualty out of that car, it exploded. Though they knew this was likely to happen, they certainly had no way of knowing when it would happen - and so every second they remained in that car is an act of bravery without equal.

"PC Dabrowski and PC Strange exemplify all that's good in policing, and I hope they both take pride in what they did for the rest of their lives."

Simon Payne, chair of the Warwickshire Police Federation, added: "I know you both would have been scared, but you refused to give up and in all these years of helping with nominations, I can say it's one of the bravest things I've ever witnessed.

"Once the IOPC showed the family the body worn-footage, they met you both and hugged you."

Both PCs have been nominated for the National Police Bravery Awards 2025, the winners of which were announced at a ceremony in London yesterday (Thursday July 10), after The Observer went to press. Visit [www.rugbyobserver.co.uk](http://www.rugbyobserver.co.uk) for updates.

**WORCESTERSHIRE MEDAL SERVICE LTD**

BY APPOINTMENT TO HIS MAJESTY KING CHARLES III  
MEDALLISTS  
WORCESTERSHIRE MEDAL SERVICE LTD  
BROMSGROVE

**We Buy**

- Medals
- Coins
- Jewellery
- Gold and Silver

**WORCESTERSHIRE MEDAL SERVICE**

Experts available Monday to Friday.  
Saturday drop off service until 12.00pm.  
Home visits available on request.

01527 835375  
07889757199  
collectors@worcmedals.com  
124 High Street, Bromsgrove, B61 8HJ

EMERGENCY COVENANT  
EMPLOYEE PROTECTION  
JULY  
SILVER AWARD

Instagram Facebook

# Pair guilty of sexual abuse of teen girls



Farhang Taha (left) and Attullah Areen sexually abused two teenage girls after plying them with drink and drugs.

**TWO men who sexually abused two teenage girls in Coventry after plying them with drink and drugs have been jailed.**

Farhang Taha, 26, of Vincent Street, and Attullah Areen, 31, of Scarborough Way, were found guilty at Warwick Crown Court of trafficking for the purposes of sexual exploitation, and will be sentenced at a later date.

The court heard that, from 2016 to 2018, Taha and Areen would pick the girls up in their cars and drive to addresses in Coventry, where they would supply them with

cocaine and alcohol before sexually abusing them.

The girls, who were teenagers at the time, came forward to report the abuse to officers in 2021.

An investigation, titled Operation Bookbinder, was launched shortly after.

Officers investigating found video clips of the abuse on one of the men's phones.

Despite this, both men denied being responsible and tried to claim the girls were lying about the abuse.

The victims, both now adults, gave statements which led to the

two men being found guilty at trial.

A West Midlands Police spokesperson said: "As a force we work hard to ensure that all victims and survivors of sexual abuse, whatever their age, feel able to come forward to tell us about their experiences.

"You will be treated with respect, listened to and taken seriously whilst we carry out a robust investigation to ensure perpetrators are brought to justice.

"We are committed to an approach where children are seen as children and safeguarding is always prioritised.

"No matter how long ago the offences took place, our officers will always investigate any reports they receive."

Visit [tinyurl.com/mv8tnshb](http://tinyurl.com/mv8tnshb) for information on how to report rape, sexual assault or other sexual offences.

## Paedophile caused 'lifelong suffering to victim and family'



Justin McGarry.

A PAEDOPHILE from Warwick has been jailed for sexually abusing a child.

Justin McGarry, of Emscote Road, was sentenced to nine years in prison after being found guilty of eight counts of sexual abuse of a child under 13 years of age.

The 35-year-old will also be on the Sex Offenders Register indefinitely when he appeared at Warwick Crown Court.

In 2020, Warwickshire Police received a report of sexual offences against a child in the Leamington area over a five-year period. Following an inves-

tigation McGarry was arrested and subsequently charged.

Det Sergeant Stephen Barr, from Warwickshire Police, said: "Justin McGarry caused suffering to the victim and their family which is lifelong, and it is because of their courage to come forward

that we have been able to see him brought to justice.

"We are grateful to everyone who worked to support us from the point of receiving the initial report through to the day of sentencing.

"I hope this conviction demonstrates that

Warwickshire Police are determined to bring offenders to justice, serving and protecting our communities with compassion and a victim focus. To anyone who has suffered sexual abuse, please do not suffer in silence and do not be afraid to tell someone."



**PHOENIX COACHES**

	Adult	Child
<b>July</b>		
19th Southend-on-Sea .....	£29.50	£24.50
29th Bury Market .....	£27.00	£22.00
31st Weston-super-mare .....	£27.00	£22.00
<b>August</b>		
2nd Blackpool .....	£29.50	£24.50
5th Chester .....	£27.00	£22.00
14th Camden Market .....	£29.00	£24.00
16th Great Yarmouth .....	£29.50	£24.50
19th Cotswolds Market & Broadway .....	£27.00	£22.00
21st Blist Hill .....	£41.00	£29.00
27th Sandringham House .....	£50.00	£45.00
30th Skegness .....	£27.50	£22.00
<b>September</b>		
2nd Pub Lunch .....	£30.00	£24.00
6th Cheshire Oaks .....	£27.50	£22.50
9th Lincoln .....	£27.00	£22.00
20th Llandudno .....	£29.50	£24.50
23rd Tewkesbury .....	£25.00	£20.00

**Scarborough - The Boston Hotel 28th July-1st August 2025**  
 5 Days/4 Nights £375 Per Person  
 Price Includes All coach travel, 4 Nights accommodation, evening meal & Breakfast, Day excursions, Steam train & Cream Tea

**Paignton - Queens Hotel 8th-11th August 2025**  
 4 Days/3 Nights £325 Per Person  
 Price Includes All coach travel, 4 Nights accommodation, evening meal & Breakfast, Day excursions, Boat trip around Dartmouth & Visit to Brixham, Bicton park Botanical Gardens & Cream Tea

**Normandy- Ibis Styles Ouistreham 15th-19th August 2025**  
 5 Days/4 Nights £496 Per Person  
 Price Includes All coach travel, 4 Nights accommodation, breakfast, entrance to Normandy Museums, English & American Cemeteries, 1 evening meal in a Restaurant

[www.phoenixcoaches.org.uk](http://www.phoenixcoaches.org.uk)  
 Tel No 02476 350 811. 50 Southfield Close, Nuneaton. CV10 OBE



**Solihull Cladding & Roofing Ltd**  
 A local team you can trust

**SPECIALISTS IN ALL ASPECTS OF ROOFING**

New Roofs - Roof Repairs - Flat Roofing  
 Fascia, Soffits & Guttering - Cladding  
 Moss Removal  
 Chimney / Ridge Tile Repointing

Local References Available - Free Quotations

**For a FREE Quote, contact the local company you can trust**

**Solihull: 0121 392 3102**

Radcliffe House, Blenheim Court, Warwick Road, Solihull, B91 2AA

[www.solihullcladdingandroofingltd.co.uk](http://www.solihullcladdingandroofingltd.co.uk)  
[sales@solihullcladdingandroofingltd.co.uk](mailto:sales@solihullcladdingandroofingltd.co.uk)

PUBLIC NOTICES



For all your latest information on  
 Planning Proposals, Traffic Notices,  
 Goods Vehicle Operator Licences,  
 Licences To Sell Alcohol and Probate Notices...

See page **30**



# 'Mario' line pair jailed

THREE drug dealers have been jailed after supplying cocaine to Rugby through what they called the 'Mario' line.

Erlin Murataj, 26, from Rugby, has been jailed for three years and two months for possession of cocaine and cannabis with intent to supply.

Klevjan Beraj, 26, from Derby, was jailed for five years for possession of cocaine and cannabis with intent to supply, and being concerned in the supply of cocaine.

A third man, from Rugby, was jailed for nine months for possession of cannabis with intent to supply.

A Warwickshire Police spokesperson said: "We first found out about the 'Mario' line when we arrested someone for an unrelated offence.

"When accessing the arrested person's phone, we found they'd been buying cocaine in text messages - and we turned those scraps of information into a robust case.

"With all the evidence we'd gathered, the courts granted us a warrant to raid a prop-



Klevjan Beraj.



Erlin Murataj.

erty in Rugby - and in June we did just that, making four arrests and seizing £60,000 of drugs."

Det Cons Thomas Mills said: "Using telecommunications analysis and other expert skills, we discovered that Klevjan Beraj was found to control and manage the 'Mario' line, and that Erlin Murataj and a third man were assisting.

"This is another serious disruption which only adds onto recent successes in the ongoing fight against drugs in Warwickshire.

"Ultimately, these are toxic substances that destroy lives and wreck communities. If you're involved in their sale, we'll be at your door soon enough."



**DRIVER ARRESTED** : A MOTORIST was arrested on suspicion of driving while at more than twice the legal alcohol limit after her car ended up in a ditch near Rugby.

On Monday (July 7), Rugby patrol officers, officers from Warwickshire Police's Operational Patrol Unit, and members of Warwickshire Fire and Rescue Service responded to a report of a single vehicle collision in the Birdingbury area.

They found the pictured car almost vertical in a ditch. There were no injuries or damage to any street furniture.

The driver of the vehicle, a woman from Sutton Coldfield, was arrested on suspicion of driving a motor vehicle whilst over the prescribed limit of alcohol after her roadside breathalyser test read positive.

In custody, the woman provided another breath sample which showed she was at more than twice the legal drink drive limit.

She was charged with driving a motor vehicle whilst over the prescribed limit of alcohol, and will appear in court on Friday July 25.

# Controversial flag did not have permission to fly from Shire Hall

by Philippa Mings

**THE PROGRESS Pride flag at the centre of a dispute at Warwickshire County Council (WCC) did not have permission to be flown, it has emerged.**

The flag sparked a row between WCC's new teenage interim leader Coun George Finch and the authority's chief executive Monica Fogarty, with Reform UK party leader Nigel Farage also wading into the row.

Ms Fogarty refused to remove the flag flying at WCC's Shire Hall headquarters in Warwick before the end of Pride month following a written request from 18-year-old Coun Finch. He ordered it to be taken down in line with Reform UK's policy of only flying British flags.

But Ms Fogarty said that throughout and before her tenure in the job the flags had always been flown at Shire Hall during Pride month.

She claimed she had already made an agreement with previous leader Coun Rob Howard, before he resigned, that both the St George's flag and the Pride flag would be flown.

Warwick District Council (WDC) has since revealed that consent was required to fly the Progress flag and, while an application was not submitted, neither had it received an official complaint.

WDC explained that, unlike the Rainbow flag, advertising consent was required to fly the Progress Pride flag.

Reform UK's head of government efficiency, Zia Yusuf, previously accused



It has emerged Warwickshire County Council did not have permission to fly the Progress Pride flag.



Coun George Finch

the chief executive of a "coup d'etat".

Mr Farage, the party's leader, took to X and suggested Ms Fogarty believed she "knew better than the

people" and she "should look for a new job".

The Progress flag differs from the Rainbow flag as a result of adaptations over the years. It includes colours such as black, brown, pink, pale blue and white stripes, to represent marginalised people of colour in the LGBTQ+ community, as well as the trans community and those living with HIV/AIDS.

Coun Finch is the youngest council leader in the UK. He took over from Coun Howard, who quit his post with immediate effect just five weeks after the party's success in the May local elections meant it formed a minority administration in Warwickshire for the first time.

The Progress Flag has since been removed from Shire Hall following the end of Pride Month.

WCC has been approached for comment.

News and sport online: [www.rugbyobserver.co.uk](http://www.rugbyobserver.co.uk)

Open every weekend plus Wednesdays during

## SUMMER SCHOOL HOLIDAYS



**TRANSPORT MUSEUM WYTHALL**



Registered charity 1167872

**Don't forget Bank Holiday Sunday and Monday. Visiting Buses and Enthusiast Sales Stands**

Adults £12.00  
Child (5-16 yrs) £6.00  
Family £20.00 (1 Adult + 2 Children)  
Family £30.00 (2 Adults + 2 Children)

**A great day out for just £8.00 adult £4.00 children (over 5)**

Open 10.30am to 4.30pm



**Free open top bus rides**

**Bouncy Castle**

**Miniature train rides**



**Picnic and Play Areas**

**Cafe, Burger Van and Shop**



Transport Museum Wythall, Chapel Lane, Wythall B47 6JA

★ We're just off M42 Junction 3, near to Becketts Farm ★

Website: [www.wythall.org.uk](http://www.wythall.org.uk) Email: [enquiries@wythall.org.uk](mailto:enquiries@wythall.org.uk)



Knitted scenes from Alice's Adventures in Wonderland will appear in shop windows and public spaces.

**CURIOUSER AND CURIOUSER:** A COMMUNITY of crafters aim to spread joy around Rugby by 'yarn-bombing' the town in celebration of a literary classic.

Rugby Yarn Bombers are preparing to launch their first extravaganza of displays by celebrating the 160th anniversary of Alice's Adventures in Wonderland.

For four weeks, over 30 knitted scenes from the Alice stories will appear in shop windows and public spaces, inspired by the world created by former Rugby School pupil Lewis Carroll.

Nearly 100 bollards will be decorated with handmade roses, 40 giant playing cards will be scattered around the town, over 50 trees will wear colourful coats, and curious characters will peek out from unex-

pected places.

Ceri Line, the event's lead organiser, said: "It's about joy, really - joy in making, joy in community, and joy in turning heads when someone rounds a corner and sees a nonsense sign or colourful character."

"It's more than a spectacle; it's a statement. It's proof that a community, given encouragement and just enough nonsense, can stitch together something quite extraordinary."

Preview exhibits will be on display at Art at the Alex in James Street as part of the Warwickshire Open Studios Summer Art Weeks.

The Wonderland displays will take to the streets from July 12 to August 9. Trail maps will be available from Wild and Free in Bank Street.

# Championing the case for organics

A GREEN-FINGERED grandmother from Rugby who transformed the grounds of her local church hall into a community vegetable plot has now become a Community Champion in a bid to green up her neighbourhood.

Hillmorton resident Jill Dwyer has joined the Rugby Community Champion scheme, run by Garden Organic and Rugby Borough Council, which offers training and advice to residents about sustainable gardening, including how to grow food, compost, and prevent waste.

As well as running the Hillmorton Community Garden at Rogers Hall - where volunteers are growing herbs, beans, tomatoes and flowers organically - Jill now passes on her knowledge at coffee mornings, and organises seed and plant swaps.

Jill, who has been growing her own vegetables for 25 years, said: "I've never liked using harsh chemicals, and organic methods of gardening have always seemed so much healthier, simpler, and money saving than buying in a bottle of toxic spray."

"At the community garden we practice things like companion planting, mulching and crop rotation - and they're not hard, but they do wonders to minimise pests naturally and

improve the soil.

"I love to learn, so I jumped at the possibility of free training from Garden Organic. Being part of the project has helped us get more volunteers - and link up with other networks."



"It's a massive highlight for me that, after people see what we do, they want to get involved. I think we all have a role to play as individuals to help the environment and pass on skills. Becoming a champion was a golden opportunity for me to make a contribution."

The Community Champion project runs family fun days, children's activities and workshops such as growing potatoes in containers - with more events being planned.

Garden Organic's CEO Fiona Taylor said: "Our volunteers are central to showing people how to get started in helping nature to recover. Their enthusiasm is infectious, and they take part in training people up in gardening and composting skills in ways that are accessible to their communities."

"Partnership working is the best way to reach our local communities and, as a local organisation, we're delighted to be doing so with Rugby Borough Council."

Coun Maggie O'Rourke, Rugby Borough Council's spokesperson for partnerships and wellbeing, said: "Whether a home garden, allotment, community space or school garden, the Community Champions aim to inspire a new generation to garden sustainably and support biodiversity in the borough."

The Community Champions will be hosting a community sow-and-grow event at Rugby Library on July 22. Visit <https://tinyurl.com/y92w5tkc> for more information.

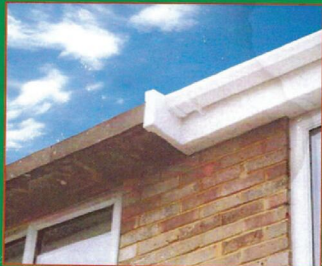
Visit [www.gardenorganic.org.uk/rugby-community-champions](http://www.gardenorganic.org.uk/rugby-community-champions) or email [rugby@gardenorganic.org.uk](mailto:rugby@gardenorganic.org.uk) for more information on the Rugby Community Champion scheme.

**Jill Dwyer organically grows herbs, beans, tomatoes and flowers at the Hillmorton Community Garden.**

## RUTILUS

Concrete Gutter Replacements Ltd

We are proud to be an approved Which Trusted Trader . . .



- Specialists in concrete gutter removal.
- Over 10 years experience.
- Free quotations.
- Family run business.
- Payment terms available.

Call today for a free Quote  
 07538 554948 (Helen) • 07837 255168 (Alan)  
 Tel: 01527 454075  
 or email: [sales@rutilusgr.co.uk](mailto:sales@rutilusgr.co.uk)  
[www.rutilusgr.co.uk](http://www.rutilusgr.co.uk)

We are proud to be an approved



Are these the problems that you suffer with?



How Rutilus can help



We visit your property, survey any damp damage, and perform a Health and Safety check.

We measure and discuss your new guttering system.

We leave you with a hassle free, no obligation, quotation valid for 6 months.



"after the neighbour saw the transformation - he booked to have his done"

Call today for a free Quote  
 07538 554948 (Helen) • 07837 255168 (Alan)  
 Tel: 01527 454075  
 or email: [sales@rutilusgr.co.uk](mailto:sales@rutilusgr.co.uk)  
[www.rutilusgr.co.uk](http://www.rutilusgr.co.uk)



**RUTILUS**  
 Concrete Gutter Replacements Ltd



# MP welcomes plan for more driving tests

**DRIVING test waits could soon be shorter.**

MP Matt Western has welcomed the Government's announcement that additional driving tests will be provided after reports people were forced to wait almost six months to book tests at Warwick's Wedgenock House test centre.

Wait times at the centre are currently 24 weeks which the Warwick and Leamington MP says is "holding back a large number of learners from taking their test and accessing the freedom and opportunities so many of us know comes with being able to drive".

New measures, announced by the transport secretary Heidi Alexander aim to deliver at least 10,000 extra tests a month and the doubling of training to increase availability of driving examiners.

Other measures announced include a swift investigation of the potential abuse of the driving test booking system which has been making national headlines.



**Matt Western is hoping to see waiting times for driving tests dramatically reduced.**

These have included bots block-booking test places which have then been sold on at inflated prices to learners keen to take a test as soon as possible.

The use of bots are a particular concern to Mr Western.

He said: "They are profiteering off people who simply want to pass their driving

test and access the freedom that comes with that".

"These measures are a step in the right direction to ensure learners across the country get the opportunity to take their driving test and not be sat waiting for months while bots continue to buy up tests that people are so desperate for."

## Summer Gardening at the garden lovers' garden centre



[www.farnboroughgardencentre.co.uk](http://www.farnboroughgardencentre.co.uk)

A traditional garden centre that focuses on providing quality plants, garden products, homeware and gifts



PLANTED BASKETS

PATIO PLANTS

WATER FEATURES

AQUATIC PLANTS



AT FARNBOROUGH GARDEN CENTRE  
Come & visit our Treasured Teddies shop & see our massive selection of cuddly collectables & furry friends including especially loveable limited editions and everyday huggables

A world of Choice

OPEN 6 DAYS A WEEK  
Tues-Sat 9-5:30pm  
Sun 10:30-4:30pm  
Open Bank Holiday Mondays

On A423 Southam Road, Nr Farnborough Banbury, OX17 1EL  
Tel 01295 690479  
[customersales@farnboroughgardencentre.co.uk](mailto:customersales@farnboroughgardencentre.co.uk)



WHERE THINGS FOR YOUR GARDEN WON'T COST YOU THE EARTH

LIMITED OFFER!!  
£45 FOR BOTH EARS!

## EAR WAX REMOVAL SPECIALIST



Are you tired of muffled sounds or discomfort caused by ear wax buildup? Our professional ear wax removal services provide a fast, safe, and effective solution.

- Improved Hearing
- Expert Care
- Safe for All Ages
- Home Services Available

Call Number: 07500070044



# Hospices planning to connect to business

**CONNECTIONS** are more important than ever at **The Myton Hospices**.

It has launched a new initiative, My Connections, to encourage introductions between local businesses and the charity.

The aim is to build new relationships that help them to continue providing expert and compassionate care to people and their families living with life-limiting illnesses across Coventry and Warwickshire.

My Connections invites people to consider whether they know someone – a friend, family member or colleague – who works for a business in the local area. A simple introduction could lead to valuable support for the organisation, whether

by **Philippa Mingins**

er through a partnership, fundraising, donations, or offering time, skills and professional expertise.

Chris Willmott, partnerships manager at The Myton Hospices, said: "Every connection matters. Whether it's a one-off donation, choosing Myton as a Charity of the Year, or giving time and skills, support in any form can have a profound impact. You can help us be there for more people and their loved ones when they need us most."

To find out more or to make an introduction, email the Myton team at [myconnections@mytonhospice.org](mailto:myconnections@mytonhospice.org)

The Myton Hospices is a charity, not the NHS, and they need to raise £12.7 million of the £15.3 million it costs this year to continue providing their services free of charge.

**FUNDRAISERS** have a last chance to sign up for The Myton Hospices' annual cycle challenge.

It will take place on Sunday August 3 and participants can choose from the 50km, 100km, or 100-mile distances.

All routes begin and end at Warwick Myton Hospice and a barbecue, drinks and entertainment will be waiting at the finish line.

This year, Myton is aiming to raise £55,000 from this event, which could cover the running costs of



The Myton Hospices has launched a My Connections initiative.

Warwick Myton Hospice for 11 days. The funds raised will enable the hospice to continue providing essential palliative and end of life

care to people living with life-limiting illnesses, and their families.

Visit [www.mytonhospice.org/Cycle](http://www.mytonhospice.org/Cycle) to sign up.

## Firefighters get ready to join in community events across county

**FIREFIGHTERS** will host a series of open days and community events across Warwickshire this summer.

Warwickshire Fire and Rescue Service has announced a range of events at which residents can meet their local firefighters, learn about fire safety, and enjoy a day of fun-filled activities for all ages.

Coun Dale Bridgewater, Warwickshire County Council's spokesperson for fire and res-

cue and community safety, said: "These summer events are a fantastic way for our communities to connect with Warwickshire Fire and Rescue Service. They offer a unique opportunity to meet the teams from the service, learn about fire safety and enjoy a day of fun for the whole family."

### Upcoming Events

Saturday (July 12), 10am-2pm - Football tournament and family fun day, Home Guard Club, Main Street, Tiddington. Football tour-

namment, refreshments, bouncy castle

July 19, 9am-3pm - Ladies Day, The Piston Club, Stratford-upon-Avon. A day dedicated to road safety and wellbeing, with support from the Biker Down partnership. For more information, visit [fb.me/e/3kH5X8Bry](https://fb.me/e/3kH5X8Bry)

July 19, 11am-3pm - WFRS colour run, Rugby Free Secondary School. Complete the one mile run at your own pace. Refreshments, stalls, and family

activities. Entry adults £5/children £3.50. Visit [www.peoples-fundraising.com/event/colour-run-copy](http://www.peoples-fundraising.com/event/colour-run-copy) for more.

August 2, 10am-4pm - Southam Fire Station Open Day. Fire safety advice, safe and well checks, and more. See [fb.me/e/5JhV0o8V7](https://fb.me/e/5JhV0o8V7) for details

August 12, 10am-6pm - Uniformed Services event, Nuneaton. Safety advice and demonstrations. For more details, visit [nuneatonbid.co.uk/event/%F0%9F%9A%93-uniformed-services-day/](http://nuneatonbid.co.uk/event/%F0%9F%9A%93-uniformed-services-day/)

co.uk/event/%F0%9F%9A%93-uniformed-services-day/

August 16, 11am-6pm - Warwickshire Pride, Pump Room Gardens, Leamington. Fire safety advice and community engagement

August 23, noon-5pm - Stratford Fire Station Open Day. Bouncy castle, face painting and more. See [fb.me/e/6mFSzpdhG](https://fb.me/e/6mFSzpdhG) for details

August 24, noon-5pm - Nuneaton Carnival. [www.nuneatoncommunitycarnival.com/](http://www.nuneatoncommunitycarnival.com/)

## INTERNATIONAL METALS & CABLE RECYCLING LTD

**We purchase all Ferrous and Non Ferrous Metal Batteries and Cables**

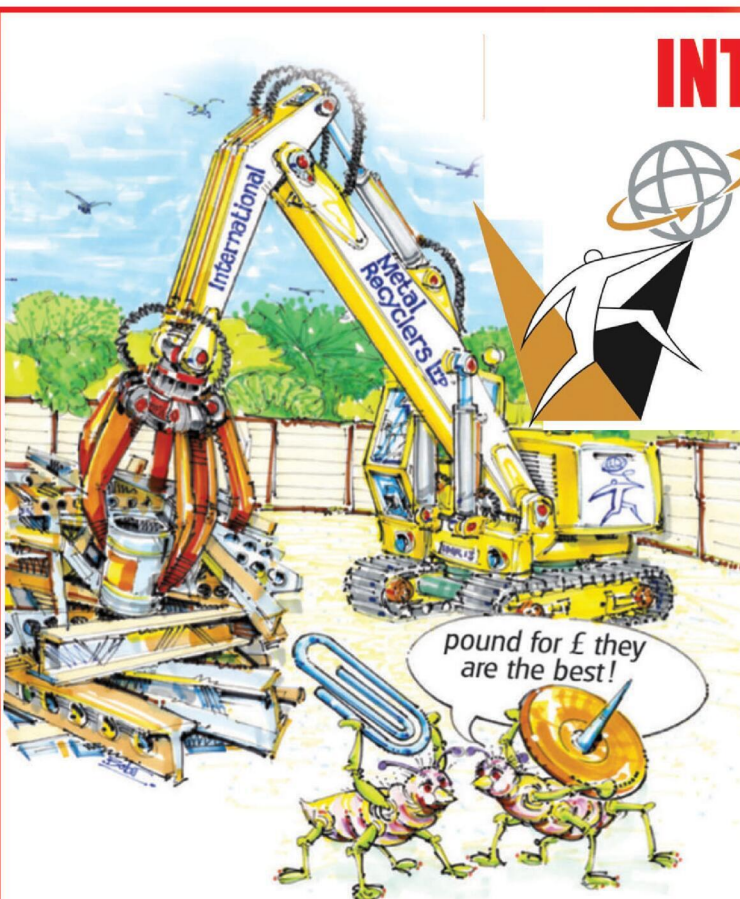
**Collection Service Available**

**Long Marston Road, Long Marston, Stratford Upon Avon, Warwickshire, CV37 8AQ**

**01789 721 288**

**david@imrltd.co.uk**

**Open Mon/Fri - 8am - 5pm**



# Off-pitch efforts land keeper award

COVENTRY City goalkeeper Ben Wilson has received a special community award from the Professional Footballers' Association (PFA).

The PFA and Sky Blues in the Community have awarded Wilson the club's PFA player in the community award.

The special award recognises Wilson's work off the pitch and community contribution.

Head of Sky Blues in the

Community, David Busst, presented Wilson with the award.

One player from each Football League club receives the special award.

Wilson said: "I am honoured to have been chosen as Coventry City's community player of the season."

"I feel very grateful to have been considered as it means a lot to me that I am able to give back to the community."

"Putting smiles on the faces of hundreds of people I have managed

to spend time with in our local community over the last year, of different ages and backgrounds, is an amazing feeling.

"One of the best bits about these community appearances is that it allows me to help bring people together and inspire them to strive for success in their everyday life."

"I thank you all for not only accepting me, but allowing me to be myself and smile along with you as we take part in these activities together."

"A lot of this is alongside Sky Blues in the Community too, and I have seen first hand the impact their projects have on people."

"I really appreciate being recognised in this way."

Wilson has been nominated as a player ambassador for Sky Blues in the Community for the last few years.

He also attended one of the club's disability sessions, covering young people with SEN/behavioural needs, as part of Sky Blues in the Community's inclusion programme.

Wilson recently became the club's player ambassador for Coventry's Disabled Supporters Association (DSA).

Coventry City goalkeeper Ben Wilson (right) receives his award from David Busst (left). Picture courtesy of Coventry City FC.



Stuart Bale, project director at The Hill Group, Kelly Grealis, senior manager at Homes England, West Midlands Mayor, Richard Parker and Coun Jim O'Boyle from Coventry City Council. s

**FIRST PHASE: DEMOLITION** has begun on Coventry's landmark City Centre South regeneration project, with new homes expected to be completed in late 2027.

The first phase of works in the \$450million scheme includes the demolition of the former Argos building in City Arcade and the Barracks multi-storey car park.

The project marks a significant milestone in Coventry's most ambitious city centre redevelopment in decades.

The \$450million scheme is being delivered by housebuilder The Hill Group, in partnership with Shearer Property Group (SPG) and is set to transform outdated and underused post-war buildings into a modern, sustainable city quarter.

Once complete, City Centre South will provide up to 1,575 new homes - a mix of studio to three-bedroom apartments.

The first phase will deliver 991 of

these homes, along with 8,000sq ft of commercial space and 17,000sq m of public space.

Andy Hill, chief executive of The Hill Group, said: "This is a unique opportunity to create a new heart for Coventry that combines high-quality homes, public spaces, and long-term value for the local community."

Coun Jim O'Boyle, Coventry City Council's cabinet member for jobs, regeneration and climate change, said: "City Centre South will completely transform this part of the city and attract people to live, work, and spend their time here."

Richard Parker, Mayor of the West Midlands, added: "This scheme is exactly the kind of bold, community-first development we need across our region."

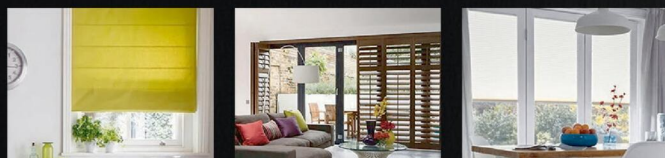
Visit [www.coventrycitycentresouth.co.uk/](http://www.coventrycitycentresouth.co.uk/) for further information.



VERTICAL

ROLLER

VENETIAN



ROMAN

SHUTTER

INTU

**10 YEARS WARRANTY ON SHUTTER BLINDS**



Available in beautiful and stylish Hard Wood and Faux Wood

**WE WILL BEAT ANY LIKE-FOR-LIKE QUOTE**

Visit us at: 21 Brixham Drive, Coventry, CV2 3LA

Email: [info@brixham-blinds.co.uk](mailto:info@brixham-blinds.co.uk)

Contact us today for a **FREE** no-obligation quotation

**T: 02476 666686** [brixham-blinds.co.uk](http://brixham-blinds.co.uk)

# BRIXHAM

# BLINDS

## Residential and Commercial

Brixham blinds are a well-established blinds company offering to trade and consumer. With a great range of quality bespoke and made to measure blinds by an established blind company you can trust.

Whether you're thinking of vertical blinds, roller blinds, venetian blinds or roman blinds, shutter blinds, all of our blinds come with child safety regulations and fittings to make sure your home is safe.

# Free service to pick up your unwanted items

by **Andy Morris**  
andy.morris  
@bullivantmedia.com

**A FREE service which collects unwanted household items is now available in Rugby.**

Rugby Borough Council (RBC) has teamed up with Anglo Doorstep Collections to provide the service.

Residents can book a collection online and have their unwanted household items picked up on a date that best suits them.

Anglo will collect and sort the items, with 95 per cent being reused or rehomed and five per cent recycled.

Items which can be collected include clothes, books, small electrical items, and shoes which are in good, reusable condition.

As much as 60 per cent of the proceeds of resold items are donated to charities of their original owners' choosing.

Coun Alison Livesey, RBC's spokesperson for operations



**Unwanted clothes and more can be rehomed or recycled via the new service.**

and traded services, said: "The service offers free and convenient collections for residents' unwanted household goods, allowing them to be reused, helping others benefit from them, reducing overall waste, and supporting charities of the residents' choice.

"By recycling these goods

that cannot go in the blue bins, we can make a significant impact on improving our recycling rates, reducing landfill and helping to mitigate climate change."

Her Liberal Democrat counterpart Coun Sam Edwards added: "This partnership is a positive step to reduce fly-tipping and landfill waste, as well as providing a bedrock for a greener, more sustainable Rugby and its villages."

Large household items such as fridges, washing machines, or mattresses should be taken to Hunters Lane Recycling Centre, or collected by Rugby Borough Council's bulky waste collection service. Visit [www.rugby.gov.uk/w/bulky-waste-collection-service](http://www.rugby.gov.uk/w/bulky-waste-collection-service) for more information.

Visit <https://anglodoorstepcollections.co.uk/what-we-collect/> to see the full list of items accepted by the new service.

Visit <https://rugby.gov.uk/w/anglo-doorstep-collections> for more information and to book a collection.

## Icing on the cake for centre birthday

A SWEET celebration was the icing on the cake to mark The Percival Guildhouse's centenary in Rugby, with spectacular cakes spelling out '100' as the star attraction.

A birthday tea party was held to thank students and tutors for their support of the adult education centre as it celebrated its 100th birthday.

The cakes, created by cake crafter and baker Vera Queiroz to spell out the number 100, offered guests the choice of three flavours – lemon, strawberry and chocolate, including one gluten free to cater for all tastes.

In thanking all of the 50-plus guests present, chair of trustees Rob Close said their continuing support was vital as the Guildhouse sought to secure its future as the home of lifelong learning in Rugby.

He also thanked centre manager Sarah Gall and her team for organising the event, and Vera for the excellence of her baking and icing skill.



**Guildhouse centre manager Sarah Gall and chair of trustees Rob Close cut into part 'one' of the centenary celebration cake.**



For the life you've built  
and the future you're planning.

*We're here with expert  
legal advice, every  
step of the way*

Your legal expert for all things in life:  
Wills, family, property, disputes, personal injury and more.

Get in touch *today*.

0121 733 8000  
[wilkes.co.uk](http://wilkes.co.uk)



# BARRY STEELE'S ROY ORBISON STORY

★★★★★  
"True, Identikit Brilliance"  
The Stage



SCAN ME

**SATURDAY OCT 4**

**THE ALBANY COVENTRY**

**02476 998964 - ALBANYTHEATRE.CO.UK**

*Featuring iconic hits from Roy Orbison, The Traveling Wilburys, Chris Isaak,  
and so much more - Touring Nationwide  
Visit [barrysteel.com](http://barrysteel.com) for further information*

# First Arts Week puts youngsters in the spotlight

by Lola Griffin

**COVENTRY Schools' first-ever Arts Week celebrated a cultural legacy and youngsters' talents.**

The event aimed to bring young people and children together from schools across Coventry to celebrate creativity, self-expression, and cultural life in the city.

Organisers Coventry City Council and Cultural Education Partnership (CCEP) put on the event to showcase the artistic talents of its youngest residents while also nurturing a passion for arts and culture from an early age.

The Sky Art Bus provided art-related activities and resources for students at West Coventry Academy and the school's art exhibition was launched at the Herbert Art Gallery, offering a glance into childhood artistic development. It will be open throughout the summer holidays.

Seven music groups from



Holy Trinity School and Sixth Form students were delighted with their musical success.

Coventry Music and nine schools came together to perform at Butterworth Hall at Warwick Arts Centre, with a further nine schools performing throughout the day to each other.

Coun Dr Kindy Sandhu, Coventry City Council's Cabinet Member for Education and Skills, said: "I am incredibly proud to see initiatives like Coventry School Arts week taking place in our city."

There was also a city-wide school's performance of 'Lady Godiva's Birthday Suit - The Musical' by Coventry author Aaron Ashmore, which brought together around 750

pupils from schools across the city.

Mr Ashmore said: "To see so many young people bring this story to life with such energy and creativity was incredibly inspiring."

The week also featured a 'Booknic' at War Memorial Park - a free reading picnic which encouraged attendees to relax, eat and chat about books.

Families were also invited to meet next to the playground in the park to take part in a carnival-style parade, author and illustrator events, book trails, a giant book swap, circus skills and more.



Volunteers from the Kier Group have transformed a Coventry P3 Housing site into a more welcoming space.

## Makeover turns housing into homes

WOMEN'S Supported-Housing accommodation in Coventry has received a loving makeover.

A team of 11 volunteers from the Kier Group transformed a Coventry P3 Housing site into a more welcoming space for women who are currently experiencing - or at risk of - homelessness.

The volunteers revamped the accommodation, sanding surfaces, painting walls and doors, adding finishing touches to communal spaces, and painting a feature wall chosen by the residents.

The project directly supports the P3 charity's Intensive Housing

Management Service based in Coventry, which provides vital temporary accommodation for women while aiding them with housing advice, budgeting guidance, benefits support and referrals to external services.

Erin Coburn, director of fundraising, marketing and communications for P3, said: "These aren't just buildings - they're people's homes, and when they feel looked after, the people living there do too."

Andrew Bannister, deputy maintenance manager for P3, said: "The presence of the Kier volunteers has made a huge

impact for not just the people we support at P3, but our team.

"What would've taken three months has only taken a day."

Philip Miles, pre-construction director for Kier Group, said: "We usually work across the country, so it's been great for our team to get together and do something that's non-work related while doing something that's hugely valuable for the community."

P3 supports more than 30,000 people a year through a variety of services.

Visit [www.p3charity.org](http://www.p3charity.org) for more information.

## Canley, your new locally owned vet is opening soon.

From check-ups and microchips to major surgery, we'll be there for your pets.

We believe that locally owned is locally loved, Cristina and Leah are delighted to open their second practice in Canley, alongside their existing Walsgrave practice.

Opening 1<sup>st</sup> August 2025

Inside Pets at Home, Sir Henry Parkes Road, CV5 6BL

Vets for Pets



Register your pet today. Room for plenty more paws. Scan to register.



Come to our  
**OPEN HOUSE EVENT**  
 Saturday 26th July

# Come see

why people love living  
 at Knox Court

Our Open Event is the perfect opportunity to discover what makes our McCarthy Stone retirement community in Rugby so special.

**Join us on:** Saturday 26th July,  
 12 noon - 4pm  
**Friends and family welcome**

Find out more about retirement living, including purchase options. Chat with the welcoming homeowners, explore the beautifully designed properties, and see for yourself why so many say, **"I only wish I'd moved sooner."**

**Call 0800 185 5351**  
 to visit or to book your place at our Open House Event, we'll prepare a warm welcome.  
[mccarthystone.co.uk/knox-court](http://mccarthystone.co.uk/knox-court)

**Bilton Road, Rugby CV22 7BA**  
**Open Tues - Sat, 10.30am - 5pm**



**What you can expect at Knox Court:**

- ▶ Ideal for over 70s
- ▶ On-site bistro^
- ▶ Social communal lounge
- ▶ Estates Team on-site 24/7
- ▶ Tailored domestic support and personal care available should you need it^

**McCarthy Stone**  
 Retirement living *your way*

★ Trustpilot Rated Excellent

\*Subject to availability. ^Additional charges apply.

# Godiva Festival



RIGHT: Heaven 17 drew a big crowd to the Main Stage.

LEFT: The legendary Neville Staple produced a superb performance.

BELOW: Du Blonde added some pop to the bill.



## Thank you for



Pete Chambers, of the Coventry Music Museum, shares his account of this year's Godiva Festival at Coventry's War Memorial Park

**SO here we are, after yet another great Godiva Festival. We had the sunshine, the family fun and of course the great music. Here is how my Godiva shaped up.**

Well, as per normal on a Friday, I got there nice and early while the place was empty. It's great to see it like this, knowing that in a few minutes it will be full of excited music-lovers. Then I spotted an advert for the Coventry

**MUSIC MATTERS!**  
Pete Chambers *BEM* writes for *The Observer*

Music Museum on the big screen - wow!

So once the gates were open, the crowds poured in. I have to say this for me was the best Friday night line-up - not necessary people I would go to see, but stood there right at the front, it made for a wonderful night.

First up was Godiva Calling winner MatthU - wow! A superb new talent from Nuneaton, dressed in a suit you can't remember with a voice you can't forget and an amazing guitar player backing him up.

I was already having a great time when the incredible Heather Small took the stage. What a voice! I forgot just how many hits she has had.

Then came my favourite of the night, Heaven 17 - more great voices and all those inventive songs from the 80s like the irresistible (We don't Need This) Fascist Groove Thang, Temptation and Come Live With Me.

The night ended with the legendary Marc Almond with another fine set of tracks.

On Saturday at the main stage, I enjoyed another two Godiva Calling bands.

The Royals are young but producing some great music. They were followed by metal band Chaplain, with lots of face make-up and heavy as they come. The

# OFTEN IMITATED BUT NEVER EQUALLED

## While all costs are going up - OURS ARE STAYING DOWN

Due to our customer friendly services of No Door Salesmen, No Showroom and little overheads

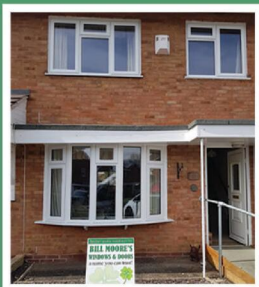


**NEW FLUSH WINDOWS**

**BEAUTIFUL COMPOSITE DOORS**  
Fully fitted  
**Competitive Prices**



## UPTO 30% OFF ALL WINDOWS



**ALL PRODUCTS HAVE A 10 YEAR INSURANCE BACKED WARRANTY**

# BILL MOORE'S WINDOWS AND DOORS

A NAME YOU CAN TRUST

1 Brookside Close, Stratford-upon-Avon, Warwickshire CV37 9PL

01789 415171 • 07729 689239 • [www.billmooreswindowsanddoors.co.uk](http://www.billmooreswindowsanddoors.co.uk)

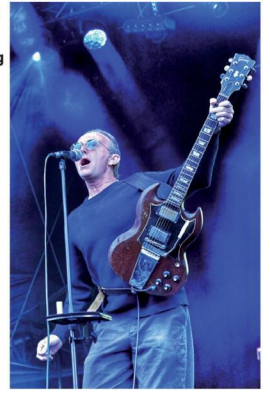
# Godiva Festival



FAR LEFT: Lynval Golding performing with Too Much Too Young.

LEFT: Rick Parfitt Jr.

RIGHT: Ocean Colour Scene guitarist Steve Cradock.



## the music

crowd took it all in and loved it, and so did I.

I only caught some of Du Blonde's set. I was expecting bags of energy and acid vocals as seen on her videos, but she seemed very calm with both feet in the world of pop – still good though, as was my mate, rapper Whizzy.

Then it was the homecoming of the legend Neville Staple and his band. He has not been well of late, but despite this he was remarkably agile and gave a superb performance in the Godiva sunshine, with thousands of Ska crazed backing singers.

Then, over at the Cov Stage, we had Danny Ansell Band. He never lets us down, and tonight was no exception. On to The Session – everyone knows by now how much I love this band.

Then it was time to close with more 2-Tone with Too Much Too Young.

I was excited because I was aware that Lynval Golding from The Specials would make an appearance. Backstage, he told me he loved this band and their fine musicality. He came on and finished the night perfectly.

Sunday started late with the rain. I caught Rick Parfitt Jr and his band, who lit up the crowd with his superb cover versions and really brought the festival fun. I also loved the Phase One Steel band.

Finally, the mighty Ocean Colour Scene, who closed the festival with their mighty blue-eyed soul and a guest appearance from Lynval Golding. Another great Godiva. See you in 2026.



Pete Chambers is delighted with the big-screen advert for his Coventry Music Museum.



Walking tall.



**OUR BIG SALE IS STILL ON**

**INFLATION EVERYWHERE - BUT NOT AT CARPET MILL!**

Everything is going up in price, the same for Carpets and this is why it pays to go to Carpet Mill. Manufacturers of yarn and other materials for making carpets have all had price rises and some manufacturers are busy changing their specifications to many ranges to compensate. They also get surplus rolls that they cannot sell to the big stores as they don't have enough stock left to service them.

**Therefore, we are buying those rolls at a FAT DISCOUNT and passing it on to YOU.**





Everything Reduced  
BE QUICK

**BRAND NAME CARPETS AT LOW LOW PRICES**

**From quality Axminster to budget cord**

We are recommended for our low prices, quality service and extensive range throughout the Midlands. There are no R.R. prices on carpets, so if others give 50% offers or sales discounts, is it 50% off their normal high prices. ALWAYS compare with Carpet Mills normal prices!!!!!!

# CARPET MILL

CROMWELL STREET (OFF RED LANE) COVENTRY CV6 5EY TEL: (024) 7666 1985

SOME CUSTOMERS TRAVEL MILES - YOU DON'T HAVE TO - WE ARE HERE

[www.salecarpet.uk](http://www.salecarpet.uk)



# Thousands more trees offered in a new scheme

THOUSANDS of free trees are being offered to farmers across Rugby borough under a new scheme.

Rugby Borough Council has joined the Free Trees for Farmers initiative, and will offer up to 14,000 trees to farmers in the area to help with its climate objectives.

The scheme, initiated by Warwickshire Wildlife Trust in 2021, has already planted 75,000 trees in Warwickshire over the past four years, to promote sustainable agriculture.

The scheme offers a selection of native trees, ensuring a variety of blossoming and fruiting times throughout the year that encourage biodiversity and support different pollinators. Farmers can choose from different tree packs, including hedgerow, fruit, and woodland trees, tailored to suit their land.

The project in Rugby will be funded by 30,000 from the council's Climate Reserve, a dedicated pot of funding for climate-focused projects.

Coun Maggie O'Rourke, Rugby Borough

Council's spokesperson for partnerships and wellbeing, said: "This initiative is a great opportunity for farmers to access free trees for their land, promoting biodiversity for the future. Farmers can choose from a variety of tree packs, helping the borough enhance the diversity of its tree population."

Her Liberal Democrat counterpart Coun Neil Sandison added: "Warwickshire and Rugby have lost substantial tree cover over the years. Support from farmers will help this scheme to restore some of our woodland and wildlife habitats by backing the Warwickshire Wildlife Trust's Trees for Farmers initiative.

"Hedgerows are also vitally important as wildlife green corridors, the natural world's super-highways, and they provide excellent flower margins for insects."

Farmers within the local authority's boundaries interested in receiving free trees should apply before the deadline at 11pm on Sunday July 13.

Visit <https://tinyurl.com/39ne6y4s> to apply.



Youngsters will learn essential safe scootering skills.

## Free training on wheels

SCOOTERING to school is set to get safer for Warwickshire youngsters.

Free scooter training is being given in schools by Warwickshire County Council's road safety education team.

The training will be available to schools that are actively engaged with Warwickshire's Safe and Active Schools Programme, as well as through Warwickshire's Holiday Activities and Food (HAF) Programme.

The training, delivered by qualified road safety officers, focuses on developing essential skills for safe scooting including using safety gear correctly, mastering balance, pushing and turning techniques, practising controlled stopping at different speeds, navigating around obstacles, learning one-handed signalling, and understanding basic road safety rules.

The initiative encourages children and families to consider active travel options, such as scooters, for short journeys, including the school run.

A WCC spokesman said: "Promoting safe and active travel for our children is a key priority, and this program directly supports that goal by empowering young people with the skills and confidence to scoot safely."

Contact the Warwickshire road safety education team at [roadsafetyeducation@warwickshire.gov.uk](mailto:roadsafetyeducation@warwickshire.gov.uk) for more details.



### Bank Holiday Afternoon Tea

Celebrate the Bank Holiday in true English style with a delectable afternoon tea served in our elegant spaces or picturesque gardens.

1.30pm – 4.00pm  
Monday, 25th August | £39.50 per person

### Acoustic Afternoons with Barton Hollow

Immerse yourself in the magic of live music as these talented musicians bring warmth and harmony to the afternoon...

2:45pm – 5:00pm  
July - September (Selected Sundays)

### A Taste of the Season

AN EXCLUSIVE DINING EXPERIENCE

An elegant evening of Champagne, canapés, and a four-course tasting menu by Executive Head Chef Stu Deeley, paired with fine wines, celebrating the best of late summer's produce.

Starting at 6.00pm  
Thursday, 11th September | £159.00 per person



Harbury Lane, Leamington Spa, CV33 9QB | [INFO@MALLORY.CO.UK](mailto:INFO@MALLORY.CO.UK) | T: 01926 330214

**THE BED FACTORY**

**SPECIALISTS IN BEDS AND MATTRESSES FOR PEOPLE WITH BACK, SHOULDER OR HIP PAIN.**

**SALE NOW ON**

**The Harrison Handmade Beds**



Complete Range of Harrison FR **Chemical Free** Beds on Show

**Special Price Ottoman**



Single £449 • Double £499  
King £599 • Super King £699

**Sutton Wooden Frame Hand Made Frame**



Single £339 • Double £419  
King £469 • Super King £589

**1 WEEK DELIVERY ON ELECTRIC BEDS**



We are specialists in electric adjustable beds and have A Large Selection Available Starting From £999

**Avon Fire Side Chair**



£669.00

**Special Edition 2 Drawer Bed Set**



3'0 was £449 now £389  
4'6 Was £599 now £499  
5'0 was £699 now £599

**Bedroom Furniture**



Full Range of Bedroom Furniture Available

**Celebrity studio in store**



**Mammoth Ultimate Health Mattress**  
5'0 Pure Mattress or 2000 Limited Stocks  
Reduced from **£2139**  
TO JUST **£1599**

Helps reduce back, shoulder and hip pain

Mattresses	Support Chairs	Beds	Sofas
Riser Recliners	Electric Adjustable Beds	Corner Sofas	Headboards
Chests	Wardrobes	Pictures	Mattress Toppers
Lamps	Pillows	Duvets	Z Beds

**Leamington's Largest Independent Bed Retailer**

**We can supply a large range of beds in 1 to 2 weeks - 3' Single Beds also available - WE SUPPLY WHEN OTHERS FAIL**

139 Regent Street, Royal Leamington Spa, CV32 4NX

**01926 422404**

sales@thebedfactory.co.uk  
and www.thebedfactory.co.uk

**Trustpilot** ★★★★★

# Shining spotlight on frontline staff

WEST Midlands Ambulance Service is shining a spotlight on the dedicated, collaborative and compassionate natures of its frontline staff as part of International Paramedics Day on Tuesday.

The event, celebrated across the globe, provides an opportunity to thank the paramedics for their admirable service and to acknowledge the emotional resilience and mental endurance it takes to care for people in every imaginable situation.

West Midlands Ambulance Service (WMAS) Chief Executive Officer, Anthony Marsh, said: "Today is a moment to reflect and say thank you for the life-saving efforts made by ambulance staff, every single day."

From life-threatening medical emergencies to responding to a serious road crash, delivering a baby at home or providing consolation and compassion in someone's final moments, paramedics stand beside people on the most difficult and challenging days of their life.

Working on the frontline of the health-care service, the day serves as a reminder of the physically and emotionally demanding situations which paramedics dedicate themselves to in order to help others.

To mark the occasion, the WMAS Trust has released a moving video featuring paramedic, Samuel Simpson, who described his own experiences of working in the field and the importance of his job.

He said: "We don't do this for the recognition. We do this because people matter."

Mr Marsh added: "On International Paramedics Day, we recognise the extraordinary individuals who represent the very best of



what our ambulance service stands for. "Our paramedics show courage, care and professionalism in some of the most challenging situations. Their impact is felt by thousands of patients and their families and loved ones every day. I am incredibly proud of each and every one of them."

Visit this story on our website to watch the video. **Samuel Simpson describes his own experiences of working in his role in a video released for International Paramedics Day. Picture by WMAS. s**



Aldi shoppers helped raise £12million for the Teenage Cancer Trust. s

## Checkout this fine total

SUPERMARKET Aldi is thanking its shoppers in the West Midlands for helping it to raise £12million for the Teenage Cancer Trust.

The company started its partnership with the charity in 2027, initially pledging to raise \$15million for the charity by 2017.

But it has now extended its commitments with a new target of \$20million by 2031.

Funds raised through the partnership help the charity continue providing specialist care, vital support services and dedicated centres adapted to the needs of young people and teens undergoing cancer treatment across the country.

Kate Collins, chief executive of the Teenage Cancer Trust, said: "The funds raised have enabled our nurses and youth teams to improve the lives of thousands of young people with cancer and support families during their toughest times."

Aldi staff in the region have completed a

wide range of fundraising activities - from head shaves and cake sales to various endurance challenges, whilst donations have been further boosted by the generosity and kindness of Aldi shoppers across the area.

To mark the accomplished milestones, Aldi, the fourth largest supermarket in the UK, is also making an additional \$12,000 donation to continue to support the charity's work with teenage cancer patients and their families.

Liz Fox, national sustainability director at Aldi UK, said said the supermarket, was incredibly proud of its partnership with the charity, adding this latest milestone reflected the dedication of its staff and the generosity of its customers.

Throughout July, Aldi's Cuthbert cake will additionally feature a text code on its packaging for the Teenage Cancer Trust, giving those customers who want to donate to the charity the chance to do so.

# THE JONES FAMILY JEWELLERS

## WE BUY & SELL GOLD WATCH BATTERIES & STRAPS IN HOUSE JEWELLERY REPAIRS



TJFFJEWELLERS.CO.UK

f @TJFFJEWELLERS



SATCHWELL WALK, ROYAL LEAMINGTON SPA | SATCHWELL COURT, ROYAL PRIORS, ROYAL LEAMINGTON SPA | TALISMAN SQUARE, KENILWORTH CV8 1JB

01926 882552

01926 893393

01926 954271

# RCN BEDS FURNITURE



**SAVE**



**HUGE SELECTION - GREAT PRICES**



**OPEN 6 DAYS – 9AM - 5PM**



**rcn**  
Beds & Furniture

**HENLEY ROAD,  
COVENTRY  
CV2 1AB**

**02476  
603254**



Dr Faustus runs from July 16 to 26. Picture by Richard Smith Photography.

# Views are sought on new homes application

by Philippa Mingins  
 philippa.mingins@bullivantmedia.com

A PUBLIC consultation is asking residents for feedback on proposals on new homes in Southam.

"As well as providing much needed new homes, including affordable housing for local people, and a range of new facilities, our vision is to create a community which enhances the natural environment through significant green spaces and biodiversity improvements.

A planning application is set to be submitted by developer Taylor Wimpey for up to 275 homes on land west of Coventry Road. Up to 35 per cent will be affordable housing, and all homes will be low carbon to support sustainable living.

"We are seeking feedback on what kind of outdoor recreation facilities are needed locally and could be provided by the scheme.

The proposals also include public open spaces, children's play areas and habitats for nature.

"As well as this, we welcome all comments on our emerging proposals, and this consultation gives people the opportunity to influence how this new neighbourhood takes shape."

If the planning application is approved, it is anticipated Taylor Wimpey will make financial contributions to Stratford District Council to support local infrastructure.

Visit [www.twoventryroad.co.uk](http://www.twoventryroad.co.uk) to take part in the consultation before the deadline of August 3.

Taylor Wimpey spokesperson Stephen Swinscoe said: "We are pleased to launch this consultation and invite the community to help shape our plans for this new neighbourhood in Southam.

A drop-in exhibition will also give people an opportunity to view the proposals, talk to the project team and ask questions. This will be held at The Graham Adams Centre in St James Road on Wednesday (July 16) from 1pm until 6pm.

**A CLASSIC GIVEN A MODERN POLISH:** DOCTOR Faustus will be dealing with the Devil at Leamington's Loft Theatre from July 16 to 26.

Christopher Marlowe's Faustus is a brilliant but embittered scholar, whose excessive ambition for knowledge, wealth, and power makes him willing to pay the ultimate price – eternal damnation.

One night he conjures the demon Mephistopheles from the underworld, who brokers a deal with Lucifer. For a period of twenty four years Faustus will enjoy supernatural powers, but must then surrender his soul.

Despite being tormented by doubt, Faustus agrees to the deal and signs in blood. But as he begins to revel in his new powers, the world around him starts to collapse and the clock inexorably counts down to the final moment of reckoning...

Director David Fletcher encouraged his creative team to give their imaginations free rein with this

production.

He said: "I am thrilled with the world they have created, full of amazing movement, music, lighting, sound, costumes, projections, scenery, and even pyrotechnics. Our excellent cast have thrown themselves into this world with great energy and inventiveness."

The music and soundscape for Doctor Faustus has been specially created by professional composer, Jonathan Fletche.

He said: "This play offers so much scope for creativity and my original score reflects and supports the narrative as we witness Faustus' tale unfold. I have drawn on numerous disparate musical genres for inspiration, including renaissance polyphony, jazz, folk, heavy metal, as well as exploring textures and atonality through abstract sound design. It's going to be a wild ride."

Visit [www.lofttheatrecompany.com](http://www.lofttheatrecompany.com) for further details.



## ASK THE EXPERT

Hand, wrist and elbow information evening

**INCLUDES A FREE 1:1 CONSULTATION**

**Event details**

 **Wednesday 2<sup>nd</sup> July 2025**

 **6pm - 8pm**

 **West Warwickshire Sports Complex**  
**78 Grange Road, Solihull, B91 1DA**

**BOOK NOW** 



**Mr Shyamalan**  
 Consultant Hand Surgeon

## Is Hand Pain Holding You Back?

Whether it's the frustration of struggling with buttons, the difficulty of opening jars, or the sadness of not being able to plant bulbs in your garden, it can be truly upsetting when pain and discomfort affect your hands.

Many common hand conditions share similar symptoms, but understanding the signs can help you identify what might be going on. Can you spot the symptoms of these common hand conditions?

**Common Hand Conditions and Their Symptoms**

**Carpal Tunnel Syndrome**  
 Carpal tunnel occurs when a nerve in your wrist is put under pressure. You might be at higher risk if you have diabetes, are pregnant, or if your job or hobbies involve repetitive hand movements.

**Symptoms to look out for:**

- Pins and needles in the fingers, especially the thumb, index, middle, and half of the ring finger.
- Numbness in the hand.
- Muscle wasting in the thumb area (in more severe cases).
- Waking from sleep due to hand discomfort or numbness.

**Dupuytren's Disease**  
 Dupuytren's disease involves a thickening of the tissue in the palm, fingers, or thumbs, often causing fingers to bend inwards towards the palm. Risk factors include smoking, heavy alcohol consumption, manual work, diabetes, and a family history of the condition.

**Symptoms to look out for:**

- A finger that has started to contract (bend downwards) or a noticeable lump in the palm.
- It most commonly affects the ring and little finger, but can appear in any finger or even the thumb.

**Common Cause of a Palm Lump: Thumb Arthritis**  
 Thumb arthritis frequently affects the basal joint at the base of the thumb. This can make everyday small tasks, like doing up buttons, quite challenging.

**Symptoms to look out for:**

- Pain and stiffness at the base of the thumb.
- A reduction in grip strength.
- Clicking and cracking sounds in the joint with movement.

**Trigger Finger**  
 Trigger finger happens when a tendon in the front of your hand thickens and gets "caught," causing your finger to lock in a bent position.

**Symptoms to look out for:**

- A finger that locks down in a bent position.
- A clicking sound or sensation when trying to straighten the finger.
- It can affect any finger, and sometimes the thumb.
- Pain that radiates up the arm from the affected finger.

**Why Choose Us? What Our Patients Say:**

"An extremely nice man. Professional but very pleasant and caring. He listened to me and took the time to explain things and advise me. I felt confident in the treatment offered and would have no hesitation in consulting him again and would recommend him to others".

"I have been treated by Mr Shyamalan before and find him excellent. That is the main reason for using the clinic".

"Genuinely caring surgeon, very happy with how I was treated".

"I can only say 5 stars for Mr Shyamalan. Friendly, kind and very easy to talk to. Very happy after keyhole surgery to help my wrist problems. Highly recommended".

**Get In Touch – We Can Help**  
 If you're experiencing any of the symptoms listed above, and if hand pain is getting in the way of your day-to-day life, please don't hesitate to get in touch with us. We're here to help you understand your condition and find the right solution to get you back to doing the things you love.

[www.midlandhandclinic.com](http://www.midlandhandclinic.com)

 or give us a call  
07973 696 606

**Website**  
[www.midlandhandclinic.com](http://www.midlandhandclinic.com)





# Rugby Antiques & Jewellery Valuation Day

**Tuesday 15th July 12pm to 2pm**

Valuations of Silver, Jewellery, Watches, Gold, Ceramics, Antiques and General Collectables.

**Items may be left to be consigned into Auction**

**The Black Horse  
43 The Green, Bilton,  
Rugby, CV22 7LZ**

**Donations in aid of WCS Care**



**Free Home Visits | Estate Clearances & Downsizing**

If you have a lot of items you want valuing, we offer a **FREE** home visit service where we can come to your home. Contact us for more info

**T: Hansons Warwickshire 07470 459309**

**E: [clivejones@hansonsauctioneers.co.uk](mailto:clivejones@hansonsauctioneers.co.uk)**

**[www.hansonsauctioneers.co.uk](http://www.hansonsauctioneers.co.uk)**



**Hansons Auctioneers, Etwall, Derbyshire, DE65 6LS**



Jamie Cullum with RSC co-artistic director Tamara Harvey. Picture Nicola Young (RSC).

# Entertaining marriage of mirth and morals

**The Constant Wife**  
RSC Swan Theatre

THE EMOTIONAL damage caused by marital infidelity and the moral ground available to the wronged party provide both the intellectual grist and the comedy in this delightful confection.

An updated version of a Somerset Maugham story, we're with the well-heeled and well-spoken young things of Bloomsbury - thrusting young doctors in sporting whites, design-obsessed women in fabulously bold frocks, butler at the ready.

In keeping with the 1920's feel of the piece Anna Fleische's set is as close as the Swan ever comes to a box set. Long lines and curves round a stylish door and a clever silhouetting reveals anyone heading up or down the screened-off staircases behind.

Beyond the gentle joy of seeing the philandering husband get his comeuppance at the hands of a resourceful and determined wife there is a fair amount of marital politics on display.

Is turning a blind eye preferable to not knowing at all? Is a wife's infidelity equal to or worse than her husband's? What balance should the cheated strike between revenge or forgiveness? Straight up vitriol or something altogether more condign?

Quite how much of this comes from Somerset Maugham's original, Laura Wade's script or just the nature of this particular production is debatable. Marriage and the role and independence of women within it has changed a great deal over the last hundred years but however modern and enlightened

thetic butler also shines.

But it's the women who drive the show and quality abounds wherever you look. Kate Burton as the mother whose morals and views represent the old guard and Amy Morgan as her daughter keen on not sweeping anything under the carpet are both as sharp as it gets.

Rose Leslie taking the pivotal role as the wronged woman whose astute observations and canny plans eventually bring her the resolution she's looking for is excellent - skittish, smilingly-barbed and never ruffled.

Tamara Harvey's production is smoothly paced and always entertaining, the overall style never allowed to become too stately. More might have been expected of Jamie Cullum's interesting but underused musical contribution but there's much to like at every turn.

Even with its modern re-polishing this is gentle and amusing fare and it's refreshing to see the RSC embrace such an offering. Perfect for the summer.

The Constant Wife runs until August 2. Visit [rsc.org.uk](http://rsc.org.uk) for tickets and performance details.

Matthew Salisbury



Rose Leslie (Constance Middleton) and John Middleton (Luke Norris). Picture by Johan Persson (RSC).

## Making his debut

MULTI award-winning jazz artist Jamie Cullum has made his theatrical stage debut at the RSC in Stratford.

The pianist, singer and broadcaster has composed the music for *The Constant Wife*, which is directed by RSC co-artistic director Tamara Harvey and runs until August 2 in the Swan Theatre.

Jamie said: "I am so excited to be working in theatre like this for the first time. As a composer who often works within the jazz genre, I am very familiar with the idea of evolving traditions and searching for new ways to play classic material.

"I feel honoured that the

brilliant RSC have entrusted me with this opportunity to bring some musical ingenuity to Laura's deliciously funny and subversive adaptation of W Somerset Maugham's original 1926 script. It's been a joy working with Tamara Harvey and bouncing ideas around with her."

Tamara was excited to be working with the musician known for his blending of jazz, pop, and rock.

"Jamie's contribution has invigorated contemporary jazz and engaged a new generation of listeners. Who better to help us create the world of *The Constant Wife*, 100 years after it was written?"

**BOOK YOUR MOBILITY SCOOTER SERVICE WITH FREE BATTERY CHECK NOW - CALL FOR DETAILS**

<p style="text-align: center;"><b>★ STAR DEAL ★</b></p> <p><b>COMPACT SCOOTER</b></p> <ul style="list-style-type: none"> <li>• Easy To Transport</li> <li>• Breaks into 4 Parts</li> <li>• 4 MPH</li> <li>• Free Insurance*</li> </ul> <p style="text-align: center;"><b>BRAND NEW</b> <span style="background-color: #0056b3; color: white; padding: 2px 5px;"><b>SAVE</b></span></p> <p>WAS <del>£999.99</del> <b>£699.99</b> <span style="background-color: #0056b3; color: white; padding: 2px 5px;"><b>£300</b></span></p>	<p style="text-align: center;"><b>★ STAR DEAL ★</b></p> <p><b>RISER RECLINER CHAIR</b></p> <p>Relax in total comfort, helps to stand you up from sitting and raises your legs to help with circulation</p> <p style="text-align: center;"><b>BRAND NEW</b> <span style="background-color: #0056b3; color: white; padding: 2px 5px;"><b>SAVE</b></span></p> <p>WAS <del>£799.99</del> <b>£499.99</b> <span style="background-color: #0056b3; color: white; padding: 2px 5px;"><b>£300</b></span></p>	<p style="text-align: center;"><b>STAIR LIFTS</b></p> <p>Give your life a lift Enjoy your home</p> <ul style="list-style-type: none"> <li>• Safe and reliable</li> <li>• Easy to use</li> <li>• Remote control</li> <li>• Swivel Seat</li> <li>• Safety sensors</li> </ul> <p style="text-align: center;"><b>FULLY FITTED</b> <b>From</b> <b>£1,699</b></p> <p style="text-align: center;"><b>CALL FOR A FREE QUOTE</b></p>	<p style="text-align: center;"><b>NEW MOBILITY SCOOTER</b></p> <p style="text-align: right;"><b>FROM</b> <b>£15 PER WEEK</b></p> <p style="text-align: right;">Do You Receive The Higher Rate Mobility Allowance?</p> <p>If so you can use part of this allowance to get A New Scooter or Powered Wheel Chair From as Little as £15 a week</p> <p style="text-align: center;"><b>CALL FOR A FREE QUOTE</b></p>
---	---	---	--

Wheelchairs from **£129.99** • Motorised Bath Lifts from **£279.99** • Commodes from **£59.99** • 3 Wheel Walkers from **£69.99**

**CALL TO BOOK YOUR SCOOTER SERVICE**

**02476 630444**

Max Mobility Ltd, 7 Sherbourne Arcade, Coventry, CV1 1DN (opposite Home Bargains)  
[www.maxmobilityltd.co.uk](http://www.maxmobilityltd.co.uk)  
Pictures for illustration • Prices with VAT Exemption

# Extra funding will bring 26 new places for SEND pupils

PLACES for children with Special Educational Needs and Disabilities (SEND) are being increased at Warwickshire primary schools.

Warwickshire County Council agreed to an investment of over £430,000 to expand specialist education provision and improve primary school facilities at a recent cabinet meeting.

A total of 26 new specialist places for SEND youngsters are being created.

Thomas Jolyffe Primary School in Stratford will receive £71,000 to create an eight-place provision for pupils with communication and interaction needs.

Birchwood Primary School in Polesworth, subject to DfE approval, will receive £132,000 to establish an eight-place provision, also for pupils with communication and interaction needs.

Tysoe Church of England Primary School in Upper Tysoe will receive £77,000 for an eight-place provision for children with communication and interaction needs.

Cabinet also approved an increase in the number of specialist places at Welford Primary School from eight to ten.

This initiative is a key part of WCC's

strategy to increase its specialist provision places from just over 200 to more than 530 by 2028, ensuring more children can be educated locally.

And Woodloes Primary School in Warwick will benefit from an investment of £157,000 to improve its outdoor learning and play areas for pre-school and reception pupils. The project will be funded entirely by developer contributions and will include new canopies, a messy play area, a performance space, and improved surfacing.

WCC's education spokesperson Coun Wayne Briggs said: "This is a fantastic step forward in our mission to ensure every child in Warwickshire has access to the high-quality education in a setting that is right for them. The creation of these new resourced provisions at Thomas Jolyffe, Birchwood, and Tysoe primary schools is central to our Education Sufficiency Strategy.

"This investment will allow more children with special educational needs to flourish in their local mainstream schools, alongside their peers. It's about creating inclusive, supportive learning environments where every child can reach their full potential."



The Alcester Community Shed was among the groups which previously secured a grant. Picture by Marcus Mingins 3824006MMR

## Community cash on offer

COMMUNITY and voluntary groups are being urged to apply for cash from Warwickshire County Council's Councillor Grant Fund.

Each of the 57 councillors in Warwickshire is allocated £8,000 annually to support small-scale projects within their divisions.

These projects should align with key areas such as improving access to services, tackling loneliness and isolation, improving physical and mental health and wellbeing, or enhancing the local environment and sustainability.

Applications can be submitted until July 20 on the council's website, and there are two different forms depending on whether the grant needed is over or under £350.

WCC spokesman Coun Michael Bannister said: "The Councillors' Grant Fund is a fantastic way for us to support the brilliant work happening in our communities. It gives councillors the means to back local groups and volunteers who know their areas best and are already making a difference.

"This fund helps turn great local ideas into action. It's about giving people the tools to shape the kind of Warwickshire they want to live in. Stronger, more inclusive, and full of opportunity."

Visit [www.warwickshire.gov.uk/cllrgrants](http://www.warwickshire.gov.uk/cllrgrants) for more information about the grant and to submit an application.



### Thinking about retirement?

Get your finances in order with award-winning independent financial advice in Leamington Spa.

Book a free retirement planning consultation with one of our experts today!

☎ 0800 6342 111  
✉ [office@simpsonfs.co.uk](mailto:office@simpsonfs.co.uk)  
🌐 [www.simpsonfs.co.uk](http://www.simpsonfs.co.uk)

Find out more



Follow us    

# How to give your bank balance a holiday too...



WE all know holidays are not cheap, with travel, accommodation, excursions and more all adding up.

That's why Marc Porcar, CEO of QR Code Generator PRO SL - qrify.com - has compiled some top tips on how to save money on your trip.

He said: "A trip abroad doesn't have to be as expensive as you think. Planning smartly and choosing options that are suitable for your budget will help you keep costs down while booking and enjoying your holiday."

**Travel at less busy, off-peak times** - Holidays will be cheaper if booked during the school term. Try to remain flexible and open-minded regarding dates, flight times and accommodation types. If you have to travel in the school holidays, choosing which day to travel can make a difference. Flights leaving in the earlier days of the week tend to be cheaper.

**Make the most of coupons and discounts** - Many booking sites will have discounts or coupons available to help customers save cash. Utilise these when possible, as by opting for a slightly more expensive holiday, you may end up saving more if there's a discount or coupon that will reduce the price significantly.

**Take advantage of comparison websites** - These websites are great tools to ensure you're getting the best deals. Comparison websites are also extremely useful when it comes to purchasing travel insurance.

**Consider an all-inclusive package holiday** - An all-inclusive package can be a fantastic way to save money. Half-board packages can be ideal, as you can eat out for lunch in the day and have dinner at your hotel. Package holidays often work out cheaper and are fuss-free if your priority is having the most restful and relaxing time possible.

**Pack light and avoid paying for luggage** - If you're taking heavy cases, weigh them before leaving your house to avoid extra charges. Try to pack light by compiling a packing list in advance and only pack what you need. Pick clothing that is light and be sure to include some items you can re-wear or mix and match with other pieces.

**Opt for free and low-cost activities** - Sightseeing is a great way to fully experience the country you are visiting and spend quality time with loved ones on holiday, whereas going to the beach or pool is the perfect way to unwind. Museums, galleries, and

other cultural landmarks also tend to be free or have low-cost entry. Your holiday resort or travel agent might provide affordable or inclusive excursions and activities.

**Choose walking over driving** - Walking comes with a full range of benefits - it is easier, cheaper, great exercise and saves potentially having to learn the driving customs of a foreign country. If you are planning to travel a little further from your accommodation, public transport might be the way to go. It's a good idea to research in advance any distant cities or towns you want to visit and what the public transport options are.

**Cook some of your meals** - Consider cooking some of your holiday meals instead of eating out every night. If opting for an all-inclusive vacation, all meals will be covered, but regardless of your holiday board, it is likely you will want to try out local restaurants at least once or twice. To select more affordable options, try using a website like Tripadvisor to view the price ranges.

**Provide your own entertainment** - You might want to bring your own entertainment to keep you occupied on lazy evenings. You could bring a portable DVD player and some movies, or bring a laptop and use the streaming services you

already have. Have a look into the free entertainment options provided by hotels. Family-friendly hotels will also likely provide entertainment for children on some nights. A good book is also always a winner.

**Ensure you are fully covered to avoid incurring extra charges** and you need travel insurance when going abroad. It is also worth checking for extra healthcare you may be able to access. A GHIC card lets you access state healthcare in some countries on the same basis as residents. Do your research to ensure you have taken full advantage of every option available to you.

## Check out our E-Editions!

**Coventry Observer** .co.uk

**Upgraded route set to improve**

Get it on your phone

Windows Plus

Windows | Doors | Conservatories | Patios | Fencing & Softlites

02436 238222

www.windows-plus.co.uk

**Rugby & Lutterworth Observer**

**Izzy di her to**

DRIVES

Are you looking to your driveway

Tel: 0800 303259 | Mob: 07773 911552 | www.drives4u.co.uk

**Leamington Observer**

**Homes to a re**

DRIVES

Are you looking to your driveway

Tel: 0800 303259 | Mob: 07773 911552 | www.drives4u.co.uk

[www.coventryobserver.co.uk/editions](http://www.coventryobserver.co.uk/editions)  
[www.rugbyobserver.co.uk/editions](http://www.rugbyobserver.co.uk/editions)  
[www.leamingtonobserver.co.uk/editions](http://www.leamingtonobserver.co.uk/editions)

The same paper you love on your **mobile**, **tablet** and **computer**



# HOLLOWAYS

A U C T I O N E E R S

EST. 1972



## Warwick Silver & Jewellery Valuation Day Monday 14th July 12pm to 2pm

Valuations of Silver, Jewellery, Watches, Gold, Antiques and General Collectables.

Items may be left to be consigned into Auction

The Racehorse,  
34 Stratford Road, Warwick,  
CV34 6AS

Donations in aid of WCS Care



### Free Home Visits | Estate Clearances & Downsizing

If you have a lot of items you want valuing, we offer a **FREE** home visit service where we can come to your home. Contact us for more info

**T: Hansons Warwickshire** 07470 459309

**E:** [clivejones@hansonsauctioneers.co.uk](mailto:clivejones@hansonsauctioneers.co.uk)

**[www.hansonsauctioneers.co.uk](http://www.hansonsauctioneers.co.uk)**



**Hansons Holloway's, Banbury, Oxfordshire, OX16 5NB**

# Top tips for making sure your garden is a paradise for pets

HAVING a pet is one of life's simple joys, and our country is a nation of pet lovers. Think about making your garden a safe and happy place for them to enjoy.

British Garden Centres has put together some tips and advice on how to have a pet friendly garden.

Amy Stubbs, Project and Development Manager at British Garden Centres said: "With a little thought and care, your garden can be a wonderful, safe place for your pets to enjoy alongside you. By choosing the right plants, adding sensory touches, creating play areas, using natural pest control, and securing your space, you'll make sure your outdoor area is a happy haven for all members of your family."

**Pet friendly plants** - Some of our well-loved plants can be harmful if your pet decides to nibble on them. Common favourites like bluebells, daffodils, crocuses, tulips, amaryllis, azaleas, lilies, lily of the valley, begonias, hydrangeas, and ivy all carry risks if eaten.

If you love these plants, it's best to keep them out of reach or create barriers so your pets can't get to them. Thorny plants are also best avoided if your pet is the curious, adventurous type.

There are plenty of plants that won't harm your pets. Lavender, honeysuckle, calendula, nasturtiums, sunflowers, roses, fuchsias, rosemary, dill, and fennel are all safe choices that will keep your garden colourful and fragrant.

Plant herbs and greens your pets can safely nibble on, such as catnip, lemon-

grass, valerian for cats, and some fruits and vegetables for dogs.

Using pots and planters is a smart way to keep plants safe from playful paws and curious noses as they lift the plants off the ground.

**Pest free for pets** - Many pesticides are toxic to animals, so it's better to try natural alternatives. Crushed eggshells can keep slugs and snails off your plants, citrus peels can help trap ants, and a gentle spray of soapy water can take care of aphids. Look for pet friendly garden care products in store if you need to use anything stronger than organic methods.

Plant repelling herbs like lavender, sage, and peppermint which not only help keep the creepy crawlies away but also add lovely scents to your garden. Encourage helpful wildlife like birds and hedgehogs with houses and food that naturally keep pests in check.

**Create sensory experiences in your garden** - Think about adding different textures and scents to your garden.

Mix things up by combining soft grass, smooth paving stones, rough cobbles, and mulch - but be aware that cocoa mulch contains the same ingredient that makes chocolate toxic to your dog. Instead, choose natural wood chips or gravel when mulching.

Herbs and scented plants are a real treat for their noses, while ornamental grasses and bamboo can create gentle sounds to soothe as the wind moves through them.

A small water feature can be a lovely addition, too. The sound of trickling



water is therapeutic for both pets and their humans.

**Playgrounds for pets** - To protect your plants and lawn, create a special play area for your pets.

This could be a corner where they can dig, chase toys, climb, or just have fun without causing damage. For cats, sturdy shrubs and bushes like ceanothus, choisya, dwarf lilac, and ferns can offer exciting places to climb and hide, turning your garden into their own little adventure playground.

Don't forget to provide some shade for hot days and a bowl of fresh water to keep your pets cool and hydrated.

**Boundaries for pets** - Establish clear boundaries for your pet. Use short fences, borders, or raised beds to mark off-limits areas. Creating pathways with pet friendly materials like flagstones or smooth gravel helps guide pets and protects delicate plants. Leave a border between fences and planting beds if your pet likes to patrol its patch.

**Security for pets** - Make sure fences have no gaps or holes, especially if you have smaller animals like puppies, rabbits, tortoises or guinea pigs. Pets who like to dig can be deterred by reinforcing fence bases or laying down stone or paving strips along the edges.

Dogs can be great jumpers, so a fence at least six feet tall is a good idea if you want to keep them inside.

Always lock gates, garages and shed doors every time you come and go to prevent any sneaky escapes.

**JustGo!** Holidays ★ ★ ★ ★ ★ Trustpilot

By Coach from Coventry, Leamington Spa

Reader Travel **CoventryObserver.co.uk**



## TORQUAY, SOUTH DEVON & DARTMOOR NATIONAL PARK

Departing Mon 6 Oct '25

Torquay is the perfect location to enjoy a seaside getaway in the heart of the English Riviera! We explore this lovely landscape with a cruise on the River Dart, a scenic drive through the Dartmoor National Park and spend time in beautiful Dartmouth.

### SO MUCH INCLUDED...

- ✓ Return coach travel from Coventry
- ✓ 4 nights at the Riviera Hotel, Torquay (JG3 rating) with dinner & breakfast
- ✓ 2 for 1 bar offer (October dates only)
- ✓ Entertainment some evenings
- ✓ Scenic drive through Dartmoor National Park
- ✓ Cruise on the River Dart
- ✓ Excursions to Buckfast Abbey, Princetown, Tavistock, Dartmouth & Totnes

Optional excursion to Brixham & Teignmouth (£14pp)

5 Days by Coach **only £369**

Single Supplement £75



## HARRY POTTER STUDIO TOUR & LONDON

Departing Sat 6 Sep '25

Join us as we enter the spectacular world of Harry Potter and look behind the scenes of this worldwide phenomenon at the Warner Bros. Studio Tour London. With time to enjoy the attractions of London and hotel accommodation included, a magical break is assured!

### SO MUCH INCLUDED...

- ✓ Return coach travel from Coventry
- ✓ Overnight stay at the Hilton London Watford (JG3 rating) with breakfast
- ✓ Admission to the Warner Bros. Studio Tour London - The Making of Harry Potter
- ✓ Free time in London for shopping & sightseeing

2 Days by Coach **only £229**

Single Supplement £60



## ELVIS EVOLUTION & LONDON

Departing Sun 28 Sep '25

He is the 'King of Rock and Roll' whose legacy cannot be underestimated, and now we can experience Elvis Presley's legendary journey for ourselves at Elvis Evolution in London. Don't miss your chance to see this celebration of one of music's greatest icons.

### SO MUCH INCLUDED...

- ✓ Return coach travel from Coventry, Leamington Spa
- ✓ Overnight stay at a selected hotel (JG3 or JG4 rating) outside London with breakfast
- ✓ Admission to Elvis Evolution
- ✓ Free time in London for shopping & sightseeing

2 Days by Coach **only £209**

Single Supplement £50

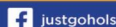
For more information, or to book, please call

**03332 342 514** Quote **osg**

033 numbers are free within inclusive minutes packages otherwise standard rates apply.

or visit us online at

**justgoholidays.com/OSG**



These packages are subject to JustGo! Holidays terms & conditions. Coach bookings are protected by Bonded Coach Holidays & the Association of Bonded Travel Organisers Trust Ltd. Air holidays are ATOL protected No.3088. Prices are per person, based on two people sharing a room & are based on bookings made up to 7 days post publication, after which prices may fluctuate. Call to OSO numbers are free with inclusive minutes packages, else standard rates apply. Other fees of date, hotel, airport or pick-up location may incur a supplement. Please see website or call for full details.

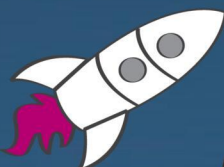


BEST COMPANY



# Exceptional Early Years Education in Warwickshire

At Little Lodge and Little Prep, we offer a warm, nurturing and inspiring environment for children aged 6 months to 4 years. With a shared commitment to high-quality care and early education, our nurseries are located in the heart of Leamington Spa and Stratford-upon-Avon, providing a 'home-from-home' setting where each child is supported to thrive.



## Little LODGE

 Leamington Spa

Located within the grounds of **Arnold Lodge School**, Little Lodge offers a calm and caring nursery setting in the heart of Leamington Spa.

[www.thelittlelodgenursery.com](http://www.thelittlelodgenursery.com)

 01926 886003

 [admissions@thelittlelodgenursery.com](mailto:admissions@thelittlelodgenursery.com)

31-33 Binswood Avenue, Leamington Spa CV32 5SE



## Little PREP

 Stratford-upon-Avon

Situated at **Stratford Preparatory School**, Little Prep is a welcoming and enriching nursery space for young learners.

[www.littleprep.co.uk](http://www.littleprep.co.uk)

 01789 297993

 [admissions@stratfordprep.co.uk](mailto:admissions@stratfordprep.co.uk)

Church House, Old Town, Stratford-Upon-Avon CV37 6BG

Book a visit 



Book a visit 



# SUDOKU

Complete the grid so that every row, every column and every 3 x 3 box contains every digit from 1 to 9.

## EASY

	4	5			6			
		9		5		1		6
8			9			5	4	
	7		1	6				2
2	3			4	5		9	
5		1		7			8	4
	1		3		7			5
3		2		1		8		9
			5				1	

## HARD

					1	3		
	9	1			7	8	5	
2				3				
6		9						3
	5							9
	3					1		4
				1				5
	1	6	5			4	2	
		7	6					

# PATHFINDER

Beginning with the top highlighted letter, follow a continuous path of words associated with the given subject. The trail goes through each letter once, twisting up, down and sideways, but never diagonally.

## Landlocked Countries

**L** E M C H B O K A Z H S T A N  
 U X B L A D L R E A K T S Z Y  
 R U O A P V I G N A A Y R G  
 G M A N E I A N A P T N K R U  
 N O I U A I A Y R A S E M K T  
 G O L G A R U A U G I N N I A  
 A V A D N T S U S A A N E M R  
 T I O P S A N R A N H I S T A  
 A C I I A N M A L D G F A A N  
 N T H A B A W R E O R R A K A  
 C E Y R O T S I B I L O V O I  
 I T G A L O M N O S A M O S B  
 Z Y N U D O D N A E R I K A M  
 I A B H A V T Z L I B J I Z N  
 M B W E S W I E R A T A S T A

Solutions opposite

# CROSSWORD

1		2		3	4		5		6		7
				8							
9							10				
11											
											12
13		14				15					
					16						
	17								18		
19											
20					21						
22									23		

## ACROSS

- Saucy (4)
- Jam (8)
- Rubbers (7)
- Hackneyed (5)
- Teacher (12)
- Lottery (6)
- Hesitate (6)
- Impolite (12)
- Boredom (5)
- Wordy (7)
- Commonplace (8)
- Pluck (4)

## DOWN

- Delight (8)
- Extend (5)
- Recommence (6)
- Adequate (12)
- Apparel (7)
- Pitcher (4)
- Memory (12)
- Outlook (8)
- Simulated (7)
- Tremble (6)
- Smell (5)
- Nil (4)

Scribble pad

# LADDER

Using the clues provided, fill in each step of the ladder with a new word, changing one letter at a time.

- Wild animal
- Hit
- Unsurpassed
- Broken
- Household dirt



# NINER

Each number from 1 to 9 represents a different letter. Solve the clues and insert the letters in the appropriate squares to discover a word which uses all nine letters.

- 7629183** gives a tube station;
- 457453** gives a second tube station;
- 89154** gives a commuter town.

1	2	3	4	5	6	7	8	9
---	---	---	---	---	---	---	---	---

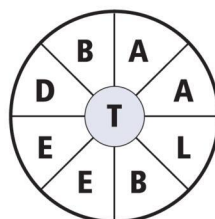
# CODEWORD

This puzzle has no clues. Instead, every number printed in the grid represents a letter, with the same number always representing the same letter. For example, if 8 turns out to be a V, you can write in V wherever a square contains 8. Using your knowledge of words, complete the puzzle.

	2	10	24	25		4			12	1	6	11		
A														
B		24			12	14	15	9	10		25	25		
C														
D	11	2	6	26	1		17		24	25	19	3	13	
E														
F		6				3		6		25		4	11	
G														
H		4	24	2	4	1	25	26	7		18	15	22	
I														
J	12					25		16			6		2	
K														
L	2	21	25	24	16	2		24	15	3	19	11	2	
M														
N	26		23					3		11			20	
O														
P	24	15	4			21	2	19	26	3	9	15	26	
Q														
R	3		2			2		6		19			24	
S														
T	11	2	14	25	19			23		15	16	25	3	19
U														
V	15		25		11	2	9	15	26			8		
W														
X	26	6	24	22				15			5	25	25	24
Y														
Z	1	2	3	4	5	6	7	8	9	10	11	12	13	
	14	15	16	17	18	19	20	21	22	23	24	25	26	

# WORDWHEEL

You have 10 mins to find as many words as possible using the letters in the wheel. Each must use the hub letter and at least 3 others. Letters may be used only once. You cannot use plurals, foreign words or proper nouns. There is at least one 9-letter word to be found.

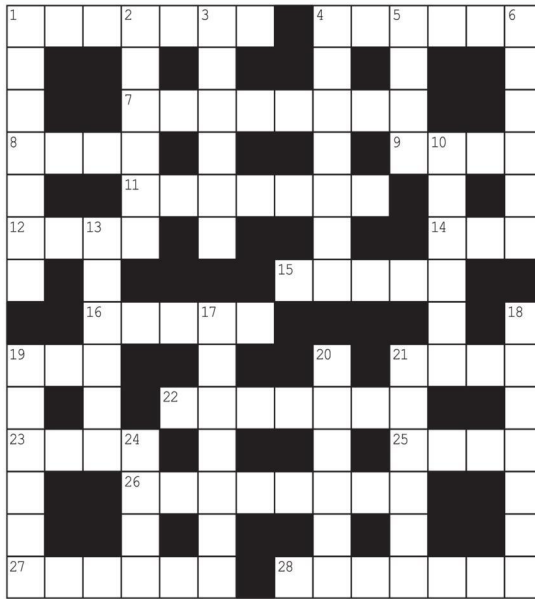


How you rate  
 15 words: average    25 words: very good  
 20 words: good       30 or more: excellent.

# GENERAL KNOWLEDGE CROSSWORD

## ACROSS

- 1 Kind of domestic cat (7)
- 4 Mother of the prophet Samuel (6)
- 7 Short, squat gun used in trench warfare, etc. (8)
- 8 A counter-tenor (4)
- 9 A precious stone (4)
- 11 Kind of potherb (7)
- 12 See 20 Down
- 14 Famous French marshal (3)
- 15 Philosopher of a school founded by Zeno (5)
- 16 Freshwater fish of the carp family (5)
- 19 & 3 Down Hero of a novel by Mark Twain (3,6)
- 21 Asian desert (4)
- 22 In Greek legend, a creature half man, half horse (7)
- 23 Bone of the forearm (4)
- 25 An object of worship (4)
- 26 Belonging to the first ages (8)
- 27 See 6 Down
- 28 Intervening time (7)



## DOWN

- 1 A cured herring (7)
- 2 Aristocratic ruffian of early 18th century London (6)
- 3 See 19 Across
- 4 See 18 Down
- 5 Roman emperor proverbial for his tyranny (4)
- 6 & 27 Across London thoroughfare associated with eminent surgeons (6,6)
- 10 Kind of South American cloak (6)
- 13 Opera by Bizet (6)
- 17 A pharmacist (7)
- 18 & 4 Down Maidstone-born writer famous for Table Talk, etc. (7,7)
- 19 Sign of the zodiac (6)
- 20 & 12 Across Flemish artist whose works include Man in a Red Turban (3,3,4)
- 21 A young salmon (6)
- 24 Polygonal church recess at the east end of the choir (4)

# SOLUTIONS

ACROSS: 1 Burmese; 4 Hannah; 7 Howitzer; 8 Alto; 9 Opal; 11 Chevill; 12 Eyck; 14 Ney; 15 Stolt; 16 Road; 19 Tom; 21 Gobi; 22 Centaur; 23 Ulna; 25 Ido; 26 Primeval; 27 Street; 28 Interim. DOWN: 1 Bloat; 2 Mohock; 3 Sawyer; 4 Hazlett; 5 Nero; 6 Harley; 10 Poncho; 13 Carmen; 17 Chemist; 18 William; 19 Taurus; 20 Jan van; 21 Grise; 24 Apse.

## General Knowledge Crossword

ACROSS: 1 Pert; 3 Preserve; 9 Erasers; 10 Tite; 11 Schoolmaster; 13 Raffle; 15 Father; 17 Discourteous; 20 Ennu; 21 Verbose; 22 Ordinary; 23 Gilt; Down: 1 Pleasure; 2 Reach; 4 Resume; 5 Satisfactory; 6 Raiment; 7 Ewer; 8 Recollection; 12 Prospect; 14 Feigned; 16 Quiver; 18 Odour; 19 Zero.

## Crossword

DEBATABLE: Luxembourg, Mongolia, Nepal, Chad, Bolivia, Austria, Uganda, Vatican City, Zimbabwe, Switzerland, Moldova, Hungary, Ethiopia, Botswana, San Marino, Serbia, Tajikistan, Zambia, Kosovo, Mali, Niger, Kazakhstan, Kyrgyzstan. TINDERBOX: Belarus, Andorra, Afghanistan, Armenia, Turkmenistan, Paraguay.

## Wordwheel Pathfinder

1=H, 2=O, 3=A, 4=P, 5=J, 6=U, 7=Y, 8=Z, 9=N, 10=G, 11=L, 12=S, 13=X, 14=W, 15=I, 16=D, 17=Q, 18=F, 19=L, 20=K, 21=Y, 22=B, 23=M, 24=R, 25=E, 26=C

## Ladder

7	6	8	2	5	1	3	4	9	8
3	5	2	6	1	4	8	7	9	3
9	1	4	3	8	7	2	6	5	4
5	9	1	2	7	3	6	8	4	4
2	3	6	8	4	5	7	9	1	1
4	7	8	1	6	9	3	5	3	8
8	6	3	9	2	1	5	4	7	7
7	2	9	4	5	8	1	3	6	5
1	4	5	7	3	6	9	2	8	9

## Easy

## Sudoku

## Hard



# It's time to Like, Follow & Subscribe

Don't be LEFT BEHIND.....

# BREAKING NEWS WHAT'S ON SPORT INTERVIEWS

- CoventryObserver
- LeamingtonObserver
- RugbyObserver

- @CovObserverNews
- @LeamObs
- @RugbyObserver

- CovObserver
- Leamington.Observer
- Rugby.Observer




Come and see our  
**HOUSEPLANT SELECTION**

**Garden Centre**  
Mon-Sat: 9.00am to 5.00pm  
Sunday: 10.00am to 4.00pm

**Restaurant**  
Mon-Sat: 9.30am to 3.00pm  
Sunday: 10.00am to 3.00pm  
(Hot food last orders 3.00pm)

**Drinks, Cake and Ice Cream**  
Mon-Sat: 9.30am to 3.30pm  
Sunday: 10.00am to 3.30pm

**Ambleside Solihull,**  
Norton Lane,  
Earlwood,  
Solihull B94 5LR

Call 01564 702800

We are currently updating our website to give it a brand new look. You can sign up to become an Ambleside Garden Centre Member to receive

Exclusive Discounts  
Exclusive Events  
Chance to win prizes including Trips away

[www.amblesidesolihull.co.uk](http://www.amblesidesolihull.co.uk)



# See you in store soon!



**Did you know that we grow almost all our own bedding and summer flowering perennials ourselves?**

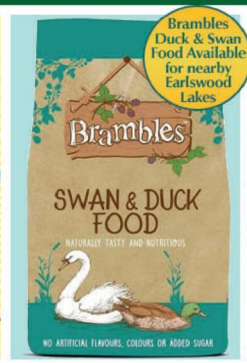
**We have our own nursery, just a few miles from the garden centre, so all our plants arrive looking fresh and ready to grow in your gardens!**

**Solar Stake Lights and Water Features**  
**50% OFF** Plenty of choices in store  
Till 31st July T&C Apply

**Great selection of SUMMER BEDDING and BASKET PLANTS available**



**AMBLESIDE SOLIHULL**  
**Ice Cream PARLOUR**  
DELICIOUS TASTE COOL & REFRESHING  
Best flavour collection




**Brambles**  
SWAN & DUCK FOOD  
NATURALLY TASTY AND NUTRITIOUS  
NO ARTIFICIAL FLAVOURS, COLOURS OR ADDED SUGAR

You can find & follow us on...




**Calor Gas Bottles NOW IN STOCK**



**GROW YOUR OWN**  
We have vegetable plants in stock



**HOSE PIPES IN STOCK**



**Relax in our Restaurant**




AMBLESIDE  
Start your day with a delicious breakfast!

Monday to Saturday 9.45am - 11.30am  
Sunday 10.00am - 11.30am



Join us for lunch.  
Served daily from 12pm - 3.30pm

# Motoring

www.carfinder247.co.uk

TELEPHONE 01926 451900 FACSIMILE 01527 584371



## Renault takes home the top spot

**THE RENAULT 5 E-Tech electric has taken the number one spot in the EcoCar Electrified Top 50 Awards.**

It was a double victory for the electric supermini after it also scooped the award for the 'Best Electric Small Car', while there were also plaudits for the Clio and Rafale E-Tech.

There were four Renault models in the top 50 list, including the Renault Scenic E-Tech electric – last year's overall winner – which took sixth place and made it two cars in the top 10 for Renault.

Ian Robertson, Editor and Publisher of Diesel&EcoCar which organises the annual awards, said: "Renault has pulled off a masterstroke with the 5 E-Tech, a retro-styled hatchback with cutting-edge EV credentials that confidently claims our top spot for 2025. Designed entirely afresh, yet paying tribute to the beloved original 5, it combines Gallic charm with modern engineering to deliver one of the most compelling electric cars of the year.

"For reinventing an icon and making it more relevant than ever, the Renault 5 E-Tech

is our Electrified Car of the Year 2025, as well as grabbing the gong for Best Electric Small Car 2025. A round of applause please for our winner."

Referencing the style of the original model, the Renault 5 E-Tech electric is also the epitome of modernity, with agile handling and innovative technology that delivers a driving range of up to 252 miles on a single charge. Available from £22,995 OTR in a choice of four trim levels, the Renault 5 E-Tech electric is fun to drive and fun to be around, with its heart-winning design and vibrant range of body colours.

The panel of expert judges were also hugely impressed with the Clio E-Tech, which went on to take the award for the 'Best Hybrid Small Car.' Available from £21,895 in full hybrid E-Tech 145 form and in a choice of three trim levels – evolution, techno, and esprit Alpine – the Clio E-Tech full hybrid matches its innovative and efficient hybrid powertrain with bold styling and a cutting-edge digital experience.

Recognising the qualities that made the

Clio E-Tech a worthy winner, Robertson added: "The Clio has matured into a genuinely refined small car, with its 1.6-litre E-Tech full hybrid system offering up to 67.3mpg and smooth electric-petrol transitions. Compact yet comfortable, the Clio's recent facelift brings crisper styling and an improved infotainment system. It's our Best Hybrid Small Car for 2025, thanks to its efficient drivetrain, tidy handling and high-quality finish. It's a strong contender in the competitive supermini class and a real bargain."

Completing the quartet of awards and earning praise for its performance and style, the Renault Rafale E-Tech full hybrid was voted 'Best Hybrid Large SUV'.

Robertson explained: "Rafale is a new name in the Renault lineup and is a sleek flagship SUV coupé that offers strong performance from its E-Tech hybrid powertrain and standout style. A 1.2-litre petrol engine and twin electric motors deliver brisk acceleration and low emissions, earning it the title of Best Hybrid Large SUV. Inside, the Rafale feels premium and technology-rich, with sus-

tainable materials and a clean, driver-centric layout. It's a bold and stylish addition to Renault's expanding electrified range. The plug-in hybrid variants offer a brisk 296bhp and four-wheel drive."

Renault Rafale is crafted around optimal driving pleasure, featuring a spacious and stylish cabin where exceptional material quality meets sustainability. Priced from £38,195, Rafale is offered in a choice of four trim levels – techno, techno esprit Alpine, iconic esprit Alpine and the range-topping atelier Alpine, available exclusively with the E-Tech plug-in hybrid 300hp powertrain that is as powerful as it is efficient.

Adam Wood, Managing Director, Renault UK, said: "We're exceptionally pleased to see so many models feature in EcoCar's expertly judged list. These awards highlight how our E-Tech technology brings benefits to every corner of the market, reaffirming the success and appeal of firm favourites like Clio and Scenic while recognising the class-leading credentials of our latest models, such as Renault 5 and Renault Rafale."

# Classified

TELEPHONE 01527 588688 FACSIMILE 01527 584371

## PUBLIC NOTICES

### Warwickshire County Council

**ROAD TRAFFIC REGULATION ACT 1984**  
 Warwickshire County Council has made the following Temporary Traffic Orders:

**CHURCH LANE, LITTLE LONDON, FILLONGLEY**  
**Order Effect:** Road closed between its junction with Nuneaton Road.  
**Reason for Order:** Works to lay duct in the carriageway and verge.  
**Order Commences:** 15 July 2025 for up to 18 months.  
**Anticipated Completion:** 18 July 2025.  
**Access & Diversion:** Nuneaton Road, Coventry Road and vice versa.  
**Contractor:** Callan Connect, Tel: 01213 275 167.

**MAIN STREET, BRANDON**  
**Order Effect:** Road closed to vehicular traffic.  
**Reason for Order:** To safely enable works for small sluice valve renewal.  
**Order Commences:** 15 July 2025 for up to 18 months.  
**Anticipated Completion:** 17 July 2025.  
**Access & Diversion:** Station Road, Main Street and vice versa.  
**Contractor:** Chevron Traffic Management Ltd, Tel: 03300 080 820.

**Warwickshire County Council proposes to make the following Temporary Traffic Orders:**

**PIT HILL, BUBBENHALL**  
**Order Effect:** Road closed to vehicular traffic.  
**Reason for Order:** Works to install new water hydrant.  
**Order Commences:** 29 July 2025 for up to 18 months.  
**Anticipated Completion:** 31 July 2025.  
**Access & Diversion:** Pit Hill, Ryton Road, Spring Hill and vice versa.  
**Contractor:** Chevron Traffic Management Ltd, Tel: 03300 080 820.

**WIXFORD ROAD, EXHALL**  
**Order Effect:** Road closed to vehicular traffic.  
**Reason for Order:** To enable new water connection works.  
**Order Commences:** 28 July 2025 for up to 18 months.  
**Anticipated Completion:** 30 July 2025.  
**Access & Diversion:** Grafton Road, Wixford Road, Bidford Road and vice versa.  
**Contractor:** Go TM Ltd, Tel: 07880 034 087.

For all of the above temporary orders, pedestrian access to and egress from properties and land situated adjacent to the length of road to be closed will be maintained at all times. Vehicular access will be maintained where possible.

**To report any problems with these works or for further details of our current & planned roadworks visit our website warwickshire.gov.uk/roadworksmap or call us 01926 412515.**

**S Duxbury, Director of Strategy, Planning & Governance, Shire Hall, Warwick CV34 4RL Date 11 July 2025**

### Goods Vehicle Operator's Licence

**Bradley Pointon trading as Pointons site services LTD of Bakersfield farm, Hollyberry End, Meriden CV7 7HP** is applying for a licence to use **Eastland Fields Farm, Marston Lane, Marston Jabbett, Bedworth, CV12 9SD** as an operating centre for 4 goods vehicles and 2 trailers

Owners or occupiers of land (including buildings) near the operating centre(s) who believe that their use or enjoyment of that land would be affected, should make written representations to the Traffic Commissioner at Quarry House, Quarry Hill, Leeds, LS2 7UE, stating their reasons, within 21 days of this notice. Representatives must at the same time send a copy of their representations to the applicant at the address given at the top of this notice. A Guide to Making Representations is available from the Traffic Commissioner's office.

**JANE LESLEY FARLEY (Deceased)**  
 Pursuant to the Trustee Act 1925 any persons having a claim against or an interest in the Estate of the above named, late of 55 Silverdale Close Aldermans Green Coventry, CV2 1PZ, who died on 04/10/2024, are required to send written particulars thereof to the undersigned on or before 12/09/2025, after which date the Estate will be distributed having regard only to the claims and interests of which they have had notice.

**MR CHRIS HOLLAND,**  
 117-119 New Union Street Coventry CV1 2NY

**SUCHA SINGH (Deceased)**  
 Pursuant to the Trustee Act 1925 any persons having a claim against or an interest in the Estate of the above named, late of 21 Harrow Road Leamington Spa Warwickshire, CV21 2JD, who died on 20/10/2020, are required to send written particulars thereof to the undersigned on or before 12/09/2025, after which date the Estate will be distributed having regard only to the claims and interests of which they have had notice.

**DIXON ALDERTON LAW LIMITED,**  
 Prospero House, 4a Dormer Place, CV2 3AE

### Warwickshire County Council

**ROAD TRAFFIC REGULATION ACT 1984**  
 Warwickshire County Council has made the following Temporary Traffic Orders:

**PUBLIC FOOTPATH R252 IN THE PARISH OF WOLFHAMPTON**  
**Order Effect:** Footpath closed to all traffic at Grid Reference X450828 Y265376.  
**Reason for Order:** To avoid the likelihood of danger to the public because of a collapsed bridge along its route.  
**Order Commences:** 17 July 2025 for up to 6 months.  
**Access & Diversion:** Please take an alternative route using Public Footways/Rights of Way.  
**Contact:** WCC Rights of Way Team, Tel: 01926 412 909.

**Warwickshire County Council proposes to make the following Temporary Traffic Orders:**

**ABBEY STREET, RUGBY**  
**Order Effect:** Road closed to vehicular traffic.  
**Reason for Order:** To enable works to repair/replace defective manhole frame and covers.  
**Order Commences:** 1 August 2025 for up to 18 months.  
**Anticipated Completion:** 1 August 2025.  
**Access & Diversion:** Cambridge Street, Clifton Road, South Street, Abbey Street and vice versa.  
**Contractor:** Customer Solutions Plus, Tel: 07918 298 599.

**D22740 HILL ROAD, GRANDBOROUGH**  
**Order Effect:** Road Closed to vehicular traffic from Main Street to A426.  
**Reason for Order:** Tree removal and drainage works, 08.00hrs-17.00hrs.  
**Order Commences:** 28 July 2025 for up to 18 months.  
**Anticipated Completion:** 30 July 2025.  
**Access & Diversion:** A426, Flecknoe Road, Broadwell Road, Flecknoe Station Road, Sawbridge Road, Wiloughby Road, Grandborough Road, Sawbridge Road, Main Station and vice versa.  
**Contractor:** Balfour Beatty, Tel: 03452 415 302.

**DRAYCOTE ROAD, DRAYCOTE**  
**Order Effect:** Road closed to vehicular traffic from Main Street to Giebe Farm Road.  
**Reason for Order:** To enable meter renewal works.  
**Order Commences:** 31 July 2025 for up to 18 months.  
**Anticipated Completion:** 1 August 2025.  
**Access & Diversion:** Draycote Road, Main Street, Straight Mile and vice versa.  
**Contractor:** Chevron TM Ltd, Tel: 03300 080 820.

**FLECKNOE ROAD, LEAMINGTON HASTINGS**  
**Order Effect:** Road closed to vehicular traffic.  
**Reason for Order:** To enable works on the water network.  
**Order Commences:** 31 July 2025 for up to 18 months.  
**Anticipated Completion:** 1 August 2025.  
**Access & Diversion:** Hayway Lane, Main Street, Hospital Lane, Southam Road and vice versa.  
**Contractor:** Chevron TM Ltd, Tel: 03300 080 820.

**WEST STREET & MAIN STREET, LONG LAWFORD**  
**Order Effect:** Road closed to vehicular traffic.  
**Reason for Order:** Access to telegraph pole(s) to provide fibre overhead cabling for customer supply.  
**Order Commences:** 1 August 2025 for up to 18 months.  
**Anticipated Completion:** 1 August 2025.  
**Access & Diversion:** Main Street, Cross Street, Chapel Street, Railway Street and vice versa.  
**Contractor:** Sunbelt Rentals Ltd, Tel: 03700 500 792.

For all of the above temporary orders, pedestrian access to and egress from properties and land situated adjacent to the length of road to be closed will be maintained at all times. Vehicular access will be maintained where possible.

**To report any problems with these works or for further details of our current & planned roadworks visit our website warwickshire.gov.uk/roadworksmap or call us 01926 412515.**

**S Duxbury, Director of Strategy, Planning & Governance, Shire Hall, Warwick CV34 4RL Date 11 July 2025**

**Licensing Act 2003 NOTICE OF APPLICATION FOR GRANT OF A PREMISES LICENCE UNDER THE LICENSING ACT 2003**

**Food Philosophy Ltd Unit 3 47-48 Chapel Street Rugby CV21 3EB** Notice is given that on 3 July 2025, Food Philosophy Limited applied to Rugby Borough Council for the grant of a Premises Licence under the Licensing Act 2003. The licensable activities and hours are: Sale of alcohol (On sales) Mon-Sun 11.30 - 22.30. Anyone who wishes to make representations regarding this application must give notice in writing to Chief Officer of Regulation and Safety, Rugby Borough Council, Town Hall, Rugby CV21 2BR. Representations must be received no later than 1 August 2025. The Licensing Authority's Register may be viewed during normal office hours at the above address. It is an offence under Section 158 of the Licensing Act 2003, to knowingly or recklessly make a false statement in connection with an application. The maximum fine for which a person is liable on summary conviction for the offence is up to level 5 on the standard scale (unlimited).

## PUBLIC NOTICES

### Warwickshire County Council

**ROAD TRAFFIC REGULATION ACT 1984**  
 Warwickshire County Council has made the following Temporary Traffic Orders:

**THE NOOK, PRIORS MARSTON**  
**Order Effect:** Road closed to vehicular traffic.  
**Reason for Order:** Works for boundary box installation.  
**Order Commences:** 17 July 2025 for up to 18 months.  
**Anticipated Completion:** 18 July 2025.  
**Access & Diversion:** No diversion available.  
**Contractor:** Chevron Traffic Management Ltd, Tel: 03300 080 820.

**Warwickshire County Council proposes to make the following Temporary Traffic Orders:**

**WULESTAN DRIVE, LONG ITCINGTON**  
**Order Effect:** Road closed to vehicular traffic.  
**Reason for Order:** Works to repair small water pipe.  
**Order Commences:** 30 July 2025 for up to 18 months.  
**Anticipated Completion:** 1 August 2025.  
**Access & Diversion:** No diversion available.  
**Contractor:** Chevron Traffic Management Ltd, Tel: 03300 080 820.

**MODEL VILLAGE, LONG ITCINGTON**  
**Order Effect:** Road closed to vehicular traffic.  
**Reason for Order:** Works to connect to electricity supply.  
**Order Commences:** 28 July 2025 for up to 18 months.  
**Anticipated Completion:** 31 July 2025.  
**Access & Diversion:** No diversion available.  
**Contractor:** Network Plus, Tel: 08081 642 252.

For all of the above temporary orders, pedestrian access to and egress from properties and land situated adjacent to the length of road to be closed will be maintained at all times. Vehicular access will be maintained where possible.

**To report any problems with these works or for further details of our current & planned roadworks visit our website warwickshire.gov.uk/roadworksmap or call us 01926 412515.**

### THE WARWICKSHIRE COUNTY COUNCIL PROPOSED CONVERSION OF FOOTWAY TO SHARED USE FOOTWAY/CYCLE TRACK AT A425 LEAMINGTON ROAD, C210 BANBURY ROAD AND A423 SOUTHAM BYPASS, SOUTHAM

**PROPOSED INSTALLATION OF SHARED USE FOOTWAY/CYCLE TRACK ON A423 SOUTHAM BYPASS, SOUTHAM**  
 Warwickshire County Council proposes to:

Reduce the existing National Speed Limit on the A423 Southam Bypass, Southam, to 50mph, on the length of road described in Schedule 1 below;

Convert existing sections of footway into a shared use footway/cycle track for use by pedestrians and cyclists on the northern side of the A423 Southam Bypass, A425 Leamington Road and C210 Banbury Road over the lengths of roads described in Schedule 2 below; and

Construct a shared use footway/cycle track for use by pedestrians and cyclists on the southern side of the A423 Southam Bypass over the length of road described in Schedule 3 below.

A copy of this notice, the proposed Order, a statement of the Council's reasons for these proposals and plans showing the location of the proposals, can be inspected at Warwickshire County Council, Shire Hall, Market Place, Warwick during usual opening hours and are available to view on the website at: [www.warwickshire.gov.uk/news/20209/stratford-avon-district](http://www.warwickshire.gov.uk/news/20209/stratford-avon-district).

Any enquiries relating to the proposals may be made to Mark Salt, Communities Directorate, Warwickshire County Council (marksalt@warwickshire.gov.uk).

Any objections to or representations in support of the proposals, which must be in writing and specify the grounds on which they are made, should be addressed to Mark Salt, Communities Directorate, Shire Hall Post Room, Northgate Street, Warwick, CV34 4SP or via email to [s278tamenquiries@warwickshire.gov.uk](mailto:s278tamenquiries@warwickshire.gov.uk) using the reference "S278 A423 Southam Bypass (Alit)". (Objections, representations, and the name of the objector or person making a representation, will normally be treated as public information and may be published. For further information on how Warwickshire County Council processes personal data please refer to the Customer Privacy Notice which is available at <https://www.warwickshire.gov.uk/privacy>).

Objections and representations must be sent so as to be received by 4th August 2025.

**SCHEDULE 1**  
**PROPOSED 50MPH SPEED LIMIT (CURRENTLY NATIONAL SPEED LIMIT)**

(i) A423 Southam Bypass, Southam

From a point 78 metres north-east of the centre of the A423 Southam Bypass/A425 Leamington Road Roundabout to a point 104 metres south-west of the centre of the A423 Southam Bypass/Davenry Road Roundabout (a total distance of 828 metres).

**SCHEDULE 2**  
**S65/66 HIGHWAYS ACT 1980**  
**PROPOSED CONVERSION OF EXISTING FOOTPATH TO SHARED USE FOOTWAY/CYCLE TRACK**

(i) A423 Southam Bypass (Northern side)

On the northern side, from a point 28 metres northeast of the centre of the A425 Leamington Road/A423 Roundabout, in a northeast direction for 51 metres.

(ii) A425 Leamington Road

On the eastern side, from a point 28 metres northeast of the centre of the A425 Leamington Road/A423 Roundabout, in a northeast direction for 74 metres.

(iii) C210 Banbury Road

On the southern side, from the southeast corner of the bellmouth junction with A425 Leamington Road, in an easterly direction for 25 metres.

**SCHEDULE 3**  
**S65 HIGHWAYS ACT 1980**  
**PROPOSED CONSTRUCTION OF SHARED USE FOOTWAY/CYCLE TRACK**

(i) A423 Southam Bypass (Southern side)

On the southern side, from a point 58 metres east of the centre of the A425 Leamington Road/A423 Southam Bypass Roundabout, in an easterly direction for 182 metres.

**S Duxbury, Director of Strategy, Planning & Governance, Shire Hall, Warwick CV34 4RL Date 11 July 2025**


## PUBLIC NOTICES

**IRENE MYRTLE WALTERS (Deceased)**

Pursuant to the Trustee Act 1925 any persons having a claim against or an interest in the Estate of the above named, late of 26 Bromleigh Drive Coventry, CV2 5LX, who died on 09/06/2025, are required to send written particulars thereof to the undersigned on or before 12/09/2025, after which date the Estate will be distributed having regard only to the claims and interests of which they have had notice.

**DIXON ALDERTON LAW LIMITED,**  
 Prospero House, 4a Dormer Place, CV2 3AE

## PUBLIC NOTICES



Keeping you up to date with all the latest information on

**Planning Proposals, Traffic Notices, Goods Vehicle Operator Licences, Licences To Sell Alcohol, Probate Notices.....**

## Check out our E-Editions!



[www.coventryobserver.co.uk/editions](http://www.coventryobserver.co.uk/editions)

[www.rugbyobserver.co.uk/editions](http://www.rugbyobserver.co.uk/editions)

[www.leamingtonobserver.co.uk/editions](http://www.leamingtonobserver.co.uk/editions)

The same paper you love

on your **mobile, tablet and computer**

# Classified

TELEPHONE 01527 588688 FACSIMILE 01527 584371

## SALES & WANTS

### MISCELLANEOUS

**BEDS NEW** Doubles £95 Singles £59 King size £159. Second hand doubles £49 Singles £29 Fridges £49 Freezers £59 Can deliver 07703 925662

**RECLINER CHAIR** electric rise & recline £169 Manual recline chair £60 High seated chair £40 Can deliver 07703 925662

**TRUNDLE** day bed. Black metal frame with two mattresses £150 ono. 01455 558823 or 07901644028

**DOUBLE** Mattress, new, unused £100 Tel: 07761 593447

**LADIES Dress Ring** Size O, Silver plated with small blue zircon stone. Never been worn at all. £5. Tel: 07733 628986

**LADIES Dress Ring** Size O, Rose Gold plated with small red ruby stone. Never been worn at all. £5. Tel: 07733 628986

### MISCELLANEOUS

**LADIES Dress Ring** Size O, Rose Gold plated with small red ruby stone. Never been worn at all. £5 Tel: 07733 628986

**NIKE Air MX-720-818** Trainers. White Indigo Fog, UK Size 4, hardly worn, £30. Tel: 0121 742 2513

**3-BIKE** rear carrier rack (Auto Care). Still in wrapper, £20. Phone after 6pm 0121 742 4250

**TWO** Abbey light oak, double door wardrobe with three drawers. Measurements: 180cm height, 72cm width, 52cm depth. Drawer in e a s u r e m e n t 65cm wide for one drawer, 32cm wide for the two drawer, 52cm depth. Each wardrobe for £35, or two for £60. Tel: 07721 197331

**SJP** Born Lovely 50ml EDP and 10ml EDP handbag size, new! £12 Tel: 07813 706 158 (Shirley area)

### MISCELLANEOUS

**COMPUTER** desk in dark walnut with keyboard tray. Home office furniture with wheels. Height 72cm, width 55cm, depth 45cm. £15. Tel: 077211 97331

**MANUAL** Singer Vintage sewing machine. Good and working condition. Sewing machine with new belt. £60 ono. Tel: 077211 97331

**LEFT** hand chaise lounge, brand new, plush grey sofa. £325 ono. Tel: 077211 97331

### WANTED

**\*\*WANTED: Vinyl Records CDs Cassettes Vintage or New\*\***  
Seeking classic rock, jazz, indie and rare finds. Cash paid  
Call or text: 07765 142354 Or 01527 893992  
Or email: welston@live.com  
Paul (Albatross & Doomed Records)

### MISCELLANEOUS

**LADIES** navy / white Phase Eight shorts, size 12, £3. Tel: 07813 706 158 (Shirley area)

**ADIDAS** Cloudfoam pink / white comfort trainers, size 8.5, brand new! £25. Tel: 07813 706 158 (Shirley area)

**JANE** Norman black / white dress, size 10, brand new! £20 Tel: 07813 706 158 (Shirley area)

**BLACK** flat lace-up ladies espadrilles, size 8 / 41, new! £10 Tel: 07813 706 158 (Shirley area)

### CONSERVATORIES & GLAZING

**DOUBLE GLAZING REPAIRS**  
Locks, Hinges, Handles, Glass, Windows or Doors  
New Doors/Windows Also Supplied/Fitted  
**07973 200 623**

### DRIVEWAYS

**COVENTRY DRIVEWAYS**  
• Block paving • Slabs • Porcelain Tiles & Sandstone Kils  
• Fencing • Gravel • Turf & Artificial Grass  
• Decking, Steps and more  
**7 Years Warranty on all projects**  
Payment only after completion  
**02476 274439 07740 101227**  
www.spanglefish.com/coventrydriveways



## SERVICES

### GARDENING SERVICES

**STUART'S GARDENING SERVICES**  
Landscaping & Tree Surgery  
Fencing, Slabbing, Turfing, Block Paving, Bases, Mowing, Decking, Roofing and Guttering.  
Mini-digger/Dumper  
Fully Insured. Registered carrier of waste.  
**FREE ESTIMATES**  
**02476 305992 • 07813 790889**  
**01788 211064**  
www.stuarts-gardening-services.yolasite.com

### HOME IMPROVEMENTS

#### HANDY MAN

If you're looking for a fast and reliable service  
Then call Lenny  
• Plastering • Plumbing • Fencing  
• Gardening • Flooring • Kitchens  
• Bathrooms • Carpentry • Flat pack furniture  
• Tiling • Painting  
**02476 443 996**  
**07794 784 266**  
**NO VAT CHARGE**

### KITCHENS

**S.W INSTALLATIONS**  
**Kitchens & Bathrooms**  
**FREE DESIGN & QUOTATION**  
**QUALITY KITCHENS & BATHROOMS SUPPLIED & FITTED**  
**PLUMBING, CARPENTRY, TILING, WORKTOP & DOOR REPLACEMENT**  
(Supply & fit, supply only or fit only)  
**LOCAL TRADESMAN**  
**20YRS EXPERIENCE**  
**NO JOB TOO SMALL**  
**01926 773386 or 07971 684 353**

**SOMETHING to sell?**  
You Can Raise Some Extra Cash and make someone else's Day  
By SELLING Your Wonderful but Unwanted Gifts or Private Items  
Simply by advertising them in The **Observer** or **The Standard**  
And... If your item is valued at £500 or less – its FREE of charge in lineage (max 15 words)  
But if you want your advertisement to really stand out or if your item is valued at over £500, you can place details in a boxed advertisement for just £5.75 (inc Vat)  
Simply fill in the coupon below, tick the appropriate box, enclose your cheque or credit card details if required, and we'll do the rest - Or alternatively email your free ad to: [freeads@bullivantmedia.com](mailto:freeads@bullivantmedia.com)

**3 PIECE SUITE**  
brown leather,  
perfect  
condition  
as new  
**£550**  
can deliver  
Telephone  
**10234 567890**

(£5.75 incVAT example boxed advertisement)

Free Lineage (Items upto value £500)  Paid for Boxed Ad (Items of any value)

Details of Item For Sale for Publication (No Pets or Livestock or Firearms please); (MAX 15 WORDS)

..... Telephone Number.....

Details (Not for Publication):  
Mr/Mrs/Ms..... Initials..... Surname.....  
Address.....  
Postcode..... Telephone:..... Mobile.....  
Email address.....  
I enclose cheque, payable to Bullivant Media Ltd, value £.....  
or alternatively  
Please debit my card for £..... Visa/Mastercard/Maestro/Delta  
Credit Card Number.....  
Exp Date..... Start Date..... Security Number..... (Last 3 digits) Issue Number..... (if applicable)

Send to Bullivant Media, Webb House, Church Green East, Redditch, Worcestershire. B98 8BP  
or email your advertisement to [freeads@bullivantmedia.com](mailto:freeads@bullivantmedia.com)

**CRS LTD**  
 Spring Lane South, Malvern WR14 1AT  
 ATF's are the **ONLY** legal way to scrap your vehicles  
**BUYERS**  
 of all SCRAP Metals and SCRAP Vehicles  
 The **ONLY** authorised treatment facility in Malvern!  
 Best Prices Paid • Collection & Skip Drops Farm  
 Equipment, Copper, Brass etc. • 50 Ton Weigh Bridge  
**LD REQUIRED - 01684 578081**  
 www.crs-malvern.co.uk

# Observer SPORT



9 772040 128006  
 Published by Bullivant Media Group Ltd, Webb House, Church Green East, Redditch, Worcestershire, B96 8BP  
 Printed by Newsquest, Newspaper House, Carney Mead, Oxford, Oxfordshire, OX2 0EJ

**VINYL RECORDS WANTED**  
 Buying since 1978  
 Get your cash TODAY!  
 I will come to you  
**Phone PAUL**  
**01527 893992 | 07765 142354**

www.rugbyobserver.co.uk BRINGING YOU ALL THE LATEST SPORTS NEWS AND VIEWS FROM THE AREA

## Cave qualifies to play at The Open

**GOLF:** SEB Cave described qualifying for next week's Open Championship as 'surreal'.  
 The Warwickshire county golf player finished fourth in a 72-strong field at Royal Cinque Ports in Kent to earn his place at The Open.  
 He shot five under par (-5) across 36 holes to finish ahead of professional players Ian Poulter, Matthew Southgate and Peter Uihlein.  
 The Open takes place from Thursday, July 17 to Sunday, July 20 at Portrush in Northern Ireland.  
 Cave said: "It's a surreal feeling, it's not sunk in yet."  
 "It may have exceeded expectations a little, but you're going there to qualify."  
 "To get through with the way I played, it was surreal to pick up a flag and a player tag."



Seb Cave has qualified to play at the Open Championship. s

"It has to be up there as my best achievement."  
 "Representing England Golf, and also Great Britain and Ireland has been great, but this probably tops it."  
 "The number one player in the world Scottie Scheffler, he'd be a standout name I'd love to play with, and obviously Rory McIlroy."  
 "I'd love to try and out-drive Bryson DeChambeau in one of the practice rounds too."  
 "It'd be nice to play with some of the big names but I'm going there to do a job and try and get a finish that I know I'm capable of and deserve."  
 "I don't really have any expectations - the goal is the Silver Medal [for being the top amateur]."  
 The 21-year-old plays out of Coxmoor Golf Club in Nottinghamshire.

## Valley beat Bards as key players commit to club

**FOOTBALL:** GRANT Joshua tasted victory in his first game in charge of Rugby Town following a 2-1 win away at Stratford Town.  
 Valley upstaged their Step Three opponents to begin pre-season in style as Callum Griffin and Olly West both found the net at the Arden Garages Stadium.  
 Only four players from last season's squad featured of the 18 selected for the fixture.  
 Stratford broke the deadlock on 37 minutes after a defensive mix-up allowed Cyrus Bruce through on goal.  
 However, Ben Newey made a fine save only for Ryan Hayes to turn home the rebound.  
 Rugby drew level two minutes before half time as Cairo Taylor squared the ball to Griffin who made no mistake following a blistering counter attack.  
 And Griffin then teed up West for the winning goal on 65 minutes as the latter headed home the former's corner from close range.

### TRIO TO STAY

Valley were handed a boost prior to their first pre-season friendly with Caine Elliott, Josh Thomas and Harrison Nee all agreeing to stay with the club for the 2025/26 season.  
 Elliott and Thomas have both signed one-year deals at Butlin Road after previously deciding to move on following the club's relegation last term.  
 And Nee will also remain with Valley after the club received a belated reprieve from relegation to remain in the Northern Premier League Midlands next season.  
 Thomas and Elliott have made more than 270 appearances for Valley between them over the past six years.  
 And former Coventry City academy player Nee has also signed on for the 2025/26 campaign after almost ending his 15-month spell at Butlin Road.

# CASHBROKERS

LEAMINGTON SPA

PAWNBROKING LOANS  
 SCRAP GOLD & SILVER  
 BUY BACK  
 JEWELLERY & WATCHES  
 COINS & BULLION

01926 258252

144 Parade, Leamington Spa, CV32 4AG  
[www.cashbrokersleamingtonspa.co.uk](http://www.cashbrokersleamingtonspa.co.uk)

## CASH PAID

### FOR GOLD, SILVER, COINS & BULLION

