

**WANTED**  
**Motorcycles and Scooters**  
 Any cc, condition or age,  
 good prices paid  
 07944 781 933 | 01926 257 643

Friday, August 8th 2025 Week 32

 facebook.com/rugby.observer

rugbyobserver.co.uk

 @rugbyobserver t: 01926 451900

Your **FREE** edition - just pick one up and keep up with the news

# New deal set to bring life-saving kit to more

by **Andy Morris**  
 andy.morris@bullivantmedia.com

THE TIRELESS work of a Rugby mum to bring life-saving equipment to the streets in memory of her son has been boosted by a partnership with a media company.

Naomi Rees-Issitt's charity the OurJay Foundation has struck an agreement to install publicly accessible defibrillators at Virgin Media O2 stores.

New OurJay Foundation defibrillator cabinets have now been installed outside the O2 stores in Rugby and Nuneaton, alongside Daniel Baird Foundation bleed control kits which can be used to save lives in an emergency.

The company started installing defibrillators in all its stores in 2020 - but until now, all of them were inside the stores, meaning they were only accessible during opening hours.

Naomi set up the charity following the tragic death of her 18-year-old son Jamie Rees from a cardiac arrest in the early hours of New Year's Day 2022. Despite a defibrillator being located nearby, it was inaccessible.

Since then, Naomi has worked to supply public access defibrillators to try and prevent the same tragedy happening to other families.

She said: "Sadly, the nearest defi-



Naomi Rees-Issitt (third from right) celebrates the installation of the new defibrillator at the Rugby O2 store, with staff members (left to right) Sam, Caleb, Pooja, Jay and Avnish.

brillator to where Jamie collapsed was locked inside a school, meaning it could not be accessed by the bystanders trying to save his life.

"Cardiac arrest can happen to any-

one, anywhere, any time, so 24/7 accessible defibrillators are vital in improving the survival rate.

"We look forward to continuing our work with Virgin Media O2 in

this life saving project to ensure more defibrillators can be made 24/7 publicly accessible.

"We are so grateful for the support they have given us."

The defibrillator cabinets are registered on 'The Circuit' - the UK's national defibrillator network - meaning that when someone calls 999, emergency service operators can direct people to them quickly. Since January 2023, Virgin Media O2 defibrillators registered on The Circuit have been used in at least 16 cardiac emergencies.

Alison Fanthom, Head of Infrastructure at Virgin Media O2, said: "We're proud to have rolled out defibrillators to every O2 store and hundreds of Virgin Media vans, putting live-saving equipment onto streets up and down the country."

"Through our partnership with OurJay Foundation, we're now taking this a step further and doing what we can to make our defibrillators even more accessible so we can save even more lives."

The OurJay Foundation has now installed over 270 defibrillators and saved at least 20 lives across the region. The charity also provides training in life-saving resuscitation skills. Visit [www.ourjay.org.uk](http://www.ourjay.org.uk) for more information.



Tel: 0800 3032559  
 Mob: 07773 911552  
[www.drives4u.co.uk](http://www.drives4u.co.uk)

**Are you looking to improve or enlarge your driveway or patio?**

We can provide you with a beautiful new patio or driveway in Coventry, Bromsgrove, Redditch, Solihull, Leamington, Kidderminster and Birmingham

**5 Year guarantee**

- We've designed and built just about every shape and size of driveway and patio you can imagine, so we will not be phased by your project.
- We strive to achieve 100% satisfaction and unlike other driveway companies, with us you pay absolutely nothing upfront.
- Give us a call and you could save upto £1000



**Tel: 0800 3032559 | Mob: 07773 911552 | [www.drives4u.co.uk](http://www.drives4u.co.uk)**

**Championing the needs of Rugby residents since 1991 and delivering the news to you every week**



The concept design was revealed to the public for the first time at the weekend. It has been designed with the help of 20 dedicated user groups and a consumer focus group of 500 people.

# First look inside the concept design for new HS2 carriages

by Ian Hughes  
ian.hughes@bullivantmedia.com

**HS2 has revealed what the interior of its trains could look like for the first time.**

Rail enthusiasts heading to Alstom's The Greatest Gathering event in Derby at the weekend had the first opportunity to see the concept designs for HS2's Class 895 trains.

As part of the rail exhibition, focused on the future, visitors were given the opportunity to book a tour of a life-size model carriage fitted out to illustrate the potential design of the high speed train.

James Dawson, HS2 Ltd's senior rolling stock engineer, said: "We've dedicated time and energy into understanding what matters most to people when they travel by train, and by listening and acting on feedback we can be confident that our interior designs will meet and exceed passengers' needs."

"These trains will run across Britain on high-speed and conventional lines for decades to come, so it's important we get the fundamental design right, not just for today but also for the future."

The public has played a major role in shaping the initial design concepts. Twenty dedicated user groups and a consumer focus group of more than 500 people have helped to inform the passenger experience.

New design features aim help to ensure the train



will be accessible for all. Step free access at new HS2 stations, audio announcements and visual display screens in the toilet cubicles are among the features included.

HS2 say customers travelling with mobility aids will also have greater freedom to select their seat and wheelchair users can expect equal provisions as found at all other seating on the train.

Other design features include a seat pitch with more leg room than any other standard class UK trains, more overhead and beneath-the-seat luggage storage, baby changing tables, clothing/bag hooks and a pull-down child seat in toilet cubicles. There are also saloon seats with drop-down tray table and a separate shelf to stand phones on when viewing video content, multiple power and charging options including three pin plugs and USB-C, and redesigned horizontal bike storage to make it quicker and easier for cyclists to board and alight. But when passengers will

actually get to experience travelling on the line between London and Birmingham remains unclear after the government confirmed the opening of HS2 would be delayed beyond the target date of 2033.

Transport Secretary Heidi Alexander vowed in June to address years of mismanagement and restore public trust in the highly controversial line.

A recent government commissioned report sets out evidence of the historic mishandling of the line including a lack of ministerial oversight and scrutiny, inadequate control of the project by HS2 Ltd and a lack of effective incentives with the supply chain, which will collectively cost the taxpayer billions more than planned.

Some 54 kilometres of the 190km track will cut through the heart of Warwickshire, with a new station also being built near Birmingham Airport. Swathes of the county's landscape has already been transformed by work on the line.



**Kenilworth Tennis Squash & Croquet Club**

Crackley Lane,  
Kenilworth CV8 2JS

☎ 01926 852673

**Open 7 days a week**

Beginners courses – Coaching  
Social play – Mix ins  
Competitions – Juniors  
Club nights – Social events

**Affordable plans !**

- Pay monthly
- Pay annually
- Pay and play!

**JOIN US !**

- Tennis
- Padel
- Squash
- Croquet
- Cafe/Bar

Family Oriented  
All Welcome  
Ample free parking

Make lasting friendships  
and memories !

🌐 [www.ktscc.co.uk](http://www.ktscc.co.uk)

✉ [membership@ktscc.co.uk](mailto:membership@ktscc.co.uk)

PUBLIC NOTICES

For all your latest information on  
Planning Proposals, Traffic Notices,  
Goods Vehicle Operator Licences,  
Licences To Sell Alcohol and Probate Notices...

See  
page  
**28**




# Council offers business rates subsidy to boost town centre

**MORE than 100 businesses in Rugby town centre are set to benefit from a major subsidy of business rates during this financial year.**

The one-year subsidy, funded from Rugby Borough Council's (RBC) town centre reserve fund, applies to independent town centre businesses in the retail, hospitality and leisure industries with a rateable value of £51,000 or less – an estimated 107 businesses.

Combined with a government subsidy, businesses could slash their rates by up to 57.5 per cent, depending on how long they have traded in the town centre.

The government's Retail, Hospitality and Leisure (RHL) sector business rate relief, which began in 2020, is reducing from 75 per cent to 40 per cent this year.

The maximum amount of borough council subsidy will be up to 50 per cent of the value of the relief that is

by **Andy Morris**  
andy.morris  
@bullivantmedia.com

being withdrawn, and will apply in the 2025-26 financial year.

Funding will depend on the business remaining in the town centre for the full year and will be applied in the form of a credit, which would be removed should the business close or relocate.

RBC leader Coun Michael Moran said: "This is an important step in our regeneration plan for Rugby town centre. Many of our local businesses have lived through more than 20 years of promises of various plans and strategies to improve the look and feel of the town.

"I believe there needs to be a true partnership going forward and, before announcing investment plans to bring in new businesses to the town, it is important therefore we first recognise the faith and

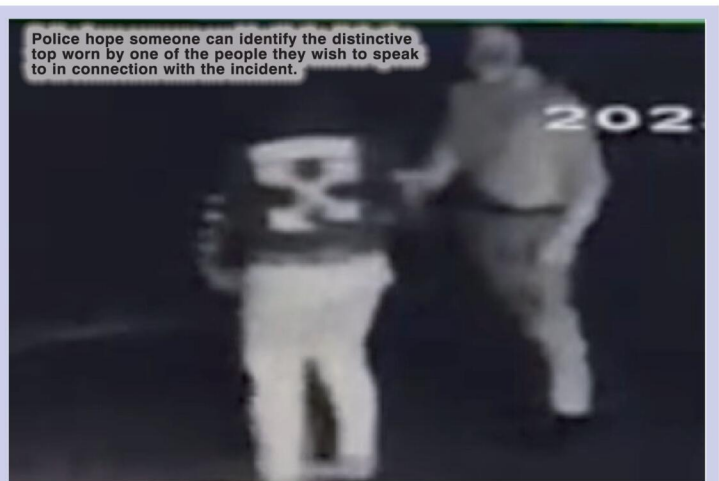
loyalty shown by our existing businesses."

Coun Moran said the council's adoption of the government's High Street Rental Auctions powers to bring empty units back into use was evidence that it was making 'small but determined steps in the right direction' to help the town centre.

He added: "This business rates subsidy will offer targeted and effective relief to town centre businesses for the rest of the financial year and, in tandem with further announcements to come, can look to improve confidence in our town."

Coun Jerry Roodhouse, Leader of the Liberal Democrat Group on Rugby Borough Council, added: "This scheme has come about by joint working with the administration to help support local businesses in the town centre as well as Rugby-based independents.

"We must all remember to shop local as well."



Police hope someone can identify the distinctive top worn by one of the people they wish to speak to in connection with the incident.

## 40 cars damaged by vandals

**VANDALS damaged 41 cars in Rugby during an overnight spree last weekend.**

Cars parked in Saunton Road, Westbourne Grove and Wentworth Road in Overslade had their windows smashed and were sprayed with green paint between 12am and 2am on Sunday (August 3).

Ch Insp Angus Eagles, policing commander for the Rugby area, said: "This incident has understandably caused

a lot of anguish in the local community, and we have launched a thorough investigation to identify those responsible and bring them to justice.

"One of the people we would like to speak to was wearing a distinctive top which we believe to be the Off White brand. We're hoping someone can help us identify the owner. Our CCTV enquiries are ongoing.

"We're continuing our enquiries and

appeal for anyone with CCTV, dash cam or doorbell footage from the area around the time of the incident to get in touch with us." Visit <https://tinyurl.com/yucta87n> or call 101 to report information to police.

Alternatively, call Crimestoppers anonymously on 0800 555 111. Crimestoppers pays a reward of up to £1,000 for information which leads to one or more person being arrested and charged.

## New bus service between towns

**THE FIRST** regular bus service linking Rugby and Nuneaton has been launched.

The new Service 84 – and its variant 84A – serves key locations including St Cross Hospital, Rugby High School and Bilton High School, as well as villages between the two towns.

It also marks the first regular bus connection for the villages of Withybrook and Barnacle.

Service 84 operates between Nuneaton and Rugby, calling at George Eliot Hospital, Bedworth, Bulkington, Barnacle, Shilton, Ansty Business Park, Brinklow, Easenhall, Elliot's Field Retail Park, and Rugby town centre, ending at St Cross Hospital.

The 84A variant provides an alternative route between Bulkington and Elliot's Field via



Services 84 and 84A will carry bus passengers from Rugby to Nuneaton.

Withybrook, Monks Kirby and Pailton.

Warwickshire County Council leader Coun George Finch said: "For the first time, we're establishing a regular bus link between Rugby and Bedworth/Nuneaton,

opening up vital access to hospitals, schools, and employment hubs like Ansty Business Park.

"This service will be transformative for many communities, making travel more accessible and sustainable."

## Pedestrians seriously hurt in incident

**TWO** pedestrians were seriously injured after being hit by a car.

Police are appealing for witnesses and information after an older blue Peugeot was in collision with two pedestrians on Lawford

Lane, near the junction with Main Street in Bilton, at around 2.40pm on Friday August 1.

The two pedestrians suffered serious leg injuries and were taken to hospital for further assessment and

treatment.

Anyone who witnessed the collision or has any CCTV, dashcam or doorbell footage is asked to call police on 101 quoting incident number 187 of August 1.

Open every weekend plus Wednesdays during

## SUMMER SCHOOL HOLIDAYS

**TRANSPORT MUSEUM WYTHALL**

**A great day out for just £8.00 adult £4.00 children (over 5)**

**Open 10.30am to 4.30pm**

- Free open top bus rides**
- Bouncy Castle**
- Miniature train rides**
- Picnic and Play Areas**
- Cafe, Burger Van and Shop**

**Don't forget Bank Holiday Sunday and Monday. Visiting Buses and Enthusiasts Sales Stands**

**Adults £12.00**  
**Child (5-16 yrs) £6.00**  
**Family £20.00 (1 Adult + 2 Children)**  
**Family £30.00 (2 Adults + 2 Children)**

Registered charity 1167872

Transport Museum Wythall, Chapel Lane, Wythall B47 6JA

★ We're just off M42 Junction 3, near to Becketts Farm ★

Website: [www.wythall.org.uk](http://www.wythall.org.uk) Email: [enquiries@wythall.org.uk](mailto:enquiries@wythall.org.uk)

# Pride marchers vow to stand up against hate

**WARWICKSHIRE Pride will be flying the rainbow flag in Leamington next weekend.**

by Philippa Mingins

The annual celebration of lesbian, gay, bisexual and transgender (LGBT+) life and culture, returns to the Pump Room Gardens on Saturday August 16.

This year's festival theme is Rise with Pride reflecting rising hate towards LGBTQ+ people, and especially trans communities, and a Pride March will start off the event

through the town centre. Visitors can expect more than 100 stalls in a rainbow marketplace, fairground rides for children and adults, food stalls, a bar serving alcohol and soft drinks, a trans tent, bi tent, youth tent, education tent, and live entertainment.

Headlining this year are noughties chart topping acts Big Brovaz and Booty Luv. Other acts include local drag stars Sassi Afrika and Mama

Tasty, local band Man Made Moon, and a performance by members of Warwickshire Pride's LGBTQ+ youth group.

Another addition is security on site overnight, following the festival site being trashed in homophobic attacks over the last two years. Last year, Pride flags were set fire to, gazebos destroyed, and broken glass spread around the site.

Warwickshire Pride's chair of trustees Daniel Browne



The rainbow flag will be flying in Leamington next weekend.

said: "The Warwickshire Pride festival is back and as always we are promising something bigger and better. Rooted in protest, but also celebrating LGBTQ+ life and culture, this year's festival is taking place against a backdrop of rising hate towards

LGBTQ+ communities. Whether it's the government attacking trans rights or hate crimes committed by local people, it is difficult being LGBTQ+ right now. That's why as well as celebrating our communities, we are also standing up to hate, rising

with Pride, and making it clear that we are not going to put up with what we are being subjected to."

Warwickshire Pride is a free festival and runs from 11am to 6pm.

Visit [www.warwickshirepride.co.uk](http://www.warwickshirepride.co.uk) for more details.



## Paddling pool ready to make splash after revamp

THE REFURBISHED paddling pool at Victoria Park in Leamington has reopened.

It has benefitted from a much-needed upgrade, including non-slip surfaces, improved pool surrounds, jets and fountains with free-standing shades, and benches around the outside for parents, creating a cleaner, safer environment for fami-

lies to enjoy. The refurbishment has been beset by some unforeseen delays with materials and parts, but the pool reopened on Saturday, July 26, and will be available throughout the rest of the summer holidays until September.

Warwick District Council's neighbourhood spokesperson Coun Will Roberts said: "We

really appreciate people's patience as we've worked to get the pool ready and open for the summer holidays. It's fantastic to be able to provide this fun, free, family-friendly facility in the centre of Leamington."

If visiting by car, parking for Victoria Park is available at Adelaide Bridge car park, St. Peter's multi

storey car park and Station Approach car park.

Due to the more complex nature of the construction of the St Nicholas Park paddling pool and ongoing challenges with onsite water levels, it will take a little longer to complete.

The paddling pool at Victoria Park is open for the rest of the summer holidays.



*Bank Holiday Afternoon Tea*

Celebrate the Bank Holiday in true English style with a delectable afternoon tea served in our elegant spaces or picturesque gardens.

1.30pm - 4.00pm

Monday, 25th August | £39.50 per person

*Acoustic Afternoons with Barton Hollow*

Immerse yourself in the magic of live music as these talented musicians bring warmth and harmony to the afternoon...

2:45pm - 5:00pm

July - September (Selected Sundays)

*A Taste of the Season*

**AN EXCLUSIVE DINING EXPERIENCE**

An elegant evening of Champagne, canapés, and a four-course tasting menu by Executive Head Chef Stu Deeley, paired with fine wines, celebrating the best of late summer's produce.

Starting at 6.00pm

Thursday, 11th September | £159.00 per person



Harbury Lane, Leamington Spa, CV33 9QB | [INFO@MALLORY.CO.UK](mailto:INFO@MALLORY.CO.UK) | T: 01926 330214

### Police in knife attack appeal

POLICE investigating a knife attack in Coventry are appealing for information.

West Midlands Police said in the early hours of Saturday July 12, a man was approached underneath the bridge in Fairfax Street, when he was slashed with a knife.

A man in his 40s was arrested and has since been charged with wounding and weapons possession.

He is due to appear in court next month.

Investigating officers are looking to speak to anyone who was in the area, or who might have doorbell or dashcam footage from the surrounding area at the time the assault took place.

Contact police on 101 quoting crime number 20/306356/25.

# Cannabis farm found in disused nightclub

**THE HEAD** of an organised crime group who posed as a property developer to run a cannabis farm at a disused nightclub in Coventry has been jailed for more than six years.

Roman Le, 38, from Birmingham, headed a gang who operated a multi-million pound network of at least eight cannabis factories staffed by illegal migrants across the Midlands, the North West and north Lincolnshire.

Le sourced the properties by buying or renting them, in some cases putting up scaffolding around the buildings to make it look like building work was taking place. a court was told.

Le worked with fellow gang members Yihao Feng, aged 29, from Manchester, and David Qayumi, aged 36, from Birmingham, to source and operate the properties.

by Andy Morris  
andy.morris@bullivantmedia.com

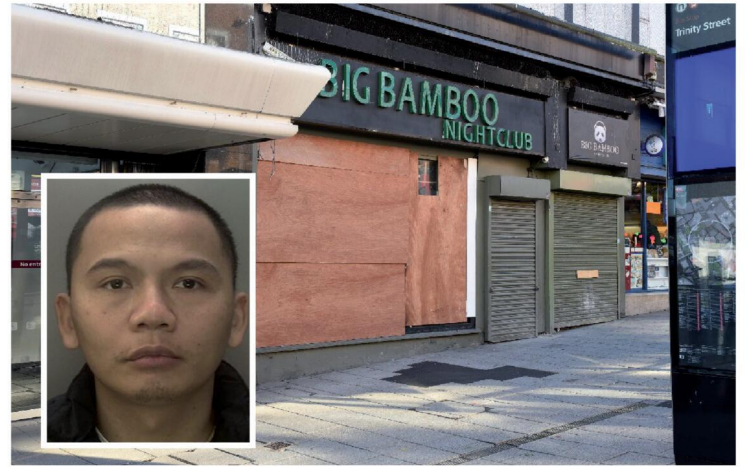
Among them was the former Big Bamboo nightclub in Coventry which police raided in 2020 after National Crime Agency (NCA) investigators watched Le visit the building.

They had to smash through several reinforced doors to get inside, where they found around 1,500 cannabis plants, worth more than \$1million, spread across three floors.

Officers also recovered sophisticated planting, growing and irrigation equipment, valued at around £150,000.

The electricity supply at the property had been bypassed, with the equipment inside directly and illegally connected to the commercial supply from the street outside.

Overall, the gang's farms were capable of making millions of pounds worth of



The former Big Bamboo nightclub where officers found 1,500 cannabis plants across three floors. Roman Le, inset, posed as a property developer to run the cannabis farm.

cannabis. Many of the farms were staffed by Vietnamese or Albanian illegal migrants, some of whom were likely being exploited because of their immigration status.

Qayumi posed as a businessman, working with Le to buy, rent or sub-let the properties, while Feng acted as an 'operations manager' for the group, making sure the factories kept working and that what was happening inside was kept a secret.

Le was arrested at his home in Essex Street, Birmingham, in November 2020.

Both Feng and Qayumi pleaded guilty to conspiring to produce cannabis, but Le denied the charge, claiming

he was a legitimate businessman who had no knowledge that the properties he had interests in were being used for cannabis grows.

He was found guilty following an eight-day trial at Birmingham Crown Court in June. He was sentenced on July 30.

In early July, Feng and Qayumi were handed prison sentences totalling six-and-a-half years.

NCA Senior Investigating Officer Paul Boniface said: "The cannabis factories operated by Roman Le's gang produced drugs worth millions, often staffed by migrants who had arrived here illegally and were being forced to work to

pay off their debt to people smugglers.

"He claimed to be a legitimate businessman, but in reality he was lining his own pockets off the back of the exploitation of others less fortunate than him.

"Working with policing partners we were able to target and dismantle this organised criminal operation, and those involved are now rightfully behind bars.

"Gangs like this are helping fuel an industry that sees people transported into the UK in life-threatening ways in boats or lorries, which is why taking action against them is so important for the NCA."

## OFTEN IMITATED BUT NEVER EQUALLED

### While all costs are going up - OURS ARE STAYING DOWN

Due to our customer friendly services of No Door Salesmen, No Showroom and little overheads



**NEW FLUSH WINDOWS**

**BEAUTIFUL COMPOSITE DOORS**  
Fully fitted  
**Competitive Prices**



## UPTO 30% OFF ALL WINDOWS



**ALL PRODUCTS HAVE A 10 YEAR INSURANCE BACKED WARRANTY**

# BILL MOORE'S WINDOWS AND DOORS

A NAME YOU CAN TRUST

1 Brookside Close, Stratford-upon-Avon, Warwickshire CV37 9PL

01789 415171 • 07729 689239 • [www.billmooreswindowsanddoors.co.uk](http://www.billmooreswindowsanddoors.co.uk)

# Felicity relives 50 years of help for Guide Dogs

**AN ANIMAL-LOVING former district council chairman and Kenilworth mayor has been honoured for her dedication to Guide Dogs after volunteering for 50 years.**

by Philippa Mingins

Felicity Bunker, who lives in Kenilworth, was chairman of Warwick District Council and twice mayor of her home town.

She started volunteering for the sight loss charity in 1975 as a puppy walker, known today as a puppy raiser.

Volunteer puppy raisers for Guide Dogs provide puppies with vital foundations for their future role, teaching them basic commands and helping them get used to different environments.

Each pup is looked after by their puppy raiser for just over a year, before they then move to a Guide Dogs' centre to start their formal training.

Felicity said: "There were two main reasons I signed up to volunteer for Guide Dogs. My gran had glaucoma and

was blind, so I was always interested in sight loss, even as a child.

"Secondly, I love all animals full stop, so the thought of volunteering with dogs was very appealing.

"At the time we had young children, and I was at home not working, so I had the time to sign up as a puppy walker, or puppy raiser as they are now known.

"Our first puppy was called Andy. I remember taking a bone from a local butcher to give to him when we went to see him training at the Exeter Training Centre."

Felicity's family looked after seven guide dog puppies in total, with five puppies qualifying as working guide dogs.

She continued: "It's been great doing it. We've had some successes, and we've had some failures with our pups.

"One of our puppies, Ulla, was featured on a Guide Dogs' television advert. He qualified as a working guide dog and

I'm still in touch with his guide dog owner – I hear from her every Christmas.

"Another one of our pups, Polo, was the cheekiest – I knew straight away that he wasn't cut out to be a guide dog.

"People would often ask how could you give them back – and I would say you part with them because you know they're not your dog and they are going on to do a wonderful job.

"You're still sad though – my husband used to bring me up a hot toddy the night before a pup was due to leave."

After Felicity and her family moved to Kenilworth, she resumed working and had to stop puppy walking.

She was asked to become an honorary member of Kenilworth Guide Dogs fundraising group, and soon signed up as their treasurer, a role which she still does today.

Felicity was presented with a long service award marking her 50 years of volunteering for the charity.



Felicity Bunker's dedication to Guide Dogs has been honoured.



**SIMPSON**  
FINANCIAL SERVICES

Thinking about *retirement?*

Get your finances in order with award-winning independent financial advice in Leamington Spa.

Book a free retirement planning consultation with one of our experts today!

☎ 0800 6342 111  
✉ office@simpsonfs.co.uk  
🌐 www.simpsonfs.co.uk

Find out more



Follow us    

## Officer arrested in rape investigation

A WARWICKSHIRE Police sergeant has been arrested on suspicion of rape.

An investigation began on Sunday July 20 after the incident was reported, and an arrest made two days later.

The officer has been released on bail with

conditions while enquiries continue. He has been moved to a non-public facing role.

A police spokesperson said: "As a force, we expect the highest standards from all our officers, staff and volunteers and where there are concerns

or allegations these aren't being met, our Professional Standards Department will investigate thoroughly.

"We are committed to being open and transparent around such processes and will share more information when appropriate."

# Director jailed for £300k fraud from business

A FINANCIAL director from south Warwickshire who used company credit cards to book luxury holidays to Florida and cruises has been sentenced to four years and seven months for fraud.

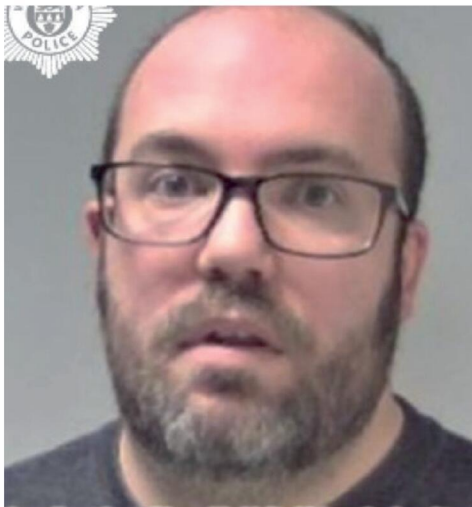
David Carr, of St Laurence Way, Bidford-on-Avon, pleaded guilty to three counts of fraud by abuse of position of trust between 2014 and 2022.

In total, the 34-year-old's fraud led to him benefitting to the tune of £300,000 over a period of eight years, supporting a lifestyle well beyond his means. It ultimately led to the Bromsgrove IT company where he was financial director going into administration.

As well as trips to Disney World, he also bought high value items such as computers, high-tech gadgets and designer exercise bikes.

Carr was sentenced to four years and seven months when he appeared at Worcester Crown Court. A Proceeds of Crime Act hearing is set to take place following his conviction.

An investigation into Carr's fraudulent gains started in August 2022 leading to his arrest two months later, and he was charged the following July.



As well as trips to Disney World, David Carr also bought computers, high-tech gadgets and designer exercise bikes.

PC James Hall, who led the investigation into Carr, said: "We are pleased to get this custodial sentence for Carr who abused his position of trust as the financial director of a company to fund a luxury lifestyle well beyond his means.

"Carr's eight years of stealing company money also led

to the firm he worked for going into administration, impacting the jobs of fellow employees too.

"Fraud can often be seen as a 'victimless crime' but the actions of criminals like Carr can have a big impact on companies, their customers and staff, which was certainly the case here."

## Police appeal after incident in park

POLICE are appealing for witnesses after two teenagers were inappropriately touched at a park in Leamington.

The 15-year-old girls were walking by the football fields at Newbold Comyn around 9.45pm on Saturday June 21 when two unknown men came up to them.

One of the men is reported to have touched the girls inappropriately over their clothing before both men left on foot across the field. The girls were left shaken but were uninjured.

The man, who is described as in his late

teens, around 6ft tall, with short black hair, was believed to be wearing a black short-sleeved T-shirt and dark-coloured knee-length shorts.

The second man, who was thought to be of a similar age but slightly shorter in height, was reportedly wearing a white T-shirt with short sleeves.

Sgt Lianne Aldridge said: "We've been pursuing a number of lines of enquiry as part of our ongoing investigation into this incident including speaking to the victims and collecting CCTV footage.

"We know there were

people in the park that evening and as it was the longest day of the year, we're hoping it might help to jog someone's memory who was there but may not have realised what was happening.

"If you witnessed the incident or perhaps saw the girls and the men, please share it with us. Any information, no matter how small, could be significant to our investigation."

Information can be given anonymously via Crimestoppers by calling 0800 555 111 quoting crime number 23/26351/25.

# Help Colour Your World

at the garden lovers' garden centre



www.farnboroughgardencentre.co.uk

A traditional garden centre that focuses on providing quality plants, garden products, homeware and gifts



PLANTED TUBS AND BASKETS



HERBACEOUS PERENNIALS



PATIO PLANTS



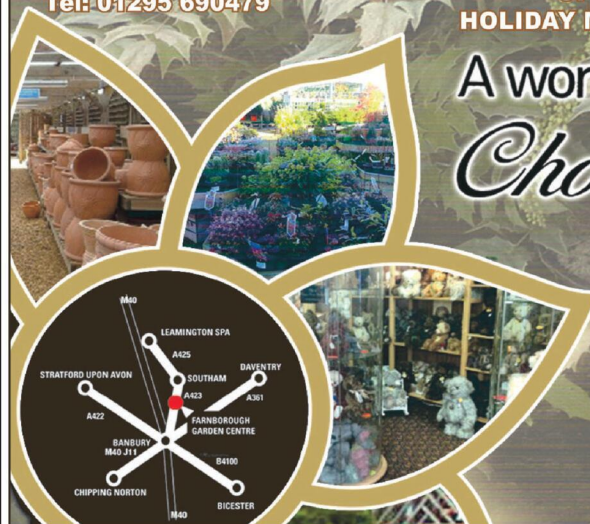
TEDDY LOVERS

Come & visit our Treasured Teddies shop & see our huge range of bears, Cuddly Collectables & furry friends including loveable limited editions and everyday huggables

On A423 Southam Road,  
Nr Farnborough,  
Banbury OX17 1EL  
Tel: 01295 690479

OPEN SIX DAYS A WEEK  
Tues-Sat 9-5.30  
Sun 10.30-4.30  
OPEN BANK  
HOLIDAY MONDAYS

A world of  
*Choice*



WHERE THINGS FOR YOUR GARDEN  
WON'T COST THE EARTH



Rugby Free Primary School pupils with their gardening tools and seeds.

## A growth in learning

THE FRUITS of Rugby schoolchildren's labour are growing over the summer holidays thanks to a donation of gardening equipment and seeds.

Rugby Free Primary School received the donation from housebuilder Barratt Homes, to help the school's outdoor learning opportunities to blossom.

Reception and Key Stage 1 children have used the equipment to create a vegetable bed in their outdoor learning spaces, where they are currently growing peas and tomatoes.

The school's Early Years Foundation Stage Lead, Aisling Armstrong, said: "We're really grateful for the opportunity that Barratt Homes have provided our children. "The gardening equipment will be used by

around 120 pupils in Key Stage 1, and after the success of the vegetable bed last term, we will look to extend this to other areas of the school as well.

"It is really important that all children can access hands-on experiences such as gardening to support their understanding of natural processes, and this is not something that all children have the luxury of doing within their home.

"Although the school is located on the edge of an industrial estate, we recognise the importance of outdoor learning and the value that interacting with nature and caring for the environment has for our pupils, and endeavour to incorporate this as frequently as possible into our children's school experiences."

# Another natural nursery success

A PASSION for the planet has won youngsters and staff at Nature Trails Day Nursery in Cawston another major environmental accolade.

The Coventry Road nursery has been awarded the prestigious 'Green Flag with Distinction' - part of the international Eco-Schools scheme - for the fifth successive year.

The accolade, which is the highest achievement in the programme involving children across 74 countries, recognises sustainable initiatives in nursery, which include growing herbs and vegetables to be used in homemade meals, crafting with natural and recycled materials, nature hunts and taking part in litter picking sessions around their local area.

With a focus on biodiversity, healthy living, nursery grounds and marine life as their key themes over the past year, Nature Trails were praised by Eco-Schools for their dedication, with celebrations including a Steve Irwin Day, gardening activities, sustainable improvements and their involvement with nursery families to extend learning opportunities at home.

Nature Trails also has its own dedicated Eco-Committee, which is made up of a number of pre-school children and staff who take a lead role in ensuring the rest of nursery is environmentally considerate by ensuring resources like paper are not wasted, taps are not left running, lights are switched off where not being used and that knowledge is shared.

Nature Trails spokeswoman Georgina Ross-Barnard said: "We are incredibly proud to have achieved the Green Flag with Distinction



for the fifth consecutive year. It reflects the hard work, enthusiasm and commitment of our children, colleagues and families in making sustainability a core part of everyday nursery life.

"At Nature Trails, we believe that fostering a love for nature and a sense of responsibility for the planet from an early age can have a lasting impact - and this award is a celebration of that."

**Eco-friendly - Nature Trails Day Nursery was awarded the 'Green Flag with Distinction' for a fifth successive year.**

## INTERNATIONAL METALS & CABLE RECYCLING LTD

We purchase all Ferrous and Non Ferrous Metal Batteries and Cables

Collection Service Available

Long Marston Road, Long Marston, Stratford Upon Avon, Warwickshire, CV37 8AQ

01789 721 288

david@imrltd.co.uk

Open Mon/Fri - 8am - 5pm

# City could soon be on the road to a greener future

INNOVATIVE eco-friendly road surfaces are set to be laid in Coventry.

The city is to test the low-carbon materials in Broad Lane from the A45 to Farcroft Avenue, and Willenhall Lane from Langbank Avenue to Deerdale Way.

It is part of a wider £4million trial across the region to learn how to maintain roads in a more environmentally friendly way.

The materials include graphene-enhanced asphalt which is designed to be longer-lasting and reduce maintenance costs; biogenic binders made from plant-based sources, which offer a lower-carbon alternative to traditional bitumen; and carbon-negative aggregates, which help to offset carbon emissions from construction.

The trials will generate data on how the materials perform, their carbon footprint, and their cost implications - supporting other local authorities across the UK to make informed choices as they work towards lower-carbon road networks.

The project - funded by the Department for Transport and delivered in collaboration with Transport for West Midlands (TFWM) - builds on Coventry City Council's use of innovative materials to resurface roads in the city, such as using recycled rubber pellets on a number of roads in Cheylesmore in recent years.



Coun Patricia Hetherton says taking part in the trial means 'resurfacing two roads for the cost of one'.

Coun Patricia Hetherton, Coventry City Council's Cabinet Member for City Services, said: "Coventry has always been a city of innovation, and we're proud to be leading the way once again as we trial these exciting low-carbon road materials right here on our streets."

"Projects like this not only help us tackle the climate crisis, but also support our commitment to creating cleaner, greener neighbourhoods for residents."

"By investing in this trial, we're able to resurface two roads for the cost of one - it's a win for the

environment and a win for local taxpayers."

Mark Corbin, Director of Network Resilience at TFWM, said the trials reflected a commitment to tackling the climate emergency and developing greener, more resilient roads.

He added: "By testing these new materials here in the West Midlands, we're laying the foundations for a more sustainable transport future - locally and nationally."

The trials are being led by TFWM, with local delivery supported by Coventry City Council alongside contractors Balfour Beatty, MacDonald

Surfacing, and Holcim.

A case study and summary of Coventry's initial trial results will be published later this year, contributing to the UK's wider efforts to reach net-zero carbon emissions and transform the way roads are built and maintained.

Visit [www.decarbonisingroads.co.uk](http://www.decarbonisingroads.co.uk) and [www.adeptnet.org.uk/livelabs2](http://www.adeptnet.org.uk/livelabs2) for more information about the programme.

The resurfacing in Broad Lane and Willenhall Lane will take place over the coming weeks.

## Travelling back in time

A JOURNEY 2,000 years into the past will begin this weekend at the Lunt Roman Fort in Coventry.

Families will be transported back to Roman Coventry as the Lunt Roman Festival returns, complete with gladiatorial combat, a living history village and a fire-breathing twist inspired by ancient myth.

The annual event will bring the fort to life on Saturday and Sunday (August 9 and 10).

This year's Year of the Dragon theme sees the offspring of the legendary Bagradas Dragon - a fearsome serpent which is said to have terrorised Roman soldiers in North Africa - descend on the fort.

Guests will be able to watch gladiators as they entertain the masses, meet costumed characters in the living history village, try hands-on crafts and browse unique souvenirs in the Roman marketplace.

Other attractions include archery sessions, the Family Battle, and the Palace of Sanctuary.

The reconstructed Roman site in Baginton, which is believed to have been built during the Boudican rebellion in AD 60, offers a rare glimpse into military life during the Roman occupation of Britain.

Lisa Ford, Head of Learning and Engagement at CV Life, which operates the Lunt Roman Fort, said: "The Lunt Roman Fort is a truly unique historic site, and the festival is an incredible way for families to experience its story - from gladiators and merchants to this year's exciting dragon twist."

The Lunt Roman Festival runs from 10am to 4pm on August 9 and 10. Visit [www.luntromanfort.org/events](http://www.luntromanfort.org/events) for more information.

Start planning your next adventure today with

# JOHNSONS

Part of the Coach Travel Group

Call  
01564  
510 307






Whether you're dreaming of a relaxing UK getaway or a fun filled day out, our brand new Holiday and Day Trips brochures are packed with inspiring ideas for every traveller.

★★★★★

**feefo** CO

- Comfortable, luxury coach travel
- Hand-picked destinations across the UK & Europe
- Friendly, knowledgeable drivers & couriers
- Quality hotels & great value inclusions
- Exciting excursions and itineraries
- Trusted for over 115 years of travel excellence



Request your copy today or view it online at:

www.johnsonscaches.co.uk



SCAN ME

or scan the QR code.

As we always like to say... Travel with Johnsons - Travel with Friends!

# Jim finds picture perfect way to mark anniversary

**A CELEBRATED Rugby artist has immortalised the Percival Guildhouse in watercolours to help mark its 100th anniversary.**

Jim Watson, who refined his talents at the adult learning education centre, has depicted the town centre side of the Grade II-listed 19th century building in its gardens behind Rugby Art Gallery and Museum.

Jim said: "As someone who has benefited from taking art classes at the Guildhouse many years ago, I was happy to provide an illustra-

by **Andy Morris**  
andy.morris@bullivantmedia.com

tion of the building as my contribution to the centenary celebrations." Jim came to Rugby as an apprentice with British Thomson-Houston, later becoming a draughtsman with AEI.

In his spare time, he was contributing gag cartoons to national newspapers and magazines but he became a full-time freelance illustrator when publisher IPC offered him regular work drawing for children's comics in the late 1960s.

He has gone on to write and illustrate more than 20 books, and has worked with a variety of advertising agencies and publishers. Despite having learned different art techniques and technologies 'on the job', his signature style remains line and watercolour, which he has used to depict scenes around the UK.

A 2025 calendar for Rugby featured a series of Jim's drawings of notable local buildings, capturing the essence of the town.

The Guildhouse, Rugby's independent centre of lifelong learning, began life in 1925 when former

pupils of Rugby School bought the property in St Matthew's Street, once home to antiquarian Matthew Holbeche Bloxam, to create an adult education centre in memory of former Head Master, Dr John Percival.

It continues today offering a wide range of art, craft, wellbeing and academic courses.

Prints in different sizes, framed or unframed, and greetings cards featuring the illustration are available for sale from the Guildhouse.

The Percival Guildhouse reopens on August 14 when enrolments commence for its autumn term.



**Jim Watson with his illustration of The Percival Guildhouse.**

## Legion members to hold service to remember 80 years since VJ Day

A CEREMONY in Rugby will mark 80 years since the end of the Second World War later this month.

Members of local branches of The Royal British Legion will hold a Sunset Service to remember the events of VJ Day - August 15, 1945.

To mark the date, Rugby will remember all who took part in the Far East campaigns - often referred to as 'The Forgotten Army' - and will also remember those who were prisoners



of war during that time. Led by a piper and members of the Brass Band of

Central England, contingents of serving members of the armed forces, cadet

units and representatives of local organisations will parade to Hillmorton War

**Hillmorton War Memorial hosted a similar service the 80th anniversary of D-Day. Picture by Kevin Marson.**

Memorial for a service led by Rev Steve Gold of St John the Baptist Church. The Lamp of Peace will be lit and a beacon will be lit as the sun sets.

The ceremony will be attended by the Deputy Lord Lieutenant of Warwickshire Dr Eric Wood OBE, the High

Sheriff of Warwickshire Mrs Karen Lynch MBE, and the Mayor of Rugby, Coun Barbara Brown.

All are welcome to join the event by gathering at Hillmorton War Memorial at 8.45pm on Friday August 15. Attendees are asked to bring a tea-light to light the memorial in remembrance.

Following the ceremony, the Hillmorton Ex-Servicemen's Club will host an evening of entertainment with a South Pacific theme.



Helping You Support Someone *Vulnerable.*

Expert legal advice

when it matters most.

Talk to our trusted legal advisers *today.*

0121 733 8000  
wilkes.co.uk

Your legal partner for all things in *life.*



# THE BED FACTORY

## SPECIALISTS IN BEDS AND MATTRESSES FOR PEOPLE WITH BACK, SHOULDER OR HIP PAIN.

# SALE NOW ON

### The Harrison Handmade Beds



Complete Range of Harrison FR **Chemical Free** Beds on Show

### Special Price Ottoman



Single £449 • Double £499  
King £599 • Super King £699

### Sutton Wooden Frame Hand Made Frame



Single £339 • Double £419  
King £469 • Super King £589

### 1 WEEK DELIVERY ON ELECTRIC BEDS



We are specialists in electric adjustable beds and have A Large Selection Available Starting From £999

### Avon Fire Side Chair



£669.00

### Special Edition 2 Drawer Bed Set



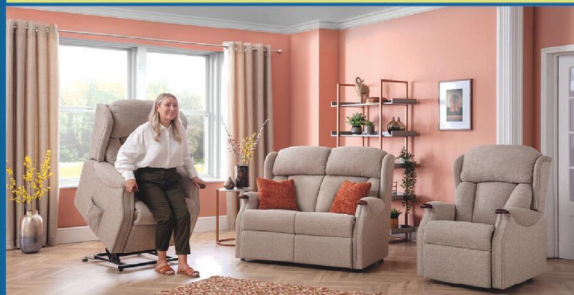
3'0 was £449 now £389  
4'6 Was £599 now £499  
5'0 was £699 now £599

### Bedroom Furniture



Full Range of Bedroom Furniture Available

## Celebrity studio in store



### Mammoth Ultimate Health Mattress

5'0 Pure Mattress or 2000 Limited Stocks  
Reduced from **£2139**  
TO JUST **£1599**

Helps reduce back, shoulder and hip pain

# FREE Local Delivery and FREE Disposal on orders over £499\*

\*Terms and conditions apply see in store

## Leamington's Largest Independent Bed Retailer

**We can supply a large range of beds in 1 to 2 weeks - 3' Single Beds also available - WE SUPPLY WHEN OTHERS FAIL**

139 Regent Street, Royal Leamington Spa, CV32 4NX

01926 422404

sales@thebedfactory.co.uk  
and www.thebedfactory.co.uk

★ Trustpilot ★★★★★



The Rugby Food and Drink Festival will return in September following a successful spring event in April.

## Anyone for seconds?

A SECOND helping of the Rugby Food and Drink Festival is coming to town next month.

The autumn edition of the festival takes place in Regent Street on Saturday September 20, between 11am and 5pm.

Following on from a successful spring event, the festival will feature over 50 food and drink stalls showcasing local and international cuisine.

Talented local chefs will perform live culinary demonstrations and share their cooking secrets at a pop-up kitchen.

The festival will also feature family-friendly entertainment including face painting, mini rides, street entertainment and live music.

Rugby First Business Director Linda Lowne said: "Several thousand people are expected to attend the

event which will have a significant impact on the town centre economy.

"The event is always popular and provides a great opportunity for local businesses and start-ups to showcase the excellent food offer we have here in Rugby and the surrounding area.

"If you are a local restaurant, cafe, pub, bar, food or drink business and are interested in having a stall at the festival please get in touch.

"We are also keen to hear from any local businesses in terms of sponsorship, promotions or offers that could run in advance or on the day to take advantage of the additional event footfall."

Email [emma@ucltd.co.uk](mailto:emma@ucltd.co.uk) to apply for a stall at the event, or [linda@rugbyfirst.org](mailto:linda@rugbyfirst.org) for festival promotions, offers or sponsorship.

Visit [www.rugbyfirst.org](http://www.rugbyfirst.org) for more information on the festival.

# Grant helps charity to stay on the road



A new minibus for New Directions.

NEW Directions Rugby is driving forward in style thanks to a grant from Warwickshire County Council.

The funding, from the authority's Councillors' Grant Fund, has allowed the charity to buy a new wheelchair accessible minibus - improving transport options for the people it supports.

Founded in 1951 by a group of dedicated parents seeking better services for children with learning disabilities, New Directions has become a cornerstone of the Rugby community.

Today, the charity offers a comprehensive range of support, including supported living, residential care, respite services, and day opportunities.

The new minibus is already making a big difference.

New Directions' operations manager Carol Paynes said: "Warwickshire County Council has long been a supporter of New Directions, and this grant helps to continue to build on that partnership.

"The new vehicle is already making a difference, allowing more customers to attend medical appointments, explore outdoor spaces, and participate in community activities with greater ease and comfort."

New Directions plans to use the vehicle this summer for holiday trips

WCC spokesman Coun Mike Bannister "Councillor grants are a vital tool for empowering local communities and supporting organisa-

tions that make a real difference in people's lives. It's inspiring to see how the funding has helped New Directions Rugby enhance accessibility and inclusion with the purchase of their new wheelchair accessible minibus. These grants reflect our commitment to ensuring inclusion and independence for everyone."

Visit [www.facebook.com/newdirectionsrugby](http://www.facebook.com/newdirectionsrugby) to learn more about New Directions Rugby.

The Councillors' Grant Fund provides each of WCC's 57 councillors with £8,000 to support small-scale projects that benefit their local communities. The application window closes on July 20. Visit [www.warwickshire.gov.uk/grants](http://www.warwickshire.gov.uk/grants) for full details and how to apply,

**VERTICAL**      **ROLLER**      **VENETIAN**

**ROMAN**      **SHUTTER**      **INTU**

**10 YEARS WARRANTY ON SHUTTER BLINDS**

Available in beautiful and stylish Hard Wood and Faux Wood

**WE WILL BEAT ANY LIKE-FOR-LIKE QUOTE**

Visit us at: 21 Brixham Drive, Coventry, CV2 3LA

Email: [info@brixham-blinds.co.uk](mailto:info@brixham-blinds.co.uk)

Contact us today for a **FREE** no-obligation quotation

**T: 02476 666686** [brixham-blinds.co.uk](http://brixham-blinds.co.uk)

## BRIXHAM

# BLINDS

## Residential and Commercial

Brixham blinds are a well-established blinds company offering to trade and consumer. With a great range of quality bespoke and made to measure blinds by an established blind company you can trust.

Whether you're thinking of vertical blinds, roller blinds, venetian blinds or roman blinds, shutter blinds, all of our blinds come with child safety regulations and fittings to make sure your home is safe.

# Auction raises lots for those battling with debt

A CHARITY auction in Rugby raised £3,500 to help people struggling with debt.

The team from Revive Churches in Rugby, who partner with debt help charity Christians Against Poverty (CAP), hosted the auction at The Merchants Inn.

An Evening With CAP Rugby saw guests support the auction led by auctioneer DJ Dan Sambell, and also hear real-life stories shared by CAP UK speaker, Jodi Bowring.

Karen Swaffield, Rugby CAP Debt Centre manager, said: "We're so thankful for all the local businesses and supporters who generously supplied auction donations, and for all the people who came and supported the event. It was a wonderful evening, and we managed to raise a staggering £3,500, smashing our £2,000 fundraising target."

Funding was secured in 2024 for two additional debt coaches to join the centre, enabling an expansion of CAP Rugby's debt help and money coaching services to meet the need in the area.

Karen continued: "We know there is a huge need for debt help in Rugby, and thanks to people's overwhelming generosity, we can continue our free services, delivered directly into client's homes. All proceeds from the auction will go towards the Rugby CAP Debt Centre running costs, enabling us

to deliver free debt help to more households through our in-depth and person-centred service.

"We are able to do all of this completely free of charge, thanks to funding by many generous local people, organisations and churches right across our community. This means we can help those who need us the most, particularly during this current cost of living crisis.

"This event has also given us the opportunity to raise awareness of our newly expanded centre and the free services that we offer. I encourage anyone living with the burden of debt to please get in touch."

CAP's new client report, No time to Lose, highlights that many West Midlands households are facing a debt crisis, and 8million adults across the UK are in need of debt help.

New CAP clients in the West Midlands on average owed over £12,385. They had organisations chasing them for payments on 13 different debts, with 46 per cent of their arrears being for priority debts, often for essential bills like Council Tax, rent arrears, gas and electricity.

Visit [www.becchurch.org.uk/cap-rugby](http://www.becchurch.org.uk/cap-rugby) or contact Karen Swaffield at [rugby@capuk.org](mailto:rugby@capuk.org) to find out more about CAP Rugby. Call CAP's helpline on 0800 328 0006 for free debt help.



CAP Rugby Debt Centre manager, Karen Swaffield, with the King's High Sheriff of Warwickshire, Karen Lynch at the auction.

## Festival set to make return

RUGBY Literary Festival is returning in the autumn, following a successful inaugural event last year.

The festival will take place across the town centre from Friday October 3 until Sunday October 5.

Organisers Rugby First, in partnership with local author Lindsay Woodward and other groups and organisations, are planning to expand the festival - and want to hear from anyone interested in organising an event.

The organisers say the event will comprise storytelling, workshops, book fairs, authors, discussion panels, competitions, street art, dressed windows, and more.

New for this year is a special Family Day on Sunday October 5, featuring free workshops, a story trail and giveaways for children.

Lindsay said: "I am thrilled that the festival is returning again as it proved so popular last year.

"This year's theme will be The Lost Chapter, and the programme is already bigger than last year's, and with so much more variety. No matter who you are or what your interests are, I think there is something for you."

Rugby First Business Director Linda Lowne added: "Last year's festival proved extremely popular and attracted local people and visitors from further afield.

"As well as looking for people to organise events or be part of the Book Fair, we are also looking for local businesses to host events and dress their windows - so in either case, please get in touch."

Visit [www.rugbyfirst.org](http://www.rugbyfirst.org) for more information.



# OUR BIG SALE IS STILL ON

## INFLATION EVERYWHERE - BUT NOT AT CARPET MILL!

Everything is going up in price, the same for Carpets and this is why it pays to go to Carpet Mill. Manufacturers of yarn and other materials for making carpets have all had price rises and some manufacturers are busy changing their specifications to many ranges to compensate. They also get surplus rolls that they cannot sell to the big stores as they don't have enough stock left to service them.

Therefore, we are buying those rolls at a FAT DISCOUNT and passing it on to YOU.







## BRAND NAME CARPETS AT LOW LOW PRICES

# CARPET MILL

CROMWELL STREET (OFF RED LANE) COVENTRY CV6 5EY TEL: (024) 7666 1985

SOME CUSTOMERS TRAVEL MILES - YOU DON'T HAVE TO - WE ARE HERE

www.salecarpet.uk





The Percival Guildhouse is launching several new courses and workshops this autumn.

# New courses are on the way

THE 'HOME of lifelong learning' in Rugby is counting down the days to the launch of its autumn programme of courses for adults of all ages and interests.

The Percival Guildhouse is launching several new courses and workshops alongside popular favourites of art and craft courses, history, languages and a range of wellbeing courses.

New offerings include Character Concept Design for Games and

Animation and an Introduction to Animation. History lovers may be drawn to The Franco Years or From Carta to Charter. Also new are Learning to Use Your Sewing Machine and Contemporary Embroidery and Stitch Art.

All courses start in early September. Visit [www.percival-guildhouse.co.uk](http://www.percival-guildhouse.co.uk) for the full list of all courses and workshops, which will be available when booking opens on Thursday (August 14).

# Cancer bus could be a real lifesaver

A GRATEFUL cancer survivor who had an early diagnosis thanks to a screening programme has encouraged residents to take part.

The NHS Cancer Bus Tour will embark on the final part of its journey by delivering life-saving information to Rugby, Warwick and Nuneaton next month, following successful tours in Coventry and Warwickshire earlier this year.

David Assheton, who lives in Rugby, was diagnosed with the early stages of lung cancer after attending screening - and is raising awareness of how initiatives like the Cancer Bus Tour can catch cancer early and increase the chances of successful treatment.

He said: "I'd urge anyone to visit the Cancer Bus when it is in their local area. You think it won't happen to you but it's good to stay aware of the symptoms of cancer and screening programmes that can find cancers early."

"I had no symptoms and I was as fit as a fiddle, playing international Masters hockey, tennis and being generally active, so it came as a big surprise when I received my lung cancer diagnosis."

"My advice would be to always go for checks when invited. It takes me back to my working life in the motor industry - you keep up with preventative maintenance and services for your car, so why wouldn't you do the same with your body?"

The Cancer Bus Tour offers cancer screening information and talks with a range of healthcare experts including GPs, Targeted Lung Health Check and Bowel Screening teams, professionals from mental health services, dieticians and more.

Mandeep Kaur, Lung Cancer Screening Nurse at University Hospitals Coventry and Warwickshire (UHCW) NHS Trust, said: "More and more patients are now coming to us displaying no visible cancer symptoms. However, once they have had a CT scan, they are requiring further investigations due to suspected



cancer or after we have detected other issues causing concerns.

"The earlier we find cancer, the more efficiently and effectively we can treat it, so we're encouraging everyone to get all of the checks you're eligible for when invited."

Visit <https://tinyurl.com/2r5jfanf> for more information about screening, or [www.nhs.uk/conditions/cancer](http://www.nhs.uk/conditions/cancer) for information about cancer symptoms.

### The Cancer Bus Tour schedule

- Tuesday September 2, 10am-4pm: Griff Hollows Site, Nuneaton
- Wednesday September 3, 10am-4pm: CHESS Centre, Nuneaton
- Thursday September 4, 9am-12.30pm: Delta Hotels, Warwick
- Thursday September 4, 1.30pm-4.30pm: Dunchurch Park Hotel, Rugby
- Friday September 5, 10am-4pm: Eliot Fields Retail Park, Rugby
- Saturday September 6, 10am-4pm: Asda, Rugby

## The New Ocean Hotel

WESTON-SUPER-MARE

Amazing Offers  
**Up To 25% Off**

### FANTASTIC FIVE DAY BREAKS

**\*\*Four Nights Accommodation \*\*Full English Breakfast**  
**\*\*Four Course Evening Meal \*\*Live Nightly Entertainment**  
**\*\*Optional Coach Pick Up**

Monday 25th Aug - Friday 29th Aug	Was £345	NOW £295pp
Monday 1st Sept - Friday 5th Sept	Was £339	NOW £289pp
Monday 8th Sept - Friday 12th Sept	Was £335	NOW £285pp
Monday 22nd Sept - Friday 26th Sept	Was £335	NOW £285pp
Monday 29th Sept - Friday 3rd Oct	Was £329	NOW £279pp
Monday 6th Oct - Friday 10th Oct	Was £325	NOW £265pp
Monday 20th Oct - Friday 24th Oct	Was £325	NOW £265pp

### FREE BAR WEEKENDS

**\*\*Three Nights Accommodation \*\*Full English Breakfast**  
**\*\*Four Course Evening Meal \*\*Live Nightly Entertainment**  
**\*\*Optional Coach Pick Up \*\*FREE BAR 6pm-10pm**

Friday 22nd Aug - Monday 25th Aug	Was £329	NOW £279pp
Friday 29th Aug - Monday 1st Sept	Was £329	NOW £269pp
Friday 5th Sept - Monday 8th Sept	Was £329	NOW £269pp
Friday 12th Sept - Monday 15th Sept	Was £325	NOW £265pp
Friday 19th Sept - Monday 22nd Sept	Was £325	NOW £265pp
Friday 3rd Oct - Monday 6th Oct	Was £319	NOW £255pp
Friday 17th Oct - Monday 20th Oct	Was £309	NOW £249pp



To book or for further information please call us on **01934 621 839** • [www.newoceanhotel.co.uk](http://www.newoceanhotel.co.uk)



# Kenilworth Jewellery, Coin, & Antique Valuation Day

## Thursday 14th August

### 10am to 2pm

Valuations of Silver, Gold, Jewellery, Coins, Watches, Banknotes, Antiques, and Collectables

Items may be left to be consigned into Auction

**St Francis of Assisi Church Hall,  
110 Warwick Road,  
Kenilworth, CV8 1HL**



Refreshments in aid of WCS Care



### Free Home Visits | Estate Clearances & Downsizing

If you have a lot of items you want valuing, we offer a **FREE** home visit service where we can come to your home. Contact us for more info

**T: Hansons Warwickshire 07470 459309**

**E: [clivejones@hansonsauctioneers.co.uk](mailto:clivejones@hansonsauctioneers.co.uk)**

**[www.hansonsauctioneers.co.uk](http://www.hansonsauctioneers.co.uk)**



**Hansons Auctioneers, Etwall, Derbyshire, DE65 6LS**

## Fine and jail term for drunk driver

POLICE had to put a rolling roadblock in place on the M6 after a drunk driver put his and other lives at risk.

The 43 year-old driver from Napton was twice the legal limit when seen by an officer patrolling the motorway near junction 3A Corley just before 4am on January 29.

He was seen on dashcam weaving in and out of lanes, braking erratically and nearly colliding with more than one passing lorry while sometimes doing only 30mph in a 70mph limit.

Concerned for his safety and other road users, traffic officers put the rolling roadblock in place to create a large gap between him and other drivers.

The driver then drove his car into Corley Services where he was arrested.

At Birmingham Magistrates Court, the man was sentenced to a 42 month driving ban and fined \$666 with an additional \$266 victim surcharge and \$85 costs, totalling \$1,017.

PC Wil Weininger, of the Serious Collision Investigation Team, said "At court he changed his plea from not guilty to guilty after initially claiming he was driving in response to an emergency. However this was found to be untrue.

"This significant ban of three and a half years reflects the danger this driver posed to other road users on the M6 that morning. Following his arrest, a breath test revealed he was almost twice the legal drink drive limit.

"We would also like to thank our National Highways colleagues who patrol our A roads and motorways to identify issues and help keep the traffic running smoothly."

National Highways Team Manager, Chris Freeth, added: "Traffic officers are out on our major roads and motorways 24/7, 365 days a year, helping to keep people safe and traffic moving.

"We want everyone who uses our roads to get to their destination safely but road safety is a shared responsibility – it can't be achieved in isolation. That is why we work so closely with police partners and of course road users to help us collectively achieve our long term zero harm ambition."

# Arrests see more fall foul of driving laws

MORE drink and drug drivers have been taken off Warwickshire's roads.

Eleven drivers have been banned from the roads for a total of 20 years after appearing at Leamington Magistrates Court.

Three arrests were made following crashes and three after members of the public called police to report the driver.

The average age of the seven drivers convicted for drink driving related offences was 41, while the age of the four banned for drug driving offences was 25 years-old. Bans ranged from 12 to a 44 month ban given to a 38 year-old woman.

With drink and drug driving a factor in around 30 deaths and serious injuries on Warwickshire's roads every year and police are urging drivers to think twice before getting behind the wheel if they are not fit to drive.

PC Keil Hetherington said "Any alcohol can impair your ability to drive. The only safe option is to avoid alcohol completely if you're driving - just one drink could put you over the limit.

"Whilst enforcement and education are key in changing dangerous driver behaviours on our roads, for everyone's safety, we need drivers to make the decision themselves not to drink or take drugs and drive and to encourage their friends and family to do the same."

People with a drink or drug problem can seek help from Change Grow Live who offer a free and confidential drug and alco-



hol service for adults and young people in Warwickshire. Visit [www.changegrowlive.org/drug-alcohol-service-warwickshire/](http://www.changegrowlive.org/drug-alcohol-service-warwickshire/) for further details.

Anyone concerned about suspected drink and drug drivers is urged to call police on

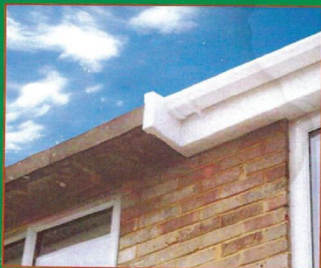
101 or in an emergency 999.

**Eleven drivers have been banned from the roads for a total of 20 years after appearing at Leamington Magistrates Court.**

## RUTILUS

Concrete Gutter Replacements Ltd

We are proud to be an approved Which Trusted Trader . . .



- Specialists in concrete gutter removal.
- Over 10 years experience.
- Free quotations.
- Family run business.
- Payment terms available.

Call today for a free Quote  
 07538 554948 (Helen) • 07837 255168 (Alan)  
 Tel: 01527 454075  
 or email: [sales@rutilusgr.co.uk](mailto:sales@rutilusgr.co.uk)  
[www.rutilusgr.co.uk](http://www.rutilusgr.co.uk)

We are proud to be an approved



Are these the problems that you suffer with?



How **Rutilus** can help



We visit your property, survey any damp damage, and perform a Health and Safety check.

We measure and discuss your new guttering system.

We leave you with a hassle free, no obligation, quotation valid for 6 months.



"after the neighbour saw the transformation - he booked to have his done"

Call today for a free Quote  
 07538 554948 (Helen) • 07837 255168 (Alan)  
 Tel: 01527 454075  
 or email: [sales@rutilusgr.co.uk](mailto:sales@rutilusgr.co.uk)  
[www.rutilusgr.co.uk](http://www.rutilusgr.co.uk)



**RUTILUS**  
 Concrete Gutter Replacements Ltd



# AUGUST BONANZA CARPET



Order now in August to benefit from



Quality Carpets at  
**UNBEATABLE PRICES**

# at GODIVA CARPETS

**You Can find your Perfect Carpet AND Save a Fortune too!**  
Huge Choice of Qualities and Variety of Colours to Compliment Any Interior  
Plenty of Bargains to suit every pocket  
**LOW, LOW PRICES - GREAT, GREAT SERVICE**

**100's OF  
AMAZING CARPET AND  
FLOORING DEALS ACROSS  
OUR EXTENSIVE  
RANGE**

**Buying quality and affordable Carpets couldn't be easier - and Don't Worry, the Team at Godiva Carpets will make it even easier for you, to find your perfect carpet or flooring options**

- **Top Quality Wilton Royal to Branded Room Sized Remnants to clear and ready to go (No reasonable offer refused)**
- **Landlord Deals from only £24**



**OUR NORMAL OPENING HOURS ARE  
9AM TO 5.30PM MONDAY TO SATURDAY  
(CLOSED ON SUNDAYS)**

# 02476 551200

**GODIVA CARPETS LTD, ARGYLE HOUSE, COLLINGWOOD ROAD,  
EARLSDON, COVENTRY CV5 6HW**

VISIT OUR ONLINE STORE [WWW.GODIVACARPETS.CO.UK](http://WWW.GODIVACARPETS.CO.UK)



**Brintons**

**CAVALIER  
FLOORING SYSTEMS**

**Lano  
Carpet Solutions**

**Penthouse  
Carpets**

**ABINGDON**

**ulster  
www.ulstercarpets.com**

**STAINFREE**  
The original and the most popular easy-clean carpet

**WILTON  
ROYAL**

**AND MANY MORE LEADING BRANDS**

# GODIVA CARPETS

*A family business trading since 1953*

**CLOSED  
SUNDAYS**

# PCC praise for police force as knife crime cut

**A SHARP drop in knife crime in the West Midlands has been welcomed by the region's Police and Crime Commissioner (PCC) Simon Foster.**

Mr Foster praised the hard work of West Midlands Police after the new statistics were announced, including a notable reduction in knife-enabled robberies.

The figures reveal that knife crime involving under-25s fell by 15 per cent since April 1 - following an 18 per cent reduction throughout the 2024/25 financial year.

The West Midlands has also achieved a drop of more than 25 per cent in knife robberies, the biggest fall of all the seven English police forces that are part of a dedicated government taskforce.

Mr Foster said: "This is very welcome news and demonstrates the relentless commitment, dedication and hard work of the officers and staff of West Midlands Police."

"Tackling knife crime and reducing violence has always been one of my top priorities, and it is a testament to the force's action and the essential investment in our wider prevention work, tak-

ing place within our Violence Reduction Partnership, that we are seeing these welcome reductions.

"I am particularly pleased to see the significant drop in knife-enabled robberies, which is the largest reduction among all the forces in the government taskforce. However, while these figures are encouraging, there is absolutely no room whatsoever for any complacency. One victim of knife crime, is one too many."

"I will continue to hold West Midlands Police to account, to ensure this positive trend is maintained and that we



West Midlands PCC Simon Foster alongside Home Secretary Yvette Cooper and Chief Constable of West Midlands Police, Craig Guildford.

continue the constant and unremitting action required, to prevent and tackle knife crime, keep people safe and secure and save lives."

West Midlands Police Chief Constable Craig Guildford added: "We've seen some impressive reductions in knife crime, which has the real-world impact of fewer lives being lost, and fewer

families and communities being torn apart.

"While it's certainly pleasing, there's still a huge amount of work for policing and wider society to do to tackle this problem."

"It's part of our ongoing commitment to make the West Midlands a safer place for everyone."

The PCC welcomed Home

Secretary Yvette Cooper to Birmingham last week for a briefing on the ongoing action to tackle knife crime and reduce serious youth violence across the West Midlands.

Ms Cooper said: "These are devastating crimes that really destroy families and we need to make sure we keep up this progress."

## 'Seized e-bikes & e-scooters should be destroyed within seven days'

THE POLICE and Crime Commissioner (PCC) for the West Midlands is calling for urgent changes to the law to allow the police to destroy vehicles used to commit crime and anti-social behaviour within seven days of seizure rather than 14.

Simon Foster's proposal is aimed at tackling the grow-

ing threat posed by e-bikes, e-scooters and other vehicles being used recklessly and unlawfully on the region's roads. Many of these vehicles - particularly modified e-bikes - are capable of reaching speeds of more than 70 mph, almost five times faster than the 15.5mph legal limit, and are increasingly being used by criminal gangs and networks.

Mr Foster said: "These vehicles are often being used to commit crime and cause fear in our communities."

"They are fast, nimble, and often modified to exceed legal limits. They are used by individuals who have no regard for public safety, and their presence can be both dangerous and intimidating."

The proposal was developed in collaboration with West Midlands Police's Anti-Social Behaviour and Roads Policing teams, whose officers report that the vehicles are often used without insurance, registration or safety equipment, and are frequently involved in dangerous group riding, off-road activity and pavement use.

The PCC also emphasised the need for appropriate checks and balances, to ensure innocent vehicle owners are not unfairly penalised.

He added the proposed change would also reduce storage costs, improve operational efficiency, and send a deterrent message to those engaging in criminal and anti-social and behaviour.



**Direct Floors**  
Home service

Carpets | Vinyls | Laminates | Wood

Shop at home for your new carpet and flooring and receive up to 30% off shop prices. We are COVID SAFE with 1,000's to choose from with our mobile showroom!

- ◆ Mobile showroom to your home
- ◆ 1000's Samples to your door
- ◆ Fully qualified insured fitters
- ◆ Family run business since 1999
- ◆ Furniture moved & carpets uplifted for OAP'S & disabled free of charge



Find us on **facebook**

Call 7 days a week 8am-9pm  
**01527-894777**  
[www.direct-floors.co.uk](http://www.direct-floors.co.uk)




Happy to help!

# RCN BEDS FURNITURE

**£599**

**SAVE**

**RECLINERS**

**£899**

**OTTOMAN BEDS**

**£299**

**WHILE STOCKS LAST!**

**SAVE**

**SAVE**

**OAK/PINE BEDROOMS**

**SAVE**

**SAVE**

**CARPETS**

**SAVE**

**ITALIAN SOFAS**

**SLIDING ROBES**

**SAVE**

**SAVE**

**MATTRESSES**

**BEDROOM FURNITURE**

**SAVE**

**SAVE**

**WE ARE OPEN 6 DAYS 9AM-5PM**

**rcn**  
Beds & Furniture

**HENLEY ROAD, COVENTRY**  
**TEL: 02476 603254**

# Plenty to engage the eyes and ears in RSC's latest offering

## Theatre review

**The Winter's Tale**  
RSC, Stratford

AN OMINOUS, but always beautiful moon hangs over the action in this spirited and monumentally staged reading of *The Winter's Tale*, its very presence seeming to affect the tides of man as well as helping to mark the passing of time.

Beneath it the action of Shakespeare's puzzling but persuasive tale plays out in a fairly narrow colour palette dimmed by moonlight and a persistent fog.

There is a strong visual foundation to director Yael Farber's production, a constant presence of movement and dance set against broad stage pictures and human tableaux.

An impressive technical contribution supports the acting. Snow falls steadily from above, fire bursts from the ground sending alarming blasts of heat through the auditorium and, as we've become used to this season, there's water in the design - this time in the form of an extended trough to be walked through with no apparent purpose.

For all the complexities of the movement and staging throughout the early stages the over-riding sense in one of noise. There's a

Picture by Marc Brenner (RSC).



passion in the acting which, when stretched out over the lengthy arguments of the text results in an awful lot of shouting.

Jealousy, its repudiation, the misguided judgements and the anguished reactions to that are all

handled at full volume with little to interrupt the torrent by way of contrast.

Bertie Carvel's Leontes pitches himself at a level of unhinged paranoia from the start and stays there managing to find commendable

nuances in quite a narrow band. Madeline Appiah as his queen is equally forceful, a mix of power and indignation. Plenty to admire in both performances and no danger of either going unnoticed.

There is robust support through-

out the company, particularly when it comes to the movement, under Imogen Knight, which helps turn noise into spectacle. A fine and varied soundtrack by Max Perryment underpins both the dance and, without ever becoming annoyingly intrusive, the lengthier passages of the discursive scenes.

In some respects this, as befits a time when the nation seems to have gone football crazy once more, is a game of two halves. The bombast of the first gives way to a more subtle, measured tone in the second and is all the more successful for making the transition.

Trevor Fox as a kind of itinerant street hawk commenting somewhat disdainfully on what happens before him, threatens to steal the show as well as a few wallets in a scene of joyfully welcome comedy, but the focus of the production is never really in danger of tilting off its axis.

The move from statuesque despair to a slightly brittle redemption is subtly handled and there's a sense of palpable relief at having got there.

Packed with very pleasing set pieces this is a show which satisfies on all levels. With so much on offer even the occasional slightly tricky moments can be forgiven. Perhaps after all, despite the intricacies of the machinations on offer, it is the result that matters.

Matthew Salisbury

★ ★ ★ ★ ★ Trustpilot

By Coach from Coventry, Rugby

Reader Travel

SUPERDEAL

### TORQUAY SUPERDEAL

Departing Tue 10 Feb '26

Return coach travel, selected meals, a well-located hotel, happy hour and time in the beloved resort of Torquay: tick! On this great-value superdeal, we've taken the hassle out of planning so you can simply enjoy everything the English Riviera has to offer.

**SO MUCH INCLUDED...**

- ✓ Return coach travel **from Rugby**
- ✓ 3 nights at the Ashley Court Hotel, Torquay (JG2 rating) with dinner & breakfast
- ✓ **Happy hour** (7pm-9pm) on selected drinks
- ✓ Entertainment on one evening
- ✓ Free time in Torquay

**4 Days by Coach only £139**

Single Supplement £45

SUPERDEAL

### SCARBOROUGH SUPERDEAL

Departing Fri 23 Jan '26

Scarborough's is one of the best places for a coastal getaway, whatever the season. Experience a stay free of the summer crowds, take in the sea breeze and get to know the local colour at the many sights that made Scarborough the first seaside resort!

**SO MUCH INCLUDED...**

- ✓ Return coach travel **from Rugby, Coventry**
- ✓ 3 nights at the Grand Hotel, Scarborough (JG2 rating) with dinner & breakfast
- ✓ **2 for 1 bar** (6pm-9pm) on selected drinks
- ✓ Free time in Scarborough

**4 Days by Coach only £139**

Single Supplement £45

SUPERDEAL

### HAYLING ISLAND COUNTRY MUSIC BREAK

Departing Mon 20 Oct '25

Howdy folks! Slide on your cowboy boots and put on your Western belt buckle because it's time to tap your toes to some country music at the Warner Lakeside Coastal Village. Enjoy a slice of Americana every night and more on our JG Travel Group exclusive break!

**SO MUCH INCLUDED...**

- ✓ Return coach travel **from Rugby, Coventry**
- ✓ 4 nights at the Warner Lakeside Coastal Village, Hayling Island (JG3 rating) with dinner & breakfast
- ✓ Live country music entertainment every evening
- ✓ Daytime activities in resort
- ✓ Excursions to Chichester & Portsmouth

Optional excursion to Winchester (£12pp)

**5 Days by Coach only £429**

Single Supplement £120

For more information, or to book, please call **03332 342 514** Quote **osg** or visit us online at [justgoholidays.com/OSG](http://justgoholidays.com/OSG)

033 numbers are free within inclusive minutes packages otherwise standard rates apply.

These packages are subject to JustGo! Holidays terms & conditions. Coach bookings are protected by Bonded Coach Holidays & the Association of Bonded Travel Organisers Trust Ltd. Air holidays are ATOL protected No.3088. Prices are per person, based on two people sharing a room & are based on bookings made up to 7 days post-publication, after which prices may fluctuate. Calls to OSG numbers are free with inclusive minutes packages, else standard rates apply. (Dates of date, hotel, airport or pick-up location may incur a supplement. Please see website or call for full details.)

# Forecast for Charterhouse shows very sunny intervals

## Plenty to sing about

THE SUN will certainly be shining in Coventry over this weekend.

A new giant sun art installation can be seen at Coventry Charterhouse until Sunday (August 10) as part of its UK tour of National Trust run properties.

Helios, is the latest work in artist Luke Jerram's series, following previous large-scale installations, Museum of the Moon and Gaia.

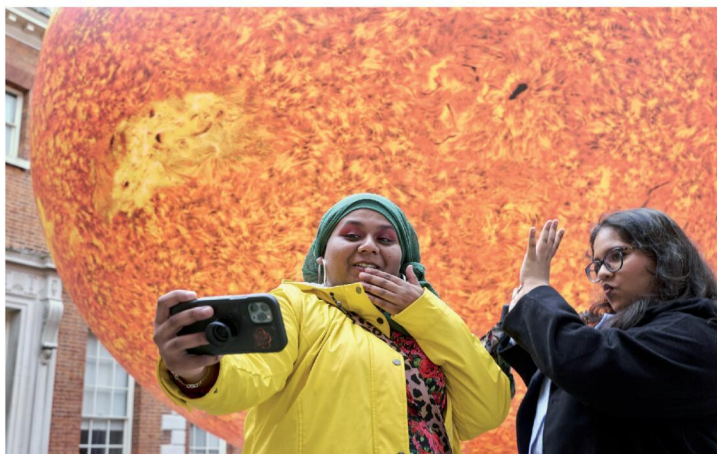
Named after the sun god in ancient Greek mythology, Helios is a seven-metre spherical sculpture that combines light, solar imagery and sounds recorded by NASA to bring the sun's intricate details into a new light.

Helios will be suspended within the walled garden of the former 14th century monastery.

Luke's innovative installation is lit from within and its detailed surface incorporates solar imagery of sunspots, spicules and filaments.

One centimetre of the sculpture represents 2,000km of the sun's actual surface. Together with the soundscape created from NASA recordings by Duncan Speakman and Sarah Anderson, the immersive experience will allow visitors to explore the intricacies, power and scale of the sun's surface in a way not previously seen.

Kristenne Pickles, operations manager at the venue, said: "As a former Carthusian monastery, it's



The sun will be shining brightly at at Coventry Charterhouse over the next few days.

the perfect backdrop for an artwork that invites reflection and wonder. We hope visitors of all ages will come and see this extraordinary sculpture, explore the garden and enjoy everything this special place has to offer."

"Helios feels especially fitting here at Coventry Charterhouse, a place long shaped by light, reflection and care. Hosting this inspiring artwork is part of our wider mission

to open up nature, beauty and history to everyone."

Visitors will be able to view Helios from all angles as it is suspended in the garden of the Charterhouse. The installation will be accessible, with a step-free route leading in front and directly underneath the giant sculpture for a close-up look at the surface of the sun.

Helios creator Luke Jerram said: "We all know that it is very danger-

ous to look directly at the sun, as it can damage our eyesight. Helios provides a safe opportunity for the public to get up close to and inspect its extraordinarily detailed surface.

"I hope that the soundscape, lighting and sheer scale of Helios will combine to make an extraordinary and uplifting experience."

Visit [www.nationaltrust.org.uk/visit/warwickshire/coventry-charterhouse](http://www.nationaltrust.org.uk/visit/warwickshire/coventry-charterhouse) for further details.

THERE is reason for fanfare at Leamington Music after two of its directors were given awards.

Artistic director Helen Beecroft has been awarded an Honorary Fellowship of Royal Birmingham Conservatoire..

Every year the conservatoire confers honorary fellowships to musicians and professionals from the world of theatre, screen, or broadcast, and to graduates or individuals who have made a significant contribution to the work and life of RBC through professional or voluntary work.

Helen graduated from Royal Birmingham Conservatoire in 2006 and has worked continuously in the music industry ever since.

Richard Philips, Leamington Music's founder and now honorary president, was awarded the Freedom of the District as part of Warwick District Council's 50th anniversary celebrations. T

he prestigious awards were given to 12 people WDC deemed to have "rendered eminent services" to the community.

Leamington Music was launched in 2006 and has been bringing world-class musicians to perform in the area ever since.

## Questions about care? We can help

We know moving into residential care is an emotional and difficult decision with lots to think about.

With over 30 years' experience, we can help you navigate the process of finding the right care home, so that you feel confident about the decision you make – whether that's choosing a WCS Care home, or one outside our group that's more suited to your needs.

If you've got questions about care, or one of our care homes, our Trusted Advisors can help.



Philip Rainsford



Drovers House, Rugby

07802 728447

p.rainsford@wcs-care.co.uk



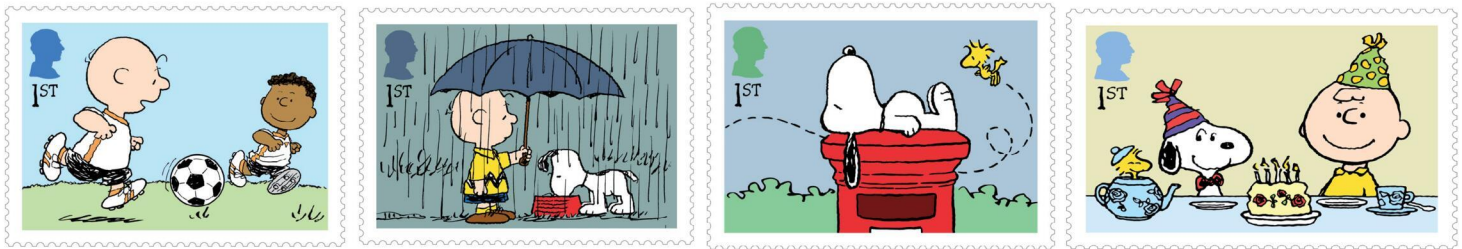
Westlands, Rugby Dewar Close, Rugby

07802 728443

j.rugg@wcs-care.co.uk



Josephine Rugg



# Classic cartoon features on stamps

ROYAL Mail has released stamps and a range of collectible products to mark the 75th anniversary of the much-loved comic strip, Peanuts.

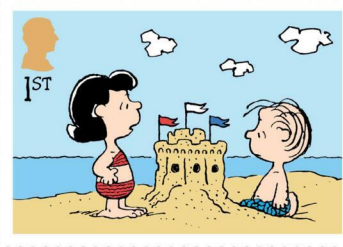
The eight stamp designs include specially adapted artworks from classic Peanuts comic strips, that feature the main characters with some special British touches.

The stamps include images of Snoopy is seen perched on a red post box with Woodstock, while Lucy and Linus enjoy a day at the seaside, building a sandcastle. Another stamp shows Snoopy and Woodstock on guard duty outside Buckingham Palace.

Schroeder plays Pomp and Circumstance No. 1 by Edward Elgar on the piano as Lucy, Snoopy, and Charlie Brown celebrate nearby.

Charlie Brown and Franklin are captured mid-game, playing football, and another stamp shows Charlie Brown and Snoopy standing together in the rain.

There's also a scene of Woodstock, Snoopy, and Charlie Brown celebrat-



ing with tea and cake, and finally, the Peanuts gang are shown relaxing peacefully under a tree in the park.

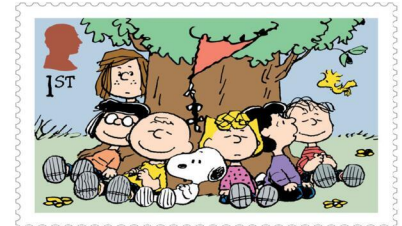
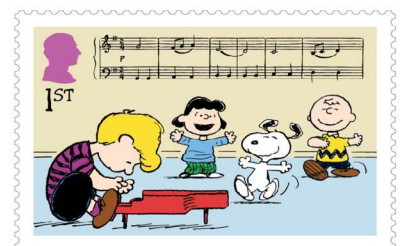
Over the 50 years Charles Schulz wrote Peanuts, the comic was read by millions around the world, and at one time was published in 2,600 newspapers globally.

One of the most notable UK publications to carry Peanuts was the Daily Mail, which featured the strip during the height of its popularity.

To this day, Peanuts remains highly popular with the young and old a quarter of a century after Schulz's final original strip appeared on 13 February 2000.

David Gold, Director of External Affairs and Policy, Royal Mail, said: "For generations, Peanuts has brought laughter, comfort, and quiet wisdom. This stamp collection is a heartfelt tribute to Charles M. Schulz's enduring legacy and the timeless charm of his comic strip."

Products are available to order at [royalmail.com/peanuts](http://royalmail.com/peanuts) and by telephone on 03457 641 641.



## MIDLAND Hand Clinic

Midland Hand Clinic is a locally based private service treating hand, wrist and elbow conditions.

We treat privately insured and self funding patients.

**Mr G Shyamalan**  
Consultant Hand Surgeon

- Carpal tunnel
- Trigger finger
- Dupuytren's
- Arthritis
- Trauma
- Tendonitis
- Cubital tunnel
- Golfers elbow
- Tennis elbow

01827 892 952

[www.midlandhandclinic.com](http://www.midlandhandclinic.com)

## Is Hand Pain Holding You Back?

Whether it's the frustration of struggling with buttons, the difficulty of opening jars, or the sadness of not being able to plant bulbs in your garden, it can be truly upsetting when pain and discomfort affect your hands.

Many common hand conditions share similar symptoms, but understanding the signs can help you identify what might be going on. Can you spot the symptoms of these common hand conditions?

**Common Hand Conditions and Their Symptoms**

**Carpal Tunnel Syndrome**  
Carpal tunnel occurs when a nerve in your wrist is put under pressure. You might be at higher risk if you have diabetes, are pregnant, or if your job or hobbies involve repetitive hand movements.

**Symptoms to look out for:**

- Pins and needles in the fingers, especially the thumb, index, middle, and half of the ring finger.
- Numbness in the hand.
- Muscle wasting in the thumb area (in more severe cases).
- Waking from sleep due to hand discomfort or numbness.

**Dupuytren's Disease**  
Dupuytren's disease involves a thickening of the tissue in the palm, fingers, or thumbs, often causing fingers to bend inwards towards the palm. Risk factors include smoking, heavy alcohol consumption, manual work, diabetes, and a family history of the condition.

**Symptoms to look out for:**

- A finger that has started to contract (bend downwards) or a noticeable lump in the palm.
- It most commonly affects the ring and little finger, but can appear in any finger or even the thumb.

**Common Cause of a Palm Lump: Thumb Arthritis**  
Thumb arthritis frequently affects the basal joint at the base of the thumb. This can make everyday small tasks, like doing up buttons, quite challenging.

**Symptoms to look out for:**

- Pain and stiffness at the base of the thumb.
- A reduction in grip strength.
- Clicking and cracking sounds in the joint with movement.

**Trigger Finger**  
Trigger finger happens when a tendon in the front of your hand thickens and gets "caught," causing your finger to lock in a bent position.

**Symptoms to look out for:**

- A finger that locks down in a bent position.
- A clicking sound or sensation when trying to straighten the finger.
- It can affect any finger, and sometimes the thumb.
- Pain that radiates up the arm from the affected finger.

**Why Choose Us? What Our Patients Say:**

"An extremely nice man. Professional but very pleasant and caring. He listened to me and took the time to explain things and advise me. I felt confident in the treatment offered and would have no hesitation in consulting him again and would recommend him to others".

"I have been treated by Mr Shyamalan before and find him excellent. That is the main reason for using the clinic".

"Genuinely caring surgeon, very happy with how I was treated".

"I can only say 5 stars for Mr Shyamalan. Friendly, kind and very easy to talk to. Very happy after keyhole surgery to help my wrist problems. Highly recommended".

**Get In Touch – We Can Help**

If you're experiencing any of the symptoms listed above, and if hand pain is getting in the way of your day-to-day life, please don't hesitate to get in touch with us. We're here to help you understand your condition and find the right solution to get you back to doing the things you love.

[www.midlandhandclinic.com](http://www.midlandhandclinic.com)

# Russell Lane

The Jewellers of Warwick

---

Sell your gold in any condition

**IMMEDIATE CASH OFFER**

No appointment necessary

---



## REPAIRS AND JEWELLERY VALUATIONS

From ring sizing and rhodiuming to replacing missing stones, all work undertaken.

---

Website: [www.russell-lane.co.uk](http://www.russell-lane.co.uk)

Tel: 01926 494 494 | Email: [sales@russell-lane.co.uk](mailto:sales@russell-lane.co.uk)

2 High Street, Warwick CV34 4AP

# Gardening

# Getting peace of mind while you're on holiday



A SUMMER holiday is often the highlight of the year, but for every gardener, it can also mean worrying about your garden, plants and lawn while you are away.

areas, reducing exposure to harsh sun and creating a microclimate that helps retain moisture. If you have a greenhouse, be sure to ventilate it and open panes to avoid overheating, if our warm weather continues.

### Slow release feed

One of the simplest steps you can take is to apply a slow-release feed or controlled-release fertiliser. These feeds provide a steady and reliable supply of nutrients for your plants, ensuring strong growth and maintained colour throughout your absence. Unlike liquid feeds that must be applied weekly, slow-release fertilisers can keep both garden beds and containers nourished for weeks, even months. They are easy to use, just mix the granules or pellets into the soil or compost, following the product's instructions, and the nutrients are released gradually over time, supporting your plants exactly when they need it most, whilst you are on your holiday.

### Don't let the pests bite

Summer holidays can sometimes coincide with an increase in garden pest activity, particularly ants. Ants can disturb the roots and leaves of your plants and can also encourage

aphid populations. Before you leave, inspect your garden and address any nests with an appropriate ant powder. Sprinkle ant powder at nest entrances and along visible trails, following label instructions to ensure safe and effective control whilst you are away.

### Conserving water

In addition to deep watering your plants with a watering can in advance, we advise laying down mulch, such as bark chips, straw or compost around the base of your plants. Mulching helps lock in moisture and also regulates soil temperature, an essential

buffer against the summer heatwaves we have been having. For those with a larger garden, make sure your water butt is ready to go if rain is predicted. This will provide you with essential supplies during the hosepipe ban and for when you get back.

### Quick garden maintenance

Just before you leave, take a walk around your garden and check for any quick jobs you can do before your holiday.

Weed your flower beds and borders to reduce competition for water, prune back any vigorous growth, and

deadhead spent blooms to encourage continuous flowering. If you have trusted friends or neighbours nearby, it's always helpful to enlist their help by leaving instructions on any special plants or areas that require extra attention.

### When you return

Once you arrive home, check each part of your garden carefully and water any dry areas and look for signs of pest activity. If needed, give everything a little tidy and a pick-me-up with a liquid feed to encourage continued growth through late summer.

**Preparing your plants**  
Before heading off, take some time to water your beds, borders, and containers thoroughly. With many hosepipe bans across the country, we advise people to be conscious of water use and use a watering can, rainwater or grey water. Deep watering encourages strong root systems, which will help your plants withstand periods of dryness while you're gone. For extra peace of mind, move pots into clusters in shaded, sheltered

# Check out our E-Editions!

**Coventry Observer** .co.uk

**Upgraded route set to improve**

**Windows Plus**  
The Coventry Observer brings you the news free of charge every week.

**Rugby & Lutterworth Observer**

**Izzy di her to**

**DRIVES**  
Are you looking to improve your driveway? We can provide you with a free quote. Call us on 0800 3032599 | Mob: 07773 911552 | www.drives.co.uk

**Leamington Observer**

**Homes to a re**

**DRIVES**  
Are you looking to improve your driveway? We can provide you with a free quote. Call us on 0800 3032599 | Mob: 07773 911552 | www.drives.co.uk

[www.coventryobserver.co.uk/editions](http://www.coventryobserver.co.uk/editions)  
[www.rugbyobserver.co.uk/editions](http://www.rugbyobserver.co.uk/editions)  
[www.leamingtonobserver.co.uk/editions](http://www.leamingtonobserver.co.uk/editions)

The same paper you love on your **mobile**, **tablet** and **computer**

#ALSLetsMe

www.arnoldlodge.com



# ARNOLD LODGE

4-18 yrs Co-educational Independent Day School



# ALS Lets ME ACHIEVE

What will your child be?

**JOIN US AT OUR OPEN DAY  
ON SATURDAY 27TH SEPTEMBER  
10:00AM - 1:00PM**



**YEAR 7  
ASSESSMENT DAY  
TUESDAY 7TH OCTOBER**

01926 778050

[admissions@arnoldlodge.com](mailto:admissions@arnoldlodge.com)

15-17 Kenilworth Rd, Leamington Spa, Warwickshire CV32 5TW

# SUDOKU

Complete the grid so that every row, every column and every 3 x 3 box contains every digit from 1 to 9.

## EASY

8		7	5				6	2
		2		8		7		9
4	6		7		1		8	
						3	2	
		1	8		3	6		4
	7	4					5	
	4		6		9		1	8
6							7	
2	9		5	7	4			

## HARD

				4		9	2	
					1		4	
			9	7				6
		9				5	2	
8	5					9	1	
1	3				7			
6			2		8			
	7		6					
	9	1		5				

# PATHFINDER

Beginning with the top highlighted letter, follow a continuous path of words associated with the given subject. The trail goes through each letter once, twisting up, down and sideways, but never diagonally.

## Herbs and Spices

P	S	L	R	I	T	A	T	A	R	I	S	R	U	E
A	R	E	P	K	A	R	S	R	A	N	E	T	N	I
A	B	Y	A	P	A	R	W	E	E	E	S	A	R	M
S	I	A	R	Y	G	O	O	E	K	R	P	E	E	G
R	L	M	O	M	A	N	L	L	D	G	E	F	R	N
O	S	E	N	C	N	C	F	R	E	U	N	O	G	I
S	E	V	I	H	N	I	L	P	E	F	F	N	A	G
B	A	A	N	M	E	R	I	V	P	A	R	O	N	E
L	Y	I	D	R	U	I	C	R	P	S	T	N	O	R
E	O	R	E	R	T	E	D	E	E	R	M	I	H	T
A	C	M	O	S	A	G	I	H	C	C	U	S	Y	S
F	L	A	M	O	J	R	L	L	M	A	M	E	M	S
V	A	D	R	R	A	A	M	N	U	S	E	D	R	E
E	E	R	A	C	M	L	C	I	A	T	E	W	C	R
N	D	F	E	N	N	E	U	M	R	D	S	A	T	E

Solutions opposite

# CROSSWORD

1		2		3		4	5	6		7
					8					
9										
10							11			
	12		13		14					
15					16					17
18					19		20			
21										
22						23				

## ACROSS

- Comment (6)
- Builds (6)
- Weighing device (6,7)
- Lingers (7)
- Subject (5)
- Once more (5)
- Expert (5)
- Repair (5)
- Baggage (7)
- Frankness (5,8)
- Respect (6)
- Account book (6)

## DOWN

- Outcome (6)
- Wedding celebration (8,5)
- Scope (5)
- Connected (7)
- Meditating (13)
- Searcher (6)
- Reville (5)
- Concentrated (7)
- Threefold (6)
- Incline (5)
- Mendicant (6)
- Degree (5)

Scribble pad

# LADDER

Using the clues provided, fill in each step of the ladder with a new word, changing one letter at a time.

- Resolve
- Water hole
- Chime
- Girdle
- Finest



# NINER

Each number from 1 to 9 represents a different letter. Solve the clues and insert the letters in the appropriate squares to discover a word which uses all nine letters.

- 45182 gives a venomous creature;
- 97321536 gives a second venomous creature;
- 135936 gives a venom.

1	2	3	4	5	6	7	8	9
---	---	---	---	---	---	---	---	---

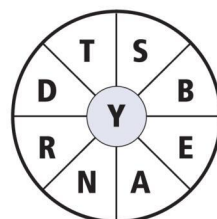
# CODEWORD

This puzzle has no clues. Instead, every number printed in the grid represents a letter, with the same number always representing the same letter. For example, if 8 turns out to be a V, you can write in V wherever a square contains 8. Using your knowledge of words, complete the puzzle.

		22		16		19	4	15	18	1	15	24	3
A													
B	26	10	10	18		23		25		24			10
C													
D		24		10	24	9	5	13	10		22	23	24
E													
F	15	17	1	10					19		10		10
G													
H				9		23	7	21	12	23	15	24	6
I													
J	10	20	8	10	1	1		19		3			15
K													
L	13		1			1	23	20		1			7
M	8		23		8		19		17	18	10	3	19
N													
O	25	14	6	25	14	12	19	10		23			
P													
Q	23		2		24				19	15	6	10	
R													
S	6	4	14		7	25	12	18	7	25		18	
T													
U	15		18		25		18		1	10	23	11	
V	7	14	13	8	14	12	24	17		5		13	
W													
X													
Y	L												
Z	14	15	16	17	18	19	20	21	22	23	24	25	26

# WORDWHEEL

You have 10 mins to find as many words as possible using the letters in the wheel. Each must use the hub letter and at least 3 others. Letters may be used only once. You cannot use plurals, foreign words or proper nouns. There is at least one 9-letter word to be found.

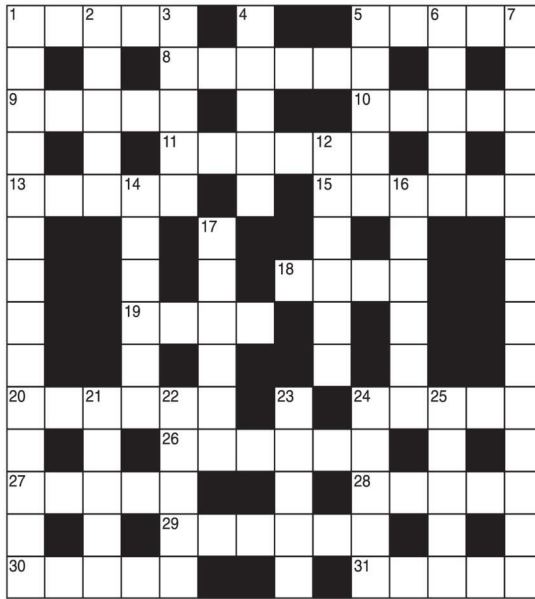


How you rate  
 15 words: average  
 25 words: good  
 35 words: very good  
 40 or more: excellent.

# GENERAL KNOWLEDGE CROSSWORD

## ACROSS

- 1 Celestial body, usually with a luminous 'tail' (5)
- 5 Mechanical being, an enemy in the Doctor Who television series (5)
- 8 Palace, situated in Florence, now a world-famous art museum (6)
- 9 Small variety of Scottish terrier (5)
- 10 The trembling poplar (5)
- 11 University city 75 miles north-east of Lagos, Nigeria (6)
- 13 Vegetables of the onion genus (5)
- 15 One of an ancient people of central Italy (6)
- 18 Rosaceous plant such as herb bennet (4)
- 19 Quadruped's gait between walk and gallop (4)
- 20 Surname of the Spanish novelist famous for The Four Horsemen of the Apocalypse (6)
- 24 Sir Alexander ---, film producer and director (5)
- 26 An air or tune (6)
- 27 A strong, twilled fabric usually of worsted (5)
- 28 Ancient Italian town and harbour near the mouth of the Tiber (5)
- 29 Withdraw and renounce a former declaration (6)
- 30 Poor misguided girl murdered by Bill Sykes in Oliver Twist (5)
- 31 This layer protects the earth from the sun's ultraviolet rays (5)



## DOWN

- 1 Former Conservative MP who was a member of Margaret Thatcher's cabinet (5,9)
- 2 Indian corn (5)
- 3 The capital of Tunisia (5)
- 4 Edible organs such as kidneys or liver (5)
- 5 Roman goddess of hunting and of the moon (5)
- 6 Fra Filippo ---, famous for religious paintings and frescoes (5)
- 7 Author of children's books such as The Wind in the Willows (7,7)
- 12 See 23 Down
- 14 Long-sleeved Persian or Turkish garment reaching to the ankles (6)
- 16 Tall, tropical grass with a hollow-jointed, woody stem (6)
- 17 Brown alloy, chiefly of copper and tin (6)
- 21 The elder brother of Moses (5)
- 22 A variety of corundum, used as an abrasive (5)
- 23 & 12 Down The sovereign's sanction to a bill passed by parliament (5,6)
- 24 Japanese city of Honshu, linked by canal to Biwa Lake (5)
- 25 The quotient, or proportion (5)

# SOLUTIONS

ACROSS: 1 Comet; 5 Dalek; 8 Uffizi; 9 Cairn; 10 Aspen; 11 Ibadan; 13 Leeks; 15 Sabine; 18 Gumm; 19 Trot; 20 Ibanez; 24 Korda; 26 Melody; 27 Serge; 28 Osta; 29 Recant; 30 Nancy; 31 Ozone. DOWN: 1 Cecil Parkinson; 2 Matze; 3 Tunis; 4 Offal; 5 Diana; 6 Lippi; 7 Kenneth Graham; 12 Assent; 14 Kafan; 16 Bamboo; 17 Bronze; 21 Aaron; 22 Emmy; 23 Royal; 24 Kyoto; 25 Ratio.

## General Knowledge Crossword

ACROSS: 1 Remark; 4 Erect; 9 Spring balance; 10 Loters; 11 Theme; 12 Again; 14 Adept; 18 Refit; 19 Luggage; 21 Plain speaking; 22 Esteem; 23 Ledger; 24 Abuse; 13 Intense; 15 Triple; 16 Slope; 17 Beggar; 20 Grade.

## Crossword

ACROSS: 1 Remark; 4 Erect; 9 Spring balance; 10 Loters; 11 Theme; 12 Again; 14 Adept; 18 Refit; 19 Luggage; 21 Plain speaking; 22 Esteem; 23 Ledger; 24 Abuse; 13 Intense; 15 Triple; 16 Slope; 17 Beggar; 20 Grade.

## Wordwheel Pathfinder

ACROSS: 1 Remark; 4 Erect; 9 Spring balance; 10 Loters; 11 Theme; 12 Again; 14 Adept; 18 Refit; 19 Luggage; 21 Plain speaking; 22 Esteem; 23 Ledger; 24 Abuse; 13 Intense; 15 Triple; 16 Slope; 17 Beggar; 20 Grade.

## Ladder

3	1	6	8	4	5	9	2	7
4	8	5	9	2	7	1	3	6
5	2	4	7	6	3	9	1	2
6	4	3	2	1	8	5	7	9
7	8	5	6	3	9	2	1	4
8	1	3	4	5	9	2	7	6
9	2	7	6	3	9	1	2	8
10	5	1	8	3	4	5	2	7
11	4	8	5	9	2	7	1	3
12	9	2	7	1	3	6	4	5
13	3	1	6	8	4	5	9	2
14	5	7	6	3	9	1	2	8
15	2	4	7	6	3	9	1	2
16	6	4	3	2	1	8	5	7
17	8	5	6	3	9	2	1	4
18	1	3	4	5	9	2	7	6
19	2	7	6	3	9	1	2	8
20	9	2	7	1	3	6	4	5
21	3	1	6	8	4	5	9	2
22	5	7	6	3	9	1	2	8
23	2	4	7	6	3	9	1	2
24	6	4	3	2	1	8	5	7
25	8	5	6	3	9	2	1	4
26	1	3	4	5	9	2	7	6
27	2	7	6	3	9	1	2	8
28	9	2	7	1	3	6	4	5
29	3	1	6	8	4	5	9	2
30	5	7	6	3	9	1	2	8
31	2	4	7	6	3	9	1	2

Hard

Easy  
Sudoku



# It's time to Like, Follow & Subscribe

Don't be LEFT BEHIND.....

- CoventryObserver
- LeamingtonObserver
- RugbyObserver

- @CovObserverNews
- @LeamObs
- @RugbyObserver

- CovObserver
- Leamington.Observer
- Rugby.Observer

# BREAKING NEWS WHAT'S ON SPORT INTERVIEWS

PUBLIC NOTICES

PUBLIC NOTICES

Warwickshire County Council

ROAD TRAFFIC REGULATION ACT 1984

Warwickshire County Council has made the following Temporary Traffic Orders:

D30050 DREYER CLOSE, RUGBY

Order Effect: Road closed to vehicular traffic from its junction with Cornwallis Road.

Reason for Order: Carriageway patching and associated works, 08.00hrs-16.00hrs.

Order Commences: 14 August 2025 for up to 18 months.

Anticipated Completion: 14 August 2025.

Access & Diversion: No diversion available.

Contractor: Balfour Beatty, Tel: 03452 415 302.

D22940 SCHOOL HILL, FLECKNOE

Order Effect: Road closed to vehicular traffic from Flecknoe Village Road to Church Hill.

Reason for Order: Carriageway patching and associated works, 09.30hrs-13.00hrs.

Order Commences: 12 August 2025 for up to 18 months.

Anticipated Completion: 12 August 2025.

Access & Diversion: Flecknoe Village Road, Church Hill and vice versa.

Contractor: Balfour Beatty, Tel: 03452 415 302.

EDYVEAN CLOSE, OVERSLADE, RUGBY

Order Effect: Road closed to vehicular traffic.

Reason for Order: To enable duct laying works.

Order Commences: 15 August 2025 for up to 18 months.

Anticipated Completion: 16 August 2025.

Access & Diversion: No diversion available.

Contractor: M J Quinn, Tel: 01543 547 118.

GRASMERE CLOSE, BROWNSOVER, RUGBY

Order Effect: Road closed to vehicular traffic.

Reason for Order: Works to renew water mains in the carriageway and footway.

Order Commences: 11 August 2025 for up to 18 months

Anticipated Completion: 5 September 2025

Access & Diversion: No diversion available.

Contractor: Chevron Traffic Management, Tel: 0330 174 4388

GORSE CLOSE, OVERSLADE, RUGBY

Order Effect: Road closed to vehicular traffic.

Reason for Order: To safely enable works to lay duct.

Order Commences: 13 August 2025 for up to 18 months.

Anticipated Completion: 13 August 2025.

Access & Diversion: No diversion available.

Contractor: Core Highways, Tel: 03300 169 688.

MILL ROAD, BUTLERS LEAP, RUGBY

Order Effect: Road closed to vehicular traffic.

Reason for Order: Works to remove vegetation from railway bridge, closed 22.00hrs-06.00hrs.

Order Commences: 11 August 2025 for up to 18 months.

Anticipated Completion: 16 August 2025.

Access & Diversion: Mill Road, Butlers Leap, Clifton Road, Whitehall Road, Murray Road and vice versa.

Contractor: QTS Group, Tel: 03300 433 030.

Warwickshire County Council proposes to make the following Temporary Traffic Orders:

CONISTON CLOSE, BROWNSOVER, RUGBY

Order Effect: Road closed to vehicular traffic.

Reason for Order: To enable duct laying works.

Order Commences: 29 August 2025 for up to 18 months.

Anticipated Completion: 1 September 2025.

Access & Diversion: No diversion available.

Contractor: M J Quinn, Tel: 01515 478 800.

D21730 DRAYCOTE ROAD, DRAYCOTE

Order Effect: Road closed to vehicular traffic from Glebe Farm Road to Birdingbury Road.

Reason for Order: Carriageway patching and associated works, 09.30hrs-15.30hrs.

Order Commences: 26 August 2025 for up to 18 months

Anticipated Completion: 27 August 2025.

Access & Diversion: Main Street, Straight Mile, Draycote Road, vice versa. NOTE: Beware of low bridge on Draycote Road.

Contractor: Balfour Beatty, Tel: 03452 415 302.

D20160 COALPIT LANE, WOLVEY

Order Effect: Road closed to vehicular traffic from its junction with Withybrook Road.

Reason for Order: Carriageway patching and associated works, 08.00hrs-16.00hrs.

Order Commences: 25 August 2025 for up to 18 months.

Anticipated Completion: 25 August 2025.

Access & Diversion: Vehicular access will be maintained where possible.

Contractor: Balfour Beatty, Tel: 03452 415 302.

MOOR LANE, WILLOUGHBY

Order Effect: Road closed to vehicular traffic.

Reason for Order: To safely enable the installation of a floor box and laying of approx. 12m duct in verge.

Order Commences: 28 August 2025 for up to 18 months.

Anticipated Completion: 29 August 2025.

Access & Diversion: Moor Lane, Main Street, London Road, Daventry Road, Woolscott Road, Grandborough Road, Sawbridge Road and vice versa.

Contractor: Core Highways, Tel: 03300 169 688.

PUBLIC FOOTPATH FROM ALWYN ROAD TO MAGNET LANE, BILTON, RUGBY

Order Effect: Footpath closed to all traffic.

Reason for Order: To safely enable cable overlay works.

Order Commences: 26 August 2025 for up to 6 months.

Anticipated Completion: 3 September 2025.

Access & Diversion: Please use an alternative route.

Contractor: NWP, Tel: 08081 642 252.

For all of the above temporary orders, pedestrian access to and egress from properties and land situated adjacent to the length of road to be closed will be maintained at all times. Vehicular access will be maintained where possible.

To report any problems with these works or for further details of our current & planned roadworks visit our website warwickshire.gov.uk/roadworksmap or call us 01926 412515.

S Duxbury, Director of Strategy, Planning & Governance, Shire Hall, Warwick CV34 4RL

Date 8 Aug 2025

PUBLIC NOTICES



ROAD TRAFFIC REGULATION ACT 1984 - SECTIONS 14(1)(a) AND (7) THE A45 TRUNK ROAD, THE M45 MOTORWAY AND THE M1 MOTORWAY (TEMPORARY RESTRICTION AND PROHIBITION OF TRAFFIC) ORDER 2025

NOTICE IS HEREBY GIVEN that National Highways Limited (Company No. 9346363) intends to make an Order on the A45 Trunk Road, the M45 Motorway and the M1 Motorway, in Warwickshire and Northamptonshire, to enable bridge repairs and resurfacing works to be carried out.

The effect of the Order, will be to - (1) impose a speed restriction of 50 miles per hour on -

- (a) the westbound carriageway of the M45 from a point 100 metres west of the tip of the nosing at the junction with the link road leading from the A45 Daventry Road, at Dunchurch, to the roundabout junction of the M45, the B4429 and the A45 Coventry Road, at Thurlaston (Thurlaston Roundabout); (b) the eastbound carriageway of the M45 from its junction with Thurlaston Roundabout, to a point 1100 metres east of that junction; and (c) the eastbound carriageway of the A45 from a point 1150 metres west of its junction with Thurlaston Roundabout, to that junction;

- (2) close - (a) the westbound carriageway of the M45 from its junction with the M1 at Junction 17, to its junction with Thurlaston Roundabout; (b) the eastbound carriageway of the M45 from its junction with Thurlaston Roundabout, to its junction with the M1 at Junction 17; (c) the link road leading to the westbound carriageway of the M45 from Daventry Road, at Dunchurch; (d) the eastbound carriageway of the A45 from its junction with the exit slip road leading to Lawford Heath Lane and the A4071, near Dunsmore Heath, to its junction with Thurlaston Roundabout; and (e) Thurlaston Roundabout; and (3) prohibit any vehicle from entering the eastbound carriageway of the A45 at its junction with the A4071, at Dunsmore Heath.

The works are expected to start on Tuesday 26 August 2025 and continue for approximately 9 months. The closures will be overnight between 20:00 hours and 06:00 hours. The speed restriction will be in place 24 hours per day for the duration of the works. The Order will come into force on 22 August 2025.

Vehicles being used for police, fire and rescue authority or ambulance purposes will be exempt from the closures and speed restriction. Vehicles being used for special forces purposes will be exempt from the speed restriction, and vehicles being used for traffic officer purposes, in connection with the works or for winter maintenance purposes will be exempt from the closures.

Diversion routes via the A45, the A46, the M6 and the M1 and vice versa will be signed.

For further information please contact Richard Tansley on 07718 236 669.

Karen Eustace, an Officer in National Highways Limited.

National Highways Limited (Company No. 9346363) registered office: Bridge House, Walnut Tree Close, Guildford, GU1 4LZ. A company registered in England and Wales.

Goods Vehicle Operator's Licence

MDC Transport Limited of 88 Bridgeman Road, Coventry, CV6 1NR is applying for a licence to use Mitchell Potatoes Ltd, Boots Farm, Bourton on Dunsmore, Rugby, CV23 9QQ as an operating centre for 3 goods vehicles and 3 trailers

Owners or occupiers of land (including buildings) near the operating centre(s) who believe that their use or enjoyment of that land would be affected, should make written representations to the Traffic Commissioner at Quarry House, Quarry Hill, Leeds, LS2 7UE, stating their reasons, within 21 days of this notice.

Representors must at the same time send a copy of their representations to the applicant at the address given at the top of this notice. A Guide to Making Representations is available from the Traffic Commissioner's office.

Classified

PUBLIC NOTICES

Goods Vehicle Operator's Licence

A.E.Willows & Son Limited of Moor Farm, Clifton Lane, Thorney, Newark, Nottinghamshire NG23 7DG is applying to change an existing licence as follows: To add an operating centre to keep 2 goods vehicles and 2 trailers at White House Farm, Oxford Road, Princeshoppe, Stretton on Dunsmore, Rugby, CV23 9QD

Owners or occupiers of land (including buildings) near the operating centres who believe that their use or enjoyment of that land would be affected, should make written representations to the Traffic Commissioner at Quarry House, Quarry Hill, Leeds, LS2 7UE stating their reasons, within 21 days of this notice. Representors must at the same time send a copy of their representations to the applicant at the address given at the top of this notice. A Guide to Making Representations is available at: www.gov.uk/government/publications/a-guide-to-making-representations-objections-and-complaints-goods-vehicle-operator-licensing

PUBLIC NOTICES

Warwickshire County Council

ROAD TRAFFIC REGULATION ACT 1984, SECTION 14 TEMPORARY CLOSURE & NO WAITING NO STOPPING RESTRICTIONS AT A444 JIMMY HILL WAY, COVENTRY (MATCHES AT COVENTRY BUILDING SOCIETY ARENA)

Warwickshire County Council has made a Temporary Traffic Order: the effect of which will be to close the A444 Jimmy Hill Way, Coventry, to vehicular traffic, between the County Boundary with Coventry and its roundabout junction with M6 Junction 3, and to impose no waiting and no stopping restrictions thereupon.

The temporary restrictions are required in the interests of public safety due to anticipated large crowds exiting matches at the nearby Coventry Building Society Arena, and to assist with facilitating safe pedestrian egress therefrom.

The Order commences on 9 August 2025 and will end on 31 July 2026. However, it is anticipated that the temporary restrictions will only be in operation during those dates described in the Schedule below and may be subject to change in the event match dates are rescheduled.

An alternative route will be available for vehicular traffic via Pickards Way, Longford Road, Coventry Road, School Lane, Church Lane, Vicarage Lane, Ash Green Lane, Whiselwright Lane, Holbrook Lane, Holbrook Way, Jimmy Hill Way and vice versa. Pedestrian access will be maintained at all times and exemptions will be applied for the emergency services.

The Contractors dealing with this matter on behalf of Coventry Building Society Arena are APCOA (contact number: 07970 201399). To report any problems with these temporary restrictions please telephone 01926 412515.

SCHEDULE

• 9 August 2025	• 29 December 2025
• 12 August 2025	• 17 January 2026
• 23 August 2025	• 20 January 2026
• 13 September 2025	• 7 February 2026
• 27 September 2025	• 14 February 2026
• 18 October 2025	• 28 February 2026
• 25 October 2025	• 11 March 2026
• 4 November 2025	• 14 March 2026
• 22 November 2025	• 3 April 2026
• 29 November 2025	• 11 April 2026
• 13 December 2025	• 21 April 2026
• 26 December 2025	• 25 April 2026

S Duxbury, Director of Strategy, Planning & Governance, Shire Hall, Warwick CV34 4RL Date 8 August 2025

PUBLIC NOTICES

Goods Vehicle Operator's Licence

DK Packing & Casemaking Ltd trading as Yes! Logistics Solutions of Unit 5, Lawford Heath Industrial Estate, Lawford Heath Lane, Rugby, CV23 9EU is applying for a licence to use Unit 5, Lawford Heath Industrial Estate, Lawford Heath Lane, Rugby, CV23 9EU as an operating centre for 1 goods vehicle and 2 trailers.

Owners or occupiers of land (including buildings) near the operating centre(s) who believe that their use or enjoyment of that land would be affected, should make written representations to the Traffic Commissioner at Quarry House, Quarry Hill, Leeds, LS2 7UE, stating their reasons, within 21 days of this notice. Representors must at the same time send a copy of their representations to the applicant at the address given at the top of this notice. A Guide to Making Representations is available from the Traffic Commissioner's office.

PUBLIC NOTICES

Warwickshire County Council

ROAD TRAFFIC REGULATION ACT 1984 Warwickshire County Council has made the following Temporary Traffic Orders:

A423 SOUTHAM BYPASS, SOUTHAM Order Effect: The layby on the southbound carriageway of the A423 Southam Bypass, Southam, situated 100 metres before the Galanos roundabout, will be closed to vehicular traffic. In addition, a 40mph speed restriction will be imposed between Galanos Roundabout and the current 30mph speed limit at the Daventry Roundabout.

Reason for Order: To avoid the likelihood of danger to road users and to the contractors engaged in works in connection with the new Aldi Store.

Order Commences: 11 August 2025 for up to 18 months.

Anticipated Completion: 3 December 2025.

Contractor: Fitzgerald Contractors Ltd, Tel: 01213 260 402.

BASCOTE ROAD, BASCOTE HEATH

Order Effect: Road closed to vehicular traffic between its junction with Welsh Rd West to a point opposite to The Fox and Hen Public House.

Reason for Order: To enable stop tap renewal works.

Order Commences: 12 August 2025 for up to 18 months.

Anticipated Completion: 13 August 2025.

Access & Diversion: Welsh Road, Fosse Way, Southam Road, Ufton Hill, Bascote Road and vice versa.

Contractor: Chevron TM Ltd, Tel: 03300 080 820.

For all of the above temporary orders, pedestrian access to and egress from properties and land situated adjacent to the length of road to be closed will be maintained at all times. Vehicular access will be maintained where possible.

To report any problems with these works or for further details of our current & planned roadworks visit our website warwickshire.gov.uk/roadworksmap or call us 01926 412515.

S Duxbury, Director of Strategy, Planning & Governance, Shire Hall, Warwick CV34 4RL Date 8 Aug 2025

PUBLIC NOTICES

Rugby Borough Council Town and Country Planning Act 1990 (as amended)

Application Number R25/0623 COAL PIT LANE, LUTTERWORTH, RUGBY, COAL PIT LANE, LUTTERWORTH, CV23 0RT

Construction of a temporary solar farm, to include the installation of solar photovoltaic panels to generate electricity, with ancillary substations, inverters, perimeter stock fencing, landscaping and other associated works. This is a major development

Members of the public may inspect copies of the application, the plans and documents submitted with it online at: www.planningportal.rugby.gov.uk or in an electronic form at: Town Hall, Erveux Way, Rugby, CV21 2RR between the hours of 9.00 am and 5.00 pm Monday to Friday until 29 August 2025. Please note a planning officer would not be present. If you wish to make an appointment to discuss the application, please contact the case officer.

Any person who wishes to make representation to the above mentioned Council about the applications should make them online - www.planningportal.rugby.gov.uk (search for application number and select comment) - or in writing by that date to Chief Officer - Growth and Investment, Town Hall, Rugby, CV21 2RR.

If an application is determined by the Planning Committee, members of the public may have the opportunity to speak at the meeting. More details about public speaking are available from the Council or on-line at: www.rugby.gov.uk/speakingatplanning

For householder or minor commercial applications, in the event of an appeal against a refusal of planning permission, dealt with on the basis of representations in writing, any representations made will be sent to the Secretary of State, and there will be no further opportunity to comment at the appeal stage.

Nicola Smith Chief Officer - Growth and Investment MRPTI

PUBLIC NOTICES

GEORGE EDWIN HOWELL

(Deceased)

Pursuant to the Trustee Act 1925 any persons having a claim against or an interest in the Estate of the above named, late of 48 Torbay Road Coventry, CV5 8JW, who died on 07/07/2025, are required to send written particulars thereof to the undersigned on or before 09/10/2025, after which date the Estate will be distributed having regard only to the claims and interests of which they have had notice.

Angels Solicitors LLP, 117-119 New Union Street Coventry, CV1 2NY

PUBLIC NOTICES

DUNCAN CAMERON RAMSAY

FARRAK-LUCY (Deceased)

Pursuant to the Trustee Act 1925 any persons having a claim against or an interest in the Estate of the above named, late of Grange Orchard, Grange Gardens, Wellesbourne, Warwick, CV35 9RL, who died on 08/03/2025, are required to send written particulars thereof to the undersigned on or before 09/10/2025, after which date the Estate will be distributed having regard only to the claims and interests of which they have had notice.

Pennants, The Priory, School Road, Wellesbourne, Warwick, CV35 9RL

PUBLIC NOTICES

PUBLIC NOTICES

PUBLIC NOTICES

PUBLIC NOTICES

PUBLIC NOTICES

PUBLIC NOTICES

PUBLIC NOTICES

PUBLIC NOTICES

PUBLIC NOTICES

PUBLIC NOTICES

PUBLIC NOTICES

PUBLIC NOTICES

PUBLIC NOTICES

PUBLIC NOTICES

PUBLIC NOTICES

PUBLIC NOTICES

PUBLIC NOTICES

PUBLIC NOTICES

PUBLIC NOTICES

PUBLIC NOTICES

PUBLIC NOTICES

PUBLIC NOTICES

PUBLIC NOTICES

PUBLIC NOTICES

PUBLIC NOTICES

PUBLIC NOTICES

PUBLIC NOTICES

PUBLIC NOTICES

PUBLIC NOTICES

PUBLIC NOTICES

PUBLIC NOTICES

PUBLIC NOTICES

PUBLIC NOTICES

PUBLIC NOTICES

PUBLIC NOTICES

PUBLIC NOTICES

PUBLIC NOTICES

PUBLIC NOTICES

PUBLIC NOTICES

PUBLIC NOTICES

PUBLIC NOTICES

PUBLIC NOTICES

PUBLIC NOTICES

PUBLIC NOTICES

PUBLIC NOTICES

PUBLIC NOTICES

PUBLIC NOTICES

PUBLIC NOTICES

PUBLIC NOTICES

PUBLIC NOTICES

PUBLIC NOTICES

</

# Classified

TELEPHONE 01527 588688 FACSIMILE 01527 584371

## PUBLIC NOTICES

### PUBLIC NOTICES

#### Goods Vehicle Operator's Licence

Tamara Virdee trading as: Central Grab Services Ltd of 69 The Old Yard, Coventry, CV2 2BF is applying for a licence to use Lovitts Farm, Bulkington Road, Shilton, Coventry, CV7 9JT as an operating centre for 1 goods vehicle and 0 trailers.

Owners or occupiers of land (including buildings) near the operating centres who believe that their use or enjoyment of that land would be affected, should make written representations to the Traffic Commissioner at Quarry House, Quarry Hill, Leeds, LS2 7UE stating their reasons, within 21 days of this notice. Representatives must at the same time send a copy of their representations to the applicant at the address given at the top of this notice. A Guide to Making Representations is available at: [www.gov.uk/government/publications/a-guide-to-making-representations-objections-and-complaints-goods-vehicle-operator-licensing](http://www.gov.uk/government/publications/a-guide-to-making-representations-objections-and-complaints-goods-vehicle-operator-licensing)

## ANNOUNCEMENTS

### FUNERAL DIRECTORS

**Henry Ison & Sons Funeral Directors**  
A Funeral Plan to suit you



Plan ahead with a Choice Funeral Plan  
Visit [henryison.co.uk/choice](http://henryison.co.uk/choice)  
**02476 997 811**

Branches in Coventry (Binley Rd, Allesley Old Rd and Daventry Rd), Kenilworth and Leamington Spa



For terms, conditions, exclusions and limitations, visit [choiceplan.co.uk/terms](http://choiceplan.co.uk/terms)

If you have a message for a loved one, call our team on **01527 588688**

## SALES & WANTS

### MISCELLANEOUS

**BEDS** NEW Doubles £95 Singles £59 King size £159. Second hand doubles £49 Singles £29 Fridges £49 Freezers £59 Can deliver 07703 925662

**RECLINER CHAIR** electric rise & recline £169 Manual recline chair £60 High seated chair £40 Can deliver 07703 925662

**TRITON T80** 51 8.5kw electric shower g.w.o. £30.00. Tel 07941298266

**WATER** lily plants, beautiful large white flowers suitable for a natural pond or a water feature. Just £5.00 per large clump raising funds for Hillside Shire Horse Sanctuary. Tel: 07786853219

**RILEY 105** radiator grille excellent condition £50 offers considered 0121 744 7579

**2 boxed panel** spot lights as new £10 each 0121 744 7579

**BOXES** as new Lightning Strike Scooter aged 5+ £10 0121 744 7579

**STARSKY & Hutch** complete 1st & 2nd series, mint condition, £18, Tel: 07813 706 158 (Shirley area)

**DUCKLINGS** cute children/s 4 piece garden set with yellow handles; spade, fork, rake, shovel, £10, Tel: 07813 706 158 (Shirley area)

**WHITE** flowery pumps, pure white, size 8 / 41, new! £10, Tel: 07813 706 158 (Shirley area)

**BURGUNDY** red Converse pumps, size 8.5, mint condition, £18, Tel: 07813 706 158 (Shirley area)

**GEORGE** and Mildred complete tv series dvd box set, £25, Tel: 07813 706 158 (Shirley area)

**USED** caravan pegs x 61; 44 x red and 17 x yellow, £15, Tel: 07813 706 158 (Shirley area)

**LARGE** world stamp collection in 10 large binders neat clean £100 ono 07964 999255

**MEN'S Rally bike** 18 gears, nearly new £40 07801 061294

### MISCELLANEOUS

**MEN'S Rally bike** 18 gears, nearly new £40 07801 061294

**W A R P R O B E**, freestanding pine 3ft wide by 6 foot 4 tall 18" depth good condition £95 collect 01386 438846

**S H E R B O U R N E** recliner chair fully electric finished in Tuscan coffee £195 01386 438846

**2 Chair, 3 Seat** Settee, footstool 10 years old £150 Tel 07767847271 Stratford on Avon

**METAL 2** draw filing cabinet £20, 12 Horse Brasses £25 Tel 07767847271 Stratford on Avon

**COINS** Complete set of 10p alphabet coins Not been in circulation £75. 07905 864294

**P A N A S O N I C** TX802B55"OLED Superb picture Stand Remote Instructions Fruitless from new £2000 NOW £300 RUGBY 07747636890

**GOLF** Set 18 Clubs 24 Golf Balls Bag & Trolley (Fold up type) £40 07786598889

**OUTBOARD** engine Mercury 4HP good condition £200 07512162444

**VOLVO** xc60 lockable roof rack 2015 £45 07778705570

**VOLVO** xc60 bike rack towbar toball never used new condition £45 2015 07778705570

**PEAVY** bandit 75watt amp for guitar in good condition £150 07778705570

**GARDEN** shed for sale, £300 ono 6ft by 12ft. Genuine reason for sale. Call 07910 244 949 and ask for Jo

**CRYSTAL** drinks decanter and 2 crystal whisky glasses. Glasses have never been used. Excellent condition £12 tel: 01527 500217

**PANASONIC** full H / D 72x zoom camcorder with 2x 64gb SD card. Hardly used excellent condition £150. Tel 07528485727

**KASCO** Carry cart golf bag (used once), folding golf trolley, 6 men's RH clubs / irons. The lot £25. 0121 744 1003

### WANTED

**\*\*WANTED: Vinyl Records CDs Cassettes Vintage or New\*\***  
Seeking classic rock, jazz, indie and rare finds. Cash paid  
Call or text: 07765 142354 Or 01527 893992  
Or email: [welston@live.com](mailto:welston@live.com)  
Paul (Albatross & Doomed Records)

## SERVICES

### CONSERVATORIES & GLAZING

**DOUBLE GLAZING REPAIRS**  
Locks, Hinges, Handles, Glass, Windows or Doors  
New Doors/Windows Also Supplied/Fitted  
**07973 200 623**

### DRIVEWAYS

**COVENTRY DRIVEWAYS**  
• Block paving • Slabs • Porcelain Tiles & Sandstone Kils  
• Fencing • Gravel • Turf & Artificial Grass  
• Decking, Steps and more  
**7 Years Warranty on all projects**  
Payment only after completion  
**02476 274439 07740 101227**  
[www.spanglefish.com/coventrydriveways](http://www.spanglefish.com/coventrydriveways)



**GIVE A LOCAL EXPERT A CALL!**

### GARDENING SERVICES

**STUART'S GARDENING SERVICES**  
Landscaping & Tree Surgery  
Fencing, Slabbing, Turfing, Block Paving, Basins, Mowing, Decking, Roofing and Gutters, Mini-digger/Dumper  
Fully Insured. Registered carrier of waste.  
**FREE ESTIMATES**  
**02476 305992 • 07813 790889**  
**01788 211064**  
[www.stuarts-gardening-services.yolasite.com](http://www.stuarts-gardening-services.yolasite.com)

### HOME IMPROVEMENTS

## HANDY MAN

If you're looking for a fast and reliable service

Then call Lenny

- Plastering • Plumbing • Fencing
- Gardening • Flooring • Kitchens
- Bathrooms • Carpentry • Flat pack furniture
- Tiling • Painting

**02476 443 996**  
**07794 784 266**

**NO VAT CHARGE**

## SOMETHING TO SELL?

Advertise them in **The Observer** or **The Standard**

Simply fill in the coupon below, tick the appropriate box, enclose your cheque or credit card details if required, and we'll do the rest - Or alternatively email your free ad to: [freeads@bullivantmedia.com](mailto:freeads@bullivantmedia.com)

Free Lineage (Items upto value £500)  Paid for Boxed Ad (Items of any value)

Details of Item For Sale for Publication (No Pets or Livestock or Firearms please):  
(MAX 15 WORDS)  
.....  
Tel: .....

Details (Not for Publication):  
Mr/Mrs/Ms ..... Initials ..... Surname .....  
Address .....  
..... Postcode .....  
Tel: ..... Mobile .....  
Email: .....

I enclose cheque, payable to Bullivant Media Group Ltd, value £.....  
or alternatively  
Please debit my card for £..... Visa/Mastercard/Maestro/Delta  
Credit Card Number .....  
Exp: ..... Start: .....

Sec No: (Last 3 digits) ..... Issue No. (if applicable) .....

Send to Bullivant Media Group Ltd, Webb House, Church Green East, Redditch, Worcestershire. B98 8BP or email your advertisement to [freeads@bullivantmedia.com](mailto:freeads@bullivantmedia.com)

## KITCHENS

## S.W INSTALLATIONS

### Kitchens & Bathrooms

**FREE DESIGN & QUOTATION**

**QUALITY KITCHENS & BATHROOMS SUPPLIED & FITTED**

**PLUMBING, CARPENTRY, TILING, WORKTOP & DOOR REPLACEMENT**

(Supply & fit, supply only or fit only)

**LOCAL TRADESMAN 20YRS EXPERIENCE**

**NO JOB TOO SMALL**

**01926 773386 or 07971 684 353**

**Raise some extra cash and make someone else's day by selling your unwanted items**

If your item is valued at £500 or less - its **FREE OF CHARGE** in lineage (max 15 words)

But if you want your advertisement to really stand out or if your item is valued at over £500, you can place details in a boxed advertisement for just **£5.75 (inc Vat)**

**3 PIECE SUITE** brown leather, perfect condition as new **£550** can deliver Telephone **10234 567890**

(£5.75 incVAT example boxed advertisement)

**GOT A JOB NEEDS DOING?**

Our Classified pages are full of Experts waiting to help!

# Appointments

www.careerfinder247.co.uk

TELEPHONE 01527 588688 FACSIMILE 01527 584371



## Sales Administrator

Morris Homes | Rugby

We have an exciting opportunity for a Sales Administrator based in our regional Rugby office.

Are you highly organised, customer-focused, and passionate about property? We're looking for a proactive Sales Administrator to join our friendly New Homes team.

**Responsible for:**

- Supporting the Sales team with administrative tasks
- Managing customer documentation
- Liaising with site teams, legal teams, and production departments
- Updating CRM systems and preparing reports
- Handling customer queries with professionalism and care

**What We're Looking For:**

- Previous experience in property, sales administration, or customer service
- Excellent communication and organisational skills

- Strong attention to detail and ability to manage multiple tasks
- Confident using Microsoft Office and CRM systems (Coins)
- A team player with a positive, can-do attitude

**Why Join Us?**

- A competitive salary and benefits package, including opportunity to buy and sell holidays, pension, life assurance, free parking, and bonus scheme.
- Be part of a supportive, fun, and dynamic team
- Work in a fast-paced, rewarding environment

If you believe you have the skills and experience, we would love to hear from you so please send your CV to [careers@morrishomes.co.uk](mailto:careers@morrishomes.co.uk).

**No agencies please.**

## HOLY TRINITY CHURCH



STRATFORD-UPON-AVON

HOLY TRINITY • ALL SAINTS LUDDINGTON • ST HELEN'S CLIFFORD CHAMBERS

### Parish Nurse Vacancy

10 – 30 hours per week

£16.50 per hour, £32,298 pro – rata

This is an exciting opportunity for a NMC registered nurse to develop a new ministry of holistic health support in the Parish of Stratford upon Avon, in collaboration with the Minister for Nurture and Outreach and the church Pastoral Team.

The Parish Nurse will be based at Holy Trinity Parish Centre and will work with existing church contacts in the community, to signpost clients to relevant NHS and community-based health services, to help the client to understand their own health and well – being needs, and to advocate for them.

Key to the role, the Parish Nurse will also be able to provide spiritual and prayer support to their clients, when requested, and will be a bridge between the Church and the community. As such, it is a genuine occupational requirement for the candidate to be a committed practicing Christian.

For more information:

Contact: **01789 266316** or email: [hr@stratford-upon-avon.org](mailto:hr@stratford-upon-avon.org)

Application packs can be found on the church website: <https://www.stratford-upon-avon.org/staff-vacancies>

Closing date for applications: **Monday 25th August 2025**



# Position to fill?

**Bullivantmedia**  
GROUP LIMITED

We can offer you....

**GREAT LOCAL  
COVERAGE**

**IN PRINT  
& ONLINE**



Contact **Caroline** or **Kelly** on

**01527 588625 • 01527 588749**

[caroline.birkenhead@bullivantmedia.com](mailto:caroline.birkenhead@bullivantmedia.com)

[kelly.taylor@bullivantmedia.com](mailto:kelly.taylor@bullivantmedia.com)

# COVENTRY CITY TRANSFER NEWS

## City 'consider' club-record move for Hull star Hughes

**FOOTBALL:** COVENTRY City are reportedly 'considering' making a club-record bid for Hull City defender Charlie Hughes.

The Sky Blues have seen an initial offer worth £7million rejected by Hull, according to Sky Sports.

And Sky's James Savundra and Rob Dorsett report Coventry are considering making an increased offer of £8m plus add-ons.

If Coventry return to the table with the offer, it would mark a club-record bid - eclipsing the £7.7m paid to sign Haji Wright in August 2023.

Sky report that Coventry told Hull they were prepared to pay £6m up front with a further £1m in add-ons.

However, after City saw their first offer rejected, Sky believe Coventry could make another club-record offer for the defender.

Hull reportedly value the player at £10m and are reluctant to sell Hughes with the club currently under a transfer embargo.

The embargo prevents Hull from

signing players for a transfer or loan fee. The Tigers can only sign players on free transfers or on loan with no fee.

However, Hull were due to have their appeal against the embargo heard this week.

Beaten play-off finalists Sheffield United have also shown an interest in signing Hughes, according to Sky.

Hughes only joined Hull in August last year but impressed for the Tigers as he scored one goal in 27 appearances.

The 21-year-old centre-back spent time in the youth academies of both Manchester City and Liverpool before coming through at Wigan Athletic.

He scored five goals in 58 appearances for Wigan before joining Hull just after the start of the 2024/25 season.

Hughes won Hull's young player and goal of the season awards last term.

Coventry host Hull on the opening weekend of the Championship season on Saturday, August 9 with kick-off at 12.30pm at the Coventry Building Society Arena.

Chris Woakes had one arm in a sling during his time at the crease.



## Woakes bats with one arm for England against India in thrilling final Test match

**CRICKET:** WARWICKSHIRE all-rounder Chris Woakes heroically batted with his left arm in a sling as England suffered an agonising defeat against India.

Woakes appeared to dislocate his shoulder on the opening day of England's fifth Test match against India at The Oval.

However, the 36-year-old bravely emerged to bat on the final day with his left arm in a sling as he supported Gus Atkinson at the crease.

The pair needed 17 runs to

guide England to a series win only for Atkinson to fall with the hosts just seven runs short of victory.

Woakes did not face a ball but appeared in agony as he ran between the wickets on four occasions.

Atkinson shielded Woakes from the strike with the Warwickshire man prepared to bat with a left-handed stance if required.

However, Mohammed Siraj bowled Atkinson with a yorker to bring an end to the contest. India's dramatic six-run

victory meant the five-match series ended in a 2-2 draw.

England head coach, Brendon McCullum told Sky Sports: "He's sore. Good on him for walking out there."

"It was unbelievably brave, it sums him up. He'd do anything for the team. He's been around English cricket for a long time."

"For him to go out in the manner he did, he still pushed himself out there with one arm to try and get us across the line."

"That sums up the type of bloke he is."

## Van Ewijk linked with switch to Bundesliga side Wolfsburg

SKY Blues full-back Milan van Ewijk is a transfer target for Bundesliga side Wolfsburg.

Wolfsburg are reportedly 'pushing' to sign the 24-year-old, according to Sky Germany reporter Florian Plettenberg.

Plettenberg suggests Wolfsburg's talks with the player are at 'an advanced stage'.

However, a fee is yet to be agreed between the two clubs.

Wolfsburg finished 11th in the Bundesliga last season.

Van Ewijk has two years left on his deal at the Sky Blues.

The right-back has scored four goals and provided nine assists in 87 league appearances for Coventry.

He joined City from Dutch side Heerenveen for a £3.5million fee ahead of the 2023/24 campaign.

Coventry signed right-back Kaine Kesler-Hayden from Aston Villa earlier in the transfer window.

## Dausch joins Moore on loan at Forest Green for season

COVENTRY City youngster Aidan Dausch has joined National League side Forest Green Rovers on a season-long loan.

Dausch joins fellow young Sky Blues teammate Isaac Moore in making the switch to the New Lawn for the 2025/26 season.

The 19-year-old forward has made two appearances for Coventry in the Championship and has represented the United States of America at under-20 level.

He spent the second half of last season on loan at St Albans

City in the National League South where he scored two goals in nine appearances.

Forest Green boss, Robbie Savage said: "Aidan is an exciting talent that we're delighted to work with here at Forest Green."

"We're thankful to Frank Lampard and Coventry City for allowing us to bring Aidan and Isaac [Moore] to the football club."

"We're excited to see them both develop and help us in our quest for promotion."

## MI Racing riders triumph on national stage

**CYCLING:** TEAM MI Racing riders Layla Bradbrook and Nick Whitley both triumphed at the Welsh Mountain Bike Championships.

Bradbrook won the women's elite race at Dare Valley Country Park in Aberdare.

And Whitley claimed victory in the veteran 50-plus race. His wife Lynsey recently won the Welsh 40-plus age category race at the National Circuit Race Championships in Aberystwyth.

Elsewhere, the team's oldest rider, 78-year-old Mick Allen, raced in the British Masters Cycle Racing Road Bike Time Trial Championships in Leicestershire.

Allen rode to a second-place finish in the H category race for riders aged between 75 and 79-years-old in a time of 54 minutes 53 seconds.

Warwickshire-based rider Jack O'Neill finished third in the Ashby Ivanhoe road cyclists race.

And O'Neill also finished third in the Aerocoach Midlands Time Trial Championships over a 15-mile distance.

However, he claimed the 2025 Midlands Time Trial champion title for being the fastest rider from the Midlands region.

Elsewhere, age proved no barrier for Team MI Racing's veteran time trial riders.

With a combined age of 251, Mick Wills, Mark Wise, Simon Law and Joe Murray headed to South Wales for a double header.

The quartet raced on a 10-mile course near Abergavenny with Murray quickest to complete the time trial in a season's best time of 21 mins 12 secs.

Wise finished just behind in 21

mins 20 secs while Law finished in 21 mins 27 secs and Wills finished in 23 mins 5 secs.

Murray also claimed the prize for the fastest veteran rider.

The foursome returned to action near Raglan in Monmouthshire as Law finished fastest in 53 mins 38 secs while Murray clocked a season's best time of 54 mins 12 secs.

Wise finished in 54 mins 30 secs and Wills in 58 mins 36 secs.

Elsewhere, Nuneaton-based rider David Mead also claimed his third open time trial victory of the season in the Wyre Forest Cycle Racing Club 10-mile race.

Mead won the event in a time of 20 mins 11 secs with Leamington-based teammate Mark Wise in ninth in a time of 22 mins 23 secs.

## FA Cup victories for Sphinx and United

COVENTRY Sphinx advanced to the next round of the FA Cup with a 2-0 victory away at Romulus.

Goals from Kyle Carey and Djibril Diedhiou sealed victory for Sphinx at Coles Lane in the extra preliminary round tie.

Coventry will now host Dudley Town in the preliminary round on Saturday, August 16.

After a goalless first period, Sphinx broke the deadlock on 51 minutes when Carey took the ball into the penalty area and coolly found the bottom right corner.

And Sphinx sealed their place in the next round one minute from time as Diedhiou cut in from the left and drilled a shot through the legs of the Romulus goalkeeper.

Sphinx begin their league campaign against Mickleover on Saturday, August 9 with kick-off at 3pm at the Cameron Slater Arena.

Elsewhere, a late goal from Ben Vallance earned Coventry United a 1-0 away win at Shifnal Town in the FA Cup.

Vallance's looping cross found

the net on 80 minutes at the Acoustafam Stadium to settle the extra preliminary round tie.

Coventry will now travel to FA Cup debutants Abbey Hulton United in the preliminary round on Saturday, August 16.

The game's only goal came 10 minutes from time when Vallance's attempted cross from the left found the top right corner of the net.

United are next in action against Histon FC on Saturday, August 9 with kick-off at 3pm at Bridge Road.

**CRS LTD**  
Spring Lane South, Malvern WR14 1AT  
ATF's are the **ONLY** legal way to scrap your vehicles  
**BUYERS**  
of all SCRAP Metals and SCRAP Vehicles  
The **ONLY** authorised treatment facility in Malvern!  
Best Prices Paid • Collection & Skip Drops Farm  
Equipment, Copper, Brass etc. • 50 Ton Weigh Bridge  
**ID REQUIRED - 01684 578081**  
www.crs-malvern.co.uk

# Observer SPORT



9 772040 128006  
Published by Bullivant Media Group Ltd, Webb House,  
Church Green East, Redditch, Worcestershire, B96 8BP  
Printed by Newsquest, Newspaper House, Osney  
Mead, Oxford, Oxfordshire, OX2 0EJ

**VINYL RECORDS WANTED**  
Buying since 1978  
Get your cash TODAY!  
I will come to you  
**Phone PAUL**  
01527 893992 | 07765 142354

www.rugbyobserver.co.uk

BRINGING YOU **ALL THE LATEST** SPORTS NEWS AND VIEWS FROM THE AREA

## Valley and Borough knocked out of FA Cup

by **Aaron Sutcliffe**  
aaron.sutcliffe@bullivantmedia.com

**FOOTBALL:** RUGBY Town exited the FA Cup at the first hurdle after slipping to a 2-1 defeat at Coton Green in the extra preliminary round.

Valley suffered their first defeat against lower league opposition in the FA Cup since 2011.

FA Cup debutants Coton Green play one level below Valley at Step Five as new Rugby boss Grant Joshua tasted defeat in his first game in charge of the club.

Goals from Corey Powell and Josh Beeson put Coton Green in command only for Luke Fox to see red for the hosts seven minutes from time.

Rugby made the most of the extra man to halve the deficit as Harrison Nee

finished on the rebound after he saw his initial penalty saved.

However, the goal proved too little too late as Valley were made to pay for missing a number of chances throughout the contest.

Valley made the worst possible start as the visitors failed to deal with a ball into the box from the right and Powell lashed home from close range after just seven minutes.

And the hosts doubled their lead on 81 minutes as substitute Beeson lobbed the ball over Ben Newey from 20-yards out following a counter attack.

The home side then had Fox sent off after he picked up a second yellow card for a foul on the edge of the penalty area.

And Valley won a penalty two minutes from time after Nee drew a foul in the box only to see his spot kick saved before he tucked away the rebound.

The visitors piled on the pressure in their

search for an equaliser but could not find a way through in the remaining minutes.

Valley begin the Northern Premier League Midlands season with a home game against Carlton Town on Saturday, August 9 with kick-off at 3pm at Butlin Road.

Elsewhere, Rugby Borough also exited the FA Cup at the extra preliminary round stage following a 1-0 defeat against Kidsgrove Athletic.

The game's only goal came on 17 minutes as Macauley Taylor's strike settled the contest at the Fitzjohn Stadium.

Borough and Kidsgrove both play at Step Four.

The hosts broke the deadlock just past the quarter-hour mark when Taylor received a quick throw-in and drove forward before finishing past Carl O'Neil.

Rugby begin the NPL Midlands season against Boldmere St Michaels on Saturday, August 9 kick-off at 3pm at the Amber Arena.



Rugby Golf Club's ladies team pictured from left to right: Liz Twynholm, Judith Pegler, Susan Jones, Sarah Green, Helen Cole, Susan Graham and Deborah Harrad. s

## Ladies into last four of Taskers Trophy

**GOLF:** RUGBY Golf Club's ladies have reached the semi-finals of the prestigious Taskers Trophy.

The team of Liz Twynholm, Judith Pegler, Susan Jones, Sarah Green, Helen Cole, Susan Graham and Deborah Harrad remain in contention to lift the Burtoft Trophy.

Competing in the women's inter-club competition, Rugby's ladies beat Burton-on-Trent by a score of five and a half to one and a half

to book their place in the semi-finals.

Rugby have beaten teams from Charnwood Forest, Longcliffe and Chesterfield en route to the last four.

The Taskers Trophy is a team knockout golf competition for men and women aged 50-years-old and above.

The competition aims to donate up to 100 per cent of teams' entry fees towards junior golf.

# CASHBROKERS

LEAMINGTON SPA

PAWNBROKING LOANS  
SCRAP GOLD & SILVER  
BUY BACK  
JEWELLERY & WATCHES  
COINS & BULLION

**CASH PAID**  
**FOR GOLD, SILVER,  
COINS & BULLION**



**01926 258252**

144 Parade, Leamington Spa, CV32 4AG

www.cashbrokersleamingtonspa.co.uk

