

WANTED
Motorcycles and Scooters
 Any cc, condition or age,
 good prices paid
 07944 781 933 | 01926 257 643

Young artists have lots to sing about

by **Andy Morris**
 andy.morris@bullivantmedia.com

A HEARTFELT community anthem has been created by youngsters in Rugby.

The School of Rap Rugby has unveiled Love Rugby, an uplifting anthem created for this year's Love Rugby Festival.

Love Rugby is described as a heartfelt tribute to the town's heritage, community spirit, and intergenerational pride.

Funded by a \$5,000 grant from Warwickshire's Police and Crime Commissioner (PCC), the project

was delivered in partnership with Newbold on Avon Rugby Club and led by the School of Rap, a Rugby-based Community Interest Company which aims to improve the lives of young people.

The track was written and performed by participants during Friday evening sessions at the club, led by the School of Rap team.

Featuring a range of local voices, the song, which opens with a dedication from Mayor Barbara Brown, offers a young person's perspective on the town's values of unity and resilience while celebrating its past, present, and future.

Coun Tony Freeman, Chair of

the Newbold on Avon Community Partnership, helped secure the funding from the PCC and collaborated with Sven to bring the project to life.

He said: "I was delighted to see that providing opportunities for youngsters to create and perform music produced such outstanding results."

"This was a great collaboration with a fantastic outcome for all concerned."

Sven Lichtenberg from the School of Rap said: "Using the therapeutic power of music - particularly rap and songwriting - engages those at risk of criminal or antisocial behaviour."

"Through creative expression, mentorship, and safe, supportive environments, we help young people build confidence, process emotions, and find constructive outlets for their energy and experiences."

Rugby MP John Slinger said he was thrilled to see young people coming together to celebrate their pride in the town through music.

He added: "This project is a brilliant example of what's possible when communities are supported with the right funding."

"To the young people at the heart of it - you've done something amazing, and I hope you keep creating, collaborating, and enjoying everything music has to offer."

Efforts are already under way to continue the project in 2026. Visit <https://tinyurl.com/mpjfxas2> to listen to Love Rugby.



Wolly and Sally shared their circus skills at the Play Day. Picture by Marcus Mingins 3225010MMR11

CLOWNING around - kids let off some summer holiday steam at Whitehall Recreation Ground during a day of absolute 'playhem'. Street entertainers Wolly and Sally shared their circus skills with children at the National Play Day event - the theme of which was 'spaces for play', to recognise every child's right to accessible play. Kids took on inflatable slides and obstacles, a climbing wall, soft archery, arts and crafts, parkour workshops, early years activities, circus workshops, and a mash up of play and multisport. See pages 12 and 13 for more pictures.



Coun Tony Freeman and the School of Rap's Sven Lichtenberg collaborated to bring the project to life.

DRIVES4U Tel: 0800 3032559
 Mob: 07773 911552
www.drives4u.co.uk

Are you looking to improve or enlarge your driveway or patio?

We can provide you with a beautiful new patio or driveway in Coventry, Bromsgrove, Redditch, Solihull, Leamington, Kidderminster and Birmingham

5 Year guarantee

- We've designed and built just about every shape and size of driveway and patio you can imagine, so we will not be phased by your project.
- We strive to achieve 100% satisfaction and unlike other driveway companies, with us you pay absolutely nothing upfront.
- Give us a call and you could save upto £1000

Tel: 0800 3032559 | Mob: 07773 911552 | www.drives4u.co.uk

VJ Day anniversary to be marked at event

A FREE family event in Rugby will mark the 80th anniversary of Victory in Japan (VJ) Day today (Friday August 15).

The Picnic in the Park event takes place at Caldecott Park from 11am to 3pm, with residents invited to bring a picnic and a blanket to join in the celebrations.

Visitors can enjoy a range of vintage garden games at the event, including skittles and a coconut shy, while the council's Play Rangers promise to bring a host of fun and games to proceedings, including a scavenger hunt, a sensory tent and a bubble factory.

With music from the park's bandstand and 30 picnic tables set to be laid out for visitors, the Picnic in the Park aims to recreate the atmosphere of VJ Day in 1945, when Japan's surrender on August 15 brought the Second World War to an end.

Coun Maggie O'Rourke, Rugby Borough Council's spokesperson for partnerships and wellbeing, said: "VJ Day brought one of the darkest chapters of our history to a close, prompting spontaneous celebrations across the country, from street parties to parades.

"The Picnic in the Park event aims to capture that community spirit and sense of celebration, while also remembering the sacrifices made by so many during six years of conflict."

Later on VJ Day, the Mayor



Barbara Brown will attend a Sunset Service at the Hillmorton War Memorial.

Organised by local branches of the Royal British Legion and led by the Reverend Steve Gold of St John the Baptist Church, the service starts at 8.45pm and includes the lighting of a beacon and a Lamp of Peace as the sun sets.

Residents who attend the service have been invited to bring a tea-light to light and leave at the War Memorial at the end of the service.

Coun Brown said: "While VJ Day was a time for celebration in 1945, it remains a day to remember those who made the ultimate sacrifice fighting for our freedom during the Second World War.

"I'm honoured to have been invited to the Royal British Legion's Sunset Service and look forward to joining the community in a quiet moment of remembrance."

Mayor Barbara Brown at the VE and VJ Day memorial bench at the War Memorial at Whitehall Recreation Ground with (left) John Howes, Rugby Borough Council's green space and biodiversity manager, and Coun Neil Sandison, Rugby Borough Council's Liberal Democrat group spokesperson for partnerships and wellbeing.



PHOENIX COACHES

| | Adult | Child |
|--|--------|--------|
| August | | |
| 19th Cotswolds Market & Broadway | £27.00 | £22.00 |
| 21st Blist Hill | £41.00 | £29.00 |
| 24th Great Yarmouth | £29.50 | £24.50 |
| 27th Sandringham House | £50.00 | £45.00 |
| 30th Skegness | £27.50 | £22.00 |
| September | | |
| 2nd Pub Lunch | £30.00 | £24.00 |
| 6th Cheshire Oaks | £27.50 | £22.50 |
| 9th Lincoln | £27.00 | £22.00 |
| 20th Llandudno | £29.50 | £24.50 |
| 23rd Tewkesbury | £25.00 | £20.00 |
| October | | |
| 4th Gloucester Docks & Quays | £24.00 | £19.00 |
| 11th Windsor | £27.50 | £22.50 |
| 18th Blackpool Illuminations | £29.50 | £24.50 |
| 25th Camden Market | £29.00 | £24.00 |

www.phoenixcoaches.org.uk

Tel No 02476 350 811. 50 Southfield Close, Nuneaton. CV10 OBE

Special thanks for 10 years of safe crossing

A POPULAR lollipop man who has been serving the same Lutterworth school for 10 years has been thanked at a special assembly.

Staff at John Wycliffe Primary School surprised Rob Woodward at the end of last term by holding a celebration to mark a decade of safely shepherding kids across the road.

The children gave their beloved 'Mr Rob' gifts, made giant cards and sang their hearts out in the assembly.

Rob said he was 'really pleased' when he realised the school was holding a celebration for him, adding: "I was a bit surprised as they asked me to help move furniture!"

He says his favourite part of the job is helping people and seeing the children smile.

He continued: "The children greet me in the morning with 'Morning Mr Rob'. My relationship with them is very good - even if they see me in town they'll say 'Hello Mr Rob!'"

He even once cheekily convinced one of the children that he lived in the tree on his crossing.

And he says he wouldn't change his job for the world.

"Sometimes I wonder if it's worth it with all the traffic problems - but even if I won the lottery I'd still carry on," he said. "10 years ago, I never would have been able to get up on the stage like I did at the assembly. Doing this job has really helped me build my confidence."



A school spokesperson described Rob as a 'quiet hero' and 'pillar of the local community'.

They added: "At the start of the assembly, the children were all asked 'who keeps us safe and is really kind?' They unanimously answered 'Mr Rob!'. I think that speaks volumes to the wonderful impact he has."

"Mr Rob has been a core part of the John Wycliffe Primary School community and our safety superhero for 10 years, and we wanted to do something to show our appreciation for his dedication and hard work."

"Mr Rob has kept hundreds of children safe over the last decade, and his cheery and kind nature make him a firm favourite with all of the children."

Long-serving lollipop man Rob Woodward is a 'pillar of the community' at John Wycliffe Primary School.

PUBLIC NOTICES



For all your latest information on Planning Proposals, Traffic Notices, Goods Vehicle Operator Licences, Licences To Sell Alcohol and Probate Notices...

See page 29



New £22m housing development looks set for autumn arrivals

THE FIRST tenants look set to move into Rugby Borough Council's (RBC) new £22million Navigation Way development in the autumn.

The development, on the site of Biart Place, includes 100 new homes - 60 one and two-bedroomed apartments, 20 maisonettes and 20 two, three and four-bedroomed houses.

Construction company Willmott Dixon is due to hand over the development's first phase of new homes to the council next month, with the first tenants set to move in soon after.

The council will allocate all homes at Navigation Way to eligible households registered on the council's housing waiting list.

Sustainable design and construction techniques have been used, with homes benefiting from electric vehicle charging points, solar panels and air source heat pumps.

The development has been backed by a \$6.8million grant from Homes England's Affordable Homes Programme 2021-2026, together with a further £2million from the Government's Getting Building Fund.

Coun Claire Edwards, RBC's spokesperson for communities and homes, regulation and safety, said: "The grant from Homes England has allowed us to allocate all homes at Navigation Way for social hous-

The £22million Navigation Way development is being built on the site of the old Biart Place tower blocks, which were demolished due to being beyond economic repair.



ing, which means every home will be allocated to eligible households registered on the council's housing waiting list.

"With the first phase of 51 modern, energy efficient homes set to be handed over to the council by Willmott Dixon next month, we're

looking forward to welcoming the first tenants to Navigation Way in the autumn, the start of a new chapter for the former Biart Place site."

Councillors first approved plans to develop the site nearly seven years ago after structural surveys

revealed both of Biart's tower blocks - which comprised 124 one and two-bedroomed flats - were beyond economic repair.

A year ago, councillors voted to name the new road serving the development Navigation Way to celebrate the role the railway and

canal networks played in Rugby's rapid industrial growth in the 19th century.

The development's four apartment blocks were named Clayton House, Davenport House, Sherrard House and Lindon House after pupils from Avon Park School were invited to suggest the names.

All four names were inspired by Rugby's iconic status as the birthplace of the game, with John Clayton, Alfred Davenport and Charles Sherrard all pupils at Rugby School who played for England against Scotland on March 27, 1871 - the first ever rugby international.

Lindon House commemorates the work of Rugby leathermaker Richard Lindon, who manufactured the first rugby footballs at his shop in Lawrence Sheriff Street.

Coun Jerry Roodhouse, leader of Rugby Borough Council's Liberal Democrat group, said: "This project has come about thanks to the hard work of officers and a clear wish for the council to deliver council housing in Rugby."

"The development has been built to the latest energy standards. The task now is to work with our new tenants to ensure they are part of the community."

The second phase of homes at Navigation Way looks set to be handed over to the council in the new year.

High praise for prison after latest inspection

A PRISON near Rugby has 'shown what is possible when rehabilitation is placed at the heart of prison life', according to a new report.

In its 2024-25 annual report, the Independent Monitoring Board (IMB) for HMP Rye Hill found that the prison, privately-run by G4S, was 'delivering exceptional safety outcomes' and 'developing successful prisoner-led initiatives and a sense of pride in the prison community'.

The prison, near Willoughby, successfully transitioned from category B to the lower-security category C in March with few transfers to other prisons - an achievement which the report says reflects 'careful management, stability, and a strong rehabilitative ethos'.

Inspectors praised the prison for reducing the number of self-harm incidents from 343 to 235, despite a population increase.

They found drug use to be 'exceptionally low' and levels of violence reduced, with prisoners generally reporting feeling safe.

The report also singled out positive staff-prisoner relationships, prisoner-led initiatives, and key worker sessions for praise.

IMB Rye Hill Chair, Pete Griffiths, said: "This is a largely exceptional prison."

"During the reporting year the operational capacity increased from 664 to 840 and the prison transitioned from a category B to a category C prison."

"Maintaining a stable regime throughout the transition has taken commitment, professionalism, compassion and a lot of hard work."

An HMP Rye Hill spokesperson said: "We are pleased that the IMB recognises the dedication of our staff and our commitment to rehabilitate prisoners."

The report also raised national concerns about those serving Imprisonment for Public Protection (IPP) sentences, whose mental health 'continues to be negatively impacted'.

It added: "Despite commendable individual work being completed with IPP prisoners at



Picture by Loxo Creative for G4S

Rye Hill, many feel stuck or unclear about how to progress. The compassionate release process is still unnecessarily difficult, and three out of four applications this year were not completed before the prisoner died - raising concerns about delays in decision-making and the requirement for a narrow medical prognosis window."

Campbell Robb, Chief Executive of social justice charity Nacro, said: "The poor mental health of people serving IPP sentences and the difficult process for compassionate release is extremely worrying and something that is common across the prison estate."

"The indefinite nature of IPP sentences is cruel and leaves families devastated, which is why we continue to call for them to be reviewed, and for better support for those affected by them."

A Ministry of Justice spokesperson said: "It is absolutely right that the IPP sentence was abolished, and we have significantly improved support for those still in custody, with greater access to rehabilitation and mental health support. There is more work to do as we reduce the number of IPP offenders in custody but we will only do so in a way that protects the public."

ARBURY HALL

NUNEATON

AUGUST BANK HOLIDAY

OPENING

The Hall, Gardens and Stable Tearooms will be open on Sunday 24 August & Monday 25 August 2025 from 1pm until 6pm (last tour 4.30pm)

Dogs on leads are welcome in the gardens.

For further details - 01676 540529

www.arburyestate.co.uk

'Stronger checks' call for elderly drivers

THE FAMILY of a south Warwickshire couple killed after they were hit by an out-of-control car have called for "stronger checks" on elderly drivers.

The Reverend Stephen Burch and his wife Katherine, both 65, were hit by 81-year-old driver Humphrey Pickering, who also died, in the village of Beaumaris on Anglesey in August last year.

An inquest in North Wales heard Mr Pickering, from Colwyn Bay, had "applied the accelerator rather than the brake" which sent his powerful automatic Audi A8

by Ian Hughes
ian.hughes@bullivantmedia.com

careering down the narrow road before hitting the couple who were walking along the street.

The inquest was told Mr and Mrs Burch, from Alcester, had no chance to react, while Mr Pickering was not wearing a seatbelt and was driving "well in excess" of the 20mph speed limit at the time.

North West Wales senior coroner Kate Robertson said Mr Pickering was unable to correct his pedal error in time, having accelerated from "25mph to 55mph in

the five seconds before the collision".

Speaking after the inquest, the couple's family described their grief as "monumental" and thanked everyone who "showed care and courage at the scene."

They said: "The circumstances of our parents' death are tragic and deeply painful. While we trust they are now with God, the loss to us is immeasurable.

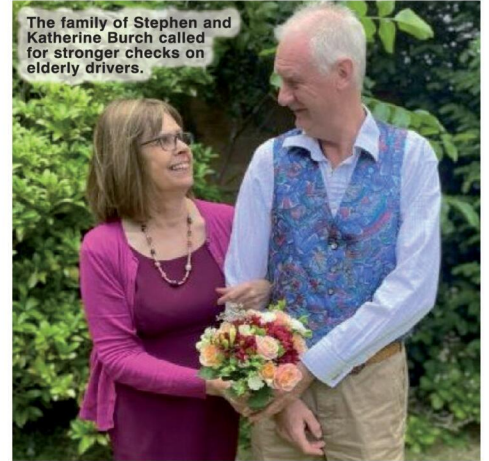
"They were struck and killed in a collision involving a high-powered automatic vehicle, driven at speed through a 20mph street.

"It raises painful but

important questions about the safety of both powerful and automatic vehicles in the hands of elderly drivers, and the urgent need for stronger checks and safeguards to prevent such tragedies in future.

"Our grief is monumental. Yet this year has also been marked by hope and faith. Our parents lived with unshakeable confidence in God and in the death and resurrection of Jesus, a peace that continues to sustain us and bring comfort in the midst of our loss.

"We are deeply grateful to the emergency services



The family of Stephen and Katherine Burch called for stronger checks on elderly drivers.

and all who showed care and courage at the scene.

"We also recognise the trauma experienced by wit-

nesses and sincerely appreciate the many expressions of sympathy and support we have received."



The hunt continues for the body of Jesse Richards.

Police continue search for murdered Jesse 16 years on

DETECTIVES are renewing their appeal for information to find the body of a murdered man which may have been dumped in south Warwickshire 16 years ago.

Jesse Richards was killed in Cleeve Prior near Evesham on July 31 2009, in a violent attack over a drugs debt. West Mercia detectives say they are still as committed today as they were 16 years ago to find

his body. They are urging anyone with any information or who knows where his body is to make contact.

His mother Lucy Richards remains resolute that for as long as she is alive, she will hold out with the hope that he will be located and that she will finally be able to lay him to rest.

Jesse would now have been 56 and his mother is all too aware that time

is ticking. Jesse also left behind brothers, a sister and children of his own.

In 2012, five men were jailed in connection with his death and were collectively sentenced to more than 50 years in prison despite his body never being found - but they have all since been released.

Detectives believe Jesse's body could have been hidden somewhere in south Warwickshire.

Det Insp Gareth Evans, from West Mercia Police, said: "Despite the time that has passed, the desire to assist in the recovery of Jesse Richards remains strong because it's the right thing to do.

"It's said that a parent should not outlive their child but to have them taken with no further trace is a living nightmare Lucy Richards must live with every day.

"All those convicted of involvement in Jesse's death have since been released from their custodial sentences, Jesse's family still live with their loss and inability to put him to rest.

"Someone knows what happened to Jesse and where he is.

"By not coming forward, you are depriving a family of the closure they so need and desire."



 **SIMPSON**
FINANCIAL SERVICES

Thinking about
retirement?

Get your finances in order with award-winning independent financial advice in Leamington Spa.

Book a free retirement planning consultation with one of our experts today!

☎ 0800 6342 111

✉ office@simpsonfs.co.uk

🌐 www.simpsonfs.co.uk

Follow us    

Find out more



Sex offender given seven years in jail

A SEX offender from Coventry has been jailed for assaults against two children and a woman.

Graham Cockerill, 67, of Elwy Circle in Ash Green, was found guilty at Warwick Crown Court of three counts of sexual assault on a girl under 13 by touching, two counts of indecent assault on a girl under the age of 14, and one count of indecent assault of a female over 16. He was jailed for seven years.

In 2022, West Midlands Police's Child Abuse, Trafficking and Exploitation (CATE) Team launched an investigation into Cockerill, who was reported to have sexually assaulted three women.

The first victim reported assaults by Cockerill taking place in the Coventry area between 2016-2022 when she was under 13.

Another victim made themselves

known to investigators and reported offences by Cockerill throughout the 1970s, between the ages of nine and 14, in the Meriden area.

A further victim was identified who was aged in her 40s at the time, but passed away in 1995 and never reported the offences to police.

Cockerill was found guilty in June and sentenced last week. He was also given a 10-year restraining order for one of the victims, a 15-year Sexual Harm Prevention Order (SHPO), and will also be on the Sex Offenders' Register for life.

Det Con James Manders, formerly of West Midlands Police's CATE team, said: "This case demonstrates that in certain circumstances, a victim need not necessarily even be alive for us to obtain a conviction."

"Despite 30 years having passed since her death, and having never

reported the crime to the police, we worked tirelessly to gather evidence to ensure we could bring Cockerill to justice.

"Thankfully, the Crown Prosecution Service (CPS) decided to progress with this case thanks to statements from living witnesses about the victim and the offender disclosing details of the crime to them.

"I'd like to thank the CPS lawyer who decided to authorise this charge and allow a jury to make up their minds about Cockerill's guilt.

"The victims and witnesses in this case are amongst the most extraordinary people I have had the pleasure of knowing during my policing career.

"They showed great strength and courage throughout the process. As always, the service we provide to victims will always be at the fore-



Sex offender Graham Cockerill assaulted two children and a woman.

front of any investigation, whether living or deceased."

Victims of sexual offences in Warwickshire can report offences at www.warwickshire.police.uk/ro/ or by calling 101. Always call 999 in an emergency.

Visit <https://safeline.org.uk> for

free, independent and confidential support for anyone affected by, or at risk of, sexual abuse.

Visit <https://tinyurl.com/38d2vytj> for Warwickshire Police's support and advice page for victims of rape, sexual assault and other sex offences.

Police boss hails Priority Crime Team for bringing criminals to justice

MORE than 50 wanted people have been arrested by Coventry's South North West Priority Crime team in July alone.

Last month, the team arrested 54 people over various offences, including individuals wanted on suspicion of burglary, robbery, theft and recall to prison.

Using a combination of high

visibility patrols and plain clothes operations, the Priority Crime team works to arrest people wanted by police or who are known for prolific offending.

They included an individual wanted for recall to prison and theft from motor vehicle, two people wanted for a number of burglaries and attempt burgla-

ries, and an individual wanted on suspicion for shop theft.

Local policing Detective Inspector Andrew Mitcham said: "The Priority Crime Team have achieved great results over the past couple of months. Although you may not always see the team in uniform, they are working hard in the community to bring

offenders to justice who cause harm to our local communities.

"The team work in line with our local priorities which are currently to reduce shop theft, disperse anti-social behaviour, and disrupt drug dealing. They work alongside neighbourhood and response officers to gather intelligence, complete arrest

attempts, and warrants across the local policing area.

"Reports from our local residents help us get offenders off our streets quicker, and help us build a better picture of where, and what, crime is happening. Remember to report any suspicious activity to us on 101 or online."

Upgrade to
Quartz worktops
for **Free!**

Summer
SPECIALS

50% OFF

kitchens

Nothing to pay until 2026

BKU PROUD WINNER 2025

We're BKU's Independent Kitchen Retailer of the Year!

★★★★★

"So pleased with my Aristocraft kitchen, can't fault them."

Leamington Spa showroom
103 Warwick Street
Leamington Spa
CV32 4RJ
01384 262710
www.aristocraft.me

ARISTOCRAFT
Est.1982

A Notable donation makes sweet music

ROCK on! A neuro-diverse rock band in Coventry is making big plans after receiving a £1,500 donation from a housebuilder.

The Notables – a charity which supports up to 200 marginalised people in the community with music outreach sessions and gigs – received the donation from Barratt Homes.

The group has around 30 people with learning difficulties who regularly attend its weekly meetings and rehearsals at Canley Community Centre.

Dave Claridge, project manager and musical director for The Notables, said: “We’re asking all

of our members for suggestions as to how we will spend the £1,500 kindly donated by Barratt Homes.

“One thing we have discussed is the possibility of hosting another big show to raise awareness of autism, social inclusion and cultural diversity. We have done several of these larger events in the past, and each has been very well attended and successful. Feedback has been overwhelmingly positive.”

The group was founded in 1997 when Margery Jones asked Dave if he would be open to forming a band with people with learning difficulties, as her son, Lewis, was a keen and accomplished singer-songwriter.

Dave added: “Lewis was a found-

ing member and still sings with the band to this day. Sadly, Margery passed away in 2023 at the age of 91, but is still remembered fondly by our members for her kindness, humour, passion for music and performing arts, and for all she did in her life for marginalised people.

“What started as a small band has grown into a charitable group of over 25 core group members, volunteers and community musicians who entertain and support many disadvantaged people similar to themselves in the community who can access gigs, social events and our fully interactive music outreach sessions at day centres, schools and residential homes.”



Barratt Homes has donated £1,500 to The Notables.

Barratt Homes’ donation came from its Community Fund scheme via The Barratt Redrow Foundation.

Adrian Evans, managing director at Barratt Homes West Midlands, said: “We are proud to support The Notables and their dedication to making music accessible to peo-

ple of all backgrounds. We are excited to see how the group will continue to grow, and we hope that anyone interested in this band will take the time to attend one of their concerts and show their support.”

Visit the website at www.notables.org.uk for more information about The Notables.



Staff, pupils and councillors at the new mural.

School renovation taking shape

WORK is progressing at pace on the renovation of Woodlands School in Coventry.

The scheme, which started in January and is being delivered by Coventry City Council (CCC) in partnership with Clegg Construction, will modernise the existing site.

Over recent months, teams of partitioners, plumbers and electricians

have been on site, and plastering is due to start shortly. Joinery and decorating works are scheduled to follow.

At the end of the school term in July, pupils, staff, Woodlands ward councillors and council officers came together to celebrate the installation of a new mural at the site entrance, designed by the school’s students.

Coun Dr Kindy Sandhu,

CCC’s Cabinet Member for Education and Skills, said: “This renovation is about more than bricks and mortar – it’s about building a space where children can thrive.

“It’s fantastic to see pupils contributing to the project through their own artwork and gaining a sense of pride in their school’s future.”

The new school is due to be completed in 2026.

INTERNATIONAL METALS & CABLE RECYCLING LTD

We purchase all Ferrous and Non Ferrous Metal Batteries and Cables

Collection Service Available

Long Marston Road, Long Marston, Stratford Upon Avon, Warwickshire, CV37 8AQ

01789 721 288

david@imrltd.co.uk

Open Mon/Fri - 8am - 5pm



Runners from KT FC & NC Fab 55 took on the 10km Two Castles Run to raise funds and awareness for SOS Silence of Suicide.

Runners answer charity SOS

RUNNERS from Kenilworth Town Football and Netball Club raised £3,652 for a charity founded in the town.

Affectionately known as the KT FC & NC Fab 55, the runners took on the 10km Two Castles Run, between Warwick and Kenilworth castles, to raise awareness for SOS Silence of Suicide.

Michael Mansfield KC and his wife Yvette Greenway-Mansfield created the charity to give voice to those who feel silenced by stigma, shame or suffer-

ing, following the death of their daughter Anna.

They said: "To return to Kenilworth and receive such warmth, support and solidarity from the community that witnessed the charity's earliest days was profoundly emotional and humbling.

"The funds raised will go towards helping us to provide 2,435 minutes of life-saving conversations and support."

Marcus Leek, chair of Kenilworth Town Football & Netball Club, said: "Our Fab 55 set out to raise

money, but they've done so much more.

"They've helped break down the silence that surrounds mental health and suicide.

"As a club rooted in our community, we are proud to support causes that matter and to stand with a charity born right here in Kenilworth is brilliant.

"This charity now carries even more meaning for us all."

Visit www.sossilenceofsuicide.org for more information about SOS Silence of Suicide.

Have your say on how council will be reshaped

RESIDENTS are being urged to have their say on a major planned shake-up of local government in Warwickshire.

The Government wants to simplify the structures of councils and the local government reorganisation (LGR) is the process in which responsibilities of local authorities are reconfigured in many places across England.

Currently in Warwickshire, some services, including highways and transport, education, adult social care and children's services, are run by Warwickshire County Council (WCC), while others, like bin collections, planning, and housing, are run by

by Ian Hughes
ian.hughes@bullivantmedia.com

the local district or borough councils.

WCC leader George Finch said: "This is a big opportunity to make local services better, simpler and more efficient.

"It is an opportunity to create a new system of local government that works for local people – one that is easier to understand, gives good value for money, and is built around the needs of residents and communities."

The county council wants to hear residents' views on two options; a single unitary council for the whole of Warwickshire, or two

councils – one in the south covering Stratford and Warwick, and another in the north for Rugby, North Warwickshire, Nuneaton and Bedworth.

The feedback will help inform WCC's final proposal that will be sent to the Government in November.

The survey is open until August 25.

Visit ask.warwickshire.gov.uk/bi/lgr/ to complete the survey.

Both Stratford District Council and Warwick District Council have agreed to the two unitary authority model as the basis for public consultation.

Rugby Borough Council has not yet indicated a preference for either option.

Sergeant suspended over rape report

A WARWICKSHIRE Police sergeant arrested on suspicion of rape has been suspended.

An investigation began on July 20 after a report was made, and an arrest made two days later.

The officer was released on bail with conditions and was initially moved to a non-public facing role.

They have now been suspended while enquiries continue.

The suspension status of any officer under investigation remains under continuous review.

A Warwickshire Police spokesperson said: "As a force, we expect the highest standards from all our officers, staff and volun-

teers and where there are concerns or allegations these aren't being met, our Professional Standards Department will investigate thoroughly.

"We are committed to being open and transparent around such processes and will share more information when appropriate"

Patio Plants & Planters

at the garden lovers' garden centre



www.farnboroughgardencentre.co.uk

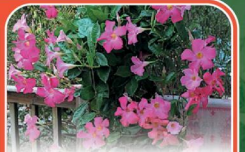
A traditional garden centre that focuses on providing quality plants, garden products & giftware



JAPANESE ACERS



ROSE TREES & BUSHES



CLIMBING PLANTS

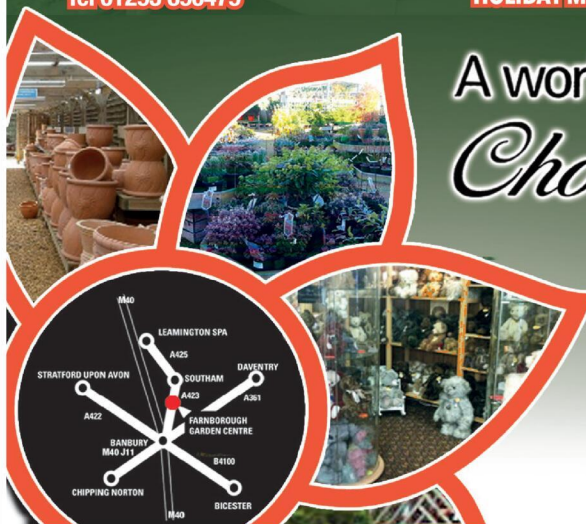


TEDDY LOVERS

Come & visit our Treasured Teddies shop & see our huge range of bears, Cuddly Collectables & furry friends including loveable limited editions and everyday huggables

On A423 Southam Road,
Nr Farnborough,
Banbury OX17 1EL
Tel 01295 690479

OPEN SIX DAYS A WEEK
Tues - Sat 9 - 5.30, Sun 10.30 - 4.30
OPEN BANK HOLIDAY MONDAYS



A world of
Choice

WHERE THINGS FOR YOUR GARDEN WON'T COST THE EARTH

Road works set to 'supercharge' area's economy

by **Andy Morris**
andy.morris@bullivantmedia.com

UNBLOCKING a notorious traffic bottleneck between Rugby and Lutterworth could 'supercharge' the local economy, new figures suggest.

Statistics released by Midlands Connect show that within three miles of the A5/A426 Gibbet Hill junction, strategic companies collectively support nearly 19,000 jobs and generate more than £2.9 billion in annual turnover.

The vital junction, which connects the M1 and M6 at the heart of England's 'Logistics Golden Triangle', suffers from daily congestion and severe delays which hamper the efficient movement of goods.

Midlands Connect's Roads Programme Lead, Swati Mittal, said investment in road upgrades could help 'supercharge' the area's economic growth.



The Gibbet Hill junction between Rugby and Lutterworth is a notorious bottleneck.

She said: "The Gibbet Hill junction is a vital access point at the heart of the Logistics Golden Triangle, serving major sites such as Magna Park, DIRFT, and Rugby Gateway.

"Any investment in road upgrades could supercharge the area's economic growth.

"It connects key employment sites and housing developments to the A5, M1, and M6, enabling both national freight movements and access to labour markets. New analysis of strategic companies within 5km of the junction highlights the scale

of economic activity dependent on this corridor."

In May, Midlands Connect showed that there could be 47,600 extra trips a week using the junction – which is at 98% capacity every morning – if improvements were made.

When 500 people were asked by Cenuswide for Midlands Connect whether they would see upgrades to the junction as important to the local economy, 75 per cent agreed it would boost the economy.

Rugby MP John Slinger said: "This project will improve traffic flow in a strategically important location.

"I've recently met with the Minister for the Future of Roads at the Department for Transport, Lillian Greenwood, neighbouring MP Alberto Costa, and National Highways, and I look forward to continuing to work together to ensure this project moves forward swiftly so that Rugby and the surrounding area can benefit fully from these improvements."



Ready to roll – Theatre sister Emma Bayliss, deputy theatre manager Danielle Loydall, clinical lead Allison Bolsover, Friends of St Cross chair Doug Jones, theatre manager Larissa Belgrove, and theatre nurse Thomas Kraftsik.

Hospital says thanks for Friends gift

PATIENTS at Rugby's Hospital of St Cross are on the move, thanks to a charity donation.

The Friends of St Cross have donated a new bed mover so patients can be moved between wards and theatres more easily.

Staff at St Cross move between 15 and 25 patients per day, travelling along an eight per cent gradient in the approach to theatres, and requiring several members of staff to move each patient.

But the new equipment's battery-powered wheels means patients can be moved up and down the ramp by a single staff member

Larissa Belgrove, senior theatre sister at St Cross, said: "This new equipment has made a world of a difference to the team, and patients also feel more secure as they are transported to and from the wards. We are most grateful to The Friends of St Cross for donating this excellent

piece of equipment."

Doug Jones, chair of The Friends of St Cross, said it was great to see the ease with which beds could be moved, and the difference this would make to staff and patients.

He added: "I am delighted to report that we are halfway to achieving our target of raising at least £70,000 as part of our Platinum Anniversary Celebrations. An update on the appeal will be given at our AGM on September 10."



Helping You Support Someone *Vulnerable*.

Expert legal advice when it matters most.

Talk to our trusted legal advisers *today*.

0121 733 8000
wilkes.co.uk

Your legal partner for all things in *life*.



AUGUST BONANZA CARPET



Order now in August to benefit from



at GODIVA CARPETS

Quality Carpets at
UNBEATABLE PRICES

You Can find your Perfect Carpet AND Save a Fortune too!
Huge Choice of Qualities and Variety of Colours to Compliment Any Interior
Plenty of Bargains to suit every pocket
LOW, LOW PRICES - GREAT, GREAT SERVICE

**100's OF
AMAZING CARPET AND
FLOORING DEALS ACROSS
OUR EXTENSIVE
RANGE**

Buying quality and affordable Carpets couldn't be easier - and Don't Worry, the Team at Godiva Carpets will make it even easier for you, to find your perfect carpet or flooring options

- **Top Quality Wilton Royal to Branded Room Sized Remnants to clear and ready to go (No reasonable offer refused)**
- **Landlord Deals from only £24**



**OUR NORMAL OPENING HOURS ARE
9AM TO 5.30PM MONDAY TO SATURDAY
(CLOSED ON SUNDAYS)**

02476 551200

**GODIVA CARPETS LTD, ARGYLE HOUSE, COLLINGWOOD ROAD,
EARLSDON, COVENTRY CV5 6HW**

VISIT OUR ONLINE STORE WWW.GODIVACARPETS.CO.UK



AND MANY MORE LEADING BRANDS

GODIVA CARPETS

A family business trading since 1953



MPs echo calls to stop violence horror in Gaza

AN IMPASSIONED call is being made for an immediate end to violence in Gaza.

by Philippa Mings

The leader of Warwick District Council (WDC) is writing to local MPs to draw their attention to the humanitarian crisis and demand action.

It follows concerns from residents and weekly vigils in towns across the district.

A motion was put forward by Coun Sam Jones calling for action to demand an immediate end to violence in Gaza and the West Bank and for unrestricted access to be given to the UN agencies to provide humanitarian aid.

Coun Ian Davison will now write to local MPs to draw their attention to the calls by residents, community groups and the University of Warwick's Student Solidarity Network and campus trade unions demanding they take all actions available to them to bring an immediate end to violence in Gaza and the West Bank, including East Jerusalem, enable

unrestricted humanitarian access by UN agencies and a full lifting of the blockade, and ensure the recognition of the state of Palestine by the UK Government.

Kenilworth and Southam MP Jeremy Wright said: "Throughout this conflict, most of us have agonised about what more may be done to end it. All of us surely want to see the destruction in Gaza stop and Israeli hostages returned.

"The United Kingdom cannot of course impose a solution, but the government has in my view been right to criticise Israel's approach to humanitarian aid and to sanction individuals.

"I have reached the conclusion that UK recognition of the state of Palestine should happen now, preferably in conjunction with other countries and preferably in combination with the recognition of Israel by other countries who have been reluctant to offer it, so that we can rein-

force the Two State Solution by reinforcing both states involved.

"I believe the recognition of the state of Palestine is now a step the UK can and should take to help preserve the Two State Solution, which is in serious jeopardy, and I would support the government if it chooses to take that step."

Warwick and Leamington MP Matt Western added: "The scenes in Gaza are beyond appalling with children who are so starving, they are just skin and bones, people being shot at as they attempt to access the aid they so badly need.

"The recognition of Palestine will not solve this overnight, but it will bring us closer to a two-state solution which is the only viable solution for peace in the region.

"The priority in the coming days and weeks must be the immediate focus on getting aid into Gaza and huge amounts of it.

"I will continue to make these calls."



And that makes 48 - The volunteers en route with the ambulance to Ukraine.

More ambulances head to Ukraine

ALMOST 50 vehicles have now been delivered to Ukraine from Warwickshire.

Two more ambulances and a Range Rover recently set off from Warwick Services in the latest humanitarian mission delivering urgent aid to the war-torn country. It takes the total number of vehicles handed over to 48.

They will be used to support civilians and medics in frontline zones.

The cross-border mission, led by the Belveder charity and supported by LKQ Euro Car Parts, brought together volun-

teers including former high court judge Anthony Cleary, David Blick of Warwickshire Gin Company, vice lord-lieutenant of Warwickshire Pal Sanghera, deputy lord-lieutenant of Warwickshire Simon Miesegaes, David Owen JP and Sean McGovern, senior coroner for Coventry and Warwickshire.

After travelling more than 1,000 miles across Europe, the team reached Lezajsk in Poland.

The final leg of the journey will be carried out by Caritas, which will deliver the vehicles across the

border into Ukraine. Mr Cleary said: "Another successful convoy to Ukraine, meeting our brother charity on the Poland/Ukraine border for the final handover of the vehicles. Two ambulances and a Range Rover which is more nimble and used to extract wounded personnel who are under attack.

"This expedition brings us to just under 50 vehicles delivered since our first endeavour.

"Each driver is conscious that this is the least we can do to keep the flame burning."

OFTEN IMITATED BUT NEVER EQUALLED

While all costs are going up - OURS ARE STAYING DOWN

Due to our customer friendly services of No Door Salesmen, No Showroom and little overheads



NEW FLUSH WINDOWS

BEAUTIFUL COMPOSITE DOORS
Fully fitted
Competitive Prices



UPTO 30% OFF ALL WINDOWS



ALL PRODUCTS HAVE A 10 YEAR INSURANCE BACKED WARRANTY

BILL MOORE'S WINDOWS AND DOORS

A NAME YOU CAN TRUST

1 Brookside Close, Stratford-upon-Avon, Warwickshire CV37 9PL

01789 415171 • 07729 689239 • www.billmooreswindowsanddoors.co.uk

THE BED FACTORY

SPECIALISTS IN BEDS AND MATTRESSES FOR PEOPLE WITH BACK, SHOULDER OR HIP PAIN.

SALE NOW ON

The Harrison Handmade Beds



Complete Range of Harrison FR **Chemical Free** Beds on Show

Special Price Ottoman



FREE HEADBOARD

Single £449 • Double £499
King £599 • Super King £699

Sutton Wooden Frame Hand Made Frame



Single £339 • Double £419
King £469 • Super King £589

1 WEEK DELIVERY ON ELECTRIC BEDS



FREE AT HOME SELECTION AVAILABLE

5 POINT MASSAGE MATTRESS NOW AVAILABLE TO TRY IN STORE.

We are specialists in electric adjustable beds and have A Large Selection Available Starting From £999

Avon Fire Side Chair



£669.00

Special Edition 2 Drawer Bed Set



FREE HEADBOARD

3'0 was £449 now £389
4'6 Was £599 now £499
5'0 was £699 now £599

Bedroom Furniture



Full Range of Bedroom Furniture Available

Celebrity studio in store



Mammoth Ultimate Health Mattress
5'0 Pure Mattress or 2000 Limited Stocks
Reduced from **£2139**
TO JUST **£1599**

Helps reduce back, shoulder and hip pain

FREE Local Delivery and FREE Disposal on orders over £499*

*Terms and conditions apply see in store

Leamington's Largest Independent Bed Retailer

We can supply a large range of beds in 1 to 2 weeks - 3' Single Beds also available - WE SUPPLY WHEN OTHERS FAIL

139 Regent Street, Royal Leamington Spa, CV32 4NX

01926 422404

sales@thebedfactory.co.uk
and www.thebedfactory.co.uk

Trustpilot ★★★★★

Special Feature



LEFT Budding artist. 3225010 MMR3

RIGHT: Fun on the slides. 3225010 MMR8

BELOW LEFT: Navigating the obstacle course. 3225010 MMR5

BELOW RIGHT: Bubbles galore. 3225010 MMR14

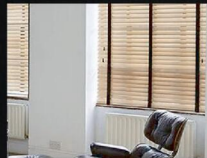
All pictures by Marcus Mingins



VERTICAL



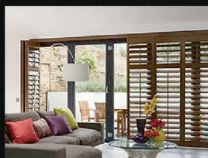
ROLLER



VENETIAN



ROMAN



SHUTTER



INTU

10 YEARS WARRANTY ON SHUTTER BLINDS



Available in beautiful and stylish Hard Wood and Faux Wood

WE WILL BEAT ANY LIKE-FOR-LIKE QUOTE

Visit us at: 21 Brixham Drive, Coventry, CV2 3LA

Email: info@brixham-blinds.co.uk

Contact us today for a **FREE** no-obligation quotation

T: 02476 666686 brixham-blinds.co.uk

BRIXHAM

BLINDS

Residential and Commercial

Brixham blinds are a well-established blinds company offering to trade and consumer. With a great range of quality bespoke and made to measure blinds by an established blind company you can trust.

Whether you're thinking of vertical blinds, roller blinds, venetian blinds or roman blinds, shutter blinds, all of our blinds come with child safety regulations and fittings to make sure your home is safe.

Special Feature



LEFT: Creating a racquet. 3225010MMR2

RIGHT: Having a quacking time. 3225010MMR4

BELOW LEFT: The only way is up. 3225010MMR10

All pictures by Marcus Mingins



The play's the thing...



PLAYHEM was unleashed at a Rugby park last week as part of a national initiative to get children outside and active.

Whitehall Recreation Ground hosted the National Play Day event - the theme of which was 'spaces for play', to recognise every child's right to accessible play.

Rugby Borough Council play rangers, local groups and providers invited kids to take on

inflatable slides and obstacles, a climbing wall, soft archery, arts and crafts, parkour workshops, early years activities, circus workshops, and a mash up of play and multisport provided by the council's Sport and Leisure team.

Families brought along picnics and sampled food from local stalls.

And The Observer went along to take a few summer snaps. More pictures opposite.



OUR BIG SALE IS STILL ON

OPEN 7 DAYS CV6 5EY

INFLATION EVERYWHERE - BUT NOT AT CARPET MILL!

Everything is going up in price, the same for Carpets and this is why it pays to go to Carpet Mill. Manufacturers of yarn and other materials for making carpets have all had price rises and some manufacturers are busy changing their specifications to many ranges to compensate. They also get surplus rolls that they cannot sell to the big stores as they don't have enough stock left to service them.

Therefore, we are buying those rolls at a FAT DISCOUNT and passing it on to YOU.





BRAND NAME CARPETS AT LOW LOW PRICES

CARPET MILL

CROMWELL STREET (OFF RED LANE) COVENTRY CV6 5EY TEL: (024) 7666 1985

SOME CUSTOMERS TRAVEL MILES - YOU DON'T HAVE TO - WE ARE HERE

From quality Axminster to budget cord

We are recommended for our low prices, quality service and extensive range throughout the Midlands. There are no R.R. prices on carpets, so if others give 50% offers or sales discounts, is it 50% off their normal high prices. ALWAYS compare with Carpet Mills normal prices!!!!!!!

www.salecarpet.uk



COUSINS FURNITURE



Robert (far left) on holiday with his Grandfather Bill Cole and other relatives.



Cole of Bilston delivery truck circa 1970

Cousins Furniture Celebrates 40 Years: The Future is Bright

This year marks 40 years of Cousins Furniture furnishing homes across the Midlands, Shropshire, and beyond. Join us in-store to celebrate our heritage, reflect on the past, and look forward to a bright future.

A Century of Roots

Cousins opened in 1985, but its story began in 1921 when Bill Cole founded 'Coles of Bilston,' a reclamation yard turned thriving business—complete with a private zoo! On August 17, 1985, cousins Robert and Edward Shotton and William Cole opened the first Cousins store in Tyseley, Birmingham, quickly becoming a destination for families.

A Family Business

Cousins grew with the opening of a Dudley store in 1996. Today, it is the Midlands' largest family-run furniture retailer, still led by Chairman Robert Shotton and his son John, who personally oversee quality and value.



Robert & Edward Shotton along with Faith Brown at the opening of Tyseley store in 1985.



Rose Shotton -Robert & Edward's mother- cuts the ribbon at the opening of the Dudley store in 1996.

Expansion & Innovation

In 2020, Cousins acquired former Alan Ward stores in Shrewsbury and Newcastle-under-Lyme, fulfilling 1,000+ outstanding orders and expanding reach. Distribution centres in Oldbury and Shrewsbury now serve the Midlands and Wales with fast delivery.

Trusted for 40 Years

Partnering with leading British brands like Parker Knoll, G Plan, Ercol, ViSpring, and Hypnos, over 60% of Cousins' customers are repeat buyers or referrals—proof of lasting quality and service.

Always Moving Forward

Cousins adapts to evolving lifestyles with bespoke made-to-order ranges, a growing online store, and in-store features like the Deja Brew café (Shrewsbury), accessories, and flooring—everything to furnish a home under one roof.



After the refurbishment of Tyseley store in 1997.



Cousins 38th Anniversary - Shotton family.

A Bright Future

Recent refurbishments include a new Dudley entrance and ongoing upgrades in Shrewsbury and Tyseley. "People need to be inspired when shopping," says Chairman Robert Shotton.

Commitment to Sustainability

Cousins recycles 1,000+ beds, uses low-emission vans, has installed solar panels, provides EV chargers, and offers FSC-certified reclaimed furniture—furnishing homes responsibly for the future.

Visit Cousins in Birmingham, Dudley, Newcastle-under-Lyme, or Shrewsbury to celebrate 40 years and create a home you'll love.



New modern entrance at Dudley store completed 2024.

Celebrating

1985

40 YEARS

2025

OF QUALITY & VALUE

Interest Free Credit Available

save 40% OFF Anniversary Collections



Tyseley Opening with Faith Brown 1985



Dudley Opening with Rose Shotton along with Jack & Vera Duckworth - 1996

Free Glass of Bubbly WHEN YOU VISIT US IN STORE.



ANNIVERSARY OFFERS THROUGHOUT THE STORES

COUSINS FURNITURE

cousinsfurniture.co.uk

Enter Our Competitions



0% APR REPRESENTATIVE: Interest Free Credit available on all orders over £500. REPRESENTATIVE EXAMPLE Cash price £1,200. Interest rate 0% fixed. £300 deposit, then 12 payments of £75 (0% APR Representative) Total amount financed £900. Subject to status. Written details on request. Offer not available on clearance items, or in store concessions.



From little acorns - An Oak tree has been planted by the RSC to commemorate the coronation of King Charles III.

MIGHTY oaks from little acorns grow - not quite Shakespeare but fitting nevertheless to the scene which unfolded at the Swan Gardens in Stratford.

An English Oak tree has been planted by the Royal Shakespeare Company to commemorate the coronation of King Charles III

The event symbolised a lasting tribute to the King - the RSC's patron - but was also aimed to highlight a shared commitment to sustainability, heritage, and community between the RSC, the county of Warwickshire, and the people of Stratford.

The ceremony took place in the Avon Bank gardens, with Warwickshire Lord Lieutenant Tim Cox joined by RSC deputy executive director Jacqui O'Hanlon, and

two year pupils from Stratford Primary School - Naia West and Sara Clewer - who each delivered speeches outlining their hopes and dreams for the future of Stratford.

Naia spoke of her vision for a greener town and Sara shared her aspiration for safer travel and sustainability.

The date of the ceremony held additional historical significance, marking 50 years since the late Queen Elizabeth II formally opened the Centenary Gardens - also known locally as The Dell.

As part of the celebration, the original commemorative plaque from 1975 was reinstated onto the wall overlooking the gardens, further connecting Stratford's past, present, and future.

Quarter of staff made redundant as Trust moves to lower costs

by **Philippa Mingins**
 philippa.mingins@bullivantmedia.com

THE SHAKESPEARE Birthplace Trust has made a quarter of its staff redundant in a bid to cut costs.

The charity, which looks after the Shakespeare family homes in and around Stratford, confirmed that 29 of its 122 staff had been let go due to pressures on the tourism industry.

The staff members are from junior, middle management and senior positions, and the move will save SBT £1.9million in annual salary costs.

An SBT spokesperson told the Observer: "We have not made these decisions lightly. We know that our staff and volunteers are our greatest advocates and most talented assets, and we are continuing to support everyone affected by this process."

"We needed to focus on and support the roles that are pivotal to securing our financial stability and delivering our core purpose."

"As a trust, we are now working extremely hard to deliver the three pillars of our

financial recovery plan.

"These pillars investing in our core activities, growing and diversifying our income and funding ourselves differently - will continue to inform our work because we still need to weather rising costs and the challenges of conserving our historic estate."

"However, we are now able to move forward from a stable and sustainable financial position and are looking to the future."

"As guardians of unique cultural heritage and collections that we hold in trust for the town, the nation and Shakespeare lovers across the globe, we remain committed both to their care and preservation but also to finding new and exciting ways to bring people together through exploring the life, work and legacy of William Shakespeare."

"Again, we would like to reassure our local, national and international visitors and supporters that our doors are very much open as usual. We are so grateful for their loyalty, appreciation and generosity, and we hope they will continue to support the many exciting activities and events we have planned this year."



M MALLORY COURT COUNTRY HOUSE HOTEL & SPA



Bank Holiday Afternoon Tea

Celebrate the Bank Holiday in true English style with a delectable afternoon tea served in our elegant spaces or picturesque gardens.

1.30pm - 4.00pm

Monday, 25th August | £39.50 per person

Acoustic Afternoons with Barton Hollow

Immerse yourself in the magic of live music as these talented musicians bring warmth and harmony to the afternoon...

2:45pm - 5:00pm

July - September (Selected Sundays)

A Taste of the Season

AN EXCLUSIVE DINING EXPERIENCE

An elegant evening of Champagne, canapés, and a four-course tasting menu by Executive Head Chef Stu Deeley, paired with fine wines, celebrating the best of late summer's produce.

Starting at 6.00pm

Thursday, 11th September | £159.00 per person



RCN BEDS FURNITURE

£599

SAVE

RECLINERS

£899

OTTOMAN BEDS

£299

WHILE STOCKS LAST!

SAVE

SAVE

OAK/PINE BEDROOMS

SAVE

SAVE

CARPETS

SAVE

ITALIAN SOFAS

SLIDING ROBES

SAVE

SAVE

MATTRESSES

BEDROOM FURNITURE

SAVE

SAVE

WE ARE OPEN 6 DAYS 9AM-5PM

rcn
Beds & Furniture

HENLEY ROAD, COVENTRY
TEL: 02476 603254

Making sure they stay safe in the school holidays starts in the home



Police are reminding parents and guardians to ensure they know how to manage their children's online safety. s

COUNTER Terrorism Policing West Midlands, which covers the West Mercia Police area, is urging parents to help keep their children safe online over the summer break.

With the school holidays underway, young people will be spending more time online and they want to remind parents and guardians to ensure they know how to manage their children's online safety, and remind them of the things they can do to support their children to be safer online.

This follows messages delivered by Counter Terrorism Policing and the National Crime Agency last week, which are increasingly seeing children being routinely exposed to the most serious harmful online content.

This includes sexual violence; self-harm and suicide content; extreme gore; animal cruelty; indecent images of children; and terrorist content.

This bombardment of online

harms can quickly become normalised. Worryingly, some of the children who come to the attention of Counter Terrorism Policing and the National Crime Agency are completely desensitised to extreme and obscene content.

Parents and guardians are urged to talk to their children about who they talk to online and the platforms they use to better understand the type of content they are consuming.

They can then support them with identifying harmful content and knowing what to do if they come across something that concerns them.

Physical measures such as using parental controls on apps, routers and individual devices can also help, but it's essential that these take place alongside regular conversations to help children and young people make the right decisions when online.

Detective Chief Superintendent Alison Hurst, Head of Counter Terrorism Policing West Midlands,

said: "Unfortunately we know that nationally more and more young people are being exposed to harmful content online and led down dangerous paths because they are being targeted by criminal gangs or extremists.

"By speaking directly to parents, guardians and caregivers, we hope to increase awareness of the dangers young people may be facing online, and empower them to feel confident in supporting their children and protecting their safety in

online spaces.

Counter Terrorism Policing and MI5 are seeing high levels of young people in terrorism-related investigations and 2023 saw the highest numbers of terrorism arrests of young people since records began.

They said a significant proportion of parents are unaware of their children's online safety - who they talked to, the content they viewed and the platforms they use.

Internet Matters provides practical

advice to parents on how to help their children navigate the ever-changing digital landscape.

Parents and carers can access information and advice specific to their child's age, the apps they use, or the issue they wish to address.

Anyone with concerns can report to us by calling 101 or 999 in an emergency.

If people concerned that someone might be taking a dangerous path, get advice and support via ACT Early.



Direct Floors
Home service

Carpets | Vinyls | Laminates | Wood

Shop at home for your new carpet and flooring and receive up to 30% off shop prices. We are COVID SAFE with 1,000's to choose from with our mobile showroom!

- ◆ Mobile showroom to your home
- ◆ 1000's Samples to your door
- ◆ Fully qualified insured fitters
- ◆ Family run business since 1999
- ◆ Furniture moved & carpets uplifted for OAP'S & disabled free of charge





Find us on facebook




Happy to help!

Call 7 days a week 8am-9pm
01527-894777
www.direct-floors.co.uk



Rugby Antiques & Jewellery Valuation Day

Tuesday 19th August 12pm to 2pm

Valuations of Silver, Jewellery, Watches, Gold, Ceramics, Antiques and General Collectables.

Items may be left to be consigned into Auction

**The Black Horse
43 The Green, Bilton,
Rugby, CV22 7LZ**

Donations in aid of WCS Care



Free Home Visits | Estate Clearances & Downsizing

If you have a lot of items you want valuing, we offer a **FREE** home visit service where we can come to your home. Contact us for more info

T: Hansons Warwickshire 07470 459309

E: clivejones@hansonsauctioneers.co.uk

www.hansonsauctioneers.co.uk



Hansons Auctioneers, Etwall, Derbyshire, DE65 6LS

Check on jobs in the advice

HOLIDAYMAKERS across Warwickshire are urged to check their vaccination status before jetting off this summer.

With suitcases packed and travel plans underway, sometimes it can be easy to overlook vaccinations which are important for protection against preventable illnesses.

Residents are encouraged to ask their GP first about their vaccination history. This is to check routine immunisations are up to date, and if any travel vaccinations are needed for long-haul destinations.

Warwickshire County Council's health spokesperson Coun Anne-Marie Sonko said: "It is important for residents to check with their GP about what vaccinations they may need before going on holiday, whether that is travelling abroad or staying within the UK. For those needing multiple vaccinations before visiting another country, please allow plenty of time to have each vaccination, as some may take a few weeks to become effective."

"For holidays within the UK, routine NHS vaccinations are just as important to stay healthy and independent, and I encourage everyone to check their vaccinations are up to date."

The common vaccinations to consider before going on holiday are Hepatitis A and B vaccine - recommended for many destinations especially in East and Southeast Asia, Japanese Encephalitis vaccine - to consider for travel to East and Southeast Asia, Meningococcal Meningitis vaccine - important for travellers to Saudi Arabia for Umrah and Hajj pilgrims, and Typhoid vaccine - recommended for travellers to Sri Lanka and other regions with outbreaks.

Visit www.nhs.uk/vaccinations/travel-vaccinations/available-travel-vaccines/ for more information.

Don't get in a flap when summer wasps are about

KEEP calm and carry on. That's the message for visitors to Warwickshire's country parks and green spaces who may have noticed more wasps around recently.

While the uninvited picnic guests can certainly be a nuisance, park rangers are encouraging people to stay calm and follow a few simple steps to avoid getting stung:

- * Avoid flapping your arms or swatting at wasps, as this can agitate them.
- * Wear light-coloured clothing - wasps are less likely to be attracted to this than darker colours.
- * Keep food and drink covered whenever you're not eating or drinking - for example, put lids back on containers and cover open glasses or cans with an object or item of clothing. Dispose of food wrappers promptly in the bins provided.

The increase in wasps this summer follows the UK's warmest spring on record as reported by the Met Office, with wasp numbers generally trending upwards in warmer weather.

While their presence can be irritating, there's no cause for wider concern - wasps play an important role in a healthy ecosystem as both pollinators and predators

Wasps are out and about in force in Warwickshire this summer.



of pests.

At Warwickshire's country parks, rangers are taking extra steps to help manage the wasp population. This includes increasing how often bins are emptied where possible, cleaning the inside of bins, removing wasp

nests if appropriate, and attracting wasps away from areas where lots of people gather.

Warwickshire County Council environment spokesman Darren Cheshire said: "Wasps are having a particularly good year, so our countryside rangers wanted

to take the opportunity to share some useful tips to help people avoid getting stung. Thanks to the team for doing what they can to reduce wasp numbers in our parks - I hope everyone continues to enjoy our wonderful green spaces this summer!"



By Coach from Coventry, Rugby

Reader Travel



ISLE OF WIGHT WEEKEND

Departing Fri 26 Sep '25

Let us whisk you away to the Isle of Wight for a weekend to rejuvenate. Tailored for those who seek relaxation by the sea, along with a desire to explore, this break includes a visit to the historic town of Newport and an optional 'Round the Island' tour.

SO MUCH INCLUDED...

- ✓ Return coach travel & ferry crossings from Rugby, Coventry
- ✓ 3 nights at the Shanklin Beach Hotel, Shanklin (JG2+ rating) with dinner & breakfast
- ✓ 2 for 1 bar (6pm-9pm) on selected drinks (Shanklin Beach Hotel only)
- ✓ Entertainment on some evenings (every evening at the Shanklin Beach Hotel)
- ✓ Excursion to Newport

Optional Round the Island tour (£15pp)

▶ **SAVE £20 - Quote OSG**
- Book by 29 Aug 2025

4 Days by Coach only £289

Single Supplement £50



TORQUAY ENTERTAINMENT WEEKEND

Departing Fri 21 Nov '25

Join the party at the Riviera Hotel for a fun and refreshing weekend away! With three nights of entertainment at our hotel, a trip to Dawlish and Teignmouth and an optional excursion to Exeter, be prepared for a relaxing mix of indoor and outdoor adventure.

SO MUCH INCLUDED...

- ✓ Return coach travel from Rugby
- ✓ Overnight stay at the Riviera Hotel (JG3 rating) with breakfast
- ✓ Excursions to Dawlish & Teignmouth

Optional excursion to Exeter (£14pp)

4 Days by Coach only £219

Single Supplement £40



BLACKPOOL & CRUISING LAKE WINDERMERE

Departing Mon 22 Sep '25

Vibrant and timeless, Blackpool has remained one of the UK's favourite seaside destinations thanks to its iconic tower and beaches. From here we explore the Lake District and visit a traditional market - this is the perfect combination of coast and country!

SO MUCH INCLUDED...

- ✓ Return coach travel from Rugby, Coventry
- ✓ 4 nights at the Bluewaters Hotel, Blackpool (JG2 rating) with dinner & breakfast

- ✓ Entertainment some evenings
- ✓ Cruise on Lake Windermere
- ✓ Scenic drive through the Ribbles Valley
- ✓ Cruise on the Leeds & Liverpool Canal
- ✓ Excursions to Kendal, Bowness-on-Windermere & Skipton

Optional excursion to Southport (£10pp)

▶ **SAVE £30 - Quote OSG**

- Book by 29 Aug 2025

5 Days by Coach only £329

Single Supplement £100

For more information, or to book, please call

03332 342 514 Quote **osg** justgoholidays.com/OSG

033 numbers are free within inclusive minutes packages otherwise standard rates apply.

or visit us online at



These packages are subject to JustGo! Holidays' terms & conditions. Coach bookings are protected by Bonded Coach Holidays & the Association of Bonded Travel Organisers Trust Ltd. Air holidays are ATOL protected (No. 10689). Prices are per person based on two people sharing a room & holidays on bookings made up to 10 days (last publication, after which prices may fluctuate). Calls to 033 numbers are free within inclusive minutes packages, else standard rates apply. Choices of date, hotel, a port or pick up location may incur a supplement. Please see website or call for full details.



Ready for a month in the saddle

WARWICKSHIRE is gearing up for Cycle September.

Residents are being called to saddle up for the initiative led by Warwickshire County Council and cycling platform Love to Ride aimed at promoting the benefits of cycling.

Participants can get involved by signing up to the Love to Ride app where they can log their bike trips and potentially win prizes.

Riders of every level are invited to participate and can ride anywhere, anytime in September - even a ten-minute ride around the park.

Workplaces can also unleash their competitive side through the workplace competition. Co-workers can join their workplace profile on Love to Ride and compete to earn the most points and top the client area leaderboard in their size category.

Visit www.lovetoride.net/warwickshire for more details.

Punishing route will see cyclists cross the county

THE NEWLY revealed route for the 2025 Lloyds Tour of Britain Men confirms Warwickshire will host the race's longest stage from Atherstone to Burton Dassett Hills Country Park.

Residents can now view a detailed map of the 116.2 mile stage four of the race, taking place on September 5, and find out what time the world's top professional cyclists will be passing through their area.

From the start in Atherstone at 10.30am, the route will take in Ansley, Shustoke, and Fillongley, before heading through Bedworth and Bulkington, then heading south via Brinklow to skirt Rugby and go through Dunchurch.

The day's intermediate sprint will come after 85 kilometres of racing on Rugby Road in Cubbington, before the climbing starts in earnest in the second part of the stage, with the first categorised climb at Friz Hill, between Wellesbourne and Compton Verney.

From Kineton the route heads south to Shipston, with the next climb of Fant Hill at Upper Brailes, soon after, followed almost immediately by 900 metres up Sun Rising Hill as it takes the race up onto the Edgehill escarpment.

The stage then uses the same finishing circuit around Burton Dassett Hills Country Park that featured in the 2019 race, when Mathieu van der Poel took a memorable stage



The challenge of Burton Dassett Hills Country Park awaits the cyclists at the finish of the Warwickshire stage on September 5.

win. Three ascents of the main, categorised, 1.4-kilometre climb, contribute towards more than 2,100 metres of ascent in the stage, the second highest of this year's race.

Along the way the route will take in all five districts and boroughs of Warwickshire and feature six categorised king of the mountains climbs - the most on any stage of the 2025 route.

Jonathan Day, managing director for British Cycling Events, said: "Fans

can now start planning exactly where they will be watching their heroes and cheering them on in September.

"We have worked hard with our stakeholders across all six stages to create this great route that will build to a real climax as we reach Wales, with the racing for the green jersey sure to go all the way down to the finish line on North Road in Cardiff."

Relaunched in 2004 after a five-year absence, the Lloyds Tour of Britain Men is British Cycling's pre-

mier road cycling event. The free-to-watch race features Olympic, world and Tour de France champions, and attracts a roadside audience of over 1 million spectators. Live coverage of the six stage race is shown daily in the UK and around the world.

The race starts in Suffolk on Tuesday September 2 and will finish in Cardiff on the following Sunday.

Visit www.warwickshire.gov.uk/cycletour to view a map of the route, along with the timings for the race.

Questions about care? We can help

We know moving into residential care is an emotional and difficult decision with lots to think about.

With over 30 years' experience, we can help you navigate the process of finding the right care home, so that you feel confident about the decision you make - whether that's choosing a WCS Care home, or one outside our group that's more suited to your needs.

If you've got questions about care, or one of our care homes, our Trusted Advisors can help.



Philip Rainsford



Drovers House, Rugby

07802 728447

p.rainsford@wcs-care.co.uk

Westlands, Rugby Dewar Close, Rugby

07802 728443

j.rugg@wcs-care.co.uk

Josephine Rugg



Russell Lane

The Jewellers of Warwick

ARE HOLDING A
FREE VALUATION EVENT
BETWEEN THE DATES OF
18TH AND 30TH OF AUGUST

Russell Lane Jewellers have been established for over 50 years with expert knowledge of antiques, jewellery and silver items.

With the rising price of gold and precious stones, the value of jewellery has increased dramatically. A significant percentage of jewellery is potentially undervalued, which could threaten your ability to replace cherished items should anything happen to them. If you have family items that you wish to enquire about regarding age or value, this is the opportunity you have been waiting for!



Russell Lane's are running a **FREE** Verbal Appraisal event

Monday 18th until Saturday 30th
August 10am- 4.00pm

No appointment necessary, come along for your **FREE** appraisal where you can satisfy your peace of mind.



Additionally, for ONE day only **A VALUATION/ GOLD BUYING EVENT** **At the Greswolde Hotel, Knowle**

If you are unable to visit us at our shop for the free valuation of your treasured pieces, we are also holding a **FREE** valuation event at the Greswolde Hotel in Knowle on the

**Saturday 23rd August
9:30am-4:00pm**

We also purchase gold, silver and items of jewellery. Pop into the Greswolde for an immediate offer.



Website: www.russell-lane.co.uk

Tel: 01926 494 494 | Email: sales@russell-lane.co.uk

2 High Street, Warwick CV34 4AP

THE OLDEST JEWELLERS IN WARWICK

Keep an eye out for these tell-tale signs that the heat is truly on



Excessive panting and open-mouthed expressions - which can often look like your dog is smiling - could be signs your dog is experiencing heatstroke.

'SMILING' dogs are not always happy ones in heatwaves - that is the warning from a Warwickshire dog rescue charity.

As temperatures once again soar across the UK, Dogs Trust Kenilworth is urging dog owners to take extra care in hot weather - and to understand that what looks like a grin could be a sign your dog is experiencing heatstroke.

The charity is reminding owners that excessive panting and open-mouthed expressions - which can often look like your dog is smiling - can be signs that a dog is overheating and struggling to cool down.

A 'grin' may also be a sign that your dog is stressed or trying to diffuse social conflict.

Victoria Henry, Senior Veterinary Surgeon at Dogs Trust, said: "It's easy to mistake a panting dog for a smiling one, but panting is one of the first signs of heatstroke, which can be fatal if not treated quickly.

"Dogs can't regulate their body heat in the same way as humans, so extra care needs to be taken. As owners, we need to know the signs that our dogs are getting too hot and help them take a rest and cool down when they need to.

"Some dogs aren't good at self-regulating and may continue to run and play even though they're hot and tired, which increases their risk of heatstroke.

"If you do spot the signs of heatstroke in your dog, take steps to cool them down and contact your vet immediately."

Symptoms of heatstroke in dogs include panting heavily, drooling excessively, appearing lethargic, drowsy or uncoordinated, vomiting or diarrhoea, and collapsing.

Certain breeds and types of dogs are at increased risk, including flat-faced breeds such as English Bulldogs, Pugs and French Bulldogs, as well as older dogs, overweight dogs and those with pre-existing

medical conditions.

Dogs Trust has shared the following advice to owners if they suspect their dog is experiencing heatstroke:

Act immediately to prevent your dog's condition getting worse
Cool first, transport second
Stop them from playing, walking or whatever activity they're doing and move the dog to a shaded and cool area
Start cooling them down urgently.

For young, conscious, healthy dogs, this means immersing them in cold water, for example in a paddling pool if possible, keeping their head above water. Use any water available, provided it is cooler than your dog.

If immersion is not possible, continuous dousing with cold water is an alternative

For older dogs or dogs with health conditions, spray them with room temperature water, avoiding their face, and combine with air movement from a breeze, fan or air conditioning. Place ice, wrapped in a tea towel to prevent ice burns, in their groin and armpits

Always closely monitor cooling and stop if you notice signs of shivering

Don't place a wet towel over them as this can raise their temperature
Call your vet urgently for further

advice and transport them there as quickly as is safely possible. Keep the air conditioning on in the car or the windows open
If your dog has collapsed or is struggling to breathe, call your nearest vet immediately.

Dogs Trust also advises that dogs should never be left alone in cars as even just a few minutes in a hot car can prove fatal. Anyone who sees a dog in a car in distress is advised to call 999 immediately.

Visit www.dogstrust.org.uk/dog-advice/life-with-your-dog/seasonal/warm-weather for more advice about how to keep your dog safe this summer.

The New Ocean Hotel

WESTON-SUPER-MARE

Amazing Offers
Up To 25% Off

FANTASTIC FIVE DAY BREAKS

****Four Nights Accommodation **Full English Breakfast
**Four Course Evening Meal **Live Nightly Entertainment
Optional Coach Pick Up

| | |
|-------------------------------------|----------------------------|
| Monday 25th Aug - Friday 29th Aug | Was £345 NOW £295pp |
| Monday 1st Sept - Friday 5th Sept | Was £339 NOW £289pp |
| Monday 8th Sept - Friday 12th Sept | Was £335 NOW £285pp |
| Monday 22nd Sept - Friday 26th Sept | Was £335 NOW £285pp |
| Monday 29th Sept - Friday 3rd Oct | Was £329 NOW £279pp |
| Monday 6th Oct - Friday 10th Oct | Was £325 NOW £265pp |
| Monday 20th Oct - Friday 24th Oct | Was £325 NOW £265pp |

FREE BAR WEEKENDS

****Three Nights Accommodation **Full English Breakfast
**Four Course Evening Meal **Live Nightly Entertainment
Optional Coach Pick Up **FREE BAR 6pm-10pm

| | |
|-------------------------------------|----------------------------|
| Friday 22nd Aug - Monday 25th Aug | Was £329 NOW £279pp |
| Friday 29th Aug - Monday 1st Sept | Was £329 NOW £269pp |
| Friday 5th Sept - Monday 8th Sept | Was £329 NOW £269pp |
| Friday 12th Sept - Monday 15th Sept | Was £325 NOW £265pp |
| Friday 19th Sept - Monday 22nd Sept | Was £325 NOW £265pp |
| Friday 3rd Oct - Monday 6th Oct | Was £319 NOW £255pp |
| Friday 17th Oct - Monday 20th Oct | Was £309 NOW £249pp |



To book or for further information please call us on **01934 621 839** • www.newoceanhotel.co.uk

#ALSLetsMe

www.arnoldlodge.com



ARNOLD LODGE

4-18 yrs Co-educational Independent Day School



ALS Lets ME ACHIEVE

What will your child be?



**JOIN US AT OUR OPEN DAY
ON SATURDAY 27TH SEPTEMBER
10:00AM - 1:00PM**



**YEAR 7
ASSESSMENT DAY
TUESDAY 7TH OCTOBER**

01926 778050

admissions@arnoldlodge.com

15-17 Kenilworth Rd, Leamington Spa, Warwickshire CV32 5TW

SUDOKU

Complete the grid so that every row, every column and every 3 x 3 box contains every digit from 1 to 9.

EASY

| | | | | | | | | |
|---|---|---|---|---|---|---|---|---|
| | | | | 5 | | | 8 | 6 |
| | 8 | 1 | | 3 | 9 | 2 | | |
| 7 | | 9 | | | | 1 | | 3 |
| | | 4 | 1 | 8 | 2 | | | |
| 8 | 1 | | | 7 | | | 2 | |
| | | 5 | | 6 | 4 | 7 | | |
| | | | | | | 8 | | 1 |
| | 6 | 3 | 5 | | | 4 | 9 | |
| 1 | 9 | | | 4 | | | 3 | 2 |

HARD

| | | | | | | | | |
|---|---|---|---|---|---|---|---|---|
| 7 | 8 | | | | | | 9 | |
| | | 3 | 6 | | | | 2 | |
| 1 | 2 | | | 8 | | | 4 | |
| | | | | | 5 | | | |
| 9 | | | 3 | | 6 | | | 2 |
| | | | 9 | | | | | |
| | | 5 | | 9 | | | 7 | 3 |
| | | 1 | | | 4 | 8 | | |
| | | 2 | | | | | 4 | 9 |

PATHFINDER

Beginning with the top highlighted letter, follow a continuous path of words associated with the given subject. The trail goes through each letter once, twisting up, down and sideways, but never diagonally.

Best Actress Oscar winners

F M M A E W I L E L A H E N R
 R E D S T A N S T L R D L E E
 A N N T O K K A M I T N E R E
 E C A M N E C R N C O M I R S
 S M C R R B O I O S R E I W E
 O O D O I E L L U P O H T A N
 R M N A I L A A B N O Y S W K
 E E N U L S R R D H A R A H C
 C E B J N O S A N I L L R K A
 A T L A M A N E I H T I R Y T
 F I N N T R O P L E E Z R Y H
 E R N C H N A T A R O B E B A
 A L E J E P E E I N N E A H T
 W N C T T Y L R C E K L L N E
 R E E M E R S T O L I D M A S

Solutions opposite

CROSSWORD

| | | | | | | | | | | | | | | |
|----|----|----|--|----|--|----|----|----|----|---|----|--|--|---|
| | 1 | 2 | | 3 | | 4 | | 5 | | 6 | | | | 8 |
| 7 | | | | | | | | | | | | | | |
| 9 | | | | | | | | 10 | | | | | | |
| | | | | | | | | | | | | | | |
| 11 | | | | | | 12 | | | | | | | | |
| | | | | | | | | | | | | | | |
| 13 | | 14 | | | | | | 15 | 16 | | | | | |
| | | | | | | 17 | | | | | | | | |
| 18 | | | | 19 | | | | | 20 | | 21 | | | |
| | | | | | | | | | | | | | | |
| 22 | | | | | | | 23 | | | | | | | |
| | | | | | | | | | | | | | | |
| | 24 | | | | | | | | | | | | | |

ACROSS

- Promotion (11)
- Network of crossed laths (7)
- Pale yellow (5)
- Inflate (5)
- Praise bestowed (7)
- Make certain (6)
- Soul (6)
- Deny (7)
- Best known fabulist (5)
- Meaning (5)
- Expression of approval (7)
- Disposition (11)

DOWN

- As before (5)
- Airman (7)
- Horrific (6)
- Mediterranean island (5)
- Wandering (7)
- Dumbfound (11)
- Not tried (11)
- Formulated knowledge (7)
- Athletic ground (7)
- Pearl-producer (6)
- Soak (5)
- Disdain (5)

Scribble pad

LADDER

Using the clues provided, fill in each step of the ladder with a new word, changing one letter at a time.

- Bird part
- Alcoholic drink
- Metal cord
- Had on the body
- Language component



NINER

Each number from 1 to 9 represents a different letter. Solve the clues and insert the letters in the appropriate squares to discover a word which uses all nine letters.

- 42315** gives an element;
- 619658** gives a second element;
- 6157** gives charged particles.

| | | | | | | | | |
|---|---|---|---|---|---|---|---|---|
| 1 | 2 | 3 | 4 | 5 | 6 | 7 | 8 | 9 |
|---|---|---|---|---|---|---|---|---|

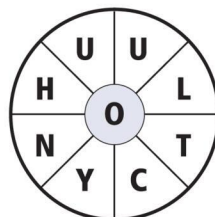
CODEWORD

This puzzle has no clues. Instead, every number printed in the grid represents a letter, with the same number always representing the same letter. For example, if 8 turns out to be a V, you can write in V wherever a square contains 8. Using your knowledge of words, complete the puzzle.

| | | | | | | | | | | | | | | |
|---|----|----|----|----|----|----|----|----|----|----|----|----|----|----|
| | | 20 | | 13 | | | 20 | | 11 | | | | | |
| A | | | | | | | | | | | | | | |
| B | 16 | 19 | 15 | 21 | | 19 | 23 | 13 | 22 | 13 | 5 | | | 20 |
| C | | | | | | | | | | | | | | |
| D | | 13 | | | 18 | 13 | 16 | | | 13 | | 13 | 23 | 15 |
| E | | | | | | | | | | | | | | |
| F | | 23 | | | 13 | | 14 | 25 | 20 | 19 | | 6 | | 25 |
| G | | | | | | | | | | | | | | |
| H | 1 | 16 | 22 | 6 | 16 | | 7 | | | | | | | 8 |
| I | | | | | | | | | | | | | | |
| J | | 24 | | | | 23 | 15 | 19 | 10 | 14 | 20 | 25 | 9 | 15 |
| K | | | | | | | | | | | | | | |
| L | | 25 | | | | 7 | | 15 | | 16 | | | | 16 |
| M | | | | | | | | | | | | | | |
| N | 15 | 3 | 13 | 20 | 17 | 20 | 22 | 15 | 7 | | | | | 3 |
| O | | | | | | | | | | | | | | |
| P | 12 | | | | | | | 10 | | 19 | 16 | 2 | 16 | 5 |
| Q | | | | | | | | | | | | | | |
| R | 10 | | | | | | 4 | | 26 | 10 | 20 | 22 | | 5 |
| S | | | | | | | | | | | | | | 22 |
| T | 16 | 2 | 13 | | | | 25 | | | 16 | 23 | 11 | | 25 |
| U | | | | | | | | | | | | | | |
| V | 14 | | | 3 | 16 | 9 | 13 | 23 | 22 | | 14 | 13 | 13 | 5 |
| W | | | | | | | | | | | | | | |
| X | | | | | | | | | | | | | | |
| Y | | | | | | | | | | | | | | |
| Z | | | | | | | | | | | | | | |

WORDWHEEL

You have 10 mins to find as many words as possible using the letters in the wheel. Each must use the hub letter and at least 3 others. Letters may be used only once. You cannot use plurals, foreign words or proper nouns. There is at least one 9-letter word to be found.

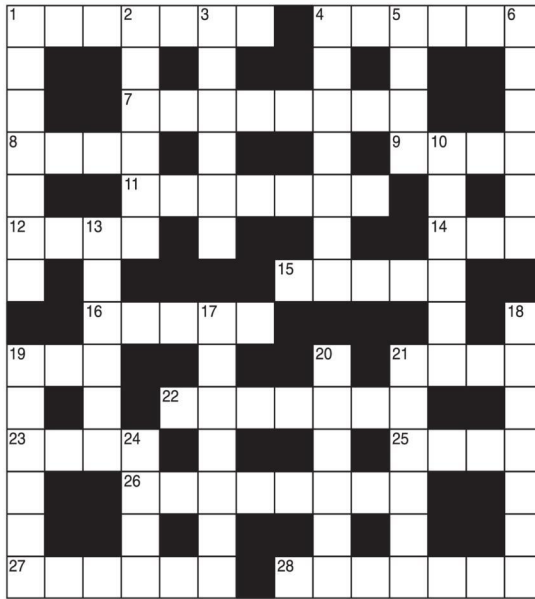


How you rate
 8 words: average
 12 words: good
 16 words: very good
 20 or more: excellent.

GENERAL KNOWLEDGE CROSSWORD

ACROSS

- 1 Small balls of glass, clay, etc., also known as taws (7)
- 4 Seaport of France whose "Burghers" were immortalised by Rodin (6)
- 7, 14 & 27 Across Book by George and Weedon Grossmith recounting the life of Charles Pooter (3,5,2,1,6)
- 8 See 10 Down
- 9 Trees whose numbers have decreased due to a fungus disease (4)
- 11 Clothes, bedding, etc., for a newborn baby (7)
- 12 Man of great wisdom (4)
- 14 See 7 Across
- 15 See 20 Down
- 16 Capital of the Seine-Maritime department, where Joan of Arc was burned (5)
- 19 & 26 Across Pen name of the poet and novelist famous for Mrs Miniver (3,8)
- 21 Bivalve shellfish found on sandy or muddy shores (4)
- 22 The --, level stretch in County Kildare, famous for its racecourse (7)
- 23 The North Atlantic Treaty Organisation (4)
- 25 Angle between branch and trunk of a tree (4)
- 26 See 19 Across
- 27 See 7 Across
- 28 Bones enclosing the brain (7)



DOWN

- 1 Port of Kenya, situated on an island of the same name (7)
- 2 East Sussex town, near the site of a battle in 1066 (6)
- 3 & 5 Down Musical-comedy star who played in such musicals as Bitter Sweet (6,4)
- 4 "Dirty British --, with a salt-caked smoke stack..." (Cargoes, John Masefield) (7)
- 5 See 3 Down
- 6 In Spain, a short sleep during the afternoon (6)
- 10 & 8 Across Composer and lyric-writer of Oliver! (6,4)
- 13 Type of dark red gem (6)
- 17 Officer in attendance upon a royal personage (7)
- 18 A mixture of mercury with other metal (7)
- 19 Surname of the dramatist whose works include Volpone, and The Alchemist (6)
- 20 & 15 Across Catholic priest and detective in stories by GK Chesterton (6,5)
- 21 The ferryman of the Styx, in classic mythology (6)
- 24 Capital of Norway, formerly called Christiania (4)

SOLUTIONS

ACROSS: 1 Marbles; 4 Calais; 7 The Diary; 8 Bart; 9 Elms; 11 Layette; 12 Sage; 14 Of A; 15 Brown; 16 Rouen; 19 Jan; 21 Clam; 22 Curragh; 23 NATO; 25 Axl; 26 Struther; 27 Nobody; 28 Cranium. DOWN: 1 Mombasa; 2 Barte; 3 Evelyn; 4 Coaster; 5 Lay; 6 Sista; 10 Lone; 13 Garnet; 17 Equerry; 18 Amalgam; 19 Jonson; 20 Father; 21 Charon; 24 Oslo.

General Knowledge Crossword
 ACROSS: 1 Advancement; 9 Lattice; 10 Lemon; 11 Boat; 12 Plaudit; 13 Ensure; 14 Science; 16 Stadium; 17 Oyster; 19 Steep; 21 Spum.
 DOWN: 2 Ditty; 3 Aviator; 4 Creep; 5 Malta; 6 Nomadic; 7 Flabbergast; 8 Unattempted; 15 Psyche; 18 Gainsay; 20 Aesop; 22 Tribute; 24 Temperament.

Crossword
 ORGANISED: Halle Berry, Kathy Bates; Reese Witherspoon, Hillary Swank, Charlize Theron, Nicole Kidman.
 Niner: Sandra Bullock, Kate Winslet, Marlon Cotillard, Helen Mirren.
 UNCOUTHLY: Frances McDormand, Emma Stone, Brie Larson, Julianne Moore.
 Wordwheel Pathfinder

1=F, 2=G, 3=C, 4=H, 5=N, 6=W, 7=M, 8=Z, 9=Y, 10=U, 11=K, 12=Q, 13=O, 14=L, 15=E, 16=A, 17=Y, 18=B, 19=P, 20=S, 21=X, 22=T, 23=R, 24=D, 25=J, 26=I

Codeword
 King, Wing, Wine, Wire, Wore.

| | | | | | | | | |
|---|---|---|---|---|---|---|---|---|
| 1 | 9 | 8 | 6 | 4 | 7 | 5 | 3 | 2 |
| 2 | 6 | 3 | 5 | 1 | 8 | 4 | 9 | 7 |
| 5 | 4 | 7 | 2 | 9 | 3 | 8 | 6 | 1 |
| 9 | 2 | 5 | 3 | 6 | 4 | 7 | 1 | 8 |
| 8 | 1 | 6 | 7 | 5 | 3 | 2 | 4 | 2 |
| 3 | 7 | 4 | 1 | 8 | 2 | 6 | 5 | 9 |
| 7 | 5 | 9 | 8 | 2 | 6 | 1 | 4 | 3 |
| 6 | 8 | 1 | 4 | 3 | 9 | 2 | 7 | 5 |
| 4 | 3 | 2 | 7 | 5 | 1 | 9 | 8 | 6 |

Hard
 Easy
Sudoku



CoventryObserver.co.uk LeamingtonObserver RugbyObserver

It's time to Like, Follow & Subscribe

BREAKING NEWS
WHAT'S ON
SPORT
INTERVIEWS

- CoventryObserver
- @CovObserverNews
- CovObserver
- LeamingtonObserver
- @LeamObs
- Leamington.Observer
- RugbyObserver
- @RugbyObserver
- Rugby.Observer



Hatton Garden Centre & Shopping Village

Make the Most of the August Bank Holiday at Hatton



Looking for a fun and inspiring way to spend your long weekend? Visit Hatton Garden Centre and Shopping Village this August Bank Holiday and enjoy a day full of fresh ideas, seasonal colour, and expert garden advice. Whether you're adding the final touches to your summer garden or planning ahead for autumn, you'll find everything you need – from beautiful plants and outdoor décor to friendly guidance and inspiration.

Shop, Stroll & Discover Something Special

Take your time exploring our charming Shopping Village, filled with unique independent shops, artisan gifts, and homegrown treasures you won't find on the high street. With plenty of treats, indulgences, and friendly faces, it's the perfect place to browse, unwind, and make the most of the long weekend..



Soak Up the Scenery & Relax at the Pub



Why not turn your visit into a full day out? Enjoy a scenic countryside walk along the nearby Grand Union Canal, taking in the famous Hatton Locks and the peaceful Warwickshire landscape. Then, head to the Hatton Arms for a relaxing drink or delicious meal with stunning views – the perfect way to toast the Bank Holiday in style.

Much More Than Just a Garden Centre!

Hatton Country World, Hatton, CV35 8XA
Hattonworld.com

PUBLIC NOTICES

PUBLIC NOTICES

Warwickshire County Council

ROAD TRAFFIC REGULATION ACT 1984

Warwickshire County Council has made the following Temporary Traffic Orders:

CAWSTON LANE, DUNCHURCH

Order Effect: Road closed to vehicular traffic. Reason for Order: Works to connect onto water mains and install 125mm PE bypass and meter. Order Commences: 18 August 2025 for up to 18 months.

Anticipated Completion: 22 August 2025. Access & Diversion: Northampton Lane, Alwyn Road, Coventry Road and vice versa. Contractor: McAndrews, Tel: 07399 662 559.

D3496 BAWMORRE ROAD, RUGBY

Order Effect: Road closed to vehicular traffic from Longwood Road to Plantagenet Drive. Reason for Order: Carriageway resurfacing and associated works, 09.30hrs-15.30hrs weekdays only, excluding Bank Holiday. Order Commences: 18 August 2025 for up to 18 months.

Anticipated Completion: 1 September 2025. Access & Diversion: Bawmore Road, A426, Northampton Lane, Alwyn Road, Longwood Road and vice versa. Access/egress to/from Overlade Lane will be via A426 Dunchurch Road only whilst works are in progress. Access/egress to/from Highgrove, Whittle Close and Bawmore Park may be restricted whilst works are in progress. Contractor: Balfour Beatty, Tel: 03452 415 302.

DRAYCOTE ROAD, DRAYCOTE

Order Effect: Road closed to vehicular traffic. Reason for Order: Works to lay approx 190 metres of duct in the verge. Order Commences: 18 August 2025 for up to 18 months. Anticipated Completion: 25 August 2025.

Access & Diversion: Draycote Road, Lias Line Cycleway, Straight Mile, Main Street and vice versa. Contractor: Callan Connect, Tel: 01213 275 167.

NORTH ROAD, CLIFTON UPON DUNSMORE

Order Effect: Road closed to vehicular traffic between 42 and 44. Reason for Order: To enable new water connection works. Order Commences: 20 August 2025 for up to 18 months. Anticipated Completion: 22 August 2025.

Access & Diversion: Church Street, Main Street and vice versa. Contractor: Network Plus, Tel: 01332 820 920.

RUGBY ROAD, BLUE BOAR, DUNCHURCH

Order Effect: Road closed to vehicular traffic there will be no access to A45 however, traffic exiting the A45 will not be affected. Reason for Order: To safely enable essential road testing works. Order Commences: 17 August 2025 for up to 18 months. Anticipated Completion: 17 August 2025.

Access & Diversion: Rugby Road, Blue Boar Flyover, Straight Mile, A45, London Road and vice versa. Contractor: Callan Connect, Tel: 01213 275 167.

Warwickshire County Council proposes to make the following Temporary Traffic Orders:

A426 RUGBY ROAD (COCK ROBIN ISLAND), RUGBY Order Effect: Road closed to vehicular traffic between its junctions with Bawmore Road/Dunchurch Road (A426), Ashlawn Road/Barby Road and Northampton Lane/Rugby Road. Reason for Order: Carriageway patching and associated works, 09.30hrs-15.30hrs. Order Commences: 3 September 2025 for up to 18 months. Anticipated Completion: 3 September 2025.

Access & Diversion: West side: A426, A428, A4071, A45, Western Link (anti clockwise route only), Coventry Road, A426 and vice versa. East side: A426, A428, Ashlawn Road and vice versa. Contractor: Balfour Beatty, Tel: 03452 415 302.

CHESTNUT FIELD, RUGBY

Order Effect: Road closed to vehicular traffic westwards from its junction with North Street. Reason for Order: To enable works for relocation of illuminated traffic signs and electricity supply. In addition, the One-Way traffic flow from the closure point will be temporarily suspended. Order Commences: 1 September 2025 for up to 18 months. Anticipated Completion: 1 September 2025.

Access & Diversion: North Street, Regent Place and Chestnut Field. Access to car parks and businesses will be available via the signed diversion route. Contractor: Balfour Beatty, Tel: 03452 415 302.

CAWSTON LANE, DUNCHURCH

Order Effect: Road closed to vehicular traffic. Reason for Order: To safely enable overhead cabling works, 09.30hrs-15.30hrs. Order Commences: 2 September 2025 for up to 18 months. Anticipated Completion: 2 September 2025.

Access & Diversion: Cawston Lane, Coventry Road, Alwyn Road, Northampton Lane and vice versa. Contractor: Sunbelt Rentals Ltd, Tel: 03700 500 792.

C127 COPSTON LANE, COPSTON MAGNA

Order Effect: Road closed to vehicular traffic from Fosse Way to Village Road North. Reason for Order: Carriageway patching and associated works, 08.00hrs-16.00hrs. Order Commences: 4 September 2025 for up to 18 months. Anticipated Completion: 4 September 2025.

Access & Diversion: Copston Lane, Mere Lane, Fosse Way and vice versa. Contractor: Balfour Beatty, Tel: 03452 415 302.

CATHIRON LANE, HARBOROUGH MAGNA

Order Effect: Road closed to vehicular traffic from the canal bridge to The Turkey Farm. Reason for Order: To safely enable renewal of a telegraph pole. Order Commences: 4 September 2025 for up to 18 months. Anticipated Completion: 4 September 2025.

Access & Diversion: Cathiron Lane, Easenhall Road, Rugby Road, Main Street, Brinklow Road and vice versa. Contractor: Core Highways, Tel: 03300 169 688.

D3190 ACACIA GROVE, RUGBY

Order Effect: Road closed to vehicular traffic from its junction with Lancaster Road. Reason for Order: Carriageway patching and associated works, 08.00hrs-16.00hrs. Order Commences: 4 September 2025 for up to 18 months. Anticipated Completion: 4 September 2025.

Access & Diversion: No suitable diversion. Contractor: Balfour Beatty, Tel: 03452 415 302.

FOXONS BARN ROAD, BROWNSOVER, RUGBY

Order Effect: Road closed to vehicular traffic. Reason for Order: Works to lay approximately 12m of duct. Order Commences: 2 September 2025 for up to 18 months. Anticipated Completion: 3 September 2025.

Access & Diversion: Foxons Barn Road, Hawlands and vice versa. Contractor: Core Highways, Tel: 03300 169 688.

For all of the above temporary orders, pedestrian access to and egress from properties and land situated adjacent to the length of road to be closed will be maintained at all times. Vehicular access will be maintained where possible.

To report any problems with these works or for further details of our current & planned roadworks visit our website warwickshire.gov.uk/roadworksmap or call us 01926 412515.

THE WARWICKSHIRE COUNTY COUNCIL

(B4429 COVENTRY ROAD, DUNCHURCH, RUGBY) (30 MPH, 40 MPH, 50 MPH & 60 MPH SPEED LIMIT) VARIATION NO.1 ORDER 2025

Warwickshire County Council has made the above-named Order the effect of which: - Extends the 40mph Speed Limit on the B4429 Coventry Road, Dunchurch (replacing the existing 50mph and 60mph speed limits and incorporating the new arm and realignment of the road) on the lengths of roads described in Schedule 1 below; and - Imposes a 40mph Speed Limit on the unnamed access road into Symmetry Park on the length of road described in Schedule 2 below.

The Order commences on Monday 18th August 2025. A copy of this notice, the Order, the Order which has been varied, a plan showing the lengths of roads affected and a statement of the Council's reasons for making the Order, can be inspected at Shire Hall, Market Place, Warwick during usual opening hours and are available to view on the website at https://www.warwickshire.gov.uk/news/2025/08/rugby-borough.

Any enquiries relating to the Order may be made to Phil Mitton, Communities Directorate, Shire Hall, Warwick by email to pmc@warwickshire.gov.uk or by telephone on 01926 412142.

Any person who desires to question the validity of the Order or of any provision contained in it on the grounds that it is not within the powers conferred by the Road Traffic Regulation Act 1984, or on the grounds that any requirement of that Act or of any instrument made under it has not been complied with in relation to the Order may within six weeks from the date of the making of the Order apply to the High Court for this purpose.

SCHEDULE 1 (40 MPH SPEED LIMIT)

B4429 Coventry Road, Dunchurch (i) From the centre-line of its junction with the unnamed road (the Symmetry Park access road) southwards to the roundabout junction with the A45. (ii) From its junction with the unnamed road (the Symmetry Park access road) to a point 154 metres west of the property boundary between 91/Holly Cottage.

SCHEDULE 2 (40 MPH SPEED LIMIT)

Unnamed Road (Symmetry Park Access Road), Dunchurch (from junction its with B4429) (i) From the centre-line of its junction with the B4429 Coventry Road, northwards for its entire length.

S Duxbury, Director of Strategy, Planning & Governance, Shire Hall, Warwick CV34 4RL Date 15 Aug 2025

Classified

PUBLIC NOTICES

REGINALD JOHNSON (Deceased) Pursuant to the Trustee Act 1925 any persons having a claim against or an interest in the Estate of the above named, late of 97, Jobs Lane, The Hill, Coventry, CV4 9EQ, who died on 19/07/2025, are required to send written particulars thereof to the undersigned on or before 16/10/2025, after which date the Estate will be distributed having regard only to the claims and interests of which they have had notice. Angeli Solicitors LLP, 117019 New Union Street Coventry CV1 2NY

PUBLIC NOTICES

GEOFFREY MILLS BUSH (Deceased) Pursuant to the Trustee Act 1925 any persons having a claim against or an interest in the Estate of the above named, late of 97, Jobs Lane, The Hill, Coventry, CV4 9EQ, who died on 22/03/2024, are required to send written particulars thereof to the undersigned on or before 16/10/2025, after which date the Estate will be distributed having regard only to the claims and interests of which they have had notice. Pennans Solicitors LLP, 17A Queens Road, Coventry, CV1 3DH (Ref:BSU0007/002)

PUBLIC NOTICES

LICENSING ACT 2003 - Public Notice LOVE AND LABOUR LTD is applying for the new grant of a Premises Licence for Lola, 49 Regent St, Leamington Spa CV32 5EE. If granted the application will allow the following licensable activities to take place: sale of alcohol for consumption on and off the premises & provision of regulated entertainment. Any person wishing to make representations in relation to this application may do so by writing to the Licensing Authority: Warwick District Council, Town Hall, Parade, Royal Leamington Spa, Warwickshire CV32 4AT. licencing@warwickdc.gov.uk. Representations may only be made for 28 consecutive days from the date of this Notice. A copy of the application for the grant of the above licence is kept by the Licensing Authority at the above address. The application can be viewed Monday to Thursday 9.00 am to 5.00 pm, and 9.00 am to 4.30 pm on Fridays, except Bank Holidays. It is an offence knowingly or recklessly to make a false statement in connection with an application. The maximum fine for which a person is liable on summary conviction for making a false statement is a Level 5 fine on the Standard Scale. 05/08/2025



PUBLIC NOTICES

Warwickshire County Council

ROAD TRAFFIC REGULATION ACT 1984 Warwickshire County Council has made the following Temporary Traffic Orders:

COVENTRY ROAD, BAGINTON Order Effect: Road closed to vehicular traffic. Reason for Order: To enable kirking and carriageway works. Order Commences: 18 August 2025 for up to 18 months. Anticipated Completion: 29 August 2025.

Access & Diversion: Coventry Road, Mill Hill, Howes Lane, St Martins Road, Bubbenthal Road, Chantry Heath Lane, Stoneleigh Road and vice versa. Contractor: L Healy Ltd, Tel: 07708 905 661.

For all of the above temporary orders, pedestrian access to and egress from properties and land situated adjacent to the length of road to be closed will be maintained at all times. Vehicular access will be maintained where possible.

To report any problems with these works or for further details of our current & planned roadworks visit our website warwickshire.gov.uk/roadworksmap or call us 01926 412515.

S Duxbury, Director of Strategy, Planning & Governance, Shire Hall, Warwick CV34 4RL Date 15 Aug 2025

PUBLIC NOTICES

Rugby Borough Council Town and Country Planning Act 1990 (as amended)

Application Number R25/0621 THE PASTURES, SOUTHAM ROAD, KITES HARDWICK, RUGBY, CV23 8AA Single storey rear extension with roof lantern and balcony arrangement

This development may affect a Public Right of Way

Application Number R25/0640 2-3, HIGH STREET, RUGBY, CV21 3BG Variation of condition 2 of R23/0722 (Change of Use of first floor and extension of second-floor to create 6, 1 bedroom apartments and terrace area) to amend layout and design during design rationalisation

This development may affect a Conservation Area

Application Number R25/0649 BLACK HORSE, 43, THE GREEN, BILTON, RUGBY, CV22 7LZ Proposed minor alterations to the site area at the front of the Public House premises to remove an area of existing tarmac surfacing and to provide new resin bound gravel surfacing.

This development may affect a Conservation Area

Application Number R25/0661 LAND TO THE EAST OF WOLVEY ROAD, STRETTON BASKERVILLE (Variation of Condition 12 (Access Improvement Works) and Discharge of Condition 13 (Construction Traffic Management Plan) of R23/1047 (Construction of a motorway service area)

This is a major development

Members of the public may inspect copies of the application, the plans and documents submitted with it online at: www.planningportal.rugby.gov.uk or in an electronic form at: Town Hall, Evreux Way, Rugby CV21 2RR between the hours of 9.00 am and 5.00 pm Monday to Friday until 06 September 2025. Please note a planning officer would not be present.

If you wish to make an appointment to discuss the application, please contact the case officer. Any person who wishes to make representation to the above mentioned Council about the applications should make them online - www.planningportal.rugby.gov.uk (search for application number and select comment) - or in writing by that date to The Chief Officer Growth and Investment, Town Hall, Rugby, CV21 2RR. If an application is determined by the Planning Committee, members of the public may have the opportunity to speak at the meeting. More details about public speaking are available from the Council or on-line at: www.rugby.gov.uk/speakingatplanning

For householder or minor commercial applications, in the event of an appeal against a refusal of planning permission, dealt with on the basis of representations in writing, any representations made will be sent to the Secretary of State, and there will be no further opportunity to comment at the appeal stage.

Nicola Smith Chief Officer - Growth and Investment MRTPI

PUBLIC NOTICES

Arctic Haulage Ltd, of 107 Beaumont Road, Bourneville, B30 2EB is applying for a licence to use M & J Storage, Lavender Hall Lane, Berkswell, CV7 7BN as an operating centre for 5 goods vehicles and 5 trailers.

Owners or occupiers of land (including buildings) near the operating centre(s) who believe that their use or enjoyment of that land would be affected, should make written representations to the Traffic Commissioner at Quarry House, Quarry Hill, Leeds, LS2 7UE, stating their reasons, within 21 days of this notice. Representors must at the same time send a copy of their representations to the applicant at the address given at the top of this notice. A Guide to Making Representations is available at www.gov.uk/object-hgv-operator-licence.

Goods Vehicle Operator's Licence Valentin Micu trading as Darym Transport Ltd of Flat 109, Northampton House, Wellington Street, Northampton NN1 3ND is applying for a licence to use Mitchell Potatoes Ltd, Boots Farm, Bourton on Dunsmore, Rugby CV23 9QQ as an operating centre for 2 goods vehicles and 2 trailers.

Owners or occupiers of land (including buildings) near the operating centres who believe that their use or enjoyment of that land would be affected, should make written representations to the Traffic Commissioner at Quarry House, Quarry Hill, Leeds, LS2 7UE stating their reasons, within 21 days of this notice. Representors must at the same time send a copy of their representations to the applicant at the address given at the top of this notice. A Guide to Making Representations is available at: www.gov.uk/government/publications/a-guide-to-making-representations-objections-and-complaints-goods-vehicle-operator-licensing

NOTICE OF APPLICATION FOR A NEW PREMISES LICENCE UNDER THE LICENSING ACT 2003

Notice is hereby given that Shamugalingam Navaneetham has applied to Coventry City Council for a NEW PREMISES LICENCE for Vill Local, 194 Binley Road, Coventry, CV3 1HG.

The applicant proposes to carry out the following licensable activities SALE OF ALCOHOL (OFF SALES) Monday 06:00-00:00, Tuesday 06:00-00:00, Wednesday 06:00 - 00:00, Thursday 06:00 - 00:00, Friday 06:00 - 00:00, Saturday 06:00 - 00:00, Sunday 06:00 - 00:00.

Any person wishing to lodge a representation concerning this application may write to: Licensing Authority, The Council House, Earl Street Coventry CV1 5RR

Or send an email to: licencing@coventry.gov.uk. The application may be viewed during normal office hours at the above address and further information may be available at www.coventry.gov.uk on the public register.

Any Representation relating to this application must be made in writing to the Licensing Authority by 28th August 2025

Please note it is an offence to knowingly or recklessly to make a false statement in connection with an application. The maximum fine on summary conviction for this offence is Unlimited

NOTICE OF APPLICATION FOR A NEW PREMISES LICENCE UNDER THE LICENSING ACT 2003

Notice is hereby given that Rasitha VS Thayaparan has applied to Coventry City Council for a NEW PREMISES LICENCE for 14 Lower Ford Street Coventry CV1 5QJ. The applicant proposes to carry out the following licensable activities To provide Sale of alcohol Monday to Sunday 06:00 am to 23:00 pm

Any person wishing to lodge a representation concerning this application may write to: Licensing Authority, The Council House, Earl Street Coventry CV1 5RR

Or send an email to: licencing@coventry.gov.uk. The application may be viewed during normal office hours at the above address and further information may be available at www.coventry.gov.uk on the public register.

Any Representation relating to this application must be made in writing to the Licensing Authority by 5th September 2025

Please note it is an offence to knowingly or recklessly to make a false statement in connection with an application. The maximum fine on summary conviction for this offence is Unlimited

PUBLIC NOTICES

Keeping you up to date with all the latest information on Planning Proposals, Traffic Notices, Goods Vehicle Operator Licences, Licences To Sell Alcohol, Probate Notices.....

Classified

TELEPHONE 01527 588688 FACSIMILE 01527 584371

PUBLIC NOTICES

PUBLIC NOTICES

NOTICE OF APPLICATION FOR A NEW PREMISES LICENCE UNDER THE LICENSING ACT 2003

Notice is hereby given that **ASIAN MART LTD** has applied to Coventry City Council for a **NEW PREMISES LICENCE** for **52 Far Gosford Street, Coventry, CV1 5DZ**.

Details of Application: To provide (sale/supply of Alcohol **OFF SALES**) Monday 11:00 – 23:00, Tuesday 11:00 – 23:00, Wednesday 11:00 – 23:00, Thursday 11:00 – 23:00, Friday 11:00 – 23:00, Saturday 11:00 – 23:00, Sunday 11:00 – 23:00

Any person wishing to lodge a representation concerning this application may write to: Licensing Authority, The Council House, Earl Street Coventry CV1 5RR

Or send an email to: licensing@coventry.gov.uk.

The application may be viewed during normal office hours at the above address and further information may be available at www.coventry.gov.uk on the public register.

Any Representation relating to this application must be made in writing to the Licensing Authority by **9 September 2025**.

Please note it is an offence to knowingly or recklessly make a false statement in connection with an application. The maximum fine on summary conviction for this offence is Unlimited.

PUBLIC NOTICES



Keeping you up to date with all the latest information on
**Planning Proposals, Traffic Notices,
 Goods Vehicle Operator Licences,
 Licences To Sell Alcohol,
 Probate Notices.....**

RECRUITMENT

HOLY TRINITY CHURCH

STRATFORD-UPON-AVON

HOLY TRINITY • ALL SAINTS LUDDINGTON • ST HELEN'S CLIFFORD CHAMBERS

Parish Nurse Vacancy

10 – 30 hours per week

£16.50 per hour, £32,298 pro – rata

This is an exciting opportunity for a NMC registered nurse to develop a new ministry of holistic health support in the Parish of Stratford upon Avon, in collaboration with the Minister for Nurture and Outreach and the church Pastoral Team.

The Parish Nurse will be based at Holy Trinity Parish Centre and will work with existing church contacts in the community, to signpost clients to relevant NHS and community-based health services, to help the client to understand their own health and well – being needs, and to advocate for them.

Key to the role, the Parish Nurse will also be able to provide spiritual and prayer support to their clients, when requested, and will be a bridge between the Church and the community. As such, it is a genuine occupational requirement for the candidate to be a committed practicing Christian.

For more information:

Contact: **01789 266316** or email: hr@stratford-upon-avon.org

Application packs can be found on the church website:
<https://www.stratford-upon-avon.org/staff-vacancies>

Closing date for applications: **Monday 25th August 2025**



GOT A VACANCY TO FILL?

Contact Caroline or Kelly on

01527 588625 • 01527 588749

caroline.birkenhead@bullivantmedia.com | kelly.taylor@bullivantmedia.com

SALES & WANTS

MISCELLANEOUS

BEDS NEW Doubles £95 Singles £59 King size £159. Second hand doubles £49 Singles £29 Fridges £49 Freezers £59 Can deliver 07703 925662

RECLINER CHAIR electric rise & recline £169 Manual recline chair £60 High seated chair £40 Can deliver 07703 925662

FREE two kitchen worktop panels laminate (white marble effect) 143cm x 158cm x 62cm 07532064191

3 sets lawn bowls, sizes 5 and 0 plus antique lignums. 2 bowls bags £25. Tel. 02476541642

HEAVY duty strimmer / cutter needs service extra blades £60 collect only 07963066799 Coventry

GRIM reaper scythe £130 collect only 07963066799 Coventry

ROOFBOX large square double locks £60 collect only 07963066799 Coventry

SET of 14 LH Golf Clubs Bag / Accessories Good Condition Taylor Made, Galloway, King Cobra £180 ono Tel: 07819015716

MISCELLANEOUS

SMALL TV Oak Effect Corner Unit As New £50 ono 07879015716

MAHOGANY Sideboard 3 drawers, 3 cupboards 940H x 1270L x 480D Good Condition £100 ono 07879015716

SIX Oak Dining Chairs (black seats) Good Condition £50 ono 07879015716

SAMSUNG Surround Sound Speaker Set (6 in total) - £60 ono 07879015716

BED frame 3ft pine headboard low foot end includes fixings & instructions VGC £30 01527 524412

BES metal frame folding single bed folds in half aged but good condition £10 01527 524412

FENCE posts 20 Rutland electric fence stakes new / used above ground height 88cm £20 01527 524412

DINNER set including plates, bowls, tea pot, mugs, cups & saucers 'Sunny Days' VGC £30 01527 524412

SUMP base for garden feature 88cm total diameter used but good condition £5 01527 524412

WILLIAM and Mary dvd complete box set £10 07813 706 158 (Shirley area)

WANTED

****WANTED: Vinyl Records CDs Cassettes**

Vintage or New **

Seeking classic rock, jazz, indie and rare finds. Cash paid

Call or text: 07765 142354 Or 01527 893992

Or email: welston@live.com

Paul (Albatross & Doomed Records)

CARAVANNING

Lunar Clubman SB

V.G.C.

2013 MODEL

£10,500

or nearest offer

please call Chris

07810 246 767

SERVICES

GARDENING SERVICES

STUART'S GARDENING SERVICES

Landscaping & Tree Surgery
 Fencing, Slabbing, Turfing, Block Paving, Bases, Mowing, Decking, Roofing and Guttering.
 Mini-digger/Dumper
 Fully Insured. Registered carrier of waste.

FREE ESTIMATES

02476 305992 • 07813 790889

01788 211064

www.stuarts-gardening-services.yolasite.com

CONSERVATORIES & GLAZING

DOUBLE GLAZING REPAIRS

Locks, Hinges, Handles, Glass, Windows or Doors
 New Doors/Windows
 Also Supplied/Fitted
07973 200 623

HOME IMPROVEMENTS

HANDY MAN

If you're looking for a fast and reliable service

Then call Lenny

- Plastering • Plumbing • Fencing
- Gardening • Flooring • Kitchens
- Bathrooms • Carpentry • Flat pack furniture

• Tiling • Painting

02476 443 996

07794 784 266

NO VAT CHARGE

KITCHENS

S.W INSTALLATIONS

Kitchens & Bathrooms
FREE DESIGN & QUOTATION
QUALITY KITCHENS & BATHROOMS SUPPLIED & FITTED

PLUMBING, CARPENTRY, TILING, WORKTOP & DOOR REPLACEMENT

(Supply & fit, supply only or fit only)

LOCAL TRADESMAN 20YRS EXPERIENCE

NO JOB TOO SMALL

01926 773386 or

07971 684 353

Special Family Announcements

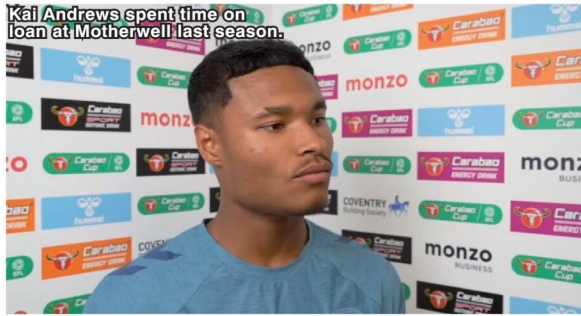


Births, Engagements, Weddings, Anniversaries, Happy Birthdays, Congratulations or sadly Deaths and In Memory Announcements can all be placed in your **Observer** to appear in printed newspaper weekly, and online247

You can call us on **01527 588688** or email details to us (including photograph if desired) with your telephone contact details and we will call you back to confirm cost reception@bullivantmedia.com

Prices start from just **£15** (inc Vat)

Kai Andrews spent time on loan at Motherwell last season.



Youngster keen to take City chance

by Aaron Sutcliffe
aaron.sutcliffe@bullivantmedia.com

FOOTBALL: KAI Andrews admitted his first Coventry City start was 'a great experience' after he impressed against Luton Town in the Carabao Cup.

The 19-year-old featured on the left-hand side as the Sky Blues secured a 1-0 against the Hatters at the Coventry Building Society Arena.

And while the teenager feels he best operates as a number eight, Andrews stressed his desire to help the team wherever he is needed on the pitch.

Andrews said: "It felt great to be out there in front of the fans.

"I think it was a really good opportunity for me to go and showcase myself on the pitch and I think it was just a great experience.

"[The manager said] just to go out there and express myself, play with the same confidence that I've had in training and just go and get

myself about the pitch.

"I would say number eight is my favourite [position], but obviously I played out as a left winger.

"I'm really just happy to be on the pitch, so whatever position I'm needed then I'm happy to go out there and do a job."

The Wales under-21 international made 11 appearances on loan at Motherwell in the Scottish Premiership last season.

And the midfielder felt the loan move helped him develop as both a player and as a person.

Andrews added: "I thought it was great and for my development.

"It was definitely what I needed to go out there and get as many minutes as possible under my legs and I think it was brilliant.

"It was a big difference from what I was doing.

"I was living at home with my parents and then I'm moving away to a different place, and I was completely on my own as a young kid.

"It was hard for me, but I think I dealt with it well and it just helped me to progress and develop as a person really."

Simms strike sends Sky Blues into second round

ELLIS Simms scored the only goal as Coventry City beat Luton Town 1-0 to advance to the next round of the Carabao Cup.

Simms struck from close range on 57 minutes to settle the first round tie at the Coventry Building Society Arena.

Luton went close early on as Cauley Woodrow headed a corner from the left wide of the post from six-yards out.

The League One side tested Ben Wilson soon after as the Sky Blues goalkeeper pushed Woodrow's powerful effort from distance to safety.

City responded with a chance of their own as Raphael Borges Rodrigues surged down the right and delivered a cross towards Simms who could only volley the ball over the crossbar.

Frank Lampard's side then spurned a glorious chance to take the lead as youngster Kai Andrews saw his effort from eight-yards out blocked behind by Tom Holmes.

However, the Sky Blues broke

the deadlock just before the hour mark when Rodrigues found Haji Wright in the box who in turn squared the ball to Simms who tapped home from a few yards out.

Substitute Jack Rudoni almost doubled City's lead with a low free-kick from 20-yards out with Luton stopper James Shea equal to the midfielder's set-piece.

Simms then fired wide at the near post after good work from Brandon Thomas-Asante down the left.

Luton almost levelled the game at the death only for substitute Jake Richards to head the ball over the bar from close range following a corner from the left.

Coventry will play Championship rivals Millwall in the second round of the competition in the week commencing August 25.

Millwall overcame League Two side Newport County to book their place in the second round of the competition.

Double gold for Fenemore in Tynemouth at British Coastal Rowing Championships

ROWING: TIM Fenemore, from Rugby, won double gold at the British Coastal Championships in Tynemouth.

Fenemore rows for Hollowell Scullers and the Coastal Barbarians and teamed up with members from Jersey, Eastbourne and Portsmouth in North Tyneside.

He raced in the men's masters double (60-plus) age category, the men's open coxed quad event and the mixed masters quad (50-plus) age category.

And Fenemore claimed two gold medals and also a silver at the Championships.

The British Coastal Championships saw crews from across Great Britain compete over a three-kilometre course.

This saw races compressed into one day of action after heavy waves led to the cancellation of the first day of racing.

Crews from as far away as Plymouth, Dover, Fishguard and St Andrews took part.

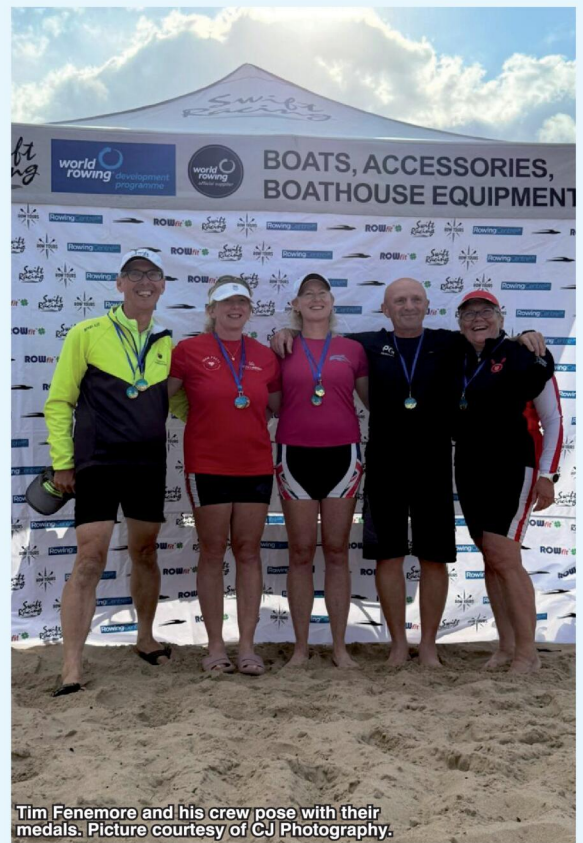
Fenemore and rowing partner Ricky Rouille raced in a double boat and won gold in the 60-plus age category after finishing third overall.

In the men's coxed quad race, Rouille took to the water alongside Rouille, Steve Reed and Jon Osborn, with Andi Davies at cox, in the 50-plus age group.

A close race ensued against a significantly younger crew as Fenemore just missed out on gold to take silver an improvement on the bronze medal he won at the last British Championships in 2023.

Fenemore and Rouille then teamed up with Davies and Fran Lane, with Tina Tidy at cox, in the mixed masters quad race.

And Fenemore claimed his second gold medal in the 50-plus age category in a challenging race as conditions worsened.



Tim Fenemore and his crew pose with their medals. Picture courtesy of CJ Photography.

O'Connor takes Stallard Series stage win

CYCLING: ROB O'Connor, from Rugby, continued his fine form with a race win in the penultimate round of the Stallard Series.

The final stage of the British Masters Cycle Racing competition takes place later this month.

A field of more than 40 riders took on the 11-mile circuit in Griffydiam, Leicestershire which took in the county's highest point, Bardon Hill, four times.

Breakaway specialist Nick Giles attempted to move clear of the pack before O'Connor attempted a counter attack with both riders brought back into the bunch.

O'Connor and Giles continued to push the pace with the former strongest on the climb.

However, O'Connor could not shake off the remainder of the bunch and opted to drop back on the last lap and save his energy for the final sprint.

A total of five riders attempted to pull clear heading up Bardon Hill for the final time only for O'Connor to move clear after he jumped across on the climb.

O'Connor and Steve Wilkinson battled it out for the race win over the final 300m to the finish.

And O'Connor hugged the inside line en route to his 11th race win of the season ahead of Wilkinson and Martin Fisher.



Rob O'Connor celebrates as he crosses the line in first place. Picture by Mick Brown.

CRS LTD
 Spring Lane South, Malvern WR14 1AT
 ATF's are the **ONLY** legal way to scrap your vehicles
BUYERS
 of all SCRAP Metals and SCRAP Vehicles
 The **ONLY** authorised treatment facility in Malvern!
 Best Prices Paid • Collection & Skip Drops Farm
 Equipment, Copper, Brass etc. • 50 Ton Weigh Bridge
ID REQUIRED - 01684 578081
 www.crs-malvern.co.uk

Observer SPORT



9 772040 128006
 Published by Bullivant Media Group Ltd, Webb House,
 Church Green East, Redditch, Worcestershire, B96 8BP
 Printed by Newsquest, Newspaper House, Osney
 Mead, Oxford, Oxfordshire, OX2 0EJ

VINYL RECORDS WANTED
 Buying since 1978
 Get your cash TODAY!
 I will come to you
Phone PAUL
01527 893992 | 07765 142354

www.rugbyobserver.co.uk

BRINGING YOU **ALL THE LATEST** SPORTS NEWS AND VIEWS FROM THE AREA

Borough triumph on Step Four bow

FOOTBALL: RUGBY Borough made a winning start to life as a Step Four club with a come-from-behind 3-2 victory against Boldmere St Michaels.

A late goal from Will Grocott earned Borough the points on the opening day after Cam Collins put the visitors ahead at the break at the Amber Arena.

However, goals from Harry Wakefield and Kory Burke turned the game in Boldmere's favour only for Luke Rowe to draw Borough level before Grocott grabbed the winner.

Collins broke the deadlock four minutes before half time when he looped a header over the Boldmere goalkeeper.

However, the home side drew level on 52 minutes when Wakefield scored from the penalty spot.

And Boldmere completed the turnaround on 72 minutes as substitute



Rugby Borough celebrate after scoring against Boldmere. Picture by Jeff Bennett.

Burke headed in Charlie Manners' cross at the back post.

Borough equalised seven minutes later as Rowe found the net after good work down the right.

And the visitors struck again on 81 minutes as Grocott curled a shot into the top right corner of the goal.

Rugby then played out a 1-1 draw

with AFC Rushden and Diamonds in their first home game of the season at Kilsby Lane.

The visitors took the lead courtesy of Tejan Thomas's header only for Collins to score a late equaliser for the home side.

Rugby host Loughborough Students on Saturday, August 16 with kick-off at 3pm at Kilsby Lane.

Valley respond to defeat in opener with away win

GRANT Joshua claimed his first win as Rugby Town boss after Valley battled to a 2-0 victory away at Wellingborough Town in midweek.

Goals either side of half time from Caine Elliott and Callum Griffin sealed Rugby's first league win of the season at the Dog and Duck Ground.

In a game of few clear-cut chances, the visitors broke the deadlock on 35 minutes when Elliott latched onto goalkeeper Marcus Bald's long ball up the pitch and finished through the legs of home stopper Brandon Ganley.

And Rugby sealed the points five minutes into injury time as Griffin bundled home his first Valley goal after substitute Joe Palmer saw his initial effort hit the post and roll across the face of goal.

That came after Valley suffered a 2-1 opening day defeat against Carlton Town at Butlin Road.

A late goal from Rivel Mardenborough halved the deficit after Lewis Durow and Ashley

Chambers put Carlton in command.

However, controversy reigned in injury time with Valley awarded a penalty only for the referee to eventually overturn his original decision.

Carlton broke the deadlock on 57 minutes when Durow powered home from Niall Davie's pass.

And the visitors doubled their lead on the hour mark as Chambers finished Liam Bateman's cross.

Valley responded eight minutes from time when Mardenborough fired home from substitute Dilano Reid's pass.

And the hosts thought they had won a penalty deep into injury time following a foul on Harrison Nee in the box.

However, the referee overturned his decision after a player suffered a head injury just before Nee was fouled.

Rugby are next in action against Corby Town on Tuesday, August 19 with kick-off at 7.45pm at Butlin Road.

CASHBROKERS

LEAMINGTON SPA

PAWNBROKING LOANS
 SCRAP GOLD & SILVER
 BUY BACK
 JEWELLERY & WATCHES
 COINS & BULLION

01926 258252

144 Parade, Leamington Spa, CV32 4AG

www.cashbrokersleamingtonspa.co.uk

CASH PAID

FOR GOLD, SILVER,
 COINS & BULLION

