

WANTED
Motorcycles and Scooters
 Any cc, condition or age,
 good prices paid
 07944 781 933 | 01926 257 643

New arrival helps town keep an eye on the ball



by **Andy Morris**
 andy.morris@bullivantmedia.com

A NEW giant rugby ball sculpture has been unveiled at Rugby railway station to help the birthplace of the game celebrate the Women's Rugby World Cup.

The sculpture, designed by Birmingham-based artist Olivier Jamin, was commissioned by Rugby Art Gallery and Museum to celebrate Rugby women who became sporting stars, from Olympic medallists to international hockey players and one of the co-founders of the Women's Cricket Association.

The sculpture at the entrance to the station was unveiled by Coun Maggie O'Rourke, Rugby Borough Council's spokesperson for partnerships and wellbeing, on the eve of the

first match of the World Cup.

Olivier's design features Rugby sporting stars such as Judy Simpson (née Livermore), who won gold in the heptathlon at the Commonwealth Games in 1986 and went on to star as Nightshade in the television series Gladiators.

Also featured is rower Lauren Henry, who won gold in the quadruple sculls at last year's Paris Olympics, and Kimberley Woods, who bagged a brace of Olympic bronze medals in the French capital after finishing third in both the women's kayak single (K1) and kayak cross finals.

Other sporting stars featured include Carole Quinton, who won silver in the 80m hurdles at the Olympic Games in Rome in 1960, and Marjorie Pollard, who played hockey for England from 1921 to 1937 and also co-founded the Women's Cricket

Association, narrowly missing out on selection for England's first ever cricket tour to Australia in 1934.

The town centre's collection of five giant rugby ball sculptures was first unveiled for the men's Rugby World Cup in 2015, with the design of the sculpture at the station refreshed for the men's Rugby World Cup in Japan four years later.

Coun O'Rourke said: "I'm delighted the new rugby ball sculpture celebrates the magnificent sporting achievements of Rugby women as the borough prepares to celebrate the kick-off of this year's Women's Rugby World Cup.

"The tournament promises to inspire a new generation of women rugby players, both in the birthplace of the game and beyond, and the legendary names featured on the new sculpture show where ambition, hard work and dedication can take you when you reach for the stars."

Olivier Jamin, an award-winning contemporary artist, explores colour, pattern and visual storytelling through vibrant, hand-drawn designs using POSCA pens and stencil graffiti.

As a Deaf artist, Olivier's public art aims to engage communities, celebrate Deaf identity and transform

public spaces.

Coun Neil Sandison, Rugby Borough Council's Liberal Democrat group spokesperson for partnerships and wellbeing, said: "We hope the medley of sporting stars featured in Olivier's design inspires the next generation of young women to aim high in their ambitions and be the best they can be in their chosen sport."

The council hosted a free screening of the tournament's opening match in Caldecott Park, where supporters gathered to watch England thrash the USA 69-7.



Tel: 0800 3032559
 Mob: 07773 911552
 www.drives4u.co.uk

Are you looking to improve or enlarge your driveway or patio?

We can provide you with a beautiful new patio or driveway in Coventry, Bromsgrove, Redditch, Solihull, Leamington, Kidderminster and Birmingham

5 Year guarantee

- We've designed and built just about every shape and size of driveway and patio you can imagine, so we will not be phased by your project.
- We strive to achieve 100% satisfaction and unlike other driveway companies, with us you pay absolutely nothing upfront.
- Give us a call and you could save upto £1000



Tel: 0800 3032559 | Mob: 07773 911552 | www.drives4u.co.uk

Delight as new moth species wings its way to Warwickshire



The Raspberry Clearwing moth has been spotted in Warwickshire for the first time.

by Andy Morris
andy.morris@bullivantmedia.com

A NEW species of moth has made its home in Warwickshire.

Two Raspberry Clearwing moths - which resemble wasps - were recently spotted at Ryton Pools Country Park. It is the first confirmed sighting of the species north of Warwickshire's border with Oxfordshire.

Raspberry Clearwings, which were attracted to Ryton Pools using a specific pheromone, are known to not generally travel far, so it has taken considerable time for them to make their way into the county.

The caterpillars of the species feed inside the stems of raspberry canes, making small tunnels and living there until their second year. They then form a small swelling, called a gall, at the base of the stem, changing into a pupa before finally emerging as adult moths.

Like many other clearwing moths, Raspberry Clearwings closely resemble wasps in both appearance and flight - but are completely harmless and unable to sting.

They are said to be excellent examples of 'Batesian mimicry' - where a harmless species mimics the warning colours of a more dangerous or unpalatable species to gain a protective advantage.

Ben Coleman, grassland specialist Ranger at Warwickshire County Council, said: "We're always excited to add new species to our records, but finding one that's never been recorded in Warwickshire before is something really special. It's a reminder of how important places like Ryton Pools are for wildlife, and how much there still is to discover."

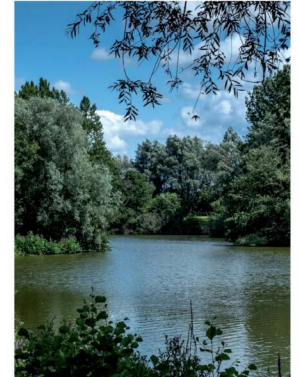
Coun Darren Cheshire, WCC's environment spokesman said the discovery was fantastic news for the county's biodiversity.

He added: "The discovery of the Raspberry Clearwing highlights how our rangers, volunteers, and local experts work together to monitor and protect wildlife, and shows just how much life our country parks support."

Over 3,000 species have been recorded on site at Ryton Pools - including all 14 species of bumblebee. The ranger team's habitat management and biodiversity initiatives

- such as the creation of wildflower meadows and conservation grazing with Hebridean sheep - continue to provide a home for rare and nationally important wildlife.

Visit tinyurl.com/35czj5d7 for more information.



The moths were recorded at Ryton Pools.



PHOENIX COACHES

	Adult	Child		Adult	Child
August			October		
24th Great Yarmouth.....	£29.50	£24.50	18th Blackpool		
27th Sandringham House.....	£50.00	£45.00	Illuminations	£29.50	£24.50
30th Skegness.....	£27.50	£22.00	25th Camden Market	£29.00	£24.00
September			November		
2nd Pub Lunch.....	£30.00	£24.00	27th Weston-Super-Mare.....	£27.00	£22.00
6th Cheshire Oaks.....	£27.50	£22.50	29th Liverpool &		
9th Lincoln	£27.00	£22.00	Afternoon Tea Cruise	£49.00	£37.00
20th Llandudno	£29.50	£24.50	31st Fantasy Island		
23rd Tewkesbury	£25.00	£20.00	Ingoldmells	£27.50	£22.00
October			November		
4th Gloucester Docks			1st Bury Market	£27.00	£22.00
& Quays	£24.00	£19.00	22nd London Shopper	£29.00	£24.00
11th Windsor	£27.50	£22.50			

Lytham St Annes & The Lake District - 26th-29th September 2025
Monterey Beach Hotel 4 Days/3 Nights £355 Per Person
 Price includes All coach travel, 3 nights accommodation, evening meal & breakfast, steam train, boat trip and entrance to Beatrix Potter experience.

Weston-Super-Mare Royal Grosvenor Hotel 6th-10th October 2025
5 Days/4 Nights £396 Per Person
 Price includes All Coach travel, 4 nights accommodation, evening meals & breakfast, cider farm and tasting, afternoon tea and steam train.

Blackpool - The Grand Hotel 31st October - 2nd November 2025
3 Days/2 Nights £195 Adult, £99 Child
 Price includes, All coach travel, 2 nights accommodation, evening meal and breakfast

www.phoenixcoaches.org.uk

Tel No 02476 350 811. 50 Southfield Close, Nuneaton. CV10 OBE



Events are lined up in Warwickshire for International Bat Night.

Bat night to get you all of a flutter

WILDLIFE lovers across Warwickshire are being invited to go batty.

International Bat Night - a global event dedicated to raising awareness about the importance of bats and their conservation - is taking place this weekend and Warwickshire residents have several opportunities to find out more about the nocturnal creatures.

Autumn Batts Alive is taking place at Ryton Pools Country Park on Saturday (August 30) at 8.30pm. The event offers an opportunity to learn about these fascinating creatures and see them in their natural habitat as they emerge at dusk to hunt.

Visit Ryton Pools Country Park website for more details.

A Mammal Group Event is taking place at Two Boats Inn in Stockton today (Friday) and a Bat Walk sets off from Priory Park in Warwick tomorrow (Saturday).

Visit warksbats.co.uk/aboutus/diary.aspx to find out more.

Warwickshire County Council's culture spokesperson Coun Darren Cheshire said: "Bats are a vital part of our local ecosystem,

acting as natural pest controllers and serving as key indicators of the health of our environment.

"Warwickshire is home to an incredible 15 of the UK's 18 bat species, and it's a testament to the diverse habitats we have across the county, from our ancient woodlands to our rivers and historic buildings.

"International Bat Night is a fantastic opportunity for us to shine a light on these amazing flying mammals and the crucial role they play. We encourage everyone to join us at Ryton Pools to learn more and appreciate these wonderful neighbours."

Bats are the only true flying mammals and play a critical role in controlling insect populations. In the UK, all bats are small, insect-eating species that use echolocation to navigate and hunt in the dark. Despite their ecological importance, bat populations have faced significant declines due to habitat loss and other threats. All UK bats are now strictly protected by law, and conservation efforts are helping them to slowly recover.

PUBLIC NOTICES

For all your latest information on
**Planning Proposals, Traffic Notices,
 Goods Vehicle Operator Licences,
 Licences To Sell Alcohol and Probate Notices...**

See
page
30

Rugby students play their part in county's positive GCSE haul

RUGBY pupils were among over 6,600 Warwickshire pupils who completed GCSEs or equivalent qualifications this year.

Early results indicate a positive picture across the county - although full results from individual schools are still being collated, and detailed data about the county's overall performance will be published by the Department for Education in the autumn.

Warwickshire County Council's Education spokesperson Coun Wayne Briggs said: "I'd like to congratulate all Warwickshire students who received their GCSE results.

"This is a significant milestone and the culmination of two years of dedicated hard work. We're incredibly proud of your achievements, and it's fantastic to see such positive early indications from schools across the county.

"Whatever your results, we want to assure you that your future can still be bright, and we're here to help you explore all your options to be as skilled and happy as possible."

Ashlawn School was greeted with cheers of joy when GCSE results arrived.

Principal Paul Brockwell said: "We are thrilled to celebrate the wonderful achievements of our GCSE students today.

"These young people have really given their all to their studies and we have seen improvements in both progress and attainment across a broad range of subjects.

"But what's really important is that all these students know where they're going next, the vast opportunities that are open to them and they have gone away happy with what they've achieved at Ashlawn."

Avon Valley School reported 'significant' increases in the grades achieved by its students in English and maths, with science also seeing an increase in student attainment.

Almost a quarter of students achieved a grade 9 in at least one subject.

Some 64 per cent of students achieved a Level 2 pass in both their English and maths, with over 58 per cent of all students gaining 5 or more Level 2 qualifications.

Headteacher Blake Francis said: "These results are the well-deserved outcome of their hard work, determination and positive attitude. Our students have shown great resilience and ambition, and we couldn't be more delighted to celebrate their success."

At **Lutterworth High School**, students celebrated after achieving an average GCSE grade of 5.2 - with a quarter of all grades at 9 to 7.

The school said its data suggests that the cohort - the first year group without progress measures due to Covid - have made 'excellent' progress.

Headteacher Julian Kirby said: "These results reflect the hard work and dedication of the students throughout their time at Lutterworth High School and especially during the examination period.

"On behalf of the staff I wish them all the best in their future studies and careers. We are very proud of what they have achieved."

Princethorpe College celebrated its best ever GCSE results, with more than half of all entries awarded the coveted 9, 8 or 7 grades.

A quarter of the cohort of 113 pupils achieved nine or more 9, 8 or 7 grades.

Headmaster Grove du Toit said: "We are absolutely delighted with the efforts of our Year 11 pupils, all the smiles and excitement this morning are so well deserved.

"They have worked extremely hard and we are very proud of each and every pupil's individual success and achievement."

At **Rugby High School**, nearly a quarter of all GCSE grades were a grade 9, with over half of all grades being grades 9-8.

The average grade achieved was a grade 8, with two per cent more grade 9s than 2019 and three per cent more grades 9-8 than 2019.

Head teacher Mark Grady said: "We could not be prouder of our students. They have worked incredibly hard, and deserve every success. To have exceeded the number of grade 9s and 8s achieved last year and in 2019 is a superb effort.

"I'm sure our students have read the doom-laden news stories about fewer top grades and 'return to pre-pandemic levels'. That speculation is difficult to read when waiting for your results. But I am so pleased to say that the 2025 cohort have been prepared brilliantly, and have achieved incredibly highly - above pre-pandemic levels."

Princethorpe College pupils celebrate their results with Headmaster Grove du Toit.



High achievers celebrate at Lutterworth High School.



JustGo!

For more information, or to book, please call
03332 342 514 Quote **OSG**

★ ★ ★ ★ ★ Trustpilot

Reader Travel



DURHAM CHRISTMAS FESTIVAL & BEAMISH
Departing Sat 6 Dec '25

Step into Christmas on this unforgettable break! Packed with quaint stalls winding their way between the historic cathedral and castle, Durham Christmas Festival is an enchanting way to spend an afternoon, and we also discover the open-air museum of Beamish.

Your break includes

- ✓ Return coach travel **from Rugby, Coventry**
- ✓ Overnight stay at a selected hotel (JG2 or JG3 rating) with breakfast
- ✓ En-route visits to Durham Christmas Market & Beamish

2 Days by Coach only £149
Single Supplement £50



NEWQUAY & THE CREAM OF CORNWALL TURKEY & TINSEL
Departing Mon 8 Dec '25

Join us for some early Christmas celebrations in Newquay, where there's plenty of festive-themed fun on offer at our hotel! Winter is a lovely time to enjoy the crisp clean air and explore the atmospheric streets of Cornwall's seaside towns and villages.

Your break includes

- ✓ Return coach travel **from Rugby, Coventry**
- ✓ 4 nights at the Pentire Hotel, Newquay (JG3 rating) with dinner & breakfast (includes traditional 'Christmas' dinner with complimentary glass of wine)
- ✓ Mulled wine reception on first evening
- ✓ Afternoon tea and Christmas cake on 'Boxing Day'
- ✓ Entertainment every evening
- ✓ Excursions to Penzance, St Ives & Falmouth

Optional excursion to Port Isaac & Padstow (£14pp)

5 Days by Coach only £329
Single Supplement £80

These packages are subject to Just Go! Holidays terms & conditions. Coach bookings are protected by 3rd party Coach Holidays & the Association of British Travel Organisers (Trust Ltd). All holidays are ATOL protected No.10299. Prices are per person, based on two people sharing a room & based on bookings made up to 7 days post publication, after which prices may fluctuate. Choices of date, hotel, airport or pick up location may incur a supplement. Please see website or call for full details.

visit us online at
justgoholidays.com/OSG




033 numbers are free within inclusive minutes packages otherwise standard rates apply.




New home for key services

CUSTOMER Services at Coventry City Council (CCC) has moved.

The service has moved from Broadgate House to Central Library. The same services are available.

The council's payment kiosks have also moved to the library.

Coun Richard Brown, CCC's Cabinet Member for Finance, said: "The move will bring all customer services alongside the wide range of library services and we hope it will make it even easier for residents to access council services and library facilities in one convenient location."

Coun Dr Kindy Sandhu, Cabinet Member for Education and Skills, added: "By bringing customer services and the library together under one roof, we're creating a one-stop hub in a central, accessible location."

Customer Services deal with a wide range of public enquiries, including help with Community Support applications, as well as initial enquiries about Council Tax and Housing Benefits.

The team also acts as the first point of contact for many other council services, such as Highways, Waste Services, Pest Control, Public Safety, and Housing/Homelessness support.

Financial pressures point to council £1.6m overspend

AN OVERSPEND of £1.6million is being predicted at Coventry City Council (CCC) for this financial year.

The council's First Quarter Financial Monitoring Report, which explains its financial position so far this year, is predicting a £1.6million over budget forecast for its net revenue spend in 2025-26.

At the same point in 2024-25, there was a projected overspend of \$7.1million.

The council says the report highlights 'the same pressures that are being faced by many areas of local government'.

A spokesperson added: "The council continues to face budget pressures within Adult Social Care, with overspends also being reported in Property Services and Development, Regeneration and Economic Development and City Services.

"These financial pressures are being caused by a combination of continued service demand, complexity and market conditions in social care, legacy inflation impacts, and income shortfalls due largely to the economic climate.

"Continuing difficulties in the external markets for adult social care are well documented around issues including the cost of highly complex cases and higher than planned levels of inflationary increases in placement costs."

Coun Richard Brown, Cabinet



Council House, the HQ of Coventry City Council.

Member for Finance, said challenges in social care affect longer-term budgeting because the council spends 83 per cent of its budget on social care, housing and homelessness.

He added: "I believe that we manage our finances extremely carefully and I know in terms of social care and housing and elsewhere we are doing everything we can to mitigate the impact of the national market and the demand for these services.

"It isn't unusual to forecast an overspend at this point in the year, but we can't be complacent and

must continue to be vigilant in our financial planning.

"When we set the budget earlier this year, we were able to find \$2.2m for a series of highways and street services improvements only because we had managed our finances carefully in all aspects of our budget.

"We need to continue to manage our finances prudently in order to focus our efforts on boosting frontline services that impact everyone."

The Council's capital spending is projected to be £187.6million, and includes major schemes pro-

gressing across the city - including secondary schools' expansion, Very Light Rail, disabled facilities grant (DFG), construction of Woodlands School, the City Centre South development and delivery of the City Centre Cultural Gateway development.

Cllr Brown added: "Our officers proactively work together to mitigate the underlying pressures that have been recognised within this forecast. This includes regular reviews of financial forecasts, continuation of recruitment controls, and to seek alternative funding opportunities from grants."



MALLORY COURT COUNTRY HOUSE HOTEL & SPA



Bank Holiday Afternoon Tea

Celebrate the Bank Holiday in true English style with a delectable afternoon tea served in our elegant spaces or picturesque gardens.

1.30pm – 4.00pm

Monday, 25th August | £39.50 per person

Acoustic Afternoons with Barton Hollow

Immerse yourself in the magic of live music as these talented musicians bring warmth and harmony to the afternoon...

2:45pm - 5:00pm

July - September (Selected Sundays)

A Taste of the Season

AN EXCLUSIVE DINING EXPERIENCE

An elegant evening of Champagne, canapés, and a four-course tasting menu by Executive Head Chef Stu Deeley, paired with fine wines, celebrating the best of late summer's produce.

Starting at 6.00pm

Thursday, 11th September | £159.00 per person



Prison officer smuggled phone & drugs into jail

A PRISON officer who was planning to use her position to smuggle items including mobile phones and illegal drugs into HMP Onley near Rugby has been jailed.

Tori Muddyman, 31, of Clarkson Close in Nuneaton, pleaded guilty to one count of conspiracy to convey list A articles (drugs) and one count of conspiracy to convey list B articles (phones) into a prison at a court hearing in 2021.

At Worcester Crown Court in July this year, Muddyman was sentenced to a total of 12 months' imprisonment.

In July 2019, Northamptonshire Police received a report alleging Muddyman was carrying illegal and banned items into the prison.

A subsequent search of her garage revealed a bag containing cannabis, steroids, a mobile phone, SIM cards and chargers, alcohol and tobacco.

Following Muddyman's arrest, she went on to admit she had accepted £2,500 from a serving prisoner to bring banned items into work with her.

In interview, she claimed that although she took delivery of the bag from a woman at Rugby train station, she did not go through with smuggling anything into the prison.

However, a search of the prisoner's cell uncovered fake drink cans containing drugs, and a mobile phone – a banned item within prisons – with bank records linking two of his known associates with payments made to her.

As a result of the investigation by the East Midlands Special

Operations Unit's (EMSOU) Regional Prisons Intelligence Unit (RPIU), Muddyman, the prisoner, and two women who made bank payments to her were charged with a range of offences.

In 2022, the prisoner involved received a further sentence of three years and four months, and the second woman who transferred money to Muddyman received a nine-month sentence, suspended for two years.

In April 2025, the woman who met Muddyman at the train station and transferred money to her was sentenced to two years and three months' imprisonment after being convicted at trial.

Speaking after Muddyman's sentencing, Det Insp Richard Cornell of EMSOU RPIU, said: "Prison officers have a duty and responsibility to maintain the safety and security of their

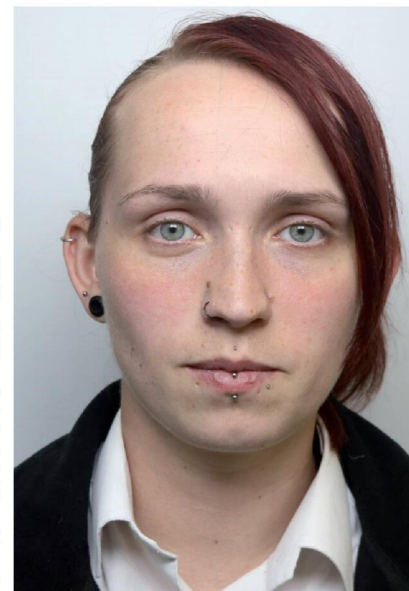
workplace and those residing within it.

"This includes preventing the presence of illegal drugs and prohibited items such as mobile phones and alcohol.

"Tori Muddyman made a series of terrible decisions that undermined that responsibility and, had she carried these items into HMP Onley, would have contributed to ongoing criminality and risk of harm to both inmates and staff.

"This has been a complex and long-running investigation, and I am pleased to see matters conclude with Muddyman receiving a custodial sentence which reflects the seriousness of her actions.

"Our team is dedicated to rooting out criminal activity in prisons, including by those responsible for upholding law and order within their walls."



Tori Muddyman, a former officer at HMP Onley, has been jailed for conspiring to smuggle banned items into the prison.



Cocaine dealer given 30 months sentence at crown court

A COCAINE dealer from Rugby has been jailed for 30 months.

Detectives out on patrol in an unmarked car saw Ersid Psyqli, 22, exchanging items with people. He was arrested on suspicion of being concerned in the supply of drugs.

In the room Psyqli had been renting, police found 40 wraps of cocaine worth around £400, and £228 in cash.

Psyqli ultimately pleaded guilty to being concerned in the supply of class A drugs and, at Warwick Crown Court, he

was sentenced to 30 months in prison.

Det Cons Matthew Rapkins, from Warwickshire Police, said: "We welcome this sentence.

"These substances destroy lives and wreck communities. Anyone involved in their supply

should be taken off the streets.

"We're constantly out and about in Rugby in plain clothes. There's space in custody for anyone who thinks they can get away with poisoning their communities to try to make quick cash."



Retirement Villages is part of AXA IM Alts

New cottages available 80% sold!

RETIREMENT VILLAGES

From coffee in the clubhouse to games on the lawn and unwinding in the allotments, say hello to a community where you can be involved as much or as little as you like. With fabulous facilities on your doorstep, beautiful homes to buy or rent, and support on hand when needed, discover what retiring differently means at Lime Tree.

Say 'hello' to retiring differently at

Lime Tree

Dunchurch, Warwickshire



Reserve your place here

Reserve your spot at our

Discovery Day

Wednesday 3rd September, 10am-2pm

Places are allocated by appointment only, so book yours to join in!

01788 462 214

limetreevillage.co.uk

Revealing the tricks of how magic helped change life for Angus



Being different isn't bad - it's powerful, says Angus.

by **Philippa Mingsins**
philippa.mingsins@bullivantmedia.com

AN AWARD-WINNING south Warwickshire young magician has shared his inspirational story of how magic saved his life in a new book.

'Naughty or Neurodiverse: An Aspie's Road To Magic' follows Binton resident Angus Baskerville's journey from misunderstood child to professional magician, thanks to a new passion he discovered while holidaying with family as a teenager.

Bullied, excluded, expelled from three schools, Angus grew up feeling like he didn't belong. Diagnosed with Asperger's and ADHD at 15, he finally had a name for the chaos he had always felt.

Now aged 29, he is enjoying

national success with a magic career that includes a return to The Edinburgh Fringe Festival this month, on the back of a sell-out summer one-man show, Hidden Powers.

He is also the proud recipient of a clutch of national awards, including last year, The Prestige Award, Ladies First Inspirational Awards and The Derek Award for standout acts at The Fringe.

Despite a packed schedule, Angus is still finding time to stay true to his pledge to 'pay it forward' by helping others overcome the challenges of neurodiversity through workshops, holiday camps, mentoring and public speaking.

He recalls: "School was a major challenge for me. Teachers didn't understand me because I was behaving very differently to the other students, and I was always

known by everyone as the 'naughty one.' I spent so much time in the naughty corner, at one school the teacher even named it after me.

"Lack of understanding of Asperger's Syndrome, when everyone thinks you're being odd or naughty when in actual fact it's something you can't help, can be a first-class ticket to serious mental health problems and it's why I urge people to fight to get their diagnosis as soon as possible.

"It wasn't until I found magic that I was able to make friends for the very first time. My social skills improved a lot."

As a Christmas gift in 2014,

Angus' parents Neil and Kate enrolled him on a magic course at the famous Davenport's in London, bolstered by which he went on to compete in - and win - his sixth form talent contest. He earned money through his talent for the first time, performing tricks for tips in his local pub.

At 19, Angus joined Leamington and Warwick Magic Society and, in 2020 he was accepted as a member of the prestigious Magic Circle.

Today, he is in high demand among the magic and public speaking circuits, performing to a who's who list of rich and famous at prestigious venues across the coun-

try, including Windsor Castle, The Grosvenor Hotel Park Lane and Greenwich Theatre in London.

After 13 years in the making, Angus now hopes his book will help others not only come to terms with, but embrace their diagnosis.

He added: "I have written this book to show people what it's like to grow up with Autism Spectrum Disorder (ASD) and Attention Deficit Hyperactivity Disorder (ADHD). I want to share what helped me and what didn't. I also want people to understand how being different isn't bad - it's powerful."



Here for Life's *Harder* Moments.

Practical and Compassionate Legal Support

When Relationships Break Down

Need *family* law advice?
Speak to our experts today.

0121 733 8000
wilkes.co.uk

Your legal partner
for all things in *life*.



Trust loses contract for child services

NHS health chiefs say they remain best placed to provide vital children's services in Warwickshire after losing the contract.

by Ian Hughes
ian.hughes@bullivantmedia.com

South Warwickshire University NHS Foundation Trust (SWFT) was the provider of Warwickshire's health visiting, infant feeding, family nurse partnership since 2011.

And understanding the long-term benefits these services can have for individuals and families, the trust invested significantly to enhance these services beyond what had been contractually funded.

But last September, a decision was made by the commissioners of the service, Warwickshire County Council (WCC), to re-tender for an Integrated Public Health Nursing Service for Warwickshire. This would create one Public Health Nursing Service, encompassing services for those aged up to 19 years (up to 25 with Special Educational Needs and Disabilities).

WCC has now awarded the contract to a provider outside the NHS.

A SWFT spokesperson said: "It is with huge disappointment that despite the demonstrable benefits of SWFT providing these services,

WCC have awarded the contract to a provider outside of the NHS.

"SWFT remains firm in its belief that they are best placed to provide these services, but recognising the importance of maintaining a stable service will now be working with WCC to mobilise the new contract as quickly as possible to reduce any impact on Warwickshire's children and families.

"We would like to thank our extremely hard-working teams for the on-going support they provide to families across Warwickshire."

WCC's health spokesperson Coun Anne-Marie Sonko said: "We want to deliver the best service for families in Warwickshire. By bringing together the health visiting and school nursing service under one contract, residents will continue to receive a high-quality public health nursing service, with improved continuity of care.

"We strive to be a child-friendly county where children and young people in Warwickshire have access to the services they need to grow up healthy and resilient, so we look forward to enhancing this essential provision."



The phoenix mosaic took several years for patients to complete.

Patients' phoenix mosaic unveiled

A 'HEALING' phoenix mosaic created by patients at St Michael's Hospital in Warwick over several years has been unveiled.

Those on the hospital's Ferndale Ward gave the phoenix life during art therapy sessions, which aim to help patients create, reflect and express themselves.

Each piece of glass placed in the artwork is regarded as a testament to resilience, connection and the quiet power of collaboration.

The mythical bird now adorns the front of the hospital and will greet people as they walk into the hospital grounds.

Art psychotherapist Cheryl Portlock said: "This mosaic is

more than just a beautiful piece of art. It is a metaphor - created from broken pieces of glass, it reflects the strength and spirit of those who have contributed to it: people who have lived through hard times, who have worked, raised families and faced personal challenges with great courage.

"And just like the phoenix rising from the ashes this mosaic reminds us that from brokenness can come healing, transformation and beauty. In this phoenix, each artist involved leaves a piece of themselves, something real, something enduring for others to find hope in."

Warwick mayor Jackie D'Arcy, who also opened St Michael's summer fete straight

after unveiling the work, said the phoenix was very appropriate for her theme of resilience.

"I feel very honoured to be invited to open this year's summer's fete and the unveiling of the magnificent phoenix mosaic," she added.

"That was so poignant... it resonated with why I chose resilience. It's a magnificent piece of art."

Art therapy is one of the services Coventry and Warwickshire Partnership NHS Trust provides to help people reconnect with who they are, re-build confidence, communicate and make sense of internal experiences and support their overall mental health recovery.

Royal Leamington Spa

Foodie Delights For All

SAT & SUN 6-7 SEPTEMBER

PUMP ROOM GARDENS
Royal Leamington Spa
CV32 4AA

Leam Food Fest

Featuring:

Cookery Theatre

Exhibitors

Live Music

Kids' Cookery School

FREE EVENT

SUPPORTED BY

Davisons Law
Moving you forward

LEAMINGTONFOODFESTIVAL.CO.UK

@LoveLeamington @TasteLeamington #TasteLearn

More bus services set to hit the road

MORE buses and shorter waiting times are being introduced in Coventry next month.

From September 1, National Express Coventry is increasing the number of journeys on the 6 and 6A services between Pool Meadow and Tile Hill, with services running up to every 10 minutes Monday to Saturday daytime.

Tile Hill Lane, Broad Lane and Banner Lane will also have increased bus frequencies, with services every 20 minutes.

Wait times for services 9, 11 and 12X will be reduced due to revised timetables which better coordinate with services between Pool Meadow and the Rail Station, with frequen-

by **Andy Morris**
andy.morris@bullivantmedia.com

cies increased to operate every five to 10 minutes during the day.

A new city centre stop is being introduced for services 15 to Whitmore Park and 16 to Keresley. The stop, located outside the Transport Museum at Hales Street, will mean more accessible connections for passengers changing from buses arriving at Pool Meadow and Trinity Street.

New early morning and late night journeys will also be added to the number 9, the 20A and the 12X services.

Services 8S between Cardinal Wiseman School and the city centre,

and 9S between Bishop Ullathorne School and Green Lane, will also be renumbered to 8B and 9B respectively.

Revised timetables from National Express Coventry include services 3, 6/6A, 8, 9, 11, 12X, 13/13A, 15, 16, 17/17A, 20/20A/20B and X1 from September 1.

And from September 29, the bus operator is introducing early morning journeys for service 15 from Whitmore Park and service 21 from Willenhall, both departing at 4:55am. The new early morning journeys connect passengers with the 5:20am service 11 from Pool Meadow to the Rail Station, enabling them to hop onto the first trains from Coventry to Birmingham



More services and new timetables across Coventry come into effect next month. Picture by Shaun Fellows / Shine Pix Ltd

and London.

Antony Goozee, managing director of National Express Coventry, said: "The changes that are being introduced next month will deliver an improved bus service, with bet-

ter connections, increased frequency, and greater certainty for our customers so they can reliably plan to get to where they need to go."

Visit www.nxbus.co.uk/coventry for the latest timetables.



Trojan Home chargers are installed in the pavement.

Innovative scheme for on-street charging to be trialed

A NEW electric vehicle (EV) charging method for drivers who park on the street is coming to Coventry.

Coventry City Council has partnered with Trojan Energy to pilot Trojan Home, which is designed for EV owners who do not have driveways.

Trojan Home chargers are installed in the pavement and connect to the homeowner's electricity supply via a small control box on their property.

The installation is free, and a monthly subscription covers a charging adaptor, maintenance, and equipment upgrades.

During the pilot, 20 households across Coventry will use Trojan Home units to charge their EVs.

The charge points will also be available to other residents on a pay-as-you-go basis, with households fully reimbursed for third-party usage.

The trial will run for 12

months, during which Trojan Energy and Coventry City Council will evaluate performance, usage, and community impact. If successful, a broader rollout will be considered.

Coun Jim O'Boyle, the council's Cabinet Member for Jobs, Regeneration, and Climate Change, said: "This pilot is another example of how we're using proven technology to make electric vehicle charging more accessible, affordable, and

inclusive for residents.

"This supports more people to make the switch to cleaner transport options, reduces emissions, and works towards our climate change goals.

"I encourage those who are interested to sign up and express interest as applications will be delivered on a first-come, first-served basis."

Visit the website at www.Trojan.energy/trojanhome to join the pilot.



INTERNATIONAL METALS & CABLE RECYCLING LTD

We purchase all Ferrous and Non Ferrous Metal Batteries and Cables

Collection Service Available

Long Marston Road, Long Marston, Stratford Upon Avon, Warwickshire, CV37 8AQ

01789 721 288

david@imrltd.co.uk

Open Mon/Fri - 8am - 5pm

FROM **Drab** TO **Fab**

create your own kitchen miracle with Joe's Doors

UP TO 7 YEARS
INTEREST FREE CREDIT**

Spread the cost of your new kitchen

We believe in miracles – and so will you!

At Joe's Doors, we give your kitchen a brand new look – without the mess, stress or massive price tag.

With no ripping out or emptying of cupboards, we replace your existing doors, panels and trims to completely transform your kitchen – often in **just two days***.

Choose from a huge range of stylish designs and enjoy a stunning new space that feels like a miracle – because it kind of is.

- **Transform today, pay later** – up to 7 years interest-free credit**
- **Free design, free quote, free survey**
- And absolutely **no pressure** – just Joe's honest advice



Ready for your miracle kitchen transformation?

Book your free visit today with Joe's Doors – and fall in love with your kitchen all over again.



Complete the look with a natural stone overlay from Quartzize

Why replace your worktops when this unique quartz overlay simply fits over your existing surface.

Here are some of the amazing benefits:

- **Timeless** – Looks clean and modern.
- **Hygienic** – A perfectly smooth surface.
- **Easy care** – Wipe with a neutral cleaner.
- **Durable** – Tough and scratch resistant.
- **Easily Installed** – Fitted in less than a day.*



3 easy steps to transform your kitchen:

- 1** We'll pop along and take some measurements...
- 2** Choose from our range of doors and worktops...
- 3** Our fitters will come back and transform your kitchen

- ✓ **NO NEED TO EMPTY CUPBOARDS**
- ✓ **NO MESS, NO FUSS**
- ✓ **MADE TO MEASURE**
- ✓ **FITTED IN A DAY OR TWO***



SEPTEMBER OFFER!

FREE SINK
WORTH £229**

Present this voucher to our Home Consultant on the day of your survey.



To find out how we can help you:

Call **02476 101914**
01926 800726
01788 422326

Visit joesdoors.co.uk

OVER 30 YEARS EXPERIENCE

JOE'S DOORS
AND OVERLAYS

Lines Open Mon-Fri: 8.30am-8.00pm Sat: 8.30am-6.00pm Sun: 9.00am-5.00pm.
*Based on a straightforward fitting. **Subject to status, terms and conditions apply.

Floating a charity idea

GOOD sports are being urged to sign up for The Shakespeare Hospice's annual Dragon Boat Race in Stratford.

The high-energy event on the River Avon, on Sunday September 21, promises fierce paddling, fun, and fundraising - with the goal of raising £50,000 to support the south Warwickshire hospice's vital services.

Teams made up of up to 17 people, seated in pairs, race 250 metres down the river to the beat of a drummer, who keeps everyone paddling in perfect unison. The result is a fast-paced, adrenaline-pumping competition that's as entertaining for the crowd as it is for the crews.

The hospice's community and events fundraiser Alison Stone said: "The Dragon Boat Race is one of our most exciting and loved events, bringing the community together in a vibrant show of teamwork and support. We're aiming to raise £50,000 this year, and we need everyone's help to reach that goal - so if you've been thinking about taking part, now's the time to get your team together."

"Right now, the hospice sector is facing immense financial pressure. With rising costs and increasing demand for our services, fundraising events like this are more important than ever to ensure we can continue to provide high-quality care to patients and families across our community. Every paddle, every pound truly counts."

Visit TheShakespeareHospice.org.uk/DragonBoatRace for more details.

Volunteers are recognised for work in community

VOLUNTEERS were recently celebrated for making south Warwickshire a better place

The South Warwickshire Volunteer Recognition evening, hosted by Warwickshire and Solihull Community and Voluntary Action (CAVA), was held at the Leamington and Warwick Sikh Cultural Community Centre.

The evening recognised more than 30 groups and individual volunteers across a range of categories, from community support and green action to youth development, transport initiatives, and arts in the community.

Tracy Southam, area manager for CAVA, said week in and week out, they all made an "incredible difference" in their communities.

Volunteers celebrated included:

Serving Communities - Helping Hands, Brunswick Hub Food Project, and Southam Lions

Connecting Communities - Warwickshire Pride, Meon Vale Residents Association, and Citizens Advice South Warwickshire

Heart of Health - Marie Curie Hospital Companions and Royal British Legion Galanos House Volunteers



Inspiring Young Lives - Leamington and Warwick Sea Cadets and Own Books

Green Action - Forest of Hearts Therapy Volunteers and Leamington Green Connections Group

Arts in Action - Armonico Consort and Escape Arts Volunteers

Support for Women and Parents - The Esther Project CIC and Home-Start South Warwickshire.

Individual volunteers were also honoured for their inspiring personal contributions. From supporting the visually impaired, providing community transport, mentoring youth, to transforming green spac-

es - each story highlighted the power of ordinary people making extraordinary impacts.

Among them were Dawid Kozlowski for his leadership at Belvedere and humanitarian aid efforts, Jenny Joseph for her work with Myton Hospice, founder of Young Minds Matter Sue Roberts, Jamie Rogers for his work supporting vulnerable individuals at the Fred Winter Centre and Tejpal Singh Mangat for his tireless dedication to the Sikh Cultural and Sports Community Centre.

For support with finding volunteer roles or for voluntary organisations needing volunteers, contact karen.thomson@wcava.org.uk or for support with setting up or developing voluntary groups, contact chris.freeman@wcava.org.uk.

Visit www.wcava.org.uk for further information.

The team from Escape Arts - Glenis Drayton, Marie Eaves, Nicola Patterson and Paul Mitchell with High Sheriff of Warwickshire Karen Lynch.

Upgrade to
Quartz worktops
for Free!

Summer
SPECIALS

50% OFF
kitchens

Nothing to pay until 2026

PROUD WINNER 2025

We're BKU's Independent Kitchen Retailer of the Year!

★★★★★

"So pleased with my Aristocraft kitchen, can't fault them."

Leamington Spa showroom
103 Warwick Street
Leamington Spa
CV32 4RJ
01384 262710
www.aristocraft.me

ARISTOCRAFT
Est.1982

THE BED FACTORY

SPECIALISTS IN BEDS AND MATTRESSES FOR PEOPLE WITH BACK, SHOULDER OR HIP PAIN.

SALE NOW ON

The Harrison Handmade Beds



Complete Range of Harrison FR **Chemical Free** Beds on Show

Special Price Ottoman



FREE HEADBOARD

Single £449 • Double £499
King £599 • Super King £699

Sutton Wooden Frame Hand Made Frame



Single £339 • Double £419
King £469 • Super King £589

1 WEEK DELIVERY ON ELECTRIC BEDS



FREE AT HOME SELECTION AVAILABLE

5 POINT MASSAGE MATTRESS NOW AVAILABLE TO TRY IN STORE.

We are specialists in electric adjustable beds and have A Large Selection Available Starting From £999

Avon Fire Side Chair



£669.00

Special Edition 2 Drawer Bed Set



FREE HEADBOARD

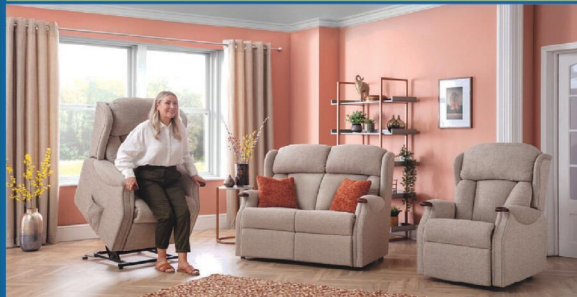
3'0 was £449 now £389
4'6 Was £599 now £499
5'0 was £699 now £599

Bedroom Furniture



Full Range of Bedroom Furniture Available

Celebrity studio in store



Mammoth Ultimate Health Mattress
5'0 Pure Mattress or 2000 Limited Stocks
Reduced from **£2139**
TO JUST **£1599**

Helps reduce back, shoulder and hip pain

FREE Local Delivery and FREE Disposal on orders over £499*

*Terms and conditions apply see in store

Leamington's Largest Independent Bed Retailer

We can supply a large range of beds in 1 to 2 weeks - 3' Single Beds also available - WE SUPPLY WHEN OTHERS FAIL

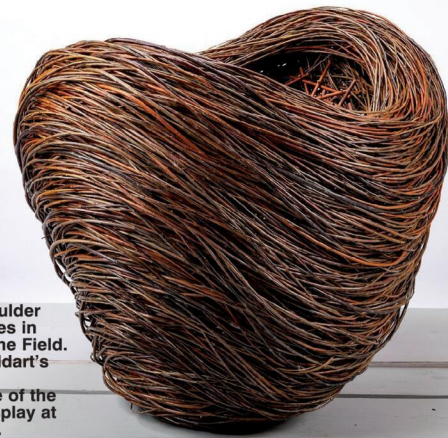
139 Regent Street, Royal Leamington Spa, CV32 4NX

01926 422404

sales@thebedfactory.co.uk
and www.thebedfactory.co.uk

Trustpilot ★★★★★

Exhibition pieces take inspiration from natural world



Sue Kirk's Boulder Form 2 features in Woven from the Field. Rosalind Stoddart's Meeting Point (BELOW), one of the textiles on display at the exhibition.

ROOTED in tradition with a contemporary twist, a new exhibition at Rugby Art Gallery and Museum showcases sustainable crafts created hand-in-hand with nature.

Woven from the Field features the work of willow weaver Sue Kirk and textile artist Rosalind Stoddart, who both grow and harvest the materials which sow the seeds of creativity.

The exhibition aims to highlight the artists' connection with the environment and the relationship formed with nature through years of planting, harvesting, nurturing the land and caring for the animals - both wild and domestic - which share the rural locations where the artists live.

Sue Kirk has weaved with organically grown willow for more than 25 years, having been drawn to the social history of basketry which has seen traditional skills handed down through the generations.

Her work transcends the boundaries of basketry to create contemporary sculptures, with Sue taking inspiration from rocks, boulders and stones shaped by the elements - the sculpture of the natural world.

Sue's larger, asymmetric pieces allow her to work with multiple, fine-coloured willows which give the finished piece a textile quality.

Rosalind, a trained artist, lives in rural Northamptonshire and credits her herd of alpacas for rekindling her passion for creating - a passion which found renewed focus during the pandemic.

Working with alpaca fleeces - either washed and carded or spun into yarn - Rosalind even grows the plants from which she makes natural dyes for her textiles, with each piece rooted in her engagement with the natural world.

Rosalind has described her work as 'slow art', with every part of the creative process completed by hand with meticulous detail.

Together, Sue and Rosalind's work celebrates traditional craft techniques and showcases the possibilities of forging a harmonious, creative collaboration with the environment.

Katie Boyce, Rugby Art Gallery and Museum's senior exhibitions and programming officer, said: "The blend of heritage techniques with a bold, modern aesthetic makes for a visually exciting exhibition which highlights both artists' deep connection with the environment.

"Rosalind's combination of alpaca fleece and flax complements the earthy colours and textures of Sue's willow weaving, making Woven from the Field a compelling, contemporary exhibition."

Woven from the Field opens at Rugby Art Gallery and Museum on Saturday September 13 and runs until Saturday November 15.

The exhibition runs alongside the accompanying exhibition, Found in the Fields, which explores the English



arable landscape captured on canvas by renowned painter and printmaker, Carry Ackroyd.

Coun Maggie O'Rourke, Rugby Borough Council's spokesperson for partnerships and wellbeing, said: "Woven from the Field combines rural tradition with contemporary art to make for a perfect autumnal exhibition at Rugby Art Gallery and Museum.

"Sue and Rosalind's commitment to working with nature in an organic, sustainable way has produced stunning pieces which we can't wait for visitors to see."

Woven from the Field has a supporting programme which includes Sustainable Saturday on September 20, a free drop-in event where visitors can discover sustainable options for arts and crafts from 10.30am to 3.30pm.

And on Saturday October 25 from 1pm to 3.30pm, Rosalind Stoddart visits the venue to host From Fleece to Fine Art, revealing the stories behind her work and the milestones on her creative journey. Visit www.ragm.co.uk/woven-from-the-field to book tickets at £5 each.

VERTICAL **ROLLER** **VENETIAN**

ROMAN **SHUTTER** **INTU**

BRIXHAM

BLINDS

Residential and Commercial

Brixham blinds are a well-established blinds company offering to trade and consumer. With a great range of quality bespoke and made to measure blinds by an established blind company you can trust.

Whether you're thinking of vertical blinds, roller blinds, venetian blinds or roman blinds, shutter blinds, all of our blinds come with child safety regulations and fittings to make sure your home is safe.

10 YEARS WARRANTY ON SHUTTER BLINDS

Available in beautiful and stylish Hard Wood and Faux Wood

WE WILL BEAT ANY LIKE-FOR-LIKE QUOTE

Visit us at: 21 Brixham Drive, Coventry, CV2 3LA
 Email: info@brixham-blinds.co.uk
 Contact us today for a **FREE** no-obligation quotation
T: 02476 666686 brixham-blinds.co.uk

Net gain for players as courts reopen

TENNIS courts at Caldecott Park have officially reopened following a near £75,000 refurbishment supported by the Lawn Tennis Association (LTA).

Both of the park's tennis courts now boast new hard court surfaces, net posts, nets, security gates and fencing after the council secured a £50,000 grant from the LTA Tennis Foundation's Park Tennis Project, supported by government funding.

The refurbished courts now have an online booking system, so tennis players can book a court online and receive a PIN code to gain access to the court for a game.

The refurbishment, carried out by Leicester-based tennis court specialists Posse Contracts, was officially unveiled at a launch event attended by representatives of the LTA.

Coun Maggie O'Rourke, Rugby Borough Council's spokesperson for partnerships and wellbeing, said the council planned for the courts to host local tennis leagues and offer Barclays Free Park Tennis sessions.

She added: "Through the Park Tennis Project, the LTA plans to deliver the biggest ever investment in park tennis facilities across Britain, offering players of all ages and ability the opportunity to pick up a racquet

and play. And with the LTA's online booking system, it couldn't be easier for Rugby residents to book - and thanks to the LTA's support, courts can currently be booked for free during an introductory period."

Both courts open seven days a week and can be booked via the LTA's website.

LTA chief executive Scott Lloyd said: "We're delighted to see the tennis courts in Rugby's Caldecott Park reopen to the public - and in better shape than ever."

"Park tennis courts are vital for providing people with opportunities to pick up a racquet and we want as many people as possible, of all ages, abilities and backgrounds, to enjoy playing tennis and being active."

"Thanks to this investment, the sport will be opened up to more players for years to come."

The park's tennis courts first opened more than 100 years ago. The total refurbishment bill came to just under £75,000, with the remaining cash coming from Section 106 contributions for outdoor sports provision from the developers of the former Cattle Market site in Railway Terrace.

Coun Neil Sandison, Rugby Borough Council's Liberal Democrat group spokesperson for partnerships and wellbeing, said: "We hope the public fully utilise the refurbished courts, which add to the many sporting activities in the borough."

To book a court, visit www.lta.org.uk/play and select 'book a court' before searching for Caldecott Park.



Ready to move up

BITTERSWEET celebrations took place at a Rugby nursery as pre-schoolers marked the end of their time there with a special graduation ceremony.

Dressed in traditional mortar boards, gowns and their best party clothes, children from Nature Trails Day Nursery in Cawston were given scrolls of achievement in front of their proud audience of parents, carers and practitioners.

They were then sent off in style with a summer garden party and picnic.

During the event, children performed Boogie Mites songs that they had been eagerly rehearsing during sessions in nursery, as well as enjoying dancing, face painting, a glitter tattoo station

and a homemade lunch with friends and family.

Nature Trails Business Administrator Georgina Ross-Barnard said: "We are so proud of our amazing pre-schoolers and all they have achieved during their time at Nature Trails."

"The graduation ceremony was a wonderful way to celebrate their journey and mark this special milestone, surrounded by the people who have supported them every step of the way. We wish them all the very best as they take their next steps into school life."

Children and staff at Nature Trails Day Nursery said a fond farewell to each other at the ceremony.



Front to back: Mayor Barbara Brown, Coun Maggie O'Rourke, Coun Richard Harrington, and Anna Hart, the LTA's delivery manager, at the refurbished tennis courts in Caldecott Park.



OUR BIG SALE IS STILL ON

OPEN 7 DAYS
CV6 5EY

INFLATION EVERYWHERE - BUT NOT AT CARPET MILL!

Everything is going up in price, the same for Carpets and this is why it pays to go to Carpet Mill. Manufacturers of yarn and other materials for making carpets have all had price rises and some manufacturers are busy changing their specifications to many ranges to compensate. They also get surplus rolls that they cannot sell to the big stores as they don't have enough stock left to service them.

Therefore, we are buying those rolls at a **FAT DISCOUNT** and passing it on to **YOU**.



Everything Reduced
BE QUICK

BRAND NAME CARPETS AT LOW LOW PRICES

From quality Axminster to budget cord
We are recommended for our low prices, quality service and extensive range throughout the Midlands. There are no R.R. prices on carpets, so if others give 50% offers or sales discounts, is it 50% off their normal high prices. ALWAYS compare with Carpet Mills normal prices!!!!!!

CARPET MILL

CROMWELL STREET (OFF RED LANE) COVENTRY CV6 5EY TEL: (024) 7666 1985

SOME CUSTOMERS TRAVEL MILES - YOU DON'T HAVE TO - WE ARE HERE

www.salecarpet.uk



Event is in business of connecting people

RUGBY Borough Council's (RBC) next business engagement event will take place in October.

The event aims to connect business support partners,

businesses from various industries across the borough, industry experts, councillors, and council officers.

It is designed to provide information about business support, foster new connections between businesses, and encourage innovative thinking in line with evolving industry trends.

Attendees will learn about the support RBC provides in collaboration with external partners - ranging from topics such as employment and skills development to the integration of AI technology into business growth strategies.

The event will include panel discussions, Q and A sessions, and opportunities to engage with innovative local businesses.

Sessions will be tailored to B2B for businesses in manufacturing, innovation and technology, supply chain and logistics - and to B2C for independents, town centre businesses, retail, food and drink, hospitality and service-based businesses.

Coun Louise Robinson, RBC portfolio holder for Growth, Investment, Digital and Communications, said: "Our previous business engagement events have been well attended and received positive feedback. Attendees welcomed the opportunities to network with other businesses and organisations providing business support.

"This latest event will be another chance to connect, build valuable relationships, and tap into the support available from across the borough."

Her Liberal Democrat counterpart Coun Isabelle McKenzie added: "These are fantastic opportunities for businesses to network with one another, find the right business support for them and learn something useful."

The event takes place at the Benn Hall from 8am on Thursday October 9.

Visit <https://tinyurl.com/mwxkd8hd> to register, or for more information on the event and the council's support for economic development and business support.



The play area (LEFT) now features a climbing wall, swings, a roundabout, slides and a wildflower meadow. Parish Council chairman Coun Toby France (BELOW) cut the ribbon.

LOOKING GOOD: FAMILIES in Harborough Magna came together to celebrate the opening of the village's new-look playground with a Party In The Park.

The upgraded play area now features a climbing wall, swings, a roundabout, slides and a wildflower meadow.

The £75,000 refurbishment was funded by Swift Ford Solar Farm, the SUEZ Landfill Community Fund and The National Lottery Community Fund, with villagers also raising money for planting around the benches.

Parish Council chairman Coun Toby France cut the ribbon to officially open the facility, before villagers enjoyed bubbly, a barbecue and plenty of playtime for excited youngsters.

The council also plans to team up with Early Birds Nursery in September to help kit out the site's Bug Hotel and add to the playground's attractions.



Coun France thanked everyone who supported the project, adding: "The council is delighted to provide a safe, fun, and inclusive space for children to enjoy for years to come."

Wellesbourne & Walton Parish Council

Is seeking tenders for their
Ground Maintenance,
Bus Shelter Cleaning and
Litter & Bin Emptying Contracts.

Further information can be obtained from
The Assistant Clerk to the Council

Mrs Chrissy Read,
2 School Road,
Wellesbourne,
CV35 9NH.

Closing date
22nd September 2025 at 12noon.

Email:
assistantclerk@wellesbourneandwalton-pc.gov.uk

Tel: **01789 841434**

MIDLAND Hand Clinic

Midland Hand Clinic is a locally based private service treating hand, wrist and elbow conditions.

We treat privately insured and self funding patients.

Mr G Shyamalan
Consultant Hand Surgeon

- Carpal tunnel
- Trigger finger
- Dupuytren's
- Arthritis
- Trauma
- Tendonitis
- Cubital tunnel
- Golfers elbow
- Tennis elbow

01827 892 952
www.midlandhandclinic.com

Is Hand Pain Holding You Back?

Whether it's the frustration of struggling with buttons, the difficulty of opening jars, or the sadness of not being able to plant bulbs in your garden, it can be truly upsetting when pain and discomfort affect your hands.

Many common hand conditions share similar symptoms, but understanding the signs can help you identify what might be going on. Can you spot the symptoms of these common hand conditions?

Common Hand Conditions and Their Symptoms

Carpal Tunnel Syndrome

Carpal tunnel occurs when a nerve in your wrist is put under pressure. You might be at higher risk if you have diabetes, are pregnant, or if your job or hobbies involve repetitive hand movements.

Symptoms to look out for:

- Pins and needles in the fingers, especially the thumb, index, middle, and half of the ring finger.
- Numbness in the hand.
- Muscle wasting in the thumb area (in more severe cases).
- Waking from sleep due to hand discomfort or numbness.

Dupuytren's Disease

Dupuytren's disease involves a thickening of the tissue in the palm, fingers, or thumbs, often causing fingers to bend inwards towards the palm. Risk factors include smoking, heavy alcohol consumption, manual work, diabetes, and a family history of the condition.

Symptoms to look out for:

- A finger that has started to contract (bend downwards) or a noticeable lump in the palm.
- It most commonly affects the ring and little finger, but can appear in any finger or even the thumb.

Common Cause of a Palm Lump: Thumb Arthritis

Thumb arthritis frequently affects the basal joint at the base of the thumb. This can make everyday small tasks, like doing up buttons, quite challenging.

Symptoms to look out for:

- Pain and stiffness at the base of the thumb.
- A reduction in grip strength.
- Clicking and cracking sounds in the joint with movement.

Trigger Finger

Trigger finger happens when a tendon in the front of your hand thickens and gets "caught," causing your finger to lock in a bent position.

Symptoms to look out for:

- A finger that locks down in a bent position.
- A clicking sound or sensation when trying to straighten the finger.
- It can affect any finger, and sometimes the thumb.
- Pain that radiates up the arm from the affected finger.

Why Choose Us? What Our Patients Say:

"An extremely nice man. Professional but very pleasant and caring. He listened to me and took the time to explain things and advise me. I felt confident in the treatment offered and would have no hesitation in consulting him again and would recommend him to others".

"I have been treated by Mr Shyamalan before and find him excellent. That is the main reason for using the clinic".

"Genuinely caring surgeon, very happy with how I was treated".

"I can only say 5 stars for Mr Shyamalan. Friendly, kind and very easy to talk to. Very happy after keyhole surgery to help my wrist problems. Highly recommended".

Get In Touch – We Can Help

If you're experiencing any of the symptoms listed above, and if hand pain is getting in the way of your day-to-day life, please don't hesitate to get in touch with us. We're here to help you understand your condition and find the right solution to get you back to doing the things you love.

www.midlandhandclinic.com

DO UP YOUR KITCHEN WITH A KITCHEN MAKEOVER!

GET THE LOOK BY
JUST USING NEW
KITCHEN DOORS
with FREE Worktops

WOW!
FREE
WORKTOPS

'Keep the old cabs and just
stick on some new Doors'

Our Kitchen Doors will transform your kitchen in a magical way! We have some amazing offers and now **FREE Worktops**. Its quicker and costs less than a total rip out. Request your FREE brochure.

KITCHEN
Doors
& WORKTOPS

STORES ACROSS THE MIDLANDS
Buy 6 or more cupboard Doors & Get **FREE Worktops**

0330 321 0461

doorsandworktops.com

Call direct 01384 660065 - 0800 448 80741

*FREE Worktops Offer - Full details instore or online

Kitchen Door Company
Doors House Wordsley West Midlands
Request a FREE brochure or home quote today
From around £3000 Complete.



HOLLOWAYS

A U C T I O N E E R S

EST. 1972

In Association with **Hansons Auctioneers**

Warwick Silver & Jewellery Valuation Day

Monday 1st September

12pm to 2pm

Valuations of Silver, Jewellery, Watches, Gold, Antiques and General Collectables.

Items may be left to be consigned into Auction

**The Racehorse,
34 Stratford Road, Warwick,
CV34 6AS**



Donations in aid of WCS Care



Free Home Visits | Estate Clearances & Downsizing

If you have a lot of items you want valuing, we offer a **FREE** home visit service where we can come to your home. Contact us for more info

T: Hansons Warwickshire 07470 459309

E: clivejones@hansonsauctioneers.co.uk

www.hansonsauctioneers.co.uk



Hansons Holloway's, Banbury, Oxfordshire, OX16 5NB



Officers took part in Operation Advance last week.

Multiple arrests in police swoop

POLICE arrested 26 people and seized thousands of pounds of drugs and counterfeit goods during a day-long operation across the city.

Teams from across the city took part in Operation Advance on Tuesday August 19, executing warrants, engaging with the public, conducting patrols and taking part in targeted operations.

Some 26 people were arrested on suspicion of offences including drug cultivation, weapons possession and for outstanding warrants.

Officers also conducted 20 stop-and-searches and seized 24 vehicles.

In Radford, a cannabis farm containing more than 100 plants was shut down by officers.

In the city centre, officers worked with Trading Standards to visit a number of shops, seizing illegal and counterfeit vapes and tobacco.

They also seized a large amount of illegal toys, including suspected fake dolls. The street value of the seized goods is estimated to be over £15,000.

A Multi-Agency Road Safety Operation (MARSO) was held at the Gallagher Retail Park, checking vehicles for safety and licensing, as well as giving out advice to drivers.

In the city centre, a number of knives and other weapons were seized during an operation at Pool Meadow Bus Station and the nearby Transport Museum.

An e-bike operation was also carried out which resulted in nine off-road bikes being seized.

Ch Supt Paul Joyce, commander of Coventry Local Policing Area, said: "This was a hugely successful day resulting in some excellent results."

"Thanks to all the officers involved, we were able to make a real impact during Operation Advance."

"Policing in Coventry is about more than just one day, however, and our teams are continuing to carry out operations and patrols round the clock to keep you safe."

"We rely on the public to help us by telling us where and when they see crime happening - this helps us take decisive action earlier and helps reduce crime."

Jail term for prolific Coventry shoplifter

A PROLIFIC shop thief who repeatedly targeted stores in Coventry has been jailed.

Luke Sargent, 28, stole items including flowers, pregnancy kits, radios, coffee and confectionary worth around £250 in just five days.

He struck at three shops in Lower Stoke, Henley and Willenhall between July 25 and July 29.

At Coventry Magistrates Court, Sargent he admitted theft and was jailed for 18 months.

PC Sylvia Walsh from Coventry Police's Stoke and Wyken neighbourhood team said: "We're working hard with local retailers and store security to identify persistent offenders, and this jail term has put a stop to Luke Sargent's criminality and disregard for people and their property."

Shoplifter Luke Sargent has been jailed for 18 months.



Patio Plants & Planters

at the garden lovers' garden centre

Farnborough Garden Centre
Harefurlong Nurseries

www.farnboroughgardencentre.co.uk

A traditional garden centre that focuses on providing quality plants, garden products & giftware

JAPANESE ACERS

ROSE TREES & BUSHES

CLIMBING PLANTS

TEDDY LOVERS
Come & visit our Treasured Teddies shop & see our huge range of bears, Cuddly Collectables & furry friends including loveable limited editions and everyday huggables

On A423 Southam Road, Nr Farnborough, Banbury OX17 1EL
Tel 01295 690479

OPEN SIX DAYS A WEEK
Tues - Sat 9 - 5.30, Sun 10.30 - 4.30
OPEN BANK HOLIDAY MONDAYS

A world of Choice

WHERE THINGS FOR YOUR GARDEN WON'T COST THE EARTH

Coventry Memory Singers

Singing group helps connect people living with dementia and their carers

A new Memory Singers group in Coventry is helping people living with dementia connect with loved ones and enjoy the therapeutic, social and cognitive benefits of music.

Coventry Memory Singers takes place at Coventry Dementia Partnership Hub, Everdon Road, Coventry, CV6 4FB, and is open to anyone with dementia or other neurological condition, and their carers, with upcoming sessions taking place on 11th and 25th



September and 9th and 23rd October, then twice a month until July 2026. Run by the renowned choir and music charity Armonico Consort, based in Warwick, this is the third Memory Singers group to be established, with others in Solihull and Warwick. Armonico's specially-trained professional musicians lead a fun and friendly session that includes warm-ups, activity songs and a wide variety of familiar tunes, with live musical accompaniment. There's also a chance to socialise over refreshments. Significant scientific research and inspirational TV documentaries such as Line of Duty actress Vicky McClure's 'Our Dementia Choir', have highlighted the positive effects of music as 'medicine'. These extend to unlocking memories, re-establishing cognitive pathways, improving confidence and positively affecting mood. Sarah Riddell, Operations Manager, Armonico Consort, said: "Singing for people living with dementia is such a joyous and liberating experience, and a much-needed chance for loved ones to connect. Participants at our existing Memory Singers tell us it's the highlight of their week, and we're delighted to



have launched our third group at Coventry Dementia Partnership Hub." As well as being keen to hear from potential participants, Armonico are also on the lookout for volunteers to lend a hand during the sessions. Coventry Memory Singers takes place at Bond's Hospital, Hill Road, Coventry CV1 4AX. Details about joining or volunteering from Sarah Riddell phone 07722 632242, email sriddell@armonico.org.uk or visit www.armonico.org.uk/communities

**ARMONICO
CONSORT**



Coventry Memory Singers



"Singing is a lifeline for my wife" Memory Singers Carer 2024

Thursdays twice a month 10.30am-12noon
Coventry Dementia Partnership Hub, Everdon Road, Coventry, CV6 4FB
No charge, donations welcome (suggested donation £5 per session, carers go free)

Supported by The General Charities of the City of Coventry, The Cecil Pilkington Charitable Trust, Kathleen Beryl Sleigh Charitable Trust, Coventry Municipal Charities, Batchworth Trust, The Diana Startin Foundation, Katie Bradford Arts Trust amongst many others

Upcoming Sessions: 11th Sept, 25th Sept, 9th Oct, 23rd Oct



Singing has been proven to help people living with dementia to unlock memories and re-establish cognitive pathways. Our sessions are led by specially-trained musicians and bring people together in a fun, friendly and safe environment. Starting with relaxed refreshments, followed by fun warm-ups, activity songs and a wide variety of familiar tunes, the sessions can help build new friendships and boost confidence, helping people to feel more positive and supported. They are open to anyone living with dementia or other neurological condition, but participants need to be accompanied by a carer.

For further information please contact Sarah Riddell:
sriddell@armonico.org.uk or call 07722 632242

Supported by The General Charities of The City of Coventry, The Cecil Pilkington Charitable Trust, Kathleen Beryl Sleigh Charitable Trust, Coventry Municipal Charities, Batchworth Trust, The Diana Startin Foundation, Katie Bradford Arts Trust amongst many others

Solihull

Thursdays twice a month 1-2.30pm
The Onward Club, 107 Helmswood Drive,
Chelmsley Wood, B37 7NS
No charge, donations welcome (suggested donation £5 per session, carers go free)
Supported by George H Collins Trust, E.H Smith Charitable Trust, Batchworth Trust, Michael Marsh Charitable Trust, Haremead Trust, Katie Bradford Arts Trust, The Gladys Wightwick Trust, Ratcliffe Trust, Lady Hind Trust, Florence Cohen Charitable Trust amongst many others
Upcoming Sessions: 11th Sept, 25th Sept, 9th Oct, 23rd Oct

Hamlet for the barbecue set offers a slice of real comedy

Theatre review

Fat Ham
RSC Swan Theatre

THERE have been, as you might expect, many Hamlets down the years at this theatre. From Schofield to Tennant vis Branagh and any number of young stars.

While it is tempting to say there's never been a Hamlet quite like this, that would not be strictly true. Re-stagings, re-imaginings and re-writes abound. Shakespeare's most introspective play has been a busy watering hole for generations, placed in fresh settings from every conceivable angle, supporting every conceivable agenda. Maybe we really have seen it all.

Fat Ham, James Ijames's bold and brash shake-up of Shakespeare, does however bow to nobody when it comes to energy, colour and sheer wallop.

Elsinore has decamped west to a back garden barbecue patio somewhere between the Fresh Prince of Bel Air and every Bill Cosby film you've ever seen. Think comic TV black stereotypes and then hype them up a couple of levels beyond manic.

Hamlet, a dungaree-clad moody teen called Juicy here, is, in the hands of Olisa Odele, a lost soul filled with angst and bitterness.



Olisa Odele steers Hamlet through a considerable makeover in Fat Ham. Picture by Ali Wright/RSC.

Pressured to follow the family blueprint and denied the chance to find freedom his is a bleak outlook.

So far so Bard-loyal but things soon start slipping off the scale.

Like most American TV comedies from which this production borrows copiously, the supporting cast offer a range of stock but madcap characters as sharp as they are con-

sistently overplayed.

Sule Rimi, doubling as uncle and ghost, sets out full-on and never drops. Corey Montague-Sholay and Kieran Taylor-Ford vie for

the role of sassy, irreverent sidekick while Andi Osho and Sandra Marvin drink deeply from the same well to bookend each other as the wild eyed, screeching, God-fearing mamma that every comedy must have.

Jasmine Elcock, following the distant steps of Ophelia, impresses throughout. Fine comic timing and, in a production where unless you keep right on the ball much will be lost to excessive blustering and pace, she's audible and understandable where others are not.

Director Sideeq Heard oversees some fabulous moments of verbal jousting, near-the-knuckle comedy and downright slapstick.

This Hamlet features costumes that smoke, Hamlet singing Radiohead, a brilliantly executed magic trick and a monologue about sex with a gingerbread man which may well outlive the rest of the play.

The ending, in case anyone thought things could hardly get camper, defies all such doubts and brings the whole to a raucous, resounding climax of joy and brotherly love the Bard somehow neglected to include in his own version.

It's great fun and, while its confused meandering messages may not exactly enlighten, they will certainly entertain.

Visit rsc.org.uk for performance and ticket details.

Matthew Salisbury

Special Family Announcements



Births, Engagements, Weddings, Anniversaries, Happy Birthdays, Congratulations or sadly Deaths and In Memory Announcements can all be placed in your **Observer** to appear in printed newspaper weekly, and online247

You can call us on **01527 588688** or email details to us (including photograph if desired) with your telephone contact details and we will call you back to confirm cost reception@bullivantmedia.com

Prices start from just **£15** (inc Vat)

IDEAL Roofline Renovations

We are a locally based firm specialising in roofing and property maintenance

- New Roofs • Felt & Battens Replaced
- Specialist in Flat EPDM Rubber Roofs
 - All Repointing Work, Chimneys
 - Ridge Tiles, Valleys, Verges & Walls
- New UPVC Fascias, Soffits & Guttering
 - Dry Verge & Dry Ridge Systems
- Clean & Clear Moss & Debris From Roofs
 - Guttering Cleaned & Repaired
 - All Repair Work

WE ARE NOT A COLD CALLING COMPANY

- FULL GUARANTEE • 14 DAY COOLING OFF PERIOD
 - NO PUSHY SALESMEN • REFERENCES AVAILABLE
 - NO PRESSURE SELLING
 - OPEN 9 AM - 5 PM MONDAY - FRIDAY
- We promise to beat any written quotation

FOR A FREE QUOTATION OR ADVICE CALL ON

OFFICE **01789 576 039** DIRECT **07727 190 379**

EMAIL: idealrenovations247@gmail.com

Mansley Business Centre • Stratford • Timphy's Bridge Road • Stratford-upon-Avon CV37 9NC

Share your views on healthy options

MAKING Warwickshire fit for the future is the aim of council health chiefs.

Adults who live, work, study, or are registered with a GP in Warwickshire are being urged to share their views about the county's healthy lifestyle services.

Warwickshire County Council currently commissions an Integrated Lifestyle Service known as Fitter Futures Warwickshire, which encourages and supports residents to lead healthier lifestyles.

The services, which include NHS health checks, weight management? and stop smoking services, are designed to support residents in making positive lifestyle changes to improve their overall health and wellbeing.

Warwickshire residents aged 18 years and above are invited to share their views about what the future of these services should look like in The Healthy Lifestyle Services Survey online at ask.warwickshire.gov.uk/bi/healthylifestyle-public.

For those working as health, social care, community, or voluntary sector professionals, an alternative version of the survey to share views from an occupational perspective is available at ask.warwickshire.gov.uk/bi/healthylifestyles-professionals.

professionals.

Both versions of the survey will close on September 7. Those requiring help with accessing or completing the survey, or to receive the survey in alternative formats such as a paper copy, should email phadmin@warwickshire.gov.uk or call 01926 731484.

The Healthy Lifestyle Survey for Warwickshire will gather feedback to help shape the future of the lifestyle services.

WCC health spokeswoman Coun Anne-Marie Sonko said: "It's important to make sure our healthy lifestyle services are meeting the needs of people in local communities across the county, as well as delivering a positive impact, especially for those facing the biggest health challenges."

"I encourage everyone who is eligible to share their feedback, as this will help us to make informed decisions about how we invest in, and deliver, these services going forward, helping everyone across the county to lead happier, healthier, and more independent lives."

Visit www.warwickshire.gov.uk/fitterfutures for more information about Warwickshire's healthy lifestyle services.

Extra cash aimed at upping survival rates

IMPROVING survival rates in life-threatening emergencies, such as out-of-hospital cardiac arrests, is the aim of a £142,000 grant to West Midlands Ambulance Service.

It is one of ten NHS ambulance charities in the UK to receive funding from NHS Charities Together through its £1.85million Community Resilience Grants Fund in partnership with Omaze.

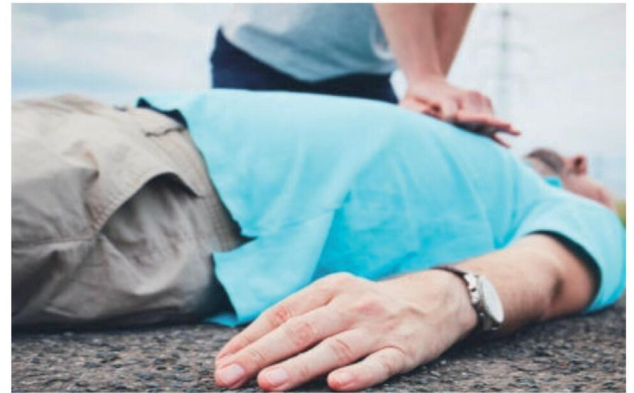
Working with 14 NHS ambulance charities up and down the country, the fund has been designed to help more people gain the knowledge, skills and confidence to respond in an emergency.

Currently, fewer than one in ten people who suffer a cardiac arrest outside of hospital will return home to their families.

But rapid action through early identification, CPR and defibrillation can increase chances of survival to more than five in ten.

The cash awarded by NHS Charities Together will allow WMAS to run a two-year project to provide basic life support and automated external defibrillator (AED) training to members of the public across the West Midlands with poorer rates or survival from an out of hospital cardiac arrest.

Cliff Medicott, WMAS regional community response manager, said: "We are incredibly grateful to NHS Charities Together for their support and funding.



"Their support is helping us bring vital training to communities that need it the most. In the first phase of this project, we will work closely with places of worship in areas where access to health and welfare services is limited, ensuring local people have the skills and confidence to respond in times of need which ultimately will help to save lives."

Jon Goodwin, NHS Charities Together head of grants, said the project had the potential to make a "huge difference" to people living in the West Midlands by helping them recognise the early signs of a life-

threatening emergency and how to respond.

He added: "In addition to helping improve chances of survival, by educating people to know how to respond in a health emergency – or even prevent it from happening in the first place – we can help reduce pressure on the NHS, which has never been more important."

The grant will fund a two-year project to provide basic life support and automated external defibrillator training to members of the public across the West Midlands.

★★★★★ Trustpilot

By Coach from Coventry, Rugby

Reader Travel

FOLKESTONE & CANTERBURY TURKEY & TINSEL

Departing Mon 1 Dec '25

It's time to Jingle All the Way to Folkestone and enjoy some pre-Christmas festivities at our fabulous hotel! With plenty of delicious Christmas food, a 2 for 1 bar offer and entertainment throughout our stay - we can be certain of a fantastic five days away!

SO MUCH INCLUDED...

- ✓ Return coach travel from Rugby, Coventry
- ✓ 4 nights at the Grand Burstin Hotel, Folkestone (JG2 rating) with dinner & breakfast (includes traditional 'Christmas' dinner)
- ✓ 2 for 1 bar (6pm-9pm) on selected drinks
- ✓ After-dinner tea and coffee
- ✓ Light entertainment every evening
- ✓ Excursions to Canterbury & Rochester

Optional excursion to Sandwich (£11pp)

5 Days by Coach only £259

Single Supplement £80

SPIRIT OF CHRISTMAS SHOW & BLACKPOOL ILLUMINATIONS

Departing Tue 2 Dec '25

Get ready for a festive experience like no other in Blackpool at Viva Blackpool! Enjoy a lively lunchtime show featuring cabaret, dancing, Bingo, a two-course lunch and a magical drive through the famous Blackpool Illuminations.

SO MUCH INCLUDED...

- ✓ Return coach travel from Rugby
- ✓ 2 nights at the Bluewaters Hotel, Blackpool (JG2 rating) with dinner & breakfast
- ✓ Admission to the Spirit of Christmas lunchtime show at Viva Blackpool
- ✓ Blackpool Illuminations evening drive

3 Days by Coach only £199

Single Supplement £50

LIVERPOOL & MANCHESTER CHRISTMAS MARKETS

Departing Sat 13 Dec '25

Experience the charm of Liverpool and Manchester's enchanting Christmas markets and wander through glowing stalls of quirky keepsakes and stocking fillers. Why not delight in some tasty treats while sipping on delicious aromatic mulled wine?

SO MUCH INCLUDED...

- ✓ Return coach travel from Rugby, Coventry
- ✓ Overnight stay at a selected hotel (JG2 or JG3 rating) with breakfast
- ✓ Visits to Liverpool & Manchester Christmas markets

2 Days by Coach only £109

Single Supplement £40

For more information, or to book, please call **03332 342 514** Quote **osg** or visit us online at justgoholidays.com/OSG

033 numbers are free within inclusive minutes packages otherwise standard rates apply.

These packages are subject to JustGo! Holidays terms & conditions. Coach bookings are protected by Bonded Coach Holidays & the Association of Bonded Travel Organisers Trust Ltd. Air holidays are ATOL protected No.30883. Prices are per person, based on two people sharing a room & no based on bookings made up to 7 days post publication, after which prices may fluctuate. Call to OSO numbers are free with inclusive minutes packages, else standard rates apply. Other fees of date, hotel, airport or pick-up location may incur a supplement. Please see website or call for full details.

SEPTEMBER BONANZA CARPET



Order now in September to benefit from

10%
OFF

20%
OFF

50%
OFF

Quality Carpets at
UNBEATABLE PRICES

at **GODIVA CARPETS**

You Can find your Perfect Carpet AND Save a Fortune too!
Huge Choice of Qualities and Variety of Colours to Compliment Any Interior
Plenty of Bargains to suit every pocket
LOW, LOW PRICES - GREAT, GREAT SERVICE

100's OF
**AMAZING CARPET AND
FLOORING DEALS ACROSS
OUR EXTENSIVE
RANGE**

Buying quality and affordable Carpets couldn't be easier - and Don't Worry, the Team at Godiva Carpets will make it even easier for you, to find your perfect carpet or flooring options

- **Top Quality Wilton Royal to Branded Room Sized Remnants to clear and ready to go (No reasonable offer refused)**
- **Landlord Deals from only £24**



**OUR NORMAL OPENING HOURS ARE
9AM TO 5.30PM MONDAY TO SATURDAY
(CLOSED ON SUNDAYS)**

02476 551200

**GODIVA CARPETS LTD, ARGYLE HOUSE, COLLINGWOOD ROAD,
EARLSDON, COVENTRY CV5 6HW**

VISIT OUR ONLINE STORE WWW.GODIVACARPETS.CO.UK



Brintons

**CAVALIER
FLOORING SYSTEMS**

**Lano
Carpet Solutions**

**Penthouse
Carpets**

ABINGDON

**ulster
www.ulstercarpets.com**

STAINFREE
The original and the most popular easy-clean carpet

**WILTON
ROYAL**

AND MANY MORE LEADING BRANDS

GODIVA CARPETS

A family business trading since 1953

**CLOSED
SUNDAYS**

Russell Lane

The Jewellers of Warwick

ARE HOLDING A
FREE VALUATION EVENT
BETWEEN THE DATES OF
18TH AND 30TH OF AUGUST

Russell Lane Jewellers have been established for over 50 years with expert knowledge of antiques, jewellery and silver items.

With the rising price of gold and precious stones, the value of jewellery has increased dramatically. A significant percentage of jewellery is potentially undervalued, which could threaten your ability to replace cherished items should anything happen to them. If you have family items that you wish to enquire about regarding age or value, this is the opportunity you have been waiting for!



Russell Lane's are running a **FREE** Verbal Appraisal event

Monday 18th until Saturday 30th
August 10am- 4.00pm

No appointment necessary, come along for your **FREE** appraisal where you can satisfy your peace of mind.



Additionally, for ONE day only **A VALUATION/ GOLD BUYING EVENT** **At the Greswolde Hotel, Knowle**

If you are unable to visit us at our shop for the free valuation of your treasured pieces, we are also holding a **FREE** valuation event at the Greswolde Hotel in Knowle on the

**Saturday 23rd August
9:30am-4:00pm**

We also purchase gold, silver and items of jewellery. Pop into the Greswolde for an immediate offer.



Website: www.russell-lane.co.uk

Tel: 01926 494 494 | Email: sales@russell-lane.co.uk

2 High Street, Warwick CV34 4AP

THE OLDEST JEWELLERS IN WARWICK

Gardening

Plan ahead for a splash of colour this springtime

SUMMER is drawing to a close and autumn is just around the corner – what a perfect time to think about planting.

The soil is warm and autumn rains will get plants established before winter sets in.

September is a great planting month, providing gardeners with time to reflect on their growing season successes and to think about what to do in the coming year.

It is also time to start planting spring bulbs. If as many bulbs as possible are planted in the grounds now, efforts will be well rewarded with a great show come springtime.

The joy about bulbs is that once planted, nothing else needs to be done. Old and new favourites can be chosen to brighten up and bring colour to the garden as it leaves winter behind.

by Sara Milne

Keeping colour in borders for as long as possible is top of the 'to do' list for September, so maybe consider incorporating late summer or autumn flowering plants such as Asters.

The name Aster comes from the ancient Greek word for 'star', although they are often referred to as Michaelmas daisies because of their typical flowering period in the autumn.

Asters come in blue, purple, red, pink and white each with a yellow centre, and in a variety of sizes from 30cm to over 2m tall. They are good cut flowers and are easy plants for beginners to try in the garden.

One of the most popular is Aster × frikartii 'Monch' which is highly valued for its long flowering period, producing an abundance of

lavender-blue daisies with golden-yellow centres from midsummer through to mid-autumn. It is a variety that is perfect for pollinators, brightening up borders or containers with minimal maintenance and growing to around 70cm tall.

A slightly smaller purple flowering perennial, also loved by bees and butterflies, is an old-fashioned herb that is gaining in popularity – hyssop.

It has beautiful dark green small pointed leaves with blue-purple spikes of flowers and is great as a shrub or a low growing flowering hedge. It also flowers in late summer and early autumn and its Mediterranean origins means it can cope well with dry soil.

Herbalists recommend hyssop tea to help relieve respiratory infections, the common cold and sore throats.



Hyssop is an old-fashioned herb that is gaining in popularity.

Top tips

In addition to some garden planning for the next growing season, top tips from the RHS for September jobs in the garden include:

- * Collecting and sowing seed from perennials and hardy annuals
- * Dividing herbaceous perennials
- * Staking tall late-flowering

perennials, such as asters, for added support.

* Dig up remaining potatoes before slug damage spoils them

* Put nets on ponds before leaf fall gets under way

* Keep up with watering of new plants, using rain or grey water if possible and start to reduce the frequency of houseplant watering.

* Clean out cold frames

and greenhouses so they are ready for autumn use

* Cover leafy vegetable crops with bird-proof netting and plant spring flowering bulbs.

And finally ...

"Autumn seemed to arrive suddenly that year. The morning of the first September was crisp and golden as an apple." JK Rowling

OFTEN IMITATED BUT NEVER EQUALLED

While all costs are going up - OURS ARE STAYING DOWN

Due to our customer friendly services of No Door Salesmen, No Showroom and little overheads

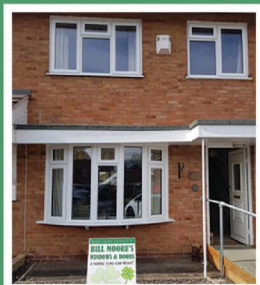


NEW FLUSH WINDOWS

BEAUTIFUL COMPOSITE DOORS
Fully fitted
Competitive Prices



UPTO 30% OFF ALL WINDOWS



ALL PRODUCTS HAVE A 10 YEAR INSURANCE BACKED WARRANTY

BILL MOORE'S WINDOWS AND DOORS

A NAME YOU CAN TRUST

1 Brookside Close, Stratford-upon-Avon, Warwickshire CV37 9PL

01789 415171 • 07729 689239 • www.billmooreswindowsanddoors.co.uk

RCN BEDS FURNITURE

£599

SAVE

RECLINERS

£899

OTTOMAN BEDS

£299

WHILE STOCKS LAST!

SAVE

SAVE

OAK/PINE BEDROOMS

SAVE

SAVE

CARPETS

SAVE

ITALIAN SOFAS

SLIDING ROBES

SAVE

SAVE

MATTRESSES

BEDROOM FURNITURE

SAVE

SAVE

WE ARE OPEN 6 DAYS 9AM-5PM

rcn
Beds & Furniture

HENLEY ROAD, COVENTRY
TEL: 02476 603254

Top tips for good night's sleep

by **Andy Morris**
andy.morris@bullivanmedia.com

A SLEEP expert has urged parents to start back-to-school bedtime routines as soon as possible.

Certified sleep coach Dr Jordan Burns from eachnight - eachnight.com - says a sudden shift in bedtime can be stressful for children.

He advises parents to implement a back-to-school sleep schedule gradually.

He said: "Many children have fallen into late-night habits during summer holidays due to a lack of routine. However, as most primary school children need nine to 11 hours of sleep and teenagers need eight to 10 hours, it's vital they receive enough rest before the new school year starts.

"Begin shifting bedtimes 15 minutes earlier every few days until you reach the term-time target. This gradual change helps the body clock adjust without resistance, and reduces the risk of kids feeling drained during the day."

This advice comes after NHS research found that nearly two fifths of children aged eight to 16 years experienced sleep problems three or more times each week.

Dr Burns added: "The brain responds well to predictable patterns.

"A calming 30-minute routine signals to children that sleep time approaches.

"To make the most of the transition period, it's important to keep



this routine the same each night - even at weekends."

Here is some advice from Dr Burns to help make the return-to-school bedtimes as successful as possible.

Poor sleep increases the risk of catching a cold

Without this transition period, children and teens are at risk of not getting enough sleep. This can affect everything from

their mood and attention span to their memory and immune system.

A strong immune system is especially important in September, when a new school year means new germs spread through close contact with classmates and a spike in colds.

Limit screen time to avoid problems falling asleep

Calming bedtime routine may include relaxing activities like a warm bath, reflecting on the day, or

reading a book, but it should avoid device use wherever possible.

Blue light from screens disrupts melatonin production, the hormone that makes you feel sleepy) and can linger in your system for up to eight hours.

He recommended a light snack if children felt hungry before bed, ideally something containing tryptophan - a sleep-promoting amino acid found in dairy products, bananas and nuts.

Declutter the bedroom to create a sleep sanctuary

The sleep environment plays

a huge role in how quickly children nod off and whether they stay asleep.

It is likely a child's bedroom has evolved over the summer holidays to become a cluttered playroom or messy space, but this will make it harder to encourage sleep.

Keep rooms cool, dark and quiet. For those who are scared of the dark, use a very dim night light that does not emit blue wavelengths.

Blackout curtains can also help maintain sleep during early summer mornings or prevent street lights from disrupting sleep.

Avoid late-night snacks or fizzy drinks - for all ages

Avoid giving children caffeinated drinks or sweet treats like chocolate after midday.

Even a heavy meal too close to bedtime can disrupt sleep quality.

This also applies to young teens, as sugar and caffeine are stimulants that block adenosine (the chemical that makes you feel sleepy) and can linger in your system for up to eight hours.

Good sleep hygiene habits established in childhood often carry into adulthood.

By teaching children the importance of quality sleep now, parents give them valuable skills for life.

Check out our E-Editions!

Coventry Observer .co.uk

Upgraded route set to improve

Get Much Needed Extra Space With Our New Offer For Your Family And Friends

Windows Plus

Windows | Drivers | Comasterories | Patches | Freecac & Softite

Windows Plus 02416 238222

www.windows-plus.co.uk

Rugby & Lutterworth Observer

Obs

Izzy di her to

DRIVES

Are you looking to i your drives

We can provide you with a free Coventry, Birmingham, Stoke

5 Year g

Tel: 0800 303259 | Mob: 07773 911552 | www.drives4u.co.uk

Leamington Observer

FINE JEWELLERY

Homes to a re

DRIVES

Are you looking to i your drives

We can provide you with a free Coventry, Birmingham, Stoke

5 Year g

Tel: 0800 303259 | Mob: 07773 911552 | www.drives4u.co.uk

www.coventryobserver.co.uk/editions
www.rugbyobserver.co.uk/editions
www.leamingtonobserver.co.uk/editions

The same paper you love on your **mobile**, **tablet** and **computer**

Slimming World

feel real good

Amy lost 3st 12lbs
(24.5kg) in 9 months



free
membership*

new
group
experience
even better
results

MONDAY

WARWICK

The Nelson Club
8am, 9.30am & 11am
3.30pm, 5.15pm & 7pm
Angie - 07538620862

NEW CONSULTANT & GROUP
WARWICK
Newburgh Primary School
5.30pm & 7pm
Jo - 07730 922319

TUESDAY

NEW CONSULTANT KENILWORTH

St John's Church Hall
9.30am
Gemma - 07872396230

WEDNESDAY

NEW CONSULTANT WHITNASH

St Joseph's Church Hall
5.30pm & 7pm
Gemma - 07872396230

LEAMINGTON

Methodist Church
Dale Street
8.30am, 10am & 11.30am
Sue - 07815542928

KENILWORTH

Waverley Centre
5.30pm & 7pm
Sue - 07815542928

NEW GROUP WARWICK

Church Hall
West street
5.30pm & 7pm
Kristina - 07783 746876

THURSDAY

WHITNASH

St Joseph's Church Hall
9.30am
Angie - 07538620862

LEAMINGTON

St Mary's Church Hall
St Mary's Road
5pm & 6.30pm
Jess - 0777 630 3421

CUBBINGTON

Cubbington Social Club
5.30pm & 7pm
Beth - 07826459036

FRIDAY

LEAMINGTON

Leamington Rugby Club
8am & 9.30am
Angie - 07538620862

LEAMINGTON

St Mary's Church Hall
St Mary's Road
9.15am & 10.45am
Jess - 0777 630 3421

SATURDAY

NEW VENUE

WHITNASH
St Joseph's Church Hall
8am & 9.30am
Gemma - 07872396230

NEW CONSULTANT WARWICK

Emscote Infant School
8.30am & 10am
Mel - 07926 575375

real food, real support, real results

*When you commit to 6 or 12 weeks of group support between 17th August and 20th September 2025. Terms and conditions apply, visit slimmingworld.co.uk/offers for more information.

If you're taking
weight loss drugs
we're here to help you
build healthy habits!

#ALSLetsMe

www.arnoldlodge.com



ARNOLD LODGE

4-18 yrs Co-educational Independent Day School



ALS Lets ME ACHIEVE

What will your child be?



**JOIN US AT OUR OPEN DAY
ON SATURDAY 27TH SEPTEMBER
10:00AM - 1:00PM**



**YEAR 7
ASSESSMENT DAY
TUESDAY 7TH OCTOBER**

01926 778050

admissions@arnoldlodge.com

15-17 Kenilworth Rd, Leamington Spa, Warwickshire CV32 5TW

Appointments

www.careerfinder247.co.uk

TELEPHONE 01527 588688 FACSIMILE 01527 584371

Democratic Services Apprentice
37 hours per week, fixed term contract
£25,583 - £26,824pa

Join us as a Democratic Services Apprentice and earn while you learn! This is a fantastic opportunity to gain hands-on experience, develop practical skills, and work towards a nationally recognised qualification - all while receiving a salary.

Our apprenticeships offer real-world training, career progression opportunities, and the chance to work alongside experienced professionals in a supportive environment. Whether you're just starting out or looking to change direction, our inclusive programme is open to all and designed to help you build a successful future in local government.

As part of this exciting Apprenticeship opportunity, you'll benefit from dedicated training time - at least 20% of your working hours - to help you successfully achieve the Level 4 Governance Officer Apprenticeship. This structured learning is designed to equip you with the knowledge, skills, and confidence to thrive in a governance role, with full details available on the Institute for Apprenticeships and Technical Education (IfATE) website. It's a fantastic way to grow your career while making a real impact in local government.

Apprenticeships are funded by the UK Government and there are some rules which we need to consider to establish eligibility for this opportunity. In particular:

- You will have been a resident in the UK for the last 3 years prior to the start of the apprenticeship or fit the criteria of eligible residency status in the Apprenticeship Funding Rules.
- You do not already hold the same or similar qualifications.

Please visit our website: [Stratford-on-Avon District Council - Current Vacancies](http://Stratford-on-Avon-District-Council-Current-Vacancies) or email hr@stratford-dc.gov.uk to see the full recruitment information pack and to apply.

For an informal chat about the role, please contact Macer Nash, Democratic Services Manager at macer.nash@stratford-dc.gov.uk or Ann Banks, Senior Democratic Services Officer at ann.banks@stratford-dc.gov.uk

Applications will close at midnight on Sunday 14 September. Interviews will be held week beginning 29 September.

The Council is committed to equality of opportunity and aims to create a welcoming, inclusive workplace where we are all able to bring our whole selves to work and perform at our best.

WWW.STRAFORD.GOV.UK

GARDEN AND MAINTENANCE PERSON

Required in Rugby
3 mornings per week
Starting 1st October

Contact
07984 102435

DOMESTIC HELP

Required in Rugby
3 mornings per week
Starting 1st October

Contact
07984 102435

Wellesbourne & Walton Parish Council

Is seeking tenders for their
Ground Maintenance,
Bus Shelter Cleaning and
Litter & Bin Emptying Contracts.

Further information can be obtained from
The Assistant Clerk to the Council
Mrs Chrissy Read,
2 School Road,
Wellesbourne,
CV35 9NH.

Closing date
22nd September 2025 at 12noon.

Email:
assistantclerk@wellesbourneandwalton-pc.gov.uk
Tel: **01789 841434**

GOT A VACANCY TO FILL?

Contact Caroline or Kelly on
01527 588625 • 01527 588749

caroline.birkenhead@bullivantmedia.com | kelly.taylor@bullivantmedia.com

JUST CAN'T GET THE STAFF?

Bullivantmedia GROUP LIMITED

We can offer you
GREAT LOCAL COVERAGE IN PRINT & ONLINE

Contact
Caroline or Kelly
01527 588625
01527 588749

caroline.birkenhead@bullivantmedia.com
kelly.taylor@bullivantmedia.com

Warwickshire County Council

ROAD TRAFFIC REGULATION ACT 1984

Warwickshire County Council has made the following Temporary Traffic Orders:

A426 RUGBY ROAD (COCK ROBIN ISLAND), RUGBY

Order Effect: Road closed to vehicular traffic between its junctions with Bawnmore Road/Dunchurch Road (A426), Ashlawn Road/Barby Road and Northampton Lane/Rugby Road.

Reason for Order: Carriageway patching and associated works, 09.30hrs-15.30hrs.

Order Commences: 3 September 2025 for up to 18 months.

Anticipated Completion: 3 September 2025.

Access & Diversion: West side: A426, A428, A4071, A45, Western Link (anti clockwise route only). Coventry Road, A426 and vice versa. East side: A426, A428, Ashlawn Road and vice versa.

Contractor: Balfour Beatty, Tel: 03452 415 302.

CAWSTON LANE, DUNCHURCH

Order Effect: Road closed to vehicular traffic.

Reason for Order: To safely enable overhead cabling works, 09.30hrs-15.30hrs.

Order Commences: 2 September 2025 for up to 18 months.

Anticipated Completion: 2 September 2025.

Access & Diversion: Cavston Lane, Coventry Road, Alwyn Road, Northampton Lane and vice versa.

Contractor: Sunbelt Rentals Ltd, Tel: 03700 500 792.

C127 COPSTON LANE, COPSTON MAGNA

Order Effect: Road closed to vehicular traffic from Fosse Way to Village Road North.

Reason for Order: Carriageway patching and associated works, 08.00hrs-16.00hrs.

Order Commences: 4 September 2025 for up to 18 months.

Anticipated Completion: 4 September 2025.

Access & Diversion: Copston Lane, Mere Lane, Fosse Way and vice versa.

Contractor: Balfour Beatty, Tel: 03452 415 302.

CHESTNUT FIELD, RUGBY

Order Effect: Road closed to vehicular traffic westwards from its junction with North Street.

Reason for Order: To enable works for relocation of illuminated traffic signs and electricity supply. In addition, the One-Way traffic flow from the closure point will be temporarily suspended.

Order Commences: 1 September 2025 for up to 18 months.

Anticipated Completion: 1 September 2025.

Access & Diversion: North Street, Regent Place and Chestnut Field. Access to car parks and businesses will be available via the signed diversion route.

Contractor: Balfour Beatty, Tel: 03452 415 302.

CATHIRON LANE, HARBOROUGH MAGNA

Order Effect: Road closed to vehicular traffic from the canal bridge to The Turkey Farm.

Reason for Order: To safely enable renewal of a telegraph pole.

Order Commences: 4 September 2025 for up to 18 months.

Anticipated Completion: 4 September 2025.

Access & Diversion: Cathiron Lane, Esenhall Road, Rugby Road, Main Street, Brinklow Road and vice versa.

Contractor: Core Highways, Tel: 03300 169 688.

D3190 ACACIA GROVE, RUGBY

Order Effect: Road closed to vehicular traffic from its junction with Lancaster Road.

Reason for Order: Carriageway patching and associated works, 08.00hrs-16.00hrs.

Order Commences: 4 September 2025 for up to 18 months.

Anticipated Completion: 4 September 2025.

Access & Diversion: No suitable diversion.

Contractor: Balfour Beatty, Tel: 03452 415 302.

PUBLIC FOOTPATH R154/3 IN THE PARISH OF STRETTON ON DUNSMORE

Order Effect: Footpath closed to all traffic between Grid Reference SP 40513 73022 (junction of Public Footpaths 277/R154/3 and 277/R154b/1) and SP 40804 72966 (junction of Public Footpaths 277/R154/3 and Hill Crescent).

Reason for Order: To avoid the likelihood of danger to the public because works are being carried out on or near to the footpath.

Order Commences: 1 March 2025 and was due to expire 31 August 2025. However, the Secretary of State in exercise of his powers under Section 15(5) of the Road Traffic Regulation Act 1984 has directed that the Order shall continue in force until 1 September 2026, or until works are completed, whichever is the earlier (unless the Secretary of State issues a further direction).

Anticipated Completion: 31 August 2025.

Access & Diversion: Please use an alternative route.

Contractor: Taylor Wimpy, Tel: 07863 336 999.

FOXONS BARN ROAD, BROWNSOVER, RUGBY

Order Effect: Road closed to vehicular traffic.

Reason for Order: Works to lay approximately 12m of duct.

Order Commences: 2 September 2025 for up to 18 months.

Anticipated Completion: 3 September 2025.

Access & Diversion: Foxons Barn Road, Howlands and vice versa.

Contractor: Core Highways, Tel: 03300 169 688.

Warwickshire County Council proposes to make the following Temporary Traffic Orders:

A428 HIGH STREET, RUGBY

Order Effect: Road closed to vehicular traffic from Fellows Way to Windmill Close.

Reason for Order: Structural patching and associated works, 09.30hrs-15.30hrs.

Order Commences: 19 September 2025 for up to 18 months.

Anticipated Completion: 19 September 2025.

Access & Diversion: A428, A5, A426, A4071, A428 and vice versa.

Contractor: Balfour Beatty, Tel: 03452 415 302.

PUBLIC FOOTPATH FROM GRASMERE CLOSE TO CROWTHORNS, RUGBY

Order Effect: Footpath closure to all traffic.

Reason for Order: Works to renew approximately 100m of water mains.

Order Commences: 15 September 2025 for up to 18 months.

Anticipated Completion: 24 October 2025.

Access & Diversion: Footpath from Grasmere Close To Crowthorns, Grasmere Close, Footpath from Opp No52 To Opp No110 Howlands and vice versa.

Contractor: Chevron TM, Tel: 03301 744 388.

PUBLIC BRIDLEWAY R103 IN THE PARISH OF CAWSTON, RUGBY

Order Effect: Bridleway closed to all traffic between Grid References 451097.14 E, 274948.01 N and 450663.542 E, 278467.073 N.

Reason for Order: To avoid the likelihood of danger to the public while development works relevant to Rugby Gateway are in progress.

Order Commences: 13 September 2025 for up to 6 months.

Access & Diversion: Will be appropriately signed.

Contractor: Bloor Homes Ltd neil.cartwright@bloorhomes.com, Tel: 01530 514 837.

D32160 MURRAY ROAD & D31080 MILL ROAD, RUGBY

Order Effect: Road closed to vehicular traffic from Abbey Street to Technology Drive.

Reason for Order: Carriageway patching and associated works, 0930-1530hrs.

Order Commences: 18 September 2025 for up to 18 months.

Anticipated Completion: 18 September 2025

Access & Diversion: Mill Road, Butlers Leap, Clifton Road, Murray Road and vice versa

Contractor: Balfour Beatty, Tel: 03452 415 302.

For all of the above temporary orders, pedestrian access to and egress from properties and land situated adjacent to the length of road to be closed will be maintained at all times. Vehicular access will be maintained where possible.

To report any problems with these works or for further details of our current & planned roadworks visit our website warwickshire.gov.uk/roadworksmap or call us 01926 412515.

THE WARWICKSHIRE COUNTY COUNCIL (BOROUGH OF RUGBY) (CIVIL ENFORCEMENT AREA) (WAITING RESTRICTIONS, ON STREET PARKING PLACES AND RESIDENTS' PARKING) (CONSOLIDATION) (VARIATION NO. SKC01) ORDER 2025

Warwickshire County Council has made the above-named Order, pursuant to the Road Traffic Regulation Act 1984, the effect of which will be to vary the existing Warwickshire County Council (Borough of Rugby) (Civil Enforcement Area) (Waiting Restrictions, On Street Parking Places & Residents' Parking) (Consolidation) Order 2017 (as varied) as described in the Schedule below. The Order will commence on 1st September 2025.

A copy of the Order, together with a copy of the Order to be varied, and a statement of the Council's reasons for proposing to make the Order, are available to view at Shire Hall, Market Place, Warwick, and online on the Council's website at: https://www.warwickshire.gov.uk/news/20208/rugby-borough

Any person who desires to question the validity of the Order or of any provision contained in it on the grounds that it is not within the power conferred by the Road Traffic Regulation Act 1984, or on the grounds that any requirement of that Act or of any instrument made under it has not been complied with in relation to the Order may within six weeks from the date of the making of the Order apply to the High Court for this purpose.

SCHEDULE NO STOPPING ON SCHOOL KEEP CLEAR MARKINGS. MON-FRI 8AM TO 5PM

Table with 2 columns: School Name and Marking Location(s). Lists various schools and their respective road closure details.

S Duxbury, Director of Strategy, Planning & Governance, Shire Hall, Warwick CV34 4RL Date 29 August 2025

Classified

PUBLIC NOTICES

PUBLIC NOTICES

Goods Vehicle Operator's Licence

Sarn Mouldings of Newpark Industrial Estate, Greystone Road, Antrim, Northern Ireland BT41 2RU is applying for a licence to use Torrington Avenue, Coventry, CV4 9HP as an operating centre for 10 goods vehicles and 20 trailers.

Owners or occupiers of land (including buildings) near the operating centre(s) who believe that their use or enjoyment of that land would be affected, should make written representations to the Traffic Commissioner at Quarry House, Quarry Hill, Leeds, LS2 7UE, stating their reasons, within 21 days of this notice.

PUBLIC NOTICES

Rugby Borough Council Town and Country Planning Act 1990 (as amended)

Application Number R25/0622 OLD ORCHARDS, POST OFFICE ROAD, LEAMINGTON HASTINGS, RUGBY, CV23 8DZ

Erection of self-contained ancillary annex building. This development may affect a Conservation Area

Application Number R25/0708 THURLASTON MEADOWS CARE HOME, MAIN STREET, THURLASTON, RUGBY, CV23 9JS

Retrospective greenhouse and gazebo including paving. This development may affect a Conservation Area

Members of the public may inspect copies of the application, the plans and documents submitted with it online at: www.planningportal.rugby.gov.uk or in an electronic form at: Town Hall, Evreux Way, Rugby, CV21 2RR between the hours of 9.00 am and 5.00 pm Monday to Friday until 19 September 2025.

Please note a planning officer would not be present. If you wish to make an appointment to discuss the application, please contact the case officer.

Any person who wishes to make representation to the above mentioned Council about the applications should make them online - www.planningportal.rugby.gov.uk (search for application number and select comment) - or in writing by that date to Chief Officer - Growth and Investment, Town Hall, Rugby, CV21 2RR.

If an application is determined by the Planning Committee, members of the public may have the opportunity to speak at the meeting. More details about public speaking are available from the Council or on-line at: www.rugby.gov.uk/speakingatplanning

For household or minor commercial applications, in the event of an appeal against a refusal of planning permission, dealt with on the basis of representations in writing, any representations made will be sent to the Secretary of State, and there will be no further opportunity to comment at the appeal stage.

Nicola Smith Chief Officer - Growth and Investment MRTPI

Goods Vehicle Operator's Licence

Bradley Pointon trading as Pointons site services LTD of Bakersfield farm, Hollyberry End, Meriden CV7 7HP is applying for a licence to use Eastland Fields Farm, Marston Lane, Marston Jabbett, Bedworth, CV12 9SD as an operating centre for 4 goods vehicles and 2 trailers

Owners or occupiers of land (including buildings) near the operating centre(s) who believe that their use or enjoyment of that land would be affected, should make written representations to the Traffic Commissioner at Quarry House, Quarry Hill, Leeds, LS2 7UE, stating their reasons, within 21 days of this notice.

Representors must at the same time send a copy of their representations to the applicant at the address given at the top of this notice. A Guide to Making Representations is available from the Traffic Commissioner's office.

PUBLIC NOTICES

NOTICE OF APPLICATION FOR A NEW PREMISES LICENCE UNDER THE LICENSING ACT 2003

Name of (applicant): DC London Pie Ltd Notice is hereby given that DC London Pie Ltd has applied to Coventry City Council for a VARIATION PREMISES LICENCE for Pizza Hut Restaurant, Vanguard Avenue, Coventry, CV5 6UA

Details of Application: To provide Late Night Refreshments Monday 23:00 - 03:00; Tuesday 23:00 - 03:00; Wednesday 23:00 - 03:00; Thursday 23:00 - 03:00; Friday 23:00 - 03:00; Saturday 23:00 - 03:00; Sunday 23:00 - 03:00.

Any person wishing to lodge a representation concerning this application may write to: Licensing Authority, The Council House, Earl Street Coventry CV1 5RR

Or send an email to: licensing@coventry.gov.uk. The application may be viewed during normal office hours at the above address and further information may be available at www.coventry.gov.uk on the public register.

Any Representation relating to this application must be made in writing to the Licensing Authority by 23rd September 2025.

Please note it is an offence to knowingly or recklessly to make a false statement in connection with an application. The maximum fine on summary conviction for this offence is Unlimited.

PUBLIC NOTICES

Warwickshire County Council

ROAD TRAFFIC REGULATION ACT 1984

Warwickshire County Council has made the following Temporary Traffic Orders:

SCHOOL LANE, PRIORS MARSTON

Order Effect: Road closed to vehicular traffic.

Reason for Order: To enable new gas connection works.

Order Commences: 1 September 2025 for up to 18 months

Anticipated Completion: 5 September 2025

Access & Diversion: School Lane, Holly Bush Lane, Hellidon Road, The Green, The Holloway and vice versa.

Contractor: Cadent Gas, Tel: 08000 111 999.

For all of the above temporary orders, pedestrian access to and egress from properties and land situated adjacent to the length of road to be closed will be maintained at all times. Vehicular access will be maintained where possible.

To report any problems with these works or for further details of our current & planned roadworks visit our website warwickshire.gov.uk/roadworksmap or call us 01926 412515.

S Duxbury, Director of Strategy, Planning & Governance, Shire Hall, Warwick CV34 4RL Date 29 August 2025

PUBLIC NOTICES

Warwickshire County Council

ROAD TRAFFIC REGULATION ACT 1984

Warwickshire County Council proposes to make the following Temporary Traffic Orders:

HIGHFIELD LANE, CORLEY

Order Effect: Road closed to vehicular traffic.

Reason for Order: Works to replace existing pole, closed 09.00hrs-15.00hrs.

Order Commences: 15 September 2025 for up to 18 months.

Anticipated Completion: 15 September 2025.

Access & Diversion: Highfield Lane, Bennetts Road North, Bennetts Road, Bennetts Road South, Keresley Green Road, Keresley Road, Tamworth Road, Tamworth Road Service Road, Hollyfast Lane, Rock Lane and vice versa.

Contractor: M J Quinn, Tel: 01543 547 118.

For all of the above temporary orders, pedestrian access to and egress from properties and land situated adjacent to the length of road to be closed will be maintained at all times. Vehicular access will be maintained where possible.

To report any problems with these works or for further details of our current & planned roadworks visit our website warwickshire.gov.uk/roadworksmap or call us 01926 412515.

S Duxbury, Director of Strategy, Planning & Governance, Shire Hall, Warwick CV34 4RL Date 29 August 2025

Classified

TELEPHONE 01527 588688 FACSIMILE 01527 584371

PUBLIC NOTICES

PUBLIC NOTICES

RICHARD DAVID CLARK (otherwise Richard Clark) (Deceased)
Pursuant to the Trustee Act 1925 any persons having a claim against or an interest in the Estate of the above named late of 82 St Andrews Crescent, Rugby, Warwickshire, CV22 5PH, who died on 24/11/2024, are required to send written particulars thereof to the undersigned on or before 30/10/2025, after which date the Estate will be distributed having regard only to the claims and interests of which they have had notice.
Breithertons LLP, Mortgage House, 2 Clifton Road, Rugby, Warwickshire CV21 3PX. (Ref:LAG235880.1)



ANNOUNCEMENTS

DEATHS

Rev Canon JOHN RANDALL

Died peacefully on Tuesday 5th August 2025.

Aged 96 years.

A devoted husband to Anne (d. 1974) and Anne.

Much loved father to Stephen, Matthew and Richard, and proud grandfather.

John's funeral service will be held at St Mark's Church, Bilton at 2pm on Friday 5th September, followed by committal at Rainsbrook Crematorium at 3pm. Family flowers only.

Donations if desired can be made to Myton Hospice.

Wif Smith and Son Funeral Services, 25 Main Street, Bilton, Rugby, CV22 7NQ
Tel: 01788 814157

SALES & WANTS

MISCELLANEOUS

RECLINER CHAIR electric rise & recline £169 Manual recline chair £60 High seated chair £40 Can deliver 07703 925662

BEDS NEW Doubles £95 Singles £59 King size £159. Second hand doubles £49 Singles £29 Fridges £49 Freezers £59 Can deliver 07703 925662

SECTION 4 wooden holder holds 40 CD's on each side good condition £10 07927441428

EX Car Boot display unit portable slot together very cheap VGC £10 07882114212

FIVE MINTON BELLEMEADE SALAD PLATES (8") blue flowers, bone china, used but in very good clean condition. £8.00 for all. Tel: 07934132759

MISCELLANEOUS

WATER lily plants, beautiful large white flowers suitable for a natural pond or a water feature. Just £5.00 per large clump raising funds for Hillside Shire Horse Sanctuary. Tel: 07786853219

CARPENTERS Bench Vice £25. Tel: 0121 744 4633

CARAVAN / Trailer wheel clamp (Milenco) £30. Tel: 0121 744 4633

CARAVAN / Trailer Hitch Lock £20. Tel: 0121 744 4633

CHAIR Black gas lift desk chair good condition / instructions height 77.5 - 89.5 £10 01527 524412

DINNER set including plates, bowls, teapot, mugs, cups & saucers 'Sunny Days' VGC. £30 01527 524412

MISCELLANEOUS

SLEEPING bags Coleman Xylo pair of with hoods & colestherm insulation unused £45 01527 524412

CAMPING mats pair of Gelert single self inflating mats used once £20 01527 524412

GILET LunaRider Reflective wear child's gilet size 8-10 new with tags. £10 01527 524412

WANTED

****WANTED: Vinyl Records CDs Cassettes**
Vintage or New **
Seeking classic rock, jazz, indie and rare finds. Cash paid
Call or text: 07765 142354 Or 01527 893992
Or email: welston@live.com
Paul (Albatross & Doomed Records)

MISCELLANEOUS

GENERATOR 240 / 12 volts boxed 20 hours use only £150 07837056866

MOUNTAIN Bike £40 folding mountain bike £80 07837056866

OREGON chainsaw sharpening tool £15 0121 445 2907

UNUSED continental tyre size 185 / 60 R14 2 used tyres size 185 / 60 R14 newly full tread FREE TO COLLECTOR 0121 408 7657

SERVICES

CONSERVATORIES & GLAZING

DOUBLE GLAZING REPAIRS
Locks, Hinges, Handles, Glass, Windows or Doors
New Doors/Windows
Also Supplied/Fitted
07973 200 623

GARDENING SERVICES

STUART'S GARDENING SERVICES
Landscaping & Tree Surgery
Fencing, Slabbing, Turfing, Block Paving, Bases, Mowing, Decking, Roofing and Guttering.
Mini-digger/Dumper
Fully Insured. Registered carrier of waste.
FREE ESTIMATES
02476 305992 • 07813 790889
01788 211064
www.stuarts-gardening-services.yolasite.com

HOME IMPROVEMENTS

HANDY MAN

If you're looking for a fast and reliable service

Then call Lenny

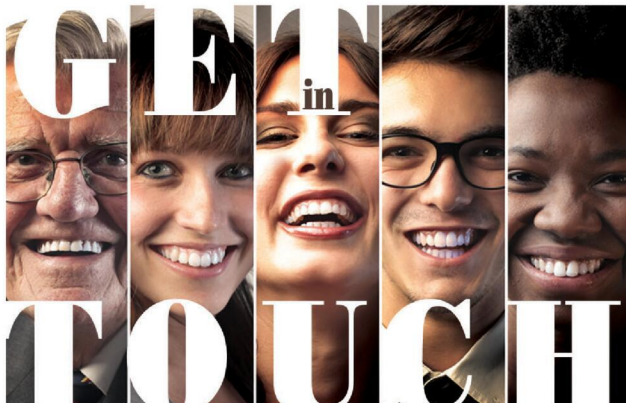
- Plastering • Plumbing • Fencing
- Gardening • Flooring • Kitchens
- Bathrooms • Carpentry • Flat pack furniture
- Tiling • Painting

02476 443 996
07794 784 266

NO VAT CHARGE

KITCHENS

S.W INSTALLATIONS
Kitchens & Bathrooms
FREE DESIGN & QUOTATION
QUALITY KITCHENS & BATHROOMS SUPPLIED & FITTED
PLUMBING, CARPENTRY, TILING, WORKTOP & DOOR REPLACEMENT
(Supply & fit, supply only or fit only)
LOCAL TRADESMAN
20YRS EXPERIENCE
NO JOB TOO SMALL
01926 773386 or 07971 684 353

We love hearing from you!

TO SUBMIT A FREE ADVERT PLEASE EMAIL
freeads@bullivantmedia.com

Coventry Observer

Website: www.CoventryObserver.co.uk

Twitter: www.twitter.com/coventryobserver

NEWSDESK
01527 588657

Editor: Tristan Harris editor@coventryobserver.co.uk

Observer

Website: www.LeamingtonObserver.co.uk

Twitter: www.twitter.com/leamobs

NEWSDESK
01527 453737

Editor: editor@leamingtonobserver.co.uk

Observer

Website: www.RugbyObserver.co.uk

Twitter: www.twitter.com/RugbyObserver

NEWSDESK
01527 453737

Editor: editor@rugbyobserver.co.uk

Online Newspaper: www.CoventryObserver.co.uk/editions

Instagram: www.instagram.com/coventryobserver

ADVERTISING
01926 317111

National & Agency Mediators - 0207 832 1649
Email: adverts@coventryobserver.co.uk

Facebook: www.facebook.com/CovObserver

SPORTSDESK
01527 588659

Sport: sport@coventryobserver.co.uk

Online Newspaper: www.LeamingtonObserver.co.uk/editions

ADVERTISING
01926 317140

National & Agency Mediators - 0207 832 1649
Email: adverts@leamingtonobserver.co.uk

Facebook: www.facebook.com/leamington.observer/

SPORTSDESK
01527 588659

Sport: sport@leamingtonobserver.co.uk

Online Newspaper: www.RugbyObserver.co.uk/editions

ADVERTISING
01527 453743

National & Agency Mediators - 0207 832 1649
Email: adverts@rugbyobserver.co.uk

Facebook: www.facebook.com/rugby.observer

SPORTSDESK
01527 588659

Sport: sport@rugbyobserver.co.uk

CRS LTD
 Spring Lane South, Malvern WR14 1AT
 ATF's are the **ONLY** legal way to scrap your vehicles
BUYERS
 of all SCRAP Metals and SCRAP Vehicles
 The **ONLY** authorised treatment facility in Malvern!
 Best Prices Paid • Collection & Skip Drops Farm
 Equipment, Copper, Brass etc. • 50 Ton Weigh Bridge
ID REQUIRED - 01684 578081
 www.crs-malvern.co.uk

Observer SPORT



9 772040 128006
 Published by Bullivant Media Group Ltd, Webb House,
 Church Green East, Redditch, Worcestershire, B96 8BP
 Printed by Newsquest, Newspaper House, Osney
 Mead, Oxford, Oxfordshire, OX2 0EJ

VINYL RECORDS WANTED
 Buying since 1978
 Get your cash TODAY!
 I will come to you
Phone PAUL
01527 893992 | 07765 142354

www.rugbyobserver.co.uk BRINGING YOU ALL THE LATEST SPORTS NEWS AND VIEWS FROM THE AREA

Last gasp derby win for Borough

FOOTBALL: RUGBY Borough responded to defeat on their FA Trophy debut with victory against local rivals Racing Club Warwick.

Borough twice came from behind to triumph at the death against neighbours Warwick at Townsend Meadow.

An injury-time goal from substitute Cam Collins snatched the points for Borough after Tendai Daire and Leo Stone had both restored parity.

The result means Rugby sit fourth in the Northern Premier League Midlands table.

Warwick broke the deadlock after just two minutes when Aaron Opoku finished at the second attempt as Ellis Myles' last-ditch tackle proved in vain.

However, Borough drew level two

minutes later as Rich Black's long ball sent Daire through and the striker coolly finished past Racers goalkeeper Sam Lomax.

The home side reclaimed the lead on the stroke of half time when Kyle Barnett finished from close range at the back post after Borough failed to deal with a long ball into the box.

Rugby hit back for a second time on 59 minutes as Stone worked a yard of space for a shot in the box and curled a low effort into the bottom right corner.

And the Racers then had Jack Edwards sent off on 79 minutes for a lunging challenge on Bryan Kohyrelon.

Borough made the most of the man advantage two minutes into injury time as Collins finished Myles' low ball in from the right from close range to snatch the points.

That came after Borough's debut in the FA Trophy ended in a 3-2 defeat against Sutton Coldfield Town at the preliminary round stage.

Early goals from Sam Smith and Reece Gibson put the home side into an early two-goal lead.

However, Bradley Stretton halved the deficit for Rugby just before the break after he beat two defenders and found the bottom corner.

Sutton restored their two-goal lead early in the second period as Sean Devlin curled a shot past Borough goalkeeper Brandon Ganley.

Borough struck again five minutes from time when Stone played a one-two with Burgess on the edge of the penalty area and fired in off the post.

Rugby are next in action against Wellingborough Town on Saturday, September 6 with kick-off at 3pm at Kilsby Lane.

Valley enter drop zone after Dynamo and Anstey losses



RUGBY Town sit one place off the bottom of the table after suffering back-to-back defeats over the bank holiday weekend.

Valley suffered a narrow 1-0 defeat against Shepshed Dynamo at Butlin Road as Jesse Friend's first-half penalty proved decisive.

That came after Rugby surrendered the lead in a 3-1 defeat against Anstey Nomads

at Cropston Road after Sam Tye opened the scoring.

The results mean Valley sit 21st in the Northern Premier League Midlands table, one point above bottom side Bedworth United.

In a game of few chances, Shepshed won a penalty on 24 minutes when Ethan Hanson tripped Callum Burkey in the box.

And the visitors duly took the lead from the resulting spot kick as Friend sent Marcus Bald the wrong way from 12-yards out.

Valley have now lost three games in succession.

Rugby are next in action against Belper Town on Saturday, August 30 with kick-off at 3pm at the Raygar Stadium.

Rugby goalkeeper Marcus Bald gathers a high cross. Picture by Martin Pulley.

CASHBROKERS

LEAMINGTON SPA

PAWNBROKING LOANS
 SCRAP GOLD & SILVER
 BUY BACK
 JEWELLERY & WATCHES
 COINS & BULLION

CASH PAID
FOR GOLD, SILVER,
COINS & BULLION



01926 258252

144 Parade, Leamington Spa, CV32 4AG

www.cashbrokersleamingtonspa.co.uk

