

**WANTED**  
**Motorcycles and Scooters**  
 Any cc, condition or age,  
 good prices paid  
 07944 781 933 | 01926 257 643

# Ella scales the heights in Snowdon challenge

by **Andy Morris**  
 andy.morris@bullivantmedia.com

**A PLUCKY 10-year-old from Long Lawford who was born with Down syndrome has led a team of volunteers up one of the UK's highest mountains to help other youngsters who have the condition.**

Despite horrendous weather conditions which caused some participants to abandon the challenge, Ella Hands kept to her word and led 15 volunteers on a Snowdon climb - raising £3,200 in the process.

The money will go towards a fundraising campaign, spearheaded by Ella's parents Dave and Rachel, to help secondary school children with Down syndrome to receive the best possible education.

Ella led the team of staff from logistics company LTS Global Solutions alongside her brother Connor and their parents, both of whom work for the company.

The family wanted to help make a difference in classrooms across the UK for secondary school pupils with Down syndrome.

The funds will go towards Dave and Rachel's campaign in partnership with charity Down Syndrome UK to raise \$40,000 for the development of a Secondary Education



Rachel, Ella, Conor and Dave Hands at the beginning of their Snowdon adventure.

Programme, to give schools all the resources and expertise needed to help students with Down syndrome to thrive in the classroom.

It followed the couple's own experience when choosing a secondary

school for Ella.

Having watched Ella thrive in her early years at school, the couple expected to find a secondary school with a similar offering - but found the level of experience and exper-

tise at secondary level was not of the same standard. Dave said: "Snowdon was tough, but Ella was her usual trouper self.

"Our supporters have been great too, and this will help towards our

Dave and Ella march on despite the terrible weather.



fundraising total of \$40,000 so we can launch this programme in classrooms across the country in the coming year."

The money will go towards equipping all schools with training, resources and ongoing support in subjects such as numeracy, literacy, communication and social interaction, to ensure all teaching staff have the right skills to work with students with Down syndrome.

Visit <https://tinyurl.com/msrcmfxd> for more information or to donate to the programme.



Tel: 0800 3032559  
 Mob: 07773 911552  
[www.drives4u.co.uk](http://www.drives4u.co.uk)

**Are you looking to improve or enlarge your driveway or patio?**

We can provide you with a beautiful new patio or driveway in Coventry, Bromsgrove, Redditch, Solihull, Leamington, Kidderminster and Birmingham

**5 Year guarantee**

- We've designed and built just about every shape and size of driveway and patio you can imagine, so we will not be phased by your project.
- We strive to achieve 100% satisfaction and unlike other driveway companies, with us you pay absolutely nothing upfront.
- Give us a call and you could save upto £1000



**Tel: 0800 3032559 | Mob: 07773 911552 | [www.drives4u.co.uk](http://www.drives4u.co.uk)**

**Championing the needs of Rugby residents since 1991 and delivering the news to you every week**



**LEFT:** Sue Kirk, Barbara Mayor, Neil Sandison, Rosalind Stoddart and Maggie O'Rourke at the Woven from the Field exhibition.

**RIGHT:** Younger visitors took part in a series of free craft sessions.



Visitors took in the gallery's Woven from the Field exhibition.

# Coming together to help the planet

**SUSTAINABLE Saturday returned to Rugby Art Gallery and Museum last weekend, offering a free day of creativity for the climate-conscious community.**

Textile artist Allan Brown, who spent seven years weaving a dress from foraged stinging nettles following the death of his wife, demonstrated nettle spinning and hosted a free screening of documentary *The Nettle Dress*, which followed his labour of love.

Visitors met the alpacas from Alpaca Pals and spoke to representatives from Garden Organic, Rugby Eco Hub and Rugby Wildlife, joined by artist Sue Ainley.

Local artists who embrace sustainability hosted a mini-makers market where visi-

tors bought environmentally-conscious crafts, while artist Zoe Burt hosted botanical ink drop-in workshops.

The Rugby Youth Board curated a line-up of local live music, with acts performing outside the Little Elborow Street venue's entrance.

Younger visitors took part in a series of free craft sessions, including the traditional Japanese art form of tatakizome – or flower hammering – to create colourful, botanical prints.

And artists Sue Kirk and Rosalind Stoddart host a 'meet and greet' session in the art gallery to discuss the current *Woven from the Field* exhibition of organic willow weaving and textiles created from alpaca fleece.





**COACH TOUR | 5 DAYS TO SCOTLAND | £355**

**LOCH ACHRAY HOTEL** TripAdvisor 4.5/5  
LOCH LOMOND NATIONAL PARK

**WEDNESDAY 15<sup>TH</sup> OCTOBER**

**AUTUMN BREAK TOUR INCLUDES:**

- 4 nights half board
- Excursions
- Nightly entertainment
- Luxury coach travel

**PICK UP FROM:** Stratford-Upon-Avon, Warwick, Leamington Spa, Kenilworth, Coventry, Bedworth, Nuneaton

**LOCHS.COM 01389 713713** 

**Just Go!** Holidays For more information, or to book, please call **03332 342 514** Quote **OSG**

★★★★★ Trustpilot *Reader Travel*



**SPRIT OF CHRISTMAS SHOW & BLACKPOOL ILLUMINATIONS**

Departing Tue 2 Dec '25

Get ready for a festive experience like no other in Blackpool at Viva Blackpool! Enjoy a lively lunchtime show featuring cabaret, dancing, Bingo, a two-course lunch and a magical drive through the famous Blackpool Illuminations.

**Your break includes**

- ✓ Return coach travel **from Rugby**
- ✓ 2 nights at the Bluewaters Hotel, Blackpool (JG2 rating) with dinner & breakfast
- ✓ Admission to the Spirit of Christmas lunchtime show at Viva Blackpool
- ✓ Blackpool Illuminations evening drive

**3 Days by Coach only £199**  
Single Supplement £50

These packages are subject to Just Go! Holidays terms & conditions. Coach bookings are protected by Bonded Coach Holidays & the Association of Bonded Travel Organisers Trust Ltd. All holidays are ATOL protected No.10889. Prices are per person based on two people sharing a room & homed on or bookings made up to 7 days prior publication, after which prices may fluctuate. Choices of date, hotel, airport or pick-up location may incur a supplement. Please see website or call for full details.

Visit us online at [justgoholidays.com/OSG](http://justgoholidays.com/OSG)

OSG numbers are free within inclusive minutes packages otherwise standard rates apply.



**FOLKESTONE & CANTERBURY TURKEY & TINSEL**

Departing Mon 1 Dec '25

It's time to Jingle All the Way to Folkestone and enjoy some pre-Christmas festivities at our fabulous hotel! With plenty of delicious Christmas food, a 2 for 1 bar offer and entertainment throughout our stay - we can be certain of a fantastic five days away!

**Your break includes**

- ✓ Return coach travel **from Rugby, Coventry**
  - ✓ 4 nights at the Grand Burstin Hotel, Folkestone (JG2 rating) with dinner & breakfast (includes traditional 'Christmas' dinner)
  - ✓ **2 for 1 bar** (6pm-9pm) on selected drinks
  - ✓ After-dinner tea and coffee
  - ✓ Light entertainment every evening
  - ✓ Excursions to Canterbury & Rochester
- Optional excursion to Sandwich (£11pp)**

**5 Days by Coach only £259**  
Single Supplement £80

These packages are subject to Just Go! Holidays terms & conditions. Coach bookings are protected by Bonded Coach Holidays & the Association of Bonded Travel Organisers Trust Ltd. All holidays are ATOL protected No.10889. Prices are per person based on two people sharing a room & homed on or bookings made up to 7 days prior publication, after which prices may fluctuate. Choices of date, hotel, airport or pick-up location may incur a supplement. Please see website or call for full details.

Visit us online at [justgoholidays.com/OSG](http://justgoholidays.com/OSG)

OSG numbers are free within inclusive minutes packages otherwise standard rates apply.

## PUBLIC NOTICES

For all your latest information on Planning Proposals, Traffic Notices, Goods Vehicle Operator Licences, Licences To Sell Alcohol and Probate Notices...

See page **29**




# MP praises diversity in town's first faith forum

FAITH leaders in Rugby came together at an inaugural Faith Forum convened by the town's MP.

John Slinger brought together a dozen faith leaders representing a variety of faiths from across the constituency to strengthen relations between different faith groups.

Participants highlighted the work taking place in Rugby to strengthen community cohesion and build inter-faith understanding.

The annual Peace Walk was also commended, and Mr Slinger noted the recent Many Paths, One World event held at the Benn Partnership Centre which celebrated Rugby's diverse spiritual and cultural heritage.

The group discussed the need to bring people together across faiths and communities, how loneliness affects residents, and the impact of social media on young people.

The forum agreed that a future meeting would be



John Slinger MP with local faith leaders.

beneficial and that the group would focus on practical steps that could be taken to strengthen community cohesion.

Mr Slinger said: "It is important for me to hear local faith leaders' voices loud and clear and to help stimulate meaningful dialogue

at the local and national level.

"Whether people are religious or not, Rugby's strength lies in its diversity and the fact that we are a constituency at ease with itself.

Different faith groups and ethnicities coexist peacefully, get on with one another,

and engage with each other. However, we must never be complacent. The purpose of this forum is to explore ways to strengthen the bonds between us, facilitate communication, deepen understanding, and share our challenges and opportunities – not only in matters of faith but across

the wider community. I hope this inaugural meeting will lead to further engagement with others who care deeply about these issues.

"This was just the first meeting, and I will invite more people to the next, most likely including young people."

# Park allotments scheme set for council backing

by Andy Morris  
andy.morris@bullivantmedia.com

**PLANS to create community allotments at Newbold's Centenary Park look set to go ahead.**

The allotments formed part of the masterplan for the Green Flag Award-winning park when it was drawn up by Rugby Borough Council a decade ago following consultations with residents and community organisations.

Preliminary work at the proposed allotment site off Parkfield Road has already taken place, with landscape architects Kova Landscape drawing up plans for 29 allotment plots, complete with vehicular access and parking.

And at a recent meeting, the council's cabinet approved £105,000 funding from Section 106 contributions – funding from developers for infrastructure – to pave the way for construction work to start on site.

The cabinet also supported plans for the council to work with the National Allotment Society and community organisations in Newbold to form a community allotment



Coun Maggie O'Rourke, Rugby Borough Council portfolio holder for partnerships and wellbeing.

association to manage the site.

Independent community allotment associations currently run all nine of the council-owned allotment sites in the borough.

Coun Maggie O'Rourke, Rugby Borough Council's spokesperson for partnerships and wellbeing, said: "This funding marks a major investment in allotment provision in the borough and looks set to complete the

Centenary Park masterplan a decade after it was drawn up by the council, working in partnership with the Newbold community.

"It's a partnership which has an important part to play moving forward with the project, as we look to form an allotment association in Newbold to manage the site once it's completed."

The masterplan for Centenary Park was drawn up after 37,000 square metres of land was returned to the council following the construction of the town's Western Relief Road.

The park has won the prestigious Green Flag Award ten years on the trot.

Coun Neil Sandison, the council's Liberal Democrat group spokesperson for partnerships and wellbeing, said: "Allotments in Rugby are much sought after to assist families with the cost of living and also provide important wildlife habitats.

"Centenary Park is a step in the right direction for those who want to grow their own fruit, flowers and vegetables."

The plans were due to be voted on by the full council after the Observer went to press.

News and sport online: [www.rugbyobserver.co.uk](http://www.rugbyobserver.co.uk)



Kenilworth Tennis Squash & Croquet Club



Crackley Lane,  
Kenilworth CV8 2JS  
01926 852673

**Open 7 days a week**  
Beginners courses – Coaching  
Social play – Mix ins  
Competitions – Juniors  
Club nights – Social events

**Affordable plans!**

- Pay monthly
- Pay annually
- Pay and play!



Family Oriented  
All Welcome  
Ample free parking

Make lasting friendships  
and memories!



**JOIN US!**

- Tennis
- Padel
- Squash
- Croquet
- Cafe/Bar

[www.ktscc.co.uk](http://www.ktscc.co.uk)

[membership@ktscc.co.uk](mailto:membership@ktscc.co.uk)

# Chelsie honoured with civic award

**THE Mayor of Rugby has presented the Freedom of the Borough to double Olympian Chelsie Giles.**

by **Andy Morris**  
andy.morris@bullivantmedia.com

The 28-year-old judo star, who took the bronze medal at the 2020 Tokyo Olympics in the -52kg class, visited the Mayor's Parlour at the Town Hall to receive the honour from Coun Barbara Brown.

Chelsie was one of three Olympians to be awarded the Freedom of the Borough by the council following the Paris Olympics in 2024.

Rower Lauren Henry, who struck gold in the women's quadruple sculls, and paddler Kimberley Woods, who won a brace of bronze medals after finishing third in both the women's kayak single (K1) and kayak cross finals, were presented with the borough's highest civic honour in March during a ceremony at the Benn Hall.

But Chelsie missed the ceremony due to training commitments in Japan, so was invited to the Mayor's Parlour earlier this month to receive the Freedom of the Borough.

The Wolston-based judoka was a budding gymnast, swimmer and dancer growing up, stumbling on judo by chance.

Chelsie regularly watched her brother's judo training and, one day, was invited by a coach to give the martial art a go.

Her natural talent led her to rise swiftly through the judo ranks, earning Team GB's first medal of the Tokyo Games.

In 2022, Chelsie became world number one, took silver at the World Championships and was crowned European champion. But

despite heading to the Paris Olympic Games in great form, Chelsie lost on golden score in her opening bout, with her Brazilian opponent, Larissa Pimenta, going on to take the bronze medal.

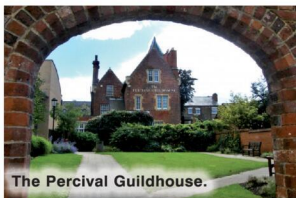
Coun Brown said: "Chelsie has reached the pinnacle of her sport and represented Team GB at the Olympic Games in Tokyo and Paris, an outstanding achievement which deserves to be rewarded with the Freedom of the Borough, the highest civic honour the council can award.

"Just like Lauren and Kimberley, Chelsie's dedication and drive to succeed should inspire the next generation to aim for the top and dream big."

Following the Paris Olympics, the council also voted in favour of awarding all future Rugby medallists at the Olympics and Paralympics the Freedom of the Borough.



Double Olympian Chelsie Giles (centre) visited the Mayor's Parlour to receive the Freedom of the Borough from (left) Dan Green, Rugby Borough Council's acting chief executive, and Mayor Barbara Brown.



## Guildhouse to host sessions from reflexology to history

A WEALTH of workshops is on offer at Rugby's home of lifelong learning on Saturdays throughout September, October and November.

The Percival Guildhouse will run workshops in reflexology, stress-busting, learning to use

sewing machines, embroidery and stitch art, and classical ballet on September 27.

October 11 brings another stress-busting workshop, as well as sessions on making air dry clay ornaments, photography, and an illustrated journey

through the world's great mountain ranges via Friends in High Places.

On November 8, the St Matthews Street venue hosts workshops on reflexology, weight management, floral painting in acrylics, life draw-

ing, needlefelting for crafters, and history sessions on Chatsworth and the Cavendish Family, and the Hidden World of Canal Heritage.

Visit [www.percival-guildhouse.co.uk](http://www.percival-guildhouse.co.uk) or call 01788 542467 for more information.



## The Railway Touring Company





Saturday 7, 21, 28 February 2026

Steam over the Northern Fells.

The Winter Cumbrian Mountain Express provides a wonderful opportunity to get out and about during the winter months, with the added bonus of steam haulage over the Northern Fells, including the spectacular Settle & Carlisle Railway.

We have a high speed journey down the West Coast Main Line to Carnforth, hauled by a blue Class 86 electric locomotive. We then enjoy a circular steam tour outwards via Shap to Carlisle and back via the Settle and Carlisle line.

We return from Preston to London behind our blue electric locomotive.

The Winter Cumbrian Mountain Express

MAGNIFICENT LOCOMOTIVES • SCENIC JOURNEYS • FASCINATING DESTINATIONS

For more information please visit [railwaytouring.net](http://railwaytouring.net) or phone **01553 661 500**





Refreshments available to purchase on board. Tables for two can be guaranteed in Premier/First for a supplement of £45 per person subject to availability. Prices start from £115 per person. Junior and family fares available. Booking subject to availability. The Railway Touring Company's standard conditions of booking and travel apply – see website for details. Images are for illustration purposes only – locos/trains may differ.

# Three arrested in crackdown on knife crime

**A SPECIALIST police taskforce which tackles knife crime and youth violence in Coventry arrested three people during patrols earlier this month.**

Project Guardian taskforce officers stopped a vehicle in Chapel Street and found a hammer, crowbars, and stolen items found to be from a burglary in August.

A 26-year-old woman and a 28-year-old man were arrested for a variety of offences.

In Riley Square, officers located a vehicle and after

by **Andy Morris**  
andy.morris  
@bullivantmedia.com

further checks discovered 38 wraps of Class A drugs, a suspected bag of heroin, nitrous oxide canisters and a machete.

One man was arrested on suspicion of possession of a bladed article, possession with intent to supply Class A and obstructing police.

Insp Colin Gallier, from the Guardian Taskforce, said:

"Our teams work incredibly hard to take knives and

offensive weapons off the streets – and I want to thank our officers who've dedicated over 1,000 hours of patrolling in August to help keep Coventry safe.

"Every knife seized is a life saved. Through a mix of plain-clothes operations and high-visibility patrols, we're working tirelessly to protect our communities.

"Alongside enforcement, my officers also invest time in educating young people about the devastating impact of knife crime and serious youth violence. We remain



Officers from Coventry Police's Project Guardian taskforce.

committed to taking action against anyone who chooses to carry a knife.

"Please don't carry knives – and if you suspect drug

dealing or gang activity in your area, report it. Your information helps us target our patrols and take action against those who pose a

threat to others." Report suspicious activity by calling 101, or contact Crimestoppers on 0800 555 111 to stay anonymous.



**Dangerous driver Leslie Cooke has been jailed for 10 months.**

## Mini crashed near to The Italian Job location

A DANGEROUS driver has been jailed after he crashed a Mini in Coventry – near the site of an iconic scene from The Italian Job.

Coventry man Leslie Cooke, 60, has been jailed for 10 months for dangerous driving. He was also banned from driving.

Police said Cooke was spotted driving a Mini at high speed in and around Stoke Aldermoor in August this year.

Dogs unit Sgt John Simpson pursued the car before it was hit by a stinger used by Sgt Dale Hughes from the city's ANPR unit.

Cooke abandoned the car and was caught by Sgt Simpson and PD Ugo, just a short distance from where the iconic Mini tunnel scene from the 1969 film The Italian Job was filmed.

Cooke was arrested and charged with dangerous driving and failing

to stop, pleading guilty at court last month.

A West Midlands Police spokesperson said: "The leading causes of serious injury and death on UK roads are speeding, drink and drug driving, not wearing a seat belt and using a mobile phone while driving.

"We are committed to making our roads safer and are taking regular action against dangerous driving, as well as vehicle crime."

**ANTIQUE & VINTAGE FAIR**  
**SUNDAY 28TH SEPTEMBER**  
 UP TO 100 STALLS **ENTRY 9AM - 2PM**  
 Sky Blue Sports Connexion Ryton on Dunsmore CV8 3FL  
 Free parking & café - Entry £3, under 16's FREE  
 Dogs are welcome  
 Contact 07939 445024 [www.gjffairs.co.uk](http://www.gjffairs.co.uk)



**Would you accept an organ if you needed one?**

Someone will die today waiting for an organ transplant.

**Confirm your decision on the NHS Organ Donor Register.**



Scan the QR code or visit [organdonation.nhs.uk](http://organdonation.nhs.uk)



# Lexus donation is a knockout for Lewis

**A PROFESSIONAL boxer is speeding towards his fundraising target to pay back the Myton Hospices for caring for his dad.**

Lewis Williams, a Myton Volunteer Ambassador, whose dad was cared for by the Myton at Home team in 2024, has pledged to raise £1million over the course of his career.

His first campaign, '20 in 25', aims to raise £20,000 in just one year – and he has just received £1,750 from Lexus UK's Toyota Community Fund to help him hit his target.

Since April, Lewis, from Leamington, has raised \$5,675 for Myton, achieving this through his own fundraising challenges and the

by **Philippa Mingins**

generosity of his community supporters.

He said: "I am so grateful to Lexus for their generosity and for backing my campaign to raise vital funds for The Myton Hospices. The team at Lexus heard about my campaign during my last show and it's fantastic that we're spreading the message far and wide."

"My family and I were fortunate to experience the very best of what Myton offers our community, and with the support of organisations like Lexus, we can help ensure more families receive that same care when they need it most."

Devinderpal Johal, from Lexus

UK, said: "We are proud to support The Myton Hospices and the work that Lewis has done to engage with his community in raising much needed funds for a cause very close to him. The hospice provides essential care and support to those that need it."

Myton spokesperson Jason Levy added: "We are incredibly thankful to Lewis for his dedication to fundraising and to Lexus for their generous support."

"It is only thanks to the commitment of people like Lewis and the generosity of organisations in our community that we can continue to provide our vital services to patients and their families."

Visit [www.mytonhospice.org/](http://www.mytonhospice.org/) Lewis to find out more.



**On target – Devinderpal Johal, from Lexus UK, hands over the donation to Lewis Williams and Jason Levy.**

**Caroline is still not convinced she is runner material.**



## Pounding the miles helps Caroline raise £900

PATIENTS at a Leamington health charity will be enjoying extra activities after their chair raised more than £900.

Caroline Wilson, now in her early 60s, completed a 5km race in Daventry for Castel Froma Neuro Care.

It was the first race Caroline had entered since childhood, and she raised £905 for the charity that treats NHS patients with complex neuro-

logical illnesses like multiple sclerosis or Parkinson's disease, or who have suffered trauma in an accident.

She said: "This was my first race since school and it was both exhilarating and exhausting, but I was determined to cross the finishing line."

"I'm still not sure I'm runner material, and it took an organisation like Castel Froma to get me motivated to give

it a try. I'm not measuring success by how many minutes it took, but I'm thrilled at how more than £900 has been raised for Castel Froma, money that will be ring-fenced for activities to support residents' well-being."

Caroline explained the NHS only paid for basic care, accommodation and some therapies at the charity's facilities at Lillington House

and Helen Ley House in Leamington.

Many patients need months or years of rehabilitation before they move to more independent living, and so Castel Froma relies on grants and fund-raising to pay for extra activities and entertainment.

Visit [www.gofundme.com/f/improve-lives-at-castel-froma](http://www.gofundme.com/f/improve-lives-at-castel-froma) to donate.



**Helping You Support Someone *Vulnerable*.**

Expert legal advice  
when it matters most.

Talk to our trusted legal advisers *today*.

0121 733 8000  
[wilkes.co.uk](http://wilkes.co.uk)



Your legal partner for all things in *life*.



More than half the staff at the RSC have been invited to take voluntary redundancy.

# 420 invited to take redundancy in RSC shake-up

**THE ROYAL Shakespeare Company (RSC) is being forced to make major job cuts as it grapples with a "challenging" financial situation.**

The world-famous Stratford-based theatre company has invited 420 out of its 835 full-time staff members to take voluntary redundancy as part of a programme running until October 5, following which compulsory redundancies will begin.

The RSC confirmed some positions will be exempt from the voluntary programme, including people who work for the RSC's nursery and in catering.

The total number of redundancies has not yet been confirmed.

The move makes this the largest redundancy programme at the RSC since 2020, when the company was impacted by the Covid pandemic.

The redundancy programme is being rolled out as the RSC continues to deal with the increased costs of making theatre, as well as the cost of infrastructure and a

by Philippa Miggins

decline in money brought in through ticket sales.

In its most recent accounts, the company had total income of just over £82 million against expenditure of nearly £84.5 million.

A joint statement issued by executive director and co-artistic directors Andrew Leveson, Daniel Evans and Tamara Harvey read: "The RSC is transforming so it is best placed to be a leading global theatre company that is part of local, national and international conversations that build connections, create opportunities and spark joy."

"But the conditions in which we operate have become tougher. Materials and energy remain at an all-time high post-pandemic, the costs associated with employing staff have increased, and public investment continues to decline in real terms. And there are ever increasing demands on government spend in intensely challenging economic circumstances."

"Audiences, too, have less money to spend due to the cost-of-living crisis and we

can't expect box office alone to make up the shortfall.

"To thrive – and to survive – the RSC needs to be more agile, resilient and sustainable. Our structure must enable our ambition, not impede it – we must be relentless in our pursuit of working as effectively and efficiently as possible, and we need to generate additional forms of income to invest in the creation of theatre and learning through theatre, which are our founding purpose."

"The need to reduce our cost base is real and urgent. We have held vacancies for some months and wherever possible will continue to do so, and we are now offering as many of our staff as possible the opportunity to apply for voluntary redundancy. Alongside this, we are seeking to make operational efficiencies and to generate additional forms of income."

"This is a challenging moment. But it is our duty – all of us, as custodians of the Royal Shakespeare Company for this time – to ensure that the RSC can bring people together through theatre for generations to come."

## Tennis history talk will be a smash

THE HISTORY of Lawn Tennis in Leamington is the next topic at Warwickshire Local History Society.

Leamington has often been quoted as the birthplace of lawn tennis in 1872. To mark the 150th anniversary, town tennis enthusiast Susan Hopcraft (pictured) will investigate the town's claim to be the roots of this truly global sport at a talk on Tuesday October 21 at Aylesford Primary



School in Warwick.

She will explain the people who shaped the sport originally and trace the clubs, the tournaments, the world events and social influences over 150 years, also taking detours via cro-

quet and squash.

Susan is the author of club history Leamington's Game: A History of Leamington Lawn Tennis & Squash Club.

The talk will start at 7.30pm with tea and coffee served from 7pm.

There is no need to book. This event is open to members and non-members.

Attendance is free, donations are welcomed.

Visit [www.warwickshirehistory.org.uk](http://www.warwickshirehistory.org.uk) for more details.

# Patio Plants & Planters

at the garden lovers' garden centre



[www.farnboroughgardencentre.co.uk](http://www.farnboroughgardencentre.co.uk)

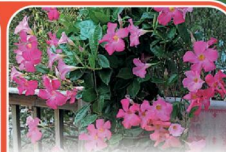
A traditional garden centre that focuses on providing quality plants, garden products & giftware



JAPANESE ACERS



ROSE TREES & BUSHES



CLIMBING PLANTS

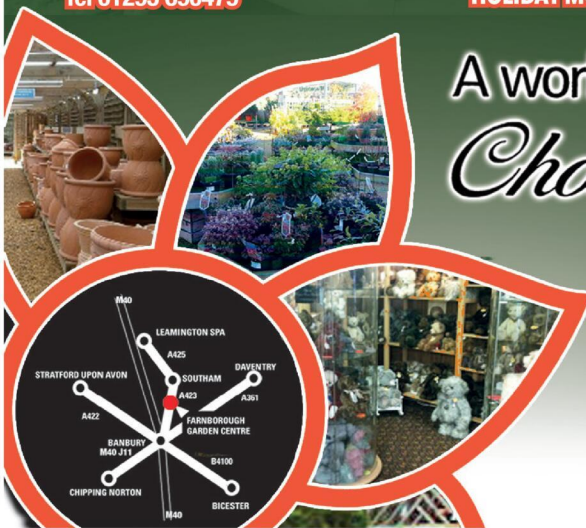


**TEDDY LOVERS**

Come & visit our Treasured Teddies shop & see our huge range of bears, Cuddly Collectables & furry friends including loveable limited editions and everyday huggables

**On A423 Southam Road, Nr Farnborough, Banbury OX17 1EL Tel 01295 690479**

**OPEN SIX DAYS A WEEK Tues - Sat 9 - 5.30, Sun 10.30 - 4.30 OPEN BANK HOLIDAY MONDAYS**



A world of *Choice*

**WHERE THINGS FOR YOUR GARDEN WON'T COST THE EARTH**

## Age UK in legacy campaign

AGE UK Coventry and Warwickshire is encouraging residents to consider leaving a gift in their will to support older people across the region.

The initiative funds vital services such as information and advice, and befriending and counselling, that help residents thrive as they age.

Scott Collins, marketing officer at Age UK Coventry and Warwickshire, said: "We know that writing a will can feel daunting, but leaving a legacy ensures our services can continue making a real difference - right here in our local community."

"Every legacy gift, no matter the size, stays right here in Coventry and Warwickshire."

The charity is also reminding the public about Free Wills Month in October, when eligible individuals can have a simple will written or updated for free through participating solicitors.

To learn more about leaving a legacy, visit [www.ageuk.org.uk/coventryandwarwickshire](http://www.ageuk.org.uk/coventryandwarwickshire) or call 02476 231999.

# Treasured buildings revamped with grant

**THE REPAIR and renovation of the structures of three 19th century summerhouses in Coventry is complete.**

The Grade II\* registered park and garden at Stoney Road Allotments in Cheylesmore.

Historic England provided a £250,000 grant for the restoration of the buildings. Railway Heritage Trust and Network Rail. I'm also grateful for the work of council colleagues too. It is a fascinating project, and it highlights the importance of the wide range of heritage buildings in the city."

The summerhouses had fallen into disrepair and are the last remaining plots of the Park Gardens, established 200 years ago. Stoney Road is one of only four remaining detached Victorian town gardens that are listed on Historic England's Register of Parks and Gardens of Special Historic Interest. The site is still used as allotments and sub-tenanted by the Stoney Road Gardens Association (SRGA). Deborah Williams,

"We really appreciate the

by **Andy Morris**  
[andy.morris@bullivantmedia.com](mailto:andy.morris@bullivantmedia.com)

support of Historic England, Railway Heritage Trust and Network Rail. I'm also grateful for the work of council colleagues too. It is a fascinating project, and it highlights the importance of the wide range of heritage buildings in the city."

The summerhouses had fallen into disrepair and are the last remaining plots of the Park Gardens, established 200 years ago.

Stoney Road is one of only four remaining detached Victorian town gardens that are listed on Historic England's Register of Parks and Gardens of Special Historic Interest.

The site is still used as allotments and sub-tenanted by the Stoney Road Gardens Association (SRGA). Deborah Williams,

"We really appreciate the



Coun Naeem Akhtar and Louisa More, from Historic England, with allotment plot holders outside one of the summerhouses.



Louisa More and Coun Naeem Akhtar cut the ribbon on the newly-restored summerhouses.

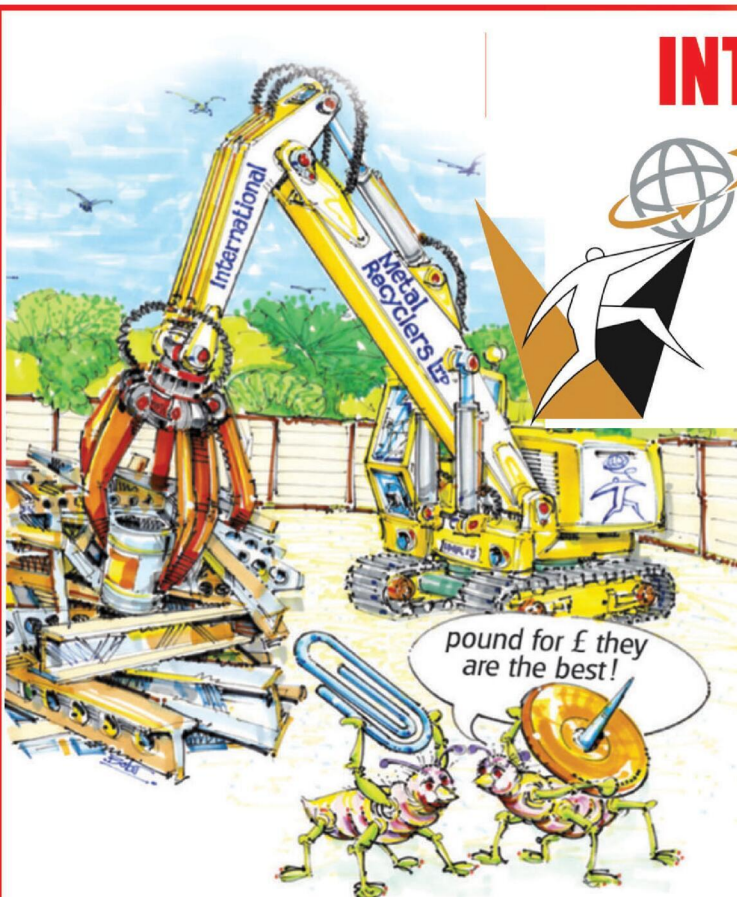
Historic England regional director (Midlands) said: "It is amazing to see the origi-

nal features of the gardens restored. "The Heritage at Risk

funding has meant that three of the Grade II listed summerhouses have received complete repairs to the building structures, including replacement roofs, new windows and doors, reconstruction of walls with lime mortar and original bricks, timber frame restoration, and other internal repairs.

"And it's brilliant that it's all been achieved using traditional methods and materials, restoring the summerhouses to their original form."

The public will be able to visit the summerhouses.



# INTERNATIONAL METALS & CABLE RECYCLING LTD

## We purchase all Ferrous and Non Ferrous Metal Batteries and Cables

.....  
**Collection Service Available**  
.....

**Long Marston Road, Long Marston, Stratford Upon Avon, Warwickshire, CV37 8AQ**

**01789 721 288**

**david@imrltd.co.uk**

**Open Mon/Fri - 8am - 5pm**

# Erin takes on a mammoth trek

A TENACIOUS teacher from Rugby has continued her impressive fund-raising for a mental health charity by completing a 100km walk in two days.

Erin Anderson-Howe embarked on a 100km ultra challenge on the south coast to raise money for Coventry, Warwickshire & Worcestershire Mind - in memory of her partner Bill's brother who died by suicide.

Along with Bill and two teammates, Erin walked the 100km over just 48 hours. The route began at the sea-side town of Eastbourne and finished in Arundel in West Sussex, covering 62 miles and over 2,100m of elevation.

Since 2022, Erin and Bill have now raised over \$11,500 for the charity through their business DRM.

Erin, a science teacher at Avon Valley School, said: "My partner sadly lost his younger brother, Ollie, to suicide. We are absolutely passionate about reducing mental health stigma and starting conversations around mental health, to hopefully prevent other families from going through similar experiences."

"We run our business, DRM, as a social enterprise,



Erin with partner Bill (left) and team mates Andy and Joel.

with 25 per cent of our profits going into the community work that we do, from creating resources and hosting events, blogs and fundraisers to making direct donations to charities.

"We completed this event and run the business in honour of Ollie."

Avon Valley Headteacher Blake Francis said Erin was a brilliant role model for the school's students.

He added: "It was incredible to hear about Erin's completing the ultra-event on the

south coast, and it is even more incredible to see that over \$11,000 has been raised for Mind over the last few years.

"Erin perfectly demonstrates how our school's core values, 'ambition, respect, and care', can be followed and can make a difference to others."

Visit [www.justgiving.com/fundraising/wearedrm2022](http://www.justgiving.com/fundraising/wearedrm2022) for more information about recent fundraising events, or to make a donation.



Lutterworth Leisure Centre held a community party a year ago to mark its reopening following a refurbishment.

## Fun for all at End of Summer Party

A COMMUNITY End of Summer Party is taking place at Lutterworth Leisure Centre on Saturday (September 27).

The day will feature free activities for all ages, abilities and interests, giving people across the local community the chance to explore all the centre has to offer.

Activities include badminton and cheer-leading taster sessions, an activity camp and an inflatable zone. Under-fives will have free access to the soft play area.

Free Atlantis inflatable sessions will take place in the pool, while family swimming will also be available.

The launch of sound bath classes will be in the main studio and is free for those

on You+ memberships, while free health checks will be going ahead in the gym.

Local community groups and businesses will have stalls at the event and mascots Active Monsters and Bee Active will be greeting people around the centre.

Coun Jo Asher, Harborough District Council's Cabinet lead for Culture, Leisure, Economy and Tourism, said: "Following last year's successful refurbishment of the leisure centre, it is great to see this End of Summer Party enabling the community an opportunity to take part in lots of different activities."

Visit <https://tinyurl.com/ysjz959m> for more information.



PHOENIX COACHES

|  | Adult  | Child  |
|--|--------|--------|
| <b>September</b>                             |        |        |
| 20th Llandudno.....                          | £29.50 | £24.50 |
| 23rd Tewkesbury.....                         | £25.00 | £20.00 |
| <b>October</b>                               |        |        |
| 4th Gloucester Docks.....                    | £24.00 | £19.00 |
| 11th Windsor.....                            | £27.50 | £22.50 |
| 18th Blackpool Illuminations.....            | £29.50 | £24.50 |
| 25th Camden Market.....                      | £29.00 | £24.00 |
| 27th Weston-Super-Mare.....                  | £27.00 | £22.00 |
| 29th Liverpool & Afternoon Tea Cruise.....   | £49.00 | £37.00 |
| 31st Fantasy Island Ingoldmells.....         | £27.50 | £22.00 |
| <b>November</b>                              |        |        |
| 1st Bury Market.....                         | £27.00 | £22.00 |
| 22nd London Shopper.....                     | £29.00 | £24.00 |
| 27th Christmas Lunch & Entertainment.....    | £36.00 |        |
| <b>December</b>                              |        |        |
| 2nd Melton Mowbray.....                      | £25.00 | £20.00 |
| 6th Stratford Victoria Christmas Market..... | £18.00 | £10.00 |
| 6th Hampton Court at Christmas.....          | £58.00 | £50.00 |
| 13th Meadow Hall Sheffield.....              | £27.00 | £22.00 |
| 20th Black Country Museum.....               | £35.00 | £22.00 |
| 22nd Pub Lunch & Stratford.....              | £30.00 | £24.00 |

**Lytham St Annes & The Lake District - 26th-29th September 2025**  
 Monterey Beach Hotel 4 Days/3 Nights £355 Per Person  
 Price includes All coach travel, 3 nights accommodation, evening meal & breakfast, steam train, boat trip and entrance to Beatrix Potter experience.

**Blackpool - The Grand Hotel 31st October - 2nd November 2025**  
 3 Days/2 Nights £185 Adult, £99 Child  
 Price includes, All coach travel, 2 nights accommodation, evening meal and breakfast

[www.phoenixcoaches.org.uk](http://www.phoenixcoaches.org.uk)

Tel No 02476 350 811. 50 Southfield Close, Nuneaton. CV10 OBE

## YOUR CHAIR DESIGNED FOR YOU

Birmingham & Solihull's leading recliner and chair specialist



From Petite to Extra Large Including a 5 year guarantee  
 You'll be spoilt for choice at Dennetts



Family business since 1901

Call us today... 0121 706 1577

1182 Warwick Road (Oxford Rd Corner)

Acocks Green, Birmingham, B27 6BT

[www.dennettsfurniture.co.uk](http://www.dennettsfurniture.co.uk)

DENNETTS OF ACOCKS GREEN

discover the difference AT DENNETTS



# SOS offers free training course to save a life

by Lise Evans  
lise.evans@bullivantmedia.com

**A SUICIDE prevention charity is calling on residents to take positive action to support people who might be at risk of taking their lives.**

SOS Silence of Suicide is launching a free training resource designed to help anyone have the confidence to step into difficult conversations about personal struggles, emotional well-being, or thoughts of self-harm.

The launch marks the 10th anniversary of the Warwick-based organisation which is determined to eradicate the shame and stigma around poor mental health and suicide.

Called OPEN Conversations, it is available as a self-paced online course for individuals or a trainer-led version for groups, workplaces, and schools. The charity believes the need has never been greater.



**OPEN Conversations is a new free training programme offered by SOS Silence of Suicide.**

According to the Office for National Statistics in 2023, 5,579 people committed suicide in the UK – an average of 15 families every day are left devastated by the loss of a loved one, be that a daughter, father, best friend, or colleague.

Charity trustee Julie Tobin said: "Too many people stay silent because they're scared of saying the wrong thing. But saying nothing can cost a life."

"This course gives people

the confidence to lean in and say, 'I've noticed you're struggling... and I care.'

"If OPEN Conversations helps even one person to step in and save a life, then our 10 years of work will have truly counted."

The course has already been embraced by the charity's lead supporters, broadcaster and journalist Wendy Turner-Webster and her actor husband Gary Webster.

Speaking about her experience, Wendy said: "OPEN Conversations is something everyone should take. It's simple, powerful, enlightening, and gives you the courage to reach out when someone might need you the most. I truly believe this course has the potential to help save lives, and I'm proud to stand alongside SOS in sharing it with the nation."

The online course takes about 60 minutes to complete.

Visit [sossilenceofsuicide.org/courses/free-mental-health-training/](https://sossilenceofsuicide.org/courses/free-mental-health-training/) for more info.



**Members of the paediatric team and league secretary Steve Falp outside the Blossom Suite at Warwick Hospital.**

## Fooball league donation is a winner

**GOOD sports have donated £1,000 to an extra special children's ward at Warwick Hospital.**

The cash has come from the Tracey Thomas Leamington and District Sunday Football League and will help support families and children attending the hospital's Blossom Suite, a dedicated room for children and young people at the end of their lives. Based

on MacGregor Ward, it provides a peaceful and private environment for families to spend time together.

Designed to ensure the facility is not clinical but a more comforting area, the suite includes a pull-out bed, blankets and homely touches.

The donation will help the hospital further enhance the suite, including the develop-

ment of a private outdoor garden area.

League chairman Mark Rowlatt said: "We are delighted to be able to donate this money to such a worthwhile cause. The teams in the league have raised this amount over the season and I'm really pleased that we can help with such an important asset which will be used to give comfort when it's most needed."



**PRESTIGE DENTAL CARE**  
THE GENTLE DENTAL CENTRE

**NHS**  
**Invisalign**  
clear aligners  
from **£2,300**  
per arch

**Modern**  
**Equipment**  
and  
**Techniques**



**Dental**  
**implants**  
from **£2,800**  
per tooth  
inc Crown

**Gentle Dental Centre**

318 - 320 Bell Green Road,  
Coventry, England, CV6 7HB

**Telephone: 0247668 7855**

**Website: <https://gentledentalcentre.co.uk>**

# THE BED FACTORY

**SPECIALISTS IN BEDS AND MATTRESSES FOR PEOPLE WITH BACK, SHOULDER OR HIP PAIN.**

# SALE NOW ON

### The Harrison Handmade Beds



Complete Range of Harrison FR **Chemical Free** Beds on Show

### Special Price Ottoman



**FREE HEADBOARD**

Single £449 • Double £499  
King £599 • Super King £699

### Sutton Wooden Frame Hand Made Frame



Single £339 • Double £419  
King £469 • Super King £589

### 1 WEEK DELIVERY ON ELECTRIC BEDS



**FREE AT HOME SELECTION AVAILABLE**

**5 POINT MASSAGE MATTRESS NOW AVAILABLE TO TRY IN STORE.**

We are specialists in electric adjustable beds and have A Large Selection Available Starting From £999

### Avon Fire Side Chair



£669.00

### Special Edition 2 Drawer Bed Set



**FREE HEADBOARD**

3'0 was £449 now £389  
4'6 Was £599 now £499  
5'0 was £699 now £599

### Bedroom Furniture



Full Range of Bedroom Furniture Available

## Celebrity studio in store



**Mammoth Ultimate Health Mattress**  
5'0 Pure Mattress or 2000 Limited Stocks  
Reduced from **£2139**  
TO JUST **£1599**

Helps reduce back, shoulder and hip pain

**FREE Local Delivery and FREE Disposal on orders over £499\***

\*Terms and conditions apply see in store

## Leamington's Largest Independent Bed Retailer

**We can supply a large range of beds in 1 to 2 weeks - 3' Single Beds also available - WE SUPPLY WHEN OTHERS FAIL**

139 Regent Street, Royal Leamington Spa, CV32 4NX

**01926 422404**

sales@thebedfactory.co.uk  
and www.thebedfactory.co.uk



# Picture special



Super Me Foods demonstrates dough making. 3925003MMR1



Rock Choir put on a show. 3925003MMR6



Crowds enjoy the demonstrations. 3925003MMR12



Ava-Rose (seven) tries some cheese. 3925003MMR5

## The perfect ingredients

**CHEFS and street food vendors cooked up a treat at the Rugby Autumn Food and Drink Festival last weekend.**

The centrepiece was the pop-up kitchen in Regent Place Gardens, where chefs hosted a variety of demonstrations on how to make the perfect Scotch eggs, sweet focaccia, cupcakes, pizza dough, cocktails and more. There were handy tips and samples of their creations.

Also on the menu was live music, family entertainment, and more than 50 stalls selling food and drink from local businesses, farms and producers.

As ever, the event drew hundreds of hungry punters to the town centre – and the Observer went along to take a few snaps.



Questions for Graham Proud of The Seven Stars. 3925003 MMR11



VERTICAL



ROLLER



VENETIAN



ROMAN



SHUTTER



INTU

**10 YEARS WARRANTY ON SHUTTER BLINDS**



Available in beautiful and stylish Hard Wood and Faux Wood

**WE WILL BEAT ANY LIKE-FOR-LIKE QUOTE**

Visit us at: 21 Brixham Drive, Coventry, CV2 3LA

Email: [info@brixham-blinds.co.uk](mailto:info@brixham-blinds.co.uk)

Contact us today for a **FREE** no-obligation quotation

**T: 02476 666686 [brixham-blinds.co.uk](http://brixham-blinds.co.uk)**

# BRIXHAM

# BLINDS

## Residential and Commercial

Brixham blinds are a well-established blinds company offering to trade and consumer. With a great range of quality bespoke and made to measure blinds by an established blind company you can trust.

Whether you're thinking of vertical blinds, roller blinds, venetian blinds or roman blinds, shutter blinds, all of our blinds come with child safety regulations and fittings to make sure your home is safe.

# Picture special



Rugby Gin's Clair Townsend and Rob Riddell. 3925003MMR2



TOP: Ice cream time for William (eight) and Annabelle (five). 925003 MMR13



Bee and Tom enjoy a drink. 3925003MMR7



LEFT: Jonas (six) practicing his circus skills. 925003 MMR9



Jagroop Singh of Chilli Guys. 3925003MMR10

**Pictures by Marcus Mingins**



## OUR BIG SALE IS STILL ON

### OPEN 7 DAYS CV6 5EY

**INFLATION EVERYWHERE - BUT NOT AT CARPET MILL!**

Everything is going up in price, the same for Carpets and this is why it pays to go to Carpet Mill. Manufacturers of yarn and other materials for making carpets have all had price rises and some manufacturers are busy changing their specifications to many ranges to compensate. They also get surplus rolls that they cannot sell to the big stores as they don't have enough stock left to service them.

**Therefore, we are buying those rolls at a FAT DISCOUNT and passing it on to YOU.**






**Everything Reduced BE QUICK**

## BRAND NAME CARPETS AT LOW LOW PRICES

*From quality Axminster to budget cord*

We are recommended for our low prices, quality service and extensive range throughout the Midlands. There are no R.R. prices on carpets, so if others give 50% offers or sales discounts, is it 50% off their normal high prices. ALWAYS compare with Carpet Mills normal prices!!!!!!!

# CARPET MILL

**CROMWELL STREET (OFF RED LANE) COVENTRY CV6 5EY TEL: (024) 7666 1985**

SOME CUSTOMERS TRAVEL MILES - YOU DON'T HAVE TO - WE ARE HERE

[www.salecarpet.uk](http://www.salecarpet.uk)



# Firms urged to get out on their bikes

**THOUSANDS** are getting on their bikes in Warwickshire this month as part of an active travel campaign that aims to build on the success of the Lloyds Tour of Britain Men's cycling race.

Warwickshire was in the spotlight when it hosted stage four of the Tour earlier this month, when thousands of spectators lined the 120-mile route to watch some of the world's best riders.

Coordinated by Love to Ride and supported locally by Warwickshire County Council, Cycle September is an inclusive national campaign held annually to highlight the many health benefits of active travel and to get more people riding for fun, fitness, transport and community connection.

Cycle September is free to enter and open to cyclists of all ages, ability and experience.

Whether a short trip to the shops or school or a longer bike ride, riders can track their bike miles on the Love to Ride app.

As part of the initiative, businesses and colleagues across Warwickshire can compete against each other in a race to earn the most Cycle September points and a coveted place at the top of the corresponding

by Philippa Mingins

leaderboard. More than 40 companies and over 420 riders have already signed up to the competition.

Leamington-based transport planners and civil engineers The Transportation Consultancy are going the extra mile in their support of Cycle September and are flying high in the leaderboard for companies with seven to 19 staff members.

Director Annabel Precious said: "We see first-hand the many benefits of cycling: from commuting, fitness, and social connection, to wider gains in public health and the local economy. Initiatives that encourage more people to cycle throughout September are very welcome, as they help to ensure communities of all kinds can share in the far-reaching benefits that cycling brings."

Kate Evans, head of media relations at the Royal Shakespeare Company, added: "We've found that many of our staff already cycle to work and we've been encouraging them to join in Cycle September. It's a friendly competition and a great way for people to have the chance to be rewarded for getting on their bike."

Go online to [www.lovetoride.net/warwickshire](http://www.lovetoride.net/warwickshire) for more details.

# Deadline looms for Young Poet competition

**BUDDING** poets in Warwickshire have less than a week to apply to become the county's Young Poet Laureate for 2025-26.

Open to 13 to 17-year-olds who live and are educated in Warwickshire, the Young Poet Laureate scheme offers a platform to perform original poetry, receive mentorship from a professional poet, and take part in a variety of creative events across the county.

Just this month, current Young Poet Laureate Ananditha Venkatraman was commissioned to write a poem for the Warwickshire leg of the Men's Tour of Britain. She performed her poem live on stage at the start line; it was featured in event artwork, and was even performed by cycling commentator Ned Boulting.

Throughout her tenure, Ananditha has been featured on Warwickshire Libraries' What's On Guide, performed at open mic nights and youth conferences, been interviewed on local radio, led workshops, and appeared at literary festivals.

A Warwickshire County Council spokesperson said: "The Young Poet Laureate programme is a shining example of



Warwickshire's Young Poet Laureate Ananditha Venkatraman has taken part in a variety of creative events across the county.

how we can nurture creativity and confidence in our young people. It opens doors to incredible experiences – from performing at major public events to working with professional artists – and gives our young poets a powerful voice in the community."

Applicants must submit three poems, a personal statement, and optionally a video performance. One poem should be inspired by Warwickshire, one

by libraries, and the third on a topic of their choice.

Shortlisted candidates will be invited to a Selection Day at Rugby Library on Saturday November 29, which includes a workshop with a professional poet, interviews, and a live performance.

Applications close at midnight on Thursday October 2. Visit [www.warwickshire.gov.uk/youngpoetlaureate](http://www.warwickshire.gov.uk/youngpoetlaureate) for more information or to apply.

**BOOK YOUR MOBILITY SCOOTER SERVICE WITH FREE BATTERY CHECK NOW - CALL FOR DETAILS**

**★ STAR DEAL ★**

**COMPACT SCOOTER**

- Easy To Transport
- Breaks into 4 Parts
- 4 MPH
- Free Insurance\*

**BRAND NEW WAS £999.99**

**£699.99**

**SAVE £300**

**★ STAR DEAL ★**

**RISER RECLINER CHAIR**

Relax in total comfort, helps to stand you up from sitting and raises your legs to help with circulation

**BRAND NEW WAS £799.99**

**£499.99**

**SAVE £300**

**STAIR LIFTS**

Give your life a lift  
Enjoy your home

- Safe and reliable
- Easy to use
- Remote control
- Swivel Seat
- Safety sensors

**FULLY FITTED**

**From £1,699**

Monthly Finance Available  
Call for details

**NEW MOBILITY SCOOTER**

**FROM £15 PER WEEK**

Do You Receive The Higher Rate Mobility Allowance?  
If so you can use part of this allowance to get A New Scooter or Powered Wheel Chair From as Little as £15 a week

**CALL FOR A FREE QUOTE**

Wheelchairs from **£129.99** • Motorised Bath Lifts from **£279.99**  
Commodores from **£59.99** • 3 Wheel Walkers from **£69.99**

Max Mobility Ltd, 7 Sherbourne Arcade, Coventry, CV1 1DN (opposite Home Bargains)

[www.maxmobilityltd.co.uk](http://www.maxmobilityltd.co.uk)

Pictures for illustration • Prices with VAT Exemption

CALL TO BOOK YOUR SCOOTER SERVICE

02476 630444

# Special Family Announcements



Births, Engagements, Weddings, Anniversaries, Happy Birthdays, Congratulations or sadly Deaths and In Memory Announcements can all be placed in your **Observer** to appear in printed newspaper weekly, and online247

You can call us on **01527 588688** or email details to us (including photograph if desired) with your telephone contact details and we will call you back to confirm cost **[reception@bullivantmedia.com](mailto:reception@bullivantmedia.com)**

Prices start from just **£15** (inc Vat)

# Ready for some Christmas Cheer

★★ NOW AVAILABLE ★★

## BUY NOW PAY LATER

SPREAD THE COST OF YOUR NEW KITCHEN

Transform today, pay later.

**CALL FOR DETAILS**

### ...with nothing to pay until next year!

At Joe's Doors, we can give your kitchen a brand new look – without the mess, stress or massive price tag.

**With no ripping out or emptying of cupboards,** we replace your existing doors, panels and trims to completely transform your kitchen – often in just **two days**.

Choose from a huge range of stylish designs and enjoy a stunning new space that feels like a Christmas miracle – because it kind of is.

- ★ Transform today, pay later – with Buy Now Pay Later finance
  - ★ Free design, free quote, free survey
  - ★ And absolutely no pressure – just Joe's honest advice
- Ready for some Christmas Cheer?

**Book your free visit today with Joe's Doors – and fall in love with your kitchen all over again.**



AS SEEN ON TV



✓ NO NEED TO EMPTY CUPBOARDS ✓ NO MESS, NO FUSS ✓ FITTED IN A DAY OR TWO ✓ MADE TO MEASURE

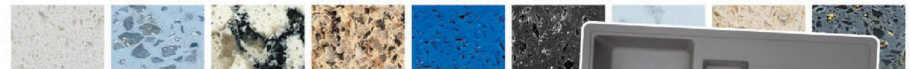


## QUARTZIZE

### Complete the look with a natural stone overlay from Quartzize

Why replace your worktops when this unique quartz overlay simply fits over your existing surface. Here are some of the amazing benefits:

- **Timeless** – Looks clean and modern.
- **Hygienic** – A perfectly smooth surface.
- **Easy care** – Wipe with a neutral cleaner.
- **Durable** – Tough and scratch resistant.
- **Easily Installed** – Fitted in less than a day.



### Three easy steps to transform your kitchen:

- 1** We'll pop along and take some measurements...
- 2** Choose from our range of doors and worktops...
- 3** Our fitters will come back and transform your kitchen.

## JOE'S DOORS & OVERLAYS



02476 101914 • 01926 800726 • 01788 422326  
joesdoors.co.uk

Lines Open: Mon - Fri: 8.30am - 8.00pm, Sat: 8.30am - 6.00pm, Sun: 9.00am - 5.00pm. Over 30 years experience.



## XMAS OFFER

FREE SINK WORTH £229\*

Present this voucher to our Home Consultant on the day of your survey.



\*limited period promotional voucher. Terms and conditions apply.

# Council launched new scheme to help reduce electronic waste

**THOUSANDS** more Coventry residents will be able to get online and find a local solution for recycling and reusing electronic waste.

Coventry City Council has established a new 'circularity project' with Virgin Media O2 to reuse businesses' unwanted tech.

The partnership will expand the council's #CovConnects Device Bank - described as a 'foodbank for digital kit'.

The Device Bank works with local organisations - including NHS ICB Coventry and Warwickshire, and the University of Warwick - to data wipe and refurbish unwanted tech such as laptops and smart phones.

Local charities, community organisations, NHS services and council initiatives can then access the Device Bank to support residents. Alternatively, residents can access the devices via the Libraries laptop loan service.

The initiative is helping people experiencing financial hardship, those living with long-term health conditions or in temporary accommodation.

Coun Richard Brown, Cabinet Member for Finance at the council, said: "This is a great project and I really hope it will accelerate the second-hand tech reuse across the city that is already underway here."

"The big difference is it will aim to develop a way for old prod-



Coventry Carers Trust Heart of England gifts reused laptops to young carers via the #CovConnects Device Bank.

ucts, that would be wasted by local organisations, to be cleaned and revamped locally and found a new home in the city.

"For instance, when the Council has older laptops - rather than dump them - we clean them and

make them available to people living in the Coventry area. We want to work together with other local businesses and organisations, to help create a city-wide approach benefiting Coventry, as it has an added benefit to the environment.

"It will further bolster digital access for residents across the city too, to ensure everyone has equal opportunities to access the benefits getting online can bring, and I hope lots of organisations will find ways to get involved meaningfully."

The project aims to increase the number of Coventry businesses and organisations that donate their unused tech to #CovConnects.

Coun Brown added: "Creating a model of circularity, where unwanted tech can be used again and again within the city, also reduces the overall need for new devices."

With more than four in 10 Coventry residents not having access to a laptop, the programme will help more digitally excluded people benefit from the online world.

Over the next 18 months, the organisations will encourage more businesses and public sector organisations to donate their unused devices, and will work together to identify and address barriers that might prevent obsolete tech from being donated for reuse.

Dana Haidan, Chief Sustainability Officer at Virgin Media O2, said: "This is a landmark moment for Virgin Media O2 as we take our next step in championing a more circular economy for tech in the UK."

"Our ambition is to create a model of circularity that has a reuse-first approach, enabled via local device banks, which can then be replicated and rolled out across the UK."

"The most successful circular models are ones that are hyperlocal, utilising networks and partners that are grounded in local community needs."




Coming to the West Midlands ....

## 74<sup>th</sup> British National Ploughing Championships & Country Festival

- Heavy Horses Ploughing
- Steam Ploughing Engines
- Vintage Tractors & Displays
- Agricultural Machinery Demonstrations
- Trade Stands ~ Shopping Stalls ~ Crafts
- Over 250 Champion Ploughmen & Women

**ALLESLEY, COVENTRY  
WEST MIDLANDS, CV5 9DH**

**11<sup>th</sup> & 12<sup>th</sup> OCTOBER 2025**

www.ploughmen.co.uk 01302 852469   

Admission: On the day - Adult £15 per day; Child £2. Discounted tickets available in advance - online only.



*It's a great day out!*

# Roll Up! Roll Up! Roll Up!



# GODIVA CARPETS

now have the

## GREATEST FLOOR SHOW IN TOWN

**Our extensive range of Carpets, Wooden Flooring, Vinyls, Laminates and Rugs at Discounted Prices will suit every pocket and every budget**

Because Godiva Carpets have been fitting carpets and flooring in homes and businesses across Coventry and Beyond for over 70 years, they have tremendous buying power, which means they can offer you

**LOW, LOW Prices, allied to GREAT, GREAT Service**

Whether you are looking to make your rooms beautiful with a touch of class, or if you are looking for something cheap and cheerful at Godiva Carpets & Flooring **'We've got you covered'**

Top Quality Wilton Royal to Branded Room size remnants to clear and ready to go (*No reasonable offer refused*)

**Landlord deals from only £24!**



**OUR NORMAL OPENING HOURS ARE 9AM TO 5.30PM MONDAY TO SATURDAY (CLOSED ON SUNDAYS)**

# 02476 551200

**GODIVA CARPETS LTD, ARGYLE HOUSE, COLLINGWOOD ROAD, EARLSDON, COVENTRY CV5 6HW**

VISIT OUR ONLINE STORE [WWW.GODIVACARPETS.CO.UK](http://WWW.GODIVACARPETS.CO.UK)



# GODIVA CARPETS

*A family business trading since 1953*

**CLOSED SUNDAYS**

## Buyers back better welfare

**MORE THAN half of West Midlanders would pay more for British products with higher-welfare labels over cheap imports, according to new data.**

The survey, by RSPCA Assured, revealed that 64 per cent of shoppers from the region would spend more and buy British higher-welfare labelled products – such as free-range, organic and RSPCA Assured-labelled – rather than settle for cheaper alternatives.

The YouGov poll, carried out for RSPCA Assured, the UK's only farm assurance scheme solely focused on animal welfare, also found that more than a third of West Midlanders would go elsewhere if their usual shop didn't have higher-welfare labelled British food options available.

The findings come as RSPCA Assured supported Back British Farming Day (September 10) by urging those who eat meat, fish, eggs or dairy to choose trusted higher-welfare labels.

Charlotte Thomas, regional assessment manager at RSPCA Assured, said: "Every time you choose a product with a higher-welfare label, you help ensure farmed animals live better lives."

"With this one simple choice, you're saying no to cages, no to fast-growing chickens, no to inadequate enrichment and bedding, no to routine antibiotic usage and more. You're also protecting those British farmers who adhere to higher-welfare standards from unfair competition from cheaper, lower-welfare imports."

# Mayor puts forward his growth plan to ministers

THE MAYOR of the West Midlands was joined by regional leaders as he took the region's Growth Plan to Westminster – pressing the case for jobs, investment and opportunity in every part of the region.

Accompanied by MPs, ministers, local politicians and businesses, Richard Parker hosted an event in Parliament designed to put the West Midlands at the forefront of Government thinking.

The Secretary of State for Business and Trade, Peter Kyle, joined the event to underline the importance of national priorities working hand in hand with local plans - and to give the plan Government backing.

The Mayor was also joined by members of his taskforces – the groups set up by the Mayor to help guide policy and actions that tackle some of the region's biggest challenges and deliver his key priorities.

Mr Parker, said: "The Growth Plan is rooted in the strengths

by Sarah Mason  
sarah.mason@bullivantmedia.com

of our region – from advanced manufacturing and health tech to the creative industries and clean energy. Built with business, backed by government and designed for delivery.

"But it will only succeed if national priorities and local action come together."

"I came to Westminster to make the case that our region is ready to deliver growth, create good jobs and tackle the inequalities that hold too many people back. The West Midlands will not be an afterthought - we'll be at the forefront of Britain's future economy."

The Growth Plan sets out flagship projects across the region, including the Coventry City Centre and Investment Zone Growth Corridor including Green Power Park, the Sports Quarter and Birmingham Knowledge Quarter and Metro extension connecting Sandwell and Dudley.



Peter Kyle and Richard Parker, right, discuss the Growth Plan.

Mr Kyle, said: "I've only been in post a short time, but Richard has already made sure the voice of the West Midlands is loud and clear in Westminster."

"I was delighted to stand alongside him and regional leaders in Parliament, making the case for jobs, investment and opportunity

in this region. The change people expect will only happen if we work together – Government and Mayors side by side – to deliver for communities across the country."

To read the Growth Plan in full visit the West Midlands Combined Authority's (WMCA) website.




Midland Hand Clinic is a locally based private service treating hand, wrist and elbow conditions.

We treat privately insured and self funding patients.



**Mr G Shyamalan**  
Consultant Hand Surgeon

- Carpal tunnel
- Trigger finger
- Dupuytren's
- Arthritis
- Trauma
- Tendonitis
- Cubital tunnel
- Golfers elbow
- Tennis elbow

01827 892 952  
www.midlandhandclinic.com






## Is Hand Pain Holding You Back?

Whether it's the frustration of struggling with buttons, the difficulty of opening jars, or the sadness of not being able to plant bulbs in your garden, it can be truly upsetting when pain and discomfort affect your hands.

Many common hand conditions share similar symptoms, but understanding the signs can help you identify what might be going on. Can you spot the symptoms of these common hand conditions?

### Common Hand Conditions and Their Symptoms

#### Carpal Tunnel Syndrome

Carpal tunnel occurs when a nerve in your wrist is put under pressure. You might be at higher risk if you have diabetes, are pregnant, or if your job or hobbies involve repetitive hand movements.

#### Symptoms to look out for:

- Pins and needles in the fingers, especially the thumb, index, middle, and half of the ring finger.
- Numbness in the hand.
- Muscle wasting in the thumb area (in more severe cases).
- Waking from sleep due to hand discomfort or numbness.

#### Dupuytren's Disease

Dupuytren's disease involves a thickening of the tissue in the palm, fingers, or thumbs, often causing fingers to bend inwards towards the palm. Risk factors include smoking, heavy alcohol consumption, manual work, diabetes, and a family history of the condition.

#### Symptoms to look out for:

- A finger that has started to contract (bend downwards) or a noticeable lump in the palm.
- It most commonly affects the ring and little finger, but can appear in any finger or even the thumb.

#### Common Cause of a Palm Lump: Thumb Arthritis

Thumb arthritis frequently affects the basal joint at the base of the thumb. This can make everyday small tasks, like doing up buttons, quite challenging.

### Symptoms to look out for:

- Pain and stiffness at the base of the thumb.
- A reduction in grip strength.
- Clicking and cracking sounds in the joint with movement.

### Trigger Finger

Trigger finger happens when a tendon in the front of your hand thickens and gets "caught," causing your finger to lock in a bent position.

### Symptoms to look out for:

- A finger that locks down in a bent position.
- A clicking sound or sensation when trying to straighten the finger.
- It can affect any finger, and sometimes the thumb.
- Pain that radiates up the arm from the affected finger.

### Why Choose Us? What Our Patients Say:

"An extremely nice man. Professional but very pleasant and caring. He listened to me and took the time to explain things and advise me. I felt confident in the treatment offered and would have no hesitation in consulting him again and would recommend him to others".

"I have been treated by Mr Shyamalan before and find him excellent. That is the main reason for using the clinic".

"Genuinely caring surgeon, very happy with how I was treated".

"I can only say 5 stars for Mr Shyamalan. Friendly, kind and very easy to talk to. Very happy after keyhole surgery to help my wrist problems. Highly recommended".

### Get In Touch – We Can Help

If you're experiencing any of the symptoms listed above, and if hand pain is getting in the way of your day-to-day life, please don't hesitate to get in touch with us. We're here to help you understand your condition and find the right solution to get you back to doing the things you love.

www.midlandhandclinic.com

# RCN BEDS FURNITURE

**£599**

**SAVE**

**RECLINERS**

**£899**

**OTTOMAN BEDS**

**£299**

**WHILE STOCKS LAST!**

**SAVE**

**SAVE**

**OAK/PINE BEDROOMS**

**SAVE**

**SAVE**

**CARPETS**

**SAVE**

**ITALIAN SOFAS**

**SLIDING ROBES**

**SAVE**

**SAVE**

**MATTRESSES**

**BEDROOM FURNITURE**

**SAVE**

**SAVE**

**WE ARE OPEN 6 DAYS 9AM-5PM**

**rcn**  
Beds & Furniture

**HENLEY ROAD, COVENTRY**  
**TEL: 02476 603254**

# Crowds set to flock to literary festival as big names announced

by Ian Hughes  
ian.hughes@bullivantmedia.com

**PHILIP Pullman and John Cleese are just two of the big names appearing at Stratford Literary Festival this autumn.**

The festival, which runs from October 30 to November 2, will feature more than 70 events over the four days, including bestselling authors, broadcasters, comedians, historians as well as emerging writers, workshops and immersive events for families.

Pullman will be launching *The Rose Field*, the final instalment of his globally successful *The Book of Dust* trilogy - a momentous occasion for the many millions of his fans who have followed the adventures of Lyra over 30 years - while Cleese will be celebrating 50 years of *Fawlty Towers*.

Others big names attending include broadcaster and bestselling author Graham Norton who will be talking about his latest novel *Frankie*, and former SNP leader Nicola Sturgeon who will be talking about her book *Frankly*.

The BBC's chief international correspondent Lyse Doucet will be talking about the hopes and tragedies of Afghanistan through the lens of one of its most famous hotels, BBC Radio 6 presenter Mark Radcliffe will share his travelogue, while poli-

tician turned Goggleboxer Gyles Brandreth will celebrate 100 years of Winnie the Pooh and the darker story behind the creation of the beloved bear.

Actor and Time Teamer Tony Robinson turns to fiction, and the creator of the *Slow Horses* phenomenon Mick Herron reveals the latest *Slough House* instalment.

Following on from the *Lionesses* Euros success on the football pitch, Sue Campbell and Denise Lewis talk about the transformative power of sport, and player turned coach Martin O'Neill considers the great football managers of recent times.

The programme's politics and current affairs strand will see former judges among others consider the challenges to law and democracy, while historic events both ancient and modern will be put under the spotlight by leading historians.

Other hot topics on the agenda include everything from toxic masculinity to the asylum system, and the crisis in prisons to environmental crime carried out by global corporations.

But there will also be plenty of laughs with the *Live* at the Apollo comedians Cally Beaton and Rhys James, a special tribute to the late Victoria Wood, and Gavin & Stacey star Joanna Page will be talking about a career that includes *Love Actually* and life on Barry Island.

For families, the author Max Evans brings the Bard to life with a



new adventurous tale, there's crafting and free Halloween fun, and a comic workshop with Phoenix Comic star Thiago Moraes. Gamers can also learn how to play *Dungeons and Dragons*.

Festival director Annie Ashworth said: "This is the biggest autumn

festival we've staged yet, and we're really excited by the stature of some of the speakers and the broad reach of the programme which we think includes something for everyone - whether your interest is comedy, history, world affairs, great fiction, wine, crafting, or you simply want

to come and hear experts and learn new things."

Visit [stratlitfest.co.uk](http://stratlitfest.co.uk) for tickets and full details.

**Some very well known names and faces will be appearing at Stratford Literary Festival.**

By Coach from Coventry, Rugby

Reader Travel

**SUPERDEAL**

**EASTBOURNE SUPERDEAL**

**Departing Fri 6 Mar '26**

Popular Eastbourne is perfect for a change of scenery! Come along and enjoy plenty of time to explore or relax at our hotel on the promenade: complete with a bar offer, entertainment, meals and return coach travel, this superdeal is excellent value for money!

**SO MUCH INCLUDED...**

- ✓ Return coach travel from Rugby
- ✓ 3 nights at the Majestic Hotel, Eastbourne (JG2 rating) with dinner & breakfast
- ✓ 2 for 1 bar (6pm-9pm) on selected drinks
- ✓ Entertainment some evenings
- ✓ Free time in Eastbourne

**4 Days by Coach only £139**

Single Supplement £45

**SUPERDEAL**

**GREAT YARMOUTH SUPERDEAL**

**Departing Sat 21 Feb '26**

Escape to Great Yarmouth for a superdeal that won't break the bank! This is a wonderful chance to enjoy Norfolk's most popular seaside resort without the crowds and relax at our hotel located near the seafront, where we include a fantastic 99p bar!

**SO MUCH INCLUDED...**

- ✓ Return coach travel from Coventry
- ✓ 3 nights at the Waverley Hotel, Great Yarmouth (JG2+ rating) with dinner & breakfast
- ✓ 99p bar (7pm-10pm) on selected drinks
- ✓ Free time in Great Yarmouth

**4 Days by Coach only £139**

Single Supplement £45

**SUPERDEAL**

**TORQUAY SUPERDEAL**

**Departing Tue 10 Feb '26**

Return coach travel, selected meals, a well-located hotel, happy hour and time in the beloved resort of Torquay: tick! On this great-value superdeal, we've taken the hassle out of planning so you can simply enjoy everything the English Riviera has to offer.

**SO MUCH INCLUDED...**

- ✓ Return coach travel from Rugby
- ✓ 3 nights at the Ashley Court Hotel, Torquay (JG2 rating) with dinner & breakfast
- ✓ Happy hour (7pm-9pm) on selected drinks
- ✓ Entertainment on one evening
- ✓ Free time in Torquay

**4 Days by Coach only £139**

Single Supplement £45

YOU PACK THE SUITCASE, WE PACK THE VALUE

VALUE PROMISE

For more information, or to book, please call **03332 342 514** or visit us online at [justgoholidays.com/OSG](http://justgoholidays.com/OSG)

Quote OSG

033 numbers are free within inclusive minutes packages otherwise standard rates apply.

These packages are subject to Just Go! Holidays terms & conditions. Coach bookings are protected by Bonded Coach Holidays & the Association of Bonded Travel Organisers Trust Ltd. Air holidays are ATOL protected No. 10885. Prices are per person, based on two people sharing a room & required on bookings made up to 7 days prior to departure, after which prices may fluctuate. Calls to OSG numbers are free with inclusive minutes packages, also standard rates apply. Choices of date, hotel, airport or pick up location may incur a supplement. Please see website or call for full details.

justgohols

SILVER WINNING BRITISH TRAVEL AWARDS 2024

BEST COMPANY

## Give a helping hand to wildlife

RESIDENTS across Warwickshire are being encouraged to have their say on a new strategy designed to help nature and wildlife flourish across the county.

Warwickshire County Council, working with the Warwickshire, Coventry, and Solihull Local Nature Partnership, has developed a draft Local Nature Recovery Strategy (LNRS).

And now WCC is asking for feedback on the draft, which outlines key priorities for nature recovery and identifies where on-the-ground actions will be most effective.

The strategy – a requirement of the 2021 Environment Act – will be used by local authorities to inform planning strategies and incentivise habitat creation. It aims to create a more resilient network for nature across Warwickshire by targeting actions to areas where they will have the greatest impact.

The LNRS will cover the five districts and boroughs of North Warwickshire, Nuneaton and Bedworth, Rugby, Stratford, and Warwick.

WCC environment spokesperson Coun Darren Cheshire said: "Nature in the UK is in serious decline, and we all have a part to play in reversing this trend. The Local Nature Recovery Strategy is a vital step in creating a healthier, more connected environment for both our wildlife and our communities."

"We have used feedback from our initial engagement to develop this draft, and now we need your help to ensure we have identified the right priorities and locations for action. Your views are crucial to making this strategy a success, so please take part in the consultation and let us know what you think."

Visit [ask.warwickshire.gov.uk/bi/lnrs/](http://ask.warwickshire.gov.uk/bi/lnrs/) to take part in the consultation, which ends on November 2.

# Summertime was filled with butterflies

BUTTERFLIES were out and about in force in Warwickshire this summer.

More than 2,000 residents took part in The Big Butterfly Count across Warwickshire, spotting 29,151 butterflies and day-flying moths during the three weeks. On average, butterfly spotters saw just under ten butterflies and moths per count, a 59 per cent increase compared to 2024, with the Large White the most spotted.

And while the numbers are a vast improvement compared to 2024's, the charity Butterfly Conservation has warned urgent measures were still needed to reverse long-term decline.

The sunniest spring and hottest summer ever recorded in the UK provided good weather conditions for butterflies after 2024's record-breaking lows.

But the results from the UK-wide survey show that it was definitely not a bumper summer for our beleaguered butterflies.

Between July 18 and August 10, over 125,000 citizen scientists got involved in the count across the UK – more than ever before – and recorded 1.7 million butterflies and moths, with the top five species being Large White, Small White, Gatekeeper, Red Admiral and Meadow Brown.

On average, spotters recorded just over ten butterflies during each 15-minute count. While a marked improvement on last summer's record low of just seven, it is only broadly average by modern standards, and has done little to reverse longer-term declines.

Butterflies need two things to thrive – good weather and a healthy environment.

Dr Richard Fox, head of science at



The Large White was most spotted butterfly in Warwickshire during The Big Butterfly Count. Picture Creative Commons Licence.

Butterfly Conservation, warn "We may feel like we've seen lots of butterflies this summer, but that's only because last year was so awful."

"Last summer's results were the lowest we've seen and a stark warning that many of our common butterfly species are facing significant pressure from challenges linked to habitat loss, climate change and pesticide use."

"Whilst we've seen noticeably more butterflies during 2025's Big Butterfly Count, the figures suggest it's actually been a pretty average year for them by modern standards."

"The 15-year Big Butterfly Count trends show that more than twice as many widespread species have declined significantly than have increased. And, while most species had a better than average summer, one-third of species fared poorly even in the generally beneficial weather."

"There remains a need for us to take urgent action to support our butterfly populations, including by improving the environment in which they live, restoring habitats and reducing pesticide use. Until we do these things we are unlikely to see a great recovery in butterfly numbers, regardless of how much the sun shines."

## Questions about care? We can help

We know moving into residential care is an emotional and difficult decision with lots to think about.

With over 30 years' experience, we can help you navigate the process of finding the right care home, so that you feel confident about the decision you make – whether that's choosing a WCS Care home, or one outside our group that's more suited to your needs.

If you've got questions about care, or one of our care homes, our Trusted Advisors can help.



Philip Rainsford



Drovers House, Rugby

☎ 07802 728447

✉ [p.rainsford@wcs-care.co.uk](mailto:p.rainsford@wcs-care.co.uk)



Westlands, Rugby Dewar Close, Rugby

☎ 07802 728443

✉ [j.rugg@wcs-care.co.uk](mailto:j.rugg@wcs-care.co.uk)



Josephine Rugg

# Gardeners asked to help stop the spread of Japanese Knotweed

**EXPERTS from a national trade body are asking gardeners in the Midlands to understand the top three steps they can take to help prevent the spread of non-native plants such as Japanese Knotweed.**

The Property Care Association (PCA) says home gardeners can play a vital role in protecting their properties from Invasive Non-Native Plants (INNP) which can overrun gardens, damage driveways and spread to neighbouring homes.

The PCA's Invasive Weed Control Group provides remediation advice to homeowners as well as setting out best practice and standards for specialist surveyors who work alongside construction, landscaping and property professionals.

Daniel Docking, Technical Manager of the PCA's Invasive Weed Control Group, said: "While experienced gardeners have a keen eye for plant species, there are many plant families, such as gunnera, rhododendron and bamboo, that have ornamental and invasive varieties which can be confusing.

"As part of a recent government consultation, we've called for better plant labelling to help householders understand what they are buying and for nurseries and suppliers to adopt Biosecurity Management Plans to help ensure businesses are working to reduce the risk of



Japanese Knotweed can overrun gardens, damage driveways and spread to neighbouring homes.

invasive plants spreading through horticultural pathways."

Three key steps gardeners

can take to reduce the spread of INNPs:

### Know your nursery

Chat to the team at your local nursery or garden centre. Ask about their labelling systems and any steps they take to highlight invasive species. Many popular ornamental plants such as montbretia and Virginia creeper are regulated by Schedule 9 of the Wildlife and Countryside Act 1981 which prohibits the release of any animal or plant species into the wild.

### Seek support

There are a number of pathways by which INNPs can take root in your property. Keen-eyed gardeners who spot an invader are often the first line of defence in ensuring the issue is dealt with quickly and effectively.

It's essential to know which plants you can safely tackle yourself and when to call in an expert, such as a member of PCA's Invasive Weed Control Group. Some species, such as Japanese Knotweed, should always be dealt with by a professional.

### Watch your waste

Small fragments of INNPs, any seeds or rhizomes left in the soil can cause invasive species to reap-

pear. In some cases, contaminated soil will need to be disposed of and has limited scope for reuse or recycling.

Talk to any contractors or waste disposal companies to ensure that contaminated soil is disposed of in a way that prevents further spread.

Alongside campaigning for better biosecurity and labelling to aid consumers, the PCA is calling on the government to create incentives for low environmental impact remediation methods that avoid landfill and help prevent the environmental and economic harms caused by the spread of INNPs.

PCA Chief Executive Sarah Garry said: "We are seeing increasing evidence that waste soil containing invasive plant material is being diverted to quarry infill or land reclamation schemes rather than landfill.

"We believe there are solutions that combine environmental ambition with real-world deliverability and we're asking the Government to consider creating incentives to promote innovation and investment in research and development.

"Gardeners and homeowners have a key role to play in asking contractors about the responsible and compliant disposal of contaminated soil as well as demonstrating demand for improved plant labelling to help remove horticultural pathways for INNPs."



## BERKSWELL CHURCH OF ENGLAND VOLUNTARY AIDED PRIMARY SCHOOL



We offer:

- An outstanding EYFS provision (OFSTED 2022).
- Superb purpose built facilities with excellent resources.
- High-quality teacher led provision across the day.
- Nursery setting from 8.50 am to 3.20 pm.
- 30 place morning Nursery.
- Afternoon wraparound availability.
- Before and after school provision (7.30 am to 8.50 am and 3.20 pm to 6.00 pm).
- A beautiful village location.

## Nursery Open Mornings

9th October 9:30am  
6th November 9:30am

Visit our website to register your interest  
[www.berkswellschool.org.uk](http://www.berkswellschool.org.uk)

Church Lane, Berkswell, CV7 7BJ

# Just for Pets



Just for Pets, Leamington Shopping Park, Tachbrook Park Dr, Leamington Spa CV34 6RH  
(next to M&S)

Just for Pets, Arena Shopping Park, Rowley's Green, Coventry CV6 6AS (next to M&S)

Just for Pets, Horeston Grange Shopping Centre, Nuneaton CV11 6GU (next to Farmfoods)

[www.justforpets.co.uk](http://www.justforpets.co.uk)

# When does independence day arrive for region's children?

by Ash Clark

A STUDY conducted this summer has revealed the most common ages where children in the UK and the West Midlands gain their independence.

The study, conducted by label manufacturer My Nametags, focused on child development and data provided by parents about the kind of activities and responsibility their children were given and at which ages.

The research found 13 to be the most popular age when parents granted their children more trust and allowed them to be increasingly unrestrained.

Children who are 13 are likely to experience new freedom which may come in the form of being able to apply make-up, being left home alone and being permitted to have their own social media accounts.

The research data provides evidence that suggests there are differences between children who live in the city and children who live in more rural areas.

When discussing playing outside, parents said children in rural areas were more likely to be allowed out at age 11 but youngsters from city areas had

to wait another year.

The study also shows a split between the UK and the West Midlands.

Children in the West Midlands are granted some freedoms later than others, including babysitting a sibling and going on public transport alone, whereas in other areas in the UK, these liberties are granted at 13, not 14.

Other activities 13-year-olds can do in the West Midlands, according to the research, include using the Internet without supervision, having a social media account, wearing make-up and having a bank card.

A total of 80 per cent of parents quizzed said, while they did grant permission for these activities, they were concerned about the risks posed to unsupervised children on the Internet, such as online bullying and 'predators'.

Mobile phones and online habits are most likely to lead to regret from parents about their children's access to the Internet.

Some said they generally felt they had been pressured by others to let their children have an online presence.

One in six parents felt as though they had been put in an awkward position to grant independence sooner than they wanted to by other adults.

However, more than half of

parents felt more comfortable allowing their children to have phones for safety outside of the home and 75 per cent of adults wanted to give their children more individualism the same time or younger than they were given it themselves.

### Children in the region

At 11, children in the West Midlands commonly attend their first sleepover and, at 12, have a mobile phone, walk to school alone, go to the local shop on their own and be responsible for a pet.

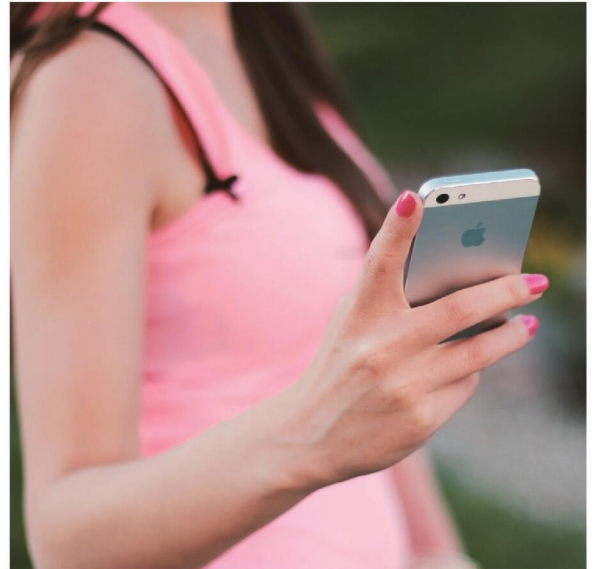
At 13, many of the region's youngsters use the Internet without supervision, have a bank account and card, stay home alone, gain access to social media and wear make-up.

At 14, children are often permitted to go to town with friends, look after a sibling and use public transport alone.

And at 15, many children go on holiday with friends and try alcohol for the first time.

The managing director at My Nametags, Lars B. Andersen, said "We were interested to find out more about attitudes towards independence among UK families.

"Granting a child independence is one of the most challenging aspects of parenthood.



"We hope this research makes parents feel less alone as they embark on this journey and offers some useful insight to help them make the right decision for their family."

Visit: [mynametags.com](http://mynametags.com) for more on My Nametags.

The study revealed the ages at which children are given more responsibilities and privileges. s

## Check out our E-Editions!

**Coventry Observer** .co.uk

**Upgraded route set to improve**

Gain Much Needed Extra Space With Our New Office For Your Family And Friends

**Windows Plus**

Windows | Doors | Conservatories | Porches | Screens & Soffits

02476 238222

[www.windows-plus.co.uk](http://www.windows-plus.co.uk)

**Rugby & Lutterworth Observer**

**REQUIRE CHAIR**

**Izzy di her to**

**DRIVES**

Are you looking to improve your driveway?

0800 302259 | 07773 91152 | [www.drives4u.co.uk](http://www.drives4u.co.uk)

**Leamington Observer**

**Homes to a re**

**DRIVES**

Are you looking to improve your driveway?

0800 302259 | 07773 91152 | [www.drives4u.co.uk](http://www.drives4u.co.uk)

[www.coventryobserver.co.uk/editions](http://www.coventryobserver.co.uk/editions)

[www.rugbyobserver.co.uk/editions](http://www.rugbyobserver.co.uk/editions)

[www.leamingtonobserver.co.uk/editions](http://www.leamingtonobserver.co.uk/editions)

The same paper you love on your **mobile, tablet and computer**

#ALSLetsMe

www.arnoldlodge.com



# ARNOLD LODGE

4-18 yrs Co-educational Independent Day School



# ALS Lets ME ACHIEVE

What will your child be?



**JOIN US AT OUR OPEN DAY  
ON SATURDAY 27TH SEPTEMBER  
10:00AM - 1:00PM**



**YEAR 7  
ASSESSMENT DAY  
TUESDAY 7TH OCTOBER**

 01926 778050

 [admissions@arnoldlodge.com](mailto:admissions@arnoldlodge.com)

 15-17 Kenilworth Rd, Leamington Spa, Warwickshire CV32 5TW

# SUDOKU

Complete the grid so that every row, every column and every 3 x 3 box contains every digit from 1 to 9.

## EASY

|   |   |   |   |   |   |   |   |   |
|---|---|---|---|---|---|---|---|---|
| 1 | 6 | 3 |   | 4 |   |   |   | 9 |
|   | 9 |   | 1 |   | 2 |   | 3 | 6 |
|   |   |   | 6 | 9 | 4 |   |   |   |
| 9 |   |   |   |   | 5 |   | 1 | 8 |
|   |   | 1 |   | 8 |   | 5 |   |   |
| 7 | 8 |   | 3 |   | 1 |   |   | 4 |
|   |   | 9 |   |   | 8 |   |   |   |
|   | 1 |   | 7 | 4 |   |   | 6 | 3 |
|   |   | 8 |   |   |   | 9 | 7 | 5 |

## HARD

|   |   |   |   |   |  |   |   |   |
|---|---|---|---|---|--|---|---|---|
| 5 |   | 2 |   | 3 |  |   |   | 9 |
| 8 | 6 |   | 9 |   |  |   |   |   |
|   |   |   | 1 | 2 |  | 8 |   |   |
|   |   |   |   | 7 |  |   |   | 9 |
|   |   | 1 |   |   |  | 6 |   |   |
| 2 |   |   | 5 |   |  |   |   |   |
|   | 2 |   | 3 | 5 |  |   |   |   |
|   |   |   |   | 1 |  | 6 | 3 |   |
|   | 3 |   | 9 | 1 |  |   | 7 |   |

# PATHFINDER

Beginning with the top highlighted letter, follow a continuous path of words associated with the given subject. The trail goes through each letter once, twisting up, down and sideways, but never diagonally.

## Newsreaders

**J** U C T P E T N R O R T P E R  
 O S H E A G E O P B E S E D M  
 H N H C M A R S P I O T D S O  
 T T E N U N S I A R N H R M T  
 Y T H Y G E S O L E G U A U R  
 C A E N D Y H N S A N W W A N  
 N E W M I R P Y H U M E D G H  
 A N N A H U O S T R U R U G A  
 G I F R L S A S O R I N A N N  
 E D D E A H I N P K S H C I V  
 A L B U R S I M H H T R T I A  
 S A R E N M B D I E W O O R D  
 T A I T T O R L A R A R I H E  
 C U A N F Y A O N R O E T S R  
 E R B O I B D D C M V E R Y B

Solutions opposite

# CROSSWORD

|    |   |    |    |    |    |    |    |    |  |    |
|----|---|----|----|----|----|----|----|----|--|----|
| 1  | 2 |    | 3  | 4  |    | 5  |    | 6  |  | 7  |
|    |   |    |    |    |    |    |    | 8  |  |    |
| 9  |   | 10 |    |    |    |    |    |    |  |    |
|    |   |    |    |    |    |    |    |    |  |    |
| 11 |   |    |    |    |    |    | 12 |    |  |    |
|    |   |    |    |    |    |    |    |    |  |    |
| 13 |   |    | 14 |    |    | 15 |    |    |  |    |
|    |   |    |    |    |    |    |    |    |  |    |
| 17 |   |    |    |    | 16 |    |    |    |  |    |
|    |   |    |    |    |    | 18 |    | 19 |  |    |
|    |   |    |    |    |    |    |    |    |  |    |
|    |   | 20 |    |    |    |    |    |    |  | 21 |
| 22 |   |    |    |    |    |    |    |    |  |    |
|    |   |    |    | 23 |    |    |    |    |  |    |

## ACROSS

- Fleeting (9)
- Be in debt to (3)
- Demolition (11)
- Act of contrition (7)
- Perfect (5)
- Stirred up (6)
- Assert (6)
- Rub out (5)
- Brave (7)
- Lying between (11)
- Deed (3)
- Release (9)

## DOWN

- Regret (3)
- Temptress (5)
- Shun (6)
- Trifling (7)
- Ally (11)
- Remember (9)
- Oddity (11)
- Eternal (9)
- Built (7)
- Turns aside (6)
- Get to know (5)
- Constantly find fault with (3)

Scribble pad

# LADDER

Using the clues provided, fill in each step of the ladder with a new word, changing one letter at a time.

- Break
- Cleanser
- Saturate
- Foot garment
- Unwell



# NINER

Each number from 1 to 9 represents a different letter. Solve the clues and insert the letters in the appropriate squares to discover a word which uses all nine letters.

- 84669126 gives a poet;
- 43728 gives a second poet;
- 573826 gives a third poet.

|   |   |   |   |   |   |   |   |   |
|---|---|---|---|---|---|---|---|---|
| 1 | 2 | 3 | 4 | 5 | 6 | 7 | 8 | 9 |
|---|---|---|---|---|---|---|---|---|

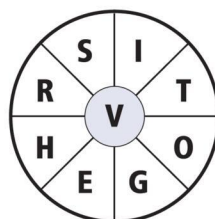
# CODEWORD

This puzzle has no clues. Instead, every number printed in the grid represents a letter, with the same number always representing the same letter. For example, if 8 turns out to be a V, you can write in V wherever a square contains 8. Using your knowledge of words, complete the puzzle.

|   |    |    |    |    |    |    |    |    |    |    |    |    |    |    |    |
|---|----|----|----|----|----|----|----|----|----|----|----|----|----|----|----|
|   |    | 26 |    | 21 |    | 6  |    |    | 21 |    | 12 |    |    |    |    |
| A |    |    |    |    |    |    |    |    |    |    |    |    |    |    |    |
| B | 11 | 7  | 19 | 15 |    | 16 | 15 | 24 | 13 | 4  | 20 |    | 18 |    |    |
| C |    |    |    |    |    |    |    |    |    |    |    |    |    |    |    |
| D |    | 4  |    |    | 16 | 4  | 13 |    |    | 7  |    | 15 | 1  | 4  |    |
| E |    |    |    |    |    |    |    |    |    |    |    |    |    |    |    |
| F |    |    | 21 |    |    | 7  |    | 3  | 25 | 10 | 5  |    | 25 | 7  |    |
| G |    |    |    |    |    |    |    |    |    |    |    |    |    |    |    |
| H | 17 | 15 | 14 | 20 | 7  |    |    | 15 |    |    |    |    |    | 26 |    |
| I |    |    |    |    |    |    |    |    |    |    |    |    |    |    |    |
| J |    | 12 |    |    |    | 2  | 13 | 3  | 16 | 8  | 6  | 10 | 21 | 23 |    |
| K |    |    |    |    |    |    |    |    |    |    |    |    |    |    |    |
| L |    | 7  |    |    |    |    | 15 |    | 3  |    | 4  |    |    | 3  |    |
| M |    |    |    |    |    |    |    |    |    |    |    |    |    |    |    |
| N | 6  | 10 | 24 | 6  | 16 | 6  | 13 | 4  | 26 |    |    |    |    | 7  |    |
| O |    |    |    |    |    |    |    |    |    |    |    |    |    |    |    |
| P | 10 |    |    |    |    |    |    |    | 11 |    | 26 | 19 | 6  | 24 | 15 |
| Q |    |    |    |    |    |    |    |    |    |    |    |    |    |    |    |
| R | 26 |    |    |    |    | 24 | 6  | 26 | 7  |    | 7  |    |    | 6  | I  |
| S |    |    |    |    |    |    |    |    |    |    |    |    |    |    |    |
| T | 15 | 8  | 9  |    |    | 15 |    |    | 22 | 7  | 20 |    |    | 21 | C  |
| U |    |    |    |    |    |    |    |    |    |    |    |    |    |    |    |
| V | 9  |    | 7  | 4  | 20 | 13 | 20 | 7  |    | 1  | 15 | 3  | 16 |    |    |
| W |    |    |    |    |    |    |    |    |    |    |    |    |    |    |    |
| X |    |    |    |    |    |    |    |    |    |    |    |    |    |    |    |
| Y |    |    |    |    |    |    |    |    |    |    |    |    |    |    |    |
| Z |    |    |    |    |    |    |    |    |    |    |    |    |    |    |    |

# WORDWHEEL

You have 10 mins to find as many words as possible using the letters in the wheel. Each must use the hub letter and at least 3 others. Letters may be used only once. You cannot use plurals, foreign words or proper nouns. There is at least one 9-letter word to be found.

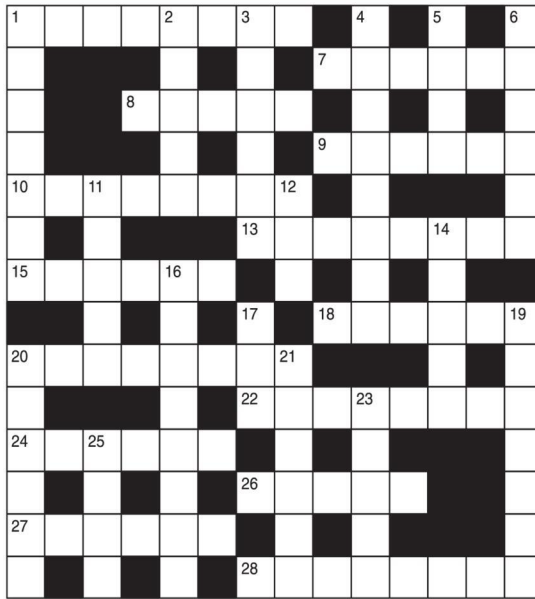


How you rate  
 15 words: average  
 20 words: good  
 25 words: very good  
 30 or more: excellent.

# GENERAL KNOWLEDGE CROSSWORD

## ACROSS

- 1 The seat of the Lord Speaker in The House of Lords (8)
- 7 Former monetary unit of Portugal (6)
- 8 Decomposed organic matter in the soil (5)
- 9 The west wind (6)
- 10 Tapering pillars, like those known as Cleopatra's Needles (8)
- 13 Propeller of an aircraft (8)
- 15 Annual plant related to chicory, used in salads (6)
- 18 See 2 Down
- 20 Another name for cranesbill (8)
- 22 Painting by Picasso, generally regarded as his masterpiece (8)
- 24 Compound plant, usually grey or yellow, growing on rocks and trees (6)
- 26 Ancient British tribe led by Boudicca (5)
- 27 Very early chipped stone implement (6)
- 28 The study of animal behaviour (8)



## DOWN

- 1 See 12 Down
- 2 & 18 Across Kingdom of south-western Asia, capital Riyadh (5,6)
- 3 Period of play in polo (6)
- 4 One who estimates the value of property for taxation purposes (8)
- 5 See 12 Down
- 6 Surname of the traveller and writer whose books include Lavengro and Romany Rye (6)
- 11 An office-bearer in the Presbyterian Church (5)
- 12, 5 & 1 Down Novelist famous for works such as Mr Perrin and Mr Trill and The Herries Chronicles (3,4,7)
- 14 Jewish expounder or doctor of the law (5)
- 16 A blood feud, as in Corsica and parts of Italy (8)
- 17 Squat-faced small breed of dog (3)
- 19 Originally, Plato's school of philosophy (7)
- 20 & 25 Down Image made by Aaron during the absence of Moses at Mount Sinai (6,4)
- 21 The capital of Oman (6)
- 23 Piece of music in which one section recurs intermittently (5)
- 25 See 20 Down

# SOLUTIONS

ACROSS: 1 Woolsock; 7 Escudo; 8 Humus; 9 Zephyr; 10 Obelisks; 13 Aircraft; 15 Endive; 18 Arabia; 20 Geranium; 22 Saund; 3 Chukka; 4 Assessor; 5 Hugh; 6 Borrow; 28 Ethology; DOWN: 1 Walpole; 2 Saund; 3 Chukka; 4 Assessor; 5 Hugh; 6 Borrow; 11 Elder; 12 Sir; 14 Rabb; 16 Vendetta; 17 Pug; 19 Academy; 20 Golden; 21 Muscat; 23 Rondo; 25 Calif.

## General Knowledge Crossword

CROSSWORD: 1 Transient; 8 Owe; 9 Destruction; 11 Penance; 12 Ideal; 13 Roused; 15 Allego; 17 erase; 18 Valiant; 20 Interject; 22 Act; 23 Disengage; Down: 2 Rue; 3 Siren; 4 Eschew; 5 Trivial; 6 Confederate; 7 Recollect; 10 Singularity; 11 Perpetual; 14 Erected; 16 Avert; 19 Learn; 21 Neg.

## Crossword

OVERSIGHT: John Sucher, Peter Simons, Angela Rippon, Robert Peston, Huw Edwards, Dermot Mulroney, Victoria Perleyshire, Trevor McDonald, Mishal Husain, Sophie Raworth, Krishnan Guru-Murthy, Niner: Sophie Ridge, Naga Munchetty, Cathy Newman, Fred Dineage, SOLEMNITY: Alastair Burnet, Tom Bradby, Fiona Bruce.

## Wordwheel Pathfinder

1=M, 2=G, 3=L, 4=U, 5=X, 6=L, 7=A, 8=F, 9=L, 10=N, 11=W, 12=P, 13=O, 14=B, 15=E, 16=D, 17=Z, 18=Q, 19=K, 20=R, 21=C, 22=J, 23=H, 24=Y, 25=Y, 26=S

## Ladder Codeword

|   |   |   |   |   |   |   |   |   |
|---|---|---|---|---|---|---|---|---|
| 6 | 3 | 4 | 2 | 9 | 8 | 1 | 5 | 7 |
| 9 | 5 | 8 | 7 | 4 | 1 | 2 | 6 | 3 |
| 1 | 2 | 7 | 3 | 6 | 5 | 9 | 4 | 8 |
| 2 | 9 | 6 | 5 | 8 | 3 | 4 | 7 | 1 |
| 7 | 8 | 1 | 4 | 2 | 9 | 6 | 3 | 5 |
| 3 | 4 | 5 | 6 | 1 | 7 | 8 | 2 | 9 |
| 4 | 7 | 9 | 1 | 5 | 2 | 3 | 8 | 6 |
| 8 | 6 | 3 | 9 | 7 | 4 | 5 | 1 | 2 |
| 5 | 1 | 2 | 8 | 3 | 6 | 7 | 9 | 4 |

Hard

|   |   |   |   |   |   |   |   |   |
|---|---|---|---|---|---|---|---|---|
| 6 | 4 | 8 | 2 | 1 | 3 | 9 | 7 | 5 |
| 5 | 1 | 2 | 7 | 9 | 4 | 8 | 6 | 3 |
| 3 | 7 | 9 | 5 | 6 | 8 | 1 | 4 | 2 |
| 7 | 8 | 5 | 3 | 2 | 1 | 6 | 9 | 4 |
| 4 | 3 | 1 | 9 | 8 | 5 | 2 | 7 | 6 |
| 9 | 2 | 6 | 4 | 7 | 3 | 5 | 3 | 1 |
| 2 | 5 | 7 | 6 | 3 | 9 | 4 | 8 | 1 |
| 8 | 9 | 4 | 1 | 5 | 2 | 7 | 3 | 6 |
| 1 | 6 | 3 | 8 | 4 | 7 | 2 | 5 | 9 |

Easy Sudoku



**It's time to Like, Follow & Subscribe**

Don't be LEFT BEHIND.....

- CoventryObserver
- LeamingtonObserver
- RugbyObserver

- @CovObserverNews
- @LeamObs
- @RugbyObserver

- CovObserver
- Leamington.Observer
- Rugby.Observer

**BREAKING NEWS**  
**WHAT'S ON**  
**SPORT**  
**INTERVIEWS**

# Check out our E-Editions!

**Coventry Observer** .co.uk

Thu, 26th Sep 2025

## Upgraded route set to improve



**Gain Much Needed Extra Space With Our New Offer For Your Family And Friends**

**Windows Plus**

Windows | Doors | Conservatories | Porches | Fascias & Soffits

CALL TODAY FOR A QUOTE ON OUR BEST PRICE 02476 230222

WWW.WINDOWS-PLUS.CO.UK

The Coventry Observer brings you the news free of charge every week

**Rugby & Lutterworth Observer**

Thu, 26th Sep 2025

## Izzy did her top



**DRIVES4U**

Are you looking to improve your driveway?

We can provide you with a free quote for your driveway in Coventry, Birmingham, Leeds

5 Year Guarantee

• We've designed and built just about every shape and size of driveway and patio you can imagine, so we will not be phased by your project.

• We strive to achieve 100% satisfaction and unlike other driveway companies, we do not provide anything but the best.

• Give us a call and you could save up to £1000

Tel: 0800 3032559 | Mob: 07773 911552 | www.drives4u.co.uk

Championing the needs of Rugby residents since 1991 and delivering the news to you every week

**Leamington Observer** Incorporating Warwick, Whitnash and Kenilworth

Thu, 26th Sep 2025

## Homes to a re



**DRIVES4U**

Are you looking to improve your driveway?

We can provide you with a free quote for your driveway in Coventry, Birmingham, Leeds

5 Year Guarantee

• We've designed and built just about every shape and size of driveway and patio you can imagine, so we will not be phased by your project.

• We strive to achieve 100% satisfaction and unlike other driveway companies, we do not provide anything but the best.

• Give us a call and you could save up to £1000

Tel: 0800 3032559 | Mob: 07773 911552 | www.drives4u.co.uk

Keep up with all the latest news, sport and entertainment from around the area at www.leamingtonobserver.co.uk

[www.coventryobserver.co.uk/editions](http://www.coventryobserver.co.uk/editions)  
[www.rugbyobserver.co.uk/editions](http://www.rugbyobserver.co.uk/editions)  
[www.leamingtonobserver.co.uk/editions](http://www.leamingtonobserver.co.uk/editions)

The same paper you love on your **mobile, tablet** and **computer**



Warwickshire County Council

ROAD TRAFFIC REGULATION ACT 1984

Warwickshire County Council has made the following Temporary Traffic Orders:

D35660 FROBISHER ROAD, RUGBY

Order Effect: Road closed to vehicular traffic from Cunningham Way North to Freemantle Road.

Reason for Order: Carriageway patching and associated works, 09.30hrs-15.00hrs.

Order Commences: 1 October 2025 for up to 18 months.

Anticipated Completion: 1 October 2025.

Access & Diversion: Freemantle Road, Blackwood Avenue, Cunningham Way and vice versa.

Contractor: Balfour Beatty, Tel: 03452 415 302.

PUBLIC FOOTPATH AT CHAMBERLAIN ROAD, HILLMORTON, RUGBY

Order Effect: Footpath closed to all traffic.

Reason for Order: Use of cherry picker for telecom works, closed 09.00hrs-15.00hrs.

Order Commences: 1 October 2025 for up to 6 months.

Anticipated Completion: 1 October 2025.

Access & Diversion: Chamberlain Road and vice versa.

Contractor: Road Traffic Solutions Ltd, Tel: 01724 848 246.

CHAMBERLAIN ROAD, HILLMORTON, RUGBY

Order Effect: Road closed to vehicular traffic.

Reason for Order: Use of cherry picker for telecom works, closed 09.00hrs-15.00hrs.

Order Commences: 1 October 2025 for up to 18 months.

Anticipated Completion: 1 October 2025.

Access & Diversion: Chamberlain Road and vice versa.

Contractor: Road Traffic Solutions Ltd, Tel: 01724 848 246.

RUGBY WESTERN RELIEF ROAD, RUGBY

Order Effect: Road closed to vehicular traffic. In addition, traffic will be prohibited from making a Right Turn and a Left Turn from Lawford Road on to The Rugby Western Relief Road.

Reason for Order: To enable works for handrail replacement for renewal to the structure, overnight 22.00hrs-06.00hrs.

Order Commences: 29 September 2025 for up to 18 months.

Anticipated Completion: 5 October 2025.

Access & Diversion: Rugby Western Relief Road, Lawford Road, Corporation Street, Evreux Way, Newbold Road, Leicester Road and vice versa.

Contractor: CML, Tel: 01652 656 291.

Warwickshire County Council proposes to make the following Temporary Traffic Orders:

A426 NEWBOLD ROAD (ACCESS ROAD ONLY), RUGBY

Order Effect: Road closed to vehicular traffic.

Reason for Order: For renewal of a boundary box and installation of a meter.

Order Commences: 11 October 2025 for up to 18 months.

Anticipated Completion: 12 October 2025.

Access & Diversion: No diversion available.

Contractor: Chevron TM Ltd, Tel: 03300 080 820.

GRASMERE CLOSE, BROWNSOVER, RUGBY

Order Effect: Road closed to vehicular traffic.

Reason for Order: To enable duct laying works.

Order Commences: 16 October 2025 for up to 18 months.

Anticipated Completion: 16 October 2025.

Access & Diversion: There is no available diversion route.

Contractor: M J Quinn, Tel: 01543 547 118.

CORONATION ROAD, CHURCH LAWFORD

Order Effect: Road closed to vehicular traffic.

Reason for Order: Works to replace existing pole.

Order Commences: 16 October 2025 for up to 18 months.

Anticipated Completion: 16 October 2025.

Access & Diversion: Coronation Road, Coventry Road, Limestone Hall Lane, Ling Lane and vice versa.

Contractor: Core Highways, Tel: 03300 169 688.

LITTLE LONDON LANE, NEWTON

Order Effect: Road closed to vehicular traffic.

Reason for Order: Works to lay approx 250 meters of duct in the carriageway.

Order Commences: 15 October 2025 for up to 18 months.

Anticipated Completion: 28 October 2025.

Access & Diversion: No diversion available.

Contractor: Callan Connect, Tel: 01213 275 167.

THE PADDOCK, NEWTON

Order Effect: Road closed to vehicular traffic.

Reason for Order: Works to lay approx 100m of duct in the footway and carriageway.

Order Commences: 13 October 2025 for up to 18 months.

Anticipated Completion: 17 October 2025.

Access & Diversion: No diversion available.

Contractor: Callan Connect, Tel: 01213 275 167.

BIGGIN HALL LANE, THURLASTON

Order Effect: Road closed to vehicular traffic across the entrance of Biggin Hall to Meadowcroft.

Reason for Order: To safely enable the laying of approx 105 meters of duct in the verge.

Order Commences: 14 October 2025 for up to 18 months.

Anticipated Completion: 16 October 2025.

Access & Diversion: No diversion available.

Contractor: Callan Connect, Tel: 01213 275 167.

CHURCH LANE, THURLASTON

Order Effect: Road closed to vehicular traffic.

Reason for Order: Works to lay approx 70 meters of duct in the carriageway.

Order Commences: 13 October 2025 for up to 18 months.

Anticipated Completion: 16 October 2025.

Access & Diversion: No diversion available.

Contractor: Callan Connect, Tel: 01213 275 167.

SAWBIDGE ROAD, SAWBRIDGE

Order Effect: Road closed to vehicular traffic.

Reason for Order: To enable small hydrant installation works.

Order Commences: 15 October 2025 for up to 18 months.

Anticipated Completion: 17 October 2025.

Access & Diversion: Sawbridge Road, Main Street, Park Hill, Davenry Road, Shuckburgh Road, A425 Davenry Road, A425 Staverton Road, Leamington Way, Braunston Road, The Wharf, London Road, Moor Lane, Willoughby Road and vice versa.

Contractor: Chevron TM Ltd, Tel: 03300 080 820.

For all of the above temporary orders, pedestrian access to and egress from properties and land situated adjacent to the length of road to be closed will be maintained at all times. Vehicular access will be maintained where possible.

To report any problems with these works or for further details of our current & planned roadworks visit our website warwickshire.gov.uk/roadworksmap or call us 01926 412515.

S Duxbury, Director of Strategy, Planning & Governance, Shire Hall, Warwick CV34 4RL Date 26 Sept 2025

Classified

PUBLIC NOTICES



ROAD TRAFFIC REGULATION ACT 1984 - SECTION 14(1)(a)

THE A46 TRUNK ROAD (KENILWORTH, WARWICKSHIRE) (SLIP ROAD) (TEMPORARY PROHIBITION OF TRAFFIC) ORDER 2025

NOTICE IS HEREBY GIVEN that National Highways Limited (Company no. 9346363) has made an order on the A46 Trunk Road, at Kenilworth, in the County of Warwickshire, to enable bridge inspection works to be carried out.

The effect of the Order will be to close the slip road leading to the southbound carriageway of the A46, from its roundabout junction with the A452 Leamington Road, at Kenilworth.

The work will be carried out over one night between 22:00 hours and 06:00 hours and is expected to start on Sunday 28 September 2025. The Order will come into force on 26 September 2025.

Vehicles being used for police, fire and rescue authority or ambulance purposes, and vehicles being used in connection with the works or for winter maintenance purposes will be exempt from the closure. A diversion route via the Stivalch Interchange will be signed.

For further information please contact Nicola Welsh a project manager on behalf of National Highways Limited on 01132 775 360.

Karen Eustace, an officer in National Highways Limited.

National Highways Limited (Company no. 9346363) registered office: Bridge House, Walnut Tree Close, Guildford, GU1 4LZ. A company registered in England and Wales.

PUBLIC NOTICES

Warwickshire County Council

ROAD TRAFFIC REGULATION ACT 1984

Warwickshire County Council has made the following Temporary Traffic Orders:

OS4 ROCK LANE, CORLEY

Order Effect: Road closed to vehicular traffic from the Y junction of Rock Lane to the junction of Tamworth Road.

Reason for Order: Carriageway patching and associated works, 08.00hrs-16.00hrs.

Order Commences: 29 September 2025 for up to 18 months.

Anticipated Completion: 29 September 2025.

Access & Diversion: Tamworth Road, Rock Lane and vice versa.

Contractor: Balfour Beatty, Tel: 03452 415 302.

For all of the above temporary orders, pedestrian access to and egress from properties and land situated adjacent to the length of road to be closed will be maintained at all times. Vehicular access will be maintained where possible.

To report any problems with these works or for further details of our current & planned roadworks visit our website warwickshire.gov.uk/roadworksmap or call us 01926 412515.

S Duxbury, Director of Strategy, Planning & Governance, Shire Hall, Warwick CV34 4RL. Date 26 Sept 2025

Goods Vehicle Operator's Licence

Mr B G Newman trading as NEWMANS REMOVALS (STORAGE) LTD of 26 MANDERLEY CLOSE, COVENTRY, CV5 7NR is applying to add an operating centre to keep 2 goods vehicles and 0 trailers at 26 MANDERLEY CLOSE, COVENTRY, CV5 7NR

Owners or occupiers of land (including buildings) near the operating centre(s) who believe that their use or enjoyment of that land would be affected, should make written representations to the Traffic Commissioner at Quarry House, Quarry Hill, Leeds, LS2 7UE, stating their reasons, within 21 days of this notice.

Representors must at the same time send a copy of their representations to the applicant at the address given at the top of this notice. A Guide to Making Representations is available from the Traffic Commissioner's office.

Department for Transport TOWN AND COUNTRY PLANNING ACT 1990

The secretary of state hereby gives notice of the proposal to make an Order under section 247 of the above Act to authorise the stopping up of a length of Castle Mound Way at Rugby in the Borough of Rugby.

If the order is made, the stopping up will be authorised only to enable development as permitted by Rugby Borough Council under reference R22/0551.

Copies of the draft order and relevant plan will be available for inspection during normal opening hours at Rugby Borough Council, Town Hall, Evreux Way, Rugby, CV21 2RR in the 28 days commencing on 26 September 2025, and may be obtained, free of charge, from the Secretary of State (quoting NATTRAN/WMS/2476110) at the address stated below.

Any person may object to the making of the proposed order by stating their reasons in writing to the Secretary of State at nationalcasework@dtf.gov.uk or National Transport Casework Team, Tyneside House, Skinnerburn Road, Newcastle upon Tyne, NE4 7AR, quoting the above reference. Objections should be received by midnight on 24 October 2025. You are advised that your personal data and correspondence will be passed to the applicant/agent to enable your objection to be considered. If you do not wish your personal data to be forwarded, please state your reasons when submitting your objection.

N Crass, Casework Manager

Warwickshire County Council

ROAD TRAFFIC REGULATION ACT 1984

Warwickshire County Council has made the following Temporary Traffic Orders:

DEPPERS BRIDGE ROAD, HARBURY

Order Effect: Road closed to vehicular traffic.

Reason for Order: To safely enable tree surgery works.

Order Commences: 29 September 2025 for up to 18 months.

Anticipated Completion: 30 September 2025.

Access & Diversion: Deppers Bridge, Kineton Road, Station Road, Leamington Road, Southam Road, Ufton Road, Deppers Bridge Road and vice versa.

Contractor: Rofelo Forestry Ltd, Tel: 07534 615 362.

For all of the above temporary orders, pedestrian access to and egress from properties and land situated adjacent to the length of road to be closed will be maintained at all times. Vehicular access will be maintained where possible.

To report any problems with these works or for further details of our current & planned roadworks visit our website warwickshire.gov.uk/roadworksmap or call us 01926 412515.

S Duxbury, Director of Strategy, Planning & Governance, Shire Hall, Warwick CV34 4RL. Date 26 Sept 2025

Section 17 Licensing Act 2003: Application for a new Premises Licence 17VE: Reliance Food Wine Ltd Have Applied to Coventry City Council for a New Premises Licence for: Reliance Food & Wine, 245 Stony Stanton Road, Coventry CV1 4ER. Licensable activities and accompanying hours applied for are: Supply of Alcohol for Off Premises consumption: Mon-Sun 07:00-01:00. Any person who wishes to make a representation in relation to this application must give notice in writing of his/her representation by: 19th October 2025 stating the grounds for making said representation to Licensing Authority, The Council House, East Street Coventry CV1 5BR. OR email: licensing@coventry.gov.uk. The application may be viewed in the Register held at the above offices or online on www.coventry.gov.uk. It is an offence, under section 158 of the Licensing Act 2003, for anyone to knowingly or recklessly make a false statement in connection with an application and the maximum fine for which a person is liable on summary conviction for the offence is unlimited.

Goods Vehicle Operator's Licence

Network Transport Solutions Limited of 10, Basset Court, Loake Close, Grange Park, Northampton NN4 5EZ is applying to change an existing licence as follows: To add an operating centre to keep 10 goods vehicles and 0 trailers at Eddie Stebarts Ltd, Watling Street, Clifton Upon Dunsmore, Rugby, CV23 0AE.

Owners or occupiers of land (including buildings) near the operating centre(s) who believe that their use or enjoyment of that land would be affected, should make written representations to the Traffic Commissioner at Quarry House, Quarry Hill, Leeds, LS2 7UE, stating their reasons, within 21 days of this notice. Representors must at the same time send a copy of their representations to the applicant at the address given at the top of this notice. A Guide to Making Representations is available at www.gov.uk/government/publications/a-guide-to-making-representations-objections-and-complaints-goods-vehicle-operator-licensing.

TELEPHONE 01527 588688 FACSIMILE 01527 584371

PUBLIC NOTICES

Goods Vehicle Operator's Licence

PNJ Transport Ltd of 42 Broad Lane South, Wolverhampton, WV11 3RY is applying to change an existing licence as follows. To keep an extra Two goods vehicles and Two trailers at the operating centre at Sealand Group Ltd, Site 7, Bedworth Road, Coventry, CV6 6JR.

Owners or occupiers of land (including buildings) near the operating centre(s) who believe that their use or enjoyment of that land would be affected, should make written representations to the Traffic Commissioner at Quarry House, Quarry Hill, Leeds, LS2 7UE, stating their reasons, within 21 days of this notice.

Representors must at the same time send a copy of their representations to the applicant at the address given at the top of this notice. A Guide to Making Representations is available from the Traffic Commissioner's office.

PUBLIC NOTICES

Goods Vehicle Operator's Licence

Philip GR trading as Gray P SOT Limited of 20 Northampton Rd, Welford, NN6 6HP is applying for a licence to use Old Barn Farm, Swinford Rd, Lutterworth LE17 6DQ as an operating centre for 1 goods vehicle and 0 trailers.

Owners or occupiers of land (including buildings) near the operating centres who believe that their use or enjoyment of that land would be affected, should make written representations to the Traffic Commissioner at Quarry House, Quarry Hill, Leeds, LS2 7UE stating their reasons, within 21 days of this notice. Representors must at the same time send a copy of their representations to the applicant at the address given at the top of this notice. A Guide to Making Representations is available at: www.gov.uk/government/publications/a-guide-to-making-representations-objections-and-complaints-goods-vehicle-operator-licensing

PUBLIC NOTICES

Rugby Borough Council Town and Country Planning Act 1990 (as amended)

Application Number R25/0625

53, HILLMORTON ROAD, RUGBY, CV22 5AE

Proposed single-storey rear extension. This development may affect a Conservation Area

Application Number R25/0819

5, The Hastings, Olton Close, Burton Hastings, Nuneaton, Warwickshire, CV11 6XT

Erection of a new timber framed stables building with associated tack room and change of use from dwellinghouse (C3) to horticulture This development may affect a Public Right of Way

Members of the public may inspect copies of the application, the plans and documents submitted with it online at: www.planningportal.rugby.gov.uk or in an electronic form at Town Hall, Evreux Way, Rugby CV21 2RR between the hours of 9.00 am and 5.00 pm Monday to Friday until 17 October 2025. Please note a planning officer would not be present.

If you wish to make an appointment to discuss the application, please contact the case officer. Any person who wishes to make representation to the above mentioned Council about the applications should make them online - www.planningportal.rugby.co.uk (search for application number and select comment) - or in writing by that date to The Chief Officer Growth and Investment, Town Hall, Rugby, CV21 2RR.

If an application is determined by the Planning Committee, members of the public may have the opportunity to speak at the meeting. More details about public speaking are available from the Council or on-line at: www.rugby.gov.uk/speakingatplanning For householder or minor commercial applications, in the event of an appeal against a refusal of planning permission, deal with on the basis of representations in writing, any representations made will be sent to the Secretary of State, and there will be no further opportunity to comment at the appeal stage.

Nicola Smith Chief Officer - Growth and Investment MRTPI

PUBLIC NOTICES

LAURENCE STANLEY CLARKE (deceased) Pursuant to the Trustee Act 1925 any persons having a claim against or an interest in the Estate of the above named, late of 1 Moor House Cottages, Moor House Lane Coventry, CV4 8EG, who died on 27/07/2025, are required to send written particulars thereof to the undersigned on or before 27/11/2025, after which date the Estate will be distributed having regard only to the claims and interests of which they have had notice.

PUBLIC NOTICES

CHRISTINE EDITH MARY BROOKS (deceased)

Pursuant to the Trustee Act 1925 any persons having a claim against or an interest in the Estate of the above named, late of 22 Main Street Tyse Warwick, CV36 6SR, who died on 24/07/2025, are required to send written particulars thereof to the undersigned on or before 27/11/2025, after which date the Estate will be distributed having regard only to the claims and interests of which they have had notice.

PUBLIC NOTICES

NOEL MILES THOMPSON (deceased)

Pursuant to the Trustee Act 1925 any persons having a claim against or an interest in the Estate of the above named, late of Overseas House Care Home 12 Overseas Lane Rugby, CV22 6DT, who died on 24/07/2025, are required to send written particulars thereof to the undersigned on or before 27/11/2025, after which date the Estate will be distributed having regard only to the claims and interests of which they have had notice.

PUBLIC NOTICES

Warwickshire County Council

Application Number R25/0625

53, HILLMORTON ROAD, RUGBY, CV22 5AE

Proposed single-storey rear extension. This development may affect a Conservation Area

Application Number R25/0819

5, The Hastings, Olton Close, Burton Hastings, Nuneaton, Warwickshire, CV11 6XT

Erection of a new timber framed stables building with associated tack room and change of use from dwellinghouse (C3) to horticulture This development may affect a Public Right of Way

Members of the public may inspect copies of the application, the plans and documents submitted with it online at: www.planningportal.rugby.gov.uk or in an electronic form at Town Hall, Evreux Way, Rugby CV21 2RR between the hours of 9.00 am and 5.00 pm Monday to Friday until 17 October 2025. Please note a planning officer would not be present.

If you wish to make an appointment to discuss the application, please contact the case officer. Any person who wishes to make representation to the above mentioned Council about the applications should make them online - www.planningportal.rugby.co.uk (search for application number and select comment) - or in writing by that date to The Chief Officer Growth and Investment, Town Hall, Rugby, CV21 2RR.

If an application is determined by the Planning Committee, members of the public may have the opportunity to speak at the meeting. More details about public speaking are available from the Council or on-line at: www.rugby.gov.uk/speakingatplanning For householder or minor commercial applications, in the event of an appeal against a refusal of planning permission, deal with on the basis of representations in writing, any representations made will be sent to the Secretary of State, and there will be no further opportunity to comment at the appeal stage.

Nicola Smith Chief Officer - Growth and Investment MRTPI

PUBLIC NOTICES Keeping you up to date with all the latest information on Planning Proposals, Traffic Notices, Goods Vehicle Operator Licences, Licences To Sell Alcohol, Probate Notices.....

# Classified

TELEPHONE 01527 588688 FACSIMILE 01527 584371

## RECRUITMENT

**HOLY TRINITY CHURCH**  
STRATFORD-UPON-AVON  
HOLY TRINITY • ALL SAINTS LUDDINGTON • ST HELEN'S CLIFFORD CHAMBERS



### Parish Nurse Vacancy

**10 - 30 hours per week**  
**£16.50 per hour, £32,298 pro - rata**

This is an exciting opportunity for a NMC registered nurse to continue to develop a new ministry of holistic health support in the Parish of Stratford upon Avon, in collaboration with the Minister for Nurture and Outreach and the church Pastoral Team.

The Parish Nurse will be based at Holy Trinity Parish Centre and will work with existing church contacts in the community, to signpost clients to relevant NHS and community-based health services, to help the client to understand their own health and well - being needs, and to advocate for them.

Key to the role, the Parish Nurse will also be able to provide spiritual and prayer support to their clients, when requested, and will be a bridge between the Church and the community. As such, it is a genuine occupational requirement for the candidate to be a committed practicing Christian.

For more information:  
Contact: **01789 266316** or email: [hr@stratford-upon-avon.org](mailto:hr@stratford-upon-avon.org)  
Application packs can be found on the church website:  
<https://www.stratford-upon-avon.org/staff-vacancies>  
Closing date **Sunday 12th October 2025**



## SALES & WANTS

### MISCELLANEOUS

**BEDS** NEW Doubles £95 Singles £59 King size £159. Second hand doubles £49 Singles £29 Fridges £49 Freezers £59 Can deliver 07703 925662

**RECLINER CHAIR** electric rise & recline £169 Manual recline chair £60 High seated chair £40 Can deliver 07703 925662

**STANDARD** lamp plus ottoman free to collector 07796934404

**TRITON T80 SI 8.5kw** electric shower g.w.o. £30.00 Tel 07941298266

**SONY** Smart Engine VHS Video Recorder gwo £20.00 5 tread wooden step ladder £10.00 07941298266

**STIHL** long reach 30inch blade hedge cutter, vgc, recent service, (Warwick / Leamington area) £150. Tel 07967401319

**FLYMO** electric Leaf vac / blower for sale g/c. £25. 01788840581

**BT** cordless phone with answer machine and nuisance call blocker. Unused, in box £10 07733 126963

### WOODEN

Greenhouse 6x8/ £40 please phone 07790 378562

**SJP** Born Lovely 50ml EDP and 10ml EDP handbag size, new £12 07813 706 158 (Shirley area)

**BURGUNDY** red Converse pumps, size 8.5, mint condition, £18, Tel: 07813 706 158 (Shirley area)

**MANCHESTER** United red cap, size small / medium, brand new! £10. 07813 706 158 (Shirley area)

**CARAVAN** Aquaroll with handle, 40 litre, good condition. £30 07813 706 158 (Shirley area)

**HARRY** Potter figurine, new in box £10 07813 706 158 (Shirley area)

**COFFEE** machine Nescafe dolce gusta with coffee pods £25 - 07743 929558

**MURPHY** Richards Breadmaker as new £20 - 07743 929558

**NEW** beautiful gold traditional Victorian style bath taps. Never fitted. Cost a fortune. £30. 07840 809065

**TWO**, wing back grey chequered chairs new £250 Buyer collect 07903 106428

**FRUIT** bowls set of four, £10 Bromsgrove area 07805 931636

## CONSERVATORIES & GLAZING

### DOUBLE GLAZING REPAIRS

Locks, Hinges, Handles, Glass, Windows or Doors  
New Doors/Windows  
Also Supplied/Fitted  
**07973 200 623**

## DRIVEWAYS

### COVENTRY DRIVEWAYS

- Block paving • Slabs • Porcelain Tiles & Sandstone Kits
- Fencing • Gravel • Turf & Artificial Grass
- Decking, Steps and more

**7 Years Warranty on all projects**  
Payment only after completion  
**02476 274439 07740 101227**  
[www.spanglefish.com/coventrydriveways](http://www.spanglefish.com/coventrydriveways)

## HOME IMPROVEMENTS

### HANDY MAN

If you're looking for a fast and reliable service  
Then call Lenny

- Plastering • Plumbing • Fencing
- Gardening • Flooring • Kitchens
- Bathrooms • Carpentry • Flat pack furniture
- Tiling • Painting

**02476 443 996**  
**07794 784 266**  
NO VAT CHARGE



**GIVE A LOCAL EXPERT A CALL!**

## SERVICES

### S.W INSTALLATIONS

#### Kitchens & Bathrooms

**FREE DESIGN & QUOTATION**  
**QUALITY KITCHENS & BATHROOMS SUPPLIED & FITTED**  
**PLUMBING, CARPENTRY, TILING, WORKTOP & DOOR REPLACEMENT**  
(Supply & fit, supply only or fit only)  
**LOCAL TRADESMAN 20YRS EXPERIENCE**  
**NO JOB TOO SMALL**  
**01926 773386 or 07971 684 353**

## LOGS

### LOGS FOR SALE

**Mainly Ash**  
£120, £220, £390 loads delivered  
Builders bag of logs £120 delivered  
Card, cash or cheque payments taken  
Tel 07477 778536 or 07983 441818  
See load sizes at our website [www.rbtimberuk](http://www.rbtimberuk)

### NEED AN EXPERT?

You'll find loads of **LOCAL Experts** in our Classified pages.  
**GIVE THEM A CALL!**

## WANTED

**\*\*WANTED: Vinyl Records CDs Cassettes**  
Vintage or New \*\*  
Seeking classic rock, jazz, indie and rare finds. Cash paid  
Call or text: 07765 142354 Or 01527 893992  
Or email: [welston@live.com](mailto:welston@live.com)  
Paul (Albatross & Doomed Records)

### HOST FAMILIES WANTED

in Leamington Spa area  
for overseas students.  
Flexible stays, generous payment, cultural exchange.  
Contact us now!  
**07949 416801**  
[admin@stratfordhostfamilies.com](mailto:admin@stratfordhostfamilies.com)

### GOT A VACANCY TO FILL?

Contact Caroline or Kelly on  
**01527 588625 • 01527 588749**  
[caroline.birchhead@bullivantmedia.com](mailto:caroline.birchhead@bullivantmedia.com) | [kelly.taylor@bullivantmedia.com](mailto:kelly.taylor@bullivantmedia.com)

## ANNOUNCEMENTS

### FUNERAL DIRECTORS

#### Henry Ison & Sons Funeral Directors

Established 1907

Creating a funeral as unique as your Loved One  
We are here to support and guide you. Caring for families of all faiths.  
**24 Hour Personal Care**  
**02476 997 811**  
Branches in Coventry, Leamington Spa and Kenilworth

[henryison.co.uk](http://henryison.co.uk) 



### GEN in TOUCH

**We love hearing from you!**

TO SUBMIT A FREE ADVERT PLEASE EMAIL  
**freeads@bullivantmedia.com**

### Coventry Observer.co.uk

**Website:** [www.CoventryObserver.co.uk](http://www.CoventryObserver.co.uk) **Online Newspaper:** [www.CoventryObserver.co.uk/editions](http://www.CoventryObserver.co.uk/editions) **Facebook:** [www.facebook.com/CovObserver](http://www.facebook.com/CovObserver)

**Twitter:** [www.twitter.com/coovobservernews](http://www.twitter.com/coovobservernews) **Instagram:** [www.instagram.com/coventryobserver](http://www.instagram.com/coventryobserver)

**NEWSDESK** **01527 588657** **ADVERTISING** **01926 317111** **SPORTSDESK** **01527 588659**  
Editor: Tristan Harris - [editor@coventryobserver.co.uk](mailto:editor@coventryobserver.co.uk) National & Agency Mock-ups - 0207 832 1649 Email: [adverts@coventryobserver.co.uk](mailto:adverts@coventryobserver.co.uk)

---

### Leamington Observer

**Website:** [www.LeamingtonObserver.co.uk](http://www.LeamingtonObserver.co.uk) **Online Newspaper:** [www.LeamingtonObserver.co.uk/editions](http://www.LeamingtonObserver.co.uk/editions) **Facebook:** [www.facebook.com/leamington.observer/](http://www.facebook.com/leamington.observer/)

**Twitter:** [www.twitter.com/leamobs](http://www.twitter.com/leamobs)

**NEWSDESK** **01527 453737** **ADVERTISING** **01926 317140** **SPORTSDESK** **01527 588659**  
Editor: [editor@leamingtonobserver.co.uk](mailto:editor@leamingtonobserver.co.uk) National & Agency Mock-ups - 0207 832 1649 Email: [adverts@leamingtonobserver.co.uk](mailto:adverts@leamingtonobserver.co.uk)

---

### Rugby Observer

**Website:** [www.RugbyObserver.co.uk](http://www.RugbyObserver.co.uk) **Online Newspaper:** [www.RugbyObserver.co.uk/editions](http://www.RugbyObserver.co.uk/editions) **Facebook:** [www.facebook.com/rugbyobserver](http://www.facebook.com/rugbyobserver)

**Twitter:** [www.twitter.com/RugbyObserver](http://www.twitter.com/RugbyObserver)

**NEWSDESK** **01527 453737** **ADVERTISING** **01527 453743** **SPORTSDESK** **01527 588659**  
Editor: [editor@rugbyobserver.co.uk](mailto:editor@rugbyobserver.co.uk) National & Agency Mock-ups - 0207 832 1649 Email: [adverts@rugbyobserver.co.uk](mailto:adverts@rugbyobserver.co.uk)

# Lampard frustrated by lack of quality after Sky Blues held to M69 derby draw

by **Aaron Sutcliffe**  
aaron.sutcliffe@bullivantmedia.com

**FOOTBALL:** FRANK Lampard admits Coventry City 'lacked quality' in transition following a goalless draw against Leicester City in the M69 derby last weekend.

The Sky Blues remain unbeaten in the Championship this season after six matches following a stalemate at the King Power Stadium.

However, Lampard praised the defensive resilience of his side and feels Coventry's performances should have earned his side more points this season.

Lampard said: "I'm pretty

happy, you've got to respect the opposition, they're a good team and it's maybe the best they've played.

"We lacked a little bit of quality and sharpness from what we've been showing especially on transitions.

"We were just a little bit off it and that affected our goal threat but if you're going to have one of those days you have to defend well and be a team and we felt pretty secure.

"The performances have been really good, we should have more points but that's football, we want more points and there's still improvement."

Sky Blues stopper Carl Rushworth made nine saves in a fine individual performance as Coventry recorded their second clean sheet of the season.

And Lampard heaped praise on the Brighton and Hove Albion loanee for keeping the scores level.

Lampard added: "He's a really good goalkeeper. I'm so pleased I never was one, it's such a difficult position.

"Every part of his game was spot on, some the shots were bouncing in front of him and the saves he had to make he made.

"That's why you want a top goalkeeper in your team where you rely on them a little bit.

"When he was needed it was a very good personal performance."

Coventry are next in action against Birmingham City on Saturday, September 27 with kick-off at 12.30pm at the Coventry Building Society Arena.

## City stopper Rushworth backs club for success despite Leicester stalemate

CARL Rushworth insists he is 'building trust' with the defenders in front of him after recording a clean sheet in Coventry City's M69 derby stalemate against Leicester City.

Rushworth kept his second clean sheet for the Sky Blues at the King Power Stadium since joining on loan from Brighton and Hove Albion.

The goalkeeper made nine saves in the derby clash and believes Coventry will enjoy a successful season as he continues to build a trusting relationship with his defence.

Rushworth said: "It's still only the start of the season so we're just going to keep growing, trusting each other and relying on each other a lot more.

"That's what will make us really successful, we can have each other's backs and demand from each other day in day out. It's been a positive start.

"It shows the desire we've got as a collective and it's a really special group to be part of.

"I'm really enjoying playing again. Hopefully we can continue this unbeaten run and keep putting points on the board and keep challenging."

Carl Rushworth starred for the Sky Blues against rivals Leicester.



The 24-year-old's most impressive stop saw him deny Stephany Mavididi when one-on-one in the box as he stuck out a leg to keep the game goalless.

And Rushworth feels Coventry have gained a point following the draw which preserves the club's unbeaten start to the season.

Rushworth added: "It was a really good performance from the team. We were under pressure for a lot of the game but we dug deep and eve-

rybody put their body on the line.

"Thankfully when I was called upon I was able to help the players in front of me out like they were helping me out throughout the whole game.

"It's a point gained, it wasn't as one-sided as I thought in the moment, we had our chances and could have walked away with three points.

"It was good to see that all the work throughout the week has paid off."

## Youngsters continue strong start to season

COVENTRY City under-21s cruised to a comfortable 4-0 win away at Crewe Alexandra to secure back-to-back victories.

The young Sky Blues took an early lead courtesy of Callum Perry's penalty before Elliot Betjemann doubled City's advantage before the break.

And further goals from Rylie Siddall and Alfie Wright sealed a comprehensive victory for Mark Delaney's side at Crewe's academy ground.

The result means Coventry's youngsters sit third in the Professional Development League North standings.

City broke the deadlock after just four minutes when Perry scored from the penalty spot after Stan Dancey pulled back Josh Toluwalaju in the box.

And Coventry doubled their lead on 38 minutes as Betjemann's free-kick from just outside the penalty area found the net via the aid of the post.

Siddall all but sealed the points for City on 57 minutes after Crewe gave the midfielder too much time to pick his spot.

And Wright completed the scoring three minutes from time as the young Sky Blues secured their biggest win of the season so far.

Coventry's under-21s are next in action against Hull City on Tuesday, October 7 with kick-off at 1pm at the Coventry Building Society Arena.



Coventry Blaze celebrate during their win against Cardiff Devils. Picture by Scott Wiggins.

## Blaze overcome Flames and Devils in Challenge Cup ties

**ICE HOCKEY:** COVENTRY Blaze enjoyed a four-point weekend in the Challenge Cup with back-to-back victories against Guildford Flames and Cardiff Devils.

Blaze netminder Mat Robson produced heroics in both games as Coventry beat the Flames 5-3 at the Guildford Spectrum and then won 2-1 against the Devils at the Skydome Arena.

Robson made several early saves against Guildford before the home side broke the deadlock at 8.22 when Tyler Busch fired home a one-timer between the goaltender's pads.

However, Coventry equalised on the 14-minute mark as Grant Mismash opened his Blaze account after good work from Alessio Luciani.

Blaze completed the turnaround at 21.41 when Mike Pelech netted his first Coventry goal after Kim Tallberg capitalised on a Flames turnover.

Despite the net being off its moorings, a video review confirmed the puck would have crossed the line.

Robson made a fine save to deny Flames on a breakthrough before Coventry successfully defended a five-on-three scenario for almost two minutes.

Guildford eventually drew level at 34.54 as Lewis Hook reacted quickest to turn the puck home following a goalmouth scramble.

Blaze reclaimed the lead at 39.11 when Luciani rifled a shot past Flames netminder Taz Burman.

And the visitors extended their lead at 41.07 on the powerplay

as birthday boy Matthew Gleason redirected Jere Vertanen's attempt into the net.

The Flames hit back almost immediately at 41.52 as Cole Uly cut the deficit to a single goal before Robson somehow kept the puck out moments later following a frantic scramble.

Robson made another crucial stop later in the third period before Blaze sealed the points at 51.39 as Sam Ruffin also scored his first goal for the club.

Coventry then battled to a hard-fought victory against Cardiff as Blaze recovered from an early deficit to secure a third win from four Challenge Cup outings.

Robson again inspired Blaze to victory as he made 45 saves after Ryan Barrow put the visitors ahead after just 53 seconds at the Skydome.

Coventry eventually drew level at 20.53 when Pelech pounced to finish on the rebound after Devils netminder Christian Stoever spilled Mismash's initial shot.

And Blaze completed the turnaround at 42.03 as Colton Saucerman fired home in a display which saw the defenceman log 35 minutes and 35 seconds of ice time.

Coventry continue their Challenge Cup campaign against Sheffield Steelers on Saturday, September 27 with the face-off at 7pm at the Utilita Arena.

Blaze then host Nottingham Panthers on Sunday, September 28 with the face-off at 5.30pm at the Skydome.

## Ashes call-up for Bear Bethell as England name 16-man side

**CRICKET:** WARWICKSHIRE all-rounder Jacob Bethell has earned a place in England's 16-man squad for the Ashes series later this year.

Bethell became England's youngest-ever men's captain on his country's recent tour of Ireland for a series of T20 matches.

The 21-year-old forms part of a 16-man squad heading to Australia in November.

England last won the Ashes in the summer of 2015 with Australia winning or retaining the urn in each of the last four series.

And England last won the Ashes in Australia in the 2010/11 series.

After a warm-up game against the Lions, England play Australia

in the first test in Perth from November 21 to 25.

The final test takes place in Sydney from January 3 to 8 next year.

### ENGLAND'S 2025/26 ASHES SQUAD

Ben Stokes (Durham), Jofra Archer (Sussex), Gus Atkinson (Surrey), Shoab Bashir (Somerset), Jacob Bethell (Warwickshire), Harry Brook (Yorkshire), Brydon Carse (Durham), Zak Crawley (Kent), Ben Duckett (Nottinghamshire), Will Jacks (Surrey), Ollie Pope (Surrey), Matthew Potts (Durham), Joe Root (Yorkshire), Jamie Smith (Surrey), Josh Tongue (Nottinghamshire), Mark Wood (Durham)

**CRS LTD**  
 Spring Lane South, Malvern WR14 1AT  
 ATF's are the **ONLY** legal way to scrap your vehicles  
**BUYERS**  
 of all SCRAP Metals and SCRAP Vehicles  
 The **ONLY** authorised treatment facility in Malvern!  
 Best Prices Paid • Collection & Skip Drops Farm  
 Equipment, Copper, Brass etc. • 50 Ton Weigh Bridge  
**ID REQUIRED - 01684 578081**  
 www.crs-malvern.co.uk

# Observer SPORT



9 772040 128006  
 Published by Bullivant Media Group Ltd, Webb House,  
 Church Green East, Redditch, Worcestershire, B96 8BP  
 Printed by Newsquest, Newspaper House, Caney  
 Mead, Oxford, Oxfordshire, OX2 0EJ

**VINYL RECORDS WANTED**  
 Buying since 1978  
 Get your cash TODAY!  
 I will come to you  
**Phone PAUL**  
**01527 893992 | 07765 142354**

www.rugbyobserver.co.uk

BRINGING YOU **ALL THE LATEST** SPORTS NEWS AND VIEWS FROM THE AREA

## Valley beat rivals after comeback Trophy win

**FOOTBALL:** RUGBY Town battled to a 2-1 derby win against rivals Racing Club Warwick to claim just their second league victory of the season in midweek.

Goals either side of half time from Rivel Mardenborough and Cairo Taylor put Valley in command before Aaron Opoku scored a late penalty for the home side at Townsend Meadow.

The result leaves Rugby 16th in the Northern Premier League Midlands table, one point above the relegation zone.

Rugby broke the deadlock on 31 minutes when Mardenborough ran onto a loose ball in the box and poked a shot through the legs of Sam Lomax from close range.

And Valley doubled their lead just past the hour mark on 62 minutes as Taylor looped a superb effort over Lomax from 15-yards out.

Warwick won a penalty in the final minute as Opoku sent Marcus Bald the wrong way from the spot but Valley held on to claim the



**Stanley Anaebonam celebrates after scoring Rugby's winner in the FA Trophy. Picture by Martin Pulley.**

bragging rights.

That came after Rugby produced a stunning second-half comeback to beat divisional rivals Belper Town 3-2 and advance in the FA Trophy last weekend.

Belper broke the deadlock on 14 minutes when Jonathan Wafula headed in Kevin Bastos's chipped cross at the back post.

And the visitors doubled their lead with

a near carbon-copy goal on 31 minutes as Jacob Fenton headed in another Bastos cross.

However, Valley halved the deficit five minutes after half time when Callum Griffin saw his effort parried into the net by Belper goalkeeper Kieran Preston from Caine Elliott's nod down.

And Griffin drew the home side level in style on 72 minutes with an audacious lob over the goalkeeper from distance after he spotted Preston off his line.

Valley turned the game on its head just two minutes later as Stan Anaebonam produced a cool finish from Nathan Kabeya's cross-field pass.

Anaebonam celebrated in style by donning a Teenage Mutant Ninja Turtles mask as Valley held on to reach the third round qualifying stage for the first time in 21 years.

Rugby travel to Lichfield City on Saturday, September 27 with kick-off at 3pm at the Trade Tyre Community Stadium.

**Lauren Henry on the water in China. Picture by Benedict Tufnell for British Rowing.**



## Henry seeks medal for GB in Shanghai

**ROWING:** RUGBY-BORN Lauren Henry has progressed to the semi-finals of the World Rowing Championships in Shanghai, China.

The Great Britain rower cruised to victory in her heat in a time of seven minutes 17.75 seconds.

Henry said: "It was a solid first race, there's always bits

I can work on and improve, but I thought I controlled the race from start to finish.

"I love going out and putting on a show and I'm really grateful to be doing what I love."

The 23-year-old posted the fastest time in the heats and took to the water again in the first semi-final earlier today.

# CASHBROKERS

LEAMINGTON SPA

PAWNBROKING LOANS  
 SCRAP GOLD & SILVER  
 BUY BACK  
 JEWELLERY & WATCHES  
 COINS & BULLION

**CASH PAID**  
**FOR GOLD, SILVER,**  
**COINS & BULLION**



**01926 258252**

144 Parade, Leamington Spa, CV32 4AG

www.cashbrokersleamingtonspa.co.uk

