

WANTED
Motorcycles and Scooters
 Any cc, condition or age,
 good prices paid
 07944 781 933 | 01926 257 643

Mum in running for award after marathon effort



A 'SUPER mum' from Rugby has been shortlisted for a prestigious award for raising £22,000 for charity to celebrate her disabled daughter's 18th birthday.

by **Andy Morris**
 andy.morris@bullivantmedia.com

Fran Condry, her dad Ed, and fellow teacher Helen Andrews have been jointly shortlisted for the Fundraiser of the Year title in disability charity Sense's annual awards.

The Paddox Primary School teacher and her team ran the London Marathon in April to raise funds for the charity, which has supported her daughter Mia, who was born with cerebral palsy and without eyes, since she was three.

Mia's 18th marked a huge milestone that her family were once unsure if she would reach. Retired bishop Ed even blessed her shortly after she was born, as it was not known if she would survive.

Since then, Mia, who has good hearing and verbal communication skills, has gone on to thrive and become an adventurous and increasingly independent teenager

who enjoys playing adaptive sports. Mia was at the London Marathon to cheer from the sidelines alongside her dad Dean and siblings Leo, 13, and Iris, 11.

Fran, 43, said being nominated for the award made her, Helen and Ed 'extremely proud and happy'.

She added: "Taking on the London Marathon and fundraising for Sense seemed the perfect way to celebrate Mia's 18th birthday. Sense has empowered Mia to be the very best she can be throughout her life."

"Her amazing multi-sensory impairment teacher, Anne Cheesbrough, has been supporting Mia now for 15 years and has become an integral part of our family's lives. Mia loves her monthly play sessions with Anne. They are best friends - they just have a really good time together."

"Anne has encouraged Mia to do all kinds of things, like adaptive skiing, surfing and abseiling, going off on holiday and becoming a mem-

ber of a Saturday morning choir. But she has also helped me with accessing education for Mia. Now she's helping me think about Mia's future and how to support her to be more independent and reach her full potential as an adult - perhaps by going off to college."

"Thinking about everything Mia has achieved kept me going on London Marathon day. Helen and I stuck together all the way round. We've shared a job, splitting teaching a primary school class for a decade."

"Dad, meanwhile, did the marathon at his own pace and enjoyed the atmosphere."

"One day, we'd love to do the London Marathon with Mia and a team of us would take turns to push her wheelchair. We've done Parkruns with her and she says, 'Go faster! Go faster!' so she'd enjoy doing the marathon."

Anne is a senior MSI practitioner at Sense. She said: "Fran, Ed and Helen richly deserve to be shortlisted. They give an awful lot to their local communities and to the children Fran and Helen teach."

Mia with her running team (left to right), grandfather Ed Condry, mum Fran Condry, and Fran's job share partner Helen Andrews.

"Getting to know and supporting Mia since she was very young has been a joy and a privilege."

"She's grown up into a very confident young lady. Her imagination and memory are phenomenal and when Mia and I meet up for our sessions, we often create stories and songs. She and her whole family are

very important to Sense and we're so happy to honour them."

This year's Sense awards take place at the end of November, judged by a five-strong panel of disabled people including Strictly Come Dancing finalist Tasha Ghouri.

Visit www.sense.org.uk/sense-awards for more information.



Tel: 0800 3032559
 Mob: 07773 911552
www.drives4u.co.uk

Are you looking to improve or enlarge your driveway or patio?

We can provide you with a beautiful new patio or driveway in Coventry, Bromsgrove, Redditch, Solihull, Leamington, Kidderminster and Birmingham

5 Year guarantee

- We've designed and built just about every shape and size of driveway and patio you can imagine, so we will not be phased by your project.
- We strive to achieve 100% satisfaction and unlike other driveway companies, with us you pay absolutely nothing upfront.
- Give us a call and you could save upto £1000



Tel: 0800 3032559 | Mob: 07773 911552 | www.drives4u.co.uk

Ready to run - Stephen Laing, head of collections at the British Motor Museum, Charlotte Vowden and Alex Brundle with the Wolseley Voiturette.



Racing gloves on for Veteran Car Run

RACING driver Alex Brundle will not be hitting his usual speeds when he takes part in the London to Brighton Veteran Car Run this year.

Alex will be behind the wheel of an 1899 Wolseley Voiturette, one of several pre-1905 cars the Gaydon-based British Motor Museum will be entering into the famous run on Sunday (November 2).

He will be joined by TV and radio presenting co-driver Charlotte Vowden, known for her passion for classic cars, to celebrate a milestone for the Wolseley.

It is 125 years of the Thousand Mile Trial. Driven by Herbert Austin, the car took part in the trial in 1900 which went from London to

Edinburgh and back and Austin was awarded first prize in his class. The Voiturette is one of just two cars from the Trial that survive today.

But it is not the first time it has taken part in the London to Brighton run, having done so no less than 39 times.

Alex, who has multiple World Endurance Championship race victories and the 2016 European Le Mans Series Championship to his name, said: "It's a lot different from anything else I've ever driven. You feel like you're part of the mechanics of making it work, which I really like. I'm really looking forward to getting out on the open road with it."

How were you affected by JLR



About 6,500 employees were back working at the site following the phased restart of operations after the major cyber-attack.

BUSINESS leaders are keen to hear how supply firms are managing in the aftermath of the cyber attack that hit JLR.

A new survey of companies in the JLR supply chain has been launched by Coventry and Warwickshire Chamber of Commerce, Black Country Chamber of Commerce and Greater Birmingham Chambers of Commerce.

The attack on the automotive giant at the start of September led to the company halting operations for around a month and, while a phased return began earlier in October, it is still not working to full capacity.

The three chambers representing businesses across the West Midlands and Warwickshire conducted a survey at the height of the crisis to find out how suppliers were faring and are following that up now to gauge the latest sentiment.

The questions focus on the financial pressures suppliers are under and what support is still required.

Corin Crane, chief executive of the Coventry and Warwickshire Chamber of Commerce, said: "Our initial survey had 84 responses from firms in the supply chain which covered 29,700 employees in the region. Nearly half told us that they faced serious financial repercussions and while it's great news that JLR has begun operations again, the crisis isn't over."

Raj Kandola, acting deputy CEO of Greater Birmingham Chambers of Commerce, said: "We felt that, as the three Chambers who represent businesses across the region, we should go back out to the suppliers and find out what, if anything, has changed for them in the past couple of weeks and the pres-

ures they are under." Black Country Chamber of Commerce CEO Sarah Moorhouse concluded: "Our members are continually telling us about the ongoing issues they are still facing. By conducting this new survey, it means we can feed critical, up-to-date information back to Government. "This will help us keep

up the pressure to ensure that the right support is getting to those who need it most and, importantly, that it is at a level that will keep tier ones and the downstream supply chain going until operations get back to normal."

The survey is available at www.surveymonkey.com/r/F5SHXX5



KINGHAMS

AUCTIONEERS • VALUERS

Antiques Event in Dorridge

Thursday 6th November 11 am to 2 pm



A Ruskin High Fired Vase from a West Midlands Collection of Ruskin totaling £44,000

Free Valuations of Paintings, Ceramics, Silver, Watches, Antiques & Collectables

With Specialist Adrian Rathbone

at The Meeting Room, Dorridge Village Hall

Grange Road, Dorridge, Solihull, B93 8QA

Home Visits. Estate Clearance. Downsizing Advice. Probate & Insurance Valuations.

Contact: Adrian Rathbone 01608 695695 adrian@kinghamsauctioneers.com

Head Office: 10-12 Cotswold Business Village, Moreton-in-Marsh, GL56 0JQ www.kinghamsauctioneers.com

[bargains_from_yesteryear](#)

BENN Hall, Rugby

Newbold Rd CV21 2LN

Rugby

Antiques, Collectors & Vintage Fair

Sunday 2nd November

Open 9:30 – 3:30pm

FREE Sunday Parking

£1.50 Adult Adm.

Refreshments Available

Enquiries 01827 895 899

07545844505

bargainsfromyesteryear.com

Followed by Sunday 7th December '25

PUBLIC NOTICES



For all your latest information on Planning Proposals, Traffic Notices, Goods Vehicle Operator Licences, Licences To Sell Alcohol and Probate Notices...

See page 29



To split or not to split as row grows



by Andy Morris

WARWICKSHIRE remains more divided than ever over the future of local government in the county.

Under central government plans for the biggest national shake-up of local government since the 1970s, Warwickshire County Council, together with Warwick District Council, Stratford District Council, Rugby Borough Council, Nuneaton and Bedworth Borough Council and North Warwickshire Borough Council will all be abolished on April 1 2028.

They are set to be replaced by either one single council for Warwickshire or two councils - one for the north and one for the south - with each authority responsible for all services

for its part of the county.

Reform-led WCC voted Warwickshire should not only form one large unitary authority, but should also become part of the West Midlands Combined Authority (WMCA).

Set up in 2016, the WMCA is currently made up of 18 councils, including city councils Birmingham and Coventry.

While not a council itself, the WMCA exists to grow economies in its regions, investing in projects such as transport and housing to tackling climate change.

The move was not however backed by Liberal Democrats, the second largest group on WCC, who favoured the two council split for the county of Warwickshire.

Following an independent consul-

tation, commissioned by the existing six Warwickshire local authorities, asking for views, nearly three-quarters of residents expressed a preference for a two council system.

In fact there was less than a quarter of residents who opted for one large council covering the whole of Warwickshire.

Over 2,300 residents provided feedback to help decide how councils were structured and how residents accessed services.

Lib-Dem-controlled SD, Green-led WDC, Labour-led Nuneaton and Bedworth Borough Council and Tory-run North Warwickshire Borough Council have already expressed a preference for a two county system, with Labour-led Rugby Borough Council yet to decide.

A final detailed report is expected

before the end of the month, which will also provide feedback from focus groups and key stakeholders.

Survey feedback, analysis and other relevant information will be taken into account before the six respective councils formally submit their final reorganisation proposals to the government at the end of November.

Central government will then consult on the proposed plans before making a final decision sometime next year on Warwickshire's future.

Currently the county is run on a two-tier local government system.

WCC, headquartered at Shire Hall in Warwick, is split over plans for the future of local government in the county. Picture by Marcus Mingins

Court date is set for ex-top cop

THE former Chief Constable of Northamptonshire Police will appear in court next month charged with fraud and misconduct in a public office.

Constable Nick Adderley, 59, has been charged by the Crown Prosecution Service (CPS) in relation to false claims he allegedly made in his job application and CV when he applied to join the force as Chief Constable in 2018.

The charge comes following a lengthy investigation by the CPS and the Independent Office for Police Conduct.

Constable Adderley was sacked at a Gross Misconduct Hearing in Northampton in June 2024 after being suspended from the Force in October 2023.

It followed allegations that he had lied about his naval career, including a claim he had served in the Falklands War despite the fact he was only 15 at the time.

He faces a charge of fraud under Section 1 of the Fraud Act 2006, and a further charge of Misconduct in a Public Office.

He will appear before Westminster Magistrates' Court on Monday November 10.



Warwickshire Wildlife Trust

Visit Brandon Marsh Nature Reserve

Precious wild space on Coventry's doorstep

Save on entry with Warwickshire Wildlife Trust membership!

-  24/7 access to Brandon Marsh Nature Reserve
-  Accessible trails and 9 wildlife hides
-  Support local wildlife and nature



From just £4 per month

Visit us: Brandon Marsh, Brandon Lane, CV3 3GW

Day entry: Adults £4.50, Family £12. Members save with anytime access.

Visitor Centre opening hours: Mon-Fri 9.30am - 4.00pm, Sat & Sun 10am - 4.00pm. Café open every day for hot and cold food, drinks, and bakes.



92 hectares protected for nature and people with pools, reedbeds, wildflower meadow and woodland

For more information, or to book, please call **03332 342 514** Quote **OSG**

★★★★★ Trustpilot

Reader Travel



HYDE PARK WINTER WONDERLAND & LONDON

Departing Sat 27 Dec '25

Prepare for the high point of the festive season, the dazzling Winter Wonderland, where twinkling lights and rides illuminate Hyde Park in a festive glow. As well as admission, we include two attractions such as the iconic Ferris Wheel and Magical Ice Kingdom.

Your break includes

- ✓ Return coach travel **from Rugby, Coventry**
- ✓ Overnight stay at a selected hotel outside London (JG3 or JG4 rating) with full English breakfast
- ✓ Admission to the Winter Wonderland in Hyde Park (5pm-6pm time slot). Ride on the Giant Wheel (6pm-7pm time slot) & entry to the Magical Ice Kingdom (7pm-8pm time slot)
- ✓ Free time in London for shopping & sightseeing

2 Days by Coach only £169

Single Supplement £50



ABBA VOYAGE LIVE IN LONDON

Departing Sun 1 Mar '26

Have you always wanted to experience the magic of an ABBA concert? Well now is your chance to say Thank You for the Music! Join us at the ABBA Arena for the incredible ABBA Voyage, where the global pop icons appear on stage as digital avatars brought to life.

Your break includes

- ✓ Return coach travel **from Rugby, Coventry**
- ✓ Overnight stay at a selected hotel (JG3 or JG4 rating) with breakfast
- ✓ Ticket to ABBA Voyage at the ABBA Arena with coach transfers (dancefloor, standing)
- ✓ Free time in London for shopping & sightseeing

Upgrade to a seated ticket in Block F or K for £25pp or Block G or J for £45pp

2 Days by Coach only £229

Single Supplement £60

These packages are subject to Just Go! Holidays terms & conditions. Coach bookings are protected by 3rd party Coach Holidays & the Association of British Travel Organisers (ATOTU). All holidays are ATOTU protected No.1289. Prices are per person, based on two people sharing a room & based on bookings made up to 7 days post publication, after which prices may fluctuate. Choices of date, hotel, airport or pick up location may incur a supplement. Please see website or call for full details.

Visit us online at justgoholidays.com/OSG

justgo

033 numbers are free within inclusive minutes packages otherwise standard rates apply.

Bloomin' fantastic on golden day at awards

RUGBY has scooped several awards at the prestigious Heart of England in Bloom competition, winning gold for the 16th consecutive year.

The town's entry in this year's competition, run by the Royal Horticulture Society (RHS), embraced the national gardening competition's theme, which for 2025 was 'Plants and People.'

As well as retaining the Gold in the Small City category, Rugby was presented with the Small City category, the judge's discretionary award for Horticultural Excellence, and the Heart of England in Bloom Overall Winner.

Rugby has also been nominated by the Heart of England region for the national Britain in Bloom 2026 Small City category.

Rugby's submission included contributions from schools, and volunteer groups including Butterfly Conservation Warwickshire, Rugby Wildlife Group, Warwickshire Wildlife Trust, Arden Ringing Group, and Ryton Garden Organic.

Also joining the efforts were

by **Andy Morris**
andy.morris@bullivantmedia.com

community partners including New Bilton Community Association, ISS, Rugby Gardeners Guild, Onley Prison, sponsors, businesses and more.

The awards were accepted by Mayor Barbara Brown, chief officer for leisure and wellbeing Tom Kittendorf, green space and biodiversity manager John Howes, and green spaces officer Colin Horton, who all attended the award ceremony at the Three Counties Showground in Malvern.

In July, judges were taken on a tour of the town, visiting locations including Caldecott Park, Jubilee Gardens, St Andrew's Church, Rugby School, Newbold Quarry and Abbots Farm School.

The judges received a presentation and a portfolio showcasing the year's activities based on the judging criteria of horticulture, environment and community.

In Caldecott Park, the judges visited the newly installed accessible



Left to right: Britain in Bloom judge Joe Hayden, green space and biodiversity manager John Howes, Mayor Barbara Brown, green spaces officer Colin Horton, and chief officer for leisure and wellbeing Tom Kittendorf at the England in Bloom awards ceremony in Malvern.

wheelchair swing, introduced earlier this year, and the improved bowling green and tennis courts.

They also saw the town's composite sleepers and raised beds, including a sensory bed designed to encourage an immersive horticulture experience for residents, which are maintained by community groups including ISS and Rugby Gardeners Guild.

The judges were impressed with projects and displays at Rugby School and Abbots Farm Junior School, as well as the biodiversity and conservation efforts by volunteers at Newbold Quarry.

This year, commemorative benches for Victory in Europe (VE) and Victory over Japan (VJ) Day were installed at Whitehall Recreational Ground, Hillmorton Greens and

Assheton Rec. And, in celebration of Rugby Borough Council's 50th anniversary, 50 trees were planted at Rokeby Fields, with another 50 trees forming a winding avenue in Cawston. An additional 200 trees have been planted across the borough, many planted by volunteers and community groups.

Council leader Coun Michael Moran said: "This is a fantastic achievement for Rugby, a true reflection of the incredible work by our community groups. I'm proud that we have been recognised as one of the best in the country for creating and encouraging green spaces through gardening and community participation."

Coun Maggie O'Rourke, the council's portfolio holder for partnerships and wellbeing, added: "I'm

thrilled to hear that Rugby has been awarded Gold, the winner for the Small Cities category, Horticultural Excellence, and Overall Winner. This means we will now go forward to the national Britain in Bloom final next year. We were up against strong competition, which makes this award even more special."

Her Liberal Democrat counterpart Coun Neil Sandison said: "Rugby's golden gardeners have done it again. It's been an absolute pleasure to see all the contributions from the community and to admire the work of all council departments involved."

"Speaking to the judges after their tour of the borough, it was clear that they were impressed by the collective effort of everyone involved."



Stress-Free From *Start* to *Finish*.

Buying, selling or remortgaging?

Trust our expert conveyancers.

Get your
free consultation today!

0121 733 8000
wilkes.co.uk

Your legal partner
for all things in *life*.

Rogue builder jailed for cynical swindle

A ROGUE builder has been jailed after leaving a Leamington resident with a dangerous and mouldy garage conversion.

Jonathan Rhys Lomas was sentenced to 22 months in prison following a successful investigation and prosecution undertaken by Warwickshire County Council Trading Standards.

The 50-year-old builder, of Wellington Road, Leamington, took money but did not have the skills to carry out the work leaving the victim's build 'wholly defective and dangerous'.

The judge described the victim as being left in 'Promise Land' - Lomas promising repeatedly to return to fix the work, which he failed to do, leaving a family including a newborn baby in a home, some of which was mouldy

by Philippa Mingins

and at risk of collapse. Lomas, who traded as JD Lomas and Sons, had previously pleaded guilty to three offences under the Fraud Act 2006.

He had previously carried out some patio work for the victim, which he was happy with, and approached the builder again to carry out some more extensive renovations to his property, which it transpired Lomas did not have the skills to complete.

Lomas agreed to convert a garage into a wet room and playroom for the victim and almost immediately took the grossly inflated sum of £1,200 from the victim to pay for planning permission but never made an application.

He later took a further £10,000 for building materials but used most

of the money to pay back another unhappy customer.

Further payments were then made to Lomas totalling £18,800 in all. Much of this money was also used to pay his debts.

Building work progressed slowly with Lomas often claiming that either he or a family member was ill, and he could therefore not visit the property.

When interviewed by trading standards, Lomas admitted he was not coping and was unable to competently carry out the building and electrical work on the conversion, which he left in an unfinished, defective and dangerous state.

His failure to complete the works in a timely fashion and use the correct damp proofing led to the garage walls becoming covered in mould. Consequently, the victim and his family, who had recently



The garage conversion was mouldy and dangerous.

had a baby were forced to live upstairs.

At Coventry Crown Court Lomas was sentenced to 22 months in prison and ordered to pay the victim surcharge.

The judge stated the offences committed were appalling and from the start Lomas had been acting

fraudulently, a rogue trader who perpetrated a cynical, calculated, and persistent swindle.

Lomas, representing himself, said he was ashamed of what he had done and wanted to pay the family back although he did not currently have the money to do so.

Jailed roofer ordered to pay £103,000 in compensation to victims

A ROGUE roofer who ripped off Leamington residents has been ordered to pay more than £103,000 in compensation.

Darren Bullaman Lee was sentenced to two-and-a-half-years in jail in 2024 for overcharging residents for work to their roofs that was largely unnecessary.

Warwickshire County Council (WCC) Trading Standards

Service, who investigated and prosecuted Lee, applied to Warwick Crown Court for a Proceeds of Crime Act Confiscation Order last month.

Lee has agreed to pay the £103,000 in compensation to his victims who live in both Leamington and Nuneaton.

If he does not, he will face another 18 months in prison,

and he'll still owe the money when he comes out.

WCC spokesman Coun Michael Bannister said: "I'm delighted with the action our Trading Standards service has taken in seeking to recover money lost by the victims of rogue traders, so that they can be compensated."

"Warwickshire Trading Standards will continue to

investigate and prosecute rogue traders and protect and support Warwickshire residents, especially our most elderly and vulnerable."

Three of the victims found 29-year-old Lee of Windmill Road, Towersey, Oxfordshire, on trustatrade.com where he was advertising as Your Choice Roofing. His tactic was to start

with a lower quote before finding more and largely fictitious 'problems' with the roofs he was working on. Costs then soared.

When jailed last year, Lee was also handed an eight-year Criminal Behaviour Order and an eight-year Director Disqualification Order. Lee had previously pleaded guilty to four counts of fraud.



BATH OUT, SHOWER IN OFFER

NOW ONLY £3,999!

Ready To Upgrade Your Bathroom?

Call us today or visit our showroom to find out more.

CITY BATHROOMS & KITCHENS

Great Product, Great Service,
First Class Installation
All At A Price You Can Afford

- ✓ Removal of your existing bath
- ✓ Installation of a stylish walk-in shower
- ✓ Brand new shower supplied and installed
- ✓ Supply and installation of high-quality PVC wet wall panels



FREE UPGRADE TO NON-SLIP SHOWER TRAY

2 x GRAB RAILS FOR EXTRA SAFETY - FREE!



PLUS: NOW INCLUDING A FREE SHOWER SEAT

A Full, Professional Job - With No Hidden Extras

- ✓ Quick Turnaround
- ✓ Expert Installation
- ✓ Hassle-Free, Complete Transformation



158 Longford Road, Coventry, CV6 6DR (Off M6)
Tel: 02476 365877 www.city-bathrooms.com

Mon - Sat 9am - 5pm Sun 10am - 4pm

£420k funding to boost crackdown on city fly-tipping

COVENTRY City Council has announced new investment into projects designed to keep streets cleaner and safer in a crackdown on fly-tipping.

by **Andy Morris**
andy.morris@bullivantmedia.com

The council is investing £420,000 during 2025-26 towards initiatives including a dedicated team for the Ball Hill area, enhanced suburban shopping site coverage, and increased mechanical sweeping across the city.

This investment comes alongside an £80,000 CCTV budget that will mean six additional cameras deployed over the next four years, bringing the total network to 30 cameras covering fly-tipping hotspots.

The council's Environmental Enforcement Team has handled more than 11,000 fly-tipping referrals in the past 12 months.

The team has investigated more than 3,000 incidents, examined over 1,400 refuse complaints, and served more than 900 notices requiring landowners to clear waste or address vermin issues.

Coun Abdul Salam Khan, the

city council's cabinet member for policing and equalities, said: "Fly-tipping blights our communities and we're absolutely committed to tackling this issue head-on."

"The investment we're making demonstrates that we're listening to residents' concerns and taking decisive action."

"Our enforcement teams work incredibly hard investigating thousands of incidents every year, and the new resources we're deploying – from additional street cleaning teams to expanded CCTV coverage – will make a real difference across Coventry."

"We're also focusing on education alongside enforcement, because lasting change comes from everyone taking responsibility for keeping our city clean."

The council has introduced a pilot programme in Ball Hill, including the installation of Big Belly Bins, a daily clearance team, enhanced street sweeping, and a 'Pride in Ball Hill' campaign

working with local business and community group Destination Ball Hill.

New initiatives are under way at shopping sites including Jubilee Crescent, Upper York Street, Daventry Road, Gosford Street/Far Gosford Street, and A45 lay-bys, with new 1,100-litre bins and dedicated clearance teams.

Coun Patricia Hetherington, cabinet member for city services, said: "It's a constant battle – but a battle we are determined to win."

"Fly-tipping has become a real and persistent problem and it is critical that we come together to find long-term solutions to reduce its impact on communities."

"We have secured some extra funding to help us trial some new ways of working. But, we also know we can't crack this alone so I am really pleased that we will be working with groups like Destination Ball Hill and the many wonderful litter picking groups who already make a huge difference across the city."

Visit www.coventry.gov.uk/street-scene/flytipping to report fly-tipping.



Staff and pupils at Templars Primary School give their new kitchen equipment the thumbs-up.

Amazon gets pupils cooking

LITTLE chefs at a Coventry primary school have been given the ingredients to learn life skills, thanks to a donation.

Templars Primary School has received a £1,400 donation from Amazon in the city towards its culinary education programme.

The donation will fund kitchen equipment including child-sized aprons, air fryers, cutlery, crockery, and dinnerware designed for the school's educational mini kitchens.

The school's programme aims to equip youngsters with essential life skills through hands-on cooking experiences.

Helen Benarous, from the school, said: "This partnership with Amazon demonstrates the value of businesses investing in our children's education."

"These mini kitchens will give our pupils practical cooking skills while supporting their understanding of nutrition, food safety, and healthy eating habits."

The donation follows previous volunteering support from the team at Amazon in Coventry, who previously helped with activity co-ordination at the school's Summer Fair, as well as cleaning and maintaining the school garden.

Kate Marie, from Amazon in Coventry, said: "We're big believers in the importance of practical life skills in primary education, and we're always happy to help the staff and students of Templars Primary, who bring such enthusiasm to everything they do."

"We can't wait to hear about the tasty dishes they cook with their new equipment."

News and sport online: www.coventryobserver.co.uk

Free Fantastic Half-Term Fun

£1500 worth of prizes to be won!

Leamington's 10th Pumpkin Path

25 Oct - 02 Nov

The Pumpkin Path Party

For 10 years now, we've come to play, To party together in a Halloween way!
On the Pumpkin Path, under the moon so bright,
Monsters gather for a spooky night!
Mummies shuffle, black cats creep,
Tombstones creak as secrets seep.
Wander through town, with eyes open wide,
There's magic and mysteries hidden inside.
From silly witches to ghosts that party,
Look for the place that seems to be starry.
Bring what you've gathered from your eerie round,
Tell us where the giant coffee cup can be found!

Join the Pumpkin Path Party!

Explore Leamington Spa this Half Term and follow the trail of clues hidden in shop windows to uncover where to find the **Giant Coffee Cup!**

Enter for your chance to win fang-tastic prizes!

Pick up your entry form from participating retailers, the Upper Mall in Royal Priors or the Visitor Information Centre.

Don't miss out on this frightfully fun family adventure!

Visit www.royal-reamington-spa.co.uk for more details.

25
OCT

Igor's
Graveyard
REGENCY COURT
12 - 4pm

31
OCT

Pirate Stilt Walker
AROUND TOWN
11am - 3pm

01
NOV

Free
Lantern
Workshop
ROYAL PRIORS
11am - 3pm



Citizen customer Salma Mbarouk meets representatives from Coventry City Council, Excelsior Land, LoCaL Home and her social landlord.

Old garages now become homes

A 'CREATIVE' use of brownfield land has brought 19 new affordable housing association homes to Coventry.

by **Andy Morris**
andy.morris@bullivantmedia.com

The new homes have been built on disused garage sites in Whoberley, Stoke Aldermore, Bell Green, Holbrooks and Cheylesmore.

The homes, built in partnership with housing association Citizen, have now been completed and keys handed over to customers, marking the completion of the development.

The homes are a mix of one- and three-bedroom houses, as well as one- and two-bed bungalows.

Citizen customer Salma Mbarouk, who recently moved into one of the homes with her husband and two children, said: "When I moved in here, it felt amazing.

"I love my house so much - it's nice and cosy and it's warm even with the heating is off. I can't fault it. It's beautiful and amazingly done. My

kids love it and it's their safe place.

"Our previous house was too small, and I was sharing a room with my 10-year-old daughter. This is the first time she has been able to sleep in her own room - she loves having her own space.

"The garden and the kitchen are my places in the house. The garden is spacious, I can put my children's toys out there and I love cooking which I can do in the kitchen.

Nick Byrne, executive director of development at Citizen, said: "It's fantastic to hand over these homes to our customers across our eight garage sites in Coventry.

"This is a great example of working with our partners to make a positive difference to people living in our communities, and we have also transformed brownfield sites

across the city to help provide more affordable homes."

Construction timelines were reduced thanks to the use of housing manufacturer LoCaL Homes timber frames, which were built at its factory in Walsall and assembled and built on site by Excelsior Land.

Mike Doolan, sales and partnerships manager at LoCaL Homes, said: "We are delighted to have been a key delivery partner on this development which deployed a creative use of brownfield land to address local housing need.

"Our off-site manufactured Eco-200 timber frame solutions, complete with brick slips, helped speed up construction time on site and produced less waste when compared to traditional building methods.

"The incoming residents can expect to pay lower fuel bills thanks to the thermal efficiency of our fabric-first approach."

Roadworks will impact bus services

BUS services between Rugby, Brinklow and Coventry will be disrupted for around seven months due to roadworks.

Clifford Bridge Road in Coventry is closed to southbound traffic between the B4082/A46 Link Road and B4428/Brinklow Road for approximately seven months to allow essential works to take place. Northbound traffic is unaffected.

Bus services 85, 85A, 85B, 85H and 85S (Coventry to Rugby via Brinklow) will be diverted from Clifford Bridge Road via Belgrave Road, Hipswell Highway, Binley Road and Clifford Bridge Road to Brinklow Road.

They will run non-stop along the diversionary route and will not serve any intermediate stops.



Buses travelling towards Rugby will operate around five minutes later from Coombe Abbey to Rugby - except for morning school buses, which will depart Coventry and University Hospital Coventry up to five minutes earlier.

Some return journeys from Rugby will also depart five minutes later to maintain service reliability.

Coun Jennifer Warren, Warwickshire County

Council portfolio holder for transport and planning, said: "We recognise that these essential roadworks in Coventry will cause some unavoidable disruption to bus services used by Warwickshire residents.

"We encourage all passengers to check the revised timetables before travelling and to allow a little extra time for their journeys.

"We thank everyone for their patience and understanding while this important work is carried out to improve the local road network."

Visit <https://tinyurl.com/2s3an8xx> for information on National Express Coventry services, and <https://tinyurl.com/3jbm6bf7> for information on Stagecoach services.

Autumn Homes and Gardens

at the garden lovers garden centre

Plant Now For Winter Colour

Farnborough Garden Centre

Harefurlong Nurseries

OPEN SIX DAYS A WEEK
Tues - Sat 9-5.30pm, Sun 10.30 - 4.30pm
Open Bank Holiday Mondays
On A423 Southam Road
Nr Farnborough
Banbury OX17 1EL
Tel: 01295 690479

A world of Choice

www.farnboroughgardencentre.co.uk

SEEDS + AUTUMN BEDDING + BULBS
TREES + SHRUBS + CONIFERS + CLIMBERS

Firm will be jewel in Small Business event

A JEWELLERY business that began in Leamington during lockdown has been recognised among the UK's top 100 small firms.

Impressums Jewellery, which creates silver jewellery inspired by natural and coastal influences, was founded by Lauren Winnett in the midst of the pandemic in 2020 and has recently celebrated its five-year milestone.

Following a nationwide search, the Leamington firm has been selected as part of this year's SmallBiz100 line-up, which showcases the most innovative and admired small businesses across the nation, as part of the countdown to Small Business Saturday on December 6.

Running in the UK for more than a decade, Small Business Saturday is the UK's most successful small business campaign, which celebrates

by **Philippa Mingins**

small businesses and encourages the public to support and spend with small firms.

Lauren said: "I am deeply honoured to have been selected as part of this year's Small Business Saturday campaign. In today's climate, when small independent businesses like mine face so many challenges, this recognition feels especially meaningful. It not only shines a light on the dedication and resilience required to keep a small creative business thriving but also serves as an encouraging boost for the future of Impressums Jewellery."

"Being chosen for this campaign is both a privilege and a reminder of the importance of celebrating and supporting small businesses across the UK."

Impressums Jewellery will be pro-

filed by the campaign on November 23 as part of the 100-day countdown to Small Business Saturday UK.

Michelle Owens, director of Small Business Saturday UK, added: "Small businesses are the nation's favourite businesses - bringing immeasurable value to our local communities and powering the wider economy."

"Firms like Impressums Jewellery in this year's SmallBiz100 represent some of the UK's most-loved small businesses."

"It is so important that we encourage public support for small businesses up and down the country, as many are still facing a host of challenges as they enter this critical final stretch of the year."

Lauren Winnett's Leamington-based jewellery business has been recognised in this year's SmallBiz100 line-up.



Start counting down to festive season with wreath-making workshop

A FLORIST whose creations have been featured at Buckingham Palace is inviting people to kick off the festive season with one of their wreath-making workshops at a Leamington hotel.

Alison Gainsford, who supplied flower arrangements for the late Queen Elizabeth II's Christmas Day speech in 2012, is hosting her own two-hour workshop at

Mallory Court Hotel and Spa on November 21 at 10am.

Guests will be taken through the stages of how to create a door wreath using a wire frame, eucalyptus foliage and various decorations such as baubles, pinecones and dried flowers.

Guests will then be treated to an afternoon tea in the hotel's restaurant, The Warwick,

which is overseen by executive head chef and MasterChef: The Professionals winner, Stu Deeley.

Alison has been a florist for more than 35 years and is currently the in-house florist for Mallory Court, and sister hotels The Arden in Stratford, and Brockencote Hall Hotel near Kidderminster.

She said: "We held the workshop for the first time last year

and it was a 'blooming' success, so we have decided to bring it back again as a fun and relaxing opportunity for people to kick off their Christmas celebrations."

"It's a great way for friends, couples, and family members to unwind and design their own door wreath from scratch - with some help from myself - along with a glass of mulled wine."

"What's more - guests will get to take their own wreath home with them to hang on their own front door, where it can take pride of place for many years to come."

For more information about the wreathmaking workshop, and to book, visit the website at www.mallory.co.uk/festive-wreath-making-workshop

INTERNATIONAL METALS & CABLE RECYCLING LTD

We purchase all Ferrous and Non Ferrous Metal Batteries and Cables

Collection Service Available

Long Marston Road, Long Marston, Stratford Upon Avon, Warwickshire, CV37 8AQ

01789 721 288

david@imrltd.co.uk

Open Mon/Fri - 8am - 5pm

*Ceremonies in
Warwickshire*

Warwickshire Wedding Showcase

Sunday 23 November 2025, 11 am - 3pm
The Old Shire Hall, Northgate Street, Warwick

Warwickshire Registration Service is celebrating 30 years of ceremonies at Licensed Venues.

From castles to charming country houses discover the wide range of Warwickshire licensed venues for weddings, civil partnerships, vow renewals, and naming ceremonies.

Meet local suppliers and our friendly Warwickshire Registration team who can help bring ideas for your special day to life.

Book your free place www.warwickshire.gov.uk/weddingshowcase

FREE

car parking available at Cape Road car park, just a short walk away from the venue

For more information on getting married in Warwickshire visit
www.warwickshire.gov.uk/ceremonies



Photo credit: The Corbett Creative Photography

Council saluted for armed forces policy

RUGBY Borough Council has been awarded the Armed Forces Covenant's Employer Recognition Scheme silver award.

by **Andy Morris**
andy.morris@bullivantmedia.com

The Employer Recognition Scheme (ERS) recognises employers which offer exceptional support to the armed forces community and go 'above and beyond' to deliver the pledges of the Armed Forces Covenant.

Organisations which sign up to the covenant promise to recognise the unique obligations of – and sacrifices made by – serving members of the armed forces, ex-service personnel and their families.

The covenant aims to ensure all members and former members of

the armed forces face no disadvantage compared to other citizens in the provision of public and commercial services, while giving special consideration to individuals who have been injured or bereaved.

The council secured the ERS bronze award in 2024 and refreshed a number of its recruitment and general leave policies to qualify for the silver award.

Changes include ensuring job applicants who serve, or have served, in the armed forces – and their families – must be offered an interview if the application meets all of the role's essential criteria.

The council now offers additional annual leave to reservists, while staff who volunteer at cadet forces now qualify for up to five days of additional leave.

The council has also committed to considering all requests for flexible working, emergency leave or unpaid leave from staff whose partner - or family member - has been deployed.

Coun Maggie O'Rourke, the council's portfolio holder for partnerships and wellbeing, visited the National Memorial Arboretum in Staffordshire to receive the ERS silver award from Lieutenant Colonel Keith Spiers, head of engagement at the Army Headquarters Centre.

She said: "The Employer Recognition Scheme silver award



Coun Maggie O'Rourke visited the National Memorial Arboretum to receive the council's Employer Recognition Scheme silver award from Lieutenant Colonel Keith Spiers.

demonstrates Rugby Borough Council's commitment to building on the principles of the covenant by ensuring we're a forces-friendly organisation which not only values the service of members of the armed forces, but also recognises the value of employing members and former members of the forces, who bring unique skills and experience to the

workplace." Her Liberal Democrat counterpart Coun Neil Sandison added: "We welcome the progress the council has made this year on the Armed Forces Covenant's Employer Recognition Scheme, gaining a silver award."

"We hope this and other awards indicate a positive response to ex-service people and their families."



Father Christmas and Myton staff will spread cheer at the two festive events.

Hospices countdown to festive fundraisers

A HOSPICE charity is inviting the community to join festive celebrations at its upcoming Christmas events in Rugby and Coventry.

The Rugby Myton Hospice Support Group's Christmas Bazaar will be held from 10am to 1pm on Saturday November 29 at the Rugby Myton Support Hub.

Festive gifts such as books, bric-a-brac, crafts, cakes, toiletries and

Christmas hampers will be on offer, and tombolas and a raffle will be held. Visit www.mytonhospice.org for more information.

The Coventry Myton Hospice will host its Christmas Fayre from 10.30am to 1pm on Saturday December 6.

Visitors can browse festive stalls offering gifts, hampers and toiletries, and

enjoy family-friendly games, food and refreshments.

The event will feature performances from the Myton Choir, a local dance school and other entertainment, as well as a gift tombola and a visit from Father Christmas. Visit www.mytonhospice.org for more details.

The charity's community fundraising manager Rachael Ryan said: "We're looking forward to wel-

coming everyone into our hospices in Coventry and Rugby this festive season. We'd like to thank the Coventry Myton Support Group and Rugby Myton Support Group for their amazing efforts to raise vital funds year after year."

This year, The Myton Hospices need to raise \$12.7million to continue providing services free of charge.

Transform your Kitchen in less than a day

with a stunning quartz stone that neatly fits over your existing worktop



Upgrade your Kitchen the smart way – with Quartzize

Bring the beauty of natural quartz into your home with Quartzize – the smart, affordable way to upgrade your kitchen! Quartzize worktops fit straight over your existing counters – no mess, no fuss, no expensive refit. Get the luxury look of solid stone for a fraction of the price! Choose from 25 stunning quartz finishes – there's something

to suit every style. And the best part? It can all be fitted in less than a day*!

Don't miss out – call now or visit our website to book your free quote.

Quartzize – why replace your worktop when you can simply overlay?



Order now,
in time for
Christmas

WINTER OFFER
FREE SINK
WORTH £229**

2 YEARS' interest-free credit*

FREE SURVEY • FREE DESIGN • FREE QUOTE
FULLY FITTED • NATIONWIDE SERVICE

AS SEEN ON TV
★★★★★
MADE IN THE UK

Over 30 years experience
Family run business

QUARTZIZE Bring the sparkle back to your kitchen with a stunning Quartzize overlay

Our friendly and helpful team are awaiting your call!...

02476 101914 • 01926 800726 • 01788 422326
quartzize.co.uk

Scan the QR code to jump straight to our website...





Lines Open: Mon – Fri: 8.30am – 8pm, Sat: 8.30am – 6pm, Sun: 9am – 5pm

*Subject to status. Terms and conditions apply. **Limited period promotional voucher. Terms and conditions apply.

Ready for some Christmas Cheer

★★ NOW AVAILABLE ★★

BUY NOW PAY LATER

SPREAD THE COST OF YOUR NEW KITCHEN

Transform today, pay later.

CALL FOR DETAILS

...with nothing to pay until next year!

At Joe's Doors, we can give your kitchen a brand new look – without the mess, stress or massive price tag.

With no ripping out or emptying of cupboards, we replace your existing doors, panels and trims to completely transform your kitchen – often in just **two days**.

Choose from a huge range of stylish designs and enjoy a stunning new space that feels like a Christmas miracle – because it kind of is.

- ★ **Transform today, pay later** – with **Buy Now Pay Later** finance
 - ★ **Free design, free quote, free survey**
 - ★ And absolutely **no pressure** – just **Joe's honest advice**
- Ready for some Christmas Cheer?

Book your free visit today with Joe's Doors – and fall in love with your kitchen all over again.



AS SEEN ON TV



✓ NO NEED TO EMPTY CUPBOARDS ✓ NO MESS, NO FUSS ✓ FITTED IN A DAY OR TWO ✓ MADE TO MEASURE



QUARTZIZE

Complete the look with a natural stone overlay from Quartzize

Why replace your worktops when this unique quartz overlay simply fits over your existing surface. Here are some of the amazing benefits:

- **Timeless** – Looks clean and modern.
- **Hygienic** – A perfectly smooth surface.
- **Easy care** – Wipe with a neutral cleaner.
- **Durable** – Tough and scratch resistant.
- **Easily Installed** – Fitted in less than a day.



*Unlimited period promotional voucher. Terms and conditions apply.

Three easy steps to transform your kitchen:

- 1** We'll pop along and take some measurements...
- 2** Choose from our range of doors and worktops...
- 3** Our fitters will come back and transform your kitchen.

JOE'S DOORS & OVERLAYS



02476 101914 • 01926 800726 • 01788 422326
joesdoors.co.uk

Lines Open: Mon - Fri: 8.30am - 8.00pm, Sat: 8.30am - 6.00pm, Sun: 9.00am - 5.00pm. Over 30 years experience.



XMAS OFFER

FREE SINK WORTH £229*

Present this voucher to our Home Consultant on the day of your survey.



Museum secures medieval treasure

MEDIEVAL treasure discovered by a metal detectorist in a field near Birdingbury has been acquired by Rugby Art Gallery and Museum.

by **Andy Morris**
andy.morris@bullivantmedia.com

A gold and silver penannular brooch, believed to date from around AD 800, was unearthed in February 2023 and was declared 'treasure' under the Treasure Act 1996 due to its age and precious metals content.

But thanks to a grant from the Arts Council England/V&A Purchase Grant Fund, Rugby Art Gallery and Museum has now acquired the brooch, which has gone on display at the Little Elborow Street venue's Local History Gallery as part of the exhibition A History of Rugby in 50 Objects.

The metal detectorist found the brooch in four fragments, with a pair of pieces comprising part of the brooch's silver frame – complete with inlaid gold decorative plates – and the other pair of fragments forming part of its silver pin.

Both the brooch's form and its gold filigree decoration suggest a connection with the Celtic metalwork produced in Ireland from the sixth to ninth centuries AD.

Coun Maggie O'Rourke, Rugby Borough Council portfolio holder for partnerships and wellbeing, said: "We're delighted Rugby Art Gallery and Museum has been able

to acquire this significant find for the borough's local history collection, thanks to a generous grant from the Arts Council England/V&A Purchase Grant Fund.

"Together with the Tripontium collection which was recently donated to the museum on a permanent basis by Rugby Archaeological Society, it's been a wonderful few weeks in Rugby Art Gallery and Museum's 25th anniversary year."

The Arts Council England/V&A Purchase Grant Fund was established at the Victoria and Albert Museum (V&A) in 1881 to help regional museums, record offices and specialist libraries acquire objects relating to the arts, literature and history.

Each year, the fund awards grants to around 100 organisations, ena-



The gold and silver brooch which was found by a metal detectorist

bling acquisitions of more than £3million.

Leanne Manfredi, national programmes lead at the V&A, said: "The Arts Council England/V&A Purchase Grant Fund supports the purchase of a wide range of material for the permanent collections of non-nationally funded organisa-

tions in England and Wales. We are delighted that this early medieval gold and silver penannular brooch, found in Birdingbury, has been acquired by Rugby Art Gallery and Museum. It will benefit audiences for years to come."

Visit www.ragm.co.uk for more information about exhibitions.



The Ghost Train will be running in Rugby town centre this weekend.

Ghost Train adds to town's Halloween activities

THE GHOST Train is stopping in Rugby town centre this weekend as a variety of Halloween activities comes to town.

The novelty train ride will depart from the top of Sheep Street between 11am and 4pm on Saturday (November 1) and Sunday (November 2), taking in Halloween and Day of the Dead-themed installations

along the way. Spooky stories will also be told at Rugby Theatre throughout the weekend.

Halloween-themed story walks will take place from Friday (October 31) to Sunday (November 2), during which participants can discover tales from the town's past and some of the ghostly characters who may or may not still be

around. Fun craft activities take place on Saturday and Sunday at the Rugby Hotel, including painting and hat-making.

Fancy dress is encouraged, with prizes for the best costumes.

Rugby First business director Linda Lowne said: "This year for Halloween we have some great activities lined up for families

and adults in the town centre and we hope you will not be too scared to join us.

"Don't forget although most of the activities are free and can just turn up on the day some will still need to be booked in advance."

Visit www.rugbyfirst.org for the full programme of activities, dates, times and booking information.

VERTICAL **ROLLER** **VENETIAN**

ROMAN **SHUTTER** **INTU**

10 YEARS WARRANTY ON SHUTTER BLINDS

Available in beautiful and stylish Hard Wood and Faux Wood

WE WILL BEAT ANY LIKE-FOR-LIKE QUOTE

Visit us at: 21 Brixham Drive, Coventry, CV2 3LA
Email: info@brixham-blinds.co.uk

Contact us today for a **FREE** no-obligation quotation

T: 02476 666686 brixham-blinds.co.uk

BRIXHAM

BLINDS

Residential and Commercial

Brixham blinds are a well-established blinds company offering to trade and consumer. With a great range of quality bespoke and made to measure blinds by an established blind company you can trust.

Whether you're thinking of vertical blinds, roller blinds, venetian blinds or roman blinds, shutter blinds, all of our blinds come with child safety regulations and fittings to make sure your home is safe.

Council votes to give Red Roses highest honour

by **Andy Morris**
andy.morris
@bullivantmedia.com

WORLD champions and grand slam winners from the England Rugby Women's Team will be awarded the Freedom of the Borough by Rugby Borough Council.



The England Women's Rugby World Cup team of 2014 were awarded the Freedom of the Borough of Rugby that year.

Councillors voted to bestow the award – the highest civic honour that can be given by the council, recognising outstanding contributions to the community – following the Red Roses' victory at the Rugby World Cup last month.

Coun Maggie O'Rourke, Rugby Borough Council portfolio holder for partnerships and wellbeing, said: "As the home town of the sport, it is with great pleasure that we have agreed to confer the Freedom of the Borough to the women who have achieved such a remarkable feat, no doubt inspiring generations

to come. Watching the Red Roses win the World Cup, on home turf in Twickenham, with a grand slam made us all immensely proud.

"With the team now the highest-ranked in the world, we wanted to honour such dedication and achievements."

Rugby Borough Council previously installed the Raise The Trophy statue, designed by artist Tony Davies, to celebrate England hosting the Women's Rugby World Cup, and the fifth sculpture to commemorate the town's sporting heritage.

Coun Neil Sandison, the borough council's Liberal Democrat spokesperson for partnerships and wellbeing, said: "Having watched all the games, there is no doubt the excellent English Roses exemplified teamwork at its best.

"It is only fitting that all team members and staff are honoured by the borough for their contribution to the game of Rugby Union, the rules of which were first adopted and practised in our town."

This is the third time the England team has won the championship, following their triumph in 2014 over Canada, for which the team was also awarded Freedom of the Borough, and in 1994 against the United States of America.

If accepted by the team, the Freedom of the Borough will be conferred on the Red Roses at a special ceremony on a date to be agreed with the Rugby Football Union.



Staff and students said the donation would help bring their vision for the courtyard to life.

Donation backs students' project

RESOURCEFUL students at a Rugby secondary school are set to transform an unused courtyard after they secured funding for the project.

Rugby High School has received £1,000 from Persimmon Homes as part of its Community Champions initiative.

The school's Senior Student Leadership Team applied for the funding to revamp the school court-

yard into a space where students could better interact with each other.

Assistant head teacher and head of sixth form Olga Dermott-Bond said: "The students had the vision for the courtyard and have taken it upon themselves to write to all local businesses to seek financial support.

"We were delighted Persimmon Homes came forward and offered us

this generous donation.

"We are starting to see the students' vision come to life and are extremely grateful to all those who have offered us support."

Beth Lodge, senior sales manager at Persimmon Homes Central, said: "We seek to contribute to local charitable causes where we are building homes and creating lasting legacies within communities."



OPEN 7 DAYS
CV6 5EY

OUR BIG SALE IS STILL ON

INFLATION EVERYWHERE - BUT NOT AT CARPET MILL!

Everything is going up in price, the same for Carpets and this is why it pays to go to Carpet Mill. Manufacturers of yarn and other materials for making carpets have all had price rises and some manufacturers are busy changing their specifications to many ranges to compensate. They also get surplus rolls that they cannot sell to the big stores as they don't have enough stock left to service them.

Therefore, we are buying those rolls at a **FAT DISCOUNT** and passing it on to **YOU**.



Everything Reduced BE QUICK

BRAND NAME CARPETS AT LOW LOW PRICES

From quality Axminster to budget cord
We are recommended for our low prices, quality service and extensive range throughout the Midlands. There are no R.R. prices on carpets, so if others give 50% offers or sales discounts, is it 50% off their normal high prices. ALWAYS compare with Carpet Mills normal prices!!!!!!!

CARPET MILL

CROMWELL STREET (OFF RED LANE) COVENTRY CV6 5EY TEL: (024) 7666 1985

SOME CUSTOMERS TRAVEL MILES - YOU DON'T HAVE TO - WE ARE HERE

www.salecarpet.uk



Water tower built...thanks to tap dancing

MORE than 400 pupils at a school in Zambia have access to a hygienic water supply for the first time, thanks to proceeds from Warwickshire dance shows.

by Philippa Mingins

Hammes Kanondo, director at the Lukkumano Christian Academy, said: "The government has been pushing for better hygiene in schools across the country – for students and staff to have access to clean water and flushing toilets.

This water tower is the start of this at Lukkumano. we will soon have water-borne toilets and students will also be able to shower after PE lessons.

"We are a school that, at present, is solely supported by donors and so we are very thankful to everyone who has given to make this project happen."

Viv said it was a privilege to be associated with the project.

"Our dance students are really thrilled that they can make a positive and pretty instant impact for this school, which now has instant clean running water, sanitation and flushable toilets," she added.

"What we see as a little, can go a very long way in this community."

The visits to Kenya and Zambia through Feed The Hungry, also allowed the couple to be introduced for the first time to the new \$30,000 school block funded by Gavin's 200-mile coast-to-coast trek between St Bees Head in Lancashire and Robin Hood Bay in Yorkshire, last year.

The children at Lukkumano School in Mazabuka come from very poor homes. Some of these children, orphaned by the AIDS pandemic, live with relatives for whom putting food on the table is a continual challenge.

Such are the numbers of children at the school that teaching time for each child had been halved due to lack of space and facilities.

But the new Gavin Kibble Block, opened in August last year, means an additional 200 students can now be accommodated, meeting the criteria to qualify for additional government funding of teachers.



The new water tower is providing pupils at Lukkumano School in Zambia with a hygienic water supply for the first time.

Autumn
SPECIALS

50% OFF Kitchens

Nothing to pay until 2026
Rep % APR: 19.9%. Authorised and regulated by the Financial Conduct Authority

Independent Retailer of the Year

LIMITED OFFER
Free flooring
(excludes fitting)



"So pleased with my Aristocraft kitchen, can't fault them."



Leamington Spa showroom
103 Warwick Street
Leamington Spa
CV32 4RJ
01384 262710
www.aristocraft.me



THE BED FACTORY

Trading since 1989
3 floors full of beds (We are bigger than we look)

Specialists in mattresses for people
with back, shoulder and hip pain

Attention Arthritis sufferers



In pain with your back ?

Many people don't realise just how much their mattress can affect aches, stiffness, and overall pain, especially in the back.



Around one in six adults in England experience back pain (lasting 3+ months) at any given time.

In Warwickshire alone, it is estimated that 96,531 people suffer from back pain, that's about 17.6 % of the population.

Of those, 60,167 are estimated to have severe back pain in Warwickshire .

WHY WAIT? COME IN STORE TODAY OR CALL US ON

01926 426405

Leamington's Largest Independent Bed Retailer

We can supply a large range of beds in 1 to 2 weeks - 3' Single Beds also available - WE SUPPLY WHEN OTHERS FAIL

139 Regent Street, Royal Leamington Spa, CV32 4NX

01926 422404

sales@thebedfactory.co.uk
and www.thebedfactory.co.uk

★ Trustpilot ★★★★★

The Technical Training Centre is located near the company's Heathcote Way headquarters in Warwick.



New centre hopes to train the next generation

DENNIS Eagle, which designs and manufactures refuse collection vehicles has opened a state-of-the-art new training centre in Warwick.

The Technical Training Centre, located near its Heathcote Way headquarters, is seen as critical for the future of the business which can trace its roots back to 1907 when the Eagle Engineering Co began making engines. Dennis Eagle was formed when Eagle Engineering and Dennis Specialist Vehicles merged in 1971.

Alongside the Technical Training Centre, the new building also houses a practical area, display area, and a customer handover space.

The expansion is anticipated to create several new jobs in the area, including roles for engineers, technicians, training, and administrative employees.

Managing director Keith Day said: "As well as increasing the space required to support production growth, it will allow us to showcase our world-class vehicle capability through interactive presentations, practical activities, and engaging environments, enabling customers to get hands-on with our products in a safe and controlled way."

"As the UK's leading provider of innovative RCVs and specialist vehicles, this new building further demonstrates our commitment to investing in Warwick and the UK, supporting new jobs in the area, providing a positive boost to the economy, and continuing our vital work towards creating safer, cleaner communities."

Dennis Eagle employs more than 1,000 staff. It has UK production facilities in Warwick and Blackpool.

Get ready for awards

ENTRIES open shortly for The Coventry & Warwickshire Business and Community Awards 2026.

The awards, presented by the Coventry and Warwickshire Chamber of Commerce, attracted hundreds of entries in their first year and the celebration event was enjoyed by more than 600 people from business, civic life and the wider community.

Entries for the ten award categories close on November 28 before being independently judged. The Awards Celebration Evening will take place on April 23 at the Belgrade Theatre in Coventry.

Categories include:

- The People First - Commitment to Workforce Award
- The Global Player - Export Business of the Year Award
- The Planet Saver - Green Business of the Year Award
- The Rapid Riser - Start-up or Scale-up Business of the Year Award
- The Problem Solver - Business Diversification Award
- The Equality Trailblazer - EEDI Business of the Year

Award · The Community Champion - Community Business of the Year Award

· The Not-For-Profit Champion - Community Organisation of the Year Award

· The Creative and Culture Activator - Creative and Cultural Award

· The Inspirational Individual - C&W Businessperson of the Year Award and Community Person of the Year Award

Corin Crane, chief executive of Coventry and Warwickshire Chamber of Commerce, said: "Our inaugural event earlier this year was a true celebration of so much that is great about our region.

It was more than an awards night - it brought people together and showed off so many of the amazing businesses, community groups, culture and entertainment that we have to offer.

"So, if you thought about entering last year and didn't get round to it, make sure you do so this time round. And, if you were part of it the first time round you know you don't want to miss out this time."

Visit www.cw-chamber.co.uk/awards for more information on the awards.

THE JONES FAMILY JEWELLERS

Important Announcement from The Jones Family Jewellers

We're holding our prices until the 5th of January across all our stock in Kenilworth & our two stores in Leamington Spa.

With the recent sharp increases in gold and silver prices, along with upcoming government tax rises, we will unfortunately need to adjust our prices from January 5th onwards.

Although prices have risen significantly, and we realistically should have made this change already - we've chosen to keep our prices steady through Christmas to help our valued customers during the festive season.

Visit us before January 5th to take advantage of our current prices.

The Jones Family Jewellers - exceptional service, honest value, and timeless craftsmanship

SATCHWELL WALK,
LEAMINGTON SPA
01926 882552

TALISMAN SQUARE,
KENILWORTH
01926 954271

ROYAL PRIORS,
LEAMINGTON SPA
01926 893393

WWW.TJFJEWELLERS.CO.UK



FOR APPOINTMENTS EMAIL: ENQUIRIES@TJFJEWELLERS.CO.UK

PROFESSIONAL
JEWELLER
— Awards 2025 —
RETAIL TEAM
WINNERS 2025

HOLLOWAYS

A U C T I O N E E R S

EST. 1972

In Association with **Hansons Auctioneers**

Warwick Antique & Jewellery Valuation Day

Monday 3rd November

12pm to 2pm

Valuations of Silver, Jewellery, Watches, Gold, Antiques and General Collectables.

Items may be left to be consigned into Auction

**The Racehorse,
34 Stratford Road, Warwick,
CV34 6AS**

Donations in aid of WCS Care



Free Home Visits | Estate Clearances & Downsizing

If you have a lot of items you want valuing, we offer a **FREE** home visit service where we can come to your home. Contact us for more info

T: Hansons Warwickshire 07470 459309

E: clivejones@hansonsauctioneers.co.uk

www.hansonsauctioneers.co.uk



Hansons Holloway's, Banbury, Oxfordshire, OX16 5NB

Keep it scary - but keep it safe

HALLOWEEN fans might be in for an unwelcome scare if they use makeup products from last year, a beauty expert has warned.

Beauty and wellness experts on the Fresha Marketplace (<https://www.fresha.com>) say that people who keep last year's Halloween makeup in storage for a year could be in for a fright.

They said: "Many people keep cosmetics far beyond their safe use-by dates and may unknowingly find themselves reaching for expired products when creating their Halloween look."

"That's because they've purchased products to use this time last year and then put them in storage as they are different from those they use day to day."

They revealed that mascara and liquid eyeliner are the makeup items most likely to harbour harmful bacteria - and warn that they should be replaced every three months to avoid infections.

The experts said: "These products may include tinted mascaras and liquid eyeliners, cream products like face paints or eyeshadows, and dark liquid lipsticks. It's likely that only a small amount of these products was used at Halloween, and so we put the remainder aside to use later and not feel wasteful."

Mascara and liquid eye products pose the highest risk, as the experts explain: "Mascara tubes are warm, moist environments that bacteria love. Each time you pull the wand out, you're exposing the product to air and potentially introducing



new microorganisms when you put it back in. Even if you've only used the mascara once or twice, it's still exposed to bacteria."

The beauty specialists explain that mascara should always be replaced every three months regardless of how much product remains. Tell-tale signs it needs binning include a change in smell, dryness, or clumping.

"Lip products come into direct contact with your mouth, making

them particularly prone to contamination", the experts say. "It's likely that you've purchased a darker lip shade for a Halloween look than you'd wear normally and are planning to reuse it again this year. However, it's not safe to do so."

Liquid lip products like gloss need replacing every six months, while traditional lipsticks can last up to a year if stored properly. Signs of expiry include changes in texture, separation of ingredients,

or an unusual smell.

Makeup sponges also harbour bacteria. "Your makeup sponges and brushes collect not just bacteria but also dead skin cells, oil, and product residue," the beauty experts warn. "They should be washed weekly at minimum and replaced every three months."

Consumers often underestimate how quickly these tools become contaminated. A grimy sponge can transfer bacteria directly onto skin,

potentially causing breakouts.

"Foundation and cream products also deteriorate faster than you think. Liquid foundations, especially those in pump bottles, can last up to a year, but products in jars where you dip your fingers repeatedly need replacing every six months. This packaging type is very common among the face paints used for Halloween looks."

Signs a foundation or cream product has expired include separation, change in colour, or an off smell. While using clean tools rather than fingers can extend the lifespan of these products, it's safer to scrap any from last year and start again.

While powder products have the longest shelf life, any that were purchased this time last year still need to be thrown away. "Powder eyeshadows, blush, and bronzers contain less water, making them less hospitable to bacterial growth. These can typically last 12-24 months if kept clean and dry. However, using wet brushes or sponges on powder products creates a breeding ground for bacteria."

Fresha experts aren't the first to highlight these concerns. Government regulations require cosmetic products to display a Period After Opening (PAO) symbol - the small jar icon with a number and the letter 'M' indicating how many months the product remains safe after opening.

The PAO symbol is mandatory for products with a durability exceeding 30 months. Products with shorter shelf lives must display a 'best before' date instead.

OFTEN IMITATED BUT NEVER EQUALLED

While all costs are going up - OURS ARE STAYING DOWN

Due to our customer friendly services of No Door Salesmen, No Showroom and little overheads



NEW FLUSH WINDOWS

BEAUTIFUL COMPOSITE DOORS
Fully fitted
Competitive Prices



UPTO 30% OFF ALL WINDOWS



ALL PRODUCTS HAVE A 10 YEAR INSURANCE BACKED WARRANTY

BILL MOORE'S WINDOWS AND DOORS
A NAME YOU CAN TRUST

1 Brookside Close, Stratford-upon-Avon, Warwickshire CV37 9PL

01789 415171 • 07729 689239 • www.billmooreswindowsanddoors.co.uk

Review

Bard's darkest play gets gritty and brutal treatment at RSC

Macbeth
RSC, Other Place

A barren, unwelcoming sports bar or social club somewhere on the fringes of Glasgow's sectarian underbelly is hardly the ideal place for a night out and certainly on the face of it not somewhere you'd expect to find a gem as polished as this.

But Daniel Raggett's gritty, visceral staging of this perennially dark play has the style and panache to take such an earthy theme and stay with it all the way through. The RSC has staged a multitude of terrific Macbeth's down its many years but few could match this for closeness and sheer brutal realism.

We're in gangland central and the back-stabbing street wars are fought not with claymores but with clawhammers, Stanley knives and baseball bats. Harsh environments breed harsh people and the whole company gets stuck into a vibe a few degrees to the bad side of Taggart.

Characters are chopped wholesale and lines unceremoniously condensed in the pursuit of an immediacy and a clarity of purpose which really makes this production



appeal. This is one of Shakespeare's most action-packed plays with the action turned up even higher.

It doesn't stint on the brutal either. Death comes right there on the pub floor and not at the end

of the traditional long sword. The sight of children being led into a darkened room by someone holding a hammer pushes the reality of the murderous nature of the play firmly into the horribly real.

Set inescapably within this awful place, Sam Heughan's Macbeth is an imposing figure, physically dominant but exhibiting all the inner doubts and instabilities which make the character one of the Bard's most notably three dimensional figures. Hard Glaswegian but with a softer edge, it's a performance which brings a refreshing touch in many areas and is only occasionally undermined by an insistence on adding stage business where words would suffice.

Perhaps the greatest shift in character lies with Lady Macbeth. Lia Williams has the same hard edge when needed but the drop to her inner persona and the vulnerability not normally so evident is vast. Shelving the accepted norm, she is present at more key moments and exhibits an unexpected tenderness in the face of ruthless violence which turns the normal dynamic of the couple on its head. In a truly shocking innovation she also does not die offstage and her exit is an image that will remain with audiences for a long time.

The company excels throughout. Strong accents and vivid characterisations, with perhaps a special mention for Michael Abubakar who

handles the concatenation of roles perfectly and seems to be a lurking presence throughout.

Neatly designed by Anna Reid within this most intimate of spaces has some brilliant detail, from the cheap clothes and fish-supper banquet to the tiny black and white TVs high up on the pub wall. Only the extended blackouts with music far too loud sound a clashing note.

This is Shakespeare for the violent film generation and, while the setting and style all transfer well, the production also sees fit to ape the movie music underscoring so ubiquitous on big and small screen.

Macbeth's encounter with his wife in which the murderous plot first emerges is given a brooding drone which virtually screams 'this is tense' as if the words of Shakespeare which have managed to say exactly that for hundreds of years are no longer enough.

Underscoring is becoming this season's vogue at the RSC and it's perhaps time that a memo went round to all to trust in the man who wrote the play to tell the audience how they should be feeling.

Matthew Salisbury

JustGo!
Holidays

★ ★ ★ ★ ★ Trustpilot

By Coach from Coventry, Rugby

Reader Travel

Observer



LIVERPOOL & MANCHESTER CHRISTMAS MARKETS

Departing Sat 13 Dec '25

Experience the charm of Liverpool and Manchester's enchanting Christmas markets and wander through glowing stalls of quirky keepsakes and stocking fillers. Why not delight in some tasty treats while sipping on delicious aromatic mulled wine?

SO MUCH INCLUDED...

- ✓ Return coach travel from Rugby, Coventry
- ✓ Overnight stay at a selected hotel (JG2 or JG3 rating) with breakfast
- ✓ Visits to Liverpool & Manchester Christmas markets

▶ **SAVE £10 - Quote OSG**
- Book by 14 Nov 2025

2 Days by Coach **only £109**

Single Supplement £40



CHRISTMAS IN BOURNEMOUTH, SALISBURY & THE NEW FOREST

Departing Tue 23 Dec '25

Celebrate Christmas in the traditional seaside resort of Bournemouth, featuring a lovely lunch with all the trimmings! We also enjoy included excursions, with Christmas Eve spent amid the magical landscapes of the New Forest and a Boxing Day trip to Salisbury.

SO MUCH INCLUDED...

- ✓ Return coach travel from Rugby, Coventry
- ✓ 4 nights at the Selected hotel, Bournemouth (JG2 rating) with dinner & breakfast. Christmas Day includes breakfast, a traditional Christmas lunch & a light evening buffet
- ✓ Welcome drink
- ✓ After-dinner tea & coffee
- ✓ Light entertainment every evening
- ✓ Excursions to the New Forest (Lynton & Lyndhurst) & Salisbury

5 Days by Coach **only £419**

Single Supplement £150



LLANDUDNO CHESTER & SNOWDONIA

Departing Mon 23 Feb '26

The highlights of North Wales await on this great-value break, where we're based on the seafront in Llandudno and take in the stunning landscapes of Snowdonia. We also cross the border to discover Chester, with its medieval 'rows' and fascinating museums.

SO MUCH INCLUDED...

- ✓ Return coach travel from Coventry
 - ✓ 4 nights at the Grand Hotel, Llandudno (JG2+ rating) with dinner & breakfast
 - ✓ Entertainment some evenings
 - ✓ Excursions to Snowdonia (Betws-y-Coed & Conwy) & Chester
- Optional excursion to the Isle of Anglesey (£15pp)

5 Days by Coach **only £279**

Single Supplement £100



For more information, or to book, please call

03332 342 514 Quote **osg**

033 numbers are free within inclusive minutes packages otherwise standard rates apply.

or visit us online at

justgoholidays.com/OSG

justgohols

These packages are subject to JustGo Holidays terms & conditions. Coach bookings are protected by Bonded Coach Holidays & the Association of Bonded Travel Companies (TUCs Ltd. All holidays are ATOL protected No. 2089. Prices are per person based on two people sharing a room & rounded up to the nearest whole number. All other charges are per person. Prices may fluctuate. Call on 0333 342 514 for more information. All packages are subject to availability. Prices are correct as of date of publication and may vary in our supplement. Please see website for full details.

SILVER JEWELL
BRITISH TRAVEL AWARDS
2024
BEST COMPANY
UK COACH/TOURING HOLIDAYS
ABTOT
Member 7032

On their bike for Cycle September

by **Philippa Mings**
 philippa.mings@bullivantmedia.com

SADDLED-UP residents in Warwickshire cycled just under three times around the earth during Cycle September.

They got on their bikes last month and chose active travel for work and leisure, clocking up an impressive 73,237 miles.

That's 2.9 times the distance around the circumference of the planet.

The feat was prompted by Warwickshire County Council's ongoing partnership with the Love to Ride cycling app, which gives residents, businesses and community groups access to the best rewards and resources that encourage cycling for travel, not just leisure.

Cycle September is Love to Ride's global bike-riding event, bringing together riders of every level to promote the benefits of bicycles. The campaign is a great opportunity for communities, businesses and individuals to engage in a fun challenge that will help them meet their health, wellness, and sustainability goals.



WCC's transport spokesperson Coun Jennifer Warren said: "The benefits of active travel, particularly travelling by bike, are huge, both for the individual and for our wider environment.

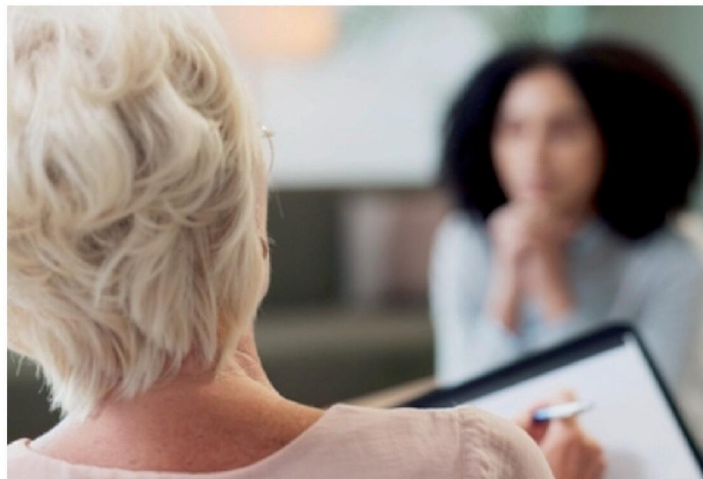
"For many of us, it might seem difficult, and perhaps daunting, to know where to start as travelling by car, even for short journeys, has become so engrained in our daily lives.

"We are committed to supporting residents to realise that they can start their active travel adventure by switching just one car journey every week to an active alterna-

tive such as cycling and we hope that this partnership with Love to Ride will offer residents a fun and engaging way to get into cycling and encourage their friends, family and colleagues to get on their bikes too.

"I would like to say thanks to all the cyclists and workplaces who took part in Cycle September and a big well done to those workplaces who came top of their respective leaderboards for the month."

September cyclists in Warwickshire pedalled more than 73,000 miles. Picture WCC.



Workshops to help county carers

CARERS in Warwickshire are invited to a series of workshops which aim to provide them with better support.

Warwickshire County Council (WCC) and Caring Together Warwickshire are holding the workshops for anyone who is providing unpaid care to a loved one.

The sessions aim to provide practical support, and give carers a chance discuss their experiences.

Coun Anne-Marie Sonko, WCC spokesperson for Adult Social Care and Health, said: "It is a priority for the county council to engage with as many carers as possible to gather local feedback about their experiences as well as provide information to them about the support that is available.

"Warwickshire County Council and Caring Together Warwickshire want to understand

how to better support carers across the county to ensure they feel empowered and supported in their caring role."

The following workshops take place from 10am to noon at Brunswick Healthy Living Centre, Leamington on Tuesday (November 4), Overslade Community Centre, Rugby on November 5 and The Harbour Centre, Bedworth on November 6.

Online workshops also take place on Monday (November 3) from 11am to noon, and November 4 from 1.30pm to 2.30pm and 7.30pm to 8.30pm.

Visit www.eventbrite.com/cc/carers-workshops-4746333 to book a place. Call 01926 742672 for more information.

Visit www.warwickshire.gov.uk/carers for more information about support for carers in Warwickshire.

Questions about care? We can help

We know moving into residential care is an emotional and difficult decision with lots to think about.

With over 30 years' experience, we can help you navigate the process of finding the right care home, so that you feel confident about the decision you make – whether that's choosing a WCS Care home, or one outside our group that's more suited to your needs.

If you've got questions about care, or one of our care homes, our Trusted Advisors can help.



Drovers House, Rugby

☎ 07802 728447

✉ p.rainsford@wcs-care.co.uk



**Westlands, Rugby
 Dewar Close, Rugby**

☎ 07802 728443

✉ j.rugg@wcs-care.co.uk



Stratford upon Avon School Sixth Form OPEN EVENING 2025



**SIXTH FORM
OPEN EVENING**
No booking necessary
WEDNESDAY 5th NOVEMBER
17:00 - 19:00

Looking for a Sixth Form where you are really known by your teachers?

Our average Sixth
Form class size is
13

www.stratforduponavonschool.com/sixth-form
Stratford upon Avon School, Alcester Road, CV37 9DH

Portable proof of veteran status just got a whole lot smarter...

DIGITAL veteran cards are available for ex-members of the armed forces.

The UK Government has launched a digital version of the HM Armed Forces Veteran Card that gives holders access to key services and discounts via their smartphones.

Applications are open, and once approved, people will be able to download the cards within minutes.

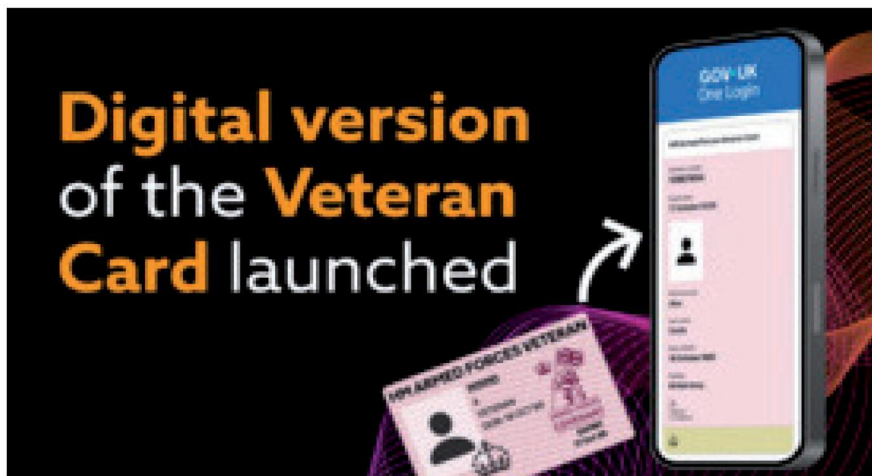
The digital card will allow former serving personnel a way to confirm their status in person and will include information already featured on their physical card - and will give show their veteran status to access everything from housing and mental health support to reduced entry at museums and money off their shopping.

The move forms part of government plans to deliver national renewal by transforming public services so they work around people's lives and not the other way round.

Veterans can download it via the GOV.UK One Login app, which, like banking apps, uses passcodes, Face ID, or Touch ID, providing the security veterans deserve whilst creating new opportunities to access services more conveniently.

Once set up, veterans simply open the app and show their digital card.

Minister for Veterans and People, Louise Sandher-Jones said: "Our veterans have given so much in service



to our country, and we must ensure they can easily access the support and recognition they are entitled to and deserve.

"This digital Veteran Card removes barriers and puts convenience back in their hands - whether they're registering with a new GP, seeking housing support, or simply getting a discount at their local museum.

"With 1.8 million veterans across the UK now able to benefit from this innovation, we're making good on our commitment to modernise services for our veteran community."

Veterans will be able to use the digital card to register their service background with their GP to access the healthcare opportunities they deserve with security and respect.

This can give them access to services in England such as Op Restore for physical health support and Op Courage for mental health and wellbeing.

They will also be able to confirm their military background to access supported housing through Op Fortitude - the Government's secure referral system and support service for ex-Service Personnel

who are at risk of or experiencing homelessness.

Get support into high value careers with Op Ascend - a free government-backed service linking them up with career advisors and veteran-friendly employers.

And access discounts and services offered by participating businesses with the security and convenience they deserve - in time for Remembrance Sunday.

Angela Kitching, director of campaigns, policy and research at the Royal British Legion, said: "We welcome the introduction of the digital HM Armed Forces Veteran Card as we do any initiative that helps to improve access to services and benefits for the Armed Forces community."

The fact that the digital ID card will enable veterans to access and use their card more quickly is a positive development."

The digital card is optional and will initially be available for in-person use, with functionality set to expand over the coming months to enable online use, further increasing convenience whilst maintaining security and creating new opportunities for veterans to access services.

The digital Veteran Card works alongside the existing physical HM Armed Forces Veteran Card, giving veterans greater flexibility and choice.



PRESTIGE DENTAL CARE
THE GENTLE DENTAL CENTRE

ACCEPTING NEW NHS PATIENTS EMERGENCIES THE SAME DAY

- Open till late and weekends
- Multi lingual teams (polish, romanian, arabic, mandarin)
- Male and female clinicians
- Nervous patients welcome
- 0% finance available
- Invisalign clear aligners from £2,300 per arch
- Dental implants from £1,800 per tooth
- Modern equipment and techniques



Invisalign clear aligners from £2,300 per arch

Modern Equipment and Techniques



Dental implants from £2,800 per tooth inc Crown

Gentle Dental Centre

318 - 320 Bell Green Road,
Coventry, England, CV6 7HB

Telephone: 0247668 7855

Website: <https://gentledentalcentre.co.uk>

Stop Compromising On Your Comfort

SAVE GIGANTIC BEDS & FURNITURE EVENT




EXTENDED FOR ANOTHER WEEK!

24th to 31st October

DON'T MISS OUT

rCh

BRAND NAME MANUFACTURERS

Beds & Furniture

HENLEY ROAD, COVENTRY

TEL: 02476 603254

Better Health • Better Sleep • Great Savings

Making sure you know where you stand with damp problems



WITH the winter months just round the corner, problems with damp and mould can become far more prominent.

Autumn is when many people turn on central heating systems and choose to close windows, preventing fresh air ventilation needed to allow damp air to leave a property.

Unfortunately, the combination of warm and damp air can promote the growth of mould, which can prove extremely detrimental to health.

Such problems can spread quickly and can be challenging to get rid of, so it is important to take mould seriously and know the signs.

What are the different types of damp?

- **Rising damp:** This occurs when moisture is drawn upwards from the ground through the masonry. Typically, properties have preventative measures built in to avoid this. However, this aspect of a building degrades over time and requires maintenance.

- **Penetrating damp:** This can be caused by a leaking external pipe or blocked gutters where water penetrates the fabric of a building from the outside. These are typically small and localised problems that can be easily fixed.

- **Construction damp:** Problems in how a property was designed and built can trigger this type of damp. Such issues should be remedied as soon as possible to prevent long term damage.

- **Condensation damp:** Because of a lack of insulation, ventilation or heating, this type of damp occurs when a property cannot deal with regular levels of water vapour. It is important to ensure constant ventilation across such areas to help prevent any spread of damp and mould.

The effects damp and mould can have on your health and what to do about it

The airways and the lungs breathe in the substances produced by damp and mould and thereby increase the possibility of health issues.

If left untreated, the worse the health impacts and risks will likely be, especially if your home has a serious damp and mould problem.

Damp within the home can produce allergens, irritants, and mould spores, while excessive moisture can encourage the growth of microorganisms like mould and other fungi, certain types of house dust mites, bacteria, or viruses.

Although damp and mould can cause disease and ill health for anyone, those with underlying health conditions are even more at risk.

Speak with a healthcare professional immediately if you are suffering from any symptoms related to damp and mould.

If you live in a rented property, it is important that such issues are addressed at the very first opportunity via your letting agent or landlord.

What responsibilities do tenants have?

It is important to ensure there is adequate ventilation to all areas of a property and that you use appropriate cleaning products at regular intervals to prevent mould from spreading.

It is also important not to dry wet clothes indoors without allowing a regular flow of fresh air.

Other aspects which can contribute to the growth of mould include keeping the heating on continuously and allowing furniture and other bulky items to prevent fresh airflow.

If you rent your property what responsibilities do landlords and agents have?

Landlords and agents should make sure properties are fit for purpose and are regularly inspected. They should also ensure appropriate insulation is in place, inform tenants as to how they should use the heating system, repair leaks promptly, and ensure vents and fans are working properly.

What symptoms should you be looking for?

Persistent coughing, wheeziness, and shortness of breath are some of the most common respiratory effects of damp and mould, alongside the development or worsening of allergic airway ailments like asthma and bronchitis.

They can both cause physical effects not linked to the airways, such as irritation of the eye resulting in allergic conjunctivitis, eczema, and other fungal infections.

What type of house conditions causes damp and mould?

The conditions most likely to trigger them

include properties where residents cannot open a window.

Michaela Anaka, ARLA Propertymark executive for South London, said: "Mould can escalate without adequate heating, ventilation, incorrect use of appliances, building issues and maintenance issues which is why prevention remains the most effective answer."

"Frequent inspections and access are vital, paying special attention to the exterior of the property especially ensuring gutters and downpipes are checked and cleaned annually."

"It is important to bear in mind excess belongings stored in a room along with overcrowding worsens condensation, and early intervention prevents a high cost later for many tenants, particularly in terms of their health, as they can be exposed to asthma, allergic reactions, and other respiratory conditions."

"As winter approaches, please ensure that the conditions in your property do not allow damp and mould to flourish."

BIRMINGHAM ROYAL BALLET

Director Carlos Acosta



Sir Peter Wright's

The Nutcracker

21 November – 13 December



H

BIRMINGHAM
HIPPODROME

birminghamhippodrome.com

“Still the best *Nutcracker*
on offer in the UK”

The Guardian

Rachele Pizzillo. © Johan Persson. Image © Manvir Rai.



Advertising Feature

Prices Set to Increase!

‘It’s not a secret - Prices are going up, and after the budget next month, the increase could be quite significant!

Act Now!

This why we are urging homeowners who are looking to make a significant improvement in the next twelve months to act sooner rather than later.

Here at The Kitchen Doors and Worktop Company, we are doing everything we can to keep costs low, but make no mistake, they will go up.

Save whilst you can

Whilst a complete kitchen rip-out is not an option for the discerning, there are some incredible savings to be made by simply opting for a kitchen makeover using made to measure Doors, New worktops and matching panels and trims.

Express your style with ease..



Every kitchen is different and what you want to achieve will depend upon your personal style and expression.

Our job is to give you some creative input and style advice to help you get the best from the room you’ve got without any stress or you having to spend a fortune!

What our Customers say..

Our customers are the best people to tell you about our service. Here is what a few had to say

‘I am really pleased I decided to update my tired kitchen. It was trouble free’ says Avril Pitt on Google.

‘..extremely professional, and cleaned up after everything. 100% Recommended’ Says Janet Horsey on Google

‘We would highly recommend this lovely and friendly company.’ Says Therese Smith on Google

Why not call to discover what you can do with your kitchen using a modern makeover too?

For a no obligation quote or a free brochure call The Kitchen Doors and Worktops company today on 0330 321 0461

It’s a concept that has really grown in the UK in recent years, and it really has its merits.

No Major Mess

The idea of ripping out perfectly good cabinets when it’s only the doors that need replacing is a difficult decision for many, and for good reason:

Ripping the heart of the home apart only to have workmen of all trades turning your life upside down for three or four weeks is not something everyone wants to sign up for.

Covers All Bases

A kitchen makeover covers all the bases. For example, a straight forward door change can be completed in about one day with additional worktop swaps taking a half day more on average.

New sinks and other appliances can be undertaken at the same time, and all exposed panels, trims and plinths can be exchanged allowing a total colour change without leaving evidence!

Get A Quote

A quotation allows for an on the spot price, and if you choose an established organisation, there should never be any pressure to buy.

We have been mastering the art of beautiful kitchen makeovers since 2005, and have a sterling reputation for quality value and service.

Thanks

Let your kitchen show the world its rejuvenated bright and modern side with a quick kitchen makeover. Your home will look fantastic and you’ll thank yourself for the savings.

cut out & keep

DO UP YOUR KITCHEN WITH A KITCHEN MAKEOVER!

GET THE LOOK BY JUST USING NEW KITCHEN DOORS with HALF-PRICE fitting

WOW! 1/2 PRICE FITTING! WOW! WOW! WOW!

Our made to size Doors will transform your kitchen in a magical way! We have some amazing offers and now 1/2 Price Fitting. Its quicker and costs much less than a total rip out. Request your FREE brochure now.

KITCHEN Doors & WORKTOPS Since 2005

STORES ACROSS THE MIDLANDS Buy 6 or more cupboard Doors & Get half-price fit

0330 321 0461 doorsandworktops.com

Call direct 01384 660065 – 0800 448 8074

*Fitting offer applies to all doors - Full details instore or online

Kitchen Door Company
Doors House Wordsley West Midlands
Request a FREE brochure or home quote today
From around £3000 Complete.



Facing up to the challenges of a subtle change in the weather

SKINCARE routines differ from person to person, and everyone has a tailored goal for their skin, whether that is reducing oiliness, preventing dryness, or managing different skin conditions.

These goals require products suitable for a person's specific skincare needs, but finding the right ones can be tricky, especially when trying to maintain your routine with changing weather conditions.

As the transition from summer to autumn brings cooler weather and changing temperatures, it is important to adjust your skincare routine accordingly. Just as the seasons change, so can your skin's needs.

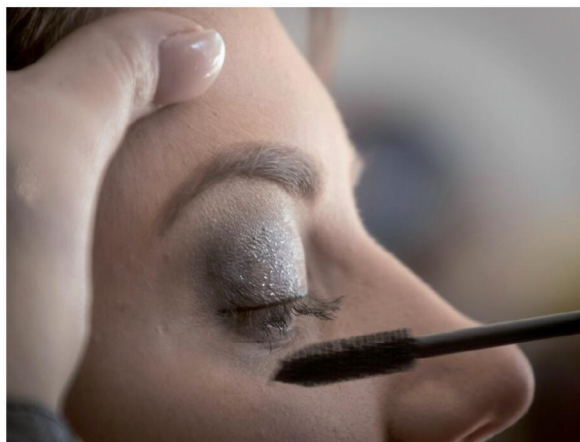
Considering these seasonal shifts, experts at beauty and wellness marketplace Fresha have shared their top tips for adapting skincare routines.

A Fresha spokesperson said: "Changes in weather during seasonal shifts can significantly impact your skin's health. It is crucial to adapt your skincare routine to these changes.

"These tips and tricks will help you understand the adjustments needed during this time to ensure maximum skin protection."

Moisturising

In the summer, when the weather is warmer and humidity levels



People tend to go for heavier makeup in the autumn. s

are higher, skin naturally produces more moisture. The moisture which comes with humidity absorbs into the skin, making it appear dewier.

However, when temperatures drop and the air becomes cooler, skin is stripped of the moisture it had in the summer months.

To adapt to these changes, switching to a richer, cream-based

moisturiser will provide skin with the extra hydration it needs. Look for a product containing hyaluronic acid, which is especially effective in locking in moisture and keeping skin well-hydrated.

Incorporating this step into skincare routines will make a significant difference in preventing dryness and flakiness during the colder months.

Cleansing

Similar to the previous step, due to colder temperatures and drier air, skin is also stripped of its natural oils, so it is important to change up cleanser to adapt to this.

During the summer, foam or gel cleansers are more common as they help to remove excess oil, sweat, and residue from sun cream. However, our skin has diverse needs in the autumn months.

Switching to a more hydrating, cream-based cleanser will help preserve the skin's natural oils, keeping it smooth and soft as the cool air arrives.

Look for cleansers with ingredients like glycerine or aloe vera to maintain your skin's moisture and prevent dryness.

Adjusting your makeup

In the summer, many people prefer a lighter makeup look, often opting for minimal foundation or just concealer to keep the skin looking fresh and natural.

In autumn, however, many people opt for a slightly heavier makeup look, reintroducing foundation into their routine and using more products on the face.

When making these changes, it is important to you choose a foundation that is more hydrating for the skin and that will last longer.

Additionally, using a primer in cooler months is essential. It not only shields skin from harsh weather conditions like rain and wind, which can disrupt makeup, it also provides extra hydration, ensuring a smooth and lasting finish.

Using cream bronzer and highlighter is a better option in autumn as they provide more moisture to drier skin, unlike powder bronzer which maintains dryness.

Exfoliation

As humidity levels decrease and temperatures cool down during the autumn months, dead skin cells build up more quickly on the skin's surface, making exfoliation a key step in the autumn routine.

The build-up of dead skin cells can lead to clogged pores and a rough texture. However, exfoliation can help combat this.

Incorporating this step into your routine once or twice a week will significantly reduce buildup. Using exfoliating products that contain ingredients such as lactic acid will help break down dead skin cells while preventing skin irritation.

Researching before purchasing new products is important to ensure you select options that are gentle and suitable for your skin.

Visit fresha.com for more information.



The Railway Touring Company





Saturday 7, 21, 28 February 2026

Steam over the Northern Fells.

The Winter Cumbrian Mountain Express provides a wonderful opportunity to get out and about during the winter months, with the added bonus of steam haulage over the Northern Fells, including the spectacular Settle & Carlisle Railway.

We have a high speed journey down the West Coast Main Line to Carnforth, hauled by a blue Class 86 electric locomotive. We then enjoy a circular steam tour outwards via Shap to Carlisle and back via the Settle and Carlisle line.

We return from Preston to London behind our blue electric locomotive.

The Winter Cumbrian Mountain Express

MAGNIFICENT LOCOMOTIVES • SCENIC JOURNEYS • FASCINATING DESTINATIONS

For more information please visit railwaytouring.net or phone **01553 661 500**





Refreshments available to purchase on board. Tables for two can be guaranteed in Premier/First for a supplement of £45 per person subject to availability. Prices start from £115 per person. Junior and family fares available. Booking subject to availability. The Railway Touring Company's standard conditions of booking and travel apply – see website for details. Images are for illustration purposes only – locos/trains may differ. The Railway Touring Company – The Old Stables, Estuary Road, King's Lynn, Norfolk PE30 2HL

#ALSletsMe

www.arnoldlodge.com



ARNOLD LODGE

4-18 yrs Co-educational Independent Day School



ALS lets ME ASPIRE

What will your child be?

SIXTH FORM SUBJECT EVENING

TUESDAY 20TH NOVEMBER | 6.00 - 8.00PM

BOOK YOUR PLACE NOW



📞 01926 778050

✉ admissions@arnoldlodge.com

📍 15-17 Kenilworth Rd, Leamington Spa, Warwickshire CV32 5TW

PUBLIC NOTICES

PUBLIC NOTICES

Warwickshire County Council

ROAD TRAFFIC REGULATION ACT 1984
 Warwickshire County Council has made the following Temporary Traffic Orders:
D32650 LOVEROCK CRESCENT, RUGBY
 Order Effect: Road closed to vehicular traffic from Morson Crescent to Linnell Road.
 Reason for Order: Carriageway patching and associated works, 09.30hrs-15.00hrs.
 Order Commences: 5 November 2025 for up to 18 months.
 Anticipated Completion: 5 November 2025.
 Access & Diversion: Linnell Road, Lower Hillmorton Road, Loverock Crescent and vice versa.
 Contractor: Balfour Beatty, Tel: 03452 415 302.
SOUTH ROAD, CLIFTON ON DUNSMORE
 Order Effect: Road closed to vehicular traffic from its junction with Hillmorton Lane.
 Reason for Order: To enable ducting works.
 Order Commences: 3 November 2025 for up to 18 months.
 Anticipated Completion: 5 November 2025.
 Access & Diversion: South Road, main Street, Lilbourne Road, Hillmorton Lane and vice versa.
 Contractor: Callan Connect, Tel: 0121 327 5167.
BEECH DRIVE, THURLASTON
 Order Effect: Road closed to vehicular traffic.
 Reason for Order: To enable duct laying works.
 Order Commences: 5 November 2025 for up to 18 months.
 Anticipated Completion: 16 November 2025.
 Access & Diversion: No diversion available.
 Contractor: Omnis Highway Solutions, Tel: 01724 786 286.
A426 LEICESTER ROAD (NEWBOLD ROAD), RUGBY
 Order Effect: Road Closed to vehicular traffic from Hunters Lane to the A4071.
 Reason for Order: Carriageway patching and associated works, 09.30hrs-15.30hrs.
 Order Commences: 5 November 2025 for up to 18 months.
 Anticipated Completion: 5 November 2025.
 Access & Diversion: A4071, A45, Coventry Road, A426, A428, A426 and vice versa.
 Contractor: Balfour Beatty, Tel: 03452 415 302.
D3218 TOM BROWN STREET, RUGBY
 Order Effect: Road closed to vehicular traffic from Bath Street to Claremont Road.
 Reason for Order: Carriageway resurfacing and associated works, 09.30hrs-15.30hrs.
 Order Commences: 4 November 2025 for up to 18 months.
 Anticipated Completion: 5 November 2025.
 Access & Diversion: Bath Street, Craven Road, Claremont Road and vice versa.
 Access/egress will be maintained for traffic using Murray Road and Grosvenor Road.
 Contractor: Balfour Beatty, Tel: 03452 415 302.
D32790 KINGSLEY AVENUE, RUGBY
 Order Effect: Road closed to vehicular traffic from A428 to Studland Avenue.
 Reason for Order: Carriage patching and associated works, 08.00hrs-16.00hrs.
 Order Commences: 5 November 2025 for up to 18 months.
 Anticipated Completion: 5 November 2025.
 Access & Diversion: Kingsley Avenue, Lower Hillmorton Road, The Kent, Featherbed Lane, Deerings Road, A428 and vice versa.
 Contractor: Balfour Beatty, Tel: 03452 415 302.
COTON PARK DRIVE, RUGBY
 Order Effect: Road closed to vehicular traffic.
 Reason for Order: Works to repair/replace defective manhole frame and covers.
 Order Commences: 7 November 2025 for up to 18 months.
 Anticipated Completion: 7 November 2025.
 Access & Diversion: Central Park Drive, Leicester Road, Newton Manor Lane and vice versa.
 Contractor: Customer Solutions Plus, Tel: 07918 298 599.
CONSUL ROAD, RUGBY
 Order Effect: Road closed to vehicular traffic.
 Reason for Order: Works to repair/replace defective manhole frame and covers.
 Order Commences: 5 November 2025 for up to 18 months.
 Anticipated Completion: 5 November 2025.
 Access & Diversion: Leicester Road, Brownsover Road, Old Leicester Road, Glebe Farm Road and vice versa.
 Contractor: Customer Solutions Plus, Tel: 07918 298 599.
HOUULTON WAY, RUGBY
 Order Effect: Road closed to vehicular traffic.
 Reason for Order: Works to connect 2 pressurised off sewers.
 Order Commences: 3 November 2025 for up to 18 months.
 Anticipated Completion: 14 November 2025.
 Access & Diversion: Vicarage Hill, Rugby Road, Main Street, Lilbourne Road, Hillmorton Lane and vice versa.
 Contractor: Chevron Traffic Management Ltd, Tel: 03300 080 820.
KINGS NEWNHAM LANE, BRETFORD
 Order Effect: Road closed to vehicular traffic.
 Reason for Order: To safely enable utility works for up to 18 months.
 Order Commences: 4 November 2025 for up to 18 months.
 Anticipated Completion: 4 November 2025.
 Access & Diversion: Fosse Way, Newnham Lane, Bretford Road and vice versa.

Contractor: Customer Solutions Plus, Tel: 07918 298 599.
 Warwickshire County Council proposes to make the following Temporary Traffic Orders:
C213 RUGBY ROAD, CLIFTON UPON DUNSMORE
 Order Effect: Road closed to vehicular traffic from Station Road to Butlers Leap.
 Reason for Order: Carriageway patching and associated works, 09.30hrs-15.30hrs.
 Order Commences: 17 November 2025 for up to 18 months.
 Anticipated Completion: 17 November 2025.
 Access & Diversion: Houltun Way, Hillmorton Lane, Lilbourne Road, Main Street.
 Contractor: Balfour Beatty, Tel: 03452 415 302.
NORTH STREET, NEWBOLD, RUGBY
 Order Effect: Road closed to vehicular traffic southbound only.
 Reason for Order: To safely enable gas main connection works.
 Order Commences: 17 November 2025 for up to 18 months.
 Anticipated Completion: 21 November 2025.
 Access & Diversion: Evreux Way, Corporation Street, Warwick Street, Lawrence Sheriff Street, Hillmorton Road, Whitehall Road, Clifton Road, Church Street, North Street and vice versa.
 Contractor: Cadent Gas, Tel: 07831 706 512.
RAVENGLASS, BROWNSOVER, RUGBY
 Order Effect: Road closed to vehicular traffic outside number 15.
 Reason for Order: To safely enable the laying of duct in carriageway & footway.
 Order Commences: 18 November 2025 for up to 18 months.
 Anticipated Completion: 20 November 2025.
 Access & Diversion: No diversion available.
 Contractor: Core Highways, Tel: 03300 169 688.
PUBLIC FOOTPATHS FROM CHURCH ROAD TO GREEN LANE, CHURCH LAWFORD
 Order Effect: Footpath closed to all traffic.
 Reason for Order: Works to lay approx 40 meters of duct in the verge.
 Order Commences: 20 November 2025 for up to 6 months.
 Anticipated Completion: 26 November 2025.
 Access & Diversion: No diversion available. Pedestrian track matting to be taken to site to enable pedestrian movements over grass verge.
 Contractor: Callan Connect, Tel: 0121 327 5167.
GREEN LANE, CHURCH LAWFORD
 Order Effect: Road closed from Church Road to Green Lane.
 Reason for Order: Works to lay approx 90 meters of duct in carriageway from footpaths.
 Order Commences: 20 November 2025 for up to 18 months.
 Anticipated Completion: 26 November 2025.
 Access & Diversion: No diversion available.
 Contractor: Callan Connect, Tel: 01213 275 167.
BUCKWELL LANE, CLIFTON UPON DUNSMORE
 Order Effect: Road closed to vehicular traffic from its junction with Lilbourne Road.
 Reason for Order: To enable duct laying works.
 Order Commences: 19 November 2025 for up to 18 months.
 Anticipated Completion: 26 November 2025.
 Access & Diversion: No diversion available. Please note: Access/Egress to Field View and Hatfield Close may be affected while works are in progress.
 Contractor: Callan Connect, Tel: 01213 275 167.
KINGS NEWNHAM LANE, BRETFORD
 Order Effect: Road closed to vehicular traffic.
 Reason for Order: To safely enable the replacement of existing pole.
 Order Commences: 19 November 2025 for up to 18 months.
 Anticipated Completion: 19 November 2025.
 Access & Diversion: Kings Newnham Lane, Fosse Way, Newnham Lane, Bretford Road and vice versa.
 Contractor: Core Highways, Tel: 03300 169 688.
LITTLE LAWFORD LANE, LITTLE LAWFORD
 Order Effect: Road closed to vehicular traffic.
 Reason for Order: To safely enable tree trimming works.
 Order Commences: 21 November 2025 for up to 18 months.
 Anticipated Completion: 21 November 2025.
 Access & Diversion: Little Lawford Road, Kings Newnham Lane, Queens Road, Rugby Road, Brandon Road, Coventry Road, Lawford Road, Rugby Western Relief Road, Newbold Road, Main Street, Little Lawford Lane and vice versa.
 Contractor: Go Traffic Management, Tel: 01332 827 008.
 For all of the above temporary orders, pedestrian access to and egress from properties and land situated adjacent to the length of road to be closed will be maintained at all times. Vehicular access will be maintained where possible.
 To report any problems with these works or for further details of our current & planned roadworks visit our website warwickshire.gov.uk/roadworksmap or call us 01926 412515.
 S Duxbury, Director of Strategy, Planning & Governance, Shire Hall, Warwick CV34 4RL Date 30 Oct 2025

Classified

TELEPHONE 01527 588688 FACSIMILE 01527 584371

PUBLIC NOTICES

Warwickshire County Council

ROAD TRAFFIC REGULATION ACT 1984
 Warwickshire County Council has made the following Temporary Traffic Orders:
C196 THE HOLLOWAY (SHUCKBURGH ROAD), PRIORS MARSTON
 Order Effect: Road closed to vehicular traffic from Southam Road to School Lane.
 Reason for Order: Carriageway patching and associated works, 09.00hrs - 15.00hrs.
 Order Commences: 5 November 2025 for up to 18 months.
 Anticipated Completion: 5 November 2025.
 Access & Diversion: Shuckburgh Road, Priors Marston Road, Butt Hill, A425, Welsh Road East, Welsh Road, Southam Road and vice versa.
 Contractor: Balfour Beatty, Tel: 03452 415 302.
G35 HARDWICK ROAD, PRIORS MARSTON
 Order Effect: Road closed to vehicular traffic from Welsh Road to Byfield Road.
 Reason for Order: Carriageway patching and associated works, 09.30hrs - 15.00hrs.
 Order Commences: 5 November 2025 for up to 18 months.
 Anticipated Completion: 7 November 2025.
 Access & Diversion: Welsh Road, Southam Road, The Green, Main Road and vice versa. Limited access to Manor Farm Court.
 Contractor: Balfour Beatty, Tel: 03452 415 302.
D24200 KEYS LANE, PRIORS MARSTON
 Order Effect: Road closed to vehicular traffic from Shuckburgh Road to Hellidon Road.
 Reason for Order: Carriageway patching and associated works, 08.00hrs - 16.00hrs.
 Order Commences: 7 November 2025 for up to 18 months.
 Anticipated Completion: 7 November 2025.
 Access & Diversion: Shuckburgh Road, The Holloway, The Green, Hellidon Road, and vice versa.
 Contractor: Balfour Beatty, Tel: 03452 415 302.
PARK LANE, HARBURY
 Order Effect: Road closed to vehicular traffic.
 Reason for Order: Works to install new water connection.
 Order Commences: 1 November 2025 for up to 18 months.
 Anticipated Completion: 1 November 2025.
 Access & Diversion: Park Lane, Temple End, Harbury Lane, Chesterton Road, Plough Lane, Fosse Way, Southam Road, Ufton Hill, Ufton Road, Hall Lane, Crown Street, Vicarage Lane, South Parade and vice versa.
 Contractor: Network Plus, Tel: 01332 820 920.

Warwickshire County Council proposes to make the following Temporary Traffic Orders:
COLLINGHAM LANE, LONG ITCHINGTON
 Order Effect: Road closed to vehicular traffic.
 Reason for Order: Works to renew a water meter.
 Order Commences: 19 November 2025 for up to 18 months.
 Anticipated Completion: 20 November 2025.
 Access & Diversion: Collingham Lane, Stockton Road, Leamington Hastings Road, Long Itchington Road, Marton Road, The Green, Southam Road and vice versa.
 Contractor: Chevron Traffic Management Ltd, Tel: 03300 080 820.
BUTT HILL, NAPTON ON THE HILL
 Order Effect: Road closed to vehicular traffic from Stockton Road to Southam Road.
 Reason for Order: To enable final disconnection works following completion of new water mains installation.
 Order Commences: 17 November 2025 for up to 18 months.
 Anticipated Completion: 21 November 2025.
 Access & Diversion: Stockton Road, Napton Road, High Street, Southam Road, Southam Bypass, Daventry Road and vice versa.
 Contractor: Sunbelt TM, Tel: 08007 834 444.
 For all of the above temporary orders, pedestrian access to and egress from properties and land situated adjacent to the length of road to be closed will be maintained at all times. Vehicular access will be maintained where possible.
 To report any problems with these works or for further details of our current & planned roadworks visit our website warwickshire.gov.uk/roadworksmap or call us 01926 412515.
 S Duxbury, Director of Strategy, Planning & Governance, Shire Hall, Warwick CV34 4RL Date 30 Oct 2025

PUBLIC NOTICES

**Rugby Borough Council
 Town and Country Planning
 Act 1990 (as amended)**

**Application Number R25/0896
 LAND TO THE NORTH OF SYMMETRY PARK, WESTERN LINK, RUGBY**
 Hybrid planning application comprising:
 - Full planning application for the erection of one Use Class B8 (Warehousing and Distribution) unit, with ancillary Use E(G)(i) (offices) with associated infrastructure including vehicle parking and service areas (including lorry parking), sustainable drainage provision, gate house, sprinkler tanks, pump houses, gas and electricity substations. Earthworks and plateauing of the wider development site including the formation of bunds. Completion of the Sustainable Transport Corridor connection to adjacent land to the east and the creation of the Porford Dam link to the A4701 roundabout including associated landscaping and infrastructure, bridge to Cavston Greenway and the creation of the Cawston Landscape Park.
 - Outline planning application for Use Class B8 (Warehousing and Distribution) units with ancillary Use Class (G)(i) (offices) with associated site infrastructure including vehicle parking and service areas (including lorry parking), energy centre, landscaping, sustainable drainage system. All matters reserved expect means of access.
 This application is accompanied by an Environmental Statement. This development may affect a Listed Building. This development may affect a Conservation Area. This development may affect a Public Right of Way. This is a major development.
 Members of the public may inspect copies of the application, the plans and documents submitted with it online at: www.planningportal.rugby.gov.uk or in an electronic form at: Town Hall, Evreux Way, Rugby, CV21 2RR between the hours of 9.00 am and 5.00 pm Monday to Friday until 30 November 2025. Please note a planning officer would not be present. If you wish to make an appointment to discuss the application, please contact the case officer.
**Application Number R25/0871
 CHURCHOVER HOUSE, SCHOOL STREET, CHURCHOVER, RUGBY, CV23 9EG**
 Proposed outbuilding in rear garden. This development may affect a Conservation Area.
**Application Number R25/0883
 LENTONS LANE SOLAR FARM, LENTONS LANE, ALDERMANS GREEN**
 Solar Farm Development including solar arrays, control buildings and associated infrastructure, internal access roads including landscaping and associated development.
 This is a major development
**Application Number R25/0915
 THE MALTHOUSE, MAIN STREET, THURLASTON, RUGBY, CV23 9JS**
 Variation of condition 2 and 3 of R21/0477 (Erection of 6 (no) dwellings) to facilitate an adjustment to the external facing materials of Plots 1 - 3.
 This development may affect a Conservation Area
 Members of the public may inspect copies of the application, the plans and documents submitted with it online at: www.planningportal.rugby.gov.uk or in an electronic form at: Town Hall, Evreux Way, Rugby, CV21 2RR between the hours of 9.00 am and 5.00 pm Monday to Friday until 21 November 2025. Please note a planning officer would not be present. If you wish to make an appointment to discuss the application, please contact the case officer.
 Any person who wishes to make representation to the above mentioned Council about the applications should make them online - www.planningportal.rugby.gov.uk (search for application number and select comment) - or in writing by that date to Chief Officer - Growth and Investment, Town Hall, Rugby, CV21 2RR. If an application is determined by the Planning Committee, members of the public may have the opportunity to speak at the meeting. More details about public speaking are available from the Council or on-line at: www.rugby.gov.uk/speakingatplanning
 For household or minor commercial applications, in the event of an appeal against a refusal of planning permission, dealt with on the basis of representations in writing, any representations made will be sent to the Secretary of State, and there will be no further opportunity to comment at the appeal stage.
 Nicola Smith
 Chief Officer - Growth and Investment
 MRTPI

PUBLIC NOTICES

Warwickshire County Council

ROAD TRAFFIC REGULATION ACT 1984
 Warwickshire County Council has made the following Temporary Traffic Orders:
LARCHFIELDS, WOLSTON
 Order Effect: Road closed to vehicular traffic.
 Reason for Order: To safely enable works to lay new ducting.
 Order Commences: 5 November 2025 for up to 18 months.
 Anticipated Completion: 7 November 2025.
 Access & Diversion: No diversion available.
 Contractor: Core Highways, Tel: 03300 169 688.
HEATHER ROAD, BINLEY WOODS
 Order Effect: Road closed to vehicular traffic.
 Reason for Order: Works to repair/replace defective manhole frame and covers.
 Order Commences: 4 November 2025 for up to 18 months.
 Anticipated Completion: 4 November 2025.
 Access & Diversion: Ferndale Road, Rugby Road, Woodlands Road and vice versa.
 Contractor: Customer Solutions Plus, Tel: 07918 298 599.
 Warwickshire County Council proposes to make the following Temporary Traffic Orders:
WALL HILL ROAD, CORLEY
 Order Effect: Road closed to vehicular traffic.
 Reason for Order: Works to replace existing pole.
 Order Commences: 19 November 2025 for up to 18 months.
 Anticipated Completion: 19 November 2025.
 Access & Diversion: Wall Hill Road, Common Lane, Church Lane, Tamworth Road, Coventry Road, Meriden Road, Ousterne Lane and vice versa.
 Contractor: Omnis Highway Solutions, Tel: 01724 786 286.
 For all of the above temporary orders, pedestrian access to and egress from properties and land situated adjacent to the length of road to be closed will be maintained at all times. Vehicular access will be maintained where possible.
 To report any problems with these works or for further details of our current & planned roadworks visit our website warwickshire.gov.uk/roadworksmap or call us 01926 412515.
 S Duxbury, Director of Strategy, Planning & Governance, Shire Hall, Warwick CV34 4RL Date 30 Oct 2025

PUBLIC NOTICES

Keeping you up to date with all the latest information on Planning Proposals, Traffic Notices, Goods Vehicle Operator Licences, Licences To Sell Alcohol, Probate Notices.....

Classified

TELEPHONE 01527 588688 FACSIMILE 01527 584371

ANNOUNCEMENTS

DEATHS

GILL-OTTINGER

Nicole

Of Duddington passed away at home on 14th October 2025.

Wife of Anthony and will be sadly missed by all those who knew her.

Following a private cremation, a service to celebrate Nicole's life will be held at Duddington Parish Church on Friday 21st November 2025 at 3pm.

Family flowers only but donations, if desired, to the Riding for the Disabled and Sue Ryder, Thorpe Hall Hospice.

These can be made online via www.emdormanfunerals.co.uk or sent directly to

E M Dorman Funeral Directors, Beechcroft, 69 High Street East, Uppingham, Rutland, LE15 9PY. Tel: 01572 823976

FUNERAL DIRECTORS

Henry Ison & Sons Funeral Directors

Established 1907

Creating a funeral as unique as your Loved One

We are here to support and guide you. Caring for families of all faiths.

24 Hour Personal Care
02476 997 811

Branches in Coventry, Leamington Spa and Kenilworth

henryison.co.uk



SALES & WANTS

MISCELLANEOUS

BEDS NEW Doubles £95 Singles £59 King size £159. Second hand doubles £49 Singles £29 Fridges £49 Freezers £59 Can deliver 07703 925662

RECLINER CHAIR electric rise & recline £169 Manual recline chair £60 High seated chair £40 Can deliver 07703 925662

ICE HOCKEY FULL KIT

Skates, helmet, body armour, sticks, knee & elbow protectors

OFFERS
07754660619

SONY Smart Engine VHS Video Recorder gwo £20 5 tread wooden step ladder £10 07941298266

FORD Galaxy car seat fits 2006 Galaxy VGC £15 07599403418

PAID £160 except £90 0786695357

WANTED

****WANTED: Vinyl Records CDs Cassettes**

Vintage or New **

Seeking classic rock, jazz, indie and rare finds. Cash paid

Call or text: 07765 142354 Or 01527 893992

Or email: welston@live.com

Paul (Albatross & Doomed Records)

MISCELLANEOUS

DINING / Kitchen Table Brand new, light oak Never used 4ft x 2ft 6

MOBILITY Scooter 4 wheel, new battery and charger Excellent condition £495 0786695357

A hostess trolley offers around £15 01564 773461

FREE Double mattress almost new unwanted gift 07765134148

TOWER Scaffold 4' x3' free to collector 07837056866

KENWOOD Chef Classic with all attachments (as new) £75 07743929558

KIDNEY shaped dressing table with curtains and stool. Beautiful condition. £7507743929558

NESCAFE Dolce Gusto Coffee machine with pods (used) £25 07743929558

CRYSTAL drinks decanter and 2 whiskey glasses. Glasses have never been used, excellent condition £12. Tel 01527 500217

CONSERVATORIES & GLAZING

DOUBLE GLAZING REPAIRS

Locks, Hinges, Handles, Glass, Windows or Doors
New Doors/Windows Also Supplied/Fitted
07973 200 623

DRIVEWAYS

COVENTRY DRIVEWAYS

• Block paving • Slabs • Porcelain Tiles & Sandstone Kits
• Fencing • Gravel • Turf & Artificial Grass
• Decking, Steps and more

7 Years Warranty on all projects
Payment only after completion

02476 274439 07740 101227
www.spanglefish.com/coventrydriveways

HOME IMPROVEMENTS

HANDY MAN

If you're looking for a fast and reliable service

Then call Lenny

- Plastering • Plumbing • Fencing
- Gardening • Flooring • Kitchens
- Bathrooms • Carpentry • Flat pack furniture
- Tiling • Painting

02476 443 996
07794 784 266

NO VAT CHARGE

SERVICES

KITCHENS

S.W INSTALLATIONS

Kitchens & Bathrooms

FREE DESIGN & QUOTATION

QUALITY KITCHENS & BATHROOMS SUPPLIED & FITTED

PLUMBING, CARPENTRY, TILING, WORKTOP & DOOR REPLACEMENT

(Supply & fit, supply only or fit only)

LOCAL TRADESMAN 20YRS EXPERIENCE

NO JOB TOO SMALL

01926 773386 or 07971 684 353

LOGS

LOGS FOR SALE

Mainly Ash

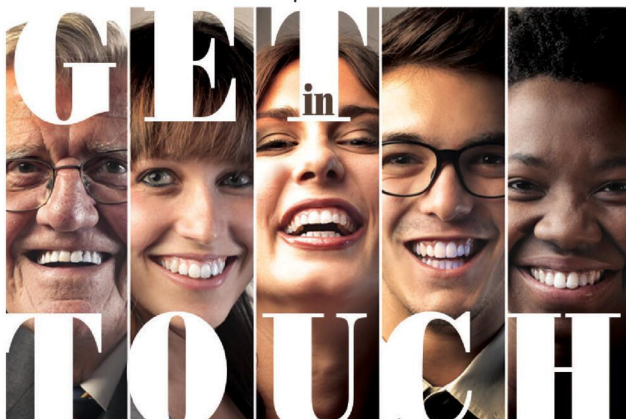
£120, £220, £390 loads delivered

Builders bag of logs £120 delivered

Card, cash or cheque payments taken

Tel 07477 778536 or 07983 441818

See load sizes at our website
www.rbtimber.uk



We love hearing from you!

TO SUBMIT A FREE ADVERT PLEASE EMAIL
freeads@bullivantmedia.com

Coventry Observer

Website: www.CoventryObserver.co.uk

Twitter: www.twitter.com/ooobservernews

NEWSDESK
01527 588657

Editor: Tristan.Harris@coventryobserver.co.uk

Leamington Observer

Website: www.LeamingtonObserver.co.uk

Twitter: www.twitter.com/leamobs

NEWSDESK
01527 453737

Editor: editor@leamingtonobserver.co.uk

Rugby & Lutterworth Observer

Website: www.RugbyObserver.co.uk

Twitter: www.twitter.com/RugbyObserver

NEWSDESK
01527 453737

Editor: editor@rugbyobserver.co.uk

Online Newspaper: www.CoventryObserver.co.uk/editions

Instagram: www.instagram.com/coventryobserver

ADVERTISING
01926 317111

National & Agency: Medialforce - 0207 832 1649
Email: adverts@coventryobserver.co.uk

Facebook: www.facebook.com/CovObserver

SPORTSDESK
01527 588659

Sport: sport@coventryobserver.co.uk

Online Newspaper: www.LeamingtonObserver.co.uk/editions

ADVERTISING
01926 317140

National & Agency: Medialforce - 0207 832 1649
Email: adverts@leamingtonobserver.co.uk

Facebook: www.facebook.com/leamington.observer/

SPORTSDESK
01527 588659

Sport: sport@leamingtonobserver.co.uk

Online Newspaper: www.RugbyObserver.co.uk/editions

ADVERTISING
01527 453743

National & Agency: Medialforce - 0207 832 1649
Email: adverts@rugbyobserver.co.uk

Facebook: www.facebook.com/rugby.observer

SPORTSDESK
01527 588659

Sport: sport@rugbyobserver.co.uk

England take look at City goalkeeper as record-breaking form catches eye

Carl Rushworth has recorded six clean sheets in 12 league games for Coventry City.



by Aaron Sutcliffe
aaron.sutcliffe@bullivantmedia.com

FOOTBALL: COVENTRY City goalkeeper Carl Rushworth could be in line for a shock call-up to Thomas Tuchel's next England squad.

According to talkSPORT, England have sent scouts to watch the Coventry shot-stopper in action. The 24-year-old recently broke a club record which stood for 91 years after going 613 minutes without conceding a goal for the Sky Blues. And the streak marked the longest run without conceding a goal of any goalkeeper in Coventry's history.

Rushworth, who joined the Sky Blues on loan from Brighton and Hove Albion in the summer, has enjoyed an impressive start to life at the Coventry Building Society Arena.

He has recorded six clean sheets in 12 appearances with the Sky Blues unbeaten and top of the Championship table.

And his form has reportedly caught the eye of England boss Tuchel with the Three Lions to play Serbia and Albania next month.

Tuchel called up Everton's Jordan Pickford, Crystal Palace's Dean Henderson and Manchester City's James Trafford as his three goalkeepers in his last squad.

With Pickford England's regular number one and Henderson featuring week-in week-out for Palace, Rushworth would likely be competing with Trafford for the third keeper spot in the squad.

Man City swooped for Paris Saint-Germain's Champions League winning goalkeeper Gianluigi Donnarumma late in the summer window who became Pep Guardiola's first choice keeper in the process.

England have already qualified for the 2026 FIFA World Cup which is due to take place in Canada, Mexico and the United States of America next summer.

The goalkeeper previously made one appearance for England under-21s back in 2023.

Dave Boddy has been appointed as the new CEO of Solihull Moors. Picture by Kate Willetts.



Former Sky Blues chief takes up CEO role

FORMER Coventry City chief Dave Boddy has taken up the role of CEO at National League club Solihull Moors.

Boddy spent seven years as CEO at Coventry from 2017 to 2024 during which time the Sky Blues rose from League Two to the brink of the Premier League.

He left Coventry in January last year but has now returned to football with Moors in the National League.

Boddy said: "I am really excited

about the opportunity that the Moors are offering me and excited to be back in the game.

"The chairman and the rest of the team have built a great infrastructure for the club and the training ground is the envy of most League One and Two clubs.

"I will be bringing a wealth of experience, ideas and enthusiasm to try and further help develop the club both on and off the pitch and further cement the

club at the heart of its community.

"The chairman involved me in the process of appointing the new manager at the back end of September which gave me a great insight to how the club operates and what great potential there is."

During his time with the Sky Blues, Boddy dealt with the club's groundshare with Birmingham City and also helped Coventry operate smoothly during the pandemic.

Blaze in action against Cardiff Devils. Picture by Scott Wiggins.



Blaze scorched by Devils after Flyers downed in Fife

ICE HOCKEY: COVENTRY Blaze claimed victory at Fife Flyers before suffering a home defeat against Cardiff Devils.

Blaze won 4-1 against the Flyers at Fife Ice Arena as Coventry ran away with the game in the third period.

Coventry then lost 3-0 against Cardiff at the Skydome Arena to suffer a third defeat from five league matches this season.

The results mean Blaze sit eighth in the Elite League table.

Following a physical opening five minutes in Fife, Coventry took the lead when Grant Mismash found the net at 7.12 from Elijah Barriga's assist.

Blaze failed to capitalise on three minor penalties thereafter as the middle period ended goalless.

And Coventry spurned another chance on the man advantage at the start of the third period.

Fife eventually equalised at 42.46 as new signing Giordano Finoro struck with seven seconds remaining on a Blaze powerplay.

However, Blaze responded just over a minute later at 43.47 when Grayson Constable fired home assisted by Connor Russell and Artie Buzoverya.

Coventry struck again just 27 seconds later as William Boysen produced a clinical finish to put the visitors in command.

And Blaze finally made Fife pay on the powerplay, following a clumsy hit by Jonas Emmerdahl on Mack Stewart, as Matthew Gleason finished from close range at 53.59.

Fife's Jeremy Masella took a double minor in the final min-

utes as Blaze comfortably saw out the game to seal a second league victory of the season.

However, Blaze then suffered a stunning home defeat against Cardiff on home ice at the Skydome.

The best chance of the first period saw Great Britain international Ben Bowns make a stunning glove save to keep out Barriga's early effort.

Coventry killed a Cardiff powerplay soon after as Stewart led a brave Blaze block as the first period ended goalless.

Blaze's first powerplay of the game came early in the second period with Kevin Moore's side unable to make the breakthrough.

And Bowns produced another inspired stop to deny offensive blue-liner Ivan Chukarov after he found himself wide open in front of the Cardiff net.

The Devils eventually broke the deadlock at 36.41 as Great Britain forward Brett Perlino scored on a breakaway assisted by Steven MacLean.

And Bowns then made a fine double save to keep Cardiff ahead and leave Blaze scoreless after the first two periods.

Cardiff killed a Blaze powerplay at the start of the third period and doubled their lead at 42.10 as Cole Sanford found the net.

Blaze pulled Mat Robson for an extra skater late on only for Ryan Barrow to finish into an empty net at 58.38 to complete the scoring.

Coventry are next in action against Nottingham Panthers on Saturday, November 1 with the face-off at 7pm at Motorpoint Arena.

Ealing too strong for Cov

RUGBY UNION: COVENTRY Rugby suffered a 63-36 home defeat against Ealing Trailfinders despite four tries from Peter Sullivan.

Sullivan touched down three times before the break and once in the second half for the home side at Butts Park Arena.

And Josh Thomas also dotted down as the hosts came away with a try bonus point.

However, Ealing crossed nine times in a ruthless display from the visitors who remain top of

the table with a perfect record.

Francis Moore, David Bridge, Matt Cornish, Jordan Holgate, who touched down twice, Tobi Wilson, Danny Cutmore, Scott Buckley and Jordan Reid all scored tries for Ealing.

And the result leaves Coventry 11th in the Champ Rugby table with one win from four matches.

Coventry are next in action against Richmond on Saturday, November 1 with kick-off at 2pm at Richmond Athletic Ground.

CRS LTD
Spring Lane South, Malvern WR14 1AT
ATF's are the **ONLY** legal way to scrap your vehicles
BUYERS
of all SCRAP Metals and SCRAP Vehicles
The **ONLY** authorised treatment facility in Malvern!
Best Prices Paid • Collection & Skip Drops Farm
Equipment, Copper, Brass etc. • 50 Ton Weigh Bridge
ID REQUIRED - 01684 578081
www.crs-malvern.co.uk

Observer SPORT



9 772040 128006
Published by Bullivant Media Group Ltd, Webb House,
Church Green East, Redditch, Worcestershire, B96 8BP
Printed by Newsquest, Newspaper House, Osney
Mead, Oxford, Oxfordshire, OX2 0EJ

VINYL RECORDS WANTED
Buying since 1978
Get your cash TODAY!
I will come to you
Phone PAUL
01527 893992 | 07765 142354

www.rugbyobserver.co.uk

BRINGING YOU **ALL THE LATEST** SPORTS NEWS AND VIEWS FROM THE AREA

Sky Blues to visit Butlin Road in cup

FOOTBALL: RUGBY Town will play Coventry City in the second round of the Birmingham Senior Cup.

Valley will host Coventry's youngsters at Butlin Road on Tuesday, November 18.

A date for the fixture will be arranged in due course.

The two teams last met in the competition in 2019 when Coventry triumphed 5-1 at Butlin Road.

Rugby enjoyed a free week since their last outing against Loughborough Students which ended in a 1-0 victory.

And Valley boss Grant Joshua branded the success as his 'most pleasing win' as Town boss.

The home win stretched Rugby's unbeaten to five matches, lifting Valley clear of the Northern Premier



Rugby Town boss Grant Joshua. Picture by Martin Pulley.

League Midlands relegation zone.

However, Joshua stressed his side must be more clinical in front of goal after wasting a number of chances in the win against Loughborough.

Joshua said: "It's maybe my most pleasing win as manager for a few reasons really.

"Our out-of-possession work

proved what I already knew - we're a very fit side, and we had to be, because ours is a big pitch and they have patterns and rotations that are tough to live with if you're not physically up to it.

"Although Loughborough had most of the ball, we had all of the chances. We showed our counter-attacking qualities and should have been more clinical.

"That's the message to my forward players. Kill teams off when the opportunities present themselves.

"Still, I was really pleased with how we got into those areas. We looked a side who could do both."

Rugby are next in action against Long Eaton United on Saturday, November 1 with kick-off at 3pm at Grange Park.

Narrow defeats halt Borough's momentum

RUGBY Borough suffered back-to-back defeats in the league for the first time this season after losing 2-1 at Carlton Town in midweek.

Goals from Lamin Manneh and Niall Davie put Carlton in command at the break at the Bill Stokeld Stadium.

However, a late goal from Cam Collins set up a nervy finish with Rugby unable to find an equaliser in the remaining minutes.

The result means Borough sit sixth in the Northern Premier League Midlands table, five points behind new leaders Carlton who have three games in-hand.

Carlton took the lead in style on 22 minutes as Manneh scored a stunning goal from distance, finding the top corner to put the home side in front.

And Manneh then won a penalty on 37 minutes after he

drew a foul in the box as Carlton captain Davie found the net from the spot.

Borough halved the deficit nine minutes from time courtesy of a well-taken finish from Collins.

The visitors pushed for a late equaliser but could not find a way through as Carlton hung on to move top of the table.

That came after Rugby lost 1-0 at home against Lichfield City last weekend.

Borough saw their four-game unbeaten run at Kilsby Lane come to an end as Jack Edwards scored the game's only goal.

Edwards scored the winner on 77 minutes with a free-kick into the bottom left corner which wrong-footed Borough goalkeeper Brandon Ganley.

Rugby are next in action against Belper Town on Saturday, November 1 with kick-off at 3pm at the Raygar Stadium.

CASHBROKERS

LEAMINGTON SPA

PAWNBROKING LOANS
SCRAP GOLD & SILVER
BUY BACK
JEWELLERY & WATCHES
COINS & BULLION

01926 258252

144 Parade, Leamington Spa, CV32 4AG

www.cashbrokersleamingtonspa.co.uk

CASH PAID

FOR GOLD, SILVER,
COINS & BULLION

