


Observer

Rugby & Lutterworth 

Friday, January 16th 2026 Week 3

 facebook.com/rugby.observer

rugbyobserver.co.uk

 @rugbyobserver t: 01926 451900

Your **FREE** edition - just pick one up and keep up with the news

Get your away shirt for 1p



Visit monzo.com/ccfc

In person Monzo customer exclusive. Limited stock. Ts&Cs apply.



Visit the **1p** monzo shop

Sat 17 Jan 2026

Broadgate Square

Broadgate, Coventry, CV1 1NF

10am - 6pm

CBS Arena

Judds Ln, Coventry, CV6 6GE

10am - 12pm

monzo



In person Monzo customer exclusive. Limited stock. Ts&Cs apply.



WANTED
Motorcycles and
Scooters

Any cc, condition or age,
good prices paid

07944 781 933 | 01926 257 643

Friday, January 16th 2026 Week 3

 facebook.com/rugby.observer

rugbyobserver.co.uk

 @rugbyobserver t: 01926 451900

Your **FREE** edition - just pick one up and keep up with the news

Opinions split on move to postpone elections

by **Andy Morris**
andy.morris@bullivantmedia.com

RUGBY Borough Council's (RBC) decision to request the postponement of local elections in May has been 'misrepresented for political purposes' by critics, the council says.

The council's Conservative Group has described the Labour administration's decision to ask the government to cancel the elections as 'an attack on local democracy'.

But the Labour Group says the decision was taken 'with regret, following open debate in public, and in response to a formal request from the Secretary of State'.

RBC's Cabinet agreed to ask for the postponement in response to a government request ahead of a planned local government reorganisation (LGR) in 2027, under which all councils in Warwickshire would be replaced by either one or two new unitary authorities.

The government made the request amid concern about the ability of councils to run the May elections alongside LGR - as well as the cost to taxpayers of holding elections for councils such as RBC that are due to be abolished in 2028.

RBC's Cabinet says the postponement would 'release essential capacity to deliver local government reorganisation'.

But the Conservative Group claimed the council was 'fully capable of delivering a lawful and transparent election using existing staff and resources'.

Group leader Coun Derek Poole said: "I believe the ability of residents to pass judgement on those in power is fundamental to democracy - and I speak as someone who has been on the receiving end of that judgement."

Coun Adrian Warwick, Leader of the Conservative Group at Warwickshire County Council said the move was 'deeply concerning'.

He added: "It is insulting for the Cabinet to show such clear contempt for the democratic process and for the people of Rugby, and we will continue to oppose any attempt to deny residents their right to vote."

Council leader Coun Michael Moran said the decision was not taken lightly.

He added: "It is disappointing to hear criticism from the Conservative Group, who only last year asked - in secret and without public debate - for all Warwickshire County Council elections to be cancelled."

"RBC is dealing with a demanding workload linked to LGR. We have been asked for our view, just as every other council has been, and we have responded openly, transparently and with regret. Government will make the final decision."

"Our focus has to be on putting Rugby in the strongest possible position, not on short-term political point-scoring. I am aware of councils of all political colours making similar requests at this time."

"This is a short, proportionate and transparent response to a government request, taken in the open and focused on securing the best possible future for Rugby residents."



TASTE OF THE FUTURE: THE NEXT generation of chefs studying at Rugby College have opened a new training restaurant.

The opening of Scrum & Fork was marked by a ribbon-cutting ceremony led by Mayor Barbara Brown, alongside Rugby MP John Slinger MP, college group WCG's Deputy Principal Stuart Evans, and Professional Cookery students from the college.

Rugby College Campus Principal Simon Philpott said: "Scrum & Fork is not just a dining space, it is a professional environment where our students can hone their skills, learn what it means to work in hospitality and gain the real-life experience they need to succeed

in the world of work.

"We are incredibly proud to open a restaurant that connects our college with the local community and showcases the exceptional talent of our students."

Scrum & Fork is now operating as a student-run training restaurant throughout the academic year. Visit www.wcg.ac.uk/scrumandfork for more information.

Mayor Barbara Brown (middle front), John Slinger MP (middle right) and WCG Deputy Principal Stuart Evans (middle left), with students from Rugby College's catering and hospitality department.

Happy new life

 **ExtraCare**

Earlsdon
Park
Village

Call
024 7771 8252
to book your
look around and
discover the joy
of retirement
living

Scan here to
discover more



Registered charity no. 327816

Championing the needs of Rugby residents since 1991 and delivering the news to you every week

Confidence is strong when it comes to growth say chamber chiefs



Looking up - Steve Harcourt and Corin Crane discuss the economy in Warwickshire.

THE ECONOMY is expected to grow in Coventry and Warwickshire this year.

Coventry and Warwickshire Chamber of Commerce's final Quarterly Economic Survey of 2025 showed firms in the region felt the effects of an uncertain period around the time of the Autumn Budget and the fallout from the cyber-attack at JLR.

The survey, which measures how business owners are feeling, is analysed by the Business Intelligence Service at Warwickshire County Council.

From the responses of businesses across the service and manufacturing sectors, it gives scores out of 100 where anything above 50 indicates growth and anything below 50 is negative.

It looks at a range of aspects of doing business in the region, including the outlook for employment, investment, confidence, and current and future order books for both domestic and overseas sales.

In the vast majority of indicators, there was a drop compared to the previous quarter but, crucially, overall confidence remained above 50 while the overall economic out-

look had a score of 56.2.

Corin Crane, chief executive of Coventry and Warwickshire Chamber of Commerce, said: "The survey backs up everything we heard anecdotally at the end of 2025 that firms had been through a difficult and uncertain period. So many businesses were nervous about the Budget and the manufacturing sector had been hit by the JLR attack.

"However, what we started to see after the Budget was confidence starting to return and lots of things that had been put on hold were starting to move forward.

"The first few months of 2026 will provide an important indication of what is to come throughout the year. So, while there will be concern around this survey we have to take it in the context of

the period it was carried out."

Steve Harcourt, director of Prime Accountants Group which helped deliver the survey, added: "I know from my own client base that there was a huge amount of uncertainty but the last few weeks of 2025 felt much more stable and we are all hoping that this year begins on much more solid foundations from which companies across the region can grow."



WINTER SUPPORT

Preparing you for the winter months

Whether you need help with living expenses, accessing food, or finding a safe and warm community space. Rugby Borough Council is here to help you through the winter months.

We recognise the additional challenges that come with shorter days and colder weather.

Get support at rugby.gov.uk/wintersupport
Or call (01788) 533533



PHOENIX COACHES

	Adult	Child
February		
17th Pub Lunch.....	£30.00	£24.00
21st Telford.....	£25.00	£20.00
March		
3rd Melton Mowbray.....	£29.00	£22.00
7th York.....	£27.00	£22.00
17th Cotswold Market & Broadway.....	£27.00	£22.00
21st Afternoon Tea & Litchfield.....	£33.00	£28.00
31st Liverpool.....	£29.00	£22.00
April		
8th Cheddar Gorge & Clarkes Shopping Village.....	£30.00	£24.00
11th London.....	£30.00	£24.00
14th Cotswolds & Broadway.....	£29.00	£24.00
May		
5th Pub Lunch.....	£31.00	£25.00
16th Black Country Museum.....	£27.00	£24.00
26th Lunch & Entertainment.....	£37.00	
27th Skegness.....	£29.50	£24.00
Eastbourne - The Haddon Hall Hotel 29th March- 2nd April 26. 5 Days/4 Nights £320 Per Person Price includes- All coach hire, 4 Nights accommodation, Evening meal & Breakfast, 1/2 price bar, entertainment package, Day excursions & An Afternoon Tea		
Scotland- Waverley Castle Hotel 27th-31st May 26. 5 Days/ 4 Nights 425 Per Person Price Includes- All Coach Hire, 4 Nights accommodation, Evening Meal & Breakfast, Day Excursions, Admission to Falkirk Wheel, and Admission to Ainwick Castle		
Llandudno - The Chatsworth House Hotel 10th-14th August 26 5 Days/4 Nights £295 Per Person. Price Includes- All Coach hire, 4 nights accommodation, Evening Meal & Breakfast, Day excursions, Portmerion Village & 2 course meal and Welsh Highland Railway Journey		

www.phoenixcoaches.org.uk

Tel No 02476 350 811. 50 Southfield Close, Nuneaton. CV10 OBE

PUBLIC NOTICES

For all your latest information on
Planning Proposals, Traffic Notices,
Goods Vehicle Operator Licences,
Licences To Sell Alcohol and Probate Notices...

See
page
26



More upgrades have been approved for the Lias Line. s

Cycle route set to get another round of upgrades

by **Andy Morris**
andy.morris@bullivantmedia.com

THE LONGEST greenway in Warwickshire is set for more upgrades.

Warwickshire County Council's (WCC) cabinet has approved plans for more improvements to the Lias Line – a walking, wheeling and cycling route linking Leamington and Rugby.

Improvements to a quarter-mile section of the route between Oxford Road and Birdingbury Road, near Rugby, will be funded by a £322,700 grant from the government's Active Travel Fund.

The existing single-track path will be widened to a three-metre-wide, multi-user greenway with a 1.5-

metre 'trotting strip' for equestrians and a new stepped access and wheeling ramp at Birdingbury Road.

The investment forms part of a wider programme to create a traffic-free leisure and utility route between Leamington and Rugby.

The Lias Line improvements are being delivered by the Walk Wheel Cycle Trust – the charity formerly known as Sustrans, which owns and manages the Lias Line – with completion expected this year.

WCC's transport and planning spokesperson, Councillor Jennifer Warren, said: "We're delighted to continue our partnership with the Walk Wheel Cycle Trust to enhance the Lias Line for residents and visitors. These improvements will make walking, wheeling and cycling

easier, safer, and more enjoyable for everyone while helping to connect our towns and villages."

She said active travel routes improve health and back the rural economy by attracting visitors.

Coun Warren added: "This latest investment underlines our commitment to support active travel projects that deliver benefits for all of the residents of Warwickshire."

The Lias Line is part of the National Cycle Network and will connect with the WCC-owned Offchurch Greenway, adding to a growing network of traffic-free routes across the county.

Previous improvements upgraded more than four miles of the route, funded through earlier rounds of the Active Travel Fund and cash for the National Cycle Network.

Toddler death pair plead

A MAN and woman from Rugby have appeared in court and pleaded not guilty to charges in relation to the death of a 13-month-old girl.

Isabella Stasisk died in hospital on January 7, after being taken ill at a house in Rugby.

Kinga Wydrzynska, 25, of Johnson Avenue, and Michal Stasiak, 27, of Blackwood Avenue, were initially charged in January 2025, with murder and causing or allowing the death of a child.

Stasiak was also charged with possession of indecent images.

In December, both were fur-

ther charged with two counts of sexual assault in relation to Isabella, and three counts of assault/ill-treat/neglect/abandon a child/young person to cause unnecessary suffering/injury in relation to Isabella and two other children.

They appeared at Warwick Crown Court on Friday, January 9, for a procedural hearing to allow all counts to be joined at the same trial.

Both gave not guilty pleas to the five counts and were remanded by the court.

Their trial has been set for October 6.



Burglars snapped by CCTV

Car key burglars were caught on CCTV outside a home in Kenilworth.

POLICE are appealing for information after a series of car-key burglaries.

Between November 20 and 25, burglaries were reported in Kenilworth, Nuneaton and Binley. Officers are keen to speak to anyone who may have doorbell recordings of suspicious activity.

Anyone with information is asked to call West Midlands Police on 101, quoting crime number 20/449560/25.

A West Midlands Police spokesperson said: "Burglars and thieves often look to take advantage of the dark winter evenings by stealing cars and valuables.

"There are a number of things you can do to keep your homes and properties secured."

Visit <https://tinyurl.com/3dnf2and> for advice.

Visit www.youtube.com/watch?v=2RW7mCvku74 for CCTV footage of suspects at an incident in Kenilworth.

Appeal after pub violence

FIVE people have been charged and remanded in custody following large-scale disorder at a pub in Rugby on Boxing Day night.

Police attended the Albert Street pub after receiving reports of the disorder at 10.40pm. Witnesses reported violence erupted between two groups of men, some armed with knives.

Det Sgt Matt McGreevy, from Warwickshire Police CID, said: "We launched an investigation following disgraceful scenes while many people were out celebrating the festive season. "Fortunately, nobody was

seriously hurt and officers on the scene were quick to identify and detain some of those we believe to be involved, and seized a number of weapons.

"We are now working hard to identify and locate others involved and are appealing for anyone who witnessed the violence, who has any video footage of it, or anyone with other information that could help with our enquiries, to get in touch."

The following men have all been charged with affray and possession of a knife in a public place: Stefan Farrell, 21, of Garyth

Williams Close, Rugby; Kalvin Gilbert-Farrell, 18, of Poole Cessna, Rugby; Taylor Kessna, 19, of Selborne Road, Rugby; Ryan Macdonald, 22, of Richard Walker Way, Rugby; and Wesley Quigley, 21, of Maurne Road, Dublin, in the Republic of Ireland.

Anyone with information should contact www.warwickshire.police.uk or call 101. Quote incident 263 of 26 December 2025.

Alternatively, information can be provided, anonymously, to the independent charity Crimestoppers, on 0800 555 111.

For more information, or to book, please call **03332 342 514** Quote **osg**

just go.holidays ★ ★ ★ ★ ★ Trustpilot **Reader Travel**



RHS CHELSEA FLOWER SHOW
Departing Fri 22 May '26

Dubbed 'the garden equivalent of Paris Fashion Week,' the iconic RHS Chelsea Flower Show is a highlight event of the gardening season. The best of the botanical world gather for this prestigious flower show to display the latest in horticultural innovation.

SO MUCH INCLUDED...

- ✓ Return coach travel from Rugby, Coventry
- ✓ Overnight stay at a selected hotel outside London (IG3 or JG4 rating) with dinner & breakfast
- ✓ Admission to the RHS Chelsea Flower Show, with coach transfer

▶ **SAVE £20 - Quote OSG**
- Book by 30 Jan 2026



LITTLE TRAINS OF NORFOLK & THE MISSISSIPPI PADDLE STEAMER
Departing Mon 3 Aug '26

SO MUCH INCLUDED...

- ✓ Return coach travel from Rugby, Coventry
- ✓ 4 nights at the Prince Guest House, Great Yarmouth (IG2+ rating) with dinner & breakfast
- ✓ Heritage train journeys on the North Norfolk Railway & Bure Valley Railway
- ✓ Mississippi Paddle Steamer cruise on the Norfolk Broads
- ✓ Excursion to Cromer & Sheringham

Optional excursion to Norwich (£15pp)

▶ **SAVE £30 - Quote OSG**
- Book by 30 Jan 2026

2 Days by Coach only £319
Single Supplement £50

5 Days by Coach only £519
Single Supplement £80

These packages are subject to Just Go Holidays terms & conditions. Coach bookings are protected by Bonded Coach Holidays & the Association of Bonded Travel Organisers' Trust Ltd. All holidays are ATOL protected No. 10899. Prices are per person, based on two people sharing a room & based on bookings made up to 7 days post publication, after which prices may fluctuate. Choices of date, hotel, airport or pick up location may incur a supplement. Please see website or call for full details.

Visit us online at justgo.holidays.com/OSG f justgohols

033 numbers are free within inclusive minutes packages otherwise standard rates apply.

Giving more a sporting chance

A WINNING project has been praised for helping to get under-represented Coventry communities involved in sport.

Coun Naeem Akhtar, Cabinet Member for Housing and Communities at Coventry City Council, visited the volunteer-led Coventry Sports Cohesion Project as it held a session in Hillfields to encourage ethnic minority groups to get into sport.

The scheme is particularly targeted at people living in deprived areas such as Hillfields and Foleshill, which has a dense population of ethnic minorities.

The initiative developed further following the impact of the pandemic on the Black, Asian and Minority Ethnic communities in 2021.

Since its launch in 2021, the organisation has seen great success in young people's development and ability, with parents reporting greater satisfaction – and plans to continue to encourage more people to get involved.

Coun Akhtar said: "It was a pleasure to support some of the bright and talented young people in our city."

"We must recognise and highlight the importance of sports in our communities as a way to support young people's development and wellbeing in our communities, bridging the gap for those who are disadvantaged, so that equal opportunities are made available



for all young people."

Coun Naeem Akhtar with young participants in the Coventry Sports Cohesion Project in Willenhall.

Holocaust event offers all chance to remember

HOLOCAUST Memorial Day will be marked in Coventry by an event honouring genocide victims.

The international memorial day, which is held on January 27 each year, will be observed at an event at the Belgrade Theatre.

The free event will focus on this year's theme of Bridging Generations, to highlight that the responsibility of remembrance doesn't end with the survivors.

The event will remember the millions of people murdered during the Holocaust under Nazi persecution through guest speakers, music and moving performances.

The main speaker for this year's event is Jeanette Marx, a second-generation Holocaust survivor, representing Generation 2 Generation.

She will share her mother's experience of being transported to concentration camps from their home in Poland. Her mother used to share her experience as a speaker, but after passing away in 2012, Jeanette now takes that role.

Jeanette said: "Words of incitement to hate have only one purpose, to breed hate. That is why Holocaust Memorial Day is so very important. It reminds us how far hate can reach with disastrous consequences."

"My role is to pass on – to bridge from my mother's generation, to my own and then onto following generations – the message that we must live with respect, tolerance and acceptance of everyone, as

we are all human beings."

Reflecting Coventry's diverse population, including significant East African communities, the programme includes commemoration of the Genocide against the Tutsi in Rwanda.

Coun Abdul Salam Khan, Deputy Leader and Cabinet Member for Policing and Equalities at Coventry City Council, will also be speaking at the event.

He said: "We are proud to welcome people of all backgrounds to our city, and we will continue to be a welcoming city of sanctuary. Our city's past shows us how important it is to come together to build a positive, peaceful future."

"I am so proud of the support we provide as a city and will continue to play a part in promoting our role of being a City of Peace and Reconciliation so generations to come can continue spread this message."

Local poets, speakers, dancers and secondary school students will contribute to the programme throughout the event.

Coun Rachel Lancaster, Lord Mayor of Coventry, said: "It's important that we continue to promote the message of peace and reconciliation, whilst working with younger generations so they can take this forward in the years to come."

The event takes place from 12pm to 3.20pm on Tuesday January 27. Visit www.coventry.gov.uk/hmd to book a free place.

OFTEN IMITATED BUT NEVER EQUALLED

While all costs are going up - OURS ARE STAYING DOWN

Due to our customer friendly services of No Door Salesmen, No Showroom and little overheads



NEW FLUSH WINDOWS

BEAUTIFUL COMPOSITE DOORS
Fully fitted
Competitive Prices



UPTO 30% OFF ALL WINDOWS



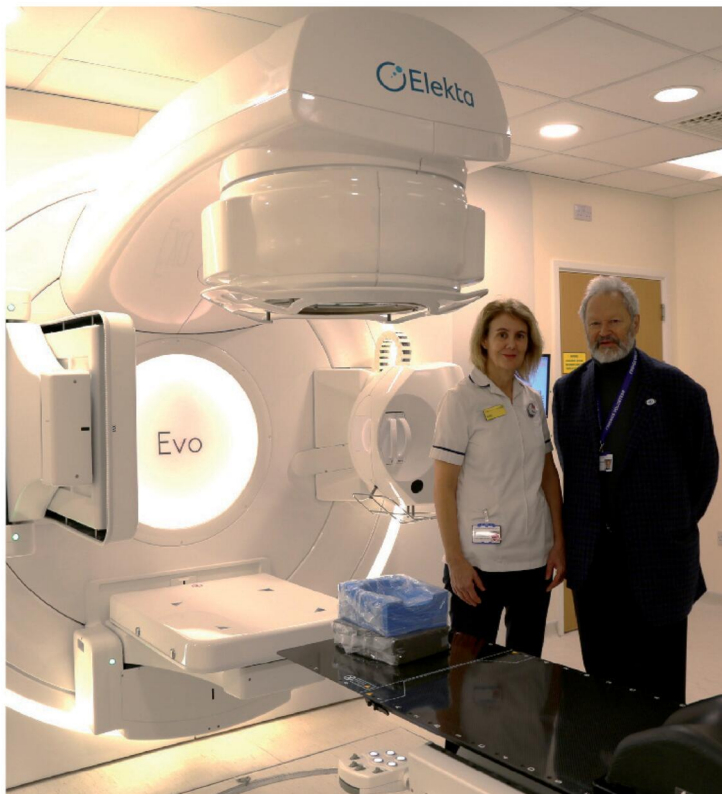
ALL PRODUCTS HAVE A 10 YEAR INSURANCE BACKED WARRANTY

BILL MOORE'S WINDOWS AND DOORS
A NAME YOU CAN TRUST

1 Brookside Close, Stratford-upon-Avon, Warwickshire CV37 9PL

01789 415171 • 07729 689239 • www.billmooreswindowsanddoors.co.uk

Rugby patient among first to try out new cancer treatment



Trial participant and Research Champion Willy Goldschmidt and Research Radiographer Vicky Sturgess, pictured with one of UHCW NHS Trust's Elekta Evo HD linear accelerators.

ity for treatment.

"This contemporary data with such a high cure rate is a combination of the advances in radiotherapy and the quality assurance that ensures our radiotherapy planning and image guidance are world class. These have all been a credit to our clinicians and radiotherapy team members.

"Many patients from this Trust were recruited to this trial and this has been a way of establishing the evidence we need to support SBRT

in prostate cancer. We have people who have benefited from this treatment and the first patient, who was treated in 2016, is doing very well. "SBRT is now our standard treatment for men with low risk and low-intermediate risk prostate cancer not requiring concurrent hormone therapy."

Prostate cancer is the number one cancer in males, with more than 55,000 men diagnosed with the disease in the UK each year.

Offering new hope to thousands

by Andy Morris
andy.morris@bullivantmedia.com

A'DELIGHTED' Rugby resident who has taken part in a trial of new radiotherapy treatment for prostate cancer patients has praised the procedure as 'life-changing'.

Willy Goldschmidt is among a group of patients from University Hospitals Coventry and Warwickshire (UHCW) NHS Trust who have taken part in the international trial – initial data from which has offered new hope to tens of thousands of prostate cancer patients.

Results show that higher doses of targeted radiotherapy given each day over five days – called Stereotactic Body Radiotherapy (SBRT) – has a high equivalent cure rate compared with the standard four-week course.

Mr Goldschmidt, the President of the Friends of St Cross Hospital charity, said being given the opportunity to receive the condensed radiotherapy schedule was 'life-changing'.

He was diagnosed with prostate cancer in 2017. Following his diagnosis, he met with consultant urologist Mr Donald MacDonald, who presented him with two curative options: surgery or radiotherapy.

Mr Goldschmidt said: "I was introduced to the SBRT trial, offering the option of a condensed radiotherapy schedule – five treatments over two weeks instead of the standard 20 over four weeks.

"The idea of a condensed radiotherapy schedule sounded appealing, with fewer hospital visits and no invasive surgery to recover from. I accepted the offer, and when I found out I had been randomly selected to the SBRT

arm of the trial I was delighted.

"The shorter treatment schedule had minimal impact on my daily life, and I was able to carry on with my day-to-day activities as normal. I felt very well supported throughout the process and was reassured by the clinical staff at every stage of the treatment.

"Being part of the trial means I still have follow-up checks, and my latest follow up in October came back with an all-clear result. I'm now eight years on from my initial diagnosis and treatment, and it's safe to say the treatment and follow up monitoring has been life-changing for me in that it has removed any concerns I might have had about this potentially lethal disease.

"I feel privileged to have been given the opportunity to take part in a trial that could change prostate cancer treatment for others. I now volunteer as a Research Champion for the Trust and fully advocate patients taking part in research trials."

The trials aimed to establish the new five-fraction SBRT treatment as the standard for localised prostate cancer.

Andrew Chan, Consultant Clinical Oncologist at UHCW NHS Trust, says data from the trial, which has involved more than 870 prostate cancer patients across the world, is very encouraging.

He said: "This is a pivotal, practice-changing result because it means that for this highly prevalent cancer we are able to reduce radiotherapy treatment to only a quarter of the current standard – from 20 days to five days – with the same clinical benefits.

"That would be such a game-changer for both patients and for the NHS in terms of less visits to hospital, so patients can return to their usual activities quicker than normal, and it generates more capac-

COUSINS FURNITURE

WINTER SALE

Hurry! Extra Sale Discounts - Final Week!

Interest Free Credit Available

Healey Table + Bench + 2 Chairs **EXTRA DISCOUNT PRICE** £1749 (was £2549)

Birmingham Chesterfield 3.5 Seater Leather Sofa **EXTRA DISCOUNT PRICE** £1599 (was £2299)

Tetbury King Size Bed Frame **EXTRA DISCOUNT PRICE** £999 (was £1379)

Living | Dining | Sleeping | Flooring

Interest Free Credit available on all orders over £500. REPRESENTATIVE EXAMPLE. Cash price £600. Interest rate 0% fixed. No Deposit, then 12 payments of £50. 0% APR Representative Total amount payable: £600. Subject to status. Written details on request. Offer not available on clearance items, or in store concessions.

BIRMINGHAM • DUDLEY • NEWCASTLE-UNDER-LYME • SHREWSBURY



The Myton Hospices is hoping to stir up some generosity with its Brew Good campaign.

Stirring up support

CAFFINE-fueled fundraisers are invited to do something brew-tiful for The Myton Hospices this February.

Communities across Coventry and Warwickshire are being encouraged to come together over a cup of tea and a slice of cake in support of hospices' Brew Good for Myton campaign.

Supporters can get involved by hosting a coffee morning, bake sale, or a combination of the two, bringing together friends, family, colleagues, schools and local communities to help raise vital funds for their local hospice. It offers the perfect opportunity to enjoy a cuppa while making a meaningful difference to people living with life-limiting illnesses in the local area.

Whether homemade bakes or shop-bought treats are on offer, every cup poured and every cake shared helps The Myton Hospices continue to provide specialist care and support to patients and their families across Coventry and Warwickshire.

Community fundraising manager Rachael Ryan said: "During Brew Good for Myton, we hope to see our community come together to show their support for Myton. Every cup shared and every cake enjoyed will make a difference to the lives of patients and their families across Coventry and Warwickshire. By taking part, supporters are helping us continue to provide the essential care people need and deserve."

Visit www.mytonhospice.org/ Brew for more details.

Looking back on a successful decade

THE CEO of The Myton Hospices has thanked communities for their unwavering and on-going support as she marks a decade at the helm.

Over the past ten years, Ruth Freeman has ensured people living with a life-limiting illness across Coventry and Warwickshire have received the very best palliative and end of life care.

During her tenure as CEO, almost 13,000 patients and their families have been supported by Myton's teams across their three hospices in Warwick, Rugby and Coventry and in the community.

Ruth's time as CEO has been defined by a commitment to meeting the changing needs of the communities the charity serves. Under her leadership, The Myton Hospices has introduced a number of nationally recognised initiatives and developed a range of new and existing services.

Ruth said: "It's hard to believe that I have been CEO at Myton for ten years, the time has literally flown by. It's not surprising when you consider all of the wonderful opportunities the role has given me, not least to meet so many amazing people and to work alongside a team of committed staff, volunteers and supporters all dedicated to going the extra mile for patients and their families."

"Of course, there have been chal-



lenges along the way - Covid what a resilience test that was, but I look back with pride when I remember how the whole Myton family and thousands of people and organisations across Coventry and Warwickshire pulled together to ensure Myton could continue providing vital services to those who needed them most.

"Currently our biggest challenge and one affecting the whole hospice sector is the lack of government funding, and we, alongside our hospice colleagues from across the UK are fighting for funding reform to ensure the sustainability of vital Palliative and End of Life care services for everyone."

"Fortunately, unlike many hospice-

es we have not yet had to cut services, this is due to a lot of hard work by our Income Generation teams but also because of the unwavering support of our local communities and I cannot thank them enough for the difference they have enabled us to make and continue to make to thousands of people each year.

"The biggest privilege of course for me is meeting so many inspirational patients and their families - the courage, love and even humour they show throughout the greatest of adversity is truly moving."

Ruth Freeman is celebrating ten years at the helm of The Myton Hospices.



The Railway Touring Company





Saturday 7, 21, 28 February 2026

Steam to Carlisle.

This day trip provides a wonderful opportunity to get out and about during the winter months, with the added bonus of steam haulage over the Northern Fells, including the spectacular Settle & Carlisle Railway.

We have a high speed journey down the West Coast Main Line to Carnforth, hauled by a blue Class 86 electric locomotive. We then enjoy a circular steam tour outwards via Shap to Carlisle and back via the Settle and Carlisle line. We return from Preston to London behind our blue electric locomotive.

- Departs Rugby and Nuneaton
- From £115 per person
- Premier Dining available

Winter Cumbrian Mountain Express

MAGNIFICENT LOCOMOTIVES • SCENIC JOURNEYS • FASCINATING DESTINATIONS

For more information please visit railwaytouring.net or phone **01553 661 500**





Bird flu has broken out at Ryton Pools Country Park.

Park urges all to stick to paths after bird flu case confirmed

by **Philippa Mingins**
 philippa.mingins@bullivantmedia.com

ANOTHER case of bird flu has been confirmed in Warwickshire.

Ryton Pools Country Park, near Ryton-on-Dunsmore, highlighted an outbreak on Sunday January 11 via its social media channels.

A spokesperson for the site urged visitors to stick to footpaths, keep dogs on leads and avoid contact with dead or sick birds. They also advised against handling feathers or any surface contaminated with bird droppings.

Those who keep poultry or other birds at home have been advised to wash their hands and disinfect footwear after their visit.

Anyone who identifies any dead birds at the park has been asked to report them to The Department for the Environment, Food and Rural Affairs (Defra).

This latest case follows outbreaks of avian flu among geese along the River Avon in Stratford and in wild bird populations at Kingsbury Water Park in December.

Dr Shade Agboola, director of public health at Warwickshire County Council, said: "The incidence of avian flu in the wild bird population is something that we are taking very seriously.

"The UKHSA has made it clear that the

risk of the disease transferring from birds to humans is considered to be very low. To ensure this situation remains, members of the public should not touch or go near sick or dying birds and any dead birds found should be reported to DEFRA."

Mamoona Tahir, consultant in health protection leading on avian influenza for UKHSA West Midlands, added: "The risk to the public from this strain of avian flu is very low, however it is important that people do not touch any sick or dead birds.

"As a precaution, anyone who may have come into contact with the droppings or birds in an area where the infection has been confirmed will be monitored and offered a course of antiviral medication if needed."

Anyone who has come into contact with sick or dead birds or their droppings, in an area where the infection had been confirmed, is urged to notify the UK Health Security Agency's West Midlands Health Protection Team on 0344 225 3560 so public health experts can determine if antiviral medication and active surveillance of their condition was necessary.

It is likely that avian flu is circulating more widely across Warwickshire. If anyone sees sick or dead birds by waterways or on private land in the surrounding areas in Warwickshire, should do not touch them and should call the Defra helpline on 03459 33 55 77.

Planning for Spring

with the garden lovers' garden centre

Harefurlong Nurseries

www.farnboroughgardencentre.co.uk

A traditional garden centre that focuses on providing quality plants, garden products, homeware & Gifts

GARDEN SEEDS

SEED POTATOES

SUMMER BULBS

TEDDY LOVERS
 Come & visit our Treasured Teddies shop & see our huge range of bears, Cuddly collectables & furry friends including loveable limited editions and everyday huggables

**On A423 Southam Road,
 Nr Farnborough,
 Banbury OX17 1EL
 Tel: 01295 690479**

OPEN SIX DAYS A WEEK
 Tues-Sat 9.00am-5.00pm
 Sun 10.30am-4.30pm
 Open Bank Holiday Mondays

A world of Choice

**WHERE THINGS FOR YOUR GARDEN
 WON'T COST YOU THE EARTH**

**For all the latest news and features
coventryobserver.co.uk**

Mayor's move aims to make new home schemes more affordable

by **Andy Morris**
andy.morris@bullivantmedia.com

'ESSENTIAL' new affordable homes are coming to Rugby – one of a series of developments aimed at easing the region's housing crisis.

The former General Electric Power Conversion UK site in Projects Drive will be turned into a 108-home development including 72 social rent properties – the most affordable type of housing – with the rest to be made available for shared ownership.

The six-acre development, funded by a \$2.6million investment from West Midlands Mayor Richard Parker, is also being backed by Homes England and will feature a mix of apartments, maisonettes and houses.

The scheme, which is being built by Morro Partnerships on behalf of not-for-profit housing provider Orbit, will rehouse some of Orbit's existing customers from the nearby Hollowell Way estate, which has been earmarked for demolition and redevelopment.

The development is part of Mr Parker's project to build 2,000 new social homes every year across the region by 2028, to help tackle the housing crisis.

He said: "Everyone deserves a safe, warm place to call home, but we're facing a housing crisis because



Richard Parker, Mayor of the West Midlands, is ramping up the construction of more social homes to help tackle the region's housing crisis.

working with local recruitment partners, colleges, education providers and third sector organisations to open up training and job opportunities for hard-to-reach people such as care leavers and ex-forces personnel.

Simon Preston, managing director at Morro Partnerships, added: "This scheme demonstrates our commitment to building high-quality, sustainable housing while creating local job and apprenticeship opportunities as well as enhancing the local area through our social value initiatives."

In November, Housing Secretary Steve Reed announced up to \$1.7billion for the region's ten year Social and Affordable Homes Programme, which could fund at least 10,000 affordable new homes across the West Midlands over the coming decade.

And the Mayor's mission to build more social housing secured a further boost in October with a new \$40million Social Housing Accelerator Fund.

The money, secured by cutting red tape surrounding existing housing funds, will be used to convert 1,000 properties that are ready for occupation, under construction or soon-to-be-built, to social rent homes.

Those will be on top of over 750 social rent homes the Mayor has already unlocked since taking office in May last year as part of his ongoing 'Homes for Everyone' priority.

of years of chronic underinvestment in social and affordable homes.

"This has left too many families stuck in temporary accommodation or poor-quality private rents. That's not acceptable, which is why I'm committed to building the genuinely affordable homes our communities so badly need.

"Projects Drive is the latest example from a new wave of investment I'm making to tackle this prob-

lem. And it's not only delivering essential homes but also helping to regenerate the local area and providing work and training opportunities – supporting my mission to get 93,000 people into quality jobs over the next decade."

Phil Andrew, chief executive at Orbit said: "We are proud to be working alongside Mayor Richard Parker and Morro Partnerships to deliver much-needed, quality, afford-

able housing in Rugby to help meet local housing needs.

"This is the first step in an exciting long-term investment for this community that will help provide more people with good quality homes that they can afford, in a place that they are proud to live, and we look forward to getting work underway."

To carry out the redevelopment, Morro plans to create new jobs and construction apprenticeships by

THE JONES FAMILY JEWELLERS

IN-HOUSE
JEWELLERY
REPAIRS

FINE
JEWELLERY
EXPERTS

CASH FOR
GOLD & SILVER

WATCH
BATTERIES
& RESEALS

WATCH
STRAPS & PEARL
RESTRINGING

SATCHWELL WALK,
LEAMINGTON SPA
01926 882552

TALISMAN SQUARE,
KENILWORTH
01926 954271

ROYAL PRIORS,
LEAMINGTON SPA
01926 893393

WWW.TJFJEWELLERS.CO.UK



FOR APPOINTMENTS EMAIL: ENQUIRIES@TJFJEWELLERS.CO.UK

PROFESSIONAL
JEWELLER
— Awards 2025 —
RETAIL TEAM
WINNERS 2025

THE BED FACTORY

Trading since 1989
3 floors full of beds
(We are bigger than we look)

Attention Arthritis Sufferer's

Revealed The Hidden Secret Of How To Massively Reduce Pain And Discomfort, Without The Need For Expensive Drugs Or Surgery!!!!

**6 TYPES OF ELECTRIC
ADJUSTABLE BEDS NOW ON
SHOW SOME WITH MASSAGE**

Mammoth Centre of Excellence
We at the Bed Factory Leamington are proud to have been awarded by Mammoth the title of Centre of Excellence. This is due to the fully trained staff and the display of the complete range of the new Mammoth Medical grade mattresses. We are recommended by Chiropractors and Doctors for our range of pressure relieving mattresses.



CHARTERED SOCIETY OF PHYSIOTHERAPY



**KING FOR DOUBLE
ON ALL
MATTRESSES**

Look at our
trustpilot reviews at
uk.trustpilot.com

**Mammoth new range of
mattresses now on show.**

For the last decade Mammoth has built a reputation as a leader in health and wellbeing – the brand that brought Medical Grade™ foam and PostureCells® to the mattress market. Scientific testing, health award wins and an exclusive partnerships with the Chartered Society of Physiotherapy have made it the go-to name for those who need genuine comfort, pain relief and a great night's sleep.

Born out of healthcare and based on the pressure relieving materials used in medical beds on spinal injury units, Mammoth's secret ingredient is Medical Grade™ foam – a naturally cooling, pressure-relieving but supportive material that's shown to be far superior to standard memory foam.

Unlike memory foam, Medical Grade™ foam doesn't require heat to become pliable, nor does it lock sleepers in place where they may seize up with aches and pains. Instead, Medical Grade™ foam instantly contours to the body and provides a supportive yet flexible surface that aids natural spinal alignment.

This is complemented by Mammoth's innovative PostureCells® – independently moving castellations in the foam that provide even support but reduce partner disturbance. Importantly, the air channels between each PostureCell® also serve to wick away the moisture and allergens that typically build up through the night.

Testing excellence

Under laboratory conditions, Medical Grade™ foam mattresses have been found to provide **46% greater pressure relief** and **69% faster cooling** than standard 50kg memory foam. For sleepers that means:

- Improved circulation through the night
- Faster recovery and healing
- Reduced overheating
- Reduced perspiration
- Improved hygiene

Determined to go further, Mammoth also put its mattresses through testing at Northumbria University's Centre for Sleep Research. In clinical trials it was shown that Mammoth's mattresses helped sleepers **fall asleep 29% quicker**, experience a **7% increase in sleep efficiency** and report a **21% increase in sleep enjoyment**.

Award wins

Mammoth's unique technologies helped the brand to win a Bright Ideas in Health award for pressure relief and temperature regulation – awards usually reserved for teams working within the NHS.

These impressive results are among the reasons why Mammoth has become the go-to name for elite athletes and professional sports stars – as can be seen through partnerships with the Rugby Players' Association, British Athletes Commission and Professional Cricketers' Association over the years, as well as relationships with Premier League football teams and Olympians.

Combatting back pain

The unique properties of Mammoth's sleep and comfort technologies have made it the go-to mattress range for health professionals. By improving pressure relief, enhancing postural support and increasing circulation, physiotherapists in particular love the positive patient outcomes offered by Mammoth. With over 50% of adults now estimated to suffer from back pain in their lives, it's never been more important to invest in the very best sleep surface to ease pain and discomfort.

Want to make a healthy choice and upgrade the quality of your sleep? Try the Mammoth Bed Test Centre at The Bed Factory now.

Leamington's Largest Independent Bed Retailer

We can supply a large range of beds in 1 to 2 weeks - 3' Single Beds also available - WE SUPPLY WHEN OTHERS FAIL

139 Regent Street, Royal Leamington Spa, CV32 4NX

01926 422404

sales@thebedfactory.co.uk
and www.thebedfactory.co.uk



Top marks for three town schools

by **Andy Morris**
andy.morris@bullivantmedia.com

A TRUST which runs three schools in Rugby has published its annual report.

The Transforming Lives Educational Trust (TLET), which runs Ashlawn, Henry Hinde and Houlton schools, has released its Impact Report 2025.

Highlights include Ashlawn School being rated 'good' across every Ofsted inspection area in June.

Ashlawn was also in the top 10 Warwickshire Schools for GCSE results, with a school-record number of students securing their first-choice university following their sixth-form studies.

There was a 14 per cent increase in early years pupils achieving 'good levels of development' in the past two years, and combined Key Stage 2 outcomes were up 11 percentage points, in comparison with the previous year.

The trust saw an increase in teacher retention with staff sickness absence rates also lower than the national average.

In 2025, the trust also announced plans to add a primary offer and a sixth form at Houlton School, and is currently consulting with the community to bring Henry Hinde Infant and junior schools together onto one site.

Chair of trustees Guy French

said: "As we reflect on the past 12 months there is much to be proud of – all of our schools are developing, performance data has strengthened and we have celebrated incredible praise from Ofsted.

"However, what truly stands out to me within the report is that we have progressed as a community, and we are seeing the benefits of being part of our family of schools becoming ever more tangible and real.

"TLET's trustees and leaders are accountable for ensuring that we are delivering on our ambitions for our communities. This report shows that we are doing all that we can to achieve that.

"At every level, we are growing and strengthening our offer for the communities that we serve. Looking forward to the year ahead, we'll be continuing to enhance the strength and expertise we can offer as a trust."

Trust CEO Helen Stevenson added: "Behind the data and statistics, there are dedicated staff delivering inspiring curriculums and enrichment opportunities that have opened up new worlds for our young people.

"We remain committed to doing all we can to support our students and staff to flourish, it is our role as a trust to put the foundations in place to make that happen."

Visit www.tlet.org.uk/about-us/our-impact to read the report.



Henry Hinde pupils at play.s

CAKE DELIVERY: Pharmacists in Rugby were prescribed treats by a care home for national pharmacists day.

Staff and residents at Overslade House honoured their local health service by delivering home-baked cakes prepared by the home's head chef Corey Leake, to thank staff for their selfless service in helping residents' with their health and wellbeing.

Clinical lead Glory Rajamani and activities coordinator Martin Higgs visited local pharmacies to deliver the cakes.

National pharmacists day is on



Overslade House activities coordinator Martin Higgs presents cakes to staff at the Hospital of St Cross pharmacy.

January 12 every year to recognise the role played by pharma-

cists in society to better our lives and health.

Genoveva Tamasi, acting general manager at the home, said: "Our local pharmacies are invaluable to our home and residents, with their expertise and knowledge so we wanted to take the opportunity to let them know just how much we appreciate all that they do for us."

Overslade House resident John added: "I feel secure knowing my health and wellbeing needs are taken care of by Overslade House and our pharmacies, and I can't thank them enough."



10 YEARS WARRANTY ON SHUTTER BLINDS

Available in beautiful and stylish Hard Wood and Faux Wood

WE WILL BEAT ANY LIKE-FOR-LIKE QUOTE

Visit us at: 21 Brixham Drive, Coventry, CV2 3LA

Email: info@brixham-blinds.co.uk

Contact us today for a **FREE** no-obligation quotation

T: 02476 666686 brixham-blinds.co.uk

BRIXHAM

BLINDS

Residential and Commercial

Brixham blinds are a well-established blinds company offering to trade and consumer. With a great range of quality bespoke and made to measure blinds by an established blind company you can trust.

Whether you're thinking of vertical blinds, roller blinds, venetian blinds or roman blinds, shutter blinds, all of our blinds come with child safety regulations and fittings to make sure your home is safe.

Young leaders recognised



From left: Gabriel Soloman (under-sheriff), Max Allen (young high sheriff), High Sheriff of Warwickshire Karen Lynch MBE and Kaiya Grossett (under-sheriff).

by Andy Morris
andy.morris@bullivantmedia.com

PROUD students at a Rugby secondary school have taken on community leadership roles.

Students from Ashlawn School took part in the Rugby Young High Sheriff programme, an initiative led by the High Sheriff of Warwickshire.

The project invited them to explore issues affecting their community, giving them a platform to share their views and help influence change.

Using a series of interactive

workshops, students developed ideas and action plans designed to make a positive impact in Rugby and beyond.

The programme culminated in a Young High Sheriff Winners Event at the school, attended by High Sheriff of Warwickshire Karen Lynch MBE; Rugby mayor Barbara Brown; and other local dignitaries.

Max Allen was named young high sheriff, with Kaiya Grossett and Gabriel Soloman appointed as under-sheriffs – a tradition that celebrates leadership, responsibility, and community spirit among young people.

The newly appointed student leaders will act as ambassadors for

Rugby's young people, representing their peers at events and promoting positive engagement in the school and community this year.

Paul Brockwell, executive principal at Ashlawn School, said: "We are incredibly proud of Max, Kaiya and Gabriel for embracing this opportunity with such enthusiasm."

"The Young High Sheriff programme encourages students to think critically about real-world issues and empowers them to lead change."

"Their appointment reflects their commitment to making a difference – both within Ashlawn and across our wider community."

The Young High Sheriff initiative

reimagines an historic civic role, focusing on areas such as crime prevention, community impact, and youth leadership.

It aims to provide students with opportunities to develop confidence, teamwork and a sense of civic duty.

Mr Brockwell added: "We're passionate about developing confident young people who understand their ability to influence the world around them."

"This initiative perfectly captures that spirit. We're thrilled to see Ashlawn students leading with such maturity and we look forward to seeing the positive impact they will continue to make."

Help with winter bills

WINTER support services are on offer to Rugby residents.

Seasonal services from Rugby Borough Council and its partners have been made available in one location on the council website.

Eligible residents can get reductions on water bills from Severn Trent Water, and support with energy debts and repairing broken boilers and heating systems, from Act On Energy.

The Warm Home Discount Scheme is offering a £150 discount on electricity bills which is usually applied automatically.

Residents who are struggling with living expenses can get support with payments such as attendance and carer's allowances and pension credit.

Support is also available for people and families who need help accessing food, including from services such as the Rugby Foodbank and free school meals for children.

Warm hubs across Rugby are open every day of the week and provide hot drinks, wi-fi and the chance to connect with others.

Councillor Claire Edwards, spokesperson for communities, homes, regulation and safety, said: "We encourage all residents to check whether they are eligible for the winter support services available. We are here to help ease the financial pressures that come with winter months, ensuring that all Rugby residents can get the support they need."

People can go to www.rugby.gov.uk/wintersupport or visit the town hall and speak with an adviser for more information.



OUR BIG SALE IS STILL ON

INFLATION EVERYWHERE - BUT NOT AT CARPET MILL!

Everything is going up in price, the same for Carpets and this is why it pays to go to Carpet Mill. Manufacturers of yarn and other materials for making carpets have all had price rises and some manufacturers are busy changing their specifications to many ranges to compensate. They also get surplus rolls that they cannot sell to the big stores as they don't have enough stock left to service them.

Therefore, we are buying those rolls at a FAT DISCOUNT and passing it on to YOU.





Everything Reduced
BE QUICK

BRAND NAME CARPETS AT LOW LOW PRICES

CARPET MILL

CROMWELL STREET (OFF RED LANE) COVENTRY CV6 5EY TEL: (024) 7666 1985

SOME CUSTOMERS TRAVEL MILES - YOU DON'T HAVE TO - WE ARE HERE

www.salecarpet.uk



Plan to turn historic Coughton Court into a community hub



A new chapter: Magnus and Imogen Birch Throckmorton outside Coughton Court with their children Isabella and Hector.

by Ian Hughes
ian.hughes@bullivantmedia.com

COUGHTON Court is looking to become the heart of the community as a new chapter begins in its long history.

The Throckmorton family have unveiled a new vision for the country estate near Alcester, ahead of resuming its day-to-day running this year following a period of National Trust stewardship.

Magnus and Imogen Birch Throckmorton – descendants of Sir Robert Throckmorton, who built the house in 1409 – have ambitious plans.

The young couple, who already

call Coughton Court home, with their children Isabella and Hector – and manage the estate’s gardens – will be resuming the running of the house and estate in February, taking over from the National Trust.

The couple want to showcase the estate’s heritage while also making it a hub of the community.

At the heart of the plans, the stableyard will be home to a new cafe, serving freshly grown and local produce; an independent shop showcasing local products; and an exhibition space for hosting events, workshops and school visits. A new children’s play area will also be installed.

A programme of events will also be announced, including seasonal favourites such as easter egg hunts

and Halloween pumpkin races, along with pizza evenings and “foodie feasts”.

Keen to support local creatives and businesses, Coughton Court will also host a programme of workshops and classes led by groups and artists and including indoor and outdoor activities.

Workshops

From yoga in the orchard and painting workshops to supper clubs, the Throckmorton family are keen to strengthen the estate’s ties to the local community.

Magnus said: “As a young family, we’re looking forward to bringing a fresh perspective to the day-to-day running of Coughton Court that

celebrates the property’s unique characteristics.

Our hope is to establish Coughton as a community hub – a destination that not only draws visitors from far and wide to soak up its incredible history but is also a welcoming space for locals to enjoy a coffee and connect with friends.”

Imogen added: “Historic stately homes like Coughton were once the beating heart of village life. We’re excited to restore this by supporting and partnering with local businesses, community groups and the wider community to explore fresh ideas, events, experiences and collaborations that breathe new life into the estate.”

Coughton Court has been the Throckmorton family home for

more than 600 years. In 1946, the estate was gifted to the National Trust and, since then, the family has held a 300-year residency and management lease. That allows the family to live at the property and manage it as a visitor attraction.

In 2005, a 15-year management agreement was put in place and the National Trust took on operational running of the property. That agreement was extended on a rolling, yearly basis to provide more time to work through future arrangements as well as accommodating a pause during the coronavirus pandemic.

While the Throckmorton family will be resuming the day-to-day management, the National Trust will continue to care for and preserve the property.

20% Off January Sale NOW ON!

Coventry and Warwickshire's Largest Bathroom and Kitchen Showroom with 3-floors hosting over 300 displays

You name it we do it. Design. Supply. Fit.

Sit back and let one of our expert designers create your dream space



City Bathrooms
Kitchens & Bedrooms
Est over 38 years



FREE LED Mirror with any fully fitted bathroom. Valid till 31st Jan!

BATH OUT, SHOWER IN
NOW ONLY £3,999

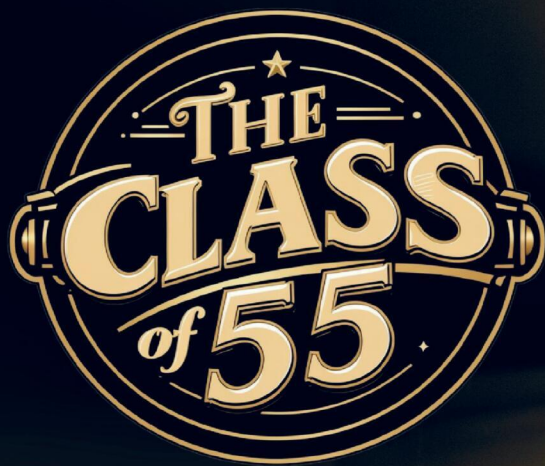
Bring in your measurements or pictures for a Free and Instant quote

Family-run for over 38 years

City Bathrooms & Kitchens
024 7636 5877 | citybaths@gmail.com
www.city-bathrooms.com
158 Longford Road, Coventry, CV6 6DR

Why Choose City?

- ✓ Over 38 Years of trusted installations
- ✓ 1200+ 5 ★ Google & Checktrade Reviews
- ✓ Family-run, local business
- ✓ Complete service from design to installation
- ✓ 3 Floor Showroom, Open 7 days a week

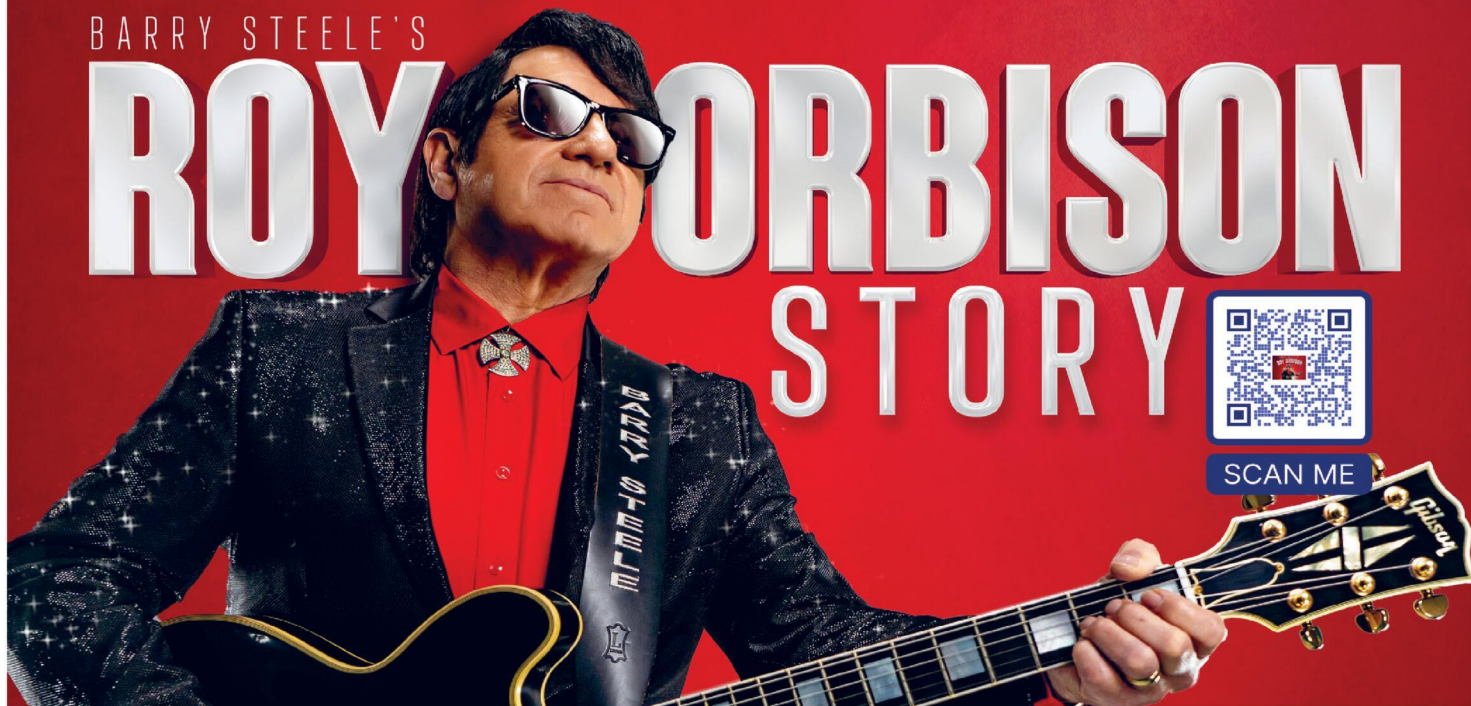


A ROCK N ROLL REWIND - 100% LIVE - WITH BIG SCREEN, LIVE BAND & TOP TRIBUTES TO BUDDY HOLLY & JERRY LEE LEWIS

**THE CORE THEATRE SOLIHULL 29 JAN - 0121 704 6962
 BEDWORTH CIVIC HALL - FEB 6 - 0333 666 4466
 STOURPORT CIVIC - 7 FEBRUARY - 01299 823339
 THE ROSES TEWKESBURY -26 MARCH - 01684 295074
LMSWORLDWIDE.ORG/EVENTS**

BARRY STEELE'S

ROY ORBISON STORY



SCAN ME

**Loughborough Town Hall - Jan 31 - 01509 231914
 Wolverhampton Grand Theatre - 4 Feb - 01902 42 92 12
 Cheltenham Town Hall - Feb 13 - 01242 528764
 The Assembly Leamington Spa - March 6 - lmsworldwide.org/events**



Roadside checks carried out during Op Limit.

Funding shortage threat to officers

WEST MIDLANDS Police could lose up to 80 police officers in the coming year - according to the Police and Crime Commissioner.

This comes after the government announced a funding shortfall totalling \$41million to policing in the region.

The PCC, Simon Foster, says he is 'deeply concerned and frustrated' by the news, which could partly undo recent progress made in recruiting additional police officers after years of austerity.

Mr Foster was aware of a £27million gap in the finances and had worked with the force to earmark savings in 2026/27, but before Christmas the problem worsened when he was told there is likely to be a \$41million black hole instead.

Finance Chiefs at the force and the Commissioner's office are now working to balance the books, but Mr Foster is concerned the adverse funding news could mean the number of neighbourhood police officers on the beat has to reduce.

The Commissioner is already asking the public if it is prepared to pay an extra £15 per year in council tax, on an average band D property, to cover some of the shortfall.

In addition, the force thinks it can use around £5.5million from its reserves, which are usually held back for a rainy day, and make savings and efficiencies of around £12million.

It is thought this will not cover



PCC Simon Foster is demanding West Midlands Police is funded more fairly amid a funding shortfall of up to £41million.

Arrests follow crackdown

MORE THAN 300 arrests were made in the West Midlands during a Christmas crackdown on road safety and drink and drug driving - a 15 per cent rise on the previous year.

During December, West Midlands Police carried out a number of operations including roadside checks, Multi Agency Road Safety Ops (Marso's) and acted on information on those suspected of driving under the influence as part of Op Limit.

The force said 314 people were arrested for drink or drug driving offences across the West Midlands including professional drivers, delivery drivers, community care workers and mechanics.

Supt Jack Hadley, Head of Roads Policing Unit, said: "There is no excuse to ever get behind the wheel while under the influence of alcohol or drugs."

"The devastating impact on other drivers, pedestrians and the life changing consequences should be a

strong enough reason to not drive under the influence.

"Unfortunately, these figures show that people are still willing to get behind the wheel and put other people's lives at risk. This is why these operations are so important.

"This may have been our festive campaign but it's important to stress we're carrying out activity day in, day out, to keep the West Midlands roads safe. But we can't do this alone.

"If you suspect someone of driving under the influence of drink or drugs. Report them. You can do this anonymously and it could end up saving lives.

"With the announcement of the new Road Safety Strategy, we want to reinforce our commitment to road safety.

"We will continue to work with our communities and partners, including local councils, charities and transport for West Midlands to create safer roads for everyone."

the full funding gap.

Mr Foster said: "I am deeply concerned and frustrated by this news from government. It is completely unacceptable to the people of the West Midlands.

"I have spent years campaigning, acting and working to rebuild neighbourhood policing and just as we were starting to see extra officers recruited we get this awful news, which could see up to 80 officers taken away again.

"This will be a real body blow to communities who tell me they so

desperately need more police out on the streets to prevent and tackle crime and keep people, families, businesses and communities safe and secure.

"I am writing to the government, calling on Ministers to work with us to find the much-needed funding that will fix this problem."

Before the news broke, West Midlands Police was projected to have 520 fewer police officers, by April 2026, than in 2010. This funding announcement could see that number climb to 600.

pound for £ they are the best!

INTERNATIONAL METALS & CABLE RECYCLING LTD

We purchase all Ferrous and Non Ferrous Metal Batteries and Cables

Collection Service Available

Long Marston Road, Long Marston, Stratford Upon Avon, Warwickshire, CV37 8AQ

01789 721 288

david@imrltd.co.uk

Open Mon/Fri - 8am - 5pm

Give your kitchen a fresh NEW LOOK

Joe's Doors & Overlays

★★ NOW AVAILABLE ★★
BUY NOW PAY LATER*

Upgrade your kitchen with flexible payments.
 Just a 10% deposit - nothing more to pay until 2027.

CALL NOW FOR MORE DETAILS

At Joe's Doors, we specialise in transforming kitchens without the disruption, stress, or sky-high cost of a full renovation. By replacing your existing doors, panels, and trims, we give your kitchen a stunning new look that feels like a complete miracle. Most transformations are completed in just two days, and there's no need to empty your cupboards.

- ★ **No mess, no fuss – just beautiful results**
- ★ **Most fitted in as little as two days**
- ★ **Wide range of designs to suit any style**
- ★ **Custom-made to fit your existing units**
- ★ **Quality materials, expert workmanship**

Whether you're going for a fresh, contemporary vibe or something timeless and traditional, we have hundreds of options to help you.

Complete your transformation with a Quartzize natural stone overlay – the smart, stylish way to update your worktops without the hassle of removing them. These elegant stone overlays fit



seamlessly over your existing surfaces, delivering a luxury finish.

Why choose Quartzize?

- Timeless and elegant design
- Non-porous and hygienic
- Incredibly easy to maintain

We're here to help you create a space you'll love – with a more wow factor.

Book your completely free, no-obligation consultation with Joe's Doors today.



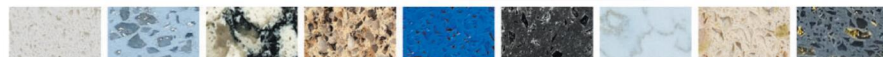
✓ NO NEED TO EMPTY CUPBOARDS ✓ NO MESS, NO FUSS ✓ FITTED IN A DAY OR TWO ✓ MADE TO MEASURE



Complete the look with a natural stone overlay from Quartzize

Why replace your worktops when this unique quartz overlay simply fits over your existing surface. Here are some of the amazing benefits:

- **Timeless** – Looks clean and modern.
- **Hygienic** – A perfectly smooth surface.
- **Easy care** – Wipe with a neutral cleaner.
- **Durable** – Tough and scratch resistant.
- **Easily Installed** – Fitted in less than a day.



*Subject to status. Terms and conditions apply.

Three easy steps to transform your kitchen:

- 1** We'll pop along and take some measurements...
- 2** Choose from our range of doors and worktops...
- 3** Our fitters will come back and transform your kitchen.



JOE'S DOORS & OVERLAYS

02476 101914 • 01926 800726 • 01788 422326
joesdoors.co.uk



**FREE SURVEY
 FREE DESIGN
 FREE QUOTE
 FULLY FITTED
 NATIONWIDE**

Lines Open: Mon - Fri: 8.30am - 8.00pm, Sat: 8.30am - 6.00pm, Sun: 9.00am - 5.00pm. Over 30 years experience. Family-run business.

Joining up to offer help

Big chance for smaller fundraisers

TWO staff networks from West Midlands Ambulance Service have come together to organise a donation of essential supplies for people in Jamaica after the devastating hurricane Melissa in October.

The ONE Network and the Women's Network have been working together since the hurricane struck at the end of October, to appeal to staff and volunteers at WMAS for donations to support affected communities in Jamaica.

Staff and volunteers from across the Trust responded to their appeal with generosity by donating essential hygiene and comfort items.

In just a few weeks, a total of 455 items, such as sanitary towels, nappies, baby milk, toothbrushes, toothpaste, body wash, deodorant, paracetamol, ibuprofen and plasters were received.

Last month, the donations were delivered by The ONE Network Co-chairs Keeling Hutton and Mohammed Azim to Beverley Johnson at JLB International Shipping. Beverley will be adding the donations to her company's 8th Humanitarian Relief Container ready for shipping to Food for the Poor (Jamaica) Charity.

Keeling Hutton said: "We would like to thank Beverley at JLB International Shipping for her continued humanitarian work and support in making this possible.

"On behalf of the ONE Network, I'd like to sincerely thank everyone who contributed. Your compassion, solidarity, and willingness to help will make a real difference."

Joanne Caines, the Women's Network Vice-chair



added: "It has been truly heartwarming to see just how many donations have come in – most especially as many of our colleagues have family and friends living in Jamaica who have been directly affected by Hurricane Melissa.

"I echo Keeling's words and wish to send a very big thank you for everyone who has supported this much needed cause."

Staff delivered the supplies. s

APPLICATIONS are now open for Small Charity Week, a fundraising campaign created by Big Give, Global's Make Some Noise, and NCVO.

Following the success of the inaugural 2025 campaign, Small Charity Week will expand in 2026, aiming to support more small charities than before.

The match funding pot will help participating charities maximise donations, providing unrestricted income at a time when many small organisations are facing rising costs, increasing demand for services, and an increasingly competitive fundraising environment.

The Small Charity Week 2026 match funding campaign will run from June 22 to June 29.

Thanks to match funding provided by a growing network of Champion funders, public donations made during the campaign will be doubled.

Players of People's Postcode Lottery will once again join the campaign as a headline champion, doubling donations throughout the week, with conversations ongoing with additional funders set to further expand the available match funding pot for participating charities.

Suzanne Ryder Richardson, Director of Global Goodness, CEO of Global's Make Some Noise, said: "Small Charity

Week shows the incredible impact that match funding and national visibility can have for small charities.

"Last year, so many organisations saw new supporters, increased donations, and greater confidence in digital fundraising.

"So many more charities need our support, and Small Charity Week offers a powerful opportunity to boost income and strengthen long-term sustainability.

"We're thrilled to continue partnering with Big Give, NCVO, players of People's Postcode Lottery and more generous funders to support them."

Kate Lee OBE, Chief Executive of NCVO, said: "Small charities play a vital role in our communities, and while they may be small, the impact of their work is anything but.

"We're delighted that the 2026 match funding campaign will benefit even more charities, including UK-based charities working internationally, recognising the important contribution many small organisations make overseas."

Applications for Small Charity Week 2026 are open now and will close at 5pm on February 11 2026.

Visit biggive.org/small-charity-week/ for more information.

Browse the Winter Edition of Seasons



As winter's chill begins to settle across our three counties, there's a certain kind of beauty that only this time of year brings.

This, then, feels like the perfect moment to launch 'Seasons' – our brand-new glossy magazine, created to celebrate the people, places, and stories that make Worcestershire, Warwickshire and the West Midlands such a wonderful part of the world

Pick up a copy locally for free, or simply browse on line www.seasons-magazine.com

Each quarter, Seasons will follow the rhythm of the year – from the crisp calm of winter to the first buds of spring, the brightness of summer and the richness of autumn – highlighting the very best of local life, from independent shops and community ventures to countryside walks, home inspiration, and hidden gems worth discovering.

Our first Winter edition is all about warmth – in every sense of the word. You'll find features that reflect the spirit of the season: comforting food, inspiring people, caring places, and ways to make the cold months glow with local charm.

This magazine is for you – our readers, neighbours and local businesses – and we can't wait to share the year ahead with you, one beautiful season at a time.



For even more details call 01926 317118 or 0121 270 2295
'Seasons' magazine is brought to you by your local 'Observer' Newspaper team



Free Private Antiques & Jewellery Valuations

We offer a **FREE**, no obligation, home valuation service, where one of our valuers can come to your home and value your items

This service is perfect for those who:

- **Have a lot of items they'd like valuing**
- **Would prefer a more private valuation of their items**
- **Have large items they can't get to one of our valuation events**
- **Can't get to one of our valuation events**

We can give valuations of Silver, Gold, Jewellery, Watches, Pictures, Furniture, Antiques, and Collectables

For more information and to arrange a visit, contact:

T: Hansons Warwickshire 07470 459309

E: clivejones@hansonsauctioneers.co.uk

www.hansonsauctioneers.co.uk



Hansons Auctioneers, Etwall, Derbyshire, DE65 6LS

Alcohol support is there for all

SUPPORT is available for anyone in Warwickshire struggling with alcohol addiction.

January is a time when many people cut back on drinking, but for those struggling with alcohol it also provides an opportunity to seek help.

Alcohol Change highlight there are an estimated 600,000 dependent drinkers in England alone, people who are in a relationship with alcohol that is bringing them and their families ill-health, conflict and pain. Four in five of them are receiving no treatment.

Drinking in excess can lead to serious health, social and financial consequences, and Warwickshire County Council wants residents to know that free, confidential support is available locally through Change Grow Live.

CGL, commissioned by WCC, offers a comprehensive range of services for adults and young people affected by alcohol misuse.

These include free and confidential assessments, structured treatment plans and psychosocial support, detox and rehabilitation pathways and specialist services for young people and families.

Anyone can access these services at hubs in Leamington and Rugby, or online. WCC also provides practical advice for reducing alcohol intake, such as pacing drinks, keeping a diary, and scheduling alcohol-free days. For those looking to start the conversation around reducing alcohol intake, the Alcohol Change UK Try Dry app is recommended for goal setting and tracking progress.

WCC's health spokesperson Coun Anne Marie Sonko said: "January offers reflection on all aspects of our lives, if this reflection is around alcohol intake, don't worry, you can get help if it is impacting on your health and wellbeing. We know that family and friends may be concerned too. Our commissioned service, Change Grow Live, offers free, practical, and confidential drug and alcohol advice alongside ongoing support."

Visit www.warwickshire.gov.uk/drugs for more information.

More are urged to take a healthier approach

RESIDENTS are being encouraged to explore a wide range of health prevention support available on Warwickshire County Council's Living Well webpages.

From healthy ageing to community support, this free online resource is designed to help individuals and families to live well and stay well.

Physical activity is key to maintaining good health, and the webpages provide vital guidance about staying fit. This includes recommended exercises to improve core strength and flexibility that is suitable for all ages. Whether just starting out or looking to stay active, residents can discover warm-up videos and light workouts, plus tips and locations for enjoyable walks across Warwickshire.

Maintaining mobility is essential for independence and confidence, and the Living Well webpages share guidance about how to choose supportive footwear, as well as using assistive technology like AskSARA to help prevent falls at home.

Healthy eating goes hand-in-hand with physical activity, and the Living Well webpages also offer practical advice about nutrition and age-appropriate eating habits. Residents can learn more about hydration

Let's get physical - Warwickshire County Council's Living Well webpages offer a wide range of health prevention support.



and how to incorporate more water into a diet, as well as how nutritional needs change with activity levels and age.

Social connections can also play a crucial role in wellbeing. Advice is available to help about how to stay in touch with friends and family using technology, join a local community or voluntary group, and build meaningful relationships. For those experiencing loneliness or social isolation, the webpages offer helpful articles

and resources to promote connections and improve mental health.

WCC health spokeswoman a Coun Anne-Marie Sonko said: "Prevention is at the heart of our approach to health and social care support in Warwickshire, and we want all residents to know that help is available.

"Whether you're looking to stay active, connect with others, or find financial or emotional support, the Living Well

webpages provide free advice and guidance to help everyone enjoy happier, healthier, and more independent lives. I encourage everyone to explore these webpages and see how the free advice and guidance available can benefit them."

Visit www.warwickshire.gov.uk/livingwell to discover the full range of support available.

For more tips on healthy ageing, visit www.warwickshire.gov.uk/healthy-ageing

just go holidays



By Coach from Coventry, Rugby

Reader Travel

The Observer



ABBA VOYAGE LIVE IN LONDON

Departing Sun 19 Apr '26

Have you always wanted to experience the magic of an ABBA concert? Well now is your chance to say Thank You for the Music! Join us at the ABBA Arena for the incredible ABBA Voyage; where the global pop icons appear on stage as digital avatars brought to life.

SO MUCH INCLUDED...

- ✓ Return coach travel from Rugby, Coventry
- ✓ Overnight stay at a selected hotel (JG3 or JG4 rating) with breakfast
- ✓ Ticket to ABBA Voyage at the ABBA Arena with coach transfers (dancefloor, standing)
- ✓ Free time in London for shopping & sightseeing

Upgrade to a seated ticket in Block F or K for £25pp or Block G or J for £45pp

▶ SAVE £20 - Quote OSG
- Book by 30 Jan 2026

2 Days by Coach only £249

Single Supplement £60



EASTBOURNE - THE SUNSHINE COAST & BLUEBELL RAILWAY

Departing Sun 19 Apr '26

Discover East Sussex from elegant Eastbourne, the UK's sunshine capital. Ride the nostalgic Bluebell Railway, explore Sheffield Park Gardens, enjoy time in Lewes and opt to visit the historic gems of Rye and Hastings. Coast, castles and cream teas await!

SO MUCH INCLUDED...

- ✓ Return coach travel from Rugby, Coventry
- ✓ 4 nights at the New Wilmington Hotel, Eastbourne (JG2+ rating) with dinner & breakfast
- ✓ Entertainment some evenings
- ✓ Heritage train journey on the Bluebell Railway
- ✓ Excursions to Lewes & Sheffield Park Gardens

Optional excursion to Rye & Hastings (£15pp)

▶ SAVE £40 - Quote OSG
- Book by 30 Jan 2026

5 Days by Coach only £399

Single Supplement £80



WICKED THE MUSICAL EVENING SHOW & LONDON

Departing Sat 16 May '26, Sat 17 Oct '26, Sat 14 Nov '26, Sat 21 Nov '26, Sat 5 Dec '26

Wicked is the sensational musical that hits stages like a twister with its electrifying score, stunning sets and a story that turns Oz on its head. Full of memorable songs such as No Good Deed and Defying Gravity, this is guaranteed to leave you spellbound!

SO MUCH INCLUDED...

- ✓ Return coach travel from Rugby, Coventry
- ✓ Overnight stay at a selected hotel outside London (JG3 or JG4 rating) with full English breakfast
- ✓ Stalls or Dress Circle ticket (evening performance)

▶ SAVE £20 - Quote OSG
- Book by 30 Jan 2026

2 Days by Coach only £189

Single Supplement £45

For more information, or to book, please call

03332 342 514 Quote OSG

or visit us online at

justgoholidays.com/OSG



033 numbers are free within inclusive minutes packages otherwise standard rates apply.

These packages are subject to Just Go! Holidays terms & conditions. Coach bookings are protected by Bonded Coach Holidays & the Association of Bonded Travel Organisers Trust Ltd. Air holidays are ATOL protected No. 30883. Prices are per person, based on two people sharing a room & no tourist on bookings made up to 7 days post publication, after which prices may fluctuate. Calls to OS numbers are free with inclusive minutes packages, else standard rates apply. Changes of date, hotel, airport or pick-up location may incur a supplement. Please see website or call for full details.



Chance to share views on funding of police

POLICE and Crime Commissioner for Warwickshire Philip Seccombe is inviting residents to share their views on how policing should be funded, following the Government's publication of its provisional police funding settlement.

Mr Seccombe said the Government's announcement included only basic headline figures and provided little detail about how individual grants would be allocated.

He added this made financial planning difficult, though the figures indicated a modest increase for Warwickshire. Under the Government's approach, around two thirds of the overall budget increase is expected to come from local taxpayers, with the remainder provided through national funding.

This he said presupposed all PCCs would apply the maximum increase to the police element of Council Tax. This has been set at £15 for an average Band D household by the Government, with those in higher bands paying proportionately more and those in lower bands paying less.

Without this full increase, Mr Seccombe said the ability to deliver and sustain improvements to Warwickshire Police would be significantly reduced.

And he added not taking the maximum rise would also have



Police and Crime Commissioner Philip Seccombe is inviting residents to share their views on how Warwickshire Police should be funded.

a compounding effect in future years, reducing financial resilience and placing greater pressure on stretched budgets.

Mr Seccombe said the proposed budget would include aiming to improve response times, strengthen investigations and criminal justice outcomes, and maintain improvements in call handling and visible patrols.

Other improvements the budget will look to support include expanding incident response capacity and matching resources to demand, protecting neighbourhood policing teams and visible patrols, improving specialist

investigations and replacing the crime and investigation management system, investing in training facilities, vehicles, modern equipment and essential digital tools, keeping buildings, equipment and IT reliable and secure and delivering more than £2million in efficiency savings to protect frontline policing.

Mr Seccombe said: "I recognise the pressures on household budgets and would always prefer to see a greater share of policing funded nationally. In the absence of this, I have little choice but to ask local taxpayers to contribute more so that the Chief Constable

has the resources needed to keep Warwickshire safe.

"My role is to set a balanced and responsible budget and, while we await further detail from Government which could change the picture, it is likely that I will need to propose the maximum precept increase. I am keen to hear residents' views before finalising these plans."

The budget for 2026/27 will be presented to the Warwickshire Police and Crime Panel on February 2.

Visit <https://forms.office.com/e/vvDYS61NZs> to complete the online survey.

PCC: More to be done on safety

THERE is still further to go when it comes to road safety measures, says Warwickshire's police and crime commissioner.

Philip Seccombe has welcomed the Government's long-awaited Road Safety Strategy, but believes more could have been included, notably stronger measures to protect young drivers and save lives by introducing Progressive Driving Licences.

The strategy sets out plans to tackle the devastating impact of collisions on UK roads by focusing on people, vehicles, roads, and enforcement.

Headline proposals within the strategy include new powers to suspend driving licences for those suspected of drink or drug driving offences, consultation on mandatory eye tests for drivers over the age of 70, lowering the drink drive limit, particularly for younger drivers, and consultation on introducing a three or six month minimum learning period for learner drivers.

But Mr Seccombe feels that the strategy should go further if it hopes to meet the Government's own aim of reducing the number of deaths and serious injuries on the country's roads by 65 per cent by 2035.

He said: "I am pleased to see that this Government has finally published its strategy and provided the public with a commitment to reducing deaths and serious injuries on our roads.

"However, I believe that the Government can, and must, go further to protect some of the most vulnerable people on our roads - young and newly qualified drivers. I know the lack of commitment to implementing Progressive Driving Licences for young drivers will come as a significant disappointment to the bereaved families who have long been campaigning for such measures to come into place and protect future young drivers."

Questions about care? We can help

We know moving into residential care is an emotional and difficult decision with lots to think about.

With over 30 years' experience, we can help you navigate the process of finding the right care home, so that you feel confident about the decision you make – whether that's choosing a WCS Care home, or one outside our group that's more suited to your needs.

If you've got questions about care, or one of our care homes, our Trusted Advisors can help.



Philip Rainsford



Drovers House, Rugby
 ☎ 07802 728447
 ✉ p.rainsford@wcs-care.co.uk



Josephine Rugg

Westlands, Rugby
Dewar Close, Rugby
 ☎ 07802 728443
 ✉ j.rugg@wcs-care.co.uk

Advice to make sure you are staying warm

AS THE cold weather continues hot water bottle users are being warned of the dangers of serious burns and scalds.

The Royal Society for the Prevention of Accident (RoSPA) has issued advice on how to stay safe and warm.

Data from the Children's Burns Trust showed that burn injuries from hot water bottles rose 11 per cent in 2024 compared to 2023, with nearly 1,000 cases in 2024 - the highest annual total in more than 20 years.

Injuries have doubled since 2019, showing a sustained five-year increase.

Adrian Simpson, RoSPA's head of policy and chair of the Hot Water Bottles and Microwaveable Personal Warmers Committee, said: "These items can still pose risks - especially older ones - so we urge the public to follow simple safety steps to stay warm without injury.

"We will also consider this issue in future engagement with policymakers and standards bodies."

RoSPA has offered advice to people when using hot water bottles.

To start with, people should identify the age of the hot water bottle as most have a date wheel - a small circular mark that resembles a daisy - usually stamped near the neck. This indicates the month and year of manufacture.

As hot water bottles age, the materials can degrade, increasing the risk of splitting or leaking, so it is important to check and replace older bottles regularly.

People should also check for damage before each use - inspect hot water bottle



or warmer for cracks, splits or signs of wear. If in doubt, replace it.

Follow the manufacturer's instructions - Always read and follow the safety instructions provided with the product.

Don't overfill hot water bottles. They should only be filled to a maximum of two-thirds capacity using hot (not boiling) water to reduce the risk of bursting.

Use a cover - always use a fabric cover or wrap the bottle in a towel to prevent direct contact with skin.

Avoid sitting or lying on them as pressure can cause the bottle to burst or leak.

When using microwaveable warmers, only heat for the recommended time and never reheat before the item has fully cooled.

Make resolutions that count in 2026

WITH 2026 now in full swing, Severn Trent is encouraging customers to make resolutions that will not just make life better for customers but also keep pipes flowing freely.

The water company is providing helpful tips which can help this resolution stick. By changing a few everyday habits, people can protect the home from costly blockages and help save water too.

Here are the top tips for resolutions that really count -

1. 'Remember the 3Ps' - Only flush pee, poo and (toilet) paper - nothing else. Wipes, cotton buds, and sanitary products belong in the bin.
2. 'Be a binner, not a blocker' - Scrape leftover fats and oils into a container and pop them in the bin - not down the sink. Use kitchen roll to soak up grease from pans before washing up.
3. Bin the Wipes - Even 'flushable' wipes do not break down like toilet paper. Keep a bathroom bin handy and toss them there instead.
4. Make Water-Saving Resolutions - Turn off the tap while brushing your teeth - it can save up to six litres a minute
5. Fix dripping taps - One drip per second can waste more than 5,000 litres a year.

Grant Mitchell, blockages lead at Severn Trent, said: "The new year is the perfect time to refresh and rethink some habits.

"Simple changes like scraping leftover grease into the bin, collecting cooking oils in a container, and binning wipes instead of flushing them can make a huge difference.

"And, while you're at it, why not add a water-saving resolution too?"

"Turning off the tap while brushing your teeth or fixing that dripping tap can save litres every day.

"These small steps help protect your home and the environment, so let's make 2026 the year of good habits."

LOOKING FOR A GOOD WOMAN TO MARRY

BETWEEN AGE OF 40 to 87

Seeking nice woman between 40 to 87 with view to marriage. Only sincere persons.

Please email me: peterdavis1996firm@engineer.com

Special Family Announcements



Births, Engagements, Weddings, Anniversaries, Happy Birthdays, Congratulations or sadly Deaths and In Memory Announcements can all be placed in your **Observer** to appear in printed newspaper weekly, and online247

You can call us on **01527 588688** or email details to us (including photograph if desired) with your telephone contact details and we will call you back to confirm cost reception@bullivantmedia.com

Prices start from just **£15** (inc Vat)

GODIVA CARPETS ARE OFFERING UNBELIEVABLE SAVINGS

BEST EVER SALE IS NOW ON!

**THESE SAVINGS ARE JUST TOO GOOD TO MISS!!
SAVE £££'s and £££'s and £££'s
EXTRA 10% OFF ALL STOCK • OVER 300 ROLLS IN STOCK**

Fantastic and huge range of beautiful Carpets and Flooring to choose from, and at prices to suit every budget
OUR NORMAL OPENING HOURS ARE 9AM TO 5.30PM MONDAY TO SATURDAY (CLOSED ON SUNDAYS)

Godiva Carpets, a local family business, have been carpeting the homes and businesses in Coventry since 1953

02476 551200

GODIVA CARPETS LTD
Argyle House,
Collingwood Road, Earlsdon,
Coventry CV5 6HW

Visit our online store **WWW.GODIVACARPETS.CO.UK**



FAUX

ZOFFANY

ABINGDON

INVICTUS

ulster™
www.ulstercarpets.com

STAINFREE®
The original and the most popular ever Easy-clean carpet!

WILTON ROYAL

OPENING TIMES: 9AM - 5.30 PM MONDAY TO SATURDAY. CLOSED ON SUNDAYS.

GODIVA CARPETS

A family business trading since 1953

CLOSED SUNDAYS

SUDOKU

Complete the grid so that every row, every column and every 3 x 3 box contains every digit from 1 to 9.

EASY

	2			1				3
3		5	2					1
		1			8		2	5
	9	8			7			4
4	1			6				7
	5		4		9	1	6	
1	4		9			2		
	8	7			6	3	4	9
5			8					

HARD

9				5				4
	8			6				2
		1				7		
		5	4		7	9		
8								7
		9	3		2	1		
		6				4		
	7			4			1	
2				3				6

PATHFINDER

Beginning with the top highlighted letter, follow a continuous path of words associated with the given subject. The trail goes through each letter once, twisting up, down and sideways, but never diagonally.

Pink singles

W E W V E J T L T U D G I R L
 H N T O L U S I S P I T U R S
 O K R U E L L K E E G H A T T
 A P E N U F I E M T E O B E H
 R T H H O U P A E T M U T O O
 S Y T T E S N T L O L T Z F D
 T T E D G E O D E V E D A A M
 A R A L A R L A D I M N Y L I
 R A D Y M M A T S S S U P A I
 E E M I G T S G O M D O O R T
 A S E V G O U I R E T O R T P
 N O R E U G J S L M I G L E L
 T H E Y O O D O U B L E E A S
 A E O N J D I R M E E F T N E
 D D T M I A S T E V A E L O D

Solutions opposite

CROSSWORD

	1		2		3		4		5		6	
7												
8									9			
10					11		12				13	
14			15				16		17			
18	19				20		21					
22												

ACROSS

- 7. League (13)
- 8. Awkward (8)
- 9. Merit (4)
- 10. Fight (6)
- 12. Pester (6)
- 14. Partial (6)
- 16. Exultant (6)
- 18. Insensitive (4)
- 20. Point out (8)
- 22. Sin (13)

DOWN

- 1. Large hill (8)
- 2. Exertion (6)
- 3. Thought (4)
- 4. Believable (8)
- 5. Wait on (6)
- 6. Needy (4)
- 11. Wages (8)
- 13. Building (8)
- 15. Fervent (6)
- 17. Charge (6)
- 19. Crooked (4)
- 21. Expires (4)

Scribble pad

LADDER

Using the clues provided, fill in each step of the ladder with a new word, changing one letter at a time.

- Melody
- Prong
- Alcohol
- Learned
- Desire



NINER

Each number from 1 to 9 represents a different letter. Solve the clues and insert the letters in the appropriate squares to discover a word which uses all nine letters.

- 3429** gives an animal;
- 58763** gives another animal;
- 1634589** gives a bird.

1	2	3	4	5	6	7	8	9
---	---	---	---	---	---	---	---	---

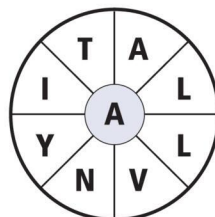
CODEWORD

This puzzle has no clues. Instead, every number printed in the grid represents a letter, with the same number always representing the same letter. For example, if 8 turns out to be a V, you can write in V wherever a square contains 8. Using your knowledge of words, complete the puzzle.

		26		2		6			11		6			
A														
B	16	8	13	21		15	13	25	20	22	2			17
C						I	N							
D		10			14	11	13			13		24	15	22
E														
F		7				2		26	20	24	5		5	20
G														
H	1	9	2	16	17			13						13
I														
J		11				18	4	2	15	24	11	13	14	2
K														
L		13				24		12		5				18
M														
N	3	11	22	10	9	18	20	24	2					16
O														
P	15							11		17	24	11	16	10
Q														
R	19		24			20	26	16	8		17			15
S														
T	2	11	5			17			18	23	2			2
U														
V	24			11	19	18	1	11	16		14	20	22	2
W														
X														
Y														
Z	1	2	3	4	5	6	7	8	9	10	11	12	13	N
	14	15	16	17	18	19	20	21	22	23	24	25	26	
		I												

WORDWHEEL

You have 10 mins to find as many words as possible using the letters in the wheel. Each must use the hub letter and at least 3 others. Letters may be used only once. You cannot use plurals, foreign words or proper nouns. There is at least one 9-letter word to be found.

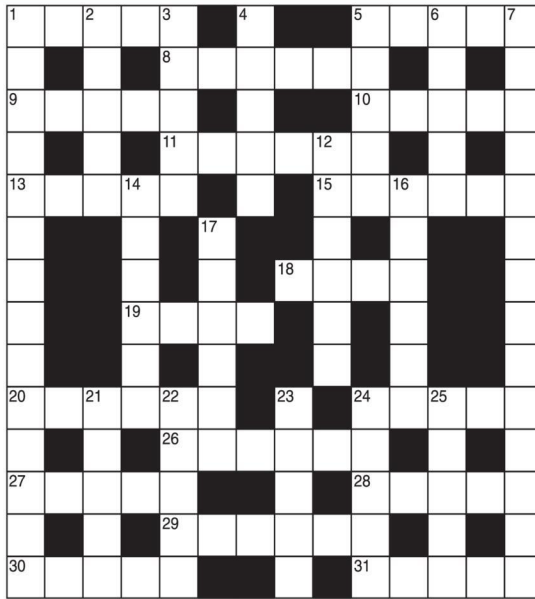


How you rate
 15 words: average 25 words: very good
 20 words: good 30 or more: excellent.

GENERAL KNOWLEDGE CROSSWORD

ACROSS

- See 31
- Bone of the middle ear (5)
- Swedish chemist, etc., inventor of dynamite and other explosives (6,5)
- Tropical Asiatic palm, bearing a pungent, astringent fruit (5)
- Fibrous pod of a plant, used as a sponge (6)
- Surname of a titled engineer, designer of cars, aircraft engines, etc. (5)
- Agent of a foreign government appointed to take care of its nationals and commerce (6)
- A dam across a river (4)
- Goddess of youth and spring, daughter of Zeus and Hera (4)
- Small, South American rodent related to the guinea pig (6)
- Slow-moving, shell-bearing mollusc (5)
- Fine plaster for coating walls, etc. (6)
- Southern African quadruped with striped coat (5)
- The cry of a cat (5)
- Radioactive, metallic element discovered in 1898 by the Curies (6)
- Term for the outer two layers of skin (5)
- The scene of Hardy's *The Return of the Native* (5,5)



DOWN

- French novelist well known for his series of romances *La Comédie Humaine* (6,2,6)
- The --- Theatre is a famous playhouse in Dublin (5)
- German town on the river Saale which was the birthplace of the composer Handel (5)
- Robert Burns's "sweet" river (5)
- A north-western state of the U.S.A., capital Boise (5)
- Game of great antiquity, played by 2 players on a board of 64 squares (5)
- 1st Earl of Bewdley, P.M. 1923-4, 1924-9 and 1935-7 (7,7)
- Prominence given to one syllable of a word (6)
- Lozenge eaten to sweeten the breath (6)
- 21 and 17. Former chairman of the Conservative Party and MP for Chingford (6,6)
- Another name for the eye socket (5)
- The emperors of Russia, until 1917 (5)
- Open fabric used in bookbinding, upholstery, etc. (5)
- River of Picardy in northern France, rising near St. Quentin (5)
- Final decision, especially of arbitrators (5)

SOLUTIONS

General Knowledge Crossword
 ACROSS: 1 Heath; 5 Incus; 8 Alfred; 9 Nobel; 10 Area; 11 Looftah; 13 Royce; 15 Consul; 18 Weir; 19 Hebe; 20 Agouti; 24 Snail; 26 Succo; 27 Zebra; 28 Miaow; 29 Radium; 30 Cuts; 31 Egdon. DOWN: 1 Honoré de Balzac; 2 Abbey; 3 Halle; 4 Afton; 5 Idaho; 6 Chess; 7 Stanley Baldwin; 12 Accent; 14 Cadrou; 16 Norman; 17 Tebbit; 21 Orbit; 22 Tsars; 23 Scrim; 24 Somme; 25 Award.

Crossword
 ACROSS: 7 Confederation; 8 Untoward; 9 Earn; 10 Battle; 12 Badger; 14 Unfar; 16 Elated; 18 Hard; 20 Indicate; 22 Transgression. DOWN: 1 Mountain; 2 Effort; 3 Idea; 4 Credible; 5 Attend; 6 Poor; 11 Earnings; 13 Erection; 15 Ardent; 17 Accuse; 19 Awry; 21 Dies.

Wordwheel Pathfinder
 Who Knew, True Love, Just Like a Pill, Funhouse, Get the Party Started, Lady Marmalade, Don't Let Me Get Me, Stupid Girls, The Truth About Love, Missundaztood, Family Portrait, Please Don't Leave Me, Trouble, Feel Good Time, Most Girls, Just Give Me a Reason, There You Go God is a DJ, I'm Not Dead.

Ladder
 Tuna, Tune, Time, Wine, Wise, Wish, Fish
 1=W, 2=E, 3=F, 4=B, 5=T, 6=Z, 7=K, 8=Y, 9=H, 10=M, 11=A, 12=Q, 13=N, 14=C, 15=L, 16=L, 17=P, 18=O, 19=Y, 20=U, 21=X, 22=R, 23=D, 24=S, 25=J, 26=G

9	3	2	7	5	1	6	8	4
5	8	7	9	6	4	3	2	1
5	8	7	9	6	4	3	2	1
4	6	1	8	2	3	7	5	9
6	2	5	4	1	7	9	3	8
8	1	3	5	9	6	2	4	7
7	4	9	3	8	2	1	6	5
1	5	6	2	7	8	4	9	3
3	7	8	6	4	9	5	1	2
2	9	4	1	3	5	8	7	6



It's time to Like, Follow & Subscribe
Don't be LEFT BEHIND.....

BREAKING NEWS
WHAT'S ON
SPORT
INTERVIEWS

- CoventryObserver
- LeamingtonObserver
- RugbyObserver
- @CovObserverNews
- @LeamObs
- @RugbyObserver
- CovObserver
- Leamington.Observer
- Rugby.Observer

Classified

TELEPHONE 01527 588688 FACSIMILE 01527 584371

PUBLIC NOTICES

PUBLIC NOTICES



Public Notice Council Tax Premium Changes Rugby Borough Council

NOTICE IS HEREBY GIVEN under Section 11B and Section 11C of the Local Government Finance Act 1992 (as amended by the Levelling-up and Regeneration Act 2023) that **Rugby Borough Council** has resolved to amend the additional Council Tax charges (premiums) for Long-Term Empty Dwellings and Second Homes within its area.

The purpose of these measures is to encourage owners to bring empty properties back into use and increase the availability of housing for local residents.

1. Long-Term Empty Dwellings Premium - Effective 1 April 2026

The definition of a Long-Term Empty Dwelling is a property that is both unoccupied and substantially unfurnished.

From 1 April 2026, the period after which an additional Council Tax premium applies for an empty dwelling will be reduced from two years to one year.

The revised premium charges for Long-Term Empty Dwellings will be as follows (charged as a percentage in addition to the standard Council Tax bill):

Duration Unoccupied & Unfurnished	Current Premium (Pre-Apr 2026)	Revised Premium from 1 April 2026	Total Council Tax Bill
Over 1 year (and up to 5 years)	100% (Previously over 2 years)	100% Premium	200% (2x standard charge)
Over 5 years (and up to 10 years)	100%	100% Premium	300% (3x standard charge)
Over 10 years	100%	100% Premium	400% (4x standard charge)

2. Second Homes Premium - Effective 1 April 2027

The definition of a Second Home (or 'Dwellings occupied periodically') is a property that is substantially furnished but is not the owner's sole or main residence.

In line with the Levelling-up and Regeneration Act 2023, the Council is reducing the threshold for applying the Second Home Premium from 2 years to the minimum permissible period of 1 year, effective from 1 April 2027.

Duration as a second home	Current Premium (Pre-Apr 2027)	Revised Premium from 1 April 2027	Total Council Tax Bill
1 year or more	100%	100% Premium	200% (2x standard charge)

Mandatory Exceptions

Certain classes of properties are legally exempt from the Council Tax Premiums, and these mandatory exceptions will continue to apply. These typically include properties:

- Dwellings that are actively being marketed for sale or let;
- Dwellings undergoing major structural repair/renovation;
- Dwellings where occupation is prohibited (such as planning restriction).

Owners who believe their property qualifies for an exception should contact the Council's Council Tax department immediately.

Contact and Further Information

For further information regarding these changes, mandatory exceptions, and how they may affect your Council Tax liability, please visit:

Rugby.gov.uk

Or contact the Council Tax team at: 01788 533533

Issued by: Chief Officer for Finance and Performance of Rugby Borough Council

Date of Publication: 18/12/2025

PUBLIC NOTICES

Goods Vehicle Operator's Licence

Network Transport Solutions Limited of 10, Basset Court, Loake Close, Grange Park, Northampton NN4 5EZ, is applying to change an existing licence as follows: To add an operating centre to keep 15 goods vehicles and 0 trailers at Tesco Daventry Clothing Distribution, Saxon Drive, Kilsby, Northampton, NN6 7BZ.

Owners or occupiers of land (including buildings) near the operating centres who believe that their use or enjoyment of that land would be affected, should make written representations to the Traffic Commissioner at Quarry House, Quarry Hill, Leeds, LS2 7UE stating their reasons, within 21 days of this notice. Representors must at the same time send a copy of their representations to the applicant at the address given at the top of this notice. A Guide to Making Representations is available at: www.gov.uk/government/publications/a-guide-to-making-representations-objections-and-complaints-goods-vehicle-operator-licensing.

PUBLIC NOTICES

KEITH ROBERT STAFFORD (Deceased)

Pursuant to the Trustee Act 1925 any persons having a claim against or an interest in the Estate of the above named, late of Beaumont Hall Care Home, Leys Lane, Leamster LE4 2BD and formally of 67 Garth Crescent, Binley Coventry, CV3 2PP, who died on 20/06/2024, are required to send written particulars thereof to the undersigned on or before 17/03/2026, after which date the Estate will be distributed having regard only to the claims and interests of which they have had notice.

Band Hatton Buttolter Solicitors, Earlsdon Park, 53-55 Butts Road, Coventry, CV1 3BH

PUBLIC NOTICES

Warwickshire County Council

ROAD TRAFFIC REGULATION ACT 1984

Warwickshire County Council has made the following Temporary Traffic Orders:

NORTH STREET, RUGBY

Order Effect: Road closed to vehicular traffic. Temporary one-way traffic flow north bound North Street and road closed to traffic South bound North Street.

Reason for Order: To safely enable excavation of carriageway to connect gas mains.

Order Commences: 19 January 2026 for up to 18 months.

Anticipated Completion: 23 January 2026.

Access & Diversion: Evreux Way, Corporation Street, Warwick Street, Footpath at Warwick Street Subway, Lawrence Sheriff Street, Hillmorton Road, Whitehall Road, Clifton Road, Church Street, North Street and vice versa.

Contractor: CADENT GAS, Tel: 07831 7065 12.

D2154 CORONATION ROAD, CHURCH LAWFORE

Order Effect: Road closed to vehicular traffic from A428 Coventry Road to Ling Lane.

Reason for Order: Carriageway patching and associated works, 08.00hrs - 16.00hrs.

Order Commences: 17 January 2026 for up to 18 months.

Anticipated Completion: 17 January 2026.

Access & Diversion: A428 Coventry Road, Limestone Hall Lane, Ling Lane and vice versa.

Contractor: Balfour Beatty, Tel: 03452 415 302.

D3492 CHURCH WALK, RUGBY

Order Effect: Road closed in its entirety from its junction with Bilton Road.

Reason for Order: Carriageway patching works, closed 08.00hrs - 16.00 hrs.

Order Commences: 21 January 2026 for up to 18 months.

Anticipated Completion: 21 January 2026.

Access & Diversion: No suitable diversion. Vehicular access & egress will be maintained where possible and safe to do so for businesses and residents only. Access/egress to/from Gable Close and Pool Close may also be restricted whilst works are in progress.

Contractor: Balfour Beatty, Tel: 03452 415 302.

C80 BROWNSOVER ROAD, D3120 VALLEY ROAD & D3058 OLD LEICESTER ROAD, RUGBY

Order Effect: Roads closed to vehicular traffic as follows: Brownsover Road - roundabout closed at Old Leicester Road/Valley Drive to entrance to EVRI Depot. Valley Road - closed from Brownsover Road roundabout to Prospect Park. Old Leicester Road - closed from Brownsover Road roundabout to Swift Park.

Reason for Order: Carriageway resurfacing and associated works phased works weekday nights only, 20.00hrs - 06.00hrs.

Order Commences: 19 January 2026 for up to 18 months.

Anticipated Completion: 27 January 2026.

Access & Diversion: Vehicular access & egress will be maintained for HGV's accessing/egressing Cosford Lane and Valley Drive including EVRI Depot via A426 (No access/egress via B4112 due to 7.5t weight restricted bridge on Brownsover Road).

Access/egress to/from Old Leicester Road will be via the A426, Consul Road and Gable Farm Road only whilst works are in progress. All other traffic to use signed diversions using the B4112 Newbold Road, A4071 and A426.

Contractor: Balfour Beatty, Tel: 03452 415 302.

TEESWATER CLOSE, LONG LAWFORE

Order Effect: Road closed to vehicular traffic.

Reason for Order: To enable repair/replacement of defective manhole frame and covers.

Order Commences: 21 January 2026 for up to 18 months.

Anticipated Completion: 21 January 2026.

Access & Diversion: No alternative route available.

Contractor: CSP, Tel: 07918 298 599.

WELLS STREET, RUGBY

Order Effect: Road closed to vehicular traffic.

Reason for Order: Works to repair/replace defective manhole frame and covers, closed 09.30hrs - 15.30 hrs.

Order Commences: 21 January 2026 for up to 18 months

Anticipated Completion: 21 January 2026

Access & Diversion: Grosvenor Road, Clifton Road, Whitehall Road, Murray Road and vice versa.

Contractor: Customer Solutions Plus, Tel: 07918 298 599.

CORD LANE, EASENHALL

Order Effect: Road closed to vehicular traffic.

Reason for Order: Works for meter and chamber rebuild.

Order Commences: 19 January 2026 for up to 18 months.

Anticipated Completion: 20 January 2026.

Access & Diversion: Rugby Road, Paliton Road, Easenhall Road and vice versa.

Contractor: Chevron Traffic Management Ltd, Tel: 0330 008 0820.

THE LOCKS, RUGBY

Order Effect: Road closed to vehicular traffic.

Reason for Order: Works for joint holes in footway and trenching in road for cable overlay.

Order Commences: 23 January 2026 for up to 18 months.

Anticipated Completion: 30 January 2026.

Access & Diversion: No diversion available.

Contractor: Network Plus, Tel: 08081 642 252.

RYDAL CLOSE, BROWNSOVER, RUGBY

Order Effect: Road closed to vehicular traffic.

Reason for Order: Works to lay duct in carriageway.

Order Commences: 21 January 2026 for up to 18 months.

Anticipated Completion: 23 January 2026.

Access & Diversion: No diversion available.

Contractor: M J Quinn, Tel: 01543 547 118

Warwickshire County Council proposes to make the following Temporary Traffic Orders:

CORD LANE, EASENHALL

Order Effect: Road closed to vehicular traffic.

Reason for Order: To safely enable duct laying work.

Order Commences: 6 February 2026 for up to 18 months.

Anticipated Completion: 11 February 2026.

Access & Diversion: Rugby Road, Easenhall Road, Paliton Road, Cord Lane and vice versa.

Contractor: Callan Connect, Tel: 01213 275 167.

C213 RUGBY ROAD, CLIFTON UPON DUNSMORE

Order Effect: Road closed to vehicular traffic from Station Road to Butlers Leap.

Reason for Order: Carriageway patching and associated works, 09.30hrs - 15.30hrs.

Order Commences: 2 February 2026 for up to 18 months.

Anticipated Completion: 2 February 2026.

Access & Diversion: Houlton Way, Hillmorton Lane, Lilbourne Road, Main Street.

Contractor: Balfour Beatty, Tel: 03452 415 302.

MURRAY ROAD, RUGBY

Order Effect: Road closed to vehicular traffic.

Reason for Order: For repair/replacement of defective manhole covers and frame.

Order Commences: 6 February 2026 for up to 18 months.

Anticipated Completion: 6 February 2026.

Access & Diversion: Wells Street, Claremont Road, Tom Brown Street and vice versa.

Contractor: CSP, Tel: 07918 389 363.

PUBLIC FOOTPATH FROM HAWLANDS TO GRASMERE CLOSE, RUGBY

Order Effect: Footpath closed to all traffic.

Reason for Order: Works to renew approx 220m of water mains in footpath and verge.

Order Commences: 2 February 2026 for up to 6 months.

Anticipated Completion: 8 March 2026.

Access & Diversion: Hawlands, Grasmere Close, Footpath from Hawlands to Grasmere Close and vice versa.

Contractor: Severn Trent Water, Tel: 08007 834 444.

For all of the above temporary orders, pedestrian access to and egress from properties and land situated adjacent to the length of road to be closed will be maintained where possible.

To report any problems with these works or for further details of our current & planned roadworks visit our website warwickshire.gov.uk/roadworksmap or call us 01926 412515.

S Duxbury, Director of Strategy, Planning & Governance, Shire Hall, Warwick CV34 4RL Date 15 Jan 2026

PUBLIC NOTICES

Warwickshire County Council

ROAD TRAFFIC REGULATION ACT 1984

Warwickshire County Council has made the following Temporary Traffic Orders:

BLACK HALL LANE, FILLONGLEY

Order Effect: Road closed to vehicular traffic from Tamworth Road to Mill Lane.

Reason for Order: To safely enable building repair works.

Order Commences: 19 January 2026 for up to 18 months.

Anticipated Completion: 6 April 2026.

Access & Diversion: B4098 Tamworth Road, Mill Lane, Black Hall Lane and vice versa.

Contractor: Fillongley Restorations Ltd, Tel: 07865 027 442.

D512 NEWHALL GREEN LANE, FILLONGLEY

Order Effect: Road closed to vehicular traffic from B4102 Meriden Road to Green End Lane

Reason for Order: Carriageway patching and associated works, 08.00hrs - 16.00hrs.

Order Commences: 17 January 2026 for up to 18 months.

Anticipated Completion: 17 January 2026.

Access & Diversion: Newhall Green Lane, Green End Road, B4102 Meriden Road and vice versa.

Contractor: Balfour Beatty, Tel: 03452 415 302.

HALL ROAD, WOLVEY

Order Effect: Road closed to vehicular traffic.

Reason for Order: Works to replace existing pole.

Order Commences: 22 January 2026 for up to 18 months.

Anticipated Completion: 22 January 2026.

Access & Diversion: Hall Road, Church Hill, Bulkington Road and vice versa.

Contractor: Quantum Traffic Management, Tel: 01724 786 286.

STONELEIGH ROAD, BUBBENHALL

Order Effect: Road closed to vehicular traffic.

Reason for Order: Works to install boundary box and meter.

Order Commences: 22 January 2026 for up to 18 months.

Anticipated Completion: 23 January 2026.

Access & Diversion: Stoneleigh Road, Main Street, Spring Hill, Rytton Road, Leamington Road, Watery Lane, Bubbenthal Road and vice versa.

Contractor: Chevron Traffic Management Ltd, Tel: 03300 080 820.

Warwickshire County Council proposes to make the following Temporary Traffic Orders:

QUSTERNE LANE, FILLONGLEY

Order Effect: Road closed to vehicular traffic.

Reason for Order: To safely enable the repairs and replacement of a defective manhole frame and cover at the Coventry Road junction.

Order Commences: 1 February 2026 for up to 18 months.

Anticipated Completion: 1 February 2026.

Access & Diversion: Meriden Road & Coventry Road.

Contractor: CSP Tel: 07918 389 363.

For all of the above temporary orders, pedestrian access to and egress from properties and land situated adjacent to the length of road to be closed will be maintained at all times. Vehicular access will be maintained where possible.

To report any problems with these works or for further details of our current & planned roadworks visit our website warwickshire.gov.uk/roadworksmap or call us 01926 412515.

S Duxbury, Director of Strategy, Planning & Governance, Shire Hall, Warwick CV34 4RL Date 15 Jan 2026

PUBLIC NOTICES

ANDREA JEAN LOWRIE FINCH (Deceased)

Pursuant to the Trustee Act 1925 any persons having a claim against or an interest in the Estate of the above named, late of 18 Chesterton Road, Coventry, CV6 2LB, who died on 22/12/2025, are required to send written particulars thereof to the undersigned on or before 17/03/2026, after which date the Estate will be distributed having regard only to the claims and interests of which they have had notice.

Band Hatton Buttolter Solicitors, Earlsdon Park, 53-55 Butts Road, Coventry, CV1 3BH

PUBLIC NOTICES

THOMAS ENDA NAUGHTON (Deceased)

Pursuant to the Trustee Act 1925 any persons having a claim against or an interest in the Estate of the above named, late of 51 Harefield Road, Coventry West Midlands, CV2 4EX, who died on 11/10/2025, are required to send written particulars thereof to the undersigned on or before 17/03/2026, after which date the Estate will be distributed having regard only to the claims and interests of which they have had notice.

Band Hatton Buttolter Solicitors, Earlsdon Park, 53-55 Butts Road, Coventry, CV1 3BH

PUBLIC NOTICES

GLORIA STAFFORD (Deceased)

Pursuant to the Trustee Act 1925 any persons having a claim against or an interest in the Estate of the above named, late of 67 Garth Crescent, Binley Coventry, CV3 2PP, who died on 31/07/2022, are required to send written particulars thereof to the undersigned on or before 17/03/2026, after which date the Estate will be distributed having regard only to the claims and interests of which they have had notice.

Band Hatton Buttolter Solicitors, Earlsdon Park, 53-55 Butts Road, Coventry, CV1 3BH

PUBLIC NOTICES

Classified

TELEPHONE 01527 588688 FACSIMILE 01527 584371

PUBLIC NOTICES

Rugby Borough Council
Town and Country Planning
Act 1990 (as amended)

RUGBY

Application Number R25/1028
14 CHURCH STREET, RUGBY, CV21 3PL
Decommissioning works including the removal of modern applied signage, fascia panels, projecting signs, and all associated branded elements fixed to the building facade.
This development may affect a Listed Building. This development may affect a Conservation Area.
Members of the public may inspect copies of the application, the plans and documents submitted with it online at:
www.planningportal.rugby.gov.uk or in an electronic form at: Town Hall, Evreux Way, Rugby, CV21 2BR between the hours of 9.00 am and 5.00 pm Monday to Friday until 06 February 2026. Please note a planning officer would not be present. If you wish to make an appointment to discuss the application, please contact the case officer.
Any person who wishes to make representation to the above mentioned Council about the applications should make them online – www.planningportal.rugby.gov.uk (search for application number and select comment) – or in writing by that date to Chief Officer – Growth and Investment, Town Hall, Rugby, CV21 2RR. If an application is determined by the Planning Committee, members of the public may have the opportunity to speak at the meeting. More details about public speaking are available from the Council or on-line at:
www.rugby.gov.uk/speakingatplanning
For household or minor commercial applications, in the event of an appeal against a refusal of planning permission, dealt with on the basis of representations in writing, any representations made will be sent to the Secretary of State, and there will be no further opportunity to comment at the appeal stage.
Nicola Smith
Chief Officer – Growth and Investment
MRPTI

Warwickshire County Council

ROAD TRAFFIC REGULATION ACT 1984
Warwickshire County Council has made the following Temporary Traffic Orders:
D0036 LADBROKE ROAD, BISHOPS ITCHINGTON
Order Effect: Road closed between Harbury Road, Ladbroke and Old Road.
Reason for Order: Carriageway patching works, closed 08.00hrs - 17.00 hrs.
Order Commences: 21 January 2026 for up to 18 months.
Anticipated Completion: 21 January 2026.
Access & Diversion: Harbury Road, B4451 Kineton Road, A425, B4452 Upton Road, Deppers Bridge Road, B4451 Station Road, Fisher Road, Ladbroke Road and vice versa.
Vehicular access & egress will be maintained where possible and safe to do so for businesses and residents only.
Contractor: Balfour Beatty, Tel: 03452 415 302.
SITWELL AVENUE, LONG ITCHINGTON
Order Effect: Road closed between its junction with Leigh Crescent.
Reason for Order: To safely enable works for boundary box and meter renewal.
Order Commences: 22 January 2026 for up to 18 months.
Anticipated Completion: 23 January 2026.
Access & Diversion: No diversion available.
Contractor: Chevron Traffic Management Ltd, Tel: 03300 080 820.
For all of the above temporary orders, pedestrian access to and egress from properties and land situated adjacent to the length of road to be closed will be maintained at all times. Vehicular access will be maintained where possible.
To report any problems with these works or for further details of our current & planned roadworks visit our website warwickshire.gov.uk/roadworksmap or call us 01926 412515.
S Duxbury, Director of Strategy, Planning & Governance,
Shire Hall, Warwick CV34 4RL Date 15 Jan 2026

PUBLIC NOTICES

NOTICE OF APPLICATION FOR A NEW PREMISES LICENCE UNDER THE LICENSING ACT 2003
Notice is hereby given that **Panthera Leo Ltd** has applied to Coventry City Council for a Full Variation Postal Address of premises: **Imperial, (Catch 22), 25A Hertford Street, Coventry, CV1 1LF**
Details of Application: **To extend all current licensable activity from 4.00 am – 6.00 am 7 Days a Week. To change the premises name to Imperial; and To amend the wording on two of the existing conditions.**
Any person wishing to lodge a representation concerning this application may write to: Licensing Authority, Coventry City Council, PO Box 7097, Coventry CV6 9SL.
Or send an email to: licensing@coventry.gov.uk.
The application may be viewed during normal office hours at the above address and further information may be available at www.coventry.gov.uk on the public register.
Any Representation relating to this application must be made in writing to the Licensing Authority by **6 February 2026**
Please note it is an offence knowingly or recklessly to make a false statement in connection with an application. The maximum fine on summary conviction for this offence is Unlimited.

PUBLIC NOTICES

Notice of a new premises licence under Section 17 Licensing Act 2003
Felicity Luxmoore is applying for new grant of a Premises Licence for **Dunchurch Pools Marina, J Marine Ltd, Dunchurch Pools Marina, J Marine Park, Barb, CV23 3AN.**
It is proposed to licence these premises for **Supply of Alcohol**
The full application can be inspected by contacting the department below Opening hours - Monday-Wednesday Shop starts at 9:30 ends at 17:00. Café starts at 9:30 ends at 14:30. Thursday-Saturday Shop starts at 9:30 ends at 17:00. Café starts at 9:30 ends at 16:30. Events start 12:00 end at 20:00. Sunday Shop starts at 10:00 ends at 17:00. Café starts at 10:00 ends at 15:00
Representations can be made before 10/02/26 in writing to: **The Licensing Team, West Northamptonshire Council, One Angel Square, Angel Street, Northampton, NN1 1ED, 0300 126 7000, licensing@westnorthants.gov.uk, www.westnorthants.gov.uk**
It is an offence knowingly or recklessly to make a false statement in connection with an application and the maximum fine for which a person is liable on summary conviction for the offence is unlimited

ANNOUNCEMENTS

FUNERAL DIRECTORS

Henry Ison & Sons
Funeral Directors

Established 1907

Creating a funeral as unique as your Loved One

We are here to support and guide you, Caring for families of all faiths.


24 Hour Personal Care
02476 997 811

Branches in Coventry, Leamington Spa and Kenilworth

henryison.co.uk Funeral Partners

ANNOUNCEMENTS

IN MEMORIAM



Graham Fullwood

You are in my thoughts every day. You are never forgotten and forever loved.
How could I forget your infectious laugh and smile. Your spirit will live on forever in my heart. My Sweet Lord, the song you liked, a beautiful song and you are with him now. God bless you.
A limb has fallen from the family tree that says remember the best times, the laughter, the song.
The good life I lived while I was strong. You are forever loved.
Love Carol and family
xxx

DEATHS

William Gibson MBE

Peacefully at rest at home on the 9th January 2026 after a long illness fought with dignity
Bill aged 73 years was a beloved father to Scott and Emma, dotting grandfather to Lukas and dearest partner to Linda.
He will be greatly missed by all who knew him.
A service to celebrate Bill's life will take place at Rainsbrook Crematorium on Tuesday the 27th of January at 3pm.
Would those wishing to attend please meet directly at the Crematorium.
In lieu of flowers we ask you to consider a donation to Myton Hospice whose support and care allowed Bill to pass peacefully at home as he wished.
Direct enquiries to Co-op funeral care, Regent street, Rugby.
01788462614

If you have a message for a loved one, give our team a call



01527 588688

SALES & WANTS

MISCELLANEOUS

BEDS NEW Doubles £95 Singles £59 King size £159. Second hand doubles £49 Singles £29 Fridges £49 Freezers £59 Can deliver 07703 925662
RECLINER CHAIR electric rise & recline £169 Manual recline chair £60 High seated chair £40 Can deliver 07703 925662

TRAILER chassis 2 wheel steel frame fair condition, 6'x42"x15" deep, drive away, no reasonable offer refused, space needed 07967401319
GREY leather recliner armchair, good quality, apart from bare patches, hence price £35 cv12 area Tel: 07967401319
BLACK Leather armchair vgc, CV12 area; £45 (no offers) Tel: 07967401319
CUGGL travel cot for sale grey gc. With mattress. Used as spare at grandparents house. 100 x 74 x 74. £20. Phone: 01788840581

WARDROBE - free standing 2 door in pine 6ft x 3ft in good condition owned for 35 years £50 01386 438846 (evenings only)
RECLINER chair 'Sherbourne' fully electric finished in Tuscan Coffee £95 01386 438846 (evenings only)

NEW Clarks Suede Trainers Black / White Cica C-SHX Combo Size 5F £15 01527853345
6 Clear Glass Storage Jars with Airtight Lids 190g £6 01527853345
DELIA Smith's Winter Recipe Book Excellent Condition £5 01527853345
READERS Digest Creative Cookery Book VGC £6 01527853345
NEW 100% Luxury Green Wool Carpet Runner 64 x 25" Whipped Edge Remnant £15 01527853345
64 Amscan Paper Cups Balloon Design 8 Sealed Packs of 8 Cups £5 01527853345
6 Clear Glass Storage Jars with Airtight Lids 190g £6 01527853345

FIVE Minton Bellemead salad plates (8") blue flowers, bone china, very good clean condition. £3.00 for all. Tel: 07934132759
CARPET OFFCUT - brand new, berber, hard wearing, felt backed, mid brown / cream mixture, no matching pattern so could cut & piece together. size 6 foot 8 inches long x 2 foot 1 inch wide. £3.00. Tel: 07934132759
LADIES M & S Classic fully lined lightweight jacket with detachable hood. Light turquoise. Hardly worn. Size 12. £3.00. (1 Can forward photos if interested) Tel: 07934132759
REVELATION durable travel suit / garment bag, with shoulder strap & carry handle. Two hangers, multiple pockets, zip closure, colour black. £3.00. Tel: 07934132759
MAHOAGANY table 6foot x 3foot and 3 draws 5foot x 3foot also VGC £75 07825 336 015
MAHOAGANY side board with three draws 5foot x 3foot also VGC £75 07825 336 015
DARK brown leather sofa plus single chair £60 (cash only) 07599203623

MAMAS & Papas, large rocking horse on wooden frame. Very good condition (collection only) £50.00. Tel: 07934132759
BLACK wrought iron ornate slimline wall mirror. Decorative frame with glass / wrought iron leaves. 39" long x 12" wide approx. £3.00. Tel: 07934132759

WARDROBE - free standing 2 door in pine 6ft x 3ft in good condition owned for 35 years £50 01386 438846 (evenings only)
RECLINER chair 'Sherbourne' fully electric finished in Tuscan Coffee £95 01386 438846 (evenings only)

NEW Clarks Suede Trainers Black / White Cica C-SHX Combo Size 5F £15 01527853345
6 Clear Glass Storage Jars with Airtight Lids 190g £6 01527853345
DELIA Smith's Winter Recipe Book Excellent Condition £5 01527853345
READERS Digest Creative Cookery Book VGC £6 01527853345
NEW 100% Luxury Green Wool Carpet Runner 64 x 25" Whipped Edge Remnant £15 01527853345
64 Amscan Paper Cups Balloon Design 8 Sealed Packs of 8 Cups £5 01527853345
6 Clear Glass Storage Jars with Airtight Lids 190g £6 01527853345

FIVE Minton Bellemead salad plates (8") blue flowers, bone china, very good clean condition. £3.00 for all. Tel: 07934132759
CARPET OFFCUT - brand new, berber, hard wearing, felt backed, mid brown / cream mixture, no matching pattern so could cut & piece together. size 6 foot 8 inches long x 2 foot 1 inch wide. £3.00. Tel: 07934132759
LADIES M & S Classic fully lined lightweight jacket with detachable hood. Light turquoise. Hardly worn. Size 12. £3.00. (1 Can forward photos if interested) Tel: 07934132759
REVELATION durable travel suit / garment bag, with shoulder strap & carry handle. Two hangers, multiple pockets, zip closure, colour black. £3.00. Tel: 07934132759
MAHOAGANY table 6foot x 3foot and 3 draws 5foot x 3foot also VGC £75 07825 336 015
MAHOAGANY side board with three draws 5foot x 3foot also VGC £75 07825 336 015
DARK brown leather sofa plus single chair £60 (cash only) 07599203623

MAMAS & Papas, large rocking horse on wooden frame. Very good condition (collection only) £50.00. Tel: 07934132759
BLACK wrought iron ornate slimline wall mirror. Decorative frame with glass / wrought iron leaves. 39" long x 12" wide approx. £3.00. Tel: 07934132759

WARDROBE - free standing 2 door in pine 6ft x 3ft in good condition owned for 35 years £50 01386 438846 (evenings only)
RECLINER chair 'Sherbourne' fully electric finished in Tuscan Coffee £95 01386 438846 (evenings only)

NEW Clarks Suede Trainers Black / White Cica C-SHX Combo Size 5F £15 01527853345
6 Clear Glass Storage Jars with Airtight Lids 190g £6 01527853345
DELIA Smith's Winter Recipe Book Excellent Condition £5 01527853345
READERS Digest Creative Cookery Book VGC £6 01527853345
NEW 100% Luxury Green Wool Carpet Runner 64 x 25" Whipped Edge Remnant £15 01527853345
64 Amscan Paper Cups Balloon Design 8 Sealed Packs of 8 Cups £5 01527853345
6 Clear Glass Storage Jars with Airtight Lids 190g £6 01527853345

FIVE Minton Bellemead salad plates (8") blue flowers, bone china, very good clean condition. £3.00 for all. Tel: 07934132759
CARPET OFFCUT - brand new, berber, hard wearing, felt backed, mid brown / cream mixture, no matching pattern so could cut & piece together. size 6 foot 8 inches long x 2 foot 1 inch wide. £3.00. Tel: 07934132759
LADIES M & S Classic fully lined lightweight jacket with detachable hood. Light turquoise. Hardly worn. Size 12. £3.00. (1 Can forward photos if interested) Tel: 07934132759
REVELATION durable travel suit / garment bag, with shoulder strap & carry handle. Two hangers, multiple pockets, zip closure, colour black. £3.00. Tel: 07934132759
MAHOAGANY table 6foot x 3foot and 3 draws 5foot x 3foot also VGC £75 07825 336 015
MAHOAGANY side board with three draws 5foot x 3foot also VGC £75 07825 336 015
DARK brown leather sofa plus single chair £60 (cash only) 07599203623

MAMAS & Papas, large rocking horse on wooden frame. Very good condition (collection only) £50.00. Tel: 07934132759
BLACK wrought iron ornate slimline wall mirror. Decorative frame with glass / wrought iron leaves. 39" long x 12" wide approx. £3.00. Tel: 07934132759

WARDROBE - free standing 2 door in pine 6ft x 3ft in good condition owned for 35 years £50 01386 438846 (evenings only)
RECLINER chair 'Sherbourne' fully electric finished in Tuscan Coffee £95 01386 438846 (evenings only)

NEW Clarks Suede Trainers Black / White Cica C-SHX Combo Size 5F £15 01527853345
6 Clear Glass Storage Jars with Airtight Lids 190g £6 01527853345
DELIA Smith's Winter Recipe Book Excellent Condition £5 01527853345
READERS Digest Creative Cookery Book VGC £6 01527853345
NEW 100% Luxury Green Wool Carpet Runner 64 x 25" Whipped Edge Remnant £15 01527853345
64 Amscan Paper Cups Balloon Design 8 Sealed Packs of 8 Cups £5 01527853345
6 Clear Glass Storage Jars with Airtight Lids 190g £6 01527853345

FIVE Minton Bellemead salad plates (8") blue flowers, bone china, very good clean condition. £3.00 for all. Tel: 07934132759
CARPET OFFCUT - brand new, berber, hard wearing, felt backed, mid brown / cream mixture, no matching pattern so could cut & piece together. size 6 foot 8 inches long x 2 foot 1 inch wide. £3.00. Tel: 07934132759
LADIES M & S Classic fully lined lightweight jacket with detachable hood. Light turquoise. Hardly worn. Size 12. £3.00. (1 Can forward photos if interested) Tel: 07934132759
REVELATION durable travel suit / garment bag, with shoulder strap & carry handle. Two hangers, multiple pockets, zip closure, colour black. £3.00. Tel: 07934132759
MAHOAGANY table 6foot x 3foot and 3 draws 5foot x 3foot also VGC £75 07825 336 015
MAHOAGANY side board with three draws 5foot x 3foot also VGC £75 07825 336 015
DARK brown leather sofa plus single chair £60 (cash only) 07599203623

MAMAS & Papas, large rocking horse on wooden frame. Very good condition (collection only) £50.00. Tel: 07934132759
BLACK wrought iron ornate slimline wall mirror. Decorative frame with glass / wrought iron leaves. 39" long x 12" wide approx. £3.00. Tel: 07934132759

MISCELLANEOUS

9 Square Ceramic Tiles; Neutral Daisy Design 10 x 10cm For Craftwork / Coasters etc £5. Card Making Bundle: Rubber Stamps, Positioner, Blank Cards Stock Light Box plus More £20 01527853345
GIRLS bike 16" wheel in immaculate condition, no marks used twice £150 01527 872540
DOUBLE BED divan light grey with matching headboard, no mattress vgc £20 Tel: 07989 868546
MAMAS & Papas, large rocking horse on wooden frame. Very good condition (collection only) £50.00. Tel: 07934132759
BLACK wrought iron ornate slimline wall mirror. Decorative frame with glass / wrought iron leaves. 39" long x 12" wide approx. £3.00. Tel: 07934132759
FIVE Minton Bellemead salad plates (8") blue flowers, bone china, very good clean condition. £3.00 for all. Tel: 07934132759
CARPET OFFCUT - brand new, berber, hard wearing, felt backed, mid brown / cream mixture, no matching pattern so could cut & piece together. size 6 foot 8 inches long x 2 foot 1 inch wide. £3.00. Tel: 07934132759
LADIES M & S Classic fully lined lightweight jacket with detachable hood. Light turquoise. Hardly worn. Size 12. £3.00. (1 Can forward photos if interested) Tel: 07934132759
REVELATION durable travel suit / garment bag, with shoulder strap & carry handle. Two hangers, multiple pockets, zip closure, colour black. £3.00. Tel: 07934132759
MAHOAGANY table 6foot x 3foot and 3 draws 5foot x 3foot also VGC £75 07825 336 015
MAHOAGANY side board with three draws 5foot x 3foot also VGC £75 07825 336 015
DARK brown leather sofa plus single chair £60 (cash only) 07599203623

9 Square Ceramic Tiles; Neutral Daisy Design 10 x 10cm For Craftwork / Coasters etc £5. Card Making Bundle: Rubber Stamps, Positioner, Blank Cards Stock Light Box plus More £20 01527853345
GIRLS bike 16" wheel in immaculate condition, no marks used twice £150 01527 872540
DOUBLE BED divan light grey with matching headboard, no mattress vgc £20 Tel: 07989 868546
MAMAS & Papas, large rocking horse on wooden frame. Very good condition (collection only) £50.00. Tel: 07934132759
BLACK wrought iron ornate slimline wall mirror. Decorative frame with glass / wrought iron leaves. 39" long x 12" wide approx. £3.00. Tel: 07934132759
FIVE Minton Bellemead salad plates (8") blue flowers, bone china, very good clean condition. £3.00 for all. Tel: 07934132759
CARPET OFFCUT - brand new, berber, hard wearing, felt backed, mid brown / cream mixture, no matching pattern so could cut & piece together. size 6 foot 8 inches long x 2 foot 1 inch wide. £3.00. Tel: 07934132759
LADIES M & S Classic fully lined lightweight jacket with detachable hood. Light turquoise. Hardly worn. Size 12. £3.00. (1 Can forward photos if interested) Tel: 07934132759
REVELATION durable travel suit / garment bag, with shoulder strap & carry handle. Two hangers, multiple pockets, zip closure, colour black. £3.00. Tel: 07934132759
MAHOAGANY table 6foot x 3foot and 3 draws 5foot x 3foot also VGC £75 07825 336 015
MAHOAGANY side board with three draws 5foot x 3foot also VGC £75 07825 336 015
DARK brown leather sofa plus single chair £60 (cash only) 07599203623

9 Square Ceramic Tiles; Neutral Daisy Design 10 x 10cm For Craftwork / Coasters etc £5. Card Making Bundle: Rubber Stamps, Positioner, Blank Cards Stock Light Box plus More £20 01527853345
GIRLS bike 16" wheel in immaculate condition, no marks used twice £150 01527 872540
DOUBLE BED divan light grey with matching headboard, no mattress vgc £20 Tel: 07989 868546
MAMAS & Papas, large rocking horse on wooden frame. Very good condition (collection only) £50.00. Tel: 07934132759
BLACK wrought iron ornate slimline wall mirror. Decorative frame with glass / wrought iron leaves. 39" long x 12" wide approx. £3.00. Tel: 07934132759
FIVE Minton Bellemead salad plates (8") blue flowers, bone china, very good clean condition. £3.00 for all. Tel: 07934132759
CARPET OFFCUT - brand new, berber, hard wearing, felt backed, mid brown / cream mixture, no matching pattern so could cut & piece together. size 6 foot 8 inches long x 2 foot 1 inch wide. £3.00. Tel: 07934132759
LADIES M & S Classic fully lined lightweight jacket with detachable hood. Light turquoise. Hardly worn. Size 12. £3.00. (1 Can forward photos if interested) Tel: 07934132759
REVELATION durable travel suit / garment bag, with shoulder strap & carry handle. Two hangers, multiple pockets, zip closure, colour black. £3.00. Tel: 07934132759
MAHOAGANY table 6foot x 3foot and 3 draws 5foot x 3foot also VGC £75 07825 336 015
MAHOAGANY side board with three draws 5foot x 3foot also VGC £75 07825 336 015
DARK brown leather sofa plus single chair £60 (cash only) 07599203623

9 Square Ceramic Tiles; Neutral Daisy Design 10 x 10cm For Craftwork / Coasters etc £5. Card Making Bundle: Rubber Stamps, Positioner, Blank Cards Stock Light Box plus More £20 01527853345
GIRLS bike 16" wheel in immaculate condition, no marks used twice £150 01527 872540
DOUBLE BED divan light grey with matching headboard, no mattress vgc £20 Tel: 07989 868546
MAMAS & Papas, large rocking horse on wooden frame. Very good condition (collection only) £50.00. Tel: 07934132759
BLACK wrought iron ornate slimline wall mirror. Decorative frame with glass / wrought iron leaves. 39" long x 12" wide approx. £3.00. Tel: 07934132759
FIVE Minton Bellemead salad plates (8") blue flowers, bone china, very good clean condition. £3.00 for all. Tel: 07934132759
CARPET OFFCUT - brand new, berber, hard wearing, felt backed, mid brown / cream mixture, no matching pattern so could cut & piece together. size 6 foot 8 inches long x 2 foot 1 inch wide. £3.00. Tel: 07934132759
LADIES M & S Classic fully lined lightweight jacket with detachable hood. Light turquoise. Hardly worn. Size 12. £3.00. (1 Can forward photos if interested) Tel: 07934132759
REVELATION durable travel suit / garment bag, with shoulder strap & carry handle. Two hangers, multiple pockets, zip closure, colour black. £3.00. Tel: 07934132759
MAHOAGANY table 6foot x 3foot and 3 draws 5foot x 3foot also VGC £75 07825 336 015
MAHOAGANY side board with three draws 5foot x 3foot also VGC £75 07825 336 015
DARK brown leather sofa plus single chair £60 (cash only) 07599203623

9 Square Ceramic Tiles; Neutral Daisy Design 10 x 10cm For Craftwork / Coasters etc £5. Card Making Bundle: Rubber Stamps, Positioner, Blank Cards Stock Light Box plus More £20 01527853345
GIRLS bike 16" wheel in immaculate condition, no marks used twice £150 01527 872540
DOUBLE BED divan light grey with matching headboard, no mattress vgc £20 Tel: 07989 868546
MAMAS & Papas, large rocking horse on wooden frame. Very good condition (collection only) £50.00. Tel: 07934132759
BLACK wrought iron ornate slimline wall mirror. Decorative frame with glass / wrought iron leaves. 39" long x 12" wide approx. £3.00. Tel: 07934132759
FIVE Minton Bellemead salad plates (8") blue flowers, bone china, very good clean condition. £3.00 for all. Tel: 07934132759
CARPET OFFCUT - brand new, berber, hard wearing, felt backed, mid brown / cream mixture, no matching pattern so could cut & piece together. size 6 foot 8 inches long x 2 foot 1 inch wide. £3.00. Tel: 07934132759
LADIES M & S Classic fully lined lightweight jacket with detachable hood. Light turquoise. Hardly worn. Size 12. £3.00. (1 Can forward photos if interested) Tel: 07934132759
REVELATION durable travel suit / garment bag, with shoulder strap & carry handle. Two hangers, multiple pockets, zip closure, colour black. £3.00. Tel: 07934132759
MAHOAGANY table 6foot x 3foot and 3 draws 5foot x 3foot also VGC £75 07825 336 015
MAHOAGANY side board with three draws 5foot x 3foot also VGC £75 07825 336 015
DARK brown leather sofa plus single chair £60 (cash only) 07599203623

9 Square Ceramic Tiles; Neutral Daisy Design 10 x 10cm For Craftwork / Coasters etc £5. Card Making Bundle: Rubber Stamps, Positioner, Blank Cards Stock Light Box plus More £20 01527853345
GIRLS bike 16" wheel in immaculate condition, no marks used twice £150 01527 872540
DOUBLE BED divan light grey with matching headboard, no mattress vgc £20 Tel: 07989 868546
MAMAS & Papas, large rocking horse on wooden frame. Very good condition (collection only) £50.00. Tel: 07934132759
BLACK wrought iron ornate slimline wall mirror. Decorative frame with glass / wrought iron leaves. 39" long x 12" wide approx. £3.00. Tel: 07934132759
FIVE Minton Bellemead salad plates (8") blue flowers, bone china, very good clean condition. £3.00 for all. Tel: 07934132759
CARPET OFFCUT - brand new, berber, hard wearing, felt backed, mid brown / cream mixture, no matching pattern so could cut & piece together. size 6 foot 8 inches long x 2 foot 1 inch wide. £3.00. Tel: 07934132759
LADIES M & S Classic fully lined lightweight jacket with detachable hood. Light turquoise. Hardly worn. Size 12. £3.00. (1 Can forward photos if interested) Tel: 07934132759
REVELATION durable travel suit / garment bag, with shoulder strap & carry handle. Two hangers, multiple pockets, zip closure, colour black. £3.00. Tel: 07934132759
MAHOAGANY table 6foot x 3foot and 3 draws 5foot x 3foot also VGC £75 07825 336 015
MAHOAGANY side board with three draws 5foot x 3foot also VGC £75 07825 336 015
DARK brown leather sofa plus single chair £60 (cash only) 07599203623

9 Square Ceramic Tiles; Neutral Daisy Design 10 x 10cm For Craftwork / Coasters etc £5. Card Making Bundle: Rubber Stamps, Positioner, Blank Cards Stock Light Box plus More £20 01527853345
GIRLS bike 16" wheel in immaculate condition, no marks used twice £150 01527 872540
DOUBLE BED divan light grey with matching headboard, no mattress vgc £20 Tel: 07989 868546
MAMAS & Papas, large rocking horse on wooden frame. Very good condition (collection only) £50.00. Tel: 07934132759
BLACK wrought iron ornate slimline wall mirror. Decorative frame with glass / wrought iron leaves. 39" long x 12" wide approx. £3.00. Tel: 07934132759
FIVE Minton Bellemead salad plates (8") blue flowers, bone china, very good clean condition. £3.00 for all. Tel: 07934132759
CARPET OFFCUT - brand new, berber, hard wearing, felt backed, mid brown / cream mixture, no matching pattern so could cut & piece together. size 6 foot 8 inches long x 2 foot 1 inch wide. £3.00. Tel: 07934132759
LADIES M & S Classic fully lined lightweight jacket with detachable hood. Light turquoise. Hardly worn. Size 12. £3.00. (1 Can forward photos if interested) Tel: 07934132759
REVELATION durable travel suit / garment bag, with shoulder strap & carry handle. Two hangers, multiple pockets, zip closure, colour black. £3.00. Tel: 07934132759
MAHOAGANY table 6foot x 3foot and 3 draws 5foot x 3foot also VGC £75 07825 336 015
MAHOAGANY side board with three draws 5foot x 3foot also VGC £75 07825 336 015
DARK brown leather sofa

Appointments

www.careerfinder247.co.uk

TELEPHONE 01527 588688 FACSIMILE 01527 584371



Finance Administrator

Holy Trinity Church, where William Shakespeare was baptised, worshipped, and is buried, has been a place of worship for over 1,000 years and welcomes tens of thousands of visitors annually. More importantly, it remains a vibrant, working church hosting daily worship and major life events including Christenings, Weddings, and Funerals.

We are seeking a reliable and detail-focused **Finance Administrator** to support parish finances, including accounts, payroll, and shop back-office administration. This varied role works closely with the Treasurer, clergy, staff, and volunteers.

Key Responsibilities:

- Accounts payable/receivable, invoicing, banking, and reconciliations
- Payroll processing
- Basic shop administration

Skills:

- Strong attention to detail and good communication
- Excel essential; Sage/Staffology desirable
- Able to work independently and as part of a team

Hours:

20 hours per week

Salary:

£13,970 per annum

How to Apply:

Application forms are available at www.stratford-upon-avon.org or via the Parish Office (Tel: 01789 266316).

Deadline:

23:59, Sunday 25th January 2026

Interviews:

Tuesday 3rd February 2026 at the Holy Trinity Parish Centre

Gold Crest

Require the following in the Redditch, Bromsgrove, Droitwich and Kidderminster areas

Part Time Drivers

Transporting children to school. Vehicle provided.

– ALSO –

Passenger Assistants

Part time hours with or without experience.

Contact 07399 848 639

JUST CAN'T GET THE STAFF?

Bullivantmedia
GROUP LIMITED

We can offer you
GREAT LOCAL COVERAGE
IN PRINT & ONLINE

Contact
Caroline or Kelly

01527 **588625**
01527 **588749**

caroline.birkenhead@bullivantmedia.com
kelly.taylor@bullivantmedia.com

Blaze stunned by Stars in overtime before Flames win

by Aaron Sutcliffe
aaron.sutcliffe@bullivantmedia.com

ICE HOCKEY: COVENTRY Blaze slipped to a home defeat against Dundee Stars before claiming an overtime victory at Guildford Flames.

Blaze lost 5-4 in overtime on home ice against Dundee at the Skydome Arena as Coventry squandered a three-goal lead in regulation time.

Coventry then won 3-2 in overtime as Justin Bean struck just 1.52 into the additional period after the puck deflected into the net off Grant Mismash's stick.

The results mean Blaze sit eighth in the Elite League table.

Coventry started brightly against Dundee and broke the deadlock at 8.45 when Kim Tallberg jumped up into the rush from the blue line and snapped a quick wrist shot past Emil Kruse.

And Blaze doubled their lead at 19.30 as William Boysen finished Elijah Barriga's pinpoint feed at the back post following successive powerplay opportunities.

The home side struck again at 32.49 when Jere Vertanen unleashed a powerful slapshot past Kruse on the powerplay.

However, Dundee responded soon after at 34.18 as Bradley Schoonbaert finished through the legs of Blaze netminder Mat Robson.

And the Stars scored again at 38.39 when Matthew Boudens capitalised on a mispassed pass and saw his speculative effort sneak past Robson.

Dundee equalised in the third period at 50.48 as Otto Nieminen bundled home Drydn Dow's heavy blue-line shot.



Blaze lost at home to Dundee Stars. Picture by Scott Wiggins.

And the visitors completed a sensational turnaround at 52.02 when Kameron Kiely punished Blaze on the turnover.

However, Coventry took the game to overtime at 54.32 as Mack Stewart deftly tipped Tallberg's shot beyond Kruse.

But Dundee would take the extra point as Justin Bean struck just 1.52 into the additional period after the puck deflected into the net off Grant Mismash's stick.

Coventry responded with a hard-fought overtime win against Guildford on the road.

Despite another strong start from Blaze, Guildford took the lead at 9.53 as former Blaze forward Nick Seitz scored against his old side with the Flames short-handed.

Coventry spurned three powerplay chances in the first period as the visitors trailed by a single goal heading into the second period.

However, Blaze equalised at 27.12 when Boysen levelled the game as David Clements and Matthew

Gleason provided assists.

And Coventry finally made the most of a powerplay opportunity at 34.07 when Constable saw his strike awarded following a video review for a high stick.

Blaze killed two penalties to remain in front only for the Flames to draw level at 45.26 courtesy of Jake Coughler's strike.

And the visitors killed another Flames penalty to send the game to overtime.

However, Constable scored 2.49 into the extra period after Guildford netminder Jake Kupsy inadvertently dropped his stick when attempting to move the puck quickly.

Constable gleefully fired into an empty net to earn Blaze an extra point.

Coventry are next in action against Dundee on Saturday, January 17 with the face-off at 7pm at Dundee Ice Arena.

Blaze then host Glasgow Clan on Sunday, January 18 with the face-off at 5.30pm at the Skydome.

Conneely brothers replace Woodward as Sphinx boss

FOOTBALL: COVENTRY Sphinx have appointed brothers Ryan and Joe Conneely as the club's new joint managers.

The duo replace John Woodward in the Sphinx dug-out after Coventry sacked their former boss following a run of eight games without a win.

Ryan acted as interim head coach of Alfreton Town in the National League North earlier this season.

He also took on first team coach roles at Redditch United, Hednesford Town and Quorn. Joe previously managed Rugby Borough, Coventry Copsewood and Hinckley AFC.

He most recently served as joint manager at Aylestone Park.

Ryan and Joe said: "We are incredibly proud to be given the opportunity to manage Coventry Sphinx."

"Being Coventry born and bred we know what a big club this is and we cannot wait to get started."

"We will give everything to ensure the good work continues, and we are looking forward to representing this great club."

Sphinx currently sit 18th in the Northern Premier League Midlands table, one point clear of the relegation zone with at least one game in hand on the teams below them.

The club sacked former boss Woodward despite Coventry seeing their last two league matches postponed due to frozen pitches.

A club statement read: "Coventry Sphinx can confirm manager John Woodward has been relieved of his duties."

"We would like to extend our sincere thanks to John for his hard work, dedication and contribution to the club."

"As joint manager he brought our greatest moment in recent seasons with promotion to the Northern Premier League."

"We wish John success with any future football projects."

The decision to relieve Woodward of his duties means his last game in charge of the club came in a 2-1 defeat against rivals Bedworth United on New Year's Day.

Woodward helped Sphinx achieve promotion to Step Four for the first time in the club's

history in 2022/23.

He successfully kept the club in the NPL Midlands in each of the last two seasons.

Woodward posted on X: "Not the news I expected but have been relieved of my duties at Coventry Sphinx."

"A big thanks to all the loyal players and support staff who made this club what it is."

"Some great memories getting a small club into Step Four and staying there for two seasons on a modest budget."

"I couldn't have given any more and realised that players were playing for me and not the committee."

"They do not know what they've wished for."

Assistant manager Louis Guest has also departed Sphinx following the club's decision to sack Woodward.

Guest made his debut for Coventry as a teenager and went to make close to 400 appearances for the club as a player.

Guest posted on X: "Following the recent announcement, I've made a very unexpected and tough decision to leave Coventry Sphinx."

"The club has been a huge part of my life - coming through the junior ranks, into the youth team and making my first team debut at 17."

"Since then I've been fortunate enough to rack up almost 400 senior appearances, enjoy a title win and promotion to Step Four and more recently step into my role as assistant manager."

"It's been a journey with plenty of highs and challenges along the way but the memories will last forever."

"I've met some amazing people along the way and I just want to thank everyone who has played a part in the journey, previous managers, volunteers, fans and teammates."

A number of first team players have also departed the club following Sphinx's decision to change manager.

Sphinx lost 2-0 at home against lower-division Lye Town in the Birmingham Senior Cup in midweek in the club's first game since sacking Woodward.

Coventry are next in action against Anstey Nomads on Saturday, January 17 with kick-off at 3pm at Cropston Road.

New signing eager to impress at Sky Blues

ROMAIN Esse believes Coventry City head coach Frank Lampard can take his game to the next level.

Esse joined the Sky Blues on loan from Crystal Palace earlier this month and made his debut for the club against Stoke City in the FA Cup third round.

The 20-year-old became the club's second arrival of the January transfer window following the loan signing of Yang Min-Hyeok from Tottenham Hotspur.

And Esse cited Sky Blues head coach Lampard as one of the key factors in deciding to move to the Coventry Building Society Arena.

Esse said: "I've enjoyed it a lot, meeting the lads and the staff. It's all been very welcoming."

"It's a good environment. I'm determined to do whatever I can to impress here and help the side."

"It's one of the main reasons I'm here. Not just to play every week but to also raise the levels and compete."

"I've played against Coventry before and they've always been a tough opponent."

"And Frank Lampard, from



Romain Esse made his Sky Blues debut against Stoke in the FA Cup.

watching him on my TV, helps a lot.

"It just feels like the right environment and the right person to take me to the next level in my development."

Esse made just eight appearances for parent club Palace in all competitions this season including three in the UEFA Conference League.

He moved to Palace from Championship side Millwall in January last year after scoring seven goals in 66 appearances for

the Lions.

And the young forward wants to excite the Coventry fans on the pitch.

Esse added: "I'd describe myself as exciting who gets the fans up and off their seats."

"I'm here to get the job done and the points and the wins for the Coventry fans."

"This is the pivotal part to play until the season ends."

"I don't have to think about goals and assists, with game-time, I know what I'm capable of."

Youngster targets minutes

KAI Andrews believes Coventry City can take positives from the club's FA Cup third round defeat against Stoke City.

Andrews made just his third start of the season for the Sky Blues at the bet365 Stadium alongside Josh Eccles in central midfield.

And the teenager hopes more minutes come his way in the remainder of the campaign having featured seven times from the bench in the Championship this season.

Andrews said: "We were unfortunate to lose the game in the way we did but sometimes you have to hold your hands up to a brilliant finish."

"It's definitely a performance we can take some positives away from and we can focus on the [league] season now."

"As the game went on I grew into it more. I can take a lot of positives away from the game and it's something I can build on."

"I just want to play as many minutes as I can and develop as much as I can

and help the team get to where we want to get to."

Andrews is looking forward to this weekend's M69 derby clash against rivals Leicester City.

And the 19-year-old remains confident Coventry will rediscover their early season form which saw the Sky Blues take a commanding lead at the top of the table.

Andrews added: "I've been training with Josh for years so we've got a good understanding as players and how we can work together."

"The new signings have brought so much energy. They're both very direct in the way they play and that's something very fresh for us."

"Everyone is very excited for [Leicester] in the derby at home. I'm sure the fans will be as well."

"We just want to try and get to where we know we can as a team. We know what we can achieve as a team."

"We started the season very fast and we're going to find our form again."

CRS LTD
 Spring Lane South, Malvern WR14 1AT
 ATF's are the **ONLY** legal way to scrap your vehicles
BUYERS
 of all SCRAP Metals and SCRAP Vehicles
 The **ONLY** authorised treatment facility in Malvern!
 Best Prices Paid • Collection & Skip Drops Farm
 Equipment, Copper, Brass etc. • 50 Ton Weigh Bridge
ID REQUIRED - 01684 578081
 www.crs-malvern.co.uk

Observer SPORT



9 772040 128006
 Published by Bullivant Media Group Ltd, Webb House,
 Church Green East, Redditch, Worcestershire, B96 8BP
 Printed by Newsquest, Newspaper House, Osney
 Mead, Oxford, Oxfordshire, OX2 0EJ

VINYL RECORDS WANTED
 Buying since 1978
 Get your cash TODAY!
 I will come to you
Phone PAUL
01527 893992 | 07765 142354

www.rugbyobserver.co.uk

BRINGING YOU **ALL THE LATEST** SPORTS NEWS AND VIEWS FROM THE AREA

Valley must 'stay together' as club look to turn form around

FOOTBALL: GRANT Joshua stressed everyone at Rugby Town must 'stay together' following a difficult run of results.

Valley saw their weekend fixture against Belper Town postponed due to a frozen pitch.

A rearranged date for the Northern Premier League Midlands fixture will be confirmed in due course.

However, Rugby have taken just four points from their last nine league games.

The results leave Valley 17th in the NPL Midlands table, just two points clear of the relegation zone.

And with 17 games left to play this season, Joshua admits his side must rediscover their confidence

to turn their fortunes around.

Joshua said: "I said when I took over there would be specific times when results wouldn't be good enough.

"When that comes and the tree starts to shake, it's critical that the club stays together - the staff, players and fans alike.

"There's still no excuse for some of the performances of late, but there will be no panic from me, as I know what this set of players are capable of.

"This squad has an abundance of talent and they haven't suddenly become bad players, but if you could bottle one thing in football, it would be confidence - and that's what we're lacking at the moment.

"To get it back, you have to double down on the basics, not look

too far ahead and rebuild mental fortitude one training session at a time."

Rugby face struggling Boldmere St Michaels this weekend with Valley's weekend opponents currently in the relegation zone.

Town claimed a memorable 3-0 win at Boldmere's Amber Arena in 2023 to clinch survival on the final day of the campaign.

However, a 4-0 defeat at the same ground last season proved then manager Carl Adams' last game in charge of the club.

Since Rugby's defeat at Shepshed Dynamo on New Year's Day, boss Joshua has added young goalkeeper Xander Grieves to his squad.

The 16-year-old joins on a work experience loan from Wolverhampton Wanderers.



Rugby Town boss Grant Joshua admits Valley are 'lacking confidence'. Picture by Martin Pulley.

And forward Kobi Bivens has also joined Valley following impressive spells with Sileby Rangers and Ilchester.

The 24-year-old has scored 44

goals in 53 games over the last 18 months representing both clubs.

Rugby travel to Boldmere on Saturday, January 17 with kick-off at 3pm at the Amber Arena.

CASHBROKERS

LEAMINGTON SPA

PAWNBROKING LOANS
 SCRAP GOLD & SILVER
 BUY BACK
 JEWELLERY & WATCHES
 COINS & BULLION

CASH PAID
**FOR GOLD, SILVER,
 COINS & BULLION**



01926 258252

144 Parade, Leamington Spa, CV32 4AG

www.cashbrokersleamingtonspa.co.uk



Visit the **1p** monzo shop

Sat 17 Jan 2026

Broadgate Square

Broadgate, Coventry, CV1 1NF

10am - 6pm

CBS Arena

Judds Ln, Coventry, CV6 6GE

10am - 12pm

monzo



In person Monzo customer exclusive. Limited stock. Ts&Cs apply.



monzo



Visit monzo.com/ccfc

In person Monzo customer exclusive. Limited stock. Ts&Cs apply.

