



Observer

Rugby & Lutterworth 

Friday, February 27th 2026 Week 9

 facebook.com/rugby.observer

rugbyobserver.co.uk

 @rugbyobserver t: 01926 451900

Your **FREE** edition - just pick one up and keep up with the news

OPENING 16th MARCH

OPEN DAY - 14th MARCH 10am to 3pm

Come & meet the team & look around our fabulous facilities at



RUGBY VET HOSPITAL

PUTTING YOUR PETS FIRST

RUGBYS ONLY INDEPENDENT 24 HOUR VETS

Opening offer

Fixed price
dentals

£400

in March/April

Including anaesthetic,
blood test, X-rays,
extractions

SEE INSIDE FOR MORE DETAILS



Last chance

for 15% discount

for new clients

off your first

6 months

of vet fees

Register at www.rugbyvethospital.co.uk

STATE OF THE ART FACILITIES AND TRADITIONAL VALUES

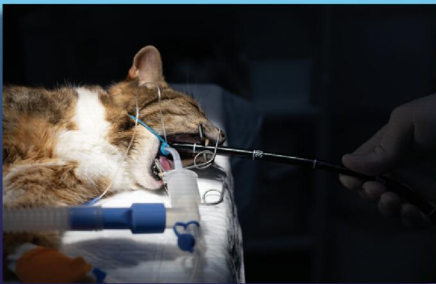
Our fantastic new hospital can be found in the picturesque Hillmorton Locks



Our historic canal side building houses a range of advanced diagnostic and surgical equipment, which we have illustrated here.



We are delighted to be able to offer your pets a CT (Computed Tomography) Scan, which provides us with detailed information about the inside of your pet.



Our independent ownership allows us to put pets & people first - always.



We offer a range of conventional & laparoscopic surgical procedures from our advanced qualified team of vets.



We have an extensive in-house laboratory for fast test results, X-ray, ultrasound and endoscopic examinations.



We also see exotic species, from bunnies to snakes, chinchillas to chickens! We can't wait to meet all of our new clients and pets of Rugby, 24 hours a day, 7 days a week.



Cash-saving solar move picks up engery award

by **Andy Morris**
 andy.morris@bullivantmedia.com

A PIONEERING solar energy project at Rugby's council-owned leisure centre has taken a top prize at the West Midlands Energy Efficiency Awards.

The project, which involved the installation of 378 solar panels at the Queens Diamond Jubilee Leisure Centre, won the Small Scale Project of the Year award.

In its first 12 months of operation, the system has generated enough energy to power around 55 households for a year – and is expected to save over £1million in energy costs over its lifetime.

The centre's Facilities Manager Paulo Gomez said: "We're thrilled to receive this award, which recognises not only the investment in our facilities but also our long-term commitment to environmental stewardship."

"This project demonstrates how leisure centres can lead the way in creating greener, more efficient community spaces. This award highlights the collective effort of our teams and partners to bring sustainable innovation into the heart of public recreation."

"It is rewarding to see the impact the system is already having, both for the environment and for operational efficiency."



The project was funded by Sport England, and installed by Rugby local business which, like many across the country, faces the difficult challenge of increasing energy costs.

M E Solar owner Rob Melbourne said: "It was a fantastic opportunity as a local company to deliver

a project of this scale to another local business which, like many across the country, faces the difficult challenge of increasing energy costs.

"With the support from Rugby

Borough Council and the amazing staff from the leisure centre, we were able to deliver a fantastic system that will help reduce these costs and benefit the environment".

Rugby Borough Council's chief officer for leisure and wellbeing Tom Kittendorf (centre) and M E Solar owner Rob Melbourne (second right) celebrate the award with staff from the Queens Diamond Jubilee Leisure Centre.

Coun Maggie O'Rourke, Rugby Borough Council's portfolio holder for Partnerships and Wellbeing, added: "The success of the installation aligns with Rugby Borough Council's broader sustainability goals, which include investing in renewable technologies, enhancing energy resilience, and reducing carbon emissions across the estate."

Now in their 12th year, the Energy Efficiency Awards aim to recognise leadership in practical delivery, collaboration and professionalism.

Awards chairman Gary Braybrooke said: "The organisations and individuals recognised through these awards are operating in a period of real uncertainty in the sector. Despite that, they continue to deliver, to innovate and to hold standards high."

"These projects and people show that working together – across supply chains, local authorities and communities – remains the most powerful way to deliver meaningful, lasting change."



Tel: 0800 3032559
 Mob: 07773 911552
 www.drives4u.co.uk

Are you looking to improve or enlarge your driveway or patio?

We can provide you with a beautiful new patio or driveway in Coventry, Bromsgrove, Redditch, Solihull, Leamington, Kidderminster and Birmingham

5 Year guarantee

- We've designed and built just about every shape and size of driveway and patio you can imagine, so we will not be phased by your project.
- We strive to achieve 100% satisfaction and unlike other driveway companies, with us you pay absolutely nothing upfront.
- Give us a call and you could save upto £1000



Tel: 0800 3032559 | Mob: 07773 911552 | www.drives4u.co.uk

Championing the needs of Rugby residents since 1991 and delivering the news to you every week

Adaptation will bring cult fantasy classic from page to the RSC stage



Winter is coming (to the RSC this summer) - left to right - Duncan Macmillan, George R.R. Martin, Dominic Cooke. Picture by Seamus Ryan (RSC).

GAME of Thrones is being brought to life on stage by The Royal Shakespeare Company in Stratford. The world premiere of Game of Thrones: The Mad King, a new play based on the fan-

tasy novels by George R.R. Martin, adapted by Duncan Macmillan and directed by Dominic Cooke, will open in the summer. Featuring familiar characters from the houses Targaryen, Stark, Lannister,

Baratheon and Martel, the play focuses on the final years before the events of the novels, revealing a chapter of Westerosi history that set the stage for the phenomenally books and TV series.

Executive producer and creator George R.R. Martin said: "When I first wrote Game of Thrones, I never imagined that it would be anything other than a book. It was a place for my imagination to exist without limits. To my great surprise, it was adapted for a series and viewers have been able to enter the world of my imagination through the medium of television.

"For my work to now be adapted for the stage is something I did not expect but welcome with great enthusiasm and excitement. Theatre offers something unique. A place for mine and the audience's imagination to meet and hopefully create something magical.

"For me, the RSC was the obvious choice when thinking about putting a Game of Thrones story on the stage. Shakespeare is the greatest name in English literature, and his plays have been a constant source of inspiration to me and my writing. Not only that, he faced similar challenges in how to put a battle on stage, so we are in good company.

"It will be thrilling to watch the events of this new play unfold in a live environment. Duncan's masterful script honours the world completely, and I am so excited for both fans of the series, and perhaps people who have never picked up one of my books, to experience this new story in a theatre."

Adaptor Duncan Macmillan and director Dominic Cooke added: "The play is a prequel, taking place over a decade before the events of Game of Thrones. A long winter has started to thaw and, for the first time in years, all the great houses come together for a tournament - destined to be the greatest of the age. It feels like a new dawn, full of hope and opportunity. But tournaments always have a darker purpose.

"George's storytelling is

Shakespearean in its scale and its themes - dynastic struggle, ambition, rebellion, madness, prophecy, ill-fated love. From the beginning, Shakespeare's histories and tragedies have been our primary reference for the ambition of this production, so the RSC feels like a natural home.

"It will be thrilling for us to share this new play with audiences, both those that know and love George's books and HBO's series, but also audiences who know nothing and want to come and experience something both beautifully intimate and truly epic."

Priority booking for RSC members will go on sale from April 14 with public booking to be announced the same month. Demand for tickets is expected to be huge and sales are being limited to four per person.

Full details of the upcoming RSC season, including Game of Thrones: The Mad King, will be announced on Thursday (February 26).

Visit rsc.org.uk for further details.

Open Day

Saturday 7th March from 10am – 12pm
walk-ins welcome

Providing a fully inclusive service for families with children aged 6 weeks to 5 years from 7.30am to 6.30pm

As recommended on Daynurseries.co.uk, please visit to see what our parents say

If you are a working parent you could be eligible for 30 hours a week of free childcare.

At Emscote House the warm and welcoming environment ensures that your child's individual needs are prioritised, and their interests nurtured.



T: 01926 425067
E: emscote.house@childbase.com

Emscote House Day Nursery and Preschool, 46 Warwick Place, Leamington Spa, Warwickshire CV32 5DE



Scan me for full nursery details



Now taking registrations

We'd love to show you around

bargains_from_yesteryear

BENN Hall, Rugby

Newbold Rd CV21 2LN

Rugby Antiques, Collectors & Vintage Fair

Sunday 1st March

Open 9:30 – 3:30pm
FREE Sunday Parking
£1.50 Adult Adm.
Refreshments Available

Enquiries 01827 895 899
bargainsfromyesteryear.com
Followed by Sunday 5th April '26

PUBLIC NOTICES

For all your latest information on
Planning Proposals, Traffic Notices,
Goods Vehicle Operator Licences,
Licences To Sell Alcohol and Probate Notices...

See page 27

Council tax up but budget targets 'improvements and investment'

RUGBY Borough Council (RBC) will raise its share of Council Tax by an average of £6.61 a year from April.

The council has approved a 2.99 per cent rise in its share of the tax, which it says will help to protect priority services while investing in the town centre and local neighbourhoods.

Funding has been outlined for 11 projects to support town centre regeneration, including exploring options for the council to take control of the Rugby Central shopping centre and the Brotherhood House site.

The Love Rugby Festival will continue to receive funding following its launch last year, together with other town centre events and activities.

The budget will also fund services previously provided by Rugby First, including street cleansing and commu-

nity safety.

It also introduces a new Liveable Neighbourhoods programme which aims to make communities across Rugby greener and more connected through improved planting in urban areas, better information on accessibility at public spaces and buildings, allotment grants, and work to increase engagement on climate change.

Funding is also included to strengthen voluntary and community organisations across the borough, including the Percival Guildhouse, Hoskyn Centre, Rugby Ecohub and the relaunched Rugby Disability Forum.

The programme also includes a new councillor grant scheme, under which each borough ward councillor will receive £3,000 to support local projects such as tackling fly tipping, antisocial behaviour and littering, or supporting community groups and green spaces.

RBC leader Coun Michael Moran said: "Since becoming Leader in 2024, I have focused on laying the groundwork to make real improvements to the town centre to support businesses and our regeneration plans.

"Our Liveable Neighbourhoods programme will help improve communities across the borough, and I am particularly proud that we are investing in grants that go directly to local sports clubs, community groups and allotment associations. We want to help residents get out and about, supporting both their physical and mental health."

Coun Jerry Roodhouse, Chair of the Rugby Town Centre Working Group, said: "It is very clear that we need to continue to invest in the town centre, through physical changes that make the town more attractive and through events and activities.

"That must remain a focus for the council, and I am pleased that this budget continues that support."

After Warwickshire County Council (see article below) and Warwickshire Police raised their larger shares of Council Tax by £81.12 and £15 a year respectively for average Band D properties, Rugby residents will pay £102.73 more on average during the 2026-27 financial year.

RBC leader Coun Michael Moran.



Shire Hall, Warwickshire County Council's headquarters in Warwick.

County sets budget after angry divisions

WARWICKSHIRE County Council has finally set its budget for the coming year.

After hours of debate and a nearly two week adjournment, a slim majority of councillors voted in support of a budget which includes a 4.4 per cent increase in council tax - the equivalent of an additional £1.56 per week for a Band D property.

The vote, which was won by just six votes, follows an initial meeting on February 5 when no agreement could be reached.

Reform was forced to ditch its proposal for a 3.89 per cent rise after it failed to get the agreement of other groups on the council.

The budget was agreed after Conservative councillors gave it their support, but Liberal Democrats and Green councillors refused to give it their backing arguing it failed to invest in young people, and put increasing financial risks on the council. Labour councillors abstained from the vote.

Liberal Democrats led a bid, with support from Green Party and Whitnash Residents' councillors, to pass a budget resolution which would see council tax rise by 4.8 per cent, but it failed to get enough support.

Coun Jerry Roodhouse, leader of the Liberal Democrat Group, said: "In proposing our amendment Liberal Democrats stood for two clear things - investing in our children and young people and ensuring the financial stability of Warwickshire for the future. Reform and the Conservatives failed on both.

"Our amendment would have supported children and young people from infancy, through Children and Family Hubs,

through to adulthood by supporting those Not in Education, Employment or Training. Children and young people are our future and we want to invest in them early.

"For the sake of 32p a week on a Band D property, Reform and the Conservatives risked the financial future of Warwickshire and we don't have to look far to see the size of that risk. Just to our west in Worcestershire,

Reform has asked for permission to increase their council tax by up ten per cent, all because the previous Conservative administration failed to plan for the long-term."

WCC Reform leader Coun George Finch was adamant the budget was right for Warwickshire.

"As leader of Warwickshire County Council, I want to be clear that we have listened carefully to the people of Warwickshire. We understand what our residents expect from their county council and where their priorities lie. This budget, alongside our medium-term financial strategy, has been shaped around those priorities as we work to deliver the greatest possible impact with the resources available to us.

"Decisions to increase council tax are never taken lightly. We must strike the right balance between protecting the vital services that support our most vulnerable residents and recognising the financial pressures facing households, particularly during a period of rising living costs. That is why we continue to focus on efficiencies within the council first, before asking our residents to contribute more."

just go.holidays

For more information, or to book, please call
03332 342 514 Quote **osg**

★★★★★ ★ Trustpilot

Reader Travel

SUPERDEAL

Eastbourne Superdeal
Departing Wed 25 Mar '26

Popular Eastbourne is perfect for a change of scenery! Come along and enjoy plenty of time to explore or relax at our hotel on the promenade: complete with a bar offer, entertainment, meals and return coach travel, this superdeal is excellent value for money!

SO MUCH INCLUDED...

- ✓ Return coach travel **from Rugby**
- ✓ 2 nights at the Majestic Hotel, Eastbourne (JG2 rating) with dinner & breakfast
- ✓ 2 for 1 bar (6pm-9pm) on selected drinks
- ✓ Entertainment on one evening
- ✓ Free time in Eastbourne

SAVE £10

Quote OSG - Book by 13 Mar 2026

3 Days by Coach only £119
Single Supplement £30

These packages are subject to Just Go! Holidays terms & conditions. Coach bookings are protected by Bonded Coach Holidays & the Association of Bonded Travel Organisers (Trot) Ltd. Air holidays are ATOL protected No. 10899. Prices are per person, based on two people sharing a room & honoured on bookings made up to 7 days post publication, after which prices may fluctuate. Choices of date, hotel, airport or pick up location may incur a supplement. Please see website or call for full details.

Visit us online at
[justgo.holidays.com/OSG](https://www.justgo.holidays.com/OSG)

ABBA Voyage Live in London
Departing Sun 19 Apr '26

Have you always wanted to experience the magic of an ABBA concert? Well now is your chance to say Thank You for the Music! Join us at the ABBA Arena for the incredible ABBA Voyage; where the global pop icons appear on stage as digital avatars brought to life.

SO MUCH INCLUDED...

- ✓ Return coach travel **from Rugby, Coventry**
- ✓ Overnight stay at a selected hotel (JG3 or JG4 rating) with breakfast
- ✓ Ticket to ABBA Voyage at the ABBA Arena with coach transfers (dancefloor, standing)
- ✓ Free time in London for shopping & sightseeing

Upgrade to a seated ticket in Block F or K for £25pp or Block G or J for £45pp

2 Days by Coach only £249
Single Supplement £60

Reading campaign

THE MAGIC of story time is being celebrated at a Rugby nursery.

More than 120 children from the town's Busy Bees nursery have joined the 'get the reading buzz' pledge - a nationwide initiative aiming to share 45 million books with children this year.

The drive comes as figures have revealed children's love of reading has fallen to a 20-year low, with just one-in-three youngsters enjoying reading in their free time, and fewer than one-in-five reading daily.

Children at Busy Bees are reading at least four stories each day, supported by story times and book-rich learning designed to nurture early literacy skills and a life-long love of reading.

Jenny Shaw, academic

lead researcher and developer at Busy Bees, said: "Every day in our Rugby nursery, we see how a simple story can capture a child's curiosity."

"The new figures highlight a concerning national trend and we know that to reverse it, we must ignite that reading spark long before a child reaches primary school."

"We're committed to helping families enjoy reading again and recognise the lasting impact it can have on a child's academic journey. We're inviting families and carers to join in and rediscover the joy of reading at home - even just five to 10 minutes of reading together can spark a love of reading, nurture the parent and child bond and support children's emotional wellbeing."



Storytelling sessions at Busy Bees nursery aim to spark a love of reading. s



A project aims to explore modernising and reconfiguring Rugby Art Gallery and Museum. s

Museum rejig plan

by Andy Morris
andy.morris@bullivantmedia.com

AN AMBITIOUS project to explore modernising and reconfiguring Rugby Art Gallery and Museum has been launched by Rugby Borough Council - and residents and visitors are being invited to help.

Opened in 2000, the venue houses the borough council's art gallery, museum and visitor centre plus the county library.

Accredited by Arts Council England, the venue welcomes more than 100,000 visitors each year.

The council says the project - subject to feasibility studies and funding - could make the building more accessible, improve environmental performance and create flexible new spaces to better showcase collections, host events

and deliver cultural programmes. The plans would also help safeguard heritage assets

The museum has begun an audience survey to understand how people use the building, what they value most, and what improvements they would like.

The survey asks what the venue does well, what could be improved, what might be missing and how the building could work better.

Feedback will help inform options for reconfiguring the building to meet changing needs.

Rugby Art Gallery and Museum has commissioned PRS Architects to undertake the work.

Councillor Maggie O'Rourke, Rugby Borough Council spokesperson for partnerships and wellbeing, said: "Rugby Art Gallery and Museum is one of our town's cultural jewels. For 25 years it has welcomed residents, families, schools and visitors to explore art, heritage and learning."

"We want to make sure it remains vibrant, inclusive and fit for the future. This project gives us the opportunity to reimagine how the building works, improve its sustainability and create spaces that are even more welcoming and accessible. Most importantly, we want our community to help shape that vision. I would encourage everyone to take part in the survey and tell us what matters most to them."

Her Liberal Democrat counterpart Coun Neil Sandison said: "Rugby Art Gallery and Museum sits at the heart of our community life. As we look to the future, it is vital that the building reflects modern expectations. This is an exciting opportunity to build on what already works well, and make it even better. We look forward to hearing from as many people as possible."

People can visit www.rugby.gov.uk/w/modernising-ragm or drop into centre for more information and to complete the survey.

GODIVA CARPETS ARE OFFERING

UNBELIEVABLE SAVINGS

BEST EVER CARPET & FLOORING SALE IS NOW ON

THESE SAVINGS ARE JUST TOO GOOD TO MISS!!

SAVE £££'s and £££'s and £££'s

EXTRA 10% OFF ALL STOCK • OVER 300 ROLLS IN STOCK

Fantastic and huge range of beautiful Carpets and Flooring to choose from, and at prices to suit every budget
Godiva Carpets, a local family business, have been carpeting the homes and businesses in Coventry since 1953

GODIVA CARPETS LTD Argyle House, Collingwood Road, Earlsdon, Coventry CV5 6HW. Tel: **02476 551200**











GODIVA CARPETS

A family business trading since 1953

Visit our online store www.godivacarpets.co.uk



ALLESLEY OLD ROAD SPON END
HEARNSALL COMMON
ALBANY ROAD
WE ARE HERE

OPENING TIMES: 9AM - 5.30 PM MONDAY TO SATURDAY. CLOSED ON SUNDAYS.

Violent burglars were caught after car chase

by **Andy Morris**
andy.morris@bullivantmedia.com

A PAIR of violent Coventry robbers have been jailed for two 'terrifying' armed raids.

Matthew Tennant and Kevin Swigler targeted two houses in August, breaking in and threatening the occupants with weapons.

In the first offence, the pair smashed a window and threatened a man with a crowbar and hammer, forcing him to give them his car keys.

Hours later, the duo forced their way into another house, threatening the occupant with a handgun. They stole items and fled.

Shortly after, police firearms offic-

ers spotted the pair in a suspected stolen car in Raglan Street. The car failed to stop and led police on a chase towards Brook Close.

Hitting a dead-end, the pair were arrested and the handgun found. Forensics found it was a plastic pellet-firing 'BB gun' modified to look like a real firearm.

Tennant, 37, and Swigler, 40, were sentenced at Warwick Crown Court for nine-and-a-half years each, for aggravated burglary, robbery and theft from a motor vehicle.

Det Sgt Jay Aston, from Coventry CID, said: "The level of violence and intimidation shown in this case is truly shocking. These incidents will have been terrifying for all involved, and targeting people in their own

homes with a firearm is an act of utter cowardice. Thankfully, neither of the people they targeted were seriously injured, though the psychological impact of these crimes cannot be underestimated.

"Our officers acted swiftly to intercept and arrest these dangerous individuals and the officers involved can be rightly proud of their efforts.

"PC Sarah Doran worked tirelessly to build the case against these two and the high standard of her investigation was instrumental in securing these charges and convictions.

"Violent crimes like this have no place on the streets of Coventry and we will continue to pursue anyone who thinks they can get away with this type of offending."



Matthew Tennant. s



Kevin Swigler. s



Police would like to speak to this man in connection with a series of knife-point threats in Coventry. s

DO YOU KNOW THIS MAN? A knife-wielding man is being sought by police after he threatened people in Coventry.

The incidents happened at premises in St James Lane at around 11pm on December 30. No one was injured.

Police have been working to identify the offender and would like to speak to the man pictured, in connection with the incidents.

Anyone with information should contact West Midlands Police on 101 or via Live Chat, at www.westmidlands.police.uk, quoting crime reference 20/112692/26.

The Electoral Commission

YOUR VOTE MATTERS
DON'T LOSE IT

Register to vote by 20 April. It's quick and easy, just go to gov.uk/register-to-vote

Scan to register

Cyclists log the miles

CYCLISTS across Warwickshire pedalled an impressive 67,500 miles this winter – close to three times the circumference of the globe.

In December and January, residents were out in force on their bikes as part of Love to Ride's Winter Wheelies campaign, which encourages safe winter cycling.

In total, 414 riders from 42 workplaces took part in Warwickshire, and logged a collective distance of 67,500 miles over 6,367 individual trips.

Winter Wheelies is an all-inclusive challenge that welcomes both seasoned riders and those who are less experienced, or even people new to cycling.

Riders had access to quick courses and a wealth of tips and informative articles to help boost their biking confidence.

Participants received personalised emails to help them overcome barriers and to guide them toward riding in a winter wonderland.

Warwickshire County Council is in the third year of its partnership with Love to Ride, giving residents, businesses and community groups access to the best rewards and resources that encourage cycling for travel, and not just for leisure.

Visit www.lovetoride.net/warwickshire to find out more about future Love to Ride events.



by **Andy Morris**
andy.morris@bullivantmedia.com

A NEW charity-run cafe for people with hidden communication difficulties is set to open in Rugby.

The Aphasia Cafe will aim to offer a supportive and welcoming space for people affected by communication difficulties.

Delivered by the charity Aphasia Support, the initiative supports people living with aphasia – an invisible disability caused by damage to the brain.

Aphasia affects a person's ability to speak, read, write and communicate – often as a result of a stroke – and can have a profound impact on everyday life.

The charity's newest group, in Rugby, has been championed by

residents to help fill a much-needed gap in support for people with aphasia and their families.

Supporters include Rugby resident Catherine Cope, who said: "Jim Buckley, my incredible dad, was living with aphasia when he died.

Frightening

"Aside from all the other complications and hurdles following a stroke, losing your ability to speak is huge. It's frightening, frustrating and very cruel. My dad had no support. It was a difficult time.

"That's why I'm passionate about bringing Aphasia Support to Warwickshire – creating a space where people can come together, share experience and feel less alone."

Last year, Catherine embarked on a sponsored swimming challenge, raising more than £2,000 to help fund the service.

Since then, the charity has been working with a group of local residents to shape its support.

More than 430 people are estimated to be living with aphasia in the Rugby area.

James Major, chief executive of Aphasia Support, said: "We are so grateful for the outpouring of support we have received from the local community.

"Our new Rugby Aphasia Cafe is a much-needed space where people affected by aphasia can feel understood, supported and connected.

"Thanks to the dedication of local champions, and valuable input from residents, we are proud to be launching a new service which offers long-term support in the heart of the community."

The charity's Rugby Aphasia Cafe is set to launch this spring.

Sessions will be led by a qualified speech and language therapist and

supported by fully trained volunteers.

The group will offer tailored communication support, conversation practice and opportunities to build confidence.

Paul, who attends an existing group, said: "By yourself, first of all you are lost, you are not who you were, everything takes such a long time.

"The group has lifted up all parts of my life and helped me move forward after my stroke. Everyone made a massive difference. It's helped me feel 100 per cent better – more independent and confident."

Anyone living with aphasia is invited to attend Aphasia Support's information event at Willoughby Village Hall, at 1pm on Wednesday.

People can call 0300 102 3500 or email info@aphasiastupport.org, by Monday, to register for the free event.

Residents champion borough's new support group cafe

Can Anyone help?

On behalf of the Dutch State, we are doing a heir research regarding:

- **Mr. Russell Richard Carpenter**
- Born at 23 December 1955 at Maternity Home, 133 Monroe Devis, Tiddington
- Passed away at 17 September 2023 in Eindhoven (Netherlands)

The reason for the investigation is that when this person passed away there was an inheritance left.

But unfortunately there was no family member known to contact about the death of Mr. Carpenter.

In these cases we get orders to search for living family members to settle the inheritance.

Additional information we found in the past months is that:

- His father was Russell Charles Carpenter
- His mother was Peta Yvonne Jones (born on August 24, 1926 in Coventry District and passed away in 1985 also in Coventy District)
- They married in June 1955 and at that time they lived at 7 Warwick Road, Kenilworth
- It seems they got a second child: Christopher C. Carpenter, born in June 1958.
- Petra Yvonne Jones already was married before (in 1948) with Mr. Kenneth Hill.

In the past months, there has been a lot of investigation, but couldn't find any living family member so far.

If you think you can help please make contact with Mr Jobert Van Kempen

Jobert van Kempen

JARK B.V.
Bloklandstraat 95
NL-3036 TE Rotterdam
The Netherlands

M: +31 10 2307 925

E: jkempen@jark.nl

W: www.jark.nl

Special Family Announcements



Births, Engagements, Weddings, Anniversaries, Happy Birthdays, Congratulations or sadly Deaths and In Memory Announcements can all be placed in your **Observer** to appear in printed newspaper weekly, and online247

You can call us on **01527 588688** or email details to us (including photograph if desired) with your telephone contact details and we will call you back to confirm cost **reception@bullivantmedia.com**

Prices start from just **£15** (inc Vat)



Coun Luke Cooper



Coun Scott Cameron

Reform pair opt to defect to join new party

TWO Warwickshire Reform UK councillors have defected to a newly formed far-right party.

Coun Scott Cameron, Warwickshire County Council's Coleshill South and Arley representative, and Studley representative Coun Luke Cooper have joined Restore Britain.

The new party was formed at the beginning of February by former Reform UK MP Rupert Lowe, who was suspended after allegations he made threats against then chairman Zia Yusuf.

Mr Lowe initially set up Restore Britain as a "political movement" last March but now says it will be a national political party.

Coun Cameron and Coun Cooper's proposed move follows the news that seven former Reform UK councillors on Kent County Council had joined Restore Britain.

WCC leader Coun George Finch confirmed he had removed the Reform UK whip from the two councillors.

He said: "Coun Cameron and Coun Cooper have indicated that they are planning to defect to Restore Britain. In these circumstances, it is not appropriate for them to continue to represent Reform UK or sit within our group."

"Reform UK in Warwickshire is here to deliver for residents - not to indulge in stunts designed to create headlines at the expense of local colleagues. I will not allow the hard work of our councillors and volunteers to be undermined."

A Reform UK spokesman added both councillors had been expelled from Reform UK with

immediate effect.

The spokesperson continued: "We are disappointed that they have betrayed their electors and the mandate they were given in order to become affiliated with a movement that is not even registered with the Electoral Commission. Reform UK has a zero tolerance approach to those that plan to betray our hard working members that got them elected in the first place."

"Reform UK is the only realistic chance of fixing broken Britain and getting rid of the two party system."

Coun Cameron and Coun Cooper have been approached for comment.

It follows hot on the heels of Reform's Warwickshire County Council chairman Edward Harris's resignation in January after being exposed as a "rogue landlord".

He was found to be illegally running two unsafe rental properties in Staffordshire. Tamworth Borough Council (TBC) issued closure notices on the homes after discovering "multiple serious safety failures", including a lack of central heating and hot water, no working fire alarms, inadequate cooking facilities and unsafe access to outdoor areas.

Coun Harris resigned from his position as chairman and also the Reform whip and sit as an independent councillor while the matter was being looked into.

Tamworth Borough Council said it had issued two emergency prohibition notices after finding tenants living in unsafe conditions.



WCC leader George Finch, pictured with Reform UK leader Nigel Farage, said: "Reform UK in Warwickshire is here to deliver for residents - not to indulge in stunts designed to create headlines at the expense of local colleagues."

Planning for Spring

with the garden lovers' garden centre

Harefurlong Nurseries

www.farnboroughgardencentre.co.uk

A traditional garden centre that focuses on providing quality plants, garden products, homeware & Gifts

GARDEN SEEDS

SEED POTATOES

SUMMER BULBS

Treasured Teddies

AT FARNBOROUGH GARDEN CENTRE

TEDDY LOVERS
Come & visit our Treasured Teddies shop & see our huge range of bears, Cuddly collectables & furry friends including loveable limited editions and everyday huggables

On A423 Southam Road, Nr Farnborough, Banbury OX17 1EL
Tel: 01295 690479

OPEN SIX DAYS A WEEK
Tues-Sat 9.00am-5.00pm
Sun 10.30am-4.30pm
Open Bank Holiday Mondays

A world of Choice

WHERE THINGS FOR YOUR GARDEN WON'T COST YOU THE EARTH



LEFT: Forging a future in sculpture.

RIGHT: The programme uses emerging technologies such as VR.

BELOW RIGHT: Students at Keresley Grange Primary are each making a fired clay brick prototype that tells us about the person who made it. Pictures by Andrew Moore.



Helping shape understanding

PUPILS in Coventry are being taken on a creative journey by sculptors who have taken up artist residencies at schools.

Pupils at Keresley Grange Primary and Coundon Court School are researching, designing and developing sculptural artwork for their school or local environment as part of Pangaea Sculptors' Centre's six-week pilot programme 'A 3D - 5D Learning Revolution: Sculpture as a Tool for Wider Learning'.

The programme, which tests how sculpture-led, cross-curricular learning can connect creativity, sustainability and emerging technologies such as AI, VR and 3D scanning, takes pupils from research and design through to the development of a site-specific sculptural artwork.

At Keresley Grange Primary, artist Joanne Masding is working with Year 5 and 6 pupils exploring Coventry's heritage as a place of brick making.

Students are each making a fired clay brick prototype with coloured patterns and stamped text that tells us about the person who made it - their heritage, identity and hopes for the future.

Lucy Mebarki is working with pupils at Coundon Court to explore the overlooked objects in everyday life.

Students begin by drawing and modelling personal objects in clay, before visiting Compton Verney gallery in Warwickshire to explore contemporary sculpture.

They then use 3D scanning and digital tools to reimagine their

objects as potential public artworks, developing proposals that respond to their school environment.

Lucy Tomlins, Founding Director of Pangaea Sculptors' Centre, said: "While sculpture provides the anchor, the programme integrates technical, digital, environmental and civic learning, offering an inclusive and highly engaging model for a wide range of learners."

"By working closely with teachers, pupils and industry partners during this pilot phase, we are able to test what works in real school settings; how artists and teachers collaborate most effectively, which skills and approaches have the greatest impact and how traditional making and digital technologies can be integrated meaningfully."



Wilkes

Helping You Resolve *Inheritance* Disputes.

Straightforward and compassionate legal support for Will & estate disputes.

Need *legal* guidance? Contact us for expert advice today.

0121 233 4333
wilkes.co.uk

Your legal partner for all things in *life*.





Afternoon tea in aid of military charity

Tricia Davis and Stuart Esworthy hope to hit the right note with their fundraiser. s

by Andy Morris
andy.morris@bullivantmedia.com

FUNDRAISERS are hoping to hit the right note by joining with local musicians for a musical afternoon tea in aid of a military charity.

Rugby Rotarians will host the event, which will feature musical entertainment with a foodie theme served up by Rugby Operatic and Musical Society (ROAMS).

Organised with The Rotary Club of Rugby and Rugby Masonic Lodge, the event will raise funds for Fisher House, which provides a sanctuary for the families of mili-

tary patients receiving treatment at Birmingham's Queen Elizabeth Hospital.

The Fisher House Foundation also operates the Hero Miles program, which uses donated frequent-flyer miles to bring family members to the bedside of injured service personnel; and the Hotels For Heroes program, which uses donated hotel points to enable relatives to stay near medical centres for free.

The charity also manages a grant program that supports other charities and scholarship funds for military children and spouses and children of fallen and disabled veterans.

Rotarian and ROAMS member Tricia Davis said: "To support our districts food themed project in March we were looking for a fundraising event as well as our community service. I am a longtime member of ROAMS so when the chairman asked me when the society could do a concert for Rotary, it seemed ideal to combine the two ideas of food and music.

"The charity is a wonderful example of service for people, which is what Rotary is all about."

ROAMS chairman Stuart Esworthy said: "Fisher House is the centre of excellence for military medicine in the United Kingdom so families do not have to trav-

el hundreds of miles to be with their loved one. We are pleased to partner an afternoon tea with Rotary and the Rugby Operatic and Musical Society in support of this and other worthy causes."

The proceeds will also benefit other Rotary-supported charities, including Shelterbox, a local women's refuge, and refugee children in Rugby.

The musical afternoon tea will offer the chance to win one of three luxury food and drink hampers.

It will take place at Arnold House, in Elsee Road, on March 29, from 2pm to 5pm. Tickets cost £25 and are available by contacting Tricia, on 07949 155302.

Learn how to be a clown



The Percival Guildhouse. s

CLOWNING around will be encouraged at a one-off workshop at Rugby's home of adult learning.

The Percival Guildhouse will urge guests to unleash their inner fools at a workshop in clowning in physical theatre and improvisation on Saturday, March 7.

The event will look at what it means to be a 'fool', and how that philosophy can be applied to performance and to how people approach their daily lives.

Also on offer at the St Matthews Street venue that day, are craft workshops in embroidery on postcards and macramé; art in the form of super realism with coloured pencils; photography; a beginners' guide to Irish genealogy; and 'friends in high places, an illustrated journey about Sherpa traders, Berber tribesmen and Tibetan nomads in some of the world's most remote mountain regions.

Visit <https://tinyurl.com/bdz4n39n> or call 01788 542467 for more information. Lower fees apply for people on means-tested benefits.

OFTEN IMITATED BUT NEVER EQUALLED

While all costs are going up - OURS ARE STAYING DOWN

Due to our customer friendly services of No Door Salesmen, No Showroom and little overheads



NEW FLUSH WINDOWS

BEAUTIFUL COMPOSITE DOORS
Fully fitted
Competitive Prices



UPTO 30% OFF ALL WINDOWS



ALL PRODUCTS HAVE A 10 YEAR INSURANCE BACKED WARRANTY

BILL MOORE'S WINDOWS AND DOORS
A NAME YOU CAN TRUST

1 Brookside Close, Stratford-upon-Avon, Warwickshire CV37 9PL

01789 415171 • 07729 689239 • www.billmooreswindowsanddoors.co.uk



Coun Darren Woodiwiss (second from right) and HDC environment co-ordinator Helen Chadwick (right) with guests next to the new rural EV charger at Tugby Village Hall. s

Charging up the case for rural EV infrastructure

by Andy Morris
andy.morris@bullivantmedia.com

ELECTRIC vehicle (EV) owners in Lutterworth can power up more easily after new charging points were installed in the Harborough district.

Harborough District Council (HDC) has worked with local business PlugmeIn to install 22kW chargers – replacing less powerful 7kW units – at Station Road in Lutterworth, Orchard

Road in Broughton Astley, and School Road in Kibworth.

New chargers have also been installed at North Memorial Hall in Tugby and at the Allerton Project Visitor Centre in Loddington (which has two devices). They will be owned by the parish and community organisation.

Councillor Darren Woodiwiss, HDC spokesperson for climate change and neighbourhood services, said: “Giving EV drivers options for charging more conveniently is an important part of our climate emergency action

plan, that’s geared to cutting Harborough district’s carbon emissions. The new chargers give residents more options and convenience and we hope they will encourage others to consider making the switch to an EV.

“We also hope EV drivers visiting our district for business, tourism or other purposes will use these charging sites and perhaps spend more time in the district as a result, helping to support the local economy and keeping our air cleaner.”

The cost of using the new chargers is 43p per kWh.

They were funded by £150,000 from the government’s rural prosperity fund, part of the UK shared prosperity fund.

HDC is working with other district and borough councils, through the Green Living Leicestershire Partnership, to deliver more rural chargers across the county.

Funding has been allocated to the partnership from the government’s local electric vehicle infrastructure fund and the pooled business rates fund, which is managed by the Leicestershire Business and Skills Partnership.

Safety tips for new drivers

HELP is at hand for parents of aspiring young drivers who are set to take to the roads on their own.

Warwickshire’s Road Safety Partnership is running a webinar designed to help families navigate the learning-to-drive period, and beyond.

Taking place on Thursday, March 19, between 6pm and 7pm, the webinar will bring together specialist speakers in road safety and young driver development who will share practical advice and insights.

Research shows that newly qualified drivers are at greatest risk in their first six to 12 months on the road, particularly within their first 1,000 miles of independent driving.

The one-hour webinar will explain how everyday conversations, expectations and parental behavior can significantly reduce risk and help young drivers develop safer habits for life.

Warwickshire County Council’s transport spokesperson, Councillor Jennifer Warren, said: “Learning to drive is a major milestone and it can also be a time when young people face some of the greatest risks on our roads. Parents and carers play a vital role in shaping safe attitudes and behaviours, during lessons and after a test has been passed. This webinar is a fantastic opportunity to hear directly from experts, gain practical tips and feel more confident about how to support a young driver.

“Through the work of the Warwickshire Road Safety Partnership, we are committed to helping families understand how small actions – from positive conversations to setting clear expectations – can make a real difference to safety.”

The free online event is for parents and carers, with young people also welcome.

Visit Warwickshire Road Safety Partnership’s website for more details, and to sign up.

Questions about care? We can help

We know moving into residential care is an emotional and difficult decision with lots to think about.

With over 30 years’ experience, we can help you navigate the process of finding the right care home, so that you feel confident about the decision you make – whether that’s choosing a WCS Care home, or one outside our group that’s more suited to your needs.

If you’ve got questions about care, or one of our care homes, our Trusted Advisors can help.



Philip Rainsford



Drovers House, Rugby

☎ 07802 728447

✉ p.rainsford@wcs-care.co.uk



Westlands, Rugby
Dewar Close, Rugby

☎ 07802 728443

✉ j.rugg@wcs-care.co.uk



Josephine Rugg

Book a date with a hunt through the town streets

THE STREETS of Rugby will be transformed into an outdoor treasure hunt in celebration of World Book Day (Thursday March 5).

Rugby Borough Council has partnered with High Street Safari to bring an innovative augmented reality treasure hunt to the town centre.

Families are invited to hunt for ten 'book zones' hidden in shop windows. Using a smartphone, explorers can scan markers to see 3D book characters which leap into the real world.

Each stop features a hidden secret letter, found by taking selfies with the characters. Families who find all ten can solve the mystery word and complete the trail.

The trail aims to support the World Book Day charity's mission to improve lives through championing the enjoyment of reading.

Coun Maggie O'Rourke, Rugby Borough Council's portfolio holder for Partnerships and Wellbeing, said: "We're very excited to work alongside High Street Safari and bring this

trail to Rugby residents.

"This is a great opportunity for individuals and families to get involved with World Book Day in an immersive and creative way, shaping the future generations view on reading in a positive light."

Her Liberal Democrat counterpart Coun Neil Sandison said: "This interactive experience allows young people to engage with reading and books in a modern way."

"I wish you the best of luck in completing the trail adventure."

Stephen Blackwell, Project Director at High Street Safari, added: "By bringing these characters to life in 3D, we're helping children engage with reading in a way that feels modern and exciting. We're proud to work alongside World Book Day to put books at the heart of the community."

The Rugby World Book Day Treasure Hunt will run to March 15. No app download is required, just a smartphone with a camera.

Visit Rugby Visitor Centre at Rugby Art Gallery and Museum to collect trail guides.



Staff were treated to live performances, including music from Grease.



Raising a glass to the end of 'peak'.

Celebrating yet another bumper year

HARDWORKING staff at a Rugby logistics warehouse have celebrated completing their company's busiest trading period for another year.

Hundreds of team members at Amazon's Rugby centre were treated to a celebratory event at the Heart of England in Coventry to mark the end of 'peak' - the weeks surrounding Christmas when customer orders reach their highest levels of the year.

The company employs thousands of extra seasonal colleagues across its network, alongside permanent team members, to ensure packages arrive on time.

The post-peak celebration has become an annual tradition, giving teams the opportunity to come together and reflect on their achievements.

Employee Jenifer Arakkal, who attended the celebration, said: "The party was a great way to celebrate everything we accomplished together during our busiest time of year."

"There's a real sense of camaraderie here, and it's brilliant to work alongside such a dedicated team. I'm looking forward to seeing what the rest of 2026 brings."

Alex Barrett, Site Leader at Amazon in Rugby, said: "While many businesses are quietening down for the holidays, our teams come together to deliver for our customers locally and around the UK."

"This celebration is our way of saying thank you to every single person who played their part in making Christmas special for our customers. It's been fantastic to bring everyone together to celebrate what we've accomplished as a team."

OUR BIG SALE IS STILL ON

INFLATION EVERYWHERE - BUT NOT AT CARPET MILL!

Everything is going up in price, the same for Carpets and this is why it pays to go to Carpet Mill. Manufacturers of yarn and other materials for making carpets have all had price rises and some manufacturers are busy changing their specifications to many ranges to compensate. They also get surplus rolls that they cannot sell to the big stores as they don't have enough stock left to service them.

Therefore, we are buying those rolls at a **FAT DISCOUNT** and passing it on to **YOU**.

Everything Reduced
BE QUICK

BRAND NAME CARPETS AT LOW LOW PRICES

From quality Axminster to budget cord

We are recommended for our low prices, quality service and extensive range throughout the Midlands. There are no R.R. prices on carpets, so if others give 50% offers or sales discounts, is it 50% off their normal high prices. ALWAYS compare with Carpet Mills normal prices!!!!!!

CARPET MILL

CROMWELL STREET (OFF RED LANE) COVENTRY CV6 5EY TEL: (024) 7666 1985

SOME CUSTOMERS TRAVEL MILES - YOU DON'T HAVE TO - WE ARE HERE

www.salecarpet.uk

Care home earns impressive rating

A CARE home run by the Royal British Legion in Southam has been rated outstanding.

Galanos House, which currently cares for 97 former members of the armed forces community, was praised by the Care Quality Commission (CQC) as being "effective, responsive, well-led and safe", during a recent inspection.

Amanda Lyndon, the CQC's deputy director for the Midlands, said: "When we inspected Galanos House, we found a positive culture which allowed people to live full, rich and active lives."

"It was wonderful to see how staff brought fun and laughter into the home and enabled people to remain active members of the local community, taking part in events and meeting up with friends and family. People were encouraged to take positive risks to maintain hobbies and activities they enjoyed in the past, helping them live with as few restrictions as possible."

"Relatives unanimously described staff as immensely kind, caring, friendly and welcoming."

"The atmosphere inside the home was warm and people told us they valued the friendships they'd

made with other people and with staff."

Ms Lyndon added, residents said they felt safe living in the home and that staff were aware of any subtle changes in behaviour which showed if residents were worried or anxious, and would report any concerns to their line manager.

Staff also recognised the importance of independence, choice and control in ensuring residents had a good day.

They help residents to maintain independence in some aspects of their care, if they want to, such as being able to manage their own medicines, and residents were also given complete choice and control of their own personal space.

The report went on to say staff were supported by a team of more than 50 volunteers who had the same training and recruitment checks so they could engage with residents safely.

Ms Lyndon added: "Overall, staff and managers should be incredibly proud of the care they provide at Galanos House and the positive outcomes this has on the people they look after."

The report will appear on the CQC website.



Marvel by name: Jack works out in the gym for the first time. s

A Marvellous day out

by Philippa Mingins
 philippa.mingins@bullivantmedia.com

A 92 YEAR-old Leamington care-home resident proved he was more than just Marvel by name when he hit the gym for the very first time.

Jack Marvel has led an incredibly active life and achieved many impressive fitness feats before coming to live at Priors House.

He was a keen runner throughout his life, pounding the pavements four evenings per week and often taking part in

half marathons and 10k races. He ran for athletics club Birchfield Harriers and kept up the activity until he was 80.

Walking and running have long been Jack's favourite type of exercise. On his 60th birthday, he completed a 200-mile coast-to-coast walk in the north of England with friends. Jack was no stranger to long distance walking and recalls a time he walked over 20 miles across the Derbyshire Peaks.

Jack also kept fit through gardening and tending to his allotment, which helped him build and maintain strength and muscle mass.

Even after a stroke, at the age of 92, Jack was determined not to slow down

too much and keeps active at Priors House by walking in the garden daily with his wife Marlene.

After telling the Priors House team he would like to visit a gym for the first time, staff got to work organising a special afternoon out for Jack at Nuffield Health Warwick Fitness and Wellbeing Gyms.

During his visit, Jack used the treadmill, exercise bikes, rowing machine and strength linear leg press.

He said: "I wanted to discover what I was capable of and make my legs stronger. I had never been in a gym but I really enjoy it. You're never too old to try something new and won't know what you are capable of until you try."

INTERNATIONAL METALS & CABLE RECYCLING LTD

We purchase all Ferrous and Non Ferrous Metal Batteries and Cables

Collection Service Available

Long Marston Road, Long Marston, Stratford Upon Avon, Warwickshire, CV37 8AQ

01789 721 288

david@imrltd.co.uk

Open Mon/Fri - 8am - 5pm

THE BED FACTORY

Trading since 1989
3 floors full of beds
(We are bigger than we look)

Attention Arthritis Sufferer's

Revealed The Hidden Secret Of How To Massively Reduce Pain And Discomfort, Without The Need For Expensive Drugs Or Surgery!!!!

6 TYPES OF ELECTRIC ADJUSTABLE BEDS NOW ON SHOW SOME WITH MASSAGE

Mammoth Centre of Excellence
We at the Bed Factory Leamington are proud to have been awarded by Mammoth the title of Centre of Excellence. This is due to the fully trained staff and the display of the complete range of the new Mammoth Medical grade mattresses. We are recommended by Chiropractors and Doctors for our range of pressure relieving mattresses.



CHARTERED SOCIETY OF PHYSIOTHERAPY



SALE NOW ON

Look at our trustpilot reviews at uk.trustpilot.com

Mammoth new range of mattresses now on show.

For the last decade Mammoth has built a reputation as a leader in health and wellbeing – the brand that brought Medical Grade™ foam and PostureCells® to the mattress market. Scientific testing, health award wins and an exclusive partnerships with the Chartered Society of Physiotherapy have made it the go-to name for those who need genuine comfort, pain relief and a great night's sleep.

Born out of healthcare and based on the pressure relieving materials used in medical beds on spinal injury units, Mammoth's secret ingredient is Medical Grade™ foam – a naturally cooling, pressure-relieving but supportive material that's shown to be far superior to standard memory foam.

Unlike memory foam, Medical Grade™ foam doesn't require heat to become pliable, nor does it lock sleepers in place where they may seize up with aches and pains. Instead, Medical Grade™ foam instantly contours to the body and provides a supportive yet flexible surface that aids natural spinal alignment.

This is complemented by Mammoth's innovative PostureCells® – independently moving castellations in the foam that provide even support but reduce partner disturbance. Importantly, the air channels between each PostureCell® also serve to wick away the moisture and allergens that typically build up through the night.

Testing excellence

Under laboratory conditions, Medical Grade™ foam mattresses have been found to provide **46% greater pressure relief** and **69% faster cooling** than standard 50kg memory foam. For sleepers that means:

- Improved circulation through the night
- Faster recovery and healing
- Reduced overheating
- Reduced perspiration
- Improved hygiene

Determined to go further, Mammoth also put its mattresses through testing at Northumbria University's Centre for Sleep Research. In clinical trials it was shown that Mammoth's mattresses helped sleepers **fall asleep 29% quicker**, experience a **7% increase in sleep efficiency** and report a **21% increase in sleep enjoyment**.

Award wins

Mammoth's unique technologies helped the brand to win a Bright Ideas in Health award for pressure relief and temperature regulation – awards usually reserved for teams working within the NHS.

These impressive results are among the reasons why Mammoth has become the go-to name for elite athletes and professional sports stars – as can be seen through partnerships with the Rugby Players' Association, British Athletes Commission and Professional Cricketers' Association over the years, as well as relationships with Premier League football teams and Olympians.

Combatting back pain

The unique properties of Mammoth's sleep and comfort technologies have made it the go-to mattress range for health professionals. By improving pressure relief, enhancing postural support and increasing circulation, physiotherapists in particular love the positive patient outcomes offered by Mammoth. With over 50% of adults now estimated to suffer from back pain in their lives, it's never been more important to invest in the very best sleep surface to ease pain and discomfort.

Want to make a healthy choice and upgrade the quality of your sleep? Try the Mammoth Bed Test Centre at The Bed Factory now.

Leamington's Largest Independent Bed Retailer

We can supply a large range of beds in 1 to 2 weeks - 3' Single Beds also available - WE SUPPLY WHEN OTHERS FAIL

139 Regent Street, Royal Leamington Spa, CV32 4NX

01926 422404

sales@thebedfactory.co.uk
and www.thebedfactory.co.uk



Music Matters

Festival's loss means we must support local acts

MUSIC MATTERS!
Pete Chambers BEM writes for The Observer

Regarding the news that Coventry's Godiva Festival has been put 'on pause' this year, my readers will know how much I value the festival.

It was ours and stood as a valuable statement and commitment to our precious cultural offering. The momentum of that festival had built up over the years, and helped keep Cov on the live entertainment map.

Money may be too tight to mention, but this to me is beyond just money. Of course, there are those who over the years feel that local music has not been a represented enough at Godiva, or that certain genres of music have been neglected. You can't please all the people all the time of course, but I think that its heart was in the right place and Godiva Calling was always well represented.

Whatever happens down the line, I hope that ultimately local artists get a good look in.

We are promised Godiva In The City this summer, so let's make that something to be proud of and hope that the festival returns again in its glory sometime soon.

Coventry singer-songwriter **Reiss Pinder** has announced the release of his latest single, *By Your Side* — a rhythmic, 12-string driven post-love song rich with imagery and heavy on heart.

After close to a decade playing in bands across the country, Pinder now steps forward with a sound and voice entirely his own, taking his songs and stories to any stage that will hold him.

Drawing inspiration from both ends of the songwriting spectrum — the poetic grit of Dylan and MacGowan, the stark honesty of Cohen and Lennon — Pinder finds himself meeting madly somewhere in the middle.

By Your Side captures the emotional afterglow of love with vivid lyricism and textured acoustic energy. Built around the bright pulse of a 12-string guitar, the track delivers both rhythmic drive and reflective depth, marking a defining moment in Pinder's evolution as a solo artist.

If you fancy a limited edition copy of the first **Specials** album complete with an exclusive seven-inch single, you had

better hurry as Rough Trade Records have just released a limited edition of 2,000 copies of the said package.

The included single is a version of 'Gangsters', the band's first single, and it was with Rough Trade where it all started with a limited edition that helped get the band a contract with Chrysalis Records — and thus 2-Tone Records was born.

The set is part of a 50 year celebration branded 50 Records for 50 Years — one for each year that Rough Trade has been open, featuring an exclusive vinyl pressing, with special bonus material: unique liner notes, stories, and fresh interviews.

The liner notes on *The Specials* album are written by the 2-Tone Godfather Jerry Dammers and give a nostalgic look at those early days in Coventry when the album was being conceived.

Starting with 1976-1985, other titles include Patti Smith, The Clash, Dr Alimantado, Young Marble Giants, Brian Eno and David Byrne, Cabaret Voltaire, Cocteau Twins, Sade and The Fall.



Reiss Pinder.

Browse the Winter Edition of Seasons



As winter's chill begins to settle across our three counties, there's a certain kind of beauty that only this time of year brings.

This, then, feels like the perfect moment to launch **'Seasons'** – our brand-new glossy magazine, created to celebrate the people, places, and stories that make Worcestershire, Warwickshire and the West Midlands such a wonderful part of the world

Pick up a copy locally for free, or simply browse on line www.seasons-magazine.com



For even more details call **01926 317118** or **0121 270 2295**

'Seasons' magazine is brought to you by your local 'Observer' Newspaper team

Seasons

Each quarter, *Seasons* will follow the rhythm of the year – from the crisp calm of winter to the first buds of spring, the brightness of summer and the richness of autumn – highlighting the very best of local life, from independent shops and community ventures to countryside walks, home inspiration, and hidden gems worth discovering.

Our first Winter edition is all about warmth – in every sense of the word. You'll find features that reflect the spirit of the season: comforting food, inspiring people, caring places, and ways to make the cold months glow with local charm.

This magazine is for you – our readers, neighbours and local businesses – and we can't wait to share the year ahead with you, one beautiful season at a time.



Affordable home care for all.

We are the most experienced all-round Home Care provider in the UK and know how important this decision is. We also know how life changing it is when approached the right way.

We have provided Home Care services for over 80 years, giving companionship, support and inspiration to thousands. We are trusted by healthcare professionals, case workers and private clients to deliver affordable Home Care for all.



“Thank you for everything that all your staff and carers do for me. You really enriched my life, and I gained more strength in the knowledge that someone was caring for me every day. I am indebted to all involved in my wellbeing over the last 6 years or so.”

Our in-home services

- + Personal Care
- + 24hr Care
- + Medication support
- + Complex Care
- + Live-in Care
- + Companionship and Wellbeing
- + Respite Care
- + Paediatric care
- + Palliative & End-of-Life
- + Support for people living with Dementia

prestige-nursing.co.uk | 024 7510 6669
coventry@prestige-nursing.co.uk



Can you spare an egg?



Easter egg donations are wanted at The Myton Hospices. s

EASTER egg donations are wanted, for a fundraising eggs-travaganza at The Myton Hospices.

The charity is planning a series of tombolas at supermarkets, shopping centres and other community locations across Coventry, Rugby and Warwick and will use donated easter eggs as prizes to help raise vital funds for local hospice care.

Previous easter egg tombolas have raised thousands of pounds to support Myton's work. In 2024 alone, thanks to the generosity of residents, businesses, schools and community groups, the initiative raised almost £4,000, which could fund a hospice bed at Myton for just over a week.

This year, the charity hopes to build on that success and is encouraging the public to get involved to ensure there are enough prizes available, to raise as much money as possible.

Rachael Ryan, community fundraising manager at The Myton Hospices, said: "At this time of year, you can't do your food shop without seeing shelves full of chocolate treats, so why not pop an extra egg into your trolley, donate it to Myton and help raise vital funds for your local hospice? Donating an egg is a simple gesture that helps Myton continue to support local families when they need us most."

Donations of easter eggs can be dropped off at Warwick Myton hospice, Coventry Myton hospice and Rugby Myton support hub.



Eduard Fesko, Matt Western and Jerzy Boczkowski show their solidarity. Photo by Jacek Sagatowski, Embassy of the Republic of Poland. s

by **Philippa Mingins**
philippa.mingins@bullivantmedia.com

SOLIDARITY in support of Ukraine brought local leaders, diplomats, charities and residents together in Leamington.

Attendees included vice lord-lieutenant of Warwickshire Pal Singh Sanghera; deputy lieutenant of Warwickshire Simon Miesegaes; Leamington mayor Ruggy Singh; Warwick and Leamington MP Matt Western; deputy head of mission at the Embassy of Ukraine, Eduard Fesko; and chargé d'affaires ad interim of the Embassy of the Republic of Poland, Jerzy Boczkowski.

A central focus of the event was recognition of £13,500 raised by community

donations and dedicated to the purchase, preparation and delivery of ambulances for Ukraine. The vehicles will be used for emergency response and medical evacuation, providing vital, life-saving support. In addition, \$1,000 in cash donations was collected during the event itself.

Mr Boczkowski said: "Poland has stood by Ukraine since the very first days of Russia's aggression. It is inspiring to see how initiatives of the local Polish community in Leamington continue this mission, and how much they engage the wider British public in support of Ukraine as well."

Mr Fesko added: "Support like this has a direct impact on the ground. Ambulances save lives every day in Ukraine, often in the most difficult conditions. I would like to sincerely thank everyone involved

for their generosity and commitment. This kind of help makes a real difference and shows that Ukraine is not standing alone."

The programme also included a screening of *Many Cultures, One Town*, a documentary by local filmmaker Mark Ellis exploring post-war migration to Leamington after 1945 and how communities rebuilt their lives through cooperation and shared experience. A presentation by William Grow, an American volunteer on the frontline in Ukraine, provided further insight into ongoing needs in the war-torn country, and the importance of community support.

The event was organised by Belveder community interest company iwth LKQ Euro Car Parts, and supported by The Event Business.

THE JONES FAMILY JEWELLERS

**IN-HOUSE
JEWELLERY
REPAIRS**

**FINE
JEWELLERY
EXPERTS**

**CASH FOR
GOLD & SILVER**

**WATCH
BATTERIES
& RESEALS**

**WATCH
STRAPS & PEARL
RESTRINGING**

SATCHWELL WALK,
LEAMINGTON SPA
01926 882552

TALISMAN SQUARE,
KENILWORTH
01926 954271

ROYAL PRIORS,
LEAMINGTON SPA
01926 893393

WWW.TJFJEWELLERS.CO.UK



FOR APPOINTMENTS EMAIL: ENQUIRIES@TJFJEWELLERS.CO.UK

PROFESSIONAL JEWELLER
— Awards 2025 —
RETAIL TEAM WINNERS 2025

GOLD AND SILVER PRICES ARE GOING THROUGH THE ROOF

FREE VALUATION EVENT

a verbal valuation

CAN TRULY OFFER YOU

free, no-strings-attached' advice and support

1st - 28th February

2 HIGH STREET,
WARWICK
CV34 4AP

@russelllanejewellers



UPDATE YOUR INSURANCE FOR TOTAL PEACE OF MIND



Warwickshire Symphony Orchestra play a tribute concert to percussionists Huw Thomas and Sebastian Farrall on March 14.

A moving programme

WARWICKSHIRE Symphony Orchestra pay tribute to two much-loved former members with an evening of powerful orchestral works at All Saints' Church in Leamington on March 14.

The concert will open with Copland's Fanfare for the Common Man, performed as a tribute to percussionists Huw Thomas and Sebastian Farrall, both of who died last year. Huw dedicated 38 years to the WSO, while Seb played for five years.

The programme continues with Rimsky-Korsakov's Overture on Russian Themes, followed by Brahms' Violin Concerto in D Major, with the soloist, Callum Smart. The evening concludes with Beethoven's Symphony No. 7 in A Major.

The orchestra also welcomes guest conductor Richard Jenkinson,

a distinguished cellist, and conductor. Richard served as principal cellist with the City of Birmingham Symphony Orchestra and is a member of the acclaimed Dante String Quartet. He is currently musical director of both the British Police Symphony Orchestra and the Orchestra of St John, Bromsgrove.

Chris Voss, chair of WSO and violinist said, 'We are thrilled to be joined once again by Callum, who is a great friend to the orchestra and with whom we always love performing.'

'It is also important that we mark the immense contribution made by Huw and Seb with the towering piece that is Fanfare for the Common Man.'

Tickets are £15, with half-price tickets available for students and children. Booking is available through www.wso.org.uk

Heartlifting show will blow you away

The Boy Who Harnessed the Wind, RSC Swan Theatre, Stratford

FIRST a memoir, then an award-winning film, the latest reimagining of The Boy Who Harnessed the Wind is a moving, rip-roarer of a musical.

A 'school drop-out with a stroke of genius', William Kamkwamba's true story details the 2001 Malawian famine and his engineering of an electricity-producing windmill from scrap.

While Warwickshire may be wet and wild, the theatre is bathed in golden sunlight, the cast clothed in vibrant wax print fabrics, vest tops and shorts. This production, directed by Lynette Linton, adapted by Richy Hughes (book and lyrics) and Tim Sutton (music and lyrics), is a feast for the senses.

The beautiful, haunting sounds of Malawi, from traditional to reggae, uplifted and moved in equal measure. Every square inch of stage space was put to good use with dancing taking place up to the very edges, a bone-dry field revealed beneath trapdoors and the on-stage construction of a 7m high wind turbine.

Credit to lighting and video designers Oliver Fenwick and Gino Ricardo Green whose sun-drenched skies and projections of rain deluges, engineering sketches and archive TED Talk footage added

Picture by Tyler Fayose



another dimension.

The troubled father-son relationship is authentically played by Alistair Nwachukwu (William) and Sifiso Mazibuko (Trywell), and powerfully portrayed was Shaka Kalokoh's hyena, the harbinger of death, who although uttering not a word, had incredible stage presence.

With a running time of over 2.5 hours, even the youngest audience members were enthralled to the end thanks to a medley of rousing music, catchy songs and high-

energy dances - and puppet mastery on another level in the form of William's dog, designed by Nick Barnes and brought to life by Yana Penrose.

This is sure to enchant those who have read the book or seen the film, but equally so those coming fresh to this heart-lifting tale.

The production runs in Stratford until March 28, before moving to London's West End from April 25 to July 18.

Vicki Gumbley

More Than Weight Loss: How Group Support Helped Me Find Myself Again

ADVERTISEMENT

What makes a weight-loss journey truly life-changing? For me, it wasn't just the number on the scales. It was the people in the room.

What I love most about **Slimming World's** group support system is the genuine care that fills it. It's never just about weight loss. It's about sharing real experiences, celebrating small wins, and learning from tough weeks without judgement. There's something powerful about being surrounded by people who truly understand how you feel. That sense of belonging is rare — and it changes you.

Before I found that support, being overweight had taken a huge toll on my mental health. My confidence didn't vanish overnight; it eroded slowly. My self-esteem crumbled until I barely recognised myself. I'd look in the mirror and feel disconnected from the person staring back. I tried to brush it off, to laugh and pretend it didn't matter, but inside I felt deeply unhappy.

Weight doesn't just sit on your body — it can weigh heavily on your mind and spirit too.

Losing the weight hasn't simply changed how I look; it's brought me back to myself. Bit by bit, I've rebuilt the confidence I thought was gone forever. It's taken time, patience, and resilience, but I finally feel like me again.

The difference shows up in everyday moments.

Tying my shoelaces without getting out of breath. Walking upstairs without dreading the climb. Choosing clothes because I love them, not because they hide me. These small victories mean everything. They're daily reminders of how far I've come.

I used to dread having my photo taken and avoided videos at all costs. I'd position myself carefully or step out of the frame altogether. Now, I no longer feel the need to shrink. I'm comfortable in my own skin. Travelling, socialising, being active — these are joys again, not anxieties to manage.

Most importantly, I've stopped letting my weight define my life. I feel lighter in every sense — freer, more confident, more present.

I couldn't have done it without my wonderful husband, Darren, our dog **Ozzy**, and an incredible circle of friends. Their love and encouragement have meant everything. Darren regularly tells me how proud he is, and **Ozzy** is certainly enjoying the extra walks. Having them beside me has made this journey even more meaningful.

Reaching my target on 5th December last year was a moment I'll always treasure. It wasn't just about a number. It was proof that I had kept going — even when it felt slow, even when it felt hard.

If I could offer one piece of advice, it would be this: keep going. Stay focused, trust the process,

and most importantly, keep going to group. The accountability, support and friendship you find there can make the difference between giving up and pushing through.

The habits that keep me on track are simple but powerful. Planning ahead is key — making sure meals and snacks are ready so I'm never caught out. Batch cooking has become part of my routine. The healthy habits I once had to think about now feel natural.

Staying active has also been crucial. Whether it's running, walking **Ozzy**, or simply getting outside, movement keeps me positive and grounded. It reminds me what my body can do rather than how it looks.

But perhaps the biggest transformation has been internal. I've learned to be kind to myself. If I have an off day, I don't let it spiral. I draw a line and move forward. That mindset shift has been life-changing.

Today, I walk into a room with my head up. I no longer hope to go unnoticed. I feel capable, confident and proud. I'm more active than I've ever been — something I once never imagined saying. Reconnecting with the real me has been the greatest reward of all.

What I've learned is this: sustainable weight loss isn't about perfection. It's about support. It's about community. It's about making smarter choices without giving up the life you enjoy.

For me, this journey has been about far more than losing weight. It's been about gaining

confidence, self-belief, friendship and freedom. It's been about rediscovering the person I thought I'd lost.

And that is worth everything.



Slimming World

feel
real
good

less than
£5*
a week

Mondays

9.15am
Dunchurch Village Hall
Rugby Road,
Dunchurch CV22 6PN
Call Kelly W
07777145560

Wednesdays

9.00 am and 10.30 am
**** NEW 7.30am**
SESSION FROM
APRIL**
Rugby United Reformed
Church, CV22 5AD
Call Maz
07805 191429

Thursdays

5.30 pm and 7.00 pm
Christ Church,
Brownsover
CV21 1QG
Call Kelly T
07806 673606

Fridays

8.00 am and 9.30 am
Christ Church,
Brownsover
CV211QG
Call Tina
07496 845777

Saturdays

7.30 am
United Reformed
Church
CV22 5AD
Call Maz
07805 191429

Tuesdays

8am, 9.30am, 4pm
& 5.45pm
Southam Sports &
Social Club,
Southam CV47 1PL
Call Helen
07920 164278

Wednesdays

5.30 pm and 7.00 pm
Rugby United Reformed
Church
CV22 5AD
Call Fiona
07876 450362

Thursdays

5.30 pm and 7.00 pm
Rugby Borough
Football Club
CV21 4PN
Call Kelly W
07777 145560

Fridays

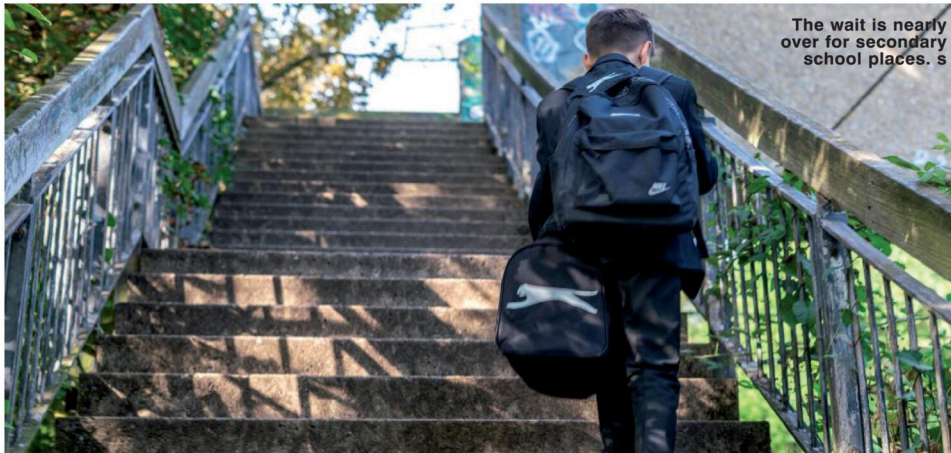
9.00 am and 10.30 am
Sacred Heart Church
Limetree Ave.
CV22 7QT
Call Mary
07799 264779

Saturdays

8.30 am and 10.00 am
Bilton Bowling and
Tennis Club
CV22 7QH
Call Kelly T
07806 673606

real food, real support, real results

*Visit slimmingworld.co.uk/offers for terms and conditions.



The wait is nearly over for secondary school places.

School places results

by **Philippa Mingins**
 philippa.mingins@bullivantmedia.com

NATIONAL Offer Day is approaching for Warwickshire youngsters headed for secondary school in September.

Families who applied on time will find out on Monday which school their child has secured a place at.

Warwickshire County Council (WCC) will again automatically accept all school place offers. That means parents and carers do not need to take any action to secure their child's place. Families should instead keep an eye out for updates directly from the school their child has been offered,

including information about uniform requirements, transition activity and term dates, which will also be available on each school website.

WCC education spokesperson Councillor Wayne Briggs said: "Starting secondary school is a major milestone and we want the admissions process to be as easy as possible for families.

"Anyone that applied by the October 31 deadline will receive an email from us following the national offer day, on Monday, March 2, with details of their child's school place and, if any parent or carer needs extra support, the admissions team are available to help."

Some families may find their child has not been offered a place at one or more of their preferred schools and, in

a small number of cases, not at any of the schools they applied for. That happens when schools receive more applications than they have places available and when other applicants better meet published admissions criteria.

All children who are not offered a preferred school will automatically be placed on the waiting list for those institutions. Waiting list positions will be available from March 16 and families will be notified if a place becomes available.

Families waiting for admission outcomes for reception places, or year 3 junior school places, will receive their offers on April 16.

Visit www.warwickshire.gov.uk/secondaryplace for more information.

Healthy online use for young people

THE EFFECT of social media and artificial intelligence (AI) on young people is the focus of Warwickshire's director of public health.

Dr Shade Agboola's annual report focuses on wellbeing and how young people interact with social media and AI - highlighting benefits and emerging harms.

Dr Agboola said: "This year's report has been delivered in the format of a blog, shaped with children and young people themselves, to make the content engaging, accessible and easy to share.

"Social media is no longer just a way for children and young people to connect, it influences their health, wellbeing and opportunities. It is important we hear their thoughts to better understand the latest changes in the digital world."

For many children and young people, being online is a space to learn, express themselves and socialise with peers and friends.

While the report highlights the benefits of being online - such as opportunities for creativity and social engagement - it also discusses the more harmful risks, which can start from an early age. They include exposure to cyberbullying; unrealistic body image ideals; misinformation; and

harmful content; which can all negatively impact physical and mental health, self-esteem and emotional wellbeing.

One-in-three 13- to 14-year-olds spend more than four hours per day online, with risks such as grooming and radicalisation increasingly occurring through apps such as Snapchat, Instagram, WhatsApp and gaming platforms. Youngsters with mental health difficulties are twice as likely to seek advice from influencers discussing mental health, compared to young people without such issues.

People concerned about young people growing up online can read the Director of Public Health Annual Report, which provides recommendations such as helping young people learn how to better manage time online, for example by using app timers to encourage healthier amounts of online engagement, taking breaks from being online and uninstalling software or unfollowing content that is having a negative impact on their wellbeing.

People can visit www.warwickshire.gov.uk/strategy-governance-health-wellbeing/director-public-health-annual-reports to find out more.

JOHNSONS

QUALITY COACH TRAVEL

DISCOVER YOUR NEXT GREAT DAY OUT

- ✓ 'Club Class' Extra Legroom or Luxury Traveller Coaches.
- ✓ Entrance and Admission Charges included.
- ✓ Depart from 38 local Boarding Points with reserved seating.

<p>Cambridge</p> <p>Mon 16 Feb 2026 £32pp</p>	<p>Shropshire</p> <p>Tue 17 Feb 2026 £32pp</p>	<p>Bristol</p> <p>Wed 18 Feb 2026 £32pp</p>
<p>Peterborough</p> <p>Thur 19 Feb 2026 £32pp</p>	<p>London Covent Garden</p> <p>Fri 20 Feb 2026 £32pp</p>	<p>Liverpool</p> <p>Sun 22 Feb 2026 £32pp</p>

& So much more on offer!

Call our Reservations Team on 01564 510 037

BRAND NEW!

Summer 2026

Day Excursions & Express Excursion

Brochures...

OUT NOW!

Start Planning your Summer Days Out **TODAY** - so many trips to choose from with Return Coach Travel and Admissions included!

Don't Hesitate - Get Booking Today!

Scan the QR codes to view the digital copy brochures

Just for Pets

The UK's Best Rated Dog Foods In Store Now!



Years.com

Fresh dog food for your cupboard!



Available at Just for Pets!

Just for Pets Leamington Leamington Shopping Park, Tachbrook Park Dr, Leamington Spa CV34 6RH (next to M&S)
 Just for Pets Coventry Arena Shopping Park, Rowley's Green, Coventry CV6 6AS (next to M&S)
 Just for Pets Nuneaton Horeston Grange Shopping Centre, Nuneaton CV11 6GU (next to Farmfoods)

www.justforpets.co.uk

Gardeners should start to prepare for summer

Violas can add a splash of colour to an early spring hanging basket. s

by Sarah Mason
sarah.mason@bullivantmedia.com

MARCH is the month for getting the garden ready for the summer months ahead.

Sowing seeds should be at the top of your 'to do' list.

Give seeds soil that is wet and warm enough and off they go. A good rule of thumb is, the bigger the seed, the deeper it needs to be in the soil to germinate.

Some seeds can be sown direct into the ground, such as vegetables, whilst others prefer to be in seed trays and a slighter warmer environment, to be given a good fighting chance.

Spring is also the perfect time to start feeding plants but the feeding

regime needs to be tailored to the needs of specific plant types.

For young plants, grown from seed and cuttings, use a diluted, shop-bought liquid feed when the first leaves or growth show.

The same applies to houseplants or plants in pots.

For fruit trees and bushes, use potassium-rich organic feed (made from seaweed, nettles or comfrey).

Most vegetable crops benefit from regular mulching with organic matter such as homemade compost or locally produced mulch.

Brassicas and potatoes need an organic feed yearly, in early spring: poultry manure pellets, comfrey pellets and seaweed meal with some well-rotted organic matter.

For anyone looking for an instant burst of colour, a simple solution is to create a hanging basket by

mixing hardy annuals with small evergreen shrubs for all-year-round interest.

Although most baskets are planted in late spring and put outdoors, after the risk of frost has passed, they can also be filled with frost resistant flowers and plants for colour over winter and early spring.

Favourites

Hardy favourites include pansies, violas, primulas and winter-flowering heathers, along with bulbs like crocuses. Make sure there is good drainage and moist soil.

For anyone growing their own fruit and veg, March is the last chance to prune apples and pears before their buds burst.

As the soil warms up and weeds begin to grow, this is a sign that

it's also time to carry out the first outdoor seed sowings – cabbages, broccoli, cauliflowers, kale, peas, broad beans, maincrop onions, parsnips and turnips can all be sown this month.

It's also time for that post-winter tidy up, especially pruning out rambling roses. Remove thick old stems and try to finish in early March.

Cut back old stems to just above ground level with loppers or a hand saw and cut at an angle to allow water to run off and reduce the risk of rot. That will encourage new, vigorous growth and improve the overall health of the rose.

As a rule, only take out about a third of the whole plant as any more may reduce flowering, and don't forget to mulch around the base after pruning.

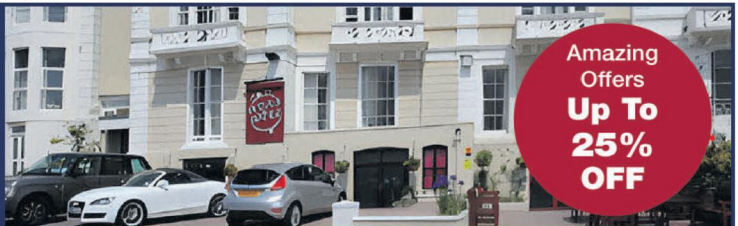
Other garden jobs for March sug-

gested by the Royal Horticultural Society include:

- Pruning bushes and climbing roses
- Planting onion sets and shallots
- Planting summer flowering bulbs
- Planting early potatoes
- Lifting and dividing overgrown clumps of perennials
- Mowing the lawn on dry days (if needed)
- Cutting back ornamental grasses left standing over winter
- Pruning buddleia
- Feeding trees, shrubs and hedges
- Starting to sow vegetable seeds outside in mild areas eg, broad beans, carrots, parsnips, beetroot, onions, lettuces, radish, peas and spinach.

The New Ocean Hotel

WESTON-SUPER-MARE



MID WEEK SPRING SPECIALS

All include four nights accommodation with 'All You Can Eat' full English breakfast, four course evening meal, live nightly entertainment & optional coach travel

Monday 9th March - Friday 13th March	Was £269 NOW £225pp
Monday 23rd March - Friday 27th March	Was £279 NOW £236pp
Monday 6th April - Monday 10th April	Was £295 NOW £247pp
Monday 20th April - Friday 24th April	Was £299 NOW £251pp
Monday 27th April - Friday 1st May	Was £299 NOW £251pp
Monday 4th May - Friday 8th May	Was £309 NOW £258pp
Monday 11th May - Friday 15th May	Was £319 NOW £262pp

WEEKEND BREAKS WITH FREE BAR

All include three nights accommodation with 'All You Can Eat' full English breakfast, four course evening meal, live nightly entertainment, FREE BAR 6pm-10pm & optional coach travel

Friday 13th March - Monday 16th March	Was £265 NOW £219pp
Friday 20th March - Monday 23rd March	Was £269 NOW £222pp
Friday 27th March - Monday 30th March	Was £269 NOW £230pp
Friday 3rd April - Monday 6th April (Easter)	Was £315 NOW £269pp
Friday 10th April - Monday 13th April	Was £279 NOW £240pp
Friday 17th April - Monday 20th April	Was £279 NOW £240pp
Friday 1st May - Monday 4th May	Was £295 NOW £259pp
Friday 8th May - Monday 11th May	Was £295 NOW £251pp



To book or for further information please call us on 01934 621 839 • www.newoceanhotel.co.uk



ARNOLD LODGE

Reception Open Morning

FRIDAY 6TH MARCH
9:30 - 11:00AM



Are you looking for a school where your child can explore their interests, build confidence, and truly thrive?

Join us for our **Reception Open Morning** on **Friday 6th March 2026, 9:30–11:00am** – with themed games and activities for the children and an opportunity for you to discover what makes Arnold Lodge Juniors special.

Follow the ladybird trail and book your place at www.arnoldlodge.com!

✉ admissions@arnoldlodge.com

☎ 01926 778050

15-17 Kenilworth Road, Leamington Spa CV32 5TW





HALF PRICE FITTING

ALL IN A DAYS WORK!

Well, We are the No.1 Makeover Experts!

Why trust your kitchen Makeover to anyone else?

By keeping your existing cabinets and just replacing the doors we can give your kitchen a **new look** in just ONE DAY!

NO NEED TO EMPTY YOUR UNITS - With our system there is no fuss, and it's quick and mess free too!

SAVE BIG this month with our **HALF PRICE FITTING** offer - Buy 6 or more made to size doors and we'll reduce the cost of fitting by 50% and if it's just the Doors you are after, we'll get it done in about one day!

Call and speak to Karen - TODAY!

0800 448 8074

www.doorsandworktops.com

*Offer applies to Door only orders

Nobody beats our prices!

KITCHEN

Doors

& WORKTOPS

Celebrating 27 Years

Showroom - The Doors Group, Doors House
3 Wordsley Green Shopping Centre DY8 5PD

Call us today: 01384 293654 - 0330 321 0461

From around £3000 Complete.

Classified

TELEPHONE 01527 588688 FACSIMILE 01527 584371

PUBLIC NOTICES

Warwickshire County Council

ROAD TRAFFIC REGULATION ACT 1984

Warwickshire County Council has made the following Temporary Traffic Orders:

ROWSE CLOSE, RUGBY

Order Effect: Road closed to vehicular traffic.
Reason for Order: To enable duct laying works.
Order Commences: 2 March 2026 for up to 18 months.

Anticipated Completion: 4 March 2026.

Access & Diversion: No diversion available.

Contractor: Quantum TM, Tel: 01724 786 286.

OVAL ROAD, RUGBY

Order Effect: Road closed to vehicular traffic.
Reason for Order: To enable boundary box renewal and meter installation.

Order Commences: 3 March 2026 for up to 18 months.

Anticipated Completion: 4 March 2026.

Access & Diversion: Percival Road, Sidney Road, Oval Road and vice versa.

Contractor: Chevron TM Ltd, Tel: 03300 080 820.

MAIN STREET, HARBOROUGH MAGNA

Order Effect: Road closed to vehicular traffic.
Reason for Order: To safely enable boundary box and meter renewal.

Order Commences: 5 March 2026 for up to 18 months.

Anticipated Completion: 6 March 2026.

Access & Diversion: Back Lane, Pallion Road and vice versa.

Contractor: Chevron Traffic Management Ltd, Tel: 03300 080 820.

MOOR FARM CLOSE, STRETTON-ON-DUNSMORE

Order Effect: Road closed to vehicular traffic.
Reason for Order: To safely enable the repair or replacement of a manhole frame and cover.

Order Commences: 16 March 2026 for up to 18 months.

Anticipated Completion: 16 March 2026.

Access & Diversion: No diversion is available.

Contractor: GO TRAFFIC MANAGEMENT, Tel: 01613 515 370.

Warwickshire County Council proposes to make the following Temporary Traffic Orders:

BUTLERS LEAP, RUGBY

Order Effect: Road closed to vehicular traffic at the junction of Clifton Road. Banned right turn from Clifton Road onto Butlers Leap whilst works are in progress.
Reason for Order: To repair/replace a manhole frame and cover. Closure overnight 19.00hrs - 06.00hrs.
Order Commences: 18 March 2026 for up to 18 months.

Anticipated Completion: 19 March 2026.

Access & Diversion: Vicarage Hill, Rugby Road, Main Street, Church Street, Newton Road, Newton Manor Lane, Leicester Road, Boughton Road, Butlers Leap and vice versa.

Contractor: CSP, Tel: 07918 389 363.

S Duxbury, Director of Strategy, Planning & Governance, Shire Hall, Warwick CV34 4RL Date 26 Feb 2026

CHESTER STREET, RUGBY

Order Effect: Road closed to vehicular traffic from Abbey Street to Corbett Street.

Reason for Order: Water pipe renewal works.
Order Commences: 7 March 2026 for up to 18 months.

Anticipated Completion: 8 March 2026.

Access & Diversion: Abbey Street, Cambridge Street, Hunter Street, Corbett Street and vice versa.

Contractor: Chevron TM Ltd, Tel: 03300 080 820.

D3442 DUNCHURCH ROAD (SERVICE ROAD), RUGBY

Order Effect: Road closed in its entirety between A426 Dunchurch Road and Shakespeare Gardens.

Reason for Order: Carriageway patching works, closed 09.30hrs - 15.30hrs.

Order Commences: 16 March 2026 for up to 18 months.

Anticipated Completion: 16 March 2026.

Access & Diversion: No suitable diversion - vehicular traffic use A426 Dunchurch Road for access/egress to/from Shakespeare Gardens. Vehicular access & egress will be maintained where possible and safe to do so for businesses and residents only.

Contractor: Balfour Beatty, Tel: 03452 415 302.

SCHOOL LANE, STRETTON-ON-DUNSMORE

Order Effect: Road closed to vehicular traffic.
Reason for Order: To repair/replace a manhole frame and cover.

Order Commences: 17 March 2026 for up to 18 months.

Anticipated Completion: 17 March 2026.

Access & Diversion: Plott Lane, Freebald Lane, Oxford Road, Fincear Lane, Church Hill, Brookside and vice versa.

Contractor: CSP, Tel: 07918 389 363.

ALWYN ROAD, RUGBY

Order Effect: Road closed to vehicular traffic.
Reason for Order: Works to replace/replace defective manhole frame and cover, closed 09.30hrs - 15.30hrs.

Order Commences: 16 March 2026 for up to 18 months.

Anticipated Completion: 16 March 2026.

Access & Diversion: Main Street, Magnet Lane, The Green, Bawmmore Road, Longood Road and vice versa.

Contractor: CSP, Tel: 07918 389 363.

For all of the above temporary orders, pedestrian access to and egress from properties and land situated adjacent to the length of road to be closed will be maintained at all times. Vehicular access will be maintained where possible.

To report any problems with these works or for further details of our current & planned roadworks visit our website warwickshire.gov.uk/roadworksmap or call us 01926 412515.

S Duxbury, Director of Strategy, Planning & Governance, Shire Hall, Warwick CV34 4RL Date 26 Feb 2026

PUBLIC NOTICES

Warwickshire County Council

ROAD TRAFFIC REGULATION ACT 1984

Warwickshire County Council has made the following Temporary Traffic Orders:

PUBLIC FOOTPATHS B43 BEDWORTH AND R37 SHILTON & BARNACLE

Order Effect: Footpaths closed to all traffic at Grid Reference X439699 Y285341.

Reason for Order: To avoid the likelihood of danger to the public due to a collapsed bridge.

Order Commences: 2 September 2024 and was due to expire 28 February 2026. However, the Secretary of State in exercise of his powers under Section 15(5) of the Road Traffic Regulation Act 1984 has directed that the Order shall continue in force until 1 March 2027 or until works are completed, whichever is the earlier (unless the Secretary of State issues a further direction).

Access & Diversion: Please take an alternative route on other Public Rights of Way and Public Roads.

Contact: WCC Rights of Way Team, Tel: 01926 412 909.

D2096 HEATHER ROAD, BINLEY WOODS

Order Effect: Road closed to vehicular traffic from Oakdale Road to Birchwood Road.

Reason for Order: Carriageway patching and associated works, 08.00hrs-16.00hrs.

Order Commences: 5 March 2026 for up to 18 months.

Anticipated Completion: 5 March 2026.

Access & Diversion: Oakdale Road, A428 Rugby Road, Birchwood Road and vice versa.

Contractor: Balfour Beatty, Tel: 03452 415 302.

A45 BIRMINGHAM ROAD WESTBOUND STONEBRIDGE OFF SLIP ROAD, GREAT PACKINGTON

Order Effect: Road closed to vehicular traffic from A45 Birmingham Road to County Boundary (nr Stonebridge Roundabout).

Reason for Order: Carriageway resurfacing and works, 20.00hrs-06.00hrs.

Order Commences: 3 March 2026 for up to 18 months.

Anticipated Completion: 6 March 2026.

Access & Diversion: Vehicular traffic to stay on the A45 Coventry Road to M42 Junction 6 Roundabout rejoin A45 Eastbound off slip road for Stonebridge Roundabout. Vehicular access & egress will be maintained where possible and safe to do so for businesses and residents only.

Contractor: Balfour Beatty, Tel: 03452 415 302.

Warwickshire County Council proposes to make the following Temporary Traffic Orders:

STONELEIGH ROAD, BUBBENHALL

Order Effect: Road closed to vehicular traffic from the entrance to Goldacre for approx. 125m westwards.

Reason for Order: To provide new service to customers. Closure 09.30hrs-15.30hrs.

Order Commences: 20 March 2026 for up to 18 months.

Anticipated Completion: 20 March 2026.

Access & Diversion: Stoneleigh Road, Main Street, Spring Hill, Ryton Road, Leamington Road, Watery Lane, Bubbennall Road and vice versa.

Contractor: Sunbelt Rentals, Tel: 03700 500 792.

For all of the above temporary orders, pedestrian access to and egress from properties and land situated adjacent to the length of road to be closed will be maintained at all times. Vehicular access will be maintained where possible.

To report any problems with these works or for further details of our current & planned roadworks visit our website warwickshire.gov.uk/roadworksmap or call us 01926 412515.

S Duxbury, Director of Strategy, Planning & Governance, Shire Hall, Warwick CV34 4RL Date 27 Feb 2026

PUBLIC NOTICES

Warwickshire County Council

Goods Vehicle Operator's Licence

Nov28 LTD of 14 Navigation Close, Nuneaton, CV10 7FR is applying for a licence to use J Coates Garage Services Ltd, Unit 2, Shawell Depot, Watling Street, Lutterworth, Leicestershire, LE17 6AR as an operating centre for 5 goods vehicles and 5 trailers.

Owners or occupiers of land (including buildings) near the operating centre who believe that their use or enjoyment of that land would be affected, should make written representations to the Traffic Commissioner at Quarry House, Quarry Hill, Leeds, LS2 7UE, stating their reasons, within 21 days of this notice.

Representors must at the same time send a copy of their representations to the applicant at the address given at the top of this notice.

A Guide to Making Representations is available at: www.gov.uk/government/publications/a-guide-to-making-representations-objections-and-complaints-goods-vehicle-operator-licensing

DULCIE JUNE KEARNS (Deceased)

Pursuant to the Trustee Act 1925 any persons having a claim against or an interest in the Estate of the above named, late of 48 the Barley Lea, Coventry, CV3 1DS, who died on 15/12/2025, are required to send written particulars thereof to the undersigned on or before 28/04/2026, after which date the Estate will be distributed having regard only to the claims and interests of which they have had notice.

Angels Solicitors LLP, 117-119 New Union Street, Coventry, CV1 2NY

To advertise call 02476 011 777

Dan Green Chief Executive

PUBLIC NOTICES

Warwickshire County Council

ROAD TRAFFIC REGULATION ACT 1984

Warwickshire County Council has made the following Temporary Traffic Orders:

MOUNT PLEASANT, BISHOPS ITCHINGTON

Order Effect: Road closed to vehicular traffic.

Reason for Order: To safely enable works to install new water main.

Order Commences: 16 March 2026 for up to 18 months.

Anticipated Completion: 20 March 2026.

Access & Diversion: No diversion available.

Contractor: Chevron Traffic Management Ltd, Tel: 03300 080 820.

C140 HARBURY LANE, LADBROKE

Order Effect: Road closed between B4451 Kineton Road and Church Road.

Reason for Order: Carriageway patching works, closed 08.00hrs-16.00hrs.

Order Commences: 14 March 2026 for up to 18 months.

Anticipated Completion: 15 March 2026.

Access & Diversion: B4451 Kineton Road, A425 Leamington Road, A423 (Banbury Road, Southam Road), Old Banbury Road, Church Road and vice versa. Vehicular access & egress will be maintained where possible and safe to do so for businesses and residents only.

Contractor: Balfour Beatty, Tel: 03452 415 302.

C36 BYFIELD ROAD, PRIORS MARSTON

Order Effect: Road closed from Hardwick Road to County Boundary.

Reason for Order: Carriageway patching works, closed 09.30hrs-15.30hrs.

Order Commences: 16 March 2026 for up to 18 months.

Anticipated Completion: 16 March 2026.

Access & Diversion: Main Road, Hellidon Road, A361, Boddington Road, Byfield Road and vice versa. Vehicular access & egress will be maintained where possible and safe to do so for businesses and residents only.

Contractor: Balfour Beatty, Tel: 03452 415 302.

For all of the above temporary orders, pedestrian access to and egress from properties and land situated adjacent to the length of road to be closed will be maintained at all times. Vehicular access will be maintained where possible.

To report any problems with these works or for further details of our current & planned roadworks visit our website warwickshire.gov.uk/roadworksmap or call us 01926 412515.

S Duxbury, Director of Strategy, Planning & Governance, Shire Hall, Warwick CV34 4RL Date 26 Feb 2026

PUBLIC NOTICES

NOTICE OF APPLICATION FOR A NEW PREMISES LICENCE UNDER THE LICENSING ACT 2003

Name of applicant: SHR Juices LTD
TA Juices4Life

Notice is hereby given that SHR Juices LTD has applied to Coventry City Council for a NEW VARIATION PREMISES LICENCE for 507 Foleshill Road CV6 5AU

Details of Application: 17/02/2026. To provide late night refreshments including light hot food and cold drinks. Monday-Sunday: 23:00-02:00

Any person wishing to lodge a representation concerning this application may write to: Licensing Authority, The Council House, Earl Street Coventry CV1 5RR

Or send an email to: licensing@coventry.gov.uk.

The application may be viewed during normal office hours at the above address and further information may be available at www.coventry.gov.uk on the public register.

Any Representation relating to this application must be made in writing to the Licensing Authority by 16/03/2026

Please note it is an offence to knowingly or recklessly to make a false statement in connection with an application. The maximum fine on summary conviction for this offence is Unlimited.

PUBLIC NOTICES



Rugby Borough Council
Town and Country Planning
Act 1990 (as amended)

Application Number R26/0034

DUNCHURCH PARK HOTEL AND CONFERENCE CENTRE, RUGBY ROAD, DUNCHURCH, RUGBY, CV22 6QW

Listed building consent for proposed restoration of existing glasshouse.

This development may affect a Listed Building

Application Number R26/0086

BARNYARD CARS, HALL FARM, BROWNOVER LANE, RUGBY, CV21 1HY

Variation of condition 2 of R22/0085 to extend current use within the existing parameters of the existing planning permission for the land for a further 3 year period.

This development may affect a Conservation Area

Application Number R26/0103

LAND ADJACENT TO AND SOUTH OF CHURCH FARM, CHURCH STREET, CHURCHOVER, RUGBY, CV23 0EW

Variation of Condition 2 (approved plans) to allow the dwelling and garage to be repositioned 400 mm away from the site boundary and removal of Conditions 3 (External Materials), 7 (Hard Surfacing and Driveway Materials), 10 (Boundary Treatments), 11 (Site Levels), 12 (Drainage), 13 (Construction Management Plan) 15 (Archaeology) and 19 (EV Charging) of R24/0914 (Erection of a dwelling, garage, car-port and associated parking)

This development may affect a Conservation Area

Application Number R26/0137

CROSS KEYS, VICARAGE LANE, DUNCHURCH, RUGBY, CV22 6QP

Partial conversion of garage to form bedroom and ensuite

This development may affect a Conservation Area

Members of the public may inspect copies of the application, the plans and documents submitted with it online at: www.planningportal.rugby.gov.uk or in an electronic form at: Town Hall, Evreux Way, Rugby CV21 2RR between the hours of 9.00 am and 5.00 pm Monday to Friday until 20 March 2026. Please note a planning officer would not be present.

If you wish to make an appointment to discuss the application please contact the case officer.

Any person who wishes to make representation to the above mentioned Council about the applications should make them online - www.planningportal.rugby.gov.uk (search for application number and select comment) - or in writing by that date to The Chief Officer Growth and Investment, Town Hall, Rugby, CV21 2RR.

If an application is determined by the Planning Committee, members of the public may have the opportunity to speak at the meeting. More details about public speaking are available from the Council or on-line at: www.rugby.gov.uk/speakingatplanning

For householders or minor commercial applications, in the event of an appeal against a refusal of planning permission, dealt with on the basis of representations in writing, any representations made will be sent to the Secretary of State, and there will be no further opportunity to comment at the appeal stage.

Nicola Smith Chief Officer - Growth and Investment

PUBLIC NOTICES

AGM NOTICE

Sunday 8th March 11.30am
The Copper House Club Ltd
Kenilworth, CV8 2FZ

Open to fee paying members of the club for the year 2025 that continue to be a member into 2026 only.

Membership cards required on entry.

PUBLIC NOTICES

Goods Vehicle Operator's Licence

Sanjh Logistics Ltd of 30 Pilling Close, Coventry, CV10 7FR is applying for a new goods vehicle operator's licence to use Mitchell Potatoes Ltd, Boots Farm, Bourton on Dunsmore, Rugby, CV23 9QJ as an operating centre for 2 goods vehicles and 2 trailers.

Owners or occupiers of land (including buildings) near the operating centre who believe that their use or enjoyment of that land would be affected, should make written representations to the Traffic Commissioner at Quarry House, Quarry Hill, Leeds, LS2 7UE stating their reasons within 21 days of this notice.

Representors must at the same time send a copy of their representations to the applicant at the address given at the top of this notice. A Guide to Making Representations is available at: www.gov.uk/government/publications/a-guide-to-making-representations-objections-and-complaints-goods-vehicle-operator-licensing

Classified

TELEPHONE 01527 588688 FACSIMILE 01527 584371

ANNOUNCEMENTS

DEATHS

JENNER

Philomena

Passed away at home on 10th February 2026, aged 86 years.

Beloved wife of Billie and loving mum to John and Julie.

A wonderful Grandma to Isabel, Maddie, Danny, Adam and Sam.

Philomena's funeral service will take place on Friday 20th March at 10.30 am at Sacred Heart Church,

followed by the committal at Rainsbrook Crematorium at 12pm.

Family Flowers only.

Donations if desired can be made to Marie Curie via the following link-Philomenajenner.muchloved.com

Wilf Smith and son funeral services, 25 Main Street,

Bilton,

Rugby,

CV22 7NQ.

Tel-01788 814 157

SALES & WANTS

MISCELLANEOUS

RECLINER CHAIR electric rise & recline £169 Manual recline chair £60 High seated chair £40 Can deliver 07703 925662

BEDS NEW Doubles £95 Singles £59 King size £159. Second hand doubles £49 Singles £29 Fridges £49 Freezers £59 Can deliver 07703 925662

LOST Golf balls no problem all good names & condition 100 balls £22 01564 784171

STRESSLESS type chair & footstool brown leather with round wooden bases £150 ono 07789064907

SOOTY cookie jar or biscuit barrel £25 07719695685

SMALL mahogany chair in ex cond £25 07719695685

MISCELLANEOUS

BATH tub with taps Ex cond FREE 07719695685

STONE hot water bottle £25 07719695685

INDIAN prayer chair £80 07719695685

GOGO Elite Mobility Scooter (battery operated) Excellent condition, 4 years old £150 ONO 01608644847

MOBILITY Scooter compact folds for car, batteries, needs attention, spares & repair £50 01789 778174

MANS genuine sheepskin coat, brown 42 inch chest. Excellent condition £30 Tel 07784170721

LARGE rectangular dining table, medium oak colour. Excellent condition. Legs removable for transport. Tel. 07784170721

WANTED

****WANTED: Vinyl Records CDs Cassettes Vintage or New****
Seeking classic rock, jazz, indie and rare finds. Cash paid
Call or text: 07765 142354 Or 01527 893992
Or email: welston@live.com
Paul (Albatross & Doomed Records)

SERVICES

CONSERVATORIES & GLAZING

DOUBLE GLAZING REPAIRS

Locks, Hinges, Handles, Glass, Windows or Doors
New Doors/Windows
Also Supplied/Fitted
07973 200 623

HOME IMPROVEMENTS

HANDY MAN

If you're looking for a fast and reliable service

Then call Lenny

- Plastering • Plumbing • Fencing
- Gardening • Flooring • Kitchens
- Bathrooms • Carpentry • Flat pack furniture
- Tiling • Painting

02476 443 996

07794 784 266

NO VAT CHARGE

KITCHENS

S.W INSTALLATIONS

Kitchens & Bathrooms

FREE DESIGN & QUOTATION

QUALITY KITCHENS & BATHROOMS SUPPLIED & FITTED

PLUMBING, CARPENTRY, TILING, WORKTOP & DOOR REPLACEMENT

(Supply & fit, supply only or fit only)

LOCAL TRADESMAN 20YRS EXPERIENCE NO JOB TOO SMALL

07971 684 353



GIVE A LOCAL EXPERT A CALL!

If you have a message for a loved one, call our team on **01527 588688**

SOMETHING TO SELL?

Advertise them in **The Observer** or **The Standard**

Simply fill in the coupon below, tick the appropriate box, enclose your cheque or credit card details if required, and we'll do the rest - Or alternatively email your free ad to: freeads@bullivantmedia.com

Free Lineage (Items upto value £500) Paid for Boxed Ad (Items of any value)

Details of Item For Sale for Publication (No Pets or Livestock or Firearms please):
(MAX 15 WORDS)

Tel: _____

Details (Not for Publication):
Mr/Mrs/Ms _____ Initials _____ Surname _____
Address _____
Postcode _____
Tel: _____ Mobile _____
Email: _____

I enclose cheque, payable to Bullivant Media Group Ltd, value £.....
or alternatively
Please debit my card for £..... Visa/Mastercard/Maestro/Delta
Credit Card Number _____
Exp: _____ Start: _____
Sec No: (Last 3 digits) _____ Issue No: (if applicable) _____

Send to Bullivant Media Group Ltd, Webb House, Church Green East, Redditch, Worcestershire, B98 8BP or email your advertisement to freeads@bullivantmedia.com

Raise some extra cash and make someone else's day by selling your unwanted items

If your item is valued at £500 or less - its **FREE OF CHARGE** in lineage (max 15 words)

But if you want your advertisement to really stand out or if your item is valued at over £500, you can place details in a boxed advertisement for just

£5.75 (inc Vat)

3 PIECE SUITE brown leather, perfect condition as new
£550 can deliver
Telephone **10234 567890**

(£5.75 incVAT example boxed advertisement)

Check out our E-Editions!

Coventry Observer Upgraded route set to improve



Windows Plus Windows Frames (Conservatories) Porches | Glass & Soling
02476 208272
www.windows-plus.co.uk

Rugby & Lutterworth Observer

Izzy di her to

DRIVES Are you looking to your driveway...
Tel: 0800 303269 | Mob: 07773 311552 | www.drives.co.uk

Leamington Observer

Homes to a re

DRIVES Are you looking to your driveway...
Tel: 0800 303269 | Mob: 07773 311552 | www.drives.co.uk

www.coventryobserver.co.uk/editions
www.rugbyobserver.co.uk/editions
www.leamingtonobserver.co.uk/editions

The same paper you love on your **mobile, tablet and computer**

Dasilva believes City have 'reset' after blip

FOOTBALL: JAY Dasilva insists Coventry City showed 'belief' to come from behind and claim victory at Sheffield United.

Dasilva impressed at left-back as goals from Haji Wright and Jack Rudoni inspired the Sky Blues to a first victory at Bramall Lane in over a decade.

Coventry are now unbeaten in their last four league games, the club's longest run without defeat since November.

However, Dasilva insists he and his teammates always believed they could get a result against the Blades even after falling behind to Harrison Burrows' goal.

Dasilva said: "We knew how important it would be for us to come here and get that away win.

"Our main focus is making it a nine-point week [against Stoke on Saturday].

"We knew it was going to be tough coming here, they've started to pick up on results and form.

"We just had to stick with it. The main point was belief and just believing in

each other and that we could get the job done.

"You can see the bodies on the line and how hard the boys are working to keep the ball out the back of the net."

The Sky Blues sit five points clear at the top of the Championship table after recording their 20th league win of the campaign.

And Dasilva admits Coventry's difficult spells in both December and January reminded the club just how difficult a league the Championship is.

Dasilva added: "We took a bit of a blip. It was good for us to reset the mind and get back to focusing on what we've been doing well.

"We had a punch on the nose and just a reminder of how tough this league is.

"Not every game is going to be handed to us and we've got to work hard for each win.

"It looks nice [at the top of the table] but we've just got to focus game-by-game and what's ahead of us.

"We've already seen how quickly things can change in this league."

Skipper leads the way for Cov with two tries

RUGBY UNION: CAPTAIN Jordan Poole crossed twice as Coventry Rugby battled to a bonus point 31-19 victory against Hartpury.

Poole dotted down either side of half time at Butts Park Arena while Senitiki Nayalo and Api Bavadra also crossed for tries for the home side.

The result means Coventry sit fourth in the Champ Rugby table, eight points behind Worcester Warriors in second.

Alex Rae's side scored the game's first try after just eight minutes as Nayalo powered over from a quickly-taken free-kick following a five-metre lineout.

However, Hartpury responded six minutes later when Harry Short touched down from a driving maul at a line-out following successive penalties.

The home side reclaimed the lead on 19 minutes as Poole broke away from a powerful driving maul to dot down his first try of the game.

However, the visitors hit back again five min-

utes later when Short dotted down his second try after beating a defender down the right.

With the teams locked at 14-apiece at the break, Coventry's Tommy Mathews kicked a 50:22 which saw Allan Ferrie held up over the line.

Coventry struck moments later on 44 minutes when Bavadra gathered Sam Maunder's perfectly-weighted kick over the top and raced to the line to finish.

And Poole dotted down the home side's bonus point try on the hour mark with his second of the game from another driving maul.

Hartpury kept themselves in the contest five minutes later as Alex Gibson's solo effort reduced the deficit.

A penalty from Mathews stretched the home side's lead and ensured the fly-half ended the game with a perfect record from the kicking tee.

Coventry are next in action against Amphyll on Saturday, February 28 with kick-off at 2pm at Dillingham Park.

Fighter to take part in half-marathon to raise funds for boxing class

by Aaron Sutcliffe
aaron.sutcliffe@bulivantmedia.com

BOXING: A YOUNG fighter from Leamington is raising funds to start a girls-only boxing class by running in the Coventry Half Marathon.

Isobel Lockley, who trains at Royal Leamington Spa Amateur Boxing Club in Lillington, hopes to launch the girls-only class soon.

The young fighter recently reached the semi-finals of the England National Development Boxing Championships.

And Lockley is running in the Coventry Half Marathon in April to raise funds for the girls-only class.

Any donations will go directly towards subsidising the cost of the sessions and improving facilities at the not-for-profit club.

Lockley said: "My club is extremely inclusive, and really support me, driving hours to go to girls sparring days, two hours to Bolton for a bout and we even drove four hours to Devon and back for a bout.

"We often have girls and women drop in to a session but only a few come back.

"I really want to change this. We want to create one hour a week where girls can be comfortable and confident.

"We had funding to run this girls-only class for a few weeks last year and it was highly successful. We had eight girls coming every week and some girls really



Isobel Lockley is running the Coventry Half Marathon in April. ©

showed promise. "Unfortunately the funding ended just before Christmas and the class had to end. Only one girl has since joined in with boys sessions.

"This is so upsetting to me that I've decided to re-qualify as an England Boxing coach and voluntarily run the sessions myself.

"Since I don't want anyone to be excluded, I plan to only charge £2 a session, to cover the running costs of the gym.

"I am raising money to kick-start this and hopefully as numbers grow it can be self-sufficient."

Sessions will take place at Royal Leamington Spa ABC and are open to

girls aged 10-years-old and above with beginners to the sport encouraged to sign up.

To donate to Lockley's cause, visit: justgiving.com/crowdfunding/isobel-lockley-boxing

Jessica's Promise - a charity which supports children and young people financially in amateur sport - will aid Lockley's fundraising for the class and gym.

Set up in memory of Jessica Pardo, who loved sport and played rugby, her legacy is now to provide opportunities to children and young people to play sports, to improve mental health and wellbeing.

For more information, visit: jessicaspromise.org

Blaze back on winning trail with victory at Stars and overtime success against Storm on home ice

ICE HOCKEY: COVENTRY Blaze returned to winning ways with victories against both Dundee Stars and Manchester Storm respectively.

Blaze triumphed 4-2 at Dundee Ice Arena as Alessio Luciani scored twice while Matthew Gleason and Jordan Power also found the net.

Coventry then claimed a 2-1 overtime win against Manchester at the Skydome Arena as Colton Saucerman won the points for Blaze after Mack Stewart opened the scoring.

The results mean Coventry sit sixth in the Elite League standings.

Blaze broke the deadlock against Dundee when short-handed at 3:40 as Gleason broke clear and produced a wraparound finish after Dundee spurned a powerplay chance.

And Gleason went close again after Blaze killed another penalty only for Emil Kruse to make a sharp save to keep out the former's backhand attempt.

However, Dundee equalised at 26:41 as Spence Naas forced home a loose puck with Blaze's William Boysen serving a minor penalty.

Blaze reclaimed the lead just 56 seconds later when Luciani reacted quickest to fire home a rebound at 27:37 and restore the away side's advantage.

Luciani scored his second of the game at 34:16 when he found space in the slot to finish past Kruse.

Dundee reduced the deficit to a single goal less than a minute later at 35:12 as Jonathan McBean produced a smart finish to set up a tense final period.

The Stars conceded three penalties in the final period and withdrew Kruse for an extra skater with 74 seconds remaining.

And with less than a second left on the clock, defenceman Power fired into an empty net to seal the points for Blaze.



Blaze overcame Manchester Storm in overtime. Picture by Scott Wiggins.

Coventry then battled to a hard-fought overtime victory against Manchester to close the gap on Storm to three points in the Elite League table.

Blaze were handed the first powerplay of the night at 4:46 when Zach Sullivan was assessed a two-minute minor for interference after a heavy hit on Zaine McKenzie.

Although Coventry applied early pressure, Manchester responded with an extended spell of offensive zone time which eventually saw David Clements called for slashing at 9:13.

However, Blaze struck first at 14:01 when Stewart lifted the puck over the pads of Drew DeRidder after good work from Saucerman.

The second period burst into life immediately with a spirited scrap at 21:24 between Storm's Chase Harrison and Blaze's Connor Russell as both players received fighting majors.

And Manchester took two further minors

before the midway mark in a goalless second period although DeRidder kept Blaze at bay.

Coventry had both Clements and Russell sent to the box early in the third period.

And the Storm capitalised on the five-on-three advantage at 47:18 when Brady Gilmour scored on the powerplay to level the game.

Blaze netminder Mat Robson turned aside 31 shots in a match-winning performance as his saves took the game to overtime.

And Saucerman combined with Boysen on a two-on-one break in the extra period at 63:50 to score the winning goal as Blaze secured a dramatic victory.

Coventry are next in action against Dundee on Friday, February 27 with the face-off at 7:30pm at Dundee Ice Arena.

Blaze then host Guildford Flames on Saturday, February 28 with the face-off at 7pm at the Skydome.

CRS LTD
 Spring Lane South, Malvern WR14 1AT
 ATF's are the **ONLY** legal way to scrap your vehicles
BUYERS
 of all SCRAP Metals and SCRAP Vehicles
 The **ONLY** authorised treatment facility in Malvern!
 Best Prices Paid • Collection & Skip Drops Farm
 Equipment, Copper, Brass etc. • 50 Ton Weigh Bridge
ID REQUIRED - 01684 578081
 www.crs-malvern.co.uk

Observer SPORT



9 772040 128006
 Published by Bullivant Media Group Ltd, Webb House,
 Church Green East, Redditch, Worcestershire, B98 8BP
 Printed by Newsquest, Newspaper House, Osney
 Mead, Oxford, Oxfordshire, OX2 0EJ

VINYL RECORDS WANTED
 Buying since 1978
 Get your cash TODAY!
 I will come to you
Phone PAUL
01527 893992 | 07765 142354

www.rugbyobserver.co.uk BRINGING YOU ALL THE LATEST SPORTS NEWS AND VIEWS FROM THE AREA

Valley in trouble after derby defeat at Sphinx

by Aaron Sutcliffe
 aaron.sutcliffe@bullivantmedia.com

FOOTBALL: RUGBY Town remain in the relegation zone following a late 1-0 derby defeat against rivals Coventry Sphinx.

A late goal from Jared Bradshaw condemned Valley to a fifth straight league defeat at the Cameron Slater Arena.

And the result means Rugby sit 21st in the Northern Premier League Midlands table, two points from safety and just one place above bottom side St Neots Town.

Valley went close early on as Rivel Mardenborough fired wide from a tight angle.

Sphinx grew into the contest as



Xander Grieves saved well from Raymond Poku late in the first period.

Coventry goalkeeper Oliver Bosworth kept out Mardenborough's powerful effort early in the second period and then denied Nathan

Kabeya when one-on-one.

The home side responded with a chance of their own as substitute Damian Kelly sent a low shot wide following a cross from the right.

And the game's decisive moment came on 78 minutes when Bradshaw curled a shot into the net from the edge of the penalty area following a short backpass from Rugby defender Ryley Nicholson.

Sphinx almost sealed the points at the death as Grieves made a reaction stop to keep out Chris Cowley's effort.

Rugby are next in action against St Neots Town on Saturday, February 28 with kick-off at 3pm at Kester Way.

Jamal Adams recently joined Valley from Sphinx. Picture by Martin Pulley.

Bears appoint Orr as new club chair

CRICKET: WARWICKSHIRE CCC have confirmed the appointment of Tracey Orr at the club's new chair.

Orr will take up the role from May 1 later this year and is currently the club's senior independent director, a role she has held since 2023.

She is also a member of the club's cricket committee, board lead for professional women's cricket and a member of the nominations and remuneration committee.

Orr was co-opted as a board director in February 2022 and has spent more than 30 years working in the co-operative sector.

Orr said: "I am delight-

ed and honoured to be appointed as the new chair at Warwickshire County Cricket Club.

"I have always been moved by the passion, enthusiasm and dedication demonstrated by everyone you meet since joining the club four years ago.

"It was this collective commitment from members, colleagues, players, communities and friends of this club that inspired me to want to lead it forward.

"My gratitude and thanks also extend to outgoing chair Mark McCafferty.

"He has led with ambition and integrity and we are all grateful for his guidance and support over the last nine years."

CASHBROKERS

LEAMINGTON SPA

CASH PAID

FOR GOLD, SILVER, COINS & BULLION

PAWNBROKING LOANS

SCRAP GOLD & SILVER

BUY BACK

JEWELLERY & WATCHES

COINS & BULLION



01926 258252

144 Parade, Leamington Spa, CV32 4AG

www.cashbrokersleamingtonspa.co.uk




MEET OUR AMAZING TEAM OF ADVANCED QUALIFIED STAFF



Dr Sharon Alston
BVSc PGCertSAS MRCVS
Senior Vet & Founder



Dr Antonio Aleksikj
PGCertSAS MRCVS
Vet



Sidney Chan
BVetMed PGCertDI MRCVS
Vet



Verity Browning
DVM GPCert (feline practice) MRCVS
Vet



Christine Kan
MVB Bsc BA OV MRCVS
Vet



Jaun Luis Abad Colom
DVM MRCVS
Vet



Sarah Cochrane
MA(Cantab) Mphil VetMB CCRT MRCVS
Vet



Sylvia Ruiz
DVM GPCert(EMS) MRCVS
Vet



Emily Gamble
RVN DVLM
Senior Nurse



Laura Brander
RVN Ncert(AnaesthNsg) BCCS dip
dog.bhv - Senior Nurse



Bridget Facer
RVN HND certECC
Senior Nurse



Kirsty Gallacher
RVN
Nurse



Charlotte Blair
RVN Cert VNECC
Nurse



Sara Scorrano
RVN CCMN
Nurse



Letitia Morgan
RVN
Nurse



Crystal McCarthy
RVN Bcom
Nurse



Karly Jalowik
Client Services Manager



**RUGBY VET
HOSPITAL**
PUTTING YOUR PETS FIRST

www.rugbyvethospital.co.uk

The Locks, Hillmorton, Rugby. CV21 4PP

TEL - 01788 345345
(Phone lines go live from 9th March)



RUGBY VET HOSPITAL

PUTTING YOUR PETS FIRST

Opening 16th March

**RUGBY'S ONLY INDEPENDENT 24 HOUR
VETERINARY HOSPITAL**

Open day 14th March 10am-3pm

Affordable vet care for day to day routine needs, backed up by a full compliment of advanced procedures and surgeries.

24 hour on site care, 7 days a week.

www.rugbyvethospital.co.uk

The Locks, Hillmorton, Rugby. CV21 4PP

TEL - 01788 345345
(Phone lines go live from 9th March)