

**WANTED**  
**Motorcycles and Scooters**  
 Any cc, condition or age,  
 good prices paid  
 07944 781 933 | 01926 257 643

Friday, April 17th 2026 Week 16

 facebook.com/rugbyobserver

rugbyobserver.co.uk

 @rugbyobserver t: 01926 451900

Your **FREE** edition - just pick one up and keep up with the news

# Going the distance for a mountain of funds

by **Andy Morris**  
 andy.morris@bullivantmedia.com

AN INSPIRATIONAL eight-year-old from a village near Rugby has helped to raise over £10,000 for charity by climbing one of Britain's highest peaks on the tenth anniversary of his uncle's tragic death.

Harry Bavington, from Stretton-on-Dunsmore, completed the 10-mile round trip to the summit of Mount Snowdon and back in memory of his uncle Robert Bavington, from whom Harry takes his middle name.

Web designer Robert was killed by a single punch during a night out in Leamington in 2016.

His brother James – who accompanied son Harry on the hike along with best friend Matt Burnell and uncle Ian Holt – said he wanted to channel the 10-year milestone into something positive.

He said: "Harry is named after his late uncle. Robert Harry became Harry Robert. He never had the chance to meet Rob, but he knows all about him, and completing this hike in his name meant a huge amount to our whole family."

"We chose this particular route because Rob had completed the very same hike years

ago with myself and Matt. It felt like the right way to honour him, retracing his steps on the exact anniversary."

The wider family came out to Wales to support the hikers on the day, including James and Rob's parents, two of their aunts, and James' nephew Jack.

"They met us at the end of the hike in Llanberis," James said. "Mum and Dad were absolutely delighted and emotional about the whole event. It was a really positive day for all of us."

The group chose to use the event to raise money for Breast Cancer Now.

James said: "We chose Breast Cancer Now because we've had a lot of breast cancer in our family, and I also have a close friend who is terminally ill as a result of the disease. It's a cause that's very close to us."

He added that the support and generosity from friends and family had been 'incredible' in helping the group to raise over £10,000 – ten times their original fund-raising target.

"The symbolism of the whole thing hasn't been lost on us either. Ten miles, retracing a hike Rob once completed, on the exact 10th anniversary of his death, and now raising over £10,000."

"That last part was never planned – but it's an absolute delight."



Left to right: Ian Holt, Teddy the dog, James Bavington, Harry Bavington and Matt Burnell. Robert Bavington (LEFT) was killed by a single punch during a night out in Leamington in 2016.

"Breast Cancer Now have offered to host Harry at their London offices where he'll hand over a cheque for the total amount raised, and they're looking forward to giving him a tour and showing him how the money raised will be put to good use."

Visit <https://www.justgiving.com/page/10years10miles> to donate.

# RUGBYS ONLY INDEPENDENT 24 HOUR VETS

**NOW OPEN**  
**AFFORDABLE**  
**VET CARE**



**RUGBY VET HOSPITAL**  
 PUTTING YOUR PETS FIRST

**THE LOCKS,**  
**HILLMORTON,**  
**CV21 4PP**  
**TEL - 01788 345345**

  Register at [www.rugbyvethospital.co.uk](http://www.rugbyvethospital.co.uk)  

Championing the needs of Rugby residents since 1991 and delivering the news to you every week

# Big names set to attend Fest on the Close

by **Andy Morris**  
andy.morris@bullivantmedia.com

**MUSIC, comedy and theatre will take centre stage at a summer festival which returns to Rugby in June.**

The Festival on The Close, Rugby's annual celebration of culture, creativity, and community, will feature stand-up comedy from award-winning comedian Sara Pascoe, a performance by beloved storyteller Michael Rosen, and live music from Amy Winehouse tribute act Absolute Amy.

London Festival Opera will perform arias, duets, and orchestral highlights in A Night at the Opera.

Much of the five-day festival is staged at an outdoor arena at Rugby School's famous pitch The Close, with additional events in the school grounds and venues, from outdoor performances and interactive theatre to intimate chamber concerts and family activities.

The festival will again involve young people, offering performances and workshop opportunities for students in Warwickshire to collaborate with professional artists and explore new disciplines.

The event will raise money for the Brady Club, a charity dedicated to empowering young people in the Rugby community.

Festival director Tim Coker said: "At its heart, the festival remains a celebration of community, supporting the work of local Rugby charity The Brady Club and bringing people together through shared cultural experiences.

"Whether you come for the performances, the atmosphere, the food and drink or the opportunity to be inspired, we look forward to welcoming you to The Close in 2026."

The Festival on The Close takes place from June 20 to 25. Visit [www.ticketsource.co.uk/thefestivalontheclose](http://www.ticketsource.co.uk/thefestivalontheclose) for more information and to book tickets.



Sara Pascoe. s



Michael Rosen. s

the **fareys**  
FAREWELL TOUR

**THE ALBANY THEATRE**  
**Sunday 10th May**  
Tickets from **BOX OFFICE 024 7699 8964**  
OR ONLINE [www.albanytheatre.co.uk](http://www.albanytheatre.co.uk)

FOR THE FINAL TIME hear them sing all their hits including SWEET 16, I WILL LOVE YOU, THE GREEN FIELDS OF FRANCE, RED ROSE CAFE, THE OLD MAN, LEAVING NANCY, CLARE TO HERE etc.



The New Spires, in Grayswood Avenue, will welcome the FA Cup trophy this weekend. s

## Cup fever returns to the city

THE CUP runneth over for Coventry City fans, who will have a chance to get up close and personal with the FA Cup this weekend.

With the Sky Blues needing just a point to confirm Premier League promotion at Blackburn Rovers tonight (Friday), fans could celebrate tomorrow by getting a selfie with the famous FA Cup trophy the team famously won in 1987.

The legendary silverware will visit the New Spires pub, in Grayswood Avenue, on tomorrow (Saturday), from 12pm to 3pm.

Later in the afternoon, supporters will have another opportunity to capture the moment as the FA Cup travels to the Penny Farthing, in Gramercy Park, between 4pm and 7pm.

The New Spires recently reopened after a £400,000 refurbishment.

General manager Phillipa Sullivan said: "Moments like this don't come around very often and it's fantastic to be able

to share the FA Cup experience right here."

**ANTIQUE & VINTAGE FAIR**  
**SUNDAY 26TH APRIL**  
100 INDOOR STALLS **ENTRY 9AM - 2PM**  
Sky Blue Sports Connection Ryton on Dunsmore CV8 3FL  
Free parking & café - Entry £3, under 16's FREE  
Dogs are welcome  
Contact 07939 445024 [www.gjairs.co.uk](http://www.gjairs.co.uk)

**PUBLIC NOTICES** For all your latest information on **Planning Proposals, Traffic Notices, Goods Vehicle Operator Licences, Licences To Sell Alcohol and Probate Notices...** See page **29**



# Crime-busting students bag prize

From left: Sarayu Kotha, Sera Deepak, Iris Parsons and Grace Rankin get a taste of success at the National Crimebeat Awards. s

The Project Prevent team with High Sheriff of Warwickshire Karen Lynch MBE (front, third from left) and representatives of Warwickshire Police, Warwickshire Crimebeat, G-Force, and Rugby High School. s

by **Andy Morris**  
andy.morris@bullivantmedia.com

**‘A WONDERFUL achievement’ – students at a Rugby secondary school finished runners-up at a national awards ceremony, for devising a ‘special’ crime-fighting project.**

A team of students from Rugby High School (RHS) won the silver medal at the National Crimebeat Awards 2026.

The student team leaders of the school’s entry – Project Prevent – won the medal after presenting their solution to the audience at a ceremony at the Royal National Hotel in London.

Students Sarayu Kotha, Sera Deepak, Grace Rankin and Iris Parsons worked with High Sheriff

of Warwickshire Karen Lynch MBE to create a project to address the crimes that concerned them the most: assault, grooming and harassment.

The students teamed up with Warwickshire Police, sexual abuse support body Safeline, Rugby Borough Council and local self-defence provider G-Force to develop the project.

The Project Prevent team were accompanied by the High Sheriff, Warwickshire Crimebeat chair Simon Miesegaes, RHS Chair of governors Peter Reaney, deputy headteacher Joanna Grimes and Rugby Police’s youth engagement team.

At the ceremony, the team delivered a professional presentation to a room full of more than 150 people – impressive competition judges in the process.

The high sheriff said: “Reaching

a national final with a project of this calibre is an outstanding achievement.

“These young women have not only excelled on a national stage but have delivered meaningful, preventative work across Rugby Borough to tackle assault, grooming and harassment.

“As high sheriff, my role is rooted in supporting law and order and, crucially, in preventing crime – and this is exactly what we are seeing here: intelligent, professional action that will help make communities safer.”

Crimebeat’s Miesegaes said the Project Prevent team had proved that young people can help to make their own communities safer.

He said: “We always knew

Project Prevent and the team from Rugby High School had something special but to come second behind Greater London in the National Crimebeat finals is a simply wonderful achievement.”

RHS head Mr Grady said he was ‘tremendously proud’ of the students who contributed to and participated in the project.

He added: “It began over 18 months ago, with workshops at the school where over a hundred students contributed to initial planning phases.

“The four students that drove the project forward did so building on the efforts and ideas of their peers and so this really is an award for the collaboration and insight of lots of our students.

“However, we could not be prouder of Iris, Grace, Sarayu and Sera.

“This project has had a trans-

formational impact on our school, and local schools, and the fact that four students in our school will have impacted and supported over 4,500 students across Warwickshire by the time we have finished is really quite something.

“Resilience, tenacity and a passion to support our community has been the cornerstone of their work.

“We want our students to leave us knowing their actions have the potential to change the world. In this case, our students have proven it to themselves and the rest of our community already. What an achievement.”

The National Crimebeat Awards celebrates and rewards youth-led projects that seek to reduce the incidence of crime and to support victims of crime in communities across England and Wales.

# OFTEN IMITATED BUT NEVER EQUALLED

While all costs are going up - OURS ARE STAYING DOWN

Due to our customer friendly services of No Door Salesmen, No Showroom and little overheads



**NEW FLUSH WINDOWS**

**BEAUTIFUL COMPOSITE DOORS**  
Fully fitted  
**Competitive Prices**



**UPTO 30% OFF ALL WINDOWS**



**ALL PRODUCTS HAVE A 10 YEAR INSURANCE BACKED WARRANTY**

**BILL MOORE'S WINDOWS AND DOORS**  
A NAME YOU CAN TRUST

1 Brookside Close, Stratford-upon-Avon, Warwickshire CV37 9PL

**01789 415171 • 07729 689239 • www.billmooreswindowsanddoors.co.uk**

# Coop staff raise £50,000 for Macmillan

by **Andy Morris**  
andy.morris@bullivantmedia.com

**AN 'INCREDIBLE' sum has been raised by staff in Coventry to help cancer patients throughout Coventry and Warwickshire.**

Employees at Heart of England Co-op's Coventry headquarters and food and funeral branches have raised £50,000 for Macmillan

washes, cake sales, raffles and half marathons.

The company added £250 to the pot on behalf of anyone who raised more than that amount.

Sam Buxton, a commercial manager based at the Society's head office, in Foleshill, was one of several people who earned the bonus payment, after bringing in \$1,686 in sponsorship money for running 100 miles, cycling 50 and swimming 25 in a month.

Managers Susan Packer and Barinder Khara, who also work in the Coventry support centre, clocked up another £700 for Macmillan after jogging from Warwick to Kenilworth Castle.

Co-op chief executive Steve Browne said he could not feel prouder of his colleagues.

He said: "It speaks volumes about the people who have rallied round to make a big difference in the area they live and work in. As well as the fundraising activities of our staff, I would



Heart of England Co-op staff handed a £50,000 cheque to Macmillan Cancer Support fundraising manager Kate McGrory (third from left) at the Society's Balsall Common food store. s



Sam Buxton, left, and Charlotte Fones. Charlotte raised £700 at the Wolverhampton half marathon. s

like to thank our shoppers and members for putting their spare change into collecting tins across our stores.

"This is the highest amount raised for a charity partner since 2018 and it's an extraordinary result."

Mr Browne revealed the cause could not be closer to his heart as he lost his mother to cancer in January.

He added: "I know only too well how this disease affects people and their families. So this fundraising success feels particularly poignant and personal to me.

"The charity carries out sterling

work for individuals and families touched by cancer. I salute all the people who deliver the service, as well as those who give up their time to raise funds."

Charity and community adviser Catherine Evans said it was wonderful to see how motivated her colleagues were to support the charity.

She said: "There were so many amazing individual and team efforts in our food stores. The funeral branches made £1,600 from hosting Macmillan coffee mornings. Other fundraisers included car washes, cake sales, raffles and half marathons.

"To raise so much money has given everyone a real buzz."

The money was handed over to Macmillan at the Society's Balsall Common food store.

Jessica Zaremba, relationship fundraising manager at Macmillan Cancer Support, said: "This amazing total means we can continue offering our essential services, such as our Support Line, offering emotional and practical support to those living with cancer. We are incredibly grateful to everyone who has contributed for their generosity, commitment, and support – you truly make a difference!"

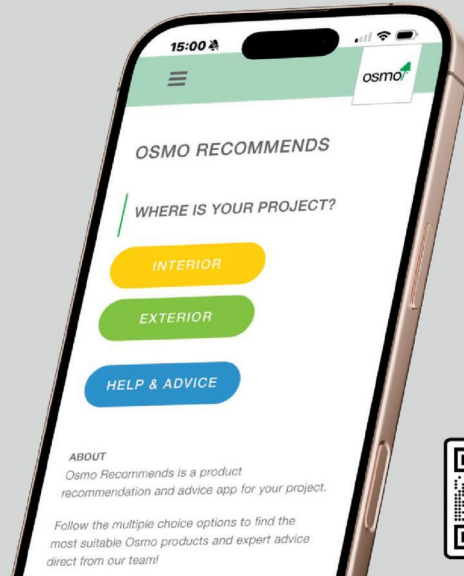
## LOOKING FOR PROFESSIONAL WOODCARE ADVICE?



The Osmo Recommends App is a quick and easy tool designed to help you identify the ideal Osmo product for any project.

By answering a few simple questions about the wood type, location, desired finish, and level of protection required, the app instantly provides tailored product recommendations along with the correct application guidance.

Whether you're working on interior or exterior projects, the app streamlines decision-making and ensures you get the best results with the right Osmo solution.



www.osmouk.com





Sebastian with his wife Fran and (RIGHT) on stage.



# Musicians together to play memorial

MORE than 200 musicians from across the region will gather for a special memorial concert celebrating the life and legacy of conductor and community music pioneer Sebastian Farrall.

Seb Farrall: A Celebration! will take place at Warwick Arts Centre on Sunday May 3 at 4.30pm, bringing together singers, orchestral musicians and community performers whose musical journeys were shaped by Seb's work.

The concert comes one year after his death in a cycling accident aged 32. Over more than a decade, he became a driving force in community music across Coventry and Warwickshire, creating ensembles where musicians of all abilities - from complete beginners to experienced performers - could sing and play together.

The event will bring together seven ensembles and performers from groups he founded, led or inspired, many of whom will share

the stage together for the first time.

All proceeds from the concert will be donated to The Music Man Project, an award-winning international charity providing music education and performance opportunities for people with learning disabilities.

Performing ensembles include Sing It Loud Choir, Coventry City of Culture Orchestra, Bad Vibrations, Stoneleigh Ladies Choir, Burton Green Choir, Coventry Salvation Army Choir and Band, All that Brass and musicians from The Music Man Project.

Together they will perform a varied programme of choral and orchestral music reflecting the breadth of Seb's musical world and the inclusive spirit that defined his work.

Sebastian was born in Bristol and discovered music through the Salvation Army, where he played drums in the band from a young age.

He moved to Coventry in 2010 to study music composition at Coventry University, graduating with first-class honours and receiving the Robert Ramskill Composition Award.

He is survived by his wife Fran, a music teacher and French horn player, and their two-year-old daughter Maisy.

Fran said: "Seb was a wonder to behold both on and off the stage, and it was an absolute privilege to be his wife. The fact that so many people want to come together to celebrate and remember him through music means such a lot to me, and I hope it will help our little girl to begin to understand what a wonderful daddy she had. My life will be forever incomplete without Seb by my side but I am so grateful for all of the love and support I have received from the musical communities that were such an important part of his life."

Visit [www.tinyurl.com/sebfarrall](http://www.tinyurl.com/sebfarrall) for tickets.

# Taking the lid off castle stories

THE UNTOLD stories of the people who once lived and worked at Warwick Castle feature in a new exhibition.

Warwick Castle Unboxed: New stories from an old castle, at Market Hall Museum in Warwick, tells over 300 years of history inspired by the Greville Family collection, held at Warwickshire County Record Office.

The culmination of a four-year project, the exhibition begins with Fulke Greville asking King James I for Warwick Castle, over three centuries ago, and features stories about the Greville family, courting scandal in Regency society and managing ambulance trains in the First World War.

Visitors to the exhibition will also discover tales of the maid tempted by an easter egg, the aardvark that nipped a footman, and the housekeeper who lent her savings to pay an Earl's debts.

On display are original documents from the Greville Family collection and objects from Warwickshire Museum collections, including the original letter from Fulke Greville to James I, and the reply he received. One of the highlights of the exhibition is a letter from Regency fashion trendsetter Beau Brummell, to Lady Sarah Savile, later Countess of Warwick, declaring his love.

Senior archivist Rob Eyre said: "This is the culmination of four years' work to make the archive more accessible. The exhibition reveals many unknown or forgotten stories about the Grevilles and the people



that interacted with them, which is very exciting. I hope that visitors to the museum enjoy discovering more about the people that made the castle a home and a place of work. We've got so many stories to tell, we haven't been able to fit them all into the exhibition. We will be sharing those stories with talks and events while the exhibition is at Market Hall Museum."

Curator of human history Sara Wear admires a dress owned by Sarah Greville. Picture by Marcus Mingins 1326001MMR

Get your hearing tested where you feel most at home.

At home.

To find out if you're eligible, or to book your free home visit, call us on 0800 089 0144 or go to [specsavers.co.uk/home-hearing-tests](http://specsavers.co.uk/home-hearing-tests)



# Spring Arrives

at the garden lover's garden centre



**Harefurlong Nurseries**  
www.farnboroughgardencentre.co.uk

A traditional garden centre that focuses on providing quality plants, garden products, homeware and gifts



**AQUATIC PLANTS**

**TUB & BASKET PLANTS**

**VEGETABLE PLANTS**

**SUMMER BEDDING**



AT  
**FARNBOROUGH GARDEN CENTRE**  
Come & visit our *Treasured Teddies* shop & see our massive selection of cuddly collectables & furry friends including especially loveable limited editions and everyday huggables

**A world of Choice**

**OPEN 6 DAYS A WEEK**  
**Tues-Sat 9-5.30pm**  
**Sun 10.30-4.30pm**  
**Open Bank Holiday Mondays**



On A423 Southam Road, Nr Farnborough, Banbury, OX17 1EL  
Tel 01295 690479  
customersales@farnboroughgardencentre.co.uk

**A world of Choice**

**WHERE THINGS FOR YOUR GARDEN WON'T COST YOU THE EARTH**



## Chance to get active for nature

NATURE lovers in Coventry are invited to a day of activity at War Memorial Park.

The park will host a day of hands-on-activities for the community as part of National Day of Action for Nature on Saturday (April 18).

The event aims to inspire residents to take an active role in enhancing biodiversity and restoring areas of nature.

Coventry City Council, in partnership with Friends of the War Memorial Park and park staff, are asking for residents' help in protecting one of the city's most valued green spaces.

The Day of Action will focus on two key projects to improve the park's ecological value.

The first is the transformation of the former footgolf course into a new bio-diverse rich habitat which will attract wildlife and open up opportunities for bird spotters and bat walks, and benefit mental wellbeing.

The second project will see the creation of a new labyrinth garden within a former bowling green, offering a tranquil space to support mindfulness and relaxation.

The day will run from 10am-2pm, with visitors able to take part in activities including

surveying and recording wildlife sightings, guided bird walks and river dips, wildflower safari, sweep netting activity, labyrinth wildflower planting, litter picking, bark rubbing, and workshops to make bird boxes, bug hotels and tables.

Coun Abdul Khan, Deputy Council Leader and Cabinet Member for Policing and Equalities, said: "The War Memorial Park is an important green space in our city, and the Day of Action is a fantastic opportunity for local residents to be a part of its future.

"By working together, we can enhance biodiversity, support local wildlife and ensure the park thrives for generations to come."

Trevor Cornfoot, the Chair of the Friends of the War Memorial Park group, added: "The Friends group was formed to help promote, develop and maintain the War Memorial Park, and this is a great example of the work we engage in.

"Our volunteer group takes part in a wide range of projects across the park and we welcome anyone to join in our endeavours.

"Both schemes have a real community value and we hope local people – of all ages – will get involved."

Visit <https://tinyurl.com/yzcb4sth> for more information.

**Mohram Ali is presented with a Good Citizen Award by Lord Mayor Coun Rachel Lancaster.**



A HUMANITARIAN has been named Coventry's latest Good Citizen.

Mohram Ali was presented with a Good Citizen Award by Lord Mayor Coun Rachel Lancaster in recognition of his life-long dedication to community service and charitable leadership.

As a founding member of the Coventry Bangladeshi Language School and a trustee and Chairperson of the Jalalabad Mosque, Mohram has helped strengthen community cohesion and created spaces of education, guidance and support for residents across the city.

His charitable work extends beyond Coventry, spanning decades of humanitarian aid to offer support for vulnerable families, flood victims, Rohingya refugees, and communities affected by global crises.

Coun Lancaster said: "Mohram's enduring service, leadership, and generosity of spirit exemplify the qualities of a true Good Citizen. He has made a profound and lasting impact on his community and inspires all who know him."

Visit [coventry.gov.uk/GoodCitizen](https://coventry.gov.uk/GoodCitizen) to nominate someone for a Good Citizen Award.



# Scammer alert for vulnerable people in borough

Elderly and vulnerable residents in Rugby are being targeted by phone scammers pretending to be police officers. s

## Fraudsters could be using a mailing list to target the elderly

by **Andy Morris**  
andy.morris@bullivantmedia.com

### A 'WORRYING' increase in 'courier fraud' in Rugby has prompted a police warning.

Elderly and vulnerable residents are being targeted by scammers who phone up pretending to be from the police and tell their victims their bank has been compromised and they are going to send a courier to pick up their bank card and pin number.

Once the card is collected, the account will be emptied.

Three such incidents have taken

place in Rugby in the space of a week.

Warwickshire Police's cybercrime and fraud coordinator, James Squire, wants people to warn friends and family who might be targeted.

He said: "I've had former architects, nurses and successful business people break down in tears in front of me because of these scammers."

"Normally we might have one or two incidents a week across the entire county, but we've had three in Rugby in the last week."

"What's more unusual is that the reports are coming from clusters of roads. We think criminals have got hold of a marketing list and they're targeting people born before 1960."

Mr Squire said warnings about courier fraud can fall on deaf ears because people think they would never fall for such scams.

He added: "Fraudsters are skilled manipulators and they rely on creating a feeling of urgency, fear and panic. We really want everyone reading this to have that conversation with the older and vulnerable people in their lives. The impact of these scams is horrendous. It's not just financial. They destroy people's sense of self-worth and confidence."

"Victims feel unsafe and panic every time the phone rings and, particularly for someone who is older, it can shake their sense of independence."

"When you talk to them, please let them know that no one from the police will ever call them and ask for any of their bank details."

"If they get a call like this – no matter who the person on the other phone says they are – they should hang up and call us, on 101."

"No one calling from the police would ever have an issue with that – they would even encourage it if the person felt unsure."

If anyone calls claiming to be from the police, hang up and call police on 101. If anyone calls claiming to be from a bank, hang up and dial 159 – a secure line which will put callers directly through to their bank.

## Teens die in crash

TWO teenagers died after the car they were in fell from a bridge onto the M1 motorway near Lutterworth.

A blue car, travelling along Gilmorton Lane towards Lutterworth, left the road bridge above the carriageway and collided with a minibus travelling southbound on the M1 shortly before junction 20, at around 1.30pm last Friday.

The two teenagers in the car were declared dead at the scene.

Four people in the minibus – a white Fiat Ducato – were taken to hospital with non-life-threatening injuries. The driver, a man, has been discharged and three women remain in hospital.

Leicestershire Police would like to hear from anyone who was driving on Gilmorton Lane or on the M1 in the area of junction 20 – in either direction – at around 1.30pm on Friday afternoon.

Anyone with dashcam footage or who saw either vehicle before the collision should visit <https://tinyurl.com/5d2cxyn> or call Leicestershire Police on 101, quoting incident number 308, of April 10.

The Electoral Commission

Remember photo ID to vote on 7<sup>th</sup> May

You need photo ID to vote in the elections in England

No ID? Apply for free voter ID today

Check accepted forms of ID at [electoralcommission.org.uk/voterID](http://electoralcommission.org.uk/voterID)



# Putting the fun in fundraiser to thank hospice for mum's care

by **Philippa Mings**  
 philippa.mings@bullivantmedia.com

A COMEDIAN is taking to the stage in Warwick in aid of the hospice that cared for her mum.

Kayleigh Jones, who was born and raised in Warwickshire and now lives in Oxfordshire, is bringing her hit show 'I Fed My Dad to a Pelican' to the Bridge House Theatre on May 6, following a successful run at the Edinburgh Festival Fringe.

The theatre is just a short distance from Warwick Myton Hospice where her mum spent her last days.

Winner of both the Spirit of the Fringe Award and Mervyn Stutter's Pick of the Fringe in 2025, the show tells the true story of how, on Christmas morning in 2010 at the age of 23, Kayleigh discovered that her dad wasn't her biological father, and the seven-year journey that followed to find him.

Kayleigh first performed the show at comedy festivals in 2023. However, she paused touring while her mum, Anne, was being cared for by Myton. Now, as the show returns to the stage, she is bringing it to Warwick with proceeds being donated to The Myton Hospices.

Anne was diagnosed with breast cancer in 2020 and, in 2023, the cancer spread to her bones. She first came to Myton for respite care in December 2023 and returned in July 2024 when her condition deteriorated.

Kayleigh said: "When mum first came to Myton, she wasn't sure she belonged



there, but before long she absolutely loved it. After our experience in hospital, where her pain wasn't well managed, arriving at Myton was a huge relief. We immediately felt we were in good hands.

"As my husband and I live in Oxfordshire, the team let us stay in the relatives' accommodation so we could be close to her when she was very poorly. After the first ten days she began to improve, and that's when she really made the place her home."

Anne personalised her room with plants, flowers, photographs and even a cool box filled with chocolate and treats. She quickly became known for her sense of humour, forming close bonds with staff.

Anne died at Warwick Myton Hospice in October 2024, just one month before her 60th birthday.

Kayleigh added: "Mum features heavily in the show – even more than my dad. Bringing the show to Warwick, just a stone's throw from where mum was cared for, feels incredibly special.

"Myton gave mum a good death. They cared for her so compassionately and supported us as a family. After seeing how underfunded hospices are, I wanted to do something that honours mum while giving back for the care she received."

Visit [www.bridgehousetheatre.co.uk/warwick-comedian-kayleigh-jones-in-aid-of-the-myton-hospices/](http://www.bridgehousetheatre.co.uk/warwick-comedian-kayleigh-jones-in-aid-of-the-myton-hospices/) for more details.

**Comedian Kayleigh Jones with her mum Anne.**

## INTERNATIONAL METALS & CABLE RECYCLING LTD

**We purchase all Ferrous and Non Ferrous Metal Batteries and Cables**

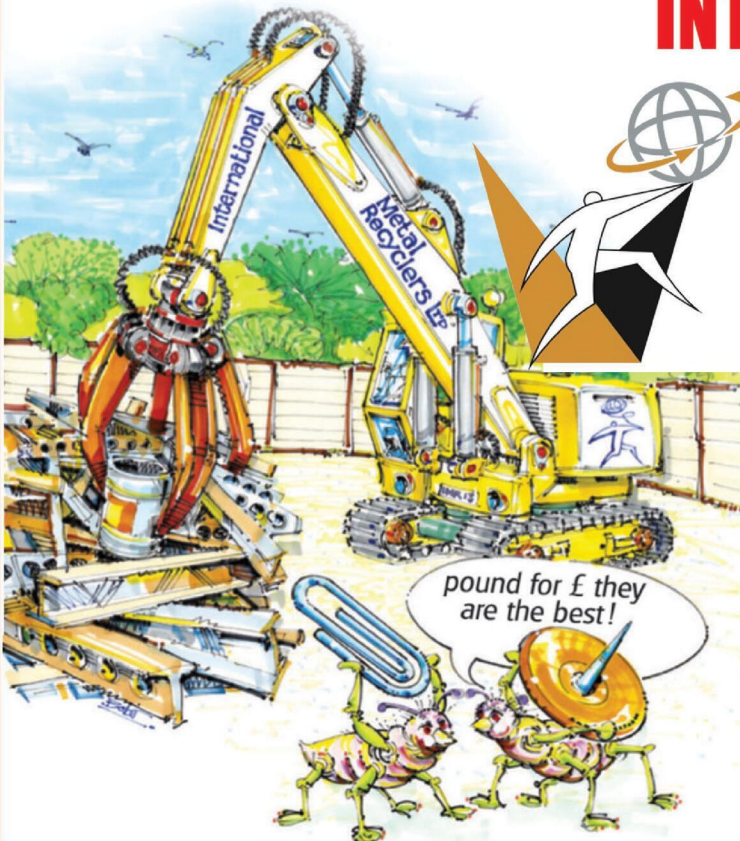
**Collection Service Available**

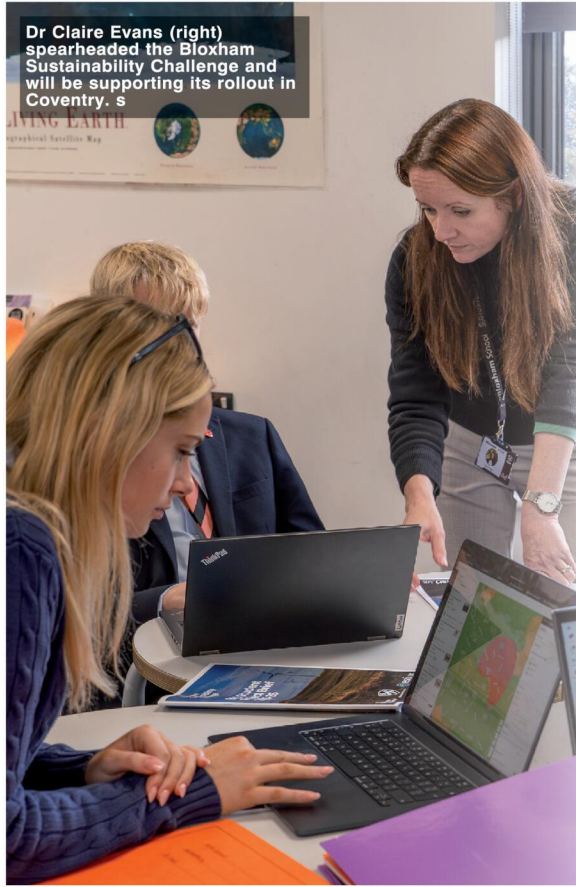
**Long Marston Road, Long Marston, Stratford Upon Avon, Warwickshire, CV37 8AQ**

**01789 721 288**

**info@imcr.co.uk**

**Open Mon/Fri - 8am - 5pm**





Dr Claire Evans (right) spearheaded the Bloxham Sustainability Challenge and will be supporting its rollout in Coventry. s

# City council backs green qualification

by Andy Morris  
andy.morris@bullivantmedia.com

**STUDENTS in Coventry are being invited to take part in a unique initiative to help them embrace sustainability, boost their qualifications and develop the green skills needed to support the future world of work.**

The Bloxham Sustainability Challenge (BSC) will be rolled out to more than 129 schools and colleges in the region this year, with Coventry City Council committing to pay the exam entry fee for every participant.

Combining classroom learning with real environmental consultancy projects, the BSC aims to empower the next generation to tackle real-world climate issues and build industry-grade digital skills.

Projects included range from planning onshore wind farms and large-scale reservoir development to mapping underground cable routes for proposed solar parks.

Once completed, the challenge awards students the Pearson-accredited Extended Project Qualification (EPQ) pathway in geospatial innovation – the equivalent of half an A-level – and helps University Colleges Admissions Service (UCAS) and apprenticeship applications.

Delivered with land and envi-

ronmental consultancy Dalcour Maclaren, and technology company Esri, the BSC uses the free geographic information system (GIS) ArcGIS for Schools online platform plus a webinar series and Dalcour Maclaren mentors for each school.

Launched by Bloxham School, in Oxfordshire in 2023, the BSC helps schools meet climate education curriculum policy goals and supports the UK government's net zero plans.

The rollout in Coventry marks the largest intake of schools embracing the BSC and meets demand for green careers.

## Sustainability

Coventry City Council says the partnership will help make sustainability a visible, everyday part of learning across the city.

Andrew Dowling, service manager for the council's outdoor education service, said: "The BSC provides an engaging and practical framework that enables pupils to explore real-world sustainability issues, develop problem-solving skills and understand their role in creating positive environmental change."

"Its integration into Coventry schools supports our wider ambition to embed sustainability across education in a way that is meaningful, curriculum-aligned and accessible to teachers and learners."

"This work reflects the strength of partnership working across the

city and our shared commitment to preparing young people for the challenges and opportunities of the future. I look forward to seeing the impact it has across Coventry schools and to continuing our work with partners who share our vision for a more sustainable future."

Claire Evans, head of geography at Bloxham School and co-creator of the BSC, said: "We're exceptionally grateful to Coventry City Council for helping us open the Bloxham Sustainability Challenge to every student who wants to take part. The power of this programme is its project-based assessment – authentic briefs, real-world challenges and teamwork – delivered like an industry placement in the classroom. With Pearson's EPQ accreditation, students earn recognition worth half an A-level while building the green, digital and professional skills that employers value."

Pippa, the mum of a recent student, said the BSC made school "feel like the workplace".

She added: "My son learned to use GIS, carried out fieldwork on a live reservoir proposal and even presented at the Esri conference."

"It's inspired him to pursue geography at university and for us, it's the best kind of education – industry relevant, exciting and genuinely confidence building."

Teachers, students and parents can visit <https://forms.office.com/e/iy2TzAJzK> to register their interest.

ADVERTISEMENT

## The French Property Exhibition is coming to **BIRMINGHAM**

- Browse through hundreds of properties from across France and speak to the agents
- Attend the free and informative seminar programme covering all aspects of buying in and moving to France
- Meet the experts - get free advice from the legal, financial, relocation, tax and visa specialists



# 16-17 MAY 2026

NATIONAL CONFERENCE CENTRE, BIRMINGHAM  
(NEXT TO THE NATIONAL MOTORCYCLE MUSEUM)

## 10AM - 5PM



**SCAN HERE TO REGISTER FOR FREE TICKETS**



HELPING YOU FIND YOUR DREAM HOME IN FRANCE FOR OVER 35 YEARS  
REGISTER FOR **FREE** TICKETS AT:  
[www.frenchpropertyexhibition.com](http://www.frenchpropertyexhibition.com)

## New French property event!

**16-17 MAY 2026**

**National Conference Centre, Birmingham**



**There's no better place to start a search for a French property than the French Property Exhibition.**

Visitors will have the chance to meet with all the property professionals they will need on their property journey, advising on everything needed for a successful purchase or move to France.

**FREE SEMINARS**

The daily programme of free seminars go into depth about buying and selling French property, deciding where to buy, understanding the French tax and legal systems, and choosing the right visa.

Visitors will receive a complimentary copy of the latest issue of French Property News magazine – packed full of expert advice, location guides and inspiring real-life Stories.

**CONVENIENT LOCATION**

The event takes place at the Britannia Suite, at the National Conference Centre, situated by J6 on the M42, with free on-site parking. The National Motorcycle Museum is just next door if visitors fancy making an extra stop.

**Here are just a few things visitors can expect to discover:**

- How the buying process works in France
- Information on the different locations and property prices
- What visa you will need to move to France
- Things to consider before buying, including inheritance planning
- Tax, mortgages, currency and insurance advice
- How to access French healthcare
- Planning for a smooth moving day
- Advice on renovation and building projects

**Register now for your free tickets to the French Property Exhibition at:**  
[www.frenchpropertyexhibition.com](http://www.frenchpropertyexhibition.com)

# First-of-a-kind exhibition highlights occupational therapy

by **Andy Morris**  
andy.morris@bullivantmedia.com

**A LANDMARK new exhibition – the first of its kind in the UK to chart the history, impact and creative power of occupational therapy – has opened in Rugby.**

Strike A Light – The Art and Science of Occupational Therapy, is on display at Rugby Art Gallery and Museum’s first floor and balcony galleries.

It is the first time an exhibition has been staged in the UK to chart the history and impact of occupational therapy, celebrating its role in helping people to get on with their lives through creativity, everyday activity and human connection.

Through immersive displays, rare archive material, interactive elements and newly commissioned artwork, the exhibition showcases the breadth and impact of occupational therapy, highlighting how therapists help people to engage in play, learning, creativity, work, relationships and self-care.

The exhibition is funded by, and has been developed with the Elizabeth Casson Trust, and curated by occupational therapists Dr Sophie Knight, of the University of Worcester, and Jemma Channing, from Arts Council England.

A spokesperson for the trust said: “Bold, inspiring and deeply moving, Strike A Light brings together art, science, archive material and lived experience to reveal how occupational therapy

supports people across a range of conditions and life experiences – particularly during times of illness, disease, injury and trauma.

“At its heart, the exhibition highlights creativity – something that links to all of us – and the everyday activities that give our lives meaning.

### Independence

“Rather than focusing on what people cannot do, Strike A Light takes a strengths-based approach, celebrating adaptability, possibility and resilience.

The exhibition demonstrates how occupational therapy enables people to reconnect with what matters to them, supporting wellbeing, identity and independence throughout life.”

One strand of the exhibition explores experiences of dementia, highlighting how creative and meaningful activity can support connection, expression and quality of life.

The work has been developed with visual artist and advocate Jessica Hartshorn, who led a programme of creative workshops with The Good Times, a monthly group at Rugby Art Gallery and Museum that engages with adults living with dementia.

The first session, held in January, invited participants to explore meaningful activities and create layered ‘book’ artworks, which feature as part of the exhibition.

Curator Jemma said: “We’re thrilled to have Jessica join us as we develop this exhibition.

“Her inclusive approach aligns perfectly with our aim to advance the profession of occupational therapy by demonstrating the power of creative activities in supporting health and wellbeing.”

Dee Christie OBE, chair of the Elizabeth Casson Trust, said the exhibition was about possibility.

She said: “Occupational therapy focuses on people’s strengths – what matters to them, what brings them joy and what they can do.

“This exhibition celebrates creativity and everyday activity as powerful tools for living well and shines a light on the positive impact occupational therapy has on all our lives.”

Strike A Light runs until May 16.



Strike A Light – The Art and Science of Occupational Therapy, is now on display at Rugby Art Gallery and Museum’s First Floor and Balcony Galleries. s

## THE JONES FAMILY JEWELLERS

IN-HOUSE  
JEWELLERY  
REPAIRS

FINE  
JEWELLERY  
EXPERTS

CASH FOR  
GOLD & SILVER

WATCH  
BATTERIES  
& RESEALS

WATCH  
STRAPS & PEARL  
RESTRINGING

SATCHWELL WALK,  
LEAMINGTON SPA  
01926 882552

TALISMAN SQUARE,  
KENILWORTH  
01926 954271

ROYAL PRIORS,  
LEAMINGTON SPA  
01926 893393

WWW.TJFJEWELLERS.CO.UK



FOR APPOINTMENTS EMAIL: ENQUIRIES@TJFJEWELLERS.CO.UK

PROFESSIONAL  
JEWELLER  
— Awards 2025 —  
RETAIL TEAM  
WINNERS 2025

# THE BED FACTORY

Trading since 1989  
3 floors full of beds  
(We are bigger than we look)

## Attention Arthritis Sufferer's

Revealed The Hidden Secret Of How To Massively Reduce Pain And Discomfort, Without The Need For Expensive Drugs Or Surgery!!!!

**6 TYPES OF ELECTRIC  
ADJUSTABLE BEDS NOW ON  
SHOW SOME WITH MASSAGE**

### Mammoth Centre of Excellence

We at the Bed Factory Leamington are proud to have been awarded by Mammoth the title of Centre of Excellence. This is due to the fully trained staff and the display of the complete range of the new Mammoth Medical grade mattresses. We are recommended by Chiropractors and Doctors for our range of pressure relieving mattresses.



CHARTERED SOCIETY OF PHYSIOTHERAPY



**2x MAMMOTH PILLOWS FREE  
with each Mammoth or  
Super King Mattress**

Look at our  
trustpilot reviews at  
[uk.trustpilot.com](http://uk.trustpilot.com)

**Mammoth new range of  
mattresses now on show.**

For the last decade Mammoth has built a reputation as a leader in health and wellbeing – the brand that brought Medical Grade™ foam and PostureCells® to the mattress market. Scientific testing, health award wins and an exclusive partnerships with the Chartered Society of Physiotherapy have made it the go-to name for those who need genuine comfort, pain relief and a great night's sleep.

Born out of healthcare and based on the pressure relieving materials used in medical beds on spinal injury units, Mammoth's secret ingredient is Medical Grade™ foam – a naturally cooling, pressure-relieving but supportive material that's shown to be far superior to standard memory foam.

Unlike memory foam, Medical Grade™ foam doesn't require heat to become pliable, nor does it lock sleepers in place where they may seize up with aches and pains. Instead, Medical Grade™ foam instantly contours to the body and provides a supportive yet flexible surface that aids natural spinal alignment.

This is complemented by Mammoth's innovative PostureCells® – independently moving castellations in the foam that provide even support but reduce partner disturbance. Importantly, the air channels between each PostureCell® also serve to wick away the moisture and allergens that typically build up through the night.

#### Testing excellence

Under laboratory conditions, Medical Grade™ foam mattresses have been found to provide **46% greater pressure relief** and **69% faster cooling** than standard 50kg memory foam. For sleepers that means:

- Improved circulation through the night
- Faster recovery and healing
- Reduced overheating
- Reduced perspiration
- Improved hygiene

Determined to go further, Mammoth also put its mattresses through testing at Northumbria University's Centre for Sleep Research. In clinical trials it was shown that Mammoth's mattresses helped sleepers **fall asleep 29% quicker**, experience a **7% increase in sleep efficiency** and report a **21% increase in sleep enjoyment**.

#### Award wins

Mammoth's unique technologies helped the brand to win a Bright Ideas in Health award for pressure relief and temperature regulation – awards usually reserved for teams working within the NHS.

These impressive results are among the reasons why Mammoth has become the go-to name for elite athletes and professional sports stars – as can be seen through partnerships with the Rugby Players' Association, British Athletes Commission and Professional Cricketers' Association over the years, as well as relationships with Premier League football teams and Olympians.

#### Combatting back pain

The unique properties of Mammoth's sleep and comfort technologies have made it the go-to mattress range for health professionals. By improving pressure relief, enhancing postural support and increasing circulation, physiotherapists in particular love the positive patient outcomes offered by Mammoth. With over 50% of adults now estimated to suffer from back pain in their lives, it's never been more important to invest in the very best sleep surface to ease pain and discomfort.

**Want to make a healthy choice and upgrade the quality of your sleep? Try the Mammoth Bed Test Centre at The Bed Factory now.**

## Leamington's Largest Independent Bed Retailer

**We can supply a large range of beds in 1 to 2 weeks - 3' Single Beds also available - WE SUPPLY WHEN OTHERS FAIL**

139 Regent Street, Royal Leamington Spa, CV32 4NX

01926 422404

sales@thebedfactory.co.uk  
and www.thebedfactory.co.uk

★ Trustpilot ★★★★★

# Spring Fair set to bring in funds

FAMILY fund-raising fun is the focus of Rugby's Spring Fair next month.

Members of The Rotary Club of Dunsmore, Rotary Club of Rugby and Rotary Club of Rugby Saturday Breakfast are working with Rugby Round Table, 41 Club and Rugby Heritage Lions to stage the popular event, which has now been running for more than 40 years.

The fair, which takes place at Whitehall Recreation Ground on the early May Bank Holiday (Monday May 4), will feature a Kids Zone with bouncy castle, face painting, a flight simulator, Wolly The Clown and a supervised creepy-crawlies handling area.

Musicians including the Rugby Ukrainian Singers will perform on stage, and Bilton Silver Band will perform in the bandstand.

Other attractions include around 60 stalls, a fun dog show, classic car displays, and food and drinks stalls.

Last year's event raised more than £14,000 for charitable causes.

Event Project Manager Simon Maguire said: "Following on from the success of last year's fair, the team look forward to welcoming over 4,000 people to the Whitehall Recreation Ground on May 4, where they will enjoy a great family day out as well as supporting local charities and businesses."

"Discounted tickets are on sale from our website for the rest of April."

Marketing Lead Willy Goldschmidt said: "We are most grateful to our sponsors AJ Ashes, Bloor Homes, Custom Heat, David Gilkes Removals, Draycote Hotel, Vets 4 Pets, Wates Construction and Welfare Together Northampton as well as numerous advertisers, who together have enabled us to host



many new performers and free attractions as well as sponsoring free children's tickets for over 300 visitors, including 70 tickets for Young Carers."

Parking near Whitehall Recreation Ground is limited. Attendees are encouraged to walk, cycle, use public transport, or make use of free parking arranged at John Barford Car Park – accessed via James Street and Railway Terrace – from 9am-6pm on the day of the event.

Visit [www.rugbyspringfair.org.uk](http://www.rugbyspringfair.org.uk) for more information, or to book tickets.

**Local musician Des Fraser performing at last year's Rugby Spring Fair.**



Left to right: May Blossom Farm CIC founding director John Frenett, Mayor Barbara Brown, CIC founding director Hannah Priest, CIC non-executive director Joyce Woodings, and Rev Alison Baxter, Associate Minister of the Mission Hub at St Andrew's Church.

**GARDEN OPEN:** A COMMUNITY farm near Rugby will be able to better benefit local schoolchildren with special educational needs and disabilities following the opening of its new sensory garden.

May Blossom Farm welcomed Mayor Barbara Brown to open the new garden.

The sensory garden provides a space where visitors with disabilities and additional needs can have their sensory needs met and enjoy nature. It was developed with funding from the Severn Trent Community Fund and Cummins Inc.

Located just to the south of Rugby, May Blossom Farm – which operates as a Community Interest Company – runs an Alternative Provision for children in secondary school, and offers other educational and green care sessions for groups from Rugby and surrounding areas.

The opening day event also celebrated the life of Dr Rex Pogson, one of May Blossom

Farm CIC's founding directors, with a commemorative plaque installed on the garden's storytelling chair by his widow Marion.

Dr Pogson, who died in 2024, was Headmaster of Lawrence Sheriff School from 1985 to 1998, and was active in the community through his work and support for community groups including The Bradby Club, The Rotary Club of Rugby and St Andrew's Church.

May Blossom Farm Directors Hannah Priest and John Frenett said, "We were so pleased to welcome the Mayor, our funders, and so many of our regular visitors to the farm to help us celebrate this major milestone that will help May Blossom Farm bring even wider benefits to our community."

"We also welcomed this opportunity to honour the late Dr Rex Pogson, one of our founding directors, whose support and strategic vision was so vital to us in our start-up period."

## Questions about care? We can help

We know moving into residential care is an emotional and difficult decision with lots to think about.

With over 30 years' experience, we can help you navigate the process of finding the right care home, so that you feel confident about the decision you make – whether that's choosing a WCS Care home, or one outside our group that's more suited to your needs.

If you've got questions about care, or one of our care homes, our Trusted Advisors can help.



Philip Rainsford



**Drovers House, Rugby**

☎ 07802 728447

✉ [p.rainsford@wcs-care.co.uk](mailto:p.rainsford@wcs-care.co.uk)



**Westlands, Rugby  
Dewar Close, Rugby**

☎ 07802 728443

✉ [j.rugg@wcs-care.co.uk](mailto:j.rugg@wcs-care.co.uk)



Josephine Rugg



# The writing's on the wall for violence against women

Rugby MP John Slinger (second from right) was among those who attended the unveiling of the mural. Picture by Adam Fradgley/Exposure Photography. s

by **Andy Morris**  
andy.morris@bullivantmedia.com

**AN 'IMPORTANT' new mural promoting a charity campaign to prevent men's violence against women and girls has been unveiled at Rugby train station.**

Avanti West Coast teamed up with local artist Emily Marlowe, the Heart of England Community Rail Partnership (CRP) and White Ribbon UK – a UK charity engaging men and boys to prevent violence against females – to create a large-scale art piece on platform two as part of its ongoing work to support the charity's mission.

Emily designed the mural – which

shows people of different genders, ages and ethnicities and the message "it takes all of us, let's work together to end violence against women and girls" – to highlight how everyone has a role to play.

Parts of the artwork use Rugby's three colour palettes, which reflect the town's history and heritage, creativity and culture, and industry and innovation.

The mural features a QR code encouraging people to make the White Ribbon promise to "never use, excuse or remain silent about men's violence against women and girls".

Avanti West Coast, which manages Rugby station, supported the mural through its Community Rail Project fund – which helps CRP initiatives to engage communities

with their railway. The installation builds on the train operator's work with Emily, Heart of England CRP, and White Ribbon UK, who created a similar mural at Birmingham International station last year.

Artist Emily said: "It's so rewarding to see how art and illustration can be used to spread important messages like the White Ribbon campaign."

### Inspiring

"I'm happy to be able to play a small part in helping to end violence towards women and girls and I hope that people find the artwork bright and inspiring and that it encourages people to find out more about the work of White Ribbon."

Rugby MP John Slinger, who

attended the unveiling, said: "The mural highlights the need for men and boys to challenge misogynistic and aggressive behaviour wherever it happens, and now visitors or people transiting our station can see the artwork and hopefully be inspired by its vital message."

"It was great to meet the artist, Emily Marlowe, whose creative talent has created a positive image encouraging everyone to take action on this important issue. She's even used the Rugby palette colours!"

Megan Lock, communications officer at White Ribbon UK, said the installation was a great example of how partnerships can bring important conversations into everyday spaces.

She added: "By working together, we can challenge harmful attitudes,

engage more people and help build a culture where everyone feels safe, respected and free from violence."

"We're grateful to Avanti, and artist Emily Marlowe, for helping bring this important message to life."

Julia Singleton-Tasker, lead officer at Heart of England CRP, said: "Since 2022, we have been working with Emily and White Ribbon UK to highlight the importance of working together to end violence towards women and girls."

"It is a privilege to partner once again with Avanti West Coast and be able to share the campaign through Emily's beautiful artwork at Rugby Station."

"Our hope is that the message is seen as a positive call on our communities to show that violence will not be tolerated."

# OUR BIG SALE IS STILL ON

## INFLATION EVERYWHERE - BUT NOT AT CARPET MILL!

Everything is going up in price, the same for Carpets and this is why it pays to go to Carpet Mill. Manufacturers of yarn and other materials for making carpets have all had price rises and some manufacturers are busy changing their specifications to many ranges to compensate. They also get surplus rolls that they cannot sell to the big stores as they don't have enough stock left to service them.

**Therefore, we are buying those rolls at a FAT DISCOUNT and passing it on to YOU.**

Everything Reduced  
BE QUICK

## BRAND NAME CARPETS AT LOW LOW PRICES

# CARPET MILL

**From quality Axminster to budget cord**

We are recommended for our low prices, quality service and extensive range throughout the Midlands. There are no R.R. prices on carpets, so if others give 50% offers or sales discounts, is it 50% off their normal high prices. ALWAYS compare with Carpet Mills normal prices!!!!!!!

**CROMWELL STREET (OFF RED LANE) COVENTRY CV6 5EY TEL: (024) 7666 1985**

SOME CUSTOMERS TRAVEL MILES - YOU DON'T HAVE TO - WE ARE HERE

[www.salecarpet.uk](http://www.salecarpet.uk)

# Change of roles at the council

THERE has been a change in the leadership at Warwickshire County Council.

Coun George Finch was re-elected as group leader at Reform Warwickshire's Annual General Meeting at the weekend - meaning he also remains leader of WCC.

But Coun James Crocker was elected as deputy group leader, after Coun Stephen Shaw decided to step down from the role to focus exclusively as WCC's finance and property portfolio holder.



Coun Finch said: "I'm delighted to have been re-elected unopposed as leader of the Reform Group on Warwickshire County Council. My group is united behind me as this administration delivers better services, safer communities and lower waste for the people of Warwickshire. We are excited to continue carrying out the mandate we were given in May last year."

"I thank my friend Stephen Shaw for his devoted service to our county and to our mission, including his hard work on the budget and for spearheading our Value for Money Programme which is delivering real savings for taxpayers."

Coun Crocker added: "I'm honoured to have received the support of the Reform Group to be deputy leader. As with all my colleagues, my commitment is to the good people of this county - they put us here, and we will deliver for them. I look forward to getting stuck into my new role."

**Coun James Crocker is the newly elected deputy leader of Warwickshire County Council.**

# New town protest welcomes support

CAMPAIGNERS against a proposed new town of some 10,000 homes near Stratford have welcomed some local political support.

The proposed development - part of the Stratford District Council's South Warwickshire Local Plan - would span some 329 hectares of green belt land - the size of some 460 football pitches - and include homes for some 16,000 potential residents. It would also require a new secondary school and up to four new primary schools as all nearby schools are at capacity.

Bearley/Wilmcote Action Group (BWAG) has been fighting a fierce campaign against the proposed development, which it believes will change the face of the south Warwickshire countryside forever.

And they have welcomed the recent Stratford District Council Conservative Party statement regarding the best way forward for the South Warwickshire Local Plan.

The Conservatives acknowledged that Bearley and Wilmcote were not suitable locations for a new large scale settlement. They identified the Long Marston development as more viable instead.

BWAG spokesperson Janine Lee said this statement represented a sensible solution to the South Warwickshire Local Plan.

She continued: "This reflects long-standing concerns within our community about the cumulative and irreversible impact that a development of up to 10,000 homes would have on



**BWAG has been fighting the proposed development, which it believes will change the face of the south Warwickshire. s**

the distinct identity of our villages and the wider rural setting surrounding Stratford-upon-Avon.

"The recognition that such a development would, over time, merge with Stratford and fundamentally alter the character of south Warwickshire is both realistic and responsible. We also strongly support the conclusion that the necessary transport infrastructure - both road and rail - cannot be delivered in a timely or viable manner to support development of this scale in our area."

"BWAG further welcomes the emphasis on an 'infrastructure first' approach, which aligns with our consistent position that development should only proceed where services, transport links, and community facilities are in place from the outset, rather than introduced

years later."

Development is already underway at Long Marston and Meon Vale.

Stratford Conservatives argue this new settlement would enable the delivery of essential amenities, retail, public services, and infrastructure, while alleviating pressure on already stretched services in Stratford.

SDC has previously stated not all the proposed locations within the plan would ultimately be needed to meet the area's needs and the council would be undertaking further analysis to conclude which locations should form part of south Warwickshire's growth strategy.

Visit [www.southwarwickshire.org.uk/swlp](http://www.southwarwickshire.org.uk/swlp) for further details.



## The Railway Touring Company





### Saturday 9 May 2026

**Steam to Carlisle.**

This trip provides a wonderful opportunity for passengers to get out and about during the spring months with the added bonus of steam haulage over the Northern Fells, including the spectacular Settle & Carlisle Railway.

We have a high speed journey down the West Coast Main Line to Carnforth, hauled by a blue Class 86 electric locomotive. We then enjoy a circular steam tour outwards via Shap to Carlisle and back via the Settle and Carlisle line.

- Departs Rugby, Nuneaton and Crewe
- From £120 per person
- Premier Dining available

### The Gumbrian Mountain Express

MAGNIFICENT LOCOMOTIVES • SCENIC JOURNEYS • FASCINATING DESTINATIONS

For more information please visit [railwaytouring.net](http://railwaytouring.net) or phone **01553 661 500**





On-board dining options available. Refreshments available to purchase on-board. Tables for two can be guaranteed in Premier/First for a supplement of £50 per person subject to availability. Prices start from £120 per person. Junior and family fares available. Booking subject to availability. The Railway Touring Company's standard conditions of booking and travel apply - see website for details. Images are for illustration purposes only - locos/trains may differ. The Railway Touring Company - The Old Stables, Estuary Road, King's Lynn, Norfolk PE30 2HL.

# Russell Lane

The Jewellers of Warwick

---

## TIME TO HAVE A SORT OUT?

---



Been meaning to do something with all those pieces you are no longer wearing?

**NOW IS THE TIME**

Gold and silver jewellery purchased.

Any amount, any condition.



---

Website: [www.russell-lane.co.uk](http://www.russell-lane.co.uk)

Tel: 01926 494 494 | Email: [sales@russell-lane.co.uk](mailto:sales@russell-lane.co.uk)

2 High Street, Warwick CV34 4AP

# Moving Forward: A Fresh Approach to Independence Has Arrived in Leamington Spa

**Max Mobility Ltd has taken an exciting step forward as its 'New Store is Now Open' in the Royal Priors shopping centre, Leamington Spa, bringing trusted expertise and a smoother path to independent living.**

Already firmly established with its flagship store in Coventry, Max Mobility has built a reputation that continues to go from strength to strength, driven by exceptional products, outstanding value, and customer care that is always a step ahead. Now, that same dedication is arriving in Leamington Spa, ready to support the local community every step of the way.



At Max Mobility, independence is never out of reach. With an extensive range of high-quality mobility solutions, customers can find the right support to keep life moving in the right direction. From mobility scooters that help you get back out and about, to powerchairs that offer comfort and control, alongside wheelchairs, riser recliner chairs and essential daily living aids, every product is designed to help customers stay active, confident, and firmly in control.

What truly sets Max Mobility apart is its people-first approach. There is no pushy sales pitch, no pressure, just honest, expert advice that helps customers navigate their options with confidence. The experienced team works closely with every individual, ensuring each solution is the right fit, not just for today, but for the road ahead.

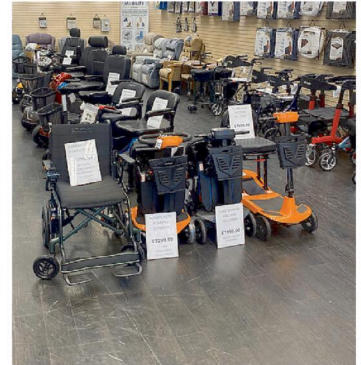
Customers can also take things at their own pace with home demonstrations, making it easier to try before they decide. With professional delivery, expert installation, and dedicated after-sales care, support doesn't stop at the door, it continues long after.

All the staff of Max Mobility Ltd, say: "We're incredibly proud to be opening in Leamington Spa. Everything we do is focused on improving people's quality of life, from the products we offer to the way we support our customers. This new store allows us to bring our expertise, our values, and our commitment to exceptional service to even more people across the region."

With its arrival in Leamington Spa, Max Mobility Ltd is helping customers move forward with confidence, regain their independence, and enjoy life without limits.



**Max Mobility Ltd, Royal Priors, Leamington Spa, opening April.**  
[www.maxmobilityltd.co.uk](http://www.maxmobilityltd.co.uk)



## MAX MOBILITY CENTRE SPECIAL OPENING VOUCHER DEALS

**NEW STORE OPENING APRIL IN THE ROYAL PRIORS SHOPPING CENTRE LEAMINGTON SPA**

**4mph Boot Scooter**  
Up to 8 miles range  
Easily Transportable

**SAVE £200**  
**WAS £799**



**OPENING DEAL £599.99**

**Four Wheel Walker**  
Folding Rollator  
Padded Seat

**SAVE £70**  
**WAS £149.99**



**OPENING DEAL £79.99**

**Riser Recliner Chair**

**SAVE £200**  
**WAS £699.99**



**OPENING DEAL £499.99**

**Light Weight Wheel Chair**

**SAVE £90**  
**WAS £249.99**



**OPENING DEAL £159.99**

**Hurricane Walking Stick**  
ONLY ONE PER CUSTOMER

**SAVE £20**  
**WAS £29.99**



**OPENING DEAL £9.99**

Wheelchairs from **£129.99** • Motorised Bath Lifts from **£279.99** • Commodes from **£59.99** • 3 Wheel Walkers from **£69.99**

**CALL TO BOOK YOUR SCOOTER SERVICE**

**07869 961147**

Max Mobility Ltd, 8 Lower Mall,  
Royal Priors Shopping Centre, Cv32 4XU  
[www.maxmobilityltd.co.uk](http://www.maxmobilityltd.co.uk)

Pictures for illustration • Prices with VAT Exemption



Detective Inspector Mark Robinson, of the county lines taskforce. s

by Sarah Mason  
sarah.mason@bullivantmedia.com

# County lines force has jailed 89 criminals

A SPECIALIST police unit has closed more than 400 drug lines and put dealers behind bars for a total of almost 550 years over the last 12 months.

West Midlands Police's county lines taskforce has dismantled drug chains which operated throughout the region.

Between April 2025 and March, officers made hundreds of arrests, closed 418 drug lines, recovered weapons and seized hundreds of thousands of pounds in cash following a series of warrants.

That helped the taskforce to put 89 criminals behind bars for a combined total of more than 545 years.

It also ensured crime doesn't pay, by clawing back almost \$500,000 of ille-

gally accrued cash under the Proceeds of Crime Act (POCA).

The force has vowed to continue the crackdown on 'county lines' networks, which commonly involve organised criminal groups (OCGs) using phone lines to move and supply drugs between areas – sometimes within towns or between regions.

Dealers typically use phone lines to send out mass messages to potential customers showing the availability of drugs and prices. In some cases they use vulnerable people, including children and those with mental health or addiction issues, to help distribute the drugs.

The taskforce often works alongside departments such as neighbourhood teams across the force's seven local policing areas, to build up information and tackle supply lines.

The team's successes have included two dealers being jailed recently for

running the 'class A Frankie line' into Birmingham city centre, Balsall Heath, Moseley and Selly Oak.

It was established the number associated with the line had received more than 81,000 calls, made 28,000 calls and sent and received 25,000 text messages between August 2023 and October 2024.

Detective Inspector Mark Robinson, of the county lines taskforce, said: "We are committed to shutting down drug networks and putting those who run them behind bars. It's very clear the taskforce is making a real impact in tackling the scourge of drugs, which not only ruin lives but also contribute to other crimes, to fund habits."

"We've managed to close down hundreds of lines and ensure dealers have been taken off the streets for a long time. Our work is never done and we'll continue to target, disrupt and destroy such criminal activity."

# Fare penalties to rise

PENALTY charges for people travelling on National Express Bus services without a valid ticket are set to rise.

From Monday, fines are set to go up to £100, fare dodgers may face prosecution and, if a court finds them guilty, could be fined up to £1,000. The change brings the system in line with other transport operators in the region.

National Express Bus is urging customers to take note of the higher penalty and ensure that they have a valid ticket for their journey.

Jacques Le Gall, senior commercial manager for the company said: "Fare evasion is something we take very seriously. While the vast majority of our customers pay their way, there is a small minority of people who think the rules don't apply to them."

"Our passengers feel it is unfair when people use bus services without paying. We hope this significant increase in standard fare charges will act as a better deterrent."

"The easiest way to buy a ticket is with 'tap and cap'. Simply tap the card reader with your contactless bank card and we will cap your fare so you don't pay more than you should. It's far cheaper than being caught or ending up in court. So there is no excuse for free-loading and it won't be tolerated."



Penalty charges for fare-dodging National Express passengers are set to rise to £100. s

## For all your Roofing and Roofline needs...

**Big enough to cope, small enough to care.**

Your local family run business established in 1983 by Roger Smith. His wife Ann headed the office, now run by daughter Donna. Sons; Craig and Marcus can be found at work on site, as well as providing your free, no obligation quotations.

All of our work is guaranteed, so your home is safe in our hands.

To find out more about our history, view recent pictures and customer feedback, please visit our website or Facebook page.

**Products and Services we offer:**

- Fascias/ Barge boards/ Soffits/ Guttering/Dry Verge
- Carports/ Over door canopies/ PVCu doors
- Composite doors/Garage doors
- Concrete (Finkloc) gutter lining or removal
- Cladding including textured timber effect (Fortex)
- Flat to pitched roof conversions
- Polycarbonate roofing/ Plastisol roofing
- Rubberbond fleecebacked or Single ply roofing
- Fibre cement roofing sheets
- Mock Tudor Planks

UPVC Fascia, Barge, Soffit & Guttering

Mock Tudor/ Replica Wood Boards

Dry Verge & Dry Ridge System

Rubberbond® FleeceBack™ EPDM Roofing

Cladding

Equinox® Tiled Conservatory Roof System

findcraftsman.com

**GUILD**

To find out more... **02476 494 491**

www.rogersmithinstallations.co.uk

rogersmithinstallations@yahoo.co.uk

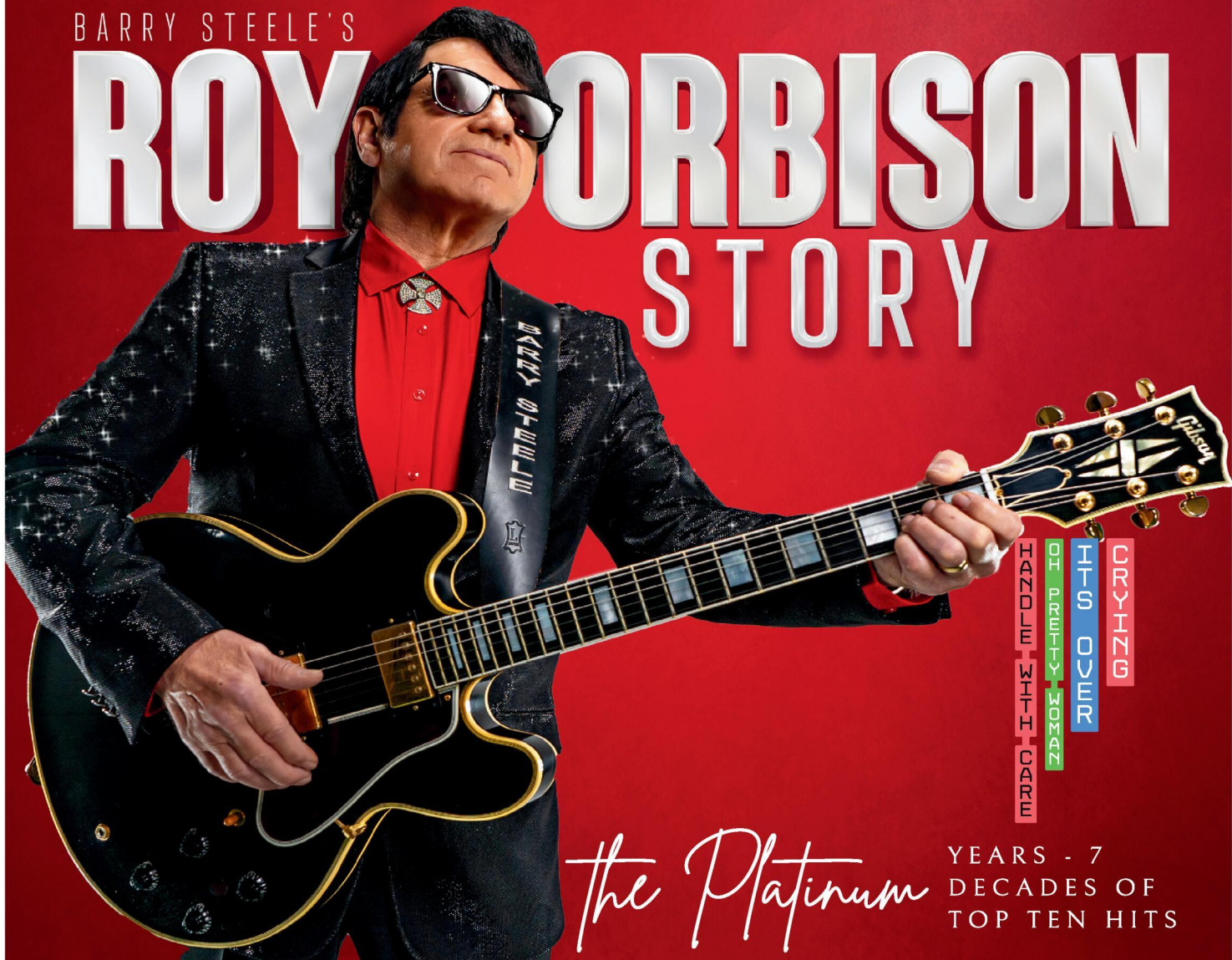
facebook.com/rogersmithinstallations

**42nd Year in Business**

# Roger Smith Installations

BARRY STEELE'S

# ROY ORBISON STORY



CRYING  
 HIS OWN  
 MIND  
 OF GREATLY  
 HANDLED WITH CARE

*the Platinum*

YEARS - 7  
 DECADES OF  
 TOP TEN HITS

CELEBRATING ROY ORBISON'S 90TH BIRTHDAY

## Bedworth Civic Hall - 18 April

Box Office Phone: 024 7637 6707 [www.bedworthcivichall.co.uk](http://www.bedworthcivichall.co.uk)

## Tamworth Assembly Rooms 23 & 24 April

Box Office Phone: 01827 709618 [www.tamworthassemblyrooms.co.uk](http://www.tamworthassemblyrooms.co.uk) - [barrysteele.com](http://barrysteele.com)

Join acclaimed performer Barry Steele for a powerful celebration of two music legends - Roy Orbison and the iconic supergroup Traveling Wilburys. Experience an unforgettable night of classic hits, world-class musicianship, and the timeless sound of some of the greatest songs ever written.

IF YOU WANT THE REAL DEAL THE NAME ON THE TICKET IS BARRY STEELE

# Severn Trent must take action

by **Andres de Miguel**

**THE ENVIRONMENT Agency (EA) has called on Severn Trent Water to take 530 actions across its wastewater network, including at sewage treatment and storm tanks.**

The EA's water industry regulation teams carried out 1,800 inspections of Severn Trent wastewater sites and, whilst 81 per cent of them complied with environmental permits, a third needed improvement.

Most permit breaches related to emission limits, operation in emergency conditions, accessible sampling point locations and monitors found in incorrect locations.

Inspections aim to prevent pollution by increasing compliance by water companies and driving operating behaviours to protect the environment.

Geoff Craig, water company regulation manager at the EA, said: "We

already carry out more inspections of Severn Trent Water than any other water company in England, due to its large number of wastewater facilities.

"Our new regulation teams have been working tirelessly, completing a record number of inspections, to identify breaches in their permits and hold them to account.

"While Severn Trent Water is an industry leader for its environmental performance, we are not allowing it to rest on its laurels."

"Over the past year, we have been attending more minor pollution incidents to make sure Severn Trent responds quickly and works to reduce the number of incidents."

Helen Wakeham, the EA's director for water, said: "In our role as regulators of the water industry, we are changing how we operate, with better data, our largest ever enforcement workforce and greater powers to do our job effectively.

"Inspections are a vital preventative measure with our teams nationally issu-

ing over 3,000 actions to water companies, including repairing sewage works and upgrading their infrastructure.

"Together, this will drive meaningful improvements in performance, hold persistent offenders to account and, ultimately, create a cleaner water environment."

On top of increasing the number of yearly inspections, the EA has also hired more regulatory staff and increased its monitoring of storm overflows to improve the water industry's environmental performance.

The extra data and information gathered from the agency's efforts will also enable it to better identify trends in water company operations and non-compliance, helping it organise its regulatory approach.

Additionally, the EA and Natural England have secured £22.1 billion in water industry infrastructure investment commitments, with Severn Trent pledging £1.5 billion over the next five years.



The company has installed almost 600,000 smart meters. **S**

## Metering is the smart way to track your usage

SEVERN Trent has installed almost 600,000 smart meters for customers across the Midlands, helping people to track their water usage and potentially save money.

The region-wide rollout of free meters began in 2021 and anyone interested can sign up by visiting the water company's website.

Severn Trent has been nudging customers to think

about their water usage, with smart meters making it easier for people to see how much they are using each day.

The meters also help the company to identify leaks quicker, so it can inform households of any issues – potentially saving hundreds of litres of water.

Stuart Leach, smart metering operations lead at

Severn Trent, said: "Leaks can cost people a lot of money, whether that is on bills or damage caused to properties.

"Many people aren't aware they're responsible for fixing any broken pipes on their property. If you have a smart meter, we can alert you to any potential leaks and let you know so you can get them fixed quickly."

"We offer plenty of advice about this – including how to find an approved plumber – on our website."

Severn Trent's smart meter programme forms part of wider plans to help customers reduce water consumption, with predictions estimating some UK regions could be facing some form of water scarcity by 2035.

# Special Family Announcements



Births, Engagements, Weddings, Anniversaries, Happy Birthdays, Congratulations or sadly Deaths and In Memory Announcements can all be placed in your **Observer** to appear in printed newspaper weekly, and online 24/7

You can call us on **01527 588688** or email details to us (including photograph if desired) with your telephone contact details and we will call you back to confirm cost [reception@bullivantmedia.com](mailto:reception@bullivantmedia.com)

Prices start from just **£15** (inc Vat)



**PHOENIX COACHES**

	Adult	Child
<b>May</b>		
5th Pub Lunch .....	£31.00	£25.00
16th Black Country Museum .....	£37.00	£24.00
26th Lunch & Entertainment .....	£37.00	
27th Skegness .....	£29.50	£24.00
30th Camden Market .....	£30.00	
<b>June</b>		
6th Gloucester Docks & Quays .....	£26.00	£20.00
13th Bath .....	£30.00	£25.00
16th Shrewsbury .....	£27.00	£22.00
13th Windsor .....	£30.00	£24.00
<b>July</b>		
4th Weston-Super-Mare .....	£29.50	£24.50
11th Chester .....	£29.00	£24.00
18th Hunstanton .....	£31.00	£25.00
22nd Cambridge .....	£29.00	£24.00
25th Wellesbourne Market .....	£16.00	£11.00
28th Cheshire Oaks .....	£29.00	£24.00
<b>August</b>		
1st Llandudno .....	£31.00	£25.00
6th Liverpool .....	£29.00	£22.00

**Scotland- Waverley Castle Hotel 27th-31st May 26. 5 Days/ 4 Nights £425 Per Person**  
 Price Includes- All Coach Hire, 4 Nights accommodation, Evening Meal & Breakfast, Day Excursions, Admission to Falkirk Wheel, and Admission to Airlwick Castle

**Liverpool- Atlantic Tower Hotel 31st July-2nd August 26. 3 Days/2 Nights £180 Per Person**  
 Price Includes- All Coach hire, Evening meal on 1st night only, 2 nights accommodation, 2 days breakfast, free time round Liverpool

**Llandudno - The Chatsworth House Hotel 10th-14th August 26 5 Days/4 Nights £395 Per Person.**  
 Price Includes- All Coach hire, 4 nights accommodation, Evening Meal & Breakfast, Day excursions, Portmerion Village & 2 course meal and Welsh Highland Railway Journey

[www.phoenixcoaches.org.uk](http://www.phoenixcoaches.org.uk)

Tel No 02476 350 811. 50 Southfield Close, Nuneaton. CV10 OBE

## Recognising the changemakers

PEOPLE who make a difference in Warwickshire are again set to be recognised.

As her year in office draws to a close, high sheriff Karen Lynch has confirmed that Warwickshire Changemakers will return for 2026 - celebrating the people who make an extraordinary contribution to life across the county.

Last year's inaugural event recognised 100 people at an investiture-style ceremony attended by families and civic leaders from across the county.

They included volunteers, community champions, innovators and individuals who have strengthened Warwickshire through public service or acts of kindness.

The 2026 celebration will take place on Tuesday August 4 and celebrate another 100 Warwickshire Changemakers.

The ceremony at St Mary's Church in Warwick will see the 2026 Changemakers receive formal recognition, before joining a procession through the town to Warwick Castle for an evening celebration.

Ms Lynch said: "My year as High Sheriff has been about showing how, through collaboration, we can bring out the very best of Warwickshire and make it a better county for all of us.

"Throughout the year I have seen countless examples of collaboration across our public services, charitable organisations, community groups and individuals.

"The Changemakers celebration itself is another powerful example of what can happen when people come together for positive impact. Last year's inaugural event recognised 100 truly incredible individuals who set the benchmark through their achievements and service to others.

"I'm delighted that we will once again bring together around 500 people this summer to celebrate another 100 Warwickshire Changemakers in front of their families and the county's civic leaders."

Visit [www.highsheriffofwarwickshire.co.uk](http://www.highsheriffofwarwickshire.co.uk) for more details on how to nominate someone as a Changemaker.

# More residents urged to open their homes

COMPASSIONATE Warwickshire residents are finding 'purpose and hope' by opening up their homes to families fleeing war in Ukraine - and new hosts are being encouraged to come forward.

For the past four years, communities across Warwickshire have quietly been transforming lives by offering safety, stability and security to refugees under the Homes for Ukraine scheme.

Warwickshire County Council is encouraging anyone who is able to offer similar support to find out more about the scheme and sign-up as hosts.

When Leamington couple John and Dora decided to become sponsors under the Homes for Ukraine scheme in 2022, they expected to host one family for a short time - but four years on, they have supported several Ukrainian families as they rebuild their lives in Warwickshire.

They helped children enrol in local schools, supported parents with job applications and spent evenings around the kitchen table helping with English homework.

The families they hosted are now living independently, working locally and fully part of the community.

In Rugby, Yvonne opened her four-bedroom home to a single woman and a mother and daughter.

She said: "Warwickshire County Council Homes for Ukraine team has been incredibly supportive.

"Helping my guests with English classes, job centre appointments and other necessities has been a deeply rewarding experi-



Families fleeing war in Ukraine have started building new lives in Warwickshire under the Homes for Ukraine scheme.

ence. Hosting has brought purpose and hope to my life as well."

Sonja, from north Warwickshire, has helped multiple guests navigate life in the UK, from registering for healthcare to finding local employment.

She said: "Hosting has been a challenge, but also one of the most rewarding things I've done. Seeing my guests integrate into the community and begin new lives makes every effort worthwhile."

Warwickshire County Council leader Coun George Finch said: "The generosity of Warwickshire residents has made a real and lasting difference.

"Sponsorship is about more than provid-

ing accommodation - it is about offering stability, dignity and the opportunity to rebuild.

"The war in Ukraine continues, and more people need help from our communities. We are looking for residents willing to host and help refugees start a new life.

"The Homes for Ukraine scheme relies on the kindness of Warwickshire residents to make a difference to those affected by the conflict."

Visit [www.warwickshire.gov.uk/ukraine-2/information-residents](http://www.warwickshire.gov.uk/ukraine-2/information-residents) for more information. Call 0800 408 1447 or email [ukraine@warwickshire.gov.uk](mailto:ukraine@warwickshire.gov.uk) to get involved.

just go.holidays



By Coach from Coventry, Rugby

Reader Travel

Observer



### Balmoral Castle & the Scottish Highlands

Departing Sun 31 May '26

Let the raw beauty of the Scottish Highlands capture your imagination on this 7-day tour. Highlights include Balmoral Castle, Loch Ness, the Strathspey Steam Railway and Highland towns like Aviemore and Ballater...as stirring as the bagpipes themselves!

#### SO MUCH INCLUDED...

- ✓ Return coach travel from Rugby, Coventry
- ✓ First & last night at a selected hotel (JG3 rating) with dinner & breakfast
- ✓ 4 nights at the Coylumbridge Resort Hotel, near Aviemore (JG2+ rating) with dinner & breakfast
- ✓ Journey on the Strathspey Steam Railway
- ✓ En-route visits to Stirling & Gretna Green
- ✓ Excursions to Blair Castle & Gardens, Aviemore, Fort William, Balmoral Castle, Ballater, Inverness & Loch Ness Visitor Centre

▶ **SAVE £30 - Quote OSG**  
- Book by 01 May 2026

7 Days by Coach **only £789**

Single Supplement £230



### Torquay Cruise & Devon Steam

Departing Mon 6 Jun '26

Enjoy the sights of the beautiful English Riviera and the welcome of Torquay on this great-value break that features a packed itinerary of excursions, a delightful heritage railway journey, a scenic cruise on the River Exe and much more!

#### SO MUCH INCLUDED...

- ✓ Return coach travel from Rugby, Coventry
- ✓ 4 nights at the Burlington Hotel, Torquay (JG2 rating) with dinner & breakfast
- ✓ Entertainment some evenings
- ✓ Heritage train journey on the South Devon Railway
- ✓ Cruise on the River Exe
- ✓ Free time in Exmouth
- ✓ Excursion to Buckfast Abbey & Buckfast Butterfly Farm & Dartmoor Otter Sanctuary

Optional excursion to Teignmouth (£12pp)

5 Days by Coach **only £399**

Single Supplement £75



### Andrea Bocelli Live in Tuscany

Departing Mon 20 Jul '26

Don't miss the chance to see the world's most famous tenor, Andrea Bocelli, perform in his hometown of Lajatico this July. Taking place in the open-air Teatro del Silenzio amidst the rolling hills of Tuscany, it promises to be an unforgettable experience.

#### SO MUCH INCLUDED...

- ✓ Return coach travel & ferry crossings from Rugby, Coventry
- ✓ First & last night at the Selected Hotel, Tuscany, Italy (JG3+ rating)
- ✓ Additional overnight stay on outward & return journey on a half-board basis in Grenoble
- ✓ 5 nights at a selected hotel in Tuscany (JG3+ or JG4 rating) with dinner & breakfast
- ✓ Welcome drink & fruit & water in room on arrival (Italy hotel only)
- ✓ Portage where available
- ✓ Concert ticket for Andrea Bocelli at the Teatro del Silenzio
- ✓ Excursion to Pisa & Lucca
- ✓ En-route visits to Macon & Beaune

10 Days by Coach **only £1499**

Single Supplement £450

For more information, or to book, please call

**03332 342 514** Quote OSG

or visit us online at

[justgoholidays.com/OSG](http://justgoholidays.com/OSG)

033 numbers are free within inclusive minutes packages otherwise standard rates apply.



These packages are subject to just go.holidays terms & conditions. Coach bookings are protected by Bonded Coach Holidays & the Association of Bonded Travel Organisers Trust Ltd. Air holidays are ATOL protected No. 10639. Prices are per person based on two people sharing a room & holidays on bookings made up to 10 days post publication, after which prices may fluctuate. Calls to 033 numbers are free within inclusive minutes packages, else standard rates apply. Choices of date, hotel, a port or pick up location may incur a supplement. Please see website or call for full details.





Deputy police and crime commissioner Emma Daniell: "I am determined that we use insight and evidence to drive better outcomes for victims". s

by Philippa Mingins  
philippa.mingins@bullivantmedia.com

**VICTIMS of crime in Warwickshire are being encouraged to have their say in a national survey that aims to improve across the criminal justice system.**

Deputy police and crime commissioner Emma Daniell, victims' lead for the Office of the Police and Crime Commissioner (OPCC) and chair of the Warwickshire Victims Board, is backing the 2026 Victims' Survey, launched by the victims' commissioner for England and Wales.

The survey is open to anyone aged 16 or over who has experienced crime in the past five years, whether or not it

was reported to the police. It asks about victims' experiences of support services and the wider criminal justice system and is being used to shape national recommendations for reform and improvement. The survey is open until May 6.

Ms Daniell said: "Listening to the lived experience of victims is central to how we improve support in Warwickshire and this national survey is a vital opportunity for victims to be heard."

"It does not matter whether someone reported what happened or not - every experience counts."

"As victims' lead for the OPCC and chair of the Warwickshire Victims Board, I am determined we use insight and evidence to drive better outcomes for victims. Surveys like this help us understand what is working, where the system is

# Victims of crime offered chance to improve system



When the chips are down: The Stratford seizure. Picture by Stratford Police. s

## You've had your chips

A WHOPPING portion of chips has been taken off the menu by police in Stratford.

Officers seized 1.7 tonnes of ready-cut chips while taking part in an operation to crack down on food standards breaches.

The mountain of pre-prepared chips, and spuds-in-waiting to become chips, was among improperly stored food at premises raided by police and environmental health officers from Stratford District Council, Warwickshire County Council Trading Standards and immigration enforcement.

Stratford Police reported on its Facebook page: "Environmental health seized incorrectly-stored food, including a whopping 1.7 tonnes of ready made chips ... safe to say

that's one chippy tea that won't be happening any time soon."

The find followed sweeps of Stratford businesses alongside environmental health staff.

Police said the full consignment was voluntarily surrendered and destroyed on the same day.

Police described the operation as "a coordinated effort to keep things safe, fair and running smoothly".

Environmental health officers looked at hygiene, waste and workplace safety issues, the force stated, leading to seizures of "incorrectly stored food", including the chips.

Immigration enforcement officers had checked right-to-work compliance while trading standards focused on counterfeit goods and fair trading.

# TRUST MARK

# Checkatrade

# Rated people

better homes · better work · better lives

## Roofing Installations Ltd

# Yell

### PROFESSIONAL & FRIENDLY SERVICE

### Gutter Cleaning from £25



- NEW ROOFS • FLAT ROOFS • DRY RIDGE/VERGE • ROOF CLEANING
- EAVES PROTECTIVE SYSTEMS • UPVC FASCIAS, SOFFITS & GUTTERING
- ALL TYPES OF ROOFING REPAIRS

## A local based company in Rugby covering surrounding areas

## 07475 891709

## 01788 227160

# www.trustmarkroofing.co.uk

# CARING People CARING Places



## More than a job: Everyday care, extraordinary impact

**Behind every strong community is a web of quiet miracles – people whose compassion isn't always seen but is always felt.**

Care doesn't always wear a uniform. It doesn't always carry a job title. Sometimes, care looks like a retired teacher offering literacy lessons at the local library. Sometimes it's a neighbour knocking on a door because the curtains haven't opened by lunchtime. Sometimes, it's a teenager patiently explaining a smartphone to a grandparent at a tech drop-in session. These acts might not make headlines – but they shape lives.

Across our towns and villages, community care is alive in places you might not expect. The barista who remembers how you like your coffee after a hard week. The postie who notices the mail piling up and alerts someone. The bus driver who waits that extra minute because they know one of their regulars can't walk quite as fast these days. These are the moments that quietly stitch care into the everyday.

Take a walk down any high street, and you'll find more than just shops – you'll find anchors of empathy.

In the corner café, a "pay-it-forward" board lets strangers buy a coffee for someone in need. In the hair salon, stylists lend an ear as much as a comb, becoming trusted confidants. In the local pharmacy, staff take the time to explain medication in a way that reassures and

empowers. These are frontline caregivers, even if they'd never call themselves that.

Then there are the "accidental carers" – friends, neighbours, even children – who step into roles not because they have to, but because they care. A teenager helping an elderly neighbour with groceries. A colleague offering lifts to medical appointments. A community rallying to fundraise for someone's life-changing operation abroad or football kit for the U12s. These aren't isolated stories. They're a pattern. A culture of looking out for one another.



And let's not forget the community hubs that give this care a home. Food banks, warm spaces, baby banks, repair cafés, men's sheds, mutual aid groups – many run entirely by volunteers who ask for nothing but offer everything. These places aren't just practical lifelines. They're emotional ones too. They say: you are not alone.

There's also a powerful movement growing around mental health care in the community. From peer support groups and walking clubs to drop-in counselling services and crisis cafés, these spaces are doing what the larger

system can't always manage: providing timely, accessible, person-to-person support. No long forms, no waiting lists. Just presence. Just listening.

We live in a world that moves fast, values productivity, and often forgets to pause for one another. But these everyday examples prove that care hasn't disappeared. It's just gone local. Grassroots. Personal.

And it's not all about grand gestures. It's the consistent ones that matter most. The weekly phone call. The check-in text. The smile that says "I see you." These are small acts with seismic impact – especially for the isolated, the grieving, or the quietly struggling.

So what if we measured success in empathy? What if we valued a kind heart as highly as a sharp mind? What if we recognised care not as a soft skill, but as a superpower?

Because here's the truth: Care isn't just something that happens to us when we need it. It's something we give, something we build. It's a culture we grow, day by day, in homes, in workplaces, in playgrounds and pavements and park benches.

And the more we celebrate those who care – not just professionals, but everyday people – the more we nurture that culture. The more we say: this matters. These people matter.

So let's keep telling these stories. Let's keep spotlighting the gentle, powerful work of caring people in caring places.

Because they aren't just holding others up – they're holding the whole community together.

ADVERTISEMENT

# bluebird care<sup>®</sup>

## Free Health & Wellbeing Checks in Coventry: Helping You Stay One Step Ahead

At Bluebird Care, we know that staying fit and healthy is key to keeping your independence at home. We also understand how crucial early detection of any signs of potentially declining health is for your ability to bounce back quickly. That's why we offer Health and Wellbeing checks in your home, designed to bring peace of mind to both you and your loved ones.

### What is a Wellbeing check?

A senior member of our team will visit your home, bringing with them a Wellbeing kit (a "blue box") to check that your vital signs are stable. We use a nationally recognised and NHS used scoring system, giving confidence in our findings to your local healthcare professionals.

If early warning signs are detected or require investigation or intervention, we'll let you know right away and alert relevant healthcare professionals.

### NEWS2

NEWS2 (National Early Warning Score) is a tool developed by the Royal College of Physicians which improves the detection and response to clinical deterioration in adult patients. It is recognised by GPs, paramedics

and all healthcare professionals within the NHS and beyond, and provides an objective and universally-understood means of communicating your condition, which can help, for instance, expedite the arrival of the emergency services at your door if necessary.

### Vital Signs

**What vital signs do we check?** Our fully trained team monitor several key health indicators, including:

### Blood Pressure and Pulse Rate

A blood pressure test checks if your blood pressure is healthy, high, or low. Low blood pressure (hypotension) is usually not a problem, though it can cause dizziness and fainting. High blood pressure (hypertension) increases the risk of serious conditions like heart attacks and strokes if left untreated. A quick test, along with a pulse check, helps assess heart health and could save your life.

### Temperature

A high temperature could indicate a fever or infection, while a low temperature might suggest other health concerns.

### Breathing and oxygen levels

Pulse oximetry is a test to measure the level of oxygen in your blood. This is called your oxygen saturation level. Pulse oximetry can help to understand if you might have a lung condition. It can also be used to monitor an existing lung condition.

### Alertness & General wellbeing

Changes in how awake or responsive someone is can be an early sign of illness, dehydration, or medication effects.

### Regular health checks at home

Complimentary Health and Wellbeing checks will be carried out at all Assessments and Reviews of Care but are available on request as part of your ongoing care arrangements if needs or preferences require. And, as with all our care plans, this service is flexible, so it can be adjusted as needs evolve.

### Want to learn more?

If you think regular health and wellbeing checks would benefit your loved one, don't hesitate to reach out to your Bluebird Care Sevenoaks office. We're here to help.

*Disclaimer: it is important to note that our team who operate the*



*equipment are not medical professionals and cannot interpret, intervene, or offer advice themselves. Readings from the implements contained with the "blue box" are relayed via Bluetooth to a central database via a tablet. Your NEWS2 score is then generated automatically. A reading above a certain level prompts a call to your GP or possibly the emergency services. Whatever the concern, early detection and*

*communication enables quicker assessment and treatment. The Health and Wellbeing Check is a free, optional service available exclusively to existing customers as part of their care plan. It is also offered during newly booked assessments for potential customers. Participation is entirely voluntary.*

**For Further details see our main advert opposite.**

Peter

Coventry

bluebird  
care®

Carers who look  
after *everything*.  
So you don't  
have to.



We're here so your loved one can stay home, where they want to be. Where things are safe and familiar and they have the best chance to live a full and meaningful life.

Whether it's everyday companionship or everyday errands, Live-in Care or Home Care visits, our highly-trained Care Experts will give your loved one the support they need to live in the place they feel best: home.

See how we can *support you*.

It's good to  
be *home*

Call us for a friendly chat on

02475 263300

Or email

coventry@bluebirdcare.co.uk

*Find  
out more*



**WITH A 'NEW DOOR' KITCHEN MAKEOVER..**  
 the difference is  
**BLACK & WHITE!**



SAVE upto  
**33%**  
 on Doors

**PLUS**  
 FREE  
 Soft-Close  
 hinges!!

**NEW DOORS**

**NEW HANDLES**

**NEW TRIMS**

**NEW PANELS**

**NEW OVENS**

**WORKTOPS**

[doorsandworktops.com](http://doorsandworktops.com)

This month why not give your kitchen the 5 Star treatment for much less money by just changing the **Worktops, Doors** and **Handles**. It's quicker, less hassle and **costs much less**, and, with our current Sale of 33% off, you'll **SAVE even more!**

**We now offer FREE home quotes**

KITCHEN  
**Doors**  
 & WORKTOPS

**0330 321 0461**

**NEW PLINTHS**

**NEW DOORS**

'Kitchen shown:  
 Tones of Grey'

Kitchen Door Company are part of the Doors Group.  
 Doors House Wordsley West Midlands Request a FREE brochure or home quote today

# Get planting now to give your garden a head start for summer

APRIL is when the gardening season comes into its own.

Not only is it a busy month for gardeners in general, but it also sees the start of National Gardening Week, April 28 to May 4.

Weather permitting, gardeners can get a head start on growing plans, whilst keeping an eye out for any late frosts that might threaten your efforts. It's always a good idea to have some cloches or horticultural fleece close to hand to protect seeds and young plants, just in case the temperature dips.

A good way to ensure some heat stays in the ground, and that also provides much needed nutrients to growing areas, is to apply a layer of mulch around perennials, trees and shrubs.

If this is done once you have weeded then the surface of the soil will have been loosened and the mulch will help conserve ground moisture and make weeding later on easier.

You can use home grown garden compost or buy bagged mulch from garden centres. Shovel it in between the plants, and spread to a depth of about 5cm. Work from the back to the front of beds to avoid walking on the newly mulched areas.

It's also a key month for planting fruit and veg in the garden, and from now on until late autumn

you will be sowing, planting and harvesting.

Finish off sowing seeds for early lettuces, summer carrots, dwarf peas, summer spinach and broad beans and start sowing beetroot, brassicas (broccoli, cauliflower, sprouts and cabbage), peas, turnips and swede.

Weather dependent, first early potatoes can also be planted.

And for beginners, some of the easiest fruits to grow are berries - strawberries and blueberries love containers and both will crop heavily once established.

Another plant that loves container life (as well as being in borders) is Lavender - and April is the perfect time to plant it so that you can enjoy it throughout the summer.

It's a favourite with gardeners not just for its beautiful form and fragrance but also because it attracts essential pollinators such as bees and butterflies.

Most gardeners get the urge to plant it in their garden sooner or later as it can add real value with its scent and shades of purple flowers and silver leaves.

To successfully grow lavender, it needs to be planted in a warm, well-drained soil with full sun - and it doesn't like 'wet feet' as it promotes root rot and 'dampness' is often the reason that it doesn't perform well.



Lavender can be planted out in April.

It's a tough plant though and once established only requires regular pruning after flowering has finished in the Autumn.

If there is one job to be done this month it's to plant out some sweet peas. Their fragrant blooms are an essential part of summer and perennial varieties come back year after year.

Sweet peas need plenty of feed and moisture, so add compost or well-rotted manure to the soil. Water the plants in their pots before planting out and get supports ready to position at the same time.

Plant sweet peas 20cm apart, pinch out the tops of leggy stems and protect them from slugs.

Some of the other garden jobs for April suggested by the RHS are:

- Keep weeds under control
- Start sowing seeds outdoors
- Sweet peas can be sown and planted outside
- Plant out main crop potatoes
- Plant new pond plants and divide waterlilies
- Sow new lawns or repair bare patches
- Lightly cut back lavender to stop it getting too leggy or woody
- Last chance to prune climbing or rambling roses
- Divide bamboos
- Protect fruit blossom from late frost



## WARWICK BUILDINGS

**Warwick Buildings**  
Nightingale Lane,  
Southam Road,  
Long Itchington, Southam  
Warwickshire CV47 9AT  
*(For SatNav please use  
CV47 9QZ)*

**Tel: 01926 815757**

*The UK's leading suppliers of*

- Garden Offices
- Garden Rooms
- Garden Office Pods
- Garden Studios
- Garages
- Office Pods
- Posh Sheds





**Opening Hours:**  
Monday to Friday between 8:30am and 5pm  
Saturday between 9am and 1pm  
*(By Appointment Only)*

f

warwickbuildings.co.uk

@

## SUDOKU

Complete the grid so that every row, every column and every 3 x 3 box contains every digit from 1 to 9.

### EASY

	8	6		3	5			
9		1						3
	2		1		4	8		
	3	9		4				8
4	7		3				6	2
6			2	9				5
					3		9	
	9			2		6		5
8		2	7	5		1	4	

### HARD

5				9				4
		9					1	
	4							2
	3		1	9				8
	9		6	8	2			4
	2		5	3				6
	7							3
		8					7	
3				5				6

## PATHFINDER

Beginning with the top highlighted letter, follow a continuous path of words associated with the given subject. The trail goes through each letter once, twisting up, down and sideways, but never diagonally.

### Fish

J O R I N K S D U C T I C A R  
 O D Y P R E A Y A K S L K P R  
 H N G H F F L M B M B E E L O  
 D L O S I F N O B O A C R F T  
 E H I N P U S W H S I K E I S  
 N S R E G L R O R D F M K S H  
 I P E L N I E I B U T A C T U  
 L L C E O W T T A N N I F E R  
 C E T R B T R T R H O B L U G  
 H E C I N I O U E C V Y N O E  
 A R E M P A R K D N A R L O N  
 J D D E S N D R S N P E E M S  
 A C K Y S A P A H A P A R R O  
 S I E S D H E G S S A C U A L  
 H F L M A C R N I K B A D B E

Solutions opposite

## CROSSWORD

1		2		3		4	5		6		7
					8						
9											
10							11				
	12			13			14				
15						16					17
18						19		20			
21											
22							23				

### ACROSS

- Curb (6)
- Swordsman (6)
- Absolute (13)
- Integrity (7)
- Deal with (5)
- Essential (5)
- Tearful (5)
- Watchful (5)
- Emit rays (7)
- Interchange (13)
- Loophole (6)
- Disclose (6)

### DOWN

- Purchased (6)
- Thoughtless (13)
- Golf course (5)
- Letter (7)
- Thoughtful (13)
- Tell (6)
- Prophetess (5)
- Stage performer (7)
- Cows (6)
- Wilt (5)
- Springlike (6)
- Impel (5)

Scribble pad

## LADDER

Using the clues provided, fill in each step of the ladder with a new word, changing one letter at a time.

- Heal
- Centre
- At the front
- Castle
- Unit of length



## NINER

Each number from 1 to 9 represents a different letter. Solve the clues and insert the letters in the appropriate squares to discover a word which uses all nine letters.

- 43287 gives a wading bird;
- 623978 gives a small animal;
- 1289573 gives a large animal.

1	2	3	4	5	6	7	8	9
---	---	---	---	---	---	---	---	---

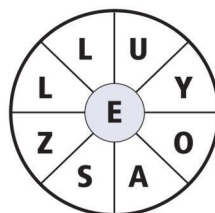
## CODEWORD

This puzzle has no clues. Instead, every number printed in the grid represents a letter, with the same number always representing the same letter. For example, if 8 turns out to be a V, you can write in V wherever a square contains 8. Using your knowledge of words, complete the puzzle.

	24	16	9	2			6			24	10	10	5
A													
B		24			10	15	R	A	5	5		24	21
C							8			1	7	13	15
D	11	15	13	20	24								11
E													
F		9				23		1		13		23	24
G													
H		24	16	14	21	16	24	24	15		16	26	18
I													
J	12					11		23				21	13
K													
L	13	11	11	19	24	11		4	26	1	20	24	2
M													
N	16		21				6			17			5
O													
P	12	8	5			6	13	15	3	2	13	15	11
Q													
R	21			1		24		24		14			15
S	12	24	24	9	24		24		24	25	8	13	19
T													
U	24		15			11	26	22	24	16			18
V													
W	5	24	16	11			24			20	24	19	12
X													
Y													
Z													

## WORDWHEEL

You have 10 mins to find as many words as possible using the letters in the wheel. Each must use the hub letter and at least 3 others. Letters may be used only once. You cannot use plurals, foreign words or proper nouns. There is at least one 9-letter word to be found.

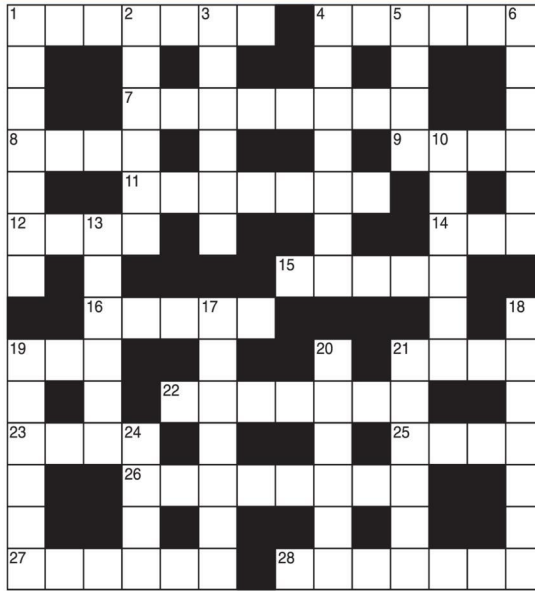


How you rate  
 8 words: average  
 12 words: good  
 16 words: very good  
 20 or more: excellent.

# GENERAL KNOWLEDGE CROSSWORD

## ACROSS

- fever is an acute infectious disease also called enteric fever (7)
- Strong-smelling, pungent-tasting bulb used as flavouring in cookery (6)
- See 23 Across
- 8 & 5 Down. Famous racehorse of the early 1970s who had victories in the Derby, Eclipse, King George and Arc de Triomphe (4,4)
- 24 Down. Type of design used in knitwear, named after a Shetland Island (4,4)
- Harem or zenana attendants historically in Eastern countries (7)
- Party or faction in a religious body (4)
- Greek god of flocks and shepherds (3)
- Last letter of the Greek alphabet (5)
- State capital of Idaho, U.S.A. (5)
- See 26 Across
- 21 & 22. Novelist whose best-known work is Frankenstein, or the Modern Prometheus (4,7)
- See 21 Across
- 23 & 7 Across. Sparkling Italian wine (4,8)
- Garment made from a length of cloth wrapped round the body (4)
- 26 & 19 Across. Part of the north Atlantic, notorious for its floating seaweed (8,3)
- Well-known orchestral work by Ravel (6)
- A group of volcanic islands in the North Atlantic, west of Morocco (7)



## DOWN

- The mast next above the lower mast on a sailing vessel (7)
- Various internal parts of an animal, especially a pig (6)
- South American lizard (6)
- A kind of cotton cloth, usually striped or checked (7)
- See 8 Across
- The ferryman of the Styx, in classical mythology (6)
- Peruvian animal, related to the llama, with long woolly hair (6)
- Silvery-white metal whose chemical symbol is Co (6)
- Type of lively movement which developed from the minuet (7)
- The generic name of the lilac (7)
- Another name for the dung beetle (6)
- The liquid part of blood, lymph, etc. (6)
- Former name of Karnataka state, India (6)
- See 9 Across

# SOLUTIONS

ACROSS: 1 Typhoid; 4 Garlic; 7 Spumante; 8 Mill; 9 Fat; 11 Eunuchs; 12 Sect; 14 Pan; 15 Omega; 16 Boies; 19 Sea; 21 Mary; 22 Shelley; 23 Asti; 25 Sart; 26 Saragasso; 27 Boker; 28 Madeira. DOWN: 1 Tompat; 2 Haslet; 3 Ijuana; 4 Gingham; 5 Reel; 6 Charon; 10 Alpac; 13 Gobal; 17 Scherzo; 18 Synrga; 19 Scarab; 20 Plasma; 21 Mysore; 24 Isle.

## General Knowledge Crossword

ACROSS: 1 Bridle; 4 Fencer; 9 Unconditional; 10 Honesty; 11 Treat; 12 Vitral; 14 Weepy; 18 Alert; 19 Radiate; 21 Transposition; 22 Eylet; 23 Reveal. DOWN: 1 Bought; 2 Inconsiderate; 3 Links; 5 Epistle; 6 Contemporary; 7 Relate; 8 Sibyl; 13 Artiste; 15 Cattle; 16 Droop; 17 Vernal; 20 Drive.

## Crossword

ACROSS: 1 Shark; 2 Rainbow Trout; 3 Red Snapper; 4 Anchovy; 5 Bluefin Tuna; 6 Mackerel; 7 Parrotfish; 8 Sturgeon; 9 Lemon Sole; 10 Barracuda; 11 Basking John Dory; 12 Pink Salmon; 13 Swordfish; 14 Bombay Duck; 15 Stickleback; 16 Zealously. DOWN: 1 Dempsy; 2 Sandperch; 3 Damselfish; 4 Biting; 5 Fufffish; 6 Golden Shiner; 7 Electric Eel; 8 Pilchard; 9 Jack.

## Niner

ACROSS: 1 Shark; 2 Rainbow Trout; 3 Red Snapper; 4 Anchovy; 5 Bluefin Tuna; 6 Mackerel; 7 Parrotfish; 8 Sturgeon; 9 Lemon Sole; 10 Barracuda; 11 Basking John Dory; 12 Pink Salmon; 13 Swordfish; 14 Bombay Duck; 15 Stickleback; 16 Zealously.

## Wordwheel Pathfinder

1=C, 2=Y, 3=M, 4=J, 5=S, 6=F, 7=H, 8=U, 9=Y, 10=B, 11=A, 12=P, 13=A, 14=G, 15=R, 16=N, 17=X, 18=W, 19=L, 20=K, 21=L, 22=Z, 23=L, 24=E, 25=Q, 26=O

## Ladder

1=C, 2=Y, 3=M, 4=J, 5=S, 6=F, 7=H, 8=U, 9=Y, 10=B, 11=A, 12=P, 13=A, 14=G, 15=R, 16=N, 17=X, 18=W, 19=L, 20=K, 21=L, 22=Z, 23=L, 24=E, 25=Q, 26=O

3	1	2	7	5	8	4	9	6
9	5	8	3	6	4	7	1	2
4	7	6	9	2	1	8	3	5
8	2	4	5	7	3	9	6	1
1	9	7	6	8	2	5	4	3
6	3	5	1	4	9	2	8	7
7	4	3	8	1	5	6	2	9
2	6	9	4	3	7	1	5	8
5	8	1	2	9	6	3	7	4

Hard

## Sudoku



It's time to Like, Follow & Subscribe

Don't be LEFT BEHIND.....

BREAKING NEWS  
WHAT'S ON  
SPORT  
INTERVIEWS

- CoventryObserver
- LeamingtonObserver
- RugbyObserver

- @CovObserverNews
- @LeamObs
- @RugbyObserver

- CovObserver
- Leamington.Observer
- Rugby.Observer

#ALSLetsMe

www.arnoldlodge.com



# ARNOLD LODGE

4-18 yrs Co-educational Independent Day School



# ALS Lets ME ACHIEVE

What will your child be?



## JOIN US AT OUR OPEN DAY

ON SATURDAY 9TH MAY 2026 10:00AM - 1:00PM



01926 778050      admissions@arnoldlodge.com  
 15-17 Kenilworth Rd, Leamington Spa, Warwickshire CV32 5TW

# Classified

TELEPHONE 01527 588688 FACSIMILE 01527 584371

### Warwickshire County Council

#### ROAD TRAFFIC REGULATION ACT 1984

Warwickshire County Council has made the following Temporary Traffic Orders:

##### WELLS STREET, RUGBY

**Order Effect:** Road closed to vehicular traffic.  
**Reason for Order:** Repair/replacement of defective manhole cover and frame.  
**Order Commences:** 20 April 2026 for up to 18 months.  
**Anticipated Completion:** 20 April 2026.  
**Access & Diversion:** Murray Road, Whitehall Road, Clifton Road, Grosvenor Road and vice versa.  
**Contractor:** CSP, Tel: 07918 298599.

##### WOOD STREET, RUGBY

**Order Effect:** Road closed to vehicular traffic.  
**Reason for Order:** Boundary box repair works.  
**Order Commences:** 20 April 2026 for up to 18 months.  
**Anticipated Completion:** 21 April 2026.  
**Access & Diversion:** Newbold Road, Evreux Way, Park Road and vice versa.  
**Contractor:** Chevron TM Ltd, Tel: 0330 008 0820.

##### LEICESTER ROAD & GIBBET HILL, CHURCHOVER

**Order Effect:** Road Closed to vehicular traffic from A5 to M6 west bound off slip including the east side of Rugby Interchange. In addition, all traffic will be prohibited from making a right turn from Lutterworth Road onto Leicester Road and from Coton Road onto Leicester Road.  
**Reason for Order:** To enable bridge joint repair works, weekends only.  
**Order Commences:** 17 April 2026 for up to 18 months.  
**Anticipated Completion:** 27 April 2026.  
**Access & Diversion:** Watling Street, A5, M1, M6 and vice versa.  
**Contractor:** Kier Transportation, Tel: 07751 733753.

##### COALPIT LANE, WOLVEY

**Order Effect:** Road closed to vehicular traffic.  
**Reason for Order:** Works to lay duct in verge and carriageway.  
**Order Commences:** 23 April 2026 for up to 18 months.  
**Anticipated Completion:** 27 April 2026.  
**Access & Diversion:** No diversion available.  
**Contractor:** Callan Connect, Tel: 0121 327 5167.

##### STAVELEY WAY, RUGBY

**Order Effect:** Road closed to vehicular traffic outside No. 31.  
**Reason for Order:** Repair/replacement of defective manhole frame & covers.  
**Order Commences:** 22 April 2026 for up to 18 months.  
**Anticipated Completion:** 22 April 2026.  
**Access & Diversion:** Crowthorns and vice versa.  
**Contractor:** Customer Solutions Plus, Tel: 07918 298599.

##### BOURTON ROAD, FRANKTON

**Order Effect:** Road closed to vehicular traffic.  
**Reason for Order:** Sewer lining works, closed 07.00hrs - 19.00 hrs.  
**Order Commences:** 20 April 2026 for up to 18 months.  
**Anticipated Completion:** 20 April 2026.  
**Access & Diversion:** Fair Close, Frankton Lane, Princethorpe Road, Main Street, Frankton Road and vice versa.  
**Contractor:** Sapphire Utility Solutions, Tel: 07775 714473.

Warwickshire County Council proposes to make the following Temporary Traffic Orders:

##### MAIN STREET, NEWBOLD AND HARBOROUGH ROAD, HARBOROUGH MAGNA & RUGBY

**Order Effect:** Roads closed to vehicular traffic.  
**Reason for Order:** To enable water network renewal works.  
**Order Commences:** 7 May 2026 for up to 18 months.  
**Anticipated Completion:** 4 June 2026.  
**Access & Diversion:** Main Street, Newbold Road, Leicester Road, Watling Street, A5, Lutterworth Road, Rugby Road, Pailton Road and vice versa.  
**Contractor:** Severn Trent Water, Tel: 0800 783 4444.

##### SHAKESPEARE GARDENS, RUGBY

**Order Effect:** Road closed to vehicular traffic.  
**Reason for Order:** To safely enable short comm pipe renewal.  
**Order Commences:** 6 May 2026 for up to 18 months.  
**Anticipated Completion:** 8 May 2026.  
**Access & Diversion:** Shakespeare Gardens and vice versa.  
**Contractor:** Chevron Traffic Management Ltd, Tel: 0330 008 0820.

##### CHURCH HILL AND FINEACRE LANE, STRETTON-ON-DUNSMORE

**Order Effect:** Road closed to vehicular traffic.  
**Reason for Order:** To safely enable boundary box repair.  
**Order Commences:** 4 May 2026 for up to 18 months.  
**Anticipated Completion:** 4 May 2026.  
**Access & Diversion:** Brookside, School Lane, Plott Lane, Freeboard Lane, Oxford Road, Fineacre Lane and vice versa.  
**Contractor:** Chevron Traffic Management Ltd, Tel: 0330 008 0820.

##### BECKFOOT CLOSE, RUGBY

**Order Effect:** Road closed to vehicular traffic.  
**Reason for Order:** Works to lay duct in carriageway and in footway.  
**Order Commences:** 4 May 2026 for up to 18 months.  
**Anticipated Completion:** 6 May 2026.  
**Access & Diversion:** No diversion available.  
**Contractor:** Core Highways, Tel: 0330 016 9688.

##### WOOD STREET, RUGBY

**Order Effect:** Road closed to vehicular traffic.  
**Reason for Order:** Works to install new service in footway and carriageway.  
**Order Commences:** 5 May 2026 for up to 18 months.  
**Anticipated Completion:** 8 May 2026.  
**Access & Diversion:** Wood Street, Railway Terrace, Manor Road, Park Road and vice versa.  
**Contractor:** Cadent Gas, Tel: 0800 111 999.

For all of the above temporary orders, pedestrian access to and egress from properties and land situated adjacent to the length of road to be closed will be maintained at all times. Vehicular access will be maintained where possible.

To report any problems with these works or for further details of our current & planned roadworks visit our website [warwickshire.gov.uk/roadworksmap](http://warwickshire.gov.uk/roadworksmap) or call us 01926 412515.

S Duxbury, Director of Strategy, Planning & Governance, Shire Hall, Warwick CV34 4RL Date 16 April 2026

### PUBLIC NOTICES

#### Warwickshire County Council

##### ROAD TRAFFIC REGULATION ACT 1984

Warwickshire County Council has made the following Temporary Traffic Orders:

##### B4113 STONELEIGH ROAD, STONELEIGH

**Order Effect:** A 30mph Speed Limit will be imposed between a pint 60metres north of the bridge over the River Avon and a point 15 metres north of the junction of Mary Lodge Drive.  
**Reason for Order:** For the safety of all road users and of contractors working on HS2 realignment along Stoneleigh Road.  
**Order Commences:** 19 April 2026 until such time as the Works have been completed and the Order has been revoked.  
**Contractor:** Balfour Beatty Vinci, Tel: 08081 434434.

##### A45 BIRMINGHAM ROAD, GREAT PACKINGTON

**Order Effect:** A45 Birmingham Road closed to northbound traffic from the Warwickshire/Solihull Boundary (Great Packington) to Warwickshire/Solihull Boundary at Stonebridge Island (both carriageways inc. slip roads on and off).  
**Reason for Order:** Carriageway patching and associated works to be carried out overnight in 2 phases as follows:  
**Northbound carriageway:** 17 April 2026 (20.00hrs) - 18 April 2026 (06.00hrs)  
**Southbound carriageway:** 18 April 2026 (20.00hrs) - 19 April 2026 (06.00hrs)  
**Order Commences:** 17 April 2026 for up to 18 months.  
**Anticipated Completion:** 19 April 2026.

##### Access & Diversion:

Northbound traffic diversion: Exit A45 at B4104 (Birmingham Road, Main Road), B4102 Hampton Lane, Molands Roundabout, A452 Kenilworth Road, Stonebridge Island.  
Southbound traffic diversion: Stonebridge Island, A452 Kenilworth Road, Molands Roundabout, B4102 Hampton Lane, B4104 (Main Road, Birmingham Road), Showell Lane, A45 on Slip.  
**Contractor:** Balfour Beatty, Tel: 0345 2415302.

Warwickshire County Council proposes to make the following Temporary Traffic Orders:

##### PINEWOOD AVENUE, WOOD END

**Order Effect:** Road closed to vehicular traffic.  
**Reason for Order:** Works to lay approximately 6m of duct.  
**Order Commences:** 4 May 2026 for up to 18 months.  
**Anticipated Completion:** 6 May 2026.  
**Access & Diversion:** No diversion available.  
**Contractor:** Quantum Traffic Management, Tel: 01724 786286.

For all of the above temporary orders, pedestrian access to and egress from properties and land situated adjacent to the length of road to be closed will be maintained at all times. Vehicular access will be maintained where possible.

To report any problems with these works or for further details of our current & planned roadworks visit our website [warwickshire.gov.uk/roadworksmap](http://warwickshire.gov.uk/roadworksmap) or call us 01926 412515.

S Duxbury, Director of Strategy, Planning & Governance, Shire Hall, Warwick CV34 4RL Date 16 April 2026

### PUBLIC NOTICES

#### Goods Vehicle Operator's Licence

Mr Iqbal Singh Sumner, Director of SGS Logistics Ltd of 55 Brettell Road, Leicester, LE2 9AB (corresponding address) is applying to make changes to the existing operator license to use at DEPOT (Secland Group), Oban Road, CV6 6HH as an operating centre for 4 trucks and 4 trailers.  
Owners or occupiers of land (including buildings) near the operating centre(s) who believe that their use or enjoyment of that land would be affected, should make written representations to the Traffic Commissioner at Quarry House, Quarry Hill, Leeds, LS2 7UE, stating their reasons, within 21 days of this notice. Representors must at the same time send a copy of their representations to the applicant at the address given at the top of this notice. A Guide to Making Representations is available at: [www.gov.uk/government/publications/a-guide-to-making-representations-objections-and-complaints-goods-vehicle-operator-licensing](http://www.gov.uk/government/publications/a-guide-to-making-representations-objections-and-complaints-goods-vehicle-operator-licensing)

### PUBLIC NOTICES

#### Rugby Borough Council Town and Country Planning Act 1990 (as amended)

**Application Number R26/0266**  
**CLIFTON C OF E PRIMARY SCHOOL, STATION ROAD, CLIFTON UPON DUNSMORE, RUGBY, CV23 0BT**  
Replacement of existing timber fence and gates with new 1.5m high bowtop metal fence.  
**This development may affect a Conservation Area**

Members of the public may inspect copies of the application, the plans and documents submitted with it online at:

[www.planningportal.rugby.gov.uk](http://www.planningportal.rugby.gov.uk) or in an electronic form at: Town Hall, Evreux Way, Rugby CV21 2RR between the hours of 9.00 am and 5.00 pm Monday to Friday until **01 May 2026**. Please note a planning officer would not be present.

If you wish to make an appointment to discuss the application, please contact the case officer.

Any person who wishes to make representation to the above mentioned Council about the applications should make them online - [www.planningportal.rugby.gov.uk](http://www.planningportal.rugby.gov.uk) (search for application number and select comment) - or in writing by that date to The Chief Officer Growth and Investment, Town Hall, Rugby, CV21 2RR.

If an application is determined by the Planning Committee, members of the public may have the opportunity to speak at the meeting. More details about public speaking are available from the Council or on-line at:

[www.rugby.gov.uk/speakingatplanning](http://www.rugby.gov.uk/speakingatplanning)  
For household or minor commercial applications, in the event of an appeal against a refusal of planning permission, dealt with on the basis of representations in writing, any representations made will be sent to the Secretary of State, and there will be no further opportunity to comment at the appeal stage.

Nicola Smith  
Strategic Director for Place

### PUBLIC NOTICES

#### Rugby Borough Council Town and Country Planning Act 1990 (as amended)

**Application Number R26/0186**  
**1, CASTLE MEWS, RUGBY, CV21 2XL**  
Change of use from offices E(g)(1) to class F(1) town workshop.  
**This development may affect a Conservation Area**

Members of the public may inspect copies of the application, the plans and documents submitted with it online at:

[www.planningportal.rugby.gov.uk](http://www.planningportal.rugby.gov.uk) or in an electronic form at: Town Hall, Evreux Way, Rugby CV21 2RR between the hours of 9.00 am and 5.00 pm Monday to Friday until **09 May 2026**. Please note a planning officer would not be present.

If you wish to make an appointment to discuss the application, please contact the case officer.  
Any person who wishes to make representation to the above mentioned Council about the applications should make them online - [www.planningportal.rugby.gov.uk](http://www.planningportal.rugby.gov.uk) (search for application number and select comment) - or in writing by that date to The Chief Officer Growth and Investment, Town Hall, Rugby, CV21 2RR.

If an application is determined by the Planning Committee, members of the public may have the opportunity to speak at the meeting. More details about public speaking are available from the Council or on-line at:

[www.rugby.gov.uk/speakingatplanning](http://www.rugby.gov.uk/speakingatplanning)  
For household or minor commercial applications, in the event of an appeal against a refusal of planning permission, dealt with on the basis of representations in writing, any representations made will be sent to the Secretary of State, and there will be no further opportunity to comment at the appeal stage.  
Nicola Smith - Strategic Director for Place

### PUBLIC NOTICES

#### WILLIAM IVOR GRAHAM ROBERTS (Deceased)

Pursuant to the Trustee Act 1925 any persons having a claim against or an interest in the Estate of the above named, late of 2 Buccleuch Close, Dunchurch, Rugby, CV22 6DB, who died on 02/10/2025, are required to send written particulars thereof to the undersigned on or before 18/09/2026, after which date the Estate will be distributed having regard only to the claims and interests of which they have had notice.  
Kumford Solicitors LLP  
26 Regent Street, Rugby CV21 2PS

### PUBLIC NOTICES

Keeping you up to date with the latest information on Planning Proposals, Traffic Notices, Goods Vehicle Operator Licences, Licences To Sell Alcohol, Probate Notices.....

## Check out our E-Editions!

[www.coventryobserver.co.uk/editions](http://www.coventryobserver.co.uk/editions)  
[www.rugbyobserver.co.uk/editions](http://www.rugbyobserver.co.uk/editions)  
[www.leamingtonobserver.co.uk/editions](http://www.leamingtonobserver.co.uk/editions)

The same paper you love on your mobile, tablet and computer

# Classified

TELEPHONE 01527 588688 FACSIMILE 01527 584371

## SALES & WANTS

### MISCELLANEOUS

**BEDS NEW** Doubles £95 Singles £59 King size £159. Second hand doubles £49 Singles £29 Fridges £49 Freezers £59 Can deliver 07703 925662

**RECLINER CHAIR** electric rise & recline £169 Manual recline chair £60 High seated chair £40 Can deliver 07703 925662

**ELECTRIC** Titan Hedge Trimmer £35 07821939021

**TRAVEL** cot for sale Cugli with mattress if required grey. G / c. 100x74x74. £20 01788840581

**PAIR** Zenith 10 x 15 binoculars in leather case £30 all offers considered 0121 744 7579

**ILFORD** Sporti 4 camera excellent condition in leather case £10 0121 744 7579

### MISCELLANEOUS

**AS** new spray on pressure sprayer for fence painting etc 320 0121 744 7579

**OVER 20** Hornby train / accessories which need renovating back to life hence price £20 lot 0121 744 7579

**TRAVEL** Cot £10 07902292926

**FREE** freezer ideal as secondary freezer for garage etc, size 23.5 in wide x 22 in deep x 33.5 in high. Tel 0121 704 9252

**16"** wheels, in immaculate condition no marks only used twice £150 tel 01527 872540

### WANTED

**\*\*WANTED: Vinyl Records CDs Cassettes Vintage or New\*\***  
Seeking classic rock, jazz, indie and rare finds. Cash paid  
Call or text: 07765 142354 Or 01527 893992  
Or email: welston@live.com  
Paul (Albatross & Doomed Records)

### MISCELLANEOUS

**JOULES** ladies wellies, Navy with cerise flowers. £10. ZARA black wellies with silver / black check top. £15. Both new / Size 8 07840800965

**GOLF** Balls 100 balls for £22 VGC & clean 01564 784171

**SUFFOLK** colt 12inch lawnmower 4stroke working order £20 01527 876942

**JUWEL** Rio aquarium 125 litre with cabinet, lighting, heater and extras excellent condition £150 01527 528646

## SERVICES

### CONSERVATORIES & GLAZING

## DOUBLE GLAZING REPAIRS

Locks, Hinges, Handles, Glass, Windows or Doors  
New Doors/Windows  
Also Supplied/Fitted  
**07973 200 623**

### DRIVEWAYS

## COVENTRY DRIVEWAYS

- Block paving • Slabs • Porcelain Tiles & Sandstone Kits
- Fencing • Gravel • Turf & Artificial Grass
- Decking, Steps and more

7 Years Warranty on all projects  
Payment only after completion  
**02476 274439 07740 101227**  
[www.spanglefish.com/coventrydriveways](http://www.spanglefish.com/coventrydriveways)

## HOME IMPROVEMENTS

### HANDY MAN

If you're looking for a fast and reliable service

- Then call Lenny
- Plastering • Plumbing • Fencing
  - Gardening • Flooring • Kitchens
  - Bathrooms • Carpentry • Flat pack furniture
  - Tiling • Painting

**02476 443 996**  
**07794 784 266**

NO VAT CHARGE

## KITCHENS

### S.W INSTALLATIONS

### Kitchens & Bathrooms

FREE DESIGN & QUOTATION

QUALITY KITCHENS & BATHROOMS SUPPLIED & FITTED

PLUMBING, CARPENTRY, TILING, WORKTOP & DOOR REPLACEMENT

(Supply & fit, supply only or fit only)  
LOCAL TRADESMAN  
20YRS EXPERIENCE  
NO JOB TOO SMALL  
**07971 684 353**

## LOGS

### LOGS FOR SALE

Mainly Ash

£120, £220, £390 loads delivered

Builders bag of logs £120 delivered

Card, cash or cheque payments taken

Tel **07477 778536** or **07983 441818**

See load sizes at our website  
[www.rbtimber.uk](http://www.rbtimber.uk)

**PROBLEM? LOOK NO FURTHER!**  
Our Classified pages are full of Experts waiting to help!  
Give them a call!

## SOMETHING to sell?

You Can Raise Some Extra Cash and make someone else's Day  
By SELLING Your Wonderful but Unwanted Gifts or Private Items  
Simply by advertising them in The **Observer** or **The Standard**  
And...If your item is valued at £500 or less – its FREE of charge in lineage (max 15 words)  
But if you want your advertisement to really stand out or if your item is valued at over £500, you can place details in a boxed advertisement for just £5.75 (inc Vat)  
Simply fill in the coupon below, tick the appropriate box, enclose your cheque or credit card details if required, and we'll do the rest - **Or alternatively email your free ad to: [freeads@bullivantmedia.com](mailto:freeads@bullivantmedia.com)**

Free Lineage (Items upto value £500)       Paid for Boxed Ad (Items of any value)

Details of Item For Sale for Publication (No Pets or Livestock or Firearms please): (MAX 15 WORDS)

..... Telephone Number.....

Details (Not for Publication):

Mr/Mrs/Ms..... Initials..... Surname.....

Address.....

Postcode..... Telephone:..... Mobile.....

Email address.....

I enclose cheque, payable to Bullivant Media Ltd, value £.....

or alternatively

Please debit my card for £..... Visa/Mastercard/Maestro/Delta

Credit Card Number.....

Exp Date..... Start Date..... Security Number..... (Last 3 digits) Issue Number..... (if applicable)

Send to **Bullivant Media, Webb House, Church Green East, Redditch, Worcestershire. B98 8BP**  
or email your advertisement to [freeads@bullivantmedia.com](mailto:freeads@bullivantmedia.com)

**3 PIECE SUITE**  
brown leather,  
perfect  
condition  
as new  
**£550**  
can deliver  
Telephone  
**10234 567890**

(£5.75 incVAT example boxed advertisement)

## Grimes rues 'missed chance' for Sky Blues

**FOOTBALL:** MATT Grimes admits Coventry City's draw against Sheffield Wednesday felt like a 'missed opportunity' for the Sky Blues with promotion on the line.

A goalless draw at the Coventry Building Society Arena means Coventry need just one point from their remaining four matches to seal a return to the Premier League.

Frank Lampard's side would have clinched promotion with a victory against the Owls owing to results elsewhere.

And while Grimes admits the Sky Blues missed an opportunity against Wednesday, the Coventry skipper is enjoying the pressure that comes with a promotion race. "It

was frustrating. We weren't quite at our best, especially in the final third.

"It feels like an opportunity missed but it's another point on the board and another point towards where we want to get to.

"It's high pressure but it's a good pressure. It's the end of the table you want to be at - fighting for points to try and win the league.

"We're frustrated with the result but it's a point in the right direction and we're maintaining two points a game.

"We've just got to keep up with that."

Coventry can clinch promotion at Blackburn Rovers on Friday, April 17 with kick-off at 8pm at Ewood Park.

## Sphinx relegated with two games left to play

### NPL Midlands table

	P	W	D	L	PTS
16 Loughborough Students	40	12	13	15	49
17 Rugby Borough	40	12	13	15	49
18 Bedworth United	40	13	9	18	48
19 St Neots Town	40	11	10	19	43
20 Bourne Town	40	12	7	21	43
<b>R Coventry Sphinx</b>	<b>40</b>	<b>11</b>	<b>8</b>	<b>21</b>	<b>41</b>
R Rugby Town	40	9	7	24	34

COVENTRY Sphinx suffered relegation from the Northern Premier League Midlands following defeat against Sutton Coldfield Town. Sphinx saw their three-year stay in the division come to an end following a 3-1 defeat against Sutton at the Cameron Slater Arena.

A stunning goal from Ayo Lekuti put the visitors ahead at the break before Reece Gibson doubled Sutton's lead just past the hour mark.

Sphinx halved the deficit seven minutes from time only for Ryan Shaw to seal the points for Sutton at the death before the same player saw red minutes later.

Results elsewhere meant Coventry needed at least a draw to keep their survival hopes alive with Sphinx unable to secure the necessary result.

A run of 10 games without a win ultimately led to Coventry's relegation despite a change of manager.

Sphinx sacked long-serving boss John Woodward in January with the club one point clear of the relegation zone at the time.

A number of staff

members and players departed Sphinx following the news of Woodward's sacking.

Brothers Ryan and Joe Conneely replaced Woodward in the Cameron Slater Arena dugout.

However, the pair have managed just four wins in 17 matches since taking charge.

A Sphinx club statement read: "This result confirms our relegation from the Northern Premier League Midlands.

"It's a tough moment, but we want to thank everyone for their incredible support over the past three seasons and for sharing every achievement along the way.

"Our players have given their heart and soul in every single game, fighting for the badge with everything they have.

"This setback won't define us. We regroup, we rebuild and we rise again.

"Coventry Sphinx will be back stronger, hungrier and ready for the next chapter."

Sphinx are next in action against Long Eaton United on Saturday, April 18 with kick-off at 3pm at the Cameron Slater Arena.

# Blaze season ends in play-off defeat as Devils advance to finals over two legs

by Aaron Sutcliffe  
aaron.sutcliffe@bullivantmedia.com

**ICE HOCKEY:** COVENTRY Blaze saw their season come to an end following a 6-2 play-off quarter-final aggregate defeat against Cardiff Devils in the Elite League.

Blaze suffered a 2-1 home defeat against Cardiff at the Skydome Arena in the first leg of their play-off quarter-final clash.

And Coventry then lost 4-1 at the Vindico Arena in the second leg to suffer a 6-2 aggregate defeat as the club's season came to an end.

Blaze finished five places below the Devils in the Elite League standings with the latter side runners-up to champions Belfast Giants.

Coventry remained in the play-off clash following a narrow first leg defeat as defenceman Colton Saucerman returned to the side.

And Blaze broke the deadlock at 14.40 when Jere Vertanen kept the puck alive in the offensive zone and Grayson Constable produced a clinical finish to put the home side ahead.

The Devils protested against the goal for offside only for the officials to wave away Cardiff's appeals.

Blaze netminder Mat Robson made a couple of crucial saves from Riley Brandt towards the end of the first period before Coventry killed a penalty to take a narrow lead into the first intermission.

The home side spurned a glorious chance to double their lead early in the second period as Blaze failed to capitalise on a powerplay chance.

And Cardiff equalised at 24.45 when Evan Mosey joined the rush and found space to beat Robson to level the game.

The Devils completed the turnaround at 31.51 as Kristoff Kontos found the net after the visitors kept



the puck alive behind the Coventry net.

Blaze killed a penalty late in the second period and kept the deficit at a single goal heading into the final frame.

Cardiff killed a Blaze penalty early in the third period and failed to make the most of a powerplay of their own at the death in a closely-contested affair.

However, Coventry could not overturn the deficit in the second leg as the Devils raced into a four-goal lead inside the first half-hour in Wales.

Blaze made a disastrous start as Kohen Olishefski put Cardiff ahead after just 39 seconds from Josh MacDonald's precise pass.

The visitors looked to respond to the setback when Jordan Power went close while Robson made a stretch save at the other end to deny Brandt once again.

Cardiff carried a one-goal lead into the second period after Tyson Helgesen hit the bar for the home side.

However, the Devils took control of the quarter-final tie when MacDonald forced home a loose puck at 25.23 on the powerplay.

Cardiff struck again on the powerplay at 29.18 as Joey Martin put the Devils into a three-goal cushion.

And Brandt scored a fourth goal for the Devils just 21 seconds later to all but end the game as a contest.

Coventry scored a consolation goal in the third period at 50.25 through William Boysen as Constable and Elijah Barriga saw late chances go begging.

**Coventry suffered a play-off quarter-final defeat against finals-bound Cardiff over two legs. Picture by Scott Wiggins.**

## Cov see winning run halted by Nottingham in second Matt Gallagher Cup clash at Lady Bay

**RUGBY UNION:** COVENTRY Rugby saw their six-game winning run come to an end following a 33-26 defeat at Nottingham in the second edition of the Matt Gallagher Cup.

Alex Rae's side raced into an early lead as Allan Ferrie and Aristot Benz-Salomon crossed inside the first 10 minutes for the visitors at Lady Bay.

However, Nottingham responded with three unanswered tries as Kegan Christian-Goss crossed twice while James Cherry also touched down.

Coventry secured two bonus points from the fixture as Tom Bacon and Murray Davidson both dotted down for the visitors.

But tries from Will Yarnell and Gwyn Parks, either side of Davidson's try, brought an end to the away side's winning run.

The result means Coventry sit fourth in the Champ Rugby table, five points behind Bedford Blues in second.

Coventry scored the game's first try after just seven minutes as Ferrie dove on the loose ball from Jack Reeves' grubber kick.

And Rae's side crossed again three minutes later when Benz-Salomon crashed over from close range following a 40-metre break from Jordon Poole.

Nottingham responded on 20 minutes as Christian-Goss powered over from close to the line to keep the home side in the contest.

The hosts struck again on 34 minutes when Cherry forced his way over the line following several phases.

And Christian-Goss scored his second try of the game on the stroke of

half time to send Nottingham into the break with a nine-point lead.

Coventry responded after the break on 52 minutes when Bacon stepped his way past two defenders to dot down.

Nottingham restored the gap between the two teams on 66 minutes as Yarnell finished off a flowing move under the posts.

However, Coventry scored a bonus point try four minutes later when Davidson powered over from a lineup maul to close the gap to two points.

But the home side all but sealed the points two minutes from time as Parks finished out wide to stretch Nottingham's lead.

Coventry are next in action against Cambridge on Friday, April 17 with kick-off at 8pm at the Nick Newbold Stadium.

**CRS LTD**  
 Spring Lane South, Malvern WR14 1AT  
 ATF's are the **ONLY** legal way to scrap your vehicles  
**BUYERS**  
 of all SCRAP Metals and SCRAP Vehicles  
 The **ONLY** authorised treatment facility in Malvern!  
 Best Prices Paid • Collection & Skip Drops Farm  
 Equipment, Copper, Brass etc. • 50 Ton Weigh Bridge  
**ID REQUIRED - 01684 578081**  
 www.crs-malvern.co.uk

# Observer SPORT



9 772040 128006  
 Published by Bullivant Media Group Ltd, Webb House,  
 Church Green East, Redditch, Worcestershire, B96 8BP  
 Printed by Newsquest, Newspaper House, Osney  
 Mead, Oxford, Oxfordshire, OX2 0EJ

**VINYL RECORDS WANTED**  
 Buying since 1978  
 Get your cash TODAY!  
 I will come to you  
**Phone PAUL**  
**01527 893992 | 07765 142354**

www.rugbyobserver.co.uk BRINGING YOU ALL THE LATEST SPORTS NEWS AND VIEWS FROM THE AREA

# Borough almost safe while Valley finally halt losing run

**FOOTBALL:** RIVEL Mardenborough scored a brace as Rugby Town ended their six-game losing run in the league with a 2-2 draw against Wellingborough Town.

Mardenborough opened the scoring inside 60 seconds and later levelled the game to earn Valley a point at Butlin Road.

The draw means Valley will finish bottom of the Northern Premier League Midlands with the club's relegation already confirmed.

Rugby made a blistering start and took the lead after just 19 seconds when he ran onto Harrison Nee's long ball and produced a low finish past Dean Snedker.

However, Wellingborough equalised on 10 minutes Valley goalkeeper Charlie Woods punched

Sam Warburton's swirling corner into his own net.

The visitors twice went close through Connor Tomlinson and Lloyd Buckby while Woods clawed away another wind-assisted effort from Tomlinson.

Valley spurned a golden chance to take the lead moments before the break as Snedker rushed off his line to deny Jack Concannon with the midfielder through on goal.

Wellingborough turned the game on its head on 54 minutes when James Clifton finished Joe Pursey's cross.

However, Rugby equalised on 73 minutes as Mardenborough rounded Snedker to score his second of the game from Concannon's through ball.

Valley almost snatched the points



Borough need just one more point to clinch safety. Picture by Brian Dainty.

when Nee saw his shot deflect narrowly wide while Woods denied Joseph Evans and Clifton late on.

Valley are next in action against Bedworth United on Saturday, April 18 with kick-off at 3pm at

Butlin Road.

Elsewhere, Rugby Borough need just one more point to guarantee safety following a 1-1 draw against AFC Rushden and Diamonds.

The two teams traded early goals

as Joziah Barnett put the Diamonds ahead at Hayden Road only for Tyrell Waite to quickly restore parity for the visitors.

And the result means Borough sit six points clear of the Northern Premier League Midlands relegation zone with two matches left to play.

Rushden took the lead after just 10 minutes as Barnett powered a header into the bottom corner from Freddie Finlay's delicate cross into the box.

However, Rugby drew level just three minutes later when Waite scored from the penalty spot despite Rushden stopper Ben Heath guessing the right way.

Borough travel to Basford United on Saturday, April 18 with kick-off at 3pm at Greenwich Avenue.

**CASHBROKERS**  
LEAMINGTON SPA

PAWNBROKING LOANS  
 SCRAP GOLD & SILVER  
 BUY BACK  
 JEWELLERY & WATCHES  
 COINS & BULLION

01926 258252

144 Parade, Leamington Spa, CV32 4AG  
 www.cashbrokersleamingtonspa.co.uk

CASH PAID

FOR GOLD, SILVER,  
COINS & BULLION



Switzerland