



Observer

Rugby & Lutterworth 

Friday, May 1st 2026 Week 18

 facebook.com/rugby.observer

rugbyobserver.co.uk

 @rugbyobserver t: 01926 451900

Your **FREE** edition - just pick one up and keep up with the news



Sky Blue heaven: Coventry are finally back where they belong

by **Aaron Sutcliffe**
aaron.sutcliffe@bullivantmedia.com

COVENTRY City will play in the Premier League next season after winning the Championship title, some 25 years since the club last featured in the top-flight of English football.

The club's supporters have endured unimaginable hardships since Coventry's relegation from the promised land, in the 2000/01 campaign.

Ownership struggles, ground-shares and fan protests dominated the headlines in the years following the club's Premier League relegation, with Coventry dropping to the fourth tier of English football

for the first time in the club's history.

Mark Robins spearheaded the club's revival with two promotions and took the club to within a penalty shootout of a Premier League return only for Coventry to suffer a cruel defeat to Luton Town at Wembley in the Championship play-off final three seasons ago.

Robins' successor, former

Chelsea legend Frank Lampard, has defied the doubters to secure promotion in his first full season in charge, as Coventry swept all before them en route to promotion and the title.

Coventry City are back and the fans will be out in force to celebrate their return to the big time. An open-top bus parade will leave the CBS Arena at 1pm on the May Day bank holi-

day Monday. The public section of the parade will conclude with the squad reaching Hearsall Common.

At around 4pm, players and staff will head to War Memorial Park for another celebration – a ticketed event. That takes place in the park from 1pm to 7pm (with last admission at 3pm).

Turn to page 29 for more on Monday's events.

Big League Dreams Royal Court Comfort

'Explore, Unwind, Escape'

#PUSB

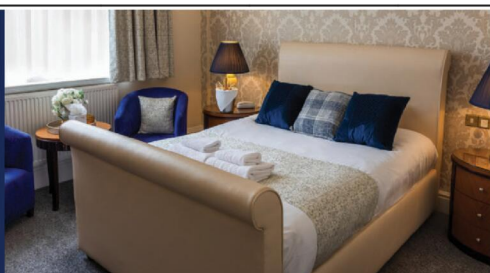


Royal Court Hotel
COVENTRY

ELITE VENUE SELECTION

IN SUPPORT OF
COVENTRY CITY FOOTBALL CLUB

theelitevenueselection.co.uk



Scan this QR code with your phone or tablet to book

Dec 2007
SISU take control and prevent administration

Sep 2014
Club returns to the Ricoh Arena

May 2018
League Two play-off final win at Wembley

May 2001
Coventry relegated from Premier League after 34 years in the top flight

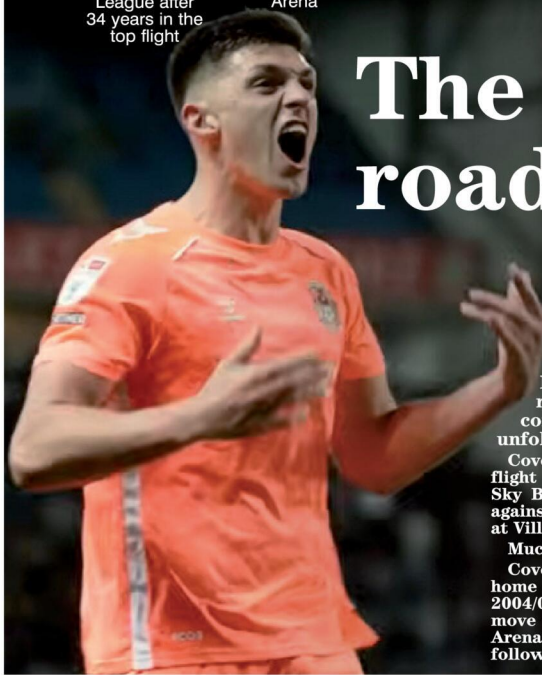
May 2005
Club leave Highfield Road for the Ricoh Arena

May 2012
Relegation to League One

Mar 2013
Club enters administration

Aug 2013
Season kicks off at Sixfields Stadium, Northampton

Apr 2017
Relegation to League Two



The long and winding road... back to the top

by Aaron Sutcliffe
aaron.sutcliffe@bullivantmedia.com

IF YOU could map out a club's route back to the Premier League following relegation, no one would come up with the events that unfolded at Coventry City.

Coventry's 34-year stay in the top-flight ended on May 5, 2001, as the Sky Blues let a two-goal lead slip against Midlands rivals Aston Villa at Villa Park.

Much worse was to follow.

Coventry left their Highfield Road home of 106 years at the end of the 2004/05 season, with the club to move to the then newly-built Ricoh Arena in time for the start of the following campaign.

However Coventry were almost wound up in 2007, owing to mounting debts, only for SISU to complete a takeover of the club with less than an hour to spare.

Any renewed hope following the takeover quickly diminished as the club suffered relegation to League One at the end of the 2011/12 season.

More bad news was to come as the club entered administration on March 21, 2013.

A long-running rent dispute forced the club to leave their home city in 2013/14 with Coventry playing their home games at Northampton Town's Sixfields Stadium for more than a season amid growing fan protests.

Coventry eventually returned to the then-named Ricoh Arena in September 2014 with rugby

union side Wasps relocating from Wycombe to play their home games at the ground from December that same year.

However, despite returning to their home stadium, Coventry suffered relegation to the bottom tier of English football on April 10, 2017.

The club secured promotion back to League One via the play-offs at the first attempt only for another rent dispute, with landlords Wasps before the start of the 2019/20 season, to force the Sky Blues out of their home city once again.

The club ground-shared with Birmingham City at St Andrew's for two seasons, during which time Mark Robins guided City to the League One title in the Covid affected 2019/20 campaign.

Coventry once again returned to



ASPECTS TOTAL TRAINING LTD

Coventry Scaffolding Training Centre

Get qualified and advance your career

Courses:

- COTS, Part 1, Part 2 and Advanced training
- CPD Scaffold Refresher Training
- SSPTS – Plettac Metrix and Cuplok
- Basic Inspection, Advanced inspection courses
- Health & Safety Training

*Funding available for select courses**

Call now on 02476 880931

Or visit our website www.aspectstraining.co.uk



WANTED
Motorcycles and
Scooters

Any cc, condition or age,
good prices paid

07944 781 933 | 01926 257 643

Friday, May 1st 2026 Week 18

 facebook.com/rugbyobserver

rugbyobserver.co.uk

 @rugbyobserver t: 01926 451900

Your **FREE** edition - just pick one up and keep up with the news

Victim praised as Rugby rapist gets seven years

by **Andy Morris**
andy.morris@bullivantmedia.com

A 'PREDATORY' rapist from Rugby has been jailed after he admitted drugging and sexually assaulting a woman in a Warwick car park.

At Coventry Crown Court, Connor Ratcliffe, 30, of Yates Avenue in Rugby, was sentenced to seven and a half years in prison for the rape, and six months for the drug offence, to run concurrently.

Ratcliffe was also ordered to sign the Sex Offenders' Register for life.

Connor Ratcliffe, 30, pled his victim with drugs and alcohol before carrying out 'a sequence of predatory acts'.



A woman in her 20s was out in Warwick in July 2023 when she was approached by an unknown man - Ratcliffe.

He pled her with drugs and alcohol over the course of the evening before carrying out what the judge described as 'a sequence of predatory acts' which culminated in him raping her in a secluded car park.

Officers soon arrested 30-year-old Ratcliffe, who was later charged with two counts of rape and supplying cocaine.

Despite initially denying the offences, he eventually changed his plea to a hearing in March.

Det Cons Sacha Bury of Warwickshire Police said: "This has been very traumatic for the victim who has shown immense bravery since the outset.

"Her life has been hugely impacted by what happened, but I hope knowing Ratcliffe is now behind bars will provide some comfort as she tries to come to terms with it all.

"I hope his conviction also reassures other victims of sexual offences and gives them the confidence to report their ordeal knowing they will be listened to and supported. We will always investigate and do everything we can to bring offenders to justice."

A Warwickshire Police spokesperson added: "Anyone who has been the victim of a rape or a sexual offence is encouraged to report the incident to police, where specially trained officers will help victims with care and sensitivity, and will work to get the right result for them with their wishes in mind.

"Alternatively, there are many agencies you can approach - including Safeline - who offer information, guidance and other support.

Visit <https://tinyurl.com/4d26tc5p> for more information on support available to survivors of rape and sexual assault.

Cheers! Picture by Marcus Mingins
1826002MMR



LARGE HELPING OF FUN: HUNDREDS of hungry Rugbeians marked the unofficial start of this year's outdoor revelries at the town's Spring Food and Drink Festival.

The sun got his hat on for the ever-popular free event, which showcased the culinary expertise of over 50 local businesses, farms and pro-

ducers.

Other attractions included traditional wood-working sessions, face painting, food art, a food and drink quiz and live music performed by talented local acts.

As usual, The Observer popped along to take some photos. See pages 12-13 for more.

DRIVES4U

Tel: 0800 3032559
Mob: 07773 911552
www.drives4u.co.uk

Are you looking to improve or enlarge your driveway or patio?

We can provide you with a beautiful new patio or driveway in Coventry, Bromsgrove, Redditch, Solihull, Leamington, Kidderminster and Birmingham

5 Year guarantee

- We've designed and built just about every shape and size of driveway and patio you can imagine, so we will not be phased by your project.
- We strive to achieve 100% satisfaction and unlike other driveway companies, with us you pay absolutely nothing upfront.
- Give us a call and you could save upto £1000



Tel: 0800 3032559 | Mob: 07773 911552 | www.drives4u.co.uk

Championing the needs of Rugby residents since 1991 and delivering the news to you every week

Lib Dem leader steps down from county role

by **Andy Morris**
andy.morris@bullivantmedia.com

A RESPECTED, long-serving party group leader at Warwickshire County Council (WCC) is stepping down from the role.

Councillor Jerry Roodhouse has announced that he is standing down as leader of the Liberal Democrat group at the council, with Coun Sarah Boad elected to succeed him.

Coun Roodhouse, WCC's longest standing member, led the Liberal Democrats into opposition at the May 2025 elections.

He will continue to serve on the group's leadership team as chair and as the county councillor for Eastlands, in Rugby.

Coun George Cowcher has been elected deputy leader of the group.

Coun Roodhouse said: "I have decided that this is the right time for me to stand down from this role. It has been a privilege to lead the group and represent our communities and I am proud of what we have achieved together."

"I am delighted that Coun Sarah Boad will now be taking over as group leader. She brings energy, commitment and a clear vision for the future and I know the group will be in very capable hands. With Coun George Cowcher as deputy leader, together they are a pair of experienced hands who can challenge the administration."

"With significant changes to local government on the horizon, I believe it is important for the next generation of leadership to take the Liberal Democrats forward and shape our response to these reforms."

"I will now be focusing my efforts on key local priorities. In particular, I will be campaigning for meaningful local government reform, including the establishment of a Rugby Town Council, to strengthen local representation and accountability and for improving access to health services."

"I will also continue to advocate strongly for improved cancer services across Warwickshire and for improved health provision for Rugby residents."

"While I am stepping down from leadership, I remain fully committed to supporting the Liberal Democrats and will continue campaigning actively on behalf of our communities."

Coun Boad said it was an honour to be elected to lead the group.

She added: "I want to thank Jerry for his leadership and for the dedication he has shown to our communities. He leaves the group in strong shape and I know he will continue to be a powerful voice for Rugby and for Warwickshire."

"Warwickshire faces real decisions in the months ahead; on local government reorganisation, on adult social care, on SEND [special educational needs and disability provision], on the future of our schools and our high streets. Where the administration gets things right, we will say so. Where they get things wrong, we will hold them to account."

Coun Cowcher said he was proud to become deputy leader.

He added: "Our job, as the opposition, is to keep pressing the administration to deliver on the basics and to be ready with serious answers as the county moves through reorganisation and into a new era of local government."

I look forward to supporting Sarah and the whole group in that work."

Last year, Coun Roodhouse was given the title of honorary freeman of the county of Warwickshire – the first time it had been awarded to an individual this millennium. County councillors from all parties unanimously endorsed the honorary award, recognising his significant and valuable services.

The award recognised 35 years of service Coun Roodhouse has given to Warwickshire – first as a member of Rugby Borough Council, from 1990, and as a member of the county council from 1993.

He has earned the respect of peers across the political spectrum for his campaigning on health and social care, local policing and protecting green areas, as well as for his work in supporting community groups and children.



Coun Jerry Roodhouse is standing down as leader of the Liberal Democrat group at Warwickshire County Council. s

OFTEN IMITATED BUT NEVER EQUALLED

While all costs are going up - OURS ARE STAYING DOWN

Due to our customer friendly services of No Door Salesmen, No Showroom and little overheads



NEW FLUSH WINDOWS

BEAUTIFUL COMPOSITE DOORS
Fully fitted
Competitive Prices



UPTO 30% OFF ALL WINDOWS



ALL PRODUCTS HAVE A 10 YEAR INSURANCE BACKED WARRANTY

BILL MOORE'S WINDOWS AND DOORS

A NAME YOU CAN TRUST

1 Brookside Close, Stratford-upon-Avon, Warwickshire CV37 9PL

01789 415171 • 07729 689239 • www.billmooreswindowsanddoors.co.uk

PUBLIC NOTICES



For all your latest information on Planning Proposals, Traffic Notices, Goods Vehicle Operator Licences, Licences To Sell Alcohol and Probate Notices...

See page **27**





From left: Dipak Ram, Manjinder Pama, Rachel Byrne and Kamlesh Kaur. s

Cocaine gang handed down their sentences

by Andy Morris
andy.morris@bullivantmedia.com

A CRIMINAL gang which supplied cocaine across Warwickshire has been jailed and tens of thousands of pounds worth of assets have been seized following a lengthy police investigation.

The operation began in June 2023, when Manjinder Pama, 45, who was living in Nuneaton, was caught with £11,000 in cash and almost £13,000 worth of cocaine.

He was convicted and handed a six-year prison sentence.

Detectives uncovered a wider supply network, including Pama's supplier and the people beneath him.

Officers discovered Pama had continued to run the supply line from prison, using coded phrases such as 'building materials'.

Police identified Rachel Byrne, 34, of Worcestershire; and Shaun Neal, 39, of Nuneaton, as being part of the group - catching them with a further £13,000 worth of cocaine when they stopped Neal's car, in 2023.

Detectives found Kamlesh Kaur, 40, of Wolverhampton, was also involved and she was arrested. Lisa Banks, 39, of Nuneaton, was also identified, and arrested in October 2023.

All the suspects were re-arrested in November 2024 and the group's upward supplier, Dipak Ram, 41, of Birmingham, was arrested, with detectives finding a further £13,000 worth of cocaine and £10,000 in cash.

At Warwick Crown Court, Pama had a further 33 months and a serious crime prevention order added to his prison sentence.

Ram was sentenced to 11 years in prison and a serious crime prevention order.

Byrne was sentenced to four years and nine months in prison. Kaur was sentenced to four years in prison.

Banks was sentenced to a two-year suspended sentence, rehab activity and electronic curfew.

Neal was given an 18-month suspended sentence and ordered to undertake unpaid work and rehab activity.

Det Sgt Daniel Lydster, who led the investigation, said: "Each one of these individuals was willing to spread misery, poverty and crime across Warwickshire to try to make some cash."

"This was a long, complex investigation and we couldn't be more pleased that we have broken up this group and presented them to the courts to be held accountable."

"Cocaine fuels a chain of suffering that starts halfway across the world and ends in damaging our communities here in Warwickshire - and anyone involved in its supply can expect to face justice."

Motorcyclist killed in road crash

A MOTORCYCLIST has died in a crash near Wolston.

A Yamaha motorbike and a VW Tiguan collided close to Dyer's Lane on the Posse Way on Thursday, April 16.

The biker - a man in his 60s - died at the scene. His next of kin has been informed.

Police officers are asking anyone with dashcam

footage of the collision, or who saw anything, to get in touch via www.warwickshire.police.uk/ro/report quoting incident number 159 of April 16.

Reward offered to track down Brady

TWO men have been arrested as police continue to search for a wanted man with connections to Rugby and Coventry.

Officers want to speak with Brady Winterburn about an aggravated burglary at a flat in Rugby this year.

Independent charity Crimestoppers is offering a £1,000 reward for information that leads police to find the 22-year-old.

On Monday, as part of ongoing enquiries, officers arrested a 44-year-old man and a 25-year-old man on suspicion of assisting an offender.

A Warwickshire Police



Brady Winterburn has connections to Rugby and Coventry. s

spokesperson said: "We are continuing our search for Winterburn and would like to remind people that assisting or attempting to conceal someone wanted by officers is a criminal offence and anyone found to be doing so will be dealt with accordingly."

Anyone who has seen Winterburn, or who has information which could help officers, is asked to report information via www.warwickshire.police.uk/ro/report or to contact Crimestoppers on 0800 555111, quoting incident number 349 of January 19.

Bank Holiday Gardening at the garden lover's garden centre



A traditional garden centre that focuses on providing quality plants, garden products, homeware and gifts

national
Garden Gift
voucher

AQUATIC
PLANTS

TUB & BASKET
PLANTS

VEGETABLE
PLANTS

SUMMER
BEDDING

Treasured
Teddies

AT
FARNBOROUGH GARDEN CENTRE

Come & visit our Treasured Teddies shop & see our massive selection of cuddly collectables & furry friends including especially loveable limited editions and everyday huggables

A world of Choice

**NORMALLY OPEN
6 DAYS A WEEK**
Tues-Sat 9-5.30pm
Sun 10.30-4.30pm
**Open Bank
Holiday Monday**
On A423 Southam Road,
Nr Farnborough, Banbury, OX17 1EL
Tel 01295 690479

customersales@farnboroughgardencentre.co.uk

WHERE THINGS FOR YOUR GARDEN
WON'T COST YOU THE EARTH



CLOCKWISE from Top Left: KES Pupils are always central to the parade. 1826001 MMR.

It was the perfect opportunity for dressing up.

Pupils from Thomas Jollyffe Primary School help represent the younger contingent. 1826001 MMR.

Families flocked to watch the spectacle. 1826001 MMR.

Stratford mayor Coun Dani Hunter waves to the crowd. 1826001 MMR

All pictures by Marcus Mings





KINGHAM'S
AUCTIONEERS • VALUERS

Antiques Valuation Event in Dorridge

Thursday 7 May 11 am to 2 pm

Free Valuations of Paintings, Antiques, Watches & Silver

at
The Meeting Room, Dorridge Village Hall
Grange Road, Dorridge, Solihull, B93 8QA



*A Moorcroft Vase
SOLD FOR A WORLD RECORD £41,984*

Home Visits. Estate Clearance. Downsizing Advice. Probate & Insurance Valuations.
Contact: **Adrian Rathbone 01608 695695**
adrian@kinghamsauctioneers.com

Head Office: 10-12 Cotswold Business Village, Moreton-in-Marsh, GL56 0JQ
www.kinghamsauctioneers.com



PHOENIX COACHES

	Adult	Child
May		
16th Black Country Museum.....	£37.00	£24.00
26th Lunch & Entertainment.....	£37.00	
27th Skegness.....	£29.50	£24.00
30th Camden Market.....	£30.00	
June		
6th Gloucester Docks & Quays.....	£26.00	£20.00
13th Bath.....	£30.00	£25.00
16th Shrewsbury.....	£27.00	£22.00
27th Windsor.....	£30.00	£24.00
July		
4th Weston-Super-Mare.....	£29.50	£24.50
11th Chester.....	£29.00	£24.00
18th Hunstanton.....	£31.00	£25.00
22nd Cambridge.....	£29.00	£24.00
25th Wellesbourne Market.....	£16.00	£11.00
28th Cheshire Oaks.....	£29.00	£24.00
August		
1st Llandudno.....	£31.00	£25.00
6th Liverpool.....	£29.00	£22.00
Scotland- Waverley Castle Hotel 27th-31st May 26. 5 Days/ 4 Nights.....	£425 Per Person	
Price Includes- All Coach Hire, 4 Nights accommodation, Evening Meal & Breakfast, Day Excursions, Admission to Falkirk Wheel, and Admission to Ainwick Castle		
Liverpool- Atlantic Tower Hotel 31st July-2nd August 26. 3 Days/2 Nights.....	£180 Per Person	
Price Includes- All Coach hire, Evening meal on 1st night only, 2 nights accommodation, 2 days breakfast, free time round Liverpool		
Llandudno - The Chatsworth House Hotel 10th-14th August 26 5 Days/4 Nights.....	£395 Per Person	
Price Includes- All Coach hire, 4 nights accommodation, Evening Meal & Breakfast, Day excursions, Portmerion Village & 2 course meal and Welsh Highland Railway Journey		

www.phoenixcoaches.org.uk

Tel No 02476 350 811. 50 Southfield Close, Nuneaton. CV10 OBE

Birthday Bard in fine fettle to prove that age is still just a number...



The Bard leads off his birthday shenanigans from Bridge Street. Picture by Marcus Mings 1826001MMR



Stratford MP Manuela Perteghella gets ready to unfurl her flag. Picture by Marcus Mings 1826001MMR

STRATFORD staged the 462nd birthday celebrations of its most famous son at the weekend.

The Shakespeare Birthday Celebrations transformed the town into a centre of pomp and pageantry once again for a packed programme of events.

More pictures opposite

Crowds lined the streets for the annual birthday parade on Saturday morning (April 25) featuring dignitaries from around the world and closer to home, school children, 'Mr Shakespeare' and a plethora of local organisations.

The VIP procession paraded to Bridge Street for the unfurling of the flags before proceeding to

Holy Trinity Church in Old Town via High Street, Chapel Street and Church Street, where flowers were placed on Shakespeare's grave.

The official Shakespeare Birthday Luncheon was then held in the Theatre Gardens from 12 noon.

Events from History performed scenes from Romeo and Juliet outside Shakespeare's Birthplace

on Henley Street, guided tours were run around Hall's Croft, the home of Shakespeare's eldest daughter, Susanna, enabling visitors to see the important work taking place to care for this historic building and take a close-up look at conservation in action.

Meanwhile in New Place Gardens there were hands-on activities inspired by Tudor life including traditional games, making a birth-

day card for Shakespeare, writing with a quill and object handling.

On Sunday (April 26) the celebrations continued with the arrival of Mr Shakespeare at the Town Hall to ceremoniously offer the Quill to the King Edward VI Captain of School.

A procession then accompanied the Quill to Holy Trinity Church where The Shakespeare Service took place.

Say 'yes' to confidence and peace of mind at Lime Tree

Choosing where to live is about more than a home – it's about finding a place designed around the life you want to lead. At Lime Tree, independence is a priority, everything you need is within reach, and support is always there without getting in your way.

And now, thanks to our FlexiRent option, you don't have to wait. Move in and start enjoying everything Lime Tree has to offer – rent while you sell your home, then buy when you're ready. Or simply keep renting. The choice is entirely yours.

Want to find out more? Join us for a **Discovery Day on Wednesday 13th May** and see how you can retire *differently*. Call or visit the website to book your place.



01788 462 214
limetreevillage.co.uk

Dunchurch, Warwickshire

Final 2 bedroom cottages available



RETIREMENT VILLAGES

Retirement Villages is part of AXA IM Alts

Meet the new boss

THE NHS in Coventry and Warwickshire has a new boss.

The Coventry and Warwickshire Partnership NHS Trust (CWPT) has appointed Mary Mumvuri MBE as its new chief executive officer (CEO).

Mary has been chief nursing officer at the Trust since 2022 and acting CEO since August.

She has years of leadership experience from across the NHS plus a strong clinical background as a registered mental health nurse, which has shaped what she describes as her career-long commitment to patient-centred, compassionate and high-quality care.

Last year she received an MBE for services to mental health.

She said: "I am truly honoured to be appointed chief executive officer of Coventry and Warwickshire Partnership NHS Trust. As

a nurse, I know how vital it is to the delivery of strong clinical outcomes that the voice of our patients, carers and staff helps guide every decision we make.

"CWPT has a reputation for providing compassionate care and I look forward to building on the legacy of Mel Coombes MBE, working alongside colleagues and partners to continue improving services for the communities we serve."

Eamonn Kelly, chair of the CWPT, said: "I am absolutely delighted to welcome Mary as our new chief executive officer.

"Mary is an exceptional leader whose background as a clinician and nurse brings invaluable insight and authenticity to the role.

"She shares our unwavering commitment to ensuring patient voice, staff engagement and clinical outcomes are at the heart of everything we do."



From left: Andre Bonnick, contracts manager, and Chantelle Williams, land and partnerships director, at Vistry Partnerships with Platform Housing Group regional head of delivery Pawel Wiktor, project manager Eleanor Day and sales consultant Jasmin Jandou. s

by **Andy Morris**
andy.morris@bullivantmedia.com

THE FIRST new residents have moved into an affordable housing development in Coventry.

The site, on Sphinx Drive and managed by social landlord Platform Housing Group, will feature 196 houses and apartments.

The homes offer housing to local people via affordable rent, social rent and shared ownership, to ease pressures on housing waiting lists and temporary accommodation.

The project received \$12.5million of grant funding from Platform's strategic partner Homes England, the government housing and regeneration agency.

Pawel Wiktor, regional head of delivery at Platform Housing Group said: "It's been great to see people moving in and benefiting from the security and foundations that come with a place to call home.

"I want to thank Vistry Partnerships and our partners at Coventry City Council for ensuring we deliver these quality, affordable options for local people. Combined with our site at Bennetts Road, in nearby Keresley, we're delivering nearly 500 affordable homes for the Coventry area and hope to build more of the right homes for people in the coming years."

Fraser Hope, managing director of Vistry South West Midlands, said: "Seeing the first residents move into their new homes at Sphinx Drive is

a proud moment and an important step forward for affordable housing in Coventry.

"This project demonstrates what can be achieved when partners share the same ambition and vision. It is through that shared vision we have been able to work with Platform Housing Group, Coventry City Council and Homes England to deliver high quality homes that local people can afford."

Construction on the \$51million site began in 2024 and is expected to be completed in the spring of 2027. When complete, there will be a mix of one- and two-bedroom apartments and two-, three- and four-bed houses.

The project will also see Vistry make financial contributions to the nearby Sphinx Sports and Social Club.



Mary Mumvuri MBE is the new CEO of the Coventry and Warwickshire Partnership NHS Trust. s



The Railway Touring Company





Saturday 9 May and 20 June 2026

Steam to Carlisle.

This trip provides a wonderful opportunity for passengers to get out and about during the spring months with the added bonus of steam haulage over the Northern Fells, including the spectacular Settle & Carlisle Railway.

We have a high speed journey down the West Coast Main Line to Carnforth, hauled by a blue Class 86 electric locomotive. We then enjoy a circular steam tour outwards via Shap to Carlisle and back via the Settle and Carlisle line.

- Departs Rugby, Nuneaton and Crewe
- From £120 per person
- Premier Dining available

The Cumbrian Mountain Express

MAGNIFICENT LOCOMOTIVES • SCENIC JOURNEYS • FASCINATING DESTINATIONS

For more information please visit railwaytouring.net or phone **01553 661 500**





On-board dining options available. Refreshments available to purchase on-board. Tables for two can be guaranteed in Premier/First for a supplement of £50 per person subject to availability. Prices start from £120 per person. Junior and family fares available. Booking subject to availability. The Railway Touring Company's standard conditions of booking and travel apply – see website for details. Images are for illustration purposes only – locos/trains may differ. The Railway Touring Company – The Old Stables, Estuary Road, King's Lynn, Norfolk PE30 2HL.

Vote Conservative

THURSDAY 7th MAY

Dear Resident

At this historic local election every single seat on Coventry City Council is vacant because of boundary changes. This gives you a once in a generation opportunity to change who runs the council overnight. We have fielded 54 candidates across the city, so you will have the opportunity to elect three Conservative councillors in each Ward.

We're standing on the Coventry Covenant which has been created through our conversations with you. It's a clear, detailed five-year roadmap showing how we'll turn this city around.

Our message is clear; if you want lower taxes, you should vote Conservative. If you want better pavements and fewer potholes, you should vote Conservative. If you want to see fly-tipping tackled, you should vote Conservative. And if you want to see our greenspace protected from development, you should vote Conservative.

Our councillors have already put these proposals forward but been voted down by other parties. That's why the city needs a Conservative-led council that works for you.

On 7 May, you face a clear choice. Our detailed forward-looking plan, or instability with empty and unrealistic promises.

So, I invite you to be a part of the Coventry Covenant. Use all three of your votes to Vote Conservative on the 7th May for the change Coventry needs.



Gary Ridley
CONSERVATIVE GROUP LEADER
COVENTRY CITY COUNCIL



Deliver lower council tax

- Deliver savings worth £5m and tackle loss-making investments
- Reduce the councillors' allowances bill
- Freeze non-essential borrowing for two years to reduce debt
- Fight the imposition of a tourist tax by the Birmingham-based mayor

Improved highways and pavements

- Prioritise additional investment in pavements and highways
- Undertake an emergency audit of our city's roads and footpaths
- Roll out average speed cameras
- Drive efficiency so it doesn't cost £600 to repair a pothole

Deliver two new nature reserves

- Designate Coundon Wedge and Baginton Fields as nature reserves
- Create a fly-tipping task force and introduce drones
- Review brown bin charges
- Make it easier to access the Whitley Tip

Create jobs and growth

- Enter discussions to save Coventry Airport
- Free late-night parking in the city centre
- Tackle youth unemployment
- Veto a congestion charge and/or workplace parking tax

Create strong communities

- Establish an annual St George's Day event
- Consult residents on the future of the Godiva Festival
- Seek a city-wide injunction to remove illegal traveller encampments
- Greater protection for heritage buildings – like Earlsdon Street



Scan the QR code to view the Coventry Covenant in full on our website

 @CVConservatives
 @coventryconservatives
www.coventryconservatives.com

 **Vote Conservative**

Calendar Girls original gives her backing to latest attempt



A CHEEKY Warwickshire charity calendar has won the support of fundraising royalty – original Calendar Girl Tricia Stewart.

Tricia famously had the idea for the Alternative WI Calendar, which was published in April 1999, and which went on to sell more than 300,000 calendars and raise \$6.5million. The story also inspired a hit film.

More than 30 members of the Warwickshire and West Midlands-based networking group Ladies First Charity Calendar, aged between 19 and 80, will stand in front of the camera striking a series of cheeky poses for the charity calendar – in aid of a host of nominated local and national charities.

The calendar is being shot at Mallory Court Hotel and Spa in Leamington.

Tricia has been announced as guest of honour at the calendar's red carpet launch event at The Birmingham Rep Theatre on October 15. Announcing her support, she also sent a video message to the new calendar cohort.

She said: "We are so proud of our legacy and so proud this carries on. I remember my name and number went out with the press releases and I was on three phones fielding calls for weeks. It was like running another business; using the skills I had learnt from running the office of my own company."

As 'Miss October,' Tricia was one of 11 plucky

Yorkshire ladies, aged between 45 and 65, to pose for the Rylestone and District WI naked calendar, the first of its kind, in 1999. It went on to sell 88,000 copies in the UK and, later, a further 240,000 in America – and many more since.

Behind the latest calendar initiative is Ladies First Professional Development Network – a national networking group which organises events and awards for inspirational female achievers across the UK.

The West Midlands-based organisation, headed up for the last ten years by Tracey McAtamney, is proudly based on three principles referred to as the three I's – to Inspire, to Inform and to Introduce.

Tracey continued: "I'm absolutely thrilled that the original Calendar Girl herself has endorsed our Ladies First Charity Calendar and will be joining us at the launch. It's incredible support from such a true icon.

"Our aim is to raise as much money as possible for over 30 charities close to our hearts, while also growing in confidence and putting ourselves out of our comfort zones."

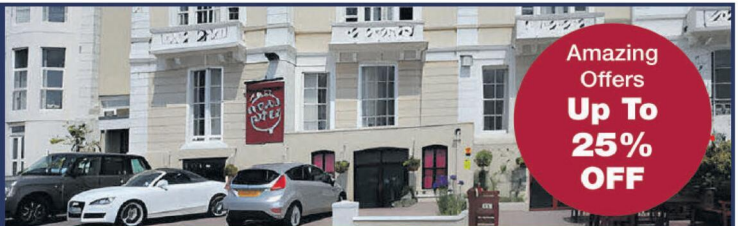
Charities set to benefit include Warwick-based Molly Ollys, Coventry, Warwickshire and Worcestershire Mind, the Leamington-based The Esther Project, Shakespeare Soroptimists, Safeline and RSPCA Coventry and District Branch.



The Ladies First Charity Calendar will be shot at Mallory Court Hotel and Spa in Leamington.

Original Calendar Girl Tricia Stewart has given her backing.

The New Ocean Hotel WESTON-SUPER-MARE



FOUR NIGHT SUMMER STAYS

All include four nights accommodation with 'All You Can Eat' full English breakfast, four course evening meal, live nightly entertainment & optional coach travel

Monday 4th May - Friday 8th May	Was £309 NOW £258pp
Monday 11th May - Friday 15th May	Was £315 NOW £262pp
Monday 25th May - Friday 29th May	Was £329 NOW £272pp
Monday 1st June - Friday 5th June	Was £329 NOW £272pp
Monday 8th June - Friday 12th June	Was £335 NOW £283pp
Monday 22nd June - Friday 29th June	Was £339 NOW £289pp
Monday 31st August - Friday 4th Sept	Was £395 NOW £309pp

WEEKEND BREAKS WITH FREE BAR

All include three nights accommodation with 'All You Can Eat' full English breakfast, four course evening meal, live nightly entertainment, FREE BAR 6pm-10pm & optional coach travel

Friday 1st May - Monday 4th May	Was £285 NOW £259pp
Friday 8th May - Monday 11th May	Was £285 NOW £251pp
Friday 15th May - Monday 18th May	Was £285 NOW £251pp
Friday 22nd May - Monday 25th May	Was £295 NOW £239pp
Friday 5th June - Monday 8th June	Was £295 NOW £262pp
Friday 12th June - Monday 15th June	Was £305 NOW £268pp
Friday 19th June - Monday 22nd June	Was £315 NOW £272pp
Friday 26th June - Monday 29th June	Was £315 NOW £272pp



To book or for further information please call us on **01934 621 839** • www.newoceanhotel.co.uk

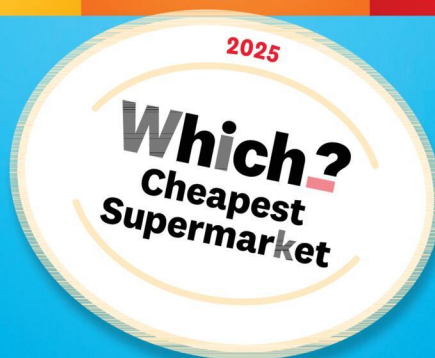


**STILL THE
CHEAPEST
EVEN WITHOUT
A LOYALTY
APP THINGY.**

NO POINTS

NO CARDS

NO FAFF





Having a go at chiselling.



Tempting treats.

by **Andy Morris**
andy.morris@bullivantmedia.com

THE SUN came out for Rugby's first big town-centre event of the year – the Spring Food and Drink Festival.

Hundreds of hungry Rugbeians packed out Regent Street on Saturday to see what was on the menu.

The free event, organised by Rugby Borough Council, featured more than 50 food and drink stalls showcasing local businesses, farms and producers and offering treats including paella, hot-steamed dumplings, loaded tacos, jerk chicken, churros and chocolate brownies.

In Regent Place, skilled woodcar-

ers and turners set up shop next to the Rupert Brooke statue to offer wood-working sessions, giving attendees the opportunity to try their hand at wood turning, chiselling and carving spoons or spatulas.

Children enjoyed face painting and food art, and had an opportunity to test their knowledge with a food and drink quiz.

Live music was performed by local acts Louis Bailie, Lee and Dunk, The Rock Choir, Bit the Pip and Sean McCausland. As usual, *The Observer* took photos of one of Rugby's most popular events.

■ Pictures by Marcus Mings 1826002MMR



Tucking in.

Questions about care? We can help

We know moving into residential care is an emotional and difficult decision with lots to think about.

With over 30 years' experience, we can help you navigate the process of finding the right care home, so that you feel confident about the decision you make – whether that's choosing a WCS Care home, or one outside our group that's more suited to your needs.

If you've got questions about care, or one of our care homes, our Trusted Advisors can help.



Drovers House, Rugby
☎ 07802 728447
✉ p.rainsford@wcs-care.co.uk



Westlands, Rugby
Dewar Close, Rugby
☎ 07802 728443
✉ j.rugg@wcs-care.co.uk





Chow down for food fest fun



Above: Dining al fresco.



Looks like ice cream weather to me.

What a banger of a party!

Tea for two?



OUR BIG SALE IS STILL ON

OPEN 7 DAYS
CV6 5EY

INFLATION EVERYWHERE - BUT NOT AT CARPET MILL!

Everything is going up in price, the same for Carpets and this is why it pays to go to Carpet Mill. Manufacturers of yarn and other materials for making carpets have all had price rises and some manufacturers are busy changing their specifications to many ranges to compensate. They also get surplus rolls that they cannot sell to the big stores as they don't have enough stock left to service them.

Therefore, we are buying those rolls at a **FAT DISCOUNT** and passing it on to **YOU**.



Everything Reduced
BE QUICK

BRAND NAME CARPETS AT LOW LOW PRICES

From quality Axminster to budget cord
We are recommended for our low prices, quality service and extensive range throughout the Midlands. There are no R.R. prices on carpets, so if others give 50% offers or sales discounts, is it 50% off their normal high prices. ALWAYS compare with Carpet Mills normal prices!!!!!!

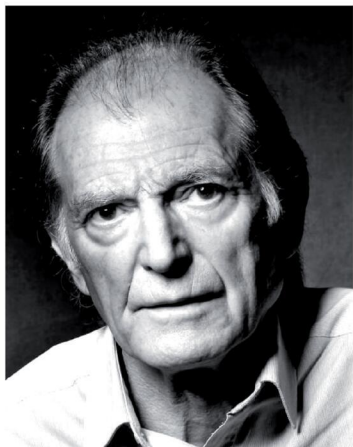
CARPET MILL

CROMWELL STREET (OFF RED LANE) COVENTRY CV6 5EY TEL: (024) 7666 1985

SOME CUSTOMERS TRAVEL MILES - YOU DON'T HAVE TO - WE ARE HERE

www.salecarpet.uk





LEFT: Bafta-winning actor David Bradley. MIDDLE: The cast of The Field, from the Rugby Irish Community Drama Group. RIGHT: Comedian Lou Cox.

Ready for fun at the Fringes...

A HARRY Potter star, an Edinburgh Fringe comedy show, gripping drama and more are on the bill of a week-long arts festival which begins this weekend.

Rugby Theatre's Fringe Week, which takes place from May 2 to 10, will see a variety of acts appearing at the historic town centre venue.

The festival kicks off on Saturday (May 2) with Michael Mansfield KC, one of Britain's most influential barristers, who represented victims and families in landmark cases such as the Hillsborough disaster, the Stephen Lawrence inquiry and the

Birmingham Six miscarriage of justice.

On Sunday (May 3), Bafta-winning actor David Bradley, celebrated for his iconic roles in Harry Potter, Game of Thrones and Doctor Who, stars in an intimate and entertaining event in support of Birmingham Children's Hospital, in which he will reflect on his remarkable career, with behind-the-scenes stories and plenty of good-humoured name-dropping along the way (3 May).

A powerful one-man play that brings the life of Richard Burton vividly to the stage takes place on Wednesday (May 6). Performed by

local actor Lloyd Richards, Playing Burton explores the passion, brilliance and contradictions of one of the greatest actors of the 20th century.

On Thursday (May 7), Black Box Productions presents three short plays, including brand-new drama written by members of Rugby Theatre's writers' group.

Two Voices, One Evening of Poetry (Friday May 8) sees local poet Ann Atkins, along with best-selling author and poet Charlotte Faulconbridge, bring sharp humour, fierce honesty and energy to the stage.

In Having a Baby - The S*** They Don't Tell You in Books (Saturday May 9), comedian Lou Cox performs a preview of her Edinburgh Fringe comedy show, with a no-holds-barred whirlwind of witty anecdotes and graphic storytelling about the emotional rollercoaster that is the journey to motherhood.

To close the week, the Rugby Irish Community Drama Group will perform The Field by celebrated Irish playwright John B Keane. In a small, rural community, a routine land sale sparks a fierce and dangerous battle. For 'The Bull' McCabe, the field he has worked for

years is more than land - it's pride, identity and survival.

Rugby Theatre's joint artistic directors Emma Bright and Mark Tolchard said: "We are thrilled to yet again be bringing an eclectic mix of drama, comedy and spoken word to our stage, in order to showcase even more local talent and visiting acts."

"Fringe Week really does offer something for everyone - we hope to see you there!"

Fringe Week runs from May 2-10. Visit www.rugbytheatre.co.uk or call 01788 541234 for tickets.

THE
JONES FAMILY
JEWELLERS

**IN-HOUSE
JEWELLERY
REPAIRS**

**FINE
JEWELLERY
EXPERTS**

**CASH FOR
GOLD & SILVER**

**WATCH
BATTERIES
& RESEALS**

**WATCH
STRAPS & PEARL
RESTRINGING**

SATCHWELL WALK,
LEAMINGTON SPA
01926 882552

TALISMAN SQUARE,
KENILWORTH
01926 954271

ROYAL PRIORS,
LEAMINGTON SPA
01926 893393

WWW.TJFJEWELLERS.CO.UK



FOR APPOINTMENTS EMAIL: ENQUIRIES@TJFJEWELLERS.CO.UK

PROFESSIONAL
JEWELLER
— Awards 2025 —
RETAIL TEAM
WINNERS 2025

THE BED FACTORY

SPECIALISTS IN BEDS AND MATTRESSES FOR PEOPLE WITH BACK, SHOULDER OR HIP PAIN.

SALE NOW ON

The Harrison Handmade Beds

KING FOR DOUBLE
on all complete beds from Harrison.



Complete Range of Harrison FR **Chemical Free** Beds on Show

Special Price Ottoman

FREE HEADBOARD



Single £449 • Double £499
King £599 • Super King £699

Eppy Wood Frame



3'0 £399 • 4'6 £499
5'0 £549 • 6'0 £599

1 WEEK DELIVERY ON ELECTRIC BEDS

FREE AT HOME SELECTION AVAILABLE



5 POINT MASSAGE MATTRESS NOW AVAILABLE TO TRY IN STORE.

We are specialists in electric adjustable beds and have A Large Selection Available Starting From £999

Avon Fire Side Chair



£699.00

Special Edition 2 Drawer Bed Set

FREE HEADBOARD



3'0 was £539 now £479 5'0 was £769 now £679
4'6 was £639 now £579 6'0 was £899 now £799

Bedroom Furniture



Full Range of Bedroom Furniture Available

Celebrity studio in store



Mammoth Ultimate Health Mattress

2 X FREE PILLOWS WITH ANY DOUBLE, KING OR SUPERKING MAMMOTH MATTRESS

Helps reduce back, shoulder and hip pain

Mattresses	Support Chairs	Beds	Sofas
Riser Recliners	Electric Adjustable Beds	Corner Sofas	Headboards
Chests	Wardrobes	Pictures	Mattress Toppers
Lamps	Pillows	Duvets	Z Beds

Leamington's Largest Independent Bed Retailer

We can supply a large range of beds in 1 to 2 weeks - 3' Single Beds also available - WE SUPPLY WHEN OTHERS FAIL

139 Regent Street, Royal Leamington Spa, CV32 4NX

01926 422404

sales@thebedfactory.co.uk
and www.thebedfactory.co.uk

Trustpilot ★★★★★



The talk will include an account of Sarah, Countess of Warwick. s

A spectacular tribute for Sir David's birthday

by Philippa Mingsins
philippa.mingsins@bullivantmedia.com

A HUNDRED Blue Morpho butterflies will take flight at Stratford Butterfly Farm to mark Sir David Attenborough's 100th birthday.

Youngsters from Stratford Primary School and Thomas Jolyffe Primary School will take part in the celebration at the tourist hotspot on May 8.

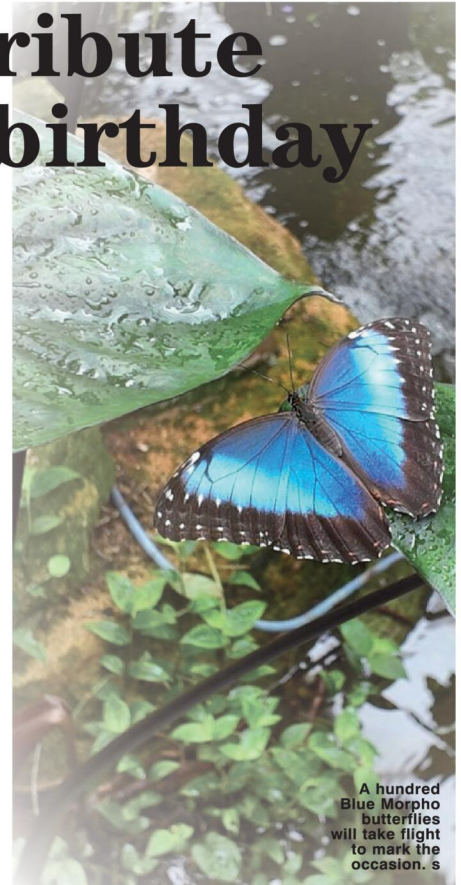
The butterflies will be released into the farm's rainforest flight area in a symbolic gesture that not only celebrates Sir David's legacy but which aims to inspire the next generation to appreciate and protect nature.

Sir David, who has visited the butterfly farm, has long been an inspiration to the team and to millions around the world through his passion for wildlife and conservation.

Butterfly farm owner Clive Farrell, a renowned lepidopterist, will be celebrating his birthday the following day. Clive's passion and expertise have helped make the butterfly farm one of the UK's leading attractions for tropical butterfly conservation and education.

Clive said: "Sir David Attenborough has inspired generations to care deeply about wildlife and the environment. It is a real privilege to celebrate his 100th birthday at the butterfly farm, especially as he has visited us. His 1983 *Wildlife on One: A Touch of the Butterflies* led to long queues forming at my London Butterfly House, following its broadcast.

"Since then, I have never looked back, opening four butterfly houses in the UK, one in Switzerland, one in Florida and the breeding farm in Belize. To share this moment with young people makes it even more special as they are the future custodians of our planet."



A hundred Blue Morpho butterflies will take flight to mark the occasion. s

Talks planned

THE REMARKABLE women of the Regency and Georgian eras are being celebrated in Warwick.

Heritage and Culture Warwickshire is marking the opening of its new exhibition, Warwick Castle Unboxed, with a range of talks and workshops this month and next.

To open the exhibition, Dr Annie Gray, one of Britain's leading food historians, will take 'Regency cuisine' and author Rebecca Wilson will be focusing on Georgian women who made an impact in their day, including Mary Anning, Anne Lister, Mary Wollstonecraft and Lady Sarah Pennington.

Archivist Laura Orriss will also be giving an account of Sarah, Countess of Warwick, whose story is featured in the exhibition.

The opening event will run tomorrow (Saturday) from 1pm until 4pm at The Court House in Warwick.

Visit www.warwickshire.gov.uk/heritageboxoffice for tickets.



Stratford Butterfly Farm owner Clive Farrell (centre) with two Sir Davids: Bellamy, left, and Attenborough.

SUMMER JUST GOT BETTER

SAVE £50 PER PERSON
Use code **SUMMER50**
when you book May and June Holidays.

Discover effortless, elegant escapes with Johnsons Coaches Travel in comfort. Stay in hand-picked hotels. Enjoy every moment.

Lake District Rail, Sail & Castle Trail
3★ The Crown at Wetheral
Sun 24 - Thurs 28 May
From £959pp

Isle of Wight Escape
4★ The Langstone Hotel
Sun 7 - Thurs 11 June
From £1199pp

Rail & Sail in the Western Highlands
3★ Winnock Hotel
Fri 19 - Fri 26 June
From £1049pp

Picturebook North Devon
4★ The Saunton Sands Hotel
Sun 21 - Thurs 25 June
From £879pp

Hassle-Free Travel | Handpicked Hotels | Exceptional Value

Hidden Gems of the North
4★ The Derwent Manor
Mon 15 - Fri 19 June
From £1149pp

A Week on the English Riviera
3★ The Queens Hotel
Fri 26 June - Fri 3 July
From £999pp

Somerset & Devon Steam Spectacular
3★ The Northfield Hotel
Fri 19 - Fri 26 June
From £849pp

View our 2026 Coach Holidays by scanning the QR code



Book now and secure your perfect summer getaway
JOHNSONS
Part of the Coach Travel Group

Visit www.johnsonscaches.co.uk or Call 01564 510 285

DOMESTIC APPLIANCE COVENTRY LTD



HUGE RANGE OF ELECTRICAL APPLIANCES

FANTASTIC SAVINGS

on New
and Graded
Appliances

We offer a repair and service to
all White Goods Appliances
(minimum charge applies)



FREE LOCAL DELIVERY

556 - 558 Stoney Stanton Rd,
Coventry CV6 5FS

024 7798 2957
077 8218 1001

10% OFF
on receipt of
this voucher

Terms and conditions apply



Music Matters

Once again, it's time to *Go For It* in the Prem



MUSIC MATTERS!
Pete Chambers BEM writes for The Observer

I THOUGHT it would be nice to celebrate Coventry winning the Championship by looking at some of the songs that have had a decidedly Sky Blue tint to them.

Of course, *The Enemy's We'll Live and Die* now features somewhat emotionally at every game. I get a thrill every time I see old and young City fans singing about the toilet smelling of desperation. Who knew? That anthem is undoubtedly the soundtrack to our re-entry to the Premier League.

From Singer's Corner, and all over the ground, *The Sky Blues Song* is still proudly belted out.

Jimmy Hill and then-City director John Camkin wrote the words to the *Sky Blue Song* in the autumn of 1962, using *The Eton Boating Song* as its tune.

In December of that year, Hill staged a press conference at the Coventry Theatre to launch the song, assisted by comic legends Sid James and Frankie Howerd. It was sung at the home game against Colchester the following Saturday and Hill then persuaded Ted Heath and his orchestra to record a version of the song.

In 1987, the Sky Blues did the unthinkable and won the most coveted prize in English domestic football, the FA Cup. Of course, every team in the final had to have a record to commemorate the occasion.

As luck would have it, Coventry City's 1987 FA Cup Final song was not one of the laughable, cringe-worthy abominations we



The Coventry squad recording *Go For It*, in 1978. s

normally hear but a pretty good, catchy anthem to get the pulse racing.

Go For It was written by Steve and Heather Taylor and recorded in their living room. It outsold copies of Madonna *Who's That Girl* by 10 to one in Coventry record shops. The song was sung on TV show *Blue Peter* and got to number 61 in the charts.

Then we have the *15 Sky Blue Classics CD* - a compilation of 'City' songs, some good... and some bad.

There's Alan Randall - Nuneaton's finest George Formby

impersonator - singing *The Coventry City Song*, and the great Dave Willetts' *Let's All Sing Together (The Sky Blue Song)*, plus *Sky Blue Army* and *Stand Up For The Sky Blues*, and The Believers (actually the very talented John Garrison) with *Sky Blue Army*, who also released CD single *While The Sky is Blue*.

One very obscure footie-related band was The Nardiellos, named in honour of City's Welsh player of the 70s, Don Nardiello. Apparently, that Coventry and Leamington covers band lasted one gig.

And not forgetting the highly collectable *Players At Ease No.3* LP, featuring Jimmy Hill's Sky Blues taking on such classics as *Sky Blue Rose* and *Pity Me, I'm A Referee*.

The songs *Mr Blue Sky*, by ELO, and *King's Love and Pride* were popular team-entry songs and, speaking of King, those New Wave City fans even did a pre-match concert at Harry Roberts' Testimonial back at Highfield Road in 1984. So as we head for the top echelon of English football, now is the time to enjoy what we have achieved... #PUSB

INTERNATIONAL METALS & CABLE RECYCLING LTD

We purchase all Ferrous and Non Ferrous Metal Batteries and Cables

Collection Service Available

Long Marston Road, Long Marston, Stratford Upon Avon, Warwickshire, CV37 8AQ

01789 721 288

info@imcr.co.uk

Open Mon/Fri - 8am - 5pm

STARRAY EM-i

A NEW WORLD OF SPACE AND STYLE



**SUPER
HYBRID
SUV**

Geely Leamington Spa
Tachbrook Park Dr, CV34 6RH
01926 337447



GREEN4



GEELY CARE
8
YEAR WARRANTY
DEFINED BY QUALITY

Search 'Green 4 Motor Company'

Quote 'OBSERVER' for
£750 OFF any car
in the range.

6
YEAR
MAZDA
WARRANTY



Coventry Mazda - 02476 639100
Leamington Mazda - 01926 337447
Stourbridge Mazda - 01562 215113



An irresistible tale of power and the powerful

The Resistible Rise of Arturo Ui
RSC Swan Theatre,
Stratford

SOME plays have a habit of surfacing when the political climate dictates that we need a subtle, or not-so-subtle, reminder of the parlous times in which we find ourselves, and the precipice which lies only a few steps ahead of us.

Richard III's ruthless power-grabbing, or *The Government Inspector's* lessons in inevitable descent into corruption have timeless lessons to teach and Brecht's *Arturo Ui*, perhaps more firmly-rooted in precise history than most, has plenty to tell us.

Hitler's rise to power is almost as well-documented as the terrible reign which followed it. It is ascending the throne, rather than ruling from it which Sean Linden's production sets out in this production.

Chicago's dockside vegetable trade provides

the economic turmoil of Germany but the characters, quite deliberately, are the same and the casual brutality puts politicians and gangsters on an equal footing.

Mark Gatiss opens his RSC account with a performance he may well never surpass. Starting face down in his own impoverishment, his is truly a rise through confidence, conviction and, eventually, delusion with every stage detailed and defined.

Tentative lessons in projection and presentation become a gradual mastering of how to hold a dominant pose and, as the inner self-belief grows so does the outer, through goose-stepping, heel-clicking, uniform regalia and, at the very end, the first tentative move to a full Nazi salute.

It's a rise which is all the more chilling for being believable and it's a journey made with calmness, doubt, belligerence and not a little humour. In occasional nods to the times in which we live, a hint of US presiden-

tial delivery slips in but this remains steadfastly a play about Hitler from which we may draw inferences rather than blatant soap-boxing.

This is an impressive RSC-hallmarked production which throws almost everything at the need for spectacle. Georgia Lowe's design makes full use of height and colour and gives the setting of the cauliflower trade and its characters a colour and vibrance bordering on the cartoonesque.

There are nice touches everywhere. Vegetables turn out to be lethal weapons, signs tell us when to applaud and the fourth wall lies in tatters, as you'd expect from this author.

For all the lessons that history, and the accusatory stares of actors from the stage can teach us, we still seem pitifully helpless when it comes to resisting the irresistible.

As befits the time and the topic, this is a violent play. Intimidation and execution are handled through eye-catching choreography coupled with a lot of offstage

gunshots. Most chilling is the very blunt execution of a lone, bloodied woman raising her voice against the regime and being shot in fairly bald light right there on the stage.

Music punctuates the action but in truth, is perhaps a little less impressive than its credentials led us to believe it might be.

For all its colour and bombast and the irrefutable power of its message, this is a production which does have faults. Brecht's trademark heavy-weight didacticism has not been entirely addressed in Stephen Sharkey's new version. Some scenes, particularly in the second half, drag and lose their focus and the whole show would benefit from losing a good half-hour.

In the end we're left with a production which is strong on style and presentation but which may need the length of its run to arrive at the peak of where it could go.

Matthew Salisbury



Mark Gatiss as Arturo Ui. Picture by Marc Brenner (RSC). s

ADVERTISEMENT

Amanda's Journey: From Resilience to Renewal and Joy

A remarkable transformation is worth celebrating, and this week we shine a light on one local woman whose journey proves just how powerful determination, community, and support can be.

Having lost an incredible 10 and a half stone, Amanda Sheraton has not only transformed her health but reshaped her entire life. Her story is one of quiet resilience—of showing up week after week, making steady changes, and embracing a new way of living that prioritises wellbeing without losing sight of joy. It's the kind of achievement that doesn't happen overnight, but through commitment, courage, and a willingness to believe that change is possible.

But what makes her journey particularly special is the role of community. A familiar and much-loved face within her local Slimming World group, held at the United Reformed Church in Hillmorton on Wednesdays with Maz, Amanda is known for her enthusiasm, encouragement, and genuine connection with others. Whether celebrating milestones or offering support on tougher weeks, she embodies what group support is all about—lifting others as you climb.



Her recent civil ceremony with her partner marks another beautiful chapter in her story. It's a moment that symbolises not just love, but renewal and confidence—a reflection of the new life she has worked so hard to build.

Amanda's journey is a powerful reminder that weight loss is about far more than numbers on a scale. It's about gaining confidence, building



relationships, and creating a life that feels fuller, healthier, and happier. Stories like hers inspire us all—not because they are easy, but because they show what's possible.

Slimming World



Slimming World

feel
real
good

less than
£5*
a week



Mondays

9.15am
Dunchurch Village Hall
Rugby Road, Dunchurch
CV22 6PN
Call Kelly W
07777145560

Mondays

5.30pm
Harbury School Hall,
Mill Street, Harbury
Call Kelly W
07777145560

Tuesdays

5.30pm
Hoskyn Community Centre, 12
Bilton Road, CV22 7AB
Call Tina
07496 845777

Wednesdays

7.30am, 9.00am and 10.30am
United Reformed Church,
40 Hillmorton Road, Rugby
CV22 5AD
Call Maz
07805 191429

Wednesdays

5.30pm and 7.00pm
Rugby United Reformed Church
CV22 5AD
Call Fiona
07876 450362

Thursdays

5.30pm and 7.00pm
Rugby Borough FC, Kilsby
Lane, Hillmorton, Rugby
CV21 4PN
Call Kelly W
07777 145560

Thursdays

5.30pm and 7.00pm
Christ Church, Helvellyn Way,
Brownsover CV21 1QG
Call Kelly T
07806 673606

Fridays

8.00am and 9.30am
Christ Church, Helvellyn Way,
Brownsover
CV21 1QG
Call Tina
07496 845777

Fridays

9.00am and 10.30am
Sacred Heart Church
Limetree Ave CV22 7QT
Call Mary 07799 264779

Saturdays

7.30am
United Reformed Church,
Hillmorton Road, CV22 5AD
Call Maz
07805 191429

Saturdays

8.30am and 10.00am
Bilton Bowling and Tennis Club,
Bawnmore Road, CV22 7QH
Call Kelly T
07806 673606

real food, real support, real results

*Visit slimmingworld.co.uk/offers for terms and conditions.

#ALSLetsMe

www.arnoldlodge.com



ARNOLD LODGE

4-18 yrs Co-educational Independent Day School



ALS Lets ME ACHIEVE

What will your child be?



JOIN US AT OUR OPEN DAY

ON SATURDAY 9TH MAY 2026 10:00AM - 1:00PM



01926 778050 admissions@arnoldlodge.com
 15-17 Kenilworth Rd, Leamington Spa, Warwickshire CV32 5TW

Moving Forward: A Fresh Approach to Independence Has Arrived in Leamington Spa

Max Mobility Ltd has taken an exciting step forward as its 'New Store is Now Open' in the Royal Priors shopping centre, Leamington Spa, bringing trusted expertise and a smoother path to independent living.

Already firmly established with its flagship store in Coventry, Max Mobility has built a reputation that continues to go from strength to strength, driven by exceptional products, outstanding value, and customer care that is always a step ahead. Now, that same dedication is arriving in Leamington Spa, ready to support the local community every step of the way.



At Max Mobility, independence is never out of reach. With an extensive range of high-quality mobility solutions, customers can find the right support to keep life moving in the right direction. From mobility scooters that help you get back out and about, to powerchairs that offer comfort and control, alongside wheelchairs, riser recliner chairs and essential daily living aids, every product is designed to help customers stay active, confident, and firmly in control.

What truly sets Max Mobility apart is its people-first approach. There is no pushy sales pitch, no pressure, just honest, expert advice that helps customers navigate their options with confidence. The experienced team works closely with every individual, ensuring each solution is the right fit, not just for today, but for the road ahead.

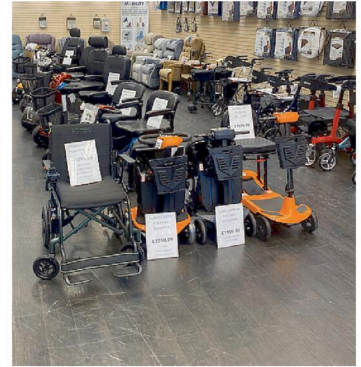
Customers can also take things at their own pace with home demonstrations, making it easier to try before they decide. With professional delivery, expert installation, and dedicated after-sales care, support doesn't stop at the door, it continues long after.

All the staff of Max Mobility Ltd, say: *"We're incredibly proud to be opening in Leamington Spa. Everything we do is focused on improving people's quality of life, from the products we offer to the way we support our customers. This new store allows us to bring our expertise, our values, and our commitment to exceptional service to even more people across the region."*

With its arrival in Leamington Spa, Max Mobility Ltd is helping customers move forward with confidence, regain their independence, and enjoy life without limits.



Max Mobility Ltd, Royal Priors, Leamington Spa, NOW OPEN
www.maxmobilityltd.co.uk



SPECIAL OPENING VOUCHER DEALS

NEW STORE NOW OPEN IN THE ROYAL PRIORS SHOPPING CENTRE LEAMINGTON SPA

4mph Boot Scooter
Up to 8 miles range
Easily Transportable

SAVE £200
WAS £799



OPENING DEAL £599.99

Four Wheel Walker
Folding Rollator
Padded Seat

SAVE £70
WAS £149.99



OPENING DEAL £79.99

Riser Recliner Chair

SAVE £200
WAS £699.99



OPENING DEAL £499.99

Light Weight Wheel Chair

SAVE £90
WAS £249.99



OPENING DEAL £159.99

Hurricane Walking Stick
ONLY ONE PER CUSTOMER

SAVE £20
WAS £29.99



OPENING DEAL £9.99

Wheelchairs from **£129.99** • Motorised Bath Lifts from **£279.99** • Commodes from **£59.99** • 3 Wheel Walkers from **£69.99**

CALL TO BOOK YOUR SCOOTER SERVICE

07869 961147

Max Mobility Ltd, 8 Lower Mall,
Royal Priors Shopping Centre, Cv32 4XU
www.maxmobilityltd.co.uk
Pictures for illustration • Prices with VAT Exemption

All aboard for a unique celebration



ONE OF the World's most famous bus routes - the Number 11 Birmingham Outer Circle - celebrated its centenary on Sunday.

Every day, there are up to 36,000 journeys on the National Express West Midlands route which covers a 27-mile radius.

It is one of the longest bus routes in Europe and takes up three hours to complete.

The route has 260 bus stops, 233 schools, colleges and other educational institutions, 40 pubs, 19 retail centres, six hospitals and one prison - this route links some 15 commercial centres and passes by Cadbury World in Bourneville and the Villa Park football stadium.

The number 11 buses have changed where they terminate.

Since July 2021, 11A services have terminated at Perry Barr and then return as an 11C to Acocks Green, with 11C buses terminating at Erdington, returning as a 11A service to Acocks Green.

This has improved the reliability of the service due to roadworks and congestion along the route.

The route has also inspired a song by the Woodbines in 1999, a dance, and Bromsgrove author Jonathan Coe's bestselling novel

'Number 11'. There are two services on the 11 timetable which undertake the same route but in opposite directions - the 11C which goes clockwise and the 11A which goes anti-clockwise

Adam Rideout, the head of customer experience and marketing at NX Bus said: "Bus is by far the most popular form of public transport here in the West Midlands and our iconic 11 service has long-been a Brummie favourite since it first started some 100 years ago.

"With buses running up to every 10 minutes, single adult tickets still only £3 and a day ticket - allowing passengers to explore the region with unlimited travel on the day - only £5.20. it remains a very popular route that connects our customers in a number of key areas around the city and is part of the city's transport history."

Transport Museum Wythall will be celebrating the 100th anniversary of Birmingham's iconic 11 bus service next month.

The special trips on different buses through the ages of the 11 route are part of Transport Museum Wythall's anniversary celebrations which will take place on the late May bank holiday weekend - on Sunday and Monday, May 24 and 25.

Visit wythall.org.uk for more on the event. And go to nxbus.co.uk/west-midlands/services-timetables/ and click through for more on the number 11C and 11A and the times services run.

The famous number 11 Outer Circle bus route celebrated its centenary on Sunday. Picture by Tony Brown, via Tony Hunter. On May 24 and 25, there will be special trips on different buses throughout the ages of Birmingham's famous 11 route. s



Enjoy Exclusive, Evergreen Spring Edition of

Seasons



Following on from the fantastic response to our debut 'Winter' edition of Seasons, we're delighted to announce that Seasons 'Spring' edition has now Sprung.

As the days grow longer and our towns, villages and the countryside emerge from the long dark days of winter, we are all enjoying the arrival of the 'Spring' of 2026.

Pick up a copy locally for free, or simply browse on line
www.seasons-magazine.com

The 'Spring' edition of Seasons is a celebration of all things 'local'. It's uplifting, inspiring and quintessentially local across the three counties of Warwickshire, Worcestershire and the West Midlands.

The beautifully glossy A5 magazine is freely available in print, from a major supermarket near you - and, the 'Spring' edition of Seasons is also available 247 on line and...it's being showcased across all of our local Observer and Standard Newspapers, websites and social media platforms, and will continue to be so, for the next 12 months.

Enjoy the exclusive, evergreen, 'Spring' edition of Seasons by logging on to www.seasons-magazine.com

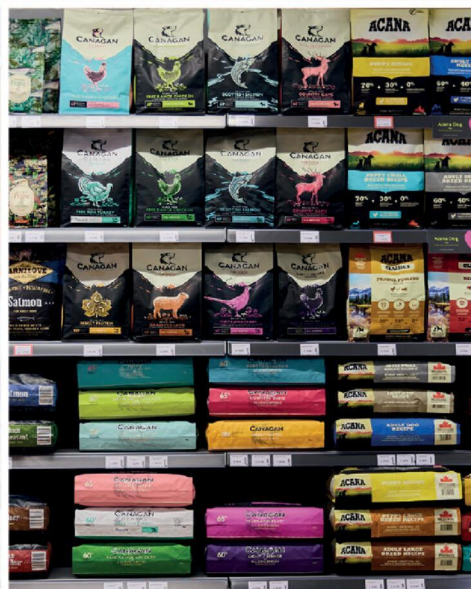
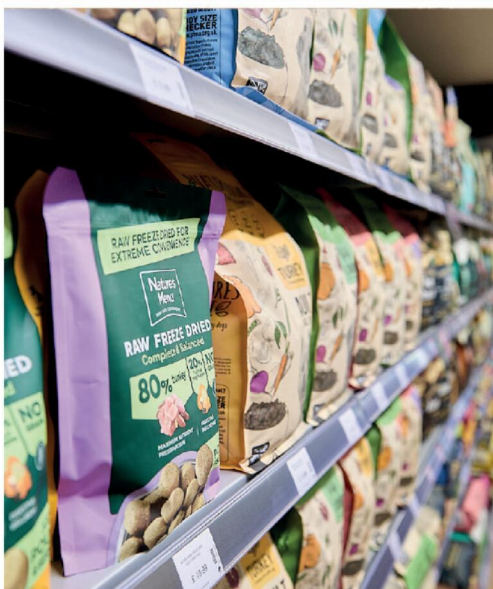
You can still browse the 'Winter' edition of Seasons 247 and now, you can enjoy the 'Spring' edition of Seasons too!

If you'd like your business to be featured in the next edition of Seasons, or if you'd like more details - just call **01527 588688** and speak to Kelly, Caroline, Roisin, Debra, Paul, Gareth or Sharon.

Seasons magazine is brought to you, by your local Observer and your local Standard Newspaper Team

Just for Pets

The UK's Best Rated Dog Foods In Store Now!



Visit your local store today:

Just for Pets Leamington Leamington Shopping Park, Tachbrook Park Dr, Leamington Spa CV34 6RH (next to M&S)

Just for Pets Coventry Arena Shopping Park, Rowley's Green, Coventry CV6 6AS (next to M&S)

Just for Pets Nuneaton Horeston Grange Shopping Centre, Nuneaton CV11 6GU (next to Farmfoods)

www.justforpets.co.uk

**ARBURY HALL
NUNEATON
MAY DAY BANK HOLIDAY
OPENING**



**The Hall, Gardens and Stable Tearooms will be open on
Sunday 3rd &
Monday 4th May 2026
from 1pm until 6pm
(last tour 4.30pm)**

Dogs on leads are welcome in the gardens.

For further details - 01676 540529
www.arburyestate.co.uk



Are you happy with West Mids force?

WEST Midlands Police and Crime Commissioner (PCC) Simon Foster has launched a to gauge the trust and confidence of the 2.9million residents across the West Midlands police force area.

Starting this week and running through to 2028, the two-year study will provide a continuous stream of feedback with data being fed back to the PCC on a quarterly basis.

It is hoped regular reporting will enable the PCC to set policing priorities and hold West Midlands Police to account for its performance in real-time.

Independent researchers from Birmingham-based M-E-L Research will conduct face-to-face, door-to-door interviews with households selected at random across Birmingham, Coventry, Dudley, Sandwell, Solihull, Walsall and Wolverhampton.

Mr Foster, said: "Since I was first elected in 2021, I have dedicated myself relentlessly to delivering justice, safety and security for the people and communities I have the honour and privilege to represent."

"This two-year study, with its quarterly updates, will give us the constant feedback needed to ensure West Midlands Police is effective, efficient and responsive to our needs. This survey is about giving the public a direct, ongoing voice in how they are policed."

The survey will be conducted via 15-minute interviews.

Results will be reported every quarter to the PCC to help identify areas of concern and measure improvements in public satisfaction.

All M-E-L Research interviewers will carry a Market Research Society ID card and a formal letter of authority from the West Midlands PCC.

Participation in the survey is voluntary and all data will be handled in accordance with UK general data protection regulation and the Data Protection Act 2018, according to the PCC's office.

The findings will inform policing priorities and ensure resources are used effectively to improve community safety and build public confidence in West Midlands policing.



FIVE-STAR RATED EYE HOSPITAL
Local World-Class Consultants
Doctify page: www.doctify.com/uk/practice/midland-eye#about
Google review page can just simply be found if you Google search Midland Eye
Trust pilot: <https://uk.trustpilot.com/review/midlandeye.com>



Midland Eye Clinic provides fast access to specialist eye care without long NHS waiting times. Run by highly experienced consultant Ophthalmologists and world class eye surgeons. All clinicians are highly trained and our surgeons are Fellows of the Royal College of Ophthalmologists.

- Diagnosis and treatment of a wide range of eye conditions
- Specialist consultations, medical treatments and surgical procedures
- Free suitability assessments, with no pressure to continue treatment journey
- Friendly, supportive team from reception through to consultants
- Focus on making high-quality eye care affordable and accessible
- Combines advanced technology with compassionate, personalised treatment
- Extended opening hours, Monday – Friday 8am – 8pm. With weekend availability too
- Specialists in cataract laser eye surgery, dry eye, retina and glaucoma



Laser Eye Surgery



Cataract Surgery



Glaucoma

MIDLAND EYE CLINIC
56 Virginia House, Warwick Road, Olton, Solihull B93 7HX | Tel: 0121 711 2020
and 50 Lode Lane, Solihull (next to Solihull Hospital) B91 2AW
MIDLANDEYE.COM



Modern eye treatment pioneers



5 star rated



Unrivalled facilities



Based in Solihull



Interest free payments



Complimentary aftercare

Classified

TELEPHONE 01527 588688 FACSIMILE 01527 584371

PUBLIC NOTICES

PUBLIC NOTICES

Warwickshire County Council

ROAD TRAFFIC REGULATION ACT 1984
 Warwickshire County Council has made the following Temporary Traffic Orders:

MAIN STREET, NEWBOLD AND HARBOROUGH ROAD, HARBOROUGH MAGNA & RUGBY
Order Effect: Roads closed to vehicular traffic.
Reason for Order: To enable water network renewal works.
Order Commences: 7 May 2026 for up to 18 months.
Anticipated Completion: 4 June 2026.
Access & Diversion: Main Street, Newbold Road, Leicester Road, Watling Street, A5, Lutterworth Road, Rugby Road, Pailton Road and vice versa.
Contractor: Severn Trent Water, Tel: 0800 783 4444.

PUBLIC BRIDLEWAY R130 IN THE PARISH OF LONG LAWFORD
Order Effect: Bridleway closed to all traffic except for pedestrians and pedal cyclists.
Reason for Order: To avoid the likelihood of danger to the public as the result of a bridge in danger of collapse.
Order Commences: 2 May 2026 for up to 6 months.
Access & Diversion: Please take an alternative route using Public Highways.
Contractor: WCC Rights of Way Team, Tel: 01926 412909.

SHAKESPEARE GARDENS, RUGBY
Order Effect: Road closed to vehicular traffic.
Reason for Order: To safely enable short comm pipe renewal.
Order Commences: 6 May 2026 for up to 18 months.
Anticipated Completion: 8 May 2026.
Access & Diversion: Shakespeare Gardens and vice versa.
Contractor: Chevron Traffic Management Ltd, Tel: 0330 008 0820.

CHURCH HILL AND FINCEARE LANE, STRETTON-ON-DUNSMORE
Order Effect: Road closed to vehicular traffic.
Reason for Order: To safely enable boundary road repair.
Order Commences: 4 May 2026 for up to 18 months.
Anticipated Completion: 4 May 2026.
Access & Diversion: Brookside, School Lane, Platt Lane, Froebord Lane, Oxford Road, Finceare Lane and vice versa.
Contractor: Chevron Traffic Management Ltd, Tel: 0330 008 0820.

BECKTOD CLOSE, RUGBY
Order Effect: Road closed to vehicular traffic.
Reason for Order: Works to lay duct in carriageway and in footway.
Order Commences: 4 May 2026 for up to 18 months.
Anticipated Completion: 6 May 2026.
Access & Diversion: No diversion available.
Contractor: Core Highways, Tel: 0330 016 9688.

WOOD STREET, RUGBY
Order Effect: Road closed to vehicular traffic.
Reason for Order: Works to install new service in footway and carriageway.
Order Commences: 5 May 2026 for up to 18 months.
Anticipated Completion: 8 May 2026.
Access & Diversion: Wood Street, Railway Terrace, Manor Road, Park Road and vice versa.
Contractor: Cadent Gas, Tel: 0800 111 999.

Warwickshire County Council proposes to make the following Temporary Traffic Orders:

HIGH STREET (SERVICE ROADS), RUGBY
Order Effect: High Street Service Roads, Rugby closed to vehicular traffic. In addition, vehicular traffic will be prohibited from making a Right Turn and a Left Turn from High Street, Rugby onto High Street Service Roads.
Reason for Order: To enable repair/replacement of defective manhole covers and frame.
Order Commences: 17 May 2026 for up to 18 months.
Anticipated Completion: 17 May 2026.
Access & Diversion: Traffic flow along the main High Street Rugby will be maintained under signals.
Contractor: CSP, Tel: 07918 389363.

For all of the above temporary orders, pedestrian access to and egress from properties and land situated adjacent to the length of road to be closed will be maintained at all times. Vehicular access will be maintained where possible.

To report any problems with these works or for further details of our current & planned roadworks visit our website warwickshire.gov.uk/roadworksmap or call us 01926 412515.

S Duxbury, Director of Strategy, Planning & Governance,
 Shire Hall, Warwick CV34 4RL Date 30 April 2026

Keeping you up to date with all the latest information on Planning Proposals, Traffic Notices, Goods Vehicle Operator Licences, Licences To Sell Alcohol, Probate Notices.....

PUBLIC NOTICES

Warwickshire County Council

ROAD TRAFFIC REGULATION ACT 1984
 Warwickshire County Council has made the following Temporary Traffic Orders:

PINEWOOD AVENUE, WOOD END
Order Effect: Road closed to vehicular traffic.
Reason for Order: Works to lay approximately 6m of duct.
Order Commences: 4 May 2026 for up to 18 months.
Anticipated Completion: 6 May 2026.
Access & Diversion: No diversion available.
Contractor: Quantum Traffic Management, Tel: 01724 786286.

For all of the above temporary orders, pedestrian access to and egress from properties and land situated adjacent to the length of road to be closed will be maintained at all times. Vehicular access will be maintained where possible.

To report any problems with these works or for further details of our current & planned roadworks visit our website warwickshire.gov.uk/roadworksmap or call us 01926 412515.

S Duxbury, Director of Strategy, Planning & Governance,
 Shire Hall, Warwick CV34 4RL Date 30 April 2026

PUBLIC NOTICES

WARWICKSHIRE COUNTY COUNCIL

ROAD TRAFFIC REGULATION ACT 1984 - SECTION 23 PROPOSED PUFFIN CROSSING SCHOOL LANE NEAR EXHALL GREEN, EXHALL
 Warwickshire County Council hereby gives notice of its intention to install a Puffin Crossing on School Lane near Exhall Green, Exhall in accordance with the planning condition for the development of 129 dwellings (Nuneaton and Bedworth Borough Council Planning Application reference is 035503 & 037022).

A copy of this notice and a plan showing the location of the proposals can be inspected at Warwickshire Direct in Shire Hall, Market Place, Warwick and at Nuneaton and Bedworth Borough Council offices, Town Hall, Colton Road, Nuneaton during opening hours.

The plan is also available to view on our website www.warwickshire.gov.uk/traffic/signals or please use the contact details below to request a copy.

Any enquiries relating to the proposals may be made to Alex Williams, Engineering Design Services, Warwickshire County Council (telephone number 02478 368810). Any objections or representations to the proposals, which must be in writing and specify the grounds on which they are made, should be addressed to Alex Williams, Engineering Design Services, Environmental Services, Communities Directorate, PO Box 43, Shire Hall, Warwick, CV34 4SX or sent by email to alexwilliams@warwickshire.gov.uk (Objections, representations, and the name of the objector or person making a representation, will normally be treated as public information and may be published. For further information on how Warwickshire County Council processes personal data please refer to the Customer Privacy Notice which is available at <https://www.warwickshire.gov.uk/privacy>). Objections and representations must be sent so as to be received by 28th May 2026.

The Council regrets any inconvenience that may be caused due to the works.

Richard Fenwick, Director of Highways, Communities and Directorate, Shire Hall, Warwick Date: 30 Apr 2026

WARWICKSHIRE COUNTY COUNCIL
Mr S Aziz is applying for the new grant of a Premises Licence for 19 Clemons Street, Leamington Spa, CV31 2DW.

If granted the application will allow the following licensable activities to take place:
Late Night Refreshment (On and Off the Premises)

Any person wishing to make representations in relation to this application may do so by writing to the Licensing Authority:
 Warwick District Council
 Licensing, Town Hall Parade
 Royal Leamington Spa
 Warwickshire CV32 4AT
licensing@warwickdc.gov.uk

Representations may only be made for 28 consecutive days from the date of this Notice.

A copy of the application for the grant of the above licence is kept by the Licensing Authority at the above address. The application can be viewed Monday to Thursday 9.00 am to 5.00 pm, and 9.00 am to 4.30 pm on Fridays, except Bank Holidays.

It is an offence knowingly or recklessly to make a false statement in connection with an application. The maximum fine for which a person is liable on summary conviction for making a false statement is a Level 5 fine on the Standard Scale.

24th April 2026

PUBLIC NOTICES

Goods Vehicle Operator's Licence

Parminder Singh trading as Proship Transport Ltd of 22 Langdale Close Rugby, CV21 1JY is applying for an amendment on his current licence to use a new operating centre at J Coates Garage Services Ltd, Unit 2, Shawell Depot, Watling Street, Lutterworth, Leicestershire, LE17 6AR 2 goods vehicles and 2 trailers.

Owners or occupiers of land (including buildings) near the operating centre(s) who believe that their use or enjoyment of that land would be affected, should make written representations to the Traffic Commissioner at Quarry House, Quarry Hill, Leeds, LS2 7UE, stating their reasons, within 21 days of this notice.

Representors must at the same time send a copy of their representations to the applicant at the address given at the top of this notice. A guide to making representations is available from the commissioner's office.

PUBLIC NOTICES

NOTICE OF SUBMISSION OF THE RUGBY BOROUGH LOCAL PLAN 2025-2042 FOR EXAMINATION STATEMENT OF FACT

Rugby Borough Submission Local Plan 2025-2042

Regulation 22 of the Town and Country Planning (Local Planning) (England) Regulations 2012 (as amended)

Notice is given in accordance with the above Regulations that Rugby Borough Council has submitted the Rugby Submission Local Plan to the Secretary of State on 27 April 2026 for independent examination.

The Submission Local Plan covers the borough of Rugby.

WHERE TO VIEW THE DOCUMENTS

All documents can be viewed on the Council's website:
<https://www.rugby.gov.uk/en/submission-local-plan>

Hard copies of the Submission Local Plan document, the Sustainability Appraisal, the Policies Map, the Consultation Statement, and Consultation Statement Addendum, and other supporting evidence base documents will be deposited at the following locations for inspection within normal opening hours:

- Rugby Borough Council's offices, Town Hall, Evreux Way, Rugby, CV21 2RR
- Rugby Library and Information Centre, Little Elbow Street, Rugby, CV21 3BZ
- Dunchurch Community Library, The Green, Dunchurch, Rugby, CV22 6PA
- Wolston Library & Information Centre, Manor Estate, Wolston, CV8 3GX

Representations received in response to the consultation on the Proposed Submission Local Plan (pursuant to Regulation 20) are published on the website only.

All documents referred to in Regulation 22 (5) (i) to (iii) of the Town and Country Planning (Local Planning) (England) Regulations 2012 (as amended).

PUBLIC NOTICES

LICENSING ACT 2003 - Public Notice

Mr S Aziz is applying for the new grant of a Premises Licence for 19 Clemons Street, Leamington Spa, CV31 2DW.

If granted the application will allow the following licensable activities to take place:
Late Night Refreshment (On and Off the Premises)

Any person wishing to make representations in relation to this application may do so by writing to the Licensing Authority:
 Warwick District Council
 Licensing, Town Hall Parade
 Royal Leamington Spa
 Warwickshire CV32 4AT
licensing@warwickdc.gov.uk

Representations may only be made for 28 consecutive days from the date of this Notice.

A copy of the application for the grant of the above licence is kept by the Licensing Authority at the above address. The application can be viewed Monday to Thursday 9.00 am to 5.00 pm, and 9.00 am to 4.30 pm on Fridays, except Bank Holidays.

It is an offence knowingly or recklessly to make a false statement in connection with an application. The maximum fine for which a person is liable on summary conviction for making a false statement is a Level 5 fine on the Standard Scale.

24th April 2026

PUBLIC NOTICES

SPECIAL GENERAL MEETING NOTICE

Sunday 10th May 2026 at 11am
The Copper House Club Ltd
 Kenilworth,
 CV8 2FZ

Open to fee paying members of the club for the year 2026 ONLY.

Membership cards will be required on entry.

PUBLIC NOTICES

APPLICATION FOR A VARIATION OF PREMISES LICENCE UNDER THE LICENSING ACT 2003

Firestone Inns Ltd has applied to vary a Premises Licence for Globe, 10 Theatre Street, Warwick CV34 4DP to amend the layout of the premises and conditions. The application can be inspected at the address below during standard office hours or online at www.warwickdc.gov.uk

Representations must be made in writing by 26 May 2026. Licensing, Warwick District Council, Town Hall, Parade, Royal Leamington Spa CV32 4AT Email: licensing@warwickdc.gov.uk

It is an offence, under section 158 of the Licensing Act 2003, to make a false statement in or in connection with this application. Those who make a false statement may be liable on summary conviction to a fine of any amount.

PUBLIC NOTICES

Goods Vehicle Operator's Licence

Lutterworth Logistics Limited of 29 Centurion Way, Meridian Bus, Park, Leicester, LE19 1WH is applying for a licence to use Unit 1, DIRFT, 55 Crick Road, Clifton Upon Dunsmore, CV23 0AB as an operating centre for 5 goods vehicles and 3 trailers.

Owners or occupiers of land (including buildings) near the operating centre(s) who believe that their use or enjoyment of that land would be affected, should make written representations to the Traffic Commissioner at Quarry House, Quarry Hill, Leeds, LS2 7UE, stating their reasons, within 21 days of this notice. Representors must at the same time send a copy of their representations to the applicant at the address given at the top of this notice. A Guide to Making Representations is available from the Traffic Commissioner's office.

PUBLIC NOTICES

GERHARD BERNARD BOSDORFF (Deceased)

Pursuant to the Trustee Act 1925 any persons having a claim against or an interest in the Estate of the above named, late of 154 Buckley Road, Leamington Spa, CV32 7DL, who died on 01/05/2025, are required to send written particulars thereof to the undersigned on or before 02/07/2026, after which date the Estate will be distributed having regard only to the claims and interests of which they have had notice.

DONOVAN ALBERTSON LAW LIMITED,
 Prospect House, 40 Dummer Place,
 CV22 5AE

PUBLIC NOTICES

JENNIFER BEATRICE DURGAHED (Deceased)

Pursuant to the Trustee Act 1925 anyone with a claim against or an interest in the Estate of the deceased, late of 16 Dickens Road, Warwick, Warwickshire, CV34 5NR, who died on 24/02/2026, must send written details to the address below by 02/07/2026, after which the Estate will be distributed with regard only to the claims and interests notified.

Co-operative Legal Services Limited,
 650 Aztec West, Almondsbury, Bristol, BS32 4SD.
 Ref: 7523341P

PUBLIC NOTICES

JANET ANNE HUTT (Deceased)

Pursuant to the Trustee Act 1925 anyone with a claim against or an interest in the Estate of the deceased, late of Thickhorn Close, Kenilworth, Warwickshire, CV8 2AF, who died on 08/01/2026, must send written details to the address below by 02/07/2026, after which the Estate will be distributed with regard only to the claims and interests notified.

Seymours Solicitors Limited,
 1 Russell Street, Leamington Spa, CV32 5QA.
 Ref: SF23467

PUBLIC NOTICES

PUBLIC SERVICE VEHICLE OPERATOR'S LICENCE

Warwickshire Travel Ltd of 80, Warwick Road, Wolston, Coventry, CV8 3HA is applying to the Traffic Commissioner for a Public Service Vehicle Operator's Licence to operate 20 vehicles from the operating centre at Whitehouse Farm, Oxford Road, Pricethorpe, Rugby CV23 9QD and to operate 20 vehicles from the operating centre at Unit 6&7, Dunchurch Trading Estate, Rugby, CV23 9LN.

Owners or occupiers of land (including buildings) near the operating centre who believe their use or enjoyment of that land would be affected, may make written representations to the Traffic Commissioner at: Office of the Traffic Commissioner, 38 George Rd, Birmingham, B15 1PL.

Representations must be made within 21 days of the date of this notice.

Representors must at the same time send a copy of their representations to the applicant at the address given above. A guide to making representations is available from the Traffic Commissioner's office.

PUBLIC NOTICES

WEST NORTHAMPTONSHIRE COUNCIL

NOTICE OF MODIFICATION ORDER SECTION 53 OF THE WILDLIFE AND COUNTRYSIDE ACT 1981 (COUNTY OF NORTHAMPTONSHIRE DEFINITIVE MAP) DEFINITIVE MAP MODIFICATION ORDER

PARISH OF BARBY ORDER NO. 2 2026 PATH NO. EC6

The above Order made on 16 April 2026, if confirmed as made, will modify the Definitive Map and Statement for the area by: Upgrading Public Bridleway, EC6, Parish of Barby, to Public Restricted Byway, shown as a broken green line on plan reference EC6/ME6/Plan-1.

It starts from its junction with Welton Road, the Ridgeway and Longdown Lane labelled point A (grid reference SP 5428 6953). It runs generally north west for approximately 1088 metres to its junction with Elkington Road, bridgeway EC5 and public footpath EC7 labelled point B (grid reference SP 5342 7018). The width of the route is 12.19 metres. The surface type is unspecified. There are gates at GR 5391 6974, GR 53774 6983 and GR 5361 7001.

A copy of the Order and Map may be seen free of charge at The One Stop Shop, West Northamptonshire Council, One Angel Square, Angel Street, Northampton, NN1 1ED from 9am to 5pm Monday to Friday inclusive. A copy of the Order may also be found at Daventry Library during its opening hours. If you wish to purchase a copy of the order and map (at a price of £10), please email dfemap.ncc@westnorthamptonshire.gov.uk. A copy of the Order and the Order Map may be downloaded from <https://www.westnorthamptonshire.gov.uk/rights-way-and-searches/public-notices-about-public-path-orders-and-definitive-map-modification>

Any representation or objection relating to the Order must be sent in writing to the Definitive Map Team at West Northamptonshire Council, One Angel Square, Angel Street, Northampton, NN1 1ED or by email to dfemap.ncc@westnorthamptonshire.gov.uk to arrive no later than 22 June 2026, and applicants are requested to state the grounds on which it is made.

If no representations or objections are duly made to the Order, or any part of it, or if any so made are withdrawn, West Northamptonshire Council, instead of submitting the Order to the Secretary of State, may itself confirm the Order. If the Order is submitted to the Secretary of State for the Environment, in whole or in part, any representations and objections which have been duly made and not withdrawn will be sent with it.

Dated 30th April 2026
 Nick Henstock
 Assistant Director (Highways and Transport)

PUBLIC NOTICES

GOODS VEHICLE OPERATOR'S LICENCE

Contract Vehicles Limited of Zenith Farrow House Atlantic Street Altrincham WA14 5TW, is applying for a licence to use Zenith Trailer Rentals Main Road, Clebybrooke, Leamington Spa, Warwickshire, CV34 5AJ as an operating centre for 2 goods vehicles and 10 trailers.

Owners or occupiers of land (including buildings) near the operating centre(s) who believe that their use or enjoyment of that land would be affected, should make written representations to the office of the Traffic Commissioner, Quarry House, Quarry Hill, Leeds, LS2 7UE, stating their reasons, within 21 days of this notice. Representors must at the same time send a copy of their representations to the applicant at the address given at the top of this notice. A Guide to Making Representations is available at www.gov.uk/government/publications/a-guide-to-making-representations-to-the-traffic-commissioner-objections-and-complaints-goods-vehicle-operator-licensing.

PUBLIC NOTICES

Keeping you up to date with all the latest information on Planning Proposals, Traffic Notices, Goods Vehicle Operator Licences, Licences To Sell Alcohol, Probate Notices.....

Classified

TELEPHONE 01527 588688 FACSIMILE 01527 584371

PUBLIC NOTICES

PUBLIC NOTICES

Rugby Borough Council
Town and Country Planning
Act 1990 (as amended)

Application Number R26/0120
RUGBY BARGAIN TYRES LIMITED,
ADJACENT TO A426, LEICESTER ROAD,
RUGBY, CV21 1DJ

Retrospective application for - Building A (Main Workshop): Single storey extensions to North and South elevations, facilitating a new Compression Room, Wheel Alignment Hall, and an expanded Tyre Warehouse. Modernisation of Building A interior, including an updated reception and client waiting area.
 Building B (North): New building for use as workshop and warehouse. Installation of a 2.1m high security fence and gates.
 Proposed Works (Building C) Permission is sought for the addition of Building C, located at the southern-most boundary: Car Wash & Service Station featuring three service bays with roller shutters.
This is a major development

Members of the public may inspect copies of the application, the plans and documents submitted with it online at:
www.planningportal.rugby.gov.uk or in an electronic form at: Town Hall, Evreux Way, Rugby CV21 2RR between the hours of 9.00 am and 5.00 pm Monday to Friday until **23 May 2026**. Please note a planning officer would not be present.

If you wish to make an appointment to discuss the application, please contact the case officer.

Any person who wishes to make representation to the above mentioned Council about the applications should make them online - www.planningportal.rugby.co.uk (search for application number and select comment) - or in writing by that date to Chief Planning Officer, Town Hall, Rugby, CV21 2RR.

If an application is determined by the Planning Committee, members of the public may have the opportunity to speak at the meeting. More details about public speaking are available from the Council or on-line at:
www.rugby.gov.uk/speakingatplanning

For household or minor commercial applications, in the event of an appeal against a refusal of planning permission, dealt with on the basis of representations in writing, any representations made will be sent to the Secretary of State, and there will be no further opportunity to comment at the appeal stage.

Nicola Smith - Strategic Director for Place

PUBLIC NOTICES

Keeping you up to date with all the latest information on
 Planning Proposals, Traffic Notices,
 Goods Vehicle Operator Licences,
 Licences To Sell Alcohol,
 Probate Notices.....

SALES & WANTS

MISCELLANEOUS

BEDS NEW Doubles £95 Singles £59 King size £159. Second hand doubles £49 Singles £29 Fridges £49 Freezers £59 Can deliver 07703 925662

RECLINER CHAIR electric rise & recline £169 Manual recline chair £60 High seated chair £40 Can deliver 07703 925662

7 bags of mixed clothing suitable for cat boot sale £10 each 0121 474 6174

QUALCAST Rotary Lawnmower - good working order £20 07743929558

NESCAFE Dolce Gusto Coffee machine with pods (used) £20 07743929558

SEPAR & Jackson Cordless Lawnmower with 2 battery + charger £95 Cordless Grass Trimmer with battery + charger £55 0776784271

3 draw fridge freezer £55 07355688601

2 draw fridge freezer £50 07355688601

2 built in CD freeview built in TV's £30 each 07355688601

LEATHER swing desk chair £20 07355688601

TV & DVD stand £50 on 01527 833604

S H O P A B I K E, serviced £50 on 01527 833604

GOLF set 2 woods 9 irons putter, bag, trolley £75 on 01527 460742

KIMBARA classical guitar with case foot rest & music stand £80 on 01527 851187

MASTERLOCK fire and water proof safe box with two keys 10lts unused £45 07837727454

MISCELLANEOUS

MASTERLOCK fire and water proof safe box with two keys 10lts unused £45 07837727454

6 Skovby dining chairs tubular metal 'H' frame beige upholstery. £150 on 01527 540006

MAMAS & Papas, large rocking horse on wooden frame. Very good clean condition (collection only) £45.00 Tel: 07934132759

ROLAND Cartier leather shoes with mesh inserts, peep toe, stiletto heel, colour pewter, size 8. Still in box. Worn once indoors. Excellent condition. Original cost was £65.00 Will accept £15.00 Tel: 07934132759

WILLOW tree demdaco "Thank You" plaque by Susan Lordi. In original box. £3.00 Tel: 07934132759

DURABLE travel suit / garment bag with shoulder strap, multiple zip closure pockets, two hangers £3.00 Tel: 07934132759

2 x lamb creep feeders 24 feeding slots £250 and £230 07813 443674

HOBBYCRAFT New clear glass jam jars in original cellophane & cardboard wrapper. £8.00 Buyer Collects. Tel: 07523 431568

SONY Walkman Sports Radio / Cassette WM-F63. Bright Yellow, Water Resistant, great physical condition, stored for years, only stereo radio working well. 07817171680. £90

WOOD & metal garden table & chairs in need of renovation £25 01905 620271

MISCELLANEOUS

STOW M A T I C electric golf trolley brand new battery fitted excellent condition £150 01562 825253

TABLE & 4 chairs 112cm x 72 cm height 74cm 07713769333

COSATTO yellow brown pram, carry cot, rain cover, bag & more-like new! £300 For details & photos call 07936568004

AMELIA by toTs white crib cot 180x80cm sturdy solid wood - excellent condition! Complete with mattress, quilt & pink covers. £185 For details & photos call 07936568004

TWO corded hedge trimmers for sale one 51cm cutter one 46cm cutter, in fair condition. Both with extension leads £15 each. 07518902804 Kidderminster

OYSTER 3 luxury travel pram system 150Fix and all acc (cost over £1000) £150 07449196669

10 unmade kits balsawood & plastic £5 each 0121 707 8399

L A W N M O W E R Rotary Qualcast GWO £20 07743929558

COFFEE machine Nescafe Dolce Gusto £20 07743929558

NEW under counter freezer £90 07799851517

NEW under counter freezer £90 07799851517

WANTED

****WANTED: Vinyl Records CDs Cassettes Vintage or New****
 Seeking classic rock, jazz, indie and rare finds. Cash paid
 Call or text: 07765 142354 Or 01527 893992
 Or email: welston@live.com
 Paul (Albatross & Doomed Records)

MISCELLANEOUS

NEW under counter freezer £90 07799851517

LIGHT oak dining table & chairs £50 on 07799851517

YEW glass / wood corner cabinet £15 07799851517

YEW Welsh dresser £40 on 07799851517

TWO Fish Aquariums 1 small, 1 medium good condition & extras, boxed £30 01527 878187

MASTER lock fire and water proof safe box with two keys 10lts unused £45 07833727454

00 Gauge Bachmann parallel boiler Royal Scot Class loco + tender (ref 31-284) "The Ranger (12th London Regiment)" in BR Green and early emblem, running no 46165. In excellent unused condition, test run only, c / w original box and instructions. £55. Tel 07415322794

00 Gauge Bachmann GWR loco + tender (ref 31-305) in green with late crest "Broome Manor" running no 7805. Very good condition and runner, c / w original box. £25. Tel 07415322794

OVER 20 Hornby train / accessories which need renovating back to life hence price £20 lot 0121 744 7579

HOME IMPROVEMENTS

DOUBLE GLAZING REPAIRS
 Locks, Hinges, Handles, Glass, Windows or Doors
 New Doors/Windows
 Also Supplied/Fitted
 07973 200 623

HANDY MAN
 If you're looking for a fast and reliable service
 Then call Lenny
 • Plastering • Plumbing • Fencing
 • Gardening • Flooring • Kitchens
 • Bathrooms • Carpentry • Flat pack furniture
 • Tiling • Painting
 02476 443 996
 07794 784 266
 NO VAT CHARGE

DRIVEWAYS

CONSERVATORIES & GLAZING

COVENTRY DRIVEWAYS
 • Block paving • Slabs • Porcelain Tiles & Sandstone Kits
 • Fencing • Gravel • Turf & Artificial Grass
 • Decking, Steps and more
 7 Years Warranty on all projects
 Payment only after completion
 02476 274439 07740 101227
www.spanglefish.com/coventrydriveways

LOGS FOR SALE
 Mainly Ash
 £120, £220, £390 loads delivered
 Builders bag of logs £120 delivered
 Card, cash or cheque payments taken
 Tel 07477 778536 or 07983 441818
 See load sizes at our website
www.rbtimber.uk

SERVICES

DRIVEWAYS

COVENTRY DRIVEWAYS
 • Block paving • Slabs • Porcelain Tiles & Sandstone Kits
 • Fencing • Gravel • Turf & Artificial Grass
 • Decking, Steps and more
 7 Years Warranty on all projects
 Payment only after completion
 02476 274439 07740 101227
www.spanglefish.com/coventrydriveways

CONSERVATORIES & GLAZING

DOUBLE GLAZING REPAIRS
 Locks, Hinges, Handles, Glass, Windows or Doors
 New Doors/Windows
 Also Supplied/Fitted
 07973 200 623

HOME IMPROVEMENTS

HANDY MAN
 If you're looking for a fast and reliable service
 Then call Lenny
 • Plastering • Plumbing • Fencing
 • Gardening • Flooring • Kitchens
 • Bathrooms • Carpentry • Flat pack furniture
 • Tiling • Painting
 02476 443 996
 07794 784 266
 NO VAT CHARGE

KITCHENS

S.W INSTALLATIONS
Kitchens & Bathrooms
FREE DESIGN & QUOTATION
QUALITY KITCHENS & BATHROOMS SUPPLIED & FITTED
PLUMBING, CARPENTRY, TILING, WORKTOP & DOOR REPLACEMENT
 (Supply & fit, supply only or fit only)
LOCAL TRADESMAN 20YRS EXPERIENCE
NO JOB TOO SMALL
07971 684 353

LOGS

LOGS FOR SALE
 Mainly Ash
 £120, £220, £390 loads delivered
 Builders bag of logs £120 delivered
 Card, cash or cheque payments taken
 Tel 07477 778536 or 07983 441818
 See load sizes at our website
www.rbtimber.uk

PROBLEM? LOOK NO FURTHER!
 Our Classified pages are full of
 Experts waiting to help!
 Give them a call!

Thousands of Sky Blues fans to line the streets for open-top bus parade through the city

by Aaron Sutcliffe
aaron.sutcliffe@bullivantmedia.com

A CITY-WIDE celebration will take place on Bank Holiday Monday (May 4) to mark Coventry City's return to the Premier League after 25 years away.

The Sky Blues lifted the Championship title last weekend following victory against Wrexham at the Coventry Building Society Arena.

Coventry conclude their season away at Watford this weekend (Saturday, May 2, kick-off 12.30pm).

And following the conclusion of the Championship season, the club will host a 'We Are Back: Live' event for 50,000 supporters.

The event takes place from 1pm to 7pm in War Memorial Park and will feature a bus parade and music festival.

Coventry players and the management team will lead an open-top bus parade through the streets of the city before later joining the celebrations at War Memorial Park.

The parade will begin at the CBS Arena at 1pm, traveling through Holbrooks, Whitmore Park, Keresley, Coundon and Chapelfields, with the parade ending at Hearsall Common.

The players will then arrive at War Memorial park to continue the celebrations.

Meanwhile, the We Are Back: Live event will begin at 1pm and will feature a line-up of local music acts including performances from The Enemy and Tom Grennan.

The event is fully ticketed with last entry at 3pm.

Coventry owner Doug King said: "Days like this are what football is all about - bringing people together to celebrate something truly special.

"This promotion is a huge achievement for everyone connected to the club and the city, and we can't wait to share it with our supporters.

"As a football club with such rich music culture at the heart of our DNA, it has been amazing to work alongside Coventry City Council to ensure that this great music city will have another opportunity to showcase its very best music talent.

"We're proud to give something back to the community and make this a day Coventry will never forget, and we would like to again thank Coventry City Council for all of their support in making this event happen."

Councillor George Duggins, leader of Coventry City Council, added: "Coventry is immensely proud of our football club, and the Sky Blues' return to the Premier League is a moment of huge significance for our city.

"This achievement belongs not only to the team and everyone at the club, but to the supporters and communities who

The Coventry City bus parade route map.



have always stood behind them with such passion. It is a great time to be a Coventry City fan and for the city.

"The celebration events on 4th May will give the whole city the chance to come together and share in this fantastic success. We are back and I look forward to seeing Coventry shine.

"This is such an amazing achievement that I will be recommending that we call an extraordinary general meeting to award the football club in its entirety, the freedom of the city. It would be richly deserved based on the amazing contribution to the city this season."

Bus parade route and timings

After leaving the CBS Arena at 1pm, the parade will formally begin from Holbrook Way after

its junction with Jimmy Hill Way - the road named after the club's last top-flight promotion winning manager.

It will then go right on to Holbrook Lane (around 1.20pm) before then going left on Parkgate Road.

The parade will then travel down Beake Avenue (around 1.45pm), before using Bruce Road to then join Wallace Road (around 2.05pm).

The route will continue along Norman Place Road and then go left on to Hollyfast Road (around 2.20pm) and then Westhill Road.

The buses will then head down Barkers Butts Lane (around 2.30pm), before turning right to join Moseley Avenue.

After crossing Holyhead Road (2.45pm), the parade route will travel Four Pounds Avenue and

Queensland Avenue (just before 3pm).

From there, the public section of the parade reaches its conclusion when it arrives at Hearsall Common (around 3.05pm).

Routes into the city centre such as Jimmy Hill Way, Foleshill Road and Radford Road, are all near to locations early in the route and remain open through the day. The parade route will be subject to closures through the day, alongside parking restrictions. Once the parade has passed safely, roads on the route will be re-opened for public use, allowing fans to travel to the War Memorial Park if they wish.

The club said timings are estimates and will be subject to change on the day.

● See pages 1, 2, 31 and 32 to read about Coventry City's promotion to the Premier League detailing the club's fall and rise since their last top-flight campaign and to read about five key matches from the 2025/26 season.

● See pages 12 and 13 to see pictures from Coventry's title lift against Wrexham last weekend.

● See page 30 for reaction from Sky Blues boss Frank Lampard following the club's promotion as champions.

● Keep up-to-date with all things Coventry City online at: coventryobserver.co.uk/sport

CRS LTD
 Spring Lane South, Malvern WR14 1AT
 ATF's are the **ONLY** legal way to scrap your vehicles
BUYERS
 of all SCRAP Metals and SCRAP Vehicles
 The **ONLY** authorised treatment facility in Malvern!
 Best Prices Paid • Collection & Skip Drops Farm
 Equipment, Copper, Brass etc. • 50 Ton Weigh Bridge
ID REQUIRED - 01684 578081
 www.crs-malvern.co.uk

Observer SPORT



9 772040 128006
 Published by Bullivant Media Group Ltd, Webb House,
 Church Green East, Redditch, Worcestershire, B98 8BP
 Printed by Newsquest, Newspaper House, Osney
 Mead, Oxford, Oxfordshire, OX2 0EJ

VINYL RECORDS WANTED
 Buying since 1978
 Get your cash TODAY!
 I will come to you
Phone PAUL
01527 893992 | 07765 142354

www.rugbyobserver.co.uk BRINGING YOU ALL THE LATEST SPORTS NEWS AND VIEWS FROM THE AREA

Borough do the double over Valley after emphatic derby win

by **Aaron Sutcliffe**
 aaron.sutcliffe@bullivantmedia.com

FOOTBALL: RUGBY Borough completed a historic league double over rivals Rugby Town with an emphatic 4-0 win on the final day of the season. Borough piled more misery on their already-relegated rivals as a late blitz helped the home side romp to victory at Kilsby Lane. After Daniele Reka put the home side ahead, Cameron Collins, Tyrell Waite and Gary Stohrer all found the net to earn Borough the bragging rights. The game marked only the second-ever league meeting between the two clubs after Borough

triumphed 1-0 in the reverse fixture at Butlin Road back in November. With Borough already safe and Valley's relegation confirmed, the game meant little in terms of the Northern Premier League Midlands table. Borough ended the season in 16th place, nine points clear of the relegation zone, with Valley confined to the bottom of the table some 15 points from safety. After Valley's Caine Elliott saw his early shot saved, Borough broke the deadlock on 28 minutes when Reka finished off Stohrer's low cross. The visitors looked to respond as Harrison Nee saw his goal-bound effort blocked while

Charlie Woods denied Stohrer from point-blank range moments before the break. Borough eventually doubled their lead on 73 minutes when Collins turned the ball home after Valley failed to clear their lines at a corner. And the home side all but sealed the points five minutes later as Waite's shot on the turn beat Woods in the Valley net. Borough completed the scoring six minutes from time when Stohrer guided an effort into the bottom corner after Collins smashed an effort against the underside of the crossbar. **The game marked the second ever local league derby between Borough and Valley. Picture by Martin Pulley.**



CASHBROKERS

LEAMINGTON SPA

CASH PAID
**FOR GOLD, SILVER,
 COINS & BULLION**

PAWNBROKING LOANS
 SCRAP GOLD & SILVER
 BUY BACK
 JEWELLERY & WATCHES
 COINS & BULLION

01926 258252
 144 Parade, Leamington Spa, CV32 4AG
 www.cashbrokersleamingtonspa.co.uk





Jun 2020
Sky Blues confirmed League One champions on points-per-game basis

Aug 2021
City return to the, renamed CBS Arena

Jan 2023
Doug King takes over club from SISU

Nov 2024
Frank Lampard replaces popular manager Mark Robins

Apr 2026
Lampard's side seal promotion to the Premier League

Aug 2019
City begin season at St Andrews, Birmingham

May 2023
Defeat to Luton in Championship play-off final at Wembley

May 2025
Defeat to Sunderland in Championship play-off semi-final

the, now-renamed CBS Arena ahead of the 2021/22 season with landlords Wasps entering administration in October 2022 and Mike Ashley's Frasers Group purchasing the stadium in November that year.

SISU's 16-year ownership of the club ended on January 10, 2023, when Doug King completed an 85 per cent takeover of the Sky Blues.

King later purchased the remaining 15 per cent from SISU.

That same season, Coventry reached the Championship play-off final at Wembley only to lose to Luton Town on penalties in a heart-breaking defeat.

King shocked supporters on November 7, 2024, with Robins sacked as Sky Blues boss after more than seven years in charge of the club.

While the appointment of Frank Lampard, on November 28, 2024, was greeted with little fanfare, the former Chelsea and England star transformed Coventry's season.

Lampard guided the Sky Blues from 17th to fifth, only for City to suffer a cruel play-off semi-final defeat against Sunderland in the final minute of extra time.

Lampard's free-scoring Sky Blues picked up where they left off this season, though, with Coventry buying the CBS Arena on August 23, to own the ground for the first time since the stadium was built.

Despite a mid-season dip, Coventry recovered to storm to the title as the club completed a miraculous turnaround to achieve a Premier League return only nine seasons since the dark days of League Two.

Coventry are finally back in the Premier League.

The dismissal of Mark Robins caused consternation among many Sky Blues fans, and his replacement by Frank Lampard (right) underwhelmed many – but what a difference the former England and Chelsea ace has made.

DRIVES4U

Tel: 0800 3032559
Mob: 07773 911552
www.drives4u.co.uk

Are you looking to improve or enlarge your driveway or patio?

We can provide you with a beautiful new patio or driveway in Coventry, Bromsgrove, Redditch, Kidderminster, Solihull and Birmingham

5 Year guarantee

- We've designed and built just about every shape and size of driveway and patio you can imagine, so we will not be phased by your project.
- We strive to achieve 100% satisfaction and unlike other driveway companies, with us you pay absolutely nothing upfront.
- Give us a call and you could save upto £1000

Tel: 0800 3032559 | Mob: 07773 911552 | www.drives4u.co.uk



Five big results that helped shape City's overdue return

by **Aaron Sutcliffe**
aaron.sutcliffe@bullivantmedia.com

Coventry City 7 Queens Park Rangers 1

ONE THE day Coventry confirmed the purchase of their Coventry Building Society Arena home, the Sky Blues put on a show in a seven-goal rout of QPR.

Braces from Haji Wright, Jack Rudoni and Victor Torp, plus a goal from Brandon Thomas-Asante, ensured the Sky Blues began a new era for the club with the most dominant of victories.

The result also sent a statement of intent to the rest of the division

just three games into the campaign, after Frank Lampard's side had just put five past Derby.

Middlesbrough 2 Coventry City 4

Victory at Middlesbrough in November moved the Sky Blues 10 points clear at the top of the table.

An unlikely brace from Liam Kitching and two from Ellis Simms ensured Coventry took command of the promotion race at the expense of then-title hopefuls Boro.

Coventry City 2 Leicester City 1

Coventry came from behind to secure the M69 derby against

Leicester. The Foxes would ultimately suffer a shock relegation to League One.

An early goal from Jordan James put Leicester ahead only for a late strike from Wright to seal the points for the Sky Blues, after Simms had drawn Coventry level.

The January victory halted a three-game winless run, with Coventry's lead at the top of the table now significantly reduced.

Coventry City 3 Middlesbrough 1

A Wright hat-trick inspired Coventry to a vital win against Boro as the Sky Blues completed a significant double over their title rivals.

Wright's treble saw Coventry reclaim top spot in the Championship after Boro had briefly led the way. That victory proved the catalyst for the club's run to the title.

Blackburn Rovers 1 Coventry City 1

Coventry finally clinched promotion with three matches left to play, as Bobby Thomas' late header ended the club's 25-year exile from the Premier League.

Thomas headed in Torp's free-kick six minutes from time at Ewood Park after Ryoya Morishita's deflected strike had threatened to delay Coventry's promotion party.

Thomas wrote his name into

Coventry folklore with a stunning header which sent the more-than-7,000 travelling Sky Blues supporters into delirium.

Coventry had failed to clinch promotion following a drab goalless draw against already-relegated Sheffield Wednesday prior to the draw at Blackburn but that result had all but mathematically made sure of the club's place in the Premier League next season.

Lampard's side then sealed the league title with an emphatic 5-1 victory against Portsmouth and lifted the Championship trophy following a 3-1 home win against play-off hopefuls Wrexham in their penultimate game of the campaign.

G&R SCAFFOLDING

Specialists in Commercial & Industrial Scaffolding Services
Professional scaffolding company with a reputation for excellence

Earning our reputation as one of the leading suppliers of scaffolding solutions in the West Midlands through high quality service, reliable equipment and the latest technology, it's little wonder that we're still going strong after over 30 years.



G&R Scaffolding
Proudly sponsoring Coventry City FC for over 10 years



Visit our website on - www.gandrscaffolding.co.uk
For enquiries – info@gandrscaffolding.co.uk