

WANTED
Motorcycles and Scooters
 Any cc, condition or age,
 good prices paid
 07944 781 933 | 01926 257 643

Friday, May 8th 2026 Week 19

 facebook.com/rugbyobserver

rugbyobserver.co.uk

 @rugbyobserver t: 01926 451900

Your **FREE** edition - just pick one up and keep up with the news

Probe follows discovery of huge illegal waste tip

by **Andy Morris**
 andy.morris@bullivantmedia.com

A 'SICKENING' 30,000-tonne illegal waste dump at a 'precious' protected site near Rugby and Lutterworth has sparked a major investigation to find the culprits.

Officers from Environment Agency (EA) and Natural England discovered household waste had been dumped at the Cave's Inn Pits Site of Special Scientific Interest (SSSI) near Shawell, following reports from the public of a foul odour.

At the site, the agencies believe there is around 30,000 tonnes of shredded waste concealed under soil, causing pollution to the SSSI.

The public are being urged to stay away from the site while the investigation continues.

Alongside the criminal investigation, the EA is assessing the waste to ensure there are no further environmental impacts, as well as monitoring local air and water quality.

Ian Jones, Area Director for the West Midlands at the EA, said: "This is a sickening case of large-scale illegal waste dumping, and we share the public's disgust."

"We have launched an investigation with Natural England to find the criminals and ensure they pay the price for their despicable actions."

"We ask the public to stay away from the area, which is on private land, while we investigate."

Phil Hukin, Principal Manager, Leicestershire and Rutland at Natural England said the site contained some of the best remaining areas of neutral marsh in Leicestershire.

He added: "It is heartbreaking to see one of England's precious sites of special scientific interest damaged like this."

"Our officers are working closely with EA colleagues to investigate this appalling crime."

Over the last year the EA has stopped 743 illegal waste sites, of which 143 were high risk. For the three years up to March 2025, 211 prosecutions have been secured against waste criminals.

The government has recently backed the EA's enforcement budget by an additional £45million over the next three years to crack down on waste crime, which costs the UK over £1billion every year.

The government's new Waste Crime Action Plan includes new measures such as clean-up squads for offenders and police-like powers for EA enforcers.

Anyone with information on the Cave's Inn Pits waste dump is asked to report it to the EA incident hotline on 0800 80 70 60, or anonymously to Crimestoppers on 0800 555 111.



Karen Atkinson, Maria Jondoe Tomeldon and Dorota Wrobel are congratulated by Overslade House General Manager Genoveva Tamasi.

TOP TRIO: THREE dedicated employees at a Rugby care home have been honoured for a combined 55 years of service.

Care Practitioner Maria Jondoe Tomeldon, Housekeeper Karen Atkinson, and Kitchen Assistant Dorota Wrobel, who work at Overslade House, have clocked up the milestone with the care home's operators, Barchester Healthcare.

Maria started at Barchester in 2011 and has been with Overslade House for 15 years, while

Karen has been at the home for 25 years and Dorota Wrobel for 15 years.

The home's General Manager Genoveva Tamasi said: "We're delighted to be celebrating a total of 55 years of loyal service with Maria, Karen and Dorota who have demonstrated their dedication and loyalty to this home and its residents year after year. I speak for all of us here at Overslade House when I say that I'm looking forward to many more years of working with them."

DRIVES4U Tel: 0800 3032559
 Mob: 07773 911552
 www.drives4u.co.uk

Are you looking to improve or enlarge your driveway or patio?

We can provide you with a beautiful new patio or driveway in Coventry, Bromsgrove, Redditch, Solihull, Leamington, Kidderminster and Birmingham

5 Year guarantee

- We've designed and built just about every shape and size of driveway and patio you can imagine, so we will not be phased by your project.
- We strive to achieve 100% satisfaction and unlike other driveway companies, with us you pay absolutely nothing upfront.
- Give us a call and you could save upto £1000



Tel: 0800 3032559 | Mob: 07773 911552 | www.drives4u.co.uk

Championing the needs of Rugby residents since 1991 and delivering the news to you every week

Hospice vow to continue to give care

by **Philippa Mingins**
 philippa.mingins@bullivantmedia.com

THE MYTON Hospices says it remains positive for the year ahead despite a national hospice funding crisis.

The charity has shared its strategic plans for the fiscal year as well as highlighting how the continued generosity of supporters is making a meaningful difference to people living with life-limiting illnesses, plus their families and carers, across Coventry and Warwickshire.

Thanks to ongoing community support, The Myton Hospices has been able to sustain and strengthen its specialist palliative care services despite the backdrop of a national hospice funding crisis which has forced many sites to reduce services and staffing.

Demand for Myton's in-patient beds has increased by 11 per cent in the last year and, across the UK, one third of people with palliative care

needs do not receive the specialist support or pain relief they need.

As the only hospice provider of specialist palliative care in Coventry and Warwickshire – and the only one with in-patient units – Myton is acutely aware of the need for more beds.

While it has 36, the charity can currently only afford to keep 25 open.

This year it will cost more than £15 million for Myton to provide its services free to patients and their loved ones and the charity must generate more than £12million of that through fundraising, donations and community support.

Sarah Faulkner, Myton's chair of trustees, said: "We're pleased to share our plans for 2026/27 with our communities and partners in Coventry and Warwickshire."

"With the support of our donors, staff and volunteers, we will continue to improve and develop our palliative and end-of-life care services with dignity and compassion."

The Myton Hospices rely on community support. s



Ruth Freeman, chief executive at The Myton Hospices, said: "We know how important hospice care is for families in Coventry and Warwickshire and we are committed to being there for everyone who needs us, free of charge. With continued support from our community, we can grow our services and reach more people when they need us most."

The charity's annual priorities include continuing to deliver core hospice services, raising funds to expand hospice bed provision, strengthening community support and ensuring long-term financial and operational sustainability.

Demand continues to grow and, with the support of the community, The Myton Hospices aims to be there for more people when it matters most. There are many ways to support hospices, including making

a donation, taking part in fundraising events, shopping in one of the charity's 25 shops, or volunteering. Visit www.mytonhospice.org/ Support for more details.

■ **CYCLISTS** are being encouraged to set their fundraising wheels in motion for The Myton Hospices. The charity's annual Cycle Challenge takes place from Warwick Myton Hospice on Sunday, August 2, and will feature three distances: 50km, 100km and 100 miles.

Riders will travel through the picturesque villages of Warwickshire and the Cotswolds, all while raising vital funds for the hospice.

Returning by popular demand, for those taking on the 100-mile route, is the Saintbury Hill climb. This timed challenge tests riders both mentally and physically, with one male and one female participant set to be crowned Myton champion.

Riders will be welcomed back to Warwick Myton Hospice where food, refreshments and entertainment will be available.

This year, the charity is aiming to raise £70,000 from the event, which could fund the running costs of Warwick Myton Hospice for two weeks.

Natalie Walker, events and campaigns manager at The Myton Hospices, said: "Our annual Cycle Challenge is always a fun day of cycling, bringing together supporters of all abilities with a little friendly competition along the way."

"It's a great way to support hospice care this summer and every mile ridden helps ensure we can continue providing the care that people across Coventry and Warwickshire so desperately need and deserve."

Visit www.mytonhospice.org/ cycle for more details.

As recommended on Daynurseries.co.uk, please visit to see what our parents say

Quality Care and Education

Providing a fully inclusive service for families with children aged 6 weeks to 5 years from 7.30am to 6.30pm

If you are a working parent you could be eligible for 30 hours a week of free childcare.

At Emscote House the warm and welcoming environment ensures that your child's individual needs are prioritised, and their interests nurtured.

It's time for a peaceful stretch

FREE outdoor yoga sessions are on offer at a Warwickshire country park this spring and summer.

Park yoga sessions are taking place at Ryton Pools Country Park every Sunday, from 9.30am to 10.30am, until mid September.

The instructor-led sessions are inclusive and suitable for all abilities. Everyone is invited, regardless of age, background or experience.

Children are welcome if accompanied by a parent or carer.

The sessions have already generated a positive response locally.

One yoga enthusiast said: "Beginning yoga was life-changing for me. I started practising for fun, thinking that I wouldn't be flexible or calm enough but quickly realised that you don't need to be either."

Mark Ryder, executive director for communities



Park yoga sessions are taking place at Ryton Pools Country Park. s

"Yoga is the piece of the puzzle I didn't know was missing. It supports not only my physical health but my mental health too and I've made connections that will stay with me for life."

Another person said: "Now that the weather is improving, I can't think of anything more enriching than practising yoga in the beautiful local spaces we're so lucky to have in Warwickshire, soaking up the sunshine and listening to the wildlife that surrounds us."

Mark Ryder, executive director for communities

at Warwickshire County Council, said: "These free sessions are a fantastic way for people to enjoy the popular country park in a new way – supporting both physical and mental well-being while spending time outdoors. We hope they encourage even more people to visit, get active and connect with nature."

No booking is required. Participants should bring a yoga mat or towel along with sun cream, water, and a warm layer, if required. Standard car parking charges apply.

Real-time relay for deaf site-users

DEAF residents can now access Warwickshire County Council (WCC) information easier, thanks to a British sign language (BSL) relay service.

The council is working in partnership with Convo, which provides a video relay service that connects BSL users with hearing people via a qualified interpreter.

Using a smartphone, tablet or computer, BSL users can access an interpreter

through the Convo app or website who will then relay the conversation in real time to a WCC staff member. That allows for smoother, more inclusive communication – whether about social care, education, or any other WCC service.

The service is available free of charge to BSL users and can be used to contact any WCC department.

Rob Powell, WCC's execu-

tive director for resources, said: "This partnership marks a significant step forward in making council services more accessible, supporting BSL users to engage with WCC services and access information and support independently and confidently, without needing to rely on friends or family to interpret."

Visit www.warwickshire.gov.uk/social-care/health-services-deaf-people for more information.

T: 01926 425067
 E: emscote.house@childbase.com

Emscote House Day Nursery and Preschool, 46 Warwick Place, Leamington Spa, Warwickshire CV32 5DE

Now taking registrations

We'd love to show you around

PUBLIC NOTICES

For all your latest information on Planning Proposals, Traffic Notices, Goods Vehicle Operator Licences, Licences To Sell Alcohol and Probate Notices...

See page

29



Aidan shows the big boys how it's done on kart track

by **Andy Morris**
andy.morris@bullivantmedia.com

A TALENTED six-year-old racing driver from Rugby borough is on track to emulate his hero Lando Norris after a "staggering" performance at a national go-karting championship.

Aidan Castleman, from Wolvey, defied the odds – against older drivers and teams with bigger budgets – to finish sixth in his first season in the Super One Series, a tournament which shaped the careers of six current Formula One (F1) drivers.

The baby-faced speedster is hoping to move up the grid this year after his family-run team, Castleman Racing, signed a sponsorship deal with Midlands accountancy firm HB&O.

The company's support will help Aidan and his parents Ryan and Amber to meet some of the costs that come with running a team at the highest level of junior motorsport.

Aidan's battery-powered kart, which can reach speeds up to 45mph, costs in the region of £6,000 and equipment such as a race suit, helmet and gloves – plus

the expenses of travelling to races and practice sessions across the country – all add up.

Dad Ryan, a mechanic by trade, said: "Our aim in the Super One Series last year was not to come last so for Aidan to come sixth was staggering and just shows what ability he has."

"Some of Aidan's competitors are spending as much as £150,000 a season, so this support from HB&O means everything and will help to level the playing field a little bit."

Grateful

"We do a lot of travelling in our van, for races and practice sessions. When you factor in the cost of the kart, the parts that need replacing and all of the other equipment Aidan needs, it really adds up so we're incredibly grateful to HB&O for their support."

Aidan got into karting when he was four. His natural talent shone through and it quickly became clear that racing could become more than just a high-octane hobby.

Petrolheads Ryan and Amber are both huge motorsport fans but don't always find it easy watching their son's races.

Amber said: "We obviously enjoy watching Aidan but there are times

when your heart is in your mouth, especially when he's taking bends at 30mph on two wheels."

"There's been the odd bump but, thankfully, no big crashes and certainly no injuries."

"The sport is as safe as it can possibly be and racing electric karts will really help Aidan to hone his craft and better prepare him for racing when he moves up to faster cars."

In addition to the Super One Series, Aidan will also compete in this year's Kart Championship – complete with HB&O branding on his kart.

The company became aware of Aidan's karting prowess through employee Guralp Reyat, a keen motorsports fan.

HB&O managing director Mark Ashfield, himself a motor racing fan, said: "My daughter is a big Lando Norris fan, much like Aidan, and has really got me back into F1 and motorsport."

"We're delighted to be sponsoring Aidan and Castleman Racing at the start of what we all hope will be a hugely successful career in motor racing."

"We can't wait to go and watch him in action."

Aidan Castleman, front, with, from left: Mark Ashfield and Guralp Reyat from HB&O, parents Ryan and Amber Castleman, and sister Lilly. s

OFTEN IMITATED BUT NEVER EQUALLED

While all costs are going up - OURS ARE STAYING DOWN

Due to our customer friendly services of No Door Salesmen, No Showroom and little overheads



NEW FLUSH WINDOWS

BEAUTIFUL COMPOSITE DOORS
Fully fitted
Competitive Prices



UPTO 30% OFF ALL WINDOWS



ALL PRODUCTS HAVE A 10 YEAR INSURANCE BACKED WARRANTY

BILL MOORE'S WINDOWS AND DOORS
A NAME YOU CAN TRUST

1 Brookside Close, Stratford-upon-Avon, Warwickshire CV37 9PL

01789 415171 • 07729 689239 • www.billmooreswindowsanddoors.co.uk

SKY BLUES FANS SAVOUR THE JOY



Around 50,000 people packed into War Memorial Park for a taste of glory. Picture by Dave Archer. s



Coventry City captain Matt Grimes, (front, left) and manager Frank Lampard lead the parade. Pictures by Coventry City Council, unless stated otherwise s

WE are back! A sea of sky blue greeted Coventry City's Championship-winning heroes as the city came together to celebrate the club's return to the Premier League on Bank Holiday Monday, writes *Andy Morris*.

Players and management took to an open-top bus to bring the celebrations into the heart of the community, taking in Holbrooks, Foleshill, Spon End and Earlsdon.

Along the way, fans gathered, celebrated and shared the moment as the parade passed pubs, community centres and streets.

Festivities then moved to War Memorial Park, where 50,000 fans gathered for a We Are Back: Live music festival headlined by The Enemy, Tom Grennan and Panjabi MC.

The celebrations peaked when the promotion-winning players and staff took to the stage to lift the Championship trophy.



Champions! s

GOLF



MEMBERSHIP FEES FROM AS LITTLE AS £15 PER WEEK

Visitors Welcome
Clubhouse & Catering Open to ALL
Meeting room for Hire.
Wakes, Family Celebrations catered for

www.rugbygolfclub.co.uk

01788 542306

Rugby Golf Club, Clifton Road, Rugby, CV21 3RD



Onwards to the Premier League! s



Fans shared the moment as the parade passed into the heart of the community. s



Fans lined the streets to greet their heroes. s



A Sky Blue party! Picture by Dave Archer. s



The party continued as players and staff took to the stage to lift the Championship trophy during a festival headlined by The Enemy. Picture by Dave Archer. s

Say 'yes' to confidence and peace of mind at Lime Tree

Choosing where to live is about more than a home – it's about finding a place designed around the life you want to lead. At Lime Tree, independence is a priority, everything you need is within reach, and support is always there without getting in your way.

And now, thanks to our FlexiRent option, you don't have to wait. Move in and start enjoying everything Lime Tree has to offer – rent while you sell your home, then buy when you're ready. Or simply keep renting. The choice is entirely yours.

Want to find out more? Join us for a **Discovery Day on Wednesday 13th May** and see how you can retire *differently*. Call or visit the website to book your place.

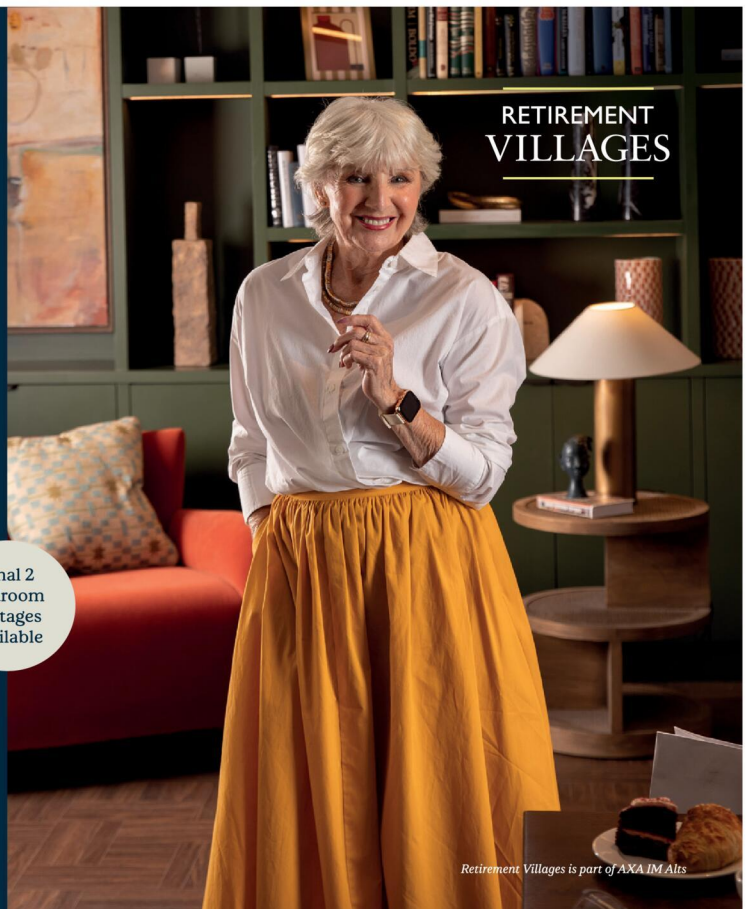


01788 462 214
limetreevillage.co.uk

Dunchurch, Warwickshire

Final 2 bedroom cottages available

RETIREMENT VILLAGES



Retirement Villages is part of AXA IM Alts



ABOVE: Volunteers from Pailton Parish Council, Pailton Village CIC and community members during a clear-up of the White Lion site. RIGHT: An artist's impression of how the completed hub will look.

Raising a glass to project's progress

RAISING CASH: A BELOVED youth club which has been working with young people in Rugby for 107 years is aiming to raise vital funds at two upcoming events.

The Bradby Club will host a Music Bingo Night at the Bear Pub in Bilton on Friday (May 8), starting at 7.45pm. Bingo cards will cost £10 for four games. There will also be a cash-only raffle. Visit <https://bearpub-rugby.co.uk/book-your-table> or email Rebecca on events@bradby.org.uk to book a table.

On Friday June 5, the club will hold its annual Rugby School Head Master's Garden Party at Rokeby House in Barby Road. Visit www.try-bookings.com/uk/104221 for tickets.

A 'PROUD and emotional' community near Rugby is a step closer to restoring a beloved village landmark which has been closed for more than a decade.

Pailton residents hope to restore the dilapidated White Lion – a Grade II-listed building which closed in 2014 – and turn it into a community hub, including a village shop, community gardens, an art exhibition centre, a cycle shed and a working brewhouse.

Pailton Parish Council bought the 18th century former pub in 2019, and last year was awarded more than £2million by The National Lottery Heritage Fund towards the project, which is

backed by a network of local residents, businesses and community groups.

With planning permission now approved, organisers are now making a final push for funds – and are 'closer than ever' to breaking ground and beginning works on the project.

A spokesperson for Pailton Village Community Interest Company (CIC), which is running the project, said: "This is an incredibly proud and emotional moment.

"After years of campaigning – from Pailton Parish Council, the Village Hall Committee, and so many generous individuals – we are now on the brink of making

this vision a reality."

Villagers gathered at a recent event at Pailton Village Hall to share memories about the former pub and explore local history.

The spokesperson said: "At the heart of the afternoon was a Memory Sharing Hub, where historic photographs and artefacts sparked conversations and reflections.

"Residents contributed their own stories and snapshots, revealing just how deeply the White Lion is woven into the fabric of Pailton's identity – not just as a building, but as a place of shared experience, ancestry and belonging.

"That community memory and legacy remain central to village

life today.

"As the White Lion moves into its next chapter, it is set not only to restore a 300-year-old inn, but to become a custodian of these memories – and potentially even an informal archive of village life, where heritage is preserved, shared and built upon for generations to come."

The CIC has launched a crowdfunding campaign to raise £50,000 which will bring the project 'within touching distance' of construction. Visit www.crowdfunder.co.uk/p/white-lion-pailton to donate.

A new website is sharing updates and announcements about the project. Visit <https://whitelionpailton.com> for more information.

MAX
M&BILITY
CENTRE

**SPECIAL OPENING
VOUCHER DEALS**

NEW STORE NOW OPEN IN THE ROYAL PRIORS SHOPPING CENTRE LEAMINGTON SPA

<p>4mph Boot Scooter</p> <p>Up to 8 miles range Easily Transportable</p> <p>OPENING DEAL £599.99</p>	<p>Four Wheel Walker</p> <p>Folding Rollator Padded Seat</p> <p>OPENING DEAL £79.99</p>	<p>Riser Recliner Chair</p> <p>OPENING DEAL £499.99</p>	<p>Light Weight Wheel Chair</p> <p>OPENING DEAL £159.99</p>	<p>Hurricane Walking Stick</p> <p>ONLY ONE PER CUSTOMER</p> <p>OPENING DEAL £9.99</p>
--	---	---	---	---

Wheelchairs from £129.99 • Motorised Bath Lifts from £279.99 • Commodes from £59.99 • 3 Wheel Walkers from £69.99

**CALL TO
BOOK YOUR
SCOOTER
SERVICE**

07869 961147

Max Mobility Ltd, 8 Lower Mall,
Royal Priors Shopping Centre, Cv32 4XU
www.maxmobilityltd.co.uk
Pictures for illustration • Prices with VAT Exemption

MP welcomes new rules on rented sector

MP MATT Western has welcomed the new Renters Rights Act which means landlords can now only evict tenants with a valid and legal reason.

The new rules, which came into effect on May 1, include sweeping changes to renting which the MP for Warwick and Leamington says are a 'game changer' for renters.

Mr Western said: "Back in 2020, a 76 year-old constituent approached me as she had received a section 21 notice evicting her from her property. She had lived there for 13 years and always paid her rent on time. This was in the height of Covid.

"Section 21 notices allowed that to happen. I am relieved for many residents, like this example, that this will be so much less likely to happen now. Banning 'section 21s' is the right thing to do and I am glad we are doing it."

Other changes include all tenancies will now be rolling with no fixed end date and tenants being able to leave at any time by giving two months' notice. Previously, tenants would have to wait until the end of the fixed term to leave the property or pay a fee.

There are significant changes to the financial side too with landlords only allowed to increase rent once a year and bidding wars being banned. Landlords will not be able to accept rent above the advertised price and will only be able to ask for a maximum of one month's rent upfront.

Mr Western added: "These changes are a game changer for renters and will empower renters by providing them with greater security, rights and protections.

"Over my years as an MP, I have seen too many cases where renters are getting a bad deal and not having the security they deserve. The Renters' Right Act changes that and rightly so.

"I know many landlords will have been fair and decent with their tenants and these changes won't significantly alter the way they rent their property. These changes are to tackle those who aren't abiding by expected standards and are giving their tenants a poor deal and standards."

Visit www.gov.uk/government/publications/guide-to-the-renters-rights-act/guide-to-the-renters-rights-act for more details.



Some of the team from sponsors Blythe Liggins Solicitors after taking part in last year's Two Castles Run.

Packed field set to go the distance in charity challenge

THE EVER-POPULAR Two Castles Run is fully booked for the third year in a row.

This year's run will take place on Sunday June 14 when around 5,000 runners will set off from Warwick Castle on a 10km route through the countryside to the finish line at Kenilworth Castle.

Organisers from the Kenilworth Runners have been working to open the run up to more participants, offering an increased number of places this year, and will also be making changes to help supporters who turn out to cheer on the runners at the castles.

Richard Clarke, race director from Kenilworth Runners, said: "People often tell us that the Two Castles Run is their favourite race of the year, so it's great to be able to offer more places to runners for this year's event.

"We are expecting around 5,000 runners and we're also working hard on changes to

the visitor experience for spectators.

"This year we will be providing buses so that spectators can travel between the two castles to cheer on their friends and family, offering a convenient transport option and meaning they can easily move along the route without having to use their own cars."

The Two Castles Run helps to raise money for various good causes - runners can collect sponsorship for a charity of their choice and are invited to contribute to The Myton Hospices when they sign up to the race. Around 50 runners from The Myton Hospices will also run the race, raising vital funds through sponsorship.

The run will again be sponsored by Leamington-based Blythe Liggins Solicitors which has pledged to sponsor the event for another five years.

Visit www.twocastlesrun.org.uk to join the waiting list for this year's run.

Spring Arrives

at the garden lover's garden centre

Harefurlong Nurseries
www.farnboroughgardencentre.co.uk

A traditional garden centre that focuses on providing quality plants, garden products, homeware and gifts

national
Garden Gift
voucher

AQUATIC
PLANTS

TUB & BASKET
PLANTS

VEGETABLE
PLANTS

SUMMER
BEDDING

Treasured
Teddies
AT
FARNBOROUGH GARDEN CENTRE

Come & visit our Treasured Teddies shop & see our massive selection of cuddly collectables & furry friends including especially loveable limited editions and everyday huggables

A world of *Choice*

OPEN 6 DAYS A WEEK
Tues-Sat 9-5.30pm
Sun 10.30-4.30pm
Open Bank Holiday Mondays

On A423 Southam Road,
Nr Farnborough, Banbury, OX17 1EL
Tel 01295 690479

customersales@farnboroughgardencentre.co.uk

**WHERE THINGS FOR YOUR GARDEN
WON'T COST YOU THE EARTH**

Bid for some creative cash

GRANTS of up to £5,000 are on offer to organisations and freelance creative practitioners in Coventry – but time is running out to apply for them.

Coventry City Council has launched Made In Cov, a new grants programme offering awards of £2,000 to £5,000 to supports arts and creative activity that benefits Coventry residents.

The scheme aims to bring more arts and creative opportunities to people across the city, particularly in areas where they are scarce.

Funding can support workshops, participatory projects, small festivals, events, exhibitions, showcases, creative trails and digital arts projects.

The main aim is to bring together local artists, creatives, residents and community groups, ensuring people feel welcome, included and able to participate.

While applications are welcome from all parts of Coventry, priority will be given to activity taking place in Wyken Croft, Stoke Heath, Clifford Park, Little Heath, Henley Green, Wood End, Bell Green, Willenhall and Foleshill West.

Projects in other areas must demonstrate how they benefit local communities, particularly people experiencing disadvantage.

Applications close at midday on Monday.

Visit www.coventry.gov.uk/madeincovgrants for more information and to apply.



Sanctuary status secured

by **Andy Morris**
andy.morris@bullivantmedia.com

‘A PLACE where everyone belongs’ – a Coventry school has been awarded ‘school of sanctuary’ status in recognition of its work to support students from refugee and asylum-seeking backgrounds.

West Coventry Academy, in Tile Hill, received the award after an assessment with the school praised for its ‘excellent and comprehensive’ approach and commitment to inclusion.

The report identified the academy

as an example of strong practice and recommended it continue to support and inspire other schools working toward the accreditation.

The school’s personalised approach to welcoming new arrivals was also praised, including tailored support and dedicated English as an additional language (EAL) provision, to help young people thrive. Students spoke positively about their experience with some saying the school felt like “home”.

The accreditation – granted by the City of Sanctuary UK network, a national movement of organisations that supports refugees and people seeking asylum – was secured

through initiatives like the school’s ‘voices for equality’ group, which leads assemblies and contributes to wider discussions about inclusion.

Events such as culture day and refugee week help students develop an understanding of global issues and the school also works with organisations including Coventry Ethnic Minority Achievement Service (EMAS) and the Bell Foundation, to support such work.

Inspectors also highlighted the role of staff training in building understanding of the experiences of people seeking sanctuary. That includes whole-school professional development and opportunities for

students to share their own experiences directly with staff.

Headteacher Anastasia Neofitou said: “We are incredibly proud to have been recognised as a school of sanctuary. This award means so much to us as a school community, as it reflects the values we live every day. We are committed to ensuring that every student feels safe, welcomed and able to succeed, regardless of their background or circumstances.”

“Our students play a vital role in shaping this culture. Their leadership and willingness to share their experiences help make our school a place where everyone belongs.”

THE JONES FAMILY JEWELLERS

IN-HOUSE
JEWELLERY
REPAIRS

FINE
JEWELLERY
EXPERTS

CASH FOR
GOLD & SILVER

WATCH
BATTERIES
& RESEALS

WATCH
STRAPS & PEARL
RESTRINGING

SATCHWELL WALK,
LEAMINGTON SPA
01926 882552

TALISMAN SQUARE,
KENILWORTH
01926 954271

ROYAL PRIORS,
LEAMINGTON SPA
01926 893393

WWW.TJFJEWELLERS.CO.UK



FOR APPOINTMENTS EMAIL: ENQUIRIES@TJFJEWELLERS.CO.UK

PROFESSIONAL
JEWELLER
— Awards 2025 —
RETAIL TEAM
WINNERS 2025

THE BED FACTORY

SPECIALISTS IN BEDS AND MATTRESSES FOR PEOPLE WITH BACK, SHOULDER OR HIP PAIN.

SALE NOW ON

<p>The Harrison Handmade Beds</p>  <p>KING FOR DOUBLE on all complete beds from Harrison.</p> <p>Complete Range of Harrison FR Chemical Free Beds on Show</p>	<p>Special Price Ottoman</p>  <p>FREE HEADBOARD</p> <p>Single £449 • Double £499 King £599 • Super King £699</p>	<p>Eppy Wood Frame</p>  <p>3'0 £399 • 4'6 £499 5'0 £549 • 6'0 £599</p>	<p>1 WEEK DELIVERY ON ELECTRIC BEDS</p>  <p>FREE AT HOME SELECTION AVAILABLE</p> <p>5 POINT MASSAGE MATTRESS NOW AVAILABLE TO TRY IN STORE.</p> <p>We are specialists in electric adjustable beds and have A Large Selection Available Starting From £999</p>																
<p>Avon Fire Side Chair</p>  <p>£699.00</p>	<p>Special Edition 2 Drawer Bed Set</p>  <p>FREE HEADBOARD</p> <p>3'0 was £539 now £479 5'0 was £769 now £679 4'6 was £639 now £579 6'0 was £899 now £799</p>	<p>Bedroom Furniture</p>  <p>Full Range of Bedroom Furniture Available</p>	<p>Celebrity studio in store</p> 																
 <p>Mammoth Ultimate Health Mattress</p> <p>2 X FREE PILLOWS WITH ANY DOUBLE, KING OR SUPERKING MAMMOTH MATTRESS</p> <p>Helps reduce back, shoulder and hip pain</p>	<table border="1"> <tr> <td>Mattresses</td> <td>Support Chairs</td> <td>Beds</td> <td>Sofas</td> </tr> <tr> <td>Riser Recliners</td> <td>Electric Adjustable Beds</td> <td>Corner Sofas</td> <td>Headboards</td> </tr> <tr> <td>Chests</td> <td>Wardrobes</td> <td>Pictures</td> <td>Mattress Toppers</td> </tr> <tr> <td>Lamps</td> <td>Pillows</td> <td>Duvets</td> <td>Z Beds</td> </tr> </table>			Mattresses	Support Chairs	Beds	Sofas	Riser Recliners	Electric Adjustable Beds	Corner Sofas	Headboards	Chests	Wardrobes	Pictures	Mattress Toppers	Lamps	Pillows	Duvets	Z Beds
Mattresses	Support Chairs	Beds	Sofas																
Riser Recliners	Electric Adjustable Beds	Corner Sofas	Headboards																
Chests	Wardrobes	Pictures	Mattress Toppers																
Lamps	Pillows	Duvets	Z Beds																

Leamington's Largest Independent Bed Retailer

We can supply a large range of beds in 1 to 2 weeks - 3' Single Beds also available - WE SUPPLY WHEN OTHERS FAIL

139 Regent Street, Royal Leamington Spa, CV32 4NX

01926 422404

sales@thebedfactory.co.uk
and www.thebedfactory.co.uk

★ Trustpilot ★★★★★

'Get your youth opportunities here! You won't find cheaper anywhere else...'

Rugby's first Teenage Market has been hailed a success. s

by **Andy Morris**
andy.morris@bullivantmedia.com

RUGBY'S first Teenage Market has been hailed a success – and young entrepreneurs are being encouraged to get involved.

Traders aged 10 to 17 built their confidence and business skills by putting their handmade crafts, art, fashion, food and small business ideas up for sale at the teenage market.

The young traders collectively sold more than 600 products, making a total profit of over £1,800 in the process.

The market, held as part of Rugby Borough Council's Easter Market celebrations, helped to

attract strong footfall across the weekend and generated positive feedback from traders, shoppers and local businesses.

It was the second teenage market funded by Warwickshire County Council (WCC), which wants to help young people develop their entrepreneurial, employability and social skills.

Stallholder Layla Marsh, from Rugby, said: "The event was so chill and everyone was so friendly. Please do one again soon!"

A parent of fellow Rugby stallholder Jacob Walsgrove said: "The event really helped Jacob with his confidence, by being able to speak to people about what he loves. It was also really good for the town – it helped bring more people in and created a great atmosphere."

Another stallholder, Ava

Breadmore, from Coventry, said: "I thought it was an incredible idea.

"All of the staff were so kind and supportive but still treated us like adults and helped us to make the most of the event.

"I also think there was amazing communication before and during the event from the organisers about the plans and everything we needed to do, which made the whole thing so much easier."

Tom Kittendorf, assistant director for leisure and wellbeing at Rugby Borough Council, said everyone at the authority had been impressed with the markets.

He said: "They've enabled us to create opportunities and meaningful connections for an age group that can often be difficult to engage with through traditional

town centre events. The energy, creativity and professionalism shown by the young traders has been fantastic and the positive impact on the town centre was clear to see."

WCC aims to make the teenage market model accessible to any town or place in the county.

Joe Barratt, executive director of the Place for Youth community interest company, said: "The number of applications to become traders at Warwickshire's teenage markets has been very high and we've received lots of enquiries around future events so there is a real, demonstrable demand and appetite from the young people of Warwickshire to engage with towns and villages in this way."

Mark Ryder, executive director for communities at WCC, said:

"We are delighted to see towns across Warwickshire continuing to embrace teenage markets as a way of creating connection, skills and opportunities for our young people.

"Events like this demonstrate the value of investing in youth-led activity that benefits individuals, communities and town centres alike."

The teenage markets programme will continue to roll out across Warwickshire throughout the year.

Contact Joe Barratt, at j.barratt@placeforyouth.org, or email towns@warwickshire.gov.uk for more information on hosting an event.

Visit <https://theteenagemarket.co.uk/sign-up> to register as a teenage market trader.



Tel: 0800 3032559

Mob: 07773 911552

www.drives4u.co.uk

Are you looking to improve or enlarge your driveway or patio?

We can provide you with a beautiful new patio or driveway in Coventry, Bromsgrove, Redditch, Kidderminster, Solihull and Birmingham

5 Year guarantee

- We've designed and built just about every shape and size of driveway and patio you can imagine, so we will not be phased by your project.
- We strive to achieve 100% satisfaction and unlike other driveway companies, with us you pay absolutely nothing upfront.
- Give us a call and you could save upto £1000



Tel: 0800 3032559 | Mob: 07773 911552 | www.drives4u.co.uk

Organisers are trying to find an alternative location for the Ibiza-on-Stour event. s



Ibiza gig cast adrift

by Philippa Mingins
 philippa.mingins@bullivantmedia.com

“PEDANTIC” councillors have pulled the plug on a popular South Warwickshire music event.

Stratford District Council (SDC) has refused a licence for Shipston Proms’ Ibiza-on-Stour event, which was set to take place on the field at The Hub during the proms music festival, which will run from June 16 to July 4.

Members of SDC’s licensing panel said the venue for the event, which attracts more than 1,000 partygoers and is backed by MP Manuela Perteghella, is too near residential properties.

The Proms committee and Shipston residents have criticised

the decision.

Proms spokesperson Josie Kemp said: “It values process over community. This rigid adherence to guidelines is pedantic in the extreme and fails to take into account the bigger picture. In 2025, there was one complaint and 1,125 delighted concert goers.

“The closest properties are on a development where the residents’ association carries out an annual survey and not a single complaint has ever been received.

“The Proms committee feel that this decision is a sledgehammer to crack a very small nut. Also, there is no consistency here. The Last Night of the Proms is a brilliant, bigger event that takes place in the town square, where people live, and yet that’s been deemed acceptable for 27 years and will be going

ahead again this year.

Josie added: “The people of Shipston have lost something valuable. The Shipston economy has been damaged as The Hub and other contractors will lose business. Local DJ’s caterers, event managers, security and bar suppliers, local pubs, restaurants and retail outlets will lose business.”

The Proms committee is searching for an alternative location.

An SDC spokesperson said the event had previously taken place without the appropriate licence and, to address this, an application had been submitted this year to regularise the event under the Licensing Act 2003. They added complaints had been received in 2024 regarding dispersal of attendees, and in 2025 relating to noise, dispersal and inadequate parking.

Beer festival returns

PINTS of fun is promised in Warwick at the St John’s House Beer and Cider Fayre.

The event is returning for a second year on Saturday, May 16, from noon until 7pm. Visitors can enjoy an afternoon of local flavours and live entertainment in the house and gardens of the 17th century St John’s House.

The fayre will celebrate the best of Warwickshire brewers and distillers alongside gins and cocktails, street food, coffee and local ice cream.

Confirmed traders include the Warwickshire Gin Company, the Windmill Hill Brewing Company, Brubl Brewery, Dough & Brew, The Shakespeare Pit Roast Company, the Annie’s Antics Vintage Ice Cream Van and the Coffee Cup Cabin.

There will also be family fun plus live entertainment for all ages, including children’s crafts; vintage lawn games; live music from local artists

Vince, Kirsty and Ryan; and Jack Hopkinson; and free guided tours.

Mark Ryder, executive director for communities at Warwickshire County Council, said: “The event is a fantastic example of our vibrant county, bringing families and friends together in the beautiful, historic setting of St John’s House while championing the incredible craftsmanship of Warwickshire’s local brewers, distillers and food producers.

“Supporting our local independent businesses is a key priority for the council and events like this are the perfect way to showcase the exceptional food and drink produced right here in Warwickshire. We hope visitors will enjoy the event and remember to drink responsibly.”

Visit www.warwickshire.gov.uk/heritageboxoffice for more details and for tickets.



The St John’s House Beer and Cider Fayre is returning after its success last year. s



Come along to our Open Day

Come see

a home designed with you in mind

Our Harvard Place development in Stratford-Upon-Avon is cleverly designed to make life easier – now and in years to come.

Join us for our open day at Harvard Place. It’s a great opportunity to visit this stunning Retirement Living PLUS development, view our high quality apartments available, and meet our vibrant community of homeowners.

Visits are by appointment only and we look forward to welcoming you.

Join us for coffee & cake

Date: Wednesday 20th May 2026
 Time: 10:30am - 2:30pm

Call 0800 185 5674 to book your space.

mccarthystone.co.uk/harvard-place

★ Trustpilot ★★★★★ Rated Excellent

*Terms and conditions apply. *Additional charges apply. Subject to availability, while stocks last. Visit www.mccarthystone.co.uk/harvard-place for full details. Properties available to purchase via McCarthy Stone Resales - privately owned. Imagery is representative and facilities vary by location.

Harvard Place
 Springfield Close, Stratford-Upon-Avon,
 Warwickshire, CV37 8GA



Here’s some of what the over 70s can enjoy:

- ▶ Local amenities nearby
- ▶ Dedicated Estates Manager
- ▶ Beautiful communal lounge
- ▶ Stunning landscaped gardens
- ▶ Staff on-site 24/7
- ▶ Flexible care & support*
- ▶ On-site chef-run restaurant

Properties available to buy from **£190,000*** or rent from **£2,845pcm***

McCarthy Stone
 Retirement living your way



Two-wheeled treats

THE BIGGEST annual event staged in Rugby town centre is raring to go later this month.

The Rugby Bikefest will see hundreds of bikes roar into the town centre on Sunday May 17.

The free, family-friendly event, organised by Rugby Borough Council in collaboration with local motorcycling groups, will start with the now traditional ride-in, when hundreds of motorbikes will roar into the town centre.

There will be a range of bike displays to enjoy, featuring brands including Harley Davidson, Ducati, Yamaha, Triumph and many more.

There will also be food stalls, live music and a funfair to keep family and friends entertained for

the day.

Tom Kittendorf, Rugby Borough Council's Assistant Director for Leisure and Wellbeing, said: "Rugby Bikefest is one of the most popular events in the town centre calendar."

"Drawing thousands of visitors from near and far, it generates a vibrant atmosphere and colourful spectacle in the town, providing a significant boost in footfall and revenue to local businesses on the day."

The event takes place around the town centre from 10.30am to 4pm on Sunday May 17.

Visit therugbytown.co.uk/rugby-bikefest for more information, or to register for the ride-in.

Serenading Spring to the tune of £12k

THOUSANDS of Rugbeians helped to raise £12,000 for local good causes at the Rugby Spring Fair.

Around 4,000 came along to Whitehall Recreation Ground on Bank Holiday Monday for the annual event, which has now been running for more than 40 years.

The fair was formally opened by Mayor Barabra Brown, accompanied by the Presidents of the three Rotary Clubs in Rugby, The Rugby Round Table, 41 Club and the Rugby Heritage Lions, and district representatives of the organisations.

There were queues all day long to see the attractions in the Kidz Zone – including Wally the Clown, face painting, a creepy-crawlies handling area, and a bouncy castle.

The main stage gave local musical talent the chance to shine, including Amie Boyd, The Scutters, The Voice and Drama Academy, Lee and Dunk, Charlotte Traynor, and Schedryk – a group of singers from Rugby's Ukrainian Community.

The PTI arena hosted performances and displays by Impact Dance, G-Force Martial Arts, and the Crew Girls from Coventry.

The Bilton Silver Band played in the park's newly refurbished bandstand.

Among the many stalls were a number of local charities who had the opportunity to raise their profile – and much needed funds.

Novel fundraisers were the 29th



Local acts showcased their talents on the main stage.

Air Cadets squadron who built a flight simulator to help raise funds for a new minibus, and Hillmorton Juniors' penalty challenge to raise money for their club.

Event manager Simon Maguire said: "Thanks to our sponsors Vets for Pets, Wates Construction, Bloor Homes, David Wilson Homes,

Custom Heat, the Draycote Hotel and many advertisers, we were able to provide lots more free attractions for the visitors to the fair than we did last year, and we have raised £12,000 for local charities.

"We are delighted to have received lots of positive feedback from the community."

Questions about care? We can help

We know moving into residential care is an emotional and difficult decision with lots to think about.

With over 30 years' experience, we can help you navigate the process of finding the right care home, so that you feel confident about the decision you make – whether that's choosing a WCS Care home, or one outside our group that's more suited to your needs.

If you've got questions about care, or one of our care homes, our Trusted Advisors can help.



Philip Rainsford



Drovers House, Rugby

☎ 07802 728447

✉ p.rainsford@wcs-care.co.uk



Westlands, Rugby
Dewar Close, Rugby

☎ 07802 728443

✉ j.rugg@wcs-care.co.uk



Josephine Rugg



Help is at hand amid the cost-of-living crisis. s

Struggling folk can find some breathing space

by **Andy Morris**
andy.morris@bullivantmedia.com

HUNDREDS of Rugbeians sought help with unmanageable debts last year – with experts warning even more people will need help this year as the cost of living rises further and the impact of global events hits bills.

Government figures have revealed that 198 people who were in debt in Rugby entered the

'breathing space' scheme in 2025.

Also known as the debt respite scheme, breathing space gives people struggling with debt legal protections including a pause on creditor action and no interest or charges for up to 60 days – to offer them time to get advice and come up with a plan.

Some 793 people in Rugby have used the scheme since its launch, in 2021.

As separate figures from the Money and Pensions Service revealed 15 per cent of people in the town are in need of debt

advice, National Debtline is urging anyone worried about their finances to contact them for free advice.

Jack Sporcic, a debt adviser from National Debtline, said: "Behind every breathing space application is someone trying to cope. We're hearing from people who have never struggled with their finances before but rising costs have pushed them into difficulty."

"Breathing space gives people time and protection and our advisers can help people understand if it is right for them. Everyone's

situation is different and even if people aren't eligible for this specific scheme, our advisers will help them find the best option."

Four out of five callers to National Debtline were able to reduce or stabilise their debt, and three in four reported a positive impact on emotional and mental wellbeing, the service says.

Jack added: "No one should be worrying about debt alone. We urge anyone in Rugby worried about their finances to contact National Debtline as early as possible."

Threat level on the rise

POLICE in Warwickshire have released a statement in response to the raising of the terror threat level in the UK to 'severe'.

Warwickshire Police deputy chief constable Ben Smith said: "You will have seen in the news that the UK terrorism threat level has been increased from substantial to severe – meaning an attack in the UK is highly likely."

"This change comes following a series of recent incidents targeting Jewish communities in London and our thoughts very much remain with all those impacted by these horrific attacks."

"The raise in threat level will no doubt be a cause of significant concern. I therefore wanted to give some information and reassurance about what this means for us all here in Warwickshire."

"The change in the threat status is in response to those recent events and is a precautionary measure, not based on any specific threat. But we do all need to be vigilant."

"Warwickshire Police will continue to be visible in our communities, and will be working with partner agencies, local businesses, and faith groups to share information and advice on security, what to be on the look-out for and how to report any concerns."

"Communities defeat terrorism, and we are asking you, the public, to remain vigilant. Your support is essential, and communities continue to show they stand together against anyone who tries to divide them."

Report any suspicions to www.gov.uk/ACT. In an emergency, call 999.



OUR BIG SALE IS STILL ON

OPEN 7 DAYS CV6 5EY

INFLATION EVERYWHERE - BUT NOT AT CARPET MILL!

Everything is going up in price, the same for Carpets and this is why it pays to go to Carpet Mill. Manufacturers of yarn and other materials for making carpets have all had price rises and some manufacturers are busy changing their specifications to many ranges to compensate. They also get surplus rolls that they cannot sell to the big stores as they don't have enough stock left to service them.

Therefore, we are buying those rolls at a FAT DISCOUNT and passing it on to YOU.






Everything Reduced BE QUICK

BRAND NAME CARPETS AT LOW LOW PRICES

From quality Axminster to budget cord

We are recommended for our low prices, quality service and extensive range throughout the Midlands. There are no R.R. prices on carpets, so if others give 50% offers or sales discounts, is it 50% off their normal high prices. ALWAYS compare with Carpet Mills normal prices!!!!!!

CARPET MILL

CROMWELL STREET (OFF RED LANE) COVENTRY CV6 5EY TEL: (024) 7666 1985

SOME CUSTOMERS TRAVEL MILES - YOU DON'T HAVE TO - WE ARE HERE

www.salecarpet.uk



Remembering Tyndale's work

THE LEGACY of the man who first translated the Bible into everyday English will be celebrated at an event in Rugby this weekend.

Rugby Christadelphians will host a public presentation to mark the anniversary of William Tyndale's *English New Testament*, a translation which, 500 years ago, laid the foundation for the *Bible* as we know it in English.

A Rugby Christadelphians spokesperson said: "Tyndale's vision was radical for its time: He believed that even a 'ploughboy' should be able to read and understand scripture.

"His work came at great personal cost. Facing fierce opposition from religious authorities, Tyndale was forced into exile and ultimately paid with his life.

"Yet his words lived on, shaping not only later *Bible* translations but also the English language itself."

The presentation will bring the story to life, examining the risks Tyndale took, the impact of his work on society and the relevance of the *Bible's* message in the modern world.

The spokesperson added: "With ongoing conversations around the world about access to information, freedom of expression and the role of faith in public life, Tyndale's story feels as relevant now as ever.

"The event is open to all and aims to appeal both to those with a religious interest and anyone curious about the historical roots of one of the most influential books in the English-speaking world."

The presentation takes place at the Christadelphian Hall in Oliver Street at 3pm tomorrow (Saturday). Admission is free.



Award winners on stage at the Belgrade Theatre. s

by **Andy Morris**
andy.morris@bullivantmedia.com

INSPIRATIONAL businesses, community groups and people in Coventry and Warwickshire have been crowned champions at a celebration event for the region.

Honours celebrating the region's trade and community achievements were handed out at the Coventry & Warwickshire Business and Community Awards, presented by Coventry and Warwickshire Chamber of Commerce at the Belgrade Theatre.

More than 600 people – including businesspeople, dignitaries

and civic leaders – attended as 60 businesses, community groups and individuals were shortlisted for awards.

The Millboard Company, in Coventry, landed The Global Player award and the Inspire Education Trust won The Equality Trailblazer prize.

The People First award was won by the Belgrade Theatre Coventry, with accountancy firm Spencer Gardner Dickins highly commended.

Coventry University Group was named winner of The Planet Saver award and Emergency Vehicle Products landed The Problem Solver prize.

The Herd landed The Rapid Riser award with HeliosX receiving a high commendation.

The Muscular Dystrophy Support Centre was named Not-For-Profit Champion with the Bardsley Youth Project highly commended.

The Community Champion award was won by MES Systems and Avon Studios was highly commended. Chitralakaimanram landed The Creative and Culture Activator award.

In the individual categories, Tom Bromwich, of Bromwich Hardy, was named Businessperson of the Year and Lorraine Bryan-Arnold, of the RSPCA Coventry & District branch, won Community Leader of the Year.

Chamber chief executive Corin Crane said: "From micro businesses to some of the biggest employers in the region, the awards highlighted the diversity

of the Coventry and Warwickshire economy and the fantastic people and organisations who make this place tick.

"The Business and Community Awards give us a chance to shine a light on so much that is great about Coventry and Warwickshire and, beyond the awards, it was a celebration of our local culture and entertainment too.

"There has been so much to celebrate in Coventry and Warwickshire in recent days and we're delighted for all of our winners, all of those who were highly commended, everyone who was shortlisted and we're grateful to all of our sponsors and supporters."

Visit www.cw-chamber.co.uk/awards/2026-winners for more information on the winners.

INTERNATIONAL METALS & CABLE RECYCLING LTD

We purchase all Ferrous and Non Ferrous Metal Batteries and Cables

Collection Service Available

Long Marston Road, Long Marston, Stratford Upon Avon, Warwickshire, CV37 8AQ

01789 721 288

info@imcr.co.uk

Open Mon/Fri - 8am - 5pm

DOMESTIC APPLIANCE COVENTRY LTD



HUGE RANGE OF ELECTRICAL APPLIANCES

FANTASTIC SAVINGS

on New and Graded Appliances

We offer a repair and service to all White Goods Appliances (minimum charge applies)



FREE LOCAL DELIVERY

556 - 558 Stoney Stanton Rd,
Coventry CV6 5FS

024 7798 2957
077 8218 1001

10% OFF
on receipt of
this voucher

Terms and conditions apply





Love is in the air - Julien Rosa, Chris Gilbey-Smith, Mollie Dibb and Zoe Mortimer. Picture by Oliver Hindley Photography.

Charting the course of love

LOVE is all around at Leamington's Loft Theatre.

Mike Bartlett's play *Love, Love* questions whether baby boomers are to blame for the fact their children's generation is debt-ridden and adrift.

It's 1967. Kenneth and Sandra know the world is changing, and they want some of it. Smoking, drinking, affectionate and paranoid, they journey forty years from initial burst to full bloom.

The pair meet, get married, have children, divorce and settle into retirement over the course of the play. We follow their trajectory in three acts that take place in 1967, 1990 and

2011, each capturing a specific moment in family life and British politics.

Their children, on the other hand, bitterly rail against their parents' irresponsibility and their relaxed, laissez-faire attitude.

The play premiered in a touring production in 2010 with a new production by the Royal Court Theatre in 2012, and has had revivals in London and on Broadway.

The production, running until May 16, features strong language, sexual dialogue, and mature themes.

Visit www.lofttheatrecompany.com for full details.

Theatre starts appeal to help secure next stage of story

A THEATRE company which has been entertaining audiences in Leamington for more than a century is seeking a helping hand to continue doing so for another 100 years.

The Loft Theatre Company, the town's only independent live theatre, is launching a major Capital Appeal to fund urgent infrastructure upgrades.

With no public funding from local authorities or the Arts Council, the Victoria Colonnade theatre has relied solely on ticket sales and the generosity of its community for 104 years.

A Loft spokesman said: "This summer, we embark on our most ambitious capital project in over half a century. The theatre's roof, heating, air-conditioning, and ventilation systems are in critical need of renewal."

"The project will secure the theatre's infrastructure, improve the comfort of our audiences, reduce our annual running costs, help the environment by switching to systems that run entirely on electricity (rather than the gas systems we currently use), and enhance the experience of all those who volun-

teer at the Loft, including actors, creative teams, managers, front of house staff, and technicians.

"The total project budget is £500,000, and work will take place over the summer. While grants and reserves will cover part of the cost, we are calling on our community to help raise the remaining funds.

"Whether you've enjoyed a performance at the Loft or simply believe in the power of live theatre, your support matters. Donations of all sizes are welcome, and Gift Aid can increase your contribution by 25 per cent at no extra cost if you're a UK taxpayer.

"Together, we can ensure the Loft continues entertaining audiences for another 100 years."

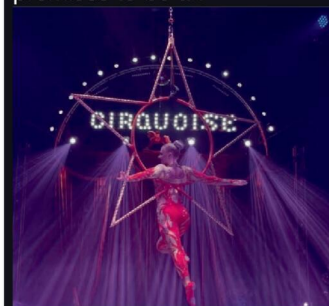
Supporters will be recognised on the Loft's website, and higher tiers include exclusive benefits such as behind-the-scenes tours, priority booking and complimentary tickets.

To make a donation, visit lofttheatrecompany.com/appeal. Individuals, businesses or organisations which want to make a larger donation, can contact chairman David Fletcher at chairman@lofttheatrecompany.com.

Step right up! Melbicks Garden Centre hosts brand new circus event

Cirquoise Circus is bringing a spectacular new show to Melbicks Garden Centre in Birmingham this May half-term.

Running from Saturday 23rd May to Sunday 31st May, the hour-long extravaganza promises to be an



unforgettable experience for the whole family to enjoy.

With gravity-defying acrobatics, spellbinding contortionists and outrageously funny clowns, the contemporary-style circus features performers from around the world.

Cirquoise delivers an incredible combination of jaw-dropping talent, electric atmosphere and high-energy performances. Prepare to be amazed!

There will be two performances each day at 10am-11am and 3pm-4pm. Tickets are priced at £7.99 and can be booked online at www.bluediamond.gg



Garden Centres



CIRQUOISE

CIRCUS SHOW

23RD - 31ST MAY | £7.99 PER PERSON
(UNDER 18 MONTHS FREE)



Book your tickets today!

Visit events.bluediamond.gg or scan the QR Code.



Garden Centres

Melbicks Garden Centre, Chester Road, Coleshill, Birmingham, B46 3HY



Exclusive Invitation: Meet the Specialist

Do you have hand or wrist pain?

Receive a free 1:1 mini-consultation with Consultant Hand & Wrist Surgeon Mr Shyamalan to discuss your hand or wrist concerns, as part of our hand health information evening.

- ✓ 1:1 mini consultation
- ✓ Expert guidance
- ✓ Zero cost
- ✓ Refreshment included

<h1>3</h1> <p>June 2026</p>	<p>6pm - 8pm</p>	<p>Silhillians Sports Club</p>
---------------------------------	----------------------	------------------------------------

www.midlandhandclinic.com



Stacey has been partially deaf since childhood and has worn bilateral hearing aids for the past three years. Inset: Josh is a technician training to be a paramedic and was diagnosed deaf at the age of three. Images s.



Ambulance service is busting some myths for deaf awareness week

by **Ashleigh Osborne**
ashleigh.osborne@bullivantmedia.com

WEST Midlands Ambulance Service (WMAS) trust is supporting deaf awareness week, to challenge misconceptions about being deaf and provide practical advice on communicating with people who are deaf or hard of hearing.

Two members of WMAS staff – Stacey Powell and Josh Dovey – have shared their experiences of working in frontline ambulance roles while being deaf.

Stacey, a supervisor in the 999 emergency operations centre, has been partially deaf since childhood and has worn bilateral hearing aids for three years.

She said: “Whilst being deaf can seem very daunting in a job that’s primarily listening to people, I’ve received nothing but support. The trust has provided me with a kit to use with my hearing aids so I can Bluetooth my hearing aids to hear patients directly through them.”

Josh, a technician training to be a paramedic, was diagnosed deaf at the age of three. He wears bilateral hearing aids too and highlights the technology that

supports him in his role: “One of the things the trust has provided for me is a Bluetooth stethoscope and it allows me to complete assessments like any other ambulance crew would.”

“I also have a Roger receiver, which is a microphone which connects to my hearing aid that can block out background noise and allows me to hear the patient directly.”

As part of deaf awareness week, the trust is addressing common myths about deafness.

Stacey said: “There are assumptions that people who wear hearing aids can’t hear anything at all but, in my case, I can.

“Without my hearing aids I can hear most things, I mis-hear a lot of things and with a lot of background noise that can make hearing difficult. Lots of people also assume people who are deaf can lip read or use sign language. I can’t use either of those but I do look for facial cues and body language to help me with what people are trying to say to me.”

Josh said: “Not everyone is born deaf, hearing loss can develop over time due to illness, injury or by being in loud environments.”

ThetTrust is sharing advice to help people communicate more effectively with people who are deaf or hard of hearing, includ-

ing: Face the person directly and don’t cover your mouth;

Speak clearly at a normal pace, there’s no need to slow or shout;

Be mindful of background noise and move to a quieter space, if possible.

The trust is also highlighting the 999BSL app, a free emergency video relay service for people who use British Sign Language (BSL). The app enables users to connect with a BSL interpreter in emergencies. The interpreter communicates with emergency services including ambulance, police, fire or coastguard, ensuring deaf individuals can quickly access life-saving support.



The Railway Touring Company



Saturday 27 June 2026

A day trip by rail to Penzance.

Join us for Mazey Day in Penzance, the highlight of the annual midsummer Golowan Festival. The streets come alive with traditional arts, music and parades, including the community-built wicker models that have become a much-loved centrepiece of the celebrations. Explore street markets and food and craft stalls, with live music, dancing and street performers entertaining throughout a town beautifully decorated with flags and flowers. Enjoy a highly scenic route through the far west of Cornwall, where the journey is as memorable as the destination.

- Join us from Dorridge, Solihull and Birmingham New Street
- From £115 per person
- Premier Dining available

The Mazey Day Cornishman

MAGNIFICENT LOCOMOTIVES • SCENIC JOURNEYS • FASCINATING DESTINATIONS

For more information please visit railwaytouring.net or phone **01553 661 500**



Moving and authentic view of colonial times at Other Place

Theatre review

Driftwood
The Other Place, Stratford

The notion of independence, its glittering prizes, struggles and ultimate responsibilities, runs through Martina Laird's fine, thought-provoking debut as a writer at the RSC.

Trinidad in the 1950s was a nation craning its neck to see over the fence of British colonial rule and take in the possibilities offered by standing in the world on its own two feet.

The hopes, dreams and failings of a working family in the island's capital mirror the nation's battles to pin down an identity and make the move into the next phase, united by some things, divided by others.

Mother Pearl and estranged siblings Ruby and Diamond all have a desire to make it in the world but represent different ways of achieving that. Like the precious jewels after which they are named, they all also have their defining faults.

Under the brooding presence of colonial rule in the shape of British property owner Mansion and US free-marketeer Tom and his navy crew, the trio variously explore the moral question of ownership, the promise of political change, the expediency of grasping whatever you can and the ever-present option of just getting away to some notional



Cat White as Ruby.
Picture Marc Brenner (RSC).

better place. Pearl, a fine performance from Ellen Thomas, believes the life she has dedicated to raking in the cash for the house's lazy, complacent owner gives her right of eventual ownership. Ruby (Cat White) has few qualms about ditching her mother's subservience for some kind of better business deal and her recent-

ly-discovered brother Diamond is quick to abandon cooperation for the more short-term pragmatism of dealing outside the law.

All in their various ways come up against opposition equally from within the family and from the outside powers whose understanding of moral and supportive intervention comes, as it always does with

colonialism, a poor second to the benefits of exploitation.

Ultimately the efforts to wrest control are dealt with in a manner redolent of the brutal picture of forced occupation painted nearly fifty years ago in the Romans in Britain. Unseen but deeply shocking nevertheless.

Perhaps the outcome is as humili-

ating and dispiriting as it should be and the knowledge that independence for the nation coming only a decade later would not be without its costs, but there is redemption and hope enough to provoke thought.

This is a fine production which, under director Justin Audibert, makes excellent use of the Other Place's intimate dimensions but would, in truth, be perfectly at home in a larger theatre.

Sadeysa Greenaway-Bailey's design brings something not often seen these days in Stratford, a box set. A lovingly realised island interior whose walls expand and contract perhaps to underline the restrictive nature of political hegemony. Fine details and wonderfully atmospheric lighting provide a compact and at times stifling background for the action.

The script's unwavering use of Trinidadian patois, coupled with a cast whose performances are firmly embedded in the language's rapid delivery, may mean concentration levels have to be high but, despite some things inevitably being lost, the authenticity is worth the effort.

With some delightful moments of comedy scattered throughout this play, and this production particularly, offers a glimpse of a world and a world-view which will stay long in the mind.

Matthew Salisbury

just go holidays



By Coach from Coventry, Rugby

Reader Travel

Observer



Scarborough, York, Whitby & the North Yorkshire Moors

Departing Mon 28 Sep '26

Discover Yorkshire's stunning coast and moorland on this five-day escape based in Scarborough. Highlights include historic Whitby with its dramatic cliffs and abbey, the scenic village of Goathland and the sweeping landscapes of the North York Moors.

SO MUCH INCLUDED...

- ✓ Return coach travel from Rugby
- ✓ 4 nights at the Royal Hotel, Scarborough (IG2 rating) with dinner & breakfast
- ✓ Entertainment some evenings
- ✓ Excursions to Whitby, North Yorkshire Moors (Goathland & Pickering) & York

Optional excursion to Beverley & Filey (£12pp)

5 Days by Coach **only £399**

Single Supplement £100



Folkestone Canterbury & Coastal Kent

Departing Sun 16 Aug '26

Folkestone provides us with the perfect base to discover the highlights of coastal Kent and East Sussex on this six-day getaway, featuring excursions to the cathedral city of Canterbury plus charming Sandwich and Margate, with an optional trip to Hastings.

SO MUCH INCLUDED...

- ✓ Return coach travel from Rugby, Coventry
- ✓ 5 nights at the Grand Burstin Hotel, Folkestone (IG2 rating) with dinner & breakfast
- ✓ Light entertainment every evening
- ✓ Excursions to Rochester, Canterbury, Margate & Sandwich

Optional excursion to Hastings (£12pp)

6 Days by Coach **only £379**

Single Supplement £100



Llandudno & Scenic Snowdonia

Departing Mon 24 Aug '26

Experience five great days away to discover the beautiful coastline and spectacular scenery of North Wales, along with the elegant, refined attractions of Llandudno and the magnificent Snowdonia National Park, where we visit historic towns and quaint villages.

SO MUCH INCLUDED...

- ✓ Return coach travel from Rugby, Coventry
- ✓ 4 nights at the Grand Hotel, Llandudno (IG2+ rating) with dinner & breakfast
- ✓ Entertainment some evenings
- ✓ Excursions to Betws-y-Coed, Conwy, Llanberis & Caernarfon

Optional excursion to Llangollen (£12pp)

5 Days by Coach **only £389**

Single Supplement £100

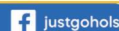
For more information, or to book, please call

03332 342 514 Quote **osg**

or visit us online at

justgoholidays.com/OSG

033 numbers are free within inclusive minutes packages otherwise standard rates apply.



These packages are subject to Just Go! Holidays terms & conditions. Coach bookings are protected by Bonded Coach Holidays & the Association of Bonded Travel Organisers Trust Ltd. Air holidays are ATOL protected No. 10883. Prices are per person, based on two people sharing a room & are based on bookings made up to 7 days post publication, after which prices may fluctuate. Calls to OSG numbers are free with inclusive minutes packages, else standard rates apply. Choices of date, hotel, airport or pick-up location may incur a supplement. Please see website or call for full details.



Varied menu, unwavering quality

Music review

Leamington Music Festival 2026
The Pump Rooms
and All Saints Church

THERE are many ways to get a festival started - a rousing rendition of a favourite usually does the trick. But the Leamington Musical Festival prides itself on providing the unusual and, when **Fibonacci Quartet** violinist Kristof Kohut opened proceedings singing unaccompanied a plaintive Moravian folk song the message was clear, expect to be surprised.

Friday's opening arrangement of love songs set the tone for much of what the Fibonacci then delivered. Plenty of desperately fragile moments leading to passages of almost unsustainable attack and energy all set against a pace which quickened and then quickened again.

Bartok's String Quartet No 5, written the best part of a century ago still has the power to divide opinion. Often fractured and challenging to follow, this is tough stuff but what's not in doubt was the passion and fervour with which the quartet tackled the task.

Schumann's A Major Quartet No 3 brought a more settled landscape with a few more reassuring landmarks but the approach from the quartet was as intense and committed as ever. The two central movements stood out with their wide dynamic range and rich tones, but



The Fibonacci Quartet started the weekend with a concert full of vigour.

not many pages of the score go by without players struggling to stay in their seats and there's more head-banging than any rock festival will witness this summer.

Comparisons

Full-on and unashamedly dramatic, this was a fine way to celebrate the weekend's opening.

Festivals are also all about comparisons, a chance to weigh up music and the way it's produced. A wonderful counterpoint to the youthful vigour of the Fibonacci came with the performance on Saturday from the experienced warmth of the

Guarneri Piano Trio.

Two Beethoven trios and a large helping of Dvorak were delivered with an almost casual, relaxed approach only to be expected from a trio with some forty years experience of playing together.

Unnecessary dramatics are ditched in favour of a comfort and familiarity that looks for all the world like three men who enjoy each other's company as much as the music.

The highlight of the evening was Dvorak's Piano Trio 4 'Dumky' - a piece which, over the span of six movements, provides the opportunity to explore a constantly shifting

construction of gentle moments and passages of lush romantic melody. The trio looked and sounded utterly at home in a performance to savour.

Performing comfortably together played an important part in Sunday evening's larger orchestral concert at All Saints. The **Sinfonia of Birmingham** welcomed soloists Zoe Beyers (violin) and Peter Dixon (cello) for Brahms's monumental romantic Double Concerto.

Despite spending time looking at each other across the ranks of the BBC Philharmonic this was their debut as joint soloists and the chemistry was spot-on from the

start. Clearly relishing the opportunities to trade blows that Brahms offers, this was music-making at its most joyous.

Sinfonia conductor Michael Seal has in the last few years brought out the best in this orchestra and, but for a few untidy entries here and there, the quality is high in everything they do.

Engaging

Nowhere was this more evident than in the closing performance of Malcolm Arnold's engaging fifth symphony. Packed with almost cinematic melodies and plenty of drama this is a piece very much about textures.

Rich tones, stretched tension and a full cast of percussion interventions made for a good test of the Sinfonia's precision and detail, a test the orchestra passed with ease. The second movement, a lush sweep of brass and strings may have been the highlight, but there were others in what must have been a welcome boost for Arnold's overall popularity.

The church, in common with all the concerts in this weekend, enjoyed a good turnout. Leamington's music festival has always been a popular fixture on the music calendar and with quality across the board and unfailingly high as this was, its reputation and support can only keep it right at the forefront of cultural events in the town.

Visit leamingtonmusic.org for details of more concerts and events in Leamington and Warwick.

Matthew Salisbury



Direct Floors
Home service

Carpets | Vinyls | Laminates | Wood



Shop at home for your new carpet and flooring and receive up to 30% off shop prices. We are COVID SAFE with 1,000's to choose from with our mobile showroom!

- ◆ Mobile showroom to your home
- ◆ 1000's Samples to your door
- ◆ Fully qualified insured fitters
- ◆ Family run business since 1999
- ◆ Furniture moved & carpets uplifted for OAP'S & disabled free of charge


Find us on facebook




Happy to help!

Call 7 days a week 8am-9pm
01527-894777
www.direct-floors.co.uk



A Seasonal Guide to Revitalising Your Space

SPRING is a time of renewal and rejuvenation, making it the perfect season to tackle various tasks around the home and garden.

As warmer temperatures set in and nature reawakens, homeowners can take advantage of this opportunity to enhance their living environments. In this guide, we'll explore a multitude of jobs that can be undertaken to ensure your home and garden are ready for the warmer months, focusing on maintenance, organisation, and cultivation.

Spring Cleaning: Refreshing Your Home

One of the first and most important tasks in the spring season is to conduct a thorough spring cleaning. This involves more than just your regular cleaning routine; it's about

deep cleaning every nook and cranny of your home.

- **Decluttering:** Begin by sorting through your belongings. Gather items that you no longer need or use and consider donating them or organising a garage sale. This will not only declutter your space but also make your home more inviting.
- **Dust and Clean:** Focus on areas that are often overlooked during routine cleaning, such as ceiling fans, light fixtures, baseboards, and behind appliances. Dust accumulated over the winter can trigger allergies, so a good spring clean can greatly improve your home environment.
- **Windows and Curtains:** Take the time to clean windows inside and out, allowing natural light to stream in. Wash or replace curtains and blinds, as this can instantly refresh a room.



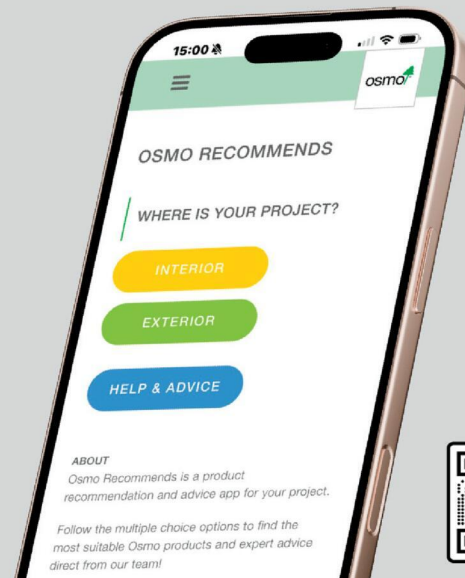
LOOKING FOR PROFESSIONAL WOODCARE ADVICE?



The Osmo Recommends App is a quick and easy tool designed to help you identify the ideal Osmo product for any project.

By answering a few simple questions about the wood type, location, desired finish, and level of protection required, the app instantly provides tailored product recommendations along with the correct application guidance.

Whether you're working on interior or exterior projects, the app streamlines decision-making and ensures you get the best results with the right Osmo solution.



www.osmouk.com



Spring Home and Garden

Garden Preparation: Embracing Nature's Growth

As the days become longer and warmer, the garden requires attention to prepare for a flourishing summer. Spring is a pivotal time for planting and nurturing your outdoor space.

- **Soil Preparation:** Start by inspecting your garden beds. Clear away any debris, weeds, or dead plants from the



winter months. Consider testing your soil's pH and nutrient levels, as this will help you determine what amendments may be necessary to promote healthy plant growth.

- **Planting:** Spring is ideal for planting a variety of flowers, vegetables, and herbs. Depending on your local climate, consider sowing seeds for vegetables such as peas, lettuce, and spinach. In terms of flowers, hardy annuals and perennials can be planted to bring a burst of colour to your garden.
- **Mulching:** Once your plants are in place, apply a layer of mulch to help retain soil moisture and suppress weeds.



This will also give your garden beds a tidy appearance.

Lawn Care: Reviving Your Green Space

The lawn often requires extra care in the spring to ensure it remains lush and green throughout the growing season.

- **Mowing and Edging:** As the grass begins to grow, a regular mowing schedule will help keep it at an appropriate height. Additionally, edging the lawn can create a polished look and define borders between lawn and garden beds.
- **Overseeding:** Consider overseeding your lawn with a good quality grass seed to fill in thin or bare patches. This promotes a thicker, healthier lawn that is more resistant to pests and disease.
- **Fertilising:** Spring is the perfect time to fertilise your lawn, as it will stimulate growth. Choose a slow-release fertiliser suitable for your specific type of grass.

Home Maintenance: Proactive Upkeep

Spring is an ideal time to inspect and maintain your home's systems and structures, ensuring everything operates smoothly.

- **Roof Inspection:** After harsh winter weather, check your roof for any damage, such as missing tiles or leaks. Be proactive; fix any issues now to avoid more extensive repairs later.
- **Gutter Cleaning:** Clear any debris from gutters and downspouts to prevent blockages. This is essential to ensure proper drainage and prevent water damage to your home.
- **Heating and Cooling Systems:** Have your heating system serviced to prepare for the transition into the warmer months. If you have air conditioning, ensure it is cleaned and serviced to be ready for the summer heat.

Outdoor Spaces: Enhancing Your Experience

Spring is not only about upkeep; it's also an opportunity to improve and enhance your outdoor living areas.

- **Patio and Deck Maintenance:** Inspect your patio and deck for any signs of wear and tear. Clean the surfaces and check for loose boards or railings. A fresh coat of paint or sealant can improve longevity and aesthetics.
- **Garden Furniture:** Wash outdoor

furniture and inspect for any damage. Consider reupholstering or simply rearranging your furniture to maximise space and enjoy your garden more thoroughly.

- **Creating Zones:** If your garden space allows, consider creating different zones for various activities—like a relaxation area, a vegetable patch, and a play area for children. This creates a multifunctional space that can cater to all family needs.



LOCAL PLUMBING YOU CAN RELY ON!

PROUD TO SERVE OUR LOCAL COMMUNITY

- EMERGENCY PLUMBING**
- PLUMBING & HEATING**
- CCTV & DRAIN JETTING**
- REPAIRS & MAINTENANCE**
- HOME CARE PLANS**

WE'RE JUST A CALL AWAY!

MOBILE
07415 066 381

LANDLINE
01527 332 488

RELIABLE SERVICE

FRIENDLY EXPERTS

LOCAL PLUMBERS

✉ Info@PlumbFixSolutions.co.uk | 🌐 www.PlumbFixSolutions.co.uk

RCN BEDS FURNITURE

£599

SAVE

RECLINERS

£899

ADJUSTABLE BEDS

OTTOMAN BEDS

£299

WHILE STOCKS LAST!

SALE

OAK/PINE BEDROOMS

SAVE

CARPETS

SAVE

ITALIAN SOFAS

SLIDING ROBES

SAVE

MATTRESSES

BEDROOM FURNITURE

SAVE

WE ARE OPEN 6 DAYS 9AM-4:30PM - FREE FAST DELIVERY

rcn
Beds & Furniture

HENLEY ROAD, COVENTRY
TEL: 02476 603254



The Californian poppy is a sun loving plant which can be sowed directly into the ground at this time of year. s

May means it's showtime!

by **Andy Morris**
andy.morris@bullivantmedia.com

MAY is the month when everything gets busy in the garden.

The RHS Chelsea Flower Show, from May 19-23, gets the show season off to a start and can be a great inspiration for gardeners.

One of simplest starter ideas for anyone new to gardening is to create a herb garden.

From sage to thyme, rosemary to clipped bay and flowering chives, you can combine a variety of herbs in one space that will produce long-lasting displays as well as regular pickings for the kitchen. Successful herb garden designs often define the space using brick pavers, dividing-up the area with small paths to

provide easy access for picking. For small spaces, herbs can also be grown in pots. Low-growing thyme is a herb-garden favourite, perfect for a herb carpet or filling gaps between paving. Mint is a versatile herb best kept contained to prevent it invading borders and flowerbeds so grow it in a pot or large, bottomless bucket. Rosemary is a hardy shrub with aromatic leaves and has a long flowering season. Chives provide an ornamental floral display to any border or planter.

As many herbs have Mediterranean origins, they like being in the sun so the timing is perfect as May sees more sunshine and longer days – which means more time for gardening!

Another sun loving plant that can be sowed direct into the ground at this time of year is the Californian

poppy. Sprinkle seeds thinly and evenly over a well-raked patch of damp soil in full sun. Use a small hand rake to gently work the seeds into the soil and keep an eye out for seedlings in seven to 10 days. Once they are big enough to handle, thin them out to leave a plant every 15cm.

Planting

Frut and veg growers can plant out tomatoes, courgettes and pumpkins that were sown under cover, once all risk of frost has passed and they have been hardened off.

Don't forget to stake pea plants as they grow and it's also a good time to thin out raspberries by removing suckers or seedlings before they get so big they have to be dug out.

Pot crops need to be fed and

watered and acid-loving fruits such as blueberries and cranberries should be watered with collected rainwater.

To ensure a continuous supply of summer crops, sow small batches of beetroot, lettuce, radish and spring onion seeds every couple of weeks.

If there is one job to be done this month, it's to 'Chelsea chop' perennials – so called, because it's done around the time of RHS Chelsea Flower Show. It works best with herbaceous perennials that are naturally branching, such as echinacea, sedum, phlox, penstemon and salvia. Cutting them back now will extend their flowering season, encourage compact growth and reduce the need for staking. Simply cut back stems by a third, using shears or secateurs.

Other May garden jobs include:

- Watch out for late frosts and protect tender plants
- Earth up potatoes and plant any still remaining
- Plant out summer bedding plants at the end of the month, weather permitting
- Water early and late to optimise water, recycled if possible
- Hoe off vegetable-patch weeds
- Open greenhouse vents and doors on warm days
- Mow lawns but consider leaving areas uncut for wildlife, or mow less often, so flowers can bloom
- Check carefully for nesting birds before clipping hedges
- Lift and divide crowded clumps of daffodils and other spring bulbs
- Watch out for viburnum beetle and lily beetle grubs and remove if causing damage.

Enjoy Exclusive, Evergreen Spring Edition of

Seasons



Following on from the fantastic response to our debut 'Winter' edition of Seasons, we're delighted to announce that Seasons 'Spring' edition has now Sprung.

As the days grow longer and our towns, villages and the countryside emerge from the long dark days of winter, we are all enjoying the arrival of the 'Spring' of 2026.

Pick up a copy locally for free, or simply browse on line
www.seasons-magazine.com

The 'Spring' edition of Seasons is a celebration of all things 'local'. It's uplifting, inspiring and quintessentially local across the three counties of Warwickshire, Worcestershire and the West Midlands.

The beautifully glossy A5 magazine is freely available in print, from a major supermarket near you - and, the 'Spring' edition of Seasons is also available 24/7 on line and...it's being showcased across all of our local Observer and Standard Newspapers, websites and social media platforms, and will continue to be so, for the next 12 months.

Enjoy the exclusive, evergreen, 'Spring' edition of Seasons by logging on to www.seasons-magazine.com

You can still browse the 'Winter' edition of Seasons 24/7 and now, you can enjoy the 'Spring' edition of Seasons too!

If you'd like your business to be featured in the next edition of Seasons, or if you'd like more details - just call **01527 588688** and speak to Kelly, Caroline, Roisin, Debra, Paul, Gareth or Sharon.

Seasons magazine is brought to you, by your local Observer and your local Standard Newspaper Team

SUDOKU

Complete the grid so that every row, every column and every 3 x 3 box contains every digit from 1 to 9.

EASY

6	4			3				8
			5		6	1		
	3				2			4
3				5	7			1
	8	9	6	1		4	5	
			2					6
4			7				9	8
	6	8	3		5			1
	7			8		6	3	5

HARD

				6	8		7	
			2		8			
				5			6	
	2	7		9	4	6		
4								8
		9	8	1		7	2	
	9			4				
			1		5			
3	2	7						

PATHFINDER

Beginning with the top highlighted letter, follow a continuous path of words associated with the given subject. The trail goes through each letter once, twisting up, down and sideways, but never diagonally.

Landmarks

E L T R C G L L A S S C A T H
 I E O A P U E A B I L G A S E
 F F W E R I L C T U E R A L D
 P F O E L S O R S M S A D A R
 I S R A N I P O L O S F I T T
 S A E W O N N C O I M A L E L
 A E C O T G I A T L I I M E
 C R U E E V O U N P A E A M R
 H L R T R I F A H O M P I T E
 A A S N E K E P C E I S D N V
 M B I P B R N E L N S N P O E
 A R K O I A N A M I T O N C C
 R O C F G L T T E P A H E H I
 P E H S A P A A R U R T N A O
 S T S I N S R G G B N E D R B

Solutions opposite

CROSSWORD

	1	2		3		4		5		6			8
7													
9								10					
11						12							
13		14					15	16					
						17							
18				19				20		21			
22						23							
	24												

ACROSS

- Stage make-up (11)
- Set apart (7)
- Hurl (5)
- Doomed (5)
- Refuse (7)
- Mourn (6)
- Dormant (6)
- Public transport (7)
- A fish (5)
- Additional (5)
- Unyielding (7)
- Shakespeare play (2,3,4,2)

DOWN

- Perch (5)
- Desert (7)
- Vigour (6)
- Change (5)
- Relate (7)
- Paris landmark (6,5)
- Yam (5,6)
- Summary of business (7)
- A reverse (7)
- Attack (6)
- A spree (5)
- Giraffe-like animal (5)

Scribble pad

LADDER

Using the clues provided, fill in each step of the ladder with a new word, changing one letter at a time.

- Generous
- Skin
- Monetary unit
- Attack
- Settled a bill



NINER

Each number from 1 to 9 represents a different letter. Solve the clues and insert the letters in the appropriate squares to discover a word which uses all nine letters.

- 549 gives a fish;
- 7126 gives a second fish;
- 883 gives a third fish.

1	2	3	4	5	6	7	8	9
---	---	---	---	---	---	---	---	---

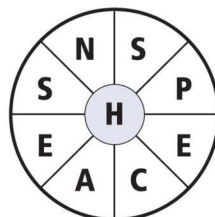
CODEWORD

This puzzle has no clues. Instead, every number printed in the grid represents a letter, with the same number always representing the same letter. For example, if 8 turns out to be a V, you can write in V wherever a square contains 8. Using your knowledge of words, complete the puzzle.

		11		18			18		14	6	13	22	13		
A		10	24	13	6	3	7	22		13			9		
B															
C			20			22			14		26	22	18	22	22
D															
E		9	25	3	12	22	13	15	4	18					18
F															
G			13				25			22			2		10
H		14	7	6	1	14	1	22		1	13	4	11	22	
I															
J															
K															
L															
M		11	14	11	1	6		22	21	22	11	1	25	13	
N															
O		16		16		26			4					3	
P															
Q		14					20	6	13	1	16	26	14	13	23
R															
S		13	14	17	25	13		6			25			4	
T															
U			19			4		10	1	24	18	6	10	1	
V		1	22	5	22	22		23			18				
W															
X															
Y															
Z															

WORDWHEEL

You have 10 mins to find as many words as possible using the letters in the wheel. Each must use the hub letter and at least 3 others. Letters may be used only once. You cannot use plurals, foreign words or proper nouns. There is at least one 9-letter word to be found.

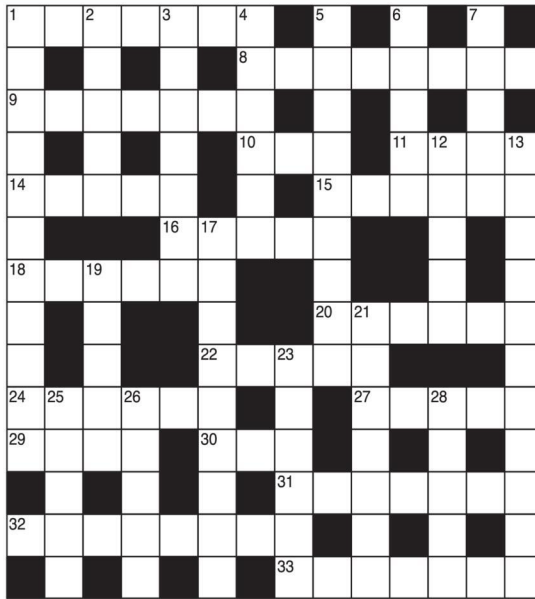


How you rate
 15 words: average 25 words: very good
 20 words: good 30 or more: excellent.

GENERAL KNOWLEDGE CROSSWORD

ACROSS

- The capital of Ontario, Canada (7)
- See 27 Across
- Racecourse where the Grand National is run (7)
- 10 & 26 Down. Bartolomé de --- ---, Spanish-born, Dominican historian and missionary called the "apostle of the Indians" (3,5)
- A member or the language of a Siouan people of Montana (4)
- Newspapers generally (5)
- Colourless, odourless gas, a hydrocarbon of the alkane series (6)
- Clare ---- became the UK's Secretary of State for International development in 1997 (5)
- Caterpillars, for example (6)
- Explosive mixture of 80 percent ammonium nitrate and 20 percent TNT (6)
- In the US, a hanging or curtain (5)
- Orders issued by a monarch or lawgiver (6)
- 27 & 8. The decathlon gold medal winner at the 1984 Olympics (5,8)
- Sodium carbonate or bicarbonate (4)
- 30 & 5 Down. Famous, long-running play by Agatha Christie (3,6)
- Deep South "cotton state" of the US (7)
- "After a momentary silence spake Some Vessel of a more --- Make..." (Omar Khayyam) (8)
- An extract obtained by distillation (7)



DOWN

- Canvases attached to bed-like frames by springs, used by acrobats, gymnasts, etc (11)
- The maximum effective distance of a projectile fired from a weapon (5)
- The clever waiting-woman and confidante of Portia in The Merchant of Venice (7)
- Opera by Rossini, based on a play by Shakespeare (6)
- See 30 Across
- An era in history, science, life, etc with a defining characteristic (5)
- Principal monetary unit of Costa Rica (5)
- The capital of the kingdom of Morocco (5)
- Variety of cheese named after a district of North Yorkshire (11)
- A grave marker (9)
- Stiff, unyielding, not flexible (5)
- Fruit similar to small, brown apples, eaten when decayed (7)
- Nocturnal lemur of Madagascar (3-3)
- Surname of the poet whose works include The Ecstasy, Death Be Not Proud, etc (5)
- See 10 Across
- "For mine own part, I shall be glad to --- of noble men," Julius Caesar (Act 4, Scene 3) (5)

SOLUTIONS

ACROSS: 1 Toronto; 8 Thompson; 9 Aintree; 10 Lasz; 11 Crow; 14 Press; 15 Ethane; 16 Short; 18 Larvae; 20 Amalot; 22 Drape; 24 Edicts; 27 Dally; 29 Soda; 30 The; 31 Alabama; 32 Ungainly; 33 Essence. DOWN: 1 Trampolines; 2 Range; 3 Nerissa; 4 Orlé; 5 Mousetrap; 6 Epoch; 7 Colon; 12 Rabat; 13 Wensleydale; 17 Headstone; 19 Rigid; 21 Medias; 23 Aye-aye; 25 Dome; 26 Casas; 28 Learn.

General Knowledge Crossword

ACROSS: 1 Greasepaint; 9 Isolate; 10 Throw; 11 Fated; 12 Garbage; 13 Lament; 15 Aleep; 18 Omnibus; 20 Trout; 22 Extra; 23 Adament; 24 As You Like It; 27 Roost; 3 Abandon; 4 Energy; 5 Alter; 6 Narrate; 7 Eiffel Tower; 8 Sweet Potato; 14 Minutes; 16 Setback; 17 Assail; 19 Beans; 21 Okapi.

Crossword

UNLOCATED: Gibraltar, Spanish Steps.
Niner: Familia, Pompeii, Little Mermaid, Ponte Vecchio, Brandenburg.
CHEAPNESS: Eiffel Tower, Parc Güell, Acropolis, Leaning Tower of Pisa, Sacré

Wordwheel Pathfinder

1=T-Q, 3=N, 4=U, 5=P, 6=L, 7=G, 8=V, 9=W, King, Kind, Rind, Rand, Raid, Paid, Pair.

Ladder Codeword

6	4	2	1	3	9	5	8	7
8	9	7	5	4	6	1	2	3
1	3	5	8	7	9	6	4	
3	2	6	9	6	1	3	4	5
5	1	4	2	9	8	3	7	6
4	5	3	7	6	1	2	9	8
9	6	8	3	2	5	7	4	1
2	7	1	9	8	4	6	3	5

Easy Sudoku

Hard



It's time to Like, Follow & Subscribe

BREAKING NEWS
WHAT'S ON
SPORT INTERVIEWS

Don't be LEFT BEHIND.....

- CoventryObserver
- LeamingtonObserver
- RugbyObserver

- @CovObserverNews
- @LeamObs
- @RugbyObserver

- CovObserver
- Leamington.Observer
- Rugby.Observer

REDDITCH BID & SHAKESPEARE RALLY PROMOTIONS PRESENTS



FREE EVENT



SATURDAY Post - 1990 Vehicles

SUNDAY Pre - 1990 Vehicles

EXPLORE CLASSIC, VINTAGE AND MODERN CARS | MOTORBIKES, TRUCKS AND STEAM ENGINES | KIDS FUN FAIR | FOOD & CRAFT STALLS | THE DINO BUS EXPERIENCE

SAT 16 & SUN 17 MAY 11:00 TO 16:00

REDDITCH TOWN CENTRE



www.redditchmotorshow.co.uk



Classified

TELEPHONE 01527 588688 FACSIMILE 01527 584371

PUBLIC NOTICES

Warwickshire County Council

ROAD TRAFFIC REGULATION ACT 1984

Warwickshire County Council has made the following Temporary Traffic Orders:

FEATHERBED LANE, RUGBY

Order Effect: Road closed to vehicular traffic.
Reason for Order: Repair/replacement of manhole covers and frame, 08.00hrs-16.00hrs
Order Commences: 12 May 2026 for up to 18 months.
Anticipated Completion: 12 May 2026.
Access & Diversion: Featherbed Lane, The Kent, School Street, Deerings Road and vice versa.
Contractor: CSP, Tel: 07918 389363.

PUBLIC FOOTPATH GORSE CLOSE, RUGBY

Order Effect: Footpath closure to all traffic.
Reason for Order: To enable cut laying works, 09.30hrs-15.30hrs.
Order Commences: 11 May 2026 for up to 6 months.
Anticipated Completion: 11 May 2026.
Access & Diversion: Footboards and Traffic Management Operatives will be used to safely marshal pedestrians through the works.
Contractor: Sunbelt Rentals Ltd, Tel: 0370 050 0792.

FLECKNOE ROAD, LEAMINGTON HASTINGS

Order Effect: Road closed to vehicular traffic.
Reason for Order: Works for boundary box and meter installation.
Order Commences: 12 May 2026 for up to 18 months.
Anticipated Completion: 13 May 2026.
Access & Diversion: Southam Road, Hospital Lane, Main Street, Hayway Lane and vice versa.
Contractor: Chevron Traffic Management Ltd, Tel: 0330 008 0820.

Warwickshire County Council proposes to make the following Temporary Traffic Orders:

FISHER AVENUE, RUGBY

Order Effect: Road closed to vehicular traffic.
Reason for Order: To enable wastewater pipe repair works.
Order Commences: 25 May 2026 for up to 18 months.
Anticipated Completion: 29 May 2026.
Access & Diversion: Ashlawn Road, Vernon Avenue, St Johns Avenue and vice versa.
Contractor: STW Sewerage, Tel: 0345 602 7723.

COAL PIT LANE, MONKS KIRBY & WILLEY

Order Effect: Road closed to vehicular traffic from Monks Kirby Lane to Spring Farm.
Reason for Order: To enable water mains renewal works.
Order Commences: 25 May 2026 for up to 18 months.
Anticipated Completion: 22 June 2026.
Access & Diversion: Penn Lane, Coal Pit Lane, Mere Lane, Fosse Way, A5, Watling Street, Coventry Road and vice versa.
Contractor: Severn Trent Water, Tel: 0800 783 4444.

SAWBIDGE ROAD, GRANDBOROUGH

Order Effect: Road closed to vehicular traffic from Hargrave Close to Main Street.
Reason for Order: Water connection installation works.
Order Commences: 26 May 2026 for up to 18 months.
Anticipated Completion: 28 May 2026.
Access & Diversion: Main Street, Grandborough Road, Woolscot Road, Daventry Road, London Road, Moor Lane, Sawbridge Road and vice versa.
Contractor: Network Plus, Tel: 01332 820920.

SCHOOL STREET, LONG LAWFORD

Order Effect: Road closed to vehicular traffic.
Reason for Order: To enable boundary box renewal and meter installation.
Order Commences: 28 May 2026 for up to 18 months.
Anticipated Completion: 29 May 2026.
Access & Diversion: Townsend Lane, Lawford Road, Rugby Road and vice versa.
Contractor: Chevron TM Ltd, Tel: 0330 008 0820.

ASHLAWN ROAD & ONLEY LANE, RUGBY

Order Effect: A temporary 30mph speed restriction will be imposed on Ashlawn Road, Rugby from Ashlawn Road/Barby Road/Onley Lane junction for a distance of 200 metres east and west side. A temporary 30mph speed restriction will be imposed on Onley Lane, Rugby from Ashlawn Road/Barby Road/Onley Lane junction for a distance of 330 metres.
Reason for Order: For the safety of all road users and of contractors working on or near to the carriageway.

Order Commences: 26 May 2026 for up to 18 months.
Anticipated Completion: 19 February 2027.
Contractor: M J Church (Plant) Ltd, Tel: 01225 891591.

BARBY ROAD, CALDECOTT, RUGBY

Order Effect: Road closed to vehicular traffic.
Reason for Order: To enable signalised crossing alterations and toucan crossing works.
Order Commences: 26 May 2026 for up to 18 months.
Anticipated Completion: 17 July 2026.
Access & Diversion: Ashlawn Road, Hillmorton Road, Barby Road and vice versa. Access to the hospital will be maintained at all times Access for cyclists and horses will be maintained.
Contractor: M J Church, Tel: 01225 891591.

ABBAY STREET, RUGBY

Order Effect: Road closed to vehicular traffic outside 171.
Reason for Order: Works to repair breaking out and fretting defects.
Order Commences: 25 May 2026 for up to 18 months.
Anticipated Completion: 25 May 2026.
Access & Diversion: Abbey Street, Murray Road, Whitehall Road, Clifton Road, South Street and vice versa.
Contractor: Network Plus, Tel: 03339 969800.

For all of the above temporary orders, pedestrian access to and egress from properties and land situated adjacent to the length of road to be closed will be maintained at all times. Vehicular access will be maintained where possible.

To report any problems with these works or for further details of our current & planned roadworks visit our website warwickshire.gov.uk/roadworksmap or call us 01926 412515.

S Duxbury, Director of Strategy, Planning & Governance, Shire Hall, Warwick CV34 4RL Date 07 April 2026

PUBLIC NOTICES

PUBLIC NOTICES

Warwickshire County Council

ROAD TRAFFIC REGULATION ACT 1984

Warwickshire County Council has made the following Temporary Traffic Orders:

FOSSIE WAY, CHESTERTON

Order Effect: Road closed between Banbury Road and Windmill Hill Lane.
Reason for Order: Works to replace bridge expansion joint.
Order Commences: 11 May 2026 for up to 18 months.
Anticipated Completion: 18 May 2026.

Access & Diversion: Fosse Way, Banbury Road, Gaydon Road, Station Road, Deppers Bridge Road, Ufton Road, Southam Road, Ufton Hill and vice versa.
Contractor: UK Road Services Ltd, Tel: 07480 932777.

VICARAGE LANE, PRIORS MARSTON

Order Effect: Road closed to vehicular traffic.
Reason for Order: Works to install new gas service.
Order Commences: 11 May 2026 for up to 18 months.
Anticipated Completion: 15 May 2026.
Access & Diversion: Keys Lane, Shuckburgh Road, Vicarage Lane and vice versa.
Contractor: Cadent Gas, Tel: 0800 111 999.

SUTCLIFFE DRIVE, HARBURY

Order Effect: Road closed to vehicular traffic.
Reason for Order: Works to lay new telecomms ducting.
Order Commences: 13 May 2026 for up to 18 months.
Anticipated Completion: 14 May 2026.
Access & Diversion: No diversion available.
Contractor: Quantum Traffic Management, Tel: 01724 786286.

For all of the above temporary orders, pedestrian access to and egress from properties and land situated adjacent to the length of road to be closed will be maintained at all times. Vehicular access will be maintained where possible.

To report any problems with these works or for further details of our current & planned roadworks visit our website warwickshire.gov.uk/roadworksmap or call us 01926 412515.

S Duxbury, Director of Strategy, Planning & Governance, Shire Hall, Warwick CV34 4RL Date 07 May 2026

PUBLIC NOTICES

Goods Vehicle Operator's Licence

Jeanette Vera Wareham trading as EPW Car Recovery of 69 Afriston Road, Finham, Coventry CV3 6FG is applying to change an existing licence as follows: To keep an extra 1 goods vehicle and 0 trailers at the operating centre at Whites of Coventry Ltd, Ryton on Dunsmore CV8 3DX.

Owners or occupiers of land (including buildings) near the operating centre(s) who believe that their use or enjoyment of that land would be affected, should make written representations to the Traffic Commissioner at Quarry House, Quarry Hill, Leeds, LS2 7UE, stating their reasons, within 21 days of this notice. Representatives must at the same time send a copy of their representations to the applicant at the address given at the top of this notice. A Guide to Making Representations is available at www.gov.uk/government/publications/aguide-to-making-representations-objections-and-complaints-goods-vehicle-operator-licensing

PUBLIC SERVICE VEHICLE OPERATOR'S LICENCE

Warwickshire Travel Ltd of 80, Warwick Road, Wolston, Coventry, CV8 3HA is applying to the Traffic Commissioner for a Public Service Vehicle Operator's Licence to operate 20 vehicles from the operating centre at Whitehouse Farm, Oxford Road, Princesoerpe, Rugby CV23 9QD and to operate 20 vehicles from the operating centre at Unit 6&7, Dunchurch Trading Estate, Rugby, CV23 9LN.

Owners or occupiers of land (including buildings) near the operating centre who believe their use or enjoyment of that land would be affected, may make written representations to the Traffic Commissioner at: Office of the Traffic Commissioner, 38 George Rd, Birmingham, B15 1PL. Representations must be made within 21 days of the date of this notice.

Representors must at the same time send a copy of their representations to the applicant at the address given above. A guide to making representations is available from the Traffic Commissioner's office.

PUBLIC NOTICES

Rugby Borough Council Town and Country Planning Act 1990 (as amended)

Application Number R26/0356
21, MOULTRIE ROAD, RUGBY, CV21 3BD
Alterations to a Grade II listed building including formation of a new door opening and new boundary treatment with brick piers, walls and railings.

This development may affect a Listed Building. This development may affect a Conservation Area

Application Number R26/0357
21, MOULTRIE ROAD, RUGBY, CV21 3BD
Listed Building Consent for alterations to a Grade II listed building including formation of a new door opening and new boundary treatment with brick piers, walls and railings.

This development may affect a Listed Building. This development may affect a Conservation Area

Members of the public may inspect copies of the application, the plans and documents submitted with it online at: www.planningportal.rugby.gov.uk or in an electronic form at: Town Hall, Evreux Way, Rugby CV21 2RR between the hours of 9.00 am and 5.00 pm Monday to Friday until 30 May 2026. Please note a planning officer would not be present.

If you wish to make an appointment to discuss the application, please contact the case officer. Any person who wishes to make representation to the above mentioned Council about the applications should make them online - www.planningportal.rugby.gov.uk (search for application number and select comment) - or in writing by that date to Chief Planning Officer, Town Hall, Rugby, CV21 2RR.

If an application is determined by the Planning Committee, members of the public may have the opportunity to speak at the meeting. More details about public speaking are available from the Council or on-line at: www.rugby.gov.uk/speakingatplanning

For household or minor commercial applications, in the event of an appeal against a refusal of planning permission, dealt with on the basis of representations in writing, any representations made will be sent to the Secretary of State, and there will be no further opportunity to comment at the appeal stage.

Nicola Smith - Strategic Director for Place

LICENSING ACT 2003 NOTICE OF APPLICATION FOR A PREMISES LICENCE UNDER SECTION 17

Notice is hereby given that on the 1st May 2026 Asda Stores Limited applied to Coventry City Council for a Premises Licence in respect of premises Asda Express Abbey Park PFS, 93 Humber Road, Coventry CV3 4FE. The proposed licensable activities are: 1. The sale by retail of alcohol on Mondays to Sundays between the hours of 00.00 to 24.00. 2. To permit late night refreshment on Mondays to Sundays between the hour of 23.00 and 05.00. Any representations by a responsible authority or any other person regarding this application must be received in writing by: Licensing Authority, Coventry City Council, PO Box 7097, Coventry CV6 9SL. Or send an email to: licensing@coventry.gov.uk no later than the 29th May 2026 stating the grounds for representations. The register of Coventry Council and the record of the application must be inspected during normal office hours at the above address and further information may be available at www.coventry.gov.uk on the public register. It is an offence knowingly or recklessly to make a false statement in connection with an application. The fine for which a person is liable on summary conviction for the offence is unlimited.

LICENSING ACT 2003 - Public Notice D Cafe Launch LTD is applying for the new grant of a Premises Licence for Cider's Kitchen, 17 Parade, Leamington Spa, Warwickshire, CV32 4DF.

If granted the application will allow the following licensable activities to take place: Sale of alcohol on and off the premises, provision of regulated entertainment.

Any person wishing to make representations in relation to this application may do so by writing to the Licensing Authority: Warwick District Council Licensing, Town Hall Parade Royal Leamington Spa Warwickshire CV32 4AT licensing@warwickdc.gov.uk

Representations may only be made for 28 consecutive days from the date of this Notice. A copy of the application for the grant of the above licence is kept by the Licensing Authority at the above address. The application can be viewed Monday to Thursday 9.00 am to 5.00 pm, and 9.00 am to 4.30 pm on Fridays, except Bank Holidays.

It is an offence knowingly or recklessly to make a false statement in connection with an application. The maximum fine for which a person is liable on summary conviction for making a false statement is a Level 5 fine on the Standard Scale. 7th May 2026

PUBLIC NOTICES

TOWN AND COUNTRY PLANNING ACT 1990 (AS AMENDED) NOTICE UNDER ARTICLE 13 OF APPLICATION FOR PLANNING PERMISSION

Proposed development at: 36 Blondevil Street, Coventry, CV3 5EQ
I hereby give notice that an application has been made to Coventry City Council for planning permission for: Change of use to medical practice (Use Class E).
Any owner of the land or tenant who wishes to make representations about this application should write to: Planning Department, Coventry City Council, PO Box 7097, Coventry, CV6 9SL or via: <https://www.coventry.gov.uk/planning> by 21 days from the date of publication.

PUBLIC NOTICES

ENVIRONMENT AGENCY Water Resources Act 1991 (as amended by the Water Act 2003) Notice of application for a full licence to abstract (take) water

Coventry Golf Club Limited (THE) has applied to the Environment Agency for a licence. The Environment Agency is giving notice of this application, in accordance with Section 37 of the Water Resources Act 1991 and Regulation 6 of the Water Resources (Abstraction and Impounding) Regulations 2006.

The application is for a full licence to abstract water from the River Soave at National Grid Reference SP 33947 74710.

The application is to abstract water as follows:
• 19 cubic metres an hour • 150 cubic metres a day • 27,300 cubic metres a year • between April and September inclusive in each year.

The water will be used for spray irrigation storage. Please contact us via email or use the number below to arrange to see the application documents.

Send any representation about this application in writing, quoting the name of the applicant and reference number NPS/WR/045918 to the Environment Agency, at the Permitting and Support Centre, Water Resources Team, Quadrant 2, 99 Parkway Avenue, Sheffield S9 4NF or by email to PSC-WaterResources@environment-agency.gov.uk by 4th May 2026. For advice about how to make a representation call 03708 506 506.

PUBLIC NOTICES

JOHN STEPHEN HUME (Deceased)

Pursuant to the Trustee Act 1925 anyone having a claim against or an interest in the Estate of the deceased late of Castle Brook Care Home, Common Lane, Kenilworth CV8 2EQ, who died on 21/06/2023, must send written particulars to the address below by 09/07/2026, after which date the Estate will be distributed having regard only to claims and interests notified.

Wilson Solicitors LLP
Alexandra House, St John's Street, Salisbury SP1 2SB
Ref: SCC70837.0028

PAMELA KATHLEEN RICHARDS Deceased

Pursuant to the Trustee Act 1925 anyone having a claim against or an interest in the Estate of the deceased late of Castle Brook Care Home, Common Lane, Kenilworth CV8 2EQ, who died on 21/06/2023, must send written particulars to the address below by 09/07/2026, after which date the Estate will be distributed having regard only to claims and interests notified.

Wilson Solicitors LLP
Alexandra House, St John's Street, Salisbury SP1 2SB
Ref: SCC70837.0028



PUBLIC NOTICES

Keeping you up to date with all the latest information on
Planning Proposals, Traffic Notices,
Goods Vehicle Operator Licences,
Licences To Sell Alcohol,
Probate Notices....

Classified

TELEPHONE 01527 588688 FACSIMILE 01527 584371

SALES & WANTS

MISCELLANEOUS

BEDS NEW Doubles £95 Singles £59 King size £159. Second hand doubles £49 Singles £29 Fridges £49 Freezers £59 Can deliver 07703 925662

RECLINER CHAIR electric rise & recline £169 Manual recline chair £60 High seated chair £40 Can deliver 07703 925662

SEVEN Bags mixed clothing - Ladies, Gentleman's and Children's clothing - suitable for Car boot - £10 per bag. Tel: 0121 474 6174

RILEY 1.5 radiator grill excellent condition £30 all offers considered 0121 744 7579

PAIR Zenith 10 x 15 binoculars in leather case £30 all offers considered 0121 744 7579

ILFORD Sporti 4 camera excellent condition in leather case £10 0121 744 7579

AS new pressure for fence painting etc 0120 0121 744 7579

OVER 20 Hornby train & accessories which need renovating hence price £20 the lot 0121 744 7579

TWO M&S Strong grey rattan, round shaped chairs, solid wood frame, ex cond. for inside or out. Bought for £170 each, sell for £50 each. Tel: 07704640907

RUNNER BEAN Plants, £2. a tray of 12 plants 8 ft x 16 / 18mm canes 75p. 01905 778926

MAMAS & Papas, large rocking horse on wooden frame. Very good clean condition (collection only) £45.00 Tel: 07934132759

ROLAND Cartier leather shoes with mesh inserts, peep toe, stiletto heel, colour pewter, size 8. Still in box Worn once indoors. Excellent condition. Original cost was £65.00 Will accept £15.00 Tel: 07934132759

WILLOW Tree Demdaco "Thank You" plaque by Susan Lordi. In original box. £3.00 Tel: 07934132759

WANTED

****WANTED: Vinyl Records CDs Cassettes Vintage or New****
Seeking classic rock, jazz, indie and rare finds. Cash paid
Call or text: 07765 142354 Or 01527 893992
Or email: welston@live.com
Paul (Albatross & Doomed Records)

MISCELLANEOUS

17 rung aluminium double ladders £50 excellent condition 07864037112

DENON DRA-F107 DAB Stereo Receiver, DCD-F107 CD Player, Speakers and User Manual - £120 07871159366

VINTAGE Pioneer Turntable PL-Z93 £20 Tel 07871159366

COFFEE Machine Nescafe Dolce Gusto GWO £20 07743929558

QUALCAST Lawnmower with grass box GWO £20 07743929558

FOUR matching ceiling lights with three bulbs £15 ono 07764850808 Text only

STANDING lamp with three bulbs matching ceiling lights £30 ono 07764850808 Text only

TABLE lamp with two bulbs matching ceiling lights £10 ono 07764850808 Text only

MIRROR 40" x 25.5" £15 ono 07764850808 Text only

WHEELCHAIR with hand breaks on push handles like new, had little use £60. Kidderminster 07518902804

7 bags of mixed clothing suitable for car boot sale £10 each 0121 474 6174

QUALCAST Rotary Lawnmower - good working order £20 07743929558

NESCAFE Dolce Gusto Coffee machine with pods (used) £20 07743929558

SPEAR & Jackson Cordless Grass Trimmer with battery + charger £55 07767847271 Stratford on Avon

3 draw fridge freezer £55 07355688601

2 draw fridge freezer £50 07355688601

2 built in CD freeview built in TV's £30 each 07355688601

LEATHER swing desk chair £20 07355688601

TV & DVD stand £50 ono 01527 833604

SHOPA BIKE, serviced £50 ono 01527 833604

SERVICES

CONSERVATORIES & GLAZING

DOUBLE GLAZING REPAIRS

Locks, Hinges, Handles, Glass, Windows or Doors
New Doors/Windows
Also Supplied/Fitted
07973 200 623

DRIVEWAYS

COVENTRY DRIVEWAYS

- Block paving • Slabs • Porcelain Tiles & Sandstone Kits
- Fencing • Gravel • Turf & Artificial Grass
- Decking, Steps and more

7 Years Warranty on all projects
Payment only after completion
02476 274439 07740 101227
www.spanglefish.com/coventrydriveways

HOME IMPROVEMENTS

HANDY MAN

If you're looking for a fast and reliable service

Then call Lenny

- Plastering • Plumbing • Fencing
- Gardening • Flooring • Kitchens
- Bathrooms • Carpentry • Flat pack furniture
- Tiling • Painting

02476 443 996
07794 784 266

NO VAT CHARGE

KITCHENS

S.W INSTALLATIONS

Kitchens & Bathrooms

FREE DESIGN & QUOTATION
QUALITY KITCHENS & BATHROOMS SUPPLIED & FITTED

PLUMBING, CARPENTRY, TILING, WORKTOP & DOOR REPLACEMENT
(Supply & fit, supply only or fit only)

LOCAL TRADESMAN
20YRS EXPERIENCE
NO JOB TOO SMALL
07971 684 353

LOGS

LOGS FOR SALE

Mainly Ash

£120, £220, £390 loads delivered

Builders bag of logs £120 delivered

Card, cash or cheque payments taken

Tel 07477 778536 or 07983 441818

See load sizes at our website
www.rbtimber.uk



NEED HELP FROM A LOCAL EXPERT?
Our Classified pages are full of LOCAL BUSINESSES waiting to help!
Give them a call!

Check out our E-Editions!

Coventry Observer .co.uk
Upgraded route set to improve



Windows Plus
Windows • Doors • Conservatories • Porches • Fascias & Sillias
02476 201222
www.windows-plus.co.uk

Rugby & Lutterworth Observer
Izzy di her to



DRIVES
Are you looking for your driveway?
Tel: 0800 303259 | Mob: 07773 911552 | www.drives-ru.co.uk

Leamington Observer
Homes to a re



DRIVES
Are you looking for your driveway?
Tel: 0800 303259 | Mob: 07773 911552 | www.drives-ru.co.uk

www.coventryobserver.co.uk/editions
www.rugbyobserver.co.uk/editions
www.leamingtonobserver.co.uk/editions

The same paper you love on your **mobile, tablet and computer**

Cov beaten by late Pirates try in penultimate fixture

RUGBY UNION: COVENTRY Rugby conceded a late try in a narrow 29-24 defeat against Cornish Pirates in the club's penultimate game of the season. Tries from David Opoku-Fordjour, Eliot Salt and Murray Davidson, along with nine points from the kicking tee, put Alex Rae's side on the brink of victory at Mennaye Field.

However, the Pirates crossed for a bonus point try four minutes from time to snatch the points in a closely-fought contest.

And the result means Coventry sit third in the Champ Rugby table just two points ahead of Worcester Warriors with one game left to play.

The Pirates scored the game's first try after just three minutes as Matt Cannon forced his way over in the corner following a catch and drive and Arwel Robson converted.

However, Coventry responded on nine minutes when Opoku-Fordjour chased his own grubber kick to touch down and Tommy Mathews added the extras.

The visitors then lost Matt Johnson to the sin-bin and

Cornish made the most of the extra man on 28 minutes as Morgan Nelson finished from a driving maul at a lineout.

Coventry reduced the deficit when Mathews kicked a penalty from range only for Harry Yates to score the home side's third try on 33 minutes with a score out wide following a handling error.

Robson's conversion sent Coventry into the break facing a nine-point deficit before Salt powered over on 57 minutes and Mathews converted.

And Coventry took the lead on 64 minutes when Davidson finished at the back of a dominant driving maul and Josh Thomas added the extras.

However, Charlie Rice forced his way over on 76 minutes as Robson's conversion put the home side back in front.

And Robson kicked a late penalty to take the game out of Coventry's reach as the visitors came away with a losing bonus point for their efforts.

Coventry finish the season with a home game against Worcester on Saturday, May 9 with kick-off at 3pm at the Nick Newbold Stadium.

Dunn at the double as United promoted after dramatic final

Coventry United celebrate after clinching promotion.



by Aaron Sutcliffe
aaron.sutcliffe@bullivantmedia.com

FOOTBALL: CAMERON Dunn scored a brace in extra time as Coventry United clinched promotion with a dramatic 2-0 win against Atherstone Town in the play-off final.

With neither side able to break the deadlock in regulation time, Dunn struck twice in the extra period to seal promotion for the Red and Greens at Butts Park Arena.

Dunn opened the scoring three

minutes into the extra period when he pounced on a loose ball to finish from close range.

And Dunn doubled United's lead in stoppage time at the end of the first extra period with a stunning strike into the top-left corner from 25-yards out.

Coventry had home advantage in the final as league runners-up while Atherstone finished one place below United in the United Counties League Premier Division South table.

United will play at Step Four for the first time in the club's history next season and boss Terry

Anderson could not hide his delight after guiding the club to promotion.

Anderson said: "I'm absolutely over the moon.

"We've worked so many years and been so unlucky, other teams have been better than us on the day.

"But we were better than Atherstone on the day and we've won and gone up.

"The two best sides were in the final and we've come out on top.

"It means everything to everyone. The lads have come in and wanted to win from day dot."

Assistant boss Luke Morton added: "Everyone was nervous during the game. It wasn't even a game, it was just a battle.

"I don't even know what happened during the game, we got through the game and then Dunny scored two.

"Me and Terry, 10 years we've worked at this, we felt it was our time.

"No one is going to remember what happened during the game.

"We've won, we've done it and we deserved it.

"The fans have been through a lot, the club nearly went under at one stage, the fans deserve it."

United also reached the quarter-finals of the FA Vase this season as the club enjoyed a memorable 2025/26 campaign.

Ingram on the podium despite difficult first weekend in BTCC



Tom Ingram on the podium. Picture by Darren Price.

take some risks but also knowing I couldn't afford another non-score after losing so many points earlier in the day, meaning it was imperative to avoid doing anything reckless or getting caught up in any incidents.

"The car felt phenomenal and I was really pumped-up, and it was full-on the whole way through.

"I left absolutely nothing on the table - I don't think I've ever given the tyres such a hard workout before and I probably came perilously close to picking up a track limits penalty, but I just had to keep cracking on.

"I used the boost where I needed to and picked my battles, and while I ultimately lost too much time fighting through the pack to be able to challenge for the win, I thoroughly enjoyed myself.

"It was a fairly tricky weekend overall - being so fast and winning two races on the road but not getting to keep either of them was a hard pill to swallow - but to end it back on the podium was positive.

"We'll also be in a fairly decent position TT-wise now going to Brands Hatch, where we'll look to secure the kind of results we should have come away with from Donington Park."

Defending champion Ingram endured a frustrating start to his title defence with the driver disqualified from the first race.

Ingram thought he had made the perfect start to the season when crossing the line in first place.

However, Ingram received a post-race disqualification with his car deemed to have a significant over-boost.

And Ingram did not start the second race after his car suffered from an alternator failure.

However, Ingram showed his champion mentality to finish second in the final race of the weekend to secure a first podium finish of the season.

Ingram finished on the podium despite starting the race from the very back of the grid.

The BTCC season continues at Brands Hatch on the weekend of May 9 and 10.

BTCC: TOM Ingram produced a superb recovery drive to claim a podium finish in the first round of the British Touring Car Championship (BTCC) season.

Ingram recovered from a disqualification in race one and an alternator failure in race two to finish second in the final race of the weekend at Donington Park.

Driving for Droitwich-based Team Vertu, the Coventry driver finished just ahead of teammate Ricky Collard.

Ingram won the BTCC title in 2025 but endured a frustrating first weekend of the season as he attempts to retain his crown.

Ingram said: "The start of a new season is always really exciting, and I arrived at Donington feeling very relaxed.

"We had to try to recover whatever we could from race three to make sure we got something out of the weekend.

"It was hard work, starting so far back and knowing I needed to

Sky Blues goalkeeper Rushworth wins Golden Glove and trio of club awards

COVENTRY City goalkeeper Carl Rushworth has won the Championship's Golden Glove award after recording the most clean sheets this season.

Rushworth recorded his 17th shutout of the season on the final day of the 2025/26 campaign as Coventry romped to a 4-0 victory at Watford.

The loanee pipped Ipswich's Christian Walton to the award after the latter recorded 16 clean sheets across the campaign.

Rushworth said: "It's an honour to win the Golden Glove award and something I'm really proud of.

"It's obviously a real team effort and the lads in front of me have been phenomenal so I would like to give them, and all the staff here, a shoutout for all their support.

"We've had an unbelievable season as a team and it's one that will live long in the memory."

On loan at the Sky Blues from Brighton and Hove Albion, Coventry recently expressed their interest in signing Rushworth on a permanent deal.

Fellow Coventry goalkeeper Ben Wilson won the Golden Glove award at the end of the 2022/23 campaign after recording 20 clean sheets.

Rushworth also scooped three awards at the club's end-of-season presentation night in a clean sweep.

The 24-year-old picked up the player of the season, young player of the season and players' player

Carl Rushworth recorded 17 clean sheets for Coventry in the Championship this season. Picture by Izzy Brider/Sky Bet.



of the season prizes.

Sky Blues supporters voted Rushworth as the club's player of the season in a memorable campaign for the on-loan goalkeeper.

Forward Haji Wright collected the top goalscorer prize after finishing on 17 league goals and 18 in all competitions.

And fellow striker Ellis Simms

won the goal of the season award for his strike away at Middlesbrough back in November.

Simms opened the scoring with a stunning effort as he curled a shot into the top corner to silence the Riverside Stadium.

And defender Kaine Kesler-Hayden won the club's community player of the season prize.

CRS LTD
Spring Lane South, Malvern WR14 1AT
ATF's are the **ONLY** legal way to scrap your vehicles
BUYERS
of all SCRAP Metals and SCRAP Vehicles
The **ONLY** authorised treatment facility in Malvern!
Best Prices Paid • Collection & Skip Drops Farm
Equipment, Copper, Brass etc. • 50 Ton Weigh Bridge
ID REQUIRED - 01684 578081
www.crs-malvern.co.uk

Observer SPORT



9 772040 128006
Published by Bullivant Media Group Ltd, Webb House,
Church Green East, Redditch, Worcestershire, B96 8BP
Printed by Newsquest, Newspaper House, Osney
Mead, Oxford, Oxfordshire, OX2 0EJ

VINYL RECORDS WANTED
Buying since 1978
Get your cash TODAY!
I will come to you
Phone PAUL
01527 893992 | 07765 142354

www.rugbyobserver.co.uk

BRINGING YOU **ALL THE LATEST** SPORTS NEWS AND VIEWS FROM THE AREA

Relegated Valley determined to make quick return to Step Four

FOOTBALL: RUGBY Town's board of directors have released an end-of-season message following the club's relegation from the Northern Premier League Midlands.

Valley finished bottom of the NPL Midlands table to suffer a second successive relegation after a reprieve saved Rugby from the drop at the end of the 2024/25 campaign.

The club have confirmed boss Grant Joshua will remain in his role as manager for the 2026/27 season despite Rugby ending the season with a run of 15 games without a win.

And Rugby hope to use the club's latest relegation as a reset with Valley determined to return to the Northern Premier League as soon as possible.

The club said via a statement: "Now the season has concluded we can reflect fully on what has been a very disap-

pointing outcome following a difficult second half of the campaign.

"As a board we take responsibility for that outcome - this is not where we expected or wanted the club to be and ultimately the responsibility for setting the direction, structure and environment to succeed on the field sits with us.

"After last season's late reprieve, it is also fair to say that we did not make the most of that opportunity. That reprieve brought its own challenges as it came at a point where we had already begun preparing a squad for Step Five with a new manager in place.

"There is no single reason for our downturn in form with a mixture of mistakes and moments of bad luck leading to too much disruption across the season.

"Looking forward now, I want to confirm that Grant Joshua will remain

as manager.

"Grant joined the club 12 months ago with the objective of building a side capable of winning promotion from Step Five and that objective is now exactly the same going into next season.

"It has been a challenging season for Grant and his staff. Ideally, this would have been a year where adversity provided learning while still achieving survival. Instead, it has been a much harsher experience for everyone involved.

"That said, the attitude, work rate and the relationship that has been built with Grant over the past year are exactly why we are continuing with him.

"We believe he is a talented manager with the ability to build a strong, competitive side, and he will have our full support in doing so.

"There is an opportunity here to reset



Rugby Town suffered relegation this season. Picture courtesy of Rugby Town FC.

after three challenging seasons at Step Four and our focus is on using that reset in the right way to build something stronger and more sustainable in terms of success on the field.

"Our aim is clear. To return to the NPL as quickly as possible while delivering a standard of football that reflects the size of the club and the expectations of our supporters."

CASHBROKERS

LEAMINGTON SPA

PAWNBROKING LOANS
SCRAP GOLD & SILVER
BUY BACK
JEWELLERY & WATCHES
COINS & BULLION

CASH PAID
FOR GOLD, SILVER,
COINS & BULLION



01926 258252

144 Parade, Leamington Spa, CV32 4AG

www.cashbrokersleamingtonspa.co.uk

