

**WANTED**  
**Motorcycles and Scooters**  
 Any cc, condition or age,  
 good prices paid  
 07944 781 933 | 01926 257 643

# Rugby man sent down for child sex offences

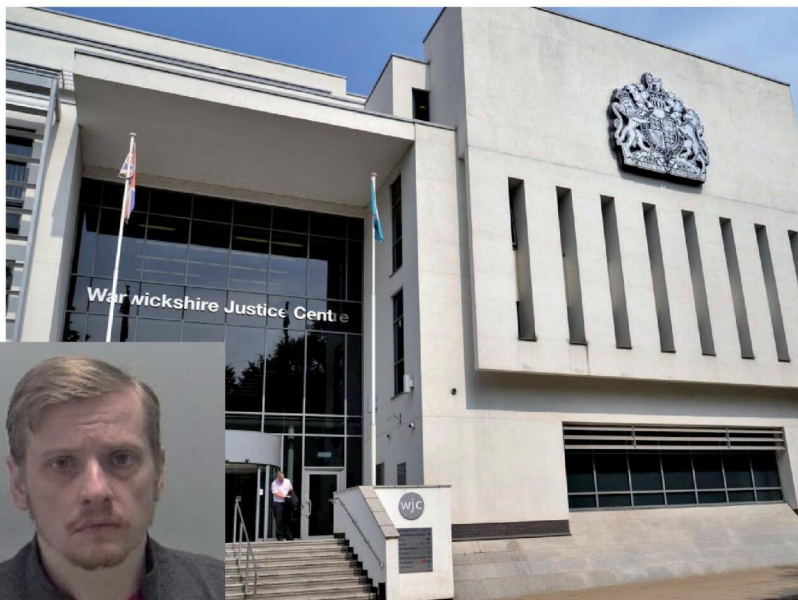
by **Andy Morris**  
 andy.morris@bullivantmedia.com

A 'DANGEROUS' child sex offender from Rugby who talked online about abusing children and babies has been jailed for more than a decade, after he confessed to multiple crimes.

Christopher Trezise, 46, pleaded guilty to a number of offences, including arranging/facilitating the commission of the sexual assault of a child, making and distributing indecent photographs of children, possessing extreme pornographic imagery, and engaging in sexual communication with a child.

At Warwick Crown Court, Trezise was jailed for ten years and six months, given an extended licence period of four years having been identified as a dangerous offender by the courts, handed a Sexual Harm Prevention Order (SHPO) for 15 years, and ordered to sign the Sex Offenders' Register for life.

Trezise was arrested in May 2024 and his devices were seized after work by Warwickshire Police's Online Child Sexual Exploitation Team (OCSET) found he had been potentially distributing inde-



'Dangerous' child sex offender Christopher Trezise (LEFT) has been for ten years and six months at Warwick Crown Court.

cent images online.

Subsequent forensic analysis revealed Trezise was an active member of online networks and forums, and regularly talked about abusing children and babies.

Police also discovered he had more than 1,000 illegal images on his devices, and he had been sexually communicating with a child as well as arranging to meet an offender to sexually abuse another child.

Investigating officer Det Sgt Jag Gill said: "Trezise is a prolific offender who thought the anonymity of the internet would mask the despicable level of his offending."

"The extreme level of content recovered from his devices was horrendous, and demonstrated a clear pattern of repeated and intentional behaviour, and this severity was reflected in the length of his sentence."

"Our focus is the safety of children and the needs of victims. We will relentlessly pursue suspects like Trezise and anyone who uses the internet to groom, coerce, threaten, exploit or share abusive material involving children - working with partners and using all available investigative powers to bring offenders to justice."

Anyone with concerns about their use of the internet or inappropriate thoughts or behaviour about children, or who is worried about someone they know, can contact the Lucy Faithfull Foundation at [www.lucyfaithfull.org.uk](http://www.lucyfaithfull.org.uk).



**Tel: 0800 3032559**  
**Mob: 07773 911552**  
[www.drives4u.co.uk](http://www.drives4u.co.uk)

**Are you looking to improve or enlarge your driveway or patio?**

We can provide you with a beautiful new patio or driveway in **Coventry, Bromsgrove, Redditch, Solihull, Leamington, Kidderminster and Birmingham**

**5 Year guarantee**

- We've designed and built just about every shape and size of driveway and patio you can imagine, so we will not be phased by your project.
- We strive to achieve 100% satisfaction and unlike other driveway companies, with us you pay absolutely nothing upfront.
- Give us a call and you could save upto £1000

**Tel: 0800 3032559 | Mob: 07773 911552 | [www.drives4u.co.uk](http://www.drives4u.co.uk)**

# Project's year of real difference

A THRIVING green space project which has turned a neglected site in Coventry into a thriving community hub has marked its first anniversary.

The People's Patch, run by Groundwork West Midlands, has brought together community volunteers and stakeholders to create a space for people to connect with others and nature, and boost neighbourhood pride, wellbeing and biodiversity.

Over the past 12 months, the formerly overgrown site next to the Alan Higgs Centre has become a popular community resource used weekly by different groups and people of all ages and abilities.

Mary Creagh, Minister for Nature and Coventry East MP, attended the birthday celebration.

Speaking at the event, she said: "Planting, growing and being in nature bring us together at the heart."

"The People's Patch is a brilliant example of how we can all do our bit so the community can benefit, like the brilliant volunteers have done at the People's Patch. Whether picking litter, leaving a bit of our garden messy to shelter wildlife, or revitalising a neglected area, we can all do something."

"We all love nature, we all love this city. We can all celebrate that through these countless acts of small



Left to right: Jyan Dutton (Community and Environment Project Officer from Groundwork West Midlands), Mary Creagh MP, volunteers Julie, Amrinder and Keith, and Colette Sharp from People's Patch partner SEGRO.

kindness and love to help ensure this place thrives well into the future."

Jo Elward, Business Development Manager at Groundwork West Midlands, said the anniversary was a real milestone for everyone

involved. She added: "We've seen the space flourish into a welcoming and inclusive hub, and it's been incredibly rewarding to witness the difference it has made for volunteers and the

wider Coventry community. "The positive impact continues to extend well beyond the garden, strengthening connections, wellbeing, and community pride."

Keith, who has been volunteer-

ing at The People's Patch since last September, said he enjoyed using his skills to build things and collaborate with different people.

He added: "Volunteering at The People's Patch has given me the chance to make a difference and give something back to my local community. Whether it's clearing pathways or developing a pond, it has been a pleasure to see The People's Patch flourish."

"Volunteering is a great opportunity for people to use their skills and put them to good use. I'd encourage more people to get out there and volunteer and make a meaningful difference."

The People's Patch is part of a national network of Groundwork Green Community Hubs – community assets that make nature accessible for everyone while also providing social services like educational workshops, health and housing support.

Visit <https://www.groundwork.org.uk/green-community-hubs/> for more information.

As recommended on [Daynurseries.co.uk](http://Daynurseries.co.uk), please visit to see what our parents say

## Quality Care and Education

Providing a fully inclusive service for families with children aged 6 weeks to 5 years from 7.30am to 6.30pm

If you are a working parent you could be eligible for 30 hours a week of free childcare.

At Emscote House the warm and welcoming environment ensures that your child's individual needs are prioritised, and their interests nurtured.

**Emscote House**  
Day Nursery and Preschool

T: 01926 425067  
E: [emscote.house@childbase.com](mailto:emscote.house@childbase.com)

Emscote House Day Nursery and Preschool, 46 Warwick Place, Leamington Spa, Warwickshire CV32 5DE

Now taking registrations  
We'd love to show you around

Scan me for full nursery details

Ofsted Good Provider

## PlumbFix Solutions

### LOCAL PLUMBING YOU CAN RELY ON!

PROUD TO SERVE OUR LOCAL COMMUNITY

- EMERGENCY PLUMBING
- PLUMBING & HEATING
- CCTV & DRAIN JETTING
- REPAIRS & MAINTENANCE
- HOME CARE PLANS

WE'RE JUST A CALL AWAY!

MOBILE: 07415 066 381 | LANDLINE: 01527 332 488

RELIABLE SERVICE | FRIENDLY EXPERTS | LOCAL PLUMBERS

[Info@PlumbFixSolutions.co.uk](mailto:Info@PlumbFixSolutions.co.uk) | [www.PlumbFixSolutions.co.uk](http://www.PlumbFixSolutions.co.uk)

## PUBLIC NOTICES

For all your latest information on Planning Proposals, Traffic Notices, Goods Vehicle Operator Licences, Licences To Sell Alcohol and Probate Notices...

See page 29

Discussions at the town hall are ongoing, to determine the leadership of Rugby Borough Council.



# Lab-Lib Dems in the box seat

by **Andy Morris**  
andy.morris@bullivantmedia.com

## RUGBY Borough Council remains under no overall control following the local elections.

The Labour group, which had led the council with support from the Liberal Democrats, lost three seats to Reform UK – one in Admirals and Cawston, previously occupied by outgoing council leader Michael Moran, who decided not to run in this year's election; one from cabinet member Alison Livesey, in Coton and Boughton Ward; and one in Newbold and Brownsover.

Due to a by-election, there were two seats available in Bilton – both gained by the Liberal Democrats at

the expense of the Conservatives.

A third of the council seats – 15 out of 42 – were up for grabs.

The Conservatives remain the largest party, with 15 councillors.

Labour and the Liberal Democrats each have 12 councillors with Reform on three.

Turnout in Rugby was 42.24 per cent, well above the 2015-2025 local election average of 30-35 per cent.

By 2028, the government plans to scrap the six councils in Warwickshire and replace them with either one or two larger, single-tier authorities – meaning councillors elected in Rugby last week will not serve full four-year terms.

A Conservative group spokesperson thanked those in the borough who voted for the party.

They added: "Our candidates and

councillors who were re-elected will work tirelessly for you and your community at Rugby Borough Council.

"Rugby's Conservative councillors will continue to champion your priorities until Rugby Borough Council is abolished by the government."

Since 2024, Labour has led the council in a minority administration backed by the Liberal Democrats.

The two parties' combined 24 seats would be enough to form a new administration as the Conservatives and Reform can only muster 18 between them – four short of the number required for an overall majority.

The Labour group has appointed councillor Louise Robinson as its new leader and Coun Maggie O'Rourke as deputy.

Coun Robinson said: "Thank you

to those councillors for their trust and confidence in me as their new leader.

"Over the coming days, there will be discussions about how the council moves forward. What matters most is that Rugby has stability, respectful politics and councillors who work together in the interests of local people."

Liberal Democrat group leader, Coun Jerry Roodhouse, said the impending changes to local government meant it was time to "unite for the future of Rugby", rather than "play party political games".

He added: "We will continue to fight for improved health access, acceleration of town centre regeneration and stronger support for our local businesses."

"We also want to work more closely with parish councils and

create a town council, to secure a strong future and lasting legacy for Rugby. The council now needs to step up, move faster and focus on delivering for residents. Our hope is that all political groups can work together for the sake of our communities and residents."

A Reform group spokesperson said: "Our new councillors are ready to make their presence felt and start to make a difference for their local neighbourhoods and across Rugby borough."

"It's time now for action, not words. Good luck to our new councillors and we will be back next year more determined to make Rugby a place we are all proud to call home."

Visit [www.rugby.gov.uk/pl/w/2026-elections](http://www.rugby.gov.uk/pl/w/2026-elections) for detailed results.



**Corin Crane, chief executive of the Coventry and Warwickshire Chamber of Commerce: 'It's vitally important that, throughout this period, businesses get the support they need.'**

## 'Help business to boost the wider economy'

A LEADING industry figure in Coventry and Warwickshire says councillors across the region must do all they can to support local business and wider economic growth, during times of uncertainty.

Corin Crane, chief executive of the Coventry and Warwickshire Chamber of Commerce, paid tribute to councillors who lost their seats while congratulating those who were successful at local elections in Coventry and Rugby Borough.

He said businesses need stable foundations from which to grow, amid changes at a regional level.

Colin said: "Congratulations to all of the new councillors on our patch. My first message to all of them is that our door is always open, at the chamber, if they want to come and talk to us about any issues concerning business and how we can foster economic growth."

"The region is full of proud and passionate businesses and individuals who are all striving to make this a great place to live, work and do business."

"So it's vitally important that we tap into that energy for the good of the whole region."

Colin encouraged councillors from all parties to engage with the apolitical chamber and thanked outgoing councillors for their service.

He added: "We know that these are uncertain times, from a global point of view, and the region is set for significant changes too, due to local government reorganisation, which will see our borough- and district councils disappear."

"It's vitally important that, throughout this period, businesses get the support they need but also that they understand where to go when it comes to decision-making."

"There is also the big question about where and how Warwickshire will fit into the combined authority, because that is such an important driver for investment and growth."

"We'll take party politics out of the equation and seek to ensure that we place the interests of local employers at the heart of the conversation as we continue to listen to our members' views through our quarterly economic survey [QES] and at in-person events."

Visit <https://tinyurl.com/h9t99fkw> to take part in the latest QES.

For more information, or to book, please call **03332 342 514** Quote **OSG**

**just go.holidays** ★ ★ ★ ★ ★ **Trustpilot**

Reader Travel



**Andrea Bocelli Live in Tuscany**  
Departing **Mon 20 Jul '26**


Don't miss the chance to see the world's most famous tenor, Andrea Bocelli, perform in his hometown of Lajatico this July.

**SO MUCH INCLUDED...**

- ✓ Return coach travel & ferry crossings **from Rugby, Coventry**
- ✓ First & last night at the Selected Hotel, Tuscany, Italy (JG3+ rating)
- ✓ Additional overnight stay on outward & return journey on a half-board basis in Grenoble
- ✓ 5 nights at a selected hotel in Tuscany (JG3+ or JG4 rating) with dinner & breakfast
- ✓ Welcome drink & fruit & water in room on arrival (Italy hotel only)
- ✓ Portage where available
- ✓ Concert ticket for Andrea Bocelli at the Teatro del Silenzio
- ✓ Excursion to Pisa & Lucca
- ✓ En-route visits to Macon & Beaune

**10 Days by Coach only £1499**  
Single Supplement £450

These packages are subject to Just Go! Holidays terms & conditions. Coach bookings are protected by Banded Coach Holidays & the Association of Banded Travel Organisers (ABTO). All holidays are ATOL protected No. 10899. Prices are per person, based on two people sharing a room & honours on bookings made up to 7 days prior publication, after which prices may fluctuate. Choices of date, hotel, airport or pick up location may incur a supplement. Please see website or call for full details.



**Scenic Cumbria & the Lovely Lake District**  
Departing **Thu 25 Jun '26**

Come and experience the Lovely Lake District with excursions to idyllic towns, a nostalgic heritage railway, a Lake Windermere cruise as well as entrance to the magical World of Beatrix Potter Attraction.

**SO MUCH INCLUDED...**

- ✓ Return coach travel **from Rugby, Coventry**
- ✓ 4 nights at the Holiday Inn Express, Barrow-in-Furness (JG3 rating) with dinner & breakfast
- ✓ Heritage train journey
- ✓ Cruise on Lake Windermere
- ✓ Scenic drive through Cumbria
- ✓ Excursions to Bowness-on-Windermere, the World of Beatrix Potter Attraction, Ulverston, Grasmere, Kendal

**▶ SAVE £30 - Quote OSG**  
**- Book by 29 May 2026**

**5 Days by Coach only £449**  
Single Supplement £140

Visit us online at [justgoholidays.com/OSG](http://justgoholidays.com/OSG)

**033 numbers are free within inclusive minutes packages otherwise standard rates apply.**

## Making his pitch

A CHARITY walker who is heading out on a 250-mile trek is looking for a safe place to sleep when he passes through Rugby.

In July, Mark Willis and his dog Nina will take on the 23-day, 250-mile 'Kindness Amble for Canals, Cats and Canines'.

The 59-year-old's ambitious circular route, starting and ending in Worcester, will take him through Warwickshire, with a crucial overnight stop planned in Newbold-on-Avon.

Having already raised more than £1,400 for Battersea Dogs & Cats Home and the Canal & River Trust, Mark is now relying on what he calls the "kindness of the towpath".

Rather than staying in hotels, Mark will be carrying his own gear, pushing Nina the entire way in a customised pushchair and camping along the route.

Mark is appealing to canal-side pubs, farmers and kind-hearted residents in Newbold to provide him with a small, safe patch of grass to pitch his tent for the night and rest his feet before continuing his trek.

Email Mark at [mark@surplex.co.uk](mailto:mark@surplex.co.uk) to offer help. Visit [www.surplex.co.uk/donate](http://www.surplex.co.uk/donate), to sponsor Mark.



# MP hails start of work to repair leaking pipes

John Slinger MP has welcomed the start of repair work to faulty water infrastructure in Grasmere Close. s

by **Andy Morris**  
[andy.morris@bullivantmedia.com](mailto:andy.morris@bullivantmedia.com)

**IN A "win for the community", long-awaited repairs to water pipes in Rugby are now under way, following years of flooding issues.**

Severn Trent Water has started work to repair faulty water infrastructure in Grasmere Close

Frustrated residents who had dealt with repeated floods in the area – sometimes in their homes – complained to Rugby MP John Slinger. He held a public meeting, wrote a public letter to the chief executive of Severn Trent Water and raised the issue on the floor of the House of Commons.

In turn, Severn Trent has committed to invest £850,000 to replace old supply pipes in the area to reduce leaks and bursts.

Mr Slinger welcomed the start of the works, and has described the visible progress of the project as an important milestone for the community.

He said: "I've heard, first-hand from residents, about the anxiety and upheaval caused by these repeated flooding incidents.

"Residents had long raised concerns about ongoing flooding from burst water pipes and a lack of clear action from Severn Trent Water. Some have suffered repeated internal flooding.

"I'm pleased that my intervention has helped break the deadlock and that the repair work has finally commenced. This is

a welcome step from Severn Trent and it is a significant step forward.

"Through engaging constituents at surgeries, public meetings and letters, I believe we have jointly secured a win for our community – we can be proud of ourselves.

"This shows what can be achieved when we work collaboratively to address local concerns. However, [Severn Trent] can be under no illusion: they are very much in the spotlight. I won't hesitate to escalate these concerns further with my ministerial colleagues if needed.

"With construction now visibly in progress, the focus will shift to how effectively the repairs prevent future flooding and restore confidence among the affected community."

# GOLF

**MEMBERSHIP FEES FROM AS LITTLE AS £15 PER WEEK**

**Visitors Welcome**  
Clubhouse & Catering Open to ALL  
Meeting room for Hire.  
Wakes, Family Celebrations catered for

[www.rugbygolfclub.co.uk](http://www.rugbygolfclub.co.uk)

**01788 542306**

📍 Rugby Golf Club, Clifton Road, Rugby, CV21 3RD

# County tops list on happy passengers

BUS users in Warwickshire are the most satisfied in the country.

The 2025-26 'Your Bus Journey' survey, conducted by independent watchdog Transport Focus revealed a 93 per cent overall passenger satisfaction rating.

This is the first year Warwickshire has been included in the annual survey, which gathered data over a 12-month period between February last year and this January.

The overall 93 per cent rating places Warwickshire as the highest-rated local authority area in the country, significantly outperforming the English average of 85 per cent. It included a 90 per cent punctuality satisfaction and journey time satisfaction rating - both the highest in England.

The survey captured the views of 1,000 passengers through on-board interviews and at-stop surveys at busy hubs such as Leamington Parade and Nuneaton Bus Station.

Warwickshire County Council's executive director for communities Mark Ryder said: "Considering this is the first year that the bus passenger survey has been conducted in Warwickshire, we are delighted with these results, which confirm that our commitment towards pro-

viding a high-quality bus network for Warwickshire is delivering for our residents.

"Buses are the backbone of our communities, connecting people to work, education, and essential services while reducing congestion and supporting our environmental goals. We will use this detailed insight to ensure we continue to provide an accessible, reliable, and affordable service for everyone in Warwickshire.

"It's great to see that responses came from across Warwickshire, which will help steer the ongoing investment towards improving the bus network, and is testament to the hard work of our officers and our partners at the Warwickshire Bus Enhanced Partnership."

Mark Whitelocks, managing director of Stagecoach Midlands was pleased to see Warwickshire perform so strongly.

He said: "We're specially proud of our teams who deliver these services day in, day out.

"Across Stagecoach Midlands, our drivers and colleagues work hard to keep services running on time and get people where they need to be, so it's great to see that reflected in what passengers are telling us."



Ready to hit the green - Tom Cave, Tin Birch, Simon Nicholson, pro golfer Ben Markham, Tessa Lukehurst and Roddie Grant. Picture by Marcus Mingins 1326007MMR2

## All on course to help rescuers

FUNDRAISERS are being urged to hit the green in aid of Warwickshire Search and Rescue.

A Charity Golf Day is being held at Leamington and County Golf Club on Wednesday May 27.

Businesses, organisations and residents are being called on to take part to help raise vital funds for the volunteer-led charity.

Warwickshire Search and Rescue is a team of trained volunteers who assist the police in searching for missing people across Warwickshire. Members respond day or night, often in difficult conditions, to

help bring vulnerable people home safely and provide reassurance to families during extremely distressing times.

Unlike many emergency services, Warwickshire Search and Rescue receives no direct government or statutory funding. This means it must raise all the funds required to maintain its specialist equipment, vehicles, training, and operational capability through community fundraising and the generosity of local supporters.

Visit [warksar.org.uk](http://warksar.org.uk) for more details.



**Tel: 0800 3032559**

**Mob: 07773 911552**

**[www.drives4u.co.uk](http://www.drives4u.co.uk)**

**Are you looking to improve or enlarge your driveway or patio?**

**We can provide you with a beautiful new patio or driveway in Coventry, Bromsgrove, Redditch, Kidderminster, Solihull and Birmingham**

**5 Year guarantee**

- We've designed and built just about every shape and size of driveway and patio you can imagine, so we will not be phased by your project.
- We strive to achieve 100% satisfaction and unlike other driveway companies, with us you pay absolutely nothing upfront.
- Give us a call and you could save upto £1000



**Tel: 0800 3032559 | Mob: 07773 911552 | [www.drives4u.co.uk](http://www.drives4u.co.uk)**



Houlton School students with their picks from the collection of donated books.

## Housebuilder's donation is a real success story

A NOVEL gesture – students at a Rugby primary school have a wider choice of reading material thanks to a donation of books.

Housebuilder Redrow Midlands has gifted a collection of brand-new storybooks to students at Houlton School.

The donation includes a selection of popular and much-loved children's titles, chosen to encourage a love of reading and spark creativity among pupils.

Lorna Pountney, Head of Houlton School, said: "We are incredibly grateful to Redrow Midlands for this generous donation.

"Access to high-quality books can make a

profound difference to a child's confidence, imagination and academic development.

This thoughtful contribution will not only enrich our classrooms but also help foster a genuine love of reading among our pupils."

Elaine Cartwright, Sales Director for Redrow Midlands, said: "We recognise the vital role reading plays in a child's development – building confidence, creativity and essential literacy skills.

"By donating these books, we hope to encourage a lasting enthusiasm for reading and help ensure more children have access to stories they can enjoy."

# Newest arrival may save lives

A LIFE-saving defibrillator has been installed at a Rugby cement plant, as a Rugby mum continues her campaign to make the life-saving devices available to the public in memory of her son.

The OurJay Foundation, founded by Rugby woman Naomi Rees-Issitt, has donated a new defibrillator to Cemex UK's Rugby Cement Plant.

The new defibrillator will be accessible in the event of an emergency for both Cemex staff and the wider local community nearby.

Although the plant already has multiple defibrillators in place, the new partnership with the OurJay Foundation means Cemex now has a publicly accessible defibrillator at the front of the plant which the wider community can use in an emergency.

Naomi set up the charity following the death of her 18-year-old son Jamie Rees from a cardiac arrest in the early hours of New Year's Day 2022.

Rugby woman Naomi Rees-Issitt set up the OurJay Foundation following the tragic death of her 18-year-old son Jamie Rees from a cardiac arrest in the early hours of New Year's Day 2022. Despite a defibrillator being located nearby, it was inaccessible.

Since then, the charity has installed over 350 defibrillators across Warwickshire and beyond, while raising awareness of their importance and providing training in life-saving skills.

Naomi said: "Every defibrillator installed has the potential to save lives.



"We are so grateful to Cemex for their commitment and support in helping us increase access to this vital equipment.

"The installation at Rugby Cement Plant is another important step in building a safer community in Jamie's memory."

As part of its partnership with the OurJay Foundation, Cemex UK colleagues at its Coventry Head Office took part in a range of fundraising activities, raising over £1,300 towards additional lifesaving equipment for the community – including a defibrillator to be installed at Rugby High School.

The charity has also delivered CPR and defibrillator awareness training to Cemex colleagues.

**Left to right: OurJay Foundation founder Naomi Rees-Issitt, Phil Baynes Clarke (Cemex UK Director Cement Operations) Kaydon Barker from the OurJay Foundation, and Mary-Ann Macinnes Collins (Cemex UK Regional Health and Safety Manager).**



**OFFER: MONDAY & TUESDAY | £15.95<sup>PP</sup>**  
**ANY STARTER ANY MAIN DISH\***  
**ANY NAN OR RICE & TEA OR COFFEE\*\***

\* (Fish, & King Prawns £3.00 extra per dish) | \*\* (Plain Coffee)

376 KENILWORTH ROAD, BALSALL COMMON, COVENTRY, CV7 7ER | T: 01676 533 308 | www.cafetamarinds.co.uk



ARTA AWARDS RESTAURANT OF THE YEAR 2025 WEST MIDLANDS





Left to right, top row: Steven Merrick, Sean O'Farrell, Thomas Higginson, Michael York; bottom row: Paul Meek, Peter Tomkowicz, Damien Haswell, Daniel Barlow.

# Eight more men jailed over drug supply chain in police operation

by **Andy Morris**  
andy.morris@bullivantmedia.com

A POLICE operation which uncovered drug dealing gangs operating between Leicestershire and the West Midlands has led to a further eight men being jailed.

Steven Merrick, Sean O'Farrell, Thomas Higginson, Michael York, Paul Meek, Peter Tomkowicz, Damien Haswell and Daniel Barlow were all sentenced at Leicester Crown Court to a total of 47 years imprisonment for conspiracy to supply cocaine.

The sentences follow from April 2025, when another eight men were sentenced to a total of more than 60 years imprisonment after all pleading guilty to conspiracy to supply class A drugs in relation to the same policing operation.

Evidence gathered by the East Midlands Special Operations Unit (EMSOU) during the investigation, which dates back to 2023, showed Merrick, O'Farrell and Higginson to be involved in a largely Coventry-based gang which supplied wholesale quantities of cocaine.

York, Meek, Tomkowicz, Haswell and Barlow were all found to be involved in a group based in Leicestershire, obtaining cocaine from the West Midlands-based group and then supplying this onto 'customers'.

Merrick was found to be a courier of wholesale quantities of cocaine but was also involved in street-dealing. More than \$12,000 in cash was recovered from his address.

The investigation also uncovered evidence of a meeting in Coventry in June 2023 when O'Farrell and Higginson approached a vehicle, delivering cocaine to Meek and Tomkowicz who were inside.

Meek was also found to be involved in multiple cocaine deliveries, while phone evi-

dence showed Tomkowicz as being involved in the supply of cocaine to users.

York was found to be a point of contact to provide cocaine to 'runners', trusted with access to stores of cocaine.

Haswell was found to be involved in the conspiracy on a number of dates acting as a courier, while messages showed Barlow to be involved in the collection of cash and cocaine in August 2023.

All the defendants were jailed for conspiracy to supply class A drugs.

They included Merrick, 33, formerly of Greville Road in Warwick (seven years and seven months), O'Farrell, 36, formerly of Lillington Road in Coventry (five years and three months), Higginson, 31, formerly of Henley Road in Coventry (three years and nine months), York, 34, formerly of Devitt Way in Broughton Astley (six years and three months), Meek, 40, formerly of Newlands Road in Barwell (seven years), Tomkowicz, 47, formerly of Newlands Road in Barwell (seven years), Haswell, 40, formerly of Kirkby Road in Barwell, and Barlow, 31, formerly of Borrowdale Close in Earl Shilton (five years and three months).

Det Sgt Chris Sewell of Leicestershire Police said: "Drug offending of this kind has huge impacts on our communities. We will continue to take gather information and intelligence and to take action against those who offend in this way. The people involved here believed they could freely operate without being brought to account or to face responsibility for their actions.

"My thanks do go to the investigating team involved who showed a huge amount of dedication, skill and effort in making sure that these offenders were brought before the courts.

"Please do continue to report any information you have in relation to drug offending to us to help us continue to detect these crimes and to bring those responsible to justice."

## Spring Arrives

at the garden lover's garden centre

**Harefurlong Nurseries**  
www.farnboroughgardencentre.co.uk

A traditional garden centre that focuses on providing quality plants, garden products, homeware and gifts

**national Garden Gift voucher**

**AQUATIC PLANTS**

**TUB & BASKET PLANTS**

**VEGETABLE PLANTS**

**SUMMER BEDDING**

**Treasured Teddies**  
AT  
FARNBOROUGH GARDEN CENTRE

Come & visit our Treasured Teddies shop & see our massive selection of cuddly collectables & furry friends including especially loveable limited editions and everyday huggables

**A world of Choice**

**OPEN 6 DAYS A WEEK**  
Tues-Sat 9-5.30pm  
Sun 10.30-4.30pm  
Open Bank Holiday Mondays

On A423 Southam Road,  
Nr Farnborough, Banbury, OX17 1EL  
Tel 01295 690479  
customersales@farnboroughgardencentre.co.uk

**WHERE THINGS FOR YOUR GARDEN WON'T COST YOU THE EARTH**



Author Karen Storey is up for the Romantic Novelists Association's prestigious Joan Hessayon Award. s

## Karen's prize hope

A ROMANCE author from Leamington is "thrilled" her debut novel is up for a prestigious award.

Karen Storey's *The Approval of Sheep* is a contender for the Romantic Novelists Association's (RNA) Joan Hessayon Award. The prize is for novelists who have come through the RNA's new writer's scheme and have had their debut published as a result.

*The Approval of Sheep* follows Gordon, who must convince his employers they need his help in order to keep his job. When he hears of an old covenant allowing sheep to run through their top London hotel, he ponders whether he can use this to show his boss he's the man to protect the hotel from disaster.

Inspired by a real covenant, the novel is an uplifting story about family, love and overcoming adversity.

Karen is originally from New York and has written articles for *American* in

*Britain* magazine. Karen's short stories have been placed in several international competitions and her memoir pieces published in *The New York Times*' best-selling *Chicken Soup for the Soul* series.

Karen said: 'I am thrilled to be a contender for this amazing award. I first joined the RNA in 2019. I remember attending my first event and spotting a group of authors lining up for a photograph. I was told they were up for the Joan Hessayon Award for their debut novels. I remember looking at them and thinking, 'I'd love to be one of them some day' but not truly believing it would happen for me.

"Yet, with the support of many wonderful writers within organisations like the RNA, I persevered. It's a 'pinch me' moment that I will, in a few weeks time, be with fellow debut authors, celebrating and having our group photo taken for the Joan Hessayon Award."

# Science and poetry meet

by Ian Hughes  
ian.hughes@bullivantmedia.com

## POETRY is 'in scientific motion' at the University of Warwick.

A new poetry trail, unveiled as part of the university's 60th anniversary celebrations, features 14 poems by award-winning poet and musician Sujatha Menon.

Each of the poems was inspired mainly by female researchers and technicians across the university's school of life sciences.

Sujatha spent a year-long residency as the department's first poet-in-residence, commissioned by professor emeritus Kevin Moffat. It was during this time she wrote her new collection, *Microscopia*, published by Pindrop Press.

The poems will be permanently displayed as a trail through the university's ancient bluebell woods and paths near Gibbet Hill, transforming a walk in nature into a celebration of literature, biology and wellbeing.

Professor Miriam Gifford, head of the school of life sciences, said: "Bringing these poems to life has been a process fuelled by imagination, bringing all kinds of creative ideas into both our labs and our conversations.

"The trail is a unique opportunity for the Warwick community to engage with scientific research

through the voices, stories and discoveries of female academics, technicians and researchers.

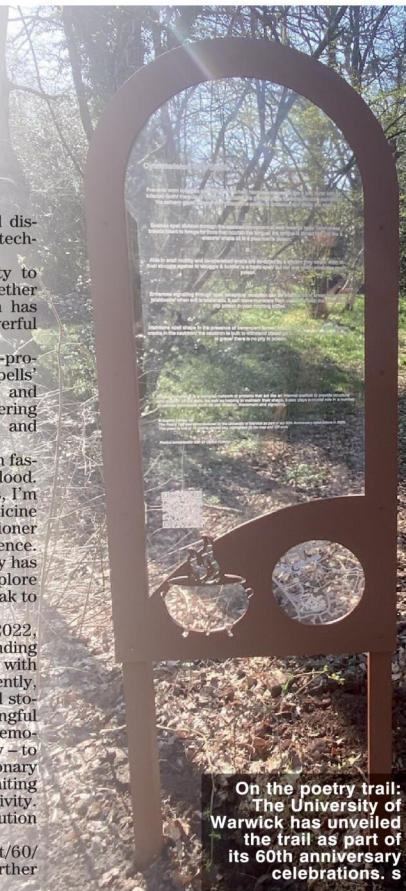
"We've loved the opportunity to bring science and art closer together on campus – the collaboration has opened our eyes to the powerful ways the two interlink."

Visitors can expect thought-provoking themes, from 'skinning spells' to 'talking in the rhizosphere' and 'hydrosapien neuropathies', offering a poetic reflection on science and the human experience.

Sujatha said: "I've always been fascinated by science – it's in my blood. I come from a family of doctors. I'm trained in complementary medicine and my work as a health practitioner has deepened my interest in science. Collaborating with the university has been a wonderful way to explore how science and poetry can speak to each other.

"As poet in residence since 2022, I've been passionate about finding new ways to engage people with research – to look at it differently, through metaphor, emotion and storytelling. It felt especially meaningful to create *Microscopia* to commemorate Warwick's 60th anniversary – to celebrate the university's visionary spirit, its commitment to igniting curiosity and embracing creativity. Warwick is more than an institution – it's a place for discovery."

Visit [warwick.ac.uk/about/60/converge-poetry-trail/](http://warwick.ac.uk/about/60/converge-poetry-trail/) for further details.



On the poetry trail: The University of Warwick has unveiled the trail as part of its 60th anniversary celebrations. s

pound for £ they are the best!

# INTERNATIONAL METALS & CABLE RECYCLING LTD

## We purchase all Ferrous and Non Ferrous Metal Batteries and Cables

Collection Service Available

Long Marston Road, Long Marston, Stratford Upon Avon, Warwickshire, CV37 8AQ

01789 721 288

info@imcr.co.uk

Open Mon/Fri - 8am - 5pm

# Taskforce working to put the brakes on offenders



West Midlands Fire Service uses a car handed over to police by the courts, for training, s

A POLICE taskforce which tackles illegal street racing across the region has accelerated to 100 convictions.

Since January 2025 Op Hercules at West Midlands Police have successfully taken to court and convicted motorists for road offences including dangerous driving.

And there are 60 more cases waiting on a first appearance in court or trial.

As well as several prison sentences offenders have also been convicted to 676 weeks suspended sentences and have been banned from the roads for 818 months.

A total of 219 points has been racked up and fines have totalled £37,446.

Offenders have had to carry out 377 days of rehabilitation activity as well as 3,550 hours of unpaid work in the community.

There have also been 350 motorists reported to the Central Ticket Office for offences including defective tyres and illegal tints and 58 vehicles seized.

This includes a grey Seat Ibiza seized from a 20-year-old man after it was captured on dashcam footage clocking up more than 85 miles per hour on the A38 Sutton Coldfield Bypass, last August.

In March Birmingham Crown Court he was banned him from driving for 12 months and the judge issued a deprivation order granting police ownership of the vehicle.

The vehicle had its roof cut off at Binley Fire Station in Coventry by West Midlands Fire Service for training purposes.

Sergeant Ade Brown, from Operation Hercules, said: "We need motorists to understand that we won't tolerate illegal street racing or cruising on the region's roads and will take action against motorists who flout the law and put other road users at risk.

"Our ultimate aim is to keep people safe. People have been killed and seriously injured while street racing and it's simply unacceptable to put other motorists and pedestrians at risk in such a reckless way.

"In this case as well as being disqualified from driving, the judge

issued a deprivation order granting us ownership of the vehicle. Once in our hands the vehicles will be ultimately crushed or will be used for training purposes.

"We work closely with our partners on a range of tactics to identify, disrupt and enforce against those taking part or gathering to observe it. Our priority is keeping the roads safe for all."

Operation Hercules is an ongoing campaign to target people involved in street racing or car cruising where vehicles are driven in an antisocial or dangerous manner.

The team won a prestigious award for innovation and excellence at the National Police Chiefs' Council (NPCC) Roads Policing Conference

in Manchester last year.

There is a ban on street racing in Birmingham and the Black Country due to High Court rulings and anyone breaching the ban will be in contempt of court and could face penalties including imprisonment, a fine, or an order to have their assets seized.

The injunctions prohibit people driving, being a passenger or rider at a gathering where there is motor racing, stunts or other dangerous or obstructive driving.

Incidents of street racing should be reported to police by calling 101 or via Live Chat on the forces website.

In an emergency always call 999.

## OFTEN IMITATED BUT NEVER EQUALLED

While all costs are going up - OURS ARE STAYING DOWN

Due to our customer friendly services of No Door Salesmen, No Showroom and little overheads



**NEW FLUSH WINDOWS**

**BEAUTIFUL COMPOSITE DOORS**  
Fully fitted  
**Competitive Prices**



**UPTO 30% OFF ALL WINDOWS**



**ALL PRODUCTS HAVE A 10 YEAR INSURANCE BACKED WARRANTY**

**BILL MOORE'S WINDOWS AND DOORS**  
A NAME YOU CAN TRUST

1 Brookside Close, Stratford-upon-Avon, Warwickshire CV37 9PL

**01789 415171 • 07729 689239 • www.billmooreswindowsanddoors.co.uk**

# New attractions at popular bike event

NEW acts and attractions are revving up for the return of the Rugby Bikefest.

The ever-popular annual event returns to the town centre this weekend with an expanded line-up of live music and entertainment for 2026.

The free, family-friendly festival, organised by Rugby Borough Council in collaboration with local motorcycling groups, takes place on Sunday (May 17) from 10:30am to 4pm.

It will open with the traditional ride-in, when hundreds of bikes will set off from Draycote Water to the town centre, taking in Dunchurch, Ashlawn Road, Hillmorton Road and Whitehall Road along the way.

Attractions include arena displays, vintage cars, a funfair and a range of stalls.

Two live music stages in Market Place and Church Street will showcase a line-up of local talent, including the Rugby Electric Guitar Orchestra, Sweet Medusa, Overdrive, 2nd Hand Daylight, Jester, Ultrafade, The Mutineers, The Happy Hours, Lisa Curley and the Rugby Jazz Collective, and The Jellyheads.

Thrill-seekers can also experience the Extreme Wheelie Machine, featuring a motorcycle simulator and virtual reality experience, while Extreme Bike Battle performers will deliver stunt displays throughout the day, and additional displays and activities will take place in Asda car park.

Visitors are advised to follow stew-



ard guidance during the ride-in and remain off the roads until all motorbikes are safely parked.

Free parking will be available all day at John Barford car park.

Tom Kittendorf, Rugby Borough Council's Assistant Director for Leisure and Wellbeing, said: "With continued support from local biker groups, Bikefest continues to grow, and 2026 is set to be one of our most exciting events yet."

"With an expanded live music

line-up, thrilling stunt displays and activities for all ages, there really is something for everyone to enjoy.

"Events like Bikefest play a vital role in supporting our town centre, bringing visitors into Rugby and encouraging people to spend time exploring and supporting local businesses."

Visit [therugbytown.co.uk/rugby-bikefest](http://therugbytown.co.uk/rugby-bikefest) for more information and full timings.



Visitors are encouraged to try sailing at the fun day. Picture by Draycote Water SC / Malcolm Lewin Photography

## Offering a chance to get out on the water

LANDLUBBERS are being invited onto the water at a sailing club near Rugby.

Draycote Water Sailing Club is hosting a fun day, encouraging visitors to try sailing, windsurfing or paddleboarding – with experienced helms to show them the ropes.

Visitors will also be able to try windsurfing on a land simulator and afloat, and enjoy paddleboarding, depending on wind strength.

Event organiser Dave Rowe of Draycote Water Sailing Club said: "It's a great opportunity for anyone wanting to give sailing or windsurf-

ing a go, and we'll also have lots of fun games ashore for families, including a chance to meet our resident pirate, who has a hoard of treasure and loves nothing more than a water fight!"

Severn Trent Water and Rugby Canoe Club will also exhibit at the event. Refreshments will be available from the club galley.

The event takes place on Saturday (May 16) from 10am to 2pm. Entry is free.

Visit [www.draycotewater.co.uk/](http://www.draycotewater.co.uk/) club-open-day for more information, and to book activities.



## The Railway Touring Company



### Saturday 27 June 2026

#### A day trip by rail to Penzance.

Join us for Mazey Day in Penzance, the highlight of the annual midsummer Golowan Festival. The streets come alive with traditional arts, music and parades, including the community-built wicker models that have become a much-loved centrepiece of the celebrations. Explore street markets and food and craft stalls, with live music, dancing and street performers entertaining throughout a town beautifully decorated with flags and flowers. Enjoy a highly scenic route through the far west of Cornwall, where the journey is as memorable as the destination.

- Join us from Dorridge, Solihull and Birmingham New Street
- From £115 per person
- Premier Dining available

### The Mazey Day Cornishman

MAGNIFICENT LOCOMOTIVES • SCENIC JOURNEYS • FASCINATING DESTINATIONS

For more information please visit [railwaytouring.net](http://railwaytouring.net) or phone 01553 661 500



**THE BED FACTORY**

**SPECIALISTS IN BEDS AND MATTRESSES FOR PEOPLE WITH BACK, SHOULDER OR HIP PAIN.**

**SALE NOW ON**

**The Harrison Handmade Beds**

**KING FOR DOUBLE**  
on all complete beds from Harrison.



Complete Range of Harrison FR **Chemical Free** Beds on Show

**Special Price Ottoman**

**FREE HEADBOARD**



Single £449 • Double £499  
King £599 • Super King £699

**Eppy Wood Frame**



3'0 £399 • 4'6 £499  
5'0 £549 • 6'0 £599

**1 WEEK DELIVERY ON ELECTRIC BEDS**

**FREE AT HOME SELECTION AVAILABLE**



**5 POINT MASSAGE MATTRESS NOW AVAILABLE TO TRY IN STORE.**

We are specialists in electric adjustable beds and have A Large Selection Available Starting From £999

**Avon Fire Side Chair**



£699.00

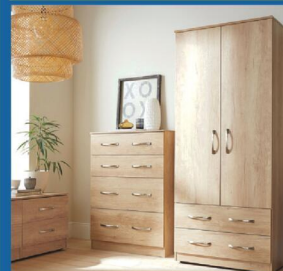
**Special Edition 2 Drawer Bed Set**

**FREE HEADBOARD**



3'0 was £539 now £479    5'0 was £769 now £679  
4'6 was £639 now £579    6'0 was £899 now £799

**Bedroom Furniture**



Full Range of Bedroom Furniture Available

**Celebrity studio in store**



**Mammoth Ultimate Health Mattress**

**2 X FREE PILLOWS WITH ANY DOUBLE, KING OR SUPERKING MAMMOTH MATTRESS**

Helps reduce back, shoulder and hip pain

Mattresses	Support Chairs	Beds	Sofas
Riser Recliners	Electric Adjustable Beds	Corner Sofas	Headboards
Chests	Wardrobes	Pictures	Mattress Toppers
Lamps	Pillows	Duvets	Z Beds

**Leamington's Largest Independent Bed Retailer**

**We can supply a large range of beds in 1 to 2 weeks - 3' Single Beds also available - WE SUPPLY WHEN OTHERS FAIL**

139 Regent Street, Royal Leamington Spa, CV32 4NX

**01926 422404**

sales@thebedfactory.co.uk  
and www.thebedfactory.co.uk

**Trustpilot** ★★★★★

# Care home's happy with Good report



Angela Youngman Stewart (right) was presented with a Special Appreciation Award by Mayor Barbara Brown.

A DELIGHTED musical director has been honoured for her contribution to Rugby culture during a celebration of music at the Town Hall.

Angela Youngman Stewart was presented with The Mayor's Special Appreciation Award – a certificate bearing the borough's coat of arms and citation – in recognition of her 'long-standing and broadly-based contribution to the musical life of Rugby'.

She was surprised with the award at a celebration of the town's music, hosted by Mayor Barbara Brown at the council chamber.

An ad hoc choir, known for the day as AYMC Musicians, sang Alexander Youngman's arrangement of The Lark in the Clear Air in honour of Angela.

The programme was opened by

three songs performed on acoustic guitar by Coun Rob Barnett, before Long Lawford Community Choir sang the early 19th century American folk song Oh Shenandoah.

Rugby Community Choir performed the J&M Phillips song California Dreamin', made famous in the 1960s by The Mamas and the Papas, and followed this by leading a round, Banaha, for all to join in.

Five youngsters from the Hill Street Youth Centre's School of Rap – whose aim is 'to empower young people through the transformative power of music and rap' - performed pieces they had adapted or written themselves.

The event concluded with the Irish blessing May the Road Rise up to Meet You, led and accompanied on guitar by Anna Perry.



Staff and residents at Overslade House Care Home celebrate the CQC 'Good' rating.

'DELIGHTED' staff and residents at a Rugby care home have welcomed a glowing report from inspectors.

Overslade House passed a recent Care Quality Commission inspection with an overall 'Good' rating after being praised for a responsive, safe, effective, caring and well-led service.

The report said the home had a 'proactive and positive' culture of safety based on 'openness and honesty', adding that staff listened to concerns about safety and investigated and reported safety events.

Inspectors also praised the home for involving people and treating them with 'compassion, kindness,

dignity and respect', and for involving residents as partners in their care.

The report also highlighted how people's care, treatment and support achieved good outcomes and promoted a good quality of life.

The service leadership, management and governance were praised for high-quality, person-centered care, supported learning and innovation, and an open, fair culture.

Staff felt valued and managers were visible and gave them support and guidance.

To celebrate and thank staff, each team member was presented with a £100 gift voucher.

General Manager Genoveva Tamasi said: "We are delighted that

Overslade House was rated 'Good' overall following the CQC's most recent inspection.

"The team at Overslade House always strive to provide the best possible quality care for everyone who lives at the home."

The report came hot on the heels of a Grand Opening Day to celebrate a refurbishment, including a new cafe, spa bathrooms, a hair salon and a sensory room.

Mayor Barbara Brown performed the ceremonial ribbon-cutting at the revamped home.

Ms Tamasi said: "The home is looking better than ever after the recent investment. I'm looking forward to showcasing the elegant new interior to members of our community."

## Questions about care? We can help

We know moving into residential care is an emotional and difficult decision with lots to think about.

With over 30 years' experience, we can help you navigate the process of finding the right care home, so that you feel confident about the decision you make – whether that's choosing a WCS Care home, or one outside our group that's more suited to your needs.

If you've got questions about care, or one of our care homes, our Trusted Advisors can help.



Philip Rainsford



Drovers House, Rugby

07802 728447

p.rainsford@wcs-care.co.uk



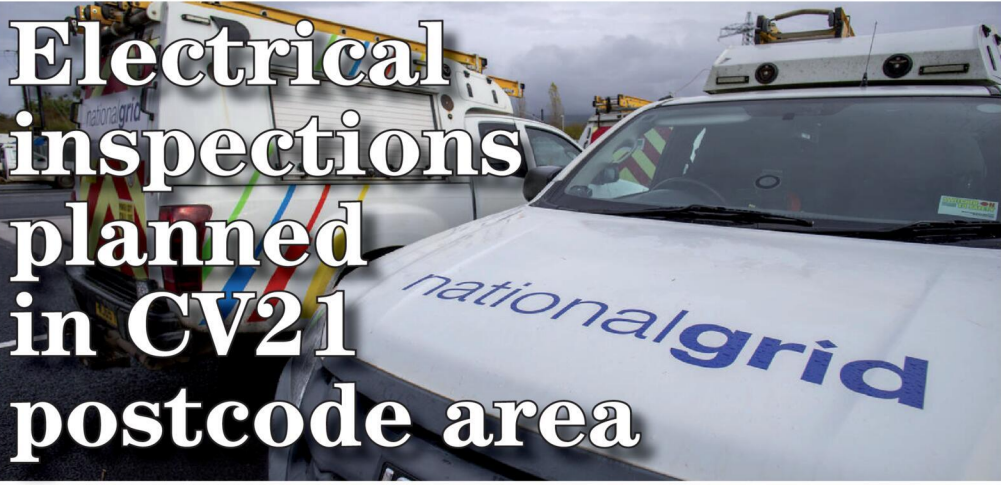
Westlands, Rugby  
Dewar Close, Rugby

07802 728443

j.rugg@wcs-care.co.uk



Josephine Rugg



# Electrical inspections planned in CV21 postcode area

Homes and small businesses can expect visits from NGED-employed engineers. s

by **Andy Morris**  
andy.morris@bullivantmedia.com

**ELECTRICITY safety checks are being carried out at homes and businesses in Rugby this month.**

National Grid Electricity Distribution (NGED) is visiting customer properties in Rugby as part of a safety inspection programme.

Domestic and small business customers in the CV21 postcode will receive visits from NGED-approved contractors, to check that service termination points are working properly.

The service termination point, also known as a 'cut-out', is where the main incoming electricity service cable and fuse are situated, in most cases near the electricity meter.

They are situated in a meter cabinet on the outside of most modern properties built since the 1980s though they can be located inside a property, next to the electricity meter or the customer's consumer unit.

No disassembly work will be carried out and customers' power supply will not be interrupted while inspections occur.

Richard Brady, NGED's policy engineer who is heading

the inspection programme, said: "Inspectors will visually examine cut-outs to check they are working as they should, taking photos and notes for our records."

"In the unlikely event of a defective cut-out being found, NGED engineers will be sent to carry out repairs, at no cost to the customer."

"Visits will also be an opportunity to confirm what types of low-carbon technologies (LCT) are connected to our network - for example electric-vehicle chargers and solar panels - to help our planning for future load growth on the network, and enable LCT items to be connected quicker

in the future as we will have records of the cut-out asset on-site, and its condition.

"These are important safety visits but we understand they could be inconvenient for customers and apologise in advance if this is the case."

Inspectors will be from a company called A Coole Electrical and will be clearly identifiable as working for NGED. They will be able to present ID and authorisation to enter properties.

Customers will have the option of taking their own photographs of their cut-out and meter and sending them to NGED, which will decide if a follow-up visit is needed.

# Green school gift

GREEN-fingered pupils at a primary school near Rugby are being encouraged to create a wildflower garden, after they were gifted dozens of 'seed bombs'.

More than 30 seed bombs - small house-shaped clusters of growing medium containing wildflower seeds - have been donated to Knightlow CofE Primary School by housebuilder Taylor Wimpey West Midlands, said: "Gardening provides so many positives in a person's life, including nurturing a love of nature, so we wanted to support outdoor learning lead at Knightlow CofE Primary School by encouraging them to create their own wildflower garden, through this donation."

Cathy Amos-Simpson, outdoor learning lead at Knightlow CofE Primary School, said: "We are so grateful to Taylor Wimpey West Midlands for donating these seed houses. The children were really pleased with them."

"Planting these will help us towards gaining our

green trees silver award. "Our eco-ambassadors, reception and key stage 1 pupils are looking forward to seeing a lovely wildflower garden flourish and spotting the insects and creatures that will hopefully visit and benefit from our new nature area."

Ben Walker, sales and marketing director at Taylor Wimpey West Midlands, said: "Gardening provides so many positives in a person's life, including nurturing a love of nature, so we wanted to support outdoor learning lead at Knightlow CofE Primary School by encouraging them to create their own wildflower garden, through this donation."

"Hopefully, it will foster a real joy for being outside, connecting with nature and a true love of gardening."



Pupils at Knightlow CofE Primary School with their new seed bombs. s



## OUR BIG SALE IS STILL ON

### INFLATION EVERYWHERE - BUT NOT AT CARPET MILL!

Everything is going up in price, the same for Carpets and this is why it pays to go to Carpet Mill. Manufacturers of yarn and other materials for making carpets have all had price rises and some manufacturers are busy changing their specifications to many ranges to compensate. They also get surplus rolls that they cannot sell to the big stores as they don't have enough stock left to service them.

**Therefore, we are buying those rolls at a FAT DISCOUNT and passing it on to YOU.**





Everything Reduced  
BE QUICK

## BRAND NAME CARPETS AT LOW LOW PRICES

# CARPET MILL

CROMWELL STREET (OFF RED LANE) COVENTRY CV6 5EY TEL: (024) 7666 1985

SOME CUSTOMERS TRAVEL MILES - YOU DON'T HAVE TO - WE ARE HERE

[www.salecarpet.uk](http://www.salecarpet.uk)



# City venues are ready to play host as the best of British art heads this way



THE EYES of the art world will focus on Coventry this Autumn as the city plays host to the prestigious British Art Show – with Coventry University set to play a key role.

The show, held once every five years, is the UK’s premiere exhibition of contemporary art and will showcase the work of influential, high-profile artists at Coventry University, University of Warwick and Herbert Art Gallery.

Held since 1979, it is developed and produced by Hayward Gallery Touring at London’s Southbank Centre and will be led by renowned curator Ekow Eshun.

In the past the show has helped

introduce artists such as David Hockney, Bridget Riley, Lucian Freud, Frank Bowling, Paula Rego, Mary Kelly, Frank Auerbach, Mona Hatoum, Cornelia Parker and Anish Kapoor to millions across the country.

Coventry University’s Delia Derbyshire building (pictured) will play host to some of the show’s exhibits, alongside the Mead Gallery at the University of Warwick and the Herbert Art Gallery and Museum.

Following its time in Coventry, the show, in its tenth iteration this year, will move on to Swansea, Bristol, Sheffield and Newcastle Gateshead.

Craig Ashley, from Coventry University’s College of the Arts and Society, said: “This is an incredibly prestigious event and in the past cities that have hosted the British Art Show have gone on to see further investment supporting the longer term development of the arts and creative sectors.

“This event only happens once every five years and everybody involved in the visual arts will have their eyes on it – the show acts as a bit of a temperature check of where contemporary British art is at the moment and it also gives us the chance to celebrate Coventry’s contribution to visual arts practice both now and

in the past.

“We’re thrilled to be one of the venues hosting in Coventry. What is really distinctive about us is the fact we’re not a traditional gallery or a museum, we are a place that makes art and this will be visibly happening alongside the British Art Show.

“Not only is this a great opportunity for the city, it brings great benefit to our students who will gain experience through the installation of the artworks, they will invigilate the public exhibitions, and engagement with the content of the show will form part of their studies. It really will give them a taste of the kind of opportunities

available within the sector.”

Brian Cass, Head of Hayward Gallery Touring, said: “Over its almost 50-year history, the British Art Show has been unrivalled in its artistic ambitions and national reach, each edition engaging with the most significant art of its time.

“Ekow Eshun has an extraordinary track record of making exhibitions that shape the conversation about art and culture and we are looking forward to the new perspectives he will bring to British Art Show 10 and working with our partners to expand the exhibition’s reach and relevance for audiences in Coventry.”

## THE JONES FAMILY

### JEWELLERS

**IN-HOUSE  
JEWELLERY  
REPAIRS**

**FINE  
JEWELLERY  
EXPERTS**

**CASH FOR  
GOLD & SILVER**

**WATCH  
BATTERIES  
& RESEALS**

**WATCH  
STRAPS & PEARL  
RESTRINGING**

SATCHWELL WALK,  
LEAMINGTON SPA  
01926 882552

TALISMAN SQUARE,  
KENILWORTH  
01926 954271

ROYAL PRIORS,  
LEAMINGTON SPA  
01926 893393

WWW.TJFJEWELLERS.CO.UK



FOR APPOINTMENTS EMAIL: ENQUIRIES@TJFJEWELLERS.CO.UK

PROFESSIONAL  
JEWELLER  
— Awards 2025 —  
RETAIL TEAM  
WINNERS 2025

# Moving Forward: A Fresh Approach to Independence Has Arrived in Leamington Spa

**Max Mobility Ltd has taken an exciting step forward as its 'New Store is Now Open' in the Royal Priors shopping centre, Leamington Spa, bringing trusted expertise and a smoother path to independent living.**

Already firmly established with its flagship store in Coventry, Max Mobility has built a reputation that continues to go from strength to strength, driven by exceptional products, outstanding value, and customer care that is always a step ahead. Now, that same dedication is arriving in Leamington Spa, ready to support the local community every step of the way.



At Max Mobility, independence is never out of reach. With an extensive range of high-quality mobility solutions, customers can find the right support to keep life moving in the right direction. From mobility scooters that help you get back out and about, to powerchairs that offer comfort and control, alongside wheelchairs, riser recliner chairs and essential daily living aids, every product is designed to help customers stay active, confident, and firmly in control.

What truly sets Max Mobility apart is its people-first approach. There is no pushy sales pitch, no pressure, just honest, expert advice that helps customers navigate their options with confidence. The experienced team works closely with every individual, ensuring each solution is the right fit, not just for today, but for the road ahead.

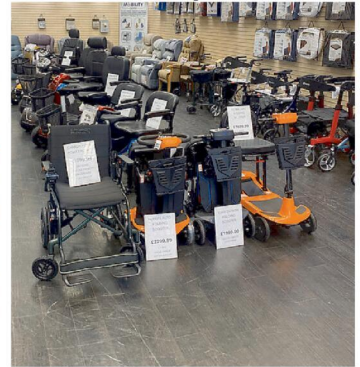
Customers can also take things at their own pace with home demonstrations, making it easier to try before they decide. With professional delivery, expert installation, and dedicated after-sales care, support doesn't stop at the door, it continues long after.

All the staff of Max Mobility Ltd, say: "We're incredibly proud to be opening in Leamington Spa. Everything we do is focused on improving people's quality of life, from the products we offer to the way we support our customers. This new store allows us to bring our expertise, our values, and our commitment to exceptional service to even more people across the region."

With its arrival in Leamington Spa, Max Mobility Ltd is helping customers move forward with confidence, regain their independence, and enjoy life without limits.



**Max Mobility Ltd, Royal Priors, Leamington Spa, NOW OPEN**  
[www.maxmobilityltd.co.uk](http://www.maxmobilityltd.co.uk)



## SPECIAL OPENING VOUCHER DEALS

**NEW STORE NOW OPEN IN THE ROYAL PRIORS SHOPPING CENTRE LEAMINGTON SPA**

**4mph Boot Scooter** **SAVE £200**  
**WAS £799**

Up to 8 miles range  
Easily Transportable



**OPENING DEAL £599.99**

**Four Wheel Walker** **SAVE £70**  
**WAS £149.99**

Folding Rollator  
Padded Seat



**OPENING DEAL £79.99**

**Riser Recliner Chair** **SAVE £200**  
**WAS £699.99**



**OPENING DEAL £499.99**

**Light Weight Wheel Chair** **SAVE £90**  
**WAS £249.99**



**OPENING DEAL £159.99**

**Hurricane Walking Stick** **SAVE £20**  
**WAS £29.99**

ONLY ONE PER CUSTOMER



**OPENING DEAL £9.99**

Wheelchairs from **£129.99** • Motorised Bath Lifts from **£279.99** • Commodes from **£59.99** • 3 Wheel Walkers from **£69.99**

**CALL TO BOOK YOUR SCOOTER SERVICE**

# 07869 961147

Max Mobility Ltd, 8 Lower Mall,  
Royal Priors Shopping Centre, Cv32 4XU  
[www.maxmobilityltd.co.uk](http://www.maxmobilityltd.co.uk)

Pictures for illustration • Prices with VAT Exemption

# RCN BEDS FURNITURE

**£599**



**SAVE**

**RECLINERS**



**£899**



**ADJUSTABLE BEDS**



**£299**



**WHILE STOCKS LAST!**



**SALE**

**OAK/PINE BEDROOMS**

**SAVE**



**CARPETS**



**SAVE**

**ITALIAN SOFAS**



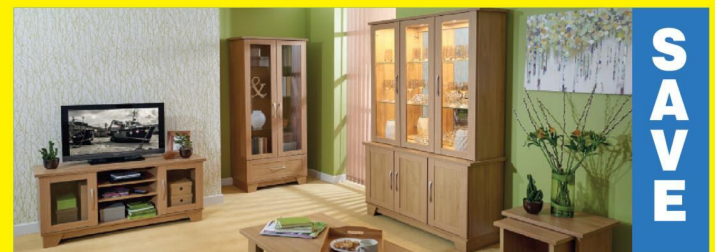
**SAVE**



**MATTRESSES**



**BEDROOM FURNITURE**

**SAVE**

**WE ARE OPEN 6 DAYS 9AM-4:30PM - FREE FAST DELIVERY**

**rcn**  
Beds & Furniture

**HENLEY ROAD, COVENTRY**  
**TEL: 02476 603254**

# Firm's founder is a second-time winner



Mitchell Barnes and his company RYSE 3D have been awarded their second King's Award. Picture by Marcus Mingins 2026003MMR

A **ENTREPRENEUR** who set up a 3D printing company in Shipston has become the youngest ever to be given a top business accolade for a second time.

Twenty-nine year-old Mitchell Barnes, who runs RYSE 3D with his brother Cameron, has again been awarded The King's Award for International Trade.

The firm, which was founded in 2017, supplies parts to hypercar projects - cars with features that innovative in automotive design and most of which can also reach

60mph in under three seconds - as well as taking up aerospace, defence and energy contracts.

Previously recognised in 2024 with the King's Award for innovation, RYSE 3D's success abroad has led it to invest more than £1million into new printers and materials at its south Warwickshire headquarters.

Mitchell said: "We wanted to demonstrate that we could take UK technology and export it as something international firms want. The last three years have proved this was the right approach, with global sales up 2,322 per cent since

2023.

"To win one King's Award is special, to win a second for our efforts in growing the business overseas is mind-blowing."

"We've already won work in the US based on winning one award. I can't wait to get back overseas and tell people we are a double-winning King's Award business."

The company has expanded beyond the US market to serve clients in Denmark, France and Latvia, and now has 18 employees and an annual turnover of nearly £5million.



Pupils from Stratford Primary School have fun at the butterfly release to celebrate David Attenborough's 100th birthday. Picture by Marcus Mingins 192606MMR1

## A birthday tribute

A HUNDRED Blue Morpho butterflies took flight at Stratford Butterfly Farm to mark Sir David Attenborough's 100th birthday.

Youngsters from Stratford Primary School and Thomas Jolyffe Primary School joined in the celebration at the tourist hotspot on Friday (May 8) - the landmark birthday of the celebrated naturalist and conservationist.

The butterflies were released into the rainforest flight area of the Swan's Nest Lane attraction in a symbolic gesture that not only

celebrated Sir David's legacy but which also aimed to inspire the next generation to appreciate and protect the beauty of nature.

Sir David, who has previously visited the Butterfly Farm, has long been an inspiration to the team and to millions around the world through his passion for wild-life and conservation.

Butterfly Farm owner Clive Farrell, a renowned lepidopterist, was also at the event, ahead of celebrating his birthday the following day.

# SUMMER JUST GOT BETTER

**SAVE £50 PER PERSON**  
Use code **SUMMER50**  
when you book May and June Holidays.

Discover effortless, elegant escapes with Johnsons Coaches Travel in comfort. Stay in hand-picked hotels. Enjoy every moment.



Lake District Rail, Sail & Castle Trail  
**3★ The Crown at Wetheral**  
Sun 24 - Thurs 28 May  
From **£999pp**



Rail & Sail in the Western Highlands  
**3★ Winnock Hotel**  
Wed 24 - Mon 29 June  
From **£1049pp**



Hidden Gems of the North  
**4★ The Derwent Manor**  
Mon 15 - Fri 19 June  
From **£879pp**

### Hassle-Free Travel | Handpicked Hotels | Exceptional Value



Somerset & Devon Steam Spectacular  
**3★ The Northfield Hotel**  
Fri 19 - Fri 26 June  
From **£1199pp**



Picturebook North Devon  
**4★ The Saunton Sands Hotel**  
Sun 21 - Thurs 25 June  
From **£999pp**



A Week on the English Riviera  
**3★ The Queens Hotel**  
Fri 26 June - Fri 3 July  
From **£1149pp**

View our 2026 Coach Holidays by scanning the QR code



Book now and secure your perfect summer getaway

**JOHNSONS**  
Part of the Coach Travel Group

Visit [www.johnsonscaches.co.uk](http://www.johnsonscaches.co.uk) or Call 01564 510 285

# Rail scheme secures gold

WEST MIDLANDS Railway (WMR) has become the first UK train operator to earn a gold apprenticeship accreditation.

The company has achieved 'excellent employer' status for its industry-leading engineering apprenticeship scheme, after a 12-month assessment, led by Next Gen Makers.

The award uses feedback from apprentices to identify companies which delivered outstanding training opportunities.

WMR's four-year, salaried apprenticeships are provided with Birmingham Metropolitan College and blend practical and classroom learning.

The company's 16 apprentices carry out most of their course from the company's main depot, in Tyseley, Birmingham, where they learn to service mechanical and electrical systems used across the rail industry, giving skills for life.

John Doughty, WMR engineering director, said: "This accreditation recognises our commitment to offering high quality training so we can develop the next generation of rail talent and help young people launch their career with us. I started my career as an apprentice so I know how valuable these opportunities are and I am so proud that our team has achieved this gold standard."

Visit [westmidlandsrailway.co.uk](http://westmidlandsrailway.co.uk) for more details.



# Every little helps

Tesco is providing more free fruit to ensure children get their five-a-day after shocking statistics showed only one in nine youngsters in the West Midlands receive the recommended portions. s

by Tom Harris

SUPERMARKET giant Tesco will be helping children in the West Midlands get their five-a-day fruit or veg portions.

Shocking statistics show only one in nine youngsters in the region are eating the recommended amount of fruit or vegetables each day.

Research shows 72 per cent of children are more likely to eat or try fruit if they choose it themselves.

Some 71 per cent say making food fun or visually creative encourages children to try more.

Tesco is aiming to help a million schoolchildren across the UK access free fruit and vegetables by July 2029.

The supermarket company is also holding a competition for children to get creative and produce their own fun fruit-and-veg-packed recipes.

The winning dish will be served to more than 1,500 schools to mark expansion of the free programme.

After 94 per cent of teachers reported improved behaviour among pupils who joined the free fruit scheme, Tesco is planning on doubling its programme from September.

The supermarket is running the initiative after 64 per cent of parents said they had stopped buying certain goods because children repeatedly refused to eat them.

Tesco hopes to get children back to eating healthily with a range of

colorful fruit and veg. Along with fruit and veg grants - available in and out of Tesco stores - customers themselves will be able to expand the programme, as every time they buy fruit and veg until May 24, Tesco will donate items to the cause.

Tesco CEO Ken Murphy said: "We've set out an ambition to help 1 million children get free fruit and veg through our school and community programmes, supporting the development of healthy habits."

"Schools have told us what a positive impact the Tesco free fruit and veg for schools programme has already made so we're delighted to be able to double the number of schools receiving support, from September."

Chief executive of the British Nutrition Foundation, Elaine Hindal, said: "A significant number of children in the UK are growing up with diets that don't support their health."

"Early food experiences matter, as they can help to shape children's confidence, habits and long-term health outcomes. By helping children enjoy and regularly eat fruit and vegetables from a young age, programmes like Tesco free fruit and veg for schools can help to make a lasting difference to diet and health, now and in the future."

Visit [tescopls.com/fruitandvegchallenge](http://tescopls.com/fruitandvegchallenge) for more information on how to enter the recipe competition and on the free fruit and veg scheme.



	Adult	Child
<b>May</b>		
26th Lunch & Entertainment.....	£37.00	
27th Skegness.....	£29.50	£24.00
30th Camden Market.....	£30.00	
<b>June</b>		
6th Gloucester Docks & Quays .....	£26.00	£20.00
13th Bath.....	£30.00	£25.00
16th Shrewsbury .....	£27.00	£22.00
27th Windsor.....	£30.00	£24.00
<b>July</b>		
4th Weston-Super-Mare.....	£29.50	£24.50
11th Chester.....	£29.00	£24.00
18th Hunstanton.....	£31.00	£25.00
22nd Cambridge.....	£29.00	£24.00
25th Wellesbourne Market .....	£16.00	£11.00
28th Cheshire Oaks.....	£29.00	£24.00
<b>August</b>		
1st Llandudno.....	£31.00	£25.00
6th Liverpool.....	£29.00	£22.00
11th York.....	£29.00	£24.00
13th Telford.....	£27.00	£22.00
15th Mystery Seaside.....	£30.00	£24.00
Liverpool- Atlantic Tower Hotel 31st July-2nd August 26. 3 Days/2 Nights.....	£180	Per Person
Price Include s- All Coach hire, Evening meal on 1st night only, 2 nights accommodation, 2 days breakfast, free time round Liverpool		
Llandudno - The Chatsworth House Hotel 10th-14th August 26 5 Days/4 Nights.....	£395	Per Person
Price Includes - All Coach hire, 4 nights accommodation, Evening Meal & Breakfast, Day excursions, Portmerion Village & 2 course meal and Welsh Highland Railway Journey		
Blackpool - Grand Hotel 30th October-1st November 26 3 Days/2 Nights.....	£195	Adult, £99 Child
Price Includes - All Coach travel, 2 nights accommodation, evening meal and breakfast		

[www.phoenixcoaches.org.uk](http://www.phoenixcoaches.org.uk)

Tel No 02476 350 811. 50 Southfield Close, Nuneaton. CV10 OBE

# Special Family Announcements



Births, Engagements, Weddings, Anniversaries, Happy Birthdays, Congratulations or sadly Deaths and In Memory Announcements can all be placed in your **Observer** to appear in printed newspaper weekly, and online247

You can call us on **01527 588688** or email details to us (including photograph if desired) with your telephone contact details and we will call you back to confirm cost [reception@bullivantmedia.com](mailto:reception@bullivantmedia.com)

Prices start from just **£15** (inc Vat)

# TRANSFORM YOUR KITCHEN WITH A MAKEOVER

By Kitchen Doors & Worktops

Use our Instant On-Line Price Tool Calculator



BEFORE



AFTER



KITCHEN

## Doors

& WORKTOPS

For a **FREE** home quote - Call Us TODAY!

# 0800 448 8074

[www.doorsandworktops.com](http://www.doorsandworktops.com)



## 20% OFF

For Blue Light Card Holders

\*Kitchen makeovers start from around £3000



Children in Warwickshire have found out where they will be starting school in September

## Most will get first choice Primary

THOUSANDS of children across Warwickshire have been offered places at primary schools, with most children starting school for the first time allocated one of their top three school choices.

This year, there were 6,535 Warwickshire children who applied for a Reception place by the application deadline of January 15.

Of these, 88 per cent have been given a place at their first-choice school, and a further nine per cent have been given a place at either their second or third choice – meaning 97 per cent have been given a place at one of their top three preferred schools.

There were also 1,321 Warwickshire children who applied for a Year 3 place at a Junior school. Of these, 99 per cent were given their first-choice school.

Parents and carers who applied for their school place online – the most common method – will receive an email, or can check WCC's online parent portal, to get details of their school place and instructions on what to do next.

Johnny Kyriacou, director of education at Warwickshire County Council, said: "We're proud to have excellent schools in Warwickshire, providing our children with the best start to their education and I know

they are looking forward to welcoming new pupils from September."

The council will automatically accept school place offers on behalf of each family.

Parents and carers do not need to take any additional action at this stage and should instead look out for updates directly from the school their child has been offered, including information about uniform requirements, welcome activities and term dates, which will also be available on each school's website.

Visit [www.warwickshire.gov.uk/admissions](http://www.warwickshire.gov.uk/admissions) for more information for parents and carers on school admissions.

# Inclusivity efforts bring Ofsted praise for schools

A 'FANTASTIC achievement' - schools in Warwickshire have been praised for how they include pupils with special needs or from disadvantaged backgrounds.

Oakfield Primary Academy in Rugby, Welford-on-Avon Primary School in Stratford, and Tudor Grange Primary Academy Haselor in Alcester have been recognised for their inclusive practice in recent Ofsted inspections.

Inspectors highlighted the schools' commitment to ensuring pupils were supported to participate, feel a sense of belonging, and achieve their potential.

This includes pupils with special educational needs and disabilities (SEND), those experiencing disadvantage, and others who may face additional barriers to learning.

At Oakfield Primary, inspectors noted staff were well trained and supported by specialist resources such as Braille typewriters and sensory aids.

School leaders were commended for holding regular reviews, pupil feedback and staff discussions, and making strong partnerships with families and external agencies.

Welford-on-Avon Primary was praised for its leaders' commitment to meeting pupils' needs, effective early identification, close partnership working with families and 'thoughtful' curriculum adaptations.

Inspectors also noted the positive impact of the onsite specialist provision, Cressview, which provides a tailored curriculum for autistic pupils.

At Tudor Grange Primary, inclusion was described as being 'at the heart of everything they do'.

Inspectors highlighted its personalised approaches, and targeted strategies such as reading interventions and emotional regulation activities.

John Coleman, executive director for children and young people at Warwickshire County Council, said: "These inspection outcomes are a fantastic achievement for the schools involved and a testament to the commitment of staff, leaders and families to inclusive education."

"Seeing schools recognised for strong inclusion under Ofsted's new framework demonstrates the positive impact of shared values, collaboration and continued investment in inclusive practice."

just go holidays

from Coventry, Rugby

Reader Travel

The Observer



### RHS Badminton Flower Show & Historic Bath

Departing Sat 11 Jul '26

Don't miss the brand-new RHS Badminton Flower Show, the first of its kind in Gloucestershire! Look forward to stunning show gardens, excellent shopping opportunities and tips from expert horticulturalists, combined with time in the picturesque city of Bath.

**SO MUCH INCLUDED...**

- ✓ Return coach travel from Rugby, Coventry
- ✓ Overnight stay at a selected hotel (JG3 or JG4 rating) with dinner & breakfast
- ✓ Admission to the RHS Badminton Flower Show, with coach transfer
- ✓ En-route visit to Bath

2 Days by Coach **only £199**

Single Supplement £50



### The Great Yorkshire Show

Departing Wed 15 Jul '26

Taking place every summer, The Great Yorkshire Show is known as one of the very best agricultural events in the country. Expect everything from show jumping and sheep shearing to forestry and flower displays, there's even a goat-milking competition!

**SO MUCH INCLUDED...**

- ✓ Return coach travel from Coventry
- ✓ Overnight stay at a selected hotel (JG3 or JG4 rating) with dinner & breakfast
- ✓ Admission to The Great Yorkshire Show, with coach transfer
- ✓ En-route visit to Skipton Market

2 Days by Coach **only £189**

Single Supplement £40



### Discover Edinburgh & Stirling

Departing Mon 15 Jun '26

Two of Scotland's most picturesque cities await on this great-value break! We're based in atmospheric Edinburgh, the perfect place to soak up Scottish culture, and also include an excursion to charming Stirling, known as the Gateway to the Highlands.

**SO MUCH INCLUDED...**

- ✓ Return coach travel from Rugby, Coventry
- ✓ 4 nights at the Britannia Hotel, Edinburgh (JG2 rating) with dinner & breakfast
- ✓ Free time in Edinburgh
- ✓ Excursion to Stirling

Optional excursion to Perth (£15pp)

5 Days by Coach **only £369**

Single Supplement £100

For more information, or to book, please call

**03332 342 514** Quote **osg**

or visit us online at

[justgoholidays.com/OSG](http://justgoholidays.com/OSG)

033 numbers are free within inclusive minutes packages otherwise standard rates apply.

justgohols

These packages are subject to Just Go! Holidays terms & conditions. Coach bookings are protected by Bonded Coach Holidays & the Association of Bonded Travel Organisers Trust Ltd. Air holidays are ATOL protected No. 10383. Prices are per person, based on two people sharing a room & are based on bookings made up to 7 days prior to publication, after which prices may fluctuate. Calls to OSG numbers are free with inclusive minutes packages, else standard rates apply. Choices of date, hotel, airport or pick-up location may incur a supplement. Please see website or call for full details.



# Challenging times offer catering firms food for thought



In challenging times for the industry businesses have been praised for innovative ideas. Anand Mistry serving up something spicy at Leamington Food and Drink Festival. Picture by Marcus Mingins 3723004MMR4 www.buyphotos247.com

SMALL businesses in the food and drink sector across Coventry and Warwickshire have been praised for their resilience in the face of a series of challenges.

The latest meeting of the Coventry and Warwickshire Food and Drink Producers Network, a joint initiative between Coventry City Council and Warwickshire County Council, was held at Elle's in Coventry.

The network is an opportunity for businesses and sector specialists to collaborate, share insights, and explore opportunities for growth across the region.

Corin Crane, the chief executive of the Coventry and Warwickshire Chamber of Commerce, was the

guest speaker for the event and told the 50 gathered business people that their industry was one of the most affected by global uncertainty.

He said: "Survival itself is success at the moment. Getting through challenging times takes resilience, adaptability and difficult decisions – and there's no simple or perfect answer. I'm in awe of food and drink businesses for the way they have a passion for something, set up a business and just do absolutely everything they can to turn a profit and survive."

"The businesses that do well are those that really understand their customers, protect the quality of their product and find smart ways to innovate, collaborate and use

technology.

"For me, food and drink businesses define places. They shape the identity of our cities and towns, and they are often the reason people choose to visit in the first place."

"Food and drink is vital to our local economy, supporting thousands of jobs and independent businesses, and that's why it's so important that government and partners continue to support the sector to grow."

"Working together across the food and drink network gives us far more strength than working alone, especially in challenging times and I'd urge everyone here to keep networking and collaborating."

Denise Osborne, Business Advisor, Coventry City Council, added: "The

Coventry and Warwickshire Food and Drink Network is about bringing people together including producers, operators and partners and giving them a space to share ideas, opportunities and practical support."

"It's brilliant to have local producers involved in every event. Showcasing what's made here and encouraging people to try it is a really important part of supporting our local food economy."

Ryan Salter, sales and events manager at Elle's, described the thinking behind the venue which is situated close to Coventry Railway Station.

He said: "The original vision for Elle's came from a feeling that Coventry was crying out for some-

thing different – a space that reflected the creativity, energy and independence you see in other major UK and European cities.

"We wanted to create a place that felt warm, lived-in and welcoming – not overly commercial – where people genuinely enjoy spending time."

"At Elle's we're home to six independent kitchens, alongside specialty coffee and two boutique bars, all under one roof."

"The idea is to curate and support independent operators while creating something vibrant for the city."

"It's about giving people choice – somewhere you can meet friends, eat great food, enjoy a drink and experience something social and creative."



## Direct Floors

Home service

Carpets | Vinyls | Laminates | Wood



Shop at home for your new carpet and flooring and receive up to 30% off shop prices. We are COVID SAFE with 1,000's to choose from with our mobile showroom!

- ◆ Mobile showroom to your home
- ◆ 1000's Samples to your door
- ◆ Fully qualified insured fitters
- ◆ Family run business since 1999
- ◆ Furniture moved & carpets uplifted for OAP'S & disabled free of charge



Call 7 days a week 8am-9pm  
**01527-894777**  
[www.direct-floors.co.uk](http://www.direct-floors.co.uk)

REDDITCH BID & SHAKESPEARE RALLY PROMOTIONS PRESENTS



FREE EVENT



SATURDAY Post - 1990 Vehicles

SUNDAY Pre - 1990 Vehicles

EXPLORE CLASSIC, VINTAGE AND MODERN CARS | MOTORBIKES, TRUCKS AND STEAM ENGINES | KIDS FUN FAIR | FOOD & CRAFT STALLS | THE DINO BUS EXPERIENCE

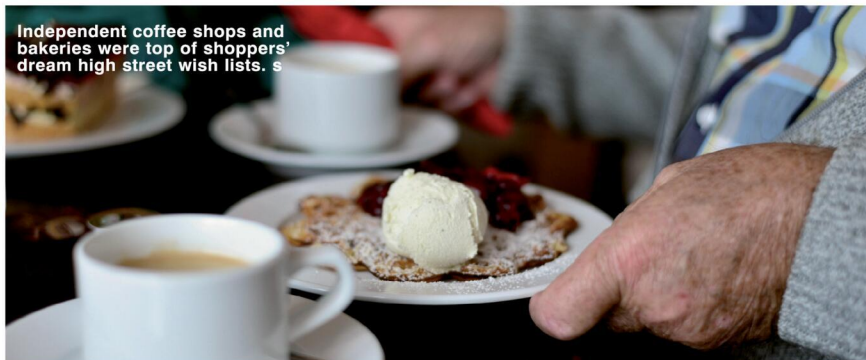
SAT 16 & SUN 17 MAY 11:00 TO 16:00

REDDITCH TOWN CENTRE



www.redditchmotorshow.co.uk

# What do you want from your perfect high street?



Independent coffee shops and bakeries were top of shoppers' dream high street wish lists. s

by Zaynab Hamdy

**BRITS have revealed what they envision their ideal high street would look like, as part of a new survey.**

The Voices of Retail is a landmark new report by Faire and the NEC's Spring and Autumn Fair trade shows, which asked people what they would most like to see in their town centres.

A total of 2,040 UK shoppers and 650 UK retailers were quizzed simultaneously in what is believed to have been the first time both sides of the retail equation have been measured together.

The aim was to offer a clearer picture of what is happening on Britain's high streets.

Nine out of 10 shoppers (92 per cent of respondents) said as a result of artificial intelligence (AI), they were more likely to want to see products in real life and talk to experts.

Some 85 per cent of participants said they valued interaction with

people over self-checkouts or AI assistants and 81 per cent trusted advice from independent retailers more than AI tools.

Despite the rise of online shopping and next-day delivery, the high street continues to play a vital role in British lifestyles – half the survey respondents said their high street was an important part of their community.

Around 95 per cent said they would spend more if their high street offered more variety, with potential additional spending of £145 monthly.

When asked what they would most like to see in high streets, 63 per cent of respondents said free parking for short stays would entice them to visit more often and 62 per cent wanted more independent shops, 48 per cent cleaner streets and 42 per cent longer opening hours.

Free parking came second on the top 20 things Brits would like to see on their dream high street.

Top of the tree was a bakers (desired by 70 per cent of respond-

ents) with independent coffee shops third (59 per cent). The fourth and fifth choices were probably inspired by bank branch closures as 58 per cent of people said their dream high street would have a bank and 57 per cent said a cashpoint.

The rest of the top 10 wants included independent restaurants, a butcher's, a supermarket, a chemist and cafes.

### Dream options

And, also making the top 20 were independent bars, hairdressers, quirky gift shops, takeaways, Greggs', independent book shops, a barber's, M&S, Boots and longer opening hours.

People were also vociferous about what they would like to see less of on their high streets.

Top of that list was vape shops (according to 68 per cent of respondents), followed by empty or boarded up shop units (66 per cent), gambling arcades (52 per cent), bookies' (45 per cent) and payday loan shops or cash convert-

ers (41 per cent). Other businesses people wanted to see less of in town centres included tanning salons, phone repair and accessory shops, fast food takeaways, charity shops and chain coffee shops.

Charlotte Broadbent, UK general manager at Faire, said: "For most people, their local high street is still the heart of their community and what surprised us most is just how strong that demand remains."

"Over the last 20 years, retailers have faced constant challenges, from the rise of online shopping to investment shifting towards out-of-town retail parks."

"But despite that, shoppers are still choosing to support their high street, particularly independent businesses."

"They value the knowledge, the experience and the role these shops play in their community."

"What we're seeing at Faire is that independents are incredibly resilient, working hard to give people a reason to come back."

Paul Grout, 65, owner of MEAT N16, a butcher who started his

store 15 years ago, said: "It's about being able to get a quality service that you just don't get in big corporations."

"You get the professional knowledge and get to know your customers."

"Free parking definitely is a big driver and when Mr and Mrs Jones can't just drive up the street and pick up their Sunday roast, then it stops them from coming to small businesses."

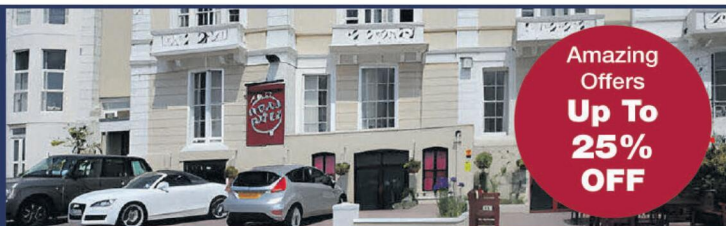
A national consensus showed 59 per cent of shoppers felt independent retailers 'had more personality' and 61 per cent said they 'liked to support local business' – the main reason they wanted to see more of them.

Less than 30 per cent of Brits mentioned price or value as their primary motivation for shopping – reflecting on how shoppers were not always looking for the cheapest option but instead wanted a story, and people they believed in.

Visit [springfair.com/voices-retail](http://springfair.com/voices-retail) report for more on the Voice of Retail report.

## The New Ocean Hotel

WESTON-SUPER-MARE



### FOUR NIGHT SUNSHINE SPECIALS

All include four nights accommodation with 'All You Can Eat' full English breakfast, four course evening meal, live nightly entertainment & optional coach travel

Monday 25th May - Friday 29th May	Was £329 <b>NOW £272pp</b>
Monday 1st June - Friday 5th June	Was £329 <b>NOW £272pp</b>
Monday 8th June - Friday 12th June	Was £335 <b>NOW £283pp</b>
Monday 22nd June - Friday 29th June	Was £339 <b>NOW £289pp</b>
Monday 29th June - Friday 3rd July	Was £355 <b>NOW £293pp</b>
Monday 27th July - Friday 31st July	Was £355 <b>NOW £299pp</b>
Monday 28th Sept - Friday 2nd October	Was £345 <b>NOW £293pp</b>

### WEEKEND BREAKS WITH FREE BAR INCLUDED

All include three nights accommodation with 'All You Can Eat' full English breakfast, four course evening meal, live nightly entertainment, FREE BAR 6pm-10pm & optional coach travel

Friday 22nd May - Monday 25th May	Was £295 <b>NOW £239pp</b>
Friday 29th May - Monday 1st June	Was £295 <b>NOW £258pp</b>
Friday 5th June - Monday 8th June	Was £295 <b>NOW £262pp</b>
Friday 26th June - Monday 29th June	Was £315 <b>NOW £272pp</b>
Friday 3rd July - Monday 6th July	Was £319 <b>NOW £279pp</b>
Friday 10th July - Monday 13th July	Was £325 <b>NOW £283pp</b>
Friday 31st July - Monday 3rd August	Was £325 <b>NOW £283pp</b>
Friday 28th August - Monday 31st August	Was £339 <b>NOW £295pp</b>



To book or for further information please call us on **01934 621 839** • [www.newoceanhotel.co.uk](http://www.newoceanhotel.co.uk)

# Sign the register – save people’s lives

by **Andy Morris**  
andy.morris@bullivantmedia.com

**DOCTORS in the Midlands are urging more people to agree to become organ donors amid a shortage which is causing a backlog of patients waiting for life-saving surgery.**

More than 1,500 people in the region are waiting for an organ transplant and the number of people in the area who have registered on the NHS Organ Donor Register (ODR) is one of the lowest in the country.

Just over one in three Midlands folk have expressed a decision to be a donor by registering on the ODR but that is proportionally the second lowest rate in the country and below the English average.

Despite a change in the law meaning it is assumed people will be donors unless they opt out, families are still involved in conversations about organ donation and make the final decision about whether it can go ahead.

Statistics show families are significantly more likely to support their loved one’s decision to be a donor when their relative has expressed their decision so it’s important for people who want to donate organs to register on the ODR.

In the Midlands, only just over half of families consulted about donation when their loved one dies, support it going ahead. That is the third lowest consent rate in England.

In 2024-2025, 64 people from the

Midlands died while waiting for an organ transplant and 703 people in the area have died waiting in the last decade.

Matthew Smith, 53, received a life-saving double lung transplant earlier this year, after 10 months on the waiting list and 18 months on oxygen, as a result of idiopathic pulmonary fibrosis.

He said: “I feel extremely lucky that a family decided to donate when they did and that they have given me a second chance at life, because my wife and I truly thought that she would be losing me this year and that is something really difficult to come to terms with.”

### Limbo

“The wait for a transplant is awful. You feel in limbo, there’s nothing you can do and you also can’t live your life in the way you want to.”

“The harsh reality is that you are waiting for somebody to die, and that’s really difficult.”

“Although I only had my transplant a short while ago, and I’m still in recovery, I’m already feeling the benefits of the tremendous gift I’ve been given by my donor. I can now breathe without an oxygen tank, which is the strangest sensation but so liberating. I’m beginning to feel that my dream of being able to go back to somewhat normal life might be within reach. I’ll be able to spend more time with my children and grandchildren, I might one day be able to go abroad with my wife again, do all of those things that we take for granted.

I want to carry my donor’s legacy on by living the best life that I can.

“Organ donation is the most incredible gift. If more people registered their decision and left their families certain about what they want when they die, more people like me would benefit from these gifts, too. I’d encourage all of the people of the Midlands to think about what they might want and to register that decision formally on the Organ Donor Register. It takes no time at all and can have a huge impact.”

Anthony Clarkson, director of organ and tissue donation and transplantation at NHS Blood and Transplant, said: “I’m extremely pleased to hear that Matthew got the transplant he needed, thanks to a family who made the most generous of decisions during a very difficult time. We cannot send enough thanks to this family – and the many like them – and I wish Matthew well in his recovery.”

“The sad reality is that throughout the Midlands, there are over 1,500 people still waiting for that call and, sadly, we just don’t have enough donors to get everybody the transplant that they need.”

“We can change that if more people consider their wishes around organ donation and then register their decision on the NHS Organ Donor Register. By doing so, you’ll leave your family in no doubt about what it is you want, and you could save up to nine lives.”

Visit [organdonation.nhs.uk](http://organdonation.nhs.uk), call 0300 123 23 or use the NHS app for more information and to register an organ and tissue donation decision.



**Matthew Smith, 53, received a life-saving double lung transplant earlier this year, after 10 months on a waiting list. s**

## Enjoy Exclusive, Evergreen Spring Edition of

## Seasons



Following on from the fantastic response to our debut 'Winter' edition of Seasons, we're delighted to announce that Seasons 'Spring' edition has now Sprung.

As the days grow longer and our towns, villages and the countryside emerge from the long dark days of winter, we are all enjoying the arrival of the 'Spring' of 2026.

Pick up a copy locally for free, or simply browse on line  
[www.seasons-magazine.com](http://www.seasons-magazine.com)

The 'Spring' edition of Seasons is a celebration of all things 'local'. It's uplifting, inspiring and quintessentially local across the three counties of Warwickshire, Worcestershire and the West Midlands.

The beautifully glossy A5 magazine is freely available in print, from a major supermarket near you - and, the 'Spring' edition of Seasons is also available 24/7 on line and...it's being showcased across all of our local Observer and Standard Newspapers, websites and social media platforms, and will continue to be so, for the next 12 months.

Enjoy the exclusive, evergreen, 'Spring' edition of Seasons by logging on to [www.seasons-magazine.com](http://www.seasons-magazine.com)

You can still browse the 'Winter' edition of Seasons 24/7 and now, you can enjoy the 'Spring' edition of Seasons too!

If you'd like your business to be featured in the next edition of Seasons, or if you'd like more details - just call **01527 588688** and speak to Kelly, Caroline, Roisin, Debra, Paul, Gareth or Sharon.

Seasons magazine is brought to you, by your local Observer and your local Standard Newspaper Team

# Not concentrating could leave you on track for disaster says campaign

PEOPLE in the West Midlands have a dangerous overconfidence surrounding the risks when using railway level crossings.

Network rail said a survey revealed over eight in ten say they are confident they know the dangers – but only three per cent actually understand how long it takes an approaching 80mph train to stop.

And 14 per cent don't consider removing headphones when at a level crossing.

The findings come as Network Rail, British Transport Police (BTP) and the wider rail community came together to launch the first industry-wide level crossing campaign to raise awareness of the dangers around level crossings – called No Second Chances.

No Second Chances – primarily aimed at 18-34-year-olds through a series of three uncompromising 20-second films – raises awareness of the dangers of not using a level crossing properly and the consequences of being distracted.

Distraction is a common risk at level crossings, particularly among adults aged 18 to 34, who are more likely to admit to behaviours that reduce awareness of their surroundings.

The No Second Chances campaign marks a new joined-up way of working for the rail sector on safety communications, ahead of the establishment of Great British Railways (GBR).



The survey revealed 63 per cent of residents feel confident they could move out of the way in time if a train appeared while they were crossing.

But 96 per cent don't realise that it takes approximately one mile for a train travelling at 80mph to come to a complete emergency stop – and that's not the fastest a train can travel on the network.

Anthony Bonell, level crossing

manager for Network Rail Central route, said: "Across the West Midlands and beyond, level crossings are part of everyday journeys – to work, to school, and out with friends. But it only takes one missed warning or one moment of distraction for things to go wrong, because trains can be on you far quicker than you think and they need a long distance to come to a stop.

"We're hoping the newly launched

No Second Chances campaign helps those messages cut through. When you reach a crossing, slow down, give it your full attention, and make sure you've clearly checked it's safe before you step or drive onto the crossing.

"Waiting a few extra seconds is always better than taking a risk."

Chief Inspector Joseph Gorman, British Transport Police, said: "Everyone, pedestrians and driv-

ers alike, should pay extra care and attention to level crossings as the consequences for any misuse can be catastrophic.

"You might think you're simply saving some time, but if you miss or deliberately ignore the warning signs then you could be placing yourself or others in incredibly serious danger, and that is never worth it.

"We respond to incidents at level crossings every month, and through patrols, CCTV, and close work with our Network Rail partners, we will always seek to prosecute serious offences to deter misuse. Please think wisely as you approach level crossings, be patient, and don't take any risks."

There are around 6,000 level crossings in operation across the country, and each is different depending on its surroundings and usage.

These include crossings which range from footpaths requiring users to stop, look and listen for approaching trains before deciding if it safe to cross, through to those with full barriers, audible alarms, and road traffic light signals on public roads.

Across the West Midlands and surrounding areas, there were 217 level crossing incidents recorded in the last 12 months, including 13 classed as 'near misses'.

For more visit [www.networkrail.co.uk/communities/safety-in-the-community/safety-campaigns/no-second-chances/](http://www.networkrail.co.uk/communities/safety-in-the-community/safety-campaigns/no-second-chances/)



## Helping You Resolve *Inheritance* Disputes.

Straightforward and compassionate

legal support for Will & estate disputes.

Need *legal* guidance?  
Contact us for expert advice today.

0121 233 4333  
wilkes.co.uk

Your legal partner  
for all things in *life*.





# A Seasonal Guide to Revitalising Your Space

**SPRING is a time of renewal and rejuvenation, making it the perfect season to tackle various tasks around the home and garden.**

As warmer temperatures set in and nature reawakens, homeowners can take advantage of this opportunity to enhance their living environments. In this guide, we'll explore a multitude of jobs that can be undertaken to ensure your home and garden are ready for the warmer months, focusing on maintenance, organisation, and cultivation.

## Spring Cleaning: Refreshing Your Home

One of the first and most important tasks in the spring season is to conduct a thorough spring cleaning. This involves more than just your regular cleaning routine; it's about

deep cleaning every nook and cranny of your home.

- **Decluttering:** Begin by sorting through your belongings. Gather items that you no longer need or use and consider donating them or organising a garage sale. This will not only declutter your space but also make your home more inviting.
- **Dust and Clean:** Focus on areas that are often overlooked during routine cleaning, such as ceiling fans, light fixtures, baseboards, and behind appliances. Dust accumulated over the winter can trigger allergies, so a good spring clean can greatly improve your home environment.
- **Windows and Curtains:** Take the time to clean windows inside and out, allowing natural light to stream in. Wash or replace curtains and blinds, as this can instantly refresh a room.



## DO YOU NEED WASTE REMOVED?

HOME, OFFICE, GARAGE, SHED & GARDEN CLEARANCE SPECIALIST



  
**HOUSE  
CLEARANCES**

  
**GARAGE  
CLEARANCES**

  
**GARDEN  
CLEARANCES**



## COVENTRY

CLEARANCE & REMOVALS

Coventry and Surrounding Areas  
FREE No-Obligation Quotes

From full house clearances to garage junk, garden waste, furniture removal and everything in between – Coventry Clearance & Removals provides fast, reliable and affordable clearance services across Coventry and surrounding areas.

- ✓ House Clearances
- ✓ Garage & Shed Clearances
- ✓ Garden Waste Removal
- ✓ Furniture & Appliance Removal
- ✓ Same Day Availability
- ✓ Fully Licensed Waste Carrier

Every job helps make a difference. We proudly donate from every completed clearance job to Zoe's Place Baby Hospice, helping support local children and families in need.



**ZOE'S PLACE**  
— BABY HOSPICE —

No stress. No hidden costs. Just friendly local service you can rely on.

Book your clearance today and support a great local cause at the same time

Waste License number-  
CBDU602550

## Tel: 07871 794316

## www.covclearance.co.uk

Email: [info@covclearance.co.uk](mailto:info@covclearance.co.uk)

# Spring Home and Garden

## Garden Preparation: Embracing Nature's Growth

As the days become longer and warmer, the garden requires attention to prepare for a flourishing summer. Spring is a pivotal time for planting and nurturing your outdoor space.

- **Soil Preparation:** Start by inspecting your garden beds. Clear away any debris, weeds, or dead plants from the winter months. Consider testing your soil's pH and nutrient levels, as this will help you determine what amendments may be necessary to promote healthy

plant growth.

- **Planting:** Spring is ideal for planting a variety of flowers, vegetables, and herbs. Depending on your local climate, consider sowing seeds for vegetables such as peas, lettuce, and spinach. In terms of flowers, hardy annuals and perennials can be planted to bring a burst of colour to your garden.
- **Mulching:** Once your plants are in place, apply a layer of mulch to help retain soil moisture and suppress weeds. This will also give your garden beds a tidy appearance.



## Lawn Care: Reviving Your Green Space

The lawn often requires extra care in the spring to ensure it remains lush and green throughout the growing season.

- **Mowing and Edging:** As the grass begins to grow, a regular mowing schedule will help keep it at an appropriate height. Additionally, edging the lawn can create a polished look and define borders

between lawn and garden beds.

- **Overseeding:** Consider overseeding your lawn with a good quality grass seed to fill in thin or bare patches. This promotes a thicker, healthier lawn that is more resistant to pests and disease.
- **Fertilising:** Spring is the perfect time to fertilise your lawn, as it will stimulate growth. Choose a slow-release fertiliser suitable for your specific type of grass.

# For all your Roofing and Roofline needs...



**Big enough to cope, small enough to care.**



**42nd Year in Business**

Your local family run business established in 1983 by Roger Smith. His wife Ann headed the office, now run by daughter Donna. Sons; Craig and Marcus can be found at work on site, as well as providing your free, no obligation quotations.

All of our work is guaranteed, so your home is safe in our hands.

To find out more about our history, view recent pictures and customer feedback, please visit our website or Facebook page.



UPVC Fascia, Barge, Soffit & Guttering



Mock Tudor/ Replica Wood Boards



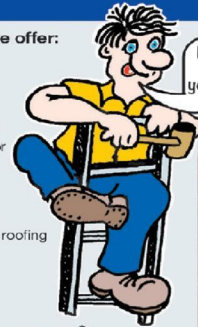
Cladding



Equinox® Tiled Conservatory Roof System

### Products and Services we offer:

- Fascias/ Barge boards/ Soffits/ Guttering/Dry Verge
- Carports/ Over door canopies/ PVCu doors
- Composite doors/Garage doors
- Concrete (Finklock) gutter lining or removal
- Cladding including textured timber effect (Fortex)
- Flat to pitched roof conversions
- Polycarbonate roofing/ Plastisol roofing
- Rubberbond fleecebacked or Single ply roofing
- Fibre cement roofing sheets
- Mock Tudor Planks



Dry Verge & Dry Ridge System



Rubberbond® FleeceBack™ EPDM Roofing



To find out more...  
**02476 494 491**

[www.rogersmithinstallations.co.uk](http://www.rogersmithinstallations.co.uk)

[rogersmithinstallations@yahoo.co.uk](mailto:rogersmithinstallations@yahoo.co.uk)

[facebook.com/rogersmithinstallations](https://www.facebook.com/rogersmithinstallations)



# Roger Smith Installations



# Exclusive Invitation: Meet the Specialist

Do you have hand or wrist pain?

Receive a free 1:1 mini-consultation with Consultant Hand & Wrist Surgeon Mr Shyamalan to discuss your hand or wrist concerns, as part of our hand health information evening.

- ✓ 1:1 mini consultation
- ✓ Expert guidance
- ✓ Zero cost
- ✓ Refreshment included

<h1>3</h1> <p>June 2026</p>	<p>6pm - 8pm</p>	<p>Silhillians Sports Club</p>
---------------------------------	----------------------	------------------------------------

[www.midlandhandclinic.com](http://www.midlandhandclinic.com)



# Classified

TELEPHONE 01527 588688 FACSIMILE 01527 584371

## PUBLIC NOTICES

### PUBLIC NOTICES

#### Warwickshire County Council

##### ROAD TRAFFIC REGULATION ACT 1984

Warwickshire County Council has made the following Temporary Traffic Orders:

##### ELL LANE, BRINKLOW

**Order Effect:** Road closed to vehicular traffic.  
**Reason for Order:** To enable boundary box installation & associated works.

**Order Commences:** 4 June 2026 for up to 18 months.  
**Anticipated Completion:** 5 June 2026.

**Access & Diversion:** The Crescent, Broad Street, Rugby Road, Ell Lane and vice versa.  
**Contractor:** Chevron TM Ltd, Tel: 0330 008 0820.

Warwickshire County Council proposes to make the following Temporary Traffic Orders:

##### HIGH STREET (SERVICE ROADS), RUGBY

**Order Effect:** High Street Service Roads, Rugby closed to vehicular traffic. In addition, vehicular traffic will be prohibited from making a Right Turn and a Left Turn from High Street, Rugby onto High Street Service Roads.

**Reason for Order:** To enable repair/replacement of defective manhole covers and frame.

**Order Commences:** 17 May 2026 for up to 18 months.  
**Anticipated Completion:** 17 May 2026.

**Access & Diversion:** Traffic flow along the main High Street Rugby will be maintained under signals.  
**Contractor:** CSP, Tel: 07918 389363.

For all of the above temporary orders, pedestrian access to and egress from properties and land situated adjacent to the length of road to be closed will be maintained at all times. Vehicular access will be maintained where possible.

To report any problems with these works or for further details of our current & planned roadworks visit our website [www.warwickshire.gov.uk/roadworksmap](http://www.warwickshire.gov.uk/roadworksmap) or call us 01926 412515.

#### WARWICKSHIRE COUNTY COUNCIL ROAD TRAFFIC REGULATION ACT 1984 THE WARWICKSHIRE COUNTY COUNCIL (BARBY ROAD AND ONLY LANE, DUNCHURCH) (40 MPH SPEED LIMIT) ORDER 2026

Warwickshire County Council proposes to make the above-named Order, pursuant to the Road Traffic Regulation Act 1984, the effect of which would be to reduce the existing national speed limit to 40 mph on those lengths of road which are described in the Schedule below.

A copy of the proposed Order, together with a plan showing the lengths of road affected and a statement of the Council's reasons for proposing to make the Order, may be inspected at the Main Reception, Shire Hall, Market Place, Warwick during usual opening hours, or online at <https://www.warwickshire.gov.uk/news/20208/rugby-borough>

Any objections or representations to the proposals, which must be in writing and specify the grounds on which they are made, should be addressed to Chris Gildes, County Highways Minor Works, Shire Hall Post Room, Rear of Shire Hall, Northgate Street, Warwick, CV34 4RL, or sent by email to [chminorworks@warwickshire.gov.uk](mailto:chminorworks@warwickshire.gov.uk) using the subject heading "Barby Road/Only Lane". (Objections, representations, and the name of the objector or person making a representation, will normally be treated as public information and may be published. For further information on how Warwickshire County Council processes personal data please refer to the Customer Privacy Notice which is available at <https://www.warwickshire.gov.uk/privacy>). Objections and representations must be sent so as to be received by 5 June 2026.

##### SCHEDULE

**Barby Road, Dunchurch**  
From its junction with the B4426 Ashlawn Road, north-westwards for a distance of 88 metres.

**Only Lane, Dunchurch**  
From its junction with the B4426 Ashlawn Road, south-eastwards for a distance of 96 metres.

**S Duxbury, Director of Strategy, Planning & Governance, Shire Hall, Warwick CV34 4RL**

#### WARWICKSHIRE COUNTY COUNCIL ROAD TRAFFIC REGULATION ACT 1984 THE WARWICKSHIRE COUNTY COUNCIL (BOROUGH OF RUGBY) (CIVIL ENFORCEMENT AREA) (WAITING RESTRICTIONS, ON-STREET PARKING PLACES AND RESIDENTS' PARKING) (CONSOLIDATION) (VARIATION NO. 14) ORDER 2026

Warwickshire County Council proposes to make the above-named Order, pursuant to the Road Traffic Regulation Act 1984, the effect of which will be to vary the existing Warwickshire County Council (Borough of Rugby) (Civil Enforcement Area) (Waiting Restrictions, On-Street Parking Places and Residents' Parking) (Consolidation) Order 2017 (as varied) as described in the Schedule below.

A copy of the proposed Order, together with a plan showing the lengths of road affected and a statement of the Council's reasons for proposing to make the Order are available to view at Shire Hall, Market Place, Warwick, and online on the Council's website at <https://www.warwickshire.gov.uk/news/20208/rugby-borough>

Any objections or representations to the proposals, which must be in writing and specify the grounds on which they are made, should be addressed to Phil Mitton, County Highways, Minor Works Team, Shire Hall Post Room, Rear of Shire Hall, Northgate Street, Warwick, CV34 4RL, or sent by email to [pmc@warwickshire.gov.uk](mailto:pmc@warwickshire.gov.uk) using the subject heading "Rugby CPE V13 - Regent Place" as the subject header (Objections, representations, and the name of the objector or person making a representation, will normally be treated as public information and may be published. For further information on how Warwickshire County Council processes personal data please refer to the Customer Privacy Notice which is available at <https://www.warwickshire.gov.uk/privacy>). Objections and representations must be sent so as to be received by 08 June 2026.

##### SCHEDULE 1

##### Proposed R0 Residents' Permit exemptions

**Regent Place, Rugby**  
Pay and display, Monday - Saturday, 8am - 6pm, 2 Hours No Return in 4 Hours. Except Permit Holders R0 West side, from a point 14 metres south of its junction with Regent Place (east to west section), southwards for a length of 67 metres

**S Duxbury, Director of Strategy, Planning & Governance, Shire Hall, Warwick CV34 4RL** Date 14 May 2026

(by approximate measurements) on the lengths of road described in Schedule 1 below.

A copy of the proposed Order, together with a copy of the Order to be varied, plans showing the lengths of road affected and a statement of the Council's reasons for proposing to make the Order are available to view at Shire Hall, Market Place, Warwick, and online on the Council's website at <https://www.warwickshire.gov.uk/news/20208/rugby-borough>

Any enquiries relating to the proposals may be made to Phil Mitton, Communities Directorate, Warwickshire County Council (tel. no. 01926 412142). Any objections or representations to the proposals, which must be in writing and specify the grounds on which they are made, should be addressed to Phil Mitton, County Highways, Minor Works Team, Shire Hall Post Room, Rear of Shire Hall, Northgate Street, Warwick, CV34 4RL, or sent by email to [pmc@warwickshire.gov.uk](mailto:pmc@warwickshire.gov.uk) using the subject heading "Rugby CPE V14 - Hollowell Way" as the subject header (Objections, representations, and the name of the objector or person making a representation, will normally be treated as public information and may be published. For further information on how Warwickshire County Council processes personal data please refer to the Customer Privacy Notice which is available at <https://www.warwickshire.gov.uk/privacy>). Objections and representations must be sent so as to be received by 08 June 2026.

##### SCHEDULE 1

##### Proposed No Waiting At Any Time

**Hollowell Way, Rugby**

- (i) South side, from a point 36 metres east of its junction with Wetherell Way, eastwards for 39 metres
- (ii) North side, from a point 34 metres east of its junction with Wetherell Way, eastwards for 39 metres

**S Duxbury, Director of Strategy, Planning & Governance, Shire Hall, Warwick CV34 4RL**

#### WARWICKSHIRE COUNTY COUNCIL ROAD TRAFFIC REGULATION ACT 1984 THE WARWICKSHIRE COUNTY COUNCIL (BOROUGH OF RUGBY) (CIVIL ENFORCEMENT AREA) (WAITING RESTRICTIONS, ON-STREET PARKING PLACES AND RESIDENTS' PARKING) (CONSOLIDATION) (VARIATION NO. 13) ORDER 2026

Warwickshire County Council proposes to make the above-named Order, pursuant to the Road Traffic Regulation Act 1984, the effect of which will be to vary the existing Warwickshire County Council (Borough of Rugby) (Civil Enforcement Area) (Waiting Restrictions, On-Street Parking Places and Residents' Parking) (Consolidation) Order 2017 (as varied), by introducing R0 Residents' Permit exemptions to a section of existing pay and display parking in Regent Place, Rugby, as described (by approximate measurements) in Schedule 1 below.

A copy of the proposed Order, together with a copy of the Order to be varied, plans showing the lengths of road affected and a statement of the Council's reasons for proposing to make the Order are available to view at Shire Hall, Market Place, Warwick, and online on the Council's website at <https://www.warwickshire.gov.uk/news/20208/rugby-borough>

Any enquiries relating to the proposals may be made to Phil Mitton, Communities Directorate, Warwickshire County Council (tel. no. 01926 412142). Any objections or representations to the proposals, which must be in writing and specify the grounds on which they are made, should be addressed to Phil Mitton, County Highways, Minor Works Team, Shire Hall Post Room, Rear of Shire Hall, Northgate Street, Warwick, CV34 4RL, or sent by email to [pmc@warwickshire.gov.uk](mailto:pmc@warwickshire.gov.uk) using the subject heading "Rugby CPE V13 - Regent Place" as the subject header (Objections, representations, and the name of the objector or person making a representation, will normally be treated as public information and may be published. For further information on how Warwickshire County Council processes personal data please refer to the Customer Privacy Notice which is available at <https://www.warwickshire.gov.uk/privacy>). Objections and representations must be sent so as to be received by 08 June 2026.

##### SCHEDULE 1

##### Proposed R0 Residents' Permit exemptions

**Regent Place, Rugby**  
Pay and display, Monday - Saturday, 8am - 6pm, 2 Hours No Return in 4 Hours. Except Permit Holders R0 West side, from a point 14 metres south of its junction with Regent Place (east to west section), southwards for a length of 67 metres

**S Duxbury, Director of Strategy, Planning & Governance, Shire Hall, Warwick CV34 4RL** Date 14 May 2026

### PUBLIC NOTICES



#### ROAD TRAFFIC REGULATION ACT 1984 - SECTIONS 14(1)(a) AND (7) THE A45 AND A46 TRUNK ROADS AND THE M69 MOTORWAY (BAGINTON TO ANSTY) (TEMPORARY PROHIBITION OF TRAFFIC) ORDER 2026

NOTICE IS HEREBY GIVEN that National Highways Limited (Company no. 9346363) intends to make an order on the A45 and A46 Trunk Roads and the M69 Motorway between Baginton and Ansty in the City of Coventry and in the County of Warwickshire, to allow drainage works to be carried out.

The effect of the Order will be to close, at different times -

- (1) the southbound carriageway of the M69 from its junction with the link road leading to the northbound carriageway of the M6 at Junction 2, to its junction with the A46, near Ansty;
- (2) the northbound carriageway of the M69 from its junction with the A46, near Ansty, to its junction with the link road that leads from the southbound carriageway of the M6 at Junction 2, and from the roundabout at Junction 2;
- (3) the northbound carriageway of the A45 from its junction with the exit slip road leading to the roundabout junction with the A46 slip roads, Siskin Drive and the B4110 (Tollbar End Roundabout), to its junction with the A46 at the centrepiece of Tollbar End Roundabout;
- (4) the northbound carriageway of the A46 from its junction with the A45 at the centrepiece of Tollbar End Roundabout, to its junction with entry slip road leading from the roundabout junction with the A428 (Binley Roundabout), at Binley Woods;
- (5) the northbound carriageway of the A46 from its roundabout junction with the B4082, near Binley Woods, to its junction with the M69, near Ansty;
- (6) the southbound carriageway of the A46 from its junction with the M69, near Ansty, to its roundabout junction with the B4082, near Binley Woods;
- (7) the southbound carriageway of the A46 from its junction with the exit slip road leading to Binley Roundabout, to its junction with the A45 at the centrepiece of Tollbar End Roundabout;
- (8) the southbound carriageway of the A45 from its junction with the A46 at the centrepiece of Tollbar Road Roundabout, to its junction with the link road leading from Firefly Road, near Baginton;
- (9) the link road leading from the northbound carriageway of the A46 to the westbound carriageway of the A46 Coventry Eastern Bypass, near Ansty;
- (10) the link road leading from the eastbound carriageway of the A46 Coventry Eastern Bypass, to the southbound carriageway of the A46, near Ansty;
- (11) the link road leading from the westbound carriageway of Central Boulevard, to the link road described in (10) above;
- (12) any slip road leading to or from Tollbar End Roundabout, to or from the A45 or A46;
- (13) any slip road leading to or from Binley Roundabout, to or from the A46;
- (14) the link road leading from the westbound carriageway of the A45 to Firefly Road, near Baginton;
- (15) the link road leading to the westbound carriageway of the A45 from Firefly Road, near Baginton;
- (16) the slip road leading to the eastbound carriageway of the A45 from the roundabout junction with Leaf Lane and the slip roads leading to and from the A444 and the A46 (Stivichall Interchange);
- (17) the slip road leading from the westbound carriageway of the A45 to Stivichall Interchange;
- (18) the link road leading from the southbound carriageway of the M69, to the northbound carriageway of the M6 at Junction 2.
- (19) any layby adjacent to the lengths of the A45 and the A46 described in (3), (4), (5), (6), (7) and (8) above.

The works will be carried out overnight between 21:00 hours and 06:00 hours and are expected to start on Wednesday 3 June 2026 and continue for approximately ten weeks. The layby closures will be in operation from 21:00 hours on Thursday 11 June 2026, for twenty-four hours per day, for the duration of the works. The Order will come into force on 27 May 2026.

Vehicles being used for police, fire and rescue authority or ambulance purposes and vehicles being used in connection with the works will be exempt from the closures.

Diversion routes via the B4110 and the A428 and vice versa; and via the B4110, the B4082 and the A444 will be signed.

For further information please contact Dan Bothwick on 07743193672.

**Karen Eustance**, an officer in National Highways Limited. National Highways Limited (Company no. 9346363) registered office: Three Snowhill, Snow Hill Queensway, Birmingham, B4 6GA. A Company registered in England and Wales.

### PUBLIC NOTICES

#### PUBLIC NOTICE OF AN APPLICATION FOR A PREMISES LICENCE UNDER SECTION 17 OF THE LICENSING ACT 2003

Notice is hereby given that an application was made to WARWICKSHIRE DISTRICT COUNCIL for a premises licence under the above Act on the 7TH MAY 2026. Applicant: SHELL UK OIL PRODUCTS LIMITED

Address of premises: SHELL HATTON, 383 BIRMINGHAM ROAD, BUDBROOKE, WARWICK, CV35 7DZ.  
Proposed licensable activities: SALE OF ALCOHOL FOR CONSUMPTION OFF THE PREMISES AND THE PROVISION OF LATE-NIGHT REFRESHMENT  
Proposed days and hours of licensable activity: ALCOHOL SALES - MONDAY TO SUNDAY 00:00 TO 00:00 HOURS AND THE PROVISION OF LATE-NIGHT REFRESHMENT - MONDAY TO SUNDAY 23:00 TO 05:00 HOURS EACH DAY.

Any responsible authority or any other person wishing to make representations on the matter must submit those representations in writing to LICENSING TEAM, WARWICK DISTRICT COUNCIL, TOWN HALL, PARADE, ROYAL LEAMINGTON SPA, WARWICK, CV32 4AT or email [licensing@warwick.gov.uk](mailto:licensing@warwick.gov.uk). Representations must be received by 4TH JUNE 2026. A copy of the application for the grant of the above licence is kept by the Licensing Authority at the above address. The application can be viewed Monday to Thursday 9.00 am to 5.00 pm, and 9.00 am to 4.30 pm on Fridays, except Bank Holidays.

It is an offence to make a false statement in connection with an application and those who make a false statement may be liable on summary conviction to an unlimited fine.  
Lockett & Co - duly authorised agents

### PUBLIC NOTICES

#### PUBLIC NOTICE

##### Notice of Application for Hazardous Substances Consent

The Planning (Hazardous Substances) Act 1990 The Planning (Hazardous Substances) Regulations 2015 Notice is hereby given that Iron Mountain (UK) PLC has applied to Rugby Borough Council for Hazardous Substances Consent for storage of products classified as flammable aerosols as defined in Schedule 1 of the Planning (Hazardous Substances) Regulations 2015.

The site is located at Iron Mountain (UK) PLC, Unit 3, Rugby Symmetry Park, Rugby, CV23 9LP. Members of the public may inspect a copy of the application at Iron Mountain (UK) PLC, Unit 3, Rugby Symmetry Park, Rugby, CV23 9LP within 21 days of the date of this notice. The Hazardous Substances Authority (Rugby Borough Council, from which relevant information can be obtained), will decide whether or not to grant consent, and if to grant, will decide under what conditions that grant consent.

Any person wishing to make representations about this application (including comments or questions) should do so in writing within 21 days of the date of this notice to:

Planning Services  
Rugby Borough Council  
Planning Department  
Town Hall, Evreux Way  
Rugby CV21 2RR  
or via email: [rbc.planning@rugby.gov.uk](mailto:rbc.planning@rugby.gov.uk)

Signed: Tomas Bernath *Tomas Bernath*  
Date: 05/05/2026

### PUBLIC NOTICES

#### Goods Vehicle Operator's Licence

Opifex Ltd of JWS Hopper Hill Road, Eastfield, Scarborough, North Yorkshire, England, YO11 3YS is applying to change an existing licence as follows: To keep an extra 2 vehicles and 2 trailers at the operating centre Unit 7, Home Farm, Compton Verney, Warwick, CV35 9HJ.

Owners or occupiers of land (including buildings) near the operating centre(s) who believe that their use or enjoyment of that land would be affected, should make written representations to the Traffic Commissioner at Quarry House, Quarry Hill, Leeds, LS2 7UE, stating their reasons, within 21 days of this notice. Representatives must at the same time send a copy of their representations to the applicant at the address given at the top of this notice. A Guide to Making Representations is available at [www.gov.uk/object-hgv-operator-licence](http://www.gov.uk/object-hgv-operator-licence).

### PUBLIC NOTICES

#### Goods Vehicle Operator's Licence

KW Joy Ltd of 83 Plantashill Crescent, Coventry, CV4 9RD is applying to change an existing licence as follows. To keep an extra 3 goods vehicles and 0 trailers at the operating centre Mitchell Potatoes Ltd, Boots Farm, Straight Mile, Bourton-on-Dunsmore, Rugby, CV23 9DU. Owners or occupiers of land (including buildings) near the operating centres who believe that their use or enjoyment of that land would be affected, should make written representations to the Traffic Commissioner at Quarry House, Quarry Hill, Leeds, LS2 7UE stating their reasons, within 21 days of this notice. Representatives must at the same time send a copy of their representations to the applicant at the address given at the top of this notice. A Guide to Making Representations is available at [www.gov.uk/government/publications/a-guide-to-making-representations-objections-and-complaints-goods-vehicle-operator-licensing](http://www.gov.uk/government/publications/a-guide-to-making-representations-objections-and-complaints-goods-vehicle-operator-licensing).

### PUBLIC NOTICES

#### JUNE LOUISA MANN (Deceased)

Pursuant to the Trustee Act 1925 any persons having a claim against or an interest in the Estate of the above named, late of 182 Ansty Road, Coventry, CV2 3EX, who died on 05/03/2022, are required to send written particulars thereof to the undersigned on or before 16/07/2026, after which date the Estate will be distributed having regard only to the claims and interests of which they have had notice.

**KUMBERT SOLICITORS LLP**  
4 The Quadrant Coventry CV1 2EL

### PUBLIC NOTICES

#### ALBERT ANDREW WOOTTON (Deceased)

Pursuant to the Trustee Act 1925 any persons having a claim against or an interest in the Estate of the above named, late of 1000 Manor Green, Rugby Road, Coventry CV6 3RH, who died on 12/11/2022, are required to send written particulars thereof to the undersigned on or before 16/07/2026, after which date the Estate will be distributed having regard only to the claims and interests of which they have had notice.

**Angels Solicitors LLP**, 117-119 New Street Coventry CV1 2NY

### PUBLIC NOTICES

#### Goods Vehicle Operator's Licence

MSB Transport Ltd of 3 Canalside, Coventry, CV6 6RB is applying to change an existing licence as follows: to add an operating centre to keep 1 goods vehicles and 0 trailers at Site 7, Bedworth Road, Coventry, CV6 6JF. Owners or occupiers of land (including buildings) near the operating centre who believe that their use or enjoyment of that land would be affected, should make written representations to the Traffic Commissioner at Quarry House, Quarry Hill, Leeds, LS2 7UE stating their reasons, within 21 days of this notice. Representatives must at the same time send a copy of their representations to the applicant at the address given at the top of this notice. A Guide to Making Representations is available from the Traffic Commissioner's Office.

To advertise call 01527 588688



## Public Notices

# Classified

TELEPHONE 01527 588688 FACSIMILE 01527 584371

## PUBLIC NOTICES

**Rugby Borough Council  
Town and Country Planning  
Act 1990 (as amended)**

**Application Number R26/0340  
LAND AT PADGE HALL FARM, WATLING  
STREET, BURBAGE**

Variation of Condition 24 of R24/0081 (Erection of distribution and industrial buildings (Use Class B2 and B8) including ancillary offices and associated earthworks, infrastructure and landscaping, and highways improvements) to allow the re-phasing of highways works. This application is accompanied by an Environmental Statement. This development is a departure from the Development Plan. This development may affect a Public Right of Way. This is a major development

**Application Number R26/0373  
30, Village House, The Green, Rugby**

Proposed new entrance door to existing retail unit. This development may affect a Conservation Area

**Application Number R26/0388  
MACREADY THEATRE, LAWRENCE  
SHERIFF STREET, RUGBY, CV22 5EJ**

Listed building consent for internal alterations, widening existing openings and new walling. This development may affect a Listed Building. This development may affect a Conservation Area

**Application Number R26/0430  
LAND SOUTH OF COVENTRY ROAD  
AND CAWSTON LANE, COVENTRY  
ROAD, RUGBY** Variation of condition 1 of R24/0971 - 9 affordable housing units (consisting of 8 no. Affordable Rented and 1 no. Shared Ownership) This development may affect a Listed Building. This development may affect a Public Right of Way. This is a major development

Members of the public may inspect copies of the application, the plans and documents submitted with it online at: [www.planningportal.rugby.gov.uk](http://www.planningportal.rugby.gov.uk) or in an electronic form at: Town Hall, Evreux Way, Rugby CV21 2RR between the hours of 9.00 am and 5.00 pm Monday to Friday until 06 June 2026. Please note a planning officer would not be present.

If you wish to make an appointment to discuss the application, please contact the case officer.

Any person who wishes to make representation to the above mentioned Council about the applications should make them online [www.planningportal.rugby.gov.uk](http://www.planningportal.rugby.gov.uk) (search for application number and select comment) - or in writing by that date to Chief Planning Officer, Town Hall, Rugby, CV21 2RR.

If an application is determined by the Planning Committee, members of the public may have the opportunity to speak at the meeting. More details about public speaking are available from the Council or on-line at: [www.rugby.gov.uk/speakingatplanning](http://www.rugby.gov.uk/speakingatplanning)

For householder or minor commercial applications, in the event of an appeal against a refusal of planning permission, dealt with on the basis of representations in writing, any representations made will be sent to the Secretary of State, and there will be no further opportunity to comment at the appeal stage.

**Nicola Smith – Strategic Director for Place**

## PUBLIC NOTICES

Keeping you up to date with all the latest information on  
**Planning Proposals, Traffic Notices,  
 Goods Vehicle Operator Licences,  
 Licences To Sell Alcohol,  
 Probate Notices.....**

## SALES & WANTS

### MISCELLANEOUS

**BEDS NEW** Doubles £95 Singles £59 King size £159. Second hand doubles £49 Singles £29 Fridges £49 Freezers £59 Can deliver 07703 925662

**RECLINER CHAIR** electric rise & recline £169 Manual recline chair £60 High seated chair £40 Can deliver 07703 925662

**SOOTY & Sweep** cookie jar or biscuit barrel £25 07719695685

**VERY old** 1930's chair in ex cond £50 07719695685

**BATH tub with taps** Ex cond FREE 07719695685

**STONE** hot water bottle £20 07719695685

**NURSING chair** £20 07719695685

**ABSTRACT** plaque for wall £20 07719695685

**COPPER** wall plaque £20 07719695685

**LADIES** Joules wellingtons, As new, Navy with large dark pink flowers, tough polyurethane, will never split like rubber. size 8 (41) more like 7. £12. 0121 430 3880

**COTSWOLD Estates** Sandringham waterproof long mac for walking / riding. Size 12. Dark green. Check lining. Hood. Rear vent. Shoulder cape. Cost £89.99 sell £35. 0121 430 3880

**DORMA** curtains / bedding bright colours £25 ono 01527 893603

**EXERCISE** bike good condition not needed £20 ono 01527 893603

**DORMA** bedding, curtains, lampshades some unused various sizes not needed reasonable offer 01527 893603

**LARGE** BBO on wheels with gas bottle good condition £60 01527 465036

**DAWS** Ladies seven speed Ladies shopping bike in excellent condition £75 07900848170

**RALEIGH** Chimera 16 speed racing bike in good mechanical condition £35 07900848170

### MISCELLANEOUS

**BACHMANN** 00 gauge steam locomotive tender (Ref 31-551) V2 Class in BR lined black "GREEN ARROW" running no 60800. In excellent unmarked condition, test run only otherwise unused. e / w original box. £35 Tel 07415322794

**HOMCOM** mini exercise bike for leg fitness cardio work out, with 8 levels of magnetic leg resistance and LCD display feature. Little used and in excellent condition. Cost £90 will accept £35 Tel 07415322794

**HORNBY** 00 gauge steam locomotive + tender BR Class 9F in black with late crest, running no 92207. Very good unmarked condition and smooth runner. No box. £45 Tel 07415322794

**RUNNER** BEAN Plants, £2. a tray of 12 plants 8 ft x 16 / 18mm canes 75p. 01905 778926

**DENON** DRA-F107 DAB Stereo Receiver, DCD-F107 CD Player, Speakers and User Manual - £120 07871159366

**VINTAGE** Pioneer Turntable PL-Z93 £20 Tel 07871159366

**LEGO** "Notradam Cathedral" £50 Tel: 078377 27454

**HEDGE** Trimmer Bosch Advanced Pro Silent 500 w, 70 cm blade, Corded. £50 Tel: 078377 27454

**REGATTA** Great Outdoors Hydratop navy ladies waterproof jacket, New. Mesh lining. Size 12. £15. Tel. 07840 800965

**D R I Z A - B O N E** Australian dry wax riding coat. Navy, shoulder cape, 12-14, Rear vent for horses rump. Knee length. Lightweight, waterproof. VGC. £60. 07840 800965

**RALEIGH** Trent Tourist Gents bicycle 3 speed, dynamo, new tyres. £180 01527 876942

**QUALCAST** Lawn Mower, with grass box, good working order £20. Tel: 07743 929558

**AS** new pressure for fence painting etc £20 0121 744 7579

## WANTED

### RECORDS WANTED

Cash paid  
 Call Paul or text: 07765 142354 / 01527 893992  
 Or email: [welston@live.com](mailto:welston@live.com)  
 Paul (Albatross & Doomed Records)

## SERVICES

### CONSERVATORIES & GLAZING

## DOUBLE GLAZING REPAIRS

Locks, Hinges, Handles, Glass, Windows or Doors  
 New Doors/Windows  
 Also Supplied/Fitted  
**07973 200 623**

### DRIVEWAYS

## COVENTRY DRIVEWAYS

- Block paving • Slabs • Porcelain Tiles & Sandstone Kits
- Fencing • Gravel • Turf & Artificial Grass
- Decking, Steps and more

7 Years Warranty on all projects  
 Payment only after completion  
**02476 274439 07740 10127**  
[www.spanglefish.com/coventrydriveways](http://www.spanglefish.com/coventrydriveways)

### HOME IMPROVEMENTS

## HANDY MAN

If you're looking for a fast and reliable service  
 Then call Lenny

- Plastering • Plumbing • Fencing
- Gardening • Flooring • Kitchens
- Bathrooms • Carpentry • Flat pack furniture
- Tiling • Painting

**02476 443 996**  
**07794 784 266**  
 NO VAT CHARGE

### KITCHENS

## S.W INSTALLATIONS

### Kitchens & Bathrooms

**FREE DESIGN & QUOTATION**  
 QUALITY KITCHENS & BATHROOMS SUPPLIED & FITTED  
 PLUMBING, CARPENTRY, TILING, WORKTOP & DOOR REPLACEMENT  
 (Supply & fit, supply only or fit only)  
 LOCAL TRADESMAN  
 20YRS EXPERIENCE  
 NO JOB TOO SMALL  
**07971 684 353**

### LOGS

## LOGS FOR SALE

Mainly Ash  
 £120, £220, £390 loads delivered  
 Builders bag of logs £120 delivered  
 Card, cash or cheque payments taken  
**Tel 07477 778536 or 07983 441818**  
 See load sizes at our website  
[www.rbtimbex.uk](http://www.rbtimbex.uk)

## BEST LEAVE IT TO THE EXPERTS



Check out our **Classified pages!**

# Check out our E-Editions!



**Coventry Observer** Upgraded route set to improve

**Rugby & Lutterworth Observer** Izzie di her to

**Leamington Observer** Homes to a re

[www.coventryobserver.co.uk/editions](http://www.coventryobserver.co.uk/editions)  
[www.rugbyobserver.co.uk/editions](http://www.rugbyobserver.co.uk/editions)  
[www.leamingtonobserver.co.uk/editions](http://www.leamingtonobserver.co.uk/editions)

The same paper you love on your **mobile, tablet and computer**

Blake Angliss on the track at Silverstone. Picture courtesy of British GT/Jakob Ebrey Photography.



## Tough start for Angliss in Silverstone opener

**MOTORSPORT:** COVENTRY'S Blake Angliss endured a frustrating start to the 2026 British GT Championship season at Silverstone.

The Coventry driver kicked off his first full season in British GT with the championship's most prestigious race, the Silverstone 500.

Angliss teamed up with British GT debutant Revie Lake in the Silver class racing in Mahiki Racing's McLaren Artura GT4.

However, Angliss's car suffered a sudden loss of power before qualifying which proved an electrical issue and meant the McLaren would line up from the back of the grid for the race.

Angliss charged forward five places on the opening lap before a short safety car period brought a halt to his progress.

He gained two more places to move up to fourth in the GT4 category before Angliss pitted and handed the car over to Lake.

Lake kept the car in contention for a podium finish before a move from a car behind led to heavy contact with the damage bringing an end to Angliss's race.

Angliss said: "It's been an incredibly frustrating weekend. We've had a lot of

speed and potential, but just haven't been able to show it due to multiple factors outside of our control, which is really not how you want to start a season.

"Huge credit to the Mahiki Racing team, they pulled out all the stops, with late nights and lots of hard work to get us on track and capable of fighting at the front.

"We just wish we could have delivered them a big race result to reward their efforts, but that was taken out of our hands.

"While we knew we didn't have the ultimate qualifying pace, we were confident we could get into the top three.

"Therefore, despite starting at the back, I was confident I could make some quick progress and to get up from the back of the grid to fourth inside half an hour was very satisfying.

"That shows the pace is clearly there in myself, Revie and the car, so we'll focus on taking away the positives from the weekend and coming back as a stronger package for Oulton Park next."

The second round of the British GT Championship season takes place at Oulton Park over the weekend of May 23 to 25 later this month.

# Cov blitz Warriors on final day to finish third in table as play-off tie against Hartpury awaits

by Aaron Sutcliffe  
aaron.sutcliffe@bullivantmedia.com

**RUGBY UNION:** DAVID Opoku-Fordjour crossed for a hat-trick as Coventry Rugby ended the season with a dominant 64-28 win against Worcester Warriors.

Opoku-Fordjour scored the game's first try and touched down twice in the second period as Coventry crossed for eight tries at the Nick Newbold Stadium.

Tries from Josh Barton, two from Jack Reeves, Allan Ferrie and Onisivoro Sukani Nayagi ensured Coventry finished the campaign with a sixth successive home victory.

The game proved a straight shootout for third place in the Champ Rugby table as Coventry finished the season on 93 points, just four points behind runners-up Bedford Blues.

And Coventry now head into the end-of-season play-offs with Alex Rae's side to play sixth-placed Hartpury in the quarter-finals at the Nick Newbold Stadium.

Coventry made the perfect start when Opoku-Fordjour scored the game's opening try after just six minutes after Api Bavadra burst through the Worcester line.

And Barton then intercepted Billy Twelvetrees' pass and sprinted the length of the field to dot down four

## Champ Rugby table

	P	W	D	L	PD	PTS
1 Ealing Trailfinders	26	26	0	0	688	127
2 Bedford Blues	26	18	1	7	159	97
<b>3 Coventry</b>	<b>26</b>	<b>16</b>	<b>0</b>	<b>10</b>	<b>330</b>	<b>93</b>
4 Worcester Warriors	26	15	0	11	247	87
5 Chinnor	26	16	0	10	62	82
6 Hartpury RFC	26	15	2	9	140	81
7 Cornish Pirates	26	13	1	12	99	73

minutes later as Josh Thomas converted.

The home side crossed again on 16 minutes as Reeves collected Thomas's looping pass to stroll in unopposed in the corner as the latter added the extras.

However, Worcester responded on 27 minutes when Josh Bassett scored from close range and Twelvetrees converted.

And Warriors reduced the deficit to five points when Bassett crossed for a second try six minutes later as Twelvetrees added the extras.

Coventry extended their lead five minutes into the second period as Opoku-Fordjour made the most of an overlap to score out wide and Thomas converted.

And Opoku-Fordjour completed his hat-trick three minutes later from Senitiki Nayalo's offload as the wing crossed for a treble in his final regu-

lar season fixture for the club.

After Thomas added the extras, the visitors kept themselves in the game on 59 minutes when Juan Gonzalez intercepted a pass and raced to the line and Twelvetrees converted.

Replacement Tommy Mathews kicked a penalty to stretch the home side's lead before Ferrie pounced on a handling error to dot down on 65 minutes as the former added the extras.

Coventry crossed again with five minutes left to play as Nayagi powered over from a driving maul and Mathews converted.

And Reeves scored the game's final try on 79 minutes as he dove over the line in the corner to take the home side beyond the 60-point mark as Mathews added the extras.

Coventry host Hartpury in the play-offs on Saturday, May 16 with kick-off at 4pm at the Nick Newbold Stadium.

## Club to unveil tribute to golfing greats as part of special 50th anniversary celebrations

**GOLF:** COVENTRY Golf Club will honour legends of the sport with a historic 50th anniversary celebration at the club.

Coventry will unveil a special tribute on the club's signature 12th hole, half a century after some of the sport's greatest names graced the club's fairways.

In May 1976, Coventry hosted the final of four prestigious annual tournaments sponsored by Piccadilly.

Former European Ryder Cup-winning captain Sam Torrance OBE won the 1976 Piccadilly Tournament at Coventry to claim his first European Tour victory.

And then teenagers Sir Nick Faldo and Seve Ballesteros also competed in the event.

Faldo won six major titles, made 11 Ryder Cup appearances and spent 97 weeks as the world number one.

Charismatic Spaniard Ballesteros claimed five major titles and appeared at eight Ryder Cup's, captaining Europe to victory in 1997.

The full field also featured past winners Bob Shearer (Australia) and Maurice Bembridge (England) along with Leamington-based youngster Pip Elson.

South African Vincent Tshabalala, the first black man to win on the European Tour, also took part in the tournament.

Coventry Golf Club members will mark the 50th anniversary since the

Sam Torrance, Nick Faldo and Seve Ballesteros once walked the fairways of Coventry Golf Club. Picture by Ben Salisbury.



tournament with a celebration on Saturday, May 16.

A permanent display reading: "Golfing in the Footsteps of Legends" will honour the players who competed that day.

Head PGA professional at Coventry Golf Club, Martin Sutliff said: "To think Torrance, Faldo and Ballesteros

all walked this course 50 years ago is quite something and I am incredibly proud to be the professional at a club with that kind of heritage.

"It is quite right that we mark this anniversary with special events and I am really looking forward to welcoming visiting golfers from across the county and beyond to mark this celebration."

**CRS LTD**  
 Spring Lane South, Malvern WR14 1AT  
 ATF's are the **ONLY** legal way to scrap your vehicles  
**BUYERS**  
 of all SCRAP Metals and SCRAP Vehicles  
 The **ONLY** authorised treatment facility in Malvern!  
 Best Prices Paid • Collection & Skip Drops Farm  
 Equipment, Copper, Brass etc. • 50 Ton Weigh Bridge  
**ID REQUIRED - 01684 578081**  
 www.crs-malvern.co.uk

# Observer SPORT

9 772040 128006  
 Published by Bullivant Media Group Ltd, Webb House,  
 Church Green East, Redditch, Worcestershire, B96 8BP  
 Printed by Newsquest, Newspaper House, Osney  
 Mead, Oxford, Oxfordshire, OX2 0EJ

**VINYL RECORDS WANTED**  
 Buying since 1978  
 Get your cash TODAY!  
 I will come to you  
 Phone PAUL  
 01527 893992 | 07765 142354

www.rugbyobserver.co.uk BRINGING YOU ALL THE LATEST SPORTS NEWS AND VIEWS FROM THE AREA

## Stellar showing from swimmers

by Aaron Sutcliffe  
 aaron.sutcliffe@bullivantmedia.com

**SWIMMING:** RUGBY Swimming Club's artistic swimmers won gold and bronze competing at the National Championships in Nottingham.

A total of 18 Rugby swimmers qualified to compete at the most prestigious event on the artistic swimming calendar.

The National Championships took place at the Harvey Hadden Sports Village in Nottingham.

Rugby's swimmers competed against some of the best artistic swimmers from across the country.

This included Team GB Olympic athletes Kate Shortman and Izzy Thorpe who both won silver at the 2024 Paris Games.

Rugby competed across four dis-

ciplines - the free duet, free team, technical team and acrobatic team events.

And Rugby's Eve Young won gold in the senior free duet competing alongside partner Robyn Swatman of Walsall.

Rugby also secured a bronze medal in the free team event while the technical team just missed out on a place on the podium with a fourth-place finish.

The junior free duet of Lola Huett and Frankie Klym also finished fourth in their event.

Rugby's acrobatic team placed 10th in a highly competitive field with the team's qualification for the National Championships alone a significant achievement.

The swimmers who represented Rugby were: Rebecca Harper, Imogen Ravenhall, Tilly John, Tyra Watson, Amy Buckley, Emi Owen, Chloe Barrett-Leafe, Beatrice Banks, Saranne Black, Eve Young, Chloe Bartholomew, Olivia Barry,

Darcey Townsend, Amelie Jeary, Lola Huett, Frankie Klym, Valentina Kapiris and Sophie Henry.

The National Championships are only open to swimmers aged 15 and above with swimmers required to meet rigorous national standards.

Several Rugby athletes made their first appearance at the National Championships while others competed for the final time before moving on to university.

Head coach Hannah Secher said: "National Champs 2026 completed. A fantastic weekend of the highest level of our sport in this country."

"Year on year, Rugby continues to show up, perform and be in the mix for medals.

"I would like to say a huge congratulations to all of our qualified athletes that competed, most of whom are preparing for exams in the weeks ahead, and who proudly represent the club.

"For some, this was their first



Championships. For others, their last before moving on to university."

Rugby took 18 swimmers to the National Championships in Nottingham. s

## CASHBROKERS

LEAMINGTON SPA

PAWNBROKING LOANS  
 SCRAP GOLD & SILVER  
 BUY BACK  
 JEWELLERY & WATCHES  
 COINS & BULLION

CASH PAID  
 FOR GOLD, SILVER,  
 COINS & BULLION



01926 258252

144 Parade, Leamington Spa, CV32 4AG

www.cashbrokersleamingtonspa.co.uk

