

WANTED
Motorcycles and Scooters
 Any cc, condition or age,
 good prices paid
 07944 781 933 | 01926 257 643

Friday, May 22nd 2026 Week 21

 facebook.com/rugby.observer

rugbyobserver.co.uk

 @rugbyobserver t: 01926 451900

Your **FREE** edition - just pick one up and keep up with the news

Care board reopens adult ADHD testing

by **Andy Morris**
 andy.morris@bullivantmedia.com

ADULT assessments for ADHD are again available in Coventry and Warwickshire.

NHS Coventry and Warwickshire Integrated Care Board (ICB) has reopened referral routes for attention-deficit hyperactivity disorder (ADHD) patients of all ages.

The board paused assessments for over-25s a year ago because the system was "not working effectively", causing a backlog of thousands of children awaiting assessment - with some facing a 10-year wait.

Referrals are now open after the board developed a new ADHD and autism policy and framework, and providers assessed five times more under-25s than in the previous year.

Waiting lists are now expected to have come down, when figures are published in the coming months - but the integrated care board acknowledged they are still too long.

A spokesperson said: "Waiting times vary significantly, depending on the provider and referral pathway, and remain extremely long, particularly for ADHD."

"Within the NHS, adult ADHD assessment waiting times are typically between three and six years,

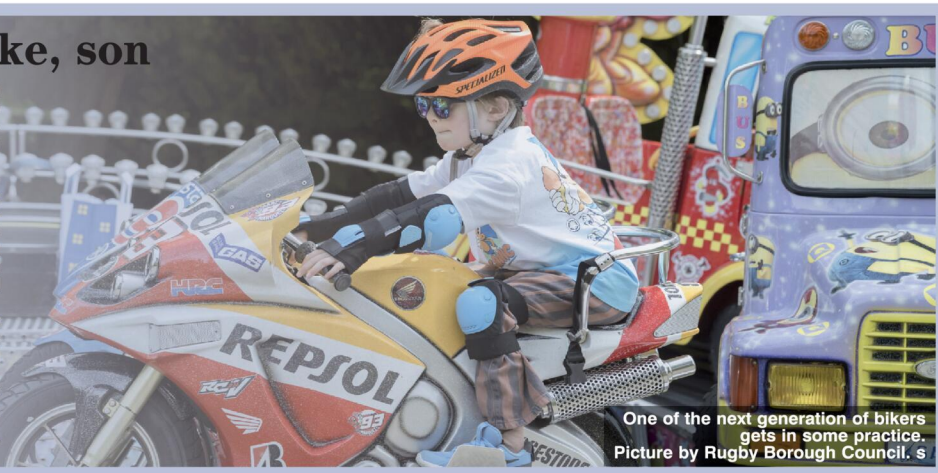
On yer bike, son

BIKERS young and old roared into the town centre on one of the liveliest days in the Rugby calendar.

Thousands of motorbike enthusiasts, music fans and revellers cheered as more than 850 motorcycles took part in the traditional ride-in to kick-start the annual Bikefest on Sunday.

There was live music on two stages, hair-raising bike stunts and funfair rides to a backdrop of shiny Harley Davidsons, Ducatis, Yamahas and Triumphs.

See pages 6 and 7 for more details.



One of the next generation of bikers gets in some practice. Picture by Rugby Borough Council. s

while children may wait between five and 10 years.

"For autism assessments, children and young people wait around two years, on average, with adult waiting times slightly longer.

"The ICB is working with partner organisations to address this.

This is not unique to Coventry and Warwickshire and patients across the country face similarly long waits."

Patients who believe they have ADHD or autism can now contact their GP. Those who are referred for both ADHD and autism will also receive a dual assessment, if appro-

prate - reducing waiting times and the number of appointments needed and helping doctors to better understand patient needs.

ADHD is a condition that affects people's behaviour by causing restlessness, trouble concentrating and impulsive actions. While most cases

are diagnosed in childhood, there are a growing number of adults seeking diagnosis.

The ICB has created a new webpage which provides more details and a series of frequently-asked questions. Visit tinyurl.com/3ubvy7dx for more information.



Tel: 0800 3032559
 Mob: 07773 911552
 www.drives4u.co.uk

Are you looking to improve or enlarge your driveway or patio?

We can provide you with a beautiful new patio or driveway in Coventry, Bromsgrove, Redditch, Solihull, Leamington, Kidderminster and Birmingham

5 Year guarantee

- We've designed and built just about every shape and size of driveway and patio you can imagine, so we will not be phased by your project.
- We strive to achieve 100% satisfaction and unlike other driveway companies, with us you pay absolutely nothing upfront.
- Give us a call and you could save upto £1000



Tel: 0800 3032559 | Mob: 07773 911552 | www.drives4u.co.uk

Championing the needs of Rugby residents since 1991 and delivering the news to you every week



by Ian Hughes
ian.hughes@bullivantmedia.com

TRAINS will not be running on HS2 high-speed rail tracks through Warwickshire for at least another decade.

Transport secretary Heidi Alexander this week set out plans to reset the controversial project and deliver the line as quickly as possible and at the lowest cost.

The MP announced new delivery timeframes and costs for HS2, saying her plans could save billions and years of construction time while delivering services at the same speed as Japan's bullet trains.

The project is now expected to cost £87.7billion to £102.7 billion – a massive hike on the original £32.7billion estimate.

Two-thirds of the increase has been blamed on works being

missed from the scope of the original project plan, under-estimation by government and inefficient delivery. The balance has been blamed on inflation.

The government confirmed HS2 will run at 320km/h (200mph), aligning with speeds across Europe and Japanese high-speed trains. In previous plans, HS2 trains were set to run at 360km/h (225mph) but without track to test trains at that speed in Great Britain, adding to spiralling costs and build time.

It is claimed the change in speed could deliver savings of up to £2.5billion and at least a year in delivery time.

The first trains are now expected to start between Old Oak Common, in West London, and Birmingham Curzon Street, between 2036 and 2039. The new estimate for completion of the full line, from London Euston to Curzon Street, with a

connection to the West Coast Main Line, is between 2040 and 2043.

The government remains committed to delivering HS2 in full between Birmingham and London, with a new assessment revealing it could cost as much to cancel the project as it would to complete it, while delivering none of the benefits.

The transport secretary said: "Taxpayers, passengers and communities along the route have been let down by years of mismanagement on HS2. I share their anger about the waste and mess but I am proud that this government has worked with HS2's new senior team to get this project off life support and on the road to recovery."

"We will get the job done but we will also take every opportunity to save time and money in the process, getting a grip on delivery, controlling costs and stripping out

the complexity that's plagued the project in the past.

"We can and must build big infrastructure in Britain but we need competent people in charge. This is the same team that delivered the Elizabeth Line. We have done it before, we will do it again."

HS2 Ltd chief executive Mark Wild's ongoing 'reset', which started last summer, has seen six major construction milestones reached earlier than planned, including sliding a bridge under the A46 bypass near Kenilworth.

Mr Wild said: "I recognise this will be unwelcome news for local communities and taxpayers and I share in their disappointment that it will take longer and cost more to bring HS2 into service."

"Resetting HS2 was the only way to regain control of the project. We have turned a corner in the last 12 months, with significantly improved

levels of productivity, helping us to deliver major milestones ahead of schedule. We're also progressing with plans to bring HS2 into line with other high-speed railways in Europe – further reducing the project's complexity without compromising on benefits.

"Better journeys, more capacity on the network and economic growth are all vital to the country's future prosperity and that's exactly what we will deliver. Driven by the hard work of 31,000 people on the ground, HS2 is finally getting back on track."

Some 54 kilometres of the 190km track between London and Birmingham will cut through the heart of Warwickshire, with a new station also being built near Birmingham Airport. Swathes of the county's landscape has already been transformed by work on the line.

As recommended on Daynurseries.co.uk, please visit to see what our parents say

Quality Care and Education

Providing a fully inclusive service for families with children aged 6 weeks to 5 years from 7.30am to 6.30pm

If you are a working parent you could be eligible for 30 hours a week of free childcare.

At Emescote House the warm and welcoming environment ensures that your child's individual needs are prioritised, and their interests nurtured.

T: 01926 425067
E: emescote.house@childbase.com

Emescote House Day Nursery and Preschool, Leamington Spa, Warwickshire CV32 5DE

Now taking registrations
We'd love to show you around

Scan me for full nursery details

Ofsted Good Provider

PHOENIX COACHES

| | Adult | Child |
|---|--------|------------|
| May | | |
| 26th Lunch & Entertainment..... | £37.00 | |
| 27th Skegness..... | £29.50 | £24.00 |
| 30th Camden Market..... | £30.00 | |
| June | | |
| 6th Gloucester Docks & Quays..... | £26.00 | £20.00 |
| 13th Bath..... | £30.00 | £25.00 |
| 16th Shrewsbury..... | £27.00 | £22.00 |
| 27th Windsor..... | £30.00 | £24.00 |
| July | | |
| 4th Weston-Super-Mare..... | £29.50 | £24.50 |
| 11th Chester..... | £29.00 | £24.00 |
| 18th Hunstanton..... | £31.00 | £25.00 |
| 22nd Cambridge..... | £29.00 | £24.00 |
| 25th Wellesbourne Market..... | £16.00 | £11.00 |
| 28th Cheshire Oaks..... | £29.00 | £24.00 |
| August | | |
| 1st Llandudno..... | £31.00 | £25.00 |
| 6th Liverpool..... | £29.00 | £22.00 |
| 11th York..... | £29.00 | £24.00 |
| 13th Telford..... | £27.00 | £22.00 |
| 15th Mystery Seaside..... | £30.00 | £24.00 |
| Liverpool- Atlantic Tower Hotel 31st July-2nd August 26. 3 Days/2 Nights..... | £180 | Per Person |

Price include s- All Coach hire, Evening meal on 1st night only, 2 nights accommodation, 2 days breakfast, free time round Liverpool

Llandudno - The Chatsworth House Hotel 10th-14th August 26 5 Days/4 Nights.....£395 Per Person
Price Includes - All Coach hire, 4 nights accommodation, Evening Meal & Breakfast, Day excursions, Portmerion Village & 2 course meal and Welsh Highland Railway Journey

Blackpool - Grand Hotel 30th October-1st November 26 3 Days/2 Nights.....£195 Adult, £99 Child
Price Includes - All Coach travel, 2 nights accommodation, evening meal and breakfast

www.phoenixcoaches.org.uk

Tel No 02476 350 811. 50 Southfield Close, Nuneaton. CV10 OBE

PUBLIC NOTICES

For all your latest information on Planning Proposals, Traffic Notices, Goods Vehicle Operator Licences, Licences To Sell Alcohol and Probate Notices...

See page 28



Representatives of Homes England, Willmott Dixon, Rugby Borough Council and Michael Dyson Associates, pictured at the Navigation Way development in March. s

Affordable-homes site navigates to top construction project prize

by **Andy Morris**
andy.morris@bullivantmedia.com

A LANDMARK council housing development in Rugby has been named Residential Project of the Year.

Rugby Borough Council's (RBC) £22million Navigation Way development won the prize, at the Constructing Excellence Midlands Awards West.

The council's construction partner, Willmott Dixon, walked away with the prize at the award ceremony held at Birmingham's Edgbaston Cricket Ground.

Tenants have now moved into Navigation Way's 60 one- and two-bedroomed apartments, 20 maisonettes and 20 two-, three- and four-bed houses.

The homes have been built to modern sustainability standards and fitted with electric vehicle charging points, solar panels and air-source heat pumps.

Homes England backed the development with a £6.8million grant from its Affordable Homes Programme 2021-26 budget, enabling all 100 homes to be allocated to eligible households registered on the council's housing waiting list.

Navigation Way has now been shortlisted for the Residential Project of the Year Award at the National Building Awards, to take place later this year in London.

Michelle Dickson, RBC's strategic director for communities, said: "We are incredibly pleased that the Navigation Way development has been recognised and won the Residential Project of the Year Award at the Constructing Excellence ceremony."

"This project has delivered council homes in the borough and would not have been possible without support from both the government and Homes England.

"These high-quality homes are built with community at heart."

Michelle Cotterill, Willmott Dixon's delivery director, said: "This award recognises the true power of collaboration in delivering lasting community impact, through regional framework Constructing West Midlands."

"At Navigation Way, we worked very closely with Rugby Borough Council and our supply chain partners to transform an ageing brownfield site into 100 high-quality, sustainable, affordable homes that will enable people to thrive for generations."

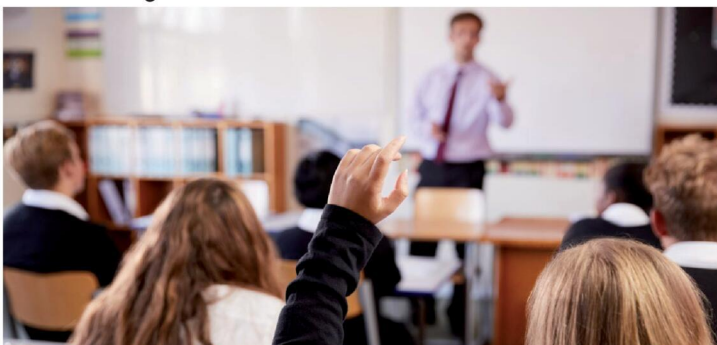
"Winning Residential Project of

the Year is a testament to the council's dedication to creating a positive legacy for Rugby and Willmott Dixon's commitment to becoming a trusted advisor and partner of choice."

Plans to develop the former site of the Biart Place tower blocks were approved eight years ago, after surveys revealed the two buildings were beyond repair.

Councillors voted to name the new road serving the development Navigation Way, to celebrate the role the railway and canal networks played in Rugby's rapid industrial growth in the 19th century.

County SENDs welcome news



'Hands up if you think these projects are a good idea.' s

SCHOOLS in Warwickshire will be better equipped for children with special educational needs after the county council announced a £1.66million funding programme.

The cash will be used to deliver improvements to safeguarding, accessibility, and special educational needs and disability (SEND) provision, with a focus on reducing travel times for vulnerable students.

Recipients include a £400,000 project for hygiene facilities, outdoor ramping and widened thresholds for pupils with disabilities, and another £400,000 toward perimeter fencing upgrades across the school estate maintained by Warwickshire County Council.

Three schools in Rugby

will also benefit from specific projects.

At Brooke School, £525,000 will be invested into the remodelling of an under-used building to create 34 additional specialist places for young people with learning and cognition difficulties.

A £234,000 redesign and expansion of ground-floor washroom facilities will take place at Bilton School.

At Ashlawn School, £77,000 will be invested to create a new specialist-resourced facility for up to 45 pupils with communication and interaction needs, repurposing existing spaces to include calm rooms and dedicated classrooms.

Another £26,000 project, at Burton Green CofE Academy, in Kenilworth, will

reconfigure access routes and facilities to support the establishment of a new pre-school, comprising 13 early-years childcare places.

By increasing SEND capacity in Rugby and Kenilworth, the council aims to reduce the distance pupils need to travel.

The council's education spokesman, Coun Wayne Briggs, said: "We are seeing an increasing and evolving need for specialist education provision across the county."

"Through investment in dedicated resourced provisions within our mainstream schools, and expanding our specialist settings, we are ensuring that children with special educational needs can learn closer to home, and that our schools are fit for the future."


just go.holidays

For more information, or to book, please call
03332 342 514 Quote **osg**

★★★★★

★ Trustpilot

Reader Travel



Bournemouth, Weymouth & the New Forest
Departing **Mon 14 Sep '26**
Oh we do like to be beside the seaside! Enjoy everything Bournemouth has to offer and discover the highlights of the area, from nostalgic Weymouth to the stunning New Forest. With the chance to explore picturesque Swanage too, come and escape the everyday!
SO MUCH INCLUDED...
✓ Return coach travel **from Rugby, Coventry**
✓ 4 nights at the Heathlands Hotel, Bournemouth (JG2 rating) with dinner & breakfast
✓ Excursions to Dorchester Market, Weymouth & the New Forest (Lyndhurst & Lymington)
Optional excursion to Swanage (£12pp)



Paddington The Musical Evening Show & London
Departing **Sat 5 Dec '26, Sat 12 Dec '26**
Marmalade sandwiches at the ready! Come along to the Savoy Theatre for one of the West End's most anticipated shows, Paddington the Musical, where this loveable little bear arrives in London from deepest, darkest Peru and embarks on an unforgettable adventure!
SO MUCH INCLUDED...
✓ Return coach travel **from Rugby, Coventry**
✓ Overnight stay at a selected hotel outside London (JG3 or JG4 rating) with full English breakfast
✓ Grand Circle ticket (evening performance)
✓ Free time in London for shopping & sightseeing

5 Days by Coach only £369
Single Supplement £100
These packages are subject to Just Go! Holidays terms & conditions. Coach bookings are protected by Bonded Coach Holidays & the Association of Bonded Travel Organisers Trust Ltd. All holidays are ATOL protected No. 10895. Prices are per person, based on two people sharing a room & based on bookings made up to 7 days post publication, after which prices may fluctuate. Choices of date, hotel, airport or pick up location may incur a supplement. Please see website or call for full details.

2 Days by Coach only £209
Single Supplement £45
These packages are subject to Just Go! Holidays terms & conditions. Coach bookings are protected by Bonded Coach Holidays & the Association of Bonded Travel Organisers Trust Ltd. All holidays are ATOL protected No. 10895. Prices are per person, based on two people sharing a room & based on bookings made up to 7 days post publication, after which prices may fluctuate. Choices of date, hotel, airport or pick up location may incur a supplement. Please see website or call for full details.

Visit us online at
justgo.holidays.com/OSG

f justgohols

033 numbers are free within inclusive minutes packages otherwise standard rates apply.






Good sports are being called to run the Leamington Half Marathon. s

Get your trainers

GOOD sports are being called upon to line up for the Leamington Half Marathon, and a new 15K, in aid of Safeline.

The run, organised by Raceways Events CIC, is back for its ninth year, on Sunday June 7, and will start and finish at the Pump Room Gardens.

David Poole, event manager at Raceways Events CIC, said: "We're incredibly excited to bring the Leamington Spa Half Marathon back for 2026."

"The support from the local community continues to grow year on year and welcoming Davisons Law as our new headline sponsor is a fantastic step forward for the event."

"Introducing the new Leamington 15K allows even more people to take part, whether they're step-

ping up in distance or just getting started on their running journey. It's all about making the event as inclusive and accessible as possible while supporting an important local cause."

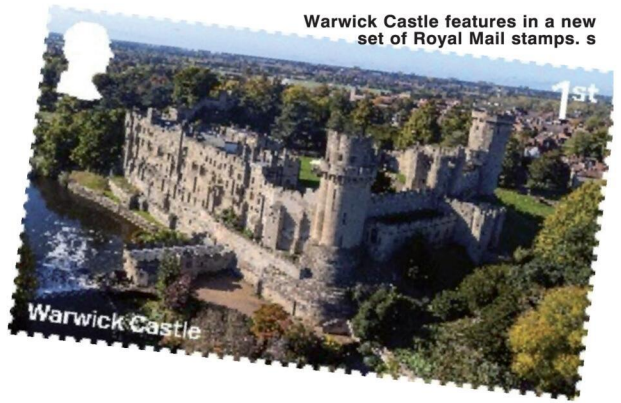
This year, the race is raising funds for Safeline – a Warwickshire charity dedicated to preventing sexual abuse and supporting those affected by it.

Participants can opt to enter the race for free by pledging to raise £100 for Safeline. Additionally, a portion of all race profits will be donated to the charity, helping to fund its ongoing work supporting individuals and families in need.

The event also includes a free kids mile fun run.

Visit www.leamingtonspahalfmarathon.co.uk for more details.

Local icon is part of a new set of stamps from the Royal Mail



Warwick Castle features in a new set of Royal Mail stamps. s

by **Philippa Mings**
philippa.mings@bullivantmedia.com

WARWICK Castle has been given the Royal Mail stamp of approval.

It is one of eight landmarks to feature on a new set of stamps celebrating UK castles dating from the Norman conquest onwards. A further four stamps celebrate Royal castles.

Warwick Castle was built by William the Conqueror during the campaigns fought against the Anglo-Saxons that followed the Battle of Hastings, in 1066.

Two years later, William ordered the building of Warwick Castle to control the town and, according to the Domesday

survey of 1086, properties were demolished to accommodate its fortifications.

The castle became the seat of the Earls of Warwick, one of the greatest noble lines of the Middle Ages. They ambitiously redeveloped the building in stone, from the 14th century, and named its highest tower after the hero of chivalric literature, Guy of Warwick, from whom they claimed descent.

The other castles on the stamps are Dunluce, Dundrum, Raglan, Pembroke, Urquhart, Stirling and Balmoral.

The royal castles depicted are Caernarfon, Windsor, Dover and Balmoral.

Liam Bartlett, general manager at Warwick Castle, said: "Warwick Castle

is certainly an icon on the Midlands' landscape, so we're thrilled that we'll be featuring in Royal Mail's brand-new stamp collection."

"One of the earliest castles to be built in the UK, in 1068 just after the Battle of Hastings, we wonder how the castle's founder, William the Conqueror, might have felt about his building ending up in miniature on a postage stamp centuries later."

Royal Mail spokesperson David Gold said: "Castles are among the most recognisable features of the UK's landscape and this stamp issue celebrates the skill, ambition and design behind these remarkable structures from across the nations."

GOOLF



MEMBERSHIP FEES FROM
AS LITTLE AS **£15** PER WEEK

Visitors Welcome

Clubhouse & Catering Open to ALL
Meeting room for Hire.
Wakes, Family Celebrations catered for

www.rugbygolfclub.co.uk

01788 542306

📍 Rugby Golf Club, Clifton Road, Rugby, CV21 3RD



Patrick (left) and Gerry Connors. s

The brothers were caught on camera at the scene of the Bloomfield Avenue burglary.

Brothers filmed during house burglary are jailed for offences

by **Andy Morris**
andy.morris@bullivantmedia.com

BURGLAR brothers who broke into a Coventry home and stole thousands of pounds worth of cash and gold jewellery are now behind bars.

Patrick and Gerry Connors, both of Dovecote Drive, ransacked a house in Bloomfield Avenue in August and stole around £7,000 worth of gold jewellery and £1,300 in cash.

Unbeknownst to them, they were caught on a CCTV camera which the homeowner had installed in the garage.

With the help of further CCTV footage, officers were able to identify the Connors brothers and began their search to arrest them.

After a van matching the description of the one used by them was found in September, Patrick was finally placed in cuffs on October 1, having attempted to run off from officers when they spotted his vehicle.

Brother Gerry was then arrested on October 9, with officers searching their house and finding a pair of tracksuit bottoms matching the ones Gerry was seen wearing on the CCTV images.

Enquiries by the police team also matched Patrick to another

attempted burglary, at a property in Woodway Walk in May last year.

The 35-year-old had gained access to that shared property, damaging and forcing doors open before searching cupboards and ransacking the place. Nothing was reported stolen.

Patrick was charged with burglary with intent to steal and burglary dwelling and theft, and pleaded guilty.

Brother Gerry, aged 32, also pleaded guilty to burglary dwelling and theft.

Appearing together at Warwick Crown Court on May 1, the brothers were both jailed for their crimes.

Patrick was jailed for four years and Gerry was sentenced to 27 months.

Det Sgt Jay Aston, who supervised the investigation, praised the dedication of his team in securing the convictions.

He said: "Residential burglary is a deeply invasive crime that can leave victims feeling vulnerable long after the physical damage has been repaired.

"My team worked tirelessly to gather the forensic and digital evidence needed to build a robust case and I am immensely proud of their commitment to getting justice for the victims.

"Seeing these two individuals behind bars is a testament to that

hard work and we hope it offers some peace of mind to those impacted by these offences.

"Burglary leaves victims feeling unsafe in their own homes and Patrick and Gerry Connors showed a blatant disregard for the privacy of others, striking shared housing where multiple people were affected.

"Thanks to the CCTV provided by the victims, and the diligent work of my officers, we were able to take these two off the streets of Coventry."

Visit www.westmidlands.police.uk/cp/crime-prevention/protect-home-crime for more information on how to protect your home and keep your possessions safe.

For all your Roofing and Roofline needs...



Big enough to cope, small enough to care.



42nd Year in Business

Your local family run business established in 1983 by Roger Smith. His wife Ann headed the office, now run by daughter Donna. Sons; Craig and Marcus can be found at work on site, as well as providing your free, no obligation quotations.

All of our work is guaranteed, so your home is safe in our hands.

To find out more about our history, view recent pictures and customer feedback, please visit our website or Facebook page.



UPVC Fascia, Barge, Soffit & Guttering



Mock Tudor/ Replica Wood Boards



Cladding



Equinox Tiled Conservatory Roof System

Products and Services we offer:

- Fascias/ Barge boards/ Soffits/ Guttering/Dry Verge
- Carports/ Over door canopies/ PVCu doors
- Composite doors/Garage doors
- Concrete (Finlock) gutter lining or removal
- Cladding including textured timber effect (Fortex)
- Flat to pitched roof conversions
- Polycarbonate roofing/ Plastic roofing
- Rubberbond fleecebacked or Single ply roofing
- Fibre cement roofing sheets
- Mock Tudor Planks



Dry Verge & Dry Ridge System



Rubberbond FleeceBack EPDM Roofing



To find out more...
02476 494 491

www.rogersmithinstallations.co.uk

rogersmithinstallations@yahoo.co.uk

[facebook.com/rogersmithinstallations](https://www.facebook.com/rogersmithinstallations)

Roger Smith Installations





Riders from the Extreme Bike Battle show performed hair-raising stunts throughout the day. s



Bikers were happy to oblige this request. Picture by Rugby Borough Council. s

Bikers roar back into town in style

by **Andy Morris**
andy.morris@bullivantmedia.com

BIKERS, enthusiasts and music fans from far and wide roared into Rugby for the annual Bikefest on Sunday.

The event kick-started with the traditional ride-in, with more than 850 motorcycles riding from Draycote Water to town, taking in Dunchurch and Ashlawn, Hillmorton and Whitehall roads before arriving in style to open the festival.

Proud bike owners put their machines on display with famous marques such as Harley Davidson,

Ducati, Yamaha and Triumph alongside vintage cars.

Thrill-seekers tried the Extreme Wheelie Machine simulator and riders from the Extreme Bike Battle show performed stunts.

Two live music stages, in Market Place and Church Street, showcased a lineup of local talent including the Rugby Electric Guitar Orchestra, Sweet Medusa, Overdrive, 2nd Hand Daylight, Jester, Ultrafade, The Mutineers, The Happy Hours, Lisa Curley and the Rugby Jazz Collective and The Jellyheads.

Food stalls and a funfair kept everyone fed and entertained throughout the day.

The free event was organised by Rugby Borough Council in collaboration with local motorcycling groups.

Tom Kittendorf, Rugby Borough Council's assistant director for leisure and wellbeing, said: "With continued support from local biker groups, Bikefest continues to grow; it is one of the most popular events in the town centre calendar.

"Drawing thousands of visitors from near and far, it generates a vibrant atmosphere and colourful spectacle in the town, bringing visitors into Rugby and encouraging people to spend time exploring and supporting local businesses."

More than 850 motorcycles arrived in style to open the festival. Picture by Rugby Borough Council. s

BIRMINGHAM ROYAL BALLET

20th-Century Masterpieces

Three ballets from three choreographic giants

19 & 20 June



Frederick Ashton
Birthday Offering
Kurt Jooss
The Green Table
George Balanchine
Theme and Variations

20th-Century Masterpieces is supported by donors to the Caroline Miller Fund. The Green Table is supported by Stuart Sweeney and Fern & Clive Potter. Birthday Offering is supported by The Frederick Ashton Foundation and The Rick Mather David Scrase Foundation.

H BIRMINGHAM HIPPODROME
birminghamhippodrome.com

Supported in part by funding from
ARTS COUNCIL ENGLAND



The Bikefest always gets the town centre bustling. Picture by Rugby Borough Council. s



Lining the streets for the popular ride-in. Picture by Rugby Borough Council. s



Lisa Curley and the Rugby Jazz Collective performing on the Church Street stage. s



Ready to saddle up. Picture by Rugby Borough Council. s

Thrill-seekers had a go on the Extreme Wheelie Machine simulator. s



The Railway Touring Company



Saturday 27 June 2026

A day trip by rail to Penzance.

Join us for Mazey Day in Penzance, the highlight of the annual midsummer Golowan Festival. The streets come alive with traditional arts, music and parades, including the community-built wicker models that have become a much-loved centrepiece of the celebrations. Explore street markets and food and craft stalls, with live music, dancing and street performers entertaining throughout a town beautifully decorated with flags and flowers. Enjoy a highly scenic route through the far west of Cornwall, where the journey is as memorable as the destination.

- Join us from Dorridge, Solihull and Birmingham New Street
- From £115 per person
- Premier Dining available

The Mazey Day Cornishman

MAGNIFICENT LOCOMOTIVES • SCENIC JOURNEYS • FASCINATING DESTINATIONS

For more information please visit railwaytouring.net or phone 01553 661 500



Heroes celebrated

HUNDREDS of nurses at Warwick Hospital were served up a special breakfast to mark international nurses day.

The Rapid Relief Team (RRT) charity served up 600 meals to nurses and midwives at the Lakin Road hospital, to thank them for their dedication in looking after others.

International nurses day is a global event celebrating the dedication and compassion of nurses across the world.

In the UK, the RRT served more than 4,000 nurses at six hospitals, with the help of volunteers. It was part of the charity's global initiative, which saw RRT teams deliver more than 114 events, reaching more than 102,000 nurses worldwide.

The RRT, which is made up of volunteers from the Plymouth Brethren Christian Church, puts compassion

into action by offering practical support to charities, emergency services and other organisations 'on the front line'.

The charity has a long history of supporting healthcare staff with the RRT organising an A&E appreciation week last year, when volunteers visited 93 hospitals and hosted 115 welfare events where they served more than 10,000 coffees and cakes to A&E teams.

Doug Barr, RRT local team leader, said: "The theme of international nurses day this year is 'empowered nurses save lives', and it was our pleasure to be at Warwick Hospital to show our appreciation for the nurses that work tirelessly to care for our community. Their resilience, empathy and dedication are truly inspiring and international nurses day gives us a moment to pause and say thank you."



Leah Kirkwood and Florence Jack Petter helped establish fortnightly clinics in Warwickshire for the homeless and vulnerable. Picture by Coventry University. s

Nursing duo's prize for homeless clinics

by Philippa Miggins
philippa.miggins@bullivantmedia.com

TWO innovative nursing students have won an award for helping vulnerable and homeless people in Warwickshire get easier access to healthcare services.

Leah Kirkwood and Florence Jack Petter helped establish fortnightly county clinics offering basic health checks in an effort to reduce the number of people going to A&E when unwell.

The duo won the Student Innovation in Practice award at the *Student Nursing Times Awards 2026*.

The pair became involved in the project while training as nursing associates with Coventry University and Leamington Primary Care Network (PCN).

The clinics were started by the PCN, the Helping Hands Community Project and GP Dr David Maud after it was establishing there were no dedicated outreach healthcare clinics for people experiencing homelessness in Coventry and Warwickshire.

Judges praised the students as "instrumental" in setting up the project, which they said was "an innovative, nurse-led and responsive service with a human touch and patient centred approach".

Leah, aged 45, said the award showed the work mattered and had the potential to be used more widely.

She added: "These are people who so often fall through the cracks. Many have had difficult experiences with healthcare and don't feel able to access traditional services. By meeting them in a place they feel safe, seeing the same faces and taking the time to listen, we can really start to make a difference."

Florence, aged 30, added: "It is an incredible honour to win this award."

"More importantly, it shines a light on the importance of addressing health inequalities and recognising the impact of outreach work."



Breakfast is served. s

Summer Savings

JOHNSONS

Part of the Coach Travel Group

Discover effortless, elegant escapes with Johnsons Coaches Travel in Comfort. Stay in hand-picked hotels. Enjoy every moment.

| | | |
|--|---|--|
|  <p>Forest Lodge in the heart of New Forest 4* Forest Lodge Hotel From £779pp Sun 14th - Thurs 18th June</p> |  <p>Llandudno & Snowdonia 3* The Dunoan Hotel From £979pp Sun 21st - Fri 26th June</p> |  <p>Picturebook North Devon 4* The Saunton Hotel From £999pp Sun 21st - Thurs 25th June</p> |
| Hassle-Free Travel | Handpicked Hotels | Exceptional Value |
|  <p>Rail and Sail in the Western Highlands 3* Winnock Hotel From £1049pp Wed 24th - Mon 29th June</p> |  <p>A week on the English Riviera 3* The Queens Hotel From £1149pp Fri 26th June - Fri 3rd July</p> |  <p>Luxury Sidmouth at the Belmont 4* The Belmont Hotel From £959pp Sun 28th - June Thurs 2nd July</p> |

Book Through our website by Scanning the QR Code



Book Now, Save £50pp!

Lock in your perfect summer getaway today!

CODE: SUMMER50

Crackdown on rogue landlords



Coventry Council House, the HQ of Coventry City Council.

OFFICERS at Coventry City Council now have powers to crack down on landlords who do not comply with new laws.

Major reforms under the Renters' Rights Act, which came into force on Friday May 1, will affect around 35,000 households in the private rented sector in Coventry.

The council's Head of Housing Jim Crawshaw said: "In Coventry we will be ensuring that local people know about their rights and will be monitoring how landlords respond to the new legislation.

"The new reforms will mean that landlords will no longer be able to evict tenants without a valid reason.

"This will mean greater security for renters and will reduce the risk and impact of homelessness."

Other key measures include fixed-term contracts being replaced with rolling tenancies, allowing tenants to give two months' notice at any time.

There are new limits on rent increases, a ban on rental bidding wars, and a new right to request pets.

Enforcement powers have been strengthened,

allowing councils to reclaim rent from landlords who breach legal obligations.

Landlords are also now obliged to address serious hazards like damp and mould within set timeframes, and a national database and redress scheme will improve transparency and accountability.

Adrian Chowns, the council's Head of Safer Housing and Communities, added: "The act introduces new rules, to stop discrimination against people on benefits, banning upfront rent payments, granting rights for tenants with pets and making rental bidding illegal.

"We'll have enhanced powers to deal with these new breaches, allowing officers to demand information, enter premises and gather evidence for investigations.

"Our housing teams want to ensure both tenants and landlords are well supported, protected and ready for a fairer private rented sector."

Increased fines against landlords can be up to £7,000 for minor breaches or initial non-compliance, and up to £40,000 for more serious offences.

Visit <https://tinyurl.com/2wys369y> for more information.

Legislation to help people into work

A VOLUNTEERING charity in Coventry has welcomed new legislation which is helping disabled residents to try working without the immediate fear of losing their benefits

Voluntary Action Coventry (VAC) said the 'Right to Try' legislation, which was introduced at the end of April, would improve the situation disabled people face when seeking voluntary work.

CEO Sue Ogle said: "We know volunteering can be a life changing experience for many of our participants.

"Volunteering enables people to try out new experiences, tap into skills they may not realise they have, not to mention the social side which hugely benefits wellbeing - all essential experiences which can support a route back into employability.

"The 'Right to Try' sends a clear message that benefits will be protected while people are volunteering. This will bring much

relief to those who wish to get involved with community action but fear the loss to their benefits."

VAC helps people in Coventry to connect with volunteering opportunities at charities in the city and offers services to support people with a range of needs, aiming to match people with causes they feel passionate about.

The charity also runs a free twice weekly Drop-In Volunteering Advice service (Mondays and Tuesdays from 10am to 2pm) a six-week supported volunteering course, and a project to introduce people to community organisations and volunteering experiences.

It also runs the city's online community engagement platform, Get Involved Coventry, where hundreds of volunteering roles are listed for people to browse and apply for.

Visit www.vacoventry.org.uk for more information.

Bank Holiday Gardening at the garden lover's garden centre



A traditional garden centre that focuses on providing quality plants, garden products, homeware and gifts

national
Garden Gift
voucher

AQUATIC
PLANTS

TUB & BASKET
PLANTS

VEGETABLE
PLANTS

SUMMER
BEDDING

Treasured
Teddies

AT
FARNBOROUGH GARDEN CENTRE

Come & visit our Treasured
Teddies shop & see our
massive selection of cuddly
collectables & furry friends
including especially
loveable limited editions and
everyday huggables

A world of *Choice*

**NORMALLY OPEN
6 DAYS A WEEK**
Tues-Sat 9-5.30pm
Sun 10.30-4.30pm
**Open Bank
Holiday Monday**
On A423 Southam Road,
Nr Farnborough, Banbury, OX17 1EL
Tel 01295 690479

customersales@farnboroughgardencentre.co.uk

**WHERE THINGS FOR YOUR GARDEN
WON'T COST YOU THE EARTH**

Take your chance in the spotlight

by **Andy Morris**
andy.morris@bullivantmedia.com

THE SPOTLIGHT beckons for local musicians at this year's Godiva in the City festival.

The Godiva Calling competition is offering nine lucky solo artists, groups or bands the chance to play on the festival's main stage, in front of hundreds of people.

The triumphant acts will also win a professional photoshoot and video session.

The competition features three judges from the music industry who

will select winners in nine categories: acoustic; rap, reggae and afrobeats; DJ and dance; contemporary; rock; indie; desi; groups; and under-18s.

The nine winners will play at the festival, on July 4 and 5.

Coun Abdul Salam Khan, Coventry City Council's cabinet member for events, said: "Godiva Calling is a fantastic opportunity for our local talented musicians and vocalists to have their chance to perform on the main stage at the Council's Godiva in the City event in July."

"The wide variety of music categories means that many different types of music will be featured and there will be nine winning acts who



Liv Gardner, lead vocalist and guitarist of Monastery, winners in the rock category of Godiva Calling 2022. s

will be able to benefit from this fantastic prize. Applications are open and it is free to enter so I'd encourage anyone who is thinking about taking part to read the criteria on our website and apply."

Godiva in the City, organised by

Coventry City Council, will showcase the best of Coventry's home-grown talent in the city centre.

It will feature at least two headline acts alongside winning artists from Godiva Calling.

To enter the free contest, artists

must submit two tracks by 10am on Thursday. Shortlisted acts will perform live in front of an audience and judging panel.

Visit www.godivafestival.com/GodivaCalling for more information.

ANTIQUE & VINTAGE FAIR
SUNDAY 31ST MAY
ENTRY 9AM - 2PM
100 INDOOR STALLS
Sky Blue Sports Complex Ryton on Dunsmore CV8 3FL
Free parking & café - Entry £3, under 18's FREE
Dogs are welcome
Contact 07939 445024 www.gjfair.co.uk

NO RATIONING OF FUN: Families can step back in time during the May half-term at a Second World War-themed experience at St Mary's Guildhall.

Activities include a 'rationing trail', message decoding and creating a model Spitfire aircraft.

The Guildhall's usual idisplays, game kiosks and costume areas will also be up and running.

Tours, on Sunday, will showcase the building's World War II history 85 years since Coventry suffered devastating attacks.

Visitors can learn about the damage the building sustained and how it survived, its role as a centre for resistance through anti-war discussions and exhibitions and its significance for distributing ration books during and after the war.

A 'Sugar and Splendour: Crafting Your Own Tudor Sugar Plate' workshop will take place on Thursday and on Friday, May 29.

Sugar plate was designed to impress guests at Tudor banquets with stunning centrepieces.

Guildhall heritage and venue



Manager Abi Moore said: "Our May half-term activities combine creativity, history and fun for all ages and are ideal for families looking for an engaging and educational day out."

"We are excited to welcome families from across Coventry and the wider region to explore St Mary's Guildhall."
Visit www.stmarysguildhall.co.uk for more information and to book.



Tel: 0800 3032559
Mob: 07773 911552
www.drives4u.co.uk

Are you looking to improve or enlarge your driveway or patio?

We can provide you with a beautiful new patio or driveway in Coventry, Bromsgrove, Redditch, Kidderminster, Solihull and Birmingham

5 Year guarantee

- We've designed and built just about every shape and size of driveway and patio you can imagine, so we will not be phased by your project.
- We strive to achieve 100% satisfaction and unlike other driveway companies, with us you pay absolutely nothing upfront.
- Give us a call and you could save upto £1000






Tel: 0800 3032559 | Mob: 07773 911552 | www.drives4u.co.uk

THE BED FACTORY

Trading since 1989
3 floors full of beds
(We are bigger than we look)

Attention Arthritis Sufferer's

Revealed The Hidden Secret Of How To Massively Reduce Pain And Discomfort, Without The Need For Expensive Drugs Or Surgery!!!!

6 TYPES OF ELECTRIC ADJUSTABLE BEDS NOW ON SHOW SOME WITH MASSAGE

Mammoth Centre of Excellence
We at the Bed Factory Leamington are proud to have been awarded by Mammoth the title of Centre of Excellence. This is due to the fully trained staff and the display of the complete range of the new Mammoth Medical grade mattresses. We are recommended by Chiropractors and Doctors for our range of pressure relieving mattresses.



CHARTERED SOCIETY OF PHYSIOTHERAPY



2x MAMMOTH PILLOWS FREE with each Mammoth or Super King Mattress

Look at our trustpilot reviews at uk.trustpilot.com

Mammoth new range of mattresses now on show.

For the last decade Mammoth has built a reputation as a leader in health and wellbeing – the brand that brought Medical Grade™ foam and PostureCells® to the mattress market. Scientific testing, health award wins and an exclusive partnerships with the Chartered Society of Physiotherapy have made it the go-to name for those who need genuine comfort, pain relief and a great night's sleep.

Born out of healthcare and based on the pressure relieving materials used in medical beds on spinal injury units, Mammoth's secret ingredient is Medical Grade™ foam – a naturally cooling, pressure-relieving but supportive material that's shown to be far superior to standard memory foam.

Unlike memory foam, Medical Grade™ foam doesn't require heat to become pliable, nor does it lock sleepers in place where they may seize up with aches and pains. Instead, Medical Grade™ foam instantly contours to the body and provides a supportive yet flexible surface that aids natural spinal alignment.

This is complemented by Mammoth's innovative PostureCells® – independently moving castellations in the foam that provide even support but reduce partner disturbance. Importantly, the air channels between each PostureCell® also serve to wick away the moisture and allergens that typically build up through the night.

Testing excellence

Under laboratory conditions, Medical Grade™ foam mattresses have been found to provide **46% greater pressure relief** and **69% faster cooling** than standard 50kg memory foam. For sleepers that means:

- Improved circulation through the night
- Faster recovery and healing
- Reduced overheating
- Reduced perspiration
- Improved hygiene

Determined to go further, Mammoth also put its mattresses through testing at Northumbria University's Centre for Sleep Research. In clinical trials it was shown that Mammoth's mattresses helped sleepers **fall asleep 29% quicker**, experience a **7% increase in sleep efficiency** and report a **21% increase in sleep enjoyment**.

Award wins

Mammoth's unique technologies helped the brand to win a Bright Ideas in Health award for pressure relief and temperature regulation – awards usually reserved for teams working within the NHS.

These impressive results are among the reasons why Mammoth has become the go-to name for elite athletes and professional sports stars – as can be seen through partnerships with the Rugby Players' Association, British Athletes Commission and Professional Cricketers' Association over the years, as well as relationships with Premier League football teams and Olympians.

Combatting back pain

The unique properties of Mammoth's sleep and comfort technologies have made it the go-to mattress range for health professionals. By improving pressure relief, enhancing postural support and increasing circulation, physiotherapists in particular love the positive patient outcomes offered by Mammoth. With over 50% of adults now estimated to suffer from back pain in their lives, it's never been more important to invest in the very best sleep surface to ease pain and discomfort.

Want to make a healthy choice and upgrade the quality of your sleep? Try the Mammoth Bed Test Centre at The Bed Factory now.

Leamington's Largest Independent Bed Retailer

We can supply a large range of beds in 1 to 2 weeks - 3' Single Beds also available - WE SUPPLY WHEN OTHERS FAIL

139 Regent Street, Royal Leamington Spa, CV32 4NX

01926 422404

sales@thebedfactory.co.uk
and www.thebedfactory.co.uk



Fun for all the family. Picture by Marcus Mingins 2126002MMR1



Weigh anchor!

LANDLUBBERS were invited onto the water at a sailing club near Rugby, writes *Andy Morris*.
 Draycote Water Sailing Club hosted a fun day, encouraging visitors to try sailing, paddleboarding and windsurfing – with experienced helms to show them the ropes.

Severn Trent Water and Rugby Canoe Club also exhibited at the event and the club galley served a barbecue and cake sale.

Visitors were challenged to try and guess the deepest part

of the reservoir and the number of gold coins in a treasure jar, with a pirate on hand to add to the entertainment.

Club manager Dave Rowe said: “The club welcomed around 130 people and the wind conditions were ideal for trying all of the different watersports.

“Sailing, windsurfing and paddleboarding were all very popular and, with a variety of activities on shore as well, it was a really fun and enjoyable day. A big thank you to everyone who came along.”



'Boatman Bill' with Jai (15) and Oscar (15). 2126002MMR11

All smiles on the water. 2126002MMR2

Questions about care? We can help



We know moving into residential care is an emotional and difficult decision with lots to think about.

With over 30 years' experience, we can help you navigate the process of finding the right care home, so that you feel confident about the decision you make – whether that's choosing a WCS Care home, or one outside our group that's more suited to your needs.

If you've got questions about care, or one of our care homes, our Trusted Advisors can help.



Philip Rainsford

Drovers House, Rugby
 ☎ 07802 728447
 ✉ p.rainsford@wcs-care.co.uk

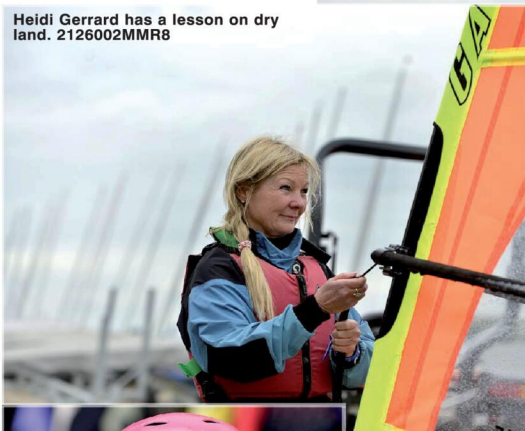


**Westlands, Rugby
 Dewar Close, Rugby**
 ☎ 07802 728443
 ✉ j.rugg@wcs-care.co.uk



Josephine Rugg

Heidi Gerrard has a lesson on dry land. 2126002MMR8



Making sure not to capsize. 2126002MMR5



Livia (nine) gets ready. 2126002MMR9



An oar-some day out awaits. 2126002MMR6

Steady on your feet! 2126002MMR3

OUR BIG SALE IS STILL ON



OPEN 7 DAYS
CV6 5EY

INFLATION EVERYWHERE - BUT NOT AT CARPET MILL!

Everything is going up in price, the same for Carpets and this is why it pays to go to Carpet Mill. Manufacturers of yarn and other materials for making carpets have all had price rises and some manufacturers are busy changing their specifications to many ranges to compensate. They also get surplus rolls that they cannot sell to the big stores as they don't have enough stock left to service them.

Therefore, we are buying those rolls at a **FAT DISCOUNT** and passing it on to **YOU**.



Everything Reduced
BE QUICK

BRAND NAME CARPETS
AT LOW LOW PRICES

From quality Axminster to budget cord
We are recommended for our low prices, quality service and extensive range throughout the Midlands. There are no R.R. prices on carpets, so if others give 50% offers or sales discounts, is it 50% off their normal high prices. ALWAYS compare with Carpet Mills normal prices!!!!!!!

CARPET MILL

CROMWELL STREET (OFF RED LANE) COVENTRY CV6 5EY TEL: (024) 7666 1985

SOME CUSTOMERS TRAVEL MILES - YOU DON'T HAVE TO - WE ARE HERE

www.salecarpet.uk



Life saving advice

LIFE-saving tips which could help people and their canine companions will be on offer at special sessions held in Rugby this month.

Free cardiopulmonary resuscitation information and awareness sessions will take place in Houlton with charity the OurJay Foundation, which raises awareness and funds for accessible defibrillators and provides training.

Attendees will have the chance to learn life-saving skills and techniques with qualified professionals.

Doggy First Aid sessions will also be on offer, from Rugby Guide Dogs, to teach dog first aid and support dog owners.

Naomi Rees Issitt, who set up the OurJay Foundation after her son Jamie Rees died at the age

of 18 following a cardiac arrest, said: "Anyone can use a defibrillator and all of us at OurJay hope we can support by answering any questions you may have, at this event."

The sessions have been organised by Urban&Civic, the master developer of the growing Houlton neighbourhood site.

Urban&Civic community development lead, Elly Hemus, said: "We're looking forward to a fun-packed day where people can pick up some vital knowledge and help support some brilliant local causes."

The free sessions will be held at Houlton School from 10am on Saturday May 30. Dogs are not permitted.

Visit <https://tinyurl.com/2rewbbw> to book a place.



Attendees will have the chance to learn life-saving skills and techniques with qualified professionals. s

Violinist Srividya Venkat (centre) with (from left) percussionists Dr Vishnu Swaroop, Dr Jai Shankar, Danujan Sivanesan and G Ganesan performing at 2023's May Mahotsavam. s



Classical with a twist

by Andy Morris
andy.morris@bullivantmedia.com

AN INDIAN classical musical tradition dating back half a millennium will continue this weekend, with a performance in Rugby.

The May Mahotsavam event will showcase Indian Carnatic classical music – a 500-year-old musical art from southern India which involves playing traditional compositions with the artists adding their own creative improvisations.

The event, now in its fifth year in Rugby, aims to bring Indian classical music to wider community.

It also aims to bring different facets of music, including a 'luthier meet-and-greet opportunity', by Libby Summers of Stamford music.

The performance will feature violin,

vocal and percussion performances; an interactive session celebrating the works of iconic composer Muthuswamy Dikshitar, on the 250th anniversary of his birth; and a mohiniattam dance performance by Remya Nambiar.

The event will also feature an 'East Meets West' fusion collaboration between digeridoo player Jono Guinness and Indian percussionists.

Organiser and violinist Srividya Venkat – a performing artist, teacher and musical event organiser – said she started the event in 2022 to provide a platform for her musical students and professional adult performers to bring their music to a wider audience and to make it more inclusive.

Srividya said: "I felt the need for a professional platform focused primarily on Indian classical music. "Considering the rich musical legacy of over 500 years, I

want the wider community to appreciate and listen to music that is aesthetically pleasing and has a cultivated history.

"It is a nice feeling and makes me proud of the diverse musical heritage I carry forward.

"Music is a language of no words and it is fascinating how different music shares similarities and blends so well. I hope different members of the audience can relate to special parts in the music tailored for them."

The performances take place across a series of sessions running from 10am to 4.30pm tomorrow Saturday at the Dunchurch Sportsfield and Village Hall.

The luthier meet-and-greet will take place from 2pm to 3.30pm in the village hall community room.

Call 07436 118765 or email mahotsavam@gmail.com for more information.

INTERNATIONAL METALS & CABLE RECYCLING LTD

We purchase all Ferrous and Non Ferrous Metal Batteries and Cables

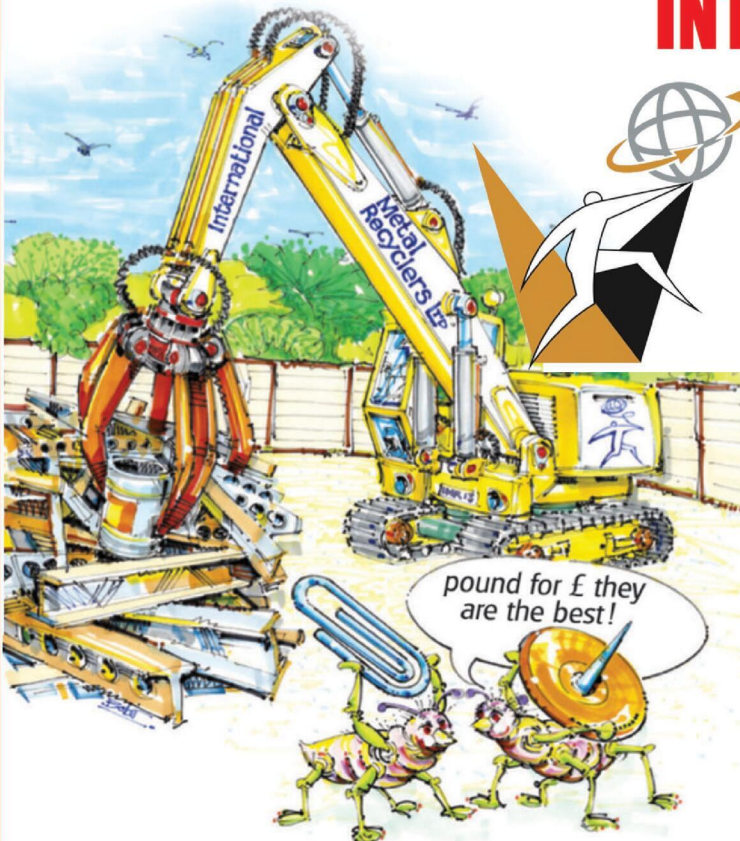
Collection Service Available

Long Marston Road, Long Marston, Stratford Upon Avon, Warwickshire, CV37 8AQ

01789 721 288

info@imcr.co.uk

Open Mon/Fri - 8am - 5pm





**NO POINTS.
JUST LOW
PRICES.**

SURELY THAT'S A PLUS?



**Which? Cheapest Supermarket
even without a loyalty app thingy.**

Sculptures trailed

A SCULPTURE trail has been created at historic Coughton Court.

The estate, near Alcester, and the Oxford Sculptors Group have created a trail featuring dozens of works.

Visitors can wander through the gardens and stableyard, where they will find a mix of statement pieces alongside smaller works hidden among the blooms.

The artists showcasing their works are Arabella Nock, Henrietta Bud, Marie Shepherd, Michele Greene, Paul Whitehouse, Peter Murphy, Richard John Cresswell, Victoria Hunt, Andrew Birnie, Pene Cairns and Nicholas Bale.

Imogen Birch Throckmorton, who man-

ages Coughton Court alongside her husband Magnus, said: "We're thrilled to be hosting our very first sculpture trail, in partnership with the fantastic team at Oxford Sculptors Group."

"The trail offers visitors the chance to experience contemporary art in a truly unique setting, with each piece carefully placed throughout the gardens and stableyard to surprise and inspire. We hope it encourages visitors to explore the estate in a new way and enjoy a memorable day out."

Running until Sunday May 31, all the works on display are available to purchase.

Visit www.coughtoncourt.co.uk for further details.



Tapping into an evergreen spirit

Singin' - and tap dancin' - in the rain: the GAP Tappers are preparing to celebrate national tap dance day.

by Ian Hughes
ian.hughes@bullivantmedia.com

A BUNCH of fleet-footed retirees can't stop tap dancing.

The 'GAP Tappers', all in their 70s and 80s and living at Great Alne Park (GAP) retirement village, started as complete beginners.

They are now preparing to celebrate national tap dance day tomorrow (Saturday) after transforming themselves into public performers.

The seven-strong group performs full routines from memory, with appearances including as part of a flash mob outside the Royal Shakespeare Theatre and a dance at Shakespeare's birthplace.

Their routines - including *Singin' in the Rain*, *Puttin' on the Ritz* and *Anything*

Goes - have already entertained fellow residents and visitors.

Resident Patricia Hackett, a former professional ballet teacher with more than 25 years' experience, decided to start tap classes to keep her peers active.

Pat used to teach tap to youngsters so transferring her experience to the older generation was a challenge. She choreographed the routines herself, tailoring the steps to suit her older apprentices.

Stephen Walsh, one of the original members of the group, said: "I had never danced before in my life and never imagined I'd end up performing in public in my later years. We all started from zero but Patricia made it so enjoyable and welcoming that we just kept going."

"It's given us confidence, friendship and a real sense of achievement. The reaction from audiences has been incred-

ible and we're all very proud of what we've achieved together."

Patricia said: "I wanted to create something that brought people together and gave residents the opportunity to try something new. Watching people in their 70s and 80s perform routines from memory with such joy and confidence has been extraordinary. This group proves later life can still be full of new experiences, challenges and creativity."

Adam Hall, village manager at Great Alne Park, said: "The GAP Tappers have brought so much energy and joy to village life and have become a real source of pride for our whole community. Their enthusiasm and determination have been incredible to watch and they are a wonderful example of the positive impact that staying active and socially connected can have in later life."



The sculptures have been created by the Oxford Sculptors Group. s

The New Ocean Hotel

WESTON-SUPER-MARE



FOUR NIGHT SUNSHINE SPECIALS

All include four nights accommodation with 'All You Can Eat' full English breakfast, four course evening meal, live nightly entertainment & optional coach travel

| | |
|---------------------------------------|----------------------------|
| Monday 1st June - Friday 5th June | Was £329 NOW £272pp |
| Monday 8th June - Friday 12th June | Was £335 NOW £283pp |
| Monday 15th June - Friday 19th June | Was £335 NOW £283pp |
| Monday 27th July - Friday 31st July | Was £355 NOW £299pp |
| Monday 7th Sept - Friday 11th Sept | Was £365 NOW £304pp |
| Monday 14th Sept - Friday 18th Sept | Was £365 NOW £305pp |
| Monday 28th Sept - Friday 2nd October | Was £345 NOW £293pp |

WEEKEND BREAKS WITH FREE BAR INCLUDED

All include three nights accommodation with 'All You Can Eat' full English breakfast, four course evening meal, live nightly entertainment, FREE BAR 6pm-10pm & optional coach travel

| | |
|---|----------------------------|
| Friday 29th May - Monday 1st June | Was £295 NOW £258pp |
| Friday 5th June - Monday 8th June | Was £295 NOW £262pp |
| Friday 12th June - Monday 15th June | Was £305 NOW £262pp |
| Friday 19th June - Monday 22nd June | Was £305 NOW £272pp |
| Friday 26th June - Monday 29th June | Was £315 NOW £272pp |
| Friday 3rd July - Monday 6th July | Was £319 NOW £279pp |
| Friday 31st July - Monday 3rd August | Was £325 NOW £283pp |
| Friday 28th August - Monday 31st August | Was £339 NOW £295pp |



To book or for further information please call us on **01934 621 839** • www.newoceanhotel.co.uk

THIS IS BIG!
THIS IS UNMISSABLE!

**MAJOR RENOVATION
& REFURBISHMENT
SALE**

This Friday, Saturday, Sunday and Bank Holiday Monday

After 40 incredible years, our flagship **Birmingham store in Tyseley** is about to undergo a **major transformation**. We're taking the floors up, knocking walls down a complete renovation and store refurbishment from the ground up. Even the iconic fountain is going. 1000s of items at **dramatically reduced prices**, Many items at cost price... and some even **LESS**.
Sofas, chairs, dining sets, beds, bedroom furniture, flooring, accessories, and so much more!

EVERYTHING MUST GO!

PLUS TO MARK THIS MILESTONE, WE'RE ALSO GIVING YOU...

30% OFF
ALL CUSTOMER SPECIAL ORDERS

COUSINS

FURNITURE

Warwick Road, Tyseley, Birmingham B11 2EW. cousinsfurniture.co.uk



The common blue is a frequent visitor to many gardens. Picture by Mark Searle from Butterfly Conservation.

Help to decide on Britain's best butterfly

PEOPLE are being urged to nominate their favourite butterfly by a group tasked with safeguarding the insects' future.

The survey is being carried out by Butterfly Conservation and people can respond until June 7.

People are being asked to choose the butterfly they love most – whether common garden visitors such as the red admiral or holly blue or rarities such as the duke of Burgundy or the mighty purple emperor.

The charity hopes to reconnect people with nature this summer and ensure everybody witnesses the elegance butterflies possess.

Butterfly Conservation has launched a website featuring fun facts, a place for people to vote and even a 'what's your

butterfly personality' quiz, to help crown Britain's best.

Julie Williams, chief executive of Butterfly Conservation, said: "It's clear Britain is a nation of butterfly lovers. From Sir David Attenborough and the Royal family to the hundreds of thousands of people who have taken part in Butterfly Conservation's Big Butterfly Count, these incredible insects hold a very special place in our hearts."

Julie expressed the love people have for butterflies, with a recent survey showing them the most-loved creatures during childhood.

She added: "It's no surprise butterflies are loved by people of all ages. Their journey from caterpillar to adult is both fascinating and joyful."

"It is through this almost magical story of transformation

that butterflies have the power to connect people to the natural world and inspire us to keep fighting for a wilder future."

Statistics show butterflies are in trouble, with 80 per cent of species having declined in the last 50 years due to habitat loss, changes in land use and climate breakdown.

Recent scientific evidence has proven butterflies not only benefit mental wellbeing but that watching butterflies for just 15 minutes can increase feelings and connection to nature. That has a direct correlation with how motivated people are to protect and preserve the insects.

Butterfly Conservation president Sir David famously said: "No one will protect what they don't care about and no one will care about what they have never experienced."

"A few precious moments spent watching a stunning red admiral or peacock butterfly feeding amongst the flowers in my garden never fails to bring me great pleasure."

With different species occurring in the UK, the search for Britain's favourite will prove fascinating, with big regional variations expected.

From 50 years of data, researchers have discovered a clear northward spread for some common garden species, including the peacock, comma and holly blue, the result of climate change resulting in warmer habitats for them to survive in.

Julie said: "It will be interesting to see if people in different parts of the UK have different favourites. Some of our native butterflies are garden visitors across much of the UK, some

live only in certain areas and some are more secretive, living in remote, specialised habitats.

"But all are equally important as indicators of the health of our natural environment."

"The exciting thing about this vote is that anyone, anywhere can take part and root for their favourite."

"You don't have to know anything about butterflies."

"So whether you choose based on a lovely colour, a fun name, what you spot in your garden or your fondness for a specialist species, it's what's important to you that matters."

People can visit britainsfavouritebutterfly.co.uk for more on butterflies and to have their say on their favourite before the June 7 deadline.

The results will be announced at the end of June.

OFTEN IMITATED BUT NEVER EQUALLED

While all costs are going up - OURS ARE STAYING DOWN

Due to our customer friendly services of No Door Salesmen, No Showroom and little overheads



NEW FLUSH WINDOWS

BEAUTIFUL COMPOSITE DOORS
Fully fitted
Competitive Prices



UPTO 30% OFF ALL WINDOWS



ALL PRODUCTS HAVE A 10 YEAR INSURANCE BACKED WARRANTY

BILL MOORE'S WINDOWS AND DOORS

A NAME YOU CAN TRUST

1 Brookside Close, Stratford-upon-Avon, Warwickshire CV37 9PL

01789 415171 • 07729 689239 • www.billmooreswindowsanddoors.co.uk

Russell Lane

The Jewellers of Warwick

Instant Cash Offer

Russell Lane's are the oldest Jewellers in Warwick
Experts in second-hand jewellery
Able to give free advice, giving true values to your items

No Appointment Needed



Second Hand Jewellery
Gold and Silver
Any amount, any condition

Website: www.russell-lane.co.uk

Tel: 01926 494 494 | Email: sales@russell-lane.co.uk

2 High Street, Warwick CV34 4AP

Monday – Saturday 10:00-4:00



Warwickshire's libraries are hosting a variety of events and activities during half term. s

Tons of half-term fun across the county

ADVENTUROUS kids will have plenty to do in Warwickshire during the May half term.

Outdoor adventures, museum activities, library events, family support services and heritage experiences are on offer across the county.

Ryton Pools Country Park will hold a free 30th anniversary fun day on Wednesday, from 10am to 4pm.

Attractions include miniature train rides, pond dipping, market stalls, a brass band, Morris dancing, maypole dancing and a barbecue. No booking is required for the day but free pond dipping can be booked via tinyurl.com/y28am27r.

Ranger-led events such as pond dipping and mini-beast hunting will take place at Kingsbury Water Park and at Ryton Pools and Burton Dassett Hills country parks. Visit tinyurl.com/esfy9ty for more information.

The Market Hall Museum, in Warwick, will host trails, creative workshops and activities inspired by local history.

Families will be able to explore exhibitions, museums and heritage across the county with activities designed to make history fun for children and young people. Visit heritage.warwickshire.gov.uk/whats for more information.

Warwickshire's children and family centres have planned activities and support sessions including stay-and-play groups, crafts, games, baby groups and activities designed to help families connect, play and spend time together. Visit tinyurl.com/bdmmcumn for more information.

Library events include Rhyme Time, Story Stomp, Book Magic and sensory sessions which are taking place across the county.

Families can also take part in Ready Steady Dance, with Motionhouse, at participating libraries; can enjoy special Winnie-the-Pooh themed sto-

rytelling sessions throughout May and June and can sign up to the Book Bingo challenge for families and teens.

There will also be half term fun including Bhangra Bounce sessions, with Sohan Kailey; and Minecraft gaming sessions at selected libraries.

Visit tinyurl.com/4m3dcjdp for more information.

Families looking for last-minute childcare or additional support during the school break can access information, advice and guidance through the Warwickshire Family Information Service (FIS), at www.warwickshire.gov.uk/children-families.

Help is at hand for children of all ages in the school system

by **Philippa Mingins**
philippa.mingins@bullivantmedia.com

SUPPORT and information is available for Warwickshire families with children who are approaching educational milestones.

Such moments – from starting school for the first time to preparing for exams and making decisions about what comes next – can bring worry and uncertainty.

Around 6,500 Warwickshire

families have recently found out which primary school their child will attend from September.

Warwickshire County Council's (WCC) Sorted for School campaign offers practical information and advice for the transition.

Many older pupils are preparing for summer exams or considering their next steps. The Set for the Future resources, on the Child Friendly Warwickshire website, aim to help get them ready for further education, work or training. They provide guidance on revising for

exams, making post-16 choices and looking after their wellbeing during what can be a pressured time.

Young people with special educational needs and/or disabilities (SEND) who are considering their next steps can find more information about the options available on the Local Offer webpages. This includes guidance on applying to sixth forms or colleges, work-based study programmes for young people with SEND and careers advice for young people who are not in education, employment or training.

A range of support is available for families. The online information also includes videos from Warwickshire's educational psychology service, offering practical guidance on major transitions including starting school, moving to secondary school, and progressing to post-16 education; helping parents and carers understand what to expect and how best to help their children through change.

WCC's children and young people spokesperson John Coleman said: "Every child and young person

will face moments of change as they grow – whether starting school for the first time or preparing for exams. These moments can feel big, and sometimes overwhelming but they are full of opportunity.

"In Warwickshire, we want all our children and young people to feel happy, supported and ready for what comes next. By taking small steps, sharing worries and celebrating progress, we can help build confidence and ensure every child feels able to look forward to their future."

★★★★★ Trustpilot

By Coach from Coventry, Rugby

Reader Travel

Andrea Bocelli
Live in Tuscany

Departing Mon 20 Jul '26

Don't miss the chance to see the world's most famous tenor, Andrea Bocelli, perform in his hometown of Lajatico this July. Taking place in the open-air Teatro del Silenzio amidst the rolling hills of Tuscany, it promises to be an unforgettable experience.

SO MUCH INCLUDED...

- ✓ Return coach travel & ferry crossings from Rugby, Coventry
- ✓ First & last night at the Selected Hotel, Tuscany, Italy (JG3+ rating)
- ✓ Additional overnight stay on outward & return journey on a half-board basis in Grenoble
- ✓ 5 nights at a selected hotel in Tuscany (JG3+ or JG4 rating) with dinner & breakfast
- ✓ Welcome drink & fruit & water in room on arrival (Italy hotel only)
- ✓ Portage where available
- ✓ Concert ticket for Andrea Bocelli at the Teatro del Silenzio
- ✓ Excursion to Pisa & Lucca
- ✓ En-route visits to Macon & Beaune

10 Days by Coach only £1499
Single Supplement £450

Wonderful Whitby & the North Yorkshire Moors Railway

Departing Mon 3 Aug '26

Stay at the elegant Royal Hotel in Whitby and explore Yorkshire's coast and countryside. Enjoy a nostalgic railway journey, visits to Pickering, Goathland and Scarborough, plus an optional trip to York - a perfect mix of comfort, charm and discovery.

SO MUCH INCLUDED...

- ✓ Return coach travel from Rugby
- ✓ 4 nights at the Royal Hotel, Whitby (JG3 rating) with dinner & breakfast
- ✓ Entertainment some evenings
- ✓ Heritage train journey on the North Yorkshire Moors Railway
- ✓ Free time in Goathland & Pickering
- ✓ Excursion to Scarborough

Optional excursion to York (£15pp)

5 Days by Coach only £589
Single Supplement £190

Isle of Wight Weekend

Departing Fri 25 Sep '26

A long weekend by the sea beckons on this lovely escape to the Isle of Wight. Beloved since Queen Victoria's reign, follow in the footsteps of royalty and relax at our base in a popular seaside resort and discover other highlights during an optional trip!

SO MUCH INCLUDED...

- ✓ Return coach travel & ferry crossings from Rugby, Coventry
- ✓ 3 nights at the Shanklin Beach Hotel, Shanklin (JG2+ rating) with dinner & breakfast
- ✓ Entertainment some evenings
- ✓ Excursion to Newport

Optional Island Highlights tour (£15pp)

4 Days by Coach only £309
Single Supplement £60

For more information, or to book, please call **03332 342 514** Quote **osg** or visit us online at justgohols.com

justgoholidays.com/OSG

033 numbers are free within inclusive minutes packages otherwise standard rates apply.

These packages are subject to Just Go! Holidays terms & conditions. Coach bookings are protected by Bonded Coach Holidays & the Association of Bonded Travel Organisers (Tuc) Ltd. Air holidays are ATOL protected (100899). Prices are per person, based on two people sharing a room & based on bookings made up to 7 days post publication, after which prices may fluctuate. Call to OSJ numbers are free within inclusive minutes packages, else standard rates apply. Choices of date, hotel, airport or pick-up location may incur a supplement. Please see website or call for full details.

'Bold' new plan for residents

LEADERS at Warwickshire County Council say their 'bold' new plan will focus on residents' priorities – although the specifics of how this will be achieved remain under wraps for now.

The plan, called Recalibrating Warwickshire, states a mission to 'improve the quality of services and deliver value for money, ensure a smooth transition to new local government structures, and create opportunities for everyone'.

But the Reform UK-led council has not yet revealed the specific actions it will take to achieve these objectives.

A WCC spokesperson said: "The plan sets out how the council will achieve its ambition to deliver real improvement for the people of Warwickshire, making sure that Warwickshire is a place to live where business can flourish, families can thrive and where children have the best chance in life."

WCC's customer spokesperson Coun Mike Bannister added: "Set against a backdrop of change and financial challenge, the priorities set out in the plan focus on those things which matter most to residents and will deliver better value for money in achieving our ambitions for everyone in the county."

"The emphasis is on practical delivery, value for money,

accountability, front line services and the everyday issues residents raise with us most often."

WCC leader Coun George Finch added: "Recalibrating Warwickshire is a plan that focuses on clear, common-sense outcomes. We will talk openly and proudly about personal responsibility – how we can all work together to make sure the people of Warwickshire get a better deal and a brighter future."

The specific actions the council will take to achieve the plan's objectives will be set out in the Council Delivery Plan, due to be considered by Cabinet in June. Visit <https://tinyurl.com/42crp4bp> to read the Recalibrating Warwickshire plan.

HAVE YOUR SAY: Residents are being invited to share their views on Warwickshire's household recycling centres.

The survey, open until the end of May, asks residents about their experience of visiting the county's recycling centres including ease of access, waiting times, staff helpfulness and site layout, as well as their views on the current trial of not having to book to visit a HWRC.

The survey is open to anyone living in Warwickshire, whether they currently use recycling centres, have used them in the past, or have never visited one.

Feedback gathered will help with future decisions on how recycling centres operate and how they can best meet residents' needs, including whether to reintroduce booking.

WCC's environment spokesperson Coun Darren Cheshire said: "This survey is a chance for residents to tell us what works and what could be improved. We are encouraging people to take part whether they use the centres regularly, occasionally, or not at all, as every response will help shape future decisions." Visit ask.warwickshire.gov.uk/bi/wrc-survey-2026 to take part.



Businesspeople are set to hit the green for the Coventry and Warwickshire Chamber of Commerce's Annual President's Golf Day.

Clubbing together to raise cash

BUSINESSPEOPLE in Coventry and Warwickshire will be hoping to raise a wedge of cash for charity when they take part in an annual golf day.

Representatives from firms across the region will take to the course at the Welcombe Hotel, Spa and Golf Club in Stratford on Thursday June 18 for the Coventry and Warwickshire Chamber of Commerce's Annual President's Golf Day.

The event will not only fill a hole in their diary, with an opportunity to play golf with fellow businesses, it's also a chance for a networking drive that could lead to new contacts and clients.

Businesses will be asked to chip in for a charitable good cause and any money raised on the day will go towards England

and Wales Blind Golf. Chamber president Sandra Godley said: "I'm not a golfer myself, but I am delighted to support this established event that brings businesses from across Coventry and Warwickshire together."

"I am sure some of the more seasoned golfers will want to lay down a marker to show off their talent, while others will be looking to enjoy the fun of the day and maybe contribute to a nice wedge of cash for our chosen charity."

"I know once the day is in full swing, everyone will have a great time on the course as well as networking at the wonderful Welcombe Hotel before and after."

Visit www.cw-chamber.co.uk/events/annual-presidents-golf-day-2026/ for more.



Direct Floors
Home service

Carpets | Vinyls | Laminates | Wood

Shop at home for your new carpet and flooring and receive up to 30% off shop prices. We are COVID SAFE with 1,000's to choose from with our mobile showroom!

- ◆ Mobile showroom to your home
- ◆ 1000's Samples to your door
- ◆ Fully qualified insured fitters
- ◆ Family run business since 1999
- ◆ Furniture moved & carpets uplifted for OAP'S & disabled free of charge



Find us on **facebook**




Happy to help!

Call 7 days a week 8am-9pm
01527-894777
www.direct-floors.co.uk

Summer of kindness campaign launched for Sir David's birthday

AN ANIMAL charity is calling on residents to carry out an act of kindness in honour of Sir David Attenborough.

To celebrate the broadcaster's 100th birthday, the RSPCA summer of kindness campaign urges people to take on seven kind acts for animals.

The acts include planting for pollinators, making homemade pet treats, feeding hedgehogs and organising a litter pick.

The RSPCA says these small gestures not only help wildlife but also bring communities together.

The charity says the summer months can be a tough time for animals – including wildlife – and it often receives more reports of deliberate cruelty to both wildlife and pets than at any other time.

Rebecca Machin, wildlife expert at the RSPCA said: "Sir David Attenborough has inspired generations to fall in love with animals and he has been a lifelong advocate for wildlife. His passion, care and voice for conservation has encouraged millions of people – including many across the RSPCA – to dedicate their lives to helping animals.

"As Sir David celebrates this milestone birthday, we're also celebrating his legacy in changing the way the world sees wildlife and the importance of animal welfare. By taking on seven kind acts for animals as part of our summer of kindness, people can give David the best birthday present by helping animals

of every kind, and helping us build a better world for every animal."

The seven acts of kindness are:

1. Plant for pollinators

Help bees, butterflies and other pollinating insects by creating a space full of nectar-rich flowers for them to feast on.

Choose a variety of flowers that bloom in different seasons, such as lavender, sunflowers and wildflowers. Plant in garden beds in a sunny area or, if you don't have any outdoor space, try pots or window boxes. Avoid using pesticides, as these can harm insects.

2. Make your own pet treats

Homemade pet treats are a fun and healthy way to reward your pet while knowing exactly what ingredients are included.

For dogs, you could mix mashed banana, oats and peanut butter (xylitol-free), roll into small balls or fun doggy-themed shapes and bake until firm. For cats, try small baked-tuna or salmon bites.

Store treats in an airtight container and give them in moderation as part of a balanced diet.

3. Feed the hedgehogs

Place shallow dishes of meaty cat or dog food, specialist hedgehog food or dry cat biscuits, along with fresh water, in a quiet, sheltered part of the garden, ideally near hedges or bushes. You can also make hedgehog-friendly gaps in your fencing for the critters to come into your garden.

Never give hedgehogs bread or



milk, as these can make them ill. Clean any bowls that you use regularly, to keep the feeding area hygienic.

4. Make a bee drinking station

Fill a shallow dish, tray or plant saucer with water and add stones, pebbles or marbles so the bees have somewhere safe to land. Place it near flowers in a sunny, sheltered spot.

Top it up regularly and clean it often, to keep the water fresh.

5. Support your pet in hot weather

Kind acts for your pets in the hot weather include walking dogs early in the morning or later in the evening when temperatures are lower.

Check pavements with your hand before walking, to make sure they are not too hot.

Always provide fresh drinking water and shaded areas, indoors or outdoors.

6. Organise a litter pick

Litter can be a real hazard for wildlife and a litter pick is a great way to improve your local area and protect wild animals from harmful waste.

7. Make a rescue box

Use a sturdy cardboard box with air holes and line it with a towel or blanket. Keep it in the back of your car or in the shed alongside a pair of gardening gloves for handling the animals and it's ready to go whenever you need it.

THE
JONES FAMILY
JEWELLERS

**IN-HOUSE
JEWELLERY
REPAIRS**

**FINE
JEWELLERY
EXPERTS**

**CASH FOR
GOLD & SILVER**

**WATCH
BATTERIES
& RESEALS**

**WATCH
STRAPS & PEARL
RESTRINGING**

SATCHWELL WALK,
LEAMINGTON SPA
01926 882552

TALISMAN SQUARE,
KENILWORTH
01926 954271

ROYAL PRIORS,
LEAMINGTON SPA
01926 893393

WWW.TJFJEWELLERS.CO.UK



FOR APPOINTMENTS EMAIL: ENQUIRIES@TJFJEWELLERS.CO.UK

PROFESSIONAL
JEWELLER
— Awards 2025 —
RETAIL TEAM
WINNERS 2025

Leamington Spa Half Marathon Returns for Its 9th Year on Sunday 7th June 2026 – Introducing New 15K Race

The eagerly anticipated Leamington Spa Half Marathon is back for its ninth year on Sunday 7th June 2026, promising another unforgettable day of running, community spirit, and family fun. .

Leamington Spa Half Marathon Returns for Its 9th Year on Sunday 7th June 2026 – Introducing New 15K Race

The eagerly anticipated Leamington Spa Half Marathon is back for its ninth year on Sunday 7th June 2026, promising another unforgettable day of running, community spirit, and family fun. Organised by Raceways Events CIC, a respected community interest company with a long-standing history of delivering high-quality events for both adults and children, this race has sold out for the past eight years, and 2026 is expected to be no different.

Starting and finishing at the iconic Pump Room Gardens, the event showcases the beauty and vibrancy of Leamington Spa, while providing a platform for both seasoned runners and first-timers to come together for a great cause.

New for 2026, the Leamington 15K joins the event lineup, offering a shorter but equally exciting challenge. Designed to be accessible for a wider range of runners, the 15K provides the perfect stepping stone for those building up to a half marathon or looking for a fast, enjoyable race day experience.

New headline sponsor Davisons Law

joins the event for 2026, demonstrating their commitment to supporting the local community and promoting active, healthy lifestyles.

David Poole, Event Manager at Raceways Events CIC, said: "We're incredibly excited to bring the Leamington Spa Half Marathon back for 2026. The support from the local community continues to grow year on year, and welcoming Davisons Law as our new headline sponsor is a fantastic step forward for the event. Introducing the new Leamington 15K allows even more people to take part, whether they're stepping up in distance or just getting started on their running journey. It's all about making the event as inclusive and accessible as possible while supporting an important local cause."

A spokesperson from Davisons Law added: "We're proud to be joining the Leamington Spa Half Marathon as headline sponsor for 2026. It's a brilliant community event that brings people together while raising vital funds for charity. We're looking forward to being part of such a positive and inspiring day."

This year, the race is raising funds for Safeline, a specialist Warwickshire charity dedicated to preventing sexual abuse and supporting those affected. Safeline offers a wide range of vital services, including free counselling, helplines, Independent Sexual Violence Advocates (ISVAs), and national support services such as the Male Survivor Helpline and Online Counselling for

survivors.

Participants can opt to enter the race for free by pledging to raise £100 for Safeline. Additionally, a portion of all race profits will be donated to the charity, helping to fund its ongoing work supporting individuals and families in need.

The event also includes a FREE Kids Mile Fun Run, starting and finishing beside the adult race line, allowing young runners to get involved in the excitement. All children will receive a free medal, making this a day the entire family can enjoy.

All adult finishers—across both the half marathon and 15K—will receive a medal, with optional t-shirts available to reduce waste and support Raceways Events CIC's ongoing commitment to sustainability. Runners will benefit from chip timing, post-race snacks, and the option to purchase race photography to capture their achievement.

Traffic management for the event will be professionally handled by Traffix, ensuring a safe and smooth experience for participants and minimal disruption to the local community. The #LeamHalf Event Village at the Pump Room Gardens will be buzzing with activities, family entertainment, food, and drink – all just steps away from the finish line and kids' zone. It's more than just a race – it's a celebration of community, fitness, and local pride.

This year's event is proudly supported by a range of local sponsors whose passion and

community spirit help make the race possible:

Davisons Law – Trusted legal experts supporting individuals and families across the region.

Coventry Runner – An independent specialist running shop providing expert advice, gait analysis, and the best kit for all runners.

Rockwealth – Financial planning specialists helping individuals and businesses build and protect their wealth.

Complete Estate Agents – Local property experts helping people buy, sell, and rent homes in and around Leamington Spa.

Sculpt Fitness – Local Pilates Studio offering cool down sessions for runners after the race

Graft Fitness – A local fitness community focused on strength, performance, and helping members achieve their goals.

Whether you're running for a personal best, taking on the new 15K, supporting a loved one, or cheering from the sidelines, make sure to mark Sunday 7th June 2026 in your diary for one of the most exciting events in the local calendar.

Entries are open now – don't miss your chance to be part of it!

For more information and to register, visit:

www.leamingtonspahalfmarathon.co.uk/

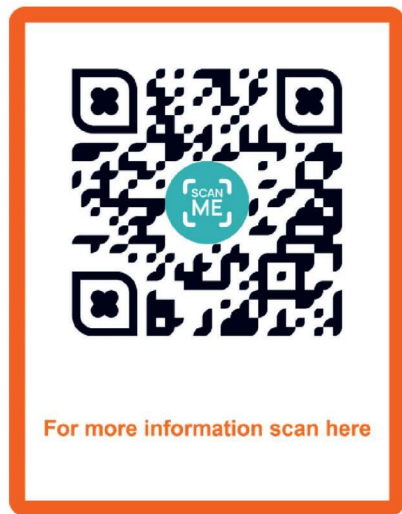
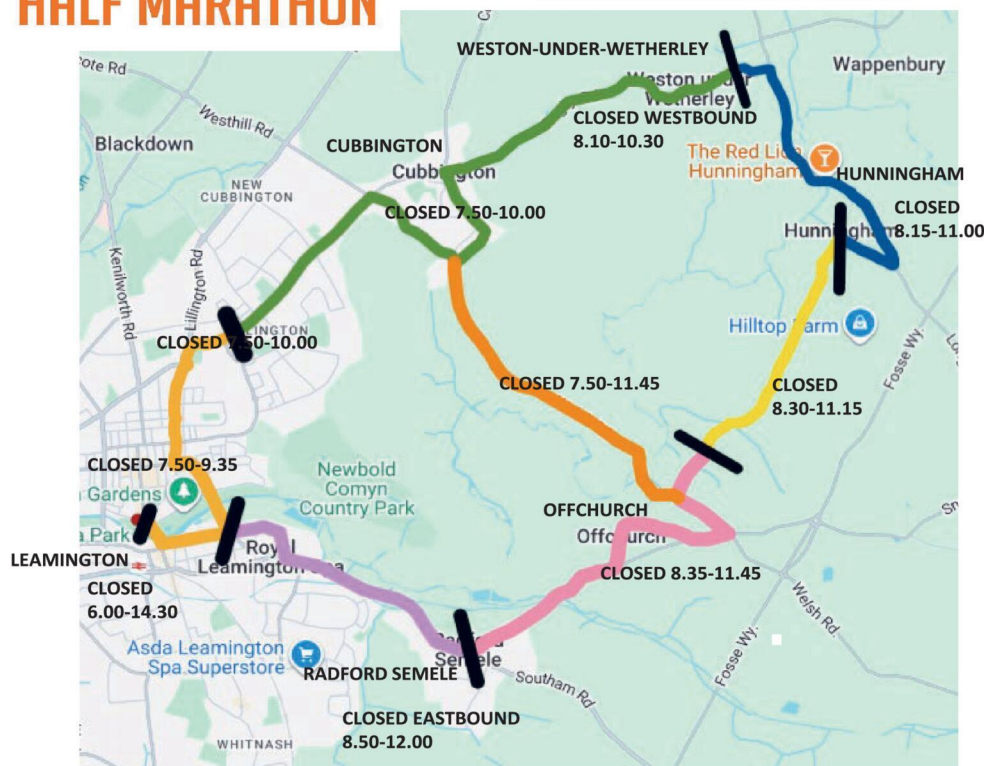
For enquiries, please contact:

David on 07895 321020

or email David@raceways.org.uk

LEAMINGTON SPA HALF MARATHON

Advance Notice of Road Closures Sunday 7th June 2026



For full road closure details in your area, please visit www.leamingtonspahalfmarathon.co.uk. If you have any questions, please email Dan on Dan@raceways.org.uk

SUDOKU

Complete the grid so that every row, every column and every 3 x 3 box contains every digit from 1 to 9.

EASY

| | | | | | | | | |
|---|---|---|---|---|---|---|---|---|
| | 5 | | | 6 | | | | 4 |
| 4 | 6 | | | 5 | 7 | | | 2 |
| | | 7 | | | 1 | | | 3 |
| | 9 | | 4 | | 2 | | | 7 |
| 5 | | | | 1 | | 2 | 3 | |
| 3 | 7 | | 5 | 9 | 8 | | | 6 |
| 6 | | | 9 | | | 8 | | 2 |
| | 3 | | 1 | | 5 | | | 9 |
| 7 | | | | 2 | | 3 | | |

HARD

| | | | | | | | | |
|---|---|---|---|---|---|---|---|---|
| | 8 | | 4 | | 1 | 9 | 3 | |
| | | | | | | | | 8 |
| | 2 | | | 6 | 9 | | | |
| | | | | | 5 | 1 | | |
| 3 | 5 | | | | | | 6 | 7 |
| | | 7 | 1 | | | | | |
| | | | 3 | 4 | | | 7 | |
| 2 | | | | | | | | |
| | 3 | 4 | 9 | | 8 | | 1 | |

PATHFINDER

Beginning with the top highlighted letter, follow a continuous path of words associated with the given subject. The trail goes through each letter once, twisting up, down and sideways, but never diagonally.

Nicole Kidman films

| | | | | | | | | | | | | | | |
|---|---|---|---|---|---|---|---|---|---|---|---|---|---|---|
| A | A | L | T | H | E | I | A | C | O | Y | S | O | E | Y |
| U | R | I | A | A | E | N | N | O | D | A | T | F | S | E |
| S | T | M | L | D | D | T | E | M | F | U | H | U | R | S |
| L | O | C | A | C | E | P | R | E | O | N | D | O | I | W |
| D | U | N | T | U | G | R | E | C | A | R | E | H | D | E |
| M | O | I | A | O | I | L | T | E | R | G | R | E | H | S |
| A | R | N | F | R | N | U | N | O | A | V | T | H | U | T |
| B | Y | R | A | I | L | O | M | I | S | N | I | E | H | B |
| B | A | A | N | V | L | E | E | G | S | T | E | R | T | A |
| I | W | A | D | G | O | T | H | O | S | O | K | A | M | T |
| T | H | I | T | C | D | C | I | L | S | A | P | N | R | E |
| L | O | W | E | H | D | I | G | D | E | O | M | F | O | V |
| E | B | E | D | T | O | E | A | M | N | C | H | T | O | E |
| O | B | P | A | H | T | F | A | L | C | A | E | R | E | R |
| Y | R | E | P | E | R | O | C | I | T | R | P | S | H | T |

Solutions opposite

CROSSWORD

| | | | | | | | | | | | | |
|----|--|---|--|---|---|--|---|--|---|--|---|--|
| 1 | | 2 | | 3 | 4 | | 5 | | 6 | | 7 | |
| 8 | | | | | | | | | | | | |
| 10 | | | | | | | | | | | | |
| 14 | | | | | | | | | | | | |
| 18 | | | | | | | | | | | | |
| 23 | | | | | | | | | | | | |
| 25 | | | | | | | | | | | | |
| 27 | | | | | | | | | | | | |

ACROSS

- Chief (9)
- Comply with (4)
- Pleasant (9)
- Russian plain (6)
- Savoury jelly (5)
- Wanderer (5)
- Coconut fibre (4)
- Rips (5)
- Hypocrisy (4)
- Short coat (5)
- Flagrant (5)
- Writing instrument (6)
- Differed (9)
- Intend (4)
- In want (9)

DOWN

- Build (9)
- Worthy (9)
- Anger (4)
- Requirements (5)
- Sloping type (6)
- Competent (4)
- Separate (5)
- Accumulate (5)
- Joined (9)
- Fierce (9)
- War horse (5)
- Intentional absentee (6)
- Support (5)
- Grow weary (4)
- Held (4)

Scribble pad

LADDER

Using the clues provided, fill in each step of the ladder with a new word, changing one letter at a time.

- Grip
- Brave
- Run away
- Accessory
- Soft material



NINER

Each number from 1 to 9 represents a different letter. Solve the clues and insert the letters in the appropriate squares to discover a word which uses all nine letters.

- 8289 gives a flower;
- 75265 gives a plant;
- 4813 gives trees.

| | | | | | | | | |
|---|---|---|---|---|---|---|---|---|
| 1 | 2 | 3 | 4 | 5 | 6 | 7 | 8 | 9 |
|---|---|---|---|---|---|---|---|---|

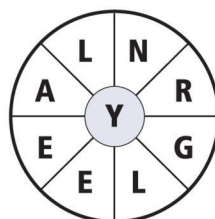
CODEWORD

This puzzle has no clues. Instead, every number printed in the grid represents a letter, with the same number always representing the same letter. For example, if 8 turns out to be a V, you can write in V wherever a square contains 8. Using your knowledge of words, complete the puzzle.

| | | | | | | | | | | | | | | |
|---|----|----|----|----|----|----|----|----|----|----|----|----|----|----|
| A | 16 | 15 | 17 | 6 | | 11 | | | 7 | 20 | 26 | 23 | | |
| B | | 24 | | | 16 | 15 | 21 | 18 | 18 | | 17 | | 13 | |
| C | | | | | | | | | | | | | | |
| D | 17 | 15 | 19 | 19 | 13 | | 13 | | 5 | 18 | 1 | 20 | 7 | |
| E | | | | | | | | | | | | | | |
| F | | 7 | | | 5 | | 6 | | 15 | | 12 | | 9 | |
| G | | | | | | | | | | | | | | |
| H | | 21 | 18 | 7 | 5 | 13 | 20 | 15 | 10 | | 12 | 10 | 1 | |
| I | | | | | | | | | | | | | | |
| J | 7 | | | | | 26 | | 4 | | | 10 | | 18 | |
| K | | | | | | | | | | | | | | |
| L | 5 | 1 | 23 | 23 | 26 | 10 | | 17 | 26 | 14 | 26 | 11 | 20 | |
| M | | | | | | | | | | | | | | |
| N | 10 | | 26 | | | | | 7 | | 8 | | | 26 | |
| O | | | | | | | | | | | | | | |
| P | 13 | 10 | 10 | L | 6 | 26 | 13 | 22 | 21 | 13 | 6 | 22 | | |
| Q | | | | | | | | | | | | | | |
| R | 6 | | 18 | O | 1 | | 10 | | 1 | | | 10 | | |
| S | | | | | | | | | | | | | | |
| T | 20 | 13 | 25 | 15 | 10 | | 3 | | | 23 | 18 | 20 | 13 | 12 |
| U | 26 | | 13 | | 10 | 13 | 26 | 22 | 26 | | | 20 | | |
| V | 17 | 18 | 11 | 2 | | | 17 | | | 18 | 18 | 4 | 26 | |
| W | | | | | | | | | | | | | | |
| X | | | | | | | | | | | | | | |
| Y | | | | | | | | | | | | | | |
| Z | | | | | | | | | | | | | | |

WORDWHEEL

You have 10 mins to find as many words as possible using the letters in the wheel. Each must use the hub letter and at least 3 others. Letters may be used only once. You cannot use plurals, foreign words or proper nouns. There is at least one 9-letter word to be found.



How you rate
 15 words: average 25 words: very good
 20 words: good 30 or more: excellent.



GODIVA
CARPETS

Apple ♥

BOUNCING THROUGH
LIFE ON...

♥

**BEAUTIFUL FLOORS.
PERFECT HOMES.**

Quality carpets & flooring
to suit every style & space.

ALL BRANDS
SUPPLIED AT
COMPETITIVE
PRICES



**OVER 80 ROLLS
IN STOCK**
Ready to go!



**FAST LOCAL
DELIVERY**
When you need it

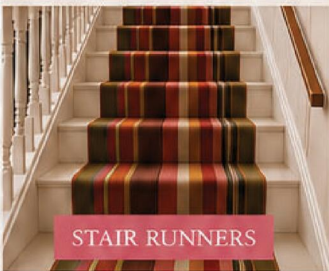
WE SUPPLY ALL LEADING BRANDS



LUXURY CARPETS



LVT & VINYL



STAIR RUNNERS



BEDROOMS



**FREE MEASURE
& QUOTE**



**EXPERT ADVICE
& PERSONAL SERVICE**



**PROFESSIONAL FITTING
BY OUR OWN TEAM**



**FAMILY RUN
BUSINESS**

024 7655 1200

Visit our showroom today!



ARGYLE HOUSE, COLLINGWOOD ROAD
COVENTRY, CV5 6HW

OPEN
BANK HOLIDAY
MONDAY
10 a.m. - 4 p.m.
Normal Opening hours
Monday - Saturday
9 am - 5.30 pm
Closed on Sundays

LOCAL • TRUSTED • FAMILY RUN
Serving Coventry homes with
quality carpets & flooring for years.

- Independent family business
- Over 80 rolls in stock ready to go
- Based in Coventry, CV5
- Free measure & quote
- Expert fitting team
- Supplying leading brands at competitive prices



GODIVACARPETS.CO.UK



GODIVA CARPETS



GODIVA_CARPETS

Motoring

www.carfinder247.co.uk

TELEPHONE 01926 451900 FACSIMILE 01527 584371



New track Caterham launched

CATERHAM has launched its latest limited-edition model, the Seven Nürburgring Edition, to celebrate 100 years of the most legendary and demanding circuit in the world.

Only 100 examples of the Nürburgring Edition will be made available to customers globally, based on either a Seven 420R or a Seven 340R, market dependent, with prices starting in the UK from \$48,995.

The bespoke race suspension has been developed exclusively for this model by Bilstein, using its advanced vertical dynamics test rig at the Bilstein Test Facility.

Engineered specifically around the demands of the Nürburgring, the suspension setup was refined

to deliver exceptional capability on both road and track. The result is a suspension package tailored specifically for this unique limited edition.

Teamed with a naturally aspirated 2.0 litre Ford Duratec Engine, it delivers 210bhp at 7,600rpm for a power-to-weight ratio of 375bhp/tonne. Paired with a five-speed gearbox, the Nürburgring Edition accelerates from 0-60mph in 3.8 seconds and tops out at a top speed of 136mph.

Alongside the custom-developed Bilstein damping and performance, there are several visual additions inside and out to match. As a fully licensed Nürburgring product, the edition features the distinctive branding and logo from the circuit, as well as the iconic red and grey colours available as paint finishes.

These include a choice of three Nürburgring paint colours - Verkehrsrot (Traffic Red), Achatgrau (Agate Grey) and Basaltgrau (Basalt Grey), whilst custom paint colours are also available.

Other exterior upgrades include a Nürburgring "red" track day roll bar, a Nürburgring mesh grill with Seven logo in dual colour and a 620-style nosecone with carbon aero whiskers.

The chassis colour is a distinctive Gunmetal Grey and the car features carbon front wings, Black Pack (black windscreen, headlamp bowls and exhaust heat shield), composite aero screen and LED rear lights clusters.

On the interior, the leather seats are complete with Nürburgring embroidery and red stitching, which is also found on the trans-

mission tunnel. This is alongside carbon interior panels, a four-point road harnesses and sequential shift lights.

As the final touch, each car has an individually numbered plaque for each of the 100 units produced.

For a century, the fondly named 'Green Hell's' 12.9-mile track in the Eifel Mountains in west Germany has been the ultimate proving ground for both car and driver.

Along with its changing elevation and camber across its 73 corners, the Nürburgring is a site where Caterham's road and race cars have flourished for decades.

Most notably, an 11th place finish at the Nürburgring 24 Hours in 2002, which saw an outstanding drive by Chris Cooper, Chris Harris, Clive Richards and Peter Haynes.

Trevor Steel, Senior Vice

President of Operations, Caterham Cars, said: "For a century, this track has championed values that are at the heart of what the Seven is all about - balance, precision and an unmatched driving experience."

"We set out to capture the spirit of the 'Ring, with every element of the car being honed to reflect the track's unique demands and character. Designed both for use on the track and the road, the Seven Nürburgring Edition is a vehicle that pays tribute to this circuit."

The Caterham Seven Nürburgring Edition will be unveiled at the upcoming 2026 ADAC 24 hours of Nürburgring.

Motorsport fans attending the event can see the model at the Caterham Nürburgring dealership and on the Bilstein stand in the paddock across the weekend.

Classified

TELEPHONE 01527 588688 FACSIMILE 01527 584371

PUBLIC NOTICES

PUBLIC NOTICES

Warwickshire County Council

ROAD TRAFFIC REGULATION ACT 1984
Warwickshire County Council has made the following Temporary Traffic Orders:

FISHER AVENUE, RUGBY
Order Effect: Road closed to vehicular traffic.
Reason for Order: To enable wastewater pipe repair works.
Order Commences: 25 May 2026 for up to 18 months.
Anticipated Completion: 29 May 2026.
Access & Diversion: Ashlawn Road, Vernon Avenue, St Johns Avenue and vice versa.
Contractor: STW Sewerage, Tel: 0345 602 7723.

COAL PIT LANE, MONKS KIRBY & WILLEY
Order Effect: Road closed to vehicular traffic from Monks Kirby Lane to Spring Farm.
Reason for Order: To enable water mains renewal works.
Order Commences: 25 May 2026 for up to 18 months.
Anticipated Completion: 22 June 2026.
Access & Diversion: Penn Lane, Coal Pit Lane, Mere Lane, Fosse Way, A5, Watling Street, Coventry Road and vice versa.
Contractor: Severn Trent Water, Tel: 0800 783 4444.

SAWBIDGE ROAD, GRANDBOROUGH
Order Effect: Road closed to vehicular traffic from Hatgrave Close to Main Street.
Reason for Order: Water connection installation works.
Order Commences: 26 May 2026 for up to 18 months.
Anticipated Completion: 28 May 2026.
Access & Diversion: Main Street, Grandborough Road, Woolscot Road, Daventry Road, London Road, Moor Lane, Sawbridge Road and vice versa.
Contractor: Network Plus, Tel: 01332 820920.

SCHOOL STREET, LONG LAWFORD
Order Effect: Road closed to vehicular traffic.
Reason for Order: To enable boundary box renewal and meter installation.
Order Commences: 28 May 2026 for up to 18 months.
Anticipated Completion: 29 May 2026.
Access & Diversion: Townsend Lane, Lawford Road, Rugby Road and vice versa.
Contractor: Chevron TM Ltd, Tel: 0330 008 0820.

ASHLAWN ROAD & ONLEY LANE, RUGBY
Order Effect: A temporary 30mph speed restriction will be imposed on Ashlawn Road, Rugby from Ashlawn Road/Barby Road/Onley Lane junction for a distance of 200 metres east and west side. A temporary 30mph speed restriction will be imposed on Onley Lane, Rugby from Ashlawn Road/Barby Road/Onley Lane junction for a distance of 330 metres.
Reason for Order: For the safety of all road users and of contractors working on or near to the carriageway.
Order Commences: 26 May 2026 for up to 18 months.
Anticipated Completion: 19 February 2027.
Contractor: M J Church (Plant) Ltd, Tel: 01225 891591.

BARBY ROAD, CALDECOTT, RUGBY
Order Effect: Road closed to vehicular traffic.
Reason for Order: To enable signalled crossing alterations and toucan crossing works.
Order Commences: 26 May 2026 for up to 18 months.
Anticipated Completion: 17 July 2026.
Access & Diversion: Ashlawn Road, Hillmorton Road, Barby Road and vice versa.
 Access to the hospital will be maintained at all times
 Access for cyclists and horses will be maintained.
Contractor: M J Church, Tel: 01225 891591.

ABBEY STREET, RUGBY
Order Effect: Road closed to vehicular traffic outside 171.
Reason for Order: Works to repair breaking out and fretting defects.
Order Commences: 25 May 2026 for up to 18 months.
Anticipated Completion: 25 May 2026.
Access & Diversion: Abbey Street, Murray Road, Whitehall Road, Clifton Road, South Street and vice versa.
Contractor: Network Plus, Tel: 03339 969800.

Warwickshire County Council proposes to make the following Temporary Traffic Orders:

PUBLIC FOOTPATH HAWLANDS ROAD, RUGBY
Order Effect: Footpath closed to all traffic opposite to property number 52 to a point opposite to property number 110.
Reason for Order: Water mains renewal works.
Order Commences: 10 June 2026 for up to 6 months.
Anticipated Completion: 24 July 2026.
Access & Diversion: Hawlands, Lloyd Road, Rydal Close, and vice versa.
Contractor: Severn Trent Water, Tel: 0800 783 4444.

CRITCHLEY DRIVE, DUNCHURCH
Order Effect: Road closed to vehicular traffic.
Reason for Order: To enable duct laying & associated works.
Order Commences: 8 June 2026 for up to 18 months.
Anticipated Completion: 10 June 2026.
Access & Diversion: No diversion available.
Contractor: Quantum TM, Tel: 01724 786286.

OVAL ROAD, RUGBY
Order Effect: Road closed to vehicular traffic.
Reason for Order: Boundary box renewal and meter installation.
Order Commences: 10 June 2026 for up to 18 months.
Anticipated Completion: 11 June 2026.
Access & Diversion: Percival Road, Sidney Road, Oval Road and vice versa.
Contractor: Chevron Traffic Management Ltd, Tel: 0330 008 0820

For all of the above temporary orders, pedestrian access to and egress from properties and land situated adjacent to the length of road to be closed will be maintained at all times. Vehicular access will be maintained where possible. Where a temporary access will be maintained where possible. Where a temporary access will be maintained where possible.

To report any problems with these works or for further details of our current & planned roadworks visit our website warwickshire.gov.uk/roadworksmap or call us 01926 412515.

WARWICKSHIRE COUNTY COUNCIL
ROAD TRAFFIC REGULATION ACT 1984
THE WARWICKSHIRE COUNTY COUNCIL
(BOROUGH OF RUGBY) (CIVIL ENFORCEMENT AREA)
(WAITING RESTRICTIONS, ON-STREET
PARKING PLACES AND RESIDENTS' PARKING)
(CONSOLIDATION) (VARIATION NO. 15)
ORDER 2026

Warwickshire County Council proposes to make the above-named Order, pursuant to the Road Traffic Regulation Act 1984, the effect of which will be to vary the existing Warwickshire County Council (Borough Of Rugby) (Civil Enforcement Area) (Waiting Restrictions, On-Street Parking Places And Residents' Parking) (Consolidation) Order 2017 (as varied), the effect of which will be to amend the pay and display on street parking places to free limited waiting, as described (by approximate measurements) in Schedule 1 below.

A copy of the proposed Order, together with a copy of the Order to be varied, plans showing the lengths of road affected and a statement of the Council's reasons for proposing to make the Order are available to view at Shire Hall, Market Place, Warwick, and online on the Council's website at <https://www.warwickshire.gov.uk/news/20208/rugby-borough>

Any enquiries relating to the proposals may be made to Phil Milton, Communities Directorate, Warwickshire County Council (tel. no. 01926 412142).

Any objections or representations to the proposals, which must be in writing and specify the grounds on which they are made, should be addressed to Phil Milton, County Highways, Minor Works Team, Shire Hall Post Room, Rear of Shire Hall, Northgate Street, Warwick, CV34 4RL, or sent by email to p.milton@warwickshire.gov.uk with "Rugby CPE V15 - William SV/Charlotte S/Arnold SV/Spring ST" as the subject header (Objections, representations, and the name of the objector or person making a representation, will normally be treated as public information and may be published. For further information on how Warwickshire County Council processes personal data please refer to the Customer Privacy Notice which is available at <https://www.warwickshire.gov.uk/privacy>).

Objections and representations must be sent so as to be received by 15 June 2026.

SCHEDULE 1
Proposed Limited Waiting, Monday - Saturday, 8am - 8pm, 1 Hour No Return in 2 Hours, Except Permit Holders R2

William Street, Rugby
 North side, from a point 3 metres east of its junction with Railway Terrace, eastwards for 129 metres

Charlotte Street, Rugby
 North side, from a point 11 metres east of its junction with Railway Terrace, eastwards for 128 metres

Arnold Street, Rugby
 (i) North side, from a point 3 metres east of its junction with Railway Terrace, eastwards for 88 metres
 (ii) North side, from a point 97 metres east of its junction with Railway Terrace, eastwards for 31 metres

Spring Street, Rugby
 North side, from a point 12 metres east of its junction with Railway Terrace, eastwards for 110 metres

S Duxbury, Director of Strategy, Planning & Governance, Shire Hall, Warwick CV34 4RL. Date 21 May 2026

PUBLIC NOTICES

Rugby Borough Council
Town and Country Planning Act 1990
(as amended)

Application Number R26/0165
1, HOME FARM BARN, THURNMILL ROAD, LONG LAWFORD, RUGBY, CV23 9BX
 Change of use from horse paddock to secure dog walking field.
This development may affect a Public Right of Way

Application Number R26/0361
BROWNSOVER HALL HOTEL, BROWNSOVER LANE, RUGBY, CV21 1HU
 Erection of an Orangery to be used as function space with associated works within the existing walled garden area. Provision of new landscaped garden in place of existing marquee and the erection of 2 no. storage sheds
This development may affect a Listed Building. This development may affect a Conservation Area. This is a major development

R26/0367
Phases R5, R6 and R7 Rugby Gateway, Leicester Road, Rugby
 Section 73 to vary condition 1 of R23/0453 Parcel R5 only. (Erection of 550 dwellings for Phases R5, R6 and R7 with associated play area, and sports pitches. (Approval of Reserved Matters: Access, Appearance, Landscaping, Layout and Scale in relation to outline planning permission R10/1272). Amendments to the substitution of house types to plots 4 and 5 (further to NMA R25/0323), substitution of the McArthur for the McQueen (30 plots) and to amend the landscaping including the reinstatement of a hedgerow section.
This development may affect a Public Right of Way. This is a major development

Application Number R26/0387
FILED FARM, PLOTT LANE, STRETTON-ON-DUNSMORE, RUGBY, CV23 9HL
 Retrospective application for the change of use of agricultural land to a HGV haulage yard.
This development may affect a Public Right of Way

Application Number R26/0393
THE MEWS, LITTLE CHURCH STREET, RUGBY, CV21 3AN
 Proposed Change of Use to convert existing ground floor garages to office space (Class E). Conversion of existing first floor office to residential accommodation.
This development may affect a Conservation Area

Application Number R26/0401
LAND WEST OF CHURCH, MILLERS LANE, MONKS KIRBY
 Erection of a new dwelling with associated parking.
This development may affect a Conservation Area

Application Number R26/0405
DUNCHURCH PARK HOTEL AND CONFERENCE CENTRE, RUGBY ROAD, DUNCHURCH, RUGBY, CV22 6QW
 Variation of condition 1 of R23/1273 (retention of children's playground, gatehouse and security barrier) for a further temporary period of 18 months.
This development may affect a Listed Building. This development may affect a Conservation Area

Application Number R26/0411
8, SOMERS ROAD, RUGBY
 Demolition of all existing buildings and the redevelopment of the site for the erection of commercial/industrial uses within Use Classes E(g)(ii) (Research and development of products or processes), E(g)(iii) (Industrial Processes), B2 (General Industrial) and B8 (Storage and Distribution) and ancillary offices, together with means of access, servicing, car parking, landscaping and associated works
This development may affect a Public Right of Way. This is a major development

Application Number R26/0436
DOLLMAN ROAD PLAYGROUND, HOULTON (RUGBY RADIO STATION), KEY PHASE 1, DOLLMAN ROAD, RUGBY, CV23 1AD
 Erection of Neighbourhood Equipped Area of Play (NEAP) formal open space and associated works within Key Phase 1 (application for approval of reserved matters relating to appearance, landscaping, layout and scale pursuant to outline planning permission R17/0022)
This is a major development

Application Number R26/0439
VILLAGE HALL, CHURCH LANE, THURLASTON, RUGBY, CV23 9YJ
 Part retrospective for erection of rear pergola and side extension to village hall for additional storage
This development may affect a Conservation Area

Members of the public may inspect copies of the application, the plans and documents submitted with it online at: www.planningportal.rugby.gov.uk or in an electronic form at: Town Hall, Evreux Way, Rugby CV21 2RR between the hours of 9.00 am and 5.00 pm Monday to Friday until 13 June 2026. Please note a planning officer would not be present. If you wish to make an appointment to discuss the application, please contact the case officer.

Any person who wishes to make representation to the above mentioned Council about the applications should make them online - www.planningportal.rugby.gov.uk (search for application number and select comment) - or in writing by that date to Chief Planning Officer, Town Hall, Rugby, CV21 2RR.

If an application is determined by the Planning Committee, members of the public may have the opportunity to speak at the meeting. More details about public speaking are available from the Council or on-line at: www.rugby.gov.uk/speakingatplanning

For householder or minor commercial applications, in the event of an appeal against a refusal of planning permission, dealt with on the basis of representations in writing, any representations made will be sent to the Secretary of State, and there will be no further opportunity to comment at the appeal stage.

Nicola Smith - Strategic Director for Place

PUBLIC NOTICES

Warwickshire County Council

ROAD TRAFFIC REGULATION ACT 1984
Warwickshire County Council has made the following Temporary Traffic Orders:

BRINKLOW ROAD & COVENTRY ROAD, COOMBE FIELDS
Order Effect: A 30mph speed restriction will be imposed between West Lodge Retreat on Brinklow Road, Coombe Fields and Woodhill Farm, Coventry Road to Coombe Fields.
Reason for Order: The restrictions are required for the safety of all road users and of the participants in the Café Mambo - Coombe Abbey 2026.
Order Commences: 29 May 2026 for 2 days.
Event Contact: Event Support Team Tel: 02476 997605.

Warwickshire County Council proposes to make the following Temporary Traffic Orders:

MERIDEN ROAD, FILLONGLEY
Order Effect: Road closed to vehicular traffic.
Reason for Order: To enable telegraph pole replacement.
Order Commences: 8 June 2026 for up to 18 months.
Anticipated Completion: 8 June 2026.
Access & Diversion: Meriden Road, Ousterne Lane, Coventry Road, Tamworth Road, Rock Lane, Tamworth Road Service Road, Hollyfast Lane, Long Lane, Counton Wedge Drive, Hollyhead Road, Pickford Way, Dunchurch Highway, Birmingham Road, Henry Bostock Road, Coventry Road, Maxstoke Lane, Fillongley Road and vice versa.
Contractor: Quantum TM, Tel: 01724 786286.

For all of the above temporary orders, pedestrian access to and egress from properties and land situated adjacent to the length of road to be closed will be maintained at all times. Vehicular access will be maintained where possible.

To report any problems with these works or for further details of our current & planned roadworks visit our website warwickshire.gov.uk/roadworksmap or call us 01926 412515.

S Duxbury, Director of Strategy, Planning & Governance, Shire Hall, Warwick CV34 4RL. Date 21 May 2026

GOODS VEHICLE OPERATOR'S LICENCE
 Prembest LTD trading as **PREMBEST LOGISTICS LTD of 16 BRONZE ROAD, CV22 7XN, RUGBY, WARWICKSHIRE** is applying for a licence to use **Onley Grounds Farm, Willoughby, Rugby, CV23 8AJ** as an operating centre for 6 goods vehicles and 6 trailers

Owners or occupiers of land (including buildings) near the operating centres who believe that their use or enjoyment of that land would be affected, should make written representations to the Traffic Commissioner at Quarry House, Quarry Hill, Leeds, LS2 7UE stating their reasons, within 21 days of this notice. Representatives must at the same time send a copy of their representations to the applicant at the address given at the top of this notice. A Guide to Making Representations is available at: www.gov.uk/government/publications/a-guide-to-making-representations-objections-and-complaints-goods-vehicle-operator-licensing

Goods Vehicle Operator's Licence
 Shire Scaffolding (Midlands) Limited of **Fortress House, Dongan Road, Warwick, CV34 4JW** is applying to add an operating centre to keep 2 goods vehicles and 0 trailers at **Fortress House, Dongan Road, Warwick, CV34 4JW**

Owners or occupiers of land (including buildings) near the operating centre(s) who believe that their use or enjoyment of that land would be affected, should make written representations to the Traffic Commissioner at Quarry House, Quarry Hill, Leeds, LS2 7UE, stating their reasons, within 21 days of this notice. Representatives must at the same time send a copy of their representations to the applicant at the address given at the top of this notice. A Guide to Making Representations is available from the Traffic Commissioner's office.

PUBLIC NOTICES

BERNARD STUART SMITH
 (Deceased)

Pursuant to the Trustee Act 1925 any persons having a claim against or an interest in the Estate of the above named, late of Norwood Farm Coal Pit Lane Willey Rugby, CV23 0SL, who died on 23/07/2025, are required to send written particulars thereof to the undersigned on or before 23/07/2026, after which date the Estate will be distributed having regard only to the claims and interests of which they have had notice.

BROOMFIELDS SOLICITORS LLP
 Minerva House 7 St John's Business Park Rugby Road, Lutterworth Leicestershire, LE17 4HB

To advertise call 01527 588688

Public Notices

Classified

TELEPHONE 01527 588688 FACSIMILE 01527 584371

SALES & WANTS

MISCELLANEOUS

RECLINER CHAIR electric rise & recline £169 Manual recline chair £60 High seated chair £40 Can deliver 07703 925662

BEDS NEW Doubles £95 Singles £59 King size £159. Second hand doubles £49 Singles £29 Fridges £49 Freezers £59 Can deliver 07703 925662

WASTEHOG 45ltr £10 vgc Zen Chi machine 10 min timer £10 07970158370

1965 Ford Anglia Roof Rack In good condition £45 07743 929558

COFFEE Machine Nescafe Dolce Gusto £20 07743 929558

SKETCHERS size 5 ballet type shoe beige brand new in box £15 07989153851

EPSON wifi printer scanner fully working £20 0770580748

TWO fridge freezers 3 draw white £50 2 draw white £30 07355688601

THREE TVs CD, Freeview built in £30 each 07355688601

OFFICE black swivel desk chair £30 07355688601

BBQ 01527 465036

MISCELLANEOUS

BLACK wrought iron slimline wall mirror. Frame made up of black decorative leaves. 39" Long x 12" wide approx: £4.00. Tel: 07934132759

LADIES m & s classic fully lined summer jacket with detachable hood. Light turquoise. Hardly worn. Size 12. £3.00. (1 Can forward photos if interested) tel: 07934132759

DEBENHAMS king size duvet cover. Polyester / cotton. Pastel shades of blue & white pinstripe. Brand new, wrong size bought, so never used! £9.00. Tel: 07934132759

ROCKING horse (mamas & papas) with reins, saddle & stirrups. Height from floor to saddle 28". Very good clean condition. Collection only. £45.00. Tel: 07934132759

RUNNER BEAN Plants, £2. a tray of 12 plants 8 ft x 14 / 16mm canes 85p. 01905 778926

17 rung aluminium double ladders excellent condition £50 07864037112

FIND it Fix it type small wooden step ladder suit shelves DIY £10 07974822880

MISCELLANEOUS

FIND it Fix it type small wooden step ladder suit shelves DIY £10 07974822880

CORNER Unit in light wood 6' 3 open shelves + cupboard below possible local delivery £45 ono 07818420097

DENON-DRA-F107 DAB Stereo receiver, CD player, speakers & manual £100 07871159366

BBQ 01527 465036

MISCELLANEOUS

TWO corded hedge trimmers for sale one 51cm cutter one 46cm cutter, in fair condition. Both with extension leads £10 each. 07518902804 Kidderminster

WHEELCHAIR with hand breaks on push handles like new, had little use £60 Kidderminster 07518902804

SOOTY & Sweep cookie jar or biscuit barrel £25 07719695685

WANTED

RECORDS WANTED
Cash paid
Call Paul or text: 07765 142354 / 01527 893992
Or email: welston@live.com
Paul (Albatross & Doomed Records)

WANTED

WANTED
Motorcycles and Scooters
Any cc, condition or age, good prices paid
07944 781 933 | 01926 257 643

SERVICES

CONSERVATORIES & GLAZING

DOUBLE GLAZING REPAIRS
Locks, Hinges, Handles, Glass, Windows or Doors
New Doors/Windows Also Supplied/Fitted
07973 200 623

DRIVEWAYS

COVENTRY DRIVEWAYS
• Block paving • Slabs • Porcelain Tiles & Sandstone Kils
• Fencing • Gravel • Turf & Artificial Grass
• Decking, Steps and more
7 Years Warranty on all projects
Payment only after completion
02476 274439 07740 101227
www.spanglefish.com/coventrydriveways

HOME IMPROVEMENTS

HANDY MAN
If you're looking for a fast and reliable service
Then call Lenny
• Plastering • Plumbing • Fencing
• Gardening • Flooring • Kitchens
• Bathrooms • Carpentry • Flat pack furniture
• Tiling • Painting
02476 443 996
07794 784 266
NO VAT CHARGE

KITCHENS

S.W INSTALLATIONS
Kitchens & Bathrooms
FREE DESIGN & QUOTATION
QUALITY KITCHENS & BATHROOMS SUPPLIED & FITTED
PLUMBING, CARPENTRY, TILING, WORKTOP & DOOR REPLACEMENT
(Supply & fit, supply only or fit only)
LOCAL TRADESMAN 20YRS EXPERIENCE
NO JOB TOO SMALL
07971 684 353

Check out our E-Editions!

Coventry Observer .co.uk
Upgraded route set to improve



Windows Plus
Windows • Doors • Conservatories • Porches • Facias & Sillias
02476 200622
www.windowsplus.co.uk

Rugby & Lutterworth Observer
Izzy di her to

DRIVES
Are you looking to your driveway?
We can provide you with a free quote, including VAT.
01906 303399 | Mobile: 07773 911502 | www.drives.co.uk

Leamington Observer
Homes to re

www.coventryobserver.co.uk/editions
www.rugbyobserver.co.uk/editions
www.leamingtonobserver.co.uk/editions
The same paper you love on your mobile, tablet and computer

SOMETHING TO SELL?
Advertise them in **The Observer** or **The Standard**

Raise some extra cash and make someone else's day by selling your unwanted items
If your item is valued at £500 or less - its **FREE OF CHARGE** in lineage (max 15 words)
But if you want your advertisement to really stand out or if your item is valued at over £500, you can place details in a boxed advertisement for just **£5.75 (inc Vat)**
3 PIECE SUITE brown leather, perfect condition as new **£550** can deliver
Telephone 10234 567890
(£5.75 incVAT example boxed advertisement)

Simplify fill in the coupon below, tick the appropriate box, enclose your cheque or credit card details if required, and we'll do the rest - Or alternatively email your free ad to: freeads@bullivantmedia.com

Free Lineage (Items upto value £500) Paid for Boxed Ad (Items of any value)

Details of Item For Sale for Publication (No Pets or Livestock or Firearms please):
(MAX 15 WORDS)

Tel:

Details (Not for Publication):
Mr/Mrs/Ms Initials Surname
Address
..... Postcode
Tel: Mobile
Email:

I enclose cheque, payable to Bullivant Media Group Ltd, value £.....
or alternatively
Please debit my card for £..... Visa/Mastercard/Maestro/Delta
Credit Card Number
Exp: Start:

Sec No: (Last 3 digits) Issue No. (if applicable)

Send to Bullivant Media Group Ltd, Webb House, Church Green East, Redditch, Worcestershire, B98 8BP or email your advertisement to freeads@bullivantmedia.com

United and Sphinx in division swap after mixed campaigns

FOOTBALL: COVENTRY United have discovered which league they will play in next season after the FA released the National League System (NLS) club allocations for steps one to six.

United won promotion from the United Counties League Premier Division South last season after beating Atherstone Town in the play-off final.

Coventry will play in the Northern Premier League Midlands at Step Four for the first time in the club's history next season and can look forward to derby matches against the likes of Bedworth United, Nuneaton Town and Rugby Borough.

A total of four teams achieved promotion into the division - Coventry, Nuneaton, Boston Town and Grantham Town.

And two teams have dropped into the division from the step above - Barwell and St Ives Town.

And Bourne Town have received a reprieve from relegation to remain in the NPL Midlands.

The other teams Coventry will come up against next season are: AFC Rushden and Diamonds, Basford United, Belper Town, Boldmere St Michaels, Carlton Town, Colleshill Town, Corby Town, Long Eaton United, Loughborough Students, Mickleover, Shepshed Dynamo, Sutton Coldfield Town and Wellingborough Town.

The league comprises 22 teams.

Elsewhere, Coventry Sphinx will play in the United Counties League Premier Division South in 2026/27 after suffering relegation from the Northern Premier League Midlands last term.

Sphinx finished second bottom in the Northern Premier League Midlands last season, some nine points from safety.

Sphinx can look forward to derby matches against fellow relegated side Rugby Town.

Sphinx, Rugby and St Neots Town have dropped into the division after suffering relegation from Step Four.

Desborough Town, FC Stratford, FC Peterborough and Knowle all achieved promotion into the division from Step Six.

And Coton Green Saturday have moved into the division laterally while both Bugbrooke St Michael and Highgate United both received reprieves from relegation.

The other teams Sphinx will come up against next season are: Atherstone Town, Daventry Town, EynesburyRovers, Godmanchester Rovers, Histon, Lutterworth Town, Moulton, Newport Pagnell Town, Northampton ON Chenecks, Northampton Sileby Rangers and Yaxley.

The league comprises 20 teams.

All leagues are subject to FA Council ratification.

Blaze begin building roster

ICE HOCKEY: COVENTRY Blaze has confirmed the return of long-serving British defence-man David Clements for the 2026/27 season.

Clements will enter his 12th season with Blaze next term and sits in the top-five appearances makers in the club's history.

The 31-year-old has played 606 times for his hometown club, contributing 131 points (28 goals and 103 assists) from the blue line.

Clements became associate captain of Blaze ahead of the 2022/23 Elite League season.

And his loyalty was recognised with a testimonial season in 2024/25.

Blaze head coach, Kevin Moore said: "I couldn't be happier that David will be back for year 12 in Blaze blue."

"He is a consummate teammate who is the glue of our locker room."

"On the ice, he has been a steady presence for our group, and we look forward to him having another great season."

Clements added: "I want to win a trophy in Coventry. I'm excited for what's ahead and to see all you fans in September."

Blaze have also confirmed last season's top scorer Grant Mismash will remain with the club for the 2026/27 Elite League season.

The American forward led the Blaze charts for points (62) and assists (36) in Elite League competitions with a joint high of 26 goals.

The 27-year-old joined Blaze from Belfast Giants last season after he helped the latter side to an Elite League and Challenge Cup double in 2024/25.

Moore said: "We are extremely excited to have Grant back."

"This past season, he was one of the most dynamic play-makers in the league and will anchor our offense in 2026/27."

"His edgework, ability to make plays in tight spaces, and shooting ability fit exactly with how we want to play with the puck."

"Grant is a selfless and respected teammate and a big part of our locker room."

David Clements has extended his stay with Coventry Blaze into a 12th season. Picture by Scott Wiggins.



Godiva athletes in County medal glut on track and field

by Aaron Sutcliffe
aaron.sutcliffe@bullivantmedia.com

ATHLETICS: COVENTRY Godiva Harriers won a staggering 40 medals at the Warwickshire and Shropshire County Track and Field Championships.

The event took place at Pingles Stadium in Nuneaton as Godiva's athletes set a number of new personal best (PB) times.

In total, Coventry's athletes won 16 gold, 14 silver and 10 bronze medals.

And one athlete, Marly Johnson, won five individual medals made up of two gold, two silver and one bronze.

Johnson won 100m and 200m gold, long jump and javelin silver and high jump bronze in the under-14 girls' category.

Coventry's Iyinoluwa Lawal won 100m gold in the under-18 men's event while Shaiya Kenion took gold in the under-18 women's race.

And Samson Mee-Harris took bronze in the senior men's race while Efehi Omohun took bronze in the under-16 girls' event.

Lawal and Kenion also took gold in their respective 200m races while Jeevan Sandhu-Dubida won bronze in the under-18 men's race.

Coventry also won a medal in the 300m discipline as Niyah Bennett took silver in the under-16 girls' race.

The medals continued in the 400m as Ella Martin won gold in the under-18 women's race, Joel Burroughs took silver in the under-18 men's race and Rowena Ockenden claimed bronze in the senior women's race.

Harriers won a host of medals in the 800m discipline as Joe McLeod won gold in the senior men's race, Grace Davey took gold in the under-16 girls' race and Ava Bourton claimed gold in the under-18 women's race.

Coventry's athletes won medals galore. Picture courtesy of Coventry Godiva Harriers.



en's race.

And Clark Roberts took silver behind McLeod in the senior men's event while Alice Daglish won bronze in the senior women's race and Mohammad Mohammadiha took silver in the under-18 men's race.

McLeod also took silver in the 1,500m race while Daglish won gold over the same distance while Isabella Taplin took silver behind Daglish in the senior women's race.

Daglish won another gold medal in the 3,000m event while Ed Griffiths took bronze in the senior men's race.

Coventry struck gold again in the sprint hurdles event as Daniel Walber stepped onto the top of the podium over 110 metres in the under-20 men's race.

In the long jump event, Mee-Harris claimed a second bronze

medal while Imogen Lane took gold in the under-20 women's category while Cagan Kilic won silver in the under-18 event.

Coventry's only medal in the triple jump came via Jack King who took silver in the senior men's event.

Lane returned to win gold in the shot put while Chioma Anyasodo won silver in the under-16 girls' event.

In the hammer throw, Leona Delahaye won silver in the under-16 girls' event while Walber won silver to claim a second medal.

And over in Shropshire, Sophie Hurst won senior women's gold in the 800m event while Chris Hurst won gold over the same distance in the senior men's race.

Sophie won gold again in the 3,000m and Chris also won a second medal as he took silver over the same distance.

Cov extend season with play-off win as tough trip to Bedford awaits

RUGBY UNION: COVENTRY Rugby held off a late fightback from Hartpury to claim a thrilling 28-25 victory and reach the Champ Rugby play-off semi-finals.

Despite two tries from Morgan Strong in the first half, Coventry trailed by a single point at the interval at the Nick Newbold Stadium.

However, Josh Thomas kicked Alex Rae's side into a five-point lead before Murray Davidson's try with 11 minutes left to play all but ended the contest.

The visitors scored two late tries to close the gap between the teams to three points but Coventry held on to book their place in the play-off semi-finals.

Hartpury edged into an early three-point lead as Harry Bazalgette kicked a penalty between the posts from the halfway line with the game just six minutes old.

However, Coventry crossed for the game's first try on 10 minutes

when Strong powered over from close range and Tommy Mathews added the extras.

The visitors reduced the deficit as Bazalgette kicked a second penalty through the sticks just past the quarter-hour mark.

And Hartpury reclaimed the lead on 27 minutes when Ollie Allsopp crashed over from five-metres out following sustained pressure on the Coventry line and Bazalgette converted.

Coventry responded with a second try on the stroke of half time as Strong crossed again from a driving maul although Mathews could not add the extras to leave the home side one point behind at the break.

Rae's side reclaimed the lead on 54 minutes when replacement Thomas kicked a penalty moments after he replace Mathews.

And Thomas kicked a second penalty four minutes later via the

inside of the post while Hartpury lost Harry Taylor to the sin-bin for a high tackle.

Coventry pulled clear of Hartpury on 69 minutes when Davidson broke through and sprinted to the line as Thomas converted to put the home side into a commanding 12-point lead.

And a third penalty from Thomas three minutes from time all but sealed the home side's place in the semi-finals.

Hartpury scored a consolation try less than a minute later as Allsopp scored his second try of the game.

And Brad Denty crossed again for the visitors with the final play of the game as Bazalgette's conversion brought an end to the contest.

Coventry travel to league runners-up Bedford Blues in the play-off semi-finals on Friday, May 22 with kick-off at 7.45pm at Goldington Road.

CRS LTD
 Spring Lane South, Malvern WR14 1AT
 ATF's are the **ONLY** legal way to scrap your vehicles
BUYERS
 of all SCRAP Metals and SCRAP Vehicles
 The **ONLY** authorised treatment facility in Malvern!
 Best Prices Paid • Collection & Skip Drops Farm
 Equipment, Copper, Brass etc. • 50 Ton Weigh Bridge
ID REQUIRED - 01684 578081
 www.crs-malvern.co.uk

Observer SPORT



9 772040 128006
 Published by Bullivant Media Group Ltd, Webb House,
 Church Green East, Redditch, Worcestershire, B96 8BP
 Printed by Newsquest, Newspaper House, Osney
 Mead, Oxford, Oxfordshire, OX2 0EJ

VINYL RECORDS WANTED
 Buying since 1978
 Get your cash TODAY!
 I will come to you
 Phone PAUL
 01527 893992 | 07765 142354

www.rugbyobserver.co.uk

BRINGING YOU **ALL THE LATEST** SPORTS NEWS AND VIEWS FROM THE AREA

Knockout champions crowned

by **Aaron Sutcliffe**
 aaron.sutcliffe@bullivantmedia.com

FOOTBALL: THE Rugby and District Sunday League's five main knockout trophies reached their conclusion with two new winners crowned.

The finals of the league's two longstanding competitions - the Advertiser Cup and the Hospital Cup - took place at Rugby Town's Butlin Road ground.

And Caldecott Arms lifted the Advertiser Cup while Webb Ellis won the Hospital Cup as both teams scooped their first-ever pieces of knockout silverware.

Caldecott edged out Brinklow 1-0 in the final as Cameron Rumsey's 74th-minute goal settled the contest from Neal Whitford's unconventional assist.

The victors created the better chances throughout as Brinklow



Caldecott Arms lift the cup for the first time.

captain Rob Wallace somehow managed to clear Emilio Johnson's first-half effort off the line.

And Wren Wood twice went close for Caldecott either side of Rumsey's winning goal.

A penalty shootout decided the Hospital Cup after Webb Ellis and Gatehouse Town played out a thrilling 3-3 draw at the end of 90 minutes.

Webb took a commanding two-goal lead early in the second half as Danny Winterlich curled home a free-kick after Brodie Thomas opened the scoring shortly before the break.

However, Liam Kennedy halved the deficit for Gatehouse only for George Price to restore Webb's two-goal cushion.

A frantic end to the game ensued as Kennedy scored his second of the game with a strike from the edge of the penalty area.

And Gatehouse drew level at the death as Stephen Walsgrove headed in an equaliser to send the game to a shootout.

However, Luke Townsend scored the match-winning penalty as Webb triumphed 4-3 on spot kicks to lift the trophy.

Elsewhere, the competition's Veterans League Cup's also took place at the home of Daventry Town.

Gatehouse made amends for their Hospital Cup final defeat to



Webb Ellis lifted the Hospital Cup for the first time. Pictures by Gemma Sharpe and Harris Khawaja.

win the Division One Cup with a 2-1 victory against the Bell Hillmorton.

And Community Relations Veterans battled to a 3-2 win against Rugby Borough Souters to win their divisional cup.

Rugby Rovers also sealed a Division Two league and cup

double with a 2-1 win against Community Relations 1sts in the final.

The finals raised just over £1,000 for the OurJay Foundation to help support the charity's efforts in providing accessible defibrillators across Rugby and beyond.

CASHBROKERS

LEAMINGTON SPA

PAWNBROKING LOANS
 SCRAP GOLD & SILVER
 BUY BACK
 JEWELLERY & WATCHES
 COINS & BULLION

CASH PAID
**FOR GOLD, SILVER,
 COINS & BULLION**



01926 258252

144 Parade, Leamington Spa, CV32 4AG

www.cashbrokersleamingtonspa.co.uk



EXTERIOR



Country Shades

Tinting System

Opaque wood finish
in endless colours.

Osmo Country Shades offers over 2000 opaque colours with unsurpassed all-weather durability, exceptional coverage of up to 26m² per litre. Offering a UV-stable finish that will not crack, peel, flake or blister, while allowing easy maintenance with no sanding required before re-coating.

Country Shades can be mixed in RAL, NCS and British Standard Colours.

Ideal for:

- ✓ Fencing
- ✓ Cladding
- ✓ Garden buildings
- ✓ Doors and windows



FIND OUT MORE

Discover more on the Country Shades range and find your local stockist.



www.osmouk.com



NATURAL
Plant based oils
and waxes



SAFE
Safe to humans,
animals and plants



PROTECTION
Very high UV
protection



SUSTAINABLE
Built on
responsibility

OSMO PROMISE...

For over 60 years, Osmo has been at the forefront of natural wood protection. Our commitment to quality, innovation and sustainability ensures your wood surfaces remains beautiful - for generations.

...In form and colour.